

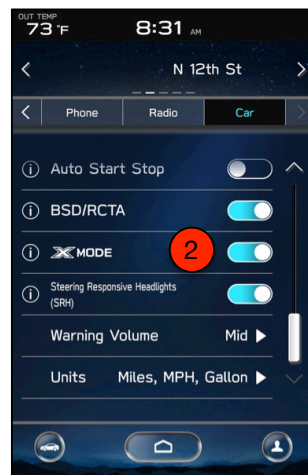
Get to Know Vehicle Control Settings

Note: Most of these vehicle control settings are not active on the demonstration head unit. Please team up with other participants and try these hands-on exercises in the two Outback vehicles parked here.

X-MODE®

There are 3 different ways you can engage X-MODE. Try each of them now:

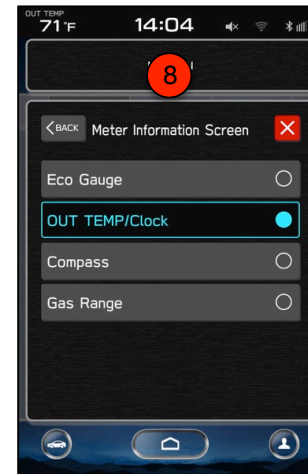
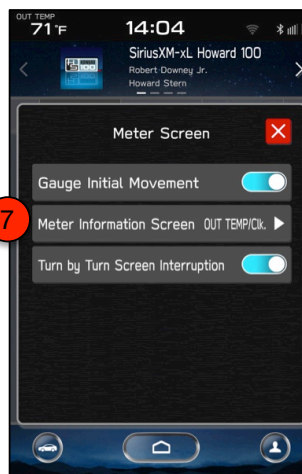
1. Touch the **Vehicle shortcut icon** on the lower left. Touch the **Vehicle Controls** tab, then touch **X-MODE On/Off**
2. Touch **Home** > **Settings** > the **Car** tab and then touch the **X-MODE slider**
3. Swipe through the **Information Bar** at the top of the screen until you get to the **fifth screen**. Turn X-MODE On/Off



CMD INFORMATION SCREENS

Settings for the Combination Meter Display are no longer provided by the "i" </> switches on the steering column. These settings are now available in the Center Information Display:

4. From **Home**, touch **Settings**
5. Touch **General**
6. Scroll to **Meter Screen** and select it. Your choices are:
 - A. **Gauge Initial Movement**
 - B. **Meter Information Screen** (and the selected preference)
 - C. **Turn by Turn Screen Interruption**
7. **Select Meter Information Screen.** This will determine what information is displayed at the top of the Combination Meter Display (between the tachometer and speedometer)
8. Select one of these choices:
 - D. **Eco Gauge**
 - E. **Outside Temperature/Clock**
 - F. **Compass**
 - G. **Gas Range**



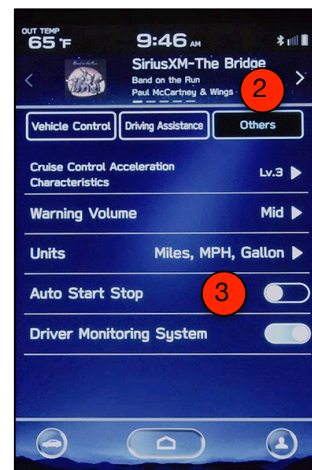
Get to Know Vehicle Control Settings, continued

AUTO START-STOP

Auto Start-Stop operates automatically to save gasoline and reduce emissions when the vehicle is stopped. To deactivate Auto Start-Stop:

1. Touch the **Vehicle Icon** on the Home screen
2. Touch the **Others tab** on top
3. Move the **Auto Start-Stop slider Off**

Note: Auto Start-Stop will default to ON when the ignition is cycled.



AUTO VEHICLE HOLD

To reduce driver fatigue in congested traffic or when waiting for a light, Auto Vehicle Hold (AVH) holds the vehicle in place when the brake pedal is initially depressed and the vehicle is stopped. An indicator in the Combination Meter Display illuminates when the system is operating. The quickest way to turn AVH On is via the Vehicle shortcut icon:

4. Touch the **Vehicle icon** on the Home screen
5. Touch the **Vehicle Control tab** on top
6. Move the **Auto Vehicle Hold slider On**

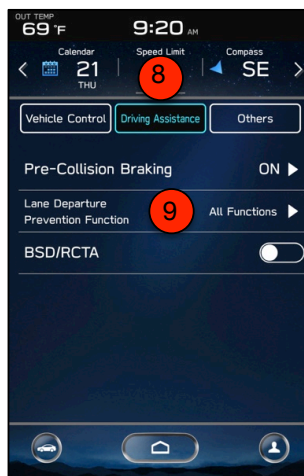
Note: Auto Vehicle Hold defaults to Off.



LANE DEPARTURE PREVENTION

Lane Departure Prevention detects lane markings, and if the Subaru vehicle is about to depart from its path, the system assists steering operation to keep the vehicle within its lane. To set your preference for Lane Departure Prevention:

7. From **Home**, touch the **Vehicle icon**
8. Touch the **Driving Assistance tab**
9. Then touch **Lane Departure Prevention Function**
10. Select your preference:
 - A. **All Functions**
 - B. **Lane Departure Prevention Only** (no warning buzzer)
 - C. **Warning Buzzer Only** (no steering assistance)
 - D. **Off**



Note: Changes made to these preferences will remain, even after the ignition is cycled.

Get to Know Vehicle Control Settings, continued

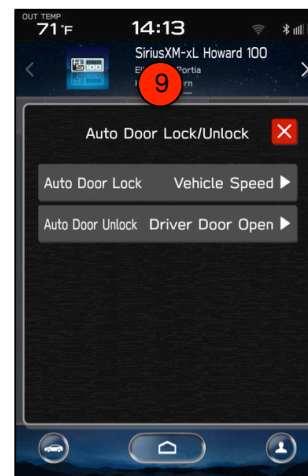
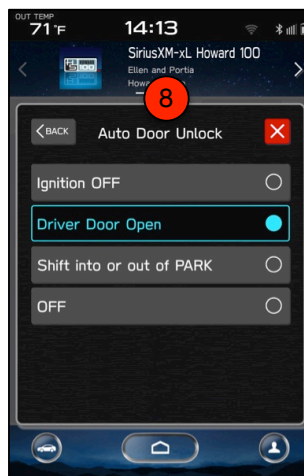
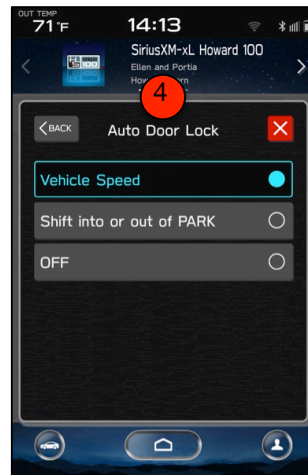
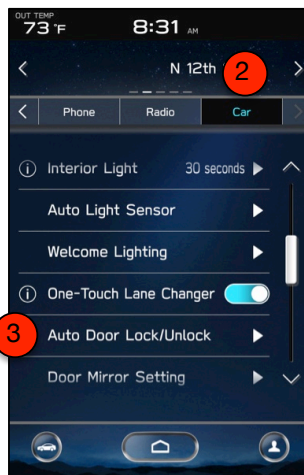
POWER DOOR LOCKS

Automatic Power Door Locks can be set to lock and unlock based on different settings. To change the automatic **Lock settings**:

1. From **Home**, touch **Settings**
2. Touch the **Car** tab
3. Select **Auto Door Lock/Unlock**
4. Select one of these settings for **automatic locking**:
 - A. Based on **Vehicle Speed**
 - B. **Shift into or out of Park**
 - C. **Off**

To change the automatic **Unlock settings**:

5. From **Home**, touch **Settings**
6. Touch the **Car** tab
7. Select **Auto Door Lock/Unlock**
8. Select one of these settings for **automatic unlocking**:
 - C. **Ignition Off**
 - D. **Driver Door Open**
 - E. **Shift into or out of Park**
 - F. **Off**
9. Once complete, your settings will be displayed



Get to Know Vehicle Control Settings, continued

POWER REAR GATE MEMORY HEIGHT

Setting the memory height works differently than in the previous-generation Outback. First, make sure the **Memory function is turned On**. To do that:

1. From **Home**, touch **Settings**
2. Touch the **Car** tab
3. Scroll and touch **Power Rear Gate**
4. Turn **Power Rear Gate Memory** slider On



Then walk to the back of the vehicle with the keyless access fob in your hand and:

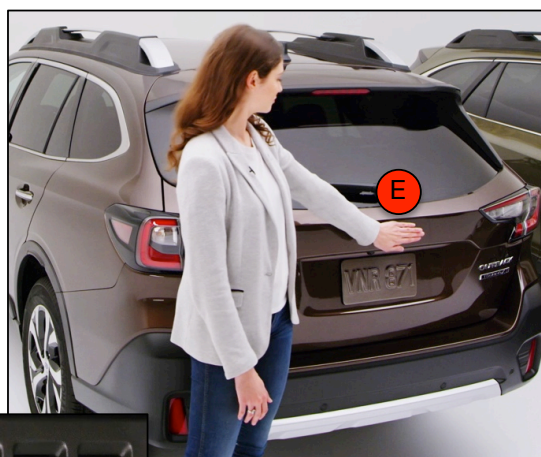
- A. **Open the rear gate with the key fob** or the electronic release
- B. When it rises midway, **stop the operation by pressing the Power Rear Gate button** on the fob
- C. **Slowly, adjust the gate height by hand**. Do not force it or move it too quickly
- D. Register this memory height by **pressing and holding the PRG button in the rear gate** until you hear an audible confirmation and the hazard lights flash



HANDS-FREE PRG

Practice the new hands-free PRG function:

5. Make sure the **PRG Hands-Free button** on the lower left dashboard is in the **Active position** (button out vs. pushed in)
6. With the **ignition Off** and the **key fob in your hand**:
 - E. Walk up to the rear gate, and **move your hand** (or elbow) **close to the Subaru badge** and hold it there. Do not touch the badge or the rear gate
 - F. In about 2 seconds **you'll hear an electronic chirp**. As soon as you hear that sound, **move your hand away**. The rear gate will open automatically



Get to Know Vehicle Control Settings, continued

DRIVER'S SEAT/EXTERIOR MIRROR MEMORY

Adjust the driver's seat and exterior mirror positions with the **parking brake On**, the **transmission in Park** and the **ignition switch On**. There are two ways to register these positions in memory:

- 1 Press the "Set" button, then **press either "1" or "2" within 5 seconds**
- 2 While **pressing and holding** the "Set" button, **press either "1" or "2" at the same time**
3. An electronic chirp will confirm registration

To register your **reverse tilt-down angle**:

4. With the **ignition On** and your **foot on the brake pedal**, move the gear lever to "R." The passenger-side exterior mirror will tilt down
- 5 Now, **adjust the mirror angle**
6. Next, move the gear selection to "P." The mirror will return to its original position
7. Set this new tilt-down position by **using either memory setting method from above**



POWER FOLDING EXTERIOR MIRRORS

The power folding mirror switch (if equipped) operates when the **ignition switch** is in the "On" or "Acc" position.

- 8 To fold the outside mirrors, **press the power folding mirror switch**
9. To unfold the mirrors, press the switch again
- 10 The mirrors **will automatically fold** when the power folding mirror switch is in the "unfold" position, the ignition switch is turned Off, and **the doors are locked**
11. The mirrors **will automatically unfold** when **the doors are unlocked**
- 12 Both the power folding feature and the reverse-tilt down feature **can be turned Off**:
D. Touch **Home > Settings > Car > Door Mirror Setting**

