



# 2021 GV80

## Product Reference Guide



### Key Features

“Genesis Complete Confidence”

#### Safety Technology

- 10 Airbags, including front center airbag<sup>22</sup>
- Driver Attention Warning<sup>12</sup>
- Forward Attention Warning<sup>13</sup> (3.5T Prestige)
- Forward Collision Avoidance-Assist w/ Pedestrian & Cyclist, Lane-Change Oncoming, Junction Turning, Junction Crossing, Lane-Change Side, and Evasive Steering Torque Assist<sup>8</sup>
- Blind-Spot Collision-Avoidance Assist<sup>9</sup>
- Blind-Spot View Monitor<sup>2</sup> (video) (All except base 2.5T RWD, 2.5T AWD, 2.5T Advanced and base 3.5T)
- Lane Keeping Assist<sup>20</sup> & Lane Following Assist<sup>19</sup>
- Rear Cross-Traffic Collision-Avoidance Assist<sup>3</sup>
- Parking Collision-Avoidance Assist – Rear<sup>4</sup> (All except base 2.5T RWD, 2.5T AWD, 2.5T Advanced and base 3.5T)

#### Powertrain Technology

- 2.5L Turbocharged GDI + MPI 4-cylinder engine
- 3.5L Twin Turbocharged GDI + MPI V6 engine
- 8-speed Electronic Automatic Transmission with Rotary Dial Selector and Paddle Shifters
- Drive Mode Select – Comfort, Smart, Eco, Sport and Custom Modes
- All-Wheel Drive (AWD models)

#### EPA Estimated Fuel Economy Ratings (MPG)

- 21/25/23 (2.5T RWD)
- 21/25/22 (2.5T AWD)
- 18/23/20 (3.5T AWD)

#### Comfort and Convenience

- Lexicon® Quantum Logic® Surround Sound Audio System w/ 21 Speakers (except base 2.5T RWD, 2.5T AWD, base 3.5T)
- Navigation w/ 14.5-inch High-Definition LCD Display, Cloud-based Voice Recognition
- Genesis Connected Services
- Wireless Charging Pad for Qi Compatible Devices (all versions except base 2.5T RWD)
- Highway Driving Assist II<sup>7</sup>
- Digital Key<sup>16</sup> (all versions except base 2.5T RWD)
- Integrated Memory System
- 12.3-inch 3D Digital Instrument Cluster (3.5T Prestige)
- Power Hands-free Smart Liftgate w/ Auto Open<sup>15</sup>
- Panoramic Sunroof (all versions except base 2.5T RWD)
- 40/20/40 Split-folding 2<sup>nd</sup>-row seats
- 50/50 Power Split-folding 3<sup>rd</sup>-row seats (3.5T Advanced+)
- Android Auto™ and Apple CarPlay™
- Heads-up Display (2.5T AWD Prestige, 3.5T Advanced, 3.5T Advanced+, 3.5T Prestige)

# 2021 GV80 FEATURES & SPECIFICATIONS

## Trim Levels and Packages

MODEL CODE	MODELS	MSRP*
V0422R45	2.5T RWD	\$48,900
V0422R45	2.5T RWD Advanced	\$52,800
V0422R45	2.5T RWD Prestige	\$57,050
V0422A45	2.5T AWD	\$54,650
V0422A45	2.5T AWD Advanced	\$59,000
V0422A45	2.5T AWD Prestige	\$63,400
V0462A65	3.5T AWD	\$59,150
V0462A65	3.5T AWD Advanced	\$64,350
V0462A65	3.5T AWD + Advanced	\$65,050
V0472A65	3.5T AWD Prestige	\$70,950

## Color Chart

Color Name	Interior – Leather Seating Surfaces				
	Black/Black	Black/Beige	Urban Ground/ Beige	Dark Blue/ Dune	Dark Brown/ Green
Uyuni White	•	—	—	•	—
Vik Black	•	•	•	—	—
Savile Silver	•	•	•	•	—
Himalayan Gray	•	•	•	•	—
Adriatic Blue	•	—	•	•	—
Gold Coast Silver	•	•	—	•	—
Alta White	•	—	—	•	—
Lima Red	•	—	•	—	—
Cardiff Green	—	—	•	—	•

• Standard — Not Available

\*MSRP does not include destination charges. Tax, title and license fees extra. Actual dealer prices may vary.

# 2021 GV80 FEATURES & SPECIFICATIONS

MECHANICAL			
		2.5T	3.5T
2.5L Turbocharged GDI + MPI DOHC 16-valve 4-cylinder engine		•	–
3.5L Twin Turbocharged GDI + MPI DOHC 24-valve V6 engine		–	•
Horsepower (hp @ rpm)		300 @ 5,800 (Premium - est.)	375 @ 5,800 (Premium - est.)
Torque (lb.-ft. @ rpm)		311 @ 1,650-4,000 (Premium - est.)	391 @ 1,300-4,500 (Premium - est.)
Recommended Fuel		Unleaded Premium	Unleaded Premium
Transmission Type	8-speed Electronic Automatic with Rotary Dial Selector and Paddle Shifters	•	•
Shift-by-Wire		•	•
Drive Mode Select – Comfort, Smart, Eco, Sport and Custom Modes		•	•
Idle Stop and Go		•	•
Rear-Wheel Drive		•	–
All-Wheel Drive		◦	•
Hillstart Assist Control		•	•
4-wheel Ventilated Disc Anti-lock Braking System		•	•
Electronic Parking Brake w/ Automatic Vehicle Hold		•	•
Electric Rack Mounted Motor Driven Power Steering		•	•
Variable Gear Ratio Steering Rack		•	•
Turning Diameter (curb to curb, ft.) (RWD/AWD)		39.3 / 39.3	– / 39.3
Front Suspension Design		Multi-link	Multi-link
Rear Suspension Design		Multi-link	Multi-link
Gas Shock Absorbers		•	•
Rear Self-leveling Suspension		◦	–
Electronically Controlled Suspension w/ Road Preview		◦	•
Electronic Limited-slip Differential		–	◦

• Standard ◦ Optional – Not Available

# 2021 GV80 FEATURES & SPECIFICATIONS

	2.5T RWD	2.5T RWD Advanced	2.5T RWD Prestige	2.5T AWD	2.5T AWD Advanced	2.5T AWD Prestige	3.5T AWD	3.5T AWD Advanced	3.5T AWD Advanced +	3.5T AWD Prestige
<b>WHEELS</b>										
19 x 8.5J Aluminum Alloy	● Machine- Finished Medium Metallic Gray	● Machine- Finished Medium Metallic Gray	–	● Machine- Finished Medium Metallic Gray	–	–	–	–	–	–
20 x 8.5J Aluminum Alloy	–	–	● Machine- Finished Medium Metallic Gray	–	● Machine- Finished Medium Metallic Gray	–	● Machine- Finished Medium Metallic Gray	● Machine- Finished Medium Metallic Gray	● Machine- Finished Medium Metallic Gray	–
22 x 9.5J Aluminum Alloy	–	–	–	–	–	● Medium Sputtering	–	–	–	● Medium Sputtering
<b>TIRES</b>										
P265/55R19 Pirelli® Scorpion™ Zero all-season	●	●	–	●	–	–	–	–	–	–
P265/50R20 Michelin® Primacy™ Tour all-season	–	–	●	–	●	–	●	●	●	–
P265/40R22 Michelin® Primacy™ Tour all-season	–	–	–	–	–	●	–	–	–	●
Spare Tire Compact Temporary Use	●	●	●	●	●	–	●	●	–	–
Tire Mobility Kit	–	–	–	–	–	●	–	–	●	●

Sirius, XM and all related marks and logos are trademarks of Sirius XM Radio Inc. Bluetooth is a registered trademark of Bluetooth SIG, Inc.

● Standard ○ Optional – Not Available



19-inch Aluminum Alloy



20-inch Aluminum Alloy



22-inch Aluminum Alloy

# 2021 GV80 FEATURES & SPECIFICATIONS

	2.5T RWD	2.5T RWD Advanced	2.5T RWD Prestige	2.5T AWD	2.5T AWD Advanced	2.5T AWD Prestige	3.5T AWD	3.5T AWD Advanced	3.5T AWD Advanced +	3.5T AWD Prestige
<b>EXTERIOR</b>										
Full LED Quad Headlights	•	•	•	•	•	•	•	•	•	•
Automatic Headlights	•	•	•	•	•	•	•	•	•	•
High Beam Assist	•	•	•	•	•	•	•	•	•	•
LED Daytime Running Lights	•	•	•	•	•	•	•	•	•	•
LED Taillights	•	•	•	•	•	•	•	•	•	•
Heated Dual Power Mirrors with Turn Signal Indicators	•	•	•	•	•	•	•	•	•	•
Dual Power-folding Mirrors	•	•	•	•	•	•	•	•	•	•
Auto-dimming Outside Mirrors	•	•	•	•	•	•	•	•	•	•
Approach Lights with “Genesis” Logo	•	•	•	•	•	•	•	•	•	•
Rearview Camera	•	•	•	•	•	•	•	•	•	•
Surround View Monitor <sup>10</sup>	–	–	•	–	•	•	–	•	•	•
Parking Distance Warning – Front & Rear	•	•	•	•	•	•	•	•	•	•
Remote Smart Parking Assist <sup>18</sup>	–	–	•	–	•	•	–	•	•	•
Wipers, Speed Sensitive 2-speed w/ Variable Intermittent	•	•	•	•	•	•	•	•	•	•
Rain-sensing Wipers	•	•	•	•	•	•	•	•	•	•
Auto-defogging Windshield	•	•	•	•	•	•	•	•	•	•
Privacy Glass – 3rd row, Back Window	•	•	•	•	•	•	•	•	•	•
Panoramic Sunroof	–	•	•	•	•	•	•	•	•	•
Power Door Closure	–	–	–	–	–	–	–	–	–	•
Power Hands-free Smart Liftgate w/ Auto Open <sup>15</sup>	•	•	•	•	•	•	•	•	•	•

Sirius, XM and all related marks and logos are trademarks of Sirius XM Radio Inc. Bluetooth is a registered trademark of Bluetooth SIG, Inc.

• Standard   ◦ Optional   – Not Available

# 2021 GV80 FEATURES & SPECIFICATIONS

	2.5T RWD	2.5T RWD Advanced	2.5T RWD Prestige	2.5T AWD	2.5T AWD Advanced	2.5T AWD Prestige	3.5T AWD	3.5T AWD Advanced	3.5T AWD Advanced +	3.5T AWD Prestige
<b>INTERIOR</b>										
Seating Capacity (Passengers)	5	5	5	5	5	5	5	5	7	5
<b>SEATING SURFACES</b>										
Leatherette	●	●	—	●	—	—	●	—	—	—
Leather	—	—	●	—	●	●	—	●	●	—
Nappa Leather	—	—	—	—	—	—	—	—	—	●
<b>FRONT SEATS</b>										
12-way Power Driver's Seat (4-way power adjustable lumbar support)	●	●	—	●	●	—	●	—	—	—
16-way Power Driver's Seat (w/ adjustable side bolsters, cushion extension and 4-way Power Lumbar)	—	—	●	—	—	●	—	●	●	●
Ergo Motion Driver's Seat	—	—	●	—	—	●	—	●	●	●
Integrated Memory System	●	●	●	●	●	●	●	●	●	●
12-way Power Passenger's Seat (4-way power adjustable lumbar support)	●	●	●	●	●	●	●	●	●	●
Front Passenger's Seat Walk-in Device	●	●	●	●	●	●	●	●	●	●
Heated Front Seats	●	●	●	●	●	●	●	●	●	●
Ventilated Front Seats	—	●	●	●	●	●	●	●	●	●
<b>2<sup>nd</sup>-ROW SEATS</b>										
40/20/40 Split-folding	●	●	●	●	●	●	●	●	●	●
Heated 2 <sup>nd</sup> -row Seats	—	—	●	—	—	●	—	●	●	●
Power Seat Recline, Slide and Cushion Tilt	—	—	—	—	—	—	—	—	—	●
Center Armrest w/ Dual Cupholders	●	●	●	●	●	●	●	●	●	●
<b>3<sup>rd</sup>-ROW SEATS</b>										
50/50 Power Split-folding	—	—	—	—	—	—	—	—	●	—
<b>COMFORT/CONVENIENCE</b>										
AM/FM/HD Radio™/SiriusXM®/ MP3 Audio System w/ 12 Speakers	●	●	●	●	●	●	●	●	●	●
AM/FM/HD Radio™/SiriusXM® Lexicon® Quantum Logic® Surround Sound Audio System w/ 21 Speakers	—	●	●	—	●	●	—	●	●	●

Sirius, XM and all related marks and logos are trademarks of Sirius XM Radio Inc. Bluetooth is a registered trademark of Bluetooth SIG, Inc.

● Standard ○ Optional — Not Available

# 2021 GV80 FEATURES & SPECIFICATIONS

	2.5T RWD	2.5T RWD Advanced	2.5T RWD Prestige	2.5T AWD	2.5T AWD Advanced	2.5T AWD Prestige	3.5T AWD	3.5T AWD Advanced	3.5T AWD Advanced +	3.5T AWD Prestige
Navigation w/ 14.5-inch High-Definition LCD Display, Cloud-based Voice Recognition	•	•	•	•	•	•	•	•	•	•
Multimedia Controller w/ Character Recognition and Gesture Capability	•	•	•	•	•	•	•	•	•	•
Apple CarPlay™ and Android Auto™	•	•	•	•	•	•	•	•	•	•
Wireless Charging Pad for Qi Compatible Devices	–	•	•	•	•	•	•	•	•	•
USB/Aux 2 front (1 data/charge, 1 charge only) & 2 rear (charge only)	•	•	•	•	•	•	•	•	•	•
Bluetooth® Hands-free Phone System	•	•	•	•	•	•	•	•	•	•
Genesis Connected Services (3-years complimentary)	•	•	•	•	•	•	•	•	•	•
Road Active Noise Cancellation	–	–	–	–	–	•	–	–	–	•
Sunvisors w/ Illuminated Driver and Passenger Vanity Mirror	•	•	•	•	•	•	•	•	•	•
Rotary Dial Transmission Gear Selector	•	•	•	•	•	•	•	•	•	•
Carpeted Floor Mats	•	•	•	•	•	•	•	•	•	•
2 <sup>nd</sup> -row Vanity Mirrors	–	–	–	–	–	–	–	–	–	•
Dual Zone Automatic Temperature Control	•	•	•	•	•	•	•	•	•	•
3-zone Automatic Temperature Control	–	–	•	–	–	•	–	•	•	•
Leather-wrapped Steering Wheel w/ Paddle Shifters	•	•	•	•	•	•	•	•	•	•
Power Tilt & Telescopic Steering Wheel	•	•	•	•	•	•	•	•	•	•
Heated Steering Wheel	–	•	•	•	•	•	•	•	•	•
8-inch LCD Instrument Cluster & Analog Gauge	•	•	•	•	•	•	•	•	•	–
12.3-inch 3D Digital Instrument Cluster	–	–	–	–	–	–	–	–	–	•
Smart Cruise Control w/ Stop & Go Capability <sup>1</sup>	•	•	•	•	•	•	•	•	•	•
Highway Driving Assist II <sup>7</sup>	•	•	•	•	•	•	•	•	•	•
Heads-up Display	–	–	–	–	–	•	–	•	•	•
Rear Side Window Sunshades	–	•	•	•	•	•	•	•	•	–

Sirius, XM and all related marks and logos are trademarks of Sirius XM Radio Inc. Bluetooth is a registered trademark of Bluetooth SIG, Inc.

• Standard ○ Optional – Not Available



# 2021 GV80 FEATURES & SPECIFICATIONS

		2.5T RWD	2.5T RWD Advanced	2.5T RWD Prestige	2.5T AWD	2.5T AWD Advanced	2.5T AWD Prestige	3.5T AWD	3.5T AWD Advanced	3.5T AWD Advanced +	3.5T AWD Prestige
Power Rear Side Window Sunshades		—	—	—	—	—	—	—	—	—	•
Cargo Cover		•	•	•	•	•	•	•	•	•	•
Proximity Key Entry w/ Push Button Start		•	•	•	•	•	•	•	•	•	•
Digital Key <sup>16</sup>		—	•	•	•	•	•	•	•	•	•
Ambient LED Interior Lighting (adjustable with different colors)		•	•	•	•	•	•	•	•	•	•
Multi-function Trip Computer		•	•	•	•	•	•	•	•	•	•
Auto-dimming Rearview Mirror w/ HomeLink®		•	•	•	•	•	•	•	•	•	•
<b>SAFETY/SECURITY</b>											
10 Airbags <sup>22</sup>	Front – Driver and Passenger (2)	•	•	•	•	•	•	•	•	•	•
	Front – Driver and Passenger side-impact (2)	•	•	•	•	•	•	•	•	•	•
	Driver Knee (1)	•	•	•	•	•	•	•	•	•	•
	Front, Center (1)	•	•	•	•	•	•	•	•	•	•
	2 <sup>nd</sup> -row Side Impact (2)	•	•	•	•	•	•	•	•	•	•
	Side Curtain (2)	•	•	•	•	•	•	•	•	•	•
Vehicle Stability Management System		•	•	•	•	•	•	•	•	•	•
Electronic Stability Control w/ Traction Control System		•	•	•	•	•	•	•	•	•	•
Anti-lock Braking System		•	•	•	•	•	•	•	•	•	•
Brake Assist		•	•	•	•	•	•	•	•	•	•
Blind-Spot Collision-Avoidance Assist <sup>9</sup> w/ Rear Cross-Traffic Collision-Avoidance Assist <sup>3</sup>		•	•	•	•	•	•	•	•	•	•
Blind-Spot View Monitor <sup>2</sup>		—	—	•	—	•	•	—	•	•	•
Lane Departure Warning w/ Lane Keeping Assist <sup>20</sup> and Lane Following Assist <sup>19</sup>		•	•	•	•	•	•	•	•	•	•

Sirius, XM and all related marks and logos are trademarks of Sirius XM Radio Inc. Bluetooth is a registered trademark of Bluetooth SIG, Inc.

• Standard ○ Optional — Not Available



# 2021 GV80 FEATURES & SPECIFICATIONS

	2.5T RWD	2.5T RWD Advanced	2.5T RWD Prestige	2.5T AWD	2.5T AWD Advanced	2.5T AWD Prestige	3.5T AWD	3.5T AWD Advanced	3.5T AWD Advanced +	3.5T AWD Prestige
Forward Collision-Avoidance Assist w/ Pedestrian Detection, Lane-Change Oncoming, Junction Turning, Junction Crossing, Lane-Change Side and Evasive Steering Torque Assist <sup>8</sup>	•	•	•	•	•	•	•	•	•	•
Parking Collision-Avoidance Assist - Rear <sup>4</sup>	—	—	•	—	•	•	—	•	•	•
Driver Attention Warning <sup>12</sup>	•	•	•	•	•	•	•	•	•	•
Forward Attention Warning <sup>13</sup>	—	—	—	—	—	—	—	—	—	•
Safe Exit Assist w/ Power Child Lock <sup>6</sup>	•	•	•	•	•	•	•	•	•	•
Rear Occupant Alert (Ultrasonic) <sup>21</sup>	—	•	•	•	•	•	•	•	•	•
DIMENSIONS/WEIGHTS/CAPACITIES										
Wheelbase	116.3 inches									
Overall Length	194.7 inches									
Overall Width	77.8 inches									
Overall Height	67.5 inches									
Curb Weight (lbs.) – RWD/AWD	4,506-4,707/4,742-4,850						(AWD only) 4,907-5,038 (5-pass); 4,907-5,104 (7-pass)			
Maximum Towing Capacity (lbs.) – RWD/AWD	6,000/6,000						6,000/6,000			
Fuel Tank (gallons)	21.1						21.1			
FUEL ECONOMY/EPA-ESTIMATED*										
City/Highway/Combined (MPG)	21/25/23 (RWD)			21/25/22 (AWD)			18/23/20 (AWD)			

\*Fuel economy estimated by EPA for comparison only. Your actual mileage may vary with options, driving conditions, driving habits and the vehicle's condition.

Sirius, XM and all related marks and logos are trademarks of Sirius XM Radio Inc. Bluetooth is a registered trademark of Bluetooth SIG, Inc.

• Standard ○ Optional – Not Available

## 2021 GV80 FEATURES & SPECIFICATIONS

ACCESSORIES	
ITEM	MSRP*
Rear Bumper Appliqué	\$80
Wheel Locks	\$75
Cargo Tray	\$150
First Aid Kit	\$45
All-season Floor Mats	TBD
Tow Hitch	\$395
Illuminated Door Scuff Plates	TBD
Cargo Package (Cargo Net, Cargo Tray, First Aid Kit)	TBD

\*Accessory MSRP – Dealer prices and availability are subject to change without notice.

### GENESIS COMPLETE CONFIDENCE

POWERTRAIN LIMITED WARRANTY	10 YEARS / 100,000 MILES
NEW VEHICLE LIMITED WARRANTY	5 YEARS / 60,000 MILES
ANTI-PERFORATION WARRANTY	7 YEARS / UNLIMITED MILES
24-HOUR ROADSIDE ASSISTANCE	5 YEARS / UNLIMITED MILES
COMPLIMENTARY SCHEDULED MAINTENANCE	3 YEARS / 36,000 MILES
GENESIS SERVICE VALET	3 YEARS / 36,000 MILES
GENESIS CONNECTED SERVICES	3 YEARS COMPLIMENTARY
MAP CARE	3 YEARS FREE ANNUAL MAP UPDATES



## 2021 GV80 TECHNOLOGIES



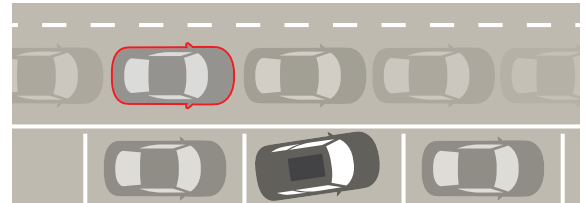
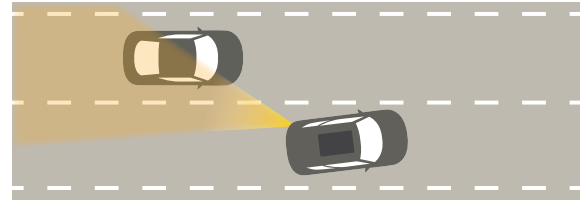
### CLICK ON FEATURE TO LINK TO ITS EXPLANATION

- [Blind-Spot Collision-Avoidance Assist<sup>9</sup>](#)
- [Blind-Spot View Monitor<sup>2</sup>](#)
- [Digital Key<sup>16</sup>](#)
- [Drive Mode Select](#)
- [Driver Attention Warning<sup>12</sup>](#)
- [Electronically Controlled Suspension w/ Road Preview](#)
- [Ergo Motion Driver's Seat](#)
- [Forward Attention Warning<sup>13</sup>](#)
- [Forward Collision Avoidance-Assist w/ Pedestrian& Cyclist, Lane-Change Oncoming, Junction Turning, Junction Crossing, Lane-Change Side, and Evasive Steering Torque Assist<sup>8</sup>](#)
- [Genesis Connected Services](#)
- [Heads-up Display](#)
- [Highway Driving Assist II<sup>7</sup>](#)
- [Lane Following Assist<sup>9</sup>](#)
- [Lane Keeping Assist<sup>20</sup>](#)
- [Navigation-Based Smart Cruise Control w/ Auto Curve Slowdown<sup>1</sup>](#)
- [Parking Collision-Avoidance Assist – Rear<sup>4</sup>](#)
- [Parking Distance Warning – Front & Rear](#)
- [Passenger Talk and Quiet Mode](#)
- [Power Hands-free Smart Liftgate w/ Auto Open<sup>15</sup>](#)
- [Rear Cross-Traffic Collision-Avoidance Assist<sup>3</sup>](#)
- [Remote Smart Parking Assist](#)
- [Road Active Noise Cancellation](#)
- [Safe Exit Assist w/ Power Child Lock<sup>6</sup>](#)
- [Smart Cruise Control with Machine Learning<sup>1</sup>](#)
- [Surround View Monitor<sup>10</sup>](#)

## Blind-Spot Collision-Avoidance Assist<sup>9</sup>

Active blind-spot detection technology helps monitor traffic around the car. The system uses the rear corner radar to warn the driver of a vehicle in the vehicle's blind spot. The initial alert is warning lights in the outside mirrors. If the driver ignores alerts and attempts to change lanes, the system can automatically apply the left or right front brake to help avoid a collision.

- **Parking Exit Assist<sup>5</sup>** helps prevent collisions when exiting parallel parking spots. Provides visual, audible alerts and braking. Can detect two lanes over.

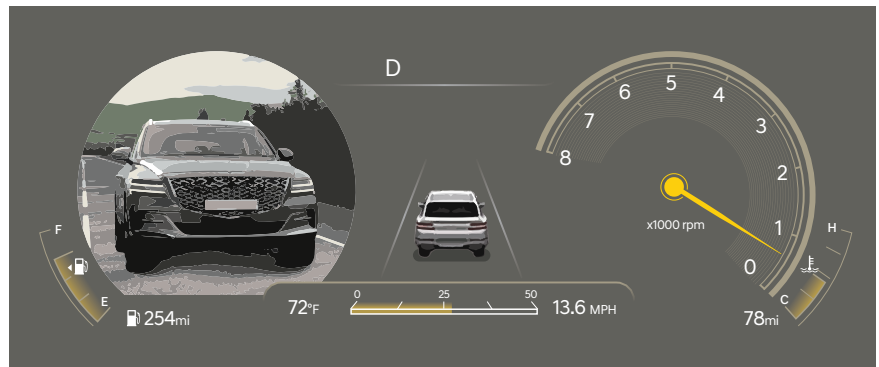
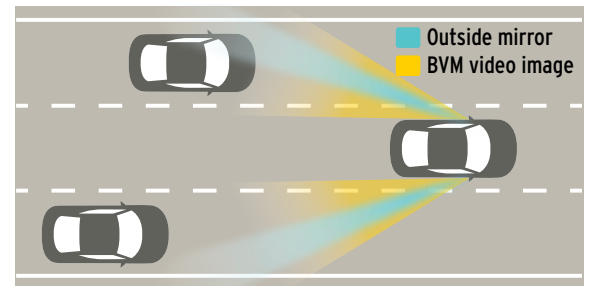


## Blind-Spot View Monitor<sup>2</sup>

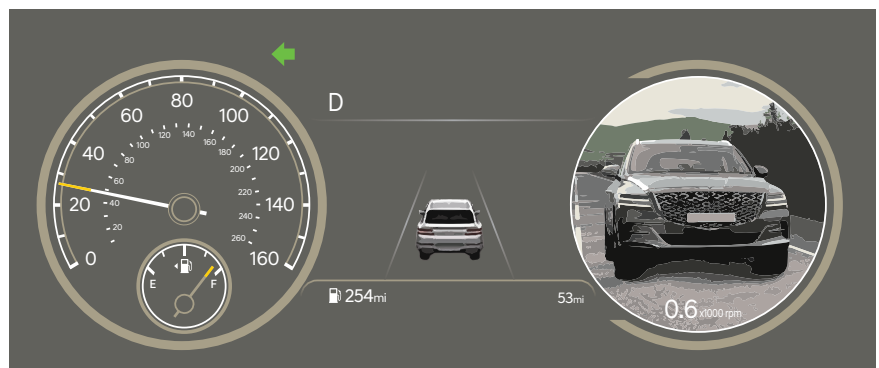
(2.5T Prestige, 2.5T AWD Advanced, 2.5T AWD Prestige, 3.5T Advanced, 3.5T Advanced+, 3.5T Prestige)

Uses the side-view cameras that support Surround View Monitor functions. Assists the driver in changing lanes by displaying a video of the rear side view and blind-spot area in the vehicle's instrument cluster when the driver activates the turn signal. Video shows wider field of vision than side mirror.

- In the Digital 3D cluster the blind-spot video image can appear over the left or right gauges, corresponding to left or right turns.
- In the 8-inch cluster the blind-spot video image appears over only the right-hand digital gauge.



Digital 3D Gauge Cluster



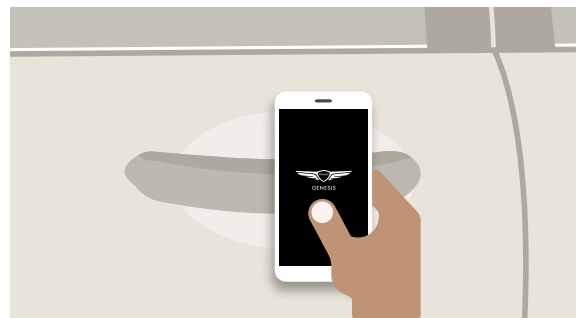
8-inch Color LCD Display + Analog Gauge

## Digital Key<sup>16</sup>

**(2.5T RWD Advanced, 2.5T RWD Prestige, 2.5T AWD all, 3.5T all)**

Use the Smartphone app or Near Field Communication Key Card to lock/unlock and start vehicle. Digital Keys are tied to user Cloud profiles to sync vehicle settings for individual drivers. Digital Keys can be easily and securely shared with other drivers for vehicle access.

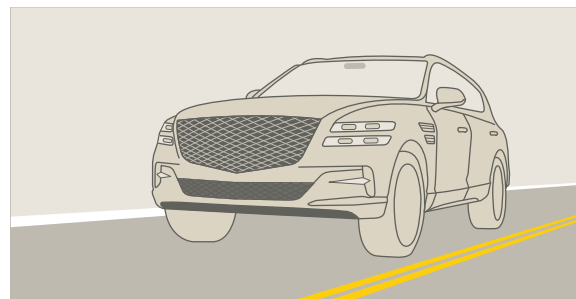
- Android smartphone app can also lock/unlock, start vehicle, and open the liftgate
- NFC Key Card can lock/unlock and start vehicle



## Drive Mode Select

Driver selectable modes include Comfort, Smart, Eco, Sport, and Custom.

- Drive Modes allow the driver to customize performance and comfort. Drive Modes adjust response of engine and transmission, steering feel, and suspension (on Electronically Controlled Suspensions). Integrated with available AWD.



## Driver Attention Warning<sup>12</sup>

Monitors the driving position to help detect reckless or fatigued driving and recommend that the driver take a break. Displays driving status level in the multi-information display. Analyzes the driving pattern through vehicle signals such as steering angle, steering torque, and vehicle position in traffic lane. Attracts driver's attention with a pop-up message and audible warning suggesting that the driver "consider taking a break."

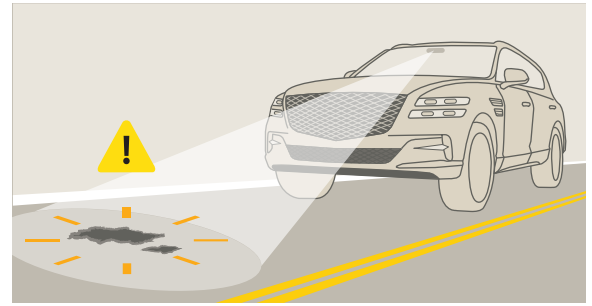


## Electronically Controlled Suspension w/ Road Preview

**(2.5T AWD Prestige, 3.5T all)**

Uses forward-facing camera to read road surface ahead.

- Preconditions the electronic suspension to smooth the impact of speed bumps and pot holes

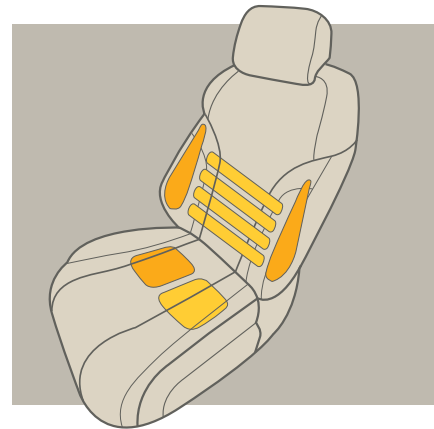


## Ergo Motion Driver's Seat

**(2.5T Prestige, 2.5T AWD Prestige, 3.5T Advanced, 3.5T Advanced+, 3.5T Prestige)**

Utilizes seven air bladders inside the seat to provide improved seat comfort and posture correction.

- Includes optimized side support for Comfort and Sport Drive Modes; also firms support for higher vehicle speeds
- Stretching Mode provides individual control of air bladders for a massage-like function
- Pop-up display on center touchscreen (when seat controls are touched) provides feedback of operation in real time



## Forward Attention Warning<sup>13</sup>

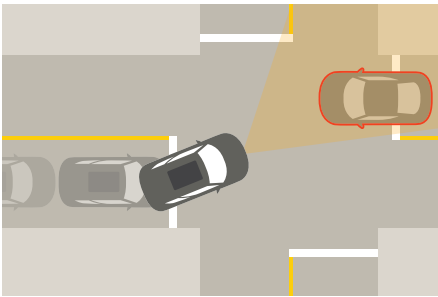
**(3.5T Prestige)**

For added safety, on 3.5T Prestige models with 3D Digital Gauges, an infrared camera helps track the driver's eyes to verify they are looking forward, at the road. If the driver is not looking forward, for extended periods, the driver will receive audible and gauge cluster alerts.

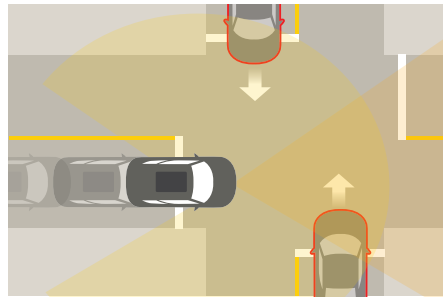


## Forward Collision-Avoidance Assist w/ Pedestrian & Cyclist Detection, Lane-Change Oncoming, Junction Turning, Junction Crossing, Lane-Change Side & Evasive Steering Torque Assist<sup>8</sup>

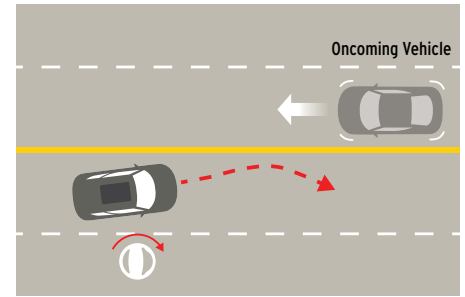
Uses forward-view windshield camera, front radar, and front corner radars to “see” what is happening up ahead to avoid a potential collision or reduce its impact. The system is designed to help detect a vehicle or pedestrian or cyclist and warn the driver. If the driver doesn’t maneuver to avoid impact, the system can apply emergency braking or steering assistance, depending on the situation.



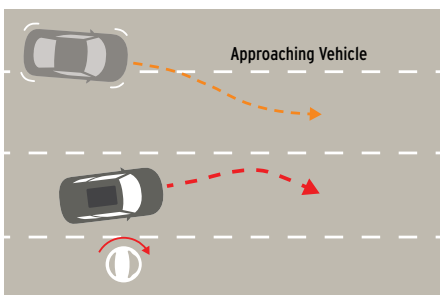
**Junction Turning** – When driver uses turn signal for a left turn at an intersection, the system alerts the driver and can automatically brake if an oncoming vehicle is detected in the opposite lane.



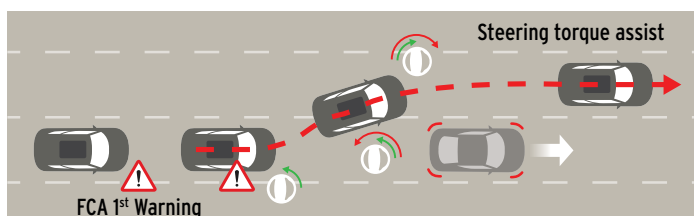
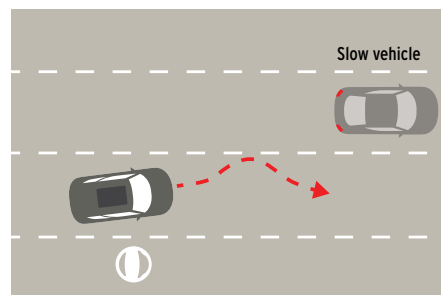
**Junction Crossing** – When entering an intersection, after alert, brakes can be automatically applied if a crossing vehicle coming from left or right is detected



**Lane-Change Oncoming** – When driving along a non-divided highway, this helps prevent collisions with a vehicle in an opposing lane. Alerts driver and assists with steering to help return vehicle to its lane.



**Lane-Change Side** – Uses front and rear corner radar to help prevent collisions when merging into another lane. After alert, can apply steering assist to help return to original lane. Able to see two lanes over.



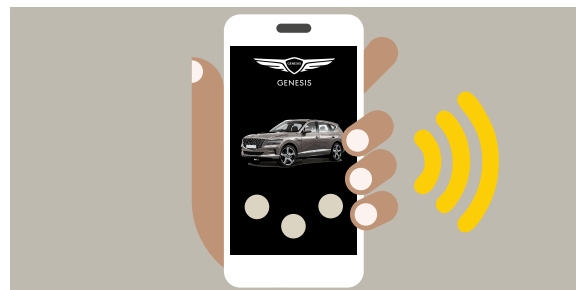
The **Evasive Steering Torque Assist** function will help avoid a collision with a vehicle, pedestrian or cyclist ahead in the same lane. When a risk of collision is detected, the Evasive Steering Torque Assist function will warn the driver and if the driver steers to avoid the collision it will assist the driver’s steering.



## Genesis Connected Services

Genesis Connected Services is a connected car platform with impressive remote vehicle features. Included as standard equipment on all Genesis models and backed by three years of complimentary services, it allows drivers to connect their vehicle through a smartphone app or online portal. Services include:

- Driver Profiles
- Message Center
- Surround View Monitor with Image Capture
  - Opens mirrors to capture image – max 3/hour
- Last Mile Guidance
- Calendar Sync & In-vehicle Notifications
- Valet Mode<sup>14</sup>
- Vehicle Status Enhancements:
  - Fuel Level
  - Battery Discharge Notification



### Connected Care

- Automated Collision Notification
- SOS Emergency Notification
- Monthly Vehicle Health Report
- Maintenance Reminder
- Enhanced Roadside Assistance
- Genesis Intelligent Assistant App

### Remote

- Remote Start w/ Climate Control
- Remote Door Lock/Unlock
- Stolen Vehicle Recovery
- Remote Horn and Lights
- Stolen Vehicle Recovery
- Car Finder

### Guidance (NAV Equipped Only)

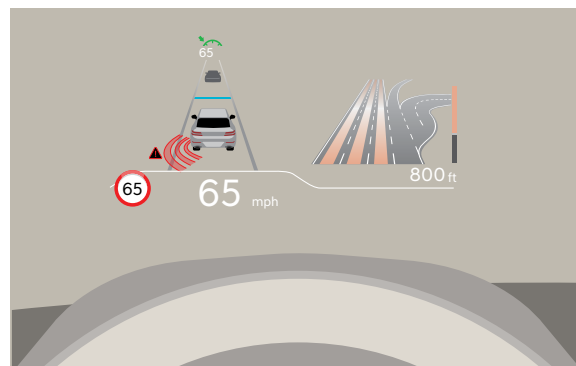
- Destination Search and Download
- Destination Send-to-Car
- MapCare Map Updates

## Heads-up Display

**(2.5T AWD Prestige, 3.5T Advanced, 3.5T Advanced+, 3.5T Prestige)**

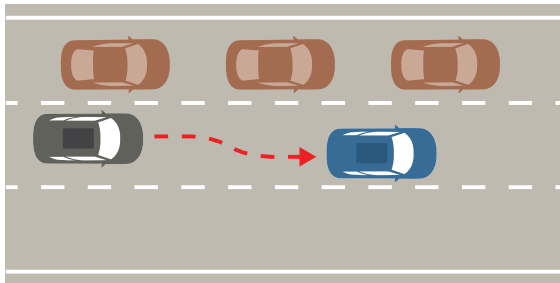
Displays relevant information in the driver's line of sight.

- Speed, cruise control, turn-by-turn navigation, Lane Keeping Assist, Blind-Spot Collision-Avoidance Assist, Forward Collision-Avoidance Assist, speed limit, and audio source can all be projected in the driver's line of sight – most projected items can be turned on and off
- Heads-up Display viewing position and settings are linked into the Integrated Memory System

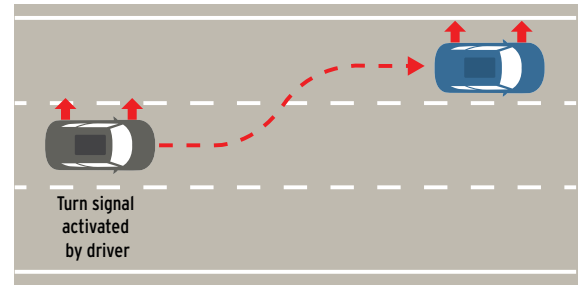


## Highway Driving Assist II<sup>7</sup>

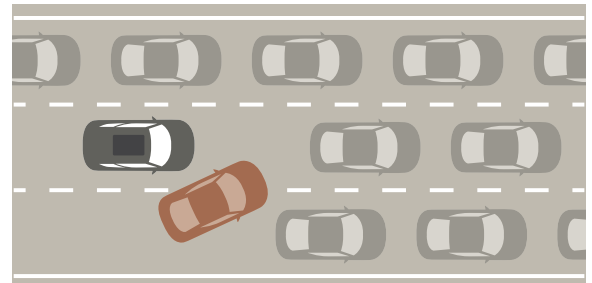
Assists driver in maintaining distance from cars ahead and maintaining the driving path. Assists with changing lanes when the driver operates the turn signal. Responds to vehicles that cut in at close range when driving at low speeds. Performs deflection driving in the current lane when a vehicle in the next lane moves close. Limits vehicle speed when lateral control (Lane Following Assist) is canceled due to continued hands-off driving. Adjusts steering feel according to Drive Mode.



Lane placement in drive lane




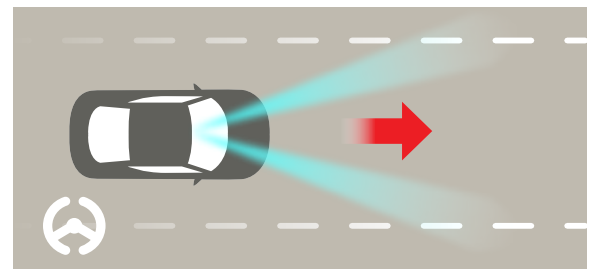
Lane change assist



Measures for cut-in

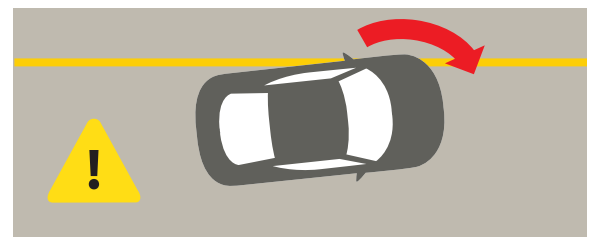
## Lane Following Assist<sup>19</sup>

Uses the windshield-mounted forward-view camera. Activated by the  button on the steering wheel, this driver-selectable feature gives steering assistance to help the driver stay in the center of their lane, by recognizing both lane markers and vehicles traveling ahead. If one lane marker is clear, it creates a “virtual lane” based on single lane markers and the vehicle in front. If both lane markers are unclear, it follows the preceding vehicle in a “virtual path.”



## Lane Keeping Assist<sup>20</sup>

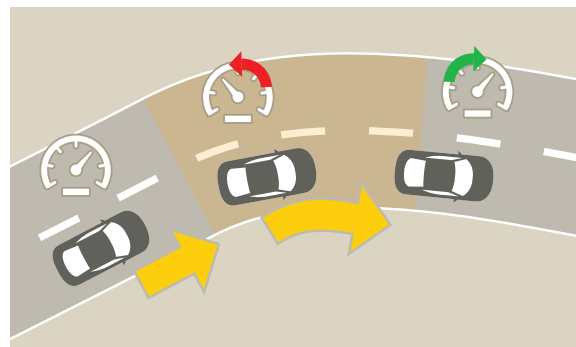
Uses the forward camera to recognize lane markers. Upon lane departure without signaling for a lane change, the system provides a visual and haptic steering wheel vibration to alert the driver, and steering assist to help guide the vehicle back to the lane.



## Navigation-Based Smart Cruise Control w/ Auto Curve Slowdown<sup>1</sup>

### Highway Auto Curve Slowdown

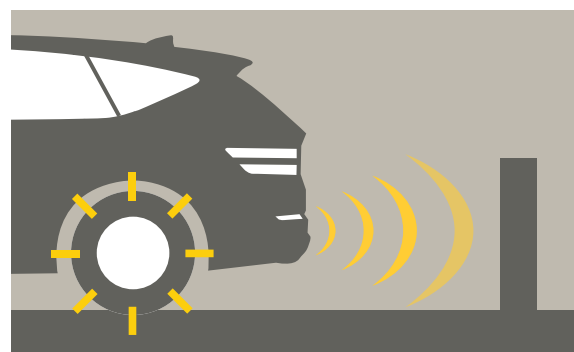
When selected under Driving Assist, this function uses navigation system data to reduce Smart Cruise Control speed for curves. After passing the curve, the speed will be returned to the original Smart Cruise Control setting.



## Parking Collision-Avoidance Assist – Rear<sup>4</sup>

(2.5T Prestige, 2.5T AWD Advanced, 2.5T AWD Prestige,  
3.5T Advanced, 3.5T Advanced+, 3.5T Prestige)

Helps prevent the vehicle from colliding with pedestrians or obstacles while parking or exiting a parking spot. The system provides a warning. If no action is taken, the brakes are then applied.



## Parking Distance Warning – Front & Rear

### Rear Parking Sensors

Uses sonar sensors in the rear bumper to sense objects nearby. Activates when the transmission is in Reverse. When an object is within 6 feet, the system sounds warning beeps. The beeps get faster as the vehicle approaches the object. If the object is less than 1 foot away, the warning tone sounds continuously.

- Rear system is automatic

### Front & Rear Sensor Activation

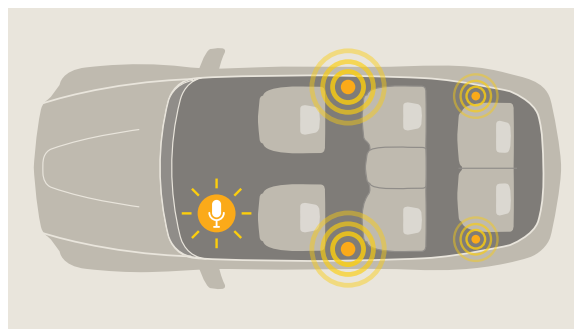
- Press the Parking Safety button to turn on Front/Rear Parking Distance Warning. Press the button again to turn the system off.

## Passenger Talk and Quiet Mode

These convenience features are accessed on the menu of the center display.

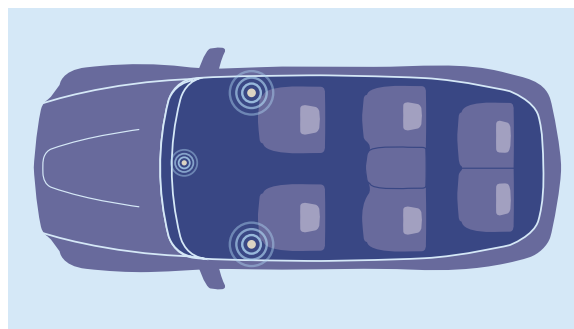
### Passenger Talk

Prevents the driver from having to shout to rear seat passengers by using the driver's built-in microphone to "broadcast" through the vehicle's speakers to the rear seat.



### Quiet Mode

Accommodates sleeping rear passengers by shutting off the rear speakers and turning the front speakers down to volume 7.



## Power Hands-free Smart Liftgate w/ Auto Open<sup>15</sup>

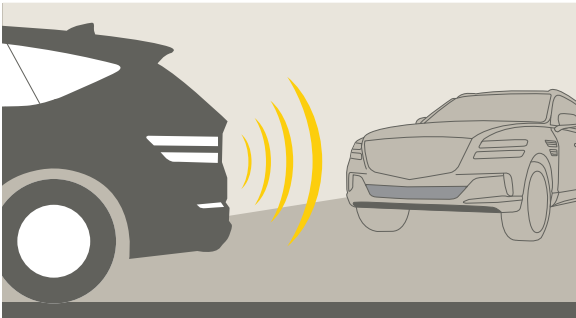
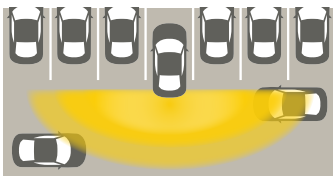
Opens the liftgate automatically when you stand within 3 feet behind the vehicle with the Proximity Key in your possession for more than 3 seconds. This is a convenient feature, especially when your hands are full.

- For "smart" liftgate function: all of the doors must be closed and locked for at least 15 seconds and the driver's Proximity Key must have left the sensor's range, at least momentarily (like going into a store)
- Upon returning to the sensor's range, at the rear of the vehicle, the hazard warning lights will blink and a chime will sound for about 3 seconds to alert you the Proximity Key has been detected and that the liftgate will unlatch and open



## Rear Cross-Traffic Collision-Avoidance Assist<sup>3</sup>

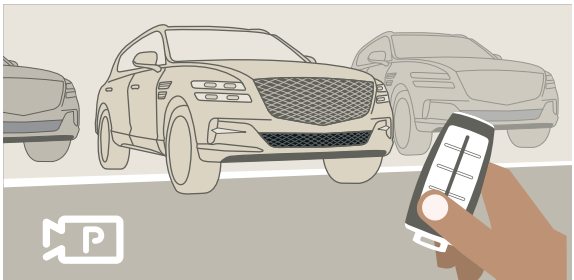
Alerts the driver to approaching vehicles when backing out of a parking space, with an audible alert and warning lights in the outside mirrors. If no action is taken, the brakes are then applied.




## Remote Smart Parking Assist<sup>18</sup>

(2.5T Prestige, 2.5T AWD Advanced, 2.5T AWD Prestige, 3.5T Advanced, 3.5T Advanced+, 3.5T Prestige)

Assists with vehicle parking and exit from both inside and outside the vehicle.



- Allows for remote parking in a variety of scenarios, such as straight-in, parallel and perpendicular parking
  - Driver activates Remote Smart Parking process by pressing the “RSPA” button  on center console
  - While driving slowly forward, the vehicle searches for a nearby, eligible parking spot, displaying the spot on the Surround View Monitor
  - When an eligible parking spot is identified, the driver is asked to select the appropriate Parking Type (straight-in, parallel, or 90-degree)
  - Driver can stay in the vehicle as it self-parks, by holding down the “RSPA” button to park or...
- For tight parking spaces—after designating the parking type from inside the vehicle, the driver can get out and complete the Remote Smart Parking from outside the vehicle
  - The driver presses and holds the “in” or “out” buttons on the smart key to move the vehicle into or out of a parking space

	Parking	Exit	Moving Forward/Moving Backward
Function			
Smart	✓	✓	-
Remote	✓	-	✓

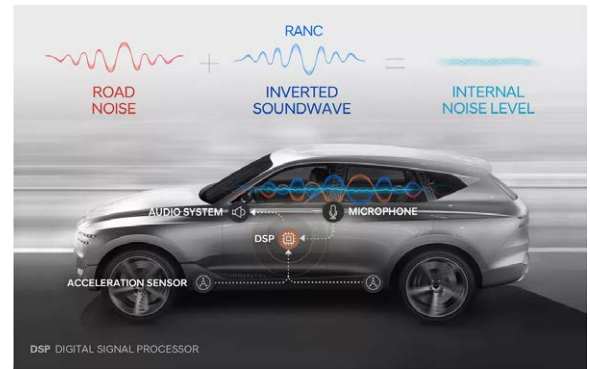
## Road Active Noise Cancellation

### (2.5T AWD Prestige, 3.5T Prestige)

Reduces road noise while driving caused by vibrations transmitted to the cabin via the suspension and body.

Based on the science of digital signal processing, it overcomes the limitations of existing noise control technologies that rely on physical technology, such as materials and structures, to quiet the cabin.

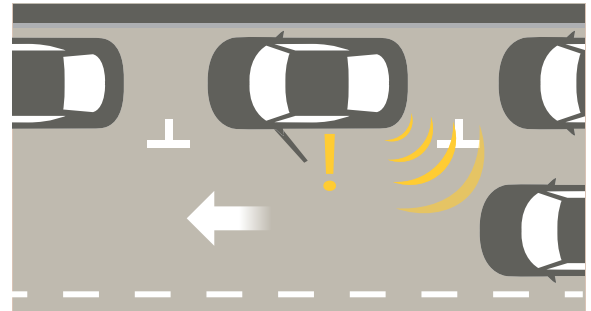
- Controller receives information from both accelerometers and microphones, and in 0.002 seconds analyzes this information to produce an inverted sound wave to counter noise
- Each rear seat receives a dedicated signal tailored to what the vehicle's interior mics at each position detect
- System responds to the unique acoustic signature of each tire, even as the signature changes over the tire's life



## Safe Exit Assist w/ Power Child Lock<sup>6</sup>

Warns passengers exiting the car of other vehicles approaching from the rear (does not prevent the door from being opened). If an approaching vehicle is detected, the driver is alerted with an audible warning and a visual warning in the instrument cluster.

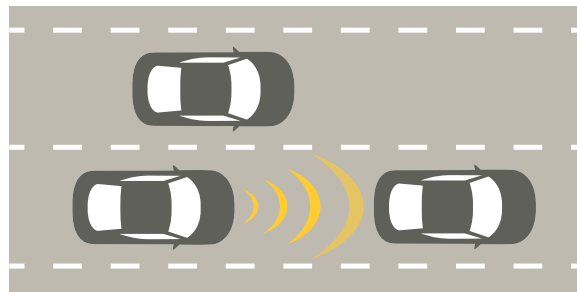
If a passing threat is detected, Safe Exit Assist can override the driver's release of the Power Child Door Locks (controls on driver's door armrest).



## Smart Cruise Control with Machine Learning<sup>1</sup>

Uses the front radar sensor. The system operates like a conventional cruise control on an open road to maintain a set speed. When traffic slows ahead, Smart Cruise Control's radar senses the distance to vehicle in front, automatically applies the brakes and gently slows the vehicle to maintain a desired distance between GV80 and the vehicle ahead—even at a full stop. If the vehicle ahead stops and resumes in less than 3 seconds, the system will automatically resume with the selected distance. If the delay is longer, the driver must manually resume driving.

- Machine Learning tailors and controls Smart Cruise Control operation based on driver behavior for acceleration responsiveness and following distance

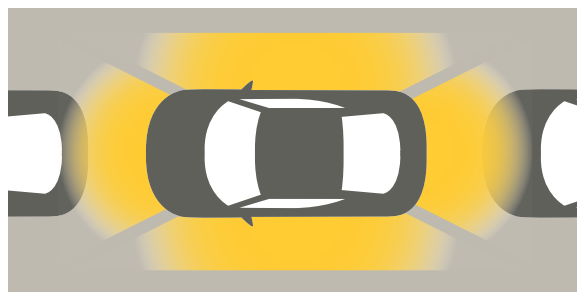


## Surround View Monitor<sup>10</sup>

**(2.5T Prestige, 2.5T AWD Advanced, 2.5T AWD Prestige, 3.5T Advanced, 3.5T Advanced+, 3.5T Prestige)**

Offers multiple viewing angles by providing a “bird’s-eye” 360-degree visual around the entire vehicle. Four cameras are mounted around the vehicle:

- Front view camera
- Camera under each side mirror (2)
- Rearview camera



### New Features

- Includes 3D View that can be rotated to allow users to see the vehicle's surroundings
- Remote Image Capture allows users to remotely check vehicle surroundings via the Genesis Connected Services App





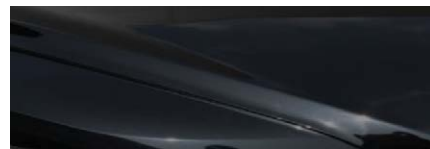
## EXTERIOR COLORS



Uyuni White (Pearl)



Alta White (Solid)



Vik Black



Cardiff Green (Pearl)



Adriatic Blue



Lima Red (Pearl)



Himalayan Gray



Savile Silver



Gold Coast Silver

## INTERIOR COLORS



Black/Black  
Glossy Black Trim - NNB  
Olive Ash - NP7



Black/Beige  
Glossy Black Trim - VNB  
Metallic Porefiller - VP8



Urban Ground/Beige  
Olive Ash - UT2



Ultramarine Blue/Dune  
Olive Ash - DV2



Maroon Brown/Smoky Green  
Olive Ash - RH3

# 2021 GV80 COMPETITIVE ADVANTAGES

Shaded = Genesis Competitive Advantage	2021 Genesis GV80 2.5T	2020 BMW X5 sDrive40i xLine	2020 Mercedes-Benz GLE 350	2020 Lexus RX 350	2020 Audi Q7 45 quattro® Premium
Engine Type (liters)	2.5L Turbo GDI + MPI DOHC 4-cyl.	3.0L Turbo DI DOHC 6-cyl.	2.0L Turbo DI DOHC 4-cyl.	3.5L EFI + D4S DOHC V6	2.0L Turbo TFSI DOHC 4-cyl.
Horsepower (hp @ rpm) – Premium Fuel	300 @ 5,800	335 @ 5,500	255 @ 5,800	295 @ 6,300	248 @ 6,000
Standard Automatic Transmission	8-speed Automatic w/ rotary dial selector and paddle shifters	8-speed Automatic w/ sport and manual shift modes and paddle shifters	9-speed Automatic 9G-Tronic w/ paddle shifters	8-speed Automatic	8-speed Tiptronic®
All-Wheel Drive	0	0 – xDrive	0 – 4MATIC	0	S
Drive Modes	S – Comfort, Smart, Eco, Sport, Custom	S – Comfort, Eco Pro, Sport	S – Eco, Comfort, Sport, Individual	S – Eco, Normal, Sport, Custom	S – Offroad, Allroad, Comfort, Auto, Dynamic
Power Hands-free Smart Liftgate <sup>15</sup>	S	S (N/A – Hands-free)	S (Foot-activated)	0 (Foot activated)	S (N/A – Hands-free)
Forward Collision-Avoidance Assist w/ Pedestrian Detection, Lane-Change Oncoming, Junction Turning, Junction Crossing, Lane-Change Side and Evasive Steering Torque Assist <sup>6</sup>	S	S (N/A – LCO, JT, JC, LCS) (0 – ESA)	S (N/A – LCO, JT, LCS) (0 – JC, ESA)	S (N/A – LCO, JT, JC, LCS, ESA)	S (N/A – LCO, JT, JC, LCS, ESA)
Blind-Spot Collision-Avoidance Assist <sup>9</sup> w/ Rear Cross-Traffic Collision-Avoidance Assist <sup>3</sup>	S	S	S	0	0
Smart Cruise Control w/ Machine Learning <sup>1</sup>	S	S—N/A Machine Learning	0—N/A Machine Learning	S—N/A Machine Learning	N/A
Highway Driving Assist <sup>7</sup>	S	0	0	S	N/A
Telematics	S – Genesis Connected Services	S – BMW Connected Drive®	S – Mercedes me	S – Enform Connect Services	S – Audi Connect®
Navigation System	S (14.5-inch)	S (12.3-inch)	S (12.3-inch)	0 (12.3-inch)	S (10.1-inch)
City / Highway / Combined (EPA-estimated mpg*)	21/25/23 (RWD) 21/25/22 (AWD)	21/26/23 (RWD) 20/26/22 (AWD)	20/27/22 (RWD) 19/26/22 (AWD)	20/27/23 (FWD) 19/26/22 (AWD)	19/25/21 (AWD)
MSRP**	\$48,900 (RWD) \$54,650 (AWD)	\$58,900 (RWD) \$61,200 (AWD)	\$54,250 (RWD) \$56,750 (AWD)	\$44,150 (RWD) \$45,550 (AWD)	\$54,800 (AWD)

S = Standard 0 = Factory Option/Option package A = Dealer-Installed Accessory N/A = Not available <sup>1</sup> with Premium fuel <sup>2</sup> with Regular fuel

\*Fuel economy estimated by EPA for comparison only. Your actual mileage may vary with options, driving conditions, driving habits and the vehicle's condition.

\*\*MSRP does not include destination charges. Tax, title, and license fees extra. Actual dealer price may vary.

# 2021 GV80 COMPETITIVE ADVANTAGES

<b>Shaded</b> = Genesis Competitive Advantage	<b>2021 Genesis GV80 3.5T Advanced</b>	<b>2020 BMW X5 xDrive40i xLine Executive</b>	<b>2020 Mercedes-Benz GLE 450 4MATIC AMG Line</b>	<b>2020 Audi Q7 55 quattro® Prestige</b>
Engine Type (liters)	3.5L Twin Turbo GDI + MPI DOHC V6	3.0L Turbo DI DOHC 6-cyl.	3.0L Turbo DI DOHC 6-cyl. AMG Line	3.0L Turbo DI DOHC V6
Horsepower (hp @ rpm) – Premium Fuel	375 @ 5,800	335 @ 5,500	362 @ 5,500	335 @ 6,000
Standard Automatic Transmission	8-speed Automatic w/ rotary dial selector and paddle shifters	8-speed Automatic w/ sport and manual shift modes and paddle shifters	9-speed Automatic 9G-Tronic w/ paddle shifters	8-speed Tiptronic®
All-Wheel Drive	S	S	S	S
Electronically Controlled Suspension w/ Road Preview	S	S (N/A – Road Preview)	S (0 – Road Preview)	S (N/A – Road Preview)
Surround View Monitor <sup>10</sup>	S	S	0	S
Blind-Spot View Monitor <sup>2</sup>	S	N/A	N/A	N/A
Parking Collision–Avoidance Assist - Rear <sup>4</sup>	S	N/A	N/A	S
Remote Smart Parking Assist <sup>18</sup>	S	S (parallel or perpendicular park while inside the vehicle)	S (parallel or perpendicular park while inside the vehicle)	N/A
Lexicon® Quantum Logic® Surround Sound Audio System w/ 21 Speakers	S	0 (Bowers & Wilkins® Diamond Surround w/ 20 Speakers)	0 (Burmester® High-End 3D Surround w/ 25 Speakers)	0 (Bang & Olufsen® 3D Advanced w/ 23 Speakers)
Heads-up Display	S	S	0	S
Ergo Motion Driver's Seat	S	N/A	N/A	N/A
3-Zone Automatic Temperature Control	S	S (4-zone)	0 (4-zone)	S (4-zone)
City/Highway/Combined (EPA-estimated mpg*)	18/23/20 (AWD)	20/26/22 (AWD)	19/24/21 (AWD)	17/21/18 (AWD)
MSRP**	\$64,350 (AWD)	\$66,800 (AWD)	\$65,000 (AWD)	\$71,200 (AWD)

S = Standard 0 = Factory Option/Option package A = Dealer-Installed Accessory N/A = Not available <sup>1</sup> with Premium fuel <sup>2</sup> with Regular fuel

\*Fuel economy estimated by EPA for comparison only. Your actual mileage may vary with options, driving conditions, driving habits and the vehicle's condition.

\*\*MSRP does not include destination charges. Tax, title, and license fees extra. Actual dealer price may vary.

# FEATURE-BY-FEATURE DISCLAIMERS

1. **Smart Cruise Control with machine learning (SCC)** is not a collision avoidance or warning device. SCC is for highway use only and should not be used in poor weather, heavy or varying traffic, or on winding or slippery roads. Driver remains responsible to slow or stop the vehicle to avoid a collision. See Owner's Manual for details and limitations.
2. The **Blind-Spot View Monitor (BVM)** assists the driver in changing lanes by providing a live view of the blind spots on either side of the vehicle and an audible alert if another vehicle is detected. Turn signal must be activated, and other system limitations apply. Do not rely exclusively on BVM. It is the driver's responsibility to be aware of the surroundings and ensure it is clear before changing lanes or directions. See Owner's Manual for details and limitations.
3. **Rear Cross-Traffic Collision-Avoidance Assist (RCCA)** is designed to notify drivers of approaching cross traffic behind their vehicle. When another vehicle is detected while you are backing out of a parking spot, it provides audible and visual display warnings and applies braking if it senses a collision is imminent. RCCA is active when the vehicle is in reverse gear and backing at a speed less than 6 mph. It only engages during the first activation of reverse gear from park and may not detect all vehicles, depending on the size, angle, distance and speed of the other vehicle. Never rely exclusively on RCCA. Always look over your shoulder and use your mirrors to confirm rear clearance. There are limitations to the function, detection, range and clarity of the system. See Owner's Manual for details and limitations.
4. **Parking Collision Avoidance Assist (PCCA)** helps drivers back out of a parking space by detecting traffic coming from either side of the vehicle. It can alert the driver of a potential hazard, and, if deemed necessary, can activate braking. PCCA is active when the vehicle is in reverse gear and operating at low speeds. Never rely exclusively on PCCA when exiting a parking space, it is not a substitute for attentive driving. Always look over your shoulder and use your mirrors to confirm rear clearance. There are limitations to the function, detection, range and clarity of the system. PCCA may not function correctly if one or more of the parking sensors is damaged, dirty or covered or if weather conditions (heavy rain, snow or fog) are interfering with the sensor operation. See Owner's Manual for further details and limitations.
5. **Parking Exit Assist (PEA)** helps prevent collisions when exiting parallel parking spots. It can alert the driver of a potential hazard. Never rely exclusively on PEA when exiting a parking space, it is not a substitute for attentive driving. Always look over your shoulder and use your mirrors to confirm clearance. There are limitations to the function, detection, range and clarity of the system. PEA may not function correctly if one or more of the parking sensors is damaged, dirty or covered or if weather conditions (heavy rain, snow or fog) are interfering with the sensor operation. See Owner's Manual for further details and limitations.
6. When your vehicle is parked, **Safe Exit Assist (SEA)** can alert occupants planning to exit when a vehicle is approaching from behind. When Child Locks are active, SEA helps prevent the rear doors from opening if a vehicle approaching from behind is detected. SEA is not a substitute for attentive driving. See Owner's Manual for details and limitations.
7. **Highway Driving Assist II (HDA)** is for highway use only and helps keep your vehicle centered in its lane while maintaining a safe distance from the vehicle ahead. Lane markings must be clearly visible on the road. HDA should not be used in poor weather, heavy or varying traffic, or on winding or slippery roads. HDA will not work under all circumstances and will not prevent loss of control. Driver remains responsible to slow or stop the vehicle to avoid a collision. See Owner's Manual for details and limitations.
8. **Forward Collision-Avoidance Assist (FCA) w/ Pedestrian & Cyclist Detection** helps detect pedestrians and cyclists, but not in all conditions. FCA is designed to assist drivers to avoid, or reduce the severity of, collisions with cars that have slowed or stopped in front of them. The system is not designed to detect certain stationary objects such as trees or poles, and may not detect all vehicles, pedestrians and cyclists under certain road, weather and vehicle conditions. It is a supplemental assist and does not replace the need for extreme care and attention by the driver. FCA may not stop the vehicle completely and will not avoid all collisions. The driver is responsible for being attentive and maintaining control of the vehicle and should not wait for the system's alerts before braking as there may not be sufficient time to brake safely. See Owner's Manual for further details and limitations.

These are conditions referenced in the Owner's Manual where the system may not detect a pedestrian or cyclist:

- The pedestrian or cyclist is not fully captured by the camera sensor, or the pedestrian does not walk in the upright position
- The pedestrian or cyclist moves very fast
- The pedestrian or cyclist abruptly appears in front
- The pedestrian or cyclist wears clothes in the color similar to the background
- The outside is too bright or too dark

- The vehicle drives at night or in the darkness
- There is an item similar to a person's body structure
- The pedestrian or cyclist is small
- The pedestrian has impaired mobility
- It is difficult to distinguish the pedestrian or cyclist from the surroundings
- The sensor recognition is limited
- There is a group of pedestrians or cyclists

**Lane-Change Oncoming** helps the driver avoid collisions involving drifting into an oncoming traffic lane by applying the opposing front brake only when the lane markings are clearly visible on the road. There are limitations to the function, detection, range and clarity of the system. Lane-Change Oncoming may not function correctly if one or more of the parking sensors is damaged, dirty or covered or if weather conditions (heavy rain, snow or fog) are interfering with the sensor operation. It will not prevent loss of control. This driver assistance system is not a substitute for safe driving. See Owner's Manual for further details and limitations.

**Junction Turning** helps the driver avoid collisions involving turning left at an intersection by applying the opposing front brake only when an oncoming vehicle is detected in the opposing lane. There are limitations to the function, detection, range and clarity of the system. Junction Turning may not function correctly if one or more of the sensors is damaged, dirty or covered or if weather conditions (heavy rain, snow or fog) are interfering with the sensor operation. It will not prevent loss of control. This driver assistance system is not a substitute for safe driving. See Owner's Manual for further details and limitations.

**Junction Crossing** helps the driver avoid collisions involving crossing an intersection by applying the opposing front brake only when an oncoming vehicles are detected to be crossing the vehicle's path from the left or right. There are limitations to the function, detection, range and clarity of the system. Junction Crossing may not function correctly if one or more of the sensors is damaged, dirty or covered or if weather conditions (heavy rain, snow or fog) are interfering with the sensor operation. It will not prevent loss of control. This driver assistance system is not a substitute for safe driving. See Owner's Manual for further details and limitations.

**Lane-Change Side** helps the driver avoid collisions involving merging into another lane by applying the opposing front brake only when the lane markings are clearly visible on the road. There are limitations to the function, detection, range and clarity of the system. Lane-Change Side may not function correctly if one or more of the parking sensors is damaged, dirty or covered or if weather conditions (heavy rain, snow or fog) are interfering with the sensor operation. It will not prevent loss of control. This driver assistance system is not a substitute for safe driving. See Owner's Manual for further details and limitations.

**Evasive Steering Torque Assist (ESA)** can help the driver avoid cyclists or other pedestrians in a traffic lane when there is room within the lane and there are no vehicles in the adjacent traffic lane. There are limitations to the function, detection, range and clarity of the system. ESA may not function correctly if one or more of the parking sensors is damaged, dirty or covered or if weather conditions (heavy rain, snow or fog) are interfering with the sensor operation. Always drive carefully and use extreme caution when cyclists and other pedestrians are present. See Owner's Manual for further details and limitations.

9. **Blind-Spot Collision-Avoidance Assist (BCA)** warns the driver of other cars in the blind spot region. If BCA detects an unsafe lane change being attempted, it applies braking on the opposite side of the attempted lane change to help avoid a collision. There are limitations to the function, range, detection and clarity of the system. It will not detect all vehicles or objects in the blind spot and may not operate if sensors are obscured in any way. Do not rely exclusively on BCA. BCA is a supplemental system, and it is the driver's responsibility to exercise caution when changing lanes. Refer to your Owner's Manual for details.
10. **Surround View Camera System (SVCS)** is a parking support system. SVCS cannot completely eliminate blind spots, may not detect every object and does not warn of moving objects. Always check your surroundings before moving your vehicle. See Owner's Manual for further details. Remote image capture requires active Genesis Connected Services account.
12. **Driver Attention Warning** is only a warning to inform the driver of a potential lack of driver attention or drowsiness. It does not detect and provide an alert in every situation. It is the driver's responsibility to remain alert at all times. See Owner's Manual for details and limitations.
13. **Forward Attention Warning (FAW)** helps monitor the driver's eye position using an infrared camera and provides an audible warning if it detects a potential lack of driver attention. It does not detect and provide an alert in every situation. It is the driver's responsibility to remain alert at all times. See Owner's Manual for details and limitations.



## FEATURE-BY-FEATURE DISCLAIMERS

14. **Valet Mode** helps the driver to protect their personal information by limiting head unit access when your vehicle is not in your possession and allows for remote monitoring of the vehicle while it is in the valet's care. Valet Mode requires active subscription to Genesis Connected Services and wireless connection. See Owner's Manual for further details and limitations.
15. The **smart liftgate** will open when your Proximity Key is within 40 inches of the detection area for at least 3 seconds. Radio transmitters and other vehicle smart keys may interfere with the normal operation of this feature. See Owner's Manual for further details and limitations. Always close your liftgate before operating vehicle.
16. **Near Field Communication (NFC)** smartphone Digital Key requires a compatible Android smartphone and an appropriately equipped 2021 G80 vehicle. Not all Android devices are compatible. The Genesis G80 must be equipped with smart key with push button start, wireless device charging, and Audio Video Navigation System 5.0 (or newer) or Display Audio 2.0. Lock/unlock functionality works on driver's door only. Features and specifications subject to change. See your Owner's Manual or visit your local Hyundai dealer for details and limitations.
17. **Connected Routing** helps the driver access the latest traffic and road conditions. Connected Routing requires active subscription to Genesis Connected Services and wireless connection. See Owner's Manual for further details and limitations.
18. **Remote Smart Parking Assist (RSPA)** can remotely help park the vehicle. However, several factors can impact RSPA performance. RSPA may not function correctly if one or more of the parking sensors is damaged, dirty or covered or if weather conditions (heavy rain, snow or fog) interfere with sensor operation. Always inspect the parking area with your own eyes.  
See Owner's Manual for details and limitations.
19. **Lane Following Assist (LFA)**, when actively engaged with Smart Cruise Control or Highway Drive Assist, can help keep the vehicle centered in its lane only when the lane markings are clearly visible on the road. Lane Following Assist will not work under all circumstances and will not prevent loss of control. Lane Following Assist is a supplemental assist and does not replace the need for extreme care and attention by the driver. See Owner's Manual for further details and limitations.
20. **Lane Keeping Assist (LKA)** will not work under all circumstances. It functions when it is able to detect painted lane markings. It cannot function if the lane markings cannot be seen clearly, if the lines are faded, or during dusk without headlights on, with snow, rain, sleet, dust, leaves or standing water on road, sudden changes in brightness such as shadows, tunnel exits/entrances, low sunlight angle causing reflections, multiple lane markings or criss-crossed lines, tar crack sealer and cracked or broken road surfaces. It also may not function on very rough roads, when walls, curbs or concrete barriers are close by, or if following another car too closely. Since it "sees" the lane markings using a camera in the upper windshield area, it is imperative this area be clear and free of blockage such as stickers, dirt, snow, tinting material, markings and labels. Avoid putting objects on the dashboard that may reflect light or images onto the system camera area. Lane Keeping Assist is not a substitute for safe driving practices, but is a supplemental assist only. The driver is responsible for always maintaining command and control of the vehicle and must keep hands on the wheel at all times. See Owner's Manual for further details and limitations.
21. When the vehicle is parked and the engine has been turned off, the **Rear Occupant Alert** can help to alert the driver if the rear door(s) have been opened at any point after the vehicle was unlocked at the beginning of the journey. Upon turning the engine off, Rear Occupant Alert will provide a visual alert on the instrument cluster. Rear Occupant Alert is not a substitute for driver attentiveness. Never leave a child unattended in a vehicle. See Owner's Manual for further details and limitations.
22. **Airbags: The Supplemental Restraint System (SRS)** is designed to work with the three-point seatbelt system. The SRS deploys in certain frontal and/or side-impact conditions where significant injury is likely. The SRS is not a substitute for seatbelts, which should be worn at all times. Children under the age of 13 should be restrained securely in the rear seat. NEVER place a rear-facing child seat in the front seat of a vehicle that has a passenger-side airbag.



## GENESIS RESOURCE LIST

Bluetooth Phone Pairing and Compatibility Website [www.GenesisBluetooth.com](http://www.GenesisBluetooth.com)

Customer Website [www.Genesis.com](http://www.Genesis.com)

Genesis on YouTube [GenesisUSA](https://www.youtube.com/GenesisUSA)