

**ROYAL**  
Honda

**\$3000 Rebates**

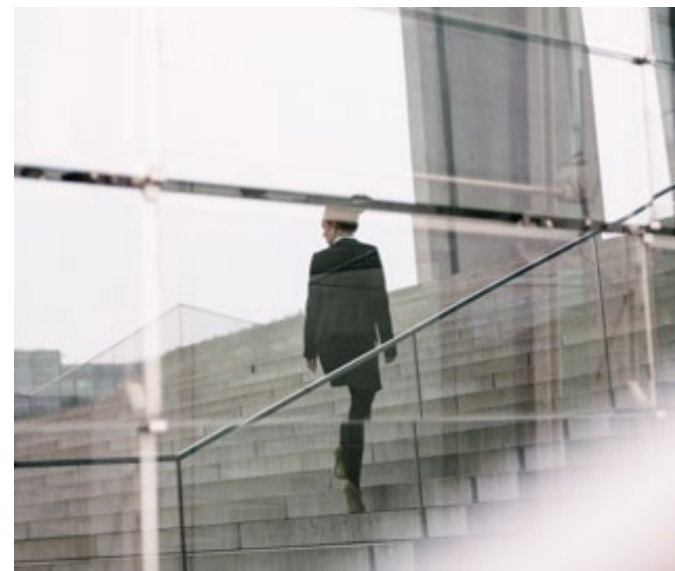
**On 2018 Civic Models**



**2018 Civic Lineup**

We have a limited time rebate in the amount of \$2500 on 2018 Honda Civics. This is a very good deal on an amazing car but it won't last. Please call us at 1-877-261-6559 to book an appointment for a test drive or feel free to simply stop by our location. We look forward to meeting you.

Natalie Ortynsky



[royalhonda.ca](http://royalhonda.ca)





**A winning sports team.  
A great novel. The human  
body. All around us is  
proof: the whole is greater  
than the sum of its parts.  
That's Civic Nation.  
This is the Civic Collection.**



Overview 01  
Sedan 03  
Coupe 05  
Sedan & Coupe Accessories 07  
Hatchback 09  
Hatchback Accessories 11  
Performance 13  
Si 15  
Type R 17

Si & Type R Performance & Efficiency 19  
Si Accessories 21  
Type R Accessories 22  
Technology 23  
Honda Sensing™ Technologies 25  
Safety 27  
The Power of Dreams 29  
Warranty 31  
Specifications 32  
Colours & Trims 41





## Welcome to Civic Nation. Population: 2,000,000.

Two million Civics sold and they just keep getting better. Since 1998, the Civic has been Canada's best-selling car and it's no wonder. The stunning exterior and impressive performance of the 2018 Civic solidify its exciting evolution. Its progressive look is perfectly complemented by a sophisticated interior designed with both comfort and safety in mind. Here's to the next two million.



### SPORTY DESIGN

With its aggressive stance, sleek lines and long wheelbase, the 2018 Civic boasts a distinctly sporty design.





## Make headway. Your way.

Turns out, looks can get you everywhere. With an aggressive stance and sporty, sleek lines, the Civic Sedan looks great from every angle. Up front, LED daytime running lights and available LED headlights give it a distinctive presence that lets everyone know you're coming. When you're in it, you'll sit pretty on its available fashionable 17" aluminum-alloy wheels. If you want a fresh view, lower the windows, tap a button and open up the available power moonroof with tilt feature. Plus, available fog lights up front and available mirror-integrated LED turn signal indicators help you stand out on the road. So be proud. Confidence looks good on you.

### Key Features

Standard LED daytime running lights and available LED headlights

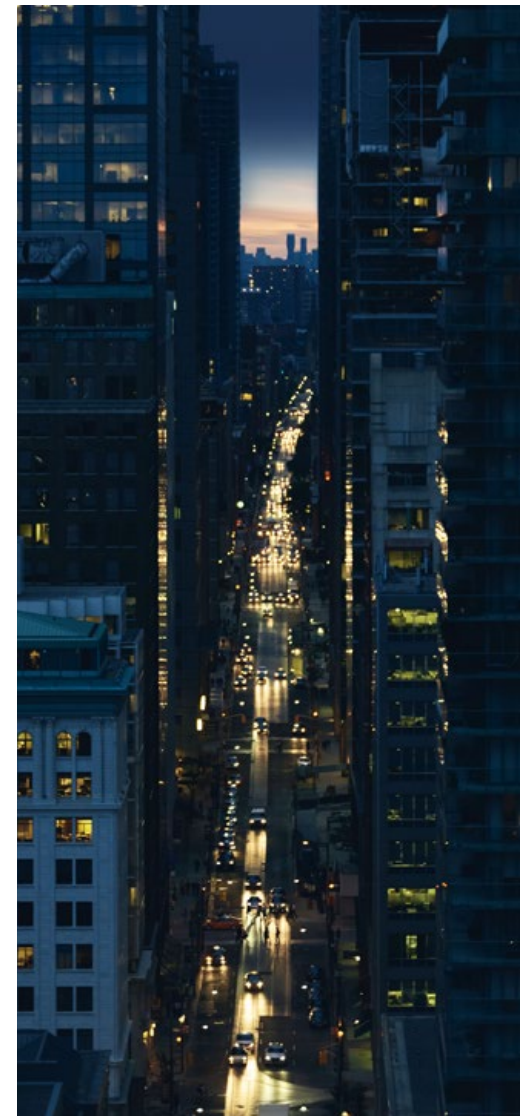
Available 17" aluminum-alloy wheels

Available deck lid spoiler





Hit the road.  
Harder.



 AVAILABLE LEATHER-TRIMMED SEATING SURFACES

The Coupe boasts impressive exterior styling that is bound to make you do a double take. With a low-slung, aggressive stance and sleek, clean lines, the Coupe stands out from the crowd wherever it goes. Below its tough-looking shell sit standard 16" aluminum-alloy wheels. And to satisfy your edgier side, 17" aluminum-alloy wheels are available as well. Around the back, you'll catch yourself admiring the view thanks to the signature LED taillights and taillight-integrated rear spoiler. If you think the Civic Coupe looks like fun, just wait until you get behind the wheel.

**Key Features**

Standard LED daytime running lights and available LED headlights

Available 17" aluminum-alloy wheels

Available fog lights and mirror-integrated LED turn signal indicators

Available one-touch power moonroof with tilt feature



# Embrace every detail.



DOOR VISORS



ILLUMINATED CONSOLE (BLUE)



TRUNK TRAY



REAR WING SPOILER

CIVIC SEDAN



CIVIC COUPE



FOG LIGHTS



AMBIENT LIGHTING (BLUE)



ALL-SEASON FLOOR MATS (HIGH WALL)



LOWER DOOR GARNISH



REAR SPLASH GUARDS



## Other Accessories Available

- Body side molding
- Cargo net
- Engine block heater
- Trunk edge and bumper protector
- Wireless charger attachment

Accessories and packages are subject to inventory availability.





## Hatch into more.

With a sporty design and innovative silhouette, the Civic Hatchback is guaranteed to get attention on the road and in your driveway. Its aggressive stance is boldly complemented by a distinctive body-coloured rear roofline spoiler and an available dual centre exhaust with chrome finisher. The available 18" aluminum-alloy wheels and the available stylish skirt package will catch eyes and turn heads. Plus, with the available LED headlights and a standard multi-angle rearview camera,<sup>1</sup> you can keep a close watch on your surroundings. Step into the Civic Hatchback and you'll surely stand out.

### Key Features

- Body-coloured rear roofline spoiler
- Available 18" aluminum-alloy wheels with dark finish
- Available dual centre exhaust with chrome finisher
- Available LED headlights

1. None of the features we describe are intended to replace the driver's responsibility to exercise due care while driving. Drivers should not use handheld devices or operate certain vehicle features unless it is safe and legal to do so. Some features have technological limitations. For additional feature information, limitations and restrictions, please visit [www.honda.ca/disclaimers](http://www.honda.ca/disclaimers) and refer to the vehicle's Owner's Manual.



### CARGO CONVENIENCE

The 2018 Civic Hatchback not only boasts seating for five and abundant cargo space, but the configurable 60/40 split fold-down rear seatback gives you the room and freedom to pack – and do – virtually anything.





# Five doors. Countless accessories.



WIRELESS CHARGER



TAILGATE SPOILER



ILLUMINATED CONSOLE (BLUE OR RED)



BODY SIDE MOLDING



REMOTE ENGINE STARTER



17" ALLOY WHEEL



AMBIENT LIGHTING (BLUE)



TRUNK TRAY



DRILLED BRAKE DISK ROTOR, FRONT AND REAR



### Other Accessories Available

- Full nosemask
- Fog lights
- Hood edge deflector
- Moonroof visor
- Rear bumper appliqué

Accessories and packages are subject to inventory availability.





#### TURBO ENGINE

Make every drive a joyride with the turbocharged engine option, available on all 2018 Civic models.



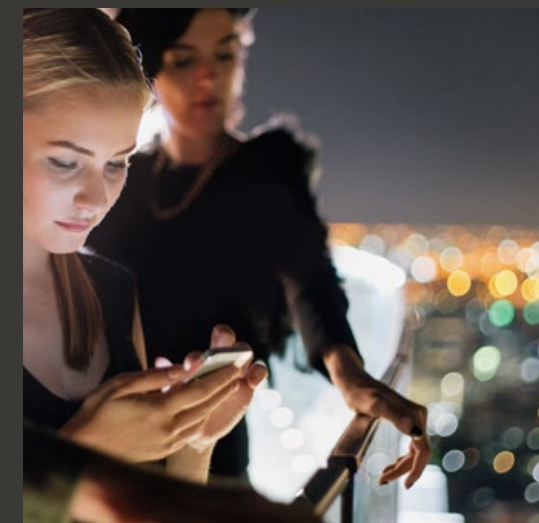
## It's time to get in gear.

Whether it's a long drive, a short haul, an open road or rush hour traffic, you'll look forward to powering through it all with the Civic. The 1.5-litre turbocharged direct-injected 4-cylinder engine is available on every Civic model. The 2.0-litre, 16-valve, DOHC, i-VTEC® engine is standard on the Sedan and Coupe. If you're the type who loves control, you'll love the standard 6-speed manual transmission (MT) on the Sedan (DX and LX), Hatchback and Coupe (LX and EX-T). If you just want to pop it in drive and go, the available continuously variable transmission (CVT) is everything you need. But if you're feeling eager, the available steering wheel-mounted paddle shifters make driving the Hatchback a truly hands-on experience. Plus, thanks to Eco Assist™ with ECON mode, the Civic is designed to help keep you on the road longer, and away from gas stations.





**Sport meets speed.**



 SPORT Si FRONT SEATS WITH RED STITCHING

The Civic Si sports sharp looks to match its fierce personality. A bold, gloss black front grille, rear wing spoiler, 18" aluminum-alloy wheels and centre exhaust finisher put raceway style onto your driveway. Light up the road with attractive LED daytime running lights, LED headlights with auto-on/off and LED taillights. Or let in some extra light with the one-touch power moonroof with tilt function.

- Key Features**
- 18" aluminum-alloy wheels
  - 6-speed manual transmission (MT)
  - Apple CarPlay™<sup>1,2</sup>/Android Auto™<sup>1,2</sup>
  - Heated front seats
  - Honda LaneWatch™ blind spot display<sup>1</sup>
  - One-touch power moonroof with tilt feature
  - Rear wing spoiler and centre exhaust finisher
  - Sport mode button

1. None of the features we describe are intended to replace the driver's responsibility to exercise due care while driving. Drivers should not use handheld devices or operate certain vehicle features unless it is safe and legal to do so. Some features have technological limitations. For additional feature information, limitations and restrictions, please visit [www.honda.ca/disclaimers](http://www.honda.ca/disclaimers) and refer to the vehicle's Owner's Manual.  
2. Only compatible with certain devices and operating systems. Operation may be dependent upon: 1. connection to vehicle's built-in Wi-Fi hotspot, or 2. GPS satellite signal reception and available cellular data and/or voice connection; associated charges (incl. data plans, roaming charges and/or other amounts charged by your wireless carrier) may apply.





6-SPEED MANUAL TRANSMISSION (MT) WITH REV-MATCH CONTROL

## Buckle up. Pedal down.

For Honda, racing has always been the pinnacle of automotive art. Hence the Civic Type R: an eye-catching car for the road that just happens to hold the record lap time for a front-wheel drive car on the world-famous Nürburgring\*. From the striking red suede-effect fabric front sport seats, to the bold rear wing spoiler, to the red-accented piano black 20" aluminum-alloy wheels, there's no hiding the racing pedigree of the Type R.

### Key Features

- 20" aluminum-alloy wheels in piano black with red accents
- Aluminum hood with air intake
- Aluminum-trimmed sport pedals
- Rear wing spoiler
- Red-suede fabric front sport seat
- Skirt package
- Type R badging and unique serial number plate



\*Based on information available to Honda Canada Inc. as of October 23, 2017.





**TRIPLE CENTRE EXHAUST (TYPE R)**

The triple centre exhaust captures the spirit of the racetrack and controls the exhaust tone, while the chrome finishing proves that raw power doesn't have to come at the cost of refinement.

## Clutch performance.

The Civic Si commands respect and delivers outstanding performance on any street. With a 205-horsepower,<sup>1</sup> 1.5-litre, 16-valve, Direct Injection, DOHC, turbocharged 4-cylinder engine with 192 lb-ft of torque,<sup>1</sup> just strap in and let your right foot do all the talking.

Then there's the Civic Type R: the definition of uncompromising performance. Powered by a direct-injected 2.0-litre VTEC<sup>®</sup> turbocharged 4-cylinder engine with 306-horsepower and 295 lb-ft of torque,<sup>1</sup> the only thing that matches its powerful looks is what's under the hood.

**Type R Key Features**

- 2.0-litre, 16-valve VTEC<sup>®</sup> turbocharged 4-cylinder engine, 306 horsepower,<sup>1</sup> 295 lb-ft of torque<sup>1</sup>
- 6-speed manual transmission with rev-match control
- 3-mode drive system
- Brembo<sup>®</sup> 4-piston aluminum front brake calipers
- Triple centre exhaust

1. Horsepower and torque calculations reflect SAE net, Rev. 08/04, SAE J1349 procedures.



# Find your apex.



DOOR VISORS



ILLUMINATED CONSOLE, TYPE R



AUTO DAY/NIGHT MIRROR



AMBIENT LIGHTING (RED)

CIVIC Si



CIVIC TYPE R



18" ALLOY WHEEL



ALL-SEASON FLOOR MATS



REAR SPLASH GUARDS



DOOR SILL TRIM, TYPE R



LOWER DOOR GARNISH



## Other Accessories Available

- Ashtray, cup-holder style
- Car cover
- Engine block heater
- Moonroof visor
- Rear seat cover

Accessories and packages are subject to inventory availability.





AVAILABLE 7" DISPLAY AUDIO SYSTEM<sup>1</sup>

## Beauty is nothing without brains.

The available state-of-the-art 7" Display Audio System<sup>1</sup> is technology worthy of applause. Intuitive and easy to use, the 7" touch-screen works just like a tablet. Just swipe, pinch and tap to navigate through the audio system, display settings and advanced features. Pair the Display Audio System with the available Apple CarPlay™<sup>1,2</sup> or Android Auto™<sup>1,2</sup> to seamlessly connect your compatible smartphone and access some of your apps to make staying in touch with family and friends more convenient and your drive more entertaining. The Civic also keeps your phone juiced, letting you drop any compatible smartphone into the available wireless charging pad.

With the 2018 Civic, hindsight is right in front of you. When you're in reverse, the multi-angle rearview camera<sup>1</sup> shows what's going on behind you. It's engineered to give you a clear line of sight from three different angles: wide, normal and top-down.

Keep more of your right side in sight with the available Honda LaneWatch™ blind spot display,<sup>1</sup> which sends a live video feed to the 7" Display Audio System screen, revealing nearly four times more visibility than the side mirror alone. When you're on the road, the available Honda Satellite-Linked Navigation System™<sup>1,3</sup> with bilingual Voice Recognition helps plan your route with ease. It's like asking someone for directions who actually knows where they're going.

### Key Features

Available Honda LaneWatch™ blind spot display<sup>1</sup>

Available Apple CarPlay™<sup>1,2</sup>/  
Android Auto™<sup>1,2</sup>

Available 7" Display Audio System<sup>1</sup>

Available wireless charging

Available Honda Satellite-Linked  
Navigation System™<sup>1,3</sup> with  
bilingual Voice Recognition

Multi-angle rearview camera<sup>1</sup>



AVAILABLE HONDA LANEWATCH™ BLIND SPOT DISPLAY<sup>1</sup>



AVAILABLE APPLE CARPLAY™<sup>1,2</sup>/ ANDROID AUTO™<sup>1,2</sup>



AVAILABLE 7" DISPLAY AUDIO SYSTEM<sup>1</sup>



AVAILABLE WIRELESS CHARGING



AVAILABLE HONDA SATELLITE-LINKED NAVIGATION SYSTEM™<sup>1,3</sup>  
WITH BILINGUAL VOICE RECOGNITION



MULTI-ANGLE REARVIEW CAMERA<sup>1</sup>

1. None of the features we describe are intended to replace the driver's responsibility to exercise due care while driving. Drivers should not use handheld devices or operate certain vehicle features unless it is safe and legal to do so. Some features have technological limitations. For additional feature information, limitations and restrictions, please visit [www.honda.ca/disclaimers](http://www.honda.ca/disclaimers) and refer to the vehicle's Owner's Manual.

2. Only compatible with certain devices and operating systems. Operation may be dependent upon: 1. connection to vehicle's built-in Wi-Fi hotspot, or 2. GPS satellite signal reception and available cellular data and/or voice connection; associated charges (incl. data plans, roaming charges and/or other amounts charged by your wireless carrier) may apply.

3. Map database covers major metropolitan areas in Canada and the 48 contiguous U.S. states.



# See more than the road ahead.



## BRAKE

### FORWARD COLLISION WARNING (FCW) SYSTEM

The available FCW system<sup>1</sup> that is integrated with CMBS<sup>®</sup> is designed to detect the presence of vehicles in front of you and issue alerts if you're approaching with too much speed. If you fail to respond to the alerts, the CMBS<sup>®</sup> is triggered into operation.



### COLLISION MITIGATION BRAKING SYSTEM™ (CMBS®)

The Honda Sensing™ technologies are designed to help make your drive safer. With intuitive technology and design, we've created a way forward that we can all feel good about. Whether you're driving or sitting in the passenger seat, feel confident in the latest in safety innovation from Honda.

To help reduce the likelihood or severity of a frontal impact, the available CMBS<sup>®</sup> is engineered to apply the brakes pressure if you don't slow down when it senses you're at risk of a collision. If it still senses an imminent collision, CMBS<sup>®</sup> is designed to brake firmly.



### LANE DEPARTURE WARNING (LDW) SYSTEM

The available LDW system<sup>1</sup> is designed to monitor vehicle lane position and alert you if your vehicle drifts into a new lane when you haven't signaled.



### LANE KEEPING ASSIST SYSTEM (LKAS)

The available LKAS<sup>1</sup> is engineered to gently correct your steering if you begin to leave a detected lane without signaling, applying torque progressively to the steering to help guide you back to the centre of the lane.



### ROAD DEPARTURE MITIGATION (RDM) SYSTEM

The available RDM system<sup>1</sup> is designed to help steer and even apply the brakes to help keep the vehicle from leaving the road.



### ADAPTIVE CRUISE CONTROL (ACC) WITH LOW-SPEED FOLLOW†

The available ACC system<sup>1</sup> is designed to keep a set speed and set following interval behind the vehicle detected ahead of yours, including the ability to start and stop the vehicle with the flow of traffic.

<sup>1</sup> None of the features we describe are intended to replace the driver's responsibility to exercise due care while driving. Drivers should not use handheld devices or operate certain vehicle features unless it is safe and legal to do so. Some features have technological limitations. For additional feature information, limitations and restrictions, please visit [www.honda.ca/disclaimers](http://www.honda.ca/disclaimers) and refer to the vehicle's Owner's Manual.

† Low-Speed Follow is not applicable on MT trims with Honda Sensing™ safety and driver assist features.





**Solid on safety.**

At Honda, we strive to provide a high level of standard safety features to help ensure the safety of occupants, other drivers and even pedestrians. This added peace of mind helps our drivers maintain the confidence to enjoy every road to the fullest.

## Active safety

### Controlled Braking

To assist with safe stopping, the 4-wheel Anti-lock Braking System<sup>1</sup> (ABS) is designed to help you maintain control under hard braking conditions, while Electronic Brakeforce Distribution (EBD) helps to optimize braking power based on weight distribution inside the vehicle. In addition, Brake Assist is engineered to help improve braking performance by applying brake pressure when a panic stop is detected.

### Vehicle Stability Assist (VSA<sup>®</sup>) with Traction Control

Vehicle Stability Assist<sup>1</sup> with Traction Control is designed to sense and help correct oversteer and understeer scenarios to enhance handling and cornering stability, while Traction Control is designed to minimize wheel spin when accelerating on loose or slippery surfaces, helping to inspire greater driver confidence.

### Hill Start Assist<sup>1</sup>

If you take your foot off the brake when stopped on an incline, this feature is engineered to temporarily maintain brake pressure to help prevent your Civic from starting to roll backwards.

## Passive safety

### Seat belt safety

The Civic helps prepare you for the unexpected with 3-point height-adjustable (Sedan and Hatchback only) front seat belts with automatic tensioning system and 3-point rear seat belts.

### Child safety

The Civic features childproof rear door locks (Sedan and Hatchback only), as well as rear seat Lower Anchors and Tethers for Children (LATCH), which give you a simple and convenient method to install compatible child safety seats without using the vehicle's seat belt system.

### Pedestrian safety

Innovative pedestrian safety features include an energy-absorbing hood and front fenders and deformable wiper pivots.

### Advanced Compatibility Engineering™ (ACE™) body structure

The highly innovative, next-generation Advanced Compatibility Engineering™ (ACE™) body structure is engineered to help disperse frontal impact energy to enhance occupant protection, while more effectively controlling it in a severe collision, to help prevent intrusion into the passenger cabin.

### Six standard airbags

The cabin of the Civic contains six standard airbags. It features an i-SRS front airbag system as well as side curtain airbags with a rollover sensor designed to deploy them in the event of a rollover. Plus, it has SmartVent™ side airbags, which are designed to deploy safely in a manner that mitigates the risk of injury to out-of-position or smaller occupants.

### HondaLink™ Assist Automatic Emergency Response System

The available HondaLink Assist Automatic Emergency Response System<sup>1,2,3</sup> helps you get the help you need when you need it most. If the airbags deploy, your Display Audio System<sup>1</sup> is designed to automatically attempt to put you on a call with an operator who will forward your location to first responders if needed. It works with any compatible Bluetooth®-paired phone as long as it has reception, does not require a subscription and gives you added peace of mind while you're on the road.

1. None of the features we describe are intended to replace the driver's responsibility to exercise due care while driving. Drivers should not use handheld devices or operate certain vehicle features unless it is safe and legal to do so. Some features have technological limitations. For additional feature information, limitations and restrictions, please visit [www.honda.ca/disclaimers](http://www.honda.ca/disclaimers) and refer to the vehicle's Owner's Manual.

2. Only compatible with certain devices and operating systems. Operation may be dependent upon: 1. connection to vehicle's built-in Wi-Fi hotspot, or 2. GPS satellite signal reception and available cellular data and/or voice connection; associated charges (incl. data plans, roaming charges and/or other amounts charged by your wireless carrier) may apply.

3. Operation requires wireless mobile phone to be paired with the vehicle. Operation is dependent upon cellular data and/or voice connection availability and GPS satellite signal reception.





HondaJet



Motorcycles



Side By Side



ASIMO



Honda Campus



Marine



Power Equipment



ATVs



Blue Skies for Our Children

## The Power of Dreams, in all their forms.

At Honda, we're committed to being a leader in innovative thinking. It's part of everything we do, from the design of our vehicles to the way we work. We have a proud tradition of turning ideas into products and initiatives that help move and improve people's lives in every conceivable way. Today, our innovation manifests itself in many forms: our revolutionary Earth Dreams™ technology; the race-inspired performance of our motorcycles and automobiles; the world's most advanced humanoid robot, ASIMO; HondaJet, the fastest, highest flying and most fuel-efficient aircraft in its class; and the first full line of fuel-efficient, low-emission, 4-stroke outboard motors. We continually strive to do things others think can't be done, because true innovation comes from daring to dream.

Beyond dreaming up new products, Honda believes we have a responsibility to help preserve our planet. This belief is why we make significant efforts to help ensure preservation of the environment in virtually all of our company's activities. It's why our head office in Markham, Ontario was designed and built to be LEED® (Leadership in Energy and Environmental Design) Gold Certified. It's why our Alliston, Ontario plant is ISO 14001 certified. And it's why Honda, along with our associates and families, has helped plant more than 140,000 trees in Canada over the last 11 years.

As we move forward, we will continue to honour our responsibility and tradition of turning innovative ideas into products that help make our world a better place. That's what we do. That's The Power of Dreams.





**We're Here.** At Honda, assistance and support are always available. The team of trained technicians at your Honda dealership will help keep your vehicle in terrific shape. If you need more information or assistance relating to your warranty, call us at 1-888-9-HONDA-9. For all of the latest Honda information, including product specifications, pricing, photos and more, visit [honda.ca](http://honda.ca). It has everything you need to “design” your Honda and personalize it with items from a list of quality accessories.

**We're Ready to Help.** When you purchase a new Honda, you automatically receive Honda Plus Roadside Assistance. This service is available to you, or any authorized driver, 24 hours a day, 7 days a week, anywhere in Canada or the continental United States. Coverage is for 3 years over an unlimited distance and includes a 24-hour toll-free Honda Plus Roadside Assistance number, mechanical breakdown towing, emergency roadside service and many other helpful features. Ask your dealer for more information.

**Honda Plus Extended Warranty.** Experience added protection with Honda Plus coverage that is behind you for the road ahead. With available coverage options of up to 8 years/200,000 km, you can choose the one that best suits your needs. With a plan this wide-ranging, the only thing that's uncertain is where it will take you.

**Honda Financial Services.** Whether you buy or lease a Honda, Honda Financial Services can assist you with the process. Ask your dealer which lease or purchase plan best suits your needs.

**New Honda Vehicle Warranty.** The Honda warranty protection makes Power Train components a minor concern with the Honda 5-year/100,000-km No Nonsense Warranty. In addition to the Honda 5-year/100,000-km No Nonsense Warranty, you and your new Honda are protected by a Honda 3-year/60,000-km Distributor's Warranty as well as an additional series of warranties for such items as emission controls, body corrosion and more.

**Genuine Honda Accessories** give you the opportunity to fine-tune your new Honda just how you like it. Whether you want to turn up the style, the versatility or the exclusivity, every accessory is designed and built to adhere to the strictest Honda standards. See your dealer for full details.

**Genuine Honda Replacement Parts** are made to the same exacting standards as original Honda components and are guaranteed by the Genuine Honda Parts Warranty. Using Genuine Honda Parts will help to maintain the quality, reliability and performance of your vehicle.

**Always use seat belts and appropriate child seats. Children 12 and under are safest when properly restrained in a rear seat. Properly secure all items stored in cargo areas. Always read the vehicle owner's manual for detailed vehicle operation and feature information.**

Honda reserves the right to terminate or change any of the services and/or features listed in this brochure at any time, for any reason. Some features require registration. Certain features may transmit to Honda and/or other service providers a vehicle's location, operating conditions or other information that may be tied to the vehicle identification number (VIN) and can be combined to track a vehicle. For Honda's data use and Privacy Policies, see [www.honda.ca/privacy](http://www.honda.ca/privacy). Specifications, features, illustrations and equipment shown in this brochure are based upon the latest available information at the time of publication. Although descriptions are believed to be correct, accuracy cannot be guaranteed. Honda reserves the right to make changes at any time, without notice or obligation, in colours, specifications, accessories, materials, models and trim availability. Some vehicles may be shown with optional equipment. Some vehicles shown may be U.S. models. Canadian specifications may vary. For Android Auto™ data use and privacy policy, see Terms and Privacy Policy for Android Auto™ app or contact Google Inc. at [www.google.com](http://www.google.com). Android Auto is a trademark of Google Inc. For Apple CarPlay™ data use and privacy policy, see Terms and Privacy Policy for Apple CarPlay™ or contact Apple Inc. at [www.apple.com](http://www.apple.com). Apple CarPlay, Siri and iPhone are trademarks of Apple Inc., registered in the U.S. and other countries. Aha, the Aha logo, and the Aha trade dress are trademarks or registered trademarks of HARMAN International Industries, used by permission. Bluetooth is a registered trademark of SIG Inc. Blu-ray is a trademark of Blu-ray Disc Association. HomeLink and HandsFreeLink are registered trademarks or trademarks of Johnson Controls Technology. HD Radio™ is a proprietary trademark of iBiquity Digital Corp. HDMI is a registered trademark of HDMI Licensing LLC. Windows Media is a registered trademark of Microsoft Corporation. LEED® is a registered trademark of the U.S. Green Building Council, licensed to the Canada Green Building Council for use in Canada. © 2017 Sirius XM Canada Inc. "SiriusXM", the SiriusXM logo, channel names and logos are trademarks of SiriusXM Radio Inc. and are used under licence. Honda and all other marks used herein are trademarks or registered trademarks of Honda Motor Co., Ltd. Honda Canada Inc., 180 Honda Boulevard, Markham, ON, Canada L6C 0H9. 1-888-9-HONDA-9. [www.honda.ca](http://www.honda.ca).

## Sedan

ENGINE	DX	LX	EX	EX-T	TOURING	Si
2.0-litre, 16-valve, Port Injection, DOHC, i-VTEC® 4-cylinder	•	•	•			
1.5-litre, 16-valve, Direct Injection, DOHC, turbocharged 4-cylinder				•	•	•
Horsepower @ rpm¹	158 @ 6500	158 @ 6500	158 @ 6500	174 @ 6000	174 @ 6000	205 @ 5700 rpm
Torque (lb.-ft. @ rpm)¹	138 @ 4200	138 @ 4200	138 @ 4200	162 @ 1700-5500	162 @ 1700-5500	192 @ 2100-5000
Displacement (cc)	1996	1996	1996	1498	1498	1498
Emissions rating	Tier 3 Bin 125	Tier 3 Bin 125	Tier 3 Bin 125	Tier 3 Bin 125	Tier 3 Bin 125	Tier 3 Bin 125
Bore and stroke (mm)	86 x 85.9	86 x 85.9	86 x 85.9	73 x 89.5	73 x 89.5	73 x 89.5
Compression ratio	10.8:1	10.8:1	10.8:1	10.6:1	10.6:1	10.3:1
Drive-by-Wire Throttle System™	•	•	•	•	•	•
Eco Assist™ system	•	•	•	•	•	•
Recommended fuel	Regular	Regular	Regular	Regular	Regular	Premium

DRIVETRAIN	DX	LX	EX	EX-T	TOURING	Si
6-speed manual transmission (MT)	•	•				•
Continuously variable transmission (CVT)		Available	•	•	•	
ECON mode button	•	•	•	•	•	
Front-wheel drive	•	•	•	•	•	•
Helical limited slip differential						•
Sport mode button						•

CHASSIS	DX	LX	EX	EX-T	TOURING	Si
16" steel wheels with full covers	•	•				
16" aluminum-alloy wheels			•			
17" aluminum-alloy wheels					•	
17" aluminum-alloy wheels (aero design)				•		
18" aluminum-alloy wheels						•
Adaptive Damper System						•
Agile Handling Assist² (AHA)	•	•	•	•	•	•
All-season tires	P215/55 R16 93H	P215/55 R16 93H	P215/55 R16 93H	P215/50 R17 91H	P215/50 R17 91H	P235/40 R18 91W
Capless fueling system	•	•	•	•	•	•
Variable Ratio Electric Power-Assisted Rack-and-Pinion Steering (EPS)	•	•	•	•	•	•
Electronic Parking Brake (EPB) with automatic brake hold	•	•	•	•	•	•
Front and rear stabilizer bars	25.0/16.5	25.0/16.5	25.5/16.5	25.5/16.5	26.5/17.0	27.0/18.0
Independent strut front suspension	•	•	•	•	•	•
Independent multi-link rear suspension	•	•	•	•	•	•
Power-assisted, ventilated front disc/solid rear disc brakes	•	•	•	•	•	•
Straight Driving Assist	•	•	•	•	•	•
Temporary spare tire	T125/80 D16 97M	T125/80 D16 97M	T125/80 D16 97M	T125/80 D16 97M	T125/80 D16 97M	T125/70 R17 98M

ACTIVE SAFETY	DX	LX	EX	EX-T	TOURING	Si
4-wheel Anti-lock Braking System² (ABS)	•	•	•	•	•	•
Brake Assist	•	•	•	•	•	•
Electronic Brake-force Distribution (EBD)	•	•	•	•	•	•
Collision Mitigation Braking System™² (CMBS®) (HS*)			•	•	•	•
Forward Collision Warning (FCW) system² (HS*)			•	•	•	•
Hill Start Assist²	•	•	•	•	•	•
Lane Departure Warning (LDW) system² (HS*)			•	•	•	•
LED daytime running lights	•	•	•	•	•	•
Road Departure Mitigation (RDM) system² (HS*)			•	•	•	•
Vehicle Stability Assist² (VSA®) with Traction Control	•	•	•	•	•	•

HS\* = Feature is a component of the Honda Sensing™ suite of safety and driver assist features.

PASSIVE SAFETY	DX	LX	EX	EX-T	TOURING	Si
3-point seat belts with front automatic tensioning system	•	•	•	•	•	•
Next-Generation Advanced Compatibility Engineering™ (ACE™) body structure	•	•	•	•	•	•
Childproof rear door locks	•	•	•	•	•	•
i-SRS airbag system (front)	•	•	•	•	•	•
Side curtain airbags with rollover sensor system	•	•	•	•	•	•
SmartVent™ side airbags	•	•	•	•	•	•
Front height-adjustable seat belt anchors	•	•	•	•	•	•
HondaLink™ Assist Automatic Emergency Response System²-3,4		•	•	•	•	•
Lower Anchors and Tethers for Children (LATCH)	•	•	•	•	•	•

DRIVER ASSIST TECHNOLOGY	DX	LX	EX	EX-T	TOURING	Si
Adaptive Cruise Control (ACC)³ with Low-Speed Follow (HS*)			•	•	•	
Honda LaneWatch™ blind spot display²			•	•	•	•
Lane Keeping Assist System (LKAS)³ (HS*)			•	•	•	

HS\* = Feature is a component of the Honda Sensing™ suite of safety and driver assist features.



## Sedan

EXTERIOR	DX	LX	EX	EX-T	TOURING	Si
Body-coloured bumpers	•	•	•	•	•	•
Body-coloured door handles	•	•	•	•	Chrome	•
Centre exhaust finisher						•
Deck lid spoiler				•	•	
Rear wing spoiler						•
Fog lights				•	•	•
Folding door mirrors	•	•	•	•	•	•
Front splash guards		•	•	•	•	•
Heated power door mirrors	Black	Body-coloured	Body-coloured	Body-coloured	Body-coloured with chrome accent	Body-coloured
Intermittent windshield wipers	•	•				
LED front turn signal indicators					•	•
LED headlights (High and low beam)					With auto-on/off	With auto-on/off
LED taillights	•	•	•	•	•	•
Mirror-integrated LED turn signal indicators					•	
One-touch power moonroof with tilt feature			•	•	•	•
Projector-beam halogen headlights	With auto-off	With auto-on/off	With auto-on/off	With auto-on/off		
Rain-sensing windshield wipers					•	
Rear window defroster	•	•	•	•	•	•
Shark fin antenna					•	•
Speed-sensing, variable intermittent windshield wipers			•	•	•	•
COMFORT & CONVENIENCE	DX	LX	EX	EX-T	TOURING	Si
12-volt power outlet	1	1	1	1	1	1
7" colour TFT centre meter display with Driver Information Interface		•	•	•	•	•
Acoustic windshield		•	•	•	•	•
Aluminum-trimmed sport pedals						•
Auto-dimming rearview mirror					•	
Automatic climate control with air-filtration system	Without A/C	•	Dual-zone	Dual-zone	Dual-zone	Dual-zone
Cargo area light	•	•	•	•	•	•
Display Audio System <sup>2</sup> with Honda Satellite-Linked Navigation System™ <sup>2,5</sup> with bilingual Voice Recognition					•	•
Driver's and front passenger's vanity mirrors	•	•	Illuminated	Illuminated	Illuminated	•
Exterior temperature indicator	•	•	•	•	•	•
Front and rear door pockets	•	•	•	•	•	•
HandsFreeLink™-bilingual Bluetooth® wireless mobile phone interface <sup>2,3</sup>	•	•	•	•	•	•
Immobilizer theft-deterrent system	•	•	•	•	•	•
Maintenance Minder™ system	•	•	•	•	•	•
Map lights	•	•	•	•	•	•
Multi-angle rearview camera <sup>2</sup>	•	With dynamic guidelines	With dynamic guidelines	With dynamic guidelines	With dynamic guidelines	With dynamic guidelines
Multi-functional centre console storage	•	•	•	•	•	•
One-touch turn signals	•	•	•	•	•	•
Passenger-side seatback pocket			•	•	•	•
Power windows with auto-up/down driver's and passenger's window	•	•	•	•	•	•
Power door locks	•	•	•	•	•	•
Proximity key entry system with pushbutton start			•	•	•	•
Rear armrest with cupholders		•	•	•	•	•
Rear-seat heater ducts	•	•	•	•	•	•
Remote engine starter			•	•	•	
Remote entry system with electronic trunk release	•	•				
Security system	•	•	•	•	•	•
Steering wheel-mounted cruise control		•	•	•	•	•
Tilt and telescopic steering column	•	•	•	•	•	•
Walk-away door lock			•	•	•	•
Wireless charging					•	•
SEATING & TRIM	DX	LX	EX	EX-T	TOURING	Si
60/40 split fold-down rear seatback		•	•	•	•	•
Driver's seat with 6-way manual adjustment	•	•	•	•		•
Driver's seat with 8-way power adjustment					•	
Front passenger's seat with 4-way manual adjustment	•	•	•	•		•
Front passenger's seat with 4-way power adjustment					•	
Floor mats	•	•	•	•	•	•
Fold-down rear seatback	•					
Heated front seats		•	•	•	•	•
Heated rear seats					•	•
Leather-trimmed seating surfaces					•	•
Leather-wrapped steering wheel				•	•	•

## Sedan

ENTERTAINMENT	DX	LX	EX	EX-T	TOURING	Si
160-watt AM/FM audio system with MP3/Windows Media® Audio playback capability and 4 speakers	•					
180-watt AM/FM audio system with MP3/Windows Media® Audio playback capability and 8 speakers		•	•	•		
452-watt AM/FM Premium audio system with MP3/Windows Media® Audio playback capability and 10 speakers including subwoofer					•	•
Apple CarPlay™ <sup>2,3</sup> /Android Auto™ <sup>2,3</sup>		•	•	•	•	•
Bluetooth® Streaming Audio <sup>2,3</sup>	•	•	•	•	•	•
5-inch colour LCD display	•					
Display Audio System <sup>2</sup> with HondaLink™ <sup>2,3</sup>		•	•	•	Including Navigation <sup>2,5</sup>	Including Navigation <sup>2,5</sup>
HD Radio™ <sup>6</sup>					•	•
Illuminated steering wheel-mounted audio controls	•	•	•	•	•	•
Siri Eyes Free compatibility <sup>2,3</sup>	•	•	•	•	•	•
SiriusXM™ <sup>2,7</sup>					•	•
SMS text message <sup>2,3</sup> /E-mail function <sup>2,3</sup>		•	•	•	•	•
Speed-sensitive Volume Control (SVC)	•	•	•	•	•	•
USB device connector <sup>3</sup>	1	2	2	2	2	2
Wi-Fi tethering <sup>3</sup>		•	•	•	•	•
FUEL ECONOMY <sup>8</sup> (L/100 KM)	DX	LX	EX	EX-T	TOURING	Si
Continuously variable transmission (City/Hwy/Combined)		7.8/6.0/7.0	7.8/6.0/7.0	7.4/5.6/6.6	7.4/5.6/6.6	
Manual transmission (City/Hwy/Combined)	8.5/6.0/7.4	8.5/6.0/7.4				8.4/6.2/7.4
DIMENSIONS	DX	LX	EX	EX-T	TOURING	Si
Cargo volume (L)	428	428	428	428	416	379
Curb weight – MT/CVT (kg)	1247/NA	1257/1260	NA/1278	NA/1326	NA/1334	1341/NA
Fuel tank capacity (L)	46.9	46.9	46.9	46.9	46.9	46.9
Ground clearance – no-load/full-load (mm)	125/108	125/108	125/108	125/108	125/108	120/103
Headroom – front/rear (mm)	997/942	997/942	953/935	953/935	953/935	953/935
Height (mm)	1416	1416	1416	1416	1416	1411
Hip room – front/rear (mm)	1364/1201	1364/1201	1364/1201	1364/1201	1364/1201	1364/1201
Legroom – front/rear (mm)	1074/950	1074/950	1074/950	1074/950	1074/950	1074/950
Length (mm)	4631	4631	4631	4631	4631	4645
Passenger volume (L)	2769	2769	2690	2690	2690	2690
Shoulder room – front/rear (mm)	1447/1397	1447/1397	1446/1397	1446/1397	1446/1397	1446/1397
Track – front/rear (mm)	1547/1563	1547/1563	1547/1563	1547/1563	1547/1563	1537/1555
Turning radius (m) (curb-to-curb)	5.4	5.4	5.4	5.4	5.4	5.8
Wheelbase (mm)	2700	2700	2700	2700	2700	2700
Width – including mirrors/mirrors folded (mm)	2076/1878	2076/1878	2087/1878	2087/1878	2087/1878	2087/1878

1. Horsepower and torque calculations reflect SAE net, Rev. 08/04, SAE J1349 procedures.

2. None of the features we describe are intended to replace the driver's responsibility to exercise due care while driving. Drivers should not use handheld devices or operate certain vehicle features unless it is safe and legal to do so. Some features have technological limitations. For additional feature information, limitations and restrictions, please visit [www.honda.ca/disclaimers](http://www.honda.ca/disclaimers) and refer to the vehicle's Owner's Manual.

3. Only compatible with certain devices and operating systems. Operation may be dependent upon: 1. connection to vehicle's built-in Wi-Fi hotspot, or 2. GPS satellite signal reception and available cellular data and/or voice connection; associated charges (incl. data plans, roaming charges and/or other amounts charged by your wireless carrier) may apply.

4. Operation requires wireless mobile phone to be paired with the vehicle. Operation is dependent upon cellular data and/or voice connection availability and GPS satellite signal reception.

5. Map database covers major metropolitan areas in Canada and the 48 contiguous U.S. states.

6. Coverage varies by market.

7. Only available in certain areas. Includes a no-charge trial of three months.

8. Estimated fuel consumption based on Government of Canada's 5-cycle testing method. Your actual fuel consumption will vary based on driving habits and other factors – use for comparison only.

For more information on 5-cycle testing, visit <http://vehicles.nrcan.gc.ca>.



## Coupe

ENGINE	LX	EX-T	TOURING	Si
2.0-litre, 16-valve, Port Injection, DOHC, i-VTEC® 4-cylinder	•			
1.5-litre, 16-valve, Direct Injection, DOHC, turbocharged 4-cylinder		•	•	•
Horsepower @ rpm <sup>1</sup>	158 @ 6500	174 @ 5500 (6MT) 174 @ 6000 (CVT)	174 @ 6000	205 @ 5700 rpm
Torque (lb.-ft. @ rpm) <sup>1</sup>	138 @ 4200	167 @ 1800-5500 (6MT) 162 @ 1700-5500 (CVT)	162 @ 1700-5500	192 @ 2100-5000
Displacement (cc)	1996	1498	1498	1498
Emissions rating	Tier 3 Bin 125	Tier 3 Bin 125	Tier 3 Bin 125	Tier 3 Bin 125
Bore and stroke (mm)	86 x 85.9	73 x 89.5	73 x 89.5	73 x 89.5
Compression ratio	10.8:1	10.6:1	10.6:1	10.3:1
Drive-by-Wire Throttle System™	•	•	•	•
Eco Assist™ system	•	•	•	•
Recommended fuel	Regular	Regular	Regular	Premium

DRIVETRAIN	LX	EX-T	TOURING	Si
6-speed manual transmission (MT)	•	•		•
Continuously variable transmission (CVT)	Available	Available	•	
ECON mode button	•	•	•	
Front-wheel drive	•	•	•	•
Helical limited slip differential				•
Sport mode button				•
Steering wheel-mounted paddle shifters		CVT only	•	

CHASSIS	LX	EX-T	TOURING	Si
16" aluminum-alloy wheels	•			
17" aluminum-alloy wheels			•	
17" aluminum-alloy wheels (aero design)		•		
18" aluminum-alloy wheels				•
Adaptive Damper System				•
Agile Handling Assist <sup>2</sup> (AHA)	•	•	•	•
All-season tires	P215/55 R16 93H	P215/50 R17 91H	P215/50 R17 91H	P235/40 R18 91W
Capless fueling system	•	•	•	•
Variable Ratio Electric Power-Assisted Rack-and-Pinion Steering (EPS)	•	•	•	•
Electronic Parking Brake (EPB) with automatic brake hold	•	•	•	•
Front and rear stabilizer bars (mm)	25.0/16.0	25.5/16.0	25.5/16.0	27.0/18.0
Independent strut front suspension	•	•	•	•
Independent multi-link rear suspension	•	•	•	•
Power-assisted, ventilated front disc/solid rear disc brakes	•	•	•	•
Straight Driving Assist	•	•	•	•
Temporary spare tire	T125/80 D16 97M	T125/80 D16 97M	T125/80 D16 97M	T125/70 R17 98M

ACTIVE SAFETY	LX	EX-T	TOURING	Si
4-wheel Anti-lock Braking System <sup>2</sup> (ABS)	•	•	•	•
Brake Assist	•	•	•	•
Electronic Brake-force Distribution (EBD)	•	•	•	•
Collision Mitigation Braking System™ <sup>2</sup> (CMBS™) (HS*)	Honda Sensing™ model	Honda Sensing™ model	•	
Forward Collision Warning (FCW) system <sup>2</sup> (HS*)	Honda Sensing™ model	Honda Sensing™ model	•	
Hill Start Assist <sup>2</sup>	•	•	•	•
Lane Departure Warning (LDW) system <sup>2</sup> (HS*)	Honda Sensing™ model	Honda Sensing™ model	•	
LED daytime running lights	•	•	•	•
Road Departure Mitigation (RDM) system <sup>2</sup> (HS*)	Honda Sensing™ model	Honda Sensing™ model	•	
Vehicle Stability Assist <sup>2</sup> (VSA®) with Traction Control	•	•	•	•

HS\* = Feature is a component of the Honda Sensing™ suite of safety and driver assist features.

PASSIVE SAFETY	LX	EX-T	TOURING	Si
3-point seat belts with front automatic tensioning system	•	•	•	•
Next-Generation Advanced Compatibility Engineering™ (ACE™) body structure	•	•	•	•
i-SRS airbag system (front)	•	•	•	•
Side curtain airbags with rollover sensor system	•	•	•	•
SmartVent™ side airbags	•	•	•	•
HondaLink™ Assist Automatic Emergency Response System <sup>2,3,4</sup>	•	•	•	•
Lower Anchors and Tethers for Children (LATCH)	•	•	•	•

DRIVER ASSIST TECHNOLOGY	LX	EX-T	TOURING	Si
Adaptive Cruise Control (ACC) <sup>3</sup> with Low-Speed Follow (HS*)	Honda Sensing™ model	Honda Sensing™ model	•	
Honda LaneWatch™ blind spot display <sup>2</sup>		•	•	•
Lane Keeping Assist System (LKAS) <sup>3</sup> (HS*)	Honda Sensing™ model	Honda Sensing™ model	•	

HS\* = Feature is a component of the Honda Sensing™ suite of safety and driver assist features.

## Coupe

EXTERIOR	LX	EX-T	TOURING	Si
Body-coloured bumpers	•	•	•	•
Body-coloured door handles	•	•	Chrome	•
Centre exhaust finisher				•
Fog lights		•	•	•
Folding door mirrors	•	•	•	•
Front splash guards	•	•	•	•
Heated power door mirrors	Body-coloured	Body-coloured	Body-coloured with chrome accent	Body-coloured

Intermittent windshield wipers	•			
LED front turn signal indicators			•	•
LED headlights (High and low beam)			With auto-on/off	With auto-on/off
LED taillights	•	•	•	•
Mirror-integrated LED turn signal indicators			•	
One-touch power moonroof with tilt feature		•	•	•
Projector-beam halogen headlights	With auto-on/off	With auto-on/off		
Rain-sensing windshield wipers			•	
Rear window defroster	•	•	•	•
Rear wing spoiler				•
Shark fin antenna			•	•
Speed-sensing, variable intermittent windshield wipers		•	•	•
Taillight-integrated rear spoiler	•	•	•	•

COMFORT & CONVENIENCE	LX	EX-T	TOURING	Si
12-volt power outlet	1	1	1	1
7" colour TFT centre meter display with Driver Information Interface	•	•	•	•
Acoustic windshield	•	•	•	•
Aluminum-trimmed sport pedals				•
Auto-dimming rearview mirror			•	
Automatic climate control with air-filtration system	•	Dual-zone	Dual-zone	Dual-zone
Cargo area light	•	•	•	•
Display Audio System <sup>2</sup> with Honda Satellite-Linked Navigation System™ <sup>2,5</sup> with bilingual Voice Recognition			•	•
Door pockets	•	•	•	•
Driver's and front passenger's vanity mirrors	•	Illuminated	Illuminated	•
Exterior temperature indicator	•	•	•	•
HandsFreeLink™-bilingual Bluetooth® wireless mobile phone interface <sup>2,3</sup>	•	•	•	•
Immobilizer theft-deterrent system	•	•	•	•
Maintenance Minder™ system	•	•	•	•
Map lights	•	•	•	•
Multi-angle rearview camera <sup>2</sup> with dynamic guidelines	•	•	•	•
Multi-functional centre console storage	•	•	•	•
One-touch turn signals	•	•	•	•
Power windows with auto-up/down driver's and passenger's window	•	•	•	•
Power door locks	•	•	•	•
Proximity key entry system with pushbutton start		•	•	•
Remote engine starter		CVT only	•	
Remote entry system with electronic trunk release	•			
Security system	•	•	•	•
Steering wheel-mounted cruise control	•	•	•	•
Tilt and telescopic steering column	•	•	•	•
Walk-away door lock		•	•	•
Wireless charging			•	•

SEATING & TRIM	LX	EX-T	TOURING	Si
60/40 split fold-down rear seatback	•	•	•	•
Driver's seat with 6-way manual adjustment	•	•	•	•
Front passenger's seat with 4-way manual adjustment	•	•	•	•
Floor mats	•	•	•	•
Heated front seats	•	•	•	•
Leather-trimmed seating surfaces			•	
Leather-wrapped steering wheel		•	•	•

ENTERTAINMENT	LX	EX-T	TOURING	Si
180-watt AM/FM audio system with MP3/Windows Media® Audio playback capability and 8 speakers	•	•		
452-watt AM/FM Premium audio system with MP3/Windows Media® Audio playback capability and 10 speakers including subwoofer			•	•
Apple CarPlay™ <sup>2,3</sup> /Android Auto™ <sup>2,3</sup>	•	•	•	•
Bluetooth® Streaming Audio <sup>2,3</sup>	•	•	•	•
Display Audio System <sup>2</sup> with HondaLink™ <sup>2,3</sup>	•	•	Including Navigation <sup>2,5</sup>	Including Navigation <sup>2,5</sup>
HD Radio™ <sup>6</sup>			•	•
Illuminated steering wheel-mounted audio controls	•	•	•	•
Siri Eyes Free compatibility <sup>2,3</sup>	•	•	•	•
SiriusXM™ <sup>2,7</sup>			•	•
SMS text message <sup>2,3</sup> /E-mail function <sup>2,3</sup>	•	•	•	•
Speed-sensitive Volume Control (SVC)	•	•	•	•
USB device connector <sup>3</sup>	2	2	2	2
Wi-Fi tethering <sup>3</sup>	•	•	•	•



## Coupe

FUEL ECONOMY <sup>8</sup> (L/100 KM)	LX	EX-T	TOURING	Si
Continuously variable transmission (City/Hwy/Combined)	7.8/6.0/7.0	7.5/5.9/6.8	7.5/5.9/6.8	
Manual transmission (City/Hwy/Combined)	8.5/6.1/7.4	7.7/5.7/6.8		8.4/6.2/7.4
DIMENSIONS	LX	EX-T	TOURING	Si
Cargo volume (L)	343	343	337	289
Curb weight – MT/CVT (kg)	1251/1257	1287/1313	NA/1317	1330/NA
Fuel tank capacity (L)	46.9	46.9	46.9	46.9
Ground clearance – no-load/full-load (mm)	125/105	125/105	125/105	120/103
Headroom – front/rear (mm)	970/879	928/876	928/876	928/876
Height (mm)	1395	1395	1395	1390
Hip room – front/rear (mm)	1374/1223	1374/1223	1374/1223	1374/1223
Legroom – front/rear (mm)	1074/912	1074/912	1074/912	1074/912
Length (mm)	4492	4492	4492	4505
Passenger volume (L)	2577	2509	2509	2509
Shoulder room – front/rear (mm)	1446/1336	1446/1336	1446/1336	1446/1336
Track – front/rear (mm)	1547/1563	1547/1563	1547/1563	1537/1555
Turning radius (m) (curb-to-curb)	5.4	5.4	5.4	5.8
Wheelbase (mm)	2700	2700	2700	2700
Width – including mirrors/mirrors folded (mm)	2076/1878	2087/1878	2087/1878	2087/1878

## Hatchback

ENGINE	LX	SPORT	SPORT TOURING	TYPE R
1.5-litre, 16-valve, Direct Injection, DOHC, turbocharged 4-cylinder	•	•	•	
2.0-litre, 16-valve, Direct Injection, DOHC, VTEC <sup>®</sup> , turbocharged 4-cylinder				•
Horsepower @ rpm <sup>1</sup>	174 @ 5500 (MT)/ 174 @ 6000 (CVT)	180 @ 5500 (MT)/ 180 @ 6000 (CVT)	180 @ 5500 (MT)/ 180 @ 6000 (CVT)	306 @ 6500
Torque (lb.-ft. @ rpm) <sup>1</sup>	167 @ 1800-5500 (MT)/ 162 @ 1700-5500 (CVT)	177 @ 1900-5000 (MT)/ 162 @ 1700-5500 (CVT)	177 @ 1900-5000 (MT)/ 162 @ 1700-5500 (CVT)	295 @ 2500-4500
Displacement (cc)	1498	1498	1498	1996
Emissions rating	Tier 3 Bin 125	Tier 3 Bin 125	Tier 3 Bin 125	Tier 3 Bin 125
Bore and stroke (mm)	73 x 89.5	73 x 89.5	73 x 89.5	86 x 85.9
Compression ratio	10.6:1	10.6:1	10.6:1	9.8:1
Drive-by-Wire Throttle System <sup>™</sup>	•	•	•	•
Eco Assist <sup>™</sup> system	•	•	•	
Recommended fuel	Regular	Premium	Premium	Premium

DRIVETRAIN	LX	SPORT	SPORT TOURING	TYPE R
6-speed manual transmission (MT)	•	•	•	
6-speed manual transmission (MT) with rev-match control				•
Continuously variable transmission (CVT)	Available	Available	Available	
ECON mode button	•	•	•	
3-mode drive system (Comfort/Sport/+R)				•
Front-wheel drive	•	•	•	•
Helical limited slip differential				•
Steering wheel-mounted paddle shifters		CVT model	CVT model	

CHASSIS	LX	SPORT	SPORT TOURING	TYPE R
16" aluminum-alloy wheels (aero design)	•			
18" aluminum-alloy wheels (dark)		•	•	
20" aluminum-alloy wheels (Piano Black with Red Styling line)				•
Adaptive Damper System				•
Agile Handling Assist <sup>2</sup> (AHA)	•	•	•	•
All-season tires	P215/55 R16 93H	P235/40 R18 91W	P235/40 R18 91W	
Sport performance tires				P245/30Z R20 90Y
Capless fueling system	•	•	•	•
Variable Ratio Electric Power-Assisted Rack-and-Pinion Steering (EPS)	•	•	•	•
Electronic Parking Brake (EPB) with automatic brake hold	•	•	•	•
Front and rear stabilizer bars (mm)	25.5/16.0	25.5/16.0	25.5/16.0	29/20.5
Independent strut front suspension	•	•	•	Dual-axis
Independent multi-link rear suspension	•	•	•	•
Power-assisted, ventilated front disc/solid rear disc brakes	•	•	•	
Power-assisted, ventilated and cross drilled front disc/solid rear disc brakes – front/rear (mm)	282/260	282/260	282/260	350/305
Brembo <sup>®</sup> 4-piston aluminum front brake calipers				•
Straight Driving Assist	•	•	•	
Temporary spare tire	T125/80 D16 97M	T125/70 D17 98M	T125/70 D17 98M	Tire Repair Kit (TRK)

ACTIVE SAFETY	LX	SPORT	SPORT TOURING	TYPE R
4-wheel Anti-lock Braking System <sup>2</sup> (ABS)	•	•	•	•
Auto high beam	Honda Sensing <sup>™</sup> trims only	Honda Sensing <sup>™</sup> trims only	•	
Brake Assist	•	•	•	•
Electronic Brake-force Distribution (EBD)	•	•	•	•
Collision Mitigation Braking System <sup>™2</sup> (CMBS <sup>®</sup> ) (HS <sup>*</sup> )	Available on CVT only	CVT only	•	
Forward Collision Warning (FCW) system <sup>2</sup> (HS <sup>*</sup> )	Available on CVT only	CVT only	•	
Hill Start Assist <sup>2</sup>	•	•	•	•
Lane Departure Warning (LDW) system <sup>2</sup> (HS <sup>*</sup> )	Available on CVT only	CVT only	•	
LED daytime running lights	•	•	•	•
Road Departure Mitigation (RDM) system <sup>2</sup> (HS <sup>*</sup> )	Available on CVT only	CVT only	•	
Vehicle Stability Assist <sup>2</sup> (VSA <sup>®</sup> ) with Traction Control	•	•	•	•

HS<sup>\*</sup> = Feature is a component of the Honda Sensing<sup>™</sup> suite of safety and driver assist features.

PASSIVE SAFETY	LX	SPORT	SPORT TOURING	TYPE R
3-point seat belts with front automatic tensioning system	•	•	•	•
Next-Generation Advanced Compatibility Engineering <sup>™</sup> (ACE <sup>™</sup> ) body structure	•	•	•	•
Childproof rear door locks	•	•	•	•
i-SRS airbag system (front)	•	•	•	•
Front height-adjustable seat belt anchors	•	•	•	•
Side curtain airbags with rollover sensor system	•	•	•	•
SmartVent <sup>™</sup> side airbags	•	•	•	•
HondaLink <sup>™</sup> Assist Automatic Emergency Response System <sup>2,3,4</sup>	•	•	•	•
Lower Anchors and Tethers for Children (LATCH)	•	•	•	•

DRIVER ASSIST TECHNOLOGY	LX	SPORT	SPORT TOURING	TYPE R
Adaptive Cruise Control (ACC) <sup>2</sup> with Low-Speed Follow (HS <sup>*</sup> )	Available on CVT only	CVT only	CVT only	
Adaptive Cruise Control (ACC) <sup>2</sup> (HS <sup>*</sup> )			MT only	
Honda LaneWatch <sup>™</sup> blind spot display <sup>2</sup>		•		•
Lane Keeping Assist System (LKAS) <sup>2</sup> (HS <sup>*</sup> )	Available on CVT only	CVT only	•	

HS<sup>\*</sup> = Feature is a component of the Honda Sensing<sup>™</sup> suite of safety and driver assist features.

<sup>1</sup> Horsepower and torque calculations reflect SAE net, Rev. 08/04, SAE J1349 procedures.

<sup>2</sup> None of the features we describe are intended to replace the driver's responsibility to exercise due care while driving. Drivers should not use handheld devices or operate certain vehicle features unless it is safe and legal to do so. Some features have technological limitations. For additional feature information, limitations and restrictions, please visit [www.honda.ca/disclosures](http://www.honda.ca/disclosures) and refer to the vehicle's Owner's Manual.

<sup>3</sup> Only compatible with certain devices and operating systems. Operation may be dependent upon: 1. connection to vehicle's built-in Wi-Fi hotspot, or 2. GPS satellite signal reception and available cellular data and/or voice connection; associated charges (incl. data plans, roaming charges and/or other amounts charged by your wireless carrier) may apply.

<sup>4</sup> Operation requires wireless mobile phone to be paired with the vehicle. Operation is dependent upon cellular data and/or voice connection availability and GPS satellite signal reception.

<sup>5</sup> Map database covers major metropolitan areas in Canada and the 48 contiguous U.S. states.

<sup>6</sup> Coverage varies by market.

<sup>7</sup> Only available in certain areas. Includes a no-charge trial of three months.

<sup>8</sup> Estimated fuel consumption based on Government of Canada's 5-cycle testing method. Your actual fuel consumption will vary based on driving habits and other factors – use for comparison only.

For more information on 5-cycle testing, visit <http://vehicles.nrcan.gc.ca>.



## Hatchback

EXTERIOR	LX	SPORT	SPORT TOURING	TYPE R
Aluminum hood with air intake				•
Body-coloured bumpers	•	•	•	•
Body-coloured door handles	•	•	•	•
Body-coloured rear roofline spoiler	•	•	•	
Body-coloured vortex generator				•
Dual centre exhaust with chrome finisher		•	•	
Triple centre exhaust with chrome finisher				•
Fog lights		•	•	LED
Folding door mirrors	•	•	•	•
Front splash guards	•			
Heated power door mirrors, body-coloured	•	•	•	•
Intermittent windshield wipers	•			
Intermittent rear window wiper/washer	•	•	•	•
LED front turn signal indicators			•	•
LED headlights (High and low beam)			With auto-on/off	With auto-on/off
LED taillights	•	•	•	•
Mirror-integrated LED turn signal indicators			•	•
Power moonroof with tilt feature		•	•	
Projector-beam halogen headlights	With auto-on/off	With auto-on/off		
Rain-sensing windshield wipers			•	
Rear window defroster	•	•	•	•
Rear wing spoiler				•
Red Honda "H" badges (front/rear)				•
Shark fin antenna	•	•	•	
Skirt package (front, side and rear)		•	•	Carbon fibre finish with red styling line
Speed-sensing, variable intermittent windshield wipers		•	•	•

COMFORT & CONVENIENCE	LX	SPORT	SPORT TOURING	TYPE R
12-volt power outlet	1	1	1	1
7" colour TFT centre meter display with Driver Information Interface	•	•	•	•
Acoustic windshield	•	•	•	•
Aluminum shift knob				•
Auto-dimming rearview mirror			•	
Automatic climate control with air-filtration system	•	Dual-zone	Dual-zone	Dual-zone
Cargo area light	•	•	•	•
Display Audio System <sup>2</sup> with Honda Satellite-Linked Navigation System™ <sup>2,5</sup> with bilingual Voice Recognition			•	•
Driver's and front passenger's vanity mirrors	•	Illuminated	Illuminated	Illuminated
Exterior temperature indicator	•	•	•	•
Front and rear door pockets	•	•	•	•
HandsFreeLink™-bilingual Bluetooth® wireless mobile phone interface <sup>2,3</sup>	•	•	•	•
Immobilizer theft-deterrent system	•	•	•	•
Maintenance Minder™ system	•	•	•	•
Map lights	•	•	•	•
Multi-angle rearview camera <sup>2</sup> with dynamic guidelines	•	•	•	•
Multi-functional centre console storage	•	•	•	•
One-touch turn signals	•	•	•	•
Passenger-side seatback pocket		•	•	
Power windows with auto-up/down driver's and passenger's window	•	•	•	•
Power door locks	•	•	•	•
Proximity key entry system with pushbutton start		•	•	•
Rear armrest with cupholders	•	•	•	
Rear-seat heater ducts	•	•	•	•
Remote engine starter		CVT only	CVT only	
Remote entry system with electronic trunk release	•			
Retractable cargo cover	•	•	•	•
Security system	•	•	•	•
Steering wheel-mounted cruise control	•	•	•	•
Textured aluminum pedals		•	•	•
Tilt and telescopic steering column	•	•	•	•
Type R serial number plate				•
Walk-away door lock		•	•	•
Wireless charging			•	•

## Hatchback

SEATING & TRIM	LX	SPORT	SPORT TOURING	TYPE R
Seating capacity	5	5	5	4
60/40 split fold-down rear seatback	•	•	•	•
Driver's seat with 6-way manual adjustment	•	•		Red suede-effect fabric sport seats with Type R logo
Driver's seat with 8-way power adjustment			•	
Front passenger's seat with 4-way manual adjustment	•	•		Red suede-effect fabric sport seats with Type R logo
Front passenger's seat with 4-way power adjustment			•	
Floor mats	•	•	•	Front mats with Type R logo
Heated front seats	•	•	•	
Heated rear seats			•	
Leather-trimmed seating surfaces			•	
Leather-wrapped steering wheel		•	•	Black/Red

ENTERTAINMENT	LX	SPORT	SPORT TOURING	TYPE R
180-watt AM/FM audio system with MP3/Windows Media® Audio playback capability and 8 speakers	•	•		
542-watt AM/FM Premium audio system with MP3/Windows Media® Audio playback capability and 12 speakers including subwoofer			•	•
Apple CarPlay™ <sup>2,3</sup> /Android Auto™ <sup>2,3</sup>	•	•	•	•
Bluetooth® Streaming Audio <sup>2,3</sup>	•	•	•	•
Display Audio System <sup>2</sup> with HondaLink™ <sup>2,3</sup>	•	•	Including Navigation <sup>2,5</sup>	Including Navigation <sup>2,5</sup>
HD Radio™ <sup>6</sup>			•	•
Illuminated steering wheel-mounted audio controls	•	•	•	•
Siri Eyes Free compatibility <sup>2,3</sup>	•	•	•	•
SiriusXM™ <sup>2,7</sup>			•	•
SMS text message <sup>2,3</sup> /E-mail function <sup>2,3</sup>	•	•	•	•
Speed-sensitive Volume Control (SVC)	•	•	•	•
USB device connector <sup>2</sup>	2	2	2	2
Wi-Fi tethering <sup>2</sup>	•	•	•	•

FUEL ECONOMY <sup>8</sup> (L/100 KM)	LX	SPORT	SPORT TOURING	TYPE R
Continuously variable transmission (City/Hwy/Combined)	7.7/6.0/6.9	7.9/6.6/7.3	7.9/6.6/7.3	
Manual transmission (City/Hwy/Combined)	8.0/6.2/7.2	8.0/6.2/7.2	8.0/6.2/7.2	10.6/8.3/9.6

DIMENSIONS	LX	SPORT	SPORT TOURING	TYPE R
Cargo volume – rear seats up/down <sup>9</sup> (L)	727.7/1308.2	727.7/1308.2	727.7/1308.2	727.7/1308.2
Curb weight – MT/CVT (kg)	1290/1321 1326 (Honda Sensing™ model )	1321/1351	1340/1370	1415/NA
Fuel tank capacity (L)	46.9	46.9	46.9	46.9
Ground clearance – no-load/full-load (mm)	133/109	128/109	128/109	132/109
Headroom – front/rear (mm)	998/950	954/949	954/949	998/951
Height (mm)	1434	1429	1429	1434
Hip room – front/rear (mm)	1364/1240	1364/1240	1364/1240	1364/1240
Legroom – front/rear (mm)	1074/916	1074/916	1074/916	1074/913
Length (mm)	4519	4519	4519	4557
Passenger volume (L)	2752	2684	2684	2747
Shoulder room – front/rear (mm)	1448/1398	1446/1398	1446/1398	1446/1398
Track – front/rear (mm)	1547/1563	1537/1553	1537/1553	1599/1593
Turning radius (m) (curb-to-curb)	5.4	5.7	5.7	6
Wheelbase (mm)	2700	2700	2700	2700
Width – including mirrors/mirrors folded (mm)	2076/1878	2087/1878	2087/1878	2087/1878

1. Horsepower and torque calculations reflect SAE net, Rev. 08/04, SAE J1349 procedures.

2. None of the features we describe are intended to replace the driver's responsibility to exercise due care while driving. Drivers should not use handheld devices or operate certain vehicle features unless it is safe and legal to do so. Some features have technological limitations. For additional feature information, limitations and restrictions, please visit [www.honda.ca/disclaimers](http://www.honda.ca/disclaimers) and refer to the vehicle's Owner's Manual.

3. Only compatible with certain devices and operating systems. Operation may be dependent upon: 1. connection to vehicle's built-in Wi-Fi hotspot, or 2. GPS satellite signal reception and available cellular data and/or voice connection; associated charges (incl. data plans, roaming charges and/or other amounts charged by your wireless carrier) may apply.

4. Operation requires wireless mobile phone to be paired with the vehicle. Operation is dependent upon cellular data and/or voice connection availability and GPS satellite signal reception.

5. Map database covers major metropolitan areas in Canada and the 48 contiguous U.S. states.

6. Coverage varies by market.

7. Only available in certain areas. Includes a no-charge trial of three months.

8. Estimated fuel consumption based on Government of Canada's 5-cycle testing method. Your actual fuel consumption will vary based on driving habits and other factors – use for comparison only. For more information on 5-cycle testing, visit <http://vehicles.nrcan.gc.ca>.

9. Based on SAE J1100 cargo volume measurement standard, plus rear footwell space and front seats moved forward.



# Sedan Trims

#### CIVIC DX SEDAN

KEY FEATURES:

- 158-hp<sup>1</sup>, 2.0-litre, 16-valve, Port Injection, DOHC, i-VTEC® 4-cylinder engine
- 12-volt power outlet
- 16" steel wheels with full covers
- 160-watt AM/FM audio system with MP3/Windows Media® Audio playback capability and 4 speakers
- 4-wheel Anti-lock Braking System<sup>2</sup> (ABS)
- 6-speed manual transmission (MT)
- Bluetooth® Streaming Audio<sup>2,3</sup>
- Body-coloured door handles
- Brake Assist
- Drive-by-Wire Throttle System™
- Driver's and front passenger's vanity mirrors
- Driver's seat with 6-way manual adjustment
- i-SRS airbag system (front)
- ECON mode button and Eco Assist™ system
- Electronic Brake-force Distribution (EBD)
- Exterior temperature indicator
- Fold-down rear seatback
- Folding side mirrors
- Front splash guards
- HandsFreeLink™-bilingual Bluetooth® wireless mobile phone interface<sup>2,3</sup>
- Heated power door mirrors
- Independent multi-link rear suspension
- Independent strut front suspension
- Lower Anchors and Tethers for Children (LATCH)
- Map lights
- Multi-angle rearview camera<sup>2</sup>
- Multi-functional centre console storage
- Next-Generation Advanced Compatibility Engineering™ (ACE™) body structure
- Power door locks
- Power windows with auto-up/down driver's and passenger's window
- Power-assisted, ventilated front disc/solid rear disc brakes
- Projector-beam halogen headlights with auto-off
- Remote entry system with electronic trunk release
- Security system
- Side curtain airbags with rollover sensor system
- Siri Eyes Free compatibility<sup>2,3</sup>
- SmartVent™ side airbags
- Tilt and telescopic steering column
- USB device connector<sup>2</sup>
- Variable Ratio Electric Power-Assisted Rack-and-Pinion Steering (EPS)
- Vehicle Stability Assist<sup>2</sup> (VSA™) with Traction Control

#### CIVIC LX SEDAN

ADDS TO OR REPLACES DX FEATURES:

- 7" colour TFT centre meter display with Driver Information Interface
- 180-watt AM/FM audio system with MP3/Windows Media® Audio playback capability and 8 speakers
- 60/40 split fold-down rear seatback
- Apple CarPlay™<sup>2,3</sup>/Android Auto™<sup>2,3</sup>
- Automatic climate control with air conditioning and air-filtration system
- Available continuously variable transmission (CVT)
- Body-coloured door mirrors
- Display Audio System<sup>2</sup> with HondaLink™<sup>2,3</sup>
- Heated front seats
- HondaLink™ Assist Automatic Emergency Response System<sup>2,3,4</sup>
- Illuminated steering wheel-mounted audio controls
- Mirror-integrated LED turn signal indicators
- Multi-angle rearview camera<sup>2</sup> with dynamic guidelines
- Projector-beam halogen headlights with auto-on/off
- Rear armrest with cupholders
- SMS text message<sup>2,3</sup>/E-mail function<sup>2,3</sup>
- Steering wheel-mounted cruise control
- USB device connector<sup>2</sup> (2)
- Wi-Fi tethering<sup>3</sup>

#### CIVIC EX SEDAN

ADDS TO OR REPLACES LX FEATURES:

- 16" aluminum-alloy wheels
- Continuously variable transmission (CVT)
- Dual-zone automatic climate control with air-filtration system
- Honda LaneWatch™ blind spot display<sup>2</sup>
- Illuminated driver's and front passenger's vanity mirrors
- Passenger-side seatback pocket
- One-touch power moonroof with tilt feature
- Proximity key entry system with pushbutton start
- Remote engine starter
- Speed-sensing, variable intermittent windshield wipers
- Honda Sensing™ Technologies

#### CIVIC EX-T SEDAN

ADDS TO OR REPLACES EX FEATURES:

- 174-hp<sup>1</sup>, 1.5-litre, 16-valve, Direct Injection, DOHC, turbocharged 4-cylinder engine
- 17" aluminum-alloy wheels (aero design)
- Deck lid spoiler
- Fog lights
- Leather-wrapped steering wheel

#### CIVIC TOURING SEDAN

ADDS TO OR REPLACES EX-T FEATURES:

- 17" aluminum-alloy wheels
- 452-watt AM/FM Premium audio system with MP3/Windows Media® Audio playback capability and 10 speakers including subwoofer
- Auto-dimming rearview mirror
- Chrome door handles
- Front passenger's seat with 4-way power adjustment
- Display Audio System<sup>2</sup> with Honda Satellite-Linked Navigation System™<sup>2,5</sup> with bilingual Voice Recognition
- Driver's seat with 8-way power adjustment
- HD Radio™<sup>6</sup>
- Heated rear seats
- Leather-trimmed seating surfaces
- LED headlights (high and low beam) with auto-on/off
- Mirror-integrated LED turn signal indicators
- Rain-sensing windshield wipers
- SiriusXM™<sup>2,7</sup>
- Wireless charging

#### CIVIC Si SEDAN

KEY FEATURES:

- 205-hp<sup>1</sup>, 1.5-litre, 16-valve, Direct Injection, DOHC, turbocharged 4-cylinder engine
- 18" aluminum-alloy wheels
- 452-watt AM/FM Premium audio system with MP3/Windows Media® Audio playback capability and 10 speakers including subwoofer
- 6-speed manual transmission (MT)
- Aluminum-trimmed sport pedals
- Apple CarPlay™<sup>2,3</sup>/Android Auto™<sup>2,3</sup>
- Centre exhaust finisher
- Display Audio System<sup>2</sup> with Honda Satellite-Linked Navigation System™<sup>2,5</sup> with bilingual Voice Recognition
- Fog lights
- Heated front seats
- Helical limited slip differential
- Leather-wrapped steering wheel
- LED headlights (high and low beam) with auto-on/off
- Rear wing spoiler
- SiriusXM™<sup>2,7</sup>
- Sport mode button
- Wireless charging

#### HONDA SENSING™ TECHNOLOGIES

STANDARD ON EX, EX-T AND TOURING

- Collision Mitigation Braking System™<sup>2</sup> (CMBS™)
- Forward Collision Warning (FCW) system<sup>2</sup>
- Lane Departure Warning (LDW) system<sup>2</sup>
- Road Departure Mitigation (RDM) system<sup>2</sup>
- Adaptive Cruise Control (ACC)<sup>2</sup> with Low-Speed Follow
- Lane Keeping Assist System (LKAS)<sup>2</sup>

# Coupe Trims

#### CIVIC LX COUPE

KEY FEATURES:

- 158-hp<sup>1</sup>, 2.0-litre, 16-valve, Port Injection, DOHC, i-VTEC® 4-cylinder engine
- 7" colour TFT centre meter display with Driver Information Interface
- 12-volt power outlet
- 16" aluminum-alloy wheels
- 60/40 split fold-down rear seatback
- 180-watt AM/FM audio system with MP3/Windows Media® Audio playback capability and 8 speakers
- 4-wheel Anti-lock Braking System<sup>2</sup> (ABS)
- 6-speed manual transmission (MT)
- Available continuously variable transmission (CVT)
- Apple CarPlay™<sup>2,3</sup>/Android Auto™<sup>2,3</sup>
- Automatic climate control with air-filtration system
- Bluetooth® Streaming Audio<sup>2,3</sup>
- Body-coloured door handles
- Body-coloured heated power door mirrors
- Brake Assist
- Display Audio System<sup>2</sup> with HondaLink™<sup>2,3</sup>
- Drive-by-Wire Throttle System™
- Driver's and front passenger's vanity mirrors
- Driver's seat with 6-way manual adjustment
- ECON mode button and Eco Assist™ system
- Electronic Brake-force Distribution (EBD)
- Exterior temperature indicator
- Folding door mirrors
- Front splash guards
- HandsFreeLink™-bilingual Bluetooth® wireless mobile phone interface<sup>2,3</sup>
- Heated front seats
- HondaLink™ Assist Automatic Emergency Response System<sup>2,3,4</sup>
- i-SRS airbag system (front)
- Illuminated steering wheel-mounted audio controls
- Independent multi-link rear suspension
- Independent strut front suspension
- Lower Anchors and Tethers for Children (LATCH)
- Map lights
- Multi-angle rearview camera<sup>2</sup> with dynamic guidelines
- Multi-functional centre console storage
- Next-Generation Advanced Compatibility Engineering™ (ACE™) body structure
- Power door locks
- Power windows with auto-up/down driver's and passenger's window
- Power-assisted, ventilated front disc/solid rear disc brakes
- Projector-beam halogen headlights with auto-on/off
- Remote entry system with electronic trunk release
- Security system
- Side curtain airbags with rollover sensor system
- Siri Eyes Free compatibility<sup>2,3</sup>
- SmartVent™ side airbags
- Tilt and telescopic steering column
- USB device connector<sup>2</sup> (2)
- Variable Ratio Electric Power-Assisted Rack-and-Pinion Steering (EPS)
- Vehicle Stability Assist<sup>2</sup> (VSA™) with Traction Control
- Wi-Fi tethering<sup>3</sup>
- Available Honda Sensing™ Technologies (CVT)

#### CIVIC EX-T COUPE

ADDS TO OR REPLACES LX FEATURES:

- 174-hp<sup>1</sup>, 1.5-litre, 16-valve, Direct Injection, DOHC, turbocharged 4-cylinder engine
- 17" aluminum-alloy wheels (aero design)
- 6-speed manual transmission (MT)
- Available continuously variable transmission (CVT)
- Dual-zone automatic climate control with air-filtration system
- Fog lights
- Honda LaneWatch™ blind spot display<sup>2</sup>
- Illuminated driver's and front passenger's vanity mirrors
- Leather-wrapped steering wheel
- Power moonroof with tilt feature
- Proximity key entry system with pushbutton start
- Remote engine starter (CVT only)
- Speed-sensing, variable intermittent windshield wipers
- Steering wheel-mounted paddle shifters (CVT only)

#### CIVIC TOURING COUPE

ADDS TO OR REPLACES EX-T FEATURES:

- T7" aluminum-alloy wheels
- 452-watt AM/FM Premium audio system with MP3/Windows Media® Audio playback capability and 10 speakers including subwoofer
- Auto-dimming rearview mirror
- Chrome door handles
- Display Audio System<sup>2</sup> with Honda Satellite-Linked Navigation System™<sup>2,5</sup> with bilingual Voice Recognition
- HD Radio™<sup>6</sup>
- Leather-trimmed seating surfaces
- LED headlights (high and low beam) with auto-on/off
- Mirror-integrated LED turn signal indicators
- Rain-sensing windshield wipers
- SiriusXM™<sup>2,7</sup>
- Wireless charging

#### CIVIC Si COUPE

KEY FEATURES:

- 205-hp<sup>1</sup>, 1.5-litre, 16-valve, Direct Injection, DOHC, turbocharged 4-cylinder engine
- 18" aluminum-alloy wheels
- 452-watt AM/FM Premium audio system with MP3/Windows Media® Audio playback capability and 10 speakers including subwoofer
- 6-speed manual transmission (MT)
- Aluminum-trimmed sport pedals
- Apple CarPlay™<sup>2,3</sup>/Android Auto™<sup>2,3</sup>
- Centre exhaust finisher
- Display Audio System<sup>2</sup> with Honda Satellite-Linked Navigation System™<sup>2,5</sup> with bilingual Voice Recognition
- Fog lights
- Heated front seats
- Helical limited slip differential
- Leather-wrapped steering wheel
- LED headlights (high and low beam) with auto-on/off
- Rear wing spoiler
- SiriusXM™<sup>2,7</sup>
- Sport mode button
- Wireless charging

#### HONDA SENSING™ TECHNOLOGIES

STANDARD ON LX (CVT), EX-T (CVT) AND TOURING

- Collision Mitigation Braking System™<sup>2</sup> (CMBS™)
- Forward Collision Warning (FCW) system<sup>2</sup>
- Lane Departure Warning (LDW) system<sup>2</sup>
- Road Departure Mitigation (RDM) system<sup>2</sup>
- Adaptive Cruise Control (ACC)<sup>2</sup> with Low-Speed Follow
- Lane Keeping Assist System (LKAS)<sup>2</sup>

# Hatchback Trims

#### CIVIC LX HATCHBACK

KEY FEATURES:

- 174-hp<sup>1</sup>, 1.5-litre, 16-valve, Direct Injection, DOHC, turbocharged 4-cylinder engine
- 7" colour TFT centre meter display with Driver Information Interface
- 12-volt power outlet
- 16" aluminum-alloy wheels (aero design)
- 60/40 split fold-down rear seatback
- 180-watt AM/FM audio system with MP3/Windows Media® Audio playback capability and 8 speakers
- 4-wheel Anti-lock Braking System<sup>2</sup> (ABS)
- 6-speed manual transmission (MT)
- Available continuously variable transmission (CVT)
- Apple CarPlay™<sup>2,3</sup>/Android Auto™<sup>2,3</sup>
- Automatic climate control with air-filtration system
- Bluetooth® Streaming Audio<sup>2,3</sup>
- Body-coloured door handles
- Body-coloured heated power door mirrors
- Body-coloured rear roofline spoiler
- Brake Assist
- Display Audio System<sup>2</sup> with HondaLink™<sup>2,3</sup>
- Drive-by-Wire Throttle System™
- Automatic climate control with air-filtration system
- Bluetooth® Streaming Audio<sup>2,3</sup>
- Body-coloured door handles
- Body-coloured heated power door mirrors
- Body-coloured rear roofline spoiler
- Brake Assist
- Display Audio System<sup>2</sup> with HondaLink™<sup>2,3</sup>
- Drive-by-Wire Throttle System™
- Driver's and front passenger's vanity mirrors
- Driver's seat with 6-way manual adjustment
- i-SRS airbag system (front)
- ECON mode button and Eco Assist™ system
- Electronic Brake-force Distribution (EBD)
- Exterior temperature indicator
- Folding door mirrors
- Front splash guards
- HandsFreeLink™-bilingual Bluetooth® wireless mobile phone interface<sup>2,3</sup>
- Heated front seats
- HondaLink™ Assist Automatic Emergency Response System<sup>2,3,4</sup>
- Illuminated steering wheel-mounted audio controls
- Independent multi-link rear suspension
- Independent strut front suspension
- Intermittent rear window wiper/washer
- Lower Anchors and Tethers for Children (LATCH)
- Map lights
- Multi-angle rearview camera<sup>2</sup> with dynamic guidelines
- Multi-functional centre console storage
- Next-Generation Advanced Compatibility Engineering™ (ACE™) body structure
- Power door locks
- Power windows with auto-up/down driver's and passenger's window
- Power-assisted, ventilated front disc/solid rear disc brakes
- Projector-beam halogen headlights with auto-on/off
- Remote entry system with electronic trunk release
- Retractable cargo cover
- Security system
- Side curtain airbags with rollover sensor system
- Siri Eyes Free compatibility<sup>2,3</sup>
- SmartVent™ side airbags
- SMS text message<sup>2,3</sup>/E-mail function<sup>2,3</sup>
- Steering wheel-mounted cruise control
- Tilt and telescopic steering column
- USB device connector<sup>2</sup> (2)
- Variable Ratio Electric Power-Assisted Rack-and-Pinion Steering (EPS)
- Vehicle Stability Assist<sup>2</sup> (VSA™) with Traction Control
- Wi-Fi tethering<sup>3</sup>
- Available Honda Sensing™ Technologies (CVT)
- Available auto high beam (standard on Honda Sensing™ trims)

#### CIVIC SPORT HATCHBACK

ADDS TO OR REPLACES LX FEATURES:

- 180-hp<sup>1</sup>, 1.5-litre, 16-valve, Direct Injection, DOHC, turbocharged 4-cylinder engine
- 18" aluminum-alloy wheels (dark)
- 6-speed manual transmission (MT)
- Available continuously variable transmission (CVT)
- Available auto high beam (standard on Honda Sensing™ trims)
- Dual-zone automatic climate control with air-filtration system
- Dual centre exhaust with chrome finisher
- Fog lights
- Honda LaneWatch™ blind spot display<sup>2</sup>
- Illuminated driver's and front passenger's vanity mirrors
- Leather-wrapped steering wheel
- Power moonroof with tilt feature
- Proximity key entry system with pushbutton start
- Remote engine starter (CVT)
- Skirt package (Front, Side and Rear)
- Speed-sensing, variable intermittent windshield wipers
- Steering wheel-mounted paddle shifters (CVT)
- Textured aluminum pedals
- Available Honda Sensing™ Technologies (CVT)

#### CIVIC SPORT TOURING HATCHBACK

ADDS TO OR REPLACES SPORT FEATURES:

- 542-watt AM/FM Premium audio system with MP3/Windows Media® Audio playback capability and 12 speakers including subwoofer
- Auto-dimming rearview mirror
- Auto high beam
- 6-speed manual transmission (MT)
- Available continuously variable transmission (CVT)
- Display Audio System<sup>2</sup> with Honda Satellite-Linked Navigation System™<sup>2,5</sup> with bilingual Voice Recognition
- Driver's seat with 8-way power adjustment
- Front passenger's seat with 4-way power adjustment
- Heated rear seats
- HD Radio™<sup>6</sup>
- Leather-trimmed seating surfaces
- LED headlights (high and low beam) with auto-on/off
- Road Departure Mitigation (RDM) system<sup>2</sup>
- Rain-sensing windshield wipers
- SiriusXM™<sup>2,7</sup>
- Wireless charging
- Honda Sensing™ Technologies

#### CIVIC HATCHBACK TYPE R

KEY FEATURES:

- 306-hp<sup>1</sup>, 2.0-litre, 16-valve, Direct Injection, DOHC, VTEC® turbocharged 4-cylinder engine
- 20" aluminum-alloy wheels (Piano Black with Red Styling line)
- 3-mode drive system (Comfort/Sport/+R)
- 542-watt AM/FM Premium audio system with MP3/Windows Media® Audio playback capability and 12 speakers including subwoofer
- 6-speed manual transmission (MT) with rev-manual control
- Adaptive Damper System
- Aluminum shift knob
- Apple CarPlay™<sup>2,3</sup>/Android Auto™<sup>2,3</sup>
- Body-coloured vortex generator
- Brembo® 4-piston aluminum front brake calipers
- Display Audio System<sup>2</sup> with Honda Satellite-Linked Navigation System™<sup>2,5</sup> with bilingual Voice Recognition
- Front floor mats with Type R logo
- Helical limited slip differential
- Honda LaneWatch™ blind spot display<sup>2</sup>
- LED fog lights
- LED headlights (high and low beam) with auto-on/off
- Power-assisted, ventilated and cross drilled front disc/solid rear disc brakes
- Rear wing spoiler
- Red Honda "H" badges (front/rear)
- Red/black suede-effect fabric seats with Type R logo
- Seating capacity: 4
- Skirt package (front, side and rear) with carbon fibre finish with red styling line
- Triple centre exhaust with chrome finisher
- Type R serial number plate
- Wireless charging

#### HONDA SENSING™ TECHNOLOGIES

AVAILABLE ON LX (CVT) AND SPORT (CVT), STANDARD ON SPORT TOURING

- Collision Mitigation Braking System™<sup>2</sup> (CMBS™)
- Forward Collision Warning (FCW) system<sup>2</sup>
- Lane Departure Warning (LDW) system<sup>2</sup>
- Road Departure Mitigation (RDM) system<sup>2</sup>
- Adaptive Cruise Control (ACC)<sup>2</sup> with Low-Speed Follow\*
- Lane Keeping Assist System (LKAS)<sup>2</sup>

\* Low-Speed Follow not available on 6-speed manual transmission (MT).

<sup>[1]</sup> Horsepower and torque calculations reflect SAE net, Rev. 08/04, SAE J1349 procedures

<sup>[2]</sup> None of the features we describe are intended to replace the driver's responsibility to exercise due care while driving. Drivers should not use handheld devices or operate certain vehicle features unless it is safe and legal to do so. Some features have technological limitations. For additional feature information, limitations and restrictions, please visit www.honda.ca/disclosures or refer to the vehicle's Owner's Manual.

<sup>[3]</sup> Only compatible with certain devices and operating systems. Operation may be dependent upon: 1. connection to vehicle's built-in Wi-Fi hotspot, or 2. GPS satellite signal reception and available cellular data and/or voice connection; associated charges (incl. data plans, roaming charges and/or other amounts charged by your wireless carrier) may apply.

<sup>[4]</sup> Operation requires wireless mobile phone to be paired with the vehicle. Operation is dependent upon cellular data and/or voice connection availability and GPS satellite signal reception.

<sup>[5]</sup> Map database covers major metropolitan areas in Canada and 48 contiguous U.S. states.

<sup>[6]</sup> Coverage varies by market.

<sup>[7]</sup> Only available in certain areas. Includes a no-charge trial of three months.

<sup>[1]</sup> Horsepower and torque calculations reflect SAE net, Rev. 08/04, SAE J1349 procedures

<sup>[2]</sup> None of the features we describe are intended to replace the driver's responsibility to exercise due care while driving. Drivers should not use handheld devices or operate certain vehicle features unless it is safe and legal to do so. Some features have technological limitations. For additional feature information, limitations and restrictions, please visit www.honda.ca/disclosures or refer to the vehicle's Owner's Manual.

<sup>[3]</sup> Only compatible with certain devices and operating systems. Operation may be dependent upon: 1. connection to vehicle's built-in Wi-Fi hotspot, or 2. GPS satellite signal reception and available cellular data and/or voice connection; associated charges (incl. data plans, roaming charges and/or other amounts charged by your wireless carrier) may apply.

<sup>[4]</sup> Operation requires wireless mobile phone to be paired with the vehicle. Operation is dependent upon cellular data and/or voice connection availability and GPS satellite signal reception.

<sup>[5]</sup> Map database covers major metropolitan areas in Canada and 48 contiguous U.S. states.

<sup>[6]</sup> Coverage varies by market.

<sup>[7]</sup> Only available in certain areas. Includes a no-charge trial of three months.



## Sedan Exterior & Interior Colours

CIVIC SEDAN	DX	LX	EX	EX-T	TOURING	Si
Crystal Black Pearl	Black Fabric	Black Fabric	Black Fabric	Black Fabric	Black or Ivory Leather	Black Fabric
Modern Steel Metallic	Black Fabric	Black Fabric	Black Fabric	Black Fabric	Black Leather	Black Fabric
Aegean Blue Metallic		Black Fabric	Black Fabric	Black Fabric	Black Leather	Black Fabric
Lunar Silver Metallic		Black Fabric*	Black Fabric	Black Fabric	Black Leather	
White Orchid Pearl			Black Fabric	Black Fabric	Black Leather	Black Fabric
Rallye Red			Black Fabric	Black Fabric	Black Leather	Black Fabric
Taffeta White	Black Fabric	Black Fabric				

\*CVT model only.

## Coupe Exterior & Interior Colours

CIVIC COUPE	LX	EX-T	TOURING	Si
Crystal Black Pearl	Grey Fabric	Grey Fabric	Grey Leather	Black Fabric
Aegean Blue Metallic	Grey Fabric	Grey Fabric	Grey Leather	Black Fabric
Rallye Red	Grey Fabric	Grey Fabric	Grey Leather	Black Fabric
Modern Steel Metallic		Grey Fabric	Grey Leather	Black Fabric
White Orchid Pearl		Grey Fabric	Grey Leather	Black Fabric
Taffeta White	Grey Fabric			

## Hatchback Exterior & Interior Colours

CIVIC HATCHBACK	LX	SPORT	SPORT TOURING	TYPE R
Crystal Black Pearl	Black Fabric	Black Fabric	Black Leather	Red/Black Suede-Effect Fabric <sup>††</sup>
White Orchid Pearl	Black Fabric	Black Fabric	Black Leather	
Lunar Silver Metallic	Black Fabric <sup>†</sup>	Black Fabric*	Black Leather*	
Aegean Blue Metallic	Black Fabric**	Black Fabric	Black Leather	
Rallye Red		Black Fabric	Black Leather	Red/Black Suede-Effect Fabric <sup>†</sup>
Polished Metal Metallic	Black Fabric	Black Fabric		
Sonic Grey Pearl			Black Leather	
Championship White				Red/Black Suede-Effect Fabric

\*CVT model only. \*\*Excludes Honda Sensing™ model. †CVT non-Honda Sensing™ model only. †Expected availability Spring 2018. ††Limited availability.



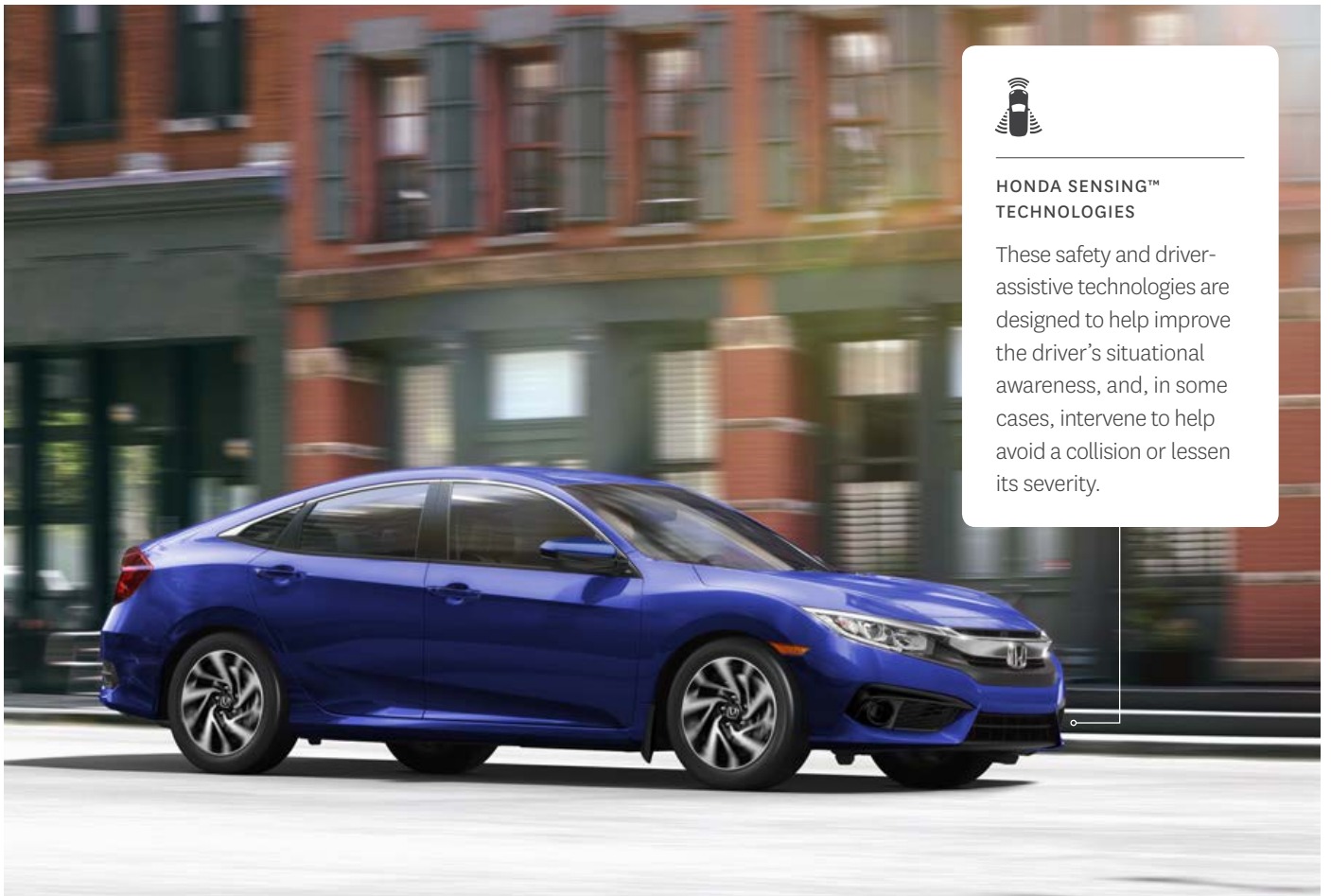
# 2018 Civic SE



**CIVIC**  
20

Canada's  
best-selling car  
20 years in a row.





#### HONDA SENSING™ TECHNOLOGIES

These safety and driver-assistive technologies are designed to help improve the driver's situational awareness, and, in some cases, intervene to help avoid a collision or lessen its severity.

## Two storied decades. One timeless drive.

While a lot has changed since 1998, some things stay constant. The boldly-designed SE arrives just in time to celebrate the twentieth straight year of the Civic as Canada's best-selling car, and it shows no signs of stopping. Sharp, sophisticated body lines and an aggressive stance make the SE stand out on any street. Whether you're touring the open road or exploring a new city, the 16" aluminum-alloy wheels make it a drive to remember. Around back, the rear deck lid spoiler is a subtle touch that makes a big statement, adding even more sleekness to the aerodynamic exterior.

But let's not forget about what's inside. The leather-wrapped steering wheel puts luxury in your hands, while the proximity key entry system with pushbutton start and remote engine starter puts the power at your fingertips.

The intuitive tech doesn't stop there, as the Honda Sensing™ Technologies suite comes standard on the SE. Features like the Forward Collision Warning (FCW) system<sup>1</sup>, Collision Mitigation Braking System™<sup>1</sup> (CMBS®), Lane Departure Warning (LDW) system<sup>1</sup>, Lane Keeping Assist System (LKAS)<sup>1</sup>, Road Departure Mitigation (RDM) system<sup>1</sup>, and Adaptive Cruise Control<sup>1</sup> (ACC) with Low-Speed Follow (LSF) are designed to help you drive more safely and with added confidence. For twenty years, the Civic has shown that milestones aren't just measured in distance.

1. None of the features we describe are intended to replace the driver's responsibility to exercise due care while driving. Drivers should not use handheld devices or operate certain vehicle features unless it is safe and legal to do so. Some features have technological limitations. For additional feature information, limitations and restrictions, please visit [www.honda.ca/disclaimers](http://www.honda.ca/disclaimers) and refer to the vehicle's Owner's Manual.





16" ALUMINUM-ALLOY WHEELS



LEATHER-WRAPPED STEERING WHEEL



REMOTE ENGINE STARTER



DECKLID SPOILER



PROXIMITY KEY ENTRY WITH PUSHBUTTON START



WALK-AWAY DOOR LOCK



# Make it even more special.



FRONT UNDERBODY SPOILER & FOG LIGHTS & 17" ALLOY WHEELS



TRUNK TRAY



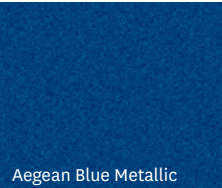


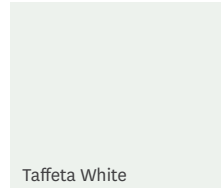

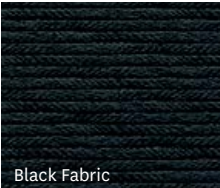
BODY SIDE MOLDING



ALL-SEASON FLOOR MATS (HIGH WALL)



## Exterior & Interior Colours

EXTERIOR					INTERIOR
					
Aegean Blue Metallic	Crystal Black Pearl	Modern Steel Metallic	Taffeta White	Lunar Silver Metallic	Black Fabric