

2011 Impreza WRX/STI Accessories



■ Moonroof Air Deflector
Helps reduce wind noise and sun glare.
F541SFG000

Increased wind noise may be experienced when Roof Carrier Bars are installed and moonroof is opened. If wind noise is encountered, Roof Carrier Bars should be removed when not in use.

- Fog Light Kit**
Casts a low and wide beam of light to enhance vision in inclement weather.
- H4510FG080EN (Dark Gray Metallic)
 - H4510FG080RL (Lightning Red)
 - H4510FG080VW (Obsidian Black Pearl)
 - H4510FG080I4 (Plasma Blue Pearl)
 - H4510FG080WU (Satin White Pearl)
 - H4510FG080TI (Spark Silver Metallic)
 - H4510FG080PG (WR Blue Mica)



■ Rear Bumper Cover
Helps protect the upper surface of the painted bumper from scratches and dings during loading and unloading.
E771SFG000 (5-Door Models)



■ Footwell Illumination Kit
Casts a soft red glow onto the front floor area. Also available in blue.
H201SSC100 (Red)
H201SSC000 (Blue)

■ Wheel Locks
Helps to deter theft of wheels and tires.
B321SFG000 (Alloy Wheels)



■ Car Cover
Helps protect the exterior of your Impreza. Made of lightweight breathable material.
M001SFG500 (4-Door) - Excludes STI
M001SFG800 (5-Door)
M001OAS020 (Car Cover Bag)



■ STI Shift Knobs
The ultimate shift knob for your Impreza. STI shift knobs combine the highest quality aluminum and leather materials, ergonomic shapes, and ideal weight balance.
C1010FG000 (5 M/T)
C1010FG100 (6 M/T)



■ STI Duracon Shift Knobs
Molded from Duracon polymer, these sleek looking and lightweight shift knobs give your Impreza a finishing touch that sets it apart from the crowd.
C1010FG300 (5 M/T)
C1010FG400 (6 M/T)



■ MOMO Shift Knob
Machined aluminum shift knob features a satin finish and perforated leather accents. Feels great in the palm of your hand and adds a stylish performance look to your WRX.
C1010SE000 (5 M/T)



■ Valve Stem Caps
Add a finishing touch to your Subaru. These caps feature "O" ring seals to help keep the valve orifices clean.
SOA342L108 (WRX)
SOA342L109 (SPT)
SOA342L114 (STI)
SOA342L128 (Subaru Star Cluster)



■ Auto-Dimming Mirror with Compass
Mirror darkens when headlights are detected from behind the vehicle. Includes integrated electronic compass.
H501SFG000



■ Auto-Dimming Mirror with Compass and HomeLink®
Mirror darkens when headlights are detected from behind the vehicle. Includes electronic compass and three integrated HomeLink buttons which can be programmed to operate most garage door openers and other HomeLink compatible devices.
H501SXA201
H501SSA040 (Installation Kit)



■ 10 Inch Powered Subwoofer
New! Provides powerful deep bass, and also assists in clean sound reproduction from all vehicle speakers. This is achieved by its integrated 100W amplifier and a passive crossover network. The self-contained unit mounts in the trunk of the 4-door models and behind the rear seat in 5-door models. Manufactured for Subaru of America by Kicker®.
H630SFG300 (4-Door w/out NAVI)
H630SFG400 (4-Door w/NAVI)
H630SFG100 (5-Door w/out NAVI)
H630SFG200 (5-Door w/NAVI)

May not be installed in conjunction with Cargo Tray, Cargo Net - Rear Seat Back or Cargo Nets - 4-Door.
Available January 2011



■ Rear Cup Holder
Provides two cup holders for rear seat passengers. Retracts into center console when not in use.
J201SFG000JC (WRX)
May not be installed in conjunction with 110 Volt Power Outlet.



■ All-Weather FloorMats
Custom-fitted, heavy-gauge floor mats help protect vehicle carpet from sand, dirt and moisture.
J501SFG200
Not intended for use over top of carpeted floor mats.



■ Ash Tray
Fits conveniently in the center console cup holder. Easily removed to empty contents.
92172AG040
F6010FG010 (Mounting Sleeve)



■ Battery Warmer
Warms vehicle's battery for easier starting in extremely cold weather. Plugs into a household electrical outlet.
J6010FS000



■ Engine Block Heater
Warms engine coolant to promote easier starting in extreme cold conditions. Plugs into a household electrical outlet.
A0910AS100



■ Center Armrest Extension
Raises up and forward for additional comfort when driving.
J2010AG000JD



■ Media Hub
Play music through the vehicle's stereo system from your iPod or USB mass storage device and control it using the radio and steering wheel buttons. Displays song information on radio screen and charges most portable music devices.
H621SFG700 (NAVI)

User experience varies by music storage device. Not all devices are compatible. Details at subaru.com/MediaHub.



■ SPT Turbo Heat Shield
The SPT Heat Shield helps to retain heat within the turbocharger helping to maintain turbocharger exhaust gas velocity. The shroud also helps keep heat generated by the turbocharger away from the intercooler.
E771SFG500



■ 110 Volt Power Outlet
New! Add power with a 110 Volt, 100-Watt 2-prong power outlet.
H7110SC100 (Excludes STI)
May not be installed in conjunction with Rear Cup Holder.

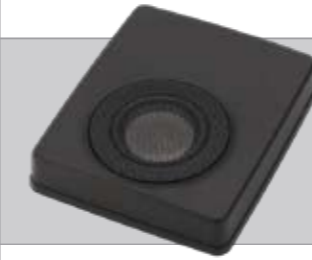


■ Security System Upgrade - Shock Sensor
Activates security system alarm when impact to the vehicle is detected.
H7110FG010



■ Satellite Radio
Satellite radio allows you to hear your favorite programming virtually anywhere in the continental US with up to 170 channels of digital quality music, sports, talk, and comedy. Your choice of XM® or SIRIUS®.
H621SSC100 (XM Satellite Radio Kit) - Excludes NAVI
H621SSC001 (SIRIUS Satellite Radio Kit) - Standard on WRX with NAVI

Required monthly subscription sold separately after trial period ends. Additional fees, equipment, and taxes may apply. Not available in Hawaii and Alaska.



■ Subwoofer
Big bass sound from a small package. Subwoofer is powered by an integrated amplifier and mounts under driver's seat.
H630SFG000 (NAVI Models)
H630SFG500 (Excludes NAVI Models)
Available March 2011

■ STI Short Throw Shifter
Significantly reduces shift throw lengths for crisper shifts and sportier driving feel.
C1010AG001 (5 M/T)
C1010FG600 (6 M/T)



■ STI Shifter Bushing
Improves shifting precision when used in conjunction with the STI Short Throw Shifter.
B0220FG300



■ SPT Oil Cap & Battery Hold Down
Replacement oil cap and battery hold down are manufactured from billet aluminum, anodized in Steel Gray or SPT Blue and laser etched with SPT logos.
SOA3881240 (Oil Cap-Gray)
SOA3881220 (Battery Hold Down-Gray)
SOA3881230 (Oil Cap-Blue)
SOA3881210 (Battery Hold Down-Blue)



■ Anti-Slip Mat (not shown)
Provides a slip resistant covering for rear cargo area trays, bins and carpeted surfaces.
J5010LS040



■ Severe Weather Companion
The severe weather kit contains just about everything needed to handle an unexpected weather emergency while traveling. Included are items which help provide the basic necessities such as warmth, light, water, first aid, and the ability to signal for help; all packaged in a handy padded canvas carrying case.
SOA868V9500

■ Cargo Organizer
Conveniently transports your outdoor gear or up to four grocery bags. Quickly collapses for easy storage when not in use.
SOA567T100



- Auto/Media
- Exterior
- Interior
- Racking
- Performance



Subaru of America reserves the right to change or withdraw accessories at any time without prior notice and without incurring the obligation to make changes to any accessories previously sold. All images are representative.



Subaru, Impreza, WRX, STI and SPT are registered trademarks. Bluetooth is a trademark of Bluetooth SIG. BlueConnect and HomeLink are trademarks of Johnson Controls, Inc. iPod is a trademark of Apple, Inc. SIRIUS is a trademark of SIRIUS XM Radio, Inc. XM is a trademark of XM Satellite Radio, Inc. MOMO is a trademark of Momo S.p.A. Corp.

Exhaust Finisher

Aluminum trim pieces add a serious performance look to the rear of the 5-door WRX and STI models.

E7710FG030



STI Front Lip Spoiler

STI Front Lip Spoiler gives WRX and WRX STI a mean, ground-hugging attitude.

E2410FG140



Body Side Molding

Attractive, color-matched moldings coordinate with the styling of the vehicle while helping to protect doors from unsightly dings.

- J101SFG000EN (Dark Gray Metallic)
- J101SFG000RL (Lightning Red)
- J101SFG000VW (Obsidian Black Pearl)
- J101SFG000I4 (Plasma Blue Silica)
- J101SFG000WU (Satin White Pearl)
- J101SFG000TI (Spark Silver Metallic)
- J101SFG000PG (WR Blue Mica)



Carbon Fiber B Pillar Set

New! Continue the high-tech look with the addition of real carbon fiber that includes the SPT logo embedded in the clear coat.

J101SFG110

Deck Lid Spoiler

Add a performance look to your WRX. Spoiler comes pre-painted and features an integrated LED brake light.

- E721SFG200EN (Dark Gray Metallic)
- E721SFG200RL (Lightning Red)
- E721SFG200VW (Obsidian Black Pearl)
- E721SFG200WU (Satin White Pearl)
- E721SFG200TI (Spark Silver Metallic)
- E721SFG200PG (WR Blue Mica)

SPT Carbon Fiber Trunk Trim

Give your Impreza 4-door that high-tech look with this carbon fiber accent. The trim piece is made from real carbon fiber and has the SPT logo embedded in the clear coat.

J101SFG100



Cargo Tray - 5-Door

Helps protect cargo area from dirt and spills. Can be easily removed and rinsed clean.

J501SFG300JH

May not be installed with 10 Inch Powered Subwoofer.



Carbon Fiber Sill Inserts

New! Dress up the sill plates with real carbon fiber inserts. Includes SPT logo embedded in the clear coat.

E101SFG000 (WRX Only)

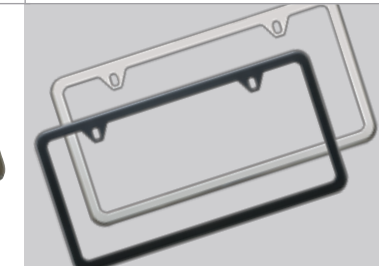
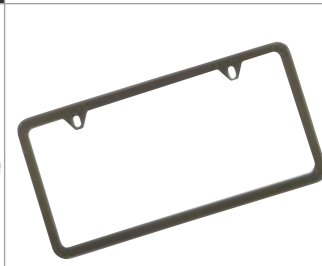


Cargo Nets - 4-Door

Holds smaller cargo items upright inside the trunk on the Impreza 4-door. Kit includes 2 nets.

F551SFG001

May not be installed with 10 Inch Powered Subwoofer.



License Plate Frames

Frames are available with a variety of UV resistant polyurethane logos and come in either mirror polish or matte black.

Matte Black

- SOA342L124 (SPT)
- SOA342L125 (WRX)
- SOA342L126 (STI)

Polished Stainless Steel

- SOA342L121 (SPT)
- SOA342L122 (WRX)
- SOA342L123 (STI)
- SOA342L127 (Subaru)

Carbon Fiber License Plate Frames

New! Carbon fiber composite license plate frame is hand made with thick resin-impregnated carbon fiber cloth, and is finished in a UV resistant clear coat. Kit includes hardware hider caps.

- SOA342L143 (SPT)
- SOA342L144 (WRX)
- SOA342L145 (STI)

Slim Carbon Fiber License Plate Frame

New! Carbon fiber composite license plate frame is hand made with thick resin-impregnated carbon fiber cloth, and is finished in a UV resistant clear coat. Kit includes hardware hider caps.

SOA342L142

Slim License Plate Frames

Manufactured from heavy-gauge 304 stainless steel that will not rust or corrode. Kit includes hardware hider caps.

- SOA342L104 (Polished Stainless Steel)
- SOA342L105 (Matte Black)

Front License Plate Bracket

Stainless steel with black powder coated finish. Includes mounting hardware.

SOA342L120

Euro-Style Marque Plates

Manufactured from 304-stainless steel and available with several different logos and finishes. Kit includes hardware hider caps.

- SOA342L130 (WRX-Stainless Steel)
- SOA342L131 (WRX-Matte Black)
- SOA342L132 (STI-Stainless Steel)
- SOA342L133 (STI-Matte Black)

Carbon Fiber Key Fobs

New! Carbon fiber composite and stainless steel key fobs with leather strap and universal split ring.

- SOA342L138 (Subaru)
- SOA342L139 (STI)
- SOA342L140 (SPT)
- SOA342L141 (WRX)



■ Cargo Net – Rear

Neatly holds cargo upright and prevents it from sliding while the vehicle is in motion.
F551SFG101



■ Cargo Net - Rear Seat Back

Additional cargo net storage to keep the cargo area organized.
F551SFG201

May not be installed with 10 Inch Powered Subwoofer.



■ Bumper Corner Moldings

Helps protect the corners of painted bumpers from scratches and dings. Kit includes four moldings.
E7710AS200



■ Cargo Tray – 4-Door

Helps protect the trunk area from stains and dirt while providing a surface that helps reduce the shifting of cargo while driving.
J501SFG400

May not be installed with 10 Inch Powered Subwoofer.



■ Rear Bumper Protector

Helps protect top surface of rear bumper when loading or unloading trunk or cargo area. Not compatible with Rear Bumper Cover or Cargo Tray.
E101EAJ500

Available December 2011

■ SPT Boost Gauge

Displays engine vacuum in inches of Hg and boost in PSI. Bright red illumination matches the vehicle instrument panel lighting and goes dark when the engine is turned off. Kit includes mounting cup and bracket.

H501SFG600

Available March 2011



■ SPT Performance Exhaust System

These exhaust systems feature full stainless steel construction with smooth mandrel bends for low restriction and that famous boxer engine sound. Both systems incorporate optimized tubing diameters and exhaust tips that are polished and etched with the SPT logo.

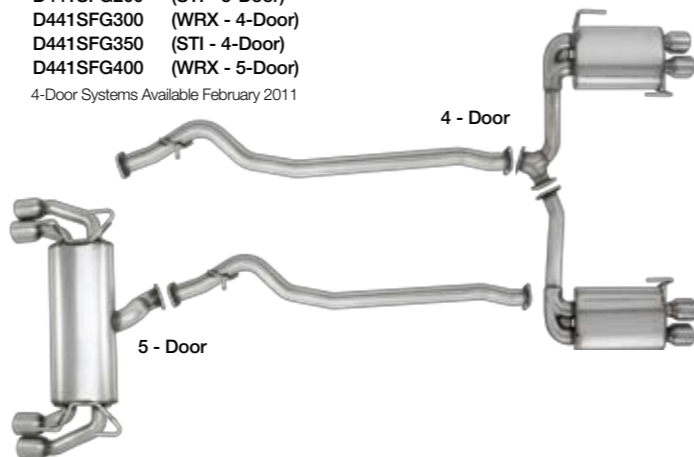
D441SFG200 (STI - 5-Door)

D441SFG300 (WRX - 4-Door)

D441SFG350 (STI - 4-Door)

D441SFG400 (WRX - 5-Door)

4-Door Systems Available February 2011



■ Roof Cargo Carrier

Provides 13 cubic feet of lockable storage capacity. Opens from rear to accommodate loading from three sides. Measures 56" L x 36" W x 18" H.†††
E361SAG200



■ Roof Cargo Carrier - Extended

Provides 16 cubic feet of lockable storage capacity. Convenient dual-side opening allows for loading from either side of the vehicle. Measures 76" L x 36" W x 16" H.†††
E361SAJ200



■ Ski and Snowboard Carrier

New design holds up to six pairs of skis or four snowboards. May also be used to carry fishing rods.†††
E361SFG300 (Ski Carrier)
E3610AS820 (Clamps)



■ Bike Carrier – Universal Fork Mount

A fork-mount bike carrier that fits aero, round, and square cross bar shapes without special clamps. It features quick and easy tool-free installation, and an easy-to-adjust sliding wheel tray that makes positioning the rear wheel a snap.†††

E361SAJ300 (Bike Carrier - Fork Mount)

E3610LS430 (Bike Wheel Holder) not shown

E361SXA100 (Bike Wheel Holder Clamps)



††† Roof Carrier Bars required. Consult vehicle owner's manual for total roof load limit.



■ Kayak Carrier

Cradles and securely transports most kayak hull shapes. Includes straps with padded buckles.†††

E361SXA200 (Kayak Carrier)

E361SXA100 (Clamps)

††† Roof Carrier Bars required. Consult vehicle owner's manual for total roof load limit.



■ Roof Carrier Bars

Can be installed or removed in minutes. Fits both 4- and 5-door models and are compatible with most Genuine Subaru roof attachments and carriers.

E361SFG400

Increased wind noise may be experienced when Roof Carrier Bars are installed and moonroof is opened. If wind noise is encountered, Roof Carrier Bars should be removed when not in use.



■ Bike Carrier – Roof Mounted

Each kit securely transports one bicycle. Lockable padded jaws clamp onto a bike with a 1"-3" downtube and hold it securely on the roof of the vehicle.†††

E361SXA300 (Bike Carrier)

E361SXA100 (Clamps)



■ Heavy-Duty Roof Cargo Basket

Constructed of powder-coated steel. Includes mounting hardware, black stretch net with hooks and a custom fairing to help deflect wind and reduce noise. Measures 44" L x 39" W x 6.5" H.†††

E361SSA200