



## WE'LL TAKE YOU EXACTLY WHERE YOU WANT TO GO.

You demand more from a vehicle than ever before. Exactly the same can be said of Chevrolet. For starters, you're looking for greener driving choices – Chevrolet offers more models that get better than 7 L/100 km highway fuel efficiency than any other manufacturer. Chevrolet also offers a range of vehicles powered by hybrid technology or alternative fuels. And just around the corner comes the arrival of the revolutionary Chevrolet Volt plug-in Extended-Range Electric Vehicle that can travel up to 64 km purely on electric power. Down the road, there are Hydrogen Fuel Cell Vehicles that point the way to a future of zero-emissions driving.

At Chevrolet, we take pride in more than the quality of our vehicles. We are also proud to be the Official Vehicle Supplier of the Vancouver 2010 Olympic and Paralympic Winter Games and of Canada's Olympic and Paralympic Teams. Chevrolet also demonstrates its enthusiastic support for Canada's athletes and coaches through its Making Dreams Possible and Chevrolet Safe & Fun Hockey initiatives. Share the passion.

For more information about Chevrolet visit [chevrolet.gm.ca](http://chevrolet.gm.ca)



\*Chevrolet is a brand of General Motors of Canada, the Official Vehicle Partner of the Vancouver 2010 Olympic and Paralympic Winter Games. <sup>TM</sup> 2009, VANOC. Used under License.



190-10-B-001E

2010 AVEO



2010 AVEO



2010 AVEO



It's about hanging out with your friends and pursuing your passions. You've arrived at a place in your life where you call the shots - you can do what you really want, when you want, with the people you want to share the experience with.

## THE SURPRISINGLY EVERYTHING AVEO.

There are many words you can use to describe Aveo. Here's a quick primer. Trying to think of a word for its statement-making styling? How about "striking"? And for its flexibility and cargo-carrying capacity - "mega" comes to mind. As for its 5.7 L/100 km highway fuel efficiency rating\* - a simple "wow" will do. What about available features like OnStar® and XM Satellite Radio™? They're "unexpected". And the new standard driver and front-passenger seat-mounted side-impact air bags? Definitely "reassuring". As for the eye-opening sticker price? "Sweet". The surprisingly striking, mega, wow, unexpected, reassuring and sweet 2010 Chevrolet Aveo<sup>5</sup> and Aveo Sedan.

\*2010 Aveo equipped with a 5-speed manual transmission, based on GM testing in accordance with approved Transport Canada test methods. Your actual fuel consumption may vary.

\*\* Available in 10 Canadian provinces and the 48 contiguous United States. Subscription sold separately after trial period.



At left: Aveo LT Sedan, shown in Imperial Blue Metallic with available Team Canada Edition Package; at right: Aveo<sup>5</sup> LT, shown in Victory Red with available Team Canada Edition Package. Find more information about Aveo at [chevrolet.gm.ca](http://chevrolet.gm.ca)



## ROOM FOR YOUR HEADSPACE – AND A WHOLE LOT MORE.

Aveo5 puts a very different face on the five-door hatchback with its head-turning styling. Details like its sharp-edged exterior lines and standard fog lights give this small car as much character as the people who drive it. But Aveo5 also makes allowances for the stuff you bring with you. Simply fold down the split-folding rear seatbacks and open up a remarkable 1054 litres of space. Aveo5 even makes allowances for the unexpected, providing extensive occupant protection that earned the highest U.S. government frontal and side-impact crash test ratings: five stars.\* You see – there’s plenty of room in your life for a car that is as unmistakably bold, yet practical as Aveo5.

\*Five-star rating is for the driver and front-passenger seating positions in the frontal crash test and for the front and rear passengers in the side-impact crash test. Model tested with side-impact air bags. U.S. government star ratings are part of the National Highway Traffic Safety Administration’s (NHTSA’s) New Car Assessment Program (NCAP) (safercar.gov).



**FIVE-STAR FRONTAL  
AND SIDE-IMPACT  
CRASH TEST RATING\***



Aveo5 LT, shown in Cardinal Red Metallic with available Team Canada Edition Package.

## IT'S NOT ONLY OUR ATHLETES WHO ARE PASSIONATE.

Canada's athletes make it onto the podium of the international stage thanks to their commitment, discipline, fortitude, talent, training, coaching and sheer hard work. But you don't have to be a member of one of Canada's Olympic or Paralympic teams to drive one of the Official Vehicles of the 2010 Vancouver Olympic and Paralympic Winter Games: the Aveo Team Canada Edition. It applies the pursuit of excellence to your driving, with a no additional charge power sunroof,\* 15-inch aluminum wheels, a rear spoiler, chrome door handles and premium entertainment features. Be inspired by Canada's athletes – and take your game to another level with the Aveo Team Canada Edition.

\* When Team Canada Edition Package is specified, optional power sunroof is available at no charge. See your dealer for details.



Aveo LT Sedan, shown in Imperial Blue Metallic with available Team Canada Edition Package.

## REINFORCES YOUR SUNNY DISPOSITION.

You look at driving as a joy, not a chore. Aveo embraces your enthusiasm, first by supporting you with comfortable seating, which includes standard driver's seat height and lumbar adjusters. Move up to an Aveo LT and the comforts – as well as the rewards – increase. There's standard air conditioning and a series of convenience features like power exterior mirrors, windows and door locks, plus cruise control. The finishing touch? No less than an available no additional charge power sunroof.\* Always drive on the sunny side of the street – in Aveo.

\*See your dealer for details.



Aveo LT models feature an available no additional charge power tilt-and-tip sliding sunroof.\* It's an option on LS models.



The flip-and-fold rear seat in Aveo5 folds down flat to increase your cargo capacity. Aveo Sedan features 60/40 split-folding rear seats.



Aveo5 LT interior, shown in Charcoal with available equipment.

## GOT YOUR TUNES. NOW YOU'VE GOT YOUR RIDE.

If you're into your music, you can really get into Aveo. Don't forget your preferred set list - all Aveos include an auxiliary audio input jack for your iPod® or other MP3 player. Or if discs are more your thing, Aveo includes a standard CD player with MP3 playback. Want to broaden your musical range? Then you'll want to go for the largest playlist on the planet and the most commercial-free music in digital quality sound with available XM Satellite Radio.\* It's part of the available Team Canada Edition Package, which also includes a six-speaker premium sound system and steering-wheel-mounted sound system controls. Tune in - to Aveo.

\* Available in 10 Canadian provinces and the 48 contiguous United States. Subscription sold separately after trial period.



If you don't go anywhere without your iPod, you'll go far with Aveo. An auxiliary audio input jack is standard. The Team Canada Edition Package even includes an audio input cable.



Brushed metallic instrument cluster accents are included with the Charcoal interior on LT models. The woodgrain-appearance accents shown are included with the Beige interior.



Aveo LT Sedan interior, shown in Beige with woodgrain-appearance accents and available equipment.

## TWEAK. TWEAK.



### FUEL EFFICIENCY

Engineering isn't always about huge technological breakthroughs. Sometimes it's about making a series of tweaks that produce important gains. Take Aveo. For 2010, we've increased the horsepower of the 1.6L engine at the same time we've improved city fuel efficiency. That's on top of fuel efficiency ratings that already reflected the benefits of sophisticated engine management features like Variable Valve Timing (VVT) and dual cam phasing. Just how good are Aveo's ratings? The 2010 Aveo delivers 5.7 L/100 km on the highway and 7.5 L/100 km in the city.\* The result is less fuel – and more fun. But, those aren't the only enhancements to Aveo for 2010 – driver and front-passenger seat-mounted side-impact air bags\*\* are now standard. Aveo – tweaking the affordable small car. Again.

\* 2010 Aveo equipped with a 5-speed manual transmission, based on GM testing in accordance with approved Transport Canada test methods. Your actual fuel consumption may vary.

\*\* A NOTE ON CHILD SAFETY: Always use safety belts and proper child restraints, even in vehicles equipped with air bags.

#### ONSTAR

The advanced OnStar communications and assistance service and one year of the Safe & Sound Plan are standard on LT models and available on LS.<sup>†</sup>

#### AIR BAGS

Occupant protection is enhanced by standard dual frontal air bags\*\* with a Passenger Sensing System and new standard driver and front-passenger seat-mounted side-impact air bags.

#### BRAKES

An available anti-lock braking system (ABS) helps you maintain steering control during hard-braking situations.

#### SAFETY CAGE BODY CONSTRUCTION

Aveo surrounds you and your passengers with a protective reinforced-steel safety cage. Rugged steel side-guard door beams further enhance side-impact protection.

#### FIVE-SPEED MANUAL TRANSMISSION

Aveo comes with a standard smooth-shifting 5-speed manual transmission that keeps you continually engaged in the driving experience. A 4-speed automatic transmission with Hold Control™ is available on all Aveo models.

#### CARGO

Aveo Sedan and Aveo5 are designed to provide a surprisingly generous cargo capacity. The Sedan's trunk isn't only spacious, it is also easy to load, thanks to its low sill height. The standard rear liftgate on Aveo5 opens up a rear cargo area up to 1054 L with the rear seats folded down.

#### FOG LIGHTS

You won't find fog lights on many cars in Aveo's price range, but they are standard on Aveo Sedan LT and all Aveo5 models.

#### AVAILABLE ALUMINUM WHEELS

Sporty 15-in. aluminum wheels with P185/55R15 tires are included with the available Team Canada Edition Package.

#### LONG-LIFE ENGINE COOLANT

Aveo's DEX-Cool™ engine coolant is designed to last 5 years or 240,000 km.<sup>††</sup>

#### OIL LIFE MONITORING SYSTEM

The Oil Life Monitoring System indicator on your instrument panel alerts you when an oil change is required, based on several calculations, not simply the number of kilometres driven. This can eliminate unnecessary oil changes and extend change intervals, saving you time, money and your impact on the environment.

#### QUIET RIDE

Double-sealed doors contribute to Aveo's quiet ride.

#### ENGINE IMMOBILIZER

For added security, an electronic engine immobilizer is standard.

#### HEAVY-DUTY EXHAUST SYSTEM

Canadian winters can be tough on a car's underbody and exhaust system. That's why we enhance Aveo's durability using heavy-duty exhaust system components.

<sup>†</sup> OnStar services require vehicle electrical system (including battery), wireless service and GPS satellite signals to be available and operating for features to function properly. OnStar acts as a link to existing emergency service providers. Subscription Service Agreement required. Ability to locate stolen vehicles varies with conditions. Call 1-888-4ONSTAR (1-888-466-7827) or visit [onstar.ca](http://onstar.ca) for OnStar's Terms and Conditions, Privacy Statement and details and system limitations.

<sup>††</sup> Whichever comes first. When properly maintained in accordance with the Owner's Manual and Maintenance Schedules. Maintenance needs may vary with use and driving conditions. Please refer to the Aveo Owner's Manual for more information.



## AVEO MODEL OVERVIEW

### AVEO LS SEDAN/AVEO5 LS

*Aveo LS includes these standard features:*

- 108 hp 1.6L DOHC 4-cylinder engine with Variable Valve Timing and dual cam phasing
- GM Oil Life Monitoring System
- Engine oil pan heater
- 5-speed manual transmission; 4-speed automatic transmission with Hold Control available
- 14-in. steel wheels with bolt-on wheel covers
- Dual frontal air bags with Passenger Sensing System and new standard driver and front-passenger seat-mounted side-impact air bags
- Driver seat height and lumbar adjusters
- CD player with MP3 playback and auxiliary audio input jack
- 60/40 split-folding rear seats (Sedan); flip-and-fold rear seats (Aveo5).

### AVEO LT SEDAN/AVEO5 LT

*Aveo LT enhances LS features with:*

- No additional charge power sunroof, see your dealer for details\*
- OnStar with one year of the Safe & Sound Plan
- Power heated exterior mirrors
- Remote keyless entry system
- Air conditioning
- Power windows and door locks
- Cruise control.

\* When Team Canada Edition Package is specified, optional power sunroof is available at no charge.

### AVEO LT SEDAN/AVEO5 LT TEAM CANADA EDITION

*This available package includes Aveo LT features plus:*

- 15-in. aluminum wheels
- Rear spoiler
- Chrome door handles (Sedan only)
- Leather-wrapped steering wheel
- Steering-wheel-mounted sound system controls
- 6-speaker premium sound system
- XM Satellite Radio.



## HOW TO TRANSFORM YOUR AVEO INTO A ONE-OF-A-KIND.

If you believe your vehicle represents an important expression of your individuality, take Aveo's style and functionality to the next level with the addition of Chevrolet Accessories. They were part of Aveo's development process to ensure they offer the same quality of fit, finish and function as the rest of the vehicle. They are backed by the 3-year/60,000 km New Vehicle Limited Warranty\* and can be included in your finance agreement through GMAC. Ask your dealer for a complete list of the Chevrolet Accessories available for Aveo, or visit [gm.ca](http://gm.ca)

\* Whichever comes first, when permanently installed by the dealer at the time you purchased your new vehicle, or for the remainder of the New Vehicle Limited Warranty if installed after the time of your vehicle purchase, but no less than 12 months.

Some Chevrolet Accessories available for Aveo include:

- Cargo organizer
- Splash guards
- Removable roof rack
- Moulded hood protector
- Painted brake calipers
- Hands-free phone
- Convenience net
- Ventvisors
- Spoiler kit
- All-weather floor mats
- Sunroof wind deflector
- Chrome tail light garnish
- Chrome mirror caps.



**ACCESSORIES**



## AVEO STANDARD AND OPTIONAL EQUIPMENT

	SEDAN/AVEO <sup>5</sup>	
	LS	LT
<b>SAFETY AND SECURITY</b>		
<b>Air bags</b> – driver and front-passenger, frontal with Passenger Sensing System	S	S
<b>Air bags</b> – driver and front-passenger, seat-mounted side-impact	S	S
<b>Brake/transmission shift interlock</b> (automatic transmission only)	S	S
<b>Door locks</b> – rear door, child-security	S	S
<b>Headlights</b> – Daytime Running Lights, warning-on-system	S	S
<b>Keyless entry system</b> – remote with alarm	–	S
<b>OnStar In-Vehicle Communications and Assistance Service</b> – includes 1 year of the Safe & Sound Plan*	0	S
<b>Safety restraints</b> – LATCH (Lower Anchors and top Tethers for Children), rear seats	S	S
<b>Safety restraints</b> – front shoulder, height-adjustable with pre-tensioners	S	S
<b>Theft-deterrent system</b> – electronic immobilizer	S	S

	SEDAN/AVEO <sup>5</sup>	
	LS	LT
<b>MECHANICAL</b>		
<b>Brakes</b> – power, front disc/rear drum	S	S
<b>Brakes</b> – 4-wheel anti-lock braking system (ABS)	0	0
<b>Drive</b> – front wheel	S	S
<b>Engine</b> – 1.6L ECOTEC I-4 VVT with MFI Horsepower – 108 @ 6400 rpm; Torque – 105 lb.-ft. @ 4000 rpm	S	S
<b>Engine</b> – oil pan heater	S	S
<b>Exhaust system</b> – heavy-duty stainless steel	S	S
<b>Steering</b> – power, rack-and-pinion	S	S
<b>Suspension</b> – front MacPherson strut/rear torsion beam	S	S
<b>Transmission</b> – 5-speed manual	S	S
<b>Transmission</b> – 4-speed automatic with overdrive and Hold Control <sup>1</sup>	0 <sup>2</sup>	0

	SEDAN/AVEO <sup>5</sup>	
	LS	LT
<b>EXTERIOR</b>		
<b>Fog lights</b>	–/S	S
<b>Door handles</b> – body colour	S	S
<b>Door handles</b> – chrome <sup>3</sup>	–	0/–
<b>Glass</b> – tinted windshield top band	S	S
<b>Liftgate</b> – rear liftgate	–/S	–/S
<b>Mirrors</b> – left and right manual remote	S	–
<b>Mirrors</b> – manual folding, power remote control, heated	–	S
<b>Spoiler</b> – rear liftgate-mounted	–/0	–/0
<b>Spoiler</b> – rear trunk-mounted	0/–	0/–

	SEDAN/AVEO <sup>5</sup>	
	LS	LT
<b>EXTERIOR (CONTINUED)</b>		
<b>Sunroof</b> – power, sliding glass panel	0	0 <sup>4</sup>
<b>Tires</b> – P185/60R14 all-season**	S	S
<b>Tires</b> – P185/55R15 all-season** <sup>3,5</sup>	–	0
<b>Wheels</b> – 14" x 5.5" steel with bolt-on wheel covers (A)	S	S
<b>Wheels</b> – 15" x 6" aluminum (B) <sup>3,6</sup>	–	0
<b>Windshield wipers</b> – 2-speed with variable delay (intermittent)	S	S
<b>Wiper/washer</b> – rear-window	–/S	–/S
<b>Team Canada Edition</b> – includes Team Canada Edition exterior badging, 15" x 6" aluminum wheels (B) with P185/55R15 all-season tires,** rear trunk-mounted spoiler (Sedan) or rear liftgate-mounted spoiler (Aveo <sup>5</sup> ), OnStar, XM Satellite Radio, <sup>1</sup> 6-speaker premium sound system, leather-wrapped steering wheel, leather-wrapped shifter (manual transmission only), steering-wheel-mounted sound system controls, chrome door handles (Sedan) and iPod cable <sup>7</sup>	–	0


	SEDAN/AVEO <sup>5</sup>	
	LS	LT
<b>INTERIOR</b>		
<b>Accents</b> – metallic grain accents with Charcoal interior, simulated woodgrain accents with Beige interior	–	S
<b>Air conditioning</b> – manual, with air filter	0 <sup>8</sup>	S
<b>Assist grips</b> – front-passenger and rear outboard	S	S
<b>Auxiliary power outlet</b> – 12-volt, centre console	S	S
<b>Clock</b> – digital	S	S
<b>Console</b> – front floor with storage and cupholders	S	S
<b>Cruise control</b> – electronic with resume, coast and decelerate/accelerate features	–	S
<b>Defogger</b> – electric rear-window with timer	S	S
<b>Door locks</b> – power	–	S
<b>Floor mats</b> – front and rear, carpeted	0	S
<b>Fuel door</b> – release, manual remote	S	S
<b>Heat ducts</b> – rear seat, floor	S	S
<b>Instrumentation</b> – analogue cluster (includes speedometer, tachometer, coolant temperature and fuel gauge)	S	S
<b>Instrumentation</b> – GM Oil Life Monitoring System	S	S
<b>Light</b> – dome	S	S
<b>Steering column</b> – tilt adjustable	S	S
<b>Steering wheel</b> – leather-wrapped with sound system controls (includes leather-wrapped shifter) <sup>3</sup>	–	0
<b>Sunshades</b> – LH and RH: vanity mirrors	S	S
<b>Trunk</b> – release, manual remote	S/–	–
<b>Trunk</b> – release, push-button remote	–	S/–
<b>Windows</b> – power	–	S
<b>Smoker's Package</b> – includes ashtray and lighter	S	S

	SEDAN/AVEO <sup>5</sup>	
	LS	LT
<b>SEATS</b>		
Cloth reclining front bucket seats with height/tilt adjustable head restraints, shopping bag hooks and passenger seatback pocket	S	S
Driver seat – manual height and lumbar adjusters	S	S
Seatback – rear, 60/40 split-folding	S	S
<b>SOUND SYSTEMS</b>		
All Aveo sound systems include an electronically tuned AM/FM stereo with CD player, MP3 playback compatibility, seek, scan, auxiliary audio input jack and 4-speaker sound system	S	S
XM Satellite Radio <sup>1</sup>	0 <sup>9</sup>	0

S – Standard. 0 – Optional individually or in combination with other optional equipment.

- Includes brake/transmission shift interlock.
- Not available with air conditioning.
- Included with available Team Canada Edition Package.
- Optional power sunroof available at no charge, when specified. See your dealer for details.
- Included with available 15" aluminum wheels.
- Includes P185/55R15 all-season tires.\*\*
- Team Canada Edition badges and iPod cable shipped separately.
- Not available with 4-speed automatic transmission.
- Requires available OnStar system.

\* OnStar services require vehicle electrical system (including battery), wireless service and GPS satellite signals to be available and operating for features to function properly. OnStar acts as a link to existing emergency service providers. Subscription Service Agreement required. Ability to locate stolen vehicles varies with conditions. Call 1-888-4ONSTAR (1-888-466-7827) or visit onstar.ca for OnStar's Terms and Conditions, Privacy Statement and system limitations and details.

\*\* All-season tires may not satisfy winter tire requirements in all regions of the country. Tires specifically designed for severe winter conditions and marked with the "winter tire" symbol  may be required during certain months or in certain regions. Contact your Provincial, Municipal or local road authority for information regarding which tires are required in your particular area.

† Available in 10 Canadian provinces and the 48 contiguous United States. Subscription sold separately after trial period.

## WHEELS

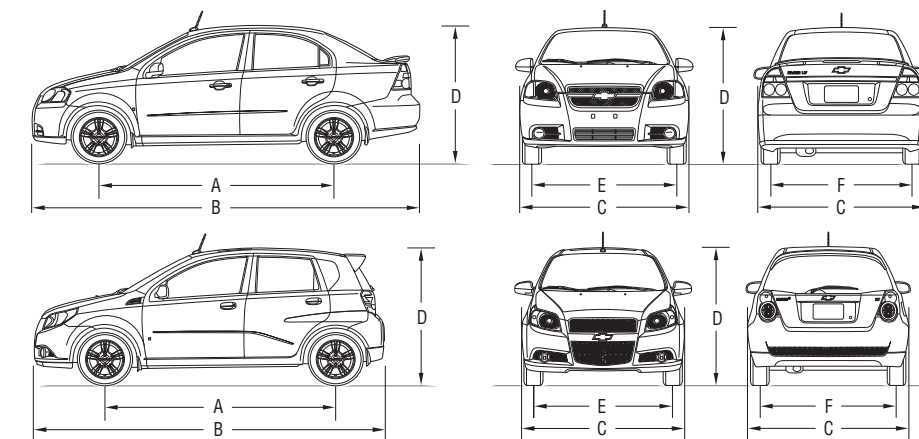


A – 14" steel wheel with bolt-on cover



B – 15" aluminum wheel

## DIMENSIONS



EXTERIOR, mm (in.)	Sedan	Aveo <sup>5</sup>
Wheelbase (A)	2480 (97.6)	2480 (97.6)
Length (B)	4310 (169.7)	3938 (155.0)
Width (C)	1710 (67.3)	1680 (66.1)
Height (D)	1505 (59.3)	1505 (59.3)
Front tread (E)	1450 (57.1)	1450 (57.1)
Rear tread (F)	1430 (56.3)	1410 (55.5)

INTERIOR, mm (in.) front/rear	Sedan	Aveo <sup>5</sup>
Headroom	998/950 (39.3/37.4)	998/955 (39.3/37.6)
Legroom	1048/898 (41.3/35.4)	1048/898 (41.3/35.4)
Shoulder room	1362/1340 (53.6/52.8)	1362/1340 (53.6/52.8)
Hip room	1310/1340 (51.6/52.8)	1310/1340 (51.6/52.8)

CAPACITIES/WEIGHT	Sedan	Aveo <sup>5</sup>
Cargo, L (cu. ft.)		
– rear seats up	350 (12.4)	425 (15.0)
– rear seats down	–	1054 (37.2)
Fuel tank, L (imp. gal.)	45 (9.9)	45 (9.9)
Curb weight (est.), kg (lb.)	1148 (2531)	1065 (2348)

## BACKED THE WAY THEY ARE BUILT

First we build our vehicles to achieve world-class quality standards and to offer the dependability Chevrolet is famous for. Then we stand behind our vehicles with the backing of the best coverage in Canada:

- 3-year/60,000 km New Vehicle Limited Warranty\*
  - 5-year/160,000 km Powertrain Component Limited Warranty, with \$0 deductible on repairs and the warranty is fully transferable at no charge\*
  - 5-year/160,000 km Courtesy Transportation\*
  - 5-year/160,000 km 24/7 Roadside Assistance\*
  - 6-year/160,000 km rust-through perforation coverage\*
  - 8-year/130,000 km coverage on catalytic converters and powertrain control modules (PCMs)\*.
- \*Whichever comes first. Conditions and limitations apply, see dealer for details.

### OTHER OWNERSHIP PRIVILEGES AND PROGRAMS:†

- **GM Protection Plan (GMPP)** – the only extended service plan backed by the resources and commitment of General Motors, GMPP may be purchased at the time of sale or subsequently during the New Vehicle Limited Warranty period
- **GM Goodwrench Service** – with GM-certified technicians and GM-approved parts, nobody knows your GM vehicle better.

† Conditions and limitations apply.

### TO HELP YOU PURCHASE A NEW VEHICLE:

- **GMAC Express Credit Application** – a convenient way to get pre-approved credit towards the purchase of your next GM vehicle
  - **GMAC Purchase Financing** – on the spot financing at your GM dealership††
  - **GM Student Bonus Program** – GM will cover the first two purchase finance payments on eligible new GM vehicles for students and recent graduates of high school, college or university†
  - **The GM Card** – eligible cardholders may be able to redeem up to \$3500 on GM Card® Earnings toward the Total Purchase Price on selected vehicles. For more information on The GM Card please call 1-800-461-3279.†
- † Conditions and limitations apply. †† Subject to eligibility.

### INFORMATION RESOURCES:

You can find more information about these programs from your GM dealer, or at these information centres:

- The GM website at [gm.ca](http://gm.ca)
- The GM Customer Communication Marketing Centre at **1-800-GM-DRIVE (1-800-463-7483 or 1-800-263-3830)** for TDD users)
- For information about GMAC visit [gmac.ca](http://gmac.ca) or call **1-800-616-4622**.

### A WORD ABOUT THIS BROCHURE

Some of the equipment shown or described throughout this brochure may be available at extra cost. We have tried to make this brochure comprehensive and factual. We reserve the right, however, to make changes at any time, without notice, in prices, colours, materials, equipment, specifications, models and availability. Specifications, dimensions, measurements, ratings and other numbers in this brochure and other printed materials provided at the dealership or affixed to vehicles are approximates based upon design and engineering drawings and prototypes and laboratory tests. Your vehicle may differ due to variations in manufacture and equipment. Since some information may have been adapted since the time of the printing, please check with your GM dealer for complete details. General Motors of Canada Limited reserves the right to lengthen or shorten the model year for any product, for any reason, or to start and end model years at different times.

### A WORD ABOUT ASSEMBLY

GM vehicles are equipped with engines and components produced and assembled by different operating units of General Motors, its subsidiaries and suppliers and these engines and components may change or be obtained from different sources from time to time. All such engines and components are approved for use in GM vehicles. Certain equipment ordered may be unavailable at the time of assembly and we suggest that you verify that your vehicle includes the equipment you ordered, or if there are changes, that they are acceptable to you.

### TRADEMARKS

The marks appearing in this brochure including, but not limited to: General Motors, GM, the GM emblem, Chevrolet, the Chevrolet emblem, Aveo and their respective logos, emblems, slogans and vehicle model names and body designs; and other marks such as DEX-Cool and Hold Control are trademarks of General Motors and/or General Motors of Canada Limited, its subsidiaries, affiliates or licensors.

GMAC is a registered trademark of the General Motors Acceptance Corporation of Canada, Limited.

OnStar, and the OnStar emblem are registered trademarks of the OnStar Corporation.

The XM name and related logos are trademarks of XM Canada, Canadian Satellite Radio Inc.

Apple and iPod are trademarks of Apple Computer, Inc., registered in the U.S. and other countries.

### COPYRIGHT

©Copyright 2009 General Motors of Canada Limited. All Rights Reserved. All text, images, graphics, and other materials in this brochure are subject to the copyright and other intellectual property rights of General Motors and/or General Motors of Canada Limited. These materials may not be reproduced, distributed or modified without the express written permission of General Motors and/or General Motors of Canada Limited.

Printed in Canada, September 2009.

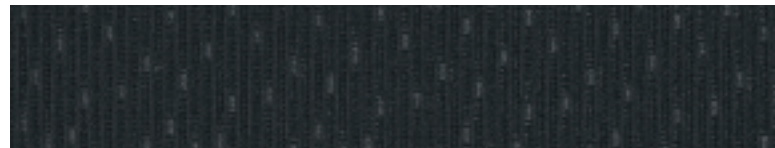


## INTERIOR FABRIC COLOURS

### Cloth



60C – Beige



81C – Charcoal

## EXTERIOR/INTERIOR COLOUR COMPATIBILITY

▼ Exterior	Interior ►	Beige	Charcoal
17 – Silver Ice Metallic		•	•
37 – Imperial Blue Metallic		•	•
50 – Summit White		•	•
51 – Gold Mist Metallic		•	•
57 – Cyber Gray Metallic		•	•
58 – Black Granite Metallic*		•	•
74 – Victory Red		•	•
79 – Cardinal Red Metallic		•	•

\*Available at extra cost.

## EXTERIOR COLOURS



17 - Silver Ice Metallic



37 - Imperial Blue Metallic



50 - Summit White



51 - Gold Mist Metallic



57 - Cyber Gray Metallic



58 - Black Granite Metallic\*



74 - Victory Red



79 - Cardinal Red Metallic

The exterior colours in this brochure are as close to the actual vehicle production colour as the printing process allows. For more accurate colour samples, ask your sales consultant to see the dealer showroom vehicle colour display.  
\*Available at extra cost.