



Chevrolet is a brand of General Motors of Canada the Official Vehicle Partner of the Vancouver 2010 Olympic and Paralympic Winter Games. ©2007, VANOC. Used under License.



OFFICIAL VEHICLE

190-10-B-017E

THE ALL-NEW 2010 EQUINOX



2010 EQUINOX





It's about taking full advantage of all the possibilities. Making a plan - and then being flexible enough to change when a new opportunity presents itself. That goes for you - and the vehicle that takes you there. Wherever life takes you.

IT'S A WHOLE NEW BALLGAME.

It's time to throw out the old playbook. It's time to take a fresh look at what a compact crossover vehicle should be. Introducing the all-new 2010 Chevrolet Equinox. It sets a new benchmark for its category, with dynamic styling and a remarkable combination of *more power and better fuel efficiency than either the Honda CR-V or Toyota RAV4. Equinox beats them both with astounding 9.2 L/100 km city and 6.1 L/100 km highway fuel-consumption ratings. In fact, the 2010 Equinox provides the best highway fuel efficiency in its class.** That's thanks to advanced technologies like Direct Injection and Variable Valve Timing (VVT), as well as a standard six-speed automatic transmission. Add to that an impressively spacious interior and a sophisticated and comprehensive safety package. We're not just talking new here. We're talking about a whole new approach to the compact crossover. The all-new 2010 Equinox.

*Based on Natural Resources Canada's 2009 Fuel Consumption Guide Ratings for competitors. 2010 FWD Equinox ratings with standard 4-cylinder engine based on GM Testing in accordance with approved Transport Canada test methods. Your actual fuel consumption may vary. Excludes other GM vehicles.



FUEL EFFICIENCY



Equinox LTZ, shown in Summit White.
For more information about the all-new 2010 Equinox, visit chevrolet.gm.ca



IT'S A MATTER OF WHAT YOU SEE AND WHAT YOU DON'T.

The look is bold. The lines are sharp and crisp. The stance is assured, just like the attitude. Also contributing to its character are Chevrolet's trademark dual-port grille and standard 17-inch aluminum wheels. But as with every element of the new Equinox, there's more than meets the eye. The more functional aspects of the design require a little more attention – to recognize how its size and efficient use of space deliver impressive utility. A closer examination will also reveal the exceptionally tight gaps between body panels – the product of one-piece body stampings. It demonstrates the obsessive approach to quality that affects every aspect of the manufacturing process. In the development of an all-new vehicle, there are no shortcuts. Creative design executed to perfection.



Equinox has style that matches its noteworthy substance. Sleek design with clean, sculpted lines and large, jewel-like headlights and tail lights.



Equinox LTZ, shown in Silver Ice Metallic with available equipment.

ARTICULATE YOUR PREFERENCES.

There's a real flair inside the new Equinox, thanks to the sporty dual cockpit design that is unique in its segment. Premium accents, like the blue ambient lighting, offer a luxury car appeal. The lighting also increases interior visibility in low-light conditions. The quality of the cabin is further enhanced by its spaciousness and the level of quiet achieved through the use of acoustic laminated glass and triple door seals in addition to many sound-dampening measures. But Equinox also attends to your personal preferences with reclining front bucket seats and a tilt and telescoping steering column. Rear passengers have the added comfort of the Multi-Flex[®] rear seat that can slide up to 200 mm (7.9 in.) to increase legroom. And the easy-entry door design and narrow step-over not only improve access – they also help keep your clothes from getting dirty. A stylish yet tremendously practical approach to design.



Equinox offers a remarkable amount of storage space – up to 1803 L (63.7 cu. ft.). The deep front centre console provides additional storage.



Equinox LTZ interior, shown in Brownstone with Jet Black Accents and available equipment.

CD. MP3. USB. XM. DVD. YOU GET THE PICTURE.

Technology has a range of different functions in Equinox. It's used to increase convenience with features like an available programmable power liftgate that enables you to restrict the height it opens when in tight quarters. Available Bluetooth® wireless connectivity allows you to make hands-free calls on compatible mobile phones. Entertainment technology includes a standard CD player with MP3 playback. 2LT and LTZ models add an eight-speaker 250-watt Pioneer® sound system, plus XM Satellite Radio™.* They also include a USB port that lets you plug in your iPod® or other MP3 player and make selections using the steering-wheel-mounted sound system controls. And you can go for the available DVD entertainment system that includes twin 203 mm (8 in.) flip-up LCD monitors. Getting a clear picture of what Equinox has to offer?

*Available in 10 Canadian provinces and the 48 contiguous United States. Subscription sold separately after 3 trial months.



The available Navigation System features a 178 mm (7-in.) touch-screen display, and an enhanced DVD based navigation system with voice recognition. Also included is a USB port that enables you to plug in and play music from your iPod or other MP3 player.



Equinox LTZ interior, shown in Brownstone with Jet Black Accents and available equipment.

POWERFUL OR FUEL-EFFICIENT? OR BOTH OF THE ABOVE.

The new Equinox doesn't ask you to trade off power for better fuel efficiency. With Direct Injection and Variable Valve Timing on both the standard 182 horsepower 2.4L ECOTEC four-cylinder engine and the available 264 horsepower 3.0L V6 engine, power and fuel efficiency are both maximized. As its name suggests, Direct Injection delivers fuel directly into the combustion chamber for a more complete burn, reducing both fuel consumption and emissions. Variable Valve Timing automatically adjusts the timing of the valve operation to optimize the use of fuel and increase power output. For performance you have to drive to believe. And the standard six-speed automatic transmission further improves fuel efficiency, with an ECO button that allows you to switch to a fuel-saving mode on models with the 2.4L engine. Advanced technology - for the power you need and the fuel efficiency you demand.



FUEL EFFICIENCY

Both Equinox engines are engineered with long-term dependability in mind. They are also backed by the best coverage in Canada, including a 5-year/160,000 km Powertrain Component Warranty* that offers 60,000 km more coverage than either Toyota or Honda.** For added reassurance.

The 2.4L engine is mated with a version of the six-speed automatic transmission that includes an ECO button. It allows you to drive in the most fuel-efficient mode possible for city driving, producing a city rating of just 9.2 L/100 km. *On the highway, the combination produces a class-leading 6.1 L/100 km rating.† That results in a driving range of up to 1166 km - at least 250 km more than any other vehicle in its class.*

*Whichever comes first. Conditions and limitations apply, see dealer for details.
**Based on 2009 competitive warranty information at time of printing.

†Based on Natural Resources Canada's 2009 Fuel Consumption Guide Ratings for competitors. 2010 FWD Equinox ratings with standard 4-cylinder engine based on GM Testing in accordance with approved Transport Canada test methods. Your actual fuel consumption may vary. Excludes other GM vehicles.



Equinox LTZ, shown in Cardinal Red Metallic.

MITIGATE RISK.

Even before you take to the road, Equinox helps reduce risk with an available ultrasonic rear parking assist and Rearview Camera System that helps you see objects like bikes behind you when you are backing up. When on the road, Equinox helps avoid a collision with enhanced driver control technology, including standard features like traction control and the StabiliTrak® electronic stability control system with rollover mitigation and trailer sway control – plus an available active All-Wheel-Drive (AWD) system. Equinox also features Hill Start Assist which holds the brakes 4 seconds after removing your foot from the brake pedal, to prevent rolling on steep grades. Should a collision prove unavoidable, Equinox provides a series of occupant protection measures, from the exceptional structural integrity created by nearly 100 percent use of high-strength steel in the frame's inner structure – to six standard air bags.* And the OnStar®** system in Equinox includes Advanced Automatic Collision Notification. Part of an advanced approach to risk mitigation.

*A NOTE ON CHILD SAFETY: Always use safety belts and proper child restraints, even in vehicles equipped with air bags. Refer to the vehicle Owner's Manual and child safety seat instructions for more information.

**OnStar services require vehicle electrical system (including battery), wireless service and GPS satellite signals to be available and operating for features to function properly. OnStar acts as a link to existing emergency service providers. Subscription Service Agreement required. Call 1-888-4ONSTAR (1-888-466-7827) or visit onstar.ca for OnStar's Terms and Conditions, Privacy Statement and details and system limitations.



The Rearview Camera System assists you when backing up. The display appears either in the interior rear-view mirror or, if your Equinox is equipped with the available Navigation System, on the system's screen. Standard on 2LT and LTZ.

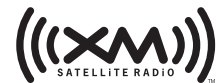
ONSTAR

Does your vehicle have a help button? With OnStar,** you can get the help you need at the push of a button. If you're in a collision, you don't even need to ask for help – sensors around your vehicle can automatically alert an OnStar Advisor. If your vehicle is stolen, we can use GPS technology to help police find it. OnStar and 1 year of the Safe & Sound Plan is included on all Equinox models. The available Directions & Connections Plan also includes Turn-by-Turn Navigation† – the simplest and smartest navigation system available. Just push the OnStar button and tell the Advisor where you want to go, then turn-by-turn directions are downloaded to your vehicle. No one offers more ways to help you on the road. Learn more at onstar.ca.



XM SATELLITE RADIO

Your listening preferences are very personal. XM Satellite Radio gives you access to the largest playlist on the planet and the most commercial-free music in digital-quality sound. That's on top of news, talk, comedy and sports channels – including more than 1000 NHL games. It all adds up to 130 channels to choose from, coast to coast.†† Why offer so much choice? XM Satellite Radio has to appeal to a wide range of tastes, with more than 9 million subscribers. And it's included on Equinox 2LT and LTZ and is available on 1LT models. Ask your dealer for more information.



†Turn-by-Turn Navigation not available in certain areas. Availability impacted by some geographical/cellular limitations, advisor assisted-routing available. Visit onstar.ca for coverage map.

††Available in 10 Canadian provinces and the 48 contiguous United States. Subscription sold separately after 3 trial months.



Equinox LTZ, shown in Summit White with available equipment.

EQUINOX MODEL OVERVIEW

EQUINOX LS FWD/AWD

Equinox LS models include these features:

- 182 hp 2.4L ECOTEC 4-cylinder engine with Variable Valve Timing (VVT) and Direct Injection
- GM Oil Life Monitoring System
- 6-speed automatic transmission
- 4-wheel disc brakes with ABS and Panic Brake Assist
- StabiliTrak electronic stability control system
- Traction control
- 4-wheel independent suspension
- 17-in. painted aluminum wheels
- Power exterior mirrors, manual folding
- Remote keyless entry system
- Six air bags
- Driver Information Centre
- Air conditioning
- Power windows and door locks
- Tilt and telescoping steering column
- Cruise control
- 4-way driver's seat with manual fore/aft, power up/down and power lumbar
- 2-way front passenger seat with manual fore/aft
- 60/40 split-folding Multi-Flex rear seat with ability to slide 200 mm (7.9-in.) fore/aft and 3-position reclining
- 6-speaker 80-watt sound system with CD player, MP3 playback and auxiliary audio input jack
- OnStar with 1 year of the Safe & Sound Plan.

EQUINOX 1LT FWD/AWD

Equinox 1LT models enhance LS features with:

- Halogen front fog lights
- Body-coloured, heated power exterior mirrors
- Roof rack side rails
- Automatic climate control
- Driver Information Centre with compass
- Premium cloth seating
- Carpeted floor mats
- Available 264 hp 3.0L DOHC V6 engine with Direct Injection and Variable Valve Timing (VVT)
- Available 18-in. machined aluminum wheels
- Available XM Satellite Radio.

EQUINOX 2LT FWD/AWD

Equinox 2LT models enhance 1LT features with:

- Remote vehicle starter system
- Rearview Camera System
- Tire pressure monitoring system
- Power 8-way driver seat adjuster with power lumbar
- 8-speaker 250-watt premium Pioneer sound system with subwoofer
- XM Satellite Radio
- USB port
- Bluetooth phone connectivity
- Available power sunroof
- Available Chrome Appearance Package with Rear Parking Assist
- Available programmable power rear liftgate
- Available heated front bucket seats
- Available perforated leather-appointed seating surfaces
- Available touch-screen Navigation System
- Available rear DVD entertainment system with twin seatback flip-up monitors.

EQUINOX LTZ FWD/AWD

Equinox LTZ models enhance 2LT features with:

- Programmable power rear liftgate
- Halogen projector style headlights
- Chrome door handles
- Chrome exterior mirrors
- Chrome front and rear skid plates
- Chrome roof rack side rails
- Ultrasonic rear parking assist
- Perforated leather-appointed seating surfaces
- Heated front bucket seats
- Memory setting for driver's seat and exterior mirror
- Available 19-in. dual-spoke chrome-clad aluminum wheels.



HOW TO TRANSFORM YOUR EQUINOX INTO A ONE-OF-A-KIND.

If you believe your vehicle represents an important expression of your individuality, take Equinox's style and functionality to the next level with the addition of Chevrolet Accessories. They were part of Equinox's development process to ensure they offer the same quality of fit, finish and function as the rest of the vehicle. They are backed by the 3-year/60,000 km New Vehicle Limited Warranty* and can be included in your finance agreement through GMAC. Ask your dealer for a complete list of the Chevrolet Accessories available for Equinox, or visit gm.ca

*Whichever comes first, when permanently installed by the dealer at the time you purchase your new vehicle.

Chevrolet Accessories available for Equinox include:

- Moulded hood protector
- Premium all-weather floor mats
- Chrome door handles
- Moulded splash guards
- Chrome fuel door
- 19" chrome wheels
- Cargo area organizer
- Rear fascia protector
- Roof rack cross bars
- Trailer hitch
- Side-window weather deflectors.



ACCESSORIES



2010 EQUINOX STANDARD AND OPTIONAL FEATURES

	LS FWD/AWD	1LT FWD/AWD	2LT FWD/AWD	LTZ FWD/AWD
SAFETY AND SECURITY				
Air bags – dual-stage, driver and front-passenger, frontal with Passenger Sensing System	S	S	S	S
Air bags – driver and front-passenger, thorax, seat-mounted side-impact	S	S	S	S
Air bags – front-to-rear, head curtain side-impact with rollover protection	S	S	S	S
Door locks – power, programmable with lock-out protection	S	S	S	S
Door locks – rear, child-security, power with I/P switch	S	S	S	S
Headlights – Daytime Running Lights with automatic light control	S	S	S	S
Headlights – halogen, projector style	–	–	–	S
Keyless entry system – remote with Panic feature	S	S	S	S
OnStar In-Vehicle Communications and Assistance Service – includes 1 year of the Safe & Sound Plan*	S	S	S	S
Safety restraints – LATCH (Lower Anchors and top Tethers for Children), in all rear seating positions	S	S	S	S
StabiliTrak – electronic stability control system with Trailer Sway Control	S	S	S	S
Theft-deterrent system – electronic immobilizer	S	S	S	S
Theft-deterrent system – content theft alarm, audible/visible	S	S	S	S
Traction control – electronic	S	S	S	S
Ultrasonic rear parking assist – rear obstacle detection system with audible/visible warning	–	–	0 ¹	S

	LS	1LT	2LT	LTZ
MECHANICAL				
Battery – with run-down protection	S	S	S	S
Brakes – power, 4-wheel disc with Hill Start Assist	S	S	S	S
Brakes – 4-wheel anti-lock braking system (ABS) with Panic Brake Assist	S	S	S	S
Drive – front-wheel (FWD)	S/–	S/–	S/–	S/–
Drive – active all-wheel (AWD)	–/S	–/S	–/S	–/S
Engine – 2.4L ECOTEC I-4 VVT with Direct Injection Horsepower – 182 @ 6700 rpm; Torque – 174 lb.-ft. @ 4800 rpm	S	S	S	S
Engine – 3.0L DOHC V6 VVT with Direct Injection Horsepower – 264 @ 6950 rpm; Torque – 222 lb.-ft. @ 5100 rpm	–	0 ^{2,3}	0 ³	0 ³
Engine – block heater	–	S	S	S
Exhaust system – aluminized stainless steel	S	S	S	S
Exhaust system – dual chrome-tipped (included with available 3.0L DOHC V6 engine)	–	0	0	0
Steering – power, electric, rack-and-pinion	S	S	S	S
Steering – power, hydraulic, rack-and-pinion (included with available 3.0L DOHC V6 engine)	–	0	0	0
Suspension – 4-wheel independent with front and rear stabilizer bars	S	S	S	S
Transmission – 6-speed automatic with overdrive	S	S	S	S
Trailer Towing Package – includes 4-pin harness connector and trailer hitch receiver	–	0	0	0
Vehicle starter system – remote	–	0 ⁴	S	S

	LS	1LT	2LT	LTZ
EXTERIOR				
Door handles – body-colour	S	S	S	–
Door handles – chrome	–	–	0 ¹	S
Fog lights – front, halogen	–	S	S	S
Glass – Solar-Ray [®] , tinted	S	S	S	S
Glass – Solar-Ray, deep-tinted behind front doors	–	S	S	S
Liftgate – power, with programmable height opening	–	–	0	S
Mirrors – manual folding, power remote control, black	S	–	–	–
Mirrors – manual folding, power remote control, heated, body-colour	–	S	S	–
Mirrors – manual folding, power remote control, heated, chrome	–	–	0 ¹	S
Rearview Camera System – reverse assist for parking or trailer towing	–	–	S	S


	LS FWD/AWD	1LT FWD/AWD	2LT FWD/AWD	LTZ FWD/AWD
EXTERIOR (CONTINUED)				
Roof rack – side rails, charcoal	–	S	S	–
Roof rack – side rails, chrome	–	–	0 ¹	S
Roof rack – cross bars, charcoal	–	0 ⁵	0 ⁵	0
Sunroof – power, tilt-sliding glass panel with express-open feature	–	–	0	0
Tires – P225/65R17 all-season, blackwall**	S	S	S	S
Tires – P235/55R18 all-season, blackwall**	–	0 ⁶	0 ⁶	0 ⁶
Tires – P235/55R19 all-season, blackwall**	–	–	–	0 ⁷
Tires – full-size spare with steel wheel	S	S	S	S
Wheels – 17" x 7" painted aluminum (A)	S	S	S	S
Wheels – 18" x 7" machined aluminum (B)	–	0	0	0
Wheels – 19" x 7" dual-spoke chrome-clad aluminum (C)	–	–	–	0 ⁸
Windshield wipers – 2-speed with 3-speed variable delay (intermittent)	S	S	S	S
Wiper/Washer – rear-window (intermittent)	S	S	S	S
Chrome Appearance Package with Rear Parking Assist – includes chrome front and rear skid plates, chrome door handles, chrome exterior rear-view mirror caps, chrome roof rack side rail accents and rear parking assist	–	–	0	S

	LS	1LT	2LT	LTZ
INTERIOR				
Air conditioning – manual with air filtration system and rear floor ducts	S	–	–	–
Air conditioning – automatic climate control with air filtration system and rear floor ducts	–	S	S	S
Auxiliary power outlets – 12 volt, four (2 front console, 1 back of console and 1 cargo)	S	S	S	S
Cargo area – security shade	–	0	0	S
Cargo convenience net	–	0 ⁵	0 ⁵	S
Console – front floor, includes armrest, 2 cupholders and concealed storage	S	S	S	S
Cruise control – electronic with resume, coast and decelerate/accelerate features	S	S	S	S
Cupholders – 2 front centre console, 2 rear centre armrest and 1 bottle holder in each door	S	S	S	S
Defogger – electric rear-window	S	S	S	S
Floor mats – front and rear, carpeted	–	S	S	S
Instrumentation – analogue gauges (includes speedometer, tachometer, coolant temperature and fuel level)	S	S	S	S
Instrumentation – Driver Information Centre (includes personalization and vehicle information features and GM Oil Life Monitoring System)	S	S	S	S
Instrumentation – Driver Information Centre includes compass	–	S	S	S
Instrumentation – Driver Information Centre includes tire pressure monitoring system	–	–	S	S
Lights – include theatre dimming feature, front reading, overhead centre dome and rear cargo area	S	S	S	S
Lights – ambient, cupholders, instrument panel centre stack and front centre console	S	S	S	S
Lights – ambient, instrument panel	–	S	S	S
Lights – ambient, interior door handles and door storage areas	–	–	–	S
Memory setting – driver's seat and exterior rear-view mirrors	–	–	–	S
Mirror – auto-dimming with Rearview Camera System display	–	–	S	S
Steering column – tilt adjustable and telescopic	S	S	S	S
Steering wheel – leather-wrapped with sound system controls	–	0 ⁴	S	S
Sunshades – dual with illuminated vanity mirrors	S	S	S	S
Windows – power with express-down feature on all windows	S	S	S	S
Cargo Management Package – includes rear cargo area security shade, cargo convenience net and roof rack cross bars	–	0	0	–
Vehicle Interface Package – includes Bluetooth phone connectivity, leather-wrapped steering wheel with sound system controls, remote vehicle starter system and USB port	–	0	–	–

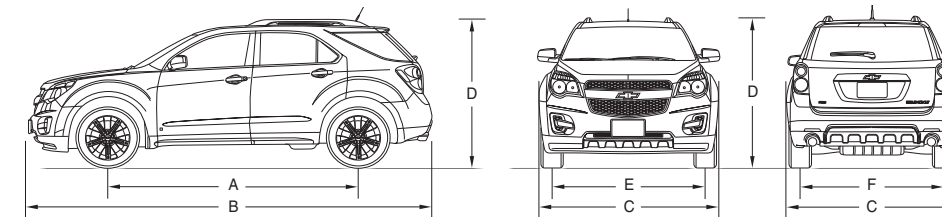
	LS FWD/AWD	1LT FWD/AWD	2LT FWD/AWD	LTZ FWD/AWD
SEATS				
Reclining front bucket seats	S	S	S	S
Cloth	S	–	–	–
Premium cloth	–	S	S	–
Perforated leather-appointed seating surfaces	–	–	0	S
4-way driver adjuster – power up/down, manual fore/aft and power lumbar	S	S	–	–
Power 8-way driver seat adjuster – with power lumbar	–	–	S	S
Heated driver and front-passenger seats	–	–	0 ⁹	S
Rear seat – Multi-Flex sliding/reclining rear seats, with the ability to slide 200 mm (7.9"), includes 60/40 split-folding seatbacks and 3-position recline feature	S	S	S	S
Rear seat – centre armrest with 2 cupholders	S	S	S	S

	LS	1LT	2LT	LTZ
ENTERTAINMENT SYSTEMS				
All Equinox sound systems include an electronically tuned AM/FM stereo with CD and MP3 playback compatibility, Radio Data System [®] (RDS), speed-compensated volume, auxiliary audio input jack and exterior temperature display	S	S	S	S
As above, plus USB port located in centre console	–	0 ⁴	S	S
AM/FM stereo with Navigation System – includes 178 mm (7") touch screen display, enhanced DVD based navigation system with points-of-interest and voice-based commands, USB port, 40 GB hard drive for downloading music files and time shifting up to 20 minutes ¹⁰	–	–	0	0
XM Satellite Radio ¹	–	0	S	S
Bluetooth – utilizes vehicle sound system, microphone, voice recognition and controls with Bluetooth-enabled mobile phones	–	0 ⁴	S	S
6-speaker, 80-watt sound system	S	S	–	–
8-speaker, 250-watt premium Pioneer sound system with subwoofer	–	0 ¹¹	S	S
Rear seat entertainment system – includes twin seatback mounted 203 mm (8") flip-up LCD colour monitors, DVD video and audio playback with surround sound, aux audio/video inputs and 2 GB internal flash memory for time shifting and recording from CD or USB port	–	–	0	0

- S – Standard.
 0 – Optional individually or in combination with other optional equipment.
 1 – Included with available Chrome Appearance Package with Rear Parking Assist.
 2 – Requires available 8-speaker Pioneer sound system.
 3 – Requires available 18" machined aluminum wheels.
 4 – Included with available Vehicle Interface Package.
 5 – Included with available Cargo Management Package.
 6 – Included with available 18" machined aluminum wheels. Requires available 3.0L DOHC V6 engine.
 7 – Included with available 19" dual-spoke chrome-clad aluminum wheels. Requires available 3.0L DOHC V6 engine.
 8 – Interim availability on AWD models.
 9 – Included with perforated leather-appointed seating surfaces.
 10 – At time of print, detailed map coverage is available for most major urban areas of the United States and for certain metropolitan areas of Canada (Vancouver, Calgary, Edmonton, Winnipeg, Windsor, London, Toronto, Ottawa, Montreal, Quebec City and Halifax). Coverage is significantly limited outside these areas.
 11 – Requires available XM Satellite Radio.

- *OnStar services require vehicle electrical system (including battery), wireless service and GPS satellite signals to be available and operating for features to function properly. OnStar acts as a link to existing emergency service providers. Subscription Service Agreement required. Call 1-888-4-ONSTAR (1-888-466-7827) or visit onstar.ca for OnStar's Terms and Conditions, Privacy Statement and details and system limitations.
 **All-season tires may not satisfy winter tire requirements in all regions of the country. Tires specifically designed for severe winter conditions and marked with the "winter tire" symbol  may be required during certain months or in certain regions. Contact your Provincial, Municipal or local road authority for information regarding which tires are required in your particular area.
 †Available in 10 Canadian provinces and 48 contiguous United States. Subscription sold separately after 3 trial months.

DIMENSIONS



EXTERIOR, mm (in.)	
Wheelbase (A)	2857 (112.5)
Length (B)	4771 (187.8)
Width (C)	1842 (72.5)
Height (D) – without roof rack	1684 (66.3)
– with roof rack	1760 (69.3)
Front tread (E)	1587 (62.5)
Rear tread (F)	1570 (61.8)

INTERIOR, mm (in.) front/rear	
Headroom	1012/995 (39.8/39.2)
Legroom	1046/1013 (41.2/39.9)
Shoulder room	1418/1405 (55.8/55.3)
Hip room	1399/1304 (55.1/51.1)

	2.4L ECOTEC I-4	3.0L DOHC V6
CAPACITIES/WEIGHT		
Cargo volume, L (cu. ft.)		
– rear seats in position	889 (31.4)	
– rear seats folded	1803 (63.7)	
Fuel tank, L (imp. gal.)	71 (15.6)	79 (17.4)
Curb weight (est.), kg (lb.)		
– LS FWD	1706 (3761)	–
– LS AWD	1782 (3929)	–
– 1LT FWD	1710 (3770)	1789 (3944)
– 1LT AWD	1785 (3935)	1860 (4101)
– LTZ FWD	1741 (3838)	1820 (4012)
– LTZ AWD	1803 (3975)	1892 (4171)

TOWING	
2.4L I-4 VVT and 3.23 (FWD) or 3.53 (AWD) final drive ratio: 680 kg (1500 lb.) maximum gross trailer weight ^{††}	
3.0L V6 VVT and 2.77 final drive ratio: 1588 kg (3500 lb.) maximum gross trailer weight ^{††}	

^{††}When properly equipped, includes weight of trailer, cargo, passengers and equipment. All towing recommendations are subject to change. Trailer tongue load should be 10% of the maximum trailer weight but should not exceed the load rating specified for that vehicle, engine or hitch combination. All Equinox models are flat-towable (behind motorhomes). See your dealer or refer to the Equinox Owner's Manual for details.

BACKED THE WAY THEY ARE BUILT

First we build our vehicles to achieve world-class quality standards and to offer the dependability Chevrolet is famous for. Then we stand behind our vehicles with the backing of the best coverage in Canada:

- 3-year/60,000 km New Vehicle Limited Warranty*
 - 5-year/160,000 km Powertrain Component Limited Warranty, with \$0 deductible on repairs and the warranty is fully transferable at no charge**
 - 5-year/160,000 km Courtesy Transportation*
 - 5-year/160,000 km 24/7 Roadside Assistance*
 - 6-year/160,000 km rust-through perforation coverage*
 - 8-year/130,000 km coverage on catalytic converters and powertrain control modules (PCMs)*.
- *Whichever comes first. Conditions and limitations apply, see dealer for details.

OTHER OWNERSHIP PRIVILEGES AND PROGRAMS:†

- **GM Protection Plan (GMPP)** – the only extended service plan backed by the resources and commitment of General Motors, GMPP may be purchased at the time of sale or subsequently during the New Vehicle Limited Warranty period
- **GM Goodwrench Service** – with GM-certified technicians and GM-approved parts, nobody knows your GM vehicle better.

†Conditions and limitations apply.

TO HELP YOU PURCHASE A NEW VEHICLE:

- **GMAC Express Credit Application** – a convenient way to get pre-approved credit towards the purchase of your next GM vehicle
- **GMAC Purchase Financing** – on the spot financing at your GM dealership††
- **GM Student Bonus Program** – GM will cover the first two purchase finance payments on eligible new GM vehicles for students and recent graduates of high school, college or university†
- **The GM Card** – eligible cardholders may be able to redeem up to \$3500 on GM Card® Earnings toward the Total Purchase Price on selected vehicles. For more information on The GM Card please call 1-800-461-3279.†

†Conditions and limitations apply. ††Subject to eligibility.

INFORMATION RESOURCES:

You can find more information about these programs from your GM dealer, or at these information centres:

- The GM website at gm.ca
- The GM Customer Communication Marketing Centre at **1-800-GM-DRIVE (1-800-463-7483 or 1-800-263-3830** for TDD users)
- For information about GMAC visit gmac.ca or call **1-800-616-4622**.

A WORD ABOUT THIS BROCHURE

Some of the equipment shown or described throughout this brochure may be available at extra cost. We have tried to make this brochure comprehensive and factual. We reserve the right, however, to make changes at any time, without notice, in prices, colours, materials, equipment, specifications, models and availability. Specifications, dimensions, measurements, ratings and other numbers in this brochure and other printed materials provided at the dealership or affixed to vehicles are approximates based upon design and engineering drawings and prototypes and laboratory tests. Your vehicle may differ due to variations in manufacture and equipment. Since some information may have been adapted since the time of the printing, please check with your GM dealer for complete details. General Motors of Canada Limited reserves the right to lengthen or shorten the model year for any product, for any reason, or to start and end model years at different times.

A WORD ABOUT ASSEMBLY

GM vehicles are equipped with engines and components produced and assembled by different operating units of General Motors, its subsidiaries and suppliers and these engines and components may change or be obtained from different sources from time to time. All such engines and components are approved for use in GM vehicles. Certain equipment ordered may be unavailable at the time of assembly and we suggest that you verify that your vehicle includes the equipment you ordered, or if there are changes, that they are acceptable to you.

TRADEMARKS

The marks appearing in this brochure including, but not limited to: General Motors, GM, the GM emblem, the GM Canada website address, Chevrolet, the Chevrolet emblem, Equinox and their respective logos, emblems, slogans and vehicle model names and body designs; and other marks such as ECOTEC, Multi-Flex, Solar-Ray and StabiliTrak are trademarks of General Motors Corporation and/or General Motors of Canada Limited, its subsidiaries, affiliates or licensors.

GMAC is a registered trademark of the General Motors Acceptance Corporation of Canada, Limited.

OnStar and the OnStar emblem are registered trademarks of the OnStar Corporation.

Radio Data System (RDS) is a registered trademark of the U.S. National Association of Broadcasters.

The XM name and related logos are trademarks of XM Canada, Canadian Satellite Radio Inc.

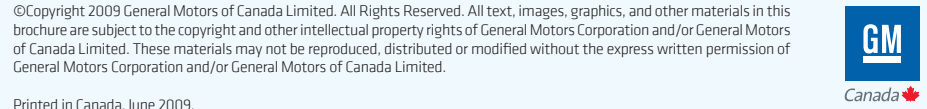
Pioneer is a registered trademark of Pioneer Electronics of Canada, Inc.

Apple and iPod are trademarks of Apple Computer, Inc., registered in the U.S. and other countries.

Bluetooth is a registered trademark of Bluetooth SIG Inc.

COPYRIGHT

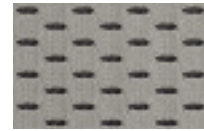
©Copyright 2009 General Motors of Canada Limited. All Rights Reserved. All text, images, graphics, and other materials in this brochure are subject to the copyright and other intellectual property rights of General Motors Corporation and/or General Motors of Canada Limited. These materials may not be reproduced, distributed or modified without the express written permission of General Motors Corporation and/or General Motors of Canada Limited.



Printed in Canada, June 2009.

INTERIOR FABRIC COLOURS

Cloth

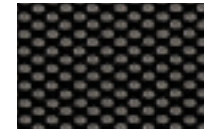


AFI – Light Titanium

Premium Cloth

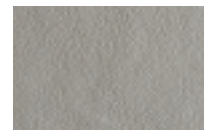


AFK – Light Titanium



AFJ – Jet Black

Perforated Leather Seat Insert



AFM – Light Titanium



AFL – Jet Black



AFN – Brownstone

WHEELS



- A – 17"x7" painted aluminum
- B – 18"x7" machined aluminum
- C – 19"x7" dual-spoke chrome-clad aluminum

EXTERIOR/INTERIOR COLOUR COMPATIBILITY

▼ Exterior	Interior Model ►	Light Titanium** LS/1LT/2LT/LTZ	Jet Black 1LT/2LT/LTZ	Brownstone** 2LT/LTZ
GAN – Silver Ice Metallic		•	•	
GAO – Gold Mist Metallic				•
GAR – Black Granite Metallic*		•	•	•
GBA – Black		•	•	•
GBV – Cyber Gray Metallic		•	•	
GBX – Navy Blue Metallic		•	•	
GCD – Summit White		•	•	•
GHA – Mocha Steel Metallic		•	•	•
GIS – Cardinal Red Metallic		•	•	•

*Available at extra cost. Not available on Equinox LS.

**Includes Jet Black Accents.

EXTERIOR COLOURS



GAN – Silver Ice Metallic



GAO – Gold Mist Metallic



GAR – Black Granite Metallic*



GBA – Black



GBV – Cyber Gray Metallic



GBX – Navy Blue Metallic



GCD – Summit White



GHA – Mocha Steel Metallic



GIS – Cardinal Red Metallic

The exterior colours in this brochure are as close to the actual vehicle production colour as the printing process allows.

For more accurate colour samples, ask your sales consultant to see the dealer showroom vehicle colour display.

*Available at extra cost.