



CHEVROLET

## WE'LL TAKE YOU EXACTLY WHERE YOU WANT TO GO.

You demand more from a vehicle than ever before. Exactly the same can be said of Chevrolet. For starters, you're looking for greener driving choices – Chevrolet offers more models that get better than 7 L/100 km highway fuel efficiency than any other manufacturer. Chevrolet also offers a range of vehicles powered by hybrid technology or alternative fuels. And just around the corner comes the arrival of the revolutionary Chevrolet Volt plug-in Extended-Range Electric Vehicle that can travel up to 64 km purely on electric power. Down the road, there are Hydrogen Fuel Cell Vehicles that point the way to a future of zero-emissions driving.

At Chevrolet, we take pride in more than the quality of our vehicles. We are also proud to be the Official Vehicle Supplier of the Vancouver 2010 Olympic and Paralympic Winter Games and of Canada's Olympic and Paralympic Teams. Chevrolet also demonstrates its enthusiastic support for Canada's athletes and coaches through its Making Dreams Possible and Chevrolet Safe & Fun Hockey initiatives. Share the passion.

For more information about Chevrolet visit [chevrolet.gm.ca](http://chevrolet.gm.ca)



\*Chevrolet is a brand of General Motors of Canada, the Official Vehicle Partner of the Vancouver 2010 Olympic and Paralympic Winter Games. <sup>TM</sup> 2009, VANOC. Used under License.



190-10-B-019E

2010 TAHOE, SUBURBAN & AVALANCHE



2010 TAHOE, SUBURBAN & AVALANCHE



2010 TAHOE, SUBURBAN  
& AVALANCHE



FIVE-STAR FRONTAL  
AND SIDE-IMPACT  
CRASH TEST RATING\*\*

## STRONG AND POWERFUL – THAT’S JUST THE STARTING POINT.

While the rock-solid credentials of the 2010 Chevy Tahoe, Suburban and Avalanche speak for themselves, what makes them stand out even more is their ability to respond to today’s challenges in innovative ways. Take fuel efficiency, for example. Tahoe not only delivers the best V8 fuel consumption ratings in its class,\* it also offers a Hybrid model with the leading-edge Two-Mode Hybrid System. And the standard 5.3L V8 engine on Tahoe, Suburban and Avalanche 1500 models incorporates Active Fuel Management® that shuts down half the engine’s cylinders when power demands are low – in addition to a six-speed automatic transmission that includes two overdrive gears. The safety engineering is equally advanced, earning the highest possible U.S. government frontal and side-impact crash test ratings.\*\* The smart choice in highly capable utility vehicles: The 2010 Chevy Tahoe, Suburban and Avalanche.

For more information about Tahoe, Suburban or Avalanche, visit [chevrolet.gm.ca](http://chevrolet.gm.ca)

\*2010 Tahoe ratings based on GM testing in accordance with approved Transport Canada test methods. Fuel economy ratings for competitors in GM Large SUV segment are based on the latest published competitive information available at time of printing. Your actual fuel consumption may vary.

\*\*Five-star rating is for the driver and front-passenger seating positions in the frontal crash test, and for the front and rear seating positions in the side-impact crash test. U.S. Government star ratings are part of the National Highway Traffic Safety Administration’s (NHTSA’s) New Car Assessment Program (NCAP) ([safercar.gov](http://safercar.gov)).

From left to right: Suburban 1500 LTZ 4x4, shown in Blue Granite Metallic with available equipment; Avalanche 1500 LTZ, shown in Taupe Gray Metallic with available equipment; and Tahoe Hybrid, shown in Summit White.



CHEVROLET

## WITH TWO MODES – IT'S A WIN-WIN.

How can an SUV haul so much, yet use so little fuel? Tahoe Hybrid provides the definitive answer thanks to its ground-breaking Two-Mode Hybrid System. Just how fuel efficient is this rugged Chevy full-size SUV? It gets the same city fuel efficiency ratings as the four-cylinder Toyota Camry.\* That's nothing short of amazing. Yet it holds nothing back when it comes to conventional truck capabilities, starting with the 332-horsepower Vortec 6.0L L8C V8 gasoline-powered engine with Active Fuel Management and Variable Valve Timing. It is teamed up with the electric power of the advanced GM Hybrid Electric Propulsion System to deliver an unbeatable combination. So you get the hauling capacity you need, with a maximum trailering weight that goes all the way up to 2812 kg (6200 lb.). The SUV with a dual nature – the Two-Mode Hybrid System-powered 2010 Tahoe Hybrid.

\* 2010 Tahoe Hybrid ratings based on GM testing in accordance with approved Transport Canada test methods. Fuel economy ratings for competitors are based on the latest published competitive information available at time of printing. Your actual fuel consumption may vary.

### TWO-MODE HYBRID SYSTEM

The advantage of the Two-Mode Hybrid System is that it automatically selects the most effective and efficient blend of power, based on demand. Unlike many other hybrid systems that select their mode of operation based strictly on the rate of airflow into the engine, GM's system uses torque-based inputs to continuously determine the optimal propulsion configuration.

#### MODE 1

When driving at a low speed with a light load, Mode 1 can operate three ways: on electric power alone, on gasoline engine power alone, or with a combination of both. The engine is shut off entirely in stop-and-go traffic, allowing you to drive up to 48 km/h on electric power alone in certain situations, dramatically reducing fuel consumption and emissions.

#### MODE 2

At highway speeds, Mode 2 kicks in. It delivers Vortec V8 gasoline power with Active Fuel Management providing the fuel efficiency benefits of 4-cylinder operation when power demands are low – plus supplemental electric power in such demanding situations as passing, towing a trailer or climbing steep grades.



HYBRID



ETHANOL E85



ACTIVE FUEL  
MANAGEMENT®



HYBRID

Tahoe Hybrid, shown in Summit White.

## THE CHALLENGES ARE FORMIDABLE. SO IS TAHOE.

You're considering Tahoe because you need an SUV that can handle serious loads without breaking a sweat. Tahoe answers the call with prodigious power and a towing capacity that tops out at 3810 kg (8400 lb.).\* The standard Vortec 5.3L V8 engine doesn't only generate 320 horsepower and 335 lb.-ft. of torque, it also delivers best-in-class V8 fuel efficiency with 9.5L/100 km highway and 14.4L/100 km city ratings on 4x4 models.\*\* That's thanks to fuel-saving technologies like Active Fuel Management that shuts down four of eight cylinders when power demands are low, Variable Valve Timing and a six-speed automatic transmission with two overdrive gears. Once you've loaded up your Tahoe, you can take comfort from the fact that all models are equipped with StabiliTrak® and full-function all-speed traction control to enhance driver confidence. Strong, powerful and in control. Chevy Tahoe.

\*When properly equipped, requires available equipment.

\*\* 2010 Tahoe ratings based on GM testing in accordance with approved Transport Canada test methods. Fuel economy ratings for competitors in GM Large SUV segment are based on the latest published competitive information available at time of printing. Your actual fuel consumption may vary.



ETHANOL E85



ACTIVE FUEL  
MANAGEMENT®



Tahoe LTZ, shown in Red Jewel Tintcoat with available equipment.

## NEED EVEN MORE?

Take all of Tahoe's impressive qualifications and then keep going with Chevy Suburban 1500 and the even more capable 2500. Suburban is more than the first name in sport utility vehicles, having invented the category 74 years ago. It's also the last word in SUV hauling capacity with a class-leading 3891 L (137.4 cu. ft.)\* of cargo space and a maximum trailer weight that ranges up to a massive 4355 kg (9600 lb.). The engine lineup is equally noteworthy, with a 352 horsepower Vortec 6.0L V8 with Variable Valve Timing (VVT) standard on Suburban 2500. How do you make Suburban even more rugged? With the available Z71 Off-Road Package that includes features like off-road jounce bumpers, high-pressure gas charged monotube shock absorbers and a skid plate package, in addition to styling enhancements like 18-inch aluminum wheels and chrome tubular assist steps. Even more of what you want and expect from a Chevy full-size SUV: Suburban.

\*Based on 2009 GM Large Utility segment and latest available competitive information available at time of printing. Excludes other GM vehicles. With second-row seats folded and third-row seats removed. Cargo and load capacity limited by weight and distribution.



Suburban 1500 LS 4x4 shown in Black with available equipment.

## GIVES A WHOLE NEW MEANING TO THE TERM LOADED.

While Tahoe and Suburban have a well-earned reputation for their hauling capabilities, their cabins are also nothing short of luxurious. All models feature tri-zone climate controls - manual controls on LS models and automatic on LT and LTZ. Taking the temperature control to a whole other level are LTZ models, which include heated and cooled perforated leather-appointed power 12-way front bucket seats. Not that these vehicles ever lose sight of their mission to deliver exceptional practicality - LTZ models also include power release fold-and-tumble second-row seats with heated outboard seating positions. Just one more way that Tahoe and Suburban handle your cargo, while pampering you.



The rear DVD entertainment system features a large 203 mm diagonal colour LCD monitor, audio/video input jacks, two wireless infrared two-channel headphones, and a remote control unit.



Suburban 1500 LTZ 4x4 interior, shown with standard perforated leather-appointed seating surfaces\* in Light Titanium and available equipment.

\* Third row is vinyl.

## THE CHANGELING OF VEHICLES.

One minute it is a supremely capable Chevy full-size pickup; the next it's a luxuriously appointed SUV. The truck that makes the impossible not only possible, but effortlessly achieved. That's thanks to the General Motors-exclusive Midgate™ that forms the back of the cabin, or folds down to extend the floor of the cargo box to more than eight feet (2494 mm) in length. That's just for openers. Avalanche also features a technologically advanced Vortec 5.3L V8 that produces 320 horsepower and 335 lb.-ft. of torque. It features Active Fuel Management and Variable Valve Timing (VVT) for enhanced fuel efficiency. And with payload capacities that range up to 601 kg (1326 lb.), Avalanche is a truck that's as much at home with a load of lumber in the box as it is with a group of your friends in the cabin. Change is good.



Avalanche LTZ, shown in Taupe Gray Metallic with available equipment.

## ADAPTATION – WITHOUT COMPROMISE.

While Avalanche is adroit at adapting from an SUV to a pickup, it's also adept at providing you and your passengers with an exceptionally high level of comfort. LS models include a power six-way driver's seat, while LT models add power six-way front passenger-seat adjusters. You can elevate your comfort even further with the heated and cooled perforated leather-appointed full-feature power 12-way front bucket seats on LTZ models. They also include power adjustable pedals and automatic dual-zone climate controls. Avalanche is called the Ultimate Utility Vehicle, but you can see that a high level of utility is complemented by an exceptionally well-appointed cabin – without compromise.



Avalanche LTZ 4x4 interior, shown with available leather-appointed seating surfaces in Light Cashmere and available equipment.



## THE SUV AND THE PICKUP – TOGETHER AT LAST.

If you still think of the SUV and pickup as two totally different animals, may we introduce you to a unique breed. Avalanche employs its Convert-A-Cab™ system to make this remarkable transformation quickly and without tools. The centrepiece is the Midgate. When folded down it creates a cargo box that can carry 4'x 8' sheets of building material. And you can enclose the cargo box with the rigid three-piece cargo cover to keep the box dry and secure. In fact, the box includes a series of features that make loading, transporting and unloading objects that much easier. You see, once our engineers figured out how to convert an SUV into a pickup, the rest was easy.



### 1. THREE-PIECE RIGID COMPOSITE CARGO COVER

The lockable, 3-piece cargo cover creates trunk-like security and weather protection. The cover can be easily removed to further increase cargo capacity.

### 2. CARGO LIGHT

A light in the cargo box increases visibility when loading and unloading.

### 3. LOCKABLE TAILGATE

The 3-piece cargo cover and tailgate lock together, creating protected and secure storage. The tailgate can be locked and unlocked by the standard remote keyless entry system.

### 4. RUBBER MAT BEDLINER

A rubber mat bedliner helps keep your cargo in position when you're driving. The mat is also simple to remove, making it easy to clean.

### 5. LOCKABLE TOP-BOX STORAGE

Lockable top-box storage compartments on each side of the cargo box provide up to 48 L (1.7 cu. ft.) of storage capacity – ideal for an emergency kit and other small items.

### 6. GRAB HANDLES

Access to the cargo box is enhanced by integrated grab handles. The handles also serve as tie-down anchors to help secure cargo.

### CARGO COVER RETAINING STRAPS

Retaining straps keep the removable 3-piece cargo cover securely in place when being transported in the cargo box.

The Midgate is located behind the split-bench rear seat. It is shown here in the upright position.



Folding down the rear seat increases cargo capacity. The rear window can be removed and stowed inside the Midgate.



Lowering the Midgate extends the cargo bed. The cargo is both dry and secure, thanks to the rigid 3-piece cargo cover.



To accommodate oversized cargo simply lower the tailgate, stow the rear window and remove the cargo cover.



## THEY HAVE THEIR OWN IN-HOUSE AUDIO-VISUAL DEPARTMENT.

It's not just how much you can bring along with you in Tahoe, Suburban and Avalanche. It's also about making the journey something to look forward to. All sound systems include a CD player with MP3 playback, plus an auxiliary audio input jack – LTZ models add a DVD player slot and a USB port. That means you can listen to the music of your choice in the format of your choosing. If you want even greater selection, choose one of 130 channels of XM Satellite Radio™.\* If enhanced sound quality is your priority, a Bose® premium sound system with a subwoofer is standard on LTZ models. The information and communications technologies are also extensive – Bluetooth® wireless mobile phone connectivity is standard; a DVD Navigation System is available. Enjoy.

\*Available in 10 Canadian provinces and the 48 contiguous United States. Subscription sold separately after trial period.

An available Rearview Camera System operates when the vehicle is in Reverse. It displays obstacles behind the vehicle on the interior rear-view mirror or the available navigation system monitor if so equipped.



LTZ 4x4 instrument panel, shown with available equipment.

## THE INPUT IS AS IMPORTANT AS THE OUTPUT.

The more you load into your truck, the greater the demands you place on its engine. And with enormous Gross Vehicle Weight Ratings, like the 3901 kg (8600 lb.) rating for Suburban 2500 – the substantial output of the Vortec V8 engines in Tahoe, Suburban and Avalanche are put to very good use. The lineup starts with the Vortec 5.3L V8 and includes the Suburban 2500's standard 352 horsepower Vortec 6.0L V8. These engines are designed not just with cargo, but another kind of input in mind, namely fuel economy. Not only do the Vortec engines squeeze more power out of less fuel, thanks to technologies like Active Fuel Management and Variable Valve Timing, they are also FlexFuel capable, meaning they can run on E85 ethanol. Vortec V8 power – for a smart balance of input and output.



### ACTIVE FUEL MANAGEMENT

The Active Fuel Management technology increases fuel efficiency by shutting down four cylinders under low-demand operating conditions, such as when cruising at highway speeds or on level stretches of road. When power demands increase, such as during acceleration or driving uphill, the engine switches back to eight-cylinder operation. Cylinder deactivation and reactivation are executed with seamless precision.



ETHANOL E85



ACTIVE FUEL MANAGEMENT®

### MODEL SELECTOR

Model	Drive	Standard GVWR* – kg (lb.)	Maximum Payload** – kg (lb.)	Max. Gross Trailer Weight† – kg (lb.)
TAHOE	2WD	3221 (7100)	805 (1774)	3810 (8400)
	4x4	3311 (7300)	773 (1705)	3720 (8200)
TAHOE HYBRID	2WD	3221 (7100)	670 (1476)	2812 (6200)
	4x4	3311 (7300)	632 (1393)	2722 (6000)
1500 SUBURBAN	2WD	3266 (7200)	694 (1530)	3674 (8100)
	4x4	3357 (7400)	709 (1563)	3583 (7900)
2500 SUBURBAN	2WD	3901 (8600)	1102 (2429)	4355 (9600)
	4x4	3901 (8600)	981 (2162)	4218 (9300)
AVALANCHE	2WD	3175 (7000)	607 (1338)	3674 (8100)
	4x4	3266 (7200)	600 (1322)	3538 (7800)

\*Gross Vehicle Weight Rating (GVWR) includes vehicle, passengers, equipment and cargo.

\*\*Payloads are approximate and will change with the addition of optional or aftermarket equipment. Consult your dealer or equipment supplier for details.

†Trailer Weight (also called Trailer Towing Capacity) is the weight of a trailer, its load or contents plus any other weight added to the tow vehicle. Many trailer towing applications require additional optional equipment. See your dealer or refer to the vehicle Owner's Manual for details. For more information on trailer towing go to gm.ca



Avalanche LT 4x4 with Z71 Off-Road Package, shown in Sheer Silver Metallic.

## INFORM. CONTROL. PROTECT.

The keys to safety are numerous. First, there is seeing an object before it becomes an obstacle – a process made easier by the available Rearview Camera System and the Side Blind Zone Alert that’s available on Tahoe and Suburban 1500. Once you know what you are trying to avoid, driver control takes on paramount importance. Tahoe, Suburban and Avalanche answer with the standard StabiliTrak electronic stability control system, in addition to full-function all-speed traction control and ABS. As for the protection, it’s second to none, earning the highest possible U.S. government frontal and side crash test ratings – five stars.\* You also have the added reassurance of OnStar®\*\* – including Advanced Automatic Collision Notification. Sophisticated technology that advances safety.

\*Five-star safety rating is for the driver and front passenger seating positions in the frontal crash tests, and for the front and rear seating positions in the side-impact crash test. U.S. Government ratings are part of the National Highway Traffic Safety Administration’s (NHTSA’s) New Car Assessment Program (NCAP) (safercar.gov).

\*\* OnStar services require vehicle electrical system (including battery), wireless service and GPS satellite signals to be available and operating for features to function properly. OnStar acts as a link to existing emergency service providers. Subscription Service Agreement required. Ability to locate stolen vehicles varies with conditions. Call 1-888-4ONSTAR (1-888-466-7827) or visit onstar.ca for OnStar’s Terms and Conditions, Privacy Statement and details and system limitations.

### HEAD CURTAIN AIR BAGS

Head curtain side-impact air bags<sup>†</sup> help reduce the risk of injuries to outboard occupants in certain side impacts, providing enhanced protection for all outboard seating rows. When deployed, the air bags remain inflated in the unlikely event of a rollover to help reduce the risk of ejection. Seat-mounted side-impact air bag restraints provide the driver and right front passenger with added thorax and pelvic protection. Standard on all Tahoe, Suburban and Avalanche models.

### ULTRASONIC REAR PARKING ASSIST

When in Reverse, the ultrasonic rear parking assist detects obstacles in your path up to 2.5 m (8 ft.) behind the vehicle. The system then activates an audio warning. Standard on all LTZ models, Tahoe and Suburban LT models and Tahoe Hybrid; available on other models.

### ONSTAR SYSTEM

OnStar\*\* with one year of the Safe & Sound Plan is standard on all LS models. LT and LTZ models feature OnStar and one year of the Directions & Connections Plan with Turn-by-Turn Navigation.<sup>††</sup> Also included is OnStar’s Advanced Automatic Collision Notification that helps provide assistance in an emergency.

### STABILITRAK ELECTRONIC STABILITY CONTROL SYSTEM

Stability control systems have proven to reduce the risk of a fatal single-vehicle crash by a remarkable 63 percent.<sup>‡</sup> What makes StabiliTrak so effective? It continuously monitors steering angle, wheel speeds, brake pressure and lateral acceleration. If the system detects a lateral skid, it intervenes automatically by adjusting brake pressure and engine power to help return your vehicle to its intended driving line. Proactive Roll Avoidance is included with StabiliTrak to reduce a vehicle’s tendency to roll over in a panic situation. Standard on all models.

### REMOTE VEHICLE STARTER SYSTEM

The standard, factory-installed remote vehicle starter system enables you to start the engine from a distance of up to 60 m (200 ft.), simply by pressing a button on your key fob. The system is integrated with the factory-installed security system and is standard on all Tahoe, Suburban and Avalanche models.

### SIDE BLIND ZONE ALERT

Blind spots exist on both sides of a vehicle. Side Blind Zone Alert uses radar technology to detect a vehicle entering a blind spot on either side of the vehicle. It then triggers an LED symbol alert in the appropriate exterior rear-view mirror. Available on Tahoe and Suburban 1500 LTZ models.

### AUTOTRAC 4x4 SYSTEM

A single-speed Autotrac™ active transfer case is standard on all Tahoe, Suburban 1500 and Avalanche 4x4s. It can adjust to changing road conditions automatically in the Auto 4WD mode. You can also select traditional 2HI, 4HI and Neutral modes using a convenient rotary control.

- AUTO 4WD detects rear-wheel slippage and automatically engages 4WD as road conditions dictate.
- 2HI is the 2WD setting for most driving conditions and optimal fuel efficiency.
- 4HI is a full-time 4WD mode for snow, ice and most off-road conditions.
- Neutral is also provided, permitting flat towing.
- A 2-speed Autotrac is standard on Tahoe Hybrid and Suburban 2500 models and is available in lieu of the single-speed transfer case on the other 4x4 models. It adds a 4LO setting for extreme conditions such as steep hills, deep sand, mud or snow. This 2-speed unit is included with the Heavy-duty Cooling Package or the Z71 Off-Road Package.

### AUTOMATIC LOCKING REAR DIFFERENTIAL

The standard automatic locking rear differential helps get your vehicle moving when one rear wheel loses traction, by directing power to both rear wheels. The benefits include:

- Improved performance on and off road
- Full lockup, providing maximum drive power to both rear wheels
- Operates automatically, without the need for driver intervention.

### QUIET RIDE

The mounting points for the axle, suspension and engine were designed to reduce noise and vibration. A flex coupling between the exhaust system and engine exhaust manifolds helps reduce noise and vibration produced by the exhaust system.

### RACK-AND-PINION STEERING

The steering components and front frame sections were engineered to deliver precise response to driver input, except Suburban 2500.

### STIFF FRAME AND WIDER TRACK

Impressive torsional rigidity was achieved through the use of strong hydroformed rails in the front frame section. This stiffness, in combination with wide front and rear track widths, provides excellent ride stability.

### SUSPENSION

The ride and agile handling of these Chevy full-size utility vehicles are the products of a coil-over-shock front suspension design that reduces vibration and is tuned precisely for optimum performance. Suburban 2500 models feature an independent front suspension with torsion bars combined with rear multi-stage leaf springs to optimize trailering capacity.

<sup>†</sup>A NOTE ON CHILD SAFETY: Always use safety belts and proper child restraints, even in vehicles equipped with air bags.

<sup>††</sup>Turn-by-Turn Navigation not available in certain areas. Visit onstar.ca for coverage map.

<sup>‡</sup>According to information published by the U.S. Department of Transportation’s National Highway Traffic Safety Administration, July 2007.



## HOW TO TRANSFORM YOUR TRUCK INTO A ONE-OF-A-KIND.

If you believe your vehicle represents an important expression of your individuality, take its style and functionality to the next level with the addition of Chevrolet Accessories. They were part of the development process of Tahoe, Suburban and Avalanche, ensuring that they offer the same quality of fit, finish and function as the rest of the vehicle. They are backed by the 3-year/60,000 km New Vehicle Limited Warranty\* and can be included in your finance agreement through GMAC. Ask your dealer for a complete list of the Chevrolet Accessories available for Tahoe, Suburban and Avalanche, or visit gm.ca

\*Whichever comes first, when permanently installed by the dealer at the time you purchased your new vehicle, or for the remainder of the New Vehicle Limited Warranty if installed after the time of your vehicle purchase, but no less than 12 months.

Some Chevrolet Accessories available for Tahoe and Suburban include:

- Grille inserts
- Chrome tubular assist steps
- Chrome fuel door
- Brush grille guard
- Hard cargo carrier
- Side-window weather deflectors
- Rear fascia closeout
- Hitch-mounted bike/ski carrier
- Chrome door handles
- Premium all-season floor mats
- Step shield and door sill plates
- 20-in. and 22-in. wheels
- Overhead portable DVD player
- Tail light guards
- Exterior rear-view mirror covers.



Some Chevrolet Accessories available for Avalanche include:

- Extended range remote
- Grille inserts
- Tubular assist steps
- Chrome fuel door
- Brush grille guard
- Side-window weather deflectors
- Box extender
- Moulded hood protector
- Premium all-season floor mats and cargo mats
- Step shield
- 20-in. and 22-in. wheels
- Recovery hooks
- Performance air intake
- Moulded splash guards.



**ACCESSORIES**



## TAHOE AND SUBURBAN MODEL OVERVIEW

### TAHOE & SUBURBAN LS

Tahoe and Suburban LS include these standard features:

- Vortec 5.3L V8 engine with Active Fuel Management, Variable Valve Timing and FlexFuel capability (Tahoe and Suburban 1500 models)
- Vortec 6.0L V8 with Variable Valve Timing (VVT) and FlexFuel capability (Suburban 2500)
- GM Oil Life Monitoring System
- 6-speed automatic transmission with Driver Shift Control and Tow/Haul mode
- 4-wheel vented disc brakes with 4-wheel ABS and Dynamic Rear Proportioning (DRP)
- StabiliTrak electronic stability control system with Proactive Roll Avoidance
- Autotrac single-speed electronic transfer case (4x4 models)
- Locking rear differential
- 17-in. aluminum smooth 5-spoke wheels (Tahoe and Suburban 1500 models)
- 17-in. bright machined aluminum wheels (Suburban 2500 models)
- Tire pressure monitoring system
- Power adjustable, heated exterior rear-view mirrors
- Assist steps
- Luggage rack side rails
- Liftgate with liftglass
- Heavy-duty Trailing Equipment
- Remote vehicle starter system
- Remote keyless entry system
- Dual-stage frontal air bags with Passenger Sensing System and passenger-side air bag suppression system
- Head curtain side-impact air bags with rollover sensor
- Seat-mounted side-impact air bags for driver and right front passenger
- Seating for up to 9, with 40/20/40 split-folding front-row bench seat, 60/40 split-folding second-row bench, and 50/50 third-row bench
- Power 6-way driver's seat adjuster
- Tri-zone manual climate controls and rear auxiliary heater
- Driver Information Centre (DIC)
- Power windows with driver's express-down feature
- Cruise control
- Tilt adjustable steering column
- CD player with MP3 playback, USB port and auxiliary audio input jack
- XM Satellite Radio
- Bluetooth mobile phone connectivity
- OnStar with 1 year of the Safe & Sound Plan.

### TAHOE & SUBURBAN 1LT

1LT models enhance LS features with:

- Halogen fog lights
- Roof rack cross bars
- Ultrasonic rear parking assist
- Leather-appointed front bucket seats
- Power 6-way front-passenger seat adjuster
- Automatic tri-zone climate controls
- Power adjustable pedals
- Bose premium sound system with subwoofer
- Centre floor console with 12 volt power outlet
- Rear-seat audio controls
- Universal home remote
- OnStar with 1 year of the Directions & Connections Plan with Turn-by-Turn Navigation.

### TAHOE & SUBURBAN 2LT

2LT models enhance 1LT features with:

- Heated, leather-appointed front bucket seats with power 8-way driver and front-passenger adjusters with 2-way power lumbar control and driver-side 2-position memory function
- Heated 2nd-row outboard seats
- Auto-dimming interior rear-view mirror
- Heated, full-feature power exterior rear-view mirrors with colour-keyed caps.

### TAHOE & SUBURBAN LTZ 1500 4x4

LTZ models enhance 2LT features with:

- AutoRide™ suspension
- 20-in. polished aluminum wheels
- Bright chrome grille insert
- Power sunroof
- Power rear liftgate
- Heated, full-feature power exterior rear-view mirrors with chrome caps
- Heated and cooled perforated leather-appointed power 12-way front bucket seats
- Heated, power release, fold-and-tumble second-row bucket seats
- Bose Centre Channel sound system with subwoofer
- CD and CD/DVD player slots
- Rear Entertainment System with DVD player, remote control, overhead display and 2 sets of wireless headphones.

### TAHOE HYBRID LT

Tahoe Hybrid includes many of the Tahoe 1LT features, plus:

- Vortec 6.0L L1VC V8 with VVT and Active Fuel Management
- GM Hybrid Electric Propulsion System
- Regenerative braking
- Unique Hybrid aero design front fascia with fog lights
- 18-in. low-mass aluminum wheels
- Low-mass aluminum liftgate
- Rearview Camera System
- Tire inflator kit in place of spare tire wheel assembly
- Heated leather-appointed full-feature front bucket seats with power 10-way adjusters and 2-position memory controls
- Integrated DVD Navigation System.



## AVALANCHE MODEL OVERVIEW

### AVALANCHE LS

Avalanche LS includes these standard features:

- Vortec 5.3L V8 with Active Fuel Management, Variable Valve Timing and FlexFuel capability
- GM Oil Life Monitoring System
- 6-speed automatic transmission with Driver Shift Control and Tow/Haul mode
- 4-wheel vented disc brakes with 4-wheel ABS and Dynamic Rear Proportioning (DRP)
- StabiliTrak electronic stability control system with Proactive Roll Avoidance
- Autotrac single-speed electronic transfer case (4x4 models)
- 17-in. aluminum smooth 5-spoke wheels
- Tire pressure monitoring system
- Power adjustable, heated exterior rear-view mirrors
- Assist steps
- Front recovery hooks
- Heavy-duty Trailing Equipment
- Remote vehicle starter system
- Remote keyless entry system
- Dual-stage frontal air bags with Passenger Sensing System and passenger-side air bag suppression system
- Head curtain side-impact air bags with rollover sensor
- Seat-mounted side-impact air bags for driver and right front passenger
- Seating for up to 6, with 40/20/40 split-folding front bench with fold-down centre armrest
- Power 6-way driver seat adjuster
- Manual dual-zone climate controls
- Driver Information Centre (DIC)
- Power windows with driver's express-down feature
- Cruise control
- Tilt adjustable steering column
- CD player with MP3 playback, USB port and auxiliary audio input jack
- XM Satellite Radio
- Bluetooth mobile phone connectivity
- OnStar with 1 year of the Safe & Sound Plan.

### AVALANCHE 1LT

Avalanche 1LT enhances LS features with:

- Premium cloth front bucket seats with centre console
- Power 6-way front-passenger seat adjuster
- Fog lights
- Auto-dimming interior rear-view mirror
- 2nd-row audio controls and earphone jacks
- OnStar with 1 year of the Directions & Connections Plan with Turn-By-Turn Navigation.

### AVALANCHE 2LT

Avalanche 2LT enhances 1LT features with:

- Leather-appointed front bucket seats
- Automatic dual-zone climate controls
- Power adjustable pedals
- Ultrasonic rear parking assist
- Universal home remote.

### AVALANCHE 3LT

Avalanche 3LT enhances 2LT features with:

- Heated, full-feature leather-appointed power 10-way front bucket seats with 2-position memory feature
- Auto-dimming interior rear-view mirror
- Heated, full-feature power exterior rear-view mirrors
- Bose 7-speaker premium sound system with subwoofer.

### AVALANCHE LTZ

Avalanche LTZ enhances 3LT features with:

- AutoRide suspension
- 20-in. polished aluminum wheels
- Chrome grille insert with chrome surround
- Luggage rack – black side rails and cross bars
- Heated and cooled perforated leather-appointed power 12-way front bucket seats
- CD and CD/DVD player slots
- Rear Entertainment System with DVD player, remote control, overhead display and 2 sets of wireless headphones.



## 2010 TAHOE, SUBURBAN & AVALANCHE STANDARD & OPTIONAL FEATURES

	LS	LT	LTZ	TAHOE HYBRID LT
<b>SAFETY AND SECURITY</b>				
<b>Air bags</b> – dual-stage, driver and front-passenger, frontal with Passenger Sensing System and passenger-side air bag suppression system with status indicator in overhead console – except Suburban 2500	S	S	S	S
<b>Air bags</b> – single stage, driver and front-passenger, frontal with On/Off switch – Suburban 2500	S	S	–	–
<b>Air bags</b> – front-to-rear, head curtain side-impact with rollover sensor (includes third row on Tahoe and Suburban when equipped with 3rd-row seating)	S	S	S	S
<b>Air bags</b> – seat mounted side-impact, driver and right front passenger for thorax and pelvic protection	S	S	S	S
<b>Door locks</b> – power, programmable with lock-out protection	S	S	S	S
<b>Headlights</b> – dual halogen with automatic light control and flash-to-pass features	S	S	S	S
<b>Keyless entry system</b> – remote, includes 2 extended range transmitters	S	S	S	S
<b>OnStar In-Vehicle Communications and Assistance Service</b> – includes one-year Safe & Sound Plan* – includes one-year Directions & Connections Plan with Turn-by-Turn Navigation†	S –	– S	– S	– S
<b>Safety restraints</b> – LATCH (Lower Anchors and top Tethers for Children)	S	S	S	S
<b>Safety restraints</b> – 3-point belts for all seating positions (when equipped with front bucket seats; lap belt for centre position with front split-bench seat)	S	S	S	S
<b>StabiliTrak</b> – electronic stability control system with Proactive Roll Avoidance	S	S	S	S
<b>Theft-deterrent system</b> – electronic immobilizer and vehicle content theft alarm	S	S	S	S
<b>Traction control</b> – electronic, full-function, all-speed	S	S	S	S
<b>Ultrasonic rear parking assist</b> – rear obstacle detection system with audible warning	0 <sup>1</sup>	0 <sup>1,2</sup>	S	S

	LS	LT	LTZ	TAHOE HYBRID LT
<b>MECHANICAL</b>				
<b>Air cleaner</b> – high capacity	S	S	S	–
<b>Brakes</b> – power-assisted, 4-wheel vented disc with 4-wheel anti-lock braking system (ABS) and dynamic rear proportioning (DRP)	S	S	S	S
<b>Brakes</b> – regenerative braking system, recharges 300-volt Hybrid battery pack	–	–	–	S
<b>Engine</b> – FlexFuel Vortec 5.3L V8 with Active Fuel Management and Variable Valve Timing, capable of running on up to 85% ethanol (E85) Horsepower – 320 @ 5200 rpm; Torque – 340 lb.-ft. @4200 rpm – Tahoe, Suburban 1500 and Avalanche	S	S	S	–
<b>Engine</b> – FlexFuel Vortec 6.0L V8 with Variable Valve Timing (VVT), capable of running on up to 85% ethanol (E85) Horsepower – 352 @ 5400 rpm; Torque – 382 lb.-ft. @4200 rpm – Suburban 2500	S	S	–	–

	LS	LT	LTZ	TAHOE HYBRID LT
<b>MECHANICAL (CONTINUED)</b>				
<b>Engine</b> – FlexFuel Vortec 6.0L LIVC V8 with Variable Valve Timing (VVT) and Active Fuel Management (AFM), Hybrid electric propulsion system with 300-volt Hybrid battery pack and high voltage management module Horsepower – 332 @ 5100 rpm; Torque – 367 lb.-ft. @ 4100 rpm	–	–	–	S
<b>Engine</b> – block heater	0	0	0	0
<b>Locking differential</b> – rear	S	S	S	S
<b>Steering</b> – power, rack-and-pinion – Tahoe, Suburban 1500 and Avalanche	S	S	S	–
<b>Steering</b> – electric power	–	–	–	S
<b>Steering</b> – power, recirculating ball – Suburban 2500	S	S	–	–
<b>Suspension</b> – Premium smooth ride – Tahoe, Suburban 1500 and Avalanche	S	S	–	S
<b>Suspension</b> – AutoRide, road-sensing, electronically controlled shock absorbers with air-assisted automatic rear level control	–	0 <sup>3</sup>	S	–
<b>Suspension</b> – heavy-duty handling and trailering with front independent torsion bars and rear multi-stage leaf springs – Suburban 2500	S	S	–	–
<b>Trailer electric brake controller</b> – standard on Suburban 2500 <sup>4</sup>	0	0	0	–
<b>Trailer Equipment</b> – heavy-duty, includes weight-distributing hitch platform with 51 mm (2 in.) hitch receiver, 7-pin sealed wiring connector and provision for an aftermarket trailer brake controller	S	S	S	S
<b>Transfer case</b> – 2-speed, Autotrac with electronic rotary control – Tahoe Hybrid 4x4 and Suburban 2500 4x4 models	S	S	–	S
<b>Transfer case</b> – single-speed Autotrac, with electronic rotary control – Avalanche, Tahoe and Suburban 1500 4x4 models	S	S	S	–
<b>Transfer case</b> – 2-speed Autotrac, with electronic rotary control – Avalanche, Tahoe and Suburban 1500 4x4 models (included with available Trailering Heavy-Duty Cooling Package or Z71 Off-Road Package)	0	0	0	–
<b>Transmission</b> – 6-speed electronically controlled automatic with two overdrive gears, Tow/Haul mode and driver shift control (model 6L80 used on 1500 models; heavy-duty model 6L90 used on Suburban 2500)	S	S	S	–
<b>Transmission</b> – 4-speed automatic integrated with Hybrid variable electric propulsion system	–	–	–	S
<b>Transmission/Hybrid electronics cooler</b>	–	–	–	S
<b>Snowplow Prep Package</b> – Suburban 2500 4x4 models only	0	0	–	–
<b>Vehicle starter system</b> – remote	S	S	S	S
<b>Trailer Heavy-Duty Cooling Package</b> – includes external transmission and engine oil coolers standard on Suburban 2500 models)	0	0	0	–
<b>Z71 Off-Road Package</b> – includes off-road jounce bumpers, gas-charged monotube shock absorbers, specially tuned springs, 2-speed Autotrac on 4x4 models, 18" x 8" Z71 specific aluminum wheels (4), P265/65R18 On-Off road tires (4), two front recovery hooks (std. Avalanche), skid plate package, colour-keyed wheel flares, Z71 specific front fascia with fog lights, chrome grille insert and chrome tubular assist steps, Z71 specific gauge cluster and brushed metal appearance interior accents (Not available on Tahoe Hybrid or Suburban 2500)	–	0	–	–

	LS	LT	LTZ	TAHOE HYBRID LT
<b>EXTERIOR</b>				
<b>Assist steps</b> – black	S	S <sup>6</sup>	S	S
<b>Assist steps</b> – power retractable	–	–	0	–
<b>Bumpers</b> – front, colour-keyed fascia	S	S	0	–
<b>Bumpers</b> – front and rear, colour-keyed fascia with unique Hybrid aero design	–	–	–	S
<b>Bumper</b> – rear, colour-keyed fascia – Tahoe and Suburban	S	S	S	–
<b>Bumper</b> – rear, colour-keyed steel with step pad – Avalanche	S	S	–	–
<b>Bumper</b> – rear, colour-keyed fascia with step pad – Avalanche	0 <sup>6</sup>	0 <sup>6</sup>	S	–
<b>Cargo box</b> – 1.6 m (5'3") long or 2.8 m (8'2") long by 1.27 m (4'2") wide with Midgate folded down – Avalanche	S	S	S	–
<b>Cargo cover</b> – 3-piece rigid composite, stowable – Avalanche	S	S	S	–
<b>Cargo mat</b> – black, heavy-duty rubber – Avalanche	S	S	S	–
<b>Door handles</b> – black	S	–	–	–
<b>Door handles</b> – colour-keyed	–	S	–	S
<b>Door handles</b> – chrome	–	–	S	–
<b>Fog lights</b> – halogen	–	S	S	–
<b>Glass</b> – Solar-Ray <sup>®</sup> tinted, deep-tinted on all windows behind front doors	S	S	S	S
<b>Grille</b> – chrome surround (Hybrid features unique design for increased cooling)	S	S	S	S
<b>Grille</b> – chrome mesh insert	–	–	S	–
<b>Liftgate</b> – includes liftglass – Tahoe and Suburban	S	S	–	–
<b>Liftgate</b> – power, electric open and close with keyless remote control – Tahoe and Suburban	–	0	S	–
<b>Liftgate</b> – low mass aluminum with fixed window glass	–	–	–	S
<b>Midgate</b> – foldable door between cargo box and cab with storage pocket for removable rear glass – Avalanche	S	S	S	–
<b>Mirrors</b> – manual foldaway power adjustable, heated (black on LS and colour-keyed on LT)	S	S	–	–
<b>Mirrors</b> – power foldaway, full-feature power adjustable, heated, driver-side auto-dimming feature, side-entry illumination and integrated turn signals (chrome on LTZ, colour-keyed on LT and Hybrid)	–	0	S	S
<b>Mirrors</b> – deluxe wide load, manual extending and folding, heated, integrated turn signals and lower convex spotter (Suburban 2500)	0	0	–	–
<b>Mouldings</b> – bodyside, colour-keyed	S	S	–	S
<b>Mouldings</b> – bodyside, colour-keyed with chrome insert	–	–	S	–
<b>Rearview Camera System</b> – reverse assist for parking or trailer towing (includes interior rear-view mirror with display or displayed on navigation system screen with up-level sound system and DVD-based navigation)	–	0	0	S

	LS	LT	LTZ	TAHOE HYBRID LT
<b>EXTERIOR (CONTINUED)</b>				
<b>Recovery hooks</b> – two, front – Tahoe and Suburban 4x4 models <sup>7</sup>	S	S	S	–
<b>Recovery hooks</b> – two, front – Avalanche	S	S	S	–
<b>Roof rack</b> – side rails – Tahoe and Suburban	S	S	S	–
<b>Roof rack</b> – cross bars – Tahoe and Suburban	0	S	S	–
<b>Roof rack</b> – side rails and cross bars – Avalanche	0	0	S	–
<b>Side blind zone alert</b> – Tahoe and Suburban 1500	–	–	0	–
<b>Skid plates</b> – includes aluminum front underbody shield from front fascia to first cross member, plus oil pan, front differential and transfer case shields (included with Z71 Off-Road Package)	0 <sup>8</sup>	0 <sup>8</sup>	0 <sup>8</sup>	–
<b>Sunroof</b> – power, sliding glass panel and tilt with express-open and close	–	0 <sup>9</sup>	S <sup>9,10</sup>	0
<b>Tire inflator kit</b>	–	–	–	S
<b>Tires</b> – P265/70R17 all-season** – Tahoe, Suburban 1500 and Avalanche	S	S	–	–
<b>Tires</b> – P265/65R18 all-season**	–	–	–	S
<b>Tires</b> – P275/55R20 all-season** – Tahoe, Suburban 1500 and Avalanche	–	0	S	–
<b>Tires</b> – P265/65R18 On-Off road – Tahoe, Suburban 1500 and Avalanche with Z71 Off-Road Package	–	0	–	–
<b>Tires</b> – LT265/70R17 All-Terrain – Suburban 2500	S	S	–	–
<b>Top-box storage</b> – integrated, lockable – Avalanche	S	S	S	–

S – Standard. 0 – Optional individually or in combination with other optional equipment. Note: The trim features indicated reflect only a portion of the total content of each trim level. See your sales consultant for complete listings, current availability and compatibility.

1 – Replaces colour-keyed steel rear bumper with colour-keyed rear fascia on Avalanche. Available individually or with Driver Convenience Package.

2 – Standard on Tahoe and Suburban LT.

3 – Not available on Suburban 2500 models.

4 – Requires Trailering Heavy-Duty Cooling Package.

5 – Except with Z71 Off-Road Package.

6 – Colour-keyed rear bumper fascia included with available ultrasonic rear parking assist.

7 – Standard on all 2500 models.

8 – Available with Z71 Off-Road Package on Avalanche. Available individually or with Z71 Off-Road Package on Tahoe and Suburban 4x4 models (except Tahoe LTZ).

9 – Includes universal home remote on Avalanche.

10 – Available on Avalanche.

\* OnStar services require vehicle electrical system (including battery), wireless service and GPS satellite signals to be available and operating for features to function properly. OnStar acts as a link to existing emergency service providers. Subscription Service Agreement required. Ability to locate stolen vehicles varies with conditions. Call 1-888-4-ONSTAR (1-888-466-7827) or visit onstar.ca for OnStar's Terms and Conditions, Privacy Statement and details and system limitations.

\*\* All-season tires may not satisfy winter tire requirements in all regions of the country. Tires specifically designed for severe winter conditions and marked with the "winter tire" symbol  may be required during certain months or in certain regions. Contact your Provincial, Municipal or local road authority for information regarding which tires are required in your particular area.

‡ Turn-by-Turn Navigation not available in certain areas. Visit onstar.ca for coverage map.

† Available in all 10 Canadian provinces and the 48 contiguous United States. Subscription sold separately after trial period.

## 2010 TAHOE, SUBURBAN & AVALANCHE STANDARD & OPTIONAL FEATURES (CONTINUED)

EXTERIOR (CONTINUED)	LS	LT	LTZ	TAHOE HYBRID LT
<b>Wheels</b> – 17" x 7.5" aluminum, smooth 5-spoke (P46) – Tahoe, Suburban 1500 and Avalanche (A)	S	S	–	–
<b>Wheels</b> –18" x 8.0" Z71-specific aluminum (N87)– Tahoe, Suburban 1500 and Avalanche with Z71 Off-Road Package (B)	–	0	–	–
<b>Wheels</b> –18" x 8.0" low mass aluminum (P71) – Tahoe Hybrid (C)	–	–	–	S
<b>Wheels</b> –17" x 7.5" bright machined aluminum with 8-lug design (P25), centre caps and 17" full-size spare – Suburban 2500 (D)	S	S	–	–
<b>Wheels</b> – full-size 17" spare under rear frame, lockable – Tahoe, Suburban 1500 and Avalanche	S	S	S	–
<b>Wheel and Tire Package</b> – includes 20" x 8.5" polished aluminum wheels (RCS) and P275/55R20 all-season** tires – Tahoe, Suburban 1500 and Avalanche (E)	–	0 <sup>9</sup>	S	–
<b>Wheel and Tire Package</b> – includes 20" x 8.5" chrome-clad aluminum wheels (S80) and P275/55R20 all-season** tires – Tahoe, Suburban 1500 and Avalanche (F)	–	–	0	–
<b>Windshield wipers</b> – variable delay (intermittent), flat-blade, with wet-arm washers	S	S	S	S
<b>Wiper/washer</b> – rear-window with fixed delay – Tahoe and Suburban	S	S	S	S
<b>Driver Convenience Package (PDE)</b> – includes ultrasonic rear parking assist and power adjustable pedals – Tahoe and Suburban	0	S	S	S
<b>Driver Convenience Package (PDD)</b> – includes ultrasonic rear parking assist, power adjustable pedals, Rearview Camera System with display on interior rear-view mirror and rear colour-keyed bumper fascia – Avalanche	0	0	S	–
<b>White Diamond Package</b> – includes polished exhaust tip – Tahoe and Suburban 1500	–	–	0 <sup>11</sup>	–

### INTERIOR

<b>Air conditioning</b> – tri-zone, manual climate controls with individual settings for driver, front and rear passengers <sup>12</sup> – Tahoe and Suburban	S	–	–	–
<b>Air conditioning</b> – tri-zone, automatic climate controls with individual settings for driver, front and rear passengers <sup>12</sup> – Tahoe and Suburban	–	S	S	S
<b>Air conditioning</b> – dual-zone, manual climate controls with individual settings for driver and front-passenger – Avalanche	S	S	–	–
<b>Air conditioning</b> – dual-zone, automatic climate controls with individual settings for driver and front-passenger – Avalanche	–	0	S	–
<b>Cargo compartment mat</b> – rear (Suburban)	–	–	S	–
<b>Console</b> – centre floor, includes storage bin, dual cupholders in front and rear, 2 power outlets, rear-seat audio controls – Tahoe and Suburban include HVAC controls	–	S	S	–
<b>Cruise control</b> – electronic with resume, coast and decelerate/accelerate features	S	S	S	S
<b>Defogger</b> – electric, rear-window	S	S	S	S
<b>Floor covering</b> – colour-keyed carpet with 1st- and 2nd-row removable floor mats	S	S	S	S

INTERIOR (CONTINUED)	LS	LT	LTZ	TAHOE HYBRID LT
<b>Heater</b> – rear, auxiliary with passenger heating ducts – Tahoe and Suburban	S	S	S	S
<b>Instrumentation</b> – full analogue gauge cluster (includes speedometer, tachometer, odometer, trip odometer, fuel level, voltmeter (replaced with ECO gauge in Hybrid), engine temperature and oil pressure)	S	S	S	S
<b>Instrumentation</b> – Driver Information Centre, comprehensive multi-language system that displays numerous vehicle functions with both visual and audible reminders/warnings. Enables programmable personalization of features such as automatic locking/unlocking and exit lighting. Includes 8-point compass and exterior temperature display	S	S	S	S
<b>Instrumentation</b> – tire pressure monitoring system (except spare)	S	S	S	S
<b>Instrumentation</b> – GM Oil Life Monitoring System	S	S	S	S
<b>Lights</b> – overhead, reading and cargo with illuminated entry feature	S	S	S	S
<b>Mirror</b> – rear-view, auto-dimming	–	0	S	S
<b>Pedals</b> – power adjustable brake and accelerator – Tahoe and Suburban	0 <sup>13</sup>	S	S	S
<b>Pedals</b> – power adjustable brake and accelerator – Avalanche	0 <sup>14</sup>	0 <sup>14</sup>	S	–
<b>Power outlets</b> – auxiliary 12-volt (2 on instrument panel, 1 in cargo area and 2 in centre console when equipped with bucket seats)	S	S	S	S
<b>Power outlet</b> – auxiliary 115-volt 3-prong household type, located in rear	–	–	–	S
<b>Steering column</b> – tilt adjustable	S	S	S	S
<b>Steering wheel</b> – leather-wrapped with sound system and cruise controls	S	S	S	S
<b>Sunshades</b> – LH and RH, padded, colour-keyed, extendable with illuminated visor mirrors	S	S	S	S
<b>Trim accents</b> – includes instrument panel and doors (brushed metal on LS and LT with Z71, simulated woodgrain on LT, LTZ and Hybrid)	S	S	S	S
<b>Universal home remote</b> – 3-channel transmitter	–	S <sup>10</sup>	S	S
<b>Windows</b> – power, includes driver express-down and passenger lock-out features	S	S	S	S

### SEATS

Premium cloth 40/20/40 split-bench reclining front seat with power 6-way driver seat adjuster and manual lumbar adjuster, centre fold-down armrest with lockable storage compartment in centre seat cushion	S	0 <sup>15</sup>	–	–
Premium cloth reclining front bucket seats with power 6-way driver and front-passenger seat adjusters, manual lumbar adjusters and centre floor console – Avalanche	–	S	–	–
Leather-appointed reclining front bucket seats with power 6-way driver and front-passenger seat adjusters with manual lumbar adjusters and centre floor console – Tahoe and Suburban	–	S <sup>10</sup>	–	–
Leather-appointed full-feature power reclining front bucket seats with driver and front-passenger power 10-way seat adjusters (including power 2-way lumbar adjusters), heated seat cushions and seatbacks, driver's 2-position memory controls and centre floor console	–	0	–	S <sup>16</sup>

SEATS (CONTINUED)	LS	LT	LTZ	TAHOE HYBRID LT
Perforated leather-appointed full-feature power reclining front bucket seats with driver and front-passenger power 12-way seat adjusters (including power 4-way lumbar adjusters), heated and cooled seats, driver's 2-position memory controls and centre floor console	–	–	S	–
2nd-row 3-passenger 60/40 split-folding bench with centre armrest – Tahoe and Suburban	S	S	0	–
2nd-row 3-passenger flip-and-fold 60/40 split-folding bench – Avalanche	S	S	S	–
2nd-row reclining bucket seats – Tahoe and Suburban	–	0 <sup>17</sup>	S	–
2nd-row heated (outboard seating positions) – Tahoe and Suburban	–	0 <sup>17</sup>	S	–
2nd-row power release fold-and-tumble – Tahoe and Suburban	–	0	S	–
3rd-row 3-passenger 50/50 split-bench, removable <sup>18</sup> – Tahoe and Suburban	S	S	S	S

### ENTERTAINMENT SYSTEMS

AM/FM stereo – with CD player, MP3 playback compatible, auxiliary audio input jack, seek-scan, auto tone control, speed-compensated volume, TheftLock®, Radio Data System® (RDS) and digital clock	S	S	–	–
AM/FM stereo – with CD/DVD player upper slot and CD player lower slot, MP3 playback compatible (both), USB port, auxiliary audio input jack, seek-scan, auto tone control, speed-compensated volume, TheftLock, Radio Data System (RDS) and digital clock	–	0	S	–
XM Satellite Radio <sup>1</sup>	S	S	S	S
Bluetooth – utilizes vehicle sound system, microphone, voice recognition and controls with Bluetooth-enabled cell phones	S	S	S	S
6-speaker sound system – Tahoe and Suburban	S	–	–	S
6-speaker sound system – Avalanche	S	S	–	–
Bose 7-speaker premium sound system with centre channel speaker system and subwoofer – Avalanche	–	0	S	–
Bose 9-speaker premium sound system with subwoofer – Tahoe and Suburban	–	S	–	–
Bose 10-speaker Centre Channel sound system with subwoofer – Tahoe and Suburban	–	0	S	S
2nd-row audio controls and earphone jacks	–	S	S	–
DVD Entertainment System – 2nd-row, overhead fold-down 203 mm (8-in.) LCD colour monitor, DVD player, video camera/game input (RCA) jacks, 2 wireless two-channel headphones and remote control <sup>19</sup>	–	0 <sup>20</sup>	S	0
3rd-row DVD Entertainment System – available on Suburban models only, requires DVD entertainment system	–	0	0	–
Integrated DVD Navigation System – multimedia with navigation and voice recognition, includes Rearview Camera System, AM/FM stereo with CD player, MP3 playback compatible, auxiliary audio input jack, seek, scan, digital clock, auto tone control, speed-compensated volume, TheftLock and Radio Data System (RDS) <sup>19,21</sup>	–	0 <sup>20</sup>	0	S <sup>22</sup>

### PREFERRED EQUIPMENT GROUPS (PEGs)

<b>Tahoe, Suburban and Avalanche offer the following popular upgrades to the LT for even more convenience and comfort.</b>
<b>Tahoe &amp; Suburban PEG 1SD adds the following options to the LT:</b> full-feature leather-appointed, heated front bucket seats with power 10-way seat adjusters (including power 2-way lumbar adjusters) – 2nd-row heated (outboard seating positions) – auto-dimming interior rear-view mirror – exterior rear-view mirrors include power foldaway, power adjustable, heated, driver-side auto-dimming feature, passenger-side reverse tilt, side-entry illumination and integrated turn signals
<b>Avalanche PEG 1SC adds the following options to the LT:</b> leather-appointed front bucket seats – dual-zone automatic climate controls – power adjustable brake and accelerator pedals – ultrasonic rear parking assist – universal home remote
<b>Avalanche PEG 1SD adds the following options to the LT with PEG 1SC:</b> full-feature leather-appointed, heated front bucket seats with power 10-way seat adjusters (including power 2-way lumbar adjusters) – Bose 7-speaker premium sound system – auto-dimming interior rear-view mirror – exterior rear-view mirrors include power foldaway, power adjustable, heated, driver-side auto-dimming feature, side-entry illumination and integrated turn signals

S – Standard. 0 – Optional individually or in combination with other optional equipment. Note: The trim features indicated reflect only a portion of the total content of each trim level. See your sales consultant for complete listings, current availability and compatibility.

11 – Requires White Diamond Tricoat (98), available at extra cost.

12 – Rear-seat climate controls are included, located in the overhead console on LS models and rear of the centre floor console on LT and LTZ models.

13 – Requires available Drivers Convenience Package on Tahoe and Suburban.

14 – Available individually or with Driver Convenience Package on Avalanche. Requires available ultrasonic rear parking assist on Avalanche.

15 – Available on Avalanche only. Deletes Bose 7-speaker premium sound system.

16 – Heated front bucket seats on Hybrid.

17 – Requires leather-appointed full-feature front bucket seats.

18 – Third row is vinyl when leather-appointed seating is specified.


19 – DVD entertainment system and Integrated DVD navigation system are available as a package.

20 – Includes Bose 7-speaker premium sound system on Avalanche. Requires up-level sound system.

21 – At time of print, detailed map coverage is available for most major urban areas of the United States and for certain metropolitan areas of Canada (Vancouver, Calgary, Edmonton, Winnipeg, Windsor, London, Toronto, Ottawa, Montreal, Quebec City and Halifax). Coverage is significantly limited outside these areas.

22 – Hybrid includes power flow display on DVD navigation screen.

\* OnStar services require vehicle electrical system (including battery), wireless service and GPS satellite signals to be available and operating for features to function properly. OnStar acts as a link to existing emergency service providers. Subscription Service Agreement required. Ability to locate stolen vehicles varies with conditions. Call 1-888-4ONSTAR (1-888-466-7827) or visit onstar.ca for OnStar's Terms and Conditions, Privacy Statement and details and system limitations.

\*\* All-season tires may not satisfy winter tire requirements in all regions of the country. Tires specifically designed for severe winter conditions and marked with the "winter tire" symbol  may be required during certain months or in certain regions. Contact your Provincial, Municipal or local road authority for information regarding which tires are required in your particular area.

‡ Turn-by-Turn Navigation not available in certain areas. Visit onstar.ca for coverage map.

† Available in all 10 Canadian provinces and the 48 contiguous United States. Subscription sold separately after trial period.



## BACKED THE WAY THEY ARE BUILT

First we build our vehicles to achieve world-class quality standards and to offer the dependability Chevrolet is famous for. Then we stand behind our vehicles with the backing of the best coverage in Canada:

- 3-year/60,000 km New Vehicle Limited Warranty\*
- 5-year/160,000 km Powertrain Component Limited Warranty, with \$0 deductible on repairs and the warranty is fully transferable at no charge\*
- 5-year/160,000 km Courtesy Transportation\*
- 5-year/160,000 km 24/7 Roadside Assistance\*
- 6-year/160,000 km rust-through perforation coverage\*
- 8-year/130,000 km coverage on catalytic converters and powertrain control modules (PCMs)\*
- 8-year/160,000 km coverage on specific hybrid components on the Tahoe Hybrid model.\*

\*Whichever comes first. Conditions and limitations apply. See dealer for details.

### OTHER OWNERSHIP PRIVILEGES AND PROGRAMS:†

- **GM Protection Plan (GMPP)** – the only extended service plan backed by the resources and commitment of General Motors, GMPP may be purchased at the time of sale or subsequently during the New Vehicle Limited Warranty period
- **GM Goodwrench Service** – with GM-certified technicians and GM-approved parts, nobody knows your GM vehicle better.

† Conditions and limitations apply.

### TO HELP YOU PURCHASE A NEW VEHICLE:

- **GMAC Express Credit Application** – a convenient way to get pre-approved credit towards the purchase of your next GM vehicle
- **GMAC Purchase Financing** – on the spot financing at your GM dealership††
- **The GM Card** – eligible cardholders may be able to redeem up to \$3500 on GM Card Earnings toward the Total Purchase Price on selected vehicles. For more information on The GM Card please call 1-800-461-3279.†

† Conditions and limitations apply. †† Subject to eligibility.

### INFORMATION RESOURCES:

You can find more information about these programs from your GM dealer, or at these information centres:

- The GM website at [gm.ca](http://gm.ca)
- The GM Customer Communication Marketing Centre at **1-800-GM-DRIVE (1-800-463-7483 or 1-800-263-3830)** for TDD users)
- For information about GMAC visit [gmac.ca](http://gmac.ca) or call **1-800-616-4622**.

### A WORD ABOUT THIS BROCHURE

Some of the equipment shown or described throughout this brochure may be available at extra cost. We have tried to make this brochure comprehensive and factual. We reserve the right, however, to make changes at any time, without notice, in prices, colours, materials, equipment, specifications, models and availability. Specifications, dimensions, measurements, ratings and other numbers in this brochure and other printed materials provided at the dealership or affixed to vehicles are approximates based upon design and engineering drawings and prototypes and laboratory tests. Your vehicle may differ due to variations in manufacture and equipment. Since some information may have been adapted since the time of the printing, please check with your GM dealer for complete details. General Motors of Canada Limited reserves the right to lengthen or shorten the model year for any product, for any reason, or to start and end model years at different times.

### A WORD ABOUT ASSEMBLY

GM vehicles are equipped with engines and components produced and assembled by different operating units of General Motors, its subsidiaries and suppliers and these engines and components may change or be obtained from different sources from time to time. All such engines and components are approved for use in GM vehicles. Certain equipment ordered may be unavailable at the time of assembly and we suggest that you verify that your vehicle includes the equipment you ordered, or if there are changes, that they are acceptable to you.

### TRADEMARKS

The marks appearing in this brochure including, but not limited to: General Motors, GM, the GM emblem, Chevrolet, the Chevrolet emblem, Avalanche, Suburban, Tahoe, Z71 and their respective logos, emblems, slogans and vehicle model names and body designs; and other marks such as Active Fuel Management, Auto Ride, Autotrak, Convert-A-Cab, Midgate, Solar-Ray, StabiliTrak and Vortec are trademarks of General Motors and/or General Motors of Canada Limited, its subsidiaries, affiliates or licensors.

GMAC is a registered trademark of the General Motors Acceptance Corporation of Canada, Limited.

OnStar and the OnStar emblem are registered trademarks of the OnStar Corporation.

TheftLock is a registered trademark of Delphi Automotive Systems Inc.

Bose is a registered trademark of the Bose Corporation.

Radio Data System (RDS) is a registered trademark of the U.S. National Association of Broadcasters.

The XM name and related logos are trademarks of XM Canada, Canadian Satellite Radio Inc.

Bluetooth is a registered trademark of Bluetooth SIG Inc.

### COPYRIGHT

©Copyright 2009 General Motors of Canada Limited. All Rights Reserved. All text, images, graphics, and other materials in this brochure are subject to the copyright and other intellectual property rights of General Motors and/or General Motors of Canada Limited. These materials may not be reproduced, distributed or modified without the express written permission of General Motors and/or General Motors of Canada Limited.

Printed in Canada, November 2009.



## ONSTAR



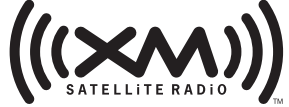
Does your vehicle have a help button?

With OnStar,\* you can get the help you need at the push of a button. If you're in a collision, you don't even need to ask for help – sensors around your vehicle can automatically alert an OnStar Advisor. If your car is stolen, we can use GPS technology to help police find it. OnStar with 1 year of the Safe & Sound Plan is standard on all Tahoe, Suburban and Avalanche LS models. LT, LTZ and Hybrid LT models include the Directions & Connections Plan with Turn-by-Turn Navigation\*\* – the simplest and smartest navigation system available. Just push the OnStar button and tell the Advisor where you want to go, then turn-by-turn directions are downloaded to your vehicle. No one offers more ways to help you on the road. Learn more at [onstar.ca](http://onstar.ca)

\* OnStar services require vehicle electrical system (including battery), wireless service and GPS satellite signals to be available and operating for features to function properly. OnStar acts as a link to existing emergency service providers. Subscription Service Agreement required. Ability to locate stolen vehicles varies with conditions. Call 1-888-4ONSTAR (1-888-466-7827) or visit [onstar.ca](http://onstar.ca) for OnStar's Terms and Conditions, Privacy Statement and details and system limitations.

\*\* Turn-by-Turn Navigation not available in certain areas. Visit [onstar.ca](http://onstar.ca) for coverage map.

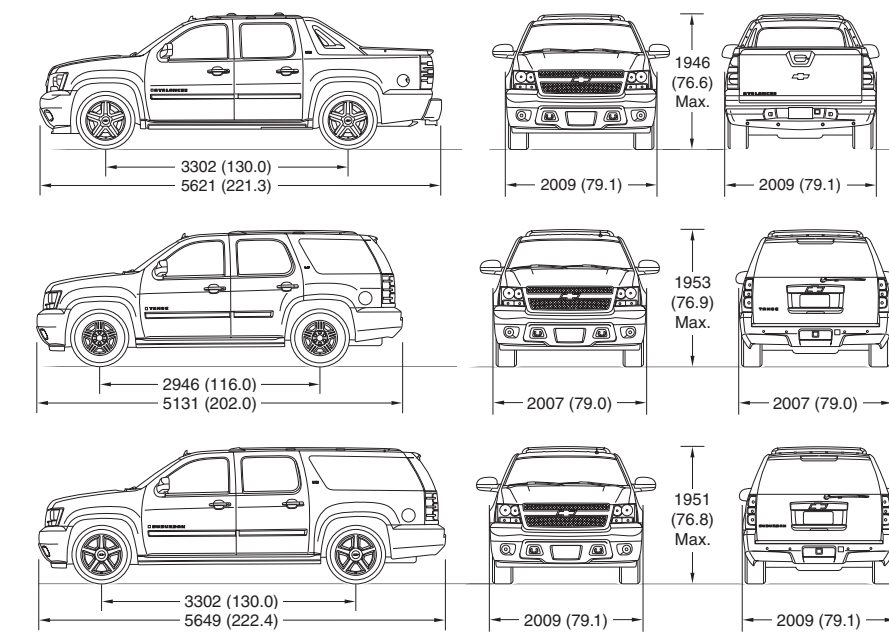
## XM SATELLITE RADIO



Your listening preferences are very personal. XM Satellite Radio gives you access to the largest playlist on the planet and the most commercial-free music in digital-quality sound. That's on top of news, talk, comedy and sports channels – including more than 1000 NHL games. It all adds up to 130 channels to choose from, coast to coast.† Why offer so much choice? XM Satellite Radio has to appeal to a wide range of tastes, with more than 9 million subscribers. And it's included on all Tahoe, Suburban and Avalanche models. Ask your dealer for more information.

† Available in 10 Canadian provinces and the 48 contiguous United States. Subscription sold separately after trial period.

## DIMENSIONS, mm (in.)



CARGO AREA DIMENSIONS, mm (in.)	TAHOE	SUBURBAN	AVALANCHE
Cargo floor height to ground	805 (31.7)	828 (32.6)	787 (31.0)
Maximum cargo height	1059 (41.7)	1052 (41.4)	–
Cargo floor width between wheel housings	1247 (49.1)	1247 (49.1)	1270 (50.0)
Load-floor length to front seat	2068 (81.4)	2586 (101.8)	–
Load-floor length to 2nd-row seat	1255 (49.4)	1768 (69.6)	–
Load-floor length to 3rd-row seat	386 (15.2)	904 (35.6)	–
Load-floor length to Midgate closed	–	–	1608 (63.3)
Load-floor length to Midgate open	–	–	2494 (98.2)

CARGO VOLUME, L (cu. ft.)	TAHOE	SUBURBAN
With all seats in position	479 (16.9)	1297 (45.8)
With 3rd-row seat removed or folded	1708 (60.3)	2549 (90)
With 2nd-row seat folded and 3rd-row seat removed	3084 (108.9)	3891 (137.4)

## WHEELS

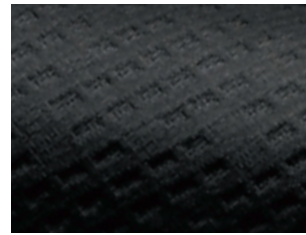


- A – 17" x 7.5" aluminum, smooth 5-spoke standard on LS and LT models (P46)
- B – 18" x 8.0" Z71-specific aluminum, included with Z71 Off-Road Package (N87)
- C – 18" x 8.0" low mass aluminum, standard on Hybrid models (P71)
- D – 17" x 7.5" bright machined aluminum, standard on Suburban 2500 models (P25)
- E – 20" x 8.5" polished aluminum, standard on LTZ and available on LT models (RCS)
- F – 20" x 8.5" chrome-clad aluminum, available on LTZ models (S80)

## INTERIOR FABRIC COLOURS



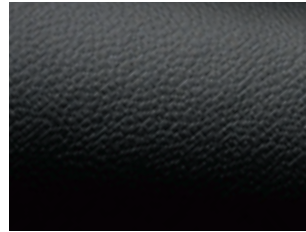
33 – Light Cashmere Premium Cloth



19 – Ebony Premium Cloth



33 – Light Cashmere Leather



19 – Ebony Leather



83 – Light Titanium Leather

## EXTERIOR/INTERIOR COLOUR COMPATIBILITY

▼ Exterior	Interior Model ►	19 – Ebony LS, LT, LTZ	33 – Light Cashmere LS, LT, LTZ	83 – Light Titanium LT, LTZ
37 – Imperial Blue Metallic <sup>1</sup>		•	•	•
41 – Black <sup>2</sup>		•	•	•
46 – Blue Granite Metallic		•	•	•
50 – Summit White <sup>2</sup>		•	•	•
51 – Gold Mist Metallic <sup>3</sup>		•	•	•
58 – Black Granite Metallic <sup>1*</sup>		•	•	•
74 – Victory Red <sup>1</sup>		•	•	•
80 – Red Jewel Tintcoat <sup>2,3,*</sup>		•	•	•
98 – White Diamond Tricoat <sup>4*</sup>		•	•	•
GGW – Taupe Gray Metallic <sup>2</sup>		•	•	•
GGZ – Sheer Silver Metallic <sup>2</sup>		•	•	•

\*Premium colour, available at extra charge.

1 – Not available on Tahoe and Suburban.

2 – Available with Z71 Off-Road Package.

3 – Not available on Avalanche.

4 – Requires available White Diamond Package and LTZ trim.

## EXTERIOR COLOURS



37 – Imperial Blue Metallic<sup>1</sup>



41 – Black<sup>2</sup>



46 – Blue Granite Metallic



50 – Summit White<sup>2</sup>



51 – Gold Mist Metallic<sup>3</sup>



58 – Black Granite Metallic<sup>1\*</sup>



74 – Victory Red<sup>1</sup>



80 – Red Jewel Tintcoat<sup>2,3,\*</sup>



GGW – Taupe Gray Metallic<sup>2</sup>



98 – White Diamond Tricoat<sup>4\*</sup>



GGZ – Sheer Silver Metallic<sup>2</sup>

The exterior colours in this brochure are as close to the actual vehicle production colour as the printing process allows. For more accurate colour samples, ask your sales consultant to see the dealer showroom vehicle colour display.

\*Premium colour, available at extra cost.