



CHEVROLET

WE'LL TAKE YOU EXACTLY WHERE YOU WANT TO GO.

You demand more from a vehicle than ever before. Exactly the same can be said of Chevrolet. For starters, you're looking for greener driving choices – Chevrolet offers more models that get better than 7 L/100 km highway fuel efficiency than any other manufacturer. Chevrolet also offers a range of vehicles powered by hybrid technology or alternative fuels. And just around the corner comes the arrival of the revolutionary Chevrolet Volt plug-in Extended-Range Electric Vehicle that can travel up to 64 km purely on electric power. Down the road, there are Hydrogen Fuel Cell Vehicles that point the way to a future of zero-emissions driving.

At Chevrolet, we take pride in more than the quality of our vehicles. We are also proud to be the Official Vehicle Supplier of the Vancouver 2010 Olympic and Paralympic Winter Games and of Canada's Olympic and Paralympic Teams. Chevrolet also demonstrates its enthusiastic support for Canada's athletes and coaches through its Making Dreams Possible and Chevrolet Safe & Fun Hockey initiatives. Share the passion.

For more information about Chevrolet visit chevrolet.gm.ca



*Chevrolet is a brand of General Motors of Canada, the Official Vehicle Partner of the Vancouver 2010 Olympic and Paralympic Winter Games. TM 2009, VANOC. Used under License.



190-10-B-018E

2010 TRAVERSE



2010 TRAVERSE



CHEVROLET



Growing up isn't just about taking on more responsibility. You can do that and still remain faithful to your personal sense of style and character - and pursue the activities you care most about.

And now, you can do even more of that. As long as you drive a vehicle that reflects who you are and what's important to you.

WHAT YOU SEE IS MOST DEFINITELY WHAT YOU GET.

Get ready for a more spirited and more expressive form of practical transportation. One with a strong presence, captivating style and an impressive list of credentials that is sure to vault it to the top of your list. It all begins with a 3.6L V6 engine that uses Direct Injection and Variable Valve Timing to maximize power, while also delivering the best highway fuel efficiency among eight-passenger crossovers.* Traverse's leadership extends to its best-in-class hauling capabilities, with the highest maximum cargo and towing capacities.** Traverse also earned the highest possible U.S. government frontal and side-impact crash test rating - five stars,† plus the Insurance Institute for Highway Safety (IIHS) Top Safety Pick for 2009.†† And the standard StabiliTrak® electronic stability control system in tandem with traction control enhance your command of the road, helping you avoid an incident before it occurs. Yes, a vehicle that looks this good can also have this much to offer. The 2010 Chevrolet Traverse.

*2010 Traverse ratings based on GM testing in accordance with Transport Canada test methods. Competitive information based on Natural Resources Canada's 2009 Fuel Consumption Guide for 2009 GM Mid-Utility Crossover segment. Excludes other GM vehicles. Your actual fuel consumption may vary.

**Based on 2009 GM Mid-Utility Crossover segment and latest available competitive information at time of printing. Excludes other GM vehicles. Cargo and load capacity limited by weight and distribution.

† Five-star rating is for the driver and front-passenger seating positions in the frontal crash test, and for the front and rear seating positions in the side-impact crash test. Model tested with standard side-impact air bags. U.S. government star ratings are part of the National Highway Traffic Safety Administration's (NHTSA's) New Car Assessment Program (NCAP) (safercar.gov).

†† For more information, visit iihs.org/ratings



FIVE-STAR FRONTAL AND SIDE-IMPACT CRASH TEST RATING†



Traverse LTZ, shown in Silver Ice Metallic with available equipment. For more information about Traverse, visit chevrolet.gm.ca



CHEVROLET

EIGHT IS MORE THAN ENOUGH.

You have quite the social circle, between your family and friends. Fortunately, Traverse is quite the vehicle, with standard seating for eight. And since you like to take good care of them all, Traverse includes Smart Slide™ second-row seating that makes it easier to enter and exit the third-row seat, or to expand second-row legroom. The cabin temperature is also passenger-friendly, with automatic tri-zone climate controls on 2LT and LTZ models, as well as heated and cooled front bucket seats on LTZ. As the driver, you receive the added comfort of a power eight-way driver's seat that is standard on all but LS models. Keep your social circle together in comfort – inside Traverse.



You can move the Smart Slide second-row seat with just one hand, quickly sliding the seat to create easy access to the third row. The Smart Slide can adjust fore and aft up to 89 mm (3.5 in.) and recline up to 4° to increase passenger comfort.



Traverse LTZ interior, shown in Cashmere with available equipment.

WIN THE SPACE RACE.

It isn't only the volume of space that makes Traverse such a versatile vehicle; it's also the interior's flexibility. That begins with your choice of the standard eight-passenger or available seven-passenger seating configurations. Even with every seat occupied, Traverse offers a generous amount of cargo space behind the third-row seat. If transporting cargo becomes your priority, you'll be gratified to learn that Traverse offers class-leading maximum cargo space - 3296 L (116.4 cu. ft.)*. That's a whopping amount of space available for your gear. It's the vehicle that offers you the space you need - and the flexibility required to take full advantage of it.

*With second- and third-row seats folded down. Based on 2009 GM Mid-Utility Crossover segment and latest available competitive information. Excludes other GM vehicles. Cargo and load capacity limited by weight and distribution.



The power remote liftgate enhances access to the rear cargo area. When the vehicle is in Park, you simply press and hold the power-release button on the key fob - then the liftgate opens automatically. Standard on Traverse 2LT and LTZ models.



Traverse 2LT interior, shown in Ebony with available equipment.

TAKE AVOIDANCE MEASURES.

Traverse is equipped with a thoughtful series of technologies that make it easier to avoid common pitfalls of contemporary driving – from objects behind you in a parking spot to unclear directions to your destination. Some help you navigate immediate challenges, such as the available Rearview Camera System and ultrasonic rear parking assist, standard on all but LS models, that provides an audible warning alert when it detects objects behind the vehicle as you are backing up. Others help you plan your best route, like the available Navigation System radio that includes voice recognition functionality.* Traverse also provides entertainment you won't want to miss, with standard XM Satellite Radio^{TM**} that includes the largest playlist on the planet. Enhanced avoidance meets enhanced enjoyment in Traverse.

*At time of print, detailed map coverage is available for most urban areas of the United States and for certain metropolitan areas of Canada (Vancouver, Calgary, Edmonton, Winnipeg, Windsor, London, Toronto, Ottawa, Montreal, Quebec City and Halifax). Coverage is limited outside these areas.

**Available in 10 Canadian provinces and the 48 contiguous United States. Subscription sold separately after trial period.



New wireless technology for select Bluetooth[®]-compatible phones lets you answer and end calls without touching your mobile phone.



Traverse LTZ interior, shown in Cashmere with Ebony accents and available equipment.

FIRST PREVENT, THEN PROTECT.

The first priority in the design and engineering of Traverse is to help you avoid an incident before it happens. That is accomplished with a series of advanced driver control systems, including the standard StabiliTrak electronic stability control system that intervenes to correct for oversteer and understeer. The system also includes Enhanced Rollover Protection and integrates with the standard electronic full-function traction control and the four-wheel anti-lock braking system with dynamic rear proportioning to provide tremendously assured handling. And to better handle the Canadian climate, the available automatic on-demand all-wheel-drive system adds all-weather traction. If a collision cannot be avoided, Traverse is equipped with comprehensive occupant protection, highlighted by six standard air bags.* They help Traverse achieve the highest possible U.S. government frontal and side-impact crash test rating: five stars.** And the standard OnStar[†] system includes Advanced Automatic Collision Notification. Prevention plus protection.

SIX AIR BAGS

Traverse is equipped with six standard air bags:* dual frontal air bags, seat-mounted side-impact air bags for the driver and front passenger, plus head curtain side-impact air bags that provide protection for outboard passengers seated in all three rows.

GM OIL LIFE MONITORING SYSTEM

Reducing the frequency of oil changes is the goal of this computer-based system. It assesses the condition of the engine oil based on vehicle operating data and then alerts you when a change is required. The environment benefits, and you do too, with reduced frequency of oil changes and lower operating costs.

ALL-WHEEL DRIVE (AWD)

Traverse is offered with standard front-wheel drive or available AWD. In normal conditions, the on-demand AWD system sends most of its torque to the front wheels. When wheel slippage is detected, the system automatically adjusts torque distribution to each wheel, maximizing the available grip.

TIRE PRESSURE MONITORING SYSTEM

Under inflation causes tires to overheat and wear faster and also reduces fuel efficiency. The standard tire pressure monitoring system uses sensors to detect when tire pressure is too low in any tire, except the spare. The system then displays a warning on the Driver Information Centre.

BODY-FRAME INTEGRAL ARCHITECTURE

Traverse's body-frame integral architecture is both light in weight for increased fuel efficiency and exceptionally rigid providing impressive strength. The structure allows for a low step-in height and more refined, car-like handling.

HIGH-STRENGTH STEEL

Traverse's structural rigidity and crash protection is enhanced by the high-strength steel used in its body-frame construction. The primary load paths employ ultra-high-strength steel that is four times stronger than conventional carbon steel. The dual-phase steel used in other critical areas is three times stronger than conventional steel.



* A NOTE ON CHILD SAFETY: Always use safety belts and proper child restraints, even in vehicles equipped with air bags. Refer to the Traverse Owner's Manual and child safety seat instructions for more information.

** Five-star rating is for the driver and front-passenger seating positions in the frontal crash test, and for the front and rear seating positions in the side-impact crash test. Model tested with standard side-impact air bags. U.S. government star ratings are part of the National Highway Traffic Safety Administration's (NHTSA's) New Car Assessment Program (NCAP) (safercar.gov).

† OnStar services require vehicle electrical system (including battery), wireless service and GPS satellite signals to be available and operating for features to function properly. OnStar acts as a link to existing emergency service providers. Subscription Service Agreement required. Ability to locate stolen vehicles varies with conditions. Call 1-888-4ONSTAR (1-888-466-7827) or visit onstar.ca for OnStar's Terms and Conditions, Privacy Statement and details and system limitations.

POWER AND FUEL EFFICIENCY – THE DYNAMIC DUO.

Traverse achieves its incredible combination of robust power and unexpected fuel efficiency by incorporating advanced engine management technology. The dynamic duo in play here is Variable Valve Timing (VVT) and Direct Injection. Variable Valve Timing automatically adjusts the timing of the valve operation to reduce fuel consumption while increasing power output. Direct Injection delivers fuel directly into the combustion chamber for a more complete burn, reducing both fuel demand and emissions. The results speak for themselves: the 3.6L V6 engine produces 281 horsepower in LS and LT models and 288 horsepower in LTZ. That substantial power translates into an impressive, class-leading 2359 kg (5200 lb.) towing capacity,* when properly equipped. The fuel efficiency is also exemplary – the V6 engine and six-speed automatic transmission combination help Traverse deliver 8.4 L/100 km highway ratings.** Now that's a dynamic approach to power.

* Based on 2009 GM Mid-Utility Crossover segment and latest available competitive information. Excludes other GM vehicles.

** 2010 Traverse ratings based on GM testing in accordance with Transport Canada test methods. Your actual fuel consumption may vary.



Traverse LTZ, shown in Silver Ice Metallic with available equipment.

TRAVERSE MODEL OVERVIEW

TRAVERSE LS

Traverse LS includes these standard features:

- 281 hp 3.6L V6 engine with Variable Valve Timing (VVT) and Direct Injection
- GM Oil Life Monitoring System
- 6-speed automatic transmission
- 4-wheel disc brakes with ABS and Panic Brake Assist
- StabiliTrak electronic stability control system
- Traction control
- 4-wheel independent suspension
- 17-in. steel wheels with painted wheel cover
- Tire pressure monitoring system
- Power exterior mirrors, manual folding
- Chrome door handles
- Remote keyless entry system
- Six air bags
- Driver Information Centre
- Air conditioning
- Power windows and door locks
- Tilt and telescoping steering column
- Cruise control
- Seating for eight with front bucket seats, including manual 4-way driver's seat adjuster, Smart Slide flat-folding second-row seat and 60/40 split-bench third-row seat
- 6-speaker sound system with CD player, MP3 playback and auxiliary audio input jack
- XM Satellite Radio
- OnStar with 1 year of the Directions & Connections Plan, including Turn-by-Turn Navigation.

TRAVERSE 1LT

Traverse 1LT enhances LS features with:

- 18-in. machined aluminum wheels
- Body-colour bodyside and chrome beltline mouldings
- Ultrasonic rear parking assist
- Heated, body-colour power exterior mirrors with integral blind spot mirrors and convex spotter mirrors, manual folding
- Power 8-way driver's seat adjuster
- Enhanced Driver Information Centre with exterior temperature and compass displays
- Leather-wrapped steering wheel with sound system controls
- Bluetooth phone connectivity.

TRAVERSE 2LT

Traverse 2LT enhances 1LT features with:

- Power rear liftgate
- Rearview Camera System
- Remote vehicle starter system
- Auto-dimming interior rear-view mirror
- Tri-zone automatic climate control
- Seating for seven with second-row Smart Slide captain's chairs
- Bose® 10-speaker premium sound system and USB port
- Rear-seat audio controls
- Universal home remote transmitter.

TRAVERSE LTZ

Traverse LTZ enhances 2LT features with:

- 288 hp 3.6L V6 engine
- 20-in. machined ultra-bright aluminum wheels
- Heated, body-colour power exterior mirrors with integral blind spot mirrors and convex spotter mirrors, power folding, integral turn signals and driver's memory feature
- Body-colour mouldings with chrome accents
- Dual chrome exhaust tips
- Seating for 7 with heated and cooled front bucket seats, driver's side 2-position memory function, plus power 4-way front-passenger seat adjuster
- Perforated leather-appointed seating in first and second rows.



HOW TO TRANSFORM YOUR TRAVERSE INTO A ONE-OF-A-KIND.

If you believe your vehicle represents an important expression of your individuality, take Traverse's style and functionality to the next level with the addition of Chevrolet Accessories. They were part of Traverse's development process to ensure they offer the same quality of fit, finish and function as the rest of the vehicle. They are backed by the 3-year/60,000 km New Vehicle Limited Warranty* and can be included in your finance agreement through GMAC. Ask your dealer for a complete list of the Chevrolet Accessories available for Traverse, or visit gm.ca

*Whichever comes first, when permanently installed by the dealer at the time you purchase your new vehicle, or for the remainder of the New Vehicle Limited Warranty if installed after the time of your new vehicle purchase, but no less than 12 months.

Some Chevrolet Accessories available for Traverse include:

- Headrest DVD system
- Two-way remote starter
- Chrome tubular assist steps
- Hard cargo carrier
- Side-window weather deflectors
- Cargo security shade
- Cargo convenience net
- Sunroof weather deflector
- Hitch-mounted bike/ski carrier
- Roof rack cross bars
- Premium all-season floor mats
- 20-in. wheels
- Moulded hood protector
- Portable music player cable.



ACCESSORIES



ONSTAR



Does your vehicle have a help button? With OnStar,* you can get the help you need at the push of a button. If you're in a collision, you don't even need to ask for help – sensors around your vehicle can automatically alert an OnStar Advisor. If your vehicle is stolen, we can use GPS technology to help police find it. All Traverse models include OnStar with 1 year of the Directions & Connections Plan, including Turn-by-Turn Navigation** – the simplest and smartest navigation system available. Just push the OnStar button and tell the Advisor where you want to go, then turn-by-turn directions are downloaded to your vehicle. No one offers more ways to help you on the road. Learn more at onstar.ca

XM SATELLITE RADIO



Your listening preferences are very personal. XM Satellite Radio gives you access to the largest playlist on the planet and the most commercial-free music in digital-quality sound. That's on top of news, talk, comedy and sports channels – including more than 1000 NHL games. It all adds up to 130 channels to choose from, coast to coast.† Why offer so much choice? XM Satellite Radio has to appeal to a wide range of tastes, with more than 9 million subscribers. And it's included on all Traverse models. Ask your dealer for more information.

*OnStar services require vehicle electrical system (including battery), wireless service and GPS satellite signals to be available and operating for features to function properly. OnStar acts as a link to existing emergency service providers. Subscription Service Agreement required. Ability to locate stolen vehicles varies with conditions. Call 1-888-4ONSTAR (1-888-466-7827) or visit onstar.ca for OnStar's Terms and Conditions, Privacy Statement and details and system limitations.

** Turn-by-Turn Navigation not available in certain areas. Visit onstar.ca for coverage map.

† Available in 10 Canadian provinces and the 48 contiguous United States. Subscription sold separately after trial period.

2010 TRAVERSE STANDARD AND OPTIONAL FEATURES

SAFETY AND SECURITY	LS	1LT	2LT	LTZ
Air bags – dual-stage, driver and front-passenger, frontal with passenger-side air bag suppression	S	S	S	S
Air bags – driver and front-passenger, seat-mounted side-impact	S	S	S	S
Air bags – front-to-rear, outboard seating positions, head curtain side-impact	S	S	S	S
Door locks – power, programmable with lock-out protection	S	S	S	S
Door locks – rear, child-security	S	S	S	S
Headlights – Daytime Running Lights with automatic light control	S	S	S	S
Keyless entry system – programmable remote with Panic feature	S	S	S	S
OnStar In-Vehicle Communications and Assistance Service – includes 1 year of the Directions & Connections* Plan with Turn-by-Turn Navigation**	S	S	S	S
StabiliTrak – electronic stability control system with Proactive Roll Avoidance	S	S	S	S
Theft-deterrent system – content theft alarm, audible/visible, programmable	S	S	S	S
Theft-deterrent system – electronic immobilizer	S	S	S	S
Traction control – electronic, full-function, all-speed	S	S	S	S
Ultrasonic rear parking assist – rear obstacle detection system with audible warning	–	S	S	S

MECHANICAL	LS	1LT	2LT	LTZ
Battery – with run-down protection	S	S	S	S
Brakes – power, 4-wheel disc with 4-wheel anti-lock braking system (ABS), dynamic rear proportioning (DRP) and Panic Brake Assist	S	S	S	S
Drive – front-wheel (FWD)	S	S	S	S
Drive – automatic, on-demand all-wheel (AWD)	0	0	0	0
Engine – 3.6L V6 with VVT and Direct Injection Horsepower with single exhaust – 281 @ 6300 rpm; Torque – 266 lb.-ft. @ 3400 rpm Horsepower with dual exhaust – 288 @ 6300 rpm; Torque – 270 lb.-ft. @ 3400 rpm	S	S	S	–
Engine – block heater	0	0	0	0
Exhaust system – aluminized stainless steel	S	S	S	S
Exhaust system – dual with chrome tips	–	–	–	S
Steering – power, rack-and-pinion	S	–	–	–
Steering – power, rack-and-pinion, variable assist	–	S	S	S
Suspension – 4-wheel independent	S	S	S	S
Transmission – 6-speed automatic with overdrive	S	S	S	S
Vehicle starter system – remote	0	0	S	S

EXTERIOR	LS	1LT	2LT	LTZ
Glass – Solar-Ray® tinted, deep-tinted behind front doors	S	S	S	S
Liftgate – rear, manual	S	S	–	–
Liftgate – rear, power	–	–	S	S
Mirrors – manual folding, power remote control, black	S	–	–	–
Mirrors – manual folding, power remote control, heated with integral turn signals and spotter mirror, body-colour	–	S	S	–
Mirrors – power folding, power remote control, heated, integral turn signals, spotter mirror and driver side memory feature, body-colour	–	–	–	S
Moldings – beltline and bodyside, black	S	–	–	–
Moldings – chrome beltline	–	S	S	S
Moldings – bodyside, body-coloured	–	S	S	–
Moldings – bodyside, body-coloured with chrome accent	–	–	–	S
Moldings – roof rails, black	S	S	S	S


EXTERIOR (CONTINUED)	LS	1LT	2LT	LTZ
Rearview Camera System – reverse assist for parking or trailer towing, integrated into interior rear-view mirror or navigation screen when ordered	–	0 ¹	S	S
Spoiler – rear, body-coloured	S	S	S	S
Sunroof – two panel, power tilt-sliding front and fixed rear with manual sunshade	–	0	0	0
Tires – P245/70R17 all-season [†]	S	–	–	–
Tires – P255/65R18 all-season [†]	–	S	S	–
Tires – P255/55R20 all-season [†]	–	–	–	S
Trailer Towing Package – heavy-duty, includes hitch receiver platform, 51 mm (2 in.) hitch receiver, 7-wire trailer wiring harness with sealed connector, transmission cooler and electric brake controller harness	0	0	0	0
Wheels – 17" x 7.5" steel with painted wheel cover (A)	S	–	–	–
Wheels – 18" x 7.5" machined aluminum (B)	–	S	S	–
Wheels – 20" x 7.5" machined ultra-bright aluminum (C)	–	–	–	S
Windshield wipers – front with variable delay (intermittent)	S	S	S	S
Wiper/washer – rear-window with variable delay	S	S	S	S

INTERIOR	LS	1LT	2LT	LTZ
Air conditioning – manual, single-zone front climate control	S	S	–	–
Air conditioning – rear, manual	S	S	–	–
Air conditioning – automatic, tri-zone climate control with individual settings for driver, front-passenger and 2nd-/3rd-row controls for rear-seat passengers	–	0 ²	S	S
Cargo storage – under rear cargo floor	S	S	S	S
Console – front centre, includes two cupholders and storage	S	S	S	S
Console – 2nd-row, armrest with cupholders and storage	–	–	–	0
Cruise control – electronic with resume, coast and decelerate/accelerate features	S	S	S	S
Cupholders – 4 in 1st-row, 4 in 2nd-row and 2 in 3rd-row (10)	S	S	S	S
Floor mats – front and rear removable floor mats	S	S	S	S
Instrumentation – analogue gauges (include speedometer, tachometer, coolant temperature, voltmeter and fuel level) and tire pressure monitoring system	S	–	–	–
Instrumentation – analogue gauges (include speedometer, tachometer, coolant temperature, voltmeter and fuel) with enhanced Driver Information Centre (DIC) including 8-point compass, exterior temperature display and tire pressure monitoring system	–	S	S	S
Instrumentation – GM Oil Life Monitoring System with readout in DIC	S	S	S	S
Lights – includes LED front reading, LED 2nd-row reading integrated into dome, LED cargo area, theatre dimming and illuminated entry/exit features	S	S	S	S
Mirror – rear-view with OnStar controls	S	S	–	–
Mirror – rear-view, with OnStar controls and auto-dimming feature	–	–	S	S
Power outlets – auxiliary	S	S	S	S
Power outlets – 115-volt AC 3-prong household outlet in rear of front-row centre console	–	0 ²	0 ²	0 ²
Steering column – tilt adjustable and telescopic	S	S	S	S
Steering wheel – leather-wrapped with sound system controls	–	S	S	S
Sunshades – LH and RH padded; illuminated vanity mirrors	S	S	S	S
Universal home remote – 3-channel transmitter	–	–	S	S
Windows – power, driver-side express-down and rear lock-out features	S	S	S	–
Windows – power, driver-side express-up/down, front-passenger express-down with rear lock-out features	–	–	–	S

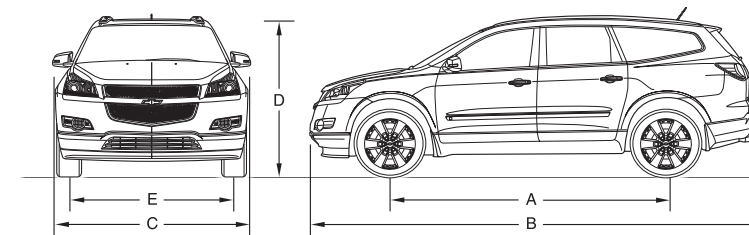
SEATS	LS	1LT	2LT	LTZ
8-passenger seating configuration, includes deluxe cloth front bucket seats with manual 4-way driver seat adjuster and manual 2-way front-passenger seat adjuster, 2nd-row Smart Slide flat-folding 60/40 split-bench seat and 3rd-row 60/40 split-bench seat	S	–	–	–
8-passenger seating configuration, includes deluxe cloth front bucket seats with power 8-way driver seat adjuster with power lumbar and manual 2-way front-passenger adjuster, 2nd-row Smart Slide flat-folding 60/40 split-bench seat and 3rd-row 60/40 split-bench seat	–	S	–	–
As above, with 2nd-row Smart Slide captain's chairs replacing 60/40 split-bench seat for 7-passenger seating	–	0	–	–
7-passenger seating configuration, includes deluxe cloth front bucket seats with power 8-way driver seat adjuster with power lumbar and manual 2-way front-passenger adjuster, 2nd-row Smart Slide captain's chairs and 3rd-row 60/40 split-bench seat (also available with leather-appointed seats, ³ heated front bucket seats – includes power 4-way front-passenger adjuster)	–	–	S	–
As above, 8-passenger seating configuration with 2nd-row flat-folding 60/40 split-bench seat replaces 2nd-row captain's chairs (also available with leather-appointed seats, ³ heated front bucket seats – includes power 4-way front-passenger seat adjuster)	–	–	0	–
7-passenger seating configuration, includes heated and cooled perforated leather-appointed ³ deluxe front bucket seats with power 8-way driver seat adjuster with 2-way memory, power 4-way front-passenger adjuster, power lumbar adjusters, second-row Smart Slide captain's chairs and 3rd-row 60/40 split-bench seat	–	–	–	S

ENTERTAINMENT SYSTEMS	LS	1LT	2LT	LTZ
All Traverse sound systems include an electronically tuned AM/FM stereo with CD player, MP3 playback compatibility, seek/scan, auto tone control, speed-compensated volume, Radio Data System® (RDS), auxiliary audio input jack, TheftLock®, digital clock and 6 speakers	S	S	–	–
As above, includes USB port and Bose 10-speaker premium sound system with amplifier	–	–	S	S
Bluetooth – utilizes vehicle audio system, microphone, voice recognition and controls with Bluetooth-enabled mobile phones	–	S	S	S
XM Satellite Radio ^{††}	S	S	S	S
Rear-seat audio controls and earphone jacks	–	0 ²	S	S
DVD entertainment system – AM/FM stereo with CD/DVD player and USB port, 2nd-row overhead DVD player, remote control, 2 wireless headphones and Bose 10-speaker 5.1 surround sound system	–	0 ^{4,5}	0 ⁵	0 ⁵
Navigation System – DVD-based, includes AM/FM stereo with USB port and separate CD slot and Bose 10-speaker 5.1 surround sound system ⁹	–	–	0	0
DVD entertainment system with navigation system – combines the two systems (noted above) into a convenient package ⁹	–	–	0 ⁵	0 ⁵

S – Standard.
 0 – Optional individually or in combination with other optional equipment.
 1 – Includes interior rear-view auto-dimming mirror with OnStar controls.
 2 – Included with available DVD entertainment system.
 3 – Leather-appointed seats on front and 2nd-rows only, 3rd-row is vinyl covered.
 4 – Includes rear-seat audio controls and tri-zone automatic air conditioning controls.
 5 – Includes 115-volt AC 3-prong outlet.
 6 – Rearview Camera and compass are integrated into navigation display. At time of print, detailed map coverage is available for most urban areas of the United States and for certain metropolitan areas of Canada (Vancouver, Calgary, Edmonton, Winnipeg, Windsor, London, Toronto, Ottawa, Montreal, Quebec City and Halifax). Coverage is limited outside these areas.

*OnStar services require vehicle electrical system (including battery), wireless service and GPS satellite signals to be available and operating for features to function properly. OnStar acts as a link to existing emergency service providers. Subscription Service Agreement required. Ability to locate stolen vehicles varies with conditions. Call 1-888-4ONSTAR (1-888-466-7827) or visit onstar.ca for OnStar's Terms and Conditions, Privacy Statement and details and system limitations.
 **Turn-by-Turn Navigation not available in certain areas. Visit onstar.ca for coverage map.
 †All-season tires may not satisfy winter tire requirements in all regions of the country. Tires specifically designed for severe winter conditions and marked with the "winter tire" symbol  may be required during certain months or in certain regions. Contact your Provincial, Municipal or local road authority for information regarding which tires are required in your particular area.
 ††Available in 10 Canadian provinces and the 48 contiguous United States. Subscription sold separately after trial period.

DIMENSIONS



EXTERIOR, mm (in.)	
Wheelbase (A)	3020 (118.9)
Length (B)	5207 (205.0)
Width (C) – excluding mirrors	1991 (78.4)
Height (D) – excluding roof rack	1788 (70.4)
Front track (E)	1722 (67.8)
Rear track	1712 (67.4)

INTERIOR, mm (in.) front/2nd-row/3rd-row	
Headroom	1026/1001/960 (40.4/39.4/37.8)
Legroom	1049/935/843 (41.3/36.8/33.2)
Shoulder room	1575/1557/1463 (62.0/61.3/57.6)
Hip room	1501/1468/1227 (59.1/57.8/48.3)

CAPACITIES/WEIGHT	
Cargo volume, L (cu. ft.)	
– behind 3rd-row seats	691 (24.4)
– with 3rd-row seats folded	1948 (68.8)
– with 2nd- and 3rd-row seats folded	3296 (116.4)
Fuel tank, L (imp. gal.)	83.0 (18.2)
Towing max. kg (lb.) [‡]	2359 (5200)

[‡]When properly equipped. Trailer towing capacity is the weight of the trailer, its load or contents plus any other weight added to the tow vehicle. Optional equipment, passenger or cargo will reduce trailer towing capacity. All towing recommendations are subject to change. Trailer tongue load should be 10% of the maximum trailer weight but should not exceed the load rating specified for the vehicle, engine or hitch combination. Many trailer towing applications require additional optional equipment. See your dealer or refer to the Traverse Owner's Manual for details. For more information on trailer towing go to gm.ca

BACKED THE WAY THEY ARE BUILT

First we build our vehicles to achieve world-class quality standards and to offer the dependability Chevrolet is famous for. Then we stand behind our vehicles with the backing of the best coverage in Canada:

- 3-year/60,000 km New Vehicle Limited Warranty*
 - 5-year/160,000 km Powertrain Component Limited Warranty, with \$0 deductible on repairs and the warranty is fully transferable at no charge*
 - 5-year/160,000 km Courtesy Transportation*
 - 5-year/160,000 km 24/7 Roadside Assistance*
 - 6-year/160,000 km rust-through perforation coverage*
 - 8-year/130,000 km coverage on catalytic converters and powertrain control modules (PCMs)*.
- * Whichever comes first. Conditions and limitations apply, see dealer for details.

OTHER OWNERSHIP PRIVILEGES AND PROGRAMS:†

- **GM Protection Plan (GMPP)** – the only extended service plan backed by the resources and commitment of General Motors, GMPP may be purchased at the time of sale or subsequently during the New Vehicle Limited Warranty period
- **GM Goodwrench Service** – with GM-certified technicians and GM-approved parts, nobody knows your GM vehicle better.

† Conditions and limitations apply.

TO HELP YOU PURCHASE A NEW VEHICLE:

- **GMAC Express Credit Application** – a convenient way to get pre-approved credit towards the purchase of your next GM vehicle
- **GMAC Purchase Financing** – on the spot financing at your GM dealership††
- **GM Student Bonus Program** – GM will cover the first two purchase finance payments on eligible new GM vehicles for students and recent graduates of high school, college or university†
- **The GM Card** – eligible cardholders may be able to redeem up to \$3500 on GM Card® Earnings toward the Total Purchase Price on selected vehicles. For more information on The GM Card please call 1-800-461-3279.†

† Conditions and limitations apply. †† Subject to eligibility.

INFORMATION RESOURCES:

You can find more information about these programs from your GM dealer, or at these information centres:

- The GM website at gm.ca
- The GM Customer Communication Marketing Centre at **1-800-GM-DRIVE (1-800-463-7483 or 1-800-263-3830** for TDD users)
- For information about GMAC visit gmac.ca or call **1-800-616-4622**.

A WORD ABOUT THIS BROCHURE

Some of the equipment shown or described throughout this brochure may be available at extra cost. We have tried to make this brochure comprehensive and factual. We reserve the right, however, to make changes at any time, without notice, in prices, colours, materials, equipment, specifications, models and availability. Specifications, dimensions, measurements, ratings and other numbers in this brochure and other printed materials provided at the dealership or affixed to vehicles are approximates based upon design and engineering drawings and prototypes and laboratory tests. Your vehicle may differ due to variations in manufacture and equipment. Since some information may have been adapted since the time of the printing, please check with your GM dealer for complete details. General Motors of Canada Limited reserves the right to lengthen or shorten the model year for any product, for any reason, or to start and end model years at different times.

A WORD ABOUT ASSEMBLY

GM vehicles are equipped with engines and components produced and assembled by different operating units of General Motors, its subsidiaries and suppliers and these engines and components may change or be obtained from different sources from time to time. All such engines and components are approved for use in GM vehicles. Certain equipment ordered may be unavailable at the time of assembly and we suggest that you verify that your vehicle includes the equipment you ordered, or if there are changes, that they are acceptable to you.

TRADEMARKS

The marks appearing in this brochure including, but not limited to: General Motors, GM, the GM emblem, Chevrolet, the Chevrolet emblem, Traverse and their respective logos, emblems, slogans and vehicle model names and body designs; and other marks such as Smart Slide, Solar-Ray and StabiliTrak are trademarks of General Motors and/or General Motors of Canada Limited, its subsidiaries, affiliates or licensors.

GMAC is a registered trademark of the General Motors Acceptance Corporation of Canada, Limited.

OnStar and the OnStar emblem are registered trademarks of the OnStar Corporation.

TheftLock is a registered trademark of Delphi Automotive Systems Inc.

Radio Data System (RDS) is a registered trademark of the U.S. National Association of Broadcasters.

The XM name and related logos are trademarks of XM Canada, Canadian Satellite Radio Inc.

Bose is a registered trademark of the Bose Corporation.

Bluetooth is a registered trademark of Bluetooth SIG Inc.

COPYRIGHT

©Copyright 2009 General Motors of Canada Limited. All Rights Reserved. All text, images, graphics, and other materials in this brochure are subject to the copyright and other intellectual property rights of General Motors and/or General Motors of Canada Limited. These materials may not be reproduced, distributed or modified without the express written permission of General Motors and/or General Motors of Canada Limited.

Printed in Canada, September 2009.



INTERIOR FABRIC COLOURS

Cloth



19C – Ebony



83C – Light Titanium

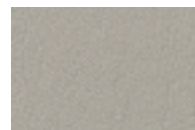
Leather



192 – Ebony

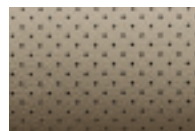


772 – Cashmere



832 – Light Titanium

Perforated Leather



313 – Cashmere



843 – Light Titanium

WHEELS



A – 17"x7" steel with painted wheel cover, standard on LS

B – 18"x7.5" machined aluminum, standard on 1LT and 2LT

C – 20"x7.5" machined ultra-bright aluminum, standard on LTZ

EXTERIOR COLOURS



12 – Dark Cherry Metallic



17 – Silver Ice Metallic



25 – Dark Blue Metallic



50 – Summit White



51 – Gold Mist Metallic¹



57 – Cyber Gray Metallic¹



58 – Black Granite Metallic*



80 – Red Jewel Tintcoat*

The exterior colours in this brochure are as close to the actual vehicle production colour as the printing process allows. For more accurate colour samples, ask your sales consultant to see the dealer showroom vehicle colour display.

EXTERIOR/INTERIOR COLOUR COMPATIBILITY

	Interior Model ▶	Ebony – 19C/192 1LT/2LT	Cashmere – 313 LTZ	Cashmere – 772 2LT	Light Titanium – 83C/832 LS/1LT/2LT	Light Titanium – 843 LTZ
▼ Exterior						
12 – Dark Cherry Metallic		•	•	•	•	•
17 – Silver Ice Metallic		•	•	•	•	•
25 – Dark Blue Metallic		•	•	•	•	•
50 – Summit White		•	•	•	•	•
51 – Gold Mist Metallic ¹		•	•			
57 – Cyber Gray Metallic ¹		•	•	•	•	•
58 – Black Granite Metallic*		•	•	•	•	•
80 – Red Jewel Tintcoat*		•	•	•	•	•

*Available at extra cost and not available on LS models.

¹ – Not available on LS models.