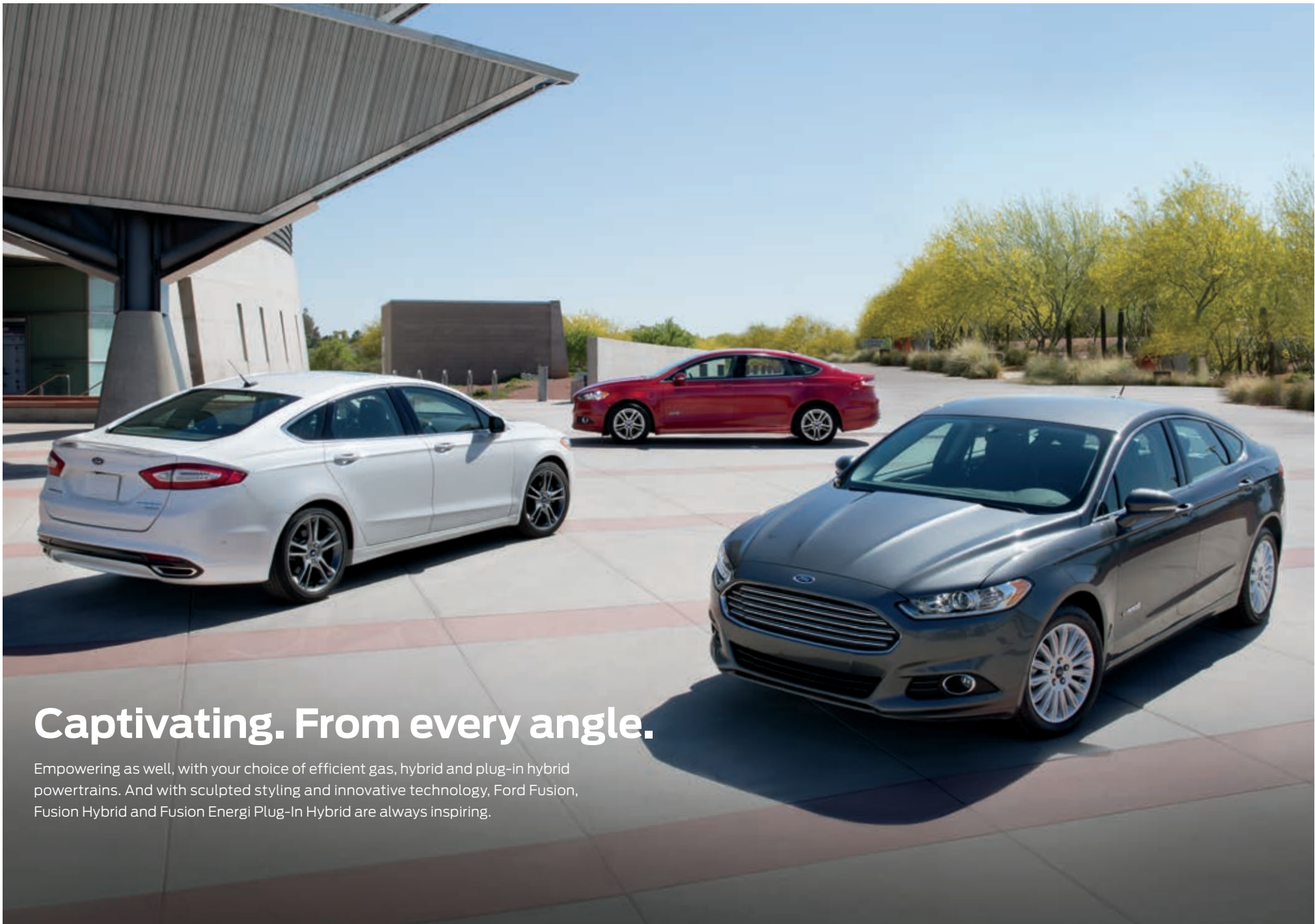


2016 | **FUSION+HYBRID**  
**FUSION ENERGI**



Go Further



# Captivating. From every angle.

Empowering as well, with your choice of efficient gas, hybrid and plug-in hybrid powertrains. And with sculpted styling and innovative technology, Ford Fusion, Fusion Hybrid and Fusion Energi Plug-In Hybrid are always inspiring.

*Titanium. White Platinum Metallic Tri-coat.  
Fusion Energi Titanium. Ruby Red Metallic Tinted Clearcoat. Hybrid SE. Magnetic. Available equipment.*

2016 **FUSION+HYBRID**  
**FUSION ENERGI**  
ford.com



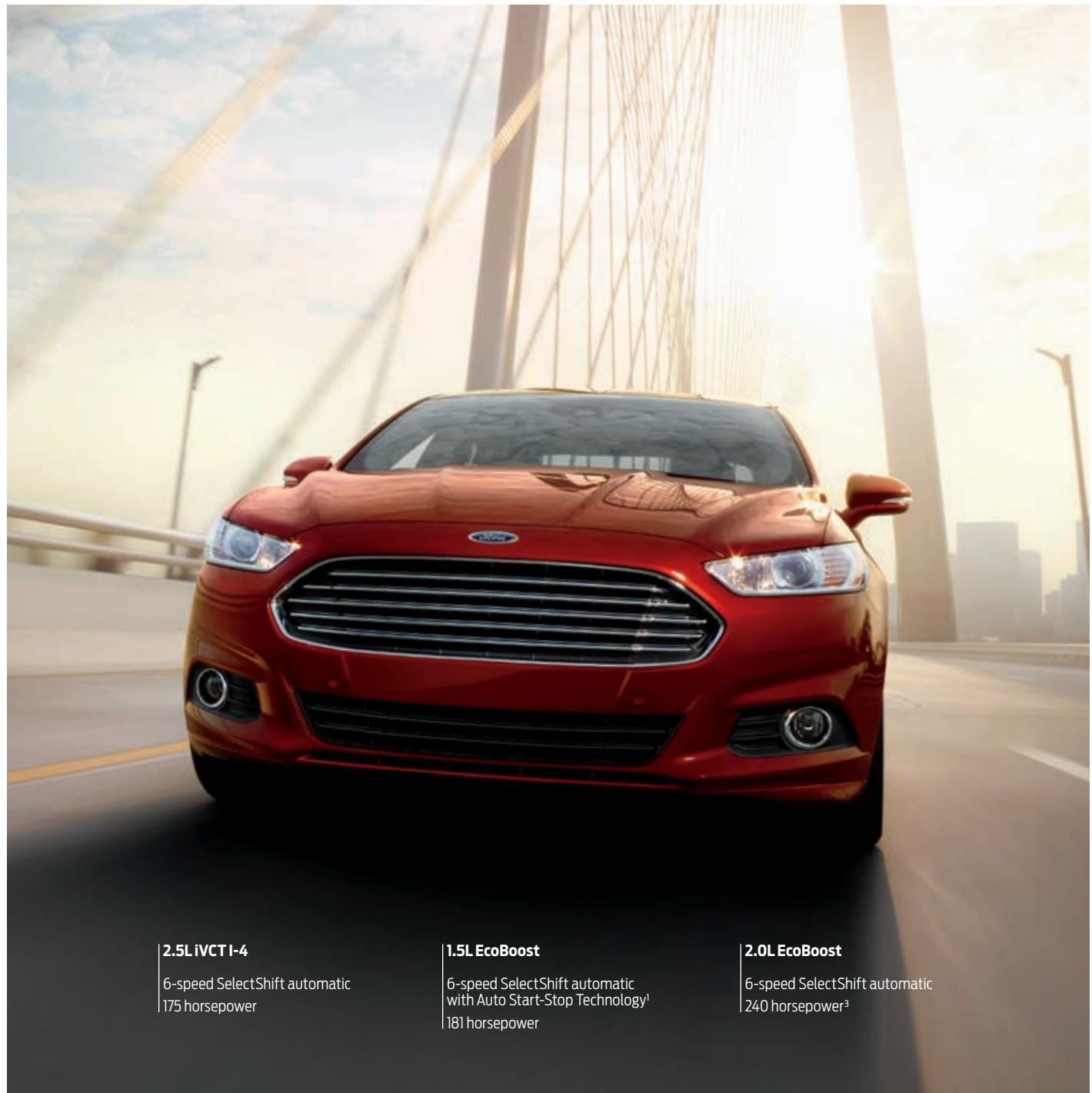
## Motivating. With powerful gas choices.

Equip your gasoline-powered Fusion model with a standard 2.5L iVCT engine or one of 2 EcoBoost® turbocharged, direct-injection powerplants.<sup>1</sup>

**With robust low-end torque** and virtually no turbo lag, EcoBoost technology squeezes maximum power from each drop of fuel. Along with impressive efficiency. Get 181 hp from the 1.5L EcoBoost<sup>1</sup> with 6-speed SelectShift® automatic transmission and Auto Start-Stop Technology,<sup>1</sup> plus an EPA-estimated rating of 37 hwy mpg.<sup>2</sup>

**For performance-minded drivers**, a 240-hp<sup>3</sup> 2.0L EcoBoost<sup>1</sup> teams with a SelectShift automatic.<sup>1</sup>

With Fusion, the choice is always yours.



### 2.5L iVCT I-4

6-speed SelectShift automatic  
175 horsepower

### 1.5L EcoBoost

6-speed SelectShift automatic  
with Auto Start-Stop Technology<sup>1</sup>  
181 horsepower

### 2.0L EcoBoost

6-speed SelectShift automatic  
240 horsepower<sup>3</sup>

SE. Bronze Fire Metallic Tinted Clearcoat. Available equipment.

<sup>1</sup>Available feature. <sup>2</sup>EPA-estimated rating: 25 city/37 hwy/29 combined mpg, 1.5L EcoBoost automatic with Auto Start-Stop Technology. Actual mileage will vary. <sup>3</sup>Using 93-octane fuel.

2016 **FUSION+HYBRID**  
**FUSION ENERGY**  
ford.com





Dramatization. Actual mileage will vary.

## Efficient! With state-of-the-art hybrid technology.

Using both electric and gas power, Fusion Hybrid delivers exceptional ride and handling as it seamlessly switches between its electric motor and 2.0L Atkinson-cycle gasoline I-4 engine to help maximize fuel efficiency. In fact, it can operate in electric mode at speeds up to 85 mph, due to a state-of-the-art, lithium-ion battery.

**To help you drive more efficiently**, vibrant “Efficiency Leaves” grow on the next-generation SmartGauge® with EcoGuide instrument cluster. The higher your driving efficiency, the more lush your green leaves – giving you instant feedback.

**Recharging the battery as you drive**, the Regenerative Braking System captures over 90% of the brake energy and uses it to help recharge the battery. Even when braking, you’re moving forward in a Fusion Hybrid.



*Hybrid SE. Magnetic. Available equipment.*

<sup>1</sup>EPA-estimated rating: 44 city/41 hwy/42 combined mpg, Hybrid. Actual mileage will vary.

2016 **FUSION+HYBRID**  
**FUSION ENERGY**  
ford.com



## Flexible. With the option to plug in or not.

With a large-capacity, state-of-the-art, lithium-ion battery and 2.0L Atkinson-cycle gasoline engine, Fusion Energi Plug-In Hybrid gives you the additional choice of plugging in. As you drive, it can decide whether to run only on battery power or to turn on its gas engine as needed.

**An EPA-estimated rating of 95 city MPGe,<sup>1</sup>** a gas-plus-electric driving range of 550 miles,<sup>2</sup> and an all-electric driving range of 19 miles.<sup>2</sup> Fusion Energi may run all-electric and use no gasoline at all on short commutes – even while cruising at highway speeds.

**Recharge at home** in about 7 hours using its illuminated charge port and the standard 120V convenience cord. Shorten that time to about 2.5 hours using a Ford-recommended AeroVironment™ 240-volt home charging station<sup>3</sup> (shown below). This UL-listed, weather-resistant portable charging station is easy to take with you if you decide to relocate. A hard-wired station is also available.

**Easily monitor and schedule charging,** at home or at one of the growing number of public charging stations near you, with our MyFord® Mobile app<sup>4</sup> (shown below) and website (myfordmobile.com). Both feature a charging station locator powered by PlugShare.<sup>®</sup>

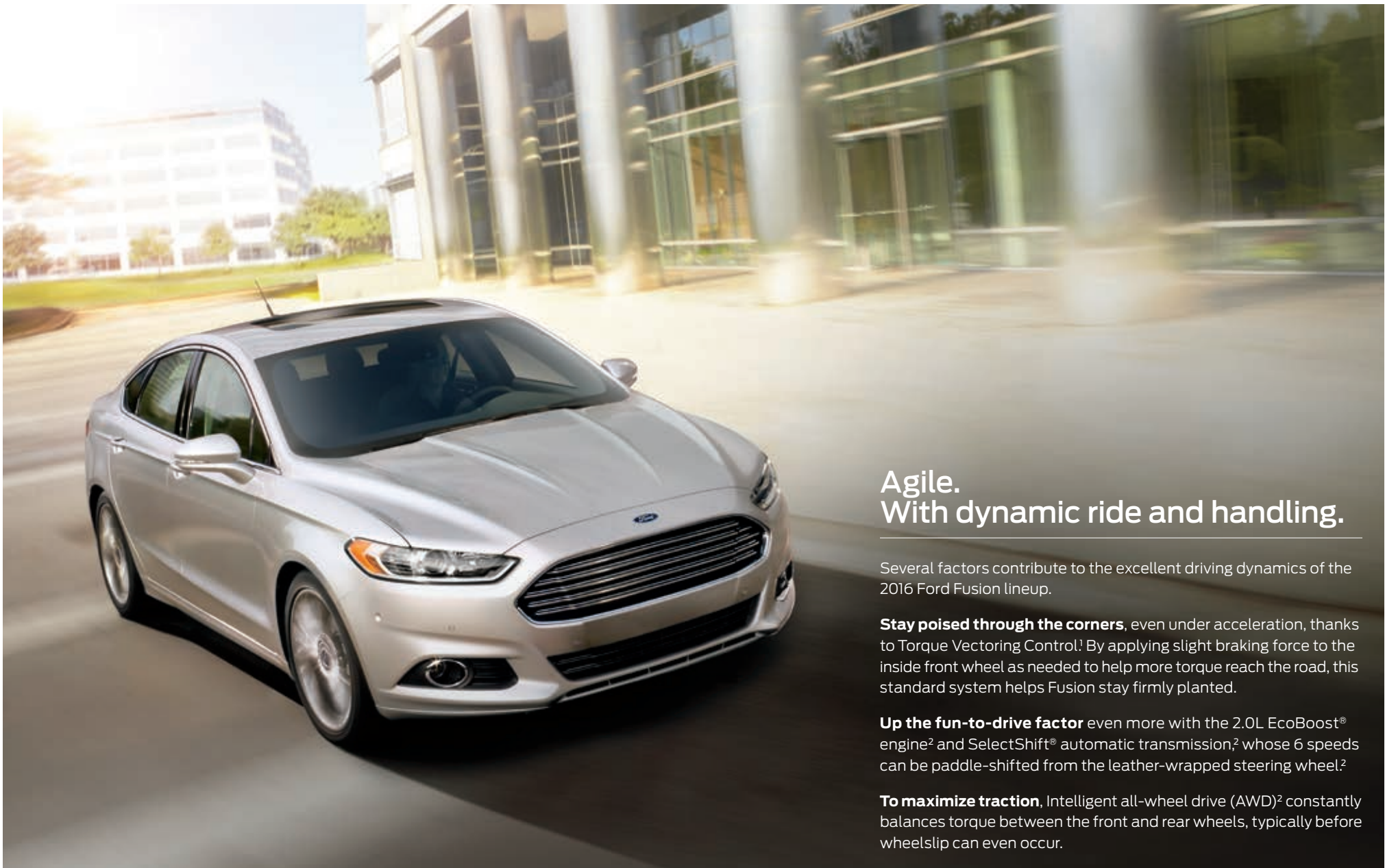


*Fusion Energi Titanium. Ruby Red Metallic Tinted Clearcoat. Available equipment.*

<sup>1</sup>EPA-estimated rating of 95 city/81 hwy/88 combined MPGe. Actual mileage will vary. MPGe is the EPA equivalent measure of gasoline fuel efficiency for electric mode operation. <sup>2</sup>EPA-estimated rating of 40 city/36 hwy/38 combined mpg, 14.0-gallon fuel tank; 19 miles electric. Range calculation based on [www.fueleconomy.gov](http://www.fueleconomy.gov). Actual range varies with conditions such as external elements, driving behaviors, vehicle maintenance and lithium-ion battery age. <sup>3</sup>Available feature. To begin the process, call 1-888-219-6747 or visit [evsolutions.com/ford](http://evsolutions.com/ford). Charging stations are available with or without full installation services by AeroVironment. <sup>4</sup>MyFord Mobile subscription complimentary for 5 years from the vehicle sale date as recorded by the dealer. Subscription fees apply after 5 years. MyFord Mobile requires a compatible 2.5G independent cellular network. Evolving technology and cellular networks may affect future availability and functionality.

2016 **FUSION+HYBRID**  
**FUSION ENERGI**  
ford.com





## Agile. With dynamic ride and handling.

Several factors contribute to the excellent driving dynamics of the 2016 Ford Fusion lineup.

**Stay poised through the corners**, even under acceleration, thanks to Torque Vectoring Control!<sup>1</sup> By applying slight braking force to the inside front wheel as needed to help more torque reach the road, this standard system helps Fusion stay firmly planted.

**Up the fun-to-drive factor** even more with the 2.0L EcoBoost<sup>®</sup> engine<sup>2</sup> and SelectShift<sup>®</sup> automatic transmission,<sup>2</sup> whose 6 speeds can be paddle-shifted from the leather-wrapped steering wheel.<sup>2</sup>

**To maximize traction**, Intelligent all-wheel drive (AWD)<sup>2</sup> constantly balances torque between the front and rear wheels, typically before wheelslip can even occur.



TORQUE VECTORING CONTROL

PADDLE



SHIFTERS<sup>2</sup>

AWD<sup>2</sup>



TRACTION

*Titanium. Ingot Silver. Available equipment.*

<sup>1</sup>Remember that even advanced technology cannot overcome the laws of physics. It's always possible to lose control of a vehicle due to inappropriate driver input for the conditions. <sup>2</sup>Available feature.

2016 **FUSION+HYBRID**  
**FUSION ENERGY**  
ford.com





## Gratifying. Enjoy its finely crafted comforts.

Relax in supportive, leather-trimmed, 10-way power, heated front seats! Recharge your devices with a convenient 110-volt power outlet!<sup>1</sup>

**Enjoy the sound** from a well-balanced, 12-speaker Audio System from Sony,<sup>®1</sup> as well as the peace from acoustic underbody shields and sound-absorption material.

**Your sense of responsibility** is also satisfied inside Fusion. Nearly 40 recycled 16-oz. plastic bottles go into the EcoCloth seats on select models, while recycled material is used for the injection-molded splash shields and other underbody components.

**Set the ambient lighting<sup>1</sup>** to your choice of 7 hues to bring it all together.



SE. Dune leather trim. Luxury Package. Available equipment.

<sup>1</sup>Available feature.

2016 **FUSION+HYBRID**  
**FUSION ENERGY**  
ford.com



## Personalized. Command it with your voice.

Voice-activated SYNC<sup>®1</sup> technology helps you keep your eyes on the road and hands on the wheel. SYNC. Say the word.

- **Hands-free calling** lets you make a call with a simple push of a button along with the sound of your voice.
- **Automatic phone book download** transfers the names and numbers in your compatible phone automatically, once paired.
- **Voice-activated music commands** let you say what music you want to hear and listen to it easily with voice-activated search, or say "Bluetooth<sup>®</sup> audio" to stream content from your phone.
- **SYNC AppLink<sup>™2</sup>** lets you control some of your favorite compatible mobile apps with your voice.
- **911 Assist<sup>®3</sup>** is a convenient no-charge feature that allows you to connect your compatible cell phone to help call 911, even if you can't.

Upgrade to SYNC with MyFord Touch.<sup>®1,4</sup>

- **An LCD screen** lets you easily read and control the things you want.
- **Voice-activated navigation<sup>4</sup>** features voice-recognition technology that lets you say commands as conversational as "find a restaurant." The system then helps guide you to your destination with audible turn-by-turn directions.
- **Voice control climate** lets you use your voice to adjust the climate, so you can stay comfortable without having to lift a finger.

| SYNC

*Titanium. Charcoal Black leather trim with perforated inserts.  
SYNC with MyFord Touch. Available equipment.*



<sup>1</sup>Driving while distracted can result in loss of vehicle control. Only use SYNC/MyFord Touch/other devices, even with voice commands, when it is safe to do so. Some features may be locked out while the vehicle is in gear. Not all features are compatible with all phones. <sup>2</sup>Available feature. SYNC AppLink is available on select models and compatible with select smartphone platforms. SYNC AppLink is not compatible with MyFord Touch. Commands may vary by phone and AppLink software. <sup>3</sup>The vehicle's electrical system (including the battery), the wireless service provider's signal and a connected mobile phone must all be available and operating for 911 Assist to function properly. These systems may become damaged in a crash. The paired mobile phone must be connected to SYNC, and the 911 Assist feature enabled, in order for 911 to be dialed. When the feature is ON, 911 Assist uses your paired and connected mobile phone to assist occupants to contact emergency services by dialing 911 if your airbag deploys or, on certain vehicles, if the emergency fuel pump shut-off is activated. <sup>4</sup>Available feature.

2016 FUSION+HYBRID  
FUSION ENERGY  
ford.com







## Entertaining. Connect with your world.

**SiriusXM® Satellite Radio** welcomes you to the World of SiriusXM.<sup>1</sup> Enjoy more than 150 channels including commercial-free music, plus live sports, news and exclusive entertainment, with a 6-month trial subscription to the All Access package included with your new vehicle. You'll hear every channel available, plus you can listen online and on the SiriusXM app.<sup>1</sup>

**Navigation<sup>2</sup> with SiriusXM Traffic and Travel Link<sup>®</sup>** includes a 5-year complimentary SiriusXM Traffic and Travel Link<sup>1</sup> trial subscription. Global Positioning System (GPS) technology is combined with 3-D mapping and provides voice-guided turn-by-turn directions. With SiriusXM Traffic and Travel Link, you'll get detailed traffic information, plus current and forecasted weather, gas station locations and prices, sports scores and schedules, and movie theater locations with show listings and times.

**((SiriusXM))**

*Titanium. SYNC® with MyFord Touch® Available equipment.*



2016 **FUSION+HYBRID**  
**FUSION ENERGY**  
ford.com

<sup>1</sup>SiriusXM Satellite Radio, SiriusXM Traffic and SiriusXM Travel Link subscriptions are sold separately or as a package by SiriusXM after your trial period, and are continuous until you call SiriusXM at 1-866-635-2349 to cancel. If you decide to continue service after your trial, the subscription plan you choose will automatically renew thereafter and you will be charged according to your chosen payment method at then-current rates. Fees and taxes apply. All fees and programming subject to change. See Customer Agreement for complete terms and more information at [www.siriusxm.com](http://www.siriusxm.com). <sup>2</sup>Available feature.



## Advanced. To help locate your sweet spot.

With its available driver-assist technologies, Fusion can help in traffic, with parallel parking and more.

**Maintain your lane** with help from our Lane-Keeping System.<sup>1,2</sup> It can detect lane markings with a forward-facing camera and send vibration pulses to the steering wheel. If needed, it can apply steering torque to prompt you to steer back toward center.

**Make parallel parking easier** with active park assist.<sup>1</sup> This system not only helps you find a spot, it actually steers the vehicle into place while you control the gear shifter, and brake and accelerator pedals.

**Get a heads-up** from adaptive cruise control and collision warning with brake support.<sup>1</sup> This system helps maintain your choice of 4 preset gaps from the vehicle in front of you and can alert you to a potential collision. If one is detected, it flashes a warning on the windshield, sounds an alarm, and preps the braking system to provide full responsiveness when you do brake.

**Stay alert to traffic detected in blind spots** as you drive forward, or traffic nearing either side of the vehicle as you slowly back up, thanks to BLIS<sup>®</sup> (Blind Spot Information System) with cross-traffic alert.<sup>1</sup> It helps warn you using lights embedded in the sideview mirrors.<sup>3</sup>

<sup>1</sup>Available feature. Driver-assist features are supplemental and do not replace the driver's attention, judgment and need to control the vehicle.

<sup>2</sup>Lane-Keeping System does not control steering. <sup>3</sup>BLIS replaces standard integrated blind spot mirrors.



## Stable. When it's needed most.

Rest assured that Fusion is engineered to bring stability to your journey. Its achievements include both the government's highest possible safety rating and a Top Safety Pick from the Insurance Institute for Highway Safety (IIHS).

**8 standard airbags** join inflatable 2nd-row safety belts<sup>1</sup> (in the rear outboard seating positions) inside.

**To help ensure proper tire inflation**, the standard Tire Pressure Monitoring System (TPMS) alerts you when any tire's pressure is low, giving you time to get assistance if needed.

**Helping to keep things stable**, particularly in inclement weather, is standard AdvanceTrac<sup>®</sup> electronic stability control.<sup>2</sup>



SAFETY RATING<sup>3</sup>

2015 IIHS



TOP SAFETY PICK

INFLATABLE



2ND-ROW SAFETY BELTS<sup>1</sup>

*Titanium. White Platinum Metallic Tri-coat. Available equipment.*

<sup>1</sup>Available feature. <sup>2</sup>Remember that even advanced technology cannot overcome the laws of physics. It's always possible to lose control of a vehicle due to inappropriate driver input for the conditions.

<sup>3</sup>Ratings based on Overall and Frontal Crash tests. Government 5-star Safety Ratings are part of the U.S. Department of Transportation's New Car Assessment Program ([www.safercar.gov](http://www.safercar.gov)).

2016 **FUSION+HYBRID**  
**FUSION ENERGY**  
ford.com



# Fusion Specifications



## Engines/EPA-Estimated Ratings<sup>1</sup> & Dimensions

### 2.5L iVCT I-4

175 hp @ 6,000 rpm  
175 lb.-ft. of torque @ 4,500 rpm  
6-speed SelectShift<sup>®</sup> automatic  
22 city/34 hwy/26 combined mpg

### 1.5L EcoBoost<sup>®</sup> I-4

181 hp @ 6,000 rpm  
185 lb.-ft. of torque @ 4,320 rpm  
6-speed SelectShift automatic  
24 city/36 hwy/28 combined mpg  
6-speed SelectShift automatic with Auto Start-Stop Technology  
25 city/37 hwy/29 combined mpg

### 2.0L EcoBoost I-4

240 hp @ 5,550 rpm<sup>2</sup>  
270 lb.-ft. of torque @ 3,000 rpm  
6-speed SelectShift automatic  
FWD 22 city/33 hwy/26 combined mpg  
AWD 22 city/31 hwy/25 combined mpg

### 2.0L iVCT Atkinson-Cycle I-4 Hybrid with Permanent-Magnet AC-Synchronous Electric Motor

Total combined horsepower: 188  
Electronically controlled continuously variable transmission (eCVT)  
44 city/41 hwy/42 combined mpg

### 2.0L iVCT Atkinson-Cycle I-4 Plug-In Hybrid with Permanent-Magnet AC-Synchronous Electric Motor

Total combined horsepower: 195 charge depletion mode  
188 charge sustain mode  
Electronically controlled continuously variable transmission (eCVT)  
40 city/36 hwy/38 combined mpg (gasoline only)  
95 city/81 hwy/88 combined MPGe

	Fusion, Hybrid/Fusion Energi
<b>Exterior</b>	
Wheelbase	112.2"
Length	191.8"
Height	58.2"/58.0"
Width – Mirrors folded	75.2"
Width – Including mirrors	83.5"
<b>Interior</b>	Front/Rear
Head room	39.2"/37.8"
Shoulder room	57.8"/56.9"
Hip room	55.0"/54.4"
Leg room	44.3" (max.)/38.3"
<b>Capacities (cu. ft.)</b>	Fusion, Hybrid/Fusion Energi
Passenger volume	102.8
Luggage capacity	16.0, 12.0/8.2
Total interior volume	118.8, 114.8/111.0
Fuel tank (gal.)	
FWD/AWD	16.5/17.5
Hybrid/Fusion Energi	13.5/14.0

## Standard Features

### Mechanical

4-wheel disc Anti-Lock Brake System (ABS)  
Electric parking brake  
Electric power-assisted steering  
Front and rear stabilizer bars  
Front-wheel drive (FWD)  
Hill start assist  
Suspension – Front: independent MacPherson strut; rear: independent integral link  
Torque Vectoring Control

### Interior

12-volt powerpoints (3)  
Dome light with map lights  
Driver and front-passenger sun visors with illuminated vanity mirrors  
Ford SYNC<sup>®</sup> voice-activated, in-vehicle connectivity system  
Full center console with armrest and storage  
Illuminated, lockable glove compartment  
Message center with trip computer  
Power door locks  
Power windows with global open/close and one-touch-up/-down feature  
Steering wheel-mounted cruise, audio and 5-way MyFord<sup>®</sup> controls  
Tilt/telescoping steering column

### Exterior

Automatic halogen projector beam headlamps  
Chrome grille  
Configurable daytime running lamps  
Easy Fuel<sup>®</sup> capless fuel filler  
LED taillamps  
Rear-window defroster  
Solar-tinted glass  
Speed-sensitive windshield wipers

### Safety & Security

Personal Safety System<sup>™</sup> for driver and front passenger includes dual-stage front airbags<sup>3</sup>; safety belt pretensioners, safety belt energy-management retractors, safety belt usage sensors, driver's seat position sensor, crash severity sensor, restraint control module and Front-Passenger Sensing System  
Driver and front-passenger knee airbags<sup>3</sup>  
Front-seat side airbags<sup>3</sup>  
Side-curtain airbags<sup>3</sup>  
3-point safety belts for all 5 seating positions  
AdvanceTrac<sup>®</sup> electronic stability control with brake-actuated traction control  
Anti-theft perimeter alarm  
Belt-Minder<sup>®</sup> front safety belt reminder  
Child-safety rear door locks  
Emergency in-trunk release handle  
Illuminated Entry System  
LATCH – Lower Anchors and Tether Anchors for Children MyKey<sup>®</sup>  
Rear view camera  
SecuriLock<sup>®</sup> Passive Anti-Theft System  
SOS Post-Crash Alert System<sup>™</sup>  
Tire Pressure Monitoring System (excludes spare)

<sup>1</sup>Dimensions may vary by trim level.

<sup>2</sup>Actual mileage will vary. <sup>3</sup>Using 93-octane fuel. <sup>3</sup>Always wear your safety belt and secure children in the rear seat.



SE. Ebony cloth trim with red stitching. SE Appearance Package. Available equipment.

MyFord 4.2" color LCD center stack display.

60/40 split fold-flat rear seat.



16" Painted Aluminum  
Standard: S



17" Sparkle Silver-Painted  
Aluminum  
Standard: SE



18" Ebony Black Aluminum  
Optional: SE



18" Premium Luster Nickel-  
Painted Aluminum  
Optional: SE



18" 5-Spoke Premium  
Black-Painted Aluminum  
Optional; requires  
SE Appearance Package



18" 5-Spoke Premium  
Painted Aluminum  
Included:  
S & SE Appearance Packages



18" 5-Spoke Machined  
and Painted Aluminum  
Included: Terracotta Package

## S

### Equipment Group 100A

Includes all standard features, plus:

#### Mechanical

2.5L iVCT I-4 engine  
6-speed SelectShift® automatic transmission with thumb switch operation  
Compact spare

#### Seating

6-way manual driver's seat  
4-way manual front-passenger seat  
4-way adjustable front head restraints  
60/40 split fold-flat spring-assisted rear seat  
Cloth seating

#### Interior

AM/FM stereo/single-CD player with MP3 capability and 4 speakers  
Cruise control  
Day/night rearview mirror  
Front carpeted floor mats  
Single-zone manual air conditioning  
SYNC® with MyFord® voice-activated, in-vehicle connectivity system with 4.2" color LCD screens in instrument cluster and center stack, SYNC AppLink™ and media hub with USB port

#### Exterior

16" painted aluminum wheels with 215/60R16 all-season tires  
Black rocker moldings  
Body-color door handles  
Body-color, power sideview mirrors with integrated blind spot mirrors  
Single exhaust with bright tip

#### Available Equipment Group

**Equipment Group 101A – S Appearance Package** includes 18" 5-spoke premium painted aluminum wheels with 235/45R18 all-season tires, rear decklid spoiler, fog lamps, and body-color rocker moldings

#### Available Options

All-weather floor mats  
Inflatable rear safety belts in outboard seating positions  
Paint Protection Film by 3M covers the edges of hood, front fascia, lower rocker panels, door edges, and rear fascia edge  
Remote Start System  
Trunk cargo net

## SE

### Equipment Group 200A

Includes select S features, plus:

#### Seating

10-way power driver's seat including power lumbar  
6-way power front-passenger seat with fore/aft/up/down adjustment and power recline  
Rear-seat fold-down center armrest with 2 cupholders

#### Interior

AM/FM stereo/single-CD player with MP3 capability and 6 speakers  
Compass  
Outside temperature display  
Rear carpeted floor mats  
Rear climate ducts  
SiriusXM® Satellite Radio with 6-month trial subscription

#### Exterior

17" Sparkle Silver-painted aluminum wheels with 235/50R17 all-season tires  
Body-color, power, heated sideview mirrors with security approach lamps and integrated turn signal indicators and blind spot mirrors  
Body-color rocker moldings  
SecuriCode™ invisible keypad

#### Available Equipment Groups

**Equipment Group 201A – SE Appearance Package** includes 18" 5-spoke premium painted aluminum wheels, rear decklid spoiler, fog lamps, leather-wrapped steering wheel, and Ebony EcoCloth interior with contrasting red stitching on center console and seats (n/a with Auto Start-Stop Technology)

**Equipment Group 202A – Luxury Package** includes 1.5L EcoBoost® I-4 engine; driver's seat memory feature; heated front seats; leather-trimmed seats, steering wheel and shift knob; auto-dimming rearview mirror; fog lamps; chrome moldings around door windows; and power, heated sideview mirrors with memory, security approach lamps, auto-dimming driver's side, and integrated turn signal indicators and blind spot mirrors

#### Available Options & Packages

1.5L EcoBoost I-4 engine with 6-speed SelectShift automatic transmission  
1.5L EcoBoost I-4 engine with 6-speed SelectShift automatic transmission and Auto Start-Stop Technology (requires 17" wheels; n/a with 201A or Terracotta Package)

2.0L EcoBoost I-4 engine and 6-speed SelectShift automatic transmission with paddle shifters; includes dual integrated bright exhaust outlets (requires 201A or 202A and 18" wheels)

18" 5-spoke premium black-painted aluminum wheels (requires 201A)

18" Ebony Black aluminum wheels (requires 202A; n/a with Terracotta Package)

18" premium Luster Nickel-painted aluminum wheels (requires 202A; n/a with Terracotta Package)

18" summer-only tires<sup>1</sup> (requires 201A with 1.5L engine or 2.0L engine; n/a with Terracotta Package)

Active park assist with Forward Sensing System (requires 202A and SE Technology Package)

Adaptive cruise control and collision warning with brake support (requires 202A, 2.0L engine, 18" wheels and SE Technology Package)

All-weather floor mats

**Driver Assist Package** includes BLIS® (Blind Spot Information System) with cross-traffic alert, Lane-Keeping System, auto high beams, rain-sensing windshield wipers, and 110-volt power outlet (requires 202A and SE Technology Package)

Heated steering wheel (requires 202A and SE Technology Package)

Inflatable rear safety belts in outboard seating positions

Intelligent Access with push-button start and Remote Start System (requires 202A and SE Technology Package)

Intelligent all-wheel drive (AWD) (requires 201A or 202A, 2.0L EcoBoost engine and 18" wheels)

Paint Protection Film by 3M covers the edges of hood, front fascia, lower rocker panels, door edges, and rear fascia edge

Power moonroof with universal garage door opener

Premium carpeted front and rear floor mats, plus trunk mat (n/a with Terracotta Package)

Remote Start System

Reverse Sensing System

**SE Cold Weather Package** includes all-weather floor mats, heated cloth front seats and Remote Start System (requires 200A or 201A)

**SE Technology Package** includes SYNC with MyFord Touch® voice-activated, in-vehicle connectivity system with SYNC Services<sup>2</sup>; 2 configurable 4.2" color LCD screens in instrument cluster, 8" color LCD touch screen in center stack, and media hub with USB port and SD card reader; 10 speakers; Reverse Sensing System; and dual-zone electronic automatic temperature control

**Terracotta Package** includes Terracotta premium leather-trimmed seats and vinyl door-trim inserts, premium carpeted front and rear floor mats, and 18" 5-spoke machined and painted aluminum wheels (requires 202A; n/a with Auto Start-Stop Technology)

Trunk cargo net

Voice-activated Navigation System with integrated SiriusXM Traffic and Travel Link® with 5-year subscription (requires SE Technology Package)

<sup>1</sup>Ford does not recommend using summer tires when temperatures drop to approximately 40°F or below (depending on tire wear and environmental conditions) or in snow/ice conditions. If the vehicle must be driven in these conditions, Ford recommends using all-season or winter tires. <sup>2</sup>SYNC Services varies by trim level and model year and may require a subscription. Traffic alerts and turn-by-turn directions available in select markets. Message and data rates may apply. Ford Motor Company reserves the right to change or discontinue this product service at any time without prior notification or incurring any future obligation.

# Titanium

## Equipment Group 300A

Includes select SE features, plus:

### Mechanical

2.0L EcoBoost® I-4 engine

6-speed SelectShift® automatic transmission with steering wheel-mounted paddle shifters

### Seating

Leather-trimmed Sport seats with 10-way power, heated front seats and driver's side memory with 3 settings

### Interior

Aluminum brake and accelerator pedal covers

Aluminum front door-sill plates

Ambient lighting

Audio System from Sony® with AM/FM stereo/single-CD player with MP3 capability, 12 speakers in 10 locations and HD Radio™ Technology

Auto-dimming rearview mirror

Dual-zone electronic automatic temperature control

Intelligent Access with push-button start and Remote Start System

Leather-wrapped steering wheel and shift knob

SYNC® with MyFord Touch® voice-activated, in-vehicle connectivity system with SYNC Services<sup>1</sup>; 2 configurable 4.2" color LCD screens in instrument cluster, 8" color LCD touch screen in center stack, and media hub with USB port and SD card reader

### Exterior

18" polished face aluminum wheels with Flash Gray-painted pockets and 235/45R18 all-season tires

Body-color door handles with chrome inserts

Body-color, power, heated sideview mirrors with memory, security approach lamps, auto-dimming driver's side, and integrated turn signal indicators and blind spot mirrors

Dual integrated bright exhaust outlets

Fog lamps

Rear decklid spoiler

Reverse Sensing System

### Available Options & Packages

18" summer-only tires<sup>2</sup> (requires AWD; n/a with Terracotta Package)

19" H-spoke dark stainless-painted aluminum wheels and 235/40R19 all-season tires (n/a with Terracotta Package)

Active park assist with Forward Sensing System

Adaptive cruise control and collision warning with brake support

All-weather floor mats

Cooled front seats

**Driver Assist Package** includes BLIS® (Blind Spot Information System) with cross-traffic alert, Lane-Keeping System, auto high beams, rain-sensing windshield wipers, and 110-volt power outlet

Heated steering wheel

Inflatable rear safety belts in outboard seating positions

Intelligent all-wheel drive (AWD)

Paint Protection Film by 3M covers the edges of hood, front fascia, lower rocker panels, door edges, and rear fascia edge

Power moonroof with universal garage door opener

Premium carpeted front and rear floor mats, plus trunk mat (n/a with Terracotta Package)

**Terracotta Package** includes Terracotta premium leather-trimmed seats and vinyl door-trim inserts, premium carpeted front and rear floor mats, and 18" 5-spoke machined and painted aluminum wheels

Trunk cargo net

Voice-activated Navigation System with integrated SiriusXM® Traffic and Travel Link® with 5-year subscription



Terracotta premium leather trim with perforated inserts. Terracotta Package. Available equipment.

Intelligent Access with push-button start.

Aluminum brake and accelerator pedal covers.

Audio System from Sony with HD Radio Technology and iTunes® tagging.

Steering wheel-mounted paddle shifters.



18" Polished Face Aluminum with Flash Gray-Painted Pockets  
Standard



18" 5-Spoke Machined and Painted Aluminum  
Included: Terracotta Package



19" H-Spoke Dark Stainless-Painted Aluminum  
Optional

<sup>1</sup>SYNC Services varies by trim level and model year and may require a subscription. Traffic alerts and turn-by-turn directions available in select markets. Message and data rates may apply. Ford Motor Company reserves the right to change or discontinue this product service at any time without prior notification or incurring any future obligation. <sup>2</sup>Ford does not recommend using summer tires when temperatures drop to approximately 40°F or below (depending on tire wear and environmental conditions) or in snow/ice conditions. If the vehicle must be driven in these conditions, Ford recommends using all-season or winter tires.

## Fusion Hybrid



Next-generation SmartGauge with EcoGuide instrument cluster. Available equipment.

110-volt power outlet<sup>1</sup>

Climate control screen on SYNC with MyFord Touch.<sup>1</sup>

"Brake Coach" on SmartGauge with EcoGuide instrument cluster.



17" 15-Spoke Sparkle Silver-painted Aluminum  
Standard: Hybrid S & Hybrid SE



17" 10-Spoke Painted Aluminum  
Standard: Hybrid Titanium  
Included: Appearance Package

## Hybrid S

### Equipment Group 400A

Includes select S features, plus:

#### Mechanical

2.0L iVCT Atkinson-cycle I-4 HEV engine with permanent-magnet AC-synchronous electric motor  
Electronically controlled continuously variable transmission (eCVT)

Lithium-Ion Battery Pack System – 1.4-kWh capacity

Regenerative Braking System

Tire mobility kit in lieu of spare tire

#### Seating

Cloth seating

#### Interior

Active noise cancellation

AM/FM stereo/single-CD player with MP3 capability and 6 speakers

## Hybrid SE

### Equipment Group 500A

Includes select Hybrid S features, plus:

#### Seating

10-way power driver's seat including power lumbar

6-way power front-passenger seat with fore/aft/up/down adjustment and power recline

Rear-seat fold-down center armrest with 2 cupholders

Unique EcoCloth seats with REPREVE<sup>®</sup> fabric

#### Interior

Compass

Outside temperature display

Rear carpeted floor mats

Rear climate ducts

SiriusXM<sup>®</sup> Satellite Radio with 6-month trial subscription

#### Exterior

Body-color, power, heated sideview mirrors with security approach lamps and integrated turn signal indicators and blind spot mirrors

Body-color rocker moldings

SecuriCode<sup>™</sup> invisible keypad

#### Available Equipment Groups

##### Equipment Group 501A – Appearance Package

Includes 17" 10-spoke painted aluminum wheels, rear decklid spoiler, fog lamps, leather-wrapped steering wheel, and Ebony EcoCloth interior with contrasting red stitching on center console and seats

**Equipment Group 502A – Luxury Package** includes driver's seat memory feature; heated front seats; leather-trimmed seats, steering wheel and shift knob; auto-dimming rearview mirror; fog lamps; chrome moldings around door windows; and power, heated sideview mirrors with memory, security approach lamps, auto-dimming driver's side, and integrated turn signal indicators and blind spot mirrors

Dual-zone electronic automatic temperature control

Front carpeted floor mats

SmartGauge<sup>®</sup> with EcoGuide

#### Exterior

17" 15-spoke Sparkle Silver-painted aluminum wheels with P225/50R17 all-season tires

Single bright exhaust tip

#### Available Options

All-weather floor mats

Inflatable rear safety belts in outboard seating positions

Paint Protection Film by 3M covers the edges of hood, front fascia, lower rocker panels, door edges, and rear fascia edge

Remote Start System

Trunk cargo net

#### Available Options & Packages

Active park assist with Forward Sensing System (requires 502A and SE Technology Package)

Adaptive cruise control and collision warning with brake support (requires SE Technology Package; n/a on 500A)

All-weather floor mats

**Driver Assist Package** includes BLIS<sup>®</sup> (Blind Spot Information System) with cross-traffic alert, Lane-Keeping System, auto high beams, 110-volt power outlet and rain-sensing windshield wipers (requires 502A and SE Technology Package)

Heated steering wheel (requires 502A and SE Technology Package)

Inflatable rear safety belts in outboard seating positions

Intelligent Access with push-button start and Remote Start System (requires 502A and SE Technology Package)

Paint Protection Film by 3M covers the edges of hood, front fascia, lower rocker panels, door edges, and rear fascia edge

Power moonroof with universal garage door opener

Premium carpeted front and rear floor mats, plus trunk mat (n/a with Terracotta Package)

Remote Start System

Reverse Sensing System

**SE Cold Weather Package** includes all-weather floor mats, heated cloth front seats and Remote Start System (n/a on 502A)

**SE Technology Package** includes SYNC<sup>®</sup> with MyFord Touch<sup>®</sup> voice-activated, in-vehicle connectivity system with SYNC Services<sup>2</sup>; 2 configurable 4.2" color LCD screens in instrument cluster, 8" color LCD touch screen in center stack, and media hub with USB port and SD card reader; 10 speakers; Reverse Sensing System; and 110-volt power outlet

**Terracotta Package** includes Terracotta premium leather-trimmed seats and vinyl door-trim inserts, and premium carpeted front and rear floor mats (requires 502A)

Trunk cargo net

Voice-activated Navigation System with integrated SiriusXM Traffic and Travel Link<sup>®</sup> with 5-year subscription (requires SE Technology Package)

## Hybrid Titanium

### Equipment Group 600A

Includes select Hybrid SE features, plus:

#### Seating

Leather-trimmed Sport seats with 10-way power, heated front seats and driver's side memory with 3 settings

#### Interior

110-volt power outlet

Aluminum brake and accelerator pedal covers

Aluminum front door-sill plates

Ambient lighting

Audio System from Sony<sup>®</sup> with AM/FM stereo/single-CD player with MP3 capability, 12 speakers in 10 locations and HD Radio<sup>™</sup> Technology

Auto-dimming rearview mirror

Intelligent Access with push-button start and Remote Start System

Leather-wrapped steering wheel and shift knob

SYNC with MyFord Touch voice-activated, in-vehicle connectivity system with SYNC Services<sup>2</sup>; 2 configurable 4.2" color LCD screens in instrument cluster, 8" color LCD touch screen in center stack, and media hub with USB port and SD card reader

#### Exterior

17" 10-spoke painted aluminum wheels

Body-color door handles with chrome inserts

Body-color, power, heated sideview mirrors with memory, security approach lamps, auto-dimming driver's side, and integrated turn signal indicators and blind spot mirrors

Fog lamps

Rear decklid spoiler

Reverse Sensing System

#### Available Options & Packages

Active park assist with Forward Sensing System

Adaptive cruise control and collision warning with brake support

All-weather floor mats

Cooled front seats

**Driver Assist Package** includes BLIS (Blind Spot Information System) with cross-traffic alert, Lane-Keeping System, auto high beams, and rain-sensing windshield wipers

Heated steering wheel

Inflatable rear safety belts in outboard seating positions

Paint Protection Film by 3M covers the edges of hood, front fascia, lower rocker panels, door edges, and rear fascia edge

Power moonroof with universal garage door opener

Premium carpeted front and rear floor mats, plus trunk mat (n/a with Terracotta Package)

#### Terracotta Package

Trunk cargo net

Voice-activated Navigation System with integrated SiriusXM Traffic and Travel Link with 5-year subscription

<sup>1</sup>Available feature. <sup>2</sup>SYNC Services varies by trim level and model year and may require a subscription. Traffic alerts and turn-by-turn directions available in select markets. Message and data rates may apply. Ford Motor Company reserves the right to change or discontinue this product service at any time without prior notification or incurring any future obligation.

## Fusion Energi SE

Equipment Group 700A  
Includes select Hybrid SE features, plus:

### Mechanical

2.0L iVCT Atkinson-cycle I-4 PHEV engine with permanent-magnet AC-synchronous electric motor  
120-volt convenience charge cord  
EV Mode button with EV Now, EV Later and EV Auto  
Large-capacity Lithium-Ion Battery Pack System – 7.6-kWh capacity  
Tire mobility kit (in lieu of spare tire)

### Seating

6-way power front-passenger seat with fore/aft/up/down adjustment and power recline  
Leather-trimmed seats with heated front seats and driver's side memory with 3 settings

### Interior

10 speakers  
110-volt power outlet  
Leather-wrapped steering wheel and shift knob  
MyFord® Mobile app with 5-year service agreement  
SYNC® with MyFord Touch® voice-activated, in-vehicle connectivity system with SYNC Services<sup>1</sup>; 2 configurable 4.2" color LCD screens in instrument cluster, 8" color LCD touch screen in center stack, and media hub with USB port and SD card reader

### Exterior

17" 15-spoke Sparkle Silver-painted aluminum wheels with P225/50VR17 all-season tires  
Body-color, power, heated sideview mirrors with memory, security approach lamps, auto-dimming driver's side, and integrated turn signal indicators and blind spot mirrors  
External charge port with illuminated state-of-charge indicator  
Fog lamps  
Reverse Sensing System

### Available Options & Package

Active park assist with Forward Sensing System  
Adaptive cruise control and collision warning with brake support

All-weather floor mats  
Charge cord bag by THULE<sup>2</sup>  
Charge door decal

**Driver Assist Package** includes BLIS® (Blind Spot Information System) with cross-traffic alert, Lane-Keeping System, auto high beams, and rain-sensing windshield wipers  
Heated steering wheel  
Inflatable rear safety belts in outboard seating positions

Intelligent Access with push-button start and Remote Start System

Paint Protection Film by 3M covers the edges of hood, front fascia, lower rocker panels, door edges, and rear fascia edge  
Power moonroof with universal garage door opener  
Premium carpeted front and rear floor mats

Remote Start System

Trunk cargo net  
Voice-activated Navigation System with integrated SiriusXM® Traffic and Travel Link® with 5-year subscription

## Fusion Energi Titanium

Equipment Group 800A  
Includes select Fusion Energi SE features, plus:

### Seating

10-way power front-passenger seat

### Interior

Aluminum brake and accelerator pedal covers  
Aluminum front door-sill plates  
Ambient lighting  
Audio System from Sony® with AM/FM stereo/single-CD player with MP3 capability, 12 speakers in 10 locations and HD Radio™ Technology  
Intelligent Access with push-button start and Remote Start System

### Exterior

17" 10-spoke painted aluminum wheels  
Body-color door handles with chrome inserts  
Rear decklid spoiler

### Available Options & Package

Active park assist with Forward Sensing System  
Adaptive cruise control and collision warning with brake support

All-weather floor mats  
Charge cord bag by THULE<sup>2</sup>

Charge door decal

Cooled front seats

**Driver Assist Package** includes BLIS (Blind Spot Information System) with cross-traffic alert, Lane-Keeping System, auto high beams, and rain-sensing windshield wipers

Heated steering wheel

Inflatable rear safety belts in outboard seating positions

Paint Protection Film by 3M covers the edges of hood, front fascia, lower rocker panels, door edges, and rear fascia edge

Power moonroof with universal garage door opener

Premium carpeted front and rear floor mats

Trunk cargo net

Voice-activated Navigation System with integrated SiriusXM Traffic and Travel Link with 5-year subscription

## Fusion Energi Plug-In Hybrid



Titanium. Charcoal Black leather trim with perforated inserts. Available equipment.

Illuminated charge port.

Energy flow screen on SYNC with MyFord Touch.



17" 15-Spoke Sparkle Silver-Painted Aluminum  
Standard: Fusion Energi SE



17" 10-Spoke Painted Aluminum  
Standard: Fusion Energi Titanium



### Drive green for life.™

A rebate may be in your bright future. Ford customers who own a Fusion Hybrid or a Fusion Energi Plug-In Hybrid may be eligible for a \$750 rebate on a SunPower residential solar system that generates clean, solar energy for the home and for electric vehicle charging. Owners of C-MAX Hybrid, C-MAX Energi Plug-In Hybrid and Focus Electric may also be eligible. As Drive Green for Life's newest partner, the Sierra Club will receive a \$500 donation for each SunPower rooftop solar system installed through the program. For more information, contact SunPower Corporation at [sunpower.com/drivegreen](http://sunpower.com/drivegreen).

<sup>1</sup>SYNC Services varies by trim level and model year and may require a subscription. Traffic alerts and turn-by-turn directions available in select markets. Message and data rates may apply. Ford Motor Company reserves the right to change or discontinue this product service at any time without prior notification or incurring any future obligation. <sup>2</sup>Ford Licensed Accessory.



## Exteriors



White Platinum Metallic Tri-coat



Oxford White



Ingot Silver\*



Ruby Red Metallic Tinted Clearcoat



Bronze Fire Metallic Tinted Clearcoat



Deep Impact Blue\*



Tectonic\*



Magnetic\*



Guard\*



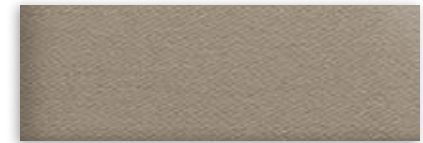
Shadow Black

\*Metallic.

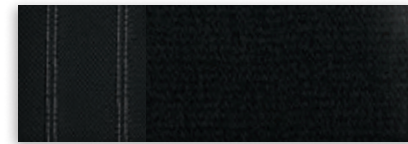
## Interiors



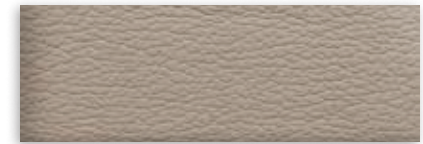
1 Medium Earth Gray Cloth



2 Dune Cloth



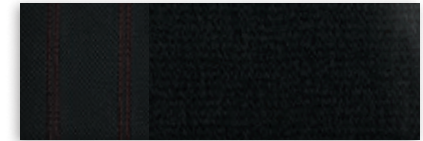
3 Ebony Cloth



4 Dune Leather



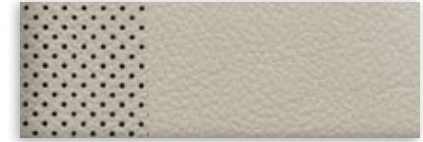
5 Charcoal Black Leather



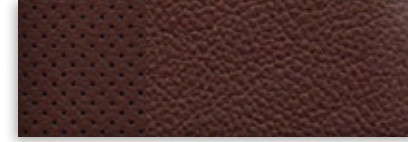
6 Ebony Cloth with Red Stitching



7 Charcoal Black Leather with Perforated Inserts



8 Medium Soft Ceramic Leather with Perforated Inserts



9 Terracotta Premium Leather with Perforated Inserts

Exteriors	Interiors																							
	S	SE				Titanium	Hybrid S	Hybrid SE			Hybrid Titanium	Fusion Energi SE	Fusion Energi Titanium											
White Platinum Metallic Tri-coat <sup>1</sup>		2	3	4	5	6	9	7	8	9	1	2	3	4	5	6	9	7	8	9	4	5	7	8
Oxford White	1	2	3	4	5	6	9	7	8	9	1	2	3	4	5	6	9	7	8	9	4	5	7	8
Ingot Silver	1	2	3	4	5	6	9	7	8	9	1	2	3	4	5	6	9	7	8	9	4	5	7	8
Ruby Red Metallic Tinted Clearcoat <sup>1</sup>	1	2	3	4	5	6	7	8	1	2	3	4	5	6	7	8	4	5	7	8	4	5	7	8
Bronze Fire Metallic Tinted Clearcoat <sup>1</sup>	1	2	3	4	5	6	9	7	8	9	1	2	3	4	5	6	9	7	8	9	4	5	7	8
Deep Impact Blue	1	2	3	4	5	6	7	8	1	2	3	4	5	6	7	8	4	5	7	8	4	5	7	8
Tectonic	1	2	3	4	5	6	9	7	8	9	1	2	3	4	5	6	9	7	8	9	4	5	7	8
Magnetic	1	2	3	4	5	6	9	7	8	9	1	2	3	4	5	6	9	7	8	9	4	5	7	8
Guard	1	2	3	4	5	6	7	8	1	2	3	4	5	6	7	8	4	5	7	8	4	5	7	8
Shadow Black	1	2	3	4	5	6	9	7	8	9	1	2	3	4	5	6	9	7	8	9	4	5	7	8

4, 5 Luxury Package on SE and Hybrid SE 6 Appearance Package on SE and Hybrid SE 9 Terracotta Package on SE, Titanium, Hybrid SE and Hybrid Titanium

<sup>1</sup>Additional charge.

Colors are representative only. See your dealer for actual paint/trim options.



*SE in Ruby Red Metallic Tinted Clearcoat accessorized with 18" Sparkle Nickel-painted aluminum wheels, molded splash guards, smoked side window deflectors and rear decklid spoiler*

*Illuminated door-sill plates*

*Roof rack and roof-mounted bike carrier by THULE®<sup>1</sup>*

*All-weather floor mats*

*Remote Access*

**Exterior**

- Charge door decal<sup>2</sup>
- Flat splash guards
- Full vehicle cover<sup>1</sup>
- Hood protector<sup>1</sup>
- Racks and carriers<sup>1</sup>
- Rear bumper protector
- Wheel lock kit

**Interior**

- Ash cup/coin holders
- Auto-dimming rearview mirror
- Cargo organizers and protectors
- Charge cord bag<sup>1,2</sup>
- Door-sill plates
- In-vehicle safe<sup>1</sup>
- Interior light kit
- Premium carpeted floor mats
- Tablet cradle<sup>1</sup>

**Electronics**

- Keyless entry keypad
- Remote start systems
- Reverse bumper-mounted warning sensor system<sup>1</sup>
- Vehicle Security System
- Wireless charging<sup>1</sup>



Go Further

[ford.com/fusion](http://ford.com/fusion)

Follow Ford:



**New Vehicle Limited Warranty.** We want your Ford Fusion ownership experience to be the best it can be. Under this warranty, your new vehicle comes with 3-year/36,000-mile bumper-to-bumper coverage, 5-year/60,000-mile Powertrain Warranty coverage, 5-year/60,000-mile safety restraint coverage, and 5-year/unlimited-mile corrosion (perforation) coverage – all with no deductible. Fusion unique electric components are covered during the Hybrid/Electric Unique Component Coverage, which lasts for 8 years or 100,000 miles, whichever occurs first. Please ask your Ford Dealer for a copy of this limited warranty.

**Roadside Assistance.** Covers your vehicle for 5 years or 60,000 miles, so you have the security of knowing that help may be only a phone call away should you run out of fuel, lock yourself out of the vehicle or need towing. Your Ford Dealer can provide complete details on all of these advantages.

**Ford Credit.** Get the ride you want. Whether you plan to lease or finance, you'll find the choices that are right for you at Ford Credit. Ask your Ford Dealer for details or check us out at [fordcredit.com](http://fordcredit.com).

**Ford Extended Service Plan.** For a purchase or lease, the Ford Extended Service Plan (ESP) gives you peace-of-mind protection designed to cover key vehicle components and protect you from the cost of unexpected repairs. Ask your dealer for a Ford ESP, the only service contract backed exclusively by Ford and honored at all Ford Lincoln dealerships.

**Insurance Services.** Get Ford Motor Company quality in your auto insurance. Our program offers industry-leading benefits and competitive rates. Call 1-877-367-3847, or visit us at [fordvip.com](http://fordvip.com) for a no-obligation quote. Insurance offered by American Road Services Company (in CA, American Road Insurance Agency), a licensed agency and subsidiary of Ford Motor Company.

**Ford Original Accessories** will be warranted for whichever provides you the greatest benefit: 24 months/unlimited mileage, or the remainder of your Bumper-to-Bumper 3-year/36,000-mile New Vehicle Limited Warranty. Ford Licensed Accessories (FLA) are warranted by the accessory manufacturer's warranty. FLA are designed and developed by the accessory manufacturer and have not been designed or tested to Ford Motor Company engineering requirements. Contact your Ford Dealer for details and/or a copy of all limited warranties.

Comparisons based on competitive models (Fusion class is Midsize Sedans; Fusion Hybrid class is Midsize Hybrid Sedans; Fusion Energi class is Midsize Plug-In Hybrid Sedans), publicly available information and Ford certification data at time of release. Vehicles may be shown with optional equipment. Features may be offered only in combination with other options or subject to additional ordering requirements/limitations. Dimensions shown may vary due to optional features and/or production variability. Information is provided on an "as is" basis and could include technical, typographical or other errors. Ford makes no warranties, representations, or guarantees of any kind, express or implied, including but not limited to, accuracy, currency, or completeness, the operation of the information, materials, content, availability, and products. Ford reserves the right to change product specifications, pricing and equipment at any time without incurring obligations. Your Ford Dealer is the best source of the most up-to-date information on Ford vehicles.

HD Radio is a proprietary trademark of iBiquity Digital Corp. iTunes is a trademark of Apple Inc., registered in the U.S. and other countries. REPREVE is a registered trademark of Unifi, Inc. SiriusXM services require a subscription, sold separately by SiriusXM after trial period. Fees and taxes apply. All fees and programming subject to change. Sirius satellite service is available only to those in the 48 contiguous USA, D.C. and PR (with coverage limitations). Our Internet radio service is available throughout our satellite service area and in AK and HI. Some channels not available in all lineups. Sirius, XM and all related marks and logos are trademarks of Sirius XM Radio Inc. Sony is a registered trademark of the Sony Corporation. The Bluetooth word mark is a trademark of the Bluetooth SIG, Inc. THULE is a registered trademark of Thule Sweden AB.



[Click here to learn more about your Fusion](#)