

2011 Tribeca Accessories

■ Hood Protector

Matches the contours of the hood and helps protect it from stone chips and bugs.
E231SXA100



■ Front Bumper Underguard

Adds a rugged look while protecting the lower bumper area from brush and debris.
E551SXA000

■ Moonroof Air Deflector

Helps reduce wind noise and sun glare.
F541SXA000



■ Bumper Corner Moldings

Helps protect the corners of painted bumpers from scratches and dings. Kit includes four moldings.
E7710AS200



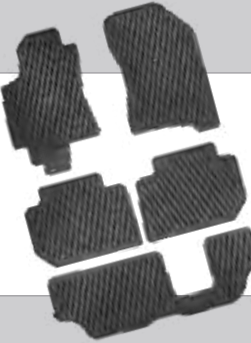
■ Rear Bumper Cover

Helps protect the upper surface of the painted bumper from scratches and dings.
E771SXA100



■ Anti-Slip Mat (not shown)

Provides a slip resistant covering for rear cargo area trays, bins and carpeted surfaces.
J5010LS040



■ All-Weather Floor Mats

Custom-fitted, heavy-gauge floor mats help protect vehicle carpet from sand, dirt and moisture.

J501SXA200 (Front & Second Rows)

J501SXA300 (Third Row)

Not intended for use over top of carpeted floor mats.



■ Remote Engine Starter

Allows vehicle to be started by pushing a button from the convenience of home or the office (up to 400 feet away depending on obstructions) so that the vehicle's interior temperature is more comfortable upon entry.
H001SXA100

■ SPT Oil Cap & Battery Hold Down

Replacement oil cap and battery hold down are manufactured from billet aluminum, anodized in Steel Gray or SPT Blue and laser etched with SPT logos.

SOA3881210 (Battery Hold Down-Blue)

SOA3881220 (Battery Hold Down-Gray)

SOA3881230 (Oil Cap-Blue)

SOA3881240 (Oil Cap-Gray)



■ Wheel Locks

Helps to deter theft of wheels and tires.

B321SFG000 (Alloy Wheels)

T3010YS000 (Touring Models & Chrome Wheels)



■ 18" Chrome Finished Alloy Wheel

Add a touch of flair to Tribeca with these chrome-finished alloy wheels. Order four of each part number.

B310SXA000 (Wheel)

B3110XA000 (Cap)

T971SXA100 (Lug Wrench)



■ Auto-Dimming Mirror with Compass

Mirror darkens when headlights are detected from behind the vehicle. Includes integrated electronic compass.
H501SXA100



■ Auto-Dimming Mirror with Compass and HomeLink®

Mirror darkens when headlights are detected from behind the vehicle. Includes electronic compass and three integrated HomeLink buttons which can be programmed to operate most garage door openers and other HomeLink compatible devices.

H501SXA201



■ Valve Stem Caps

Add a finishing touch to your Subaru. These caps feature "O" ring seals to help keep the valve orifices clean.

SOA342L109 (SPT)

SOA342L114 (STI)

SOA342L128 (Subaru Star Cluster)



■ Rear Dome/Reading Light

Independent on/off controls send a focused beam of light to left or right rear seat passenger. Available for vehicles equipped with moonroof. Excludes DVD equipped vehicles.

H461SXA000 (With Moonroof)



■ Carbon Fiber Key Fobs

New! Carbon fiber composite and stainless steel key fob with leather strap and universal split ring.

SOA342L138 (Subaru)

SOA342L139 (STI)

SOA342L140 (SPT)



■ Splash Guards

Helps protect vehicle paint finish from stones and road grime.

J101SXA001 (Front Set)

J101SXA200 (Rear Set)

57707XA270 (RR Bracket)

57707XA280 (LR Bracket)



■ Car Cover

Helps protect the exterior of your Tribeca. Made of lightweight breathable material.

M001SXA100

M0010AS020

(Car Cover Bag)



■ Engine Block Heater

Warms engine coolant to promote easier starting in extreme cold conditions. Plugs into a household electrical outlet.

A091SXA000



■ Battery Warmer

Warms vehicle's battery for easier starting in extremely cold weather. Plugs into a household electrical outlet.

J6010FS000



■ iPod® Interface

Allows extensive control of your iPod through the vehicle head unit and steering wheel controls (if equipped). Text displays playlist, artist, album, and song information. Supports Podcast and audiobook content.

H621SXA200

Not compatible with Satellite Radio. Details at subaru.com/ipod.



■ BlueConnect®

Bluetooth® wireless technology combined with advanced voice recognition software allow you to make and receive calls, store phone book information, and recognize up to seven different cell phone numbers. Voice recognition supports English, North American Spanish and Canadian French.

H001SXA500MV (Gray)

Excludes models equipped with Harman/Kardon® Audio.

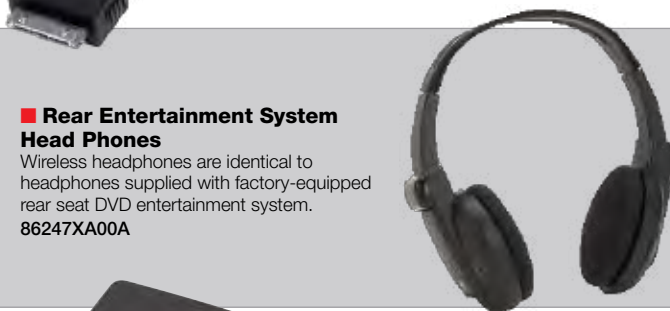
Some phones may not be compatible. Details at subaru.com/Bluetooth.



■ 5-Volt Conversion Cable

Allows newer iPods, including 4th generation iPod Nano and 2nd generation iPod Touch, to recharge while connected to the iPod Interface.

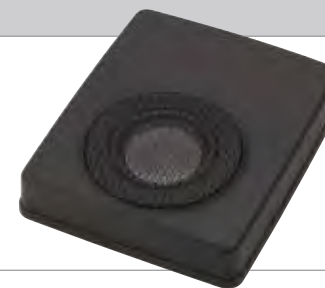
H621SXA300



■ Rear Entertainment System Head Phones

Wireless headphones are identical to headphones supplied with factory-equipped rear seat DVD entertainment system.

86247XA00A



■ Subwoofer

Big bass sound from a small package. Subwoofer is powered by an integrated amplifier and mounts under driver's seat. Fits 3.6R Premium.

H630SXA000

H630SXA100 (Installation Kit)



■ Satellite Radio

Satellite radio allows you to hear your favorite programming virtually anywhere in the continental US with up to 170 channels of digital quality music, sports, talk, and comedy. Your choice of XM® or SIRIUS®.

H621SXA000 (XM Satellite Radio Kit)

H621SXA100 (SIRIUS Satellite Radio Kit)

Excludes models equipped with Harman/Kardon® Audio.

Required monthly subscription sold separately after trial period ends. Additional fees, equipment, and taxes may apply. Not available in Hawaii and Alaska.

■ Puddle Lights

LED lights activate when vehicle doors are unlocked using the keyless entry. A soft glow illuminates the ground, aiding entry and exit of the vehicle.

H471SXA100



■ **Ash Tray**

Fits conveniently in the center console cup holder. Easily removed to empty contents.
92172AG040
F6010AG010 (Mounting Sleeve)



■ **Security System Upgrade – Shock Sensor**

Activates security system alarm when impact to the vehicle is detected.
H711SXA000



■ **Severe Weather Companion**

The severe weather kit contains just about everything needed to handle an unexpected weather emergency while traveling. Included are items which help provide the basic necessities such as warmth, light, water, first aid, and the ability to signal for help; all packaged in a handy padded canvas carrying case.
SOA868V9500

- | | |
|---------------|---------------|
| ■ Audio/Media | ■ Racking |
| ■ Exterior | ■ Performance |
| ■ Interior | |



Subaru of America reserves the right to change or withdraw accessories at any time without prior notice and without incurring the obligation to make changes to any accessories previously sold. All images are representative.



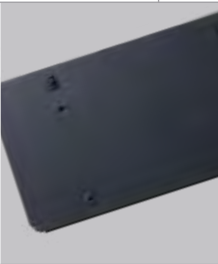
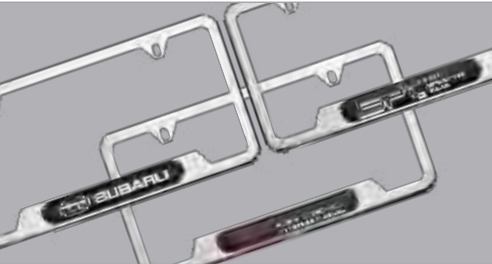
Subaru, Tribeca, STI and SPT are registered trademarks. Bluetooth is a trademark of Bluetooth SIG. BlueConnect and HomeLink are trademarks of Johnson Controls, Inc. iPod is a trademark of Apple, Inc. SIRIUS is a trademark of SIRIUS XM Radio Inc. XM is a trademark of XM Satellite Radio Inc



■ **Rear Cargo Tray**

Helps protect cargo area from dirt and spills. Can be easily removed and rinsed clean.
J501SXA000EU (Beige - Large*)
J501SXA000MW (Gray - Large*)
J501SXA100EU (Beige - Small)
J501SXA100MW (Gray - Small)

*Must be removed when third row seats are in use.



■ **License Plate Frames**

Frames are available with a variety of UV resistant polyurethane logos and come in either mirror polish or matte black.
Matte Black
SOA342L124 (SPT)
SOA342L126 (STI)
Polished Stainless Steel
SOA342L121 (SPT)
SOA342L123 (STI)
SOA342L127 (Subaru)

■ **Front License Plate Bracket**

Stainless steel with black powder coated finish. Includes mounting hardware.
SOA342L120

■ **Slim License Plate Frames**

Manufactured from heavy-gauge 304 stainless steel that will not rust or corrode. Kit includes hardware hider caps.
SOA342L104 (Polished Stainless Steel)
SOA342L105 (Matte Black)

■ **Cargo Organizer**

Conveniently transports your outdoor gear or up to four grocery bags. Quickly collapses for easy storage when not in use.
SOA567T100



■ **Cargo Net – Rear**

Neatly holds cargo and prevents it from sliding when the vehicle is in motion. Large Rear Cargo Tray (shown) must be removed when third row seats are in use.
F551SXA000



■ **Reverse Assist Sensors**

Helps provide added confidence when backing up or parallel parking. When reversing, audible warnings alert the driver as the vehicle approaches large objects in its path. The intermittent tone increases in frequency as the vehicle gets closer to the object.
H481SXA100
(Excludes models equipped with Harman/Kardon Audio)



■ **Cargo Net – Second Row Seat Back***

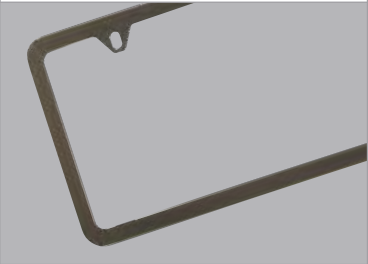
Additional cargo net storage to help keep the cargo area organized. Net and large Rear Cargo Tray (shown) must be removed when third row seats are in use.
F551SXA100



■ **Trailer Hitch**

Heavy-duty rated at 350 lbs. tongue weight, 2,000 lbs. towing capacity. Towing capacity may be increased to 3,500 lbs. with the addition of the accessory Transmission Oil Cooler.
L101SXA100 (Trailer Hitch)
D551SXA000 (Transmission Oil Cooler)

Hitch ball not included. Trailer brakes may be needed.



■ **Carbon Fiber License Plate Frame**

New! Carbon fiber composite license plate frame is hand made with thick resin-impregnated carbon fiber cloth, and is finished in a UV resistant clear coat. Kit includes hardware hider caps.
SOA342L143 (SPT)

■ **Slim Carbon Fiber License Plate Frame**

New! Carbon fiber composite license plate frame is hand made with thick resin-impregnated carbon fiber cloth, and is finished in a UV resistant clear coat. Kit includes hardware hider caps.
SOA342L142

■ Retractable Luggage Compartment Cover*

Helps to protect the contents of the cargo area from prying eyes. Cover retracts with a spring loaded mechanism for ease of use, and is easily installed and removed.

F5510XA000ML (Black)

■ Luggage Compartment Cover*

Heavy-duty vinyl construction helps conceal items in the rear cargo area with the third row seat folded down.

F551SXA300ER (Beige)

F551SXA300MR (Gray)

■ Dog Guard/Compartment Separator*

Separates pets and cargo from passenger area. Large Rear Cargo Tray (shown) must be removed when third row seats are in use.

F551SXA200

Not for use with child seats requiring tether straps.

■ Ski and Snowboard Carrier

New design holds up to six pairs of skis or four snowboards. May also be used to carry fishing rods.†††

E361SAG500 (Ski Carrier)

E3610AS820 (Aero Clamps)



■ Roof Cargo Carrier

Provides 13 cubic feet of lockable storage capacity. Opens from rear to accommodate loading from three sides. Measures 56" L x 36" W x 18" H.†††

E361SAG200

■ Roof Cargo Carrier - Extended

Provides 16 cubic feet of lockable storage capacity. Convenient dual-side opening allows for loading from either side of the vehicle. Measures 76" L x 36" W x 16" H.†††

E361SAJ200

■ Heavy-Duty Roof Cargo Basket

Constructed of powder-coated steel. Includes mounting hardware, black stretch net with hooks and a custom fairing to help deflect wind and reduce noise.

Measures 44" L x 39" W x 6.5" H.†††

E361SSA200

■ Bike Carrier - Roof Mounted

Lockable padded jaws clamp onto a bike with a 1"-3" downtube and holds it securely on the roof of the vehicle.†††

E361SXA300 (Bike Carrier)

E361SXA100 (Aero Clamps)



■ Bike Carrier - Universal Fork Mount

A fork-mount bike carrier that fits aero, round and square cross bar shapes without special clamps. It features quick and easy installation, and an easy-to-adjust sliding wheel tray that makes positioning the rear wheel a snap.†††

E361SAJ300

E3610LS430 (Bike Wheel Holder)

E361SXA100 (Aero Clamps)



Shown with Bike Wheel Holder (sold separately).

■ Kayak Carrier

Cradles and securely transports most kayak hull shapes. Includes straps with padded buckles.†††

E361SXA200 (Kayak Carrier)

E361SXA100 (Aero Clamps)



■ Bike Carrier - Hitch Mounted

Slides into trailer hitch receiver. Carries one or two bicycles.

E3610AS940

To avoid blocking taillights, use roof mounted bike carriers to transport bikes with solid disc wheels.



■ Cross Bar Set - Round

Wider and more rigid bars have a universal round profile that allows the use of numerous attachments. Also compatible with most Genuine Subaru roof attachments and carriers.†††

E361SXA500 (With Moonroof)

■ Cross Bar Set - Aero Fixed Position

May be used in conjunction with Genuine Subaru roof attachments and carriers.†††

E361SXA000 (Without Moonroof)

■ Cross Bar Set - Aero

May be used in conjunction with Genuine Subaru roof attachments and carriers.†††

E361SXA400 (With Moonroof)

††† Consult vehicle owner's manual for total roof load limit.