

 **HYUNDAI** | NEW THINKING.  
NEW POSSIBILITIES.™

2015  
*SONATA* **hybrid**



## THE DRIVE TO DO BETTER

*That is what inspired us to create the Sonata Hybrid. We started with a lithium-ion polymer battery – one of the smallest, lightest and most advanced hybrid batteries in the world. Then we added a full parallel hybrid drive system, advanced safety features and a sleek, aerodynamic design, creating the perfect blend of style, luxury and fuel-efficiency.*



### EXTERIOR

## BRILLIANT DESIGN

*The modern, wind-cheating design of the Sonata Hybrid allows air to flow around the body with less resistance, resulting in a 0.25 coefficient of drag that bests many sports cars. The large central air intake delivers the perfect marriage of form and function, while LED front position lights and taillights provide a durable and energy-efficient lighting system. The signature chrome accent on the side enhances fluidity, delivering the overall impression of a sophisticated sedan that blends aerodynamic design with elegance.*

HEADLIGHTS WITH STANDARD LED ACCENT



SIX STANDARD AIRBAGS\*



AVAILABLE PANORAMIC SUNROOF

May not be exactly as shown.

STANDARD REARVIEW CAMERA AND AVAILABLE 7" LCD TOUCH-SCREEN NAVIGATION SYSTEM<sup>9</sup>

7" touch-screen shown. May not be exactly as shown.

STANDARD FRONT HEATED SEATS AND AVAILABLE REAR HEATED SEATS

May not be exactly as shown.



May not be exactly as shown.

## INTERIOR

### THE ART OF COMFORT

Standard features like proximity keyless entry with push button ignition, dual-zone automatic temperature controls, a Bluetooth® hands-free phone system, and a 4.3" LCD touch-screen with rearview camera are evidence that we engineered the Sonata Hybrid not only for exceptional efficiency, but also to deliver the utmost in comfort and convenience. Inside the spacious interior everything works harmoniously to delight your senses, like the available 8-way power driver's seat, and to put you in control, like the electroluminescent gauge cluster with hybrid technology display. Make yourself comfortable today in the 2015 Sonata Hybrid.

## PERFORMANCE

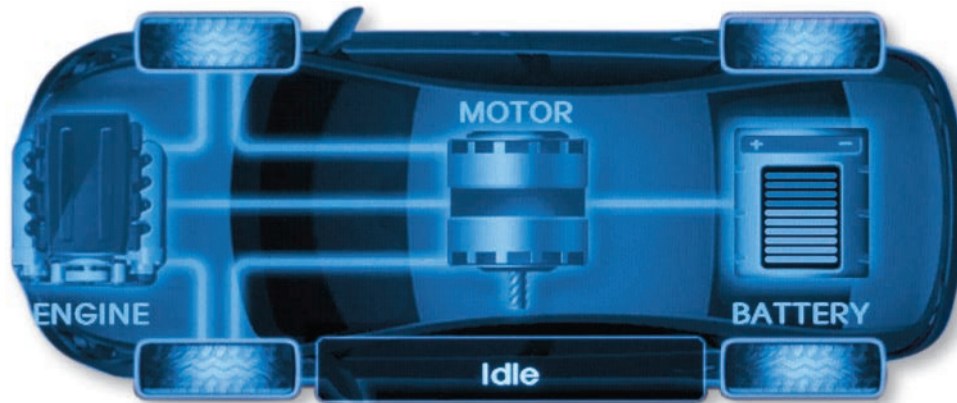
### EFFICIENTLY POWERFUL

Whether you're going across town or across the country, the Sonata Hybrid offers exceptional performance and efficiency all the way. With 5.9L/100km highway fuel economy<sup>8</sup>, it provides a significant benefit to hybrid owners on highway commutes, while also offering outstanding 6.6L/100km city fuel economy<sup>8</sup>. This is a direct result of the parallel hybrid system configuration that allows the car to run on a gasoline internal combustion engine, an electric motor, or both, creating the perfect blend of power and efficiency. No matter where you're going, you'll get there with elegance and efficiency in the Sonata Hybrid.

FUEL ECONOMY (L/100KM)<sup>8</sup>  
2015 Sonata Hybrid

(City/HWY)

6.6 / 5.9



HYBRID ENERGY FLOW DISPLAY

## 2015 SONATA HYBRID TECHNOLOGY

### *An Efficiently Powerful Hybrid*

*The 2.4L Atkinson-cycle engine is surprisingly powerful, yet highly efficient. Coupled with an interior permanent-magnet synchronous electric motor and lithium-ion polymer battery technology, the Sonata Hybrid delivers 199 combined horsepower with impressive fuel economy – letting you drive more than 1,100km\* on a single tank of gas.*

### *Lithium-ion Polymer is Better*

*The Sonata Hybrid's lithium-ion polymer battery is a marvel of technology. It has numerous advantages over nickel-metal hydride batteries found in other hybrid models, including greater power density and lower weight. Compared to these batteries, lithium-ion polymer technology is a lighter, smaller and stronger power source.*



# SONATA HYBRID COLOURS

## EXTERIOR



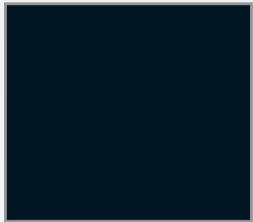
**PLATINUM SILVER METALLIC**



**POLISHED METAL METALLIC**



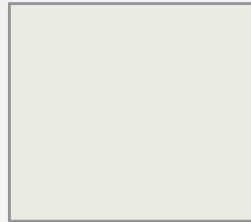
**BLUE SKY METALLIC**



**PHANTOM BLACK PEARL**

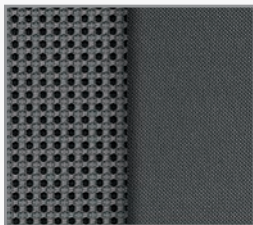


**VENETIAN RED PEARL**



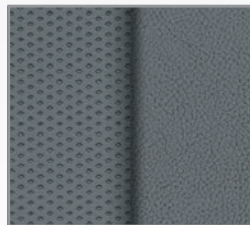
**ICE WHITE METALLIC**

## INTERIOR



**GREY CLOTH\***

*(Standard on Sonata Hybrid and Sonata Hybrid Limited)*



**GREY LEATHER\***

*(Standard on Sonata Hybrid Limited with Technology Package)*

Choice of interior colour depends upon model selection. Due to print production process, the colours shown throughout this product card may vary slightly from the actual hue. See your dealer for model applications. \*May not be exactly as shown.

*THERE'S NO  
SUBSTITUTE  
FOR PEACE  
OF MIND.*

*The quality of our vehicles is equally matched by the quality of our warranty. Rest assured, we stand proudly and confidently behind our vehicles to give you the ultimate peace of mind with a 5 year/100,000km comprehensive limited warranty, one of the best backed warranties in Canada. We also provide a 5 year/Unlimited km Roadside Assistance Program<sup>††</sup> featuring flat tire changing, lockout service and more. Just one toll-free call away, 24 hours a day. You're covered with Hyundai.*

**5 YEAR  
WARRANTY**

**100,000 KM**  
COMPREHENSIVE LIMITED WARRANTY

**5-YEAR/100,000 KM**  
Comprehensive Limited Warranty<sup>†</sup>

**5-YEAR/100,000 KM**  
Powertrain Warranty

**5-YEAR/100,000 KM**  
Emission Warranty

**5-YEAR/UNLIMITED KM**  
Roadside Assistance Program<sup>††</sup>

**8-YEAR/160,000 KM**  
Hybrid System<sup>†††</sup>



**HYUNDAI**

NEW THINKING.  
NEW POSSIBILITIES.™

015SA-L400H



## SPECIFICATIONS

### Standard Equipment Includes:

6-speed Automatic Transmission with SHIFTRONIC® manual mode ▪ 16" Hybrid-design aluminum alloy wheels ▪ 2.4L DOHC Atkinson-cycle 4-cylinder engine ▪ Interior permanent-magnet synchronous electric motor ▪ 270V Lithium-ion Polymer Battery ▪ Anti-lock Braking System (ABS) with Electronic Brake-force Distribution (EBD) and Brake Assist (BA) ▪ 6-speaker AM/FM/SiriusXM™/CD/MP3 audio system with 4.3" LCD touch-screen ▪ Automatic headlights ▪ Bluetooth® hands-free phone system<sup>o</sup> ▪ Chrome body-side inserts ▪ Chrome exterior door handles ▪ Dual-zone automatic climate control ▪ Airbags(6)<sup>1</sup>: front impact (2), front seat-mounted side-impact (2), and roof-mounted side curtain (2)

- Electroluminescent instrument cluster (Supervision) ▪ Electronic Stability Control with Traction Control System<sup>2</sup> ▪ Floor console-mounted rear air vents ▪ Front active head restraints ▪ Fog lamps ▪ LED front positioning lamps ▪ Heated front seats ▪ iPod®/USB/auxiliary connectivity ▪ Leather-wrapped steering wheel and gear shift knob ▪ LED interior lights ▪ LED tail-lights ▪ Multi-function LCD trip computer with Hybrid Technology Display ▪ Proximity keyless entry with push-button ignition ▪ Side mirror turn signal indicators ▪ Rearview camera

### LIMITED

#### Includes Standard Equipment Plus:

- 17" Hybrid-design aluminum alloy wheels ▪ Panoramic sunroof ▪ Power-adjustable driver's seat with adjustable lumbar support ▪ Electrochromic auto-dimming rearview mirror with integrated HomeLink® transceiver and compass

#### LIMITED with Technology Package Includes Limited Standard Equipment Plus:

- Navigation system<sup>o</sup> with 7" high-resolution touch-screen display ▪ Heated rear seats ▪ 9-speaker Infinity® audio system with external amplifier ▪ Premium door sill plates ▪ Leather seating surfaces

[hyundaicanada.com/Sonata-Hybrid](http://hyundaicanada.com/Sonata-Hybrid)

™/®The Hyundai names, logos, product names, feature names, images and slogans are trademarks owned by Hyundai Auto Canada Corp. Specifications, features, illustrations, accessories, materials and equipment and all other information shown in this product card are based on the latest information available at the time of publication. Although descriptions are believed to be correct, accuracy cannot be guaranteed. Hyundai Auto Canada Corp. reserves the right to make any changes or modifications at any time, without notice or obligation, including, without limitation, in colour, specifications, features, accessories, materials, equipment and models. Some vehicles are shown with optional equipment. All Hyundai warranties have no deductible. <sup>1</sup>Fuel economy figures are based on manufacturer's testing and are used for comparison purposes only. Actual fuel efficiency may vary based on driving conditions and the addition of certain vehicle accessories. <sup>2</sup>Hyundai's Comprehensive Limited Warranty coverage covers most vehicle components against defects in workmanship under normal use and maintenance conditions. <sup>3</sup>Hyundai's 24-Hour Roadside Assistance Program is a limited service and does not cover certain costs or expenses. Roadside Assistance is not a warranty. <sup>4</sup>Hybrid System includes Hybrid Battery Pack Assembly, Hybrid Starter and Generator, Hybrid Power Control Unit, Auto Transmission including Traction Motor. <sup>5</sup>The Supplemental Restraint (Airbag) System (SRS) is designed to work with the 3-point seatbelt system. The SRS deploys in certain frontal and/or side-impact conditions where significant injury is likely. The SRS is not a substitute for seatbelts, which must still be worn at all times. Children under the age of 13 should be securely restrained in the rear seat. NEVER place a child-seat in the front seat of a Hyundai vehicle. <sup>6</sup>Electronic Stability Control (ESC) and Traction Control System (TCS) are meant to enhance conscientious driving habits and are not a substitute for safe driving practices. ESC cannot control your vehicle's stability under all driving situations. No system, no matter how advanced, can overcome physics or correct poor driving. Speed, road conditions and driver steering input will affect whether ESC can help prevent loss of control. See Owner's Manual for details and limitations. <sup>7</sup>1,100km is calculated using the Sonata Hybrid highway fuel economy value and the size of the Sonata Hybrid's tank (65L). <sup>8</sup>When equipped with optional navigation package, Bluetooth® Hands Free and the navigation system only recognize English voice commands. Bluetooth® word mark and logos are registered trademarks owned by Bluetooth SIG, Inc., HomeLink® is a registered trademark of Johnson Controls, Inc., iPod® is a registered trademark of Apple, Inc. The SiriusXM™ name is a registered trademark of SiriusXM Satellite Radio Inc. All other trademarks and trade names are those of their respective owners.



[facebook.com/hyundaicanada](https://facebook.com/hyundaicanada)  
[youtube.com/hyundaicanada](https://youtube.com/hyundaicanada)  
[instagram.com/hyundaicanada](https://instagram.com/hyundaicanada)  
[twitter.com/hyundaicanada](https://twitter.com/hyundaicanada)