

Avalon

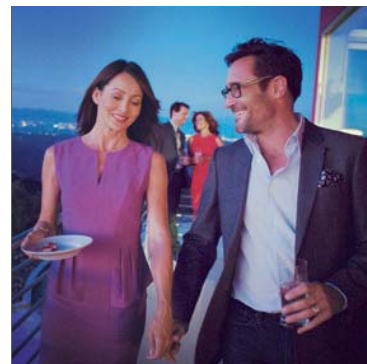
2014



An uncompromised drive

Every angle of Avalon evokes elegance

The 2014 Toyota Avalon stands out no matter where you go. Its sculpted lines and curves create a distinguished profile, while a lightweight body and athletic stance give it a performance edge. Avalon was developed by a U.S. led design and engineering team, and is assembled in Kentucky as the purest expression of everything we love about driving. It all results in one thing: a feeling of excitement with every drive. Let's go places.





Limited shown in Magnetic Gray Metallic.



Limited shown in Classic Silver Metallic with Technology Package.

The science of luxury

A place where art and technology converge



XLE Touring interior shown in Almond.

Joy. Excitement. Desire. One touch can communicate so many things. This was the idea behind the technology that surrounds you in the 2014 Avalon. We created sleek Intelligent Touch controls that are simple to adjust, an available Entune® App Suite¹ that gives you access to more information than ever before, and a standard backup camera² that helps guide you into, or out of, the tight spots. Avalon has the technology and luxury to assure you get the most out of every drive.

entune®
App Suite

Technology that connects. With a compatible smartphone, Avalon's available Entune® App Suite and multimedia system help keep you entertained and give you easy access to your information so you can better focus on driving. Stream music with Pandora®, locate restaurants with Bing™ and get movie tickets with MovieTickets.com. So much went into this car so you can get even more out of it.

1. See footnote 7 in Disclosures section. 2. See footnote 11 in Disclosures section.

A high-angle, black and white photograph of a car's interior, showing the front seats, dashboard, and steering wheel. The seats are upholstered in dark leather with visible stitching. The dashboard features a central infotainment screen displaying a navigation map. The steering wheel has the Toyota logo in the center. The overall aesthetic is clean and modern.

A tailored environment

Beauty is in the details

Imagine an environment that feels as if it were created just for you. A space with controls that invite interaction, seats that cradle and lights that welcome. Technology would simplify, not complicate, and also adapt to your needs. You would be surrounded by beautifully stitched leather that feels handcrafted and luxurious to the touch. We put all of this in the Avalon's spacious interior and designed it to fit together seamlessly.

Limited interior shown in Black. 2013 model shown.



Limited interior shown in Black.

Second row Luxury should not be for the driver only. Avalon's spacious rear seats allow passengers in the second row to feel like they're in first class. With standard three-zone climate control and heated rear seats on Avalon Limited, riding in an Avalon is just as rewarding as driving one.

Premium leather Avalon Limited continues a heritage of ergonomic excellence with standard power-adjustable, premium perforated leather-trimmed heated and ventilated front seats, and leather-trimmed steering wheel and shift lever — like they're tailored to the driver.

eBin™ Technology simplified. Avalon Limited and Hybrid Limited offer the world's first in-console wireless charging;¹ surface integrated into the eBin™. Just place your Qi compatible device on the nonslip surface and it charges.

*Available with Technology Package option.

1. See footnote 19 in Disclosures section.



Limited shown in Attitude Black Metallic.

Passion that performs

A bold way of looking at performance

The Avalon redefines the driving experience – no detail was overlooked. Every panel was sculpted for the open road. A drag coefficient of just .28 helps to improve efficiency and performance while a rigid chassis aids in better handling and a crisper response. Avalon has combined art and engineering to make sure your every moment behind the wheel is better than the last. This is a commitment to performance, and we broke every rule to bring you the purest expression of driving.



Independent suspension with Sport Mode Avalon has fully independent suspension that adapts to the road to help give you more control. An available Sport Mode increases throttle response and quickens the electric power steering for livelier handling when desired.

Aerodynamic efficiency Racing technology. Underneath the chassis, specially shaped diffuser panels reduce turbulence, resulting in enhanced control and reduced wind noise.

XLE Premium shown in Blizzard Pearl.

Performance that inspires

The art of driving has returned

It all started with a desire for a more connected driving experience. We designed available paddle shifters that allow a driver to change gears with the touch of a finger. We built an engine as powerful as it is efficient, with a 3.5-liter V6 that produces 268 horsepower and offers an EPA-estimated 31 mpg highway.¹ Avalon is an absolute breakthrough in high-end driving and a bold direction for the road ahead.



A true driver's car Inspired by racing, available steering wheel-mounted paddle shifters provide for a more hands-on driving experience by letting you control when you shift and matching each rev for seamless downshifts. Combined with a 6-speed Electronically Controlled automatic Transmission with intelligence (ECT-i) that learns your driving style, Avalon makes sure that driving a Toyota will never be the same again.

1. See footnote 29 in Disclosures section.

XLE Touring shown in Moulin Rouge Mica.

A radical drive

Avalon Hybrid

Avalon Hybrid was designed to offer an uncompromising level of performance. A driving experience that was more than refined — it was revolutionary. We used our proven Hybrid Synergy Drive® system that delivers a spirited ride while at the same time offering up to an EPA-estimated 40 combined mpg¹ and a Super Ultra Low Emission Vehicle (SULEV)² emission rating. The world is accelerating, and we're leading the charge.



Multi-Information Display (MID) Avalon's MID shows you everything you need to know. See how much fuel you have left, check your current mpg and, on Avalon Limited, get turn-by-turn directions³ to your favorite spot — all on one display, to help you keep your eyes on the road.

40/39
est. city est. hwy

Class-leading fuel economy⁴ Our Hybrid Synergy Drive® system and Electronically controlled Continuously Variable Transmission (ECVT) combine for fuel economy estimates that surpass those of many compact cars.⁵

Hybrid Limited shown in Parisian Night Pearl.

1. See footnote 29 in Disclosures section. 2. See footnote 28 in Disclosures section. 3. See footnote 6 in Disclosures section. 4. Based on manufacturers' data for premium midsize segment. 5. Based on compact car, manufacturer's segmentation. 2014 EPA-estimated 40 city/39 highway/40 combined mileage for Avalon Hybrid. Actual mileage will vary.

Safety

Inspired by the unexpected

It would be great to drive in a world with no surprises, a world where everyone paid attention while they were driving. That world does not exist. The moments when things don't go as planned inspired the six advanced features in the Star Safety System.™ **STAR** SAFETY SYSTEM An available Blind Spot Monitor (BSM)¹ can signal the unseen, and a backup camera² helps you with the unknown. Add a class-leading ten standard airbags^{3,4} and you have a system working together with one purpose in mind: a more confident drive.

Ten airbags

Avalon comes standard with ten airbags, including driver and front passenger Advanced Airbag System (A, B), driver and front passenger seat-mounted side airbags (C, D), driver and front passenger knee airbags (E, F), rear seat-mounted side airbags (G, H) and front and rear side curtain airbags (I, J).



Blind Spot Monitor (BSM) with Rear Cross-Traffic Alert (RCTA)⁵

The available Blind Spot Monitor (BSM) with Rear Cross-Traffic Alert (RCTA) uses radar technology to help you identify vehicles that may not be visible when changing lanes or when backing out of the driveway. When a vehicle is detected, the system illuminates a warning indicator on the appropriate sideview mirror, and RCTA also makes an audible warning so you know to proceed with care.

Photo not intended to replicate actual inflated airbags.

1. See footnote 16 in Disclosures section. 2. See footnote 11 in Disclosures section. 3. See footnote 23 in Disclosures section. 4. Airbag quantities based on Toyota industry analysis. Class based on Polk Full-Size non-luxury segment. 5. See footnote 17 in Disclosures section.

| Colors



Attitude Black Metallic



Parisian Night Pearl



Cypress Pearl



Sizzling Crimson Mica



Moulin Rouge Mica



Crème Brulee Mica



Magnetic Gray Metallic

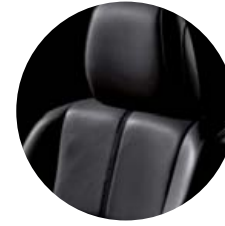


Classic Silver Metallic



Blizzard Pearl
Extra-cost color

| Trim



Black leather trim



Almond leather trim



Gray leather trim

| Wheels



Hybrid alloy wheel



XLE and XLE
Premium alloy wheel



XLE Touring alloy wheel



Limited alloy wheel

Plush leather options shown — Avalon offers several choices including Limited and Hybrid Limited with premium perforated leather trim.

| Accessories

Add a personal touch to your Avalon with Genuine Toyota Accessories. Some accessories may not be available in all regions of the country. See your Toyota dealer for details.



Mudguards



Rear bumper appliqué



Paint protection film – hood and fenders and front bumper¹



Carpet trunk mat²



Carpet floor mats³



Cargo tray²



All-weather floor mats³



Illuminated doorsills

Alloy wheel locks
All-weather floor mats³
Ashtray cup
Cargo net – envelope²
Cargo tote²

Cargo tray²
Carpet floor mats³
Carpet trunk mat²
Door edge guards
Emergency assistance kit

First aid kit
Glass Breakage Sensor (GBS)
Illuminated doorsills
Mudguards

Paint protection film – hood and fenders and front bumper¹
Rear bumper appliqué
Remote Engine Starter

1. See footnote 30 in Disclosures section. 2. See footnote 31 in Disclosures section. 3. See footnote 32 in Disclosures section.

Features¹

EXTERIOR	XLE	XLE PREMIUM	XLE TOURING	LIMITED	HYBRID XLE PREMIUM	HYBRID XLE TOURING	HYBRID LIMITED
Quadbeam halogen headlights with auto on/off feature and Daytime Running Lights (DRL)	S	S	S	-	S	S	-
High Intensity Discharge (HID) Quadbeam headlights with auto on/off feature and LED Daytime Running Lights (DRL)	-	-	-	S	-	-	S
Automatic High Beam ²	-	-	-	P	-	-	P
Wide-angle fog lights	-	-	S	S	-	S	S
LED taillights	S	S	S	S	S	S	S
Color-keyed heated power outside mirrors with turn signal indicators and manual folding feature	S	S	S	-	S	S	-
Color-keyed heated, auto-dimming power outside mirrors with turn signal indicators, puddle lights and manual folding feature	-	-	-	S	-	-	S
Power tilt/slide moonroof with sliding sunshade	-	S	S	S	S	S	S
17-in. silver-painted alloy wheels with P215/55R17 tires	S	S	-	-	S	S	S
18-in. silver-painted alloy wheels with P225/45R18 tires	-	-	-	S	-	-	-
18-in. anthracite-painted alloy wheels with P225/45P18 tires	-	-	S	-	-	-	-
Washer-linked variable intermittent windshield wipers	S	S	S	-	S	S	-
Rain-sensing washer-linked variable intermittent windshield wipers	-	-	-	S	-	-	S
Acoustic noise-reducing windshield and driver and front passenger side windows	S	S	S	S	S	S	S
Dual chrome-tipped integrated exhaust	S	S	S	S	-	-	-
Hidden exhaust with chrome-accented cover	-	-	-	-	S	S	S
Resin scuff plate doorsills	S	S	S	-	S	S	-
Aluminum scuff plate doorsills	-	-	-	S	-	-	S
INTERIOR							
Dual zone automatic climate control with air filter and rear-seat vents	S	S	S	-	S	S	-
Three-zone climate control with air filter and rear-seat vents	-	-	-	S	-	-	S
Intelligent Touch controls for climate control and audio system	S	S	S	S	S	S	S
Display Audio — includes 6.1-in. touch-screen, AM/FM CD player with MP3/WMA playback capability, eight speakers, auxiliary audio jack, USB port ³ with iPod ^{®4} connectivity and control, vehicle information with customizable settings, and hands-free phone capability, phone book access and music streaming via <i>Bluetooth</i> ^{®5} wireless technology	S	S	-	-	S	-	-
Display Audio with Navigation ⁶ and Entune [®] App Suite ⁷ — includes 6.1-in. touch-screen, AM/FM CD player with MP3/WMA playback capability, nine speakers including amplifier, SiriusXM Radio ⁸ with 90-day All Access trial, HD Radio ^{™6} with iTunes [®] Tagging ⁹ , auxiliary audio jack, USB port ³ with iPod ^{®4} connectivity and control, vehicle information with customizable settings, and hands-free phone capability, phone book access, advanced voice recognition, ¹⁰ and music streaming via <i>Bluetooth</i> ^{®5} wireless technology	-	O	S	-	O	S	-
Premium HDD Navigation ⁶ with Entune [®] App Suite ⁷ and JBL [®] — includes 7-in. high-resolution touch-screen with split-screen capability, AM/FM CD player with MP3/WMA playback capability, 11 JBL [®] GreenEdge [™] speakers in nine locations including subwoofer and amplifier, SiriusXM Radio ⁸ with NavTraffic ^{™8} , NavWeather [™] , Fuel and Sports and Stocks 90-day All Access trial, HD Radio ^{™6} with iTunes [®] Tagging ⁹ , auxiliary audio jack, USB port ³ with iPod ^{®4} connectivity and control, vehicle information with customizable settings, and hands-free phone capability, phone book access, advanced voice recognition, ¹⁰ and music streaming via <i>Bluetooth</i> ^{®5} wireless technology	-	-	-	S	-	-	S
Entune [®] App Suite ⁷ — includes Bing [™] , iHeartRadio, MovieTickets.com, OpenTable [®] and Pandora [®] ; real-time info including traffic, weather, fuel prices, sports and stocks. Access to Entune [®] services is subscription-free. See toyota.com/entune for details.	-	O	S	-	O	S	-
Entune [®] App Suite ⁷ — includes Bing [™] , iHeartRadio, MovieTickets.com, OpenTable [®] and Pandora [®] ; SXM Data Services ⁹ including NavTraffic ^{™8} , NavWeather [™] , and Sports & Stocks. Access to SXM data services (Stocks/Sports/Fuel Prices/Weather/Traffic) is complimentary for three years. Access to all other Entune [®] App Suite ⁷ services is subscription-free. See toyota.com/entune for details.	-	-	-	S	-	-	S
Backup camera ¹¹	S	S	S	S	S	S	S
Cruise control	S	S	S	S	S	S	S
Dynamic Radar Cruise Control (DRCC) ¹²	-	-	-	P	-	-	P
Leather-trimmed tilt/telescopic steering wheel with audio, Multi-Information Display, and <i>Bluetooth</i> ^{®5} hands-free phone controls	S	S	-	-	S	-	-
Premium leather-trimmed tilt/telescopic steering wheel with audio, Multi-Information Display, <i>Bluetooth</i> ^{®5} hands-free phone and voice command controls	-	-	-	-	-	S	S
Premium leather-trimmed tilt/telescopic steering wheel with paddle shifters and audio, Multi-Information Display, <i>Bluetooth</i> ^{®5} hands-free phone and voice command controls	-	-	S	S	-	-	-
Optitron instrumentation with speedometer, tachometer, coolant temperature, fuel gauges; TFT Multi-Information Display with customizable settings, odometer, tripmeter, current/average fuel economy, distance to empty, speed, shift-position indicator, navigation ⁶ with turn-by-turn directions (Limited only), ECO and Sport Mode indicator, ECO Drive Level Indicator and warning messages	S	S	S	S	-	-	-
Optitron instrumentation with speedometer, hybrid system power meter, coolant temperature, fuel gauges; TFT Multi-Information Display with customizable settings, odometer, tripmeter, tachometer, current/average fuel economy, distance to empty, speed, shift-position indicator, navigation ⁶ with turn-by-turn directions (Limited only), EV, ¹³ ECO and Sport Mode indicators, energy monitor and warning messages	-	-	-	-	S	S	S
Leather-trimmed multi-stage heated front seats; 8-way power-adjustable driver's seat with power lumbar support; 4-way power-adjustable front passenger seat	S	S	S	-	S	S	-

S = Standard O = Optional - = Not Available P = Feature is available as part of an option package.

See numbered footnotes in Disclosures section.

I Features¹ (continued)

INTERIOR (continued)

	XLE	XLE PREMIUM	XLE TOURING	LIMITED	HYBRID XLE PREMIUM	HYBRID XLE TOURING	HYBRID LIMITED
Premium perforated leather-trimmed multi-stage heated and ventilated front seats; 10-way power-adjustable driver's seat with power lumbar support and power cushion extension; 8-way power-adjustable front passenger seat	-	-	-	S	-	-	S
Heated rear seats	-	-	-	S	-	-	S
Driver's seat and outside mirrors memory systems	-	-	S	S	-	S	S
Rear seat with center armrest cup holders and trunk pass-through	S	S	S	S	S	S	S
Wood-grain-style interior trim with smoked chrome interior accents and door handles	S	S	S	S	S	S	S
White ice interior ambient lighting	-	-	-	S	-	-	S
Smart Key System ¹⁴ on front doors with Push Button Start and remote illuminated entry	S	-	-	-	-	-	-
Smart Key System ¹⁴ on front doors and trunk with Push Button Start and remote illuminated entry	-	S	S	S	S	S	S
Power door locks with shift-linked automatic lock/unlock feature and anti-lockout feature	S	S	S	S	S	S	S
Power windows with auto up/down and jam protection in all positions and retained-power features	S	S	S	S	S	S	S
Rear window defogger with timer	S	S	S	S	S	S	S
Power rear window sunshade	-	-	-	S	-	-	S
Day/night rearview mirror and maplights	S	-	-	-	-	-	-
Auto-dimming rearview mirror with compass, maplights and HomeLink ^{®15} universal transceiver	-	S	S	S	S	S	S
Covered center console with sliding cover and armrest, storage compartment and two front cup holders	S	S	S	S	S	S	S
Illuminated glove compartment	S	S	S	S	S	S	S
eBin [™] sliding electronic device holder with wire management feature and illuminated interior storage with two 12V auxiliary power outlets, auxiliary audio jack and USB port ³	S	S	S	S	S	S	S
Three 12V auxiliary power outlets (two in eBin [™] and one in center-console storage compartment)	S	S	S	S	S	S	S
OPTIONS AND PACKAGE							
Blind Spot Monitor (BSM)¹⁶ with Rear Cross-Traffic Alert (RCTA)¹⁷	-	-	O	S	-	O	S
Display Audio with Navigation⁶ and Entune[®] App Suite⁷ — includes 6.1-in. touch-screen, AM/FM CD player with MP3/WMA playback capability, nine speakers including amplifier, SiriusXM Radio ⁸ with 90-day All Access trial, HD Radio ^{™6} with iTunes [®] Tagging ⁹ ; auxiliary audio jack, USB port ³ with iPod ^{®24} connectivity and control, vehicle information with customizable settings, and hands-free phone capability, phone book access, advanced voice recognition ¹⁰ and music streaming via <i>Bluetooth</i> ^{®5} wireless technology	-	O	S	-	O	S	-
Technology Package — Dynamic Radar Cruise Control (DRCC) ¹² Automatic High Beam ² and Pre-Collision System (PCS) ¹⁸ and Qi wireless charging ¹⁹ for eBin [™] storage tray	-	-	-	P	-	-	P
SAFETY AND CONVENIENCE							
STAR SAFETY SYSTEM[™] Star Safety System [™] — includes Vehicle Stability Control (VSC) ²⁰ Traction Control (TRAC), Anti-lock Brake System (ABS), Electronic Brake-force Distribution (EBD), Brake Assist (BA) ²¹ and Smart Stop Technology [®] (SST) ²²	S	S	S	S	S	S	S
Ten airbags ²³ — includes driver and front passenger Advanced Airbag System, driver and front passenger seat-mounted side airbags, driver and front passenger knee airbags, rear seat-mounted side airbags, and front and rear side curtain airbags	S	S	S	S	S	S	S
Driver and front passenger Whiplash-Injury-Lessening (WIL) ²⁴ seats	S	S	S	S	S	S	S
3-point seatbelts for all seating positions, driver-side Emergency Locking Retractor (ELR) and Automatic/Emergency Locking Retractor (ALR/ELR) on all passenger belts	S	S	S	S	S	S	S
LATCH (Lower Anchors and Tethers for CHildren) includes lower anchors on outboard rear seats and tether anchors on rear seats	S	S	S	S	S	S	S
Child-protector rear door locks	S	S	S	S	S	S	S
Energy-absorbing collapsible steering column	S	S	S	S	S	S	S
Front and rear energy-absorbing crumple zones with side-impact door beams	S	S	S	S	S	S	S
Side-impact door beams	S	S	S	S	S	S	S
Tire Pressure Monitor System (TPMS) ²⁵	S	S	S	S	S	S	S
Collision sensors: deactivate high-voltage battery	-	-	-	-	S	S	S
Daytime Running Lights (DRL) with on/off feature	S	S	S	-	S	S	-
LED Daytime Running Lights (DRL) with on/off feature	-	-	-	S	-	-	S
Safety Connect ^{®26} — includes Emergency Assistance, Stolen Vehicle Locator, Roadside Assistance and Automatic Collision Notification. Available by subscription. Complimentary one-year trial subscription.	-	-	-	S	-	-	S
Pre-Collision System (PCS) ¹⁸	-	-	-	P	-	-	P
Blind Spot Monitor (BSM) ¹⁶ with Rear Cross-Traffic Alert (RCTA) ¹⁷	-	-	O	S	-	O	S
Anti-theft system with engine immobilizer ²⁷	S	S	S	S	S	S	S

S = Standard O = Optional - = Not Available P = Feature is available as part of an option package.

See numbered footnotes in Disclosures section.

I Specifications

MECHANICAL	XLE	XLE PREMIUM	XLE TOURING	LIMITED	HYBRID XLE PREMIUM	HYBRID XLE TOURING	HYBRID LIMITED
Hybrid System Net Power: 200 hp (149 kW)	NA	NA	NA	NA	Standard	Standard	Standard
ENGINE							
3.5-Liter V6 DOHC 24-Valve with Dual Independent Variable Valve Timing with intelligence (VVT-i); 268 hp @ 6200 rpm; 248 lb.-ft. @ 4700 rpm	Standard	Standard	Standard	Standard	NA	NA	NA
Sport, ECO and Normal Modes	NA	NA	Standard	Standard	NA	NA	NA
HYBRID ENGINE							
2.5-Liter 4-Cylinder DOHC 16-Valve Dual VVT-i; EV, ¹³ ECO and Sport Modes	NA	NA	NA	NA	Standard	Standard	Standard
IGNITION SYSTEM							
Electronic, with Toyota Direct Ignition (TDI)	Standard	Standard	Standard	Standard	Standard	Standard	Standard
EMISSION RATING							
Ultra Low Emission Vehicle (ULEV)	Standard	Standard	Standard	Standard	NA	NA	NA
Super Ultra Low Emission Vehicle (SULEV) ²⁸	NA	NA	NA	NA	Standard	Standard	Standard
ELECTRIC MOTOR							
Motor Type: Permanent magnet AC synchronous motor	NA	NA	NA	NA	Standard	Standard	Standard
Voltage: 650V maximum	NA	NA	NA	NA	Standard	Standard	Standard
TRACTION BATTERY							
Battery Type: Sealed Nickel-Metal Hydride (Ni-MH)	NA	NA	NA	NA	Standard	Standard	Standard
Voltage: 244.8V maximum	NA	NA	NA	NA	Standard	Standard	Standard
TRANSMISSION							
6-speed Electronically Controlled automatic Transmission with intelligence (ECT-i) and sequential shift mode	Standard	Standard	Standard	Standard	NA	NA	NA
Electronically controlled Continuously Variable Transmission (ECVT)	NA	NA	NA	NA	Standard	Standard	Standard
DRIVETRAIN							
Front-Wheel Drive (FWD)	Standard	Standard	Standard	Standard	Standard	Standard	Standard
BODY CONSTRUCTION							
Unitized body with front and rear anti-vibration sub-frames	Standard	Standard	Standard	Standard	Standard	Standard	Standard
SUSPENSION							
MacPherson strut front suspension with offset coil springs and stabilizer bar; dual-link independent MacPherson strut rear suspension with offset coil springs and stabilizer bar							
STEERING							
Electric Power Steering (EPS); power-assisted rack-and-pinion	Standard	Standard	Standard	Standard	Standard	Standard	Standard
Turning circle diameter, curb to curb (ft.)	40.0	40.0	40.0	40.0	40.0	40.0	40.0
BRAKES							
Power-assisted ventilated 11.65-inch front disc brakes; solid 11-inch rear disc brakes with hydraulic brake booster, Electronically Controlled Braking (ECB) and Star Safety System™							
EXTERIOR DIMENSIONS (in.)							
Overall height	57.5	57.5	57.5	57.5	57.5	57.5	57.5
Overall width	72.2	72.2	72.2	72.2	72.2	72.2	72.2
Overall length	195.3	195.3	195.3	195.3	195.3	195.3	195.3
Wheelbase	111.0	111.0	111.0	111.0	111.0	111.0	111.0
Track (front/rear)	62.6/62.2	62.6/62.2	62.6/62.2	62.6/62.2	62.6/62.2	62.6/62.2	62.6/62.2
Ground clearance	5.5	5.5	5.5	5.5	5.5	5.5	5.5
Coefficient of drag (Cd)	0.28	0.28	0.28	0.28	0.28	0.28	0.28
INTERIOR DIMENSIONS (front/rear) (in.)							
Head room	37.6/37.9	37.6/37.0	37.6/37.0	37.6/37.0	37.6/37.0	37.6/37.0	37.6/37.0
Shoulder room	58.2/57.0	58.2/57.0	58.2/57.0	58.2/57.0	58.2/57.0	58.2/57.0	58.2/57.0
Hip room	55.1/54.6	55.1/54.6	55.1/54.6	55.1/54.6	55.1/54.6	55.1/54.6	55.1/54.6
Leg room	42.1/39.2	42.1/39.2	42.1/39.2	42.1/39.2	42.1/39.2	42.1/39.2	42.1/39.2
Seating capacity	5	5	5	5	5	5	5

See numbered footnotes in Disclosures section.

I Specifications (continued)

WEIGHTS AND CAPACITIES	XLE	XLE PREMIUM	XLE TOURING	LIMITED	HYBRID XLE PREMIUM	HYBRID XLE TOURING	HYBRID LIMITED
Curb weight (lb.)	3461	3461	3505	3538	3594	3594	3638
EPA passenger volume (cu. ft.)	103.6	102.3	102.3	102.3	102.3	102.3	102.3
Cargo volume (cu. ft.)	16.0	16.0	16.0	16.0	14.0	14.0	14.0
Fuel tank (gal.)	17.0	17.0	17.0	17.0	17.0	17.0	17.0
TIRES							
Size							
P215/55R17	Standard	Standard	NA	NA	Standard	Standard	Standard
P225/45R18	NA	NA	Standard	Standard	NA	NA	NA
Type							
All-Season radials	Standard	Standard	Standard	Standard	Standard	Standard	Standard
Spare							
Temporary	Standard	Standard	Standard	Standard	Standard	Standard	Standard
MILEAGE ESTIMATES (mpg city/highway/combined)²⁹							
	21/31/25	21/31/25	21/31/24	21/31/24	40/39/40	40/39/40	40/39/40

TOYOTA FINANCIAL SERVICES



Toyota Rewards Visa[®]

Toyota helps you get more out of every dollar you spend. By rewarding you for every purchase you make, the Toyota Rewards Visa[®] adds even more value to doing the things you love.

Turn everything you buy into points to redeem toward parts, accessories or an eligible vehicle purchase or lease at your Toyota dealer. Earn 5 points for every \$1 spent at participating Toyota dealers and 1 point for every \$1 spent everywhere else Visa is accepted.*

Visit www.toyotarewardsvisa.com for complete details.

Toyota Financial Services (TFS)[†] is a leading provider of automotive financial services, offering an extensive line of financing plans along with a variety of vehicle and payment protection products to Toyota customers and dealers in the U.S. For more information on TFS products and services, visit www.toyotafinancial.com

*On approved credit. You must have a valid permanent home address in the 50 United States or the District of Columbia. Terms, conditions and restrictions apply and are fully described in the Toyota Rewards Visa Cardmember Agreement and the Toyota Rewards Program Terms and Conditions received with your card. Points earned are based on net purchases. Points-earning maximums apply and points will expire as described in the Rewards Terms and Conditions. Redemption only available at participating Toyota dealerships in the continental U.S. and Alaska. Points cannot be redeemed for cash. Please contact your participating Toyota dealer for information regarding restrictions your dealer may impose on the use of credit cards related to vehicle purchases or leases. The creditor and issuer of the Toyota Rewards Visa is Toyota Financial Savings Bank. Toyota Financial Services is a service mark used by Toyota Financial Savings Bank.

[†]Toyota Financial Services is a service mark for Toyota Motor Credit Corporation and Toyota Motor Insurance Services, Inc.

WARRANTIES

Every Toyota Car, Truck and SUV is built to exceptional standards. And that's not idle boasting. We back it up with these Limited Warranty Coverages: **Basic:** 36 months/36,000 miles (all components other than normal wear and maintenance items). **Hybrid-Related Component Coverage:** Hybrid-related components, including the HV battery, battery control module, hybrid control module and inverter with converter, are covered for 8 years/100,000 miles. The HV battery may have longer coverage under emissions warranty. Refer to applicable *Warranty and Maintenance Guide* for details. **Powertrain:** 60 months/60,000 miles (engine, transmission/transaxle, drive system, seatbelts and airbags). **Rust-Through:** 60 months/unlimited miles (corrosion perforation of sheet metal). **Emissions:** Coverages vary under Federal and California regulations. Refer to applicable *Warranty and Maintenance Guide* for details. **Accessories:** For Genuine Toyota Accessories purchased at the time of the new vehicle purchase, the Toyota Accessory Warranty coverage is in effect for 36 months/36,000 miles from the vehicle's in-service date, which is the same coverage as the Toyota New Vehicle Limited Warranty. For Genuine Toyota Accessories purchased after the new vehicle purchase the coverage is 12 months, regardless of mileage, from the date the accessory was installed on the vehicle, or the remainder of any applicable new vehicle warranty, whichever provides greater coverage, with the exception of car covers. Car covers are warranted for 12 months from the date of purchase and do not assume any coverage under the Toyota New Vehicle Limited Warranty. You may be eligible for transportation assistance if it's necessary that your vehicle be kept overnight for repairs covered under warranty. Please see your authorized Toyota dealership for further details. For complete details about Toyota's warranties, please visit www.toyota.com, refer to the applicable *Warranty and Maintenance Guide* or see your Toyota dealer.

Some vehicles are shown with available equipment. Seatbelts should be worn at all times. For details on vehicle specifications, standard features and available equipment in your area, contact your Toyota dealer. A vehicle with particular equipment may not be available at the dealership. Ask your Toyota dealer to help locate a specifically equipped vehicle. All information presented herein is based on data available at the time of printing, is subject to change without notice and pertains specifically to mainland U.S.A. vehicles only. Prototypes shown. Actual production vehicles may vary.

All information presented herein is based on data available at the time of posting, is subject to change without notice and pertains specifically to mainland U.S.A. vehicles only. Prototypes shown. Actual production vehicles may vary.

CARS BUILT FOR THE WAY YOU LIVE

At Toyota, we build cars for how you live. From building advanced safety features designed to help prevent crashes to driving cross-country to understand how we can make your driving experience better, our work starts with understanding your needs. Building cars for how you live also means thinking about tomorrow—from fuel efficiency and environmental innovations, to things beyond cars, like a bicycle that you can control with your mind. And because what we learn building cars can help improve lives in other places, we do things like help communities rebuild their homes quickly after a disaster and work with soup kitchens to help them serve more people faster. Toyota. Built for how you live. Together we are going places.

DISCLOSURES

1. Toyota strives to build vehicles to match customer interest and thus they typically are built with popular options and option packages. Not all options/packages are available separately and some may not be available in all regions of the country. See toyota.com for information about options/packages commonly available in your area. If you would prefer a vehicle without any or with different options, contact your dealer to check for current availability or the possibility of placing a special order. 2. The Automatic High Beam system operates at speeds above 21 mph. Situations such as a dirty windshield, variable weather, lighting conditions and hilly terrain will limit effectiveness, requiring the driver to manually turn off. See *Owner's Manual* for details. 3. May not be compatible with all mobile phones, MP3/WMA players and like models. 4. iPod® and iPhone® are registered trademarks of Apple Inc. All rights reserved. 5. The Bluetooth® word mark and logos are registered trademarks owned by Bluetooth SIG, Inc. and any use of such marks by Toyota is under license. Other trademarks and trade names are those of their respective owners. The phones on Toyota.com have been tested for Bluetooth® wireless technology compatibility with Toyota vehicles. Performance will vary based on phone software version, coverage and your wireless carrier. Phones are warranted by their manufacturer, not Toyota. 6. Always drive safely, obey traffic laws and focus on the road and traffic conditions while driving. Availability and accuracy of the information provided by the Navigation system or any HD services are dependent upon many factors. Use common sense when relying on information provided. Services and programming subject to change. Services not available in every city or roadway. Navigation updates are available at an additional cost from your Toyota dealer. See your *Navigation System Owner's Manual* or Toyota dealer for details. HD Radio™ Technology manufactured under license from iBiquity Digital Corporation U.S. and Foreign Patents. HD Radio™ and the HD, HD Radio, and “Arc” logos are proprietary trademarks of iBiquity Digital Corp. 7. Always drive safely, obey traffic laws and focus on the road and traffic conditions while driving. Select Entune® App Suite apps use a large amount of data and you are responsible for all data charges. Apps and services vary by phone and carrier; not all services available all the time and in all locations, and are subject to change. Apps identified by “TM” or “®” are trademarks or registered trademarks of their respective companies and cannot be used without permission. See toyota.com/entune for the latest information regarding registration, apps and services, and other details. 8. SiriusXM services require a subscription after 90-day trial period, and are sold separately or as a package. **Subscriptions governed by SiriusXM Customer Agreement; see available at www.siriusxm.com. If you decide to continue your SiriusXM service at the end of your complimentary trial, the plan you choose will automatically renew and bill at then-current rates until you call 1-866-635-2349 to cancel.** Fees and programming subject to change. Available only to those at least 18 years of age in the 48 contiguous United States and D.C. 9. iTunes® Tagging is a registered trademark of Apple Inc. All rights reserved. 10. Advanced voice recognition capabilities vary by head unit. 11. The backup camera does not provide a comprehensive view of the rear area of the vehicle. You should also look around outside your vehicle and use your mirrors to confirm rearward clearance. Cold weather will limit effectiveness and view may become cloudy. 12. Dynamic Radar Cruise Control is designed to assist the driver and is not a substitute for safe and attentive driving practices. Please see your *Owner's Manual* for important instructions and cautions. 13. CAUTION! When driving a hybrid vehicle, pay special attention to the area around the vehicle. Because there is little vehicle noise in electric-only mode, pedestrians, people riding bicycles or other people and vehicles in the area may not be aware of the vehicle starting off or approaching them, so take extra care while driving. 14. The Smart Key System may interfere with some pacemakers or cardiac defibrillators. If you have one of these medical devices, please talk to your doctor to see if you should deactivate this system. 15. HomeLink® is a registered trademark of Johnson Controls, Inc. 16. Do not rely exclusively on the Blind Spot Monitor to determine if a lane change is safe. Always look over your shoulder and use your turn signal before changing lanes. There are several limitations to the function, detection, range and clarity of the monitor. For a complete list of limitations and directions regarding use of the monitor, please see the *Owner's Manual*. 17. Do not rely exclusively on the Rear Cross-Traffic Alert system. Always look over your shoulder and use your mirrors to confirm rear clearance. There are limitations to the function, detection, range and clarity of the system. To learn more, see your *Owner's Manual*. 18. The Pre-Collision System is designed to help reduce the crash speed and damage in certain frontal collisions only. They are not collision-avoidance systems and are not substitutes for safe and attentive driving. System effectiveness depends on many factors such as speed, driver input and road conditions. See your *Owner's Manual* for further information. 19. Qi wireless charging may not be compatible with all mobile phones, MP3/WMA players and like models. 20. Vehicle Stability Control (VSC) is an electronic system designed to help the driver maintain vehicle control under adverse conditions. It is not a substitute for safe driving practices. Factors including speed, road conditions and driver steering input can all affect whether VSC will be effective in preventing a loss of control. Please see your *Owner's Manual* for further details. 21. Brake Assist is designed to help the driver take full advantage of the benefits of ABS. It is not a substitute for safe driving practices. Braking effectiveness also depends on proper brake-system maintenance and tire and road conditions. 22. Smart Stop Technology® operates only in the event of certain simultaneous brake and accelerator pedal applications. When engaged, the system will reduce power to help the brakes bring the vehicle to a stop. Factors including speed, road conditions and driver input can all impact stopping distance. Smart Stop Technology® is not a substitute for safe and attentive driving and does not guarantee instant stopping. Please see your *Owner's Manual* for further details. 23. All the airbag (AB) systems are Supplemental Restraint Systems. All ABs (if installed) are designed to inflate only under certain conditions and in certain types of severe collisions: frontal and knee ABs typically inflate in frontal collisions; side and side curtain ABs in side collisions; Roll-Sensing Curtain ABs at a severe tilt degree, roll or lateral G-force. In all other accidents, the ABs will not inflate. To decrease the risk of injury from an inflating AB, always wear seatbelts, sit upright in the middle of the seat as far back as possible and do not lean against the door. Do not put objects in front of an AB or around the seatback. Do not use a rearward-facing child seat in any front passenger seat. The force of an inflating AB may cause serious injury or death. See your *Owner's Manual* for further information/warnings. 24. Whiplash-Injury-Lessening front seats can help reduce the severity of whiplash injury in certain rear-end collisions. 25. The Toyota Tire Pressure Monitor alerts the driver when tire pressure is critically low. For optimal tire wear and performance, tire pressure should be checked regularly with a gauge; do not rely solely on the monitor system. See your *Owner's Manual* for details. 26. Contact with the Safety Connect® response center is dependent upon the telematics device being in operative condition, cellular connection availability, navigation map data and GPS satellite signal reception, which can limit the ability to reach the response center or receive emergency service support. Enrollment and Telematics Subscription Service Agreement required. A variety of subscription terms is available; charges vary by subscription term selected. 27. The engine immobilizer is a state-of-the-art anti-theft system. When you insert your key into the ignition switch or bring a Smart Key fob into the vehicle, the key transmits an electronic code to the vehicle. The engine will only start if the code in the transponder chip inside the key or Smart Key fob matches the code in the vehicle's immobilizer. Because the transponder chip is embedded in the key or Smart Key fob, it can be costly to replace. If you lose a key or Smart Key fob, your Toyota dealer can help, or you can find a qualified independent locksmith to perform high-security key services by consulting your local Yellow Pages or by contacting at www.aloa.org. 28. Meets Tier 2/Bin 3 Federal emissions standard. 29. 2014 EPA-estimated mileage. Actual mileage will vary. 30. The Toyota Genuine Accessory Warranty will only apply when the installation is performed by a trained Toyota-approved installer. Please see dealer for details. 31. Cargo and load capacity limited by weight and distribution. 32. To avoid potential interference with pedal operation, do not install a floor mat on top of an existing floor mat. Each mat must be secured with either quarter-turn fasteners or retention hooks (clips). This floor mat was designed specifically for use in this model year vehicle and SHOULD NOT be used in any other vehicle..