



Innovation
that excites

2014 **SENTRA**[®]

WELCOME TO THE 2014 NISSAN SENTRA[®] DIGITAL BROCHURE

Full of images, feature stories, and all the specification and trim level information you need to help select your Sentra.[®]

[Click here](#) to sign up for news and updates on the 2014 Nissan Sentra.[®]



WOULDN'T IT BE COOL IF_

YOU COULD HAVE YOUR "SOMEDAY" CAR TODAY?

Some say patience is a virtue. We say you've waited long enough. Sentra® completely redefines what an affordable car can be and proves the good life is well within reach. With tasteful styling inside and out. Advanced available features you'll love, including Pandora®-friendly audio and a huge interior with surprising luxuries like Dual Zone Automatic Temperature Control and Push Button Ignition. The drive's special too, with a super-smooth Xtronic CVT® transmission and up to 40 MPG Highway.¹ The 2014 Nissan Sentra.® You've arrived, and well ahead of schedule.



What if your car had a purpose in life? More than just a pretty face, Sentra®'s design was perfected in the wind tunnel to create a ride that's as refined as it is fuel-efficient.¹ As enticing as each detail is, Sentra® was designed as a complete vision of what a modern sedan should be.



Nissan Sentra® SR shown in Magnetic Gray with optional equipment.

¹2014 EPA Fuel Economy Estimate 40 MPG City (FE+ models). Actual mileage may vary with driving conditions.

IT'S TIME YOU OWNED SOMETHING BEAUTIFUL.

At first glance, the Sentra® is an eye-catching design. But look closer and you'll see even more. Deep character lines that sculpt the sides. Wide "shoulders" over the fender that require an innovative stamping technology. From an aerodynamic roof to 17" wheels, from boomerang-shaped headlights to LED taillights. And everything in between.



Nissan Sentra® SR shown in Brilliant Silver with optional equipment.



Click the button to see a short video on Sentra's sleek, exciting design. Or go to bit.ly/sentrastyling

DESIGNED JUST FOR YOU.

It's important to be surrounded by things you love. Like a flowing dashboard design inspired by a bird's wing. Soft-touch materials throughout the cabin and unexpected available luxuries like rich wood-tone trim and perforated leather-appointed seats that come together to create a very personal space. Even little touches, like convenient storage pockets on the front of the driver's and passenger's lower seat cushions and an available sliding center armrest for a perfect fit. This is Sentra,[®] exactly the way you want it.



Click the button to see a short video on Sentra's premium interior. Or go to bit.ly/sentrainterior

Nissan Sentra[®] SL shown in Marble Gray Leather with optional equipment.

NISSANCONNECT™¹

INNOVATION THAT KEEPS YOUR WORLD WITHIN REACH.

NissanConnect™ is available smart technology that you'll find incredibly handy. With NissanConnect™ Apps, your Sentra® becomes your smartphone's best friend. Music, information, and the apps that keep you connected to your world all work seamlessly together right through Sentra®'s touch-screen. And it keeps on getting better: the latest apps are easily updated via your smartphone and the basic app package is free for the first three years.¹

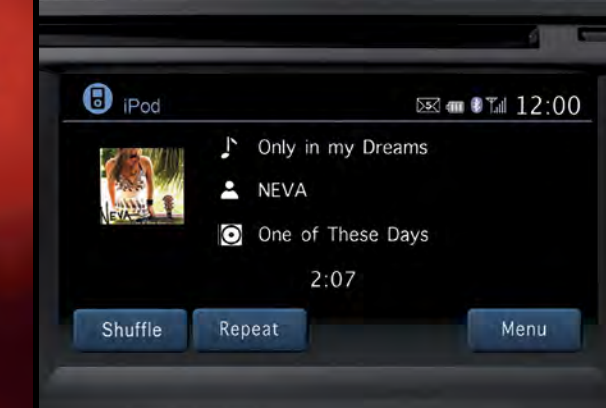
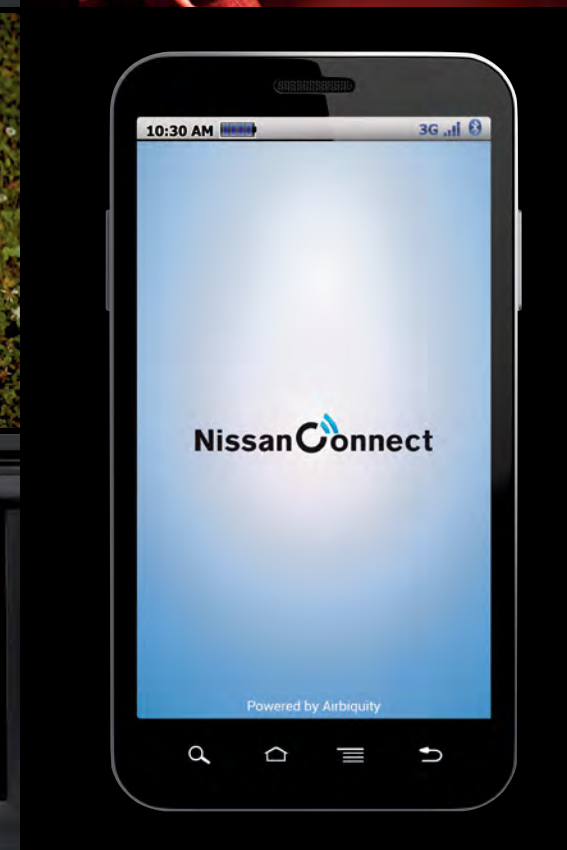
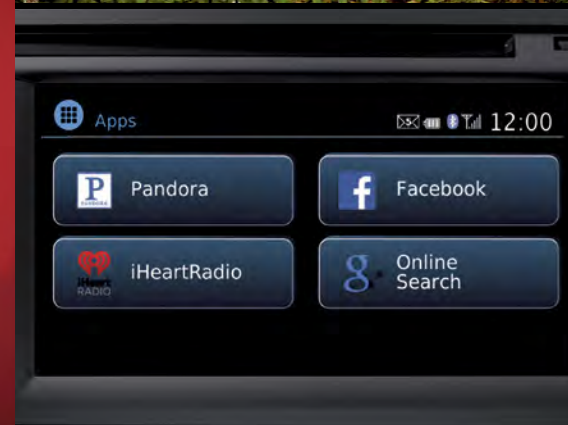
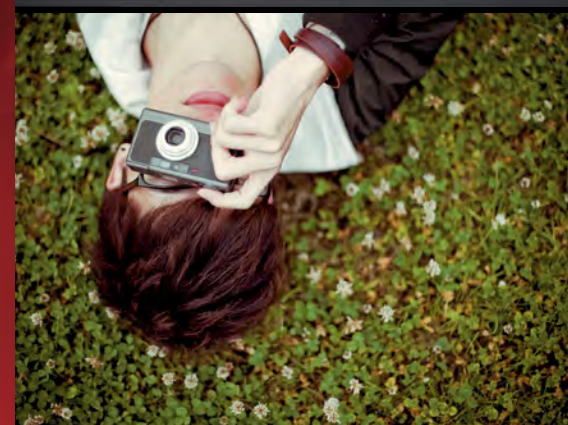
NissanConnect™ Apps: for the music you love.¹ Imagine the choices you have with Pandora,[®] iHeartRadio,[™] Slacker,[®] and more. It couldn't be easier – once you download the app, you can listen to your favorite streaming audio app and have control of common features via your audio system.^{2,3} You can find out how to download the app and more at www.NissanUSA.com/connect.

NissanConnect™ Apps: everything that matters at your fingertips.¹ You're wired to your world with the NissanConnect™ Apps. Sentra®'s touch-screen lets you keep track of Twitter,[®] Facebook,[®] and more. And with location-based services including online search powered by Google[®] and Yelp,[®] getting around has never been easier.^{2,3} In the near future, premium apps will be added, helping you find everything from low gas prices to movie tickets to parking – even letting you reserve a table at your favorite restaurant.^{3,4} You can find out more about the app and feature availability at www.NissanUSA.com/connect.

More than just apps, NissanConnect™ keeps you in the loop with:

- Nissan Navigation System¹ – with voice recognition featuring one-shot destination entry; SiriusXM[®] Traffic and Travel Link^{®3}
- iPod[®]/USB input⁵ – search for a tune with enhanced voice recognition
- Streaming audio via Bluetooth^{®6}
- Hands-free text messaging assistant^{7,8}

¹Driving is serious business. Only use NissanConnect™ services when safe to do so. Subscription Agreement required. Compatible smartphone required. Not all app features are available for all models. Some apps have late availability. May require dealer service visit or software upgrade to activate. Never program while driving. GPS mapping may not be detailed in all areas or reflect current road regulations. Cellular network not available in all areas. Cellular network, apps, and services, including Google[®] services, are provided by independent companies not within Nissan's control and may require subscription and owner consent to activate. Should provider terminate/restrict service, service may be terminated without notice or liability to Nissan and/or its agents. Nissan not responsible for any equipment or app replacement/upgrades, or associated costs, that may be required for continued operation. Terms and conditions of Subscription Agreement apply. 36-month trial period starts on vehicle sale date; subsequently a paid subscription is required at the then current rate (excludes Pandora[®]). Standard text rates and/or data usage may apply. See retailer and check www.NissanUSA.com/connect for details. ²Never program while driving. GPS mapping may not be detailed in all areas or reflect current road regulations. ³Required SiriusXM[®] Satellite Radio, SiriusXM[®] Traffic and Travel Link[®] subscriptions sold separately after trial period. Installation costs, one-time activation fee, other fees and taxes will apply. SiriusXM[®] Traffic available in select markets. Services available only to those 18 or older in the 48 contiguous states and D.C. Fees and programming subject to change. Subscriptions governed by Customer Agreement available at siriusxm.com. ©2014 Sirius XM Radio Inc. Sirius[®], XM[®] and all related marks and logos are trademarks of Sirius XM Radio Inc. ⁴Points of Interest and/or Send-to-Car may require subscription and owner consent to activate. Certain services, including Google Points of Interest and/or Send to Car, provided by independent companies not within Nissan's control. Should service provider terminate/restrict service, service may be suspended or terminated without notice or liability to Nissan and/or its agents. Nissan not responsible for any equipment replacement or upgrades, or associated costs, that may be required for continued operation due to service changes. ⁵Driving is serious business and requires your full attention. Do not operate any devices connected to the USB or auxiliary audio input jack while driving. iPod[®] is a registered trademark of Apple, Inc. All rights reserved. iPod not included. ⁶Availability of specific features is dependent upon the phone's Bluetooth[®] support. Please refer to your phone Owner's Manual for details. The Bluetooth word mark and logos are owned by Bluetooth SIG, Inc., and any use of such marks by Nissan is under license. ⁷Driving is serious business and requires your full attention. Only use phone or other communication devices when safe. ⁸Use the text messaging feature after stopping your vehicle in a safe location. If you have to use the feature while driving, exercise extreme caution at all times so full attention may be given to vehicle operation. Facebook[®] is a registered trademark of Facebook, Inc. Google[®] is a registered trademark of Google Inc. iHeartRadio[™] is a trademark of Clear Channel Broadcasting Inc. Pandora[®] is a registered trademark of Pandora Media. Slacker[®] is a registered trademark of Slacker, Inc. Twitter[®] is a registered trademark of Twitter, Inc.



ENTERING BONUS TERRITORY.

The perks that make it all worthwhile. The kind of available little touches you expect in a luxury car.



Bose® Premium Audio.

Designed expressly for Sentra®'s interior with eight individually tuned speakers for unmatched sound quality.

Nissan Intelligent Key.®

Lets you lock and unlock the doors and trunk, start the engine, and drive away – all without removing it from your pocket or purse.



Push Button Ignition.

No fumbling for a key. Just a simple touch and away you go.



Smart Auto Headlights.

Automatically turn on when it starts getting dark. Also turn on after four swipes of the wipers, to help you see better in poor weather.



Dual Zone Automatic Temperature Control.

You like it warm. Your front passenger likes it cool. No problem. Separate controls let each of you dial in your ideal setting.



Fine Vision Electroluminescent Gauges.

Added depth gives a crystal-like quality. Easy to read at a glance.



Goodbye cubicle, hello window office. It's amazing what a change of scenery can do for your perspective. In Sentra,[®] you have a bright, airy interior, with spacious rear seat leg room – even more than Civic,[®] Elantra,[®] Cruze,[®] or Focus.^{®1}

¹2014 Nissan Sentra[®] vs. 2014 Honda Civic[®] Sedan, 2014 Hyundai Elantra[®] Sedan, 2014 Chevy Cruze[®], and 2014 Ford Focus[®] Sedan. Civic,[®] Elantra,[®] Cruze[®] and Focus[®] are registered trademarks of other companies.

Nissan Sentra[®] SR shown in Charcoal Premium Sport Cloth with optional equipment.



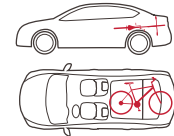
Click the button to see a video on Sentra®'s amazingly spacious interior. Or go to bit.ly/sentracargo



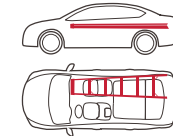
Plenty of room for your loved ones. There's no separation anxiety with Sentra®'s smart storage, including a cavernous trunk with 15.1 cubic feet of cargo space – that's comparable to some midsize sedans. Need more room? The 60/40 split fold-down rear seat gives you space that would make a hatchback jealous, with room to hold four golf bags, a bike, or just about anything you want to bring along.¹

¹Cargo shown for display purposes only. Nissan recommends that all loose items be secured when transported. Cargo and load capacity limited by weight and distribution.

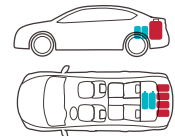
1 BIKE



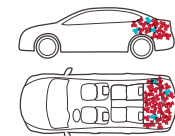
1 LADDER



6 PIECES OF LUGGAGE



98 STUFFED ANIMALS





NISSAN PUREDRIVE™

INNOVATION THAT GIVES YOU THE BEST OF BOTH WORLDS.

.27 Drag coefficient, thanks to an exceptionally aerodynamic design¹

4 Low rolling resistance tires that use less energy to roll, so you use less fuel¹

40 MPG Up to 40 MPG Highway, so you can breeze past the pump with ease²

Wouldn't it be cool if you didn't need a cramped car, a tiny engine, or a hybrid powertrain to save fuel? With Sentra, you get excellent fuel economy in a roomy, comfortable car that's lots of fun to drive. We got there by developing everything from exterior aerodynamics that whisper through the wind to a powerful, 1.8-liter engine teamed with a virtually gearless CVT transmission that helps maximize efficiency and performance. The PUREDRIVE™ badge also means that Sentra meets or exceeds the industry-average US Federal CAFE standards for model-year 2016.³ And best of all, Sentra is just one of a family of PUREDRIVE™ vehicles, reflecting Nissan's commitment to developing more environmentally friendly transportation for all of us.³

ECO PEDAL INDICATOR



A smarter way to drive. In Sentra, an Eco Pedal Indicator in the instrument cluster gives you instant feedback on how you're driving, helping you become a smarter, more efficient driver.



Click this button to see a short video on Sentra's advanced CVT transmission. Or go to bit.ly/sentracvt

Aerodynamic Shape



1.8-L 4-cylinder Engine

CVT Transmission

¹FE+ models only. ²2014 EPA Fuel Economy Estimate. 40 MPG for FE+ models only. Actual mileage may vary with driving conditions — use for comparison only. ³Adoption criteria above are based upon US Federal CAFE standards as of July 2011 for MY 2016. Federal standards subject to change by US government.

LIKE HAVING THREE DIFFERENT CARS AT YOUR FINGERTIPS.

With the simple push of a button, you can custom-tailor Sentra® to match your mood. So what will it be today? Eco, Normal, or Sport?



ECO

Feeling thrifty? In Eco mode, Sentra® adjusts engine and transmission response to maximize fuel efficiency and even adjusts the air conditioning for less draw on the power.



NORMAL

Something for everybody. Normal mode gives you a perfect blend of efficiency and response.



SPORT

Curvy roads ahead? Sport mode sharpens engine and CVT transmission response to rev up your senses.

NISSAN SAFETY SHIELD® PHILOSOPHY

INNOVATION THAT LOOKS OUT FOR YOU.

Wouldn't it be cool if you had the confidence you needed for every part of your drive? The Nissan Safety Shield® technologies are a comprehensive approach to safety that guide the engineering and development of every vehicle we make. By keeping an eye on your vehicle's systems and the surroundings, assisting in handling unexpected situations, and helping to keep you safe in the unfortunate event of an accident, the Nissan Safety Shield® technologies are our way of looking out for you and yours.

MONITOR

Smart technologies help monitor conditions. Like a rearview camera that helps you see something behind you, or a system that helps ensure you're travelling on properly inflated tires.

Tire Pressure Monitoring System with Available Class-exclusive Easy-Fill Tire Alert^{1, 2, 3} Lets you know when a tire is low. And Easy-Fill Tire Alert takes the guesswork out of filling your tires, with a beep of the horn when you've reached the correct pressure.

Available RearView Monitor⁴ Helps you see what's directly behind you when you engage Reverse.

Available Smart Auto Headlights

RESPOND

Whether you need to hit the brakes hard or maneuver around an unexpected obstacle, these standard technologies help you respond to a potentially harmful situation.

Vehicle Dynamic Control helps you maintain your steered path.⁵

Traction Control System helps reduce wheelspin in low-traction situations.

Anti-lock Braking System helps you maintain steering control around obstacles while braking heavily.

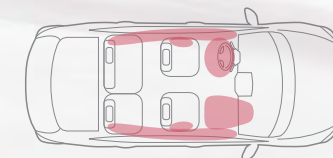
Electronic Brake force Distribution sends extra force to the rear brakes when you have additional weight of passengers or cargo in the back.

Brake Assist helps apply maximum braking force if it detects hard braking and senses you are in an emergency situation.



PROTECT

When a collision is unavoidable, Nissan's Zone Body construction helps absorb the impact while the advanced seat belt and air bag systems help protect everyone on board.



6 STANDARD AIR BAGS⁶

Nissan Advanced Air Bag System with dual-stage supplemental front air bags with seat-belt and occupant-classification sensors⁶

Front seat-mounted side-impact supplemental air bags⁶

Roof-mounted curtain side-impact supplemental air bags⁶

LATCH System (Lower Anchors and Tethers for Children)

snug4kids.

Nissan safety engineers have dedicated thousands of hours to evaluating hundreds of child restraints in Nissans. The result: an industry first, The Snug Kids® Child Safety Seat Fit Guide. This guide lists child seats that fit the rear seats of Nissan vehicles, as well as offers invaluable tips on correct installation. Look for the latest Fit Guide at NissanUSA.com/SnugKids.



Click this link to see a short video on how Snug Kids helps you find the right CRS for your Nissan. Or go to bit.ly/NissanSnugKids

¹Tire Pressure Monitoring System is not a substitute for regular tire pressure checks. ²Ward's segmentation. 2014 Sentra® vs. 2013 and 2014 Upper Small Class. ³Vehicle must be on for the Easy-Fill Tire Alert to operate. ⁴Parking aid/convenience feature. Cannot completely eliminate blind spots or warn of moving objects. May not detect every object. Always check surroundings before moving vehicle. Not a substitute for proper backing procedures. Always turn to check what is behind you before backing up. ⁵VDC, which should remain on when driving except when freeing the vehicle from mud or snow, cannot prevent accidents due to abrupt steering, carelessness, or dangerous driving techniques. Always drive safely. ⁶Air bags are only a supplemental restraint system; always wear your seat belt. Even with the occupant-classification sensor, rear-facing child restraints should not be placed in the front-passenger's seat. Also, all children 12 and under should ride in the rear seat properly secured in child restraints, booster seats, or seat belts according to their size. Air bags will only inflate in certain accidents; see your Owner's Manual for more details. Inflated air bags shown for illustration purposes only, actual coverage area may differ. Air bags deflate after deployment.



Click this link to see a short video on Genuine Nissan Accessories in action. Or go to bit.ly/gnavideos_sentra

OFF TO A GREAT START.

GENUINE NISSAN ACCESSORIES.

Every Genuine Nissan Accessory is custom-fit, custom-designed, and durability-tested. Each one is backed by Nissan's 3-year/36,000-mile (whichever occurs first) limited warranty and can be financed when installed by dealer at time of purchase.¹ See your Nissan dealer for more information on accessories, or log on to parts.NissanUSA.com.

- A. Fog Lights**
Help you cut like a knife through pea soup.
- B. Hideaway Trunk Net²**
Catch of the day – no mess!
- C. All-season Floor Mats**
Neither sleet, snow, nor mud shall mess your ride.
- D. External Ground Lighting (Sentra SR only)**
Lights. Sentra.[®] Action!
- E. Rear Decklid Spoiler**
Leave a stylish lasting impression.
- F. Illuminated Kick Plates**
Fewer scuffs and a grand entry, every time.
- G. Interior Accent Lighting**
Bring the bling with 20 pre-programmed color options.
- H. Clear Rear Bumper Protector**
It's see-through, but it's not naughty.

Additional Accessories:

- 16" Silver Aluminum-alloy Wheels
- Carpeted Floor Mats
- Splash Guards
- Chrome Body Side Moldings
- Body Side Moldings
- Nose Mask
- Moonroof Wind Deflector
- Trunk Protector
- Carpeted Trunk Mat
- Auto-dimming Rearview Mirror with HomeLink[®] and Compass
- BlueConnect[®] Bluetooth[®] Hands-free Phone System³
- And More

¹Covered by Nissan's Limited Warranty on Genuine Nissan Accessories for the longer of 12 months/12,000 miles (whichever occurs first) or the remaining period under the 3-year/36,000-mile (whichever occurs first) Nissan New Vehicle Limited Warranty. Terms and conditions apply. See Warranty Information Booklet for details. ²Cargo and load capacity limited by weight and distribution. Always secure all cargo. ³Availability of specific features is dependent upon the phone's Bluetooth[®] support. Please refer to your phone Owner's Manual for details. The Bluetooth word mark and logos are owned by Bluetooth SIG, Inc., and any use of such marks by Nissan is under license. ⁴Limited availability. Sentra SV with Premium Package no longer available after November 2013 production. BlueConnect[®] is a registered trademark of Johnson Controls Technology Company. HomeLink[®] is a registered trademark of Johnson Controls Technology Company.



For more information and to shop online for Genuine Nissan Accessories, go to bit.ly/sentragna.

Nissan Sentra[®] SV with Premium Package⁴ shown in Red Brick with 16" Silver Aluminum-alloy Wheels, Fog Lights, Moonroof Wind Deflector, Body Side Moldings, Splash Guards, and Rear Decklid Spoiler.



CHOOSE YOUR TRIM LEVEL

S

- 1.8-liter 4-cylinder engine
- 6-speed manual transmission or Xtronic CVT® transmission
- Eco and Sport drive modes
- Anti-lock Braking System (ABS)
- Vehicle Dynamic Control (VDC) with Traction Control System (TCS)
- Halogen headlights with LED accent lights
- LED taillights
- Power windows and door locks
- Trip computer and outside temperature display
- Air conditioning with in-cabin microfilter
- AM/FM/CD audio system with four speakers and auxiliary audio input jack¹
- Fine Vision electroluminescent gauges
- Tire Pressure Monitoring System (TPMS)
- Six standard air bags (including roof-mounted curtain side-impact supplemental air bags)



FE+® SV

INCLUDES SV EQUIPMENT PLUS:

- Rear spoiler
- Underbody and rear tire aerodynamic deflectors
- Special low rolling resistance tires



FE+® S

INCLUDES S EQUIPMENT PLUS:

- Standard Xtronic CVT® transmission
- Rear spoiler
- Underbody and rear tire aerodynamic deflectors
- Special low rolling resistance tires



SR

INCLUDES SV EQUIPMENT PLUS:

- 17" Forked 5-spoke aluminum-alloy wheels
- Sport front and rear fascias (including sport grille)
- Lower body side sill extensions
- Rear spoiler with integrated brake light
- Fog lights
- Chrome exhaust finisher
- Premium Sport cloth seat trim
- Sport silver interior trim
- Driver's seatback pocket

KEY AVAILABLE PACKAGES:

- SR Driver Package
- Navigation Package
- Premium Package



SV

INCLUDES S EQUIPMENT PLUS:

- Standard Xtronic CVT® transmission
- Illuminated steering wheel-mounted cruise and audio controls
- AM/FM/CD audio system with six speakers
- Premium cloth seat and door trim
- Fine Vision electroluminescent gauges with chrome accents
- Vehicle Security System

KEY AVAILABLE PACKAGES:

- SV Driver Package
- Navigation Package



SL

INCLUDES SV EQUIPMENT PLUS:

- 17" Split 7-spoke aluminum-alloy wheels
- Smart Auto Headlights and fog lights
- Heated mirrors with LED turn signals
- Nissan Intelligent Key® with Push Button Ignition
- 4.3" color display for audio system
- SiriusXM® Satellite Radio²
- Bluetooth® Hands-free Phone System³
- USB connection port
- Leather-wrapped steering wheel
- Maple wood-tone interior trim
- Sliding front armrest
- Dual Zone Automatic Temperature Control
- TPMS with Easy-Fill Tire Alert

KEY AVAILABLE PACKAGES:

- Leather Package
- Navigation Package
- Premium Package



¹Driving is serious business and requires your full attention. Do not operate any devices connected to the USB or auxiliary audio input jack while driving. ²Required SiriusXM® Satellite Radio, SiriusXM® Traffic and Travel Link® subscriptions sold separately after trial period. Installation costs, one-time activation fee, other fees and taxes will apply. SiriusXM® Traffic available in select markets. Services available only to those 18 or older in the 48 contiguous states and D.C. Fees and programming subject to change. Subscriptions governed by Customer Agreement available at siriusxm.com. ©2014 Sirius XM Radio Inc. Sirius® XM® and all related marks and logos are trademarks of Sirius XM Radio Inc. ³Availability of specific features is dependent upon the phone's Bluetooth® support. Please refer to your phone Owner's Manual for details. The Bluetooth® word mark and logos are owned by Bluetooth SIG, Inc., and any use of such marks by Nissan is under license.

CHOOSE YOUR FABRIC



MARBLE GRAY
CLOTH
(S, FE+® S)



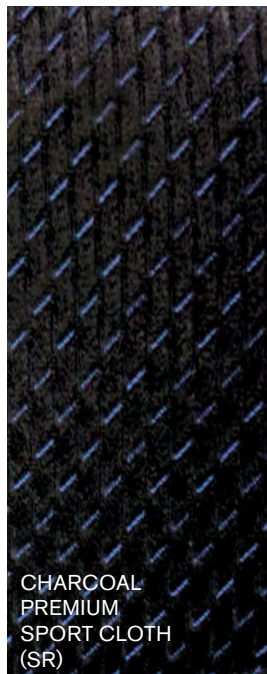
CHARCOAL
CLOTH
(S, FE+® S)



MARBLE GRAY
PREMIUM
CLOTH
(SV, FE+® SV, SL)



CHARCOAL
PREMIUM
CLOTH
(SV, FE+® SV, SL)



CHARCOAL
PREMIUM
SPORT CLOTH
(SR)



MARBLE GRAY
LEATHER
(SL)



CHARCOAL
LEATHER
(SL)



SPECIFICATIONS

Engine	S	FE+ ^S	SV	FE+ ^{SV}	SR	SL
MRA8DE – 1.8-liter DOHC 16-valve						
4-cylinder engine	■	■	■	■	■	■
130 hp ¹ @ 6,000 rpm						
128 lb-ft of torque ¹ @ 3,600 rpm						
Compression ratio – 9.9:1						
Emissions – Tier 2, Bin 5 (LEV2-SULEV on CA emission vehicles)	■	■	■	■	■	■
Continuously Variable Valve Timing Control System (CVTCS) on intake and exhaust valves	■	■	■	■	■	■
Nissan Direct Ignition System	■	■	■	■	■	■
Electronic drive-by-wire throttle	■	■	■	■	■	■

Drivetrain	S	FE+ ^S	SV	FE+ ^{SV}	SR	SL
Front engine/Front-Wheel Drive	■	■	■	■	■	■
6-speed manual transmission	■					
Xtronic CVT [®] (Continuously Variable Transmission)	□	■	■	■	■	■

Brakes	S	FE+ ^S	SV	FE+ ^{SV}	SR	SL
11.0" Vented front disc/9.0" rear drum brakes	■	■	■	■	■	■
11.5" Solid rear disc brakes				■	■	■
4-wheel Anti-lock Braking System (ABS)	■	■	■	■	■	■
Electronic Brake force Distribution (EBD)	■	■	■	■	■	■
Brake Assist (BA)	■	■	■	■	■	■

Suspension/Steering	S	FE+ ^S	SV	FE+ ^{SV}	SR	SL
Independent strut front suspension	■	■	■	■	■	■
Torsion beam rear axle with integrated rear stabilizer bar	■	■	■	■	■	■
Front stabilizer bar	■	■	■	■	■	■
Vehicle-speed-sensitive electric power steering	■	■	■	■	■	■

Wheels/Tires	S	FE+ ^S	SV	FE+ ^{SV}	SR	SL
16" x 6.5" steel wheels with wheel covers	■	■	■	■		
17" x 6.5" forked 5-spoke dark-finished aluminum-alloy wheels					■	
17" x 6.5" split 7-spoke aluminum-alloy wheels						■
P205/55HR16 all-season tires	■		■			
P205/55HR16 all-season low rolling resistance tires		■		■		
P205/50VR17 all-season tires					■	■

Exterior Features	S	FE+ ^S	SV	FE+ ^{SV}	SR	SL
Halogen headlights with LED accent lights	■	■		■	■	■
Smart Auto Headlights			■		■	■
Fog lights					■	■
LED taillights	■	■	■	■	■	■
Chrome grille	■	■	■	■		■
Sport grille					■	
Sport front and rear fascias					■	
Lower body side sill extensions					■	
Rear tire and underbody aero deflectors		■		■		
Chrome exhaust finisher					■	
Rear spoiler		■		■		
Rear spoiler with integrated LED brake light					■	
Dual power outside mirrors	■	■	■	■	■	
Dual power heated outside mirrors with LED turn signal indicators						■
Power sliding glass moonroof with tilt feature					■	■

Comfort/Convenience	S	FE+ ^S	SV	FE+ ^{SV}	SR	SL
NissanConnect™ with Navigation including 5.8" QVGA color touch-screen monitor and Voice Recognition for audio and navigation			■		■	■
NissanConnect™ Apps ²			■		■	■
SiriusXM [®] Traffic and Travel Link ^{®3}			■		■	■
Hands-free text messaging assistant			■		■	■
Bluetooth [®] Hands-free Phone System ⁴			■		■	■
RearView Monitor			■		■	■
Fine Vision electroluminescent gauges	■	■	■	■	■	■
Trip computer (average MPG, current MPG, distance to empty, average speed) with outside temperature display	■	■	■	■	■	■
Integrated Key with remote keyless entry and trunk release	■	■	■	■	■	
Nissan Intelligent Key [®] with Push Button Ignition			■		■	■
Power windows with driver's window one-touch auto-up/down	■	■	■	■	■	■
Air conditioning with in-cabin microfilter	■	■	■	■	■	
Dual Zone Automatic Temperature Control (ATC) with in-cabin microfilter						■
Rear seat heating vents under front seats						■

Comfort/Convenience (continued)	S	FE+ ^S	SV	FE+ ^{SV}	SR	SL
Cruise control with illuminated steering wheel-mounted controls			■	■	■	■
Driver's seatback map pocket					■	■
Front passenger's seatback map pocket	■	■	■	■	■	■
Driver's and front passenger's seat lower cushion storage pockets	■	■	■	■	■	■
Center console with adjustable cup holders and storage bin	■	■	■	■	■	■
Sliding front armrest			■		■	■
Rear-seat center armrest with cup holders	■	■	■	■	■	■
Variable intermittent flat-blade windshield wipers	■	■	■	■	■	■
Sun visors with vanity mirrors and extension	■	■	■	■	■	■
Sun visors with illuminated vanity mirrors and extension					■	■
Auto-dimming rearview mirror with compass					■	■
Two auxiliary 12-volt DC power outlets	■	■	■	■	■	■

Seating/Appointments	S	FE+ ^S	SV	FE+ ^{SV}	SR	SL
6-way manual adjustable driver's seat	■	■	■	■	■	■
4-way manual adjustable front-passenger's seat	■	■	■	■	■	■
Cloth seat trim	■	■				
Premium cloth seat trim			■	■		■
Premium sport cloth seat trim					■	
Leather-appointed seats						■
Heated front seats						■
60/40 Split fold-down rear seats	■	■	■	■	■	■
Leather-wrapped steering wheel			■		■	■
Chrome accents on gauges			■	■	■	■
Silver interior trim	■	■	■	■		
Sport silver interior trim					■	
Maple wood-tone interior trim						■

Audio/Entertainment	S	FE+ ^S	SV	FE+ ^{SV}	SR	SL
AM/FM/CD audio system	■	■	■	■	■	
AM/FM/CD audio system with 4.3" QVGA color monitor			■		■	■
Bose [®] Premium Audio System with AM/FM/CD and 5.8" QVGA color monitor					■	■
Four speakers	■	■				
Six speakers			■	■	■	■

■ Standard □ Part of SV/SR Driver Package ■ Part of Navigation Package
 □ Optional □ Part of Leather Package □ Part of Premium Package

SPECIFICATIONS (CONTINUED)

Audio/Entertainment (continued)	S	FE+ [®] S	SV	FE+ [®] SV	SR	SL
Eight speakers, including two subwoofers					P	P
USB connection port for iPod [®] interface and other compatible devices			D		D	
Auxiliary audio input jack						
SiriusXM [®] Satellite Radio ³			D		D	
Streaming audio via Bluetooth [®] wireless technology ⁴			N		N	N
MP3/WMA CD playback capability						
Radio Data System (RDS)						
Speed-sensitive volume control						
Illuminated steering wheel-mounted audio controls						

Safety/Security	S	FE+ [®] S	SV	FE+ [®] SV	SR	SL
Nissan Advanced Air Bag System with dual-stage supplemental front air bags with seat belt and occupant-classification sensors						
Driver and front-passenger seat-mounted side-impact supplemental air bags						
Roof-mounted curtain side-impact supplemental air bags for front and rear-seat outboard occupant head protection						
Vehicle Dynamic Control (VDC) with Traction Control System (TCS)						
3-point ALR/ELR passenger seat belt system (ELR for driver)						
Front seat belts with pretensioners and load limiters						
LATCH System (Lower Anchors and Tethers for CHildren)						
Child-safety rear door locks						
Zone Body construction with front and rear crumple zones						
Energy-absorbing steering column						
Pipe-style steel side-door guard beams						
Tire Pressure Monitoring System (TPMS)						
Tire Pressure Monitoring System (TPMS) with Easy-Fill Tire Alert			D		D	
Nissan Vehicle Immobilizer System						
Vehicle Security System						

PACKAGES

D SV/SR Driver Package

Rear disc brakes (SR only)
 Smart Auto Headlights
 Nissan Intelligent Key[®] with Push Button Ignition
 Bluetooth[®] Hands-free Phone System⁴
 AM/FM/CD audio system with 4.3" QVGA color monitor
 SiriusXM[®] Satellite Radio³
 USB connection port for iPod[®] interface and other compatible devices
 Leather-wrapped steering wheel and shift knob
 Sliding front armrest
 Tire Pressure Monitoring System (TPMS) with Easy-Fill Tire Alert

L Leather Package

Leather-appointed seats
 Heated front seats
 Rear disc brakes

N Navigation Package

NissanConnect[™] with Navigation System including 5.8" QVGA color touch-screen monitor and Voice Recognition for audio and navigation²
 NissanConnect[™] Apps²
 SiriusXM[®] Traffic and Travel Link^{®3}
 Streaming audio via Bluetooth[®] wireless technology⁴
 Hands-free text messaging assistant
 RearView Monitor

P Premium Package

Power sliding glass moonroof with tilt feature
 Auto-dimming rearview mirror with compass
 Sun visors with illuminated vanity mirrors and extensions
 Bose[®] Premium Audio System with AM/FM/CD
 Eight speakers, including two subwoofers

DIMENSIONS/CAPACITIES

Dimensions

Exterior – inches

Wheelbase	106.3
Overall length	182.1 (182.5 for SR)
Overall width	69.3
Overall height	58.9
Track width (front/rear)	60.2

Aerodynamics – Cd

	S	FE+ [®] S	SV	FE+ [®] SV	SR	SL
Drag coefficient	.29	.27	.29	.27	.29	.30

Interior (front/rear) – inches

Head room without moonroof	39.4/36.7
Head room with moonroof	38.5/36.7
Leg room	42.5/37.4
Hip room	50.9/50.1
Shoulder room	54.7/53.9

Capacities

Seating capacity	5
Interior passenger volume (cu. ft.)	95.9
Cargo capacity (cu. ft.)	15.1
Fuel tank (gals.)	13.2

¹CAL emissions (SULEV) equipment causes normal reductions in horsepower (from 130 hp to 124 hp) and torque (from 128 lb-ft to 125 lb-ft). SULEV vehicles are available in California and some northeastern states. S CVT, SV, SR and SL models only. ²Driving is serious business. Only use NissanConnect[™] services when safe to do so. Subscription Agreement required. Compatible smartphone required. Not all app features are available for all models. Some apps have late availability. May require dealer service visit or software upgrade to activate. Never program while driving. GPS mapping may not be detailed in all areas or reflect current road regulations. Cellular network not available in all areas. Cellular network, apps, and services, including Google[®] services, are provided by independent companies not within Nissan's control and may require subscription and owner consent to activate. Should provider terminate/restrict service, service may be terminated without notice or liability to Nissan and/or its agents. Nissan not responsible for any equipment or app replacement/upgrades, or associated costs, that may be required for continued operation. Terms and conditions of Subscription Agreement apply. 36-month trial period starts on vehicle sale date; subsequently a paid subscription is required at the then current rate (excludes Pandora[®]). Standard text rates and/or data usage may apply. See retailer and check www.NissanUSA.com/connect for details. ³Required SiriusXM[®] Satellite Radio, SiriusXM[®] Traffic and Travel Link[®] subscriptions sold separately after trial period. Installation costs, one-time activation fee, other fees and taxes will apply. SiriusXM[®] Traffic available in select markets. Services available only to those 18 or older in the 48 contiguous states and D.C. Fees and programming subject to change. Subscriptions governed by Customer Agreement available at siriusxm.com. ⁴Availability of specific features is dependent upon the phone's Bluetooth[®] support. Please refer to your phone Owner's Manual for details. ©2014 Sirius XM Radio Inc. Sirius, XM[®] and all related marks and logos are trademarks of Sirius XM Radio Inc. The Bluetooth[®] word mark and logos are owned by Bluetooth SIG, Inc. and any use of such marks by Nissan is under license. Bose[®] is a registered trademark of The Bose Corporation.

WEIGHTS/MPG

Curb Weights – Lbs.

Base total	S	FE+® S	SV	FE+® SV	SR	SL
Manual transmission	2,832	–	–	–	–	–
Xtronic CVT	2,835	2,836	2,847	2,848	2,857	2,862
Xtronic CVT (CA emission models)	2,838	–	2,850	–	2,861	2,866

2014 Sentra® S M/T, FE+® S, and FE+® SV models not available with California emissions.

2014 EPA Fuel Economy Estimates

City/Highway/Combined MPG

Manual transmission	27/36/30
Xtronic CVT	30/39/34
Xtronic CVT (CA emission models)	30/39/33
Xtronic CVT (FE+® models)	30/40/34

Actual mileage may vary with driving conditions – use for comparison purposes only. 2014 Sentra® S M/T, FE+® S, and FE+® SV models not available with California emissions.

BUYING/OWNING



Nissan Motor Acceptance Corporation. Whether you're buying or leasing, you'll find attractive rates and flexible terms to make your purchase more accessible.

College Grad Program. Ask about our special new vehicle pricing available to individuals up to two years after graduation.

Active and Reserve US Military Program. Ask about our fixed discount on new vehicle pricing available to those serving our country.

New Vehicle Limited Warranties. Protection for your new Nissan includes 3-year/36,000-mile (whichever occurs first) basic coverage and 5-year/60,000-mile (whichever occurs first) powertrain coverage. Terms, conditions, and exclusions apply. See Warranty Information Booklet for complete details.

Security+Plus® For additional peace of mind, a variety of extended service plans lets you tailor the coverage to your driving habits.

Maintenance+Plus® This extended plan ensures your Nissan will receive up to 17 different services and over 33 different inspection items at each visit, using the most up-to-date diagnostic equipment available.

Genuine Nissan Parts. When it comes time for service, any necessary replacement parts will be made using Genuine Nissan new or remanufactured parts, or Nissan-approved parts. And they're the only parts to carry Nissan's factory-backed limited warranty.

Nissan Mobility Assist. This program offers reimbursements toward the purchase and installation of certain mobility assistance products for program-eligible Nissans. Go to NissanUSA.com/mobility for more info.

Nissan's environmental action plan focuses on several key areas. Increasing production of Zero Emission vehicles, including the 100% electric LEAF.® Improving fuel efficiency through our PUREDRIVE™ measures. And reducing the environmental impact of manufacturing, as seen at our new, energy-efficient, low-emissions paint plant in Tennessee. For more information, log on to NissanUSA.com/green



At NissanUSA.com, you'll find virtual product demonstrations, a way to "build your own Nissan," a dealer locator, and more information about key Nissan support services. Or if you'd prefer, call **1-800-NISSAN-3** for answers to specific questions about Sentra® or any other Nissan vehicle. The Nissan names, logos, product names, feature names, and slogans are trademarks owned by or licensed to Nissan Motor Co. Ltd. and/or its North American subsidiaries. **Always wear your seat belt, and please don't drink and drive.** ©2014 Nissan North America, Inc.

This brochure is intended for general descriptive and informational purposes only. It is subject to change and does not constitute an offer, representation or warranty (express or implied) by Nissan North America, Inc. Interested parties should confirm the accuracy of any information in this brochure as it relates to a vehicle directly with Nissan North America, Inc., before relying on it to make a purchase decision. Nissan North America, Inc., reserves the right to make changes, at any time, without prior notice, in prices, colors, materials, equipment, specifications, and models and to discontinue models or equipment. Due to continuous product development and other pre- and post-production factors, actual vehicle, materials and specifications may vary from this brochure. Some vehicles shown with optional equipment. See the actual vehicle for complete accuracy. Availability and delivery times for particular models or equipment may vary. Specifications, options and accessories may differ in Hawaii, U.S. territories and other countries. For additional information on availability, options or accessories, see your Nissan dealer or contact Nissan North America, Inc.



Sign up for the latest news and updates on the 2014 Nissan Sentra.®

or visit NissanUSA.com/sentra

Los folletos de Nissan también están disponibles en español.

Para descargar el PDF, visita:

NissanUSA.com/folletos-espanol

And follow Nissan on:

