



Innovation that excites

2016 VERSA® NOTE®

Thumbs Off Your Phone While Driving!

Every year, too many people die because we can't put our phones down while driving. That's why Nissan is supporting the Red Thumb Movement as part of our ongoing commitment to help reduce fatalities on the road. So paint your thumbnail red as a reminder not to pick up your phone when you're behind the wheel. Find out more at NissanUSA.com/redthumb



LOOKING FOR MORE INFO?

Go to NissanUSA.com, where you'll find a complete interactive digital brochure for every vehicle in our lineup. You'll get the full product story, enhanced with interactive demos and videos, plus an easy-to-use guide to trim levels, colors, accessories, and more. Or get the Interactive Brochure Gallery App and enjoy it on your tablet.



Available on the App Store® and Google Play.®

Los folletos de Nissan también están disponibles en español. Para descargar el PDF, visita: NissanUSA.com/folletos-espanol

And follow Nissan on:



visit NissanUSA.com/versa-note

The App Store® logo is a registered trademark of Apple, Inc. All rights reserved. Facebook® is a registered trademark of Facebook, Inc. Google Play® is a registered trademark of Google, Inc. Twitter® is a registered trademark of Twitter, Inc. YouTube® is a registered trademark of Google Inc. This brochure is intended for general descriptive and informational purposes only. It is subject to change and does not constitute an offer, representation or warranty (express or implied) by Nissan North America, Inc. Interested parties should confirm the accuracy of any information in this brochure as it relates to a vehicle directly with Nissan North America, Inc., before relying on it to make a purchase decision. Nissan North America, Inc., reserves the right to make changes, at any time, without prior notice, in prices, colors, materials, equipment, specifications, and models and to discontinue models or equipment. Due to continuous product development and other pre- and post-production factors, actual vehicle, materials and specifications may vary from this brochure. Some vehicles shown with optional equipment. See the actual vehicle for complete accuracy. Availability and delivery times for particular models or equipment may vary. Specifications, options and accessories may differ in Hawaii, U.S. territories and other countries. For additional information on availability, options or accessories, see your Nissan dealer or contact Nissan North America, Inc. At NissanUSA.com, you'll find virtual product demonstrations, a way to "build your own Nissan," a dealer locator, and more information about key Nissan support services. Or if you'd prefer, call **1-800-NISSAN-3** for answers to specific questions about Versa® Note® or any other Nissan vehicle. The Nissan names, logos, product names, feature names, and slogans are trademarks owned by or licensed to Nissan Motor Co. Ltd. and/or its North American subsidiaries. Other trademarks and trade names are those of their respective owners. **Always wear your seat belt, and please don't drink and drive.** ©2015 Nissan North America, Inc.

PRINTED IN USA.



Innovation that excites



MAKE a break for it and go somewhere unique. Bring your friends along and all their gear – you've got the room. Forget the itinerary, play it by ear with directions and music you can change on-the-fly!¹ Pit stop: Catch that show downtown. Pull in to that tight spot, cameras all around your car make parking a piece of cake. The 2016 Nissan Versa® Note®. Enjoy **SOMETHING NEW.**



Nissan Versa® Note® SR shown in Metallic Blue with accessory Chrome Door Handle Accents.

¹Driving is serious business and requires your full attention. If you have to use the connected device while driving, exercise extreme caution at all times so full attention may be given to vehicle operation.

UP TO
40
MPG HIGHWAY¹

GO THE DISTANCE.

Wouldn't it be cool if you could get up to 40 MPG highway in a roomy, comfortable car that's lots of fun to drive? With Versa[®] Note,[®] you can. We got there by developing everything from exterior aerodynamics that whisper through the wind, to an advanced 1.6-liter 4-cylinder engine, to a virtually gearless Xtronic CVT[®] transmission that maximizes efficiency and performance.¹

Continuously Variable Transmission (CVT)

Aerodynamic design



TAKE THAT SPACE!

What if parallel parking was easier? A rearview camera is great when backing up – but when it comes to parking, it's nice to see more than just what's directly behind you. That's why Versa[®] Note[®] offers an Around View[®] Monitor.³ Four cameras give you a virtual 360° bird's-eye view of your vehicle, with selectable split-screen close-ups of the front, rear, and curbside views, so you can get a better look.⁴ Now that's smart.



ADAPT IN A SNAP.

When living in the moment is all part of the plan, Versa[®] Note[®] has your cargo needs covered with the super-versatile available Divide-N-Hide[®] Adjustable Floor.² Lower the floor to accommodate taller items or lift up the adjustable floor to find a convenient hiding place. Plus, the rear 60/40 split seats let you bring friends, and oversized items. Or fold down both sides to create a flat cargo area.



IT'S TIME FOR

SOMETHING NEW.

¹2016 EPA Fuel Economy Estimate 40 highway MPG for Versa[®] Note[®] with Xtronic CVT.[®] Actual mileage may vary with driving conditions – use for comparison only. ²Cargo and load capacity limited by weight and distribution. Always secure all cargo. ³Parking aid/convenience feature. Cannot completely eliminate blind spots. May not detect every object and does not warn of moving objects. Always check surroundings and turn to look behind you before moving vehicle. ⁴Virtual composite 360° view. ⁵Driving is serious business. Only use features when safe to do so. App availability is dependent upon vehicle model, trim level, packaging, and/or options. See NissanUSA.com/connect for complete app availability details. Never program while driving. GPS mapping may not be detailed in all areas or reflect current road status. Compatible smartphone required. Cellular network and GPS signals not available in all areas and/or at all times. Technology is evolving, and changes by independent companies are not within Nissan's control. Nissan is not responsible for associated costs that may be required for continued operation due to cellular network termination

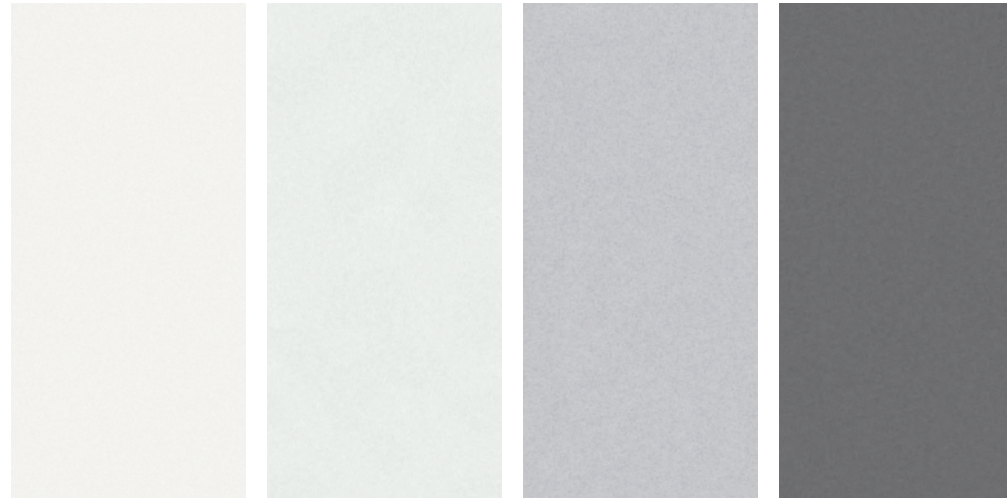
(including equipment upgrades, if available, or roaming charges on alternative networks) or other third party changes. Should a third party provider terminate/restrict service, service may be terminated without notice and with no liability to Nissan and its agents or affiliates. Subscription Agreement required and terms and conditions of Subscription Agreement apply. See NissanUSA.com/connect for details. Thirty-six (36) month trial period begins on your date of vehicle purchase or lease of a new Nissan; subsequently a paid subscription is required (excluding Pandora[®], if Pandora app via NissanConnect is equipped on vehicle) at the then current rate to continue to receive services. Text rates and/or data usage may apply. Facebook[®] is a registered trademark of Facebook, Inc. iHeartRadio[™] is a trademark of iHeart Media. iPod[®] is a registered trademark of Apple, Inc. All rights reserved. iPod[®] or other external device not included. Pandora[®] is a registered trademark of Pandora Media. Twitter[®] is a registered trademark of Twitter, Inc.

NissanConnectSM

STAY CONNECTED.

With available NissanConnectSM with Navigation and Mobile Apps, your Versa[®] Note[®] becomes your smartphone's best friend. Music, Facebook[®], navigation and more all come along for the ride, working seamlessly together through your smartphone and Versa[®] Note[®]'s color touch-screen.⁵

CHOOSE YOUR COLOR



Fresh Powder QM1

Aspen White¹ QAC

Brilliant Silver K23

Gun Metallic KAD

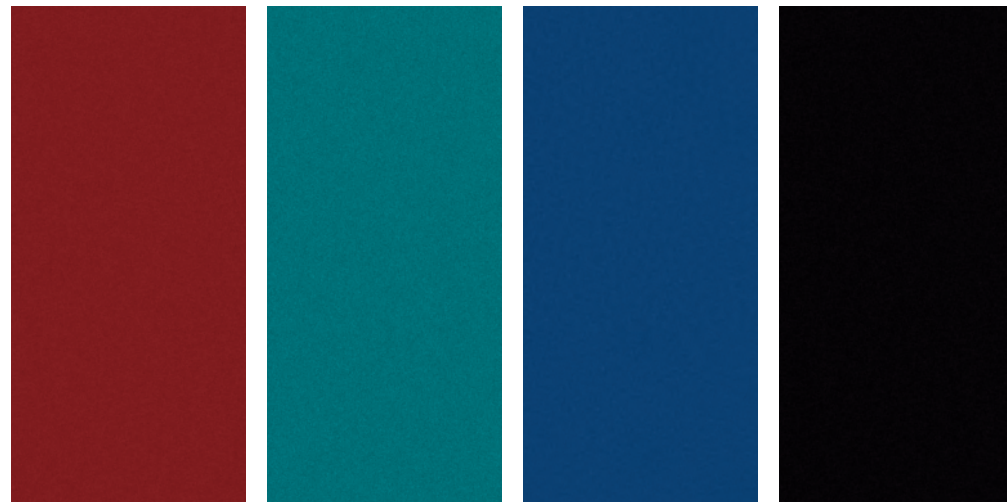
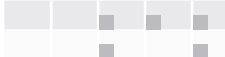
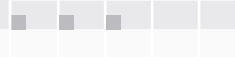
S PLUS SV SR SL

S PLUS SV SR SL

S PLUS SV SR SL

S PLUS SV SR SL

CHARCOAL CLOTH
WHEAT STONE CLOTH



Cayenne Red NAH

Metallic Peacock FAK

Metallic Blue B17

Super Black KH3

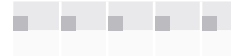
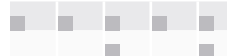
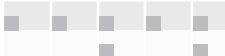
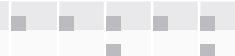
S PLUS SV SR SL

S PLUS SV SR SL

S PLUS SV SR SL

S PLUS SV SR SL

CHARCOAL CLOTH
WHEAT STONE CLOTH



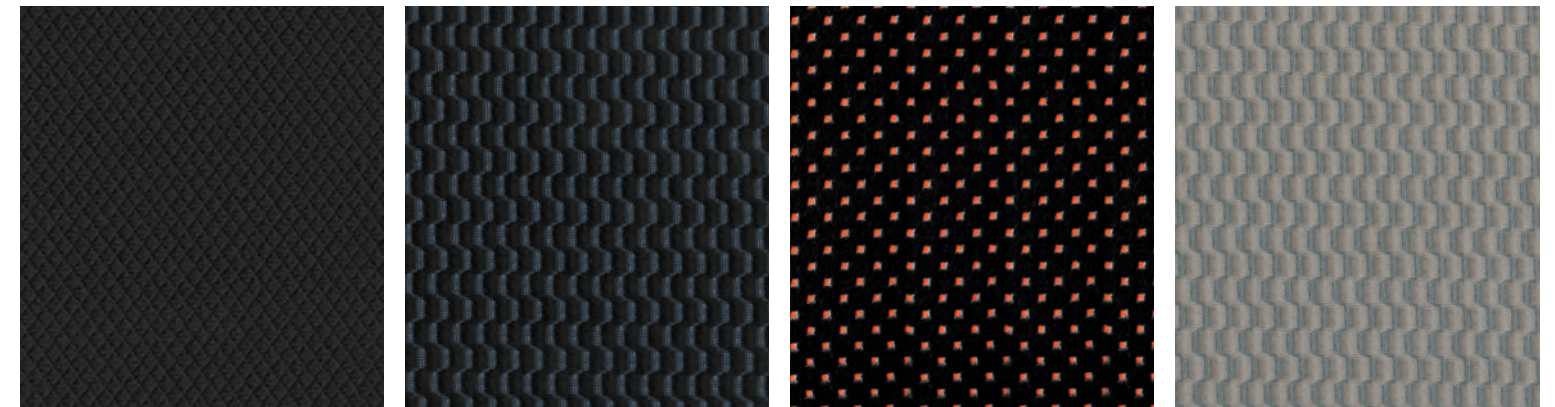
■ Standard
¹ Extra cost option

Nissan has taken care to ensure that the color swatches presented here are the closest possible representations of actual vehicle colors. Swatches may vary slightly due to the printing process and whether viewed in daylight, fluorescent or incandescent light. Please see the actual colors at your local Nissan dealer.

CHOOSE YOUR FABRIC



Versa® Note® SL shown in Wheat Stone Cloth.



Charcoal Cloth
S | S Plus

Charcoal Cloth
SV | SL

Charcoal Cloth
SR

Wheat Stone Cloth
SV | SL

CHOOSE YOUR TRIM LEVEL

S

- 1.6-liter 4-cylinder engine
- 5-speed manual transmission
- 15" x 5.5" steel wheels with wheel covers
- P185/65HR15 all-season low rolling resistance tires
- Dual power outside mirrors
- Bluetooth® Hands-free Phone System¹
- Air conditioning
- Fine Vision electroluminescent gauges
- Cup holders in center console
- Sun visors with extensions
- 60/40 Split fold-down rear seats
- AM/FM/CD audio system with auxiliary audio input jack²
- MP3/WMA CD playback capability
- Illuminated steering wheel-mounted audio controls
- 4-wheel Anti-lock Braking System (ABS)
- Vehicle Dynamic Control (VDC)³ with Traction Control System (TCS)
- Nissan Advanced Air Bag System⁴



S PLUS

INCLUDES S EQUIPMENT PLUS:

- Up to 40 MPG highway⁵
- Xtronic CVT® (Continuously Variable Transmission)
- Active grille shutter



SV

INCLUDES S PLUS EQUIPMENT PLUS:

- NissanConnectSM with Mobile Apps⁶
- Premium AM/FM/CD audio system with 5.0" color display
- RearView Monitor⁷
- Hands-free text messaging assistant⁸
- Streaming audio via Bluetooth® wireless technology¹
- SiriusXM® Satellite Radio⁹
- Upgraded Fine Vision electroluminescent gauges with trip computer and outside temperature display
- Integrated Key with remote keyless entry
- Power windows and door locks
- Cruise control
- USB connection port for iPod® interface and other compatible devices²
- Divide-N-Hide® Adjustable Floor
- Sun visors with vanity mirrors and extensions
- 6-way manual driver's seat with armrest and upgraded cloth seat and door trim
- Leather-wrapped steering wheel
- Piano black trim and silver accents on shift knob and shift surround
- Chrome inside door handles and chrome-accented vents



KEY AVAILABLE PACKAGE:

- Appearance Package

SR

INCLUDES SV EQUIPMENT PLUS:

- 16" x 6.0" 5-split spoke aluminum-alloy wheels
- P195/55HR16 all-season low rolling resistance tires
- Sport grille and smoked headlights
- Sport front and rear fascias with side sills
- Fog lights
- Dual power outside mirrors with LED turn signals
- Rear roof spoiler
- Suede-like seat fabric with color accents and stitching
- Leather-wrapped sport steering wheel
- Variable intermittent flat-blade windshield wipers
- Rear-seat fold-down center armrest with cup holders



KEY AVAILABLE PACKAGE:

- Technology Package

SL

INCLUDES SV EQUIPMENT PLUS:

- 16" x 6.0" aluminum-alloy wheels
- P195/55HR16 all-season low rolling resistance tires
- NissanConnectSM with Mobile Apps⁶
- Nissan Navigation System with 5.8" color touch-screen monitor and Voice Recognition for audio and navigation¹⁰
- SiriusXM® Traffic and Travel Link^{®9}
- Around View® Monitor⁷
- Nissan Intelligent Key® with Push Button Ignition
- Heated front seats
- Fog lights
- Dual power heated outside mirrors
- Variable intermittent flat-blade windshield wipers
- Rear-seat fold-down center armrest with cup holders
- Tire Pressure Monitoring System (TPMS) with Easy-Fill Tire Alert^{11, 12}



driving. GPS mapping may not be detailed in all areas or reflect current road status. Compatible smartphone required. Cellular network and GPS signals not available in all areas and/or at all times. Technology is evolving, and changes by independent companies are not within Nissan's control. Nissan is not responsible for associated costs that may be required for continued operation due to cellular network termination (including equipment upgrades, if available, or roaming charges on alternative networks) or other third party changes. Should a third party provider terminate/restrict service, service may be terminated without notice and with no liability to Nissan and its agents or affiliates. Subscription Agreement required and terms and conditions of Subscription Agreement apply. See NissanUSA.com/connect for details. Thirty-six (36) month trial period begins on your date of vehicle purchase or lease of a new Nissan; subsequently a paid subscription is required (excluding Pandora,® if Pandora® app via NissanConnect™ is equipped on vehicle) at the then current rate to continue to receive services. Text rates and/or data usage may apply. ⁷Parking aid/convenience feature. Cannot completely eliminate blind spots. May not detect every object and does not warn of moving objects. Always check surroundings and turn to look behind you before moving vehicle. ⁸Use the text messaging feature after stopping your vehicle in a safe location. If you have to use the feature while driving, exercise extreme caution at all times so full attention may be given to vehicle operation. Compatible smartphone required. Text rates and/or data usage may apply. ⁹Required monthly subscriptions sold separately for each available SiriusXM® feature after trial period, and are continuous until you call SiriusXM to cancel. Installation costs, one-time activation fee, other fees and taxes will apply. Each SiriusXM® feature availability is dependent upon vehicle trim level, packaging, and/or options, and may only be available in select markets. Satellite Radio U.S. service, NavWeather® service, and SiriusXM® Travel Link® services (if any of the foregoing features are equipped on vehicle) available only to those 18 or older in the 48 contiguous states and D.C. Fees and programming subject to change. Subscriptions governed by Customer Agreement available at siriusxm.com. ©2015 Sirius XM Radio Inc. Sirius® XM® and all related marks and logos are trademarks of Sirius XM Radio Inc. ¹⁰Never program while driving. GPS mapping may not be detailed in all areas or reflect current road status. ¹¹TPMS is not a substitute for regular tire pressure checks. ¹²Vehicle must be on for the Easy-Fill Tire Alert to operate. iPod® is a registered trademark of Apple, Inc. All rights reserved. iPod® or other external device not included. Facebook® is a registered trademark of Facebook, Inc. iHeartRadio™ is a trademark of iHeart Media. Pandora® is a registered trademark of Pandora Media. Twitter® is a registered trademark of Twitter, Inc.

Images may show additional available equipment. ¹Availability of specific features is dependent upon the phone's Bluetooth® support. Please refer to your phone Owner's Manual for details. Bluetooth® word mark and logos are owned by Bluetooth SIG, Inc., and any use of such marks by Nissan is under license. See www.NissanUSA.com/bluetooth for details. ²Driving is serious business and requires your full attention. If you have to use the connected device while driving, exercise extreme caution at all times so full attention may be given to vehicle operation. iPod® is a registered trademark of Apple, Inc. All rights reserved. iPod® or other external device not included. ³VDC, which should remain on when driving except when freeing the vehicle from mud or snow, cannot prevent accidents due to abrupt steering, carelessness, or dangerous driving techniques. ⁴Air bags are only a supplemental restraint system; always wear your seat belt. Even with the occupant-classification sensor, rear-facing child restraints should not be placed in the front-passenger's seat. All children 12 and under should ride in the rear seat properly secured in child restraints, booster seats, or seat belts according to their size. Air bags will only inflate in certain accidents; see your Owner's Manual for more details. ⁵2016 EPA Fuel Economy Estimate 40 highway MPG for Versa® Note® with Xtronic CVT.® Actual mileage may vary with driving conditions — use for comparison only. ⁶Driving is serious business. Only use features when safe to do so. App availability is dependent upon vehicle model, trim level, packaging, and/or options. See NissanUSA.com/connect for complete app availability details. Never program while

CHOOSE YOUR PACKAGE



SV | APPEARANCE PACKAGE

- 15" x 5.5" 6-split spoke aluminum-alloy wheels
- Variable intermittent windshield wipers
- Fog lights

CHOOSE YOUR ACCESSORY PACKAGE



SV | 15" ALUMINUM-ALLOY WHEELS

- 15" Aluminum-alloy wheels



SV | FOG LIGHTS PACKAGE

- Fog lights
- Variable intermittent windshield wipers



SR | TECH PACKAGE

- Nissan Navigation System with 5.8" color touch-screen monitor¹
- Voice Recognition for audio and navigation¹
- SiriusXM[®] Traffic and Travel Link^{®2}



SV | SPORT VALUE PACKAGE

- 15" Aluminum-alloy wheels
- Rear roof spoiler



SL | 16" SPORTY ALUMINUM-ALLOY WHEELS

- 16" Sporty aluminum-alloy wheels

Images may show additional available equipment. ¹Never program while driving. GPS mapping may not be detailed in all areas or reflect current road status. ²Required monthly subscriptions sold separately for each available SiriusXM[®] feature after trial period, and are continuous until you call SiriusXM to cancel. Installation costs, one-time activation fee, other fees and taxes will apply. Each SiriusXM[®] feature availability is dependent upon vehicle trim level, packaging, and/or options, and may only be available in select markets. Satellite Radio U.S. service, NavWeather[®] service, and SiriusXM[®] Travel Link[®] services (if any of

the foregoing features are equipped on vehicle) available only to those 18 or older in the 48 contiguous states and D.C. Fees and programming subject to change. Subscriptions governed by Customer Agreement available at siriusxm.com. ©2015 Sirius XM Radio Inc. Sirius,[®] XM[®] and all related marks and logos are trademarks of Sirius XM Radio Inc.

CHOOSE YOUR ACCESSORIES



TURN BRAND-NEW INTO ALL YOU.

Every Genuine Nissan Accessory is custom-fit, custom-designed and durability-tested. Each one is backed by Nissan's 3-year/36,000-mile (whichever occurs first) limited warranty (if installed by dealer at the time of purchase),¹ and can be financed when installed by dealer at time of purchase.

- A. **Interior Accent Lighting**
Bring a bit of the club along for the drive.
- B. **Rear Roof Spoiler**
Go ahead, spoil yourself.
- C. **Illuminated Kick Plates**
Let your door sills play dress up.
- D. **15" Aluminum-alloy Wheels**
Attitude comes standard.
- E. **Chrome Exhaust Finisher**
Finish with a sleek touch.
- F. **Rear Bumper Protector**
Keeps you from getting nasty scrapes.
- G. **All-season Floor Mats**
Bring on the weather.
- H. **Rear Cargo Cover and Carpeted Cargo Mat (sold separately)²**
Think of them as a secret fortress for your cargo.

Additional Accessories:

- Chrome Rear Hatch Accent
- Interior Trim Appliqués
- Divide-N-Hide® Adjustable Floor²
- Carpeted Floor Mats
- And More

¹Genuine Nissan Accessories are covered by Nissan's Limited Warranty on Genuine Nissan Replacement Parts, Genuine NISMO® S-Tune Parts, and Genuine Nissan Accessories for the longer of 12 months/12,000 miles (whichever occurs first) or the remaining period under the 3-year/36,000-mile (whichever occurs first) Nissan New Vehicle Limited Warranty. Terms and conditions apply. See Warranty Information Booklet for details. ²Cargo and load capacity limited by weight and distribution. Always secure all cargo.

GENUINE NISSAN ACCESSORIES.

For more information and to shop online for Versa® Note® Genuine Nissan Accessories, go to bit.ly/16versanote-estore



To see Genuine Nissan Accessories in action, go to bit.ly/versanoteaccessories

Nissan Versa® Note® SL shown in Metallic Peacock with 16" Sporty Aluminum-alloy Wheels, Rear Roof Spoiler, Splash Guards, Chrome Door Handle Accents and Fog Lights (standard on SR and SL trims).

SPECIFICATIONS

Engine	S	S Plus	SV	SR	SL
HR16DE – 1.6-liter DOHC 16-valve 4-cylinder engine	■	■	■	■	■
Horsepower – 109 hp @ 6,000 rpm					
Torque – 107 lb-ft @ 4,400 rpm					
Emissions – Tier 2-Bin 5 (EPA); LEV2-ULEV (CARB)	■	■	■	■	■
Dual injector system	■	■	■	■	■
Continuously Variable Valve Timing Control System (CVTCS) on intake and exhaust valves	■	■	■	■	■
Nissan Direct Ignition System	■	■	■	■	■
Platinum-tipped spark plugs	■	■	■	■	■
Electronic drive-by-wire throttle	■	■	■	■	■

Drivetrain	S	S Plus	SV	SR	SL
Front engine/Front-Wheel Drive	■	■	■	■	■
5-speed manual transmission	■	■	■	■	■
Xtronic CVT [®] (Continuously Variable Transmission)	■	■	■	■	■

Brakes	S	S Plus	SV	SR	SL
Vented front disc/rear drum brakes	■	■	■	■	■
4-wheel Anti-lock Braking System (ABS)	■	■	■	■	■
Electronic Brake force Distribution (EBD)	■	■	■	■	■
Brake Assist	■	■	■	■	■

Suspension/Steering	S	S Plus	SV	SR	SL
Independent strut front suspension with stabilizer bar	■	■	■	■	■
Torsion beam rear axle with integrated stabilizer bar	■	■	■	■	■
Vehicle-speed-sensitive electric power steering	■	■	■	■	■

Wheels/Tires	S	S Plus	SV	SR	SL
15" x 5.5" Steel wheels with wheel covers	■	■	■	■	■
15" x 5.5" 5-split spoke aluminum-alloy wheels			■	■	■
16" x 6.0" Aluminum-alloy wheels			■	■	■
16" x 6.0" Aluminum-alloy wheels			■	■	■
16" x 6.0" Sporty aluminum-alloy wheels			■	■	■
P185/65HR15 All-season low rolling resistance tires	■	■	■	■	■
P195/55HR16 All-season low rolling resistance tires	■	■	■	■	■

Exterior Features	S	S Plus	SV	SR	SL
Multi-reflector halogen headlights	■	■	■	■	■
Sport grille and smoked headlights			■	■	■
Aerodynamic taillights	■	■	■	■	■
Sport front and rear fascias with side sills and rear roof spoiler			■	■	■
Fog lights			■	■	■
Dual power outside mirrors	■	■	■	■	■
Dual power outside mirrors with LED turn signals			■	■	■
Dual power heated outside mirrors			■	■	■
Active grille shutter		■	■	■	■
Rear roof spoiler	■	■	■	■	■
Splash guards	■	■	■	■	■
Rear bumper protector	■	■	■	■	■
Stainless steel exhaust finisher	■	■	■	■	■
Chrome rear hatch accent	■	■	■	■	■
Chrome door handle accents	■	■	■	■	■

■ Standard ■ Accessory ■ Part of Fog Lights Package ■ Part of Sport Value Package ■ Part of Interior Illumination Package
 □ Optional ■ Part of SR Tech Package ■ Part of Chrome Package

Comfort/Convenience	S	S Plus	SV	SR	SL
Nissan Navigation System with 5.8" color touch-screen monitor and Voice Recognition for audio and navigation				■	■
SiriusXM [®] Traffic and Travel Link ^{®1}				■	■
NissanConnect SM with Mobile Apps ²			■	■	■
Hands-free text messaging assistant ³			■	■	■
RearView Monitor			■	■	■
Around View [®] Monitor			■	■	■
Bluetooth [®] Hands-free Phone System ⁴	■	■	■	■	■
Fine Vision electroluminescent gauges with trip computer	■	■	■	■	■
Upgraded Fine Vision electroluminescent gauges with trip computer and outside temperature display			■	■	■
Air conditioning	■	■	■	■	■
Integrated Key with remote keyless entry			■	■	■
Nissan Intelligent Key [®] with Push Button Ignition			■	■	■
Power door locks with auto-locking feature			■	■	■
Power windows with driver's one-touch auto-down feature			■	■	■
Tilt steering column	■	■	■	■	■
Cruise control			■	■	■
Variable intermittent flat-blade windshield wipers			■	■	■
Intermittent rear window wiper	■	■	■	■	■
Rear window defroster	■	■	■	■	■
Front map light	■	■	■	■	■
Cargo area light	■	■	■	■	■
Front door map pockets with bottle holders	■	■	■	■	■
Front cup holders in center console	■	■	■	■	■
Rear cup holders in center console	■	■	■	■	■
Rear cup holders in rear-seat center armrest			■	■	■
Front passenger seatback map pocket	■	■	■	■	■
Divide-N-Hide [®] Adjustable Floor			■	■	■
Rear cargo cover	■	■	■	■	■
Sun visors with extensions	■	■	■	■	■
Sun visors with vanity mirrors and extensions			■	■	■
Auto-dimming inside rearview mirror with HomeLink [®] Universal Transceiver and digital compass	■	■	■	■	■
Digital clock	■	■	■	■	■
Auxiliary 12-volt DC power outlet	■	■	■	■	■
Battery saver	■	■	■	■	■

Seating/Appointments	S	S Plus	SV	SR	SL
4-way manual driver's seat	■	■	■	■	■
6-way manual driver's seat			■	■	■
Driver's seat armrest			■	■	■
Heated front seats			■	■	■
60/40 Split fold-down rear seats	■	■	■	■	■
Cloth seat trim	■	■	■	■	■
Upgraded cloth seat trim			■	■	■
Suede-like seat fabric with color accents and stitching			■	■	■
Carpeted floor mats	■	■	■	■	■
Carpeted cargo mat	■	■	■	■	■

■ Part of Sport Value Package ■ Part of Interior Illumination Package ■ Part of SV Appearance Package

Seating/Appointments (continued)	S	S Plus	SV	SR	SL
Cloth door trim accent			■	■	■
Interior trim appliques			■	■	■
Leather-wrapped steering wheel			■	■	■
Leather-wrapped sport steering wheel			■	■	■
Piano black trim			■	■	■
Silver accents on dash and vent rings	■	■	■	■	■
Silver accents on shift knob and shifter surround			■	■	■
Chrome inside door handles and chrome-accented center vents			■	■	■
Printed non-woven fabric headliner			■	■	■
Illuminated kick plates	■	■	■	■	■
Interior accent lighting	■	■	■	■	■

Audio/Entertainment	S	S Plus	SV	SR	SL
AM/FM/CD audio system with four speakers	■	■	■	■	■
Premium AM/FM/CD audio system with four speakers and 5" color display			■	■	■
SiriusXM [®] Satellite Radio ¹			■	■	■
Streaming audio via Bluetooth [®] wireless technology ⁴			■	■	■
MP3/WMA CD playback capability	■	■	■	■	■
Auxiliary audio input jack	■	■	■	■	■
USB connection port for iPod [®] interface and other compatible devices ⁵			■	■	■
Radio Data System (RDS)	■	■	■	■	■
Speed-sensitive volume control	■	■	■	■	■
Illuminated steering wheel-mounted audio controls	■	■	■	■	■

Safety/Security	S	S Plus	SV	SR	SL
Nissan Advanced Air Bag System with dual-stage supplemental front air bags with seat-belt and occupant-classification sensors	■	■	■	■	■
Driver and front-passenger seat-mounted side-impact supplemental air bags	■	■	■	■	■
Roof-mounted curtain side-impact supplemental air bags for front- and rear-seat outboard occupant head protection	■	■	■	■	■
Vehicle Dynamic Control (VDC) with Traction Control System (TCS)	■	■	■	■	■
3-point ALR/ELR passenger seat belt system (ELR for driver)	■	■	■	■	■
Height-adjustable front head restraints	■	■	■	■	■
Rear outboard head restraints	■	■	■	■	■
LATCH System (Lower Anchors and Tethers for Children)	■	■	■	■	■

¹Required monthly subscriptions sold separately for each available SiriusXM[®] feature after trial period, and are continuous until you call SiriusXM[®] to cancel. Installation costs, one-time activation fee, other fees and taxes will apply. Each SiriusXM[®] feature availability is dependent upon vehicle trim level, packaging, and/or options, and may only be available in select markets. Satellite Radio U.S. service, NavWeather[®] service, and SiriusXM[®] Travel Link[®] services (if any of the foregoing features are equipped on vehicle) available only to those 18 or older in the 48 contiguous states and D.C. Fees and programming subject to change. Subscriptions governed by Customer Agreement available at siriusxm.com. ©2015 Sirius XM Radio Inc. Sirius[®] XM[®] and all related marks and logos are trademarks of Sirius XM Radio Inc. ²Driving is serious business. Only use features when safe to do so. App availability is dependent upon vehicle model, trim level, packaging, and/or options. See NissanUSA.com/connect for complete app availability details. Never program while driving. GPS mapping may not be detailed in all areas or reflect current road status. Compatible smartphone required. Technology is evolving, and changes by independent companies are not within Nissan's control. Nissan is not responsible for associated costs that may be required for continued operation due to cellular network termination (including equipment upgrades, if available, or roaming charges on alternative networks) or other third party changes. Should a third party provider terminate/

Safety/Security (continued)	S	S Plus	SV	SR	SL
Zone Body construction with front and rear crumple zones	■	■	■	■	■
Pipe-style steel side-door guard beams	■	■	■	■	■
Tire Pressure Monitoring System (TPMS)	■	■	■	■	■
Tire Pressure Monitoring System (TPMS) with Easy-Fill Tire Alert					■
Nissan Vehicle Immobilizer System					■

DIMENSIONS/CAPACITIES/WEIGHTS/MPG

Dimensions – Inches					
Exterior					
Wheelbase			102.4		
Overall length			163.7		
Overall width			66.7		
Overall height			60.5		
Track width (front/rear)			58.3/58.5		

Aerodynamics - Cd	S	S Plus	SV	SR	SL
Drag coefficient	0.308	0.298	0.298	0.300	0.298

Interior (front/rear)			
Head room	40.8/38.0	Hip room	48.5/48.8
Leg room	41.3/38.3	Shoulder room	51.7/51.9

Capacities	
Seating capacity	5
Interior passenger volume (cu. ft.)	94.1
Cargo volume with rear seats up (cu. ft.)	18.8
Cargo volume with rear seats down (cu. ft.)	38.3
Fuel tank (gals.)	10.8

Curb Weights – Lbs.					
	S	S Plus	SV	SR	SL
Manual transmission	2,414	–	–	–	–
Xtronic CVT [®]	–	2,460	2,485	2,523	2,521

2016 EPA Fuel Economy Estimates					
	S	S Plus	SV	SR	SL
Manual transmission	27/30/36	–	–	–	–
Xtronic CVT [®]	–	31/35/40	31/35/40	31/35/40	31/35/40

– Actual mileage may vary with driving conditions – use for comparison only.

restrict service, service may be terminated without notice and with no liability to Nissan and its agents or affiliates. Subscription Agreement required and terms and conditions of Subscription Agreement apply. See NissanUSA.com/connect for details. Thirty-six (36) month trial period begins on your date of vehicle purchase or lease of a new Nissan; subsequently a paid subscription is required (excluding Pandora[®] if Pandora app via NissanConnect is equipped on vehicle) at the then current rate to continue to receive services. Text rates and/or data usage may apply. ³Use the text messaging feature after stopping your vehicle in a safe location. If you have to use the feature while driving, exercise extreme caution at all times so full attention may be given to vehicle operation. Compatible smartphone required. Text rates and/or data usage may apply. ⁴Availability of specific features is dependent upon the phone's Bluetooth[®] support. Please refer to your phone Owner's Manual for details. Bluetooth[®] word mark and logos are owned by Bluetooth SIG, Inc., and any use of such marks by Nissan is under license. See NissanUSA.com/bluetooth for details. ⁵Driving is serious business and requires your full attention. If you have to use the connected device while driving, exercise extreme caution at all times so full attention may be given to vehicle operation. iPod[®] is a registered trademark of Apple, Inc. All rights reserved. iPod[®] or other external device not included. HomeLink[®] is a registered trademark of Gentex Corporation.