



Innovation that excites

2016 VERSA® SEDAN

Thumbs Off Your Phone While Driving!

Every year, too many people die because we can't put our phones down while driving. That's why Nissan is supporting the Red Thumb Movement as part of our ongoing commitment to help reduce fatalities on the road. So paint your thumbnail red as a reminder not to pick up your phone when you're behind the wheel. Find out more at NissanUSA.com/redthumb



LOOKING FOR MORE INFO?

Go to NissanUSA.com, where you'll find a complete interactive digital brochure for every vehicle in our lineup. You'll get the full product story, enhanced with interactive demos and videos, plus an easy-to-use guide to trim levels, colors, accessories, and more. Or get the Interactive Brochure Hub and enjoy it on your tablet.



Available on the App Store® and Google Play.®

Los folletos de Nissan también están disponibles en español. Para descargar el PDF, visita: NissanUSA.com/folletos-espanol

And follow Nissan on:



visit NissanUSA.com/versa-sedan



Innovation that excites

The App Store® logo is a registered trademark of Apple, Inc. All rights reserved. Facebook® is a registered trademark of Facebook, Inc. Google Play® is a registered trademark of Google, Inc. Twitter® is a registered trademark of Twitter, Inc. YouTube® is a registered trademark of Google, Inc. This brochure is intended for general descriptive and informational purposes only. It is subject to change and does not constitute an offer, representation or warranty (express or implied) by Nissan North America, Inc. Interested parties should confirm the accuracy of any information in this brochure as it relates to a vehicle directly with Nissan North America, Inc., before relying on it to make a purchase decision. Nissan North America, Inc., reserves the right to make changes, at any time, without prior notice, in prices, colors, materials, equipment, specifications, and models and to discontinue models or equipment. Due to continuous product development and other pre- and post-production factors, actual vehicle, materials and specifications may vary from this brochure. Some vehicles shown with optional equipment. See the actual vehicle for complete accuracy. Availability and delivery times for particular models or equipment may vary. Specifications, options and accessories may differ in Hawaii, U.S. territories and other countries. For additional information on availability, options or accessories, see your Nissan dealer or contact Nissan North America, Inc. At NissanUSA.com, you'll find virtual product demonstrations, a way to "build your own Nissan," a dealer locator, and more information about key Nissan support services. Or if you'd prefer, call 1-800-NISSAN-3 for answers to specific questions about Versa® Sedan or any other Nissan vehicle. The Nissan names, logos, product names, feature names, and slogans are trademarks owned by or licensed to Nissan Motor Co. Ltd. and/or its North American subsidiaries. Other trademarks and trade names are those of their respective owners. **Always wear your seat belt, and please don't drink and drive.** ©2015 Nissan North America, Inc.

PRINTED IN USA.



EMBRACE how good this looks. Push through the streets with modern aerodynamic lines and efficiency that impress inside and out. Pump some music through the spacious interior at the tap of your phone.¹ Take a moment. Soak it all in – it's pretty awesome. Move forward with available advanced technologies that keep you up to date and on the right path. The 2016 Nissan Versa[®] Sedan. Revel in the **CHANGE.**

¹Driving is serious business and requires your full attention. If you have to use the connected device while driving, exercise extreme caution at all times so full attention may be given to vehicle operation.

UP TO
40
MPG HIGHWAY¹

GO THE DISTANCE.

Wouldn't it be cool if you could get excellent fuel economy in a roomy, comfortable car that's lots of fun to drive?¹ With Versa[®] Sedan, we got there by developing everything from exterior aerodynamics that whisper through the wind to an advanced 1.6-liter 4-cylinder engine to a virtually gearless Xtronic CVT[®] transmission that maximizes efficiency and performance.



JUMP IN AND GO.

No more fumbling for a key. An available Intelligent Key opens your Versa[®] Sedan without ever leaving your pocket or purse. And once you're in, an available Push Button Ignition starts your engine with a single touch.

RAISE YOUR EXPECTATIONS.



NissanConnect^{SM2}

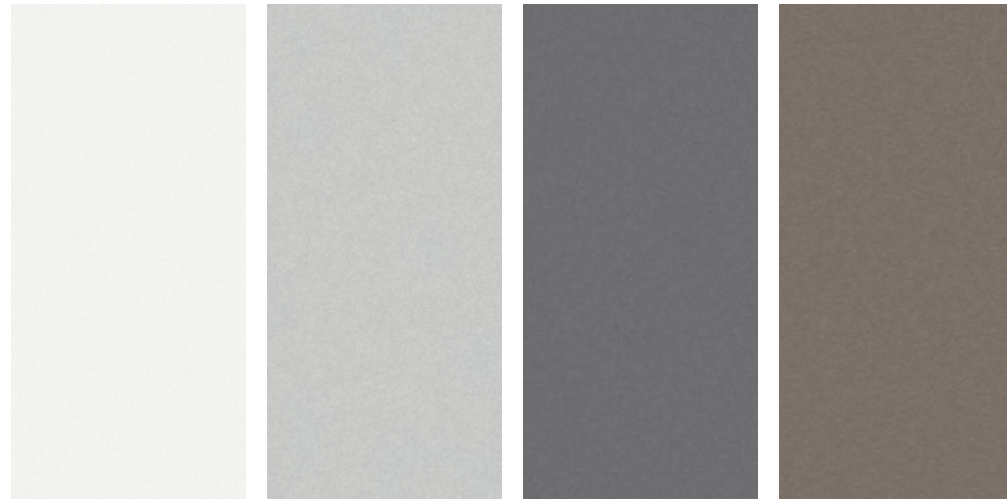
STAY CONNECTED.

With available NissanConnectSM with Navigation and Mobile Apps, your Versa[®] becomes your smartphone's best friend. Music, Facebook,[®] navigation and more all come along for the ride, working seamlessly together through your smartphone and Versa[®]'s color touch-screen.²

¹2016 EPA Fuel Economy Estimates 31 city/40 highway MPG for Versa[®] Sedan 1.6-L with CVT. Actual mileage may vary with driving conditions — use for comparison only. ²Driving is serious business. Only use features when safe to do so. App availability is dependent upon vehicle model, trim level, packaging, and/or options. See NissanUSA.com/connect for complete app availability details. Never program while driving. GPS mapping may not be detailed in all areas or reflect current road status. Compatible smartphone required. Technology is evolving, and changes by independent companies are not within Nissan's control. Nissan is not responsible for associated costs that may be required for continued operation due to cellular network termination (including equipment upgrades, if available, or roaming charges on alternative networks) or other third party changes. Should a third party provider terminate/restrict service, service may be terminated without notice and with no liability to Nissan and its agents or affiliates. Subscription

Agreement required and terms and conditions of Subscription Agreement apply. See NissanUSA.com/connect for details. Thirty-six (36) month trial period begins on your date of vehicle purchase or lease of a new Nissan; subsequently a paid subscription is required (excluding Pandora[®] if Pandora app via NissanConnectSM is equipped on vehicle) at the then current rate to continue to receive services. Text rates and/or data usage may apply. Facebook[®] is a registered trademark of Facebook, Inc. Google[®] is a registered trademark of Google, Inc. iHeartRadio[™] is a trademark of iHeart Media, Inc. Pandora[®] is a registered trademark of Pandora Media, Inc. The Sirius[®], XM[®], and SiriusXM[®] names and all related marks and logos are trademarks of Sirius XM Radio, Inc.

CHOOSE YOUR COLOR



Fresh Powder QM1

Brilliant Silver K23

Gun Metallic KAD

Titanium KAC

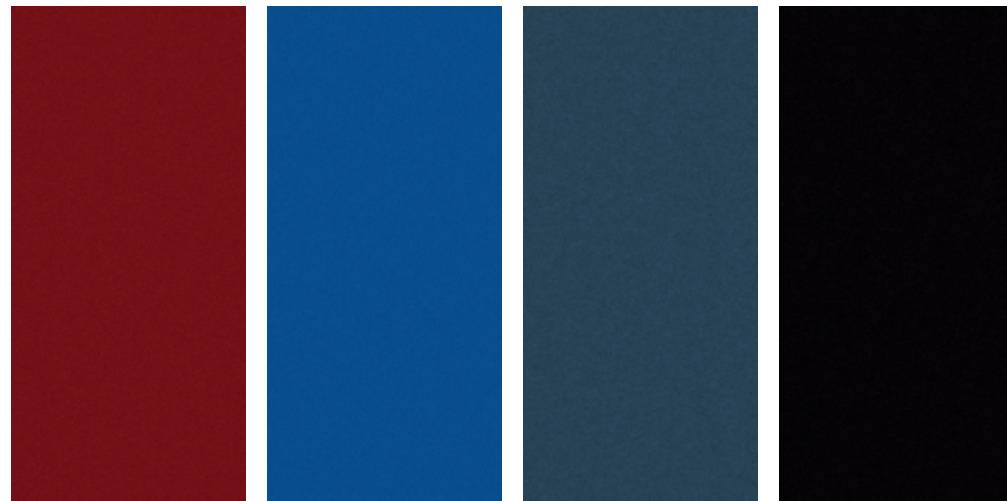
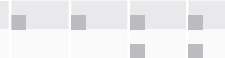
S PLUS SV SL

S PLUS SV SL

S PLUS SV SL

S PLUS SV SL

CHARCOAL CLOTH
SANDSTONE CLOTH



Cayenne Red NAH

Metallic Blue B17

Graphite Blue RAQ

Super Black KH3

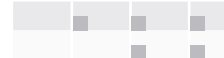
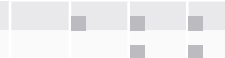
S PLUS SV SL

S PLUS SV SL

S PLUS SV SL

S PLUS SV SL

CHARCOAL CLOTH
SANDSTONE CLOTH



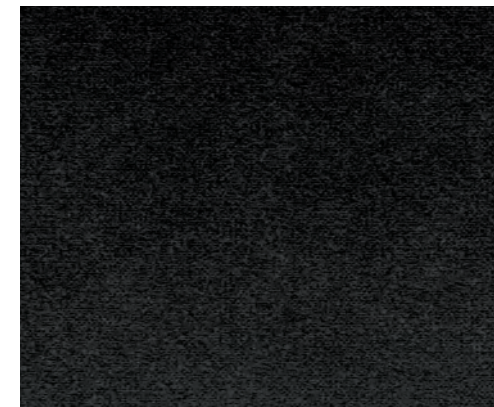
■ Standard

Nissan has taken care to ensure that the color swatches presented here are the closest possible representations of actual vehicle colors. Swatches may vary slightly due to the printing process and whether viewed in daylight, fluorescent or incandescent light. Please see the actual colors at your local Nissan dealer.

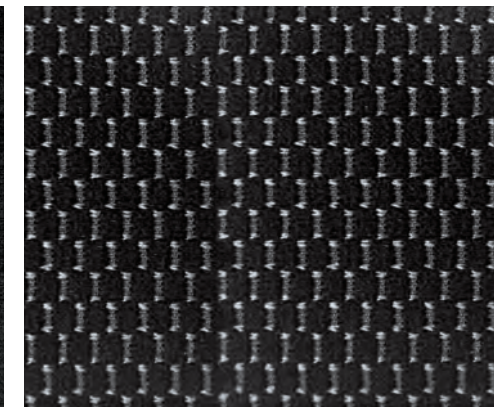
CHOOSE YOUR FABRIC



Nissan Versa® Sedan SL shown in Charcoal Cloth.



Charcoal Cloth
S | S Plus



Charcoal Cloth
SV | SL



Sandstone Cloth
SV | SL



Nissan Versa® Sedan SL shown in Sandstone Cloth.

CHOOSE YOUR TRIM LEVEL

S

- 1.6-liter DOHC 4-cylinder engine
- 5-speed manual transmission or 4-speed automatic transmission
- 15" x 5.5" steel wheels with wheel covers
- P185/65HR15 all-season low rolling resistance tires
- Chrome-accented grille
- Front tire and center fascia air deflectors
- Dual power body-color remote-controlled outside mirrors
- AM/FM/CD audio system with auxiliary audio input jack¹
- Bluetooth® Hands-free Phone System²
- Four speakers
- Illuminated steering wheel-mounted audio controls
- Silver accents on steering wheel
- Trip computer
- Air conditioning
- Sun visors with extension
- Driver's and passenger's visor vanity mirrors
- Foldable assist grips
- Six standard air bags
- Anti-lock Braking System with Electronic Brake force Distribution and Brake Assist
- Vehicle Dynamic Control (VDC) with Traction Control System (TCS)



SV

INCLUDES S PLUS EQUIPMENT PLUS:

- Chrome outside door handles
- Integrated Key with remote keyless entry
- Remote trunk release
- Power door locks with auto-locking features
- Power windows with driver's one-touch auto-down feature
- Fine Vision electroluminescent gauges
- Outside temperature display
- Upgraded AM/FM/CD audio system
- USB connection port for iPod® interface and other compatible devices¹
- 6-way manual driver's seat
- Driver's seat armrest
- Passenger seatback pocket
- Upgraded cloth seat trim
- 60/40 Split fold-down rear seats
- Cloth door trim accent
- Silver accents on dash, vent rings, shift knob and shifter surround
- Chrome inside door handles and chrome-accented center vents
- Front map light with key-linked illuminated entry

KEY AVAILABLE PACKAGES:

- Appearance Package, Tech Package



S PLUS

INCLUDES S EQUIPMENT PLUS:

- Up to 40 MPG highway³
- Standard Xtronic CVT® (Continuously Variable Transmission)
- Rear tire air deflectors
- Rear spoiler with integrated LED brake light
- Cruise control



SL

INCLUDES SV EQUIPMENT PLUS:

- 16" x 6.0" 8-spoke aluminum-alloy wheels
- P195/55HR16 all-season low rolling resistance tires
- Fog lights
- Dual power body-color outside mirrors with integrated turn signals
- Nissan Intelligent Key® with Push Button Ignition
- NissanConnectSM with Navigation and Mobile Apps, including 5.8" color touch-screen monitor⁴
- Nissan Voice Recognition for audio and navigation
- SiriusXM® Traffic and Travel Link®⁵
- Hands-free text messaging assistant⁶
- Streaming audio via Bluetooth® wireless technology²
- SiriusXM® Satellite Radio⁵
- Variable intermittent windshield wipers
- RearView Monitor
- Leather-wrapped steering wheel
- Tire Pressure Monitoring System (TPMS) with Easy-Fill Tire Alert
- Nissan Vehicle Immobilizer System



Images may show additional available equipment. ¹Driving is serious business and requires your full attention. If you have to use the connected device while driving, exercise extreme caution at all times so full attention may be given to vehicle operation. iPod® is a registered trademark of Apple, Inc. All rights reserved. iPod® or other external device not included. ²Availability of specific features is dependent upon the phone's Bluetooth® support. Please refer to your phone Owner's Manual for details. The Bluetooth® word mark and logos are owned by Bluetooth SIG, Inc., and any use of such marks by Nissan is under license. See NissanUSA.com/bluetooth for details. ³2016 EPA Fuel Economy Estimates 31 city/40 highway MPG for Versa® Sedan 1.6-L with CVT. Actual mileage may vary with driving conditions – use for comparison only. ⁴Driving is serious business. Only use features when safe to do so. App availability is dependent upon vehicle model, trim level, packaging, and/or options. See NissanUSA.com/connect for complete app availability details. Never program while driving. GPS mapping may not be detailed in all areas or reflect current road status. Compatible smartphone required. Technology is evolving, and changes by independent companies are not within Nissan's control. Nissan is not responsible for associated costs that may be required for continued operation due to cellular network termination (including equipment upgrades, if available, or roaming charges on alternative networks) or other third party changes. Should a third party provider terminate/restrict service, service may be terminated without notice and with no liability to Nissan and its

agents or affiliates. Subscription Agreement required and terms and conditions of Subscription Agreement apply. See NissanUSA.com/connect for details. Thirty-six (36) month trial period begins on your date of vehicle purchase or lease of a new Nissan; subsequently a paid subscription is required (excluding Pandora® if Pandora app via NissanConnect is equipped on vehicle) at the then current rate to continue to receive services. Text rates and/or data usage may apply. ⁵Required monthly subscriptions sold separately for each available SiriusXM feature after trial period, and are continuous until you call SiriusXM to cancel. Installation costs, one-time activation fee, other fees and taxes will apply. Each SiriusXM feature availability is dependent upon vehicle model, trim level, packaging, and/or options, and may only be available in select markets. Satellite Radio U.S. service, NavWeather® service, and SiriusXM Travel Link® services (if any of the foregoing features are equipped on vehicle) available only to those 18 or older in the 48 contiguous states and D.C. Fees and programming subject to change. Subscriptions governed by Customer Agreement available at siriusxm.com. ©2015 Sirius XM Radio Inc. Sirius, XM® and all related marks and logos are trademarks of Sirius XM Radio Inc. ⁶Use the text messaging feature after stopping your vehicle in a safe location. If you have to use the feature while driving, exercise extreme caution at all times so full attention may be given to vehicle operation. Compatible smartphone required. Text rates and/or data usage may apply.

CHOOSE YOUR ACCESSORIES



TURN BRAND-NEW INTO ALL YOU.

Every Genuine Nissan Accessory is custom-fit, custom-designed and durability-tested. Each one is backed by Nissan's 3-year/36,000-mile (whichever occurs first) limited warranty (if installed by dealer at the time of purchase)¹ and can be financed when installed by dealer at time of purchase.

- A. **Interior Accent Lighting**
Bring the party to your drive.
- B. **Chrome Door Handle Accents**
Super-slick and oh, so shiny!
- C. **Rear Decklid Spoiler and Chrome Trunk Accent**
Spoil yourself in style (sold separately).
- D. **Interior Trim Appliqués**
It's all about the details (Shown in Dark version. Also available in Light version).
- E. **15" Aluminum-alloy Wheels**
Knock the style up a notch.
- F. **Illuminated Kick Plates**
Fewer scuffs and a grand entry, every time.
- G. **Carpeted Trunk Mat²**
Because being a trunk isn't easy.
- H. **Auto-dimming Rearview Mirror with HomeLink[®] and Compass**
Perfect for dim bulbs driving with their brights on.

Additional Accessories:

- Side-window deflectors
- Nissan VTRS (Vehicle Tracking and Recovery System)³
- Portable Cargo Organizer
- Carpeted Floor Mats
- All-season Floor Mats
- And More

¹Genuine Nissan Accessories are covered by Nissan's Limited Warranty on Genuine Nissan Replacement Parts, Genuine NISMO[®] S-Tune Parts, and Genuine Nissan Accessories for the longer of 12 months/12,000 miles (whichever occurs first) or the remaining period under the 3-year/36,000-mile (whichever occurs first) Nissan New Vehicle Limited Warranty. Terms and conditions apply. See Warranty Information Booklet for details. ²Cargo and load capacity limited by weight and distribution. Always secure all cargo. ³VTRS requires owner registration, a constant 12-volt source, and cellular and GPS satellite availability to function properly. HomeLink[®] is a registered trademark of Gentex Corporation.

GENUINE NISSAN ACCESSORIES.

Get more information and shop online for Versa[®] Sedan Genuine Nissan Accessories by going to bit.ly/16versasedan_estore



To see Genuine Nissan Accessories in action, go to bit.ly/16versasedan_gnavideos

Nissan Versa[®] Sedan SL shown in Titanium with 16" Sporty Aluminum-alloy Wheels, Rear Decklid Spoiler (standard on SL trim), Fog Lights (standard on SL trim) and Splash Guards.

SPECIFICATIONS

Engine	S	S Plus	SV	SL
HR16DE – 1.6-liter DOHC 16-valve 4-cyl. engine	■	■	■	■
—Horsepower – 109 hp @ 6,000 rpm				
—Torque – 107 lb-ft @ 4,400 rpm				
Emissions – Tier 2-Bin 5 (EPA); LEV2-ULEV (CARB)	■	■	■	■
Dual injector system	■	■	■	■
Continuously Variable Valve Timing Control System (CVTCS) on intake and exhaust valves	■	■	■	■
Nissan Direct Ignition System	■	■	■	■
Platinum-tipped spark plugs	■	■	■	■
Electronic drive-by-wire throttle	■	■	■	■

Drivetrain	S	S Plus	SV	SL
Front engine/Front-Wheel Drive	■	■	■	■
5-speed manual transmission	■	■	■	■
4-speed automatic transmission	□			
Xtronic CVT® (Continuously Variable Transmission)		■	■	■

Brakes	S	S Plus	SV	SL
Vented front disc/rear drum brakes	■	■	■	■
Anti-lock Braking System (ABS)	■	■	■	■
Electronic Brake force Distribution (EBD)	■	■	■	■
Brake Assist	■	■	■	■

Suspension/Steering	S	S Plus	SV	SL
Independent strut front suspension with stabilizer bar	■	■	■	■
Torsion beam rear axle with integrated stabilizer bar	■	■	■	■
Vehicle-speed-sensitive electric power steering	■	■	■	■

Wheels/Tires	S	S Plus	SV	SL
15" x 5.5" steel wheels with wheel covers	■	■	■	■
15" x 5.5" split 6-spoke aluminum-alloy wheels			□	
15" x 5.5" split 5-spoke aluminum-alloy wheels			□	
16" x 6.0" 8-spoke aluminum-alloy wheels				■
16" x 6.0" Sporty aluminum-alloy wheels				□
P185/65HR15 all-season low rolling resistance tires	■	■	■	■
P195/55HR16 all-season low rolling resistance tires				■

Exterior Features	S	S Plus	SV	SL
Chrome-accented multi-reflector halogen headlights	■	■	■	■
Fog lights			□	■
Dual power body-color remote-controlled outside mirrors	■	■	■	■
Dual power body-color remote-controlled outside mirrors with integrated turn signal indicators				■
Chrome-accented grille	■	■	■	■
Black door handles	■	■	■	■
Chrome door handles			■	■
Chrome front fascia accents			□	■
Chrome trunk accent	□	□	□	□
Front tire and center fascia air deflectors	■	■	■	■
Rear tire air deflectors		■	■	■
Splash guards	□	□	□	□

■ Standard
□ Optional
□ Accessory
□ Part of SV Alloy Wheel Package

Exterior Features (continued)	S	S Plus	SV	SL
Rear spoiler	□			
Rear spoiler with integrated LED brake light		■	■	■

Comfort/Convenience	S	S Plus	SV	SL
NissanConnect SM with Navigation and Mobile Apps, including 5.8" color touch-screen monitor ¹			□	■
SiriusXM [®] Traffic and Travel Link ^{®2}			□	■
Hands-free text messaging assistant ³			□	■
RearView Monitor			□	■
Bluetooth [®] Hands-free Phone System ⁴	■	■	■	■
Fine Vision electroluminescent gauges			■	■
Trip computer (average MPG, current MPG, distance to empty)	■	■	■	■
Outside temperature display			■	■
Service interval reminder			■	■
Air conditioning	■	■	■	■
Integrated Key with remote keyless entry			■	■
Nissan Intelligent Key [®] with Push Button Ignition			■	■
Remote trunk release			■	■
Power door locks with auto-locking feature			■	■
Power windows with driver's one-touch auto-down feature			■	■
Tilt steering column	■	■	■	■
Cruise control		■	■	■
Variable intermittent windshield wipers			□	■
Rear window defroster	■	■	■	■
Auto-dimming inside rearview mirror with HomeLink [®]			■	■
Universal Transceiver and digital compass	□	□	□	□
Front map light with key linked illuminated entry			■	■
Trunk light	■	■	■	■
Front door pockets with bottle holders	■	■	■	■
Front and rear cup holders	■	■	■	■
Passenger seatback pocket			■	■
Sun visors with extensions	■	■	■	■
Passenger visor vanity mirror	■	■	■	■
Foldable assist grips	■	■	■	■
Digital clock	■	■	■	■
Auxiliary 12-volt DC power outlet	■	■	■	■
Battery saver	■	■	■	■

Seating/Appointments	S	S Plus	SV	SL
4-way manual driver's seat	■	■	■	■
6-way manual driver's seat			■	■
Driver's seat armrest			■	■
Cloth seat trim	■	■	■	■
Upgraded cloth seat trim			■	■
Leather-wrapped steering wheel			■	■
Carpeted floor mats	□	□	□	□
Cloth door trim accent			■	■
60/40 Split fold-down rear seats			■	■
Silver accents on dash, vent rings, shift knob and shifter surround			■	■

□ Part of SV Tech Package

Seating/Appointments (continued)	S	S Plus	SV	SL
Silver accents on steering wheel	■	■	■	■
Interior trim appliques			□	□
Chrome inside door handles and chrome-accented center vents			■	■
Illuminated kick plates	□	□	□	□
Interior trunk lid trim	■	■	■	■
Carpeted trunk mat	□	□	□	□

Audio/Entertainment	S	S Plus	SV	SL
AM/FM/CD audio system	■	■	■	■
Upgraded AM/FM/CD audio system			■	■
Premium AM/FM/CD audio system with 5.8" color display				■
Four speakers	■	■	■	■
SiriusXM [®] Satellite Radio ²			□	■
Streaming audio via Bluetooth [®] wireless technology ⁴			□	■
MP3/WMA CD playback capability	■	■	■	■
Auxiliary audio input jack	■	■	■	■
USB connection port for iPod [®] interface and other compatible devices			■	■
Radio Data System (RDS)	■	■	■	■
Speed-sensitive volume control	■	■	■	■
Steering wheel-mounted audio controls	■	■	■	■

Safety/Security	S	S Plus	SV	SL
Nissan Advanced Air Bag System with dual-stage supplemental front air bags with seat belt and occupant-classification sensors	■	■	■	■
Driver and front-passenger seat-mounted side-impact supplemental air bags	■	■	■	■
Roof-mounted curtain side-impact supplemental air bags for front and rear-seat outboard occupant head protection	■	■	■	■
Vehicle Dynamic Control (VDC) with Traction Control System (TCS)	■	■	■	■
3-point ALR/ELR passenger seat belt system (ELR for driver)	■	■	■	■
Front seat belts with pretensioners and load limiters	■	■	■	■
Height-adjustable front head restraints			■	■
Height-adjustable rear outboard head restraints	■	■	■	■
LATCH System (Lower Anchors and Tethers for Children)	■	■	■	■
Zone Body construction with front and rear crumple zones	■	■	■	■
Hood-buckling creases	■	■	■	■
Energy-absorbing steering column	■	■	■	■
Pipe-style steel side-door guard beams	■	■	■	■
Tire Pressure Monitoring System (TPMS)	■	■	■	■
Tire Pressure Monitoring System (TPMS) with Easy-Fill Tire Alert				■
Nissan Vehicle Immobilizer System				■

PACKAGES

SV Appearance Package
15" x 5.5" split 6-spoke aluminum-alloy wheels
Fog lights and chrome front fascia accents
Chrome front fascia accents
Variable intermittent windshield wipers

SV Tech Package
NissanConnect SM with Navigation and Mobile Apps, including 5.8" color touch-screen monitor
Nissan Voice Recognition for audio and navigation
SiriusXM [®] Traffic, Travel Link [®] and SiriusXM [®] Satellite Radio ¹
Streaming audio via Bluetooth [®] wireless technology ³
Hands-free text messaging assistant ²
RearView Monitor

DIMENSIONS/CAPACITIES/MPG

Dimensions – Inches			
Interior (front/rear)			
Head room	39.8/36.6	Hip room	48.1/46.2
Leg room	41.8/37.0	Shoulder room	51.7/51.9

Capacities			
Seating capacity	5	Cargo volume (cu. ft.)	14.9
Interior passenger volume (cu. ft.)	90.2	Fuel tank (gals.)	10.8

2016 EPA Fuel Economy Estimates			
City/Hwy/Combined MPG			
Manual transmission	27/36/30		
Automatic transmission	26/35/30		
Xtronic CVT [®]	31/40/35		
Actual mileage may vary with driving conditions – use for comparison only.			

¹Driving is serious business. Only use features when safe to do so. App availability is dependent upon vehicle model, trim level, packaging, and/or options. See NissanUSA.com/connect for complete app availability details. Never program while driving. GPS mapping may not be detailed in all areas or reflect current road status. Compatible smartphone required. Cellular network and GPS signals not available in all areas and/or at all times. Technology is evolving, and changes by independent companies are not within Nissan's control. Nissan is not responsible for associated costs that may be required for continued operation due to cellular network termination (including equipment upgrades, if available, or roaming charges on alternative networks) or other third party changes. Should a third party provider terminate/restrict service, service may be terminated without notice and with no liability to Nissan and its agents or affiliates. Subscription Agreement required and terms and conditions of Subscription Agreement apply. See NissanUSA.com/connect for details. Thirty-six (36) month trial period begins on your date of vehicle purchase or lease of a new Nissan; subsequently a paid subscription is required (excluding Pandora,[®] if Pandora[®] app via NissanConnect[™] is equipped on vehicle) at the then current rate to continue to receive services. Text rates and/or data usage may apply. ²Required monthly subscriptions sold separately for each available SiriusXM[®] feature after trial period, and are continuous until you call SiriusXM to cancel. Installation costs, one-time activation fee, other fees and taxes will apply. Each SiriusXM[®] feature availability is dependent upon vehicle model, trim level, packaging, and/or options, and may only be available in select markets. Satellite Radio U.S. service, NavWeather[®] service, and SiriusXM Travel Link[®] services (if any of the foregoing features are equipped on vehicle) available only to those 18 or older in the 48 contiguous states and D.C. Fees and programming subject to change. Subscriptions governed by Customer Agreement available at siriusxm.com. ©2015 Sirius XM Radio, Inc. Sirius,[®] XM[®] and all related marks and logos are trademarks of Sirius XM Radio, Inc. ³Use the text messaging feature after stopping your vehicle in a safe location. If you have to use the feature while driving, exercise extreme caution at all times so full attention may be given to vehicle operation. Compatible smartphone required. Text rates and/or data usage may apply. ⁴Availability of specific features is dependent upon the phone's Bluetooth[®] support. Please refer to your phone Owner's Manual for details. Bluetooth[®] word mark and logos are owned by Bluetooth SIG, Inc., and any use of such marks by Nissan is under license. See NissanUSA.com/bluetooth for details. HomeLink[®] is a registered trademark of Gentex Corporation. iPod[®] is a registered trademark of Apple, Inc. All rights reserved. iPod[®] or other external device not included. 16 Versa Sedan 1617495-N-9/15-50M-CGI