



Innovation
that excites

2015 VERSA® SEDAN

WELCOME TO THE 2015 NISSAN VERSA® SEDAN DIGITAL BROCHURE

Full of images, feature stories, and all the specification and trim level information you need to help select your Versa® Sedan.

[Click here](#) to sign up for news and updates on the 2015 Versa® Sedan.



WOULDN'T IT BE COOL IF_
YOUR CAR SAID
EXACTLY WHAT YOU FELT?

Today, things are different. Small is big. Smart is sexy. And living richly isn't about how much you spend. The perfect car for your fresh point of view? The 2015 Versa® Sedan. With a spacious interior, advanced technology, and performance that's as responsible as it is responsive. Change is good. Especially when it looks like this.



Nissan Versa® Sedan SL shown in Brilliant Silver.

NISSAN PUREDRIVE™

INNOVATION THAT GIVES YOU THE BEST OF BOTH WORLDS.

40 Miles per gallon highway, so you can breeze past the pump with ease¹
MPG

4 Low rolling resistance tires that use less energy to roll, so you use less fuel

.288 Drag coefficient, thanks to an exceptionally aerodynamic design²
CD

Wouldn't it be cool if you could get excellent fuel economy in a roomy, comfortable car that's lots of fun to drive? With Versa®, we got there by developing everything from exterior aerodynamics that whisper through the wind to an advanced 1.6-liter 4-cylinder engine to a virtually gearless Xtronic CVT® transmission that maximizes efficiency and performance. Best of all, Versa® is just one of a family of PUREDRIVE™ vehicles, reflecting Nissan's commitment to developing more environmentally friendly transportation for all of us.



Click the button to see a short video on Versa's CVT. Or go to bit.ly/NissanCVT

¹2015 EPA Fuel Economy Estimates 31 city/40 highway MPG for Versa® Sedan 1.6-L with CVT. Actual mileage may vary with driving conditions – use for comparison only. ²S Plus, SV and SL models; .319 on S model.



iPhone® is a registered trademark of Apple, Inc. All rights reserved. iPhone™ not included.

**FREEDOM IS A FEELING
YOU CAN TAKE WITH YOU ANYWHERE.**



Nissan Versa® Sedan SL shown in Titanium with optional equipment.



A little bit of planning goes a long way. When designing Versa®'s interior, we pushed the wheels to the corners, allowing the suspension to move out and away from the cabin. The result? Plenty of leg room. Carpool or road trip, looks like Versa® is a star.

Nissan Versa® Sedan SL shown in Sandstone Cloth with optional equipment.

NISSANCONNECTSM WITH MOBILE APPS INNOVATION THAT KEEPS YOUR WORLD WITHIN REACH.

NissanConnectSM is smart technology that you'll find incredibly handy. And with NissanConnectSM with Mobile Apps, your Versa[®] Sedan becomes your smartphone's best friend. Music, information, and the Mobile Apps that keep you connected to your world all work seamlessly together right through Versa[®] Sedan's audio system. Even better – the basic app package is complimentary for the first three years.¹

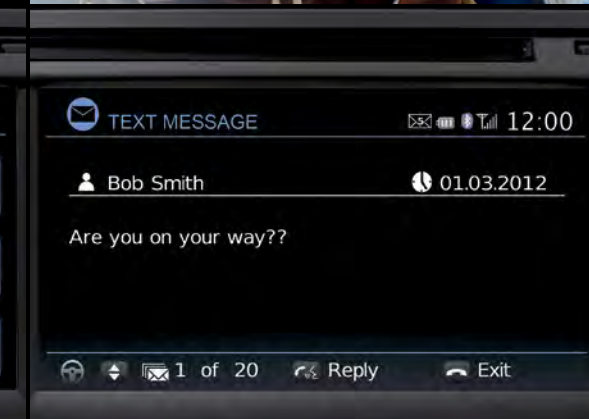
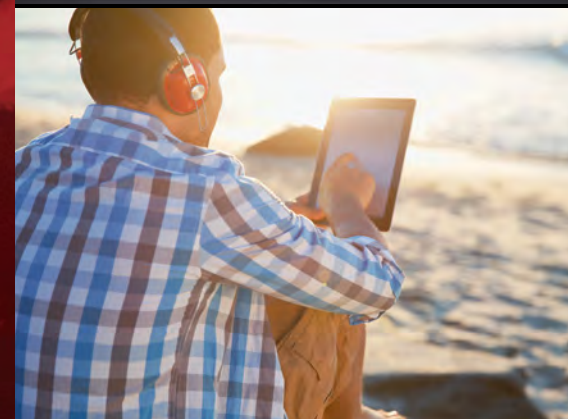
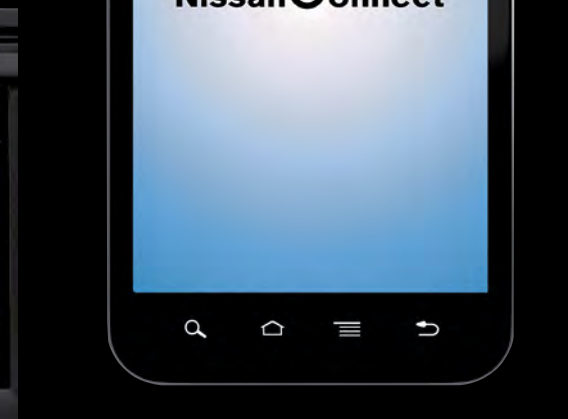
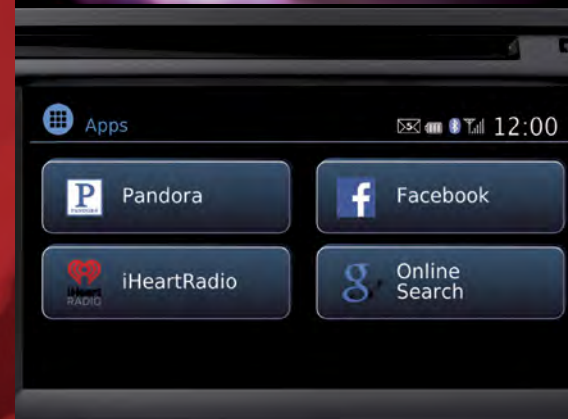
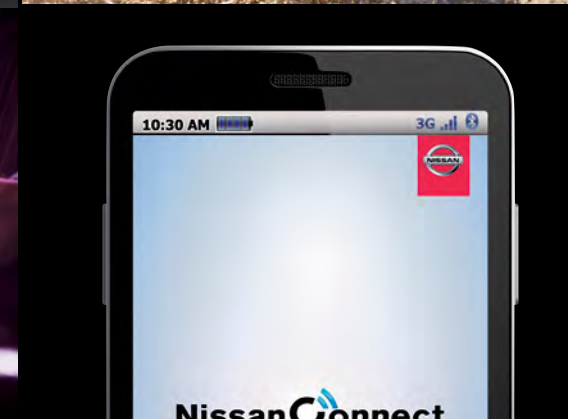
NissanConnectSM with Mobile Apps: for the music you love.¹ Imagine the choices you have with Pandora,[®] iHeartRadio,[™] Slacker[®] and more. And it couldn't be easier – download the NissanConnectSM app, and you can stream the music wirelessly via Bluetooth[®] or use Versa[®] Sedan's iPod[®]/USB input.^{2,3} For more information, video demonstrations, smartphone compatibility, FAQs and enrollment assistance, go to www.NissanUSA.com/connect

NissanConnectSM with Mobile Apps: everything that matters at your fingertips.¹ You're wired to your world with the Mobile Apps. Versa[®] Sedan lets you keep track of Twitter,[®] Facebook,[®] and more. And thanks to Versa[®] Sedan's available navigation system and NissanConnectSM's compatibility with location-based services, including Online Search powered by Google[®] and TripAdvisor,[®] getting around has never been easier.^{4,5,6} You can find out more about the app and feature availability at www.NissanUSA.com/connect

More than just apps, NissanConnectSM keeps you in the loop with:

- Nissan Navigation System – with voice recognition featuring one-shot destination entry, SiriusXM[®] Traffic, and Travel Link[™]^{4,5}
- iPod[®]/USB input³
- Streaming audio via Bluetooth[®]²
- Hands-free text messaging assistant⁷

¹Driving is serious business. Only use NissanConnectSM services when safe to do so. Subscription Agreement required. Compatible smartphone required. Not all app features are available for all models. Some apps have late availability. May require dealer service visit or software upgrade to activate. Never program while driving. GPS mapping may not be detailed in all areas or reflect current road regulations. Cellular network not available in all areas. Cellular network, apps, and services, including Google[®] services, are provided by independent companies not within Nissan's control and may require subscription and owner consent to activate. Should provider terminate/restrict service, service may be terminated without notice or liability to Nissan and/or its agents. Nissan not responsible for any equipment or app replacement/upgrades, or associated costs, that may be required for continued operation. Terms and conditions of Subscription Agreement apply. 36-month trial period starts on vehicle sale date; subsequently a paid subscription is required at the then current rate (excludes Pandora[®]). Standard text rates and/or data usage may apply. See dealer and check www.NissanUSA.com/connect for details. ²Availability of specific features is dependent upon the phone's Bluetooth[®] support. Please refer to your phone Owner's Manual for details. The Bluetooth[®] word mark and logos are owned by Bluetooth SIG, Inc., and any use of such marks by Nissan is under license. ³Driving is serious business and requires your full attention. Do not operate any devices connected to the USB or auxiliary audio input jack while driving. iPod[®] and iPhone[®] are registered trademarks of Apple, Inc. All rights reserved. iPod[®] and iPhone[®] not included. ⁴Never program while driving. GPS mapping may not be detailed in all areas or reflect current road regulations. ⁵Required SiriusXM[®] Satellite Radio, SiriusXM[®] Traffic and Travel Link[™] subscriptions sold separately after trial period. Installation costs, one-time activation fee, other fees and taxes will apply. SiriusXM[®] Traffic available in select markets. Services available only to those 18 or older in the 48 contiguous states and D.C. Fees and programming subject to change. Subscriptions governed by Customer Agreement available at siriusxm.com. ©2014 Sirius XM Radio Inc. Sirius[®] XM[®] and all related marks and logos are trademarks of Sirius XM Radio Inc. ⁶Points of Interest and/or Send to Car may require subscription and owner consent to activate. Certain services, including Google Points of Interest and/or Send to Car, provided by independent companies not within Nissan's control. Should service provider terminate/restrict service, service may be suspended or terminated without notice or liability to Nissan and/or its agents. Nissan not responsible for any equipment replacement or upgrades, or associated costs, that may be required for continued operation due to service changes. ⁷Use the text messaging feature after stopping your vehicle in a safe location. If you have to use the feature while driving, exercise extreme caution at all times so full attention may be given to vehicle operation. Compatible smartphone required. Standard text rates and/or data usage may apply. Facebook[®] is a registered trademark of Facebook, Inc. Google[®] is a registered trademark of Google Inc. iHeartRadio[™] is a trademark of Clear Channel Broadcasting Inc. Pandora[®] is a registered trademark of Pandora Media. Slacker[®] is a registered trademark of Slacker, Inc. TripAdvisor[®] is a registered trademark of TripAdvisor LLC. Twitter[®] is a registered trademark of Twitter, Inc.





Nissan Versa® Sedan SL shown in Charcoal Cloth with optional equipment.



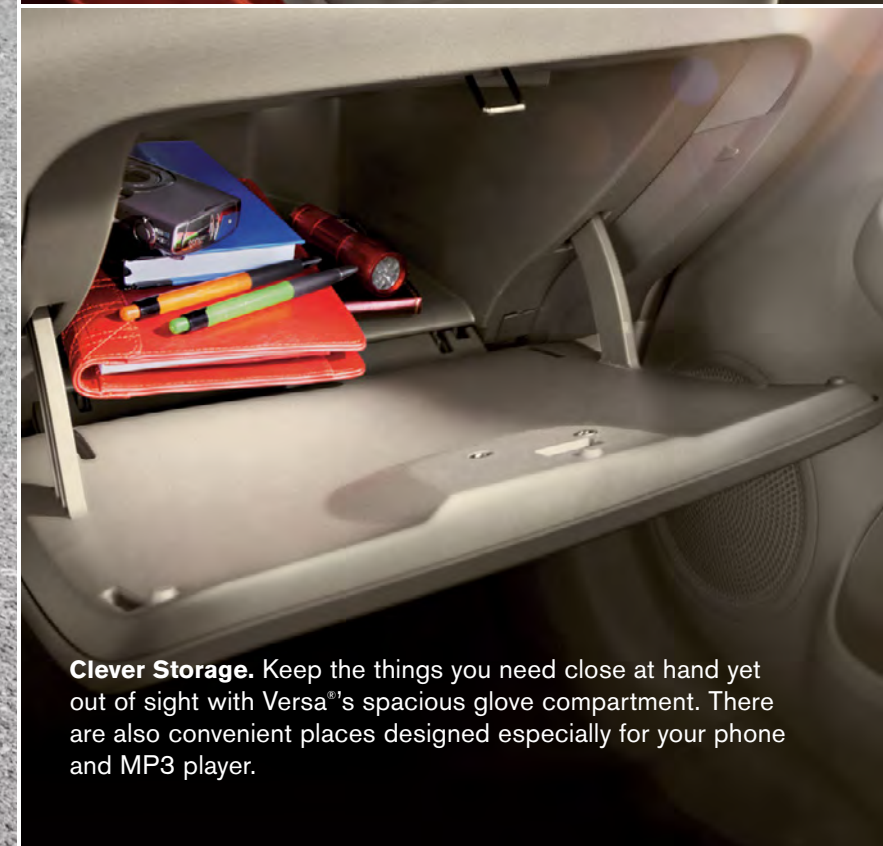
14.9
CU. FT.
OF TRUNK SPACE*

Life is easier when you can bring everything you need. Versa® Sedan's oversized trunk means there's no need to compromise. Jam session after work? No problem. Load your kit in and help keep it safe and out of sight. Inside, versatile storage options get things organized with places for all of your essentials – even those lucky drumsticks.

*Cargo shown for display purposes only. Always secure all cargo. Cargo and load capacity limited by weight and distribution.



Split Fold-down Seats. An available 60/40 split fold-down rear seat gives you real flexibility carrying people and cargo. The huge pass-through means tall and wide items are always welcome along for the ride!



Clever Storage. Keep the things you need close at hand yet out of sight with Versa®'s spacious glove compartment. There are also convenient places designed especially for your phone and MP3 player.

NISSAN SAFETY SHIELD® PHILOSOPHY

INNOVATION THAT LOOKS OUT FOR YOU.

Wouldn't it be cool if you had the confidence you need for every part of your drive? The Nissan Safety Shield® is a comprehensive approach to safety that guides the engineering and development of every vehicle we make.

MONITOR

Smart technologies help monitor conditions. Like an available rearview camera that helps you see something behind you, or a system that helps ensure you're travelling on properly inflated tires.

Tire Pressure Monitoring System with Available Easy-Fill Tire Alert^{1,2}

Lets you know when a tire is low. And Easy-Fill Tire Alert takes the guesswork out of filling your tires, with a beep of the horn when you've reached the correct pressure.

Available RearView Monitor³

RESPOND

Whether you need to hit the brakes hard or maneuver around an unexpected obstacle, these standard technologies help you respond to a potentially harmful situation.

Vehicle Dynamic Control helps you maintain your steered path.⁴

Traction Control System helps reduce wheelspin in low-traction situations.

Anti-lock Braking System helps you maintain steering control around obstacles while braking heavily.

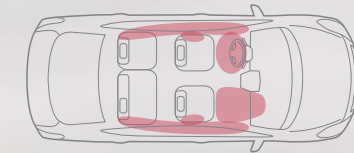
Electronic Brake force Distribution sends extra force to the rear brakes when you have additional weight of passengers or cargo in the back.

Brake Assist helps apply maximum braking force if it detects hard braking and senses you are in an emergency situation.⁵



PROTECT

When a collision is unavoidable, Nissan's Zone Body construction helps absorb the impact while the advanced seat belt and air bag systems help protect passengers.



6 STANDARD AIR BAGS⁶

Nissan Advanced Air Bag System with dual-stage supplemental front air bags with seat belt and occupant-classification sensors⁶

Front seat-mounted side-impact supplemental air bags⁶

Roof-mounted curtain side-impact supplemental air bags⁶

LATCH System (Lower Anchors and Tethers for Children)



Nissan safety engineers have dedicated thousands of hours to evaluating hundreds of child restraints in Nissans. The result: An industry first, The Snug Kids® Child Safety Seat Fit Guide. This guide lists child seats that fit the rear seats of Nissan vehicles, as well as offers invaluable tips on correct installation. Look for the latest Fit Guide at NissanUSA.com/SnugKids.

Click the button to see a short video on how Snug Kids® helps you find the right CRS for your Nissan. Or go to bit.ly/NissanSnugKids

¹Tire Pressure Monitoring System is not a substitute for regular tire pressure checks. ²Vehicle must be on for the Easy-Fill Tire Alert to operate. ³Parking aid/convenience feature. Cannot completely eliminate blind spots. May not detect every object and does not warn of moving objects. Always check surroundings and turn to look behind you before moving vehicle. ⁴VDC, which should remain on when driving except when freeing the vehicle from mud or snow, cannot prevent accidents due to abrupt steering, carelessness, or dangerous driving techniques. Always drive safely. ⁵Brake Assist is only an aid to assist the driver and is not a collision warning or avoidance device. It is the driver's responsibility to be in control of the vehicle at all times. ⁶Air bags are only a supplemental restraint system; always wear your seat belt. Even with the occupant-classification sensor, rear-facing child restraints should not be placed in the front-passenger's seat. Also, all children 12 and under should ride in the rear seat properly secured in child restraints, booster seats, or seat belts according to their size. Air bags will only inflate in certain accidents; see your Owner's Manual for more details. Inflated air bags shown for illustration purposes only; actual coverage area may differ. Air bags inflate after deployment.



GENUINE NISSAN ACCESSORIES.

Every Genuine Nissan Accessory is: custom-fit, custom-designed and durability-tested; backed by Nissan's 3-year/36,000-mile (whichever occurs first) limited warranty; and can be financed when installed by dealer at time of purchase.¹

A. Interior Accent Lighting

Bring some disco to your drive.

B. Chrome Door Handle Accents

Super-slick and oh, so shiny!

C. Rear Decklid Spoiler and Chrome Trunk Accent

Spoil yourself in style (sold separately).

D. Interior Trim Appliqués

It's all about the details.

E. Portable Cargo Organizer²

A place for everything. And everything in its place.

F. Illuminated Kick Plates

Fewer scuffs and a grand entry, every time.

G. Carpeted Trunk Mat²

Because being a trunk isn't easy.

H. Auto-dimming Rearview Mirror with HomeLink[®] and Compass

Perfect for dim bulbs driving with their brights on.

Additional Accessories:

- Nissan VTRS (Vehicle Tracking and Recovery System)³
- 16" Sporty Aluminum-alloy Wheels
- 15" Aluminum-alloy Wheels
- Fog Lights
- Carpeted Floor Mats
- All-season Floor Mats
- Splash Guards
- And More

¹Covered by Nissan's Limited Warranty on Genuine Nissan Accessories for the longer of 12 months/12,000 miles (whichever occurs first) or the remaining period under the 3-year/36,000-mile (whichever occurs first) Nissan New Vehicle Limited Warranty. Terms and conditions apply. See Warranty Information Booklet for details. ²Cargo and load capacity limited by weight and distribution. Always secure all cargo. ³VTRS requires owner registration, a constant 12-volt source, and cellular and GPS satellite availability to function properly. HomeLink[®] is a registered trademark of Johnson Controls Technology Company.

Click the button to see short videos on Genuine Nissan Accessories in action. Or go to bit.ly/gnavideos_versasedan

TURN BRAND-NEW INTO ALL YOU.

For more information and to shop online for Versa[®] Sedan Genuine Nissan Accessories, go to bit.ly/versasedan_estore



Nissan Versa[®] Sedan SL shown in Metallic Blue with 16" Sporty Aluminum-alloy Wheels, Fog Lights (standard on SL trim) and Splash Guards.

CHOOSE YOUR TRIM LEVEL

S

- 1.6-liter DOHC 4-cylinder engine
- 5-speed manual transmission or 4-speed automatic transmission
- 15" Steel wheels with full wheel covers
- P185/65HR15 all-season low rolling resistance tires
- Chrome-accented grille
- Front tire and center fascia air deflectors
- AM/FM/CD audio system with auxiliary audio input jack¹
- Bluetooth® Hands-free Phone System²
- Steering wheel-mounted audio controls
- Silver accents on steering wheel
- Trip computer
- Air conditioning
- Sun visors with extension
- Passenger visor vanity mirror
- Six standard air bags
- Anti-lock Braking System with Electronic Brake force Distribution and Brake Assist
- Vehicle Dynamic Control (VDC) with Traction Control System (TCS)



SV

INCLUDES S PLUS EQUIPMENT PLUS:

- Chrome outside door handles
- Dual power body-color remote-controlled outside mirrors
- Integrated Key with remote keyless entry
- Remote trunk release
- Power door locks with auto-locking features
- Power windows with driver's one-touch auto-down feature
- Fine Vision electroluminescent gauges
- Outside temperature display
- Upgraded AM/FM/CD audio system
- USB connection port for iPod® interface and other compatible devices¹
- 6-way manual driver's seat
- Driver's seat armrest
- Passenger seatback pocket
- Upgraded cloth seat trim
- 60/40 Split fold-down rear seats
- Cloth door trim accent
- Silver accents on dash, vent rings, shift knob and shifter surround
- Chrome inside door handles, chrome-accented center vents and parking brake
- Front map light with key-linked illuminated entry
- Tricot fabric headliner
- Foldable assist grips

KEY AVAILABLE PACKAGE:

- Alloy Wheel Package



S PLUS

INCLUDES S EQUIPMENT PLUS:

- Up to 40 MPG highway³
- Standard Xtronic CVT® (Continuously Variable Transmission)
- Rear tire air deflectors
- Rear spoiler with integrated LED brake light
- Cruise control
- Rear speakers



SL

INCLUDES SV EQUIPMENT PLUS:

- 16" Aluminum-alloy wheels
- P195/55HR16 all-season low rolling resistance tires
- Fog lights
- Dual power body-color outside mirrors with integrated turn signals
- Nissan Intelligent Key® with Push Button Ignition
- Premium AM/FM/CD audio system with 5" color display
- NissanConnectSM with Mobile Apps
- Hands-free text messaging assistant
- Streaming audio via Bluetooth® wireless technology²
- SiriusXM® Satellite Radio⁴
- Variable intermittent windshield wipers
- Tire Pressure Monitoring System (TPMS) with Easy-Fill Tire Alert
- Nissan Vehicle Immobilizer System

KEY AVAILABLE PACKAGE:

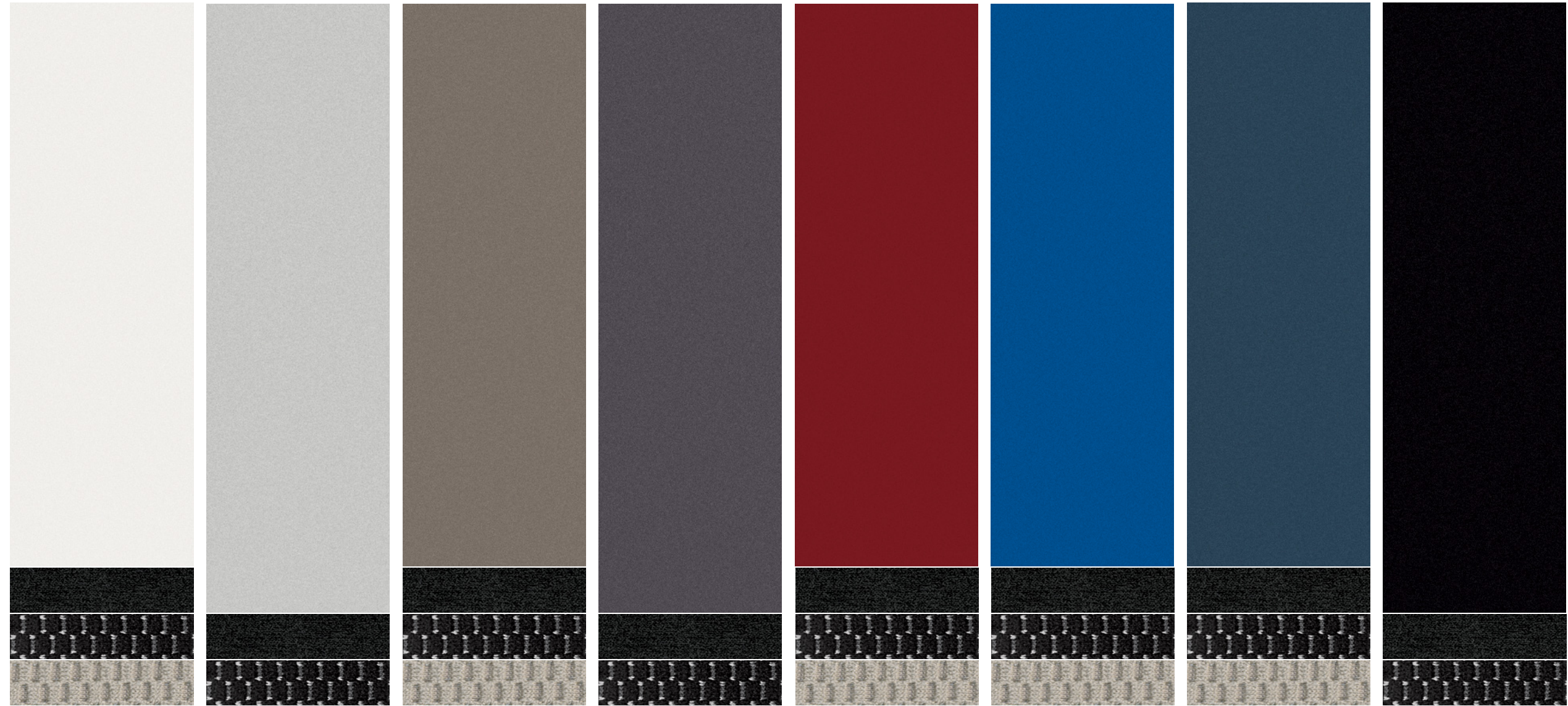
- Tech Package



CHOOSE YOUR COLOR



You've decided which Versa® Sedan you want, now here comes the best part: deciding what it's going to look like. Choose your favorite color and then pick from the available interiors based on the model of your choice.



■ Standard

Nissan has taken care to ensure that the color swatches presented here are the closest possible representations of actual vehicle colors. Swatches may vary slightly due to viewing light or screen quality. Please see the actual colors at your local Nissan dealer.

Fresh Powder QM1

Brilliant Silver K23

Titanium KAC

Amethyst Gray KBD

Red Brick NAC

Metallic Blue B17

Graphite Blue RAQ

Super Black KH3

S S PLUS SV SL

S S PLUS SV SL

S S PLUS SV SL

S S PLUS SV SL

S S PLUS SV SL

S S PLUS SV SL

S S PLUS SV SL

S S PLUS SV SL

CHARCOAL CLOTH
SANDSTONE CLOTH

| | | | |
|---|---|---|---|
| ■ | ■ | ■ | ■ |
| | | ■ | ■ |

| | | | |
|---|---|---|---|
| ■ | ■ | ■ | ■ |
| | | | |

| | | | |
|---|---|---|---|
| ■ | ■ | ■ | ■ |
| | | ■ | ■ |

| | | | |
|---|---|---|---|
| ■ | ■ | ■ | ■ |
| | | | |

| | | | |
|---|---|---|---|
| ■ | ■ | ■ | ■ |
| | | ■ | ■ |

| | | | |
|---|---|---|---|
| ■ | ■ | ■ | ■ |
| | | ■ | ■ |

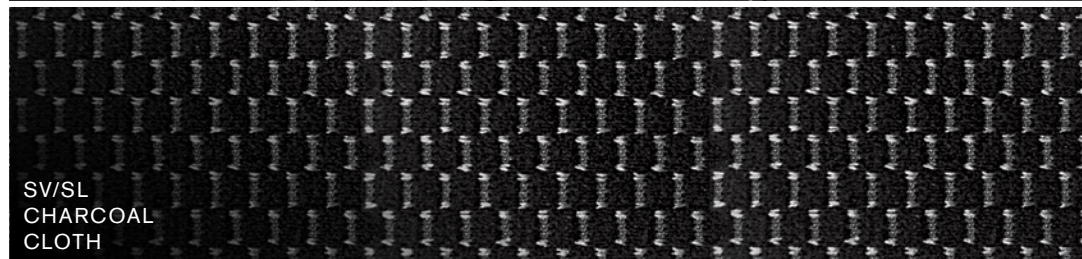
| | | | |
|---|---|---|---|
| ■ | ■ | ■ | ■ |
| | | ■ | ■ |

| | | | |
|---|---|---|---|
| ■ | ■ | ■ | ■ |
| | | | |

CHOOSE YOUR FABRIC



S/S PLUS
CHARCOAL
CLOTH



SV/SL
CHARCOAL
CLOTH



SV/SL
SANDSTONE
CLOTH

SPECIFICATIONS

| Engine | S | S Plus | SV | SL |
|--|---|--------|----|----|
| HR16DE – 1.6-liter DOHC 16-valve 4-cyl. engine | ■ | ■ | ■ | ■ |
| Horsepower – 109 hp @ 6,000 rpm | | | | |
| Torque – 107 lb-ft @ 4,400 rpm | | | | |
| Emissions – Tier 2-Bin 5 (EPA); LEV2-ULEV (CARB) | ■ | ■ | ■ | ■ |
| Dual injector system | ■ | ■ | ■ | ■ |
| Continuously Variable Valve Timing Control System (CVTCS) on intake and exhaust valves | ■ | ■ | ■ | ■ |
| Nissan Direct Ignition System | ■ | ■ | ■ | ■ |
| Platinum-tipped spark plugs | ■ | ■ | ■ | ■ |
| Electronic drive-by-wire throttle | ■ | ■ | ■ | ■ |

| Drivetrain | S | S Plus | SV | SL |
|---|---|--------|----|----|
| Front engine/Front-Wheel Drive | ■ | ■ | ■ | ■ |
| 5-speed manual transmission | ■ | | | |
| 4-speed automatic transmission | □ | | | |
| Xtronic CVT® (Continuously Variable Transmission) | | ■ | ■ | ■ |

| Brakes | S | S Plus | SV | SL |
|---|---|--------|----|----|
| Vented front disc/rear drum brakes | ■ | ■ | ■ | ■ |
| Anti-lock Braking System (ABS) | ■ | ■ | ■ | ■ |
| Electronic Brake force Distribution (EBD) | ■ | ■ | ■ | ■ |
| Brake Assist | ■ | ■ | ■ | ■ |

| Suspension/Steering | S | S Plus | SV | SL |
|--|---|--------|----|----|
| Independent strut front suspension with stabilizer bar | ■ | ■ | ■ | ■ |
| Torsion beam rear axle with integrated stabilizer bar | ■ | ■ | ■ | ■ |
| Vehicle-speed-sensitive electric power steering | ■ | ■ | ■ | ■ |

| Wheels/Tires | S | S Plus | SV | SL |
|---|---|--------|----|----|
| 15" x 5.5" steel wheels with wheel covers | ■ | ■ | ■ | |
| 15" x 5.5" 6-split spoke aluminum-alloy wheels | | | □ | |
| 15" x 5.5" 5-split spoke aluminum-alloy wheels | | | □ | |
| 16" x 6.0" 8-spoke aluminum-alloy wheels | | | | ■ |
| 16" x 6.0" Sporty aluminum-alloy wheels | | | | □ |
| P185/65HR15 all-season low rolling resistance tires | ■ | ■ | ■ | |
| P195/55HR16 all-season low rolling resistance tires | | | | ■ |

■ Standard
 □ Optional
 □ Accessory
 □ Part of SV Convenience Package
 □ Part of SL Tech Package

| Exterior Features | S | S Plus | SV | SL |
|--|---|--------|----|----|
| Chrome-accented multi-reflector halogen headlights | ■ | ■ | | ■ |
| Fog lights | | | □ | ■ |
| Dual manual black outside mirrors | ■ | ■ | | |
| Dual power body-color remote-controlled outside mirrors | | | ■ | |
| Dual power body-color remote-controlled outside mirrors with integrated turn signal indicators | | | | ■ |
| Chrome-accented grille | ■ | ■ | ■ | ■ |
| Black door handles | ■ | ■ | | |
| Chrome door handles | | | ■ | ■ |
| Chrome trunk accent | □ | □ | □ | □ |
| Front tire and center fascia air deflectors | ■ | ■ | ■ | ■ |
| Rear tire air deflectors | | ■ | ■ | ■ |
| Splash guards | □ | □ | □ | □ |
| Rear spoiler | □ | | | |
| Rear spoiler with integrated LED brake light | | ■ | ■ | ■ |

| Comfort/Convenience | S | S Plus | SV | SL |
|--|---|--------|----|----|
| Nissan Navigation System with 5.8" color touch-screen monitor and Voice Recognition for audio and navigation | | | | □ |
| SiriusXM® Traffic and Travel Link® ¹ | | | | □ |
| NissanConnect SM with Mobile Apps | | | | ■ |
| Hands-free text messaging assistant ² | | | | ■ |
| RearView Monitor | | | | □ |
| Bluetooth® Hands-free Phone System ³ | ■ | ■ | ■ | ■ |
| Fine Vision electroluminescent gauges | | | ■ | ■ |
| Trip computer (average MPG, current MPG, distance to empty) | ■ | ■ | ■ | ■ |
| Outside temperature display | | | ■ | ■ |
| Air conditioning | ■ | ■ | ■ | ■ |
| Integrated Key with remote keyless entry | | | ■ | |
| Nissan Intelligent Key® with Push Button Ignition | | | | ■ |
| Remote trunk release | | | ■ | ■ |
| Power door locks with auto-locking feature | | | ■ | ■ |
| Power windows with driver's one-touch auto-down feature | | | ■ | ■ |
| Tilt steering column | ■ | ■ | ■ | ■ |
| Cruise control | | ■ | ■ | ■ |
| Variable intermittent windshield wipers | | | | ■ |

| Comfort/Convenience (continued) | S | S Plus | SV | SL |
|--|---|--------|----|----|
| Rear window defroster | ■ | ■ | ■ | ■ |
| Auto-dimming inside rearview mirror with HomeLink® | | | | |
| Universal Transceiver and digital compass | □ | □ | □ | □ |
| Front map light with key linked illuminated entry | | | ■ | ■ |
| Trunk light | ■ | ■ | ■ | ■ |
| Front door pockets with bottle holders | ■ | ■ | ■ | ■ |
| Front and rear cup holders | ■ | ■ | ■ | ■ |
| Passenger seatback pocket | | | ■ | ■ |
| Sun visors with extensions | ■ | ■ | ■ | ■ |
| Passenger visor vanity mirror | ■ | ■ | ■ | ■ |
| Foldable assist grips | | | ■ | ■ |
| Digital clock | ■ | ■ | ■ | ■ |
| Auxiliary 12-volt DC power outlet | ■ | ■ | ■ | ■ |
| Battery saver | ■ | ■ | ■ | ■ |

| Seating/Appointments | S | S Plus | SV | SL |
|--|---|--------|----|----|
| 4-way manual driver's seat | ■ | ■ | | |
| 6-way manual driver's seat | | | ■ | ■ |
| Driver's seat armrest | | | ■ | ■ |
| Cloth seat trim | ■ | ■ | | |
| Upgraded cloth seat trim | | | ■ | ■ |
| Carpeted floor mats | □ | □ | □ | □ |
| Cloth door trim accent | | | ■ | ■ |
| 60/40 Split fold-down rear seats | | | ■ | ■ |
| Silver accents on dash, vent rings, shift knob and shifter surround | | | ■ | ■ |
| Silver accents on steering wheel | ■ | ■ | | |
| Interior trim appliqué | | | □ | □ |
| Chrome inside door handles, chrome-accented center vents and parking brake | | | ■ | ■ |
| Illuminated kick plates | □ | □ | □ | □ |
| Tricot fabric headliner | | | ■ | ■ |
| Interior trunk lid trim | | | ■ | ■ |
| Carpeted trunk mat | □ | □ | □ | □ |

¹Required SiriusXM® Satellite Radio, SiriusXM® Traffic and Travel Link® subscriptions sold separately after trial period. Installation costs, one-time activation fee, other fees and taxes will apply. SiriusXM® Traffic available in select markets. Services available only to those 18 or older in the 48 contiguous states and D.C. Fees and programming subject to change. Subscriptions governed by Customer Agreement available at siriusxm.com. ©2014 Sirius XM Radio Inc. Sirius® XM® and all related marks and logos are trademarks of Sirius XM Radio Inc. ²Use the text messaging feature after stopping your vehicle in a safe location. If you have to use the feature while driving, exercise extreme caution at all times so full attention may be given to vehicle operation. Compatible smartphone required. Standard text rates and/or data usage may apply. ³Availability of specific features is dependent upon the phone's Bluetooth® support. Please refer to your phone Owner's Manual for details. Bluetooth® word mark and logos are owned by Bluetooth SIG, Inc., and any use of such marks by Nissan is under license. HomeLink® is a registered trademark of Johnson Controls Technology Company. iPod® is a registered trademark of Apple, Inc. All rights reserved. iPod® not included.

SPECIFICATIONS (CONTINUED)

| Audio/Entertainment | S | S Plus | SV | SL |
|--|---|--------|----|----|
| AM/FM/CD audio system | ■ | ■ | | |
| Upgraded AM/FM/CD audio system | | | ■ | |
| Premium AM/FM/CD audio system with 5" color display | | | | ■ |
| Two speakers | ■ | | | |
| Four speakers | | ■ | ■ | ■ |
| SiriusXM® Satellite Radio¹ | | | | ■ |
| Streaming audio via Bluetooth® wireless technology³ | | | | ■ |
| MP3/WMA CD playback capability | ■ | ■ | ■ | ■ |
| Auxiliary audio input jack | ■ | ■ | ■ | ■ |
| USB connection port for iPod® interface and other compatible devices | | | ■ | ■ |
| Radio Data System (RDS) | ■ | ■ | ■ | ■ |
| Speed-sensitive volume control | ■ | ■ | ■ | ■ |
| Steering wheel-mounted audio controls | ■ | ■ | ■ | ■ |

| Safety/Security | S | S Plus | SV | SL |
|---|---|--------|----|----|
| Nissan Advanced Air Bag System with dual-stage supplemental front air bags with seat belt and occupant-classification sensors | ■ | ■ | ■ | ■ |
| Driver and front-passenger seat-mounted side-impact supplemental air bags | ■ | ■ | ■ | ■ |
| Roof-mounted curtain side-impact supplemental air bags for front and rear-seat outboard occupant head protection | ■ | ■ | ■ | ■ |
| Vehicle Dynamic Control (VDC) with Traction Control System (TCS) | ■ | ■ | ■ | ■ |
| 3-point ALR/ELR passenger seat belt system (ELR for driver) | ■ | ■ | ■ | ■ |
| Front seat belts with pretensioners and load limiters | ■ | ■ | ■ | ■ |
| Height-adjustable front head restraints | | | ■ | ■ |
| Height-adjustable rear outboard head restraints | ■ | ■ | ■ | ■ |
| LATCH System (Lower Anchors and Tethers for CHildren) | ■ | ■ | ■ | ■ |
| Zone Body construction with front and rear crumple zones | ■ | ■ | ■ | ■ |

| Safety/Security (continued) | S | S Plus | SV | SL |
|--|---|--------|----|----|
| Hood-buckling creases | ■ | ■ | ■ | ■ |
| Energy-absorbing steering column | ■ | ■ | ■ | ■ |
| Pipe-style steel side-door guard beams | ■ | ■ | ■ | ■ |
| Tire Pressure Monitoring System (TPMS) | ■ | ■ | ■ | |
| Tire Pressure Monitoring System (TPMS) with Easy-Fill Tire Alert | | | | ■ |
| Nissan Vehicle Immobilizer System | | | | ■ |

PACKAGES

- A SV Alloy Wheel Package**
15" x 5.5" 6-spoke aluminum-alloy wheels
- T SL Tech Package**
Nissan Navigation System with 5.8" color touch-screen monitor and Voice Recognition for audio and navigation
SiriusXM® Traffic and Travel Link®¹
RearView Monitor

DIMENSIONS/CAPACITIES/WEIGHTS/MPG

| Dimensions – Inches | | | | |
|------------------------------|-----------|---------------|-----------|-----------|
| Exterior | | | | |
| Wheelbase | 102.4 | | | |
| Overall length | 175.4 | | | |
| Overall width | 66.7 | | | |
| Overall height | 59.6 | | | |
| Track width (front/rear) | 58.3/58.5 | | | |
| Aerodynamics – Cd | S | S Plus | SV | SL |
| Drag coefficient | 0.319 | 0.288 | 0.288 | 0.288 |
| Interior (front/rear) | | | | |
| Head room | 39.8/36.6 | | | |
| Leg room | 41.8/37.0 | | | |
| Hip room | 48.1/46.2 | | | |
| Shoulder room | 51.7/51.9 | | | |

| Capacities | | | | |
|-------------------------------------|------|--|--|--|
| Seating capacity | 5 | | | |
| Interior passenger volume (cu. ft.) | 90.2 | | | |
| Cargo volume (cu. ft.) | 14.9 | | | |
| Fuel tank (gals.) | 10.8 | | | |

| Curb Weights – Lbs. | | | | |
|------------------------|----------|---------------|-----------|-----------|
| Base Total | S | S Plus | SV | SL |
| Manual transmission | 2,363 | – | – | – |
| Automatic transmission | 2,421 | – | – | – |
| Xtronic CVT® | – | 2,437 | 2,468 | 2,498 |

| 2013 EPA Fuel Economy Estimates | | | | |
|---------------------------------|----------|---------------|-----------|-----------|
| City/Hwy/Combined MPG | S | S Plus | SV | SL |
| Manual transmission | 27/36/30 | – | – | – |
| Automatic transmission | 26/35/30 | – | – | – |
| Xtronic CVT® | – | 31/40/35 | 31/40/35 | 31/40/35 |

¹ Actual mileage may vary with driving conditions – use for comparison only.

BUYING/OWNING



Nissan Motor Acceptance Corporation. Whether you're buying or leasing, you'll find attractive rates and flexible terms to make your purchase more accessible.

College Grad Program. Ask about our special new vehicle pricing available to individuals up to two years after graduation.

Active and Reserve US Military Program. Ask about our fixed discount on new vehicle pricing available to those serving our country.

New Vehicle Limited Warranties. Protection for your new Nissan includes 3-year/36,000-mile (whichever occurs first) basic coverage and 5-year/60,000-mile (whichever occurs first) powertrain coverage. Terms, conditions and exclusions apply. See Warranty Information Booklet for complete details.

Security+Plus® For additional peace of mind, a variety of extended service plans lets you tailor the coverage to your driving habits.

Maintenance+Plus® This extended plan ensures your Nissan will receive up to 17 different services and over 33 different inspection items at each visit, using the most up-to-date diagnostic equipment available.

Genuine Nissan Parts. When it comes time for service, any necessary replacement parts will be made using Genuine Nissan new or remanufactured parts, or Nissan-approved parts. And they're the only parts to carry Nissan's factory-backed limited warranty.

Nissan Mobility Assist. This program offers reimbursements toward the purchase and installation of certain mobility assistance products for program-eligible Nissans. Go to NissanUSA.com/mobility for more info.

Nissan's environmental action plan focuses on several key areas. Increasing production of Zero Emission vehicles, including the 100% electric LEAF.® Improving fuel efficiency through our PUREDRIVE™ measures. And reducing the environmental impact of manufacturing, as seen at our new, energy-efficient, low-emissions paint plant in Tennessee.

For more information, log on to NissanUSA.com/green



Follow us: [@NissanSupport](https://twitter.com/NissanSupport)

At NissanUSA.com, you'll find virtual product demonstrations, a way to "build your own Nissan," a dealer locator, and more information about key Nissan support services. Or if you'd prefer, call **1-800-NISSAN-3** for answers to specific questions about Versa® or any other Nissan vehicle. The Nissan names, logos, product names, feature names, and slogans are trademarks owned by or licensed to Nissan Motor Co. Ltd. and/or its North American subsidiaries. **Always wear your seat belt, and please don't drink and drive.** ©2014 Nissan North America, Inc.

This brochure is intended for general descriptive and informational purposes only. It is subject to change and does not constitute an offer, representation or warranty (express or implied) by Nissan North America, Inc. Interested parties should confirm the accuracy of any information in this brochure as it relates to a vehicle directly with Nissan North America, Inc., before relying on it to make a purchase decision. Nissan North America, Inc., reserves the right to make changes, at any time, without prior notice, in prices, colors, materials, equipment, specifications, and models and to discontinue models or equipment. Due to continuous product development and other pre- and post-production factors, actual vehicle, materials and specifications may vary from this brochure. Some vehicles shown with optional equipment. See the actual vehicle for complete accuracy. Availability and delivery times for particular models or equipment may vary. Specifications, options and accessories may differ in Hawaii, U.S. territories and other countries. For additional information on availability, options or accessories, see your Nissan dealer or contact Nissan North America, Inc.



And sign up for the latest news and updates on the 2015 Nissan Versa.®

or visit NissanUSA.com/versa

Los folletos de Nissan también están disponibles en español.

Para descargar el PDF, visita:

NissanUSA.com/folletos-espanol

And follow Nissan on:

