



Innovation
that excites

2014
PATHFINDER®

WELCOME TO THE 2014 NISSAN PATHFINDER® DIGITAL BROCHURE

Full of images, feature stories, and all the specification and trim level information you need to help select your Pathfinder.®

[Click here](#) to sign up for news and updates on the 2014 Nissan Pathfinder.®



WOULDN'T IT BE COOL IF_
YOUR SUV WAS MADE FOR
THE WAY YOU REALLY LIVE?

The world has changed. Shouldn't your SUV? From climbing hills to climbing in, Pathfinder® redefines it all. There's the all-new Hybrid, delivering an impressive range of 488 miles on a single tank,¹ while maintaining all the capability you expect from a Pathfinder.® Or choose the powerful V6, with the highest standard towing rating in its class.^{2,3} And on every Pathfinder,® you'll find a standard CVT transmission for seamless power and an available 4-Wheel Drive system with class-exclusive driver-selectable modes.³ Stretch out in the largest interior in its class,³ with a third row that's spacious and surprisingly easy to get into. And once the trail is behind you, an available class-exclusive Around View® Monitor helps you grab a parking space right out front.^{3,4} Welcome to the world as we know it. Welcome to the Next Gen SUV.



¹488-mile estimated range calculated using 2013 EPA Fuel Economy Estimate 25 MPG city multiplied by 19.5 gallon capacity, not yet EPA tested. Actual mileage may vary with driving conditions – use for comparison only.

²See Nissan Towing Guide and Owner's Manual for proper use. ³Ward's Large Cross Utility Market Segmentation. MY14 Pathfinder® and Pathfinder® Hybrid vs. 2013 competitors. ⁴Parking aid/convenience feature. Cannot completely eliminate blind spots or warn of moving objects. May not detect every object. Always check surroundings before moving vehicle. Not a substitute for proper backing procedures. Always turn to check what is behind you before backing up.



Enjoy 5-star accommodations, before you even get to the lodge. Pathfinder® surrounds you with premium comforts, including standard Tri-Zone Automatic Temperature Control and available heated and cooled front seats, heated 2nd-row seats, even an available class-exclusive heated steering wheel.¹ With available navigation featuring *Zagat Survey*® restaurant recommendations and live weather updates, plus an available dual memory seating system and a Bose® premium audio system, you've got luxury accommodations – without any reservations.^{2, 3, 4}

¹Ward's Large Cross/Utility Market Segmentation. MY14 Pathfinder® vs. 2013 Large Cross/Utility Class. ²Never program while driving. GPS mapping may not be detailed in all areas or reflect current road regulations. ³Required SiriusXM Satellite Radio, NavTraffic and NavWeather subscriptions sold separately after trial period. Installation costs, one-time activation fee, other fees and taxes will apply. NavTraffic available in select markets. Services available only to those 18 or older in the 48 contiguous states and D.C. Fees and programming subject to change. Subscriptions governed by Customer Agreement available at siriusxm.com. ©2013 Sirius XM Radio Inc. Sirius, XM and all related marks and logos are trademarks of Sirius XM Radio Inc. ⁴Tri-Zone operation requires compatible auxiliary media system. See Owner's Manual for details. Bose is a registered trademark of The Bose Corporation. Zagat Survey® is a registered trademark of Zagat Survey, LLC Ltd.

Nissan Pathfinder® Platinum shown in Almond Leather with optional equipment.

Click this link to see a short video on Pathfinder®'s capable 4WD system. Or go to bit.ly/nissan4wd



BECAUSE YOU HAVE A LOT MORE WORLD TO SEE.



Intuitive 4WD. With Pathfinder®'s All-Mode 4x4-i, you've got a system that's capable on-road and off. Designed to work with both V6 and Hybrid models, it's the only vehicle in its class with selectable driving modes.¹ You can choose full-time 2WD for maximum efficiency. Auto Mode constantly monitors conditions and adjusts the balance of power between front and rear wheels for best traction. Challenging conditions? 4WD Lock Mode is your choice. And when your travels take you on steeper paths, hill start assist helps prevent rollback when starting and driving away on an incline.



Balance of Power. The Advanced Drive-Assist™ Display shows how the intuitive 4WD system constantly adjusts power between the front and rear axles, helping to give you the available traction and control you need.

Nissan Pathfinder® Hybrid Platinum shown in Dark Slate with optional equipment.

¹Ward's Large Cross/Utility Market Segmentation. MY14 Pathfinder® vs. 2013 Large Cross/Utility Class. Cargo and load capacity limited by weight and distribution. Always secure all cargo. Heavy loading of the SUV with cargo, especially on the roof, will affect handling and stability of the vehicle.



BECAUSE EVERYONE SHOULD COME ALONG.

In Pathfinder,[®] capability goes way beyond taking on rugged conditions, it's conquering the real world you face every day. That means more than just seating for seven. It means seating for seven with best-in-class passenger room,¹ including a 2nd row that slides over five inches for stretch-out room and the only 3rd-row reclining seat in its class.^{1,2} And with premium features like an available Dual Panorama Moonroof and standard rear A/C, this is one time where one size fits all beautifully.

Nissan Pathfinder[®] Platinum shown in Almond Leather with optional equipment.

¹Ward's Large Cross/Utility Market Segmentation. MY14 Pathfinder[®] vs. 2013 Large Cross/Utility Class. ²Seats should not be in the reclined position when the vehicle is in motion.

Click this link to see a short video on Pathfinder®'s EZ Flex™ Seating System. Or go to bit.ly/ezflexseating

NISSAN EZ FLEX™ SEATING SYSTEM INNOVATION THAT GIVES EVERYONE AN OPEN INVITATION.

Wouldn't it be cool if getting to any seat was easy? With the innovative **EZ Flex™ Seating System**, the 2nd row glides and tilts forward for easy access to the spacious rear seat. And once you're in the 3rd row, you'll find it's exceptionally comfortable, thanks to class-exclusive reclining seats.^{1, 2, 3}

Pathfinder®'s family-friendly, too. With Pathfinder®'s **LATCH AND GLIDE™** technology, you can even tilt and slide the right side of the 2nd row with a child seat securely strapped in.¹



RECLINING
2ND AND 3RD ROW

SLIDING
2ND ROW



¹Slide forward function should not be performed with the CRS occupied. ²Ward's Large Cross/Utility Market Segmentation. MY14 Pathfinder® vs. 2013 Large Cross/Utility Class. ³Seats should not be in the reclined position when the vehicle is in motion. Cargo and load capacity limited by weight and distribution. Always secure all cargo.

MAKING ROOM FOR UNFORGETTABLE MOMENTS.



Fold Flat Rear Seats

Cargo? Pathfinder® makes easy work of it, with folding 2nd- and 3rd-row seats that create a virtually flat floor and up to 79.8 cubic feet of cargo space.



Under-floor Storage

There's also an under-floor storage area that keeps valuables out of sight. It's easily accessed even when the 3rd row is upright, for extra cargo space when you've got seven on board.



Power Liftgate

Easy loading comes at the touch of a finger. Pathfinder®'s available power liftgate can be opened from a button located on the liftgate, on the dashboard near the driver, or on your Intelligent Key.



GETTING A GREAT VIEW WHEREVER YOU LOOK.

Tri-Zone Entertainment. If you've ever taken a trip with kids, you probably know it's hard to please everyone. But with Pathfinder®'s available Tri-Zone Entertainment System, you actually can.¹ The rear monitors can play individually, giving a choice of DVDs, video games, photos and more that you can control from the audio system's 8" VGA screen. And with those in back wearing wireless headphones, you can adjust the 13-speaker Bose® audio system to play only in front, letting you enjoy your own choice of entertainment in perfect harmony.



Advanced Navigation. So much more than just maps, Pathfinder®'s available touch-screen Nissan Navigation System gives you live traffic and weather updates to keep you in the know. Hungry? There's even Zagat Survey® restaurant recommendations.^{2, 3}



iPod® Integration. Your music at your fingertips. Just plug in to Pathfinder®'s available USB input and control your iPod® through the audio system, including the remote controls mounted on the steering wheel. Rock on!⁴



Advanced Drive-Assist™ Display. From trip computer to 4WD torque distribution, the Advanced Drive-Assist™ Display serves up info right in front of you – helping to minimize time looking away. Its intuitive 3-D depth and tilt design help you take it all in quicker.

¹Tri-Zone operation requires compatible auxiliary media system. See Owner's Manual for details. ²Never program while driving. GPS mapping may not be detailed in all areas or reflect current road regulations. ³Required SiriusXM Satellite Radio, NavTraffic and NavWeather subscriptions sold separately after trial period. Installation costs, one-time activation fee, other fees and taxes will apply. NavTraffic available in select markets. Services available only to those 18 or older in the 48 contiguous states and D.C. Fees and programming subject to change. Subscriptions governed by Customer Agreement available at siriusxm.com. ©2013 Sirius XM Radio Inc. Sirius, XM and all related marks and logos are trademarks of Sirius XM Radio Inc. ⁴Driving is serious business and requires your full attention. Do not operate any devices connected to the USB or auxiliary audio input jack while driving. Bose® is a registered trademark of The Bose Corporation. iPod® is a registered trademark of Apple, Inc. All rights reserved. iPod not included. Zagat Survey® is a registered trademark of Zagat Survey, LLC Ltd.

Click this link to see a short video on Pathfinder®'s Tri-Zone Entertainment System. Or go to bit.ly/trizone

Click this link to see a short video on
Pathfinder's next-generation CVT.
Or go to bit.ly/smoothcvt

OUTSTANDING FUEL ECONOMY WITH BEST-IN-CLASS TOWING – THAT'S ONE GREAT CATCH.^{1,2}

Efficiency, brought to you by the Next-Generation Xtronic CVT.[®] With Pathfinder's class-exclusive Xtronic CVT[®] transmission, you have a virtually gearless wonder. It can hold the engine at the ideal rpm for the job, giving you a wave of power when you need it and running low rpm for quiet, efficient cruising when you don't. Proof? Best-in-class fuel economy in city (20 MPG), combined (22 MPG) and highway (26 MPG).^{1,3}

Power, Courtesy of a 3.5-L V6 Engine. Seven on board, a big beautiful boat in tow. This is the stuff that tests what an SUV is made of. Pathfinder[®] takes it on with 260 hp of 3.5-L V6 muscle and a CVT that knows the engine's sweet spot for the power you need, giving a standard 5,000 lbs. towing rating² – the highest in its class.¹ And if you tow frequently, consider the available Towing Package (see Specifications).

3.5-LITER
V6
260 HP
240 LB-FT
TORQUE
5,000 LBS. MAXIMUM
TOWING²

¹Ward's Large Cross/Utility Market Segmentation. MY14 Pathfinder[®] vs. 2013 Large Cross/Utility Class. ²See Nissan Towing Guide and Owner's Manual for proper use. ³EPA fuel economy estimate of 20 city, 26 highway and 22 combined MPG for MY14 Pathfinder[®] 2WD. Actual mileage may vary with driving conditions – use for comparison purposes only. Cargo and load capacity limited by weight and distribution. Always secure all cargo.

Click this link to see a short video on Pathfinder®'s advanced Hybrid system. Or go to bit.ly/pathfinderhybrid



NISSAN HYBRID TECHNOLOGY

INNOVATION THAT LOVES TO TRAVEL OFF THE BEATEN PATH.

27
MPG HWY¹

250
TOTAL HORSEPOWER

243
LB-FT TORQUE

488
MILES PER TANK²

The road to most hybrids is paved with compromise. Sure, you get better fuel economy, but it often comes with compromises on capability and comfort – and costs a lot more, too. How about a smarter solution? Pathfinder® Hybrid is thrifty from the word go, with auto-stop/start technology that can shut the engine down when you're at a stoplight, and starts instantaneously as you pull away. It's also efficient at higher speeds where it can "coast", reducing engine to idle and disconnecting from the transmission when power isn't needed. The result is an impressive range of 488 miles on a single tank of gas² and up to 27 MPG highway.¹ A supercharged 4-cylinder engine combined with an electric motor provides strong acceleration, while available All-Mode 4x4-i 4WD gives the go-anywhere capability you expect from a Pathfinder.® And with a rear-mounted battery pack that's smaller and slimmer than other hybrids, there's virtually no loss of rear leg room or cargo space. Pathfinder® Hybrid's even designed to be affordable – another road that most other hybrids don't like to travel.



Pathfinder®'s Advanced Drive Assist™ Display lets you monitor the power flow of the electric motor and the gas engine. You can also track MPG history and even learn how to be a more efficient driver. For the big-screen experience, you can view Hybrid information on the available Nissan Navigation System's 8" VGA display.^{3,4}



Nissan Pathfinder® Hybrid Platinum shown in Moonlight White with optional equipment.

Pathfinder® Hybrid will have late and limited availability. Please see your dealer for details.

¹Targeted 2014 Pathfinder® Hybrid EPA Fuel Economy Estimate of 27 highway MPG. EPA data not available at time of printing. Actual mileage may vary with driving conditions – use for comparison purposes only. ²488-mile estimated range calculated using 2013 EPA Fuel Economy Estimate 25 MPG city multiplied by 19.5 gallon capacity, not yet EPA tested. Actual mileage may vary with driving conditions – use for comparison only. ³Driving is serious business and requires your full attention. Even with Advanced Drive-Assist Display, only use phone or other communication devices when safe. ⁴Never program while driving. GPS mapping may not be detailed in all areas or reflect current road regulations.

Click this link to see a short video on Pathfinder®'s available Around View® Monitor.¹ Or go to bit.ly/pathfinderavm

NISSAN AROUND FOUR CAMERAS



What if parallel parking was easier? A rearview monitor is great when backing up – but when it comes to parking, it's nice to see more than just what's behind you. That's why Pathfinder® offers the class-exclusive available Around View® Monitor.^{1,3} Four cameras give you a virtual 360° bird's-eye view of your vehicle,² with selectable split-screen close-ups of the front, rear, and curbside views, so you can get a better look. Now that's smart.

¹Parking aid/convenience feature. Cannot completely eliminate blind spots. May not detect every object and does not warn of moving objects. Always check surroundings before moving vehicle. Not a substitute for proper backing procedures. Always turn to check what is behind you before backing up. ²Virtual composite 360° view. ³Ward's Large Cross/Utility Market Segmentation. MY14 Pathfinder® and Pathfinder® Hybrid vs. 2013 competitors.

VIEW® MONITOR¹ ONE 360° VIEW²

Forget the tennis ball. In Drive, the display gives you both a front and overhead view, so you can pull all the way into your spot (or garage) – but not too far.

CAMERA

1

CAMERA

4

CAMERA

2



Complete the picture. Located under your driver's side mirror, this camera helps round out your virtual 360° birds-eye view whether you're in Drive or Reverse.²

Don't scratch your wheels. In Drive or Reverse, you can push the camera button to switch out the overhead for a side view. A great help for seeing how close you are to the curb.

CAMERA

3

Get yourself hitched. In Reverse, the display helps you see what's directly behind you, while the overhead view helps with shorter objects otherwise hidden below your window. Perfect when hooking Pathfinder® up to a trailer.

NISSAN SAFETY SHIELD® PHILOSOPHY

INNOVATION THAT LOOKS OUT FOR YOU.

Wouldn't it be cool if you had the confidence you need for every part of your drive? The Nissan Safety Shield technologies are a comprehensive approach to safety that guide the engineering and development of every vehicle we make. By keeping an eye on your vehicle's systems and the surroundings, assisting in handling unexpected situations, and helping to keep you safe in the unfortunate event of an accident, the Nissan Safety Shield technologies are our way of looking out for you and yours.

MONITOR

Smart technologies help monitor conditions. Like a rearview camera that helps you see something behind you, or a system that helps ensure you're travelling on properly inflated tires.

Tire Pressure Monitoring System with Available Easy-Fill Tire Alert^{1,2}
Lets you know when a tire is low. And Easy-fill Tire Alert takes the guesswork out of filling your tires, with a beep of the horn when you've reached the correct pressure.

Available Smart Auto Headlights **Available RearView Monitor⁴**

Available Around View® Monitor³ **Available Rear Sonar System⁵**

RESPOND

Whether you need to hit the brakes hard or maneuver around an unexpected obstacle, these standard technologies help you respond to a potentially harmful situation.

Vehicle Dynamic Control helps you maintain your steered path.⁶

Traction Control System helps reduce wheelspin in low-traction situations.

Anti-lock Braking System helps you maintain steering control around obstacles while braking heavily.

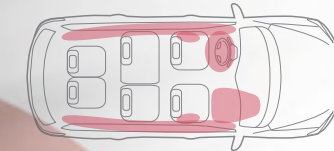
Electronic Brake force Distribution sends extra force to the rear brakes when you have additional weight of passengers or cargo in the back.

Brake Assist helps apply maximum braking force if it detects hard braking and senses you are in an emergency situation.



PROTECT

When a collision is unavoidable, Nissan's Zone Body construction helps absorb the impact while the advanced seat belt and air bag systems help protect passengers.



6 STANDARD AIR BAGS⁷

Nissan Advanced Air Bag System with dual-stage supplemental front air bags with seat-belt and occupant-classification sensors⁷

Front seat-mounted side-impact supplemental air bags⁷

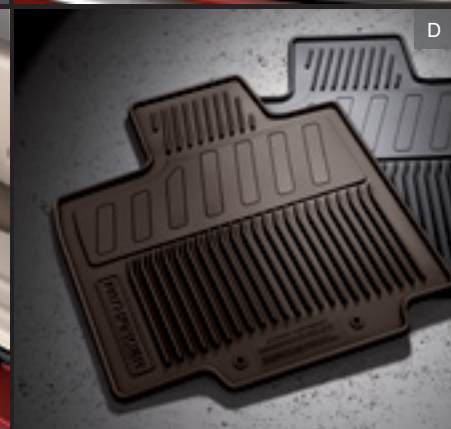
Roof-mounted curtain side-impact supplemental air bags with rollover sensor⁷

LATCH System (Lower Anchors and Tethers for Children)

snuggly kids® Nissan safety engineers have dedicated thousands of hours to evaluating hundreds of child restraints in Nissans. The result: An industry first, The Snuggly Kids® Child Safety Seat Fit Guide. This guide lists child seats that fit the rear seats of Nissan vehicles, as well as offers invaluable tips on correct installation. Look for the latest Fit Guide at NissanUSA.com/SnugglyKids.

Click this link to see a short video on how Snuggly Kids® helps you find the right CRS for your Nissan.
Or go to bit.ly/NissanSnugglyKids

Image is for illustrative purposes only and actual coverage may differ. ¹Vehicle must be on for the Easy-Fill Tire Alert to operate. ²Tire Pressure Monitoring System is not a substitute for regular tire pressure checks. ³Parking aid/convenience feature. Cannot completely eliminate blind spots. May not detect every object and does not warn of moving objects. Always check surroundings before moving vehicle. Not a substitute for proper backing procedures. Always turn to check what is behind you before backing up. ⁴Parking aid/convenience feature. Cannot completely eliminate blind spots or warn of moving objects. May not detect every object. Always check surroundings before moving vehicle. Not a substitute for proper backing procedures. Always turn to check what is behind you before backing up. ⁵The Rear Sonar System is a convenience, but is not a substitute for proper backing procedures. Always turn and check that it is safe to do so before backing up. May not detect every object behind you. ⁶VDC, which should remain on when driving except when freeing the vehicle from mud or snow, cannot prevent accidents due to abrupt steering, carelessness, or dangerous driving techniques. Always drive safely. ⁷Air bags are only a supplemental restraint system; always wear your seat belt. Even with the occupant-classification sensor, rear-facing child restraints should not be placed in the front-passenger's seat. Also, all children 12 and under should ride in the rear seat properly secured in child restraints, booster seats, or seat belts according to their size. Air bags will only inflate in certain accidents; see your Owner's Manual for more details.



GENUINE NISSAN ACCESSORIES.

Every Genuine Nissan Accessory is: custom-fit, custom-designed and durability-tested; backed by Nissan's 3-year/36,000-mile (whichever occurs first) limited warranty; and can be financed when installed by dealer at time of purchase.¹

A. Auto-dimming Rearview Mirror with HomeLink® and Compass
Brights on behind you? Here's the answer.

B. Cargo Area Protector²
Use your cargo area, don't abuse it.

C. Illuminated Kick Plates
For a grand entry, every time.

D. All-season Floor Mats (4-piece set)
Happiness is carpet that looks brand new.

E. Dual Head Restraint DVD Monitors
Happy campers are quiet campers.

F. Remote Engine Start System³
Heat or cool your Pathfinder® before you get in.

G. Roof Rail Crossbars⁴
Great for bringing along your skis or bike.

H. Splash Guards
Unexpected mud bath? No problem.

Additional Accessories:

- Fog Lights
- Under-floor Storage Dividers
- Rear Cargo Cover
- Cargo Net
- Interior Accent Lighting
- Towing Accessories⁵
- Hatch Tent
- Stainless Steel Rear Bumper Protector
- And More

¹Covered by Nissan's Limited Warranty on Genuine Nissan Accessories for the longer of 12 months/12,000 miles (whichever occurs first) or the remaining period under the 3-year/36,000-mile (whichever occurs first) Nissan New Vehicle Limited Warranty. Terms and conditions apply. See Warranty Information Booklet for details. ²Cargo and load capacity limited by weight and distribution. Always secure all cargo. ³State laws may apply; review local laws before using. ⁴Heavy loading of the SUV with cargo, especially on the roof, will affect handling and stability of the vehicle. ⁵See Nissan Towing Guide and Owner's Manual for proper use. HomeLink® is a registered trademark of Johnson Controls Technology Company.

TAKE READY TO THE NEXT LEVEL.

Click this link to see a short videos on Genuine Nissan Accessories in action. Or go to bit.ly/gnavideos_pathfinder



For more information and to shop online for Genuine Nissan Accessories, go to parts.NissanUSA.com.

Nissan Pathfinder® SV shown in Cayenne Red with Fog Lights, Splash Guards, Hood Protector, Side-window Deflectors and Roof Rail Crossbars.

CHOOSE YOUR TRIM LEVEL

V6 ENGINE

S

260 hp 3.5-liter V6 engine, Xtronic CVT® (Continuously Variable Transmission), Available All-Mode 4x4-i intuitive 4WD system, hill start assist, 18" aluminum-alloy wheels, 7-passenger seating capacity, EZ Flex™ Seating System, Tri-Zone Automatic Temperature Control (ATC), Advanced Drive-Assist™ Display, remote keyless entry, Push Button Ignition, power windows, AM/FM/in-dash 6-CD audio system with six speakers, MP3/WMA CD playback capability, auxiliary audio input jack,¹ illuminated steering wheel-mounted audio controls, Nissan Advanced Air Bag System, Vehicle Dynamic Control (VDC) with Traction Control System (TCS), Tire Pressure Monitoring System (TPMS) with Easy-Fill Tire Alert



SV

INCLUDES S EQUIPMENT PLUS:

8-way power adjustable driver's seat, Smart Auto Headlights, roof rails, Information Center with 7" QVGA color monitor, RearView Monitor, Rear Sonar System, individual tire pressure display, Bluetooth® Hands-free Phone System,² Nissan Intelligent Key,[®] power windows with front one-touch auto-up/down, variable intermittent speed-sensitive flat-blade windshield wipers, dual illuminated visor vanity mirrors, leather-wrapped steering wheel and shift knob, AM/FM/CD audio system, USB connection port,¹ auxiliary audio/video input jacks,¹ SiriusXM Satellite Radio³

KEY AVAILABLE PACKAGE: • Trailer Tow Package



SL

INCLUDES SV EQUIPMENT PLUS:

Leather-appointed seats and door trim, fog lights, chrome body side moldings, power liftgate, heated outside mirrors with reverse tilt-down feature, Remote Engine Start System, auto-dimming rearview mirror, HomeLink® Universal Transceiver, digital compass, welcome lighting, heated front and rear seats, driver's seat and outside mirrors position memory, driver's seat power lumbar support, 4-way power adjustable passenger's seat, wood-tone trim, stainless steel kick plates

KEY AVAILABLE PACKAGE: • Trailer Tow Package • Premium Package • Tech Package



Platinum

INCLUDES SL EQUIPMENT PLUS:

20" Aluminum-alloy wheels, tow hitch receiver, Nissan Hard Drive Navigation System with 8" VGA touch-screen monitor and voice recognition, NavTraffic and NavWeather,³ Zagat Survey® restaurant reviews, Around View® Monitor, Bose® audio system with 13 speakers, DVD video playback capability, streaming audio via Bluetooth® wireless technology,² 120-volt AC power outlet, climate-controlled front seats, heated steering wheel, power-tilt/telescoping steering column, steering-wheel position memory

KEY AVAILABLE PACKAGE: • Premium Package



HYBRID

SV

INCLUDES V6 SV EQUIPMENT PLUS:

2.5-liter 4-cylinder SuperCharged engine and electric motor utilizing Intelligent Dual Clutch System and lithium-ion battery with 250 hp and 243 lb-ft of torque, electrically driven regenerative brakes, LED taillights

KEY AVAILABLE PACKAGE: • Trailer Tow Package



Screen image is subject to change. Actual display in vehicle may vary.

SL

INCLUDES SV EQUIPMENT PLUS:

Leather-appointed seats and door trim, fog lights, chrome body side moldings, power liftgate, heated outside mirrors with reverse tilt-down feature, Remote Engine Start System, auto-dimming rearview mirror, HomeLink® Universal Transceiver, digital compass, welcome lighting, heated front and rear seats, driver's seat and outside mirrors position memory, driver's seat power lumbar support, 4-way power adjustable passenger's seat, wood-tone trim, stainless steel kick plates

KEY AVAILABLE PACKAGE: • Trailer Tow Package • Premium Package • Tech Package



Platinum

INCLUDES SL EQUIPMENT PLUS:

20" Aluminum-alloy wheels, tow hitch receiver, Nissan Hard Drive Navigation System with 8" VGA touch-screen monitor and voice recognition, NavTraffic and NavWeather,³ Zagat Survey® restaurant reviews, Around View® Monitor, Bose® audio system with 13 speakers, DVD video playback capability, streaming audio via Bluetooth® wireless technology,² 120-volt AC power outlet, climate-controlled front seats, heated steering wheel, power-tilt/telescoping steering column, steering-wheel position memory

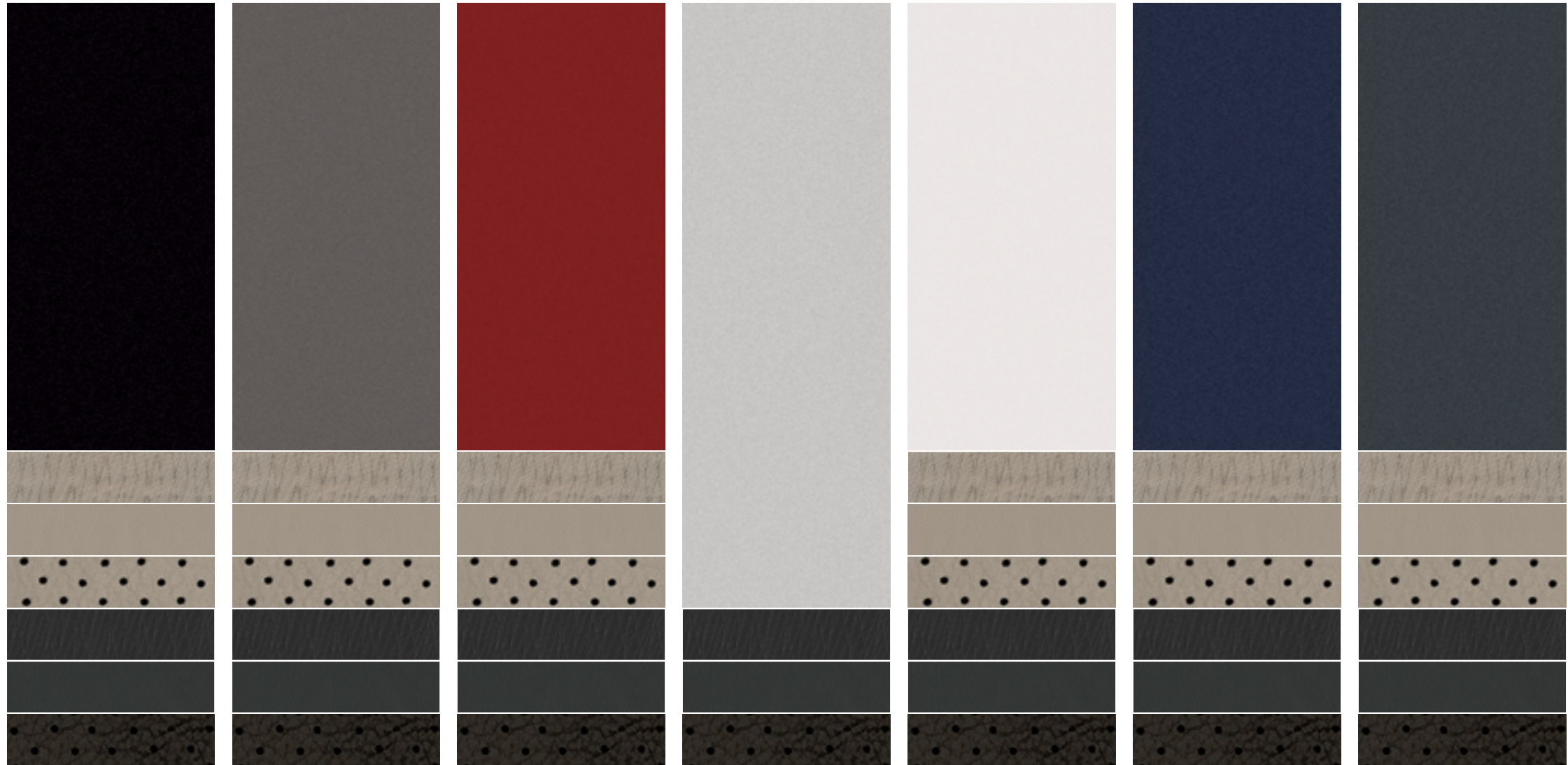
KEY AVAILABLE PACKAGE: • Premium Package



Images may show additional available equipment. ¹Driving is serious business and requires your full attention. Do not operate any devices connected to the USB or auxiliary audio input jack while driving. ²Availability of specific features is dependent upon the phone's Bluetooth® support. Please refer to your phone Owner's Manual for details. Bluetooth word mark and logos are owned by Bluetooth SIG, Inc., and any use of such marks by Nissan is under license. ³Required SiriusXM Satellite Radio, NavTraffic and NavWeather subscriptions sold separately after trial period. Installation costs, one-time activation fee, other fees and taxes will apply. NavTraffic available in select markets. Services available only to those 18 or older in the 48 contiguous states and D.C. Fees and programming subject to change. Subscriptions governed by Customer Agreement available at siriusxm.com. ©2013 Sirius XM Radio Inc. Sirius, XM and all related marks and logos are trademarks of Sirius XM Radio Inc. Bose® is a registered trademark of The Bose Corporation. HomeLink® is a registered trademark of Johnson Controls Technology Company. iPod® is a registered trademark of Apple, Inc. All rights reserved. iPod not included. Zagat Survey® is a registered trademark of Zagat Survey LLC, Ltd.

CHOOSE YOUR COLOR

You've decided which Pathfinder® you want, now here comes the best part: deciding what it's going to look like. Select your favorite color and then pick from the available interiors based on the model of your choice.



■ Standard

Nissan has taken care to ensure that the color swatches presented here are the closest possible representations of actual vehicle colors. Swatches may vary slightly due to the printing process and whether viewed in daylight, fluorescent or incandescent light. Please see the actual colors at your local Nissan dealer.

Super Black KH3

Mocha Stone CAL

Cayenne Red NAH

Brilliant Silver K23

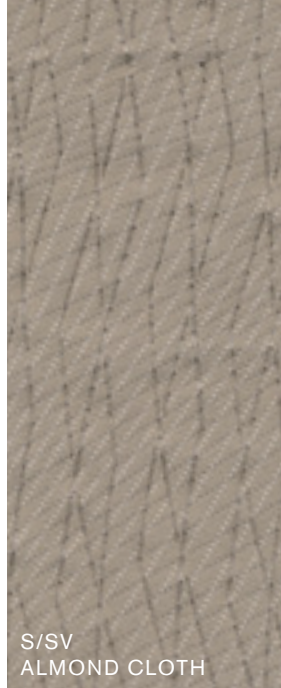
Moonlight White QAA

Arctic Blue Metallic RBG

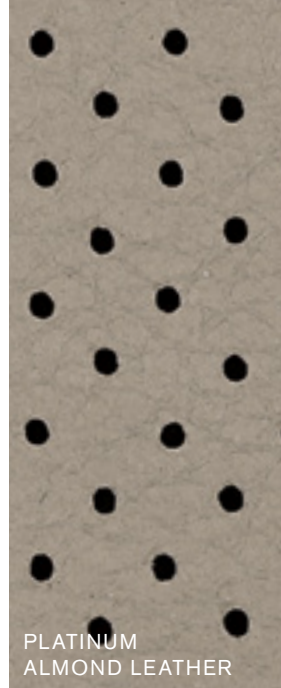
Dark Slate K50

	S	SV	SL	Platinum
ALMOND CLOTH	■	■		
ALMOND LEATHER			■	■
CHARCOAL CLOTH	■	■		
CHARCOAL LEATHER			■	■

CHOOSE YOUR FABRIC



S/SV
ALMOND CLOTH



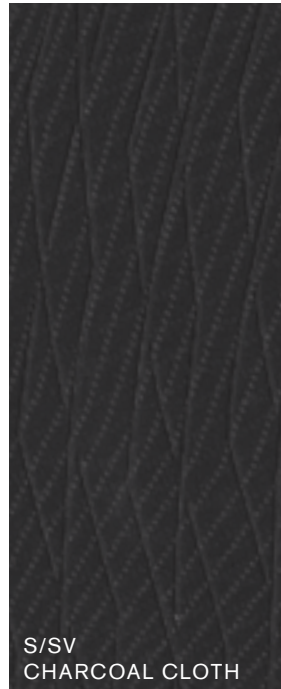
PLATINUM
ALMOND LEATHER



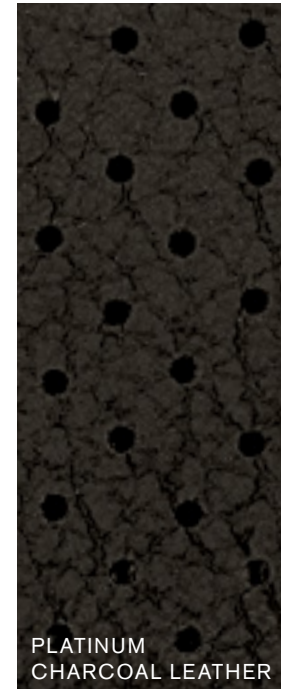
SL
CHARCOAL LEATHER



SL
ALMOND LEATHER



S/SV
CHARCOAL CLOTH



PLATINUM
CHARCOAL LEATHER



SPECIFICATIONS

Engine	S ¹	SV	SL	Platinum
3.5-liter DOHC 24-valve V6 engine	■	■	■	■
— Horsepower – 260 hp @ 6,400 rpm				
— Torque – 240 lb-ft @ 4,400 rpm				
— Emissions – LEV2 ULEV				
2.5-liter DOHC 16-valve 4-cylinder SuperCharged engine and electric motor utilizing Intelligent Dual Clutch System and lithium-ion battery		■ ²	■ ²	■ ²
— Hybrid System Net Power – 250 hp				
— Engine Horsepower – 230 hp @ 5,600 rpm				
— Engine Torque – 243 @ 3,600 rpm				
— Electric Motor Power – 15 kW				
— Emissions – LEV2 ULEV				
Continuously Variable Valve Timing Control System (CVTCS) on intake valves	■	■	■	■
Variable induction system	■	■	■	■
Nissan Direct Ignition system with iridium-tipped spark plugs	■	■	■	■
Electronic drive-by-wire throttle	■	■	■	■

Drivetrain	S ¹	SV	SL	Platinum
Front engine/Front-Wheel Drive	■	■	■	■
All-Mode 4x4-i intuitive 4WD system	□	□	□	□
Hill start assist	■	■	■	■
Xtronic CVT [®] (Continuously Variable Transmission)	■	■	■	■

Brakes	S ¹	SV	SL	Platinum
4-wheel vented disc brakes	■	■	■	■
Anti-lock Braking System (ABS)	■	■	■	■
Electronic Brake force Distribution (EBD)	■	■	■	■
Brake Assist	■	■	■	■
Electrically driven regenerative brakes		■ ²	■ ²	■ ²

Suspension/Steering	S ¹	SV	SL	Platinum
Independent strut front suspension	■	■	■	■
Independent multi-link rear suspension	■	■	■	■
Dual Flow Path [®] shock absorbers	■	■	■	■
Front and rear stabilizer bars	■	■	■	■
Electronic hydraulic power-assisted speed-sensitive steering	■	■	■	■

Wheels/Tires	S ¹	SV	SL	Platinum
18" x 7.5" aluminum-alloy wheels	■	■	■	
20" x 7.5" aluminum-alloy wheels				■
P235/65R18 all-season tires	■	■	■	
P235/55R20 all-season tires				■

Exterior Features	S ¹	SV	SL	Platinum
Smart Auto Headlights		■	■	■
Fog lights			■	■
LED taillights		■ ²	■ ²	■ ²
Roof rails		■	■	■
Front tow hook		■	■	■
Tow hitch receiver with 7-pin wiring harness		TT	TT P1	■
Dual power heated outside mirrors with reverse tilt-down feature			■	■
Chrome body side moldings			■	■
Dual Panorama Moonroof			P1	P2
Front UV-reducing solar glass and rear privacy glass	■	■	■	■

Comfort/Convenience	S ¹	SV	SL	Platinum
Advanced Drive-Assist [™] Display	■	■	■	■
Information Center with 7" QVGA color monitor		■	■	
Nissan Hard Drive Navigation System with 8" VGA touch-screen monitor and voice recognition			T	■
NavTraffic and NavWeather provided by SiriusXM [®]			T	■
Zagat Survey [®] restaurant reviews			T	■
Rear Sonar System		■	■	■
RearView Monitor		■	■	
Around View [®] Monitor				■

Comfort/Convenience (continued)	S ¹	SV	SL	Platinum
Push Button Ignition	■	■	■	■
Remote keyless entry	■			
Nissan Intelligent Key [®]		■	■	■
Power liftgate with position memory			■	■
Remote Engine Start System			■	■
Bluetooth [®] Hands-free Phone System		■	■	■
HomeLink [®] Universal Transceiver			■	■
Tri-Zone Automatic Temperature Control (ATC)	■	■	■	■
In-cabin microfilter	■	■	■	■
Power door locks with auto-locking feature	■	■	■	
Power windows with driver's one-touch auto-down	■			
Power windows with front one-touch auto-up/down		■	■	■
Cruise control with steering wheel-mounted controls	■	■	■	■
Variable intermittent flat-blade windshield wipers	■			
Variable intermittent speed-sensitive flat-blade windshield wipers	■			■
Intermittent rear window wiper	■	■	■	■
Auto-dimming rearview mirror			■	■
Digital compass (integrated in-mirror on SL)			■	■
Front map lights	■	■	■	■
Rear reading lights	■	■	■	■
Welcome lighting			■	■
Two 12-volt DC power outlets	■			
Four 12-volt DC power outlets		■	■	■
120-volt AC power outlet			P1	■
Sun visors with vanity mirrors and extensions	■			
Sun visors with illuminated vanity mirrors and extensions		■	■	■
Tilt/telescoping steering column	■	■	■	
Power tilt/telescoping steering column				■
Front seatback map pockets	■	■	■	■
Overhead sunglasses holder	■	■	■	■
Eight cup holders and six bottle holders	■	■	■	■
Cargo area tie-downs (eight)	■	■	■	■
Cargo area under-floor storage	■	■	■	■

- Standard
- Optional
- TT Part of SV/SL Trailer Tow Package

- P1 Part of SL Premium Package
- T Part of SL Tech Package
- P2 Part of Platinum Premium Package

¹Not available in Hybrid models. ²Available in Hybrid models only. ³Required SiriusXM Satellite Radio, NavTraffic and NavWeather subscriptions sold separately after trial period. Installation costs, one-time activation fee, other fees and taxes will apply. NavTraffic available in select markets. Services available only to those 18 or older in the 48 contiguous states and D.C. Fees and programming subject to change. Subscriptions governed by Customer Agreement available at siriusxm.com. ©2013 Sirius XM Radio Inc. Sirius, XM and all related marks and logos are trademarks of Sirius XM Radio Inc. The Bluetooth[®] word mark and logos are owned by Bluetooth SIG, Inc. and any use of such marks by Nissan is under license. Bose[®] is a registered trademark of The Bose Corporation. HomeLink[®] is a registered trademark of Johnson Controls Technology Company. iPod[®] is a registered trademark of Apple, Inc. All rights reserved. iPod not included. Zagat Survey[®] is a registered trademark of Zagat Survey LLC, Ltd.

SPECIFICATIONS

Seating/Appointments	S'	SV	SL	Platinum
6-way manual adjustable driver's seat with manual lumbar	■			
8-way power adjustable driver's seat with manual lumbar		■		
8-way power adjustable driver's seat with power lumbar			■	■
Driver's seat and outside mirrors position memory			■	■
Steering-wheel position memory				■
4-way power adjustable front-passenger's seat			■	■
EZ Flex® Seating System with 2nd-row 60/40 split fold-flat bench seat featuring LATCH AND GLIDE® and 3rd-row 50/50 split fold-flat reclining bench seat	■	■	■	■
Cloth seat trim	■	■		
Leather-appointed seats and door trim			■	■
Heated front seats			■	
Climate-controlled front seats (heated and cooled)				■
Heated rear seats			■	■
Heated steering wheel				■
Leather-wrapped steering wheel and shift knob		■	■	■
Wood-tone trim			■	■
Stainless steel kick plates			■	■

Audio/Entertainment	S'	SV	SL	Platinum
AM/FM/CD audio system with in-dash 6-CD changer	■			
AM/FM/CD audio system		■	■	
Bose® audio system with AM/FM/CD			P1 T	■
Tri-Zone Entertainment System with dual head restraint-mounted 7" monitors, remote control and two wireless headphones				P2
SiriusXM Satellite Radio³		■	■	■
MP3/WMA CD playback capability	■	■	■	■
DVD video playback capability			T	■
Auxiliary audio input jack	■			
Auxiliary audio/video input jacks		■	■	■
Rear auxiliary audio/video input jacks				P2
USB connection port for iPod® interface and other compatible devices		■	■	■

Audio/Entertainment (continued)	S'	SV	SL	Platinum
Streaming audio via Bluetooth® wireless technology			T	■
Six speakers	■	■	■	
13 Speakers, including Bose® Acoustic Waveguide technology			P1 T	■
Radio Data System (RDS)		■	■	■
Speed-sensitive volume control		■	■	■
Illuminated steering wheel-mounted audio controls	■	■	■	■

Safety/Security	S'	SV	SL	Platinum
Nissan Advanced Air Bag System with dual-stage supplemental front air bags with seat belt and occupant-classification sensors	■	■	■	■
Driver and front-passenger seat-mounted side-impact supplemental air bags	■	■	■	■
Roof-mounted curtain side-impact supplemental air bags with rollover sensor for outboard occupant head protection for all three rows	■	■	■	■
Vehicle Dynamic Control (VDC) with Traction Control System (TCS)	■	■	■	■
Active Brake Limited Slip (ABLS)	■	■	■	■
3-point ALR/ELR passenger seat belt system (ELR for driver)	■	■	■	■
Front seat belts with pretensioners and load limiters	■	■	■	■
Adjustable front, outboard 2nd- and 3rd-row head restraints	■	■	■	■
LATCH System (Lower Anchors and Tethers for Children)	■	■	■	■
Zone Body construction with front and rear crumple zones	■	■	■	■
Hood-buckling creases, energy-absorbing steering column and pipe-style steel side-door guard beams	■	■	■	■
Tire Pressure Monitoring System (TPMS) with Easy-Fill Tire Alert	■			
Tire Pressure Monitoring System (TPMS) with individual tire pressure display and Easy-Fill Tire Alert		■	■	■
Nissan Vehicle Immobilizer System	■	■	■	■
Vehicle Security System	■	■	■	■

PACKAGES

T Tow Package

Tow hitch receiver with 7-pin wiring harness

P1 SL Premium Package

Dual Panorama Moonroof

Tow hitch receiver with 7-pin wiring harness

Bose® audio system with AM/FM/CD

13 Speakers, including Bose® Acoustic Waveguide technology

120-volt AC power outlet

T SL Tech Package

Nissan Hard Drive Navigation System with 8" VGA touch-screen monitor and voice recognition

NavTraffic and NavWeather provided by SiriusXM®

Zagat Survey® restaurant reviews

Bose® audio system with AM/FM/CD

DVD video playback capability

13 Speakers, including Bose® Acoustic Waveguide technology

Streaming audio via Bluetooth® wireless technology

Integrated in-mirror digital compass is deleted with this package.

P2 Platinum Premium Package

Dual Panorama Moonroof

Tri-Zone Entertainment System with dual head restraint-mounted 7" monitors, remote control and two wireless headphones

Rear auxiliary audio/video input jacks

DIMENSIONS/CAPACITIES/WEIGHTS/MPG

Dimensions – Inches

Exterior	
Wheelbase	114.2
Overall length	197.2
Overall width	77.2
Overall height without roof rack	69.6
Overall height with roof rack	70.2
Track width (front/rear)	65.7

Interior (front/2nd row/3rd row)

Head room without moonroof	42.2/39.4/37.8
Head room with moonroof	41.1/38.5/36.5
Leg room	42.3/41.7/30.7
Hip room	56.8/56.1/42.0
Shoulder room	60.7/60.4/57.1

Cargo

Maximum (length/width/height)	78.9/45.9/31.4
-------------------------------	----------------

Capacities

Seating capacity	7
Interior passenger volume (cu. ft.)	157.8
Cargo capacity with 2nd row upright, 3rd row upright (cu. ft.)	16.0
Cargo capacity with 2nd row upright, 3rd row folded flat (cu. ft.)	42.4–47.8
Cargo capacity with 2nd row folded flat, 3rd row folded flat (cu. ft.)	79.8
Fuel tank (gals.)	19.5
Maximum towing capacity (lbs.)	V6 Hybrid
	5,000 3,500

Curb Weights – Lbs.

V6 Base Total	S	SV	SL	Platinum
2WD	4,168	4,189	4,223	4,345
4WD	4,309	4,330	4,364	4,486

Hybrid Base Total	S	SV	SL	Platinum
2WD	—	4,417	4,451	4,573
4WD	—	4,558	4,592	4,714

2014 EPA Fuel Economy Estimates

City/Hwy/Combined MPG	V6	Hybrid
2WD	20/26/22	25/27/26
4WD	19/25/21	25/27/26

Targeted 2014 Pathfinder® Hybrid EPA Fuel Economy Estimates. EPA data not available at time of printing.

Actual mileage may vary with driving conditions – use for comparison only.

BUYING/OWNING

Nissan Motor Acceptance Corporation. Whether you're buying or leasing, you'll find attractive rates and flexible terms to make your purchase more accessible.

College Grad Program. Ask about our special new vehicle pricing available to individuals up to two years after graduation.

Active and Reserve US Military Program. Ask about our fixed discount on new vehicle pricing available to those serving our country.

New Vehicle Limited Warranties. Protection for your new Nissan includes 3-year/36,000-mile (whichever occurs first) basic coverage and 5-year/60,000-mile (whichever occurs first) powertrain coverage. Terms, conditions and exclusions apply. See Warranty Information Booklet for complete details.

Security+Plus®. For additional peace of mind, a variety of extended service plans lets you tailor the coverage to your driving habits.

Maintenance+Plus®. This extended plan ensures your Nissan will receive up to 17 different services and over 33 different inspection items at each visit, using the most up-to-date diagnostic equipment available.

Genuine Nissan Parts. When it comes time for service, any necessary replacement parts will be made using Genuine Nissan new or remanufactured parts, or Nissan-approved parts. And they're the only parts to carry Nissan's factory-backed limited warranty.

Nissan Mobility Assist. This program offers reimbursements toward the purchase and installation of certain mobility assistance products for program-eligible Nissans. Go to NissanUSA.com/mobility for more info.

Nissan's environmental action plan focuses on several key areas. Increasing production of Zero Emission vehicles, including the 100% electric LEAF.® Improving fuel efficiency through our PUREDRIVE™ measures. And reducing the environmental impact of manufacturing, as seen at our new, energy-efficient, low-emissions paint plant in Tennessee. For more information, log on to NissanUSA.com/green



At NissanUSA.com, you'll find virtual product demonstrations, a way to "build your own Nissan," a dealer locator, and more information about key Nissan support services. Or if you'd prefer, call **1-800-NISSAN-3** for answers to specific questions about Pathfinder® or any other Nissan vehicle. The Nissan names, logos, product names, feature names, and slogans are trademarks owned by or licensed to Nissan Motor Co. Ltd. and/or its North American subsidiaries. **Tread Lightly!® Please. Always wear your seat belt, and please don't drink and drive.** ©2013 Nissan North America, Inc. '14 Pathfinder.® 1414358-N-6/13-150M-CGI

This brochure is intended for general descriptive and informational purposes only. It is subject to change and does not constitute an offer, representation or warranty (express or implied) by Nissan North America, Inc. Interested parties should confirm the accuracy of any information in this brochure as it relates to a vehicle directly with Nissan North America, Inc., before relying on it to make a purchase decision. Nissan North America, Inc., reserves the right to make changes, at any time, without prior notice, in prices, colors, materials, equipment, specifications, and models and to discontinue models or equipment. Due to continuous product development and other pre- and post-production factors, actual vehicle, materials and specifications may vary from this brochure. Some vehicles shown with optional equipment. See the actual vehicle for complete accuracy. Availability and delivery times for particular models or equipment may vary. Specifications, options and accessories may differ in Hawaii, U.S. territories and other countries. For additional information on availability, options or accessories, see your Nissan dealer or contact Nissan North America, Inc.

Sign up for the latest news and updates on the 2014 Nissan Pathfinder.®™

or visit NissanUSA.com/pathfinder

Los folletos de Nissan también están disponibles en español.

Para descargar el PDF, visita:

NissanUSA.com/folletos-espanol

And follow Nissan on: