

2016

# ODYSSEY





**Built with your loved ones in mind.**



Odyssey Touring Elite<sup>®</sup> shown in Obsidian Blue Pearl.



Odyssey Touring Elite shown in Obsidian Blue Pearl.

The Odyssey delivers groundbreaking technology and conveniences that keep your family connected and comfortable. Top it all off with sleek, modern styling, and you've got a minivan that really hits it home.

THE 2016 ODYSSEY





DESIGN

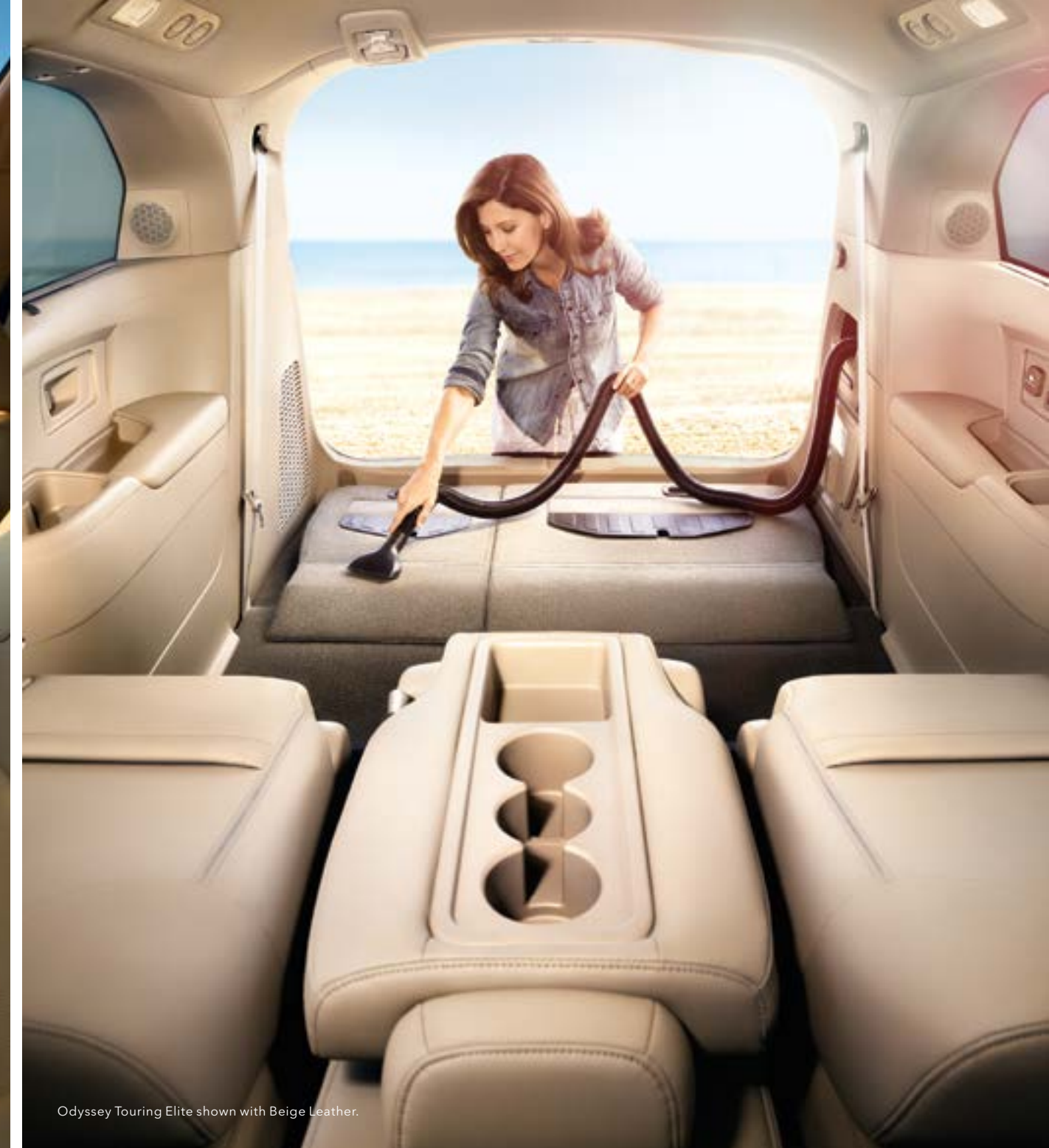
The Odyssey didn't get to where it is today by standing still. Our signature family vehicle continues to deliver innovative technology, tasteful styling and impressive performance.



Fun for all.



Odyssey Touring Elite shown with Beige Leather.



Odyssey Touring Elite shown with Beige Leather.

INTERIOR DESIGN

Stunning technology. Cutting-edge conveniences. With a luxurious interior and so many trailblazing tools at your disposal, the Odyssey is more than just a minivan. It's your mobile command center.





Honda LANEWATCH™<sup>1</sup>



BLIND SPOT INFORMATION SYSTEM (BSI)<sup>2</sup>



Technology that works for you.

Odyssey Touring shown with Beige Leather.

TECHNOLOGY

**Honda LANEWATCH<sup>1</sup>**

Signal right and a small camera displays live video from your passenger-side mirror, helping make it easier to change lanes (EX, EX-L, Touring).

**BLIND SPOT INFORMATION SYSTEM (BSI)<sup>2</sup>**

Touring Elite models come equipped with sensors that alert you when they detect a vehicle in adjacent lanes to the rear of the Odyssey.

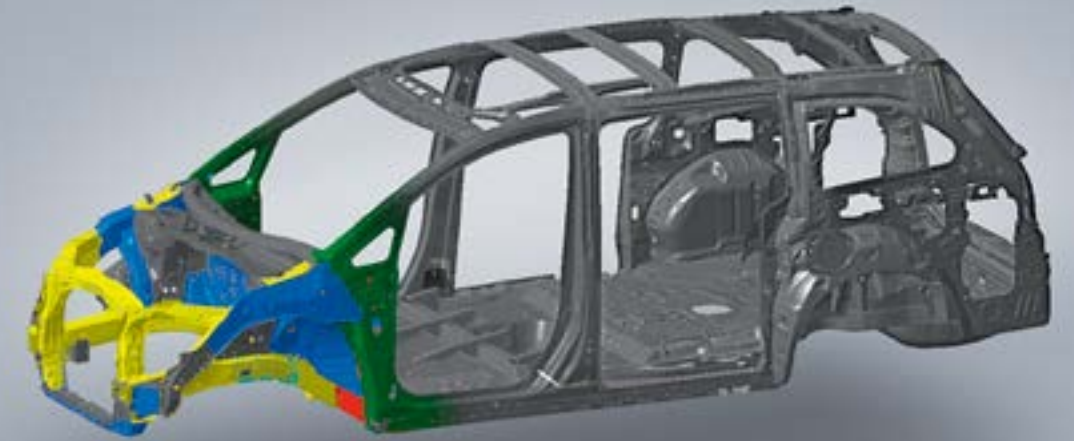
Even the most attentive of drivers can get distracted. That's why we've equipped the Odyssey with driver-assistive technology designed to help protect you and your most precious cargo.



Your safety is our priority.



Odyssey Touring shown in Deep Scarlet Pearl.



ADVANCED COMPATIBILITY ENGINEERING™ (ACE™) BODY STRUCTURE



MULTI-ANGLE REARVIEW CAMERA<sup>3</sup>

**SAFETY**



5-Star Overall Vehicle Score\*



EX-L, Touring and Touring Elite

Every Odyssey is equipped with advanced safety features designed to help protect you and your passengers, mile after mile.

**VEHICLE STABILITY ASSIST™ (VSA®) WITH TRACTION CONTROL**

VSA helps you stay on course in the event of an understeer or oversteer condition by braking individual wheels and/or reducing engine power to help restore your intended course.<sup>†</sup>

**SMARTVENT® AIRBAGS**

Front side airbags feature SmartVent technology designed specifically to help protect the driver's or front passenger's upper torso in the event of a side-impact collision.<sup>\*\*</sup>

**TIRE PRESSURE MONITORING SYSTEM (TPMS)<sup>4</sup>**

This system monitors the pressure in all four tires and alerts the driver if pressure in any tire becomes significantly low.

**FORWARD COLLISION WARNING (FCW)<sup>5</sup>**

The FCW system can help sense the presence of vehicles in front of you, and if it calculates that you're at risk of colliding with a detected vehicle, it activates audible and visible alerts (EX-L and above).

**ACE BODY STRUCTURE**

By distributing frontal impact energy more evenly throughout the vehicle, the Advanced Compatibility Engineering body structure helps protect passengers.

**MULTI-ANGLE REARVIEW CAMERA<sup>3</sup>**

Every Odyssey is equipped with a rearview camera. EX-L Navi and above models include three different angles.

\*Government 5-Star Safety Ratings are part of the National Highway Traffic Safety Administration's (NHTSA's) New Car Assessment Program. Model tested with standard side airbags (SABs). For additional information on the 5-Star Safety Ratings program, please visit [www.safercar.gov](http://www.safercar.gov). <sup>†</sup>VSA is not a substitute for safe driving. It cannot correct the vehicle's course in every situation or compensate for reckless driving. Control of the vehicle always remains with the driver. <sup>\*\*</sup>Honda reminds you and your passengers to always use seat belts and appropriate child seats. Children 12 and under are safest when properly restrained in the rear seat.





HondaLINK®<sup>6</sup>



ULTRAWIDE REAR ENTERTAINMENT SYSTEM



BLUETOOTH®<sup>7</sup> HANDSFREELINK®



TRI-ZONE AUTOMATIC CLIMATE CONTROL SYSTEM



PUSH BUTTON START



POWER SLIDING DOORS



COOL BOX



STEERING WHEEL-MOUNTED CONTROLS



SMART ENTRY

**HondaLINK®**  
Stay connected with cloud-based access to news and social media (EX and above).

**ULTRAWIDE REAR ENTERTAINMENT SYSTEM**  
Enjoy split-screen viewing with an ultrawide 16.2-inch screen and wireless headphones (Touring Elite).

**COOL BOX**  
Keeps drinks and snacks chilled while you drive (EX-L and above).

**BLUETOOTH®<sup>7</sup> HANDSFREELINK®**  
With *Bluetooth* HandsFreeLink you can place and receive calls without ever taking your hands off the wheel.\*

**TRI-ZONE AUTOMATIC CLIMATE CONTROL SYSTEM**  
The perfect way for everyone to choose their own temperature (EX and above).

**PUSH BUTTON START**  
Start your Odyssey with the push of a button (EX and above).

**POWER SLIDING DOORS**  
Dual power sliding doors maximize utility without compromising on style (EX and above).

**STEERING WHEEL-MOUNTED CONTROLS**  
Change the music or answer a phone call with your hands on the wheel.\*

**SMART ENTRY**  
Unlock and lock your Odyssey without fishing for your keys (EX and above).

\*Drive responsibly. Some state laws prohibit the operation of handheld electronic devices while operating a vehicle. For safety reasons, always launch your audio application or perform any other operation on your phone or audio device only when the vehicle is safely parked.





For all shapes and sizes.

Odyssey Touring Elite shown with Gray Leather.

INTERIOR CABIN

With plenty of space and several ways to configure the interior, the Odyssey keeps your passengers and your cargo comfortable.



SEATING FOR EIGHT



CARGO MODE

2ND-ROW WALK-IN FEATURE

Honda reminds you to properly secure cargo items.

SEATING FOR EIGHT

Every Odyssey has a spacious interior. EX and above models seat eight, making it easy to bring family and friends along for the ride.

CARGO MODE

With a one-motion 60/40 split 3rd-row Magic Seat,<sup>®</sup> the Odyssey can be configured to accommodate all kinds of cargo.<sup>®</sup>

2ND-ROW WALK-IN FEATURE

For easier access to the third row, just pull the lever and the 2nd-row seat moves forward to create extra space.





Odyssey Touring Elite shown in Lunar Silver Metallic with accessory roof rails, crossbars, body side molding and splash guards.



Getting there is all the fun.

Odyssey Touring Elite shown in Modern Steel Metallic.

PERFORMANCE

**3.5-LITER V-6 ENGINE**

There's no reason a minivan shouldn't be exciting to drive. That's why the Odyssey puts 248 horses\* at your disposal with a powerful 3.5-liter V-6 engine.

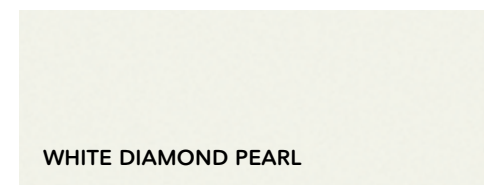
**28-MPG HIGHWAY RATING†**

The Odyssey is an efficient performer thanks in part to Variable Cylinder Management™ (VCM®), which gives you power when you need it and less fuel consumption when you don't.

\*SAE net. †19 city/28 highway/22 combined mpg rating. Based on 2016 EPA mileage ratings. Use for comparison purposes only. Your mileage will vary depending on how you drive and maintain your vehicle, driving conditions and other factors.



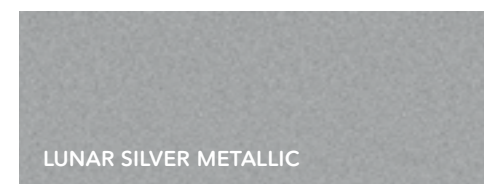
## EXTERIOR



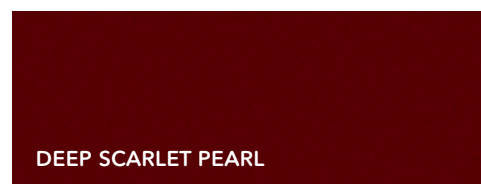
WHITE DIAMOND PEARL



OBSIDIAN BLUE PEARL



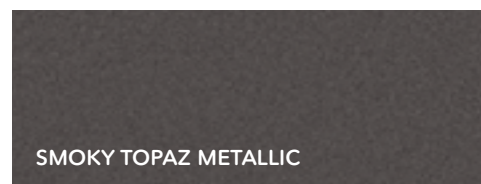
LUNAR SILVER METALLIC



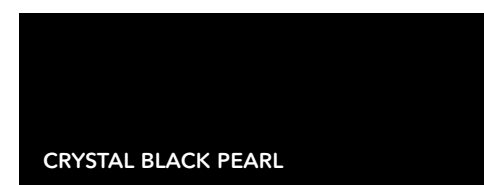
DEEP SCARLET PEARL



MODERN STEEL METALLIC



SMOKY TOPAZ METALLIC

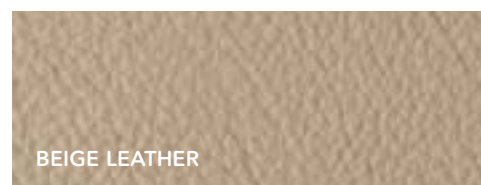


CRYSTAL BLACK PEARL

## INTERIOR LX / EX / SE



BEIGE FABRIC



BEIGE LEATHER



GRAY FABRIC



GRAY LEATHER



TRUFFLE FABRIC



TRUFFLE LEATHER

## KEY STANDARD FEATURES FOR ALL ODYSSEY MODELS

- 248-hp<sup>9</sup> 3.5-liter i-VTEC<sup>®</sup> V-6 engine
- One-motion 60/40 split 3rd-row Magic Seat<sup>®</sup>
- USB Audio Interface<sup>10</sup>
- Bluetooth<sup>®7</sup> HandsFreeLink<sup>®</sup> and streaming audio
- Rearview camera<sup>3</sup> with guidelines
- SMS text message function<sup>11</sup>

## TRIM COMBINATIONS

Exterior/Interior Colors	LX
Deep Scarlet Pearl	Beige Fabric
Lunar Silver Metallic	Gray or Truffle Fabric
Modern Steel Metallic	Gray Fabric
Obsidian Blue Pearl	Gray Fabric
White Diamond Pearl	Beige Fabric

Exterior/Interior Colors	EX / SE
Crystal Black Pearl	Gray or Truffle Fabric
Deep Scarlet Pearl	Beige Fabric
Lunar Silver Metallic	Gray or Truffle Fabric
Modern Steel Metallic	Gray Fabric
Obsidian Blue Pearl	Gray Fabric
Smoky Topaz Metallic	Truffle Fabric
White Diamond Pearl	Beige Fabric

Exterior/Interior Colors	EX-L / TOURING / ELITE
Crystal Black Pearl	Gray or Truffle Leather
Deep Scarlet Pearl	Beige Leather
Lunar Silver Metallic	Gray or Truffle Leather
Modern Steel Metallic	Gray Leather
Obsidian Blue Pearl	Gray Leather
Smoky Topaz Metallic	Truffle Leather
White Diamond Pearl	Beige or Truffle Leather



Whether you buy or lease a Honda vehicle, Honda Financial Services can assist you with the process. Please ask your dealer which lease or purchase plan best suits your needs.



Honda Care<sup>®</sup> is an affordable, comprehensive vehicle and travel protection plan backed by Honda reliability, service and parts. Please see your Honda dealer for details.



Manufactured to the same strict standards as Honda vehicles, Honda Genuine Accessories are the perfect way to personalize and protect your vehicle. Please see your Honda dealer for details.

## SPECIFICATIONS



LX



EX / SE / EX-L



TOURING / ELITE

## LX

- 248-hp<sup>9</sup> 3.5-liter i-VTEC<sup>®</sup> V-6 engine
- 6-speed automatic transmission
- Vehicle Stability Assist<sup>™</sup> (VSA<sup>®</sup>) with traction control
- i-MID with 8-inch high-resolution screen and customizable feature settings
- Rearview camera<sup>3</sup> with guidelines
- Bluetooth<sup>®7</sup> HandsFreeLink<sup>®</sup> and streaming audio
- SMS text message function<sup>11</sup>
- Tilt and telescopic steering column
- Driver's seat with 8-way power adjustment
- Front passenger's seat with 4-way power adjustment
- One-motion 60/40 split 3rd-row Magic Seat<sup>®</sup>
- Pandora<sup>®13</sup> compatibility
- USB Audio Interface<sup>10</sup>

## EX adds to or replaces LX features

- 17-inch alloy wheels
- Power sliding doors
- Heated power side mirrors
- Smart Entry
- Tri-zone automatic climate control system with humidity control and air filtration
- Honda LaneWatch<sup>™1</sup>
- Push button start
- Driver's seat with 10-way power adjustment, including power lumbar support
- HondaLink<sup>™</sup> featuring Aha<sup>™6</sup> compatibility
- Audio touch-screen

## SE adds to or replaces EX features

- HondaVAC<sup>®</sup>
- Rear Entertainment System with 115-volt power outlet
- SiriusXM<sup>®</sup> Radio<sup>14</sup>

## EX-L adds to or replaces EX features

- Forward Collision Warning (FCW)<sup>5</sup>
- Lane Departure Warning (LDW)<sup>15</sup>
- One-touch power moonroof with tilt feature
- Power tailgate
- Cool box
- Leather-trimmed interior
- Heated front seats
- SiriusXM Radio<sup>14</sup>
- Available Rear Entertainment System<sup>16</sup> with 115-volt power outlet
- Available Honda Satellite-Linked Navigation System<sup>™17</sup> with voice recognition, FM Traffic and multi-angle rearview camera<sup>3</sup> with guidelines

## TOURING adds to or replaces EX-L features

- 18-inch alloy wheels
- Fog lights
- Memory-linked side mirrors with reverse gear tilt-down
- Rear Entertainment System with 115-volt power outlet
- Driver's seat with two-position memory
- 3rd-row folding center armrest

## TOURING ELITE<sup>®</sup> adds to or replaces Touring features

- High-Intensity Discharge (HID) headlights with auto-on/off
- Ultrawide Rear Entertainment System with HDMI<sup>®</sup> technology<sup>18</sup>
- Blind-spot information system (BSI)<sup>2</sup>
- HondaVAC
- 650-watt AM/FM/CD premium audio system with 12 speakers, including subwoofer and 5.1 surround sound theater mode
- HD Radio<sup>™19</sup>

<sup>1</sup> Display accuracy will vary based on weather, size of object and speed, and the display may not show all relevant traffic. The display is not a substitute for your own direct visual assessment of traffic conditions before changing lanes. <sup>2</sup> The system is not a substitute for your own visual assessment before changing lanes. BSI may not detect all objects behind or to the side of a vehicle and may not detect a given object; system accuracy will vary based on weather, size of object, and speed. Driver remains responsible for safely operating vehicle and avoiding collisions. <sup>3</sup> Always visually confirm that it is safe to drive before backing up; the rearview camera display does not provide complete information about all conditions and objects at the rear of your vehicle. <sup>4</sup> For optimal tire wear and performance, tire pressure should be checked regularly with a gauge. Do not rely solely on the monitor system. Please see your Honda dealer for details. <sup>5</sup> Forward Collision Warning (FCW) cannot detect all objects ahead and may not detect a given object; accuracy will vary based on weather, speed and other factors. System operation affected by extreme interior heat. FCW does not include a braking function. Driver remains responsible for safely operating vehicle and avoiding collisions. <sup>6</sup> Compatible smartphone required. All Aha platform feeds are audible, not visual in nature. Vehicle does not provide any feeds. Some state laws prohibit the operation of handheld electronic devices while operating a vehicle. Launch smartphone applications only when the vehicle is safely parked. Aha is a trademark of Harman International Industries, Inc. Your wireless carrier's rates may apply. <sup>7</sup> The Bluetooth<sup>®</sup> word mark and logos are owned by the Bluetooth SIG, Inc., and any use of such marks by Honda Motor Co., Ltd., is under license. <sup>8</sup> Carrying too much cargo or improperly storing it can affect the handling, stability and operation of this vehicle. Follow applicable load limits and loading guidelines. <sup>9</sup> 248 hp @ 5700 rpm (SAE net). <sup>10</sup> The USB Audio Interface is used for direct connection to and control of some current digital audio players and other USB devices that contain MP3, WMA or AAC music files. Some USB devices with security software and digital rights-protected files may not work. Check the HondaLink website for smartphone compatibility. Please see your Honda dealer for details. <sup>11</sup> Compatible with select phones with Bluetooth<sup>®</sup>. Your wireless carrier's rate plans apply. State or local laws may limit use of texting feature. Only use texting feature when conditions allow you to do so safely. <sup>12</sup> 3-Year/36,000-Mile Limited Warranty, 5-Year/60,000-Mile Limited Powertrain Warranty. Ordinary maintenance or adjustments, parts subject to normal wear and replacement, and certain items are excluded. Please see your Honda dealer for the terms and conditions of the limited warranties. <sup>13</sup> Pandora, the Pandora logo, and the Pandora trade dress are trademarks or registered trademarks of Pandora Media, Inc. Used with permission. Compatible with select smartphones. See: www.pandora.com/everywhere/mobile. Not all devices compatible with USB connection. Your wireless carrier's rate plans apply. <sup>14</sup> SiriusXM services require a subscription after any trial period. If you decide to continue your SiriusXM service at the end of your trial subscription, the plan you choose will automatically renew and bill at then-current rates until you call SiriusXM at 1-866-635-2349 to cancel. See our Customer Agreement for complete terms at www.siriusxm.com. Fees and programming subject to change. XM satellite service is available only to those at least 18 years and older in the 48 contiguous United States and D.C. ©2016 SiriusXM Radio Inc. Sirius, XM and all related marks and logos are trademarks of SiriusXM Radio Inc. <sup>15</sup> Lane Departure Warning (LDW) only alerts drivers when lane drift is detected without a turn signal in use. LDW may not detect all lane markings or lane departures; accuracy will vary based on weather, speed and road condition. System operation affected by extreme interior heat. Driver remains responsible for safely operating vehicle and avoiding collisions. <sup>16</sup> The Honda Satellite-Linked Navigation System<sup>™</sup> and Rear Entertainment System are only available separately on EX-L models. <sup>17</sup> The Honda Satellite-Linked Navigation System<sup>™</sup> is available on EX-L models and standard on Touring models in the United States, Canada and Puerto Rico. (FM Traffic service only available in the United States, except Alaska). Please see your Honda dealer for details. <sup>18</sup> A separate source device is required to use split-screen function. HDMI, the HDMI Logo, and High-Definition Multimedia Interface are trademarks or registered trademarks of HDMI Licensing LLC in the United States and other countries. <sup>19</sup> HD Radio<sup>™</sup> is a proprietary trademark of iBiquity Digital Corporation. <sup>20</sup> NHL and the NHL Shield are registered trademarks of the National Hockey League. ©NHL 2016. All Rights Reserved. <sup>21</sup> The Twitter bird logo and Stylized V logo are trademarks of Twitter, Inc., or its affiliates. **Honda reminds you and your passengers to always use seat belts and appropriate child seats. Children 12 and under are safest when properly restrained in the rear seat.** Specifications, features, illustrations and equipment shown in this brochure are based upon latest available information at the time of printing. Although descriptions are believed to be correct, accuracy cannot be guaranteed. American Honda Motor Co., Inc., reserves the right to make changes at any time, without notice or obligation, in colors, specifications, accessories, materials and models. Some features mentioned herein are not available in all areas. Please see your Honda dealer for details. Some vehicles may be shown with optional equipment. Available = Optional. All images contained herein are either owned by American Honda Motor Co., Inc., or used under a valid license. It is a violation of federal law to reproduce these images without express written permission from American Honda Motor Co., Inc., or the individual copyright owner of such images. Honda Financial Services is a DBA of American Honda Finance Corporation. Honda, the H-mark symbol, Honda Care, Honda LaneWatch, HondaLink, Honda Satellite-Linked Navigation System, HondaVAC, Advanced Compatibility Engineering, ACE, HandsFreeLink, i-VTEC, Magic Seat, SmartVent, Touring Elite, Variable Cylinder Management, VCM, Vehicle Stability Assist and VSA are trademarks of Honda Motor Co., Ltd. © 2016 American Honda Motor Co., Inc.





odyssey.honda.com



Powerful. Agile. Versatile enough to handle almost any condition. It's no wonder Honda is the official vehicle of the NHL.<sup>20</sup>



Join the millions of other Honda fans and connect with us socially.<sup>21</sup>