

2017 Sienna



TOYOTA

Let's
Go
Places

Let everyone in on the fun. The 2017 Toyota Sienna.

The one and only Swagger Wagon. The 2017 Toyota Sienna is a minivan that the whole family can agree on. With its refined interior and fresh exterior styling, Sienna is perfect for play dates and date nights. Plus, the new 3.5-liter V6 direct-injection engine with Direct Shift-8AT (Automatic Transmission) helps deliver enhanced fuel economy, torque and horsepower. Sienna SE raises the game with more aggressive styling, plus sport-tuned suspension and steering, while Limited has luxuries like available lounge seating²⁵ and a dual moonroof that will make you the coolest family on the block. Sienna has enough power, space and style to take your family and friends anywhere. Let's go places.



SE Premium shown in Silver Sky Metallic.

See numbered footnotes in Disclosures section.



—
“Fun is around every corner.”
—



STYLING



Introduce your family to ours.

Every family is unique. That's why we offer so many different versions of Sienna. All told, there are five models to choose from: L, LE, SE, XLE and Limited. There's one thing, however, that all Siennas have in common: the efficiency and power of a new 3.5-liter V6 direct-injection engine. And for an added measure of confidence, you can go with available All-Wheel Drive (AWD).

XLE AWD shown in Predawn Gray Mica.

The family hauler that really hauls. We upped the ante on performance.

There's no reason driving fun and family comfort should be mutually exclusive values. That's the thinking behind Toyota Sienna, which is engineered with a lightweight, rigid and aerodynamically optimized body for responsive handling. A new 296-hp V6 direct-injection engine helps deliver greater efficiency and power. Plus, SE utilizes sport-tuned suspension and sport-calibrated Electric Power Steering (EPS) for a more direct steering feel. It's performance-oriented engineering that everyone can appreciate.



MPG

Sienna offers an impressive EPA-estimated mpg^{47, 53} for a 7- or 8-passenger van. The efficiency is the product of Dual Variable Valve Timing with intelligence (VVT-i), a smooth-shifting 8-speed automatic transmission and refined aerodynamics.



FUEL ECONOMY INDICATOR

The power of Sienna's V6 engine is bound to inspire some spirited driving in you. So, to help you drive more economically, the available fuel economy indicator shows you when your right foot is, perhaps, too spirited. That way you can back off a bit to help enhance better fuel economy.



V6

All Sienna models come equipped with a new 3.5-liter V6 direct-injection engine with Direct Shift-8AT (Automatic Transmission). This new powertrain not only improves fuel economy, but also increases horsepower to 296 hp and torque to 263 lb.-ft.



AWD

Sienna is the only minivan sold in America with available All-Wheel Drive (AWD).¹ The AWD system on Sienna utilizes active torque control. With an electromagnetically controlled coupling positioned at the front of the rear differential, this AWD system uses information sent from various sensors to transmit the right amount of torque to the front and rear wheels.

LE AWD shown in Super White. 2016 model shown.

1. Based on manufacturers' website data, June 2016.

A premium experience for kids and parents.

Fall in love with Sienna's inviting soft-touch seating and available premium contrast stitching, but don't forget about all the technology. We designed Sienna to be the perfect partner no matter where the day takes you. A cockpit-like driver's area with an available 7-in. touch-screen and 4.2-in. color MID screen, plus easy-to-use climate controls, helps make every trip a little more enjoyable. Sienna's tech and comfort help keep parents and kids rolling in style.



DUAL-VIEW BLU-RAY DISC™ ENTERTAINMENT CENTER²²

The rear seat just got better. The available Dual-View Entertainment Center²² has Blu-ray capability and includes a 16.4-in. color display, SD and HDMI inputs, two 120V AC power outlets and a remote with two wireless headphones.²³ Its unique screen can display one wide-angle image or two smaller images from separate sources at the same time.



GAUGE CLUSTER WITH MID

Get more information from a quick glance with Sienna's stylish gauge cluster. Customize the large, easy-to-read available 4.2-in. color Multi-Information Display (MID) to show what you need most. And for those with a sportier side, Sienna SE offers racing-inspired white-faced gauges.



7-IN. TOUCH-SCREEN

Connecting with Sienna's tech has never been easier. An available high-resolution 7-in. touch-screen display makes it easy to find your favorite music, access apps via the Entune® App Suite,²⁰ and use the Integrated Navigation¹⁹ features to help you get on your way.



SE Premium interior shown in Black with white accent stitching.

It's like a family-friendly five-star resort.

Sienna has the tech and convenience to make your active lifestyle easier and more fun. We took everything you and your kids wanted in an interior and put it all together in a premium, easy-to-access package. Whether you want to listen to a favorite soundtrack, watch a family-friendly movie or just fit more stuff, Sienna is ready to go. Welcome to the ultimate family room.



DRIVER EASY SPEAK

Yes, those in the rear seats can hear you now. Sienna's available Driver Easy Speak feature has a built-in microphone up front that picks up your voice and transmits it to rear-seat passengers through the back speakers. To turn it on, just press the button on the 7-in. touch-screen display.



DUAL MOONROOF

Not a bad seat in the house. With Sienna's available dual moonroof, your family can enjoy a fresh breeze or a clear view of the stars no matter what seat they're in. Open the moonroof a little, or a lot — either way, you're in control of your environment with Sienna.



HEATED STEERING WHEEL

A great hands-on experience no matter the temp. An available heated power steering wheel makes doing that early-morning school drive as soothing as a warm cup of coffee. With comforts like these, you just might volunteer for carpool.



POWER SPLIT & STOW 3RD ROW™ SEAT

Expand your ability to carry and do more. The power third-row seat in Sienna Limited FWD splits 60/40 to adapt to your needs. Just push two buttons, and the seat folds and retreats into the cargo area storage compartment — convenient if you're carrying lots of cargo.



ENTUNE™ PREMIUM AUDIO

Grown-up tech to help everyone enjoy the drive. With an available 7-in. touch-screen, plus Entune™ Premium JBL® Audio with Integrated Navigation¹⁹ and App Suite²⁰ that offers popular mobile applications and a wealth of valuable data services, Sienna keeps you entertained and informed. Plus, all this can be accessed easily, and hands-free, with a Bluetooth®-enabled¹⁴ smartphone.

Limited Premium FWD interior shown in Chestnut with white accent stitching.

See numbered footnotes in Disclosures section.

Team. Squad. Crew. Bring whomever you like.

Parent. Coach. Bandleader. You play a lot of roles, so we made sure you have choices like second-row seats that tip up and slide forward, and an available power third-row seat to make loading up to eight passengers and cargo easier. Plus there is plenty of head room, leg room and hip room. So now, even if the kids outgrow their car seats, or the college band reunites, Sienna will be right there with you.



POWER LIFTGATE

Easier opening. Easier closing. Simply reach for your key fob to open Sienna's available power liftgate. With the push of a button, it opens in seconds and can be closed from the comfort of your driver's seat, so you can focus on getting to your next destination.



STOWABLE CENTER SEAT

A seat with options. Available on 8-passenger models, this seat is easily stowed in the rear when not in use. This offers even more versatility for those unexpected passengers.



CONTRAST STITCHING

Complementing Sienna's premium feel is available contrast stitching. Using genuine thread, this subtle design touch adds visual interest and contemporary style. It's one of many quality details that help Sienna's new interior stand out.



Limited Premium FWD shown in Blizzard Pearl.¹

1. Extra-cost color.

We've taken an active interest in your family.

Every new Toyota is equipped with the Star Safety System,[™] a suite of six active safety features designed to help keep you out of harm's way. The system includes Enhanced Vehicle Stability Control (VSC);³¹ Traction Control (TRAC), Anti-lock Brake System (ABS), Electronic Brake-force Distribution (EBD), Brake Assist (BA)³² and Smart Stop Technology[®] (SST).³³ What's more, Sienna's Vehicle Dynamics Integrated Management (VDIM)³⁴ system, available on the Limited Premium FWD model, enhances the effectiveness of Sienna's Star Safety System[™] by coordinating with various active safety features to help anticipate potential trouble and react accordingly.



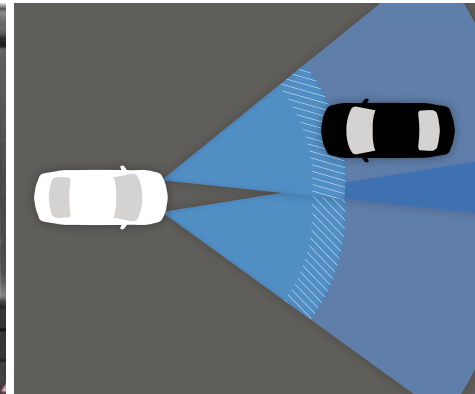
BLIND SPOT MONITOR (BSM)⁴ AND REAR CROSS-TRAFFIC ALERT (RCTA)⁵

Using radar technology, the available Blind Spot Monitor⁴ is designed to alert you when a vehicle enters a blind spot on either side. Available Rear Cross-Traffic Alert⁵ works similarly by providing you with audible and visual indicators to warn you of approaching vehicles.



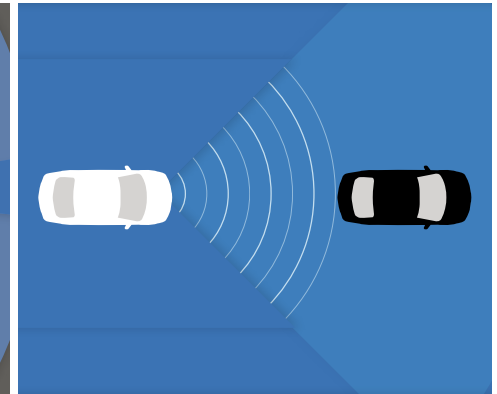
STANDARD INTEGRATED BACKUP CAMERA⁸

A backup camera⁸ comes standard on Sienna. Available on Limited is a backup camera⁸ with 180-degree wide-angle view, both of which help make reversing and parking easier. You can choose from wide or normal views, plus guideline modes that show your distance and projected path.



AUTOMATIC HIGH BEAMS (AHB)²

The available Automatic High Beam² system allows for enhanced visibility, helping make nighttime driving easier. Using a camera to detect oncoming vehicles' headlights, Automatic High Beams² can switch between high and low beams for you.



DYNAMIC RADAR CRUISE CONTROL (DRCC)²⁶

Cruise with more control. The available Dynamic Radar Cruise Control²⁶ is designed to keep a preselected following distance between your Sienna and the vehicle traveling in front of you. If that vehicle slows down, so do you — and if it speeds back up or changes lanes, DRCC²⁶ will help you automatically accelerate back to your set cruising speed.



MUDDY SURFACE

If the driver applies excessive pressure to the accelerator, Traction Control (TRAC) helps prevent wheel slippage on many types of surfaces.

GRAVEL SURFACE

On most road surfaces, standard Electronic Brake-force Distribution (EBD) optimizes stopping power. The system's sensors read the vehicle load in Sienna and send the appropriate brake force to each wheel.

SLUSHY SURFACE

Sienna comes prepared for winter conditions. To help compensate for a loss of traction while cornering, Sienna utilizes Enhanced Vehicle Stability Control (VSC).³¹ The system adjusts engine power, braking and steering torque-assist control to help the vehicle follow the direction in which it is being steered.

WET SURFACE

The Anti-lock Brake System (ABS) modulates brake pressure when braking hard or when braking on a slippery surface, helping to avoid wheel lockup and maintain steering control.

Spoil them with safety.

Our commitment to your family's well-being doesn't end with the active safety features found in the Star Safety System.™ Should a collision occur, Sienna's comprehensive set of eight standard airbags³⁵ is designed to help protect occupants in all three rows of seating. Sienna also offers a multitude of features, like available rain-sensing windshield wipers, that you might not associate with safety but that can help ensure your overall peace of mind.

SAFETY CONNECT²⁹

Via Toyota's 24/7 call center, available Safety Connect²⁹ offers subscribers helpful features such as Emergency Assistance, Stolen Vehicle Locator, Roadside Assistance and Automatic Collision Notification. Safety Connect[®] also offers the reliability of embedded cellular and GPS technology.

PRE-COLLISION SYSTEM (PCS)³⁸

This available system is designed to use radar to determine if a frontal collision is imminent, alerts the driver with visual and audible warnings, and, under certain circumstances, can automatically apply the brakes to help slow the vehicle and help reduce the impact energy.

COMPREHENSIVE AIRBAG SYSTEM³⁵

Sienna comes standard with a driver and front passenger Advanced Airbag System.³⁵ In the event of certain frontal collisions, the dual stage front airbag system senses impact severity while adjusting airbag deployment accordingly. Sienna also comes standard with a driver knee airbag, front passenger seat-cushion airbag, driver and front passenger seat-mounted side airbags, and side curtain airbags that cover the length of the cabin from the front seats to the third-row seats.

HILL START ASSIST CONTROL (HAC)⁴⁰

If you're at a stop on an uphill grade, available HAC⁴⁰ helps prevent the vehicle from rolling backward as you switch from the brake to the accelerator. When activated, the feature holds the brakes for approximately two seconds as the driver switches from the brake pedal to the accelerator.

FRONT AND REAR PARKING ASSIST SONAR^{39, 49}

From locations within the front and rear bumpers, Sienna's available sonar^{39, 49} gauges the area in a parking space to help the driver guide the vehicle.

SIDE-IMPACT DOOR BEAMS

Within each of Sienna's four doors are steel beams designed to help protect the occupants in the event of a side-impact collision.



SEATBELTS

Sienna features a 3-point Emergency Locking Retractor (ELR) seatbelt for the driver's seat and Automatic/Emergency Locking Retractors (ALR/ELR) for all passenger belts.

LATCH

LATCH (Lower Anchors and Tethers for CHildren) provides an added measure of safety for smaller family members. Sienna offers four LATCH locations, including lower anchors and tethers on outboard second- and third-row seats.

SE Premium shown in Predawn Gray Mica.

PERFORMANCE



SE Premium shown in Super White.

SIENNA MODELS



L

Exterior

- 17-in. 5-spoke alloy wheels with P235/60R17 tires
- Projector-beam halogen headlights with auto on/off feature
- Power outside mirrors with blind spot mirrors³
- Windshield wiper de-icer
- Engine immobilizer⁴¹

Interior

- Seating for seven with second-row captain's chairs
- Entune™ Audio
- Soft-touch materials
- Three-zone automatic climate control with air filter, individual temperature settings for driver, front passenger and rear-seat passengers, and separate rear digital control panel
- Integrated backup camera⁹
- 6-way adjustable driver's seat
- 4-way adjustable front passenger seat
- 60/40 Split & Stow 3rd Row™ seat
- 3.5-in. LCD Multi-Information Display
- Four LATCH locations



LE

Exterior

- Available 18-in. 10-spoke machined alloy wheels with P235/55RF18 tires (AWD only)
- Color-keyed front grille with chrome surround
- Color-keyed heated power outside blind spot mirrors³
- Dual power sliding side doors
- Black roof rails
- Privacy glass on rear windows

Interior

- Seating for up to eight
- Entune™ Audio Plus with Connected Navigation App¹⁶
- 8-way power-adjustable driver's seat
- 40/20/40 second-row seat with tip-up and long-slide feature and stowable center seat
- Second- and third-row sunshades

Available

- AWD
- Auto Access Seat



SE

Exterior

- 19-in. 6-spoke gunmetal-finish alloy wheels with P235/50R19 tires
- Projector-beam halogen headlights with smoked sport trim, auto on/off feature and LED Daytime Running Lights (DRL)
- Sport mesh front grille
- Available color-keyed heated power outside mirrors with blind spot warning indicators⁴
- Chrome-accented outside door handles
- Fog lights

Interior

- Seating for up to eight
- Perforated leather-trimmed and multi-stage heated front seats
- Sport instrumentation with 4.2-in. color TFT Multi-Information Display

Available

- SE Premium (includes but not limited to):
 - Blind Spot Monitor (BSM)⁴ and Rear Cross-Traffic Alert (RCTA)⁵
 - Power tilt/slide moonroof
 - Chrome-accented outside door handles with touch-sensor lock/unlock feature
 - Smart Key System²⁷ with Push Button Start
 - Driver Easy Speak
 - Entune™ Premium Audio with Integrated Navigation¹⁹ and App Suite²⁰
 - Dual-View Blu-ray Disc™ Entertainment Center²² with 16.4-in. display, HDMI port and two 120V AC power outlets
- SE Preferred Package



XLE

Exterior

- 17-in. 7-spoke machined alloy wheels with P235/60R17 tires
- Available 18-in. 10-spoke machined alloy wheels with P235/55RF18 tires (AWD only)
- Metallic front grille with chrome surround
- Color-keyed heated power outside mirrors with blind spot warning indicators⁴
- Chrome-accented outside door handles with touch-sensor lock/unlock feature

Interior

- Seating for up to eight
- Leather-trimmed and multi-stage heated front seats
- Leatherette-trimmed 60/40 Split & Stow 3rd Row™ seat
- Leather-trimmed tilt/telescopic steering wheel with audio, *Bluetooth*^{®14} and voice-command controls
- Smart Key System²⁷ with Push Button Start

Available

- XLE Premium:
 - Seating for up to eight
 - Rear parking assist sonar³⁹
 - Dual-View Blu-ray Disc™ Entertainment Center²² with 16.4-in. display, HDMI port and two 120V AC power outlets
 - Entune™ Premium Audio with Integrated Navigation¹⁹ and App Suite²⁰
 - Driver Easy Speak
 - HD Radio™ Technology,¹⁶ SiriusXM® Satellite Radio¹⁷
- AWD
- Auto Access Seat



Limited

Exterior

- 18-in. 10-spoke machined alloy wheels with P235/55R18 tires
- Projector-beam halogen headlights with auto on/off feature and LED Daytime Running Lights (DRL)
- Color-keyed heated power outside mirrors with blind spot warning indicators⁴ and memory feature

Interior

- Seating for seven with premium leather-trimmed second-row captain's chairs and available lounge seating²⁵
- Power third-row seat (FWD only)
- Premium leather-trimmed and multi-stage heated front seats
- Entune™ Premium JBL® Audio with Integrated Navigation¹⁹ and App Suite²⁰
- Heated leather-trimmed tilt/telescopic steering wheel with audio, *Bluetooth*^{®14} and voice-command controls
- Front and rear parking assist sonar³⁹

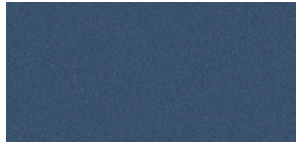
Available

- Limited Premium:
 - High Intensity Discharge (HID) headlights with manual level control, Automatic High Beams,² auto on/off feature and LED Daytime Running Lights (DRL)
 - 18-in. 10-spoke machined alloy wheels with P235/55RF18 tires (AWD only)
 - Dual-View Blu-ray Disc™ Entertainment Center²² with 16.4-in. display, HDMI port and two 120V AC power outlets
 - Rain-sensing windshield wipers
- AWD
- Limited Advanced Technology Package:
 - Dynamic Radar Cruise Control (DRCC)²⁶ Pre-Collision System (PCS),³⁸ Vehicle Dynamics Integrated Management (VDIM)³⁴ and Hill Start Assist Control (HAC)⁴⁰

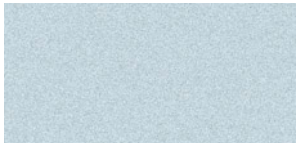
Color



Midnight Black Metallic



Shoreline Blue Pearl



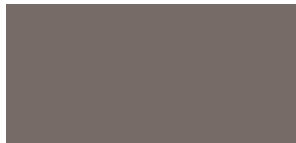
Sky Blue Pearl



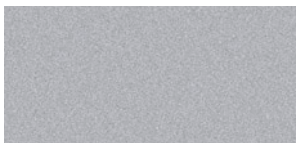
Salsa Red Pearl



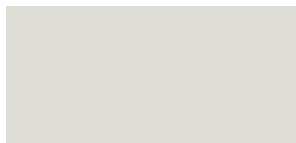
Crème Brulee Mica



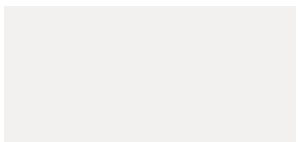
Predawn Gray Mica



Silver Sky Metallic

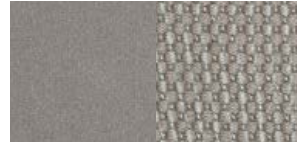


Blizzard Pearl¹



Super White

Trim



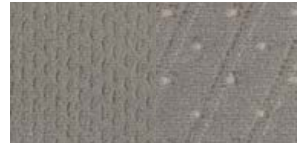
L fabric shown in Ash

Also available in



Dark Bisque fabric

Also available in



LE fabric shown in Ash



Dark Bisque fabric



SE perforated leather shown in Black

Also available in

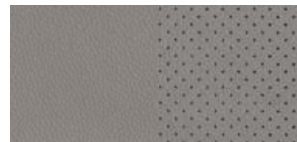


XLE leather shown in Ash

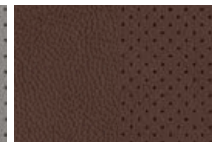


Dark Bisque leather

Also available in



Limited perforated leather shown in Ash



Chestnut leather

Wheels



L and LE 17-in. 5-spoke alloy wheel



SE 19-in. 6-spoke gunmetal-finish alloy wheel



XLE 17-in. 7-spoke machined alloy wheel



LE AWD, XLE AWD and Limited 18-in. 10-spoke machined alloy wheel

*Not all colors and trims available on all model grades. See dealer for details. 1. Extra-cost color.

ACCESSORIES

Because no two families are alike. A wide range of Genuine Toyota Accessories⁵⁰ is available to help you make your Sienna your own. Considering how appealing Sienna is to begin with, these quality products will be like icing on the cake. Some accessories may not be available in all regions of the country. See your Toyota dealer for details.

Alloy wheel locks
All-weather floor mats⁴⁸
Ashtray cup
Ball mount⁴⁵
Cargo net — envelope⁴⁴

Cargo organizer⁴⁴
Cargo tote⁴⁴
Carpet floor mats⁴⁸
Door edge guards
Doorsill protectors

Emergency assistance kit
First aid kit
Lower door molding
Mudguards
Paint protection film⁵⁰

Remote Engine Starter⁵¹
Roof rail cross bars⁴⁴
Vehicle Intrusion Protection (VIP)
Security System⁵²
Wireless headphones²³



Auto access seat



Cargo organizer⁴⁴



Roof rail cross bars⁴⁴



Mudguards

Sienna LE and XLE are available with an industry-first, factory-installed Auto Access Seat to help those who need assistance getting into or out of a vehicle. The Auto Access Seat extends and retracts in the second-row position at the push of a button on either the remote or the seat itself. Dealer special order required. 2014 model shown.



Lower door molding



Cargo tote⁴⁴

Features¹

EXTERIOR	L	LE	SE	SE PREMIUM	XLE	XLE PREMIUM	LIMITED	LIMITED PREMIUM
Projector-beam halogen headlights with auto on/off feature and Daytime Running Lights (DRL)	S	S	–	–	S	S	–	–
Projector-beam halogen headlights with smoked sport trim, auto on/off feature and LED Daytime Running Lights (DRL)	–	–	S	S	–	–	–	–
Projector-beam halogen headlights with auto on/off feature and LED Daytime Running Lights (DRL)	–	–	–	–	–	–	S	–
High Intensity Discharge (HID) headlights with manual level control, Automatic High Beams, ² auto on/off feature and LED Daytime Running Lights (DRL)	–	–	–	–	–	–	–	S
Integrated wide-angle fog lights	–	–	S	S	S	S	S	S
LED taillights and stop lights with smoked sport trim	–	–	S	S	–	–	–	–
Color-keyed front and rear underbody spoilers and side rocker panels	–	–	S	S	–	–	–	–
Black front grille	S	–	–	–	–	–	–	–
Color-keyed front grille with chrome surround	–	S	–	–	–	–	–	–
Sport mesh front grille with smoked chrome surround	–	–	S	S	–	–	–	–
Bright metallic front grille with chrome surround	–	–	–	–	S	S	–	–
Metallic front grille with SuperChrome surround	–	–	–	–	–	–	S	S
Black power outside mirrors with integrated blind spot mirrors ³	S	–	–	–	–	–	–	–
Color-keyed heated power outside mirrors with integrated blind spot mirrors ³	–	S	S	–	–	–	–	–
Color-keyed heated power outside mirrors with blind spot warning indicators ⁴ and Rear Cross-Traffic Alert (RCTA) ⁵	–	–	P	S	S	S	–	–
Color-keyed heated power auto-dimming outside mirrors with turn signal and blind spot warning indicators ⁴ ; Rear Cross-Traffic Alert (RCTA) ⁵ ; puddle lights and power-folding, reverse tilt-down and memory features	–	–	–	–	–	–	S	S
Dual sliding side doors	S	–	–	–	–	–	–	–
Dual power sliding side doors with jam protection	–	S	–	–	–	–	–	–
Dual power sliding side doors and power liftgate with jam protection	–	O ⁶	S	S	S	S	S	S
Color-keyed outside door handles	–	S	–	–	–	–	–	–
Chrome-accented outside door handles	–	–	S	–	–	–	–	–
Chrome-accented outside door handles with touch-sensor lock/unlock feature	–	–	–	S	S	S	S	S
Black Sienna logo liftgate license garnish	S	–	–	–	–	–	–	–
Color-keyed Sienna logo liftgate license garnish	–	S	S	S	S	S	–	–
Chrome-accented Sienna logo liftgate license garnish	–	–	–	–	–	–	S	S
Power tilt/slide moonroof	–	–	O/P	S	S	S	–	–
Dual moonroof with front power tilt/slide and power rear slide	–	–	–	–	–	–	S	S
17-in. 5-spoke alloy wheels with P235/60R17 tires (FWD models only)	S	S	–	–	–	–	–	–
17-in. 7-spoke machined alloy wheels with P235/60R17 tires (FWD models only)	–	–	–	–	S	S	–	–
18-in. 10-spoke machined alloy wheels with P235/55R18 tires (FWD models only)	–	–	–	–	–	–	S	S
18-in. 10-spoke machined alloy wheels with P235/55RF18 tires ⁷	–	O	–	–	O	O	O	O
19-in. 6-spoke gunmetal-finish alloy wheels with P235/50R19 tires	–	–	S	S	–	–	–	–
Washer-linked variable intermittent windshield wipers	S	S	S	S	S	S	S	–
Rain-sensing washer-linked variable intermittent windshield wipers	–	–	–	–	–	–	–	S
Windshield wiper de-icer	S	S	S	S	S	S	S	S
Privacy glass on rear windows	–	S	S	S	S	S	S	S
Black roof rails	–	S	S	S	S	S	S	S
Rear bumper protector	–	S	S	S	S	S	S	S
Color-keyed rear spoiler with LED center high-mount stop light and integrated concealed intermittent rear wiper	S	S	S	S	S	S	S	S
In-glass AM/FM antenna	S	S	S	S	S	S	S	S
Roof-mounted shark-fin antenna	–	–	–	–	–	–	S	S

S = Standard O = Optional – = Not Available P = Feature is available as part of an option package.

Features (continued)

INTERIOR	L	LE	SE	SE PREMIUM	XLE	XLE PREMIUM	LIMITED	LIMITED PREMIUM
Three-zone automatic climate control with air filter, individual temperature settings for driver, front passenger and rear-seat passengers, and separate rear digital control panel	S	S	S	S	S	S	S	S
Integrated backup camera ^a	S	S	S	S	S	S	S	S
Entune™ Audio — includes Entune™ Multimedia Bundle ⁹ (6.1-in. touch-screen display, AM/FM CD player, MP3/WMA playback capability, four speakers in four locations, auxiliary audio jack, USB 2.0 port ¹⁰ with iPod ^{®11} connectivity and control, advanced voice recognition ¹² hands-free phone capability, phone book access and music streaming ¹³ via Bluetooth ^{®14} wireless technology), Siri [®] Eyes Free ¹⁵ and integrated backup camera display ⁶	S	—	—	—	—	—	—	—
Entune™ Audio Plus with Connected Navigation App ¹⁶ — includes Entune™ Multimedia Bundle ⁹ (7-in. high-resolution touch-screen display, AM/FM CD player, MP3/WMA playback capability, six speakers in six locations, auxiliary audio jack, USB 2.0 port ¹⁰ with iPod ^{®11} connectivity and control, advanced voice recognition ¹² hands-free phone capability, phone book access and music streaming ¹³ via Bluetooth ^{®14} wireless technology), Connected Navigation Scout [®] GPS Link App ¹⁶ , Siri [®] Eyes Free ¹⁵ , SiriusXM [®] Satellite Radio ¹⁷ with 3-month complimentary SiriusXM All Access trial, HD Radio™ Technology, ¹⁸ HD Radio™ Traffic and Weather in major metro areas, and integrated backup camera display ⁶	—	S	S	—	S	—	—	—
Entune™ Premium Audio with Integrated Navigation ¹⁹ and App Suite ²⁰ — includes Entune™ Multimedia Bundle ⁹ (7-in. high-resolution touch-screen with split-screen display, AM/FM CD player with MP3/WMA playback capability, six speakers in six locations, auxiliary audio jack, USB 2.0 port ¹⁰ with iPod ^{®11} connectivity and control, advanced voice recognition ¹² hands-free phone capability, phone book access and music streaming ¹³ via Bluetooth ^{®14} wireless technology), Entune [®] App Suite ²⁰ , HD Radio™ Technology, ¹⁸ HD Radio™ Predictive Traffic and Doppler Weather overlay, AM/FM cache radio, Siri [®] Eyes Free ¹⁵ , SiriusXM [®] Satellite Radio ¹⁷ with 3-month complimentary SiriusXM All Access trial, Gracenote [®] album cover art and integrated backup camera display ⁶ . Access to Entune [®] App Suite ²⁰ is subscription-free. See toyota.com/entune for details.	—	—	P	S	P	S	—	—
Entune Premium JBL [®] Audio with Integrated Navigation ¹⁹ and App Suite ²⁰ — includes Entune™ Multimedia Bundle ⁹ (7-in. high-resolution touch-screen with split-screen display, AM/FM CD player with MP3/WMA playback capability, ten JBL [®] speakers in ten locations including subwoofer, auxiliary audio jack, USB 2.0 port ¹⁰ with iPod ^{®11} connectivity and control, advanced voice recognition ¹² hands-free phone capability, phone book access and music streaming ¹³ via Bluetooth ^{®14} wireless technology), Entune [®] App Suite ²⁰ , HD Radio™ Technology, ¹⁸ HD Radio™ Predictive Traffic and Doppler Weather overlay, AM/FM cache radio, Siri [®] Eyes Free ¹⁵ , SiriusXM [®] Satellite Radio ¹⁷ with 3-month complimentary SiriusXM All Access trial, Gracenote [®] album cover art and integrated backup camera display ⁶ . Access to Entune [®] App Suite ²⁰ is subscription-free. See toyota.com/entune for details.	—	—	—	—	—	—	S	S
Entune [®] App Suite ²⁰ — includes Destination Search, Facebook Places, iHeartRadio, MovieTickets.com, OpenTable [®] , Pandora ^{®21} and Yelp [®] ; real-time info including traffic, weather, fuel prices, sports and stocks. Access to Entune [®] App Suite ²⁰ is subscription-free. See toyota.com/entune for details.	—	—	P	S	P	S	S	S
Driver Easy Speak — utilizes microphone in overhead console to amplify the driver's voice and broadcast it through rear speakers	—	—	P	S	P	S	S	S
Dual-View Blu-ray Disc™ Entertainment Center ²² with 16.4-in. display, RCA jacks, SD card and HDMI inputs, two 120V AC power outlets, remote and two wireless headphones ²³	—	—	—	S	—	S	—	S
Fabric-trimmed front seats; 6-way adjustable driver's seat; 4-way adjustable front passenger seat	S	—	—	—	—	—	—	—
Easy-clean fabric-trimmed front seats with seatback pockets; 8-way power-adjustable driver's seat with power lumbar support; 4-way adjustable front passenger seat	—	S	—	—	—	—	—	—
Perforated leather-trimmed and multi-stage heated front seats and seatback pockets; 8-way power-adjustable driver's seat with power lumbar support; 4-way adjustable front passenger seat	—	—	S	S	—	—	—	—
Leather-trimmed and multi-stage heated front seats with seatback pockets; 8-way power-adjustable driver's seat with power lumbar support; 4-way power-adjustable front passenger seat	—	—	—	—	S	S	—	—
Premium leather-trimmed and multi-stage heated front seats with seatback pockets; 8-way power-adjustable driver's seat with driver memory function and power lumbar support; 4-way power-adjustable front passenger seat	—	—	—	—	—	—	S	S
7-passenger seating with removable fabric-trimmed second-row captain's chairs and tip-up and long-slide feature	S	—	—	—	—	—	—	—
7-passenger seating with removable easy-clean fabric-trimmed second-row captain's chairs and tip-up and long-slide feature	—	O	—	—	—	—	—	—
7-passenger seating with removable fabric-trimmed second-row driver-side captain's chair and tip-up and long-slide feature and Auto Access Seat (second-row passenger-side power-extending and -retracting seat — Auto Access models only)	—	O ²⁴	—	—	—	—	—	—
8-passenger seating with removable easy-clean fabric-trimmed 40/20/40 second-row seat, tip-up and long-slide feature and stowable center seat (FWD models only)	—	S	—	—	—	—	—	—
8-passenger seating with removable perforated leather-trimmed 40/20/40 second-row seat, tip-up and long-slide feature and stowable center seat	—	—	S	S	—	—	—	—
8-passenger seating with removable leather-trimmed 40/20/40 second-row seat, tip-up and long-slide feature and stowable center seat (FWD models only)	—	—	—	—	S	S	—	—
7-passenger seating with removable leather-trimmed second-row captain's chairs with long-slide feature	—	—	—	—	O ²⁴	O ²⁴	—	—
7-passenger seating with removable premium leather-trimmed second-row lounge seat ²⁵ captain's chairs with long-slide feature (FWD models only)	—	—	—	—	—	—	S	S
7-passenger seating with removable premium leather-trimmed second-row captain's chairs with long-slide feature	—	—	—	—	—	—	O ⁷	O ⁷

S = Standard O = Optional — = Not Available P = Feature is available as part of an option package.

See numbered footnotes in Disclosures section.

Features (continued)

INTERIOR (continued)	L	LE	SE	SE PREMIUM	XLE	XLE PREMIUM	LIMITED	LIMITED PREMIUM
Auto Access Seat	—	O	—	—	O	—	—	—
Fabric-trimmed 60/40 Split & Stow 3rd Row™ seat with one-motion stow	S	S	—	—	—	—	—	—
Leatherette-trimmed 60/40 Split & Stow 3rd Row™ seat with one-motion stow	—	—	S	S	S	S	—	—
Premium leatherette-trimmed 60/40 Split & Stow 3rd Row™ seat	—	—	—	—	—	—	O ⁷	O ⁷
Premium leatherette-trimmed power 60/40 Split & Stow 3rd Row™ seat (FWD models only)	—	—	—	—	—	—	S	S
Cruise control	S	S	S	S	S	S	S	S
Dynamic Radar Cruise Control (DRCC) ²⁶	—	—	—	—	—	—	—	P ²⁴
Tilt/telescopic steering wheel with audio, Bluetooth® ¹⁴ hands-free phone and voice-command controls	S	S	—	—	—	—	—	—
Leather-trimmed tilt/telescopic steering wheel with audio, Bluetooth® ¹⁴ hands-free phone and voice-command controls	—	—	S	S	S	S	—	—
Heated leather-trimmed tilt/telescopic steering wheel with audio, Bluetooth® ¹⁴ hands-free phone and voice-command controls	—	—	—	—	—	—	S	S
Speedometer, tachometer, coolant temperature and fuel gauges; 3.5-in. LCD Multi-Information Display screen	S	S	—	—	—	—	—	—
Speedometer, tachometer, coolant temperature and fuel gauges; 4.2-in. color TFT Multi-Information Display screen	—	—	—	—	S	S	S	S
Sport instrumentation with speedometer, tachometer, coolant temperature and fuel gauges; 4.2-in. color TFT Multi-Information Display screen	—	—	S	S	—	—	—	—
Remote keyless entry system with lock, two-stage unlock and panic functions	S	—	—	—	—	—	—	—
Remote keyless entry system with lock, two-stage unlock, panic and power sliding side door functions	—	S	—	—	—	—	—	—
Remote keyless entry system with lock, two-stage unlock, panic, power sliding side door and power liftgate functions	—	—	S	—	—	—	—	—
Smart Key System ²⁷ on all doors with Push Button Start and remote illuminated entry	—	—	P	S	S	S	S	S
Power windows with auto up/down, jam protection in all positions and manual rear quarter windows	S	S	S	S	—	—	—	—
Power windows with auto up/down, jam protection in all positions and power rear quarter windows	—	—	—	—	S	S	S	S
Heavy-duty rear window defogger with timer	S	S	S	S	S	S	S	S
Power door locks with shift-activated locking feature and anti-lockout feature	S	S	S	S	S	S	S	S
Manual second- and third-row sunshades	—	S	S	S	S	S	S	S
Auto-dimming rearview mirror with compass and HomeLink ²⁸ universal transceiver	—	S	S	S	S	S	S	S
Overhead console with maplights and dome lights, conversation mirror and sunglasses storage	S	—	—	—	—	—	—	—
Overhead console with maplights and dome lights, side door controls, conversation mirror and sunglasses storage	—	S	—	—	—	—	—	—
Overhead console with maplights and dome lights, side door and liftgate controls, conversation mirror and sunglasses storage	—	—	S	S	S	S	—	—
Overhead console with maplights and dome lights, side door and liftgate controls, conversation mirror, sunglasses storage and Safety Connect ²⁹	—	—	—	—	—	—	S	S
Fixed center console with illuminated storage compartment, two front illuminated cup holders and two rear cup holders	—	S	S	S	—	—	—	—
Fixed center console with wood-grain-style accents, illuminated storage compartment, two front illuminated cup holders and two rear cup holders	—	—	—	—	S	S	O ⁷	O ⁷
Sliding center console with wood-grain-style accents, illuminated storage compartment, two front illuminated cup holders and two rear cup holders (FWD models only)	—	—	—	—	—	—	S	S
Upper glove compartment and lockable lower glove compartment	S	S	S	S	S	S	S	S
Cargo area storage compartment	S	O ⁷	—	—	O ⁷	O ⁷	S	S
Cargo area storage compartment for second-row center seat	—	S	S	S	S ³⁰	S ³⁰	—	—
Three 12V auxiliary power outlets	S	S	S	S	S	S	S	S
Retractable assist grips at all outboard seating positions	S	S	S	S	S	S	S	S
Dual sun visors with illuminated vanity mirrors	S	S	S	S	S	S	S	S
Six (eight on 8-passenger models) cup holders	S	—	—	—	—	—	—	—
Ten (12 on 8-passenger models) cup holders	—	S	S	S	S	S	S	S
Front- and rear-door map pockets with bottle holders	S	S	S	S	S	S	S	S

S = Standard O = Optional — = Not Available P = Feature is available as part of an option package.

Features (continued)

SAFETY AND CONVENIENCE

	L	LE	SE	SE PREMIUM	XLE	XLE PREMIUM	LIMITED	LIMITED PREMIUM
STAR SAFETY SYSTEM™ Star Safety System™ — includes Enhanced Vehicle Stability Control (VSC) ³¹ Traction Control (TRAC), Anti-lock Brake System (ABS), Electronic Brake-force Distribution (EBD), Brake Assist (BA) ³² and Smart Stop Technology® (SST) ³³ Smart Stop Technology® is designed to automatically reduce engine power when both brake and accelerator pedals are pressed at the same time under certain conditions, helping to bring the vehicle to a stop.	S	S	S	S	S	S	S	S
Vehicle Dynamics Integrated Management (VDIM) system ³⁴	—	—	—	—	—	—	—	P ²⁴
Driver front airbag and front passenger Advanced Airbag System ³⁵	S	S	S	S	S	S	S	S
Driver and front passenger seat-mounted side airbags, driver knee airbag, front passenger seat-cushion airbag and all-row side curtain airbags ³⁵	S	S	S	S	S	S	S	S
Driver and front passenger active headrests ³⁶	S	S	S	S	S	S	S	S
3-point seatbelts for all seating positions; driver-side Emergency Locking Retractor (ELR) and Automatic/Emergency Locking Retractors (ALR/ELR) on all passenger seatbelts	S	S	S	S	S	S	S	S
Adjustable seatbelt anchors on front and outboard second-row seats and driver and front passenger seatbelt pretensioners with force limiters	S	S	S	S	S	S	S	S
Four LATCH (Lower Anchors and Tethers for CHildren) locations: includes lower anchors on outboard second-row seats, and passenger-side and center third-row seats	S	S	S	S	S	S	S	S
Child-protector rear door locks	S	S	S	S	S	S	S	S
High-tensile-strength steel body panels	S	S	S	S	S	S	S	S
Front and rear energy-absorbing crumple zones and side-impact door beams	S	S	S	S	S	S	S	S
Tire Pressure Monitor System (TPMS) ³⁷	S	S	S	S	S	S	S	S
Daytime Running Lights (DRL) with on/off feature	S	S	—	—	S	S	—	—
LED Daytime Running Lights (DRL) with on/off feature	—	—	S	S	—	—	S	S
Safety Connect ^{®29} — includes Emergency Assistance, Stolen Vehicle Locator, Roadside Assistance and Automatic Collision Notification. Available by subscription. Complimentary one-year trial subscription.	—	—	—	—	—	—	S	S
Pre-Collision System (PCS) ³⁸	—	—	—	—	—	—	—	P ²⁴
Rear parking assist sonar ³⁹	—	—	—	—	P	S	—	—
Front and rear parking assist sonar ³⁹	—	—	—	—	—	—	S	S
Blind Spot Monitor (BSM) ⁴ and Rear Cross-Traffic Alert (RCTA) ⁵	—	—	P	S	S	S	S	S
Hill Start Assist Control (HAC) ⁴⁰	—	—	—	—	—	—	—	P ²⁴
Engine immobilizer ⁴¹	S	S	S	S	—	—	—	—
Anti-theft system with alarm and engine immobilizer ⁴¹	—	—	—	—	S	S	S	S
ToyotaCare ⁴² featuring a no cost maintenance plan with roadside assistance ⁴³	—	—	—	—	—	—	—	—

S = Standard O = Optional — = Not Available P = Feature is available as part of an option package.

Specifications

MECHANICAL AND PERFORMANCE

	L	LE	SE/SE PREMIUM	XLE/XLE PREMIUM	LIMITED/LIMITED PREMIUM
ENGINE					
3.5-Liter V6 DOHC 24-Valve with Dual VVT-i; 296 hp @ 6600 rpm, 263 lb.-ft. @ 4700 rpm	Standard	Standard	Standard	Standard	Standard
IGNITION					
Electronic, with Toyota Direct Ignition (TDI)	Standard	Standard	Standard	Standard	Standard
EMISSION RATING					
Ultra Low Emission Vehicle II (ULEV-II)	Standard	Standard	Standard	Standard	Standard
TRANSMISSION					
Direct Shift-8AT Electronically Controlled automatic Transmission with intelligence (ECT-i)	Standard	Standard	Standard	Standard	Standard
DRIVETRAIN					
Front-Wheel Drive (FWD)	Standard	Standard	Standard	Standard	Standard
All-Wheel Drive (AWD) with active torque control	NA	Available	NA	Available	Available
BODY CONSTRUCTION					
Unitized body with anti-vibration sub-frame	Standard	Standard	Standard	Standard	Standard
SUSPENSION					
MacPherson strut front suspension with gas-filled shock absorbers and stabilizer bar; twist-beam rear suspension with coil springs (sport-tuned coil springs on SE model), gas-filled shock absorbers and stabilizer bar	Standard	Standard	Standard	Standard	Standard

See numbered footnotes in Disclosures section.

Specifications (continued)

STEERING	L	LE	SE/SE PREMIUM	XLE/XLE PREMIUM	LIMITED/LIMITED PREMIUM
Electric Power Steering (EPS)	Standard	Standard	NA	Standard	Standard
Sport-calibrated Electric Power Steering (EPS)	NA	NA	Standard	NA	NA
TURNING CIRCLE DIAMETER curb to curb (ft.) (V6 FWD/V6 AWD)	37.5/NA	37.5/37.4	37.5/NA	37.5/37.4	37.5/37.4
BRAKES					
Power-assisted ventilated front and rear disc brakes with Star Safety System™	Standard	Standard	Standard	Standard	Standard
EXTERIOR DIMENSIONS (in.)					
Overall length/width	200.2/78.1	200.2/78.1	200.2/78.1	200.2/78.1	200.2/78.1
Overall height (V6 FWD/V6 AWD)					
unloaded without roof rails	68.9/NA	NA	NA	NA	NA
unloaded with roof rails	NA	70.7/71.3	70.5/NA	70.7/71.3	70.7/71.3
Wheelbase	119.3	119.3	119.3	119.3	119.3
Track (front/rear)	67.7/67.7	67.7/67.7	67.7/67.7	67.7/67.7	67.7/67.7
Ground clearance (V6 FWD/V6 AWD)	6.5/NA	6.5/6.6	6.2/NA	6.5/6.6	6.5/6.6
Coefficient of drag (Cd) (V6 FWD/V6 AWD)	.309/NA	.309/.308	.309/NA	.309/.308	.309/.308
INTERIOR DIMENSIONS front/second-row/third-row seats (in.)					
Head room	41.0/39.7/38.3	41.0/39.7/38.3	41.0/39.7/38.3	NA	NA
with moonroof	NA	NA	39.1/39.7/38.3	39.1/39.7/38.3	NA
with dual moonroof	NA	NA	NA	NA	39.1/38.0/35.9
Shoulder room	65.0/64.6/61.1	65.0/64.6/61.1	65.0/64.6/61.1	65.0/64.6/61.1	65.0/64.6/61.1
Hip room	58.6/66.1/50.3	58.6/66.1/50.3	58.6/66.1/50.3	58.6/66.1/50.3	58.6/66.1/50.3
Leg room	40.5/37.6/36.3	40.5/37.6/36.3	40.5/37.6/36.3	40.5/37.6/36.3	40.5/37.6/36.3
WEIGHTS/CAPACITIES					
Curb weight (lb.)					
V6 FWD	4375	4450	4560	4540	4560
V6 AWD	NA	4615	NA	4705	4705
Cargo volume ⁴⁴ (cu. ft.) behind front/second-row/third-row seats	150.0/87.1/39.1	150.0/87.1/39.1	150.0/87.1/39.1	150.0/87.1/39.1	150.0/87.1/39.1
Fuel tank (gal.)	20	20	20	20	20
Seating capacity (FWD/AWD)	7/NA	8/7	8/NA	8/7	7/7
TOWING					
Tow Prep Package — includes engine oil cooler, plus heavy-duty radiator and fan; tow hitch and receiver not included					
V6 FWD	Standard	Standard	Standard	Standard	Standard
V6 AWD	NA	Standard	NA	NA	NA
Towing capacity (lb.) ⁴⁵					
V6 FWD	3500	3500	3500	3500	3500
V6 AWD	NA	3500	NA	NA	NA
TIRES					
Spare — Temporary	Standard	Standard ⁴⁶	Standard	Standard ⁴⁶	Standard ⁴⁶
Run-flat tires	NA	Optional	NA	Optional	Optional
MILEAGE ESTIMATES (city/highway)					
V6 FWD ⁴⁷	19/27	19/27	19/27	19/27	19/27
V6 AWD ⁵³	NA	18/24	NA	18/24	18/24

Packages/Options

SE

SE Preferred Package — includes Blind Spot Monitor (BSM)⁴ and Rear Cross-Traffic Alert (RCTA);⁵ Smart Key System²⁷ on all doors with Push Button Start and remote illuminated entry, chrome-accented outside door handles with touch-sensor lock/unlock feature, power tilt/slide moonroof with sunshade, Driver Easy Speak and Entune™ Premium Audio with Integrated Navigation¹⁹ and App Suite²⁰ — includes Entune™ Multimedia Bundle⁹ (7-in. high-resolution touch-screen with split-screen display, AM/FM CD player with MP3/WMA playback capability, six speakers, auxiliary audio jack, USB 2.0 port¹⁰ with iPod^{®11} connectivity and control, advanced voice recognition,¹² hands-free phone capability, phone book access and music streaming¹³ via *Bluetooth*^{®14} wireless technology), Entune® App Suite,²⁰ HD Radio™ Technology,¹⁸ HD Radio™ Predictive Traffic and Doppler Weather overlay, AM/FM cache radio, Siri® Eyes Free,¹⁵ SiriusXM® Satellite Radio¹⁷ with 3-month complimentary SiriusXM All Access trial, Gracenote® album cover art and integrated backup camera display.⁸ Access to Entune® App Suite²⁰ is subscription-free. See toyota.com/entune for details.

Power tilt/slide moonroof with sunshade

XLE

XLE Mobility Navigation Package — includes rear parking assist sonar,³⁹ Driver Easy Speak and Entune™ Premium Audio with Integrated Navigation¹⁹ and App Suite²⁰ — includes Entune™ Multimedia Bundle⁹ (7-in. high-resolution touch-screen with split-screen display, AM/FM CD player with MP3/WMA playback capability, six speakers, auxiliary audio jack, USB 2.0 port¹⁰ with iPod^{®11} connectivity and control, advanced voice recognition,¹² hands-free phone capability, phone book access and music streaming¹³ via *Bluetooth*^{®14} wireless technology), Entune® App Suite,²⁰ HD Radio™ Technology,¹⁸ HD Radio™ Predictive Traffic and Doppler Weather overlay, AM/FM cache radio, Siri® Eyes Free,¹⁵ SiriusXM® Satellite Radio¹⁷ with 3-month complimentary SiriusXM All Access trial, Gracenote® album cover art and integrated backup camera display.⁸ Access to Entune® App Suite²⁰ is subscription-free. See toyota.com/entune for details.

XLE Navigation Package — includes rear parking assist sonar,³⁹ Driver Easy Speak and Entune™ Premium Audio with Integrated Navigation¹⁹ and App Suite²⁰ — includes Entune™ Multimedia Bundle⁹ (7-in. high-resolution touch-screen with split-screen display, AM/FM CD player with MP3/WMA playback capability, six speakers, auxiliary audio jack, USB 2.0 port¹⁰ with iPod^{®11} connectivity and control, advanced voice recognition,¹² hands-free phone capability, phone book access and music streaming¹³ via *Bluetooth*^{®14} wireless technology), Entune® App Suite,²⁰ HD Radio™ Technology,¹⁸ HD Radio™ Predictive Traffic and Doppler Weather overlay, AM/FM cache radio, Siri® Eyes Free,¹⁵ SiriusXM® Satellite Radio¹⁷ with 3-month complimentary SiriusXM All Access trial, Gracenote® album cover art and integrated backup camera display.⁸ Access to Entune® App Suite²⁰ is subscription-free. See toyota.com/entune for details.

XLE Mobility Premium Package — includes Dual-View Blu-ray Disc™ Entertainment Center²² with 16.4-in. display, RCA jacks, SD card and HDMI inputs, two 120V AC power outlets, remote and two wireless headphones,²³ rear parking assist sonar,³⁹ Driver Easy Speak and Entune™ Premium Audio with Integrated Navigation¹⁹ and App Suite²⁰ — includes Entune™ Multimedia Bundle⁹ (7-in. high-resolution touch-screen with split-screen display, AM/FM CD player with MP3/WMA playback capability, six speakers, auxiliary audio jack, USB 2.0 port¹⁰ with iPod^{®11} connectivity and control, advanced voice recognition,¹² hands-free phone capability, phone book access and music streaming¹³ via *Bluetooth*^{®14} wireless technology), Entune® App Suite,²⁰ HD Radio™ Technology,¹⁸ HD Radio™ Predictive Traffic and Doppler Weather overlay, AM/FM cache radio, Siri® Eyes Free,¹⁵ SiriusXM® Satellite Radio¹⁷ with 3-month complimentary SiriusXM All Access trial, Gracenote® album cover art and integrated backup camera display.⁸ Access to Entune® App Suite²⁰ is subscription-free. See toyota.com/entune for details.

LIMITED

Limited Advanced Technology Package — includes Dynamic Radar Cruise Control (DRCC);²⁶ Pre-Collision System (PCS);³⁸ Vehicle Dynamics Integrated Management (VDIM)³⁴ and Hill Start Assist Control (HAC)⁴⁰

AVAILABLE ON ALL MODELS

Outdoor Package — includes roof rail cross bars,⁴⁴ all-weather floor mats,⁴⁸ mudguards and doorsill protectors

Toyota strives to build vehicles to match customer interest and thus they typically are built with popular options and option packages. Not all options/packages are available separately and some may not be available in all regions of the country. See toyota.com for information about options/packages commonly available in your area. If you would prefer a vehicle without any or with different options, contact your dealer to check for current availability or the possibility of placing a special order.

Some vehicles are shown with available equipment. Seatbelts should be worn at all times. Please do not allow passengers to ride in the cargo area. For details on vehicle specifications, standard features and available equipment in your area, contact your Toyota dealer. A vehicle with particular equipment may not be available at the dealership. Ask your Toyota dealer to help locate a specifically equipped vehicle.

All information presented herein is based on data available at the time of posting, is subject to change without notice and pertains specifically to mainland U.S.A. vehicles only. Prototypes shown. Actual production vehicles may vary.

WARRANTIES

Every Toyota Car, Truck and SUV is built to exceptional standards. And that's not idle boasting. We back it up with these Limited Warranty Coverages:

Basic: 36 months/36,000 miles (all components other than normal wear and maintenance items).

Powertrain: 60 months/60,000 miles (engine, transmission/transaxle, drive system, seatbelts and airbags).

Rust-Through: 60 months/unlimited miles (corrosion perforation of sheet metal).

Emissions: Coverages vary under Federal and California regulations. Refer to applicable *Warranty and Maintenance Guide* for details.

Accessories: For Genuine Toyota Accessories purchased at the time of the new vehicle purchase, the Toyota Accessory Warranty coverage is in effect for 36 months/36,000 miles from the vehicle's in-service date, which is the same coverage as the Toyota New Vehicle Limited Warranty.

For Genuine Toyota Accessories purchased after the new vehicle purchase the coverage is 12 months, regardless of mileage, from the date the accessory was installed on the vehicle, or the remainder of any applicable new vehicle warranty, whichever provides greater coverage, with the exception of car covers. Car covers are warranted for 12 months from the date of purchase and do not assume any coverage under the Toyota New Vehicle Limited Warranty. You may be eligible for transportation assistance if it's necessary that your vehicle be kept overnight for repairs covered under warranty. Please see your authorized Toyota dealership for further details.

For complete details about Toyota's warranties, please visit www.toyota.com, refer to the applicable *Warranty and Maintenance Guide* or see your Toyota dealer.



For Toyota Mobility program details, go to www.toyota.com/mobility or call the Toyota Customer Assistance Center at 1-800-331-4331

See numbered footnotes in Disclosures section.

CARS BUILT FOR THE WAY YOU LIVE

At Toyota, we build cars for how you live. From building advanced safety features designed to help prevent crashes to driving cross-country to understand how we can make your driving experience better, our work starts with understanding your needs. Building cars for how you live also means thinking about tomorrow — from fuel efficiency and environmental innovations, to things beyond cars, like a bicycle that you can control with your mind. And because what we learn building cars can help improve lives in other places, we do things like help communities rebuild their homes quickly after a disaster and work with soup kitchens to help them serve more people faster. Toyota. Built for how you live. Together we are going places.

DISCLOSURES

1. Toyota strives to build vehicles to match customer interest and thus they typically are built with popular options and option packages. Not all options/packages are available separately and some may not be available in all regions of the country. See toyota.com for information about options/packages commonly available in your area. If you would prefer a vehicle without any or with different options, contact your dealer to check for current availability or the possibility of placing a special order. 2. Automatic High Beams operate at speeds above 25 mph. Factors such as a dirty windshield, weather, lighting and terrain limit effectiveness, requiring the driver to manually operate the high beams. See *Owner's Manual* for details. 3. Do not rely exclusively on the blind spot mirrors. Always look over your shoulder and use your turn signal. There are limitations to the function, detection, range and clarity of the mirrors. See *Owner's Manual* for details. 4. Do not rely exclusively on the Blind Spot Monitor. Always look over your shoulder and use your turn signal. There are limitations to the function, detection, range and clarity of the monitor. See *Owner's Manual* for details. 5. Do not rely exclusively on the Rear Cross-Traffic Alert system. Always look over your shoulder and use your mirrors to confirm rear clearance. There are limitations to the function, detection, range and clarity of the system. See *Owner's Manual* for details. 6. Power liftgate available on LE for Auto Access model only. 7. AWD models only. 8. The backup camera does not provide a comprehensive view of the rear area of the vehicle. You should also look around outside your vehicle and use your mirrors to confirm rearward clearance. Environmental conditions may limit effectiveness and view may become obscured. See *Owner's Manual* for details. 9. Entune™ is a trademark of Toyota Motor Corporation. Always drive safely, obey traffic laws and focus on the road while driving. Services vary by phone/carrier. Functionality depends on many factors. Services subject to change. For enrollment and more details, see toyota.com/entune. 10. May not be compatible with all mobile phones, MP3/WMA players and like models. 11. iPod® and iPhone® are registered trademarks of Apple Inc. All rights reserved. 12. Advanced voice recognition capabilities vary by head unit. 13. Apps/services vary by phone/carrier; functionality depends on many factors. Select apps use large amounts of data; you are responsible for charges. Apps and services subject to change. See toyota.com/entune for details. 14. Concentrating on the road should always be your first priority while driving. Do not use the hands-free phone system if it will distract you. The Bluetooth® word mark and logos are registered trademarks owned by Bluetooth SIG, Inc. and any use of such marks by Toyota is under license. A compatible Bluetooth®-enabled phone must first be paired. Phone performance depends on software, coverage and carrier. 15. Always drive safely, obey traffic laws and focus on the road while driving. Siri® is available only on iPhone® 4S or later, iPad® with Retina® display, iPad mini™, and iPod touch® (5th generation) and requires Internet access. Siri® is not available in all languages or all areas, and features vary by area. Some Siri® functionality and commands are not accessible in the vehicle. Data charges may apply. See apple.com and phone carrier for details. Siri® is a registered trademark of Apple Inc. 16. Be sure to obey traffic regulations and maintain awareness of road and traffic conditions at all times. Apps/services vary by phone/carrier; functionality depends on many factors. Select apps use large amounts of data; you are responsible for charges. Apps and services subject to change. Availability and accuracy of the information provided by Scout® GPS Link is dependent upon many factors. Use common sense when relying on information provided. Services and programming subject to change. Services not available in every city or roadway. See toyota.com/entune for details. Scout® is a registered trademark of Telenav, Inc. 17. SiriusXM® services require a subscription after 3-month trial period. **Subscriptions governed by SiriusXM Customer Agreement available at www.siriusxm.com. If you decide to continue your SiriusXM® service at the end of your complimentary trial, the plan you choose will automatically renew and bill at then-current rates until you call 1-866-635-2349 to cancel.** Fees and programming subject to change. Available only to those at least 18 years of age in the 48 contiguous United States and D.C. 18. Be sure to obey traffic regulations and maintain awareness of road and traffic conditions at all times. HD Radio™ Technology manufactured under license from iBiquity Digital Corporation U.S. and Foreign Patents. HD Radio™ and the HD, HD Radio, and “Arc” logos are proprietary trademarks of iBiquity Digital Corp. 19. Availability and accuracy of the information provided by the navigation system is dependent upon many factors. Use common sense when relying on information provided. Services and programming subject to change. Services not available in every city or roadway. Updates may be available from your dealer at an additional cost. See *Owner's Manual* for details. 20. Be sure to obey traffic regulations and maintain awareness of road and traffic conditions at all times. Apps/services vary by phone/carrier; functionality depends on many factors. Select apps use large amounts of data; you are responsible for charges. Apps and services subject to change. See toyota.com/entune for details. 21. PANDORA®, the PANDORA® logo, and the Pandora trade dress are trademarks or registered trademarks of Pandora Media, Inc., used with permission. 22. A Blu-ray Disc™/DVD player is standard. A separate Blu-ray Disc™/DVD player or game system utilizing the center console's video/audio inputs is required in order to use the split-screen function of the Dual-View system. 23. Headphones are for passenger use only. Do not use while driving vehicle. 24. FWD models only. 25. Lounge seating is standard on Sienna Limited FWD models and not available on any other models. Do not use the ottoman feature when the vehicle is in motion. Only use when the vehicle is stationary. If the ottoman feature is in use during an accident the lap belt may slide past the hips. This could also result in restraint forces being applied directly to the abdomen or your neck may contact the shoulder belt, increasing the risk of death or serious injury. See *Owner's Manual* for details. 26. Dynamic Radar Cruise Control is designed to assist the driver and is not a substitute for safe and attentive driving practices. System effectiveness depends on many factors, such as weather, traffic and road conditions. See *Owner's Manual* for details. 27. The Smart Key System may interfere with some pacemakers or cardiac defibrillators. If you have one of these medical devices, please talk to your doctor to see if you should deactivate this system. 28. HomeLink® and the HomeLink® house icon are registered trademarks of Gentex Corporation. 29. Contact with the Safety Connect® response center is dependent upon the telematics device being in operative condition, cellular connection availability, navigation map data and GPS satellite signal reception, which can limit the ability to reach the response center or receive emergency service support. Enrollment and Telematics Subscription Service Agreement required. A variety of subscription terms is available; charges vary by subscription term selected. 30. Not available with AWD models. 31. Vehicle Stability Control is an electronic system designed to help the driver maintain vehicle control under adverse conditions. It is not a substitute for safe driving practices. Factors including speed, road conditions and driver steering input can all affect whether VSC will be effective in preventing a loss of control. See *Owner's Manual* for details. 32. Brake Assist is designed to help the driver take full advantage of the benefits of ABS. It is not a substitute for safe driving practices. Braking effectiveness also depends on proper brake-system maintenance and tire and road conditions. See *Owner's Manual* for details. 33. Smart Stop Technology® operates only in the event of certain contemporaneous brake and accelerator pedal applications. When engaged, the system will reduce power to help the brakes bring the vehicle to a stop. Factors including speed, road conditions and driver input can all impact stopping distance. Smart Stop Technology® is not a substitute for safe and attentive driving and does not guarantee instant stopping. See *Owner's Manual* for details. 34. Vehicle Dynamics Integrated Management (VDIM) is an electronic system designed to help the driver maintain vehicle control under adverse conditions. It is not a substitute for safe driving practices. Factors including speed, road conditions and driver steering input can all affect whether VDIM will be effective in preventing a loss of control. See *Owner's Manual* for details. 35. All the airbag systems are Supplemental Restraint Systems. All airbags (if installed) are designed to inflate only under certain conditions and in certain types of severe collisions: typically, frontal and knee airbags inflate in frontal collisions, side torso and side curtain airbags inflate in side collisions and roll-sensing curtain airbags inflate at a severe roll angle or roll rate. To decrease the risk of injury from an inflating airbag, always wear seatbelts, sit upright in the middle of the seat as far back as possible and do not lean against the door. Do not put objects in front of an airbag or around the seatback. Do not use a rearward-facing child seat in any front passenger seat. The force of an inflating airbag may cause serious injury or death. See your *Owner's Manual* for further information/warnings. 36. Active front headrests can help reduce the extent of whiplash in certain types of rear-end collisions. 37. The Toyota Tire Pressure Monitor alerts the driver when tire pressure is critically low. For optimal tire wear and performance, tire pressure should be checked regularly with a gauge; do not rely solely on the monitor system. See *Owner's Manual* for details. 38. The Pre-Collision System is designed to help reduce the crash speed and damage in certain frontal collisions only. It is not a collision-avoidance system and is not a substitute for safe and attentive driving. System effectiveness depends on many factors, such as speed, driver input and road conditions. See *Owner's Manual* for details. 39. Do not exclusively rely on the parking assist sonar system. Always look over your shoulder and use your mirrors to confirm clearance. Certain vehicle and environmental conditions may affect the ability of the sensors to detect an object. Even the shape and composition of the object can be a factor. See *Owner's Manual* for details. 40. Hill Start Assist Control is designed to help minimize backward rolling on steep ascents. It is not a substitute for safe driving judgment and practices. Factors including grade, surface conditions and driver input can all affect whether HAC will be effective in preventing a loss of control. See *Owner's Manual* for details. 41. The engine immobilizer is a state-of-the-art anti-theft system. When you insert your key into the ignition switch or bring a Smart Key fob into the vehicle, the key transmits an electronic code to the vehicle. The engine will only start if the code in the transponder chip inside the key/fob matches the code in the vehicle's immobilizer. Because the transponder chip is embedded in the key/fob, it can be costly to replace. If you lose a key or fob, your Toyota dealer can help, or you can find a qualified independent locksmith to perform high-security key services by consulting your local Yellow Pages or by contacting www.aloa.org. 42. ToyotaCare covers normal factory scheduled service for 2 years or 25,000 miles, whichever comes first. 24-hour roadside assistance is also included for 2 years and unlimited miles. See Toyota dealer for details and exclusions. Valid only in the continental U.S. and Alaska. 43. Does not include parts and fluids, except emergency fuel delivery. Valid only in the continental U.S. and Alaska. 44. Cargo and load capacity limited by weight and distribution. 45. Before towing, confirm your vehicle and trailer are compatible, hooked up and loaded properly and that you have any necessary additional equipment. Do not exceed any Weight Ratings and follow all instructions in your *Owner's Manual*. The maximum you can tow depends on base curb weight plus the total weight of any cargo, occupants, and added vehicle equipment. “Added vehicle equipment” includes additional standard/optional equipment and accessories added by the manufacturer, dealers, and/or vehicle owners. The only way to be certain of your vehicle's exact curb weight is to weigh your vehicle without passengers or cargo. 46. Models equipped with All-Wheel Drive replace standard wheels and tires with 18-in. 10-spoke machined alloy wheels with P235/55RF18 run-flat tires and do not include a spare tire. 47. 2017 EPA-estimated 19 city/27 highway/22 combined mpg for Sienna FWD. Actual mileage will vary. 48. This floor mat was designed specifically for use in your model and model year vehicle and SHOULD NOT be used in any other vehicle. To avoid potential interference with pedal operation, each mat must be secured with fasteners. Do not install a floor mat on top of an existing floor mat. 49. Front and rear sonar standard on Limited. Rear sonar available on XLE. 50. The Toyota Genuine Accessory Warranty will only apply when the installation is performed by a trained Toyota-approved installer. Please see dealer for details. 51. Available only for vehicles equipped with remote keyless entry system or Smart Key System. Use only if aware of circumstances surrounding the vehicle at time of start. Operate only when legal and safe to do so (e.g., car uncovered in open area with no people or pets inside or nearby). See *Owner's Manual* for details. 52. Available only with vehicles with factory remote keyless entry system. 53. 2017 EPA-estimated 18 city/24 highway/20 combined mpg for Sienna AWD. Actual mileage will vary.