

2017 Sequoia




TOYOTA | *Let's
Go
Places*

For the family that plays harder. The 2017 Toyota Sequoia.

Let's make some family memories that don't rely on a Wi-Fi signal. Meet the commanding 2017 Toyota Sequoia, the SUV built to inspire your kids' most-liked status updates. Sequoia provides seating for up to eight,³⁴ along with the cargo room you want for everyone's gear. Inside, its host of high-tech features gives your family the ultimate in convenience and comfort. And to help bring your dream adventures to life, Sequoia offers a powerful V8 engine and genuine all-terrain capability. Sequoia gets the job done and helps you live the lifestyle you love with room to spare. Now when you share the family blog everyone will be impressed. Let's go places.



Sequoia has the room to
make weekends with
the family bigger than ever.
Now let's make some
larger-than-life memories.

Platinum 4x4 shown in Silver Sky Metallic.

See numbered footnotes in Disclosures section.

120 cubic feet of family room.⁴

Sequoia's big cabin offers much more than just space. There's comfortable seating for up to eight³⁴ with the standard third row, and a variety of seating configurations to handle any combination of passengers and payload. Or fold all the seats flat and reveal 120 cubic feet of cargo capacity—perfect for that drum kit, those home improvement materials or that eight-person tent.



Sequoia's reclining third-row seat is wide enough for three adults to ride in real comfort. Or utilize its 60/40 split-fold versatility to quickly accommodate both people and cargo.



As you might expect, the sliding second row is versatile too. Its 40/20/40 split-fold design lets second-row passengers slide their seat to match their own idea of leg room.



The second row also features one-touch access to the third row. When entering the passenger-side door, simply pull the lever on the outside of the second-row seat, which simultaneously folds and slides forward to make entry a breeze.

SR5 4x4 interior shown in Graphite.

See numbered footnotes in Disclosures section.



Platinum 4x4 interior shown in Red Rock.



VERSATILITY AND CIVILITY

There's more to Sequoia's interior than meets the eye. There's also a hidden storage compartment under the rear floor, a 12V auxiliary power outlet and grocery bag hooks. Third-row passengers will find cup holders, personal storage and, on Limited and Platinum, retractable sunshades.

If only your work schedule were this flexible.

No matter what you've got planned, Sequoia is happy to oblige. Both the sliding second-row and third-row seats fold flat, making it easy to load and unload all the gear your road trip requires. And the split-fold seat design lets you choose how to stow your cargo: upright or flat. Of course, with its spacious interior, reclining third-row seats and available second-row console, Sequoia is as accommodating to passengers as it is to cargo. So what are you waiting for?



POWER³⁵ RECLINING AND FOLD-FLAT THIRD-ROW SEAT

When it comes to comfort, the available power reclining and fold-flat third-row seat will make settling in for the long haul as easy as pushing a button.



FRONT-SEAT CONSOLE

The front-seat console on the Platinum edition offers climate controls and cup holders for those in the second row. There are also RCA jacks for the rear-seat Blu-ray Disc™ player and a handy 115V AC power outlet.



AUTOMATIC POWER LIFTGATE

Closing the available power liftgate is equally convenient. You can press a button inside the cargo area, on the dash, or use the key fob, and it will close automatically.

SECTION NAME



Platinum 4x4 interior shown in Graphite.

Tell your neighbors you spent the weekend “roughing it.”

Judging by the pamphlets you brought back from Death Valley and the Badlands, your friends might think you had just subjected your family to an inhospitable ordeal. How wrong they’d be. In addition to the available heated/ventilated driver and front passenger seats offered in Sequoia Platinum, there’s also a standard³⁶ rear-seat Blu-ray Disc™ player. And when it’s time to depart, simply set the standard³⁷ Dynamic Laser Cruise Control (DLCC)²³ and let your “adventure” unfold.



REAR-SEAT BLU-RAY DISC™ PLAYER

Sequoia’s second-row seat will have your kids hoping they’re not there yet. That’s because they can watch the latest movies or play video games on the available rear-seat Blu-ray Disc™ player with 9-in. display. Plus, all their movies and games will stow tidily away in Sequoia’s many storage compartments. And to keep front-seat occupants from feeling left out, Sequoia offers an excellent JBL Synthesis® audio system with 14 speakers.



ENTUNE™ PREMIUM AUDIO WITH INTEGRATED NAVIGATION²¹ AND APP SUITE¹⁵

Sequoia takes high tech even higher with the available new Entune™ Premium Audio system with Integrated Navigation and App Suite. With the Entune® App Suite, you have a collection of popular apps including Destination Search, iHeartRadio, MovieTickets.com, OpenTable®, Pandora®,¹⁶ Yelp® Facebook Places and Slacker Radio — all just a touch away. Need info on your stocks, weather, sports or fuel prices? No problem. Real-time info is included, even your local weather forecast to help plan your day. Sequoia Platinum takes it one step further with JBL® speakers and amplifier for crisp, dynamic sound that delivers a powerful punch.



STORAGE COMPARTMENTS

In addition to its vast cargo area and a multitude of cup holders, Sequoia offers a variety of other storage options. The dual-level glove compartment has a large compartment below for, well — large things — and a smaller compartment above for documents and other flat items.

You planned your trip. We planned your return.

With Sequoia, one thing you'll never leave behind is peace of mind. Sequoia's equipped with an array of active safety features to help you avoid trouble, and passive safety features to help protect you if trouble proves unavoidable. It also offers features such as available Dynamic Laser Cruise Control (DLCC).²² While not technically a safety feature, DLCC automatically adjusts vehicle speed to help maintain a preset distance between you and the vehicle in front of you. We go to these lengths because, as with any excursion, there's no substitute for preparation.



COMPREHENSIVE AIRBAG SYSTEM²⁷

Not all collisions call for maximum airbag deployment. Sequoia's sophisticated system is designed to provide appropriate protection based on the situation. In certain types of frontal collisions, the standard driver and front passenger Advanced Airbag System senses impact severity, adjusting airbag deployment accordingly.



STAR SAFETY SYSTEMTM

Sequoia comes standard with the Star Safety System,TM a suite of six advanced safety features designed to help keep drivers out of harm's way. The system includes Vehicle Stability Control (VSC);²⁵ Traction Control (TRAC), Anti-lock Brake System (ABS), Electronic Brake-force Distribution (EBD), Brake Assist (BA)³ and Smart Stop Technology[®] (SST).²⁶



TIRE PRESSURE MONITOR SYSTEM (TPMS)²⁸

The Tire Pressure Monitor System (TPMS) evaluates the pressure of the tires. When pressure is critically low, the monitor issues a warning, allowing the driver to address concerns.



ADVANCED CONTROL TECHNOLOGIES

An Anti-lock Brake System (ABS) helps prevent brakes from locking up, while the sophisticated Vehicle Stability Control (VSC)²⁵ helps prevent front and rear wheelslip by monitoring your steering angle and comparing it to the direction in which your vehicle is traveling.

3-POINT SEATBELTS

All seats offer 3-point seatbelts. The front seats have pretensioners and force limiters, while second-row seats have an adjustable shoulder anchor and pretensioner on outboard seats.

LATCH

LATCH (Lower Anchors and Tethers for CHildren) includes lower anchors on all second-row seats and tether anchors on all second-row seats and the center seat in the third row.

Photo not intended to replicate actual inflated airbags.²⁷ See numbered footnotes in Disclosures section.

CAPABILITY

Built to turn family outings into family way-outings.

When you take your family into the sticks, you need a vehicle that's strong and reliable. Precisely what you get with Sequoia. It's forged on a fully boxed frame for strength and durability. It also boasts an available 381-hp 5.7L V8 with up to 7400 lb. of towing capacity.⁵ Plus, a TOW/HAUL Mode that selects transmission shift points to optimize that power. So grab the gang and the gear. Where you're going, you won't need to fight for a space to put the picnic blanket.



Limited 4x4 shown in Black.⁵

Do not overload your vehicle. See *Owner's Manual* for weight limits and restrictions. See numbered footnotes in Disclosures section.



POWERFUL V8 ENGINE

Sequoia comes standard with an all-aluminum 5.7L V8 that puts out 381 hp and 401 lb.-ft. of torque. Plus, this powerplant has received an Ultra Low Emission Vehicle II (ULEV-II) rating, because with power comes responsibility.

ELECTRONICALLY MODULATED AIR SUSPENSION

Maintaining ride height is important when the vehicle is carrying many passengers or a lot of cargo weight. That's why Sequoia's Platinum model features Electronically Modulated Air Suspension. It allows the driver to adjust ride height to compensate for changes in load. So Sequoia's ride is always the same: smooth.

BLIND SPOT MONITOR (BSM)²⁹ LANE CHANGE ASSIST

Even with adjusted side mirrors, adjacent vehicles may enter "blind spot" areas to the side and rear of the vehicle that are outside of view. Sequoia's Blind Spot Monitor system, standard on Platinum, optional on Limited, uses radar to scan these blind spots for other vehicles.

TRAILER-SWAY CONTROL (TSC)³⁰

When towing, winds or load undulation can cause trailer sway. TSC is designed to apply brake pressure at individual wheels and manage engine torque to help the driver maintain control of the trailer.

SR5 4x4 shown in Silver Sky Metallic.

See numbered footnotes in Disclosures section.



An available 5.7L V8 E85 Flex Fuel¹ engine makes Sequoia an alternative fuel vehicle.

MULTI-MODE 4WD

This available system can turn mountains into molehills. Just turn the shift dial to engage the 4WD mode and let the Torsen^{®3} limited-slip center differential go to work. The differential locks up to get maximum traction on slippery or uneven surfaces.

FRONT AND REAR SUSPENSION

Sequoia's independent double-wishbone front and rear suspension gives you the best of both worlds: responsive handling on pavement and a smoother ride off-road. This sophisticated suspension utilizes low-pressure gas-filled shock absorbers and hollow stabilizer bars. Also enhancing Platinum's on-road performance is Adaptive Variable Suspension (AVS) with three settings ranging from "comfort" to "sport."

AUTOMATIC LIMITED-SLIP DIFFERENTIAL (AUTO LSD)³⁸

Sequoia's advanced Automatic Limited-Slip Differential (Auto LSD) uses the brakes to help reduce wheelspin and enhance traction performance on unpredictable road surfaces like sand or mud.



SR5

Exterior

- Multi-reflector halogen headlights with auto-off feature and headlight cleaners
- Integrated fog lights
- Color-keyed heated power outside mirrors
- 18-in. alloy wheels
- Power tilt/slide moonroof with sliding sunshade

Interior

- Automatic three-zone front and rear climate control with air filter
- Entune™ Multimedia Bundle⁹ includes AM/FM CD player with MP3/WMA playback capability, touch-screen display, aux jack, USB 2.0 port⁹
- Easy-clean fabric-trimmed front seats; 8-way power-adjustable driver's seat; 4-way adjustable front passenger seat
- Easy-clean fabric-trimmed 40/20/40 split, sliding, reclining, fold-flat second-row seat with one-touch access to third-row seat
- Multi-function center console with two front and two rear cup holders, two 12V auxiliary power outlets, sliding covered armrest and storage compartment

Options

- Entune™ Premium Audio with Integrated Navigation²¹ and App Suite¹⁵
- Auto-dimming rearview mirror with compass and HomeLink^{®24} universal transceiver
- Sport Package — includes 20-in. Super Chrome alloy wheels, color-keyed grille surround and 7-passenger seating with second-row captain's chairs
- Premium Package — includes 8-passenger leather-trimmed seats, heated 10-way power-adjustable driver's seat, 4-way power-adjustable front passenger seat, power reclining and fold-flat third-row seating, front and rear parking assist sonar³⁰
- 7- or 8-passenger seating



Limited

Adds to or replaces features on SR5.

Exterior

- Chrome auto-dimming heated power outside mirrors with power folding feature and turn signal indicators
- Power liftgate with jam protection
- 20-in. alloy wheels

Interior

- Entune™ Premium Audio with Integrated Navigation²¹ and App Suite¹⁵
- Leather-trimmed and heated front seats; 10-way power-adjustable driver's seat; 4-way power-adjustable front passenger seat
- Leather-trimmed 40/20/40 split, sliding, reclining, fold-flat second-row seat with one-touch access to third-row seat
- Leather-trimmed tilt/telescopic steering wheel with audio, Siri[®] Eyes Free¹⁷ and Bluetooth^{®12} hands-free phone controls
- Optitron instrumentation with speedometer and tachometer; LCD display with odometer and tripmeters
- Auto-dimming rearview mirror with compass and HomeLink^{®24} universal transceiver

Options

- Rear-seat Blu-ray Disc™ player with 9-in. display, two wireless headphones,²² wireless remote and rear audio system with 115V AC power outlet and RCA jacks
- Entune™ Premium JBL[®] Audio with Integrated Navigation²¹ and App Suite¹⁵ — includes Entune™ Premium Audio and App Suite plus JBL[®] speakers and amplifier
- 7- or 8-passenger seating
- Safety & Convenience Package — includes Blind Spot Monitor (BSM)²⁹ lane change assist, two-position power memory driver's seat and memory outside mirrors



Platinum

Adds to or replaces features on Limited.

Exterior

- Blind Spot Monitor (BSM)²⁹ lane change assist
- 20-in. diamond-cut-finish alloy wheels

Interior

- Entune™ Premium JBL[®] Audio with Integrated Navigation²¹ and App Suite¹⁵
- Rear-seat Blu-ray Disc™ player with 9-in. display, two wireless headphones,²² wireless remote and rear audio system with 115V AC power outlet and RCA jacks
- Perforated leather-trimmed heated and ventilated front seats; 10-way power-adjustable driver's seat with power thigh and lumbar support; 4-way power-adjustable front passenger seat
- 7-passenger seating with perforated leather-trimmed and heated second-row captain's chairs and multi-function center console
- Perforated leather-trimmed second-row heated captain's chairs with multi-function center console
- Perforated leather-trimmed 60/40 split, power reclining, fold-flat third-row seat with folding headrests

Color



Black



Sizzling Crimson Mica



Sandy Beach Metallic



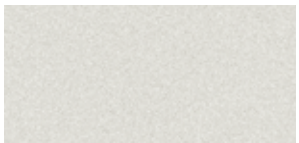
Pyrite Mica



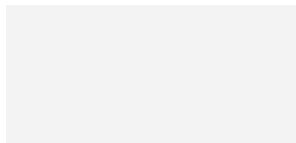
Magnetic Gray Metallic



Silver Sky Metallic



Blizzard Pearl⁴⁰



Super White⁴¹

Trim

Also available in:



SR5 easy-clean fabric shown in Black³⁹



Graphite

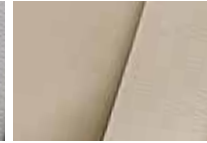


Sand Beige

Also available in:



Limited leather trim shown in Graphite



Sand Beige

Also available in:



Platinum perforated leather trim shown in Graphite



Sand Beige



Red Rock⁴²

Wheels



SR5 standard 18-in. alloy wheel



SR5 available 20-in. Sport alloy wheel



Limited standard 20-in. alloy wheel



Platinum standard 20-in. diamond-cut-finish alloy wheel

*Not all colors and trims available on all model grades. See dealer for details. See numbered footnotes in Disclosures section.

ACCESSORIES

Because no two families are alike. A wide range of Genuine Toyota Accessories is available to help you make your Sequoia your own. Considering how appealing Sequoia is to begin with, these quality products will be like icing on the cake. Some accessories may not be available in all regions of the country. See your Toyota dealer for details.

Alloy wheel locks
All-weather cargo liner⁴
All-weather floor liners⁴³
Ashtray cup
Cargo cover⁴

Cargo net — envelope⁴
Cargo tote⁴
Carpet cargo mat⁴
Carpet floor mats⁴³
Doorsill protectors

Emergency assistance kit
First aid kit
Front skid plate
Glass Breakage Sensor (GBS)
Hood protector

Paint protection film⁴⁴ — hood & fender
Remote Engine Starter
Trailer ball and ball mount
Universal tablet holder



All-weather cargo liner⁴



All-weather floor liners⁴³



Hood protector



Doorsill protectors



Front skid plate



Cargo net — envelope⁴



Remote Engine Starter



Universal tablet holder (tablet device not included)

SPECIFICATIONS

MECHANICAL AND PERFORMANCE

	SR5	LIMITED	PLATINUM
Engine			

5.7-Liter i-FORCE V8 DOHC 32-Valve with Dual Independent Variable Valve Timing with intelligence (VVT-i); 381 hp @ 5600 rpm; 401 lb.-ft. @ 3600 rpm	Standard	Standard	Standard
---	----------	----------	----------

5.7-Liter i-FORCE V8 DOHC E85 Flex Fuel ¹ 32-Valve with Dual Independent Variable Valve Timing with intelligence (VVT-i); 381 hp @ 5600 rpm; 401 lb.-ft. @ 3600 rpm	Available ⁴	Available ⁴	Available ⁴
--	------------------------	------------------------	------------------------

EMISSION RATING

Ultra Low Emission Vehicle II (ULEV-II)	Standard	Standard	Standard
---	----------	----------	----------

TRANSMISSION

6-speed Electronically Controlled automatic Transmission with intelligence (ECT-i); sequential shift mode and uphill/downhill shift logic; TOW/HAUL Mode	Standard	Standard	Standard
--	----------	----------	----------

DRIVETRAIN

Rear-Wheel Drive	Standard	Standard	Standard
------------------	----------	----------	----------

Multi-Mode 4WD with Torsen ^{®2} limited-slip center differential with locking feature (4x4 only)	Available	Available	Available
---	-----------	-----------	-----------

BODY CONSTRUCTION

Reinforced body-on-frame construction	Standard	Standard	Standard
---------------------------------------	----------	----------	----------

SUSPENSION

Front high-mounted coil-spring independent double-wishbone front suspension with low-pressure gas-filled shock absorbers and hollow stabilizer bar; rear coil-spring independent double-wishbone suspension with low-pressure gas-filled shock absorbers and hollow stabilizer bar	Standard	Standard	NA
--	----------	----------	----

Electronic Modulated Air Suspension	NA	NA	Standard
-------------------------------------	----	----	----------

Adaptive Variable Suspension (AVS) system	NA	NA	Standard
---	----	----	----------

STEERING

Engine speed-sensing Variable Flow Control (VFC) power-assisted rack-and-pinion	Standard	Standard	Standard
---	----------	----------	----------

Turning circle diameter, curb to curb (ft.)	38.1	38.1	38.1
---	------	------	------

BRAKES

Power-assisted 4-wheel Anti-lock Brake System (ABS) with Electronic Brake-force Distribution (EBD) and Brake Assist (BA) ³	Standard	Standard	Standard
---	----------	----------	----------

EXTERIOR DIMENSIONS (in.)

Overall width/height/length	79.9/77.0/205.1	79.9/77.0/205.1	79.9/77.0/205.1
-----------------------------	-----------------	-----------------	-----------------

Wheelbase	122.0	122.0	122.0
-----------	-------	-------	-------

Track (front/rear)	67.9/69.1	67.9/69.1	67.9/69.1
--------------------	-----------	-----------	-----------

INTERIOR DIMENSIONS (front/second-row/third-row seats) (in.)

Head room with moonroof	34.8/34.9/34.5	34.8/34.9/34.5	34.8/34.9/34.5
-------------------------	----------------	----------------	----------------

Shoulder room	66.4/65.6/65.7	66.4/65.6/65.7	66.4/65.6/65.7
---------------	----------------	----------------	----------------

Hip room	62.5/59.9/50.4	62.5/59.9/50.4	62.5/59.9/50.4
----------	----------------	----------------	----------------

Leg room	42.5/40.9/35.3	42.5/40.9/35.3	42.5/40.9/35.3
----------	----------------	----------------	----------------

OFF-HIGHWAY

Approach/departure angle (degrees) (4x2; 4x4)	27/20; 27/21	27/20; 27/21	27/20; 27/21
---	--------------	--------------	--------------

Ground clearance (in.) (4x2/4x4)	9.9/10.0	9.9/10.0	9.6/9.6
----------------------------------	----------	----------	---------

WEIGHTS AND CAPACITIES

Curb weight (lb.) (4x2/4x4)	5730/5985	5730/5985	5750/6000
-----------------------------	-----------	-----------	-----------

Gross Vehicle Weight Rating (GVWR) (lb.) (4x2/4x4)	7100/7300	7100/7300	7100/7300
--	-----------	-----------	-----------

Gross Combined Weight Rating (GCWR) (lb.) (4x2/4x4)	13,600/13,600	13,600/13,500	13,400/13,500
---	---------------	---------------	---------------

Cargo volume ⁴ (cu. ft.) (behind front/second-row/third-row seats)	120.1/66.6/18.9	120.1/66.6/18.9	120.1/66.6/18.9
---	-----------------	-----------------	-----------------

Fuel tank (gal.)	26.4	26.4	26.4
------------------	------	------	------

Seating capacity (standard/available)	8/7	8/7	7/NA
---------------------------------------	-----	-----	------

See numbered footnotes in Disclosures section.

SPECIFICATIONS (continued)

TOWING (SAE J2807 towing rating-compliant)⁵	SR5	LIMITED	PLATINUM
Towing hitch receiver and wiring harness with 4/7-pin connector	Standard	Standard	Standard
Towing capacity (lb.) (4x2/4x4)	7400/7100	7400/7100	7200/7000
TIRES			
Type – Mud-and-Snow-rated radials	Standard	Standard	Standard
Spare – Full-size, mounted under body	Standard	Standard	Standard
MILEAGE ESTIMATES (mpg city/highway/combined)⁶			
5.7L (4x2; 4x4)	13/17/15; 13/17/14	13/17/15; 13/17/14	13/17/15; 13/17/14

FEATURES⁷

EXTERIOR	SR5	LIMITED	PLATINUM		SR5	LIMITED	PLATINUM
Multi-reflector halogen headlights with auto-off feature and headlight cleaners	S	S	S	18-in. alloy wheels with P275/65R18 tires	S	–	–
Daytime Running Lights (DRL) with on/off feature	S	S	S	20-in. Sport alloy wheels with P275/55R20 tires	P	–	–
Integrated fog lights	S	S	S	20-in. alloy wheels with P275/55R20 tires	–	S	–
Chrome grille surround	S	S	S	20-in. diamond-cut-finish alloy wheels with P275/55R20 tires	–	–	S
Color-keyed grille surround	P	–	–	Washer-linked variable intermittent windshield wipers and intermittent rear wiper	S	S	S
Color-keyed heated power outside mirrors	S	–	–	Windshield wiper de-icer	S	S	S
Chrome auto-dimming heated power outside mirrors with power folding feature and turn signal indicators	–	S	–	Privacy glass on rear side, quarter and liftgate windows	S	S	S
Chrome auto-dimming heated power outside mirrors with power folding, reverse tilt-down and memory features, turn signal indicators and puddle lights	–	–	S	Power liftgate with jam protection	–	S	S
Color-keyed door handles	S	–	–	Color-keyed rear spoiler with LED center high-mount stop light	S	S	S
Chrome door handles	–	S	S	Roof rack	S	S	S
Power tilt/slide moonroof with sliding sunshade	S	S	S	Running boards	S	S	S
				Front and rear mudguards	S	S	S
				Engine and transfer case skid plates (transfer case 4x4 only)	S	S	S
INTERIOR							
Entune™ Multimedia Bundle ⁸ — includes AM/FM CD player with MP3/WMA playback capability, touch-screen display, aux jack, USB 2.0 port ⁹ with increased charging capability and iPod ^{®10} connectivity and control, hands-free phone capability, phone book access and music streaming ¹¹ via <i>Bluetooth</i> ^{®12} wireless technology, and voice recognition ¹³ (integrated backup camera ¹⁴ vehicle dependent). The Entune [®] App Suite ¹⁵ includes Destination Search, iHeartRadio, MovieTickets.com, OpenTable, [®] Pandora, ^{®16} Yelp [®] Facebook Places and Slacker Radio; Siri [®] Eyes Free ¹⁷ and real-time info including traffic, weather, fuel prices, sports and stocks	O	S	S	Leather-trimmed and heated front seats; 10-way power-adjustable driver's seat; 4-way power-adjustable front passenger seat	P	S	–
Entune™ Audio Plus with Connected Navigation App ¹⁸ — includes the Entune™ Multimedia Bundle, ⁸ 6.1-in. high-resolution touch-screen display, AM/FM CD player, auxiliary audio jack, USB 2.0 port ² with iPod ^{®10} connectivity and control, advanced voice recognition, ¹³ hands-free phone capability, phone book access and music streaming ¹¹ via <i>Bluetooth</i> ^{®12} wireless technology, Connected Navigation Scout [®] GPS Link app, ¹⁹ Siri [®] Eyes Free ²⁰ SiriusXM [®] Satellite Radio ¹⁹ with 3-month complimentary SiriusXM All Access trial, HD Radio ^{™20} Technology, HD Radio [™] Traffic and Weather in major metro areas and integrated backup camera ¹⁴ display with projected path	S	–	–	Perforated leather-trimmed heated and ventilated front seats; 12-way power-adjustable driver's seat with power thigh and lumbar support; 4-way power-adjustable front passenger seat	–	–	S
Entune™ Premium Audio with Integrated Navigation ²¹ and App Suite ¹⁵ — includes 6.1-in. high-resolution touch-screen display with Entune [®] App Suite. The Entune [®] App Suite includes: Destination Search, iHeartRadio, MovieTickets.com, OpenTable, [®] Pandora, ^{®16} Yelp [®] Facebook Places and Slacker Radio; real-time info including traffic, weather, fuel prices, sports and stocks	O/P	S	–	8-passenger seating with easy-clean fabric	S	–	–
Entune™ Premium JBL [®] Audio with Integrated Navigation ²¹ and App Suite ¹⁵ — includes 6.1-in. high-resolution touch-screen display with Entune™ Premium Audio with JBL [®] speakers and amplifier	–	O	S	8-passenger seating with leather trim	P	S	–
Multi-Information Display with outside temperature, compass, instant/average fuel economy and distance to empty	S	S	S	7-passenger seating with second-row captain's chairs	P	O	–
Rear-seat Blu-ray Disc™ player entertainment system with 9-in. display, RCA jacks, 115V AC power outlet, wireless remote and two wireless headphones ²²	–	O	S	7-passenger seating with second-row captain's chairs and multi-function center console	–	–	S
Easy-clean fabric-trimmed front seats; 8-way power-adjustable driver's seat; 4-way adjustable front passenger seat	S	–	–	Easy-clean fabric-trimmed 40/20/40 split, sliding, reclining, fold-flat second-row seat with one-touch access to third-row seat	S	–	–
				Leather-trimmed 40/20/40 split, sliding, reclining, fold-flat second-row seat with one-touch access to third-row seat	–	S	–
				Perforated leather-trimmed 60/40 split, power reclining, fold-flat third-row seat with folding headrests	–	–	S
				Easy-clean fabric-trimmed 60/40 split, reclining, fold-flat third-row seat with folding headrests	S	–	–
				Leather-trimmed power 60/40 split, reclining, fold-flat third-row seat with folding headrests	–	S	–
				Perforated leather-trimmed power 60/40 split, reclining, fold-flat third-row seat with folding headrests	–	–	S
				Cruise control	S	S	S
				Dynamic Laser Cruise Control (DLCC) ²³	–	–	S
				Urethane tilt/telescopic steering wheel with audio, Siri [®] Eyes Free ¹⁷ and <i>Bluetooth</i> ^{®12} hands-free phone controls	S	–	–

See numbered footnotes in Disclosures section.

S = Standard **O = Optional** **– = Not Available** **P = Feature is available as part of an option package.**

FEATURES⁷ (continued)

INTERIOR (continued)	SR5	LIMITED	PLATINUM		SR5	LIMITED	PLATINUM
Leather-trimmed tilt/telescopic steering wheel with audio, Siri® Eyes Free ¹⁷ and Bluetooth® ¹² hands-free phone controls	—	S	—	Second- and third-row retractable window sunshades	—	S	S
Leather-trimmed power tilt/telescopic steering wheel, wood-grain-style accents, memory, audio, Siri® Eyes Free ¹⁷ and Bluetooth® ¹² hands-free phone controls	—	—	S	Power door locks with shift-linked automatic lock/unlock feature	S	S	S
Analog instrumentation with speedometer, tachometer and fuel gauge; LCD display with odometer and tripmeters	S	—	—	Auto-dimming rearview mirror with compass and HomeLink® ²⁴ universal transceiver	O/P	S	S
Optitron instrumentation with speedometer and tachometer; LCD display with odometer and tripmeters	—	S	S	Overhead console with storage and maplights	S	S	S
Multi-function remote keyless entry system with remote illuminated entry	S	S	S	Multi-function center console with two front and two rear cup holders, two 12V auxiliary power outlets, sliding covered armrest and storage compartment	S	S	S
Power windows with driver and front passenger one-touch auto up/down and jam protection	S	S	S	Cargo area 12V auxiliary power outlet and grocery bag hooks	S	S	S
Power rear window with auto up/down, jam protection and defogger	S	S	S	Dual extendable sun visors with vanity mirrors	S	—	—
				Dual extendable sun visors with illuminated vanity mirrors and secondary visors	—	S	S
				16 (18 on Platinum) cup and bottle holders (total)	S	S	S
				Digital quartz clock	S	S	S
SAFETY AND CONVENIENCE	SR5	LIMITED	PLATINUM		SR5	LIMITED	PLATINUM
STAR SAFETY SYSTEM™ — includes Vehicle Stability Control (VSC) ²⁵ , Traction Control (TRAC), Anti-lock Brake System (ABS), Electronic Brake-force Distribution (EBD), Brake Assist (BA) ³ and Smart Stop Technology® (SST) ²⁶	S	S	S	LATCH (Lower Anchors and Tethers for Children) includes lower anchors on all second-row seats and tether anchors on all second-row seats and center third-row seat	S	S	S
Driver and front passenger Advanced Airbag System ²⁷	S	S	S	Child-protector rear door locks and power window lockout	S	S	S
Driver and front passenger seat-mounted side airbags, driver and front passenger knee airbags and all-row side curtain airbags ²⁷	S	S	S	Front energy-absorbing crumple zone	S	S	S
Driver and front passenger seat-mounted Roll-sensing Side Curtain Airbags (RSCA) with cutoff switch (4x4 models only) ²⁷	S	S	S	Side-impact door beams	S	S	S
Driver and front passenger seatbelt warning sensor	S	S	S	Energy-dissipating interior trim	S	S	S
3-point seatbelts for all seating positions; driver-side Emergency Locking Retractor (ELR) and Automatic/Emergency Locking Retractor (ALR/ELR) on all passenger belts	S	S	S	Tire Pressure Monitor System (TPMS) ²⁸	S	S	S
Driver and front passenger seatbelt pretensioners with force limiters	S	S	S	Blind Spot Monitor (BSM) ²⁹ lane change assist	—	P	S
				Two-position power memory driver's seat and memory outside mirrors	—	P	S
				Front and rear parking assist sonar ³⁰	P	S	S
				Trailer-Sway Control (TSC) ³¹	S	S	S
				Anti-theft system with engine immobilizer ³²	S	S	S

S = Standard O = Optional -- = Not Available P = Feature is available as part of an option package.

PACKAGES AND OPTIONS

SR5
Sport Package³³ — includes 20-in. Super Chrome alloy wheels, color-keyed grille surround and 7-passenger seating with second-row captain's chairs

Premium Package — includes 8-passenger leather-trimmed seats, heated 10-way power-adjustable driver's seat, 4-way power-adjustable front passenger seat, and power reclining and fold-flat third-row seat, front and rear parking assist sonar³⁰ (requires both auto-dimming rearview mirror with compass and HomeLink®²⁴ universal transceiver, and Entune™ Premium Audio with Integrated Navigation²¹ and App Suite¹⁵)

Option — Entune™ Premium Audio system with Integrated Navigation²¹ and App Suite¹⁵

Option — Auto-dimming rearview mirror with compass and HomeLink®²⁴ universal transceiver

LIMITED

Safety & Convenience Package — includes Blind Spot Monitor (BSM)²⁹ lane change assist, two-position power memory driver's seat and memory outside mirrors

Option — Entune™ Premium JBL® Audio system with Integrated Navigation²¹ and App Suite¹⁵ — includes Entune™ Premium Audio with JBL® speakers and amplifier

Option — 7-passenger seating with second-row captain's chairs

Option — Rear-seat Blu-ray Disc™ player with 9-in. display, two wireless headphones,²⁴ wireless remote and rear audio system with 115V AC power outlet and RCA jacks

For more information about our available audio systems, as well as Bluetooth®¹²-compatible features, please contact your local Toyota dealer.

CARS BUILT FOR THE WAY YOU LIVE

At Toyota, we build cars for how you live. From building advanced safety features designed to help prevent crashes to driving cross-country to understand how we can make your driving experience better, our work starts with understanding your needs. Building cars for how you live also means thinking about tomorrow — from fuel efficiency and environmental innovations, to things beyond cars, like a bicycle that you can control with your mind. And because what we learn building cars can help improve lives in other places, we do things like help communities rebuild their homes quickly after a disaster and work with soup kitchens to help them serve more people faster. Toyota. Built for how you live. Together we are going places.

DISCLOSURES

1. Flex Fuel Vehicles not available in every state. In states where available, all 4x4 5.7L V8 models are FFV. Flex Fuel Vehicles use E85, gasoline or a combination of both. Estimated mileage will vary. Consult your dealer for nearest E85 filling stations or see toyota.com for further details. **2.** Torsen® is a registered trademark of Zexel Torsen, Inc. **3.** Brake Assist is designed to help the driver take full advantage of the benefits of ABS. It is not a substitute for safe driving practices. Braking effectiveness also depends on proper brake-system maintenance and tire and road conditions. See *Owner's Manual* for details. **4.** Cargo and load capacity limited by weight and distribution. **5.** Before towing, confirm your vehicle and trailer are compatible, hooked up and loaded properly and that you have any necessary additional equipment. Do not exceed any Weight Ratings and follow all instructions in your *Owner's Manual*. The maximum you can tow depends on base curb weight plus the total weight of any cargo, occupants, and added vehicle equipment. "Added vehicle equipment" includes additional standard/optional equipment and accessories added by the manufacturer, dealers, and/or vehicle owners. The only way to be certain of your vehicle's exact curb weight is to weigh your vehicle without passengers or cargo. **6.** 2016 EPA-estimated city/highway mileage. Actual mileage will vary. **7.** Toyota strives to build vehicles to match customer interest and thus they typically are built with popular options and option packages. Not all options/packages are available separately and some may not be available in all regions of the country. See toyota.com for information about options/packages commonly available in your area. If you would prefer a vehicle without any or with different options, contact your dealer to check for current availability or the possibility of placing a special order. **8.** Entune™ is a trademark of Toyota Motor Corporation. Always drive safely, obey traffic laws and focus on the road while driving. Services vary by phone/carrier. Functionality depends on many factors. Services subject to change. For enrollment and more details, see toyota.com/entune. **9.** May not be compatible with all mobile phones, MP3/WMA players and like models. **10.** iPod® and iPhone® are registered trademarks of Apple Inc. All rights reserved. **11.** Apps/services vary by phone/carrier; functionality depends on many factors. Select apps use large amounts of data; you are responsible for charges. Apps and services subject to change. See toyota.com/entune for details. **12.** Concentrating on the road should always be your first priority while driving. Do not use the hands-free phone system if it will distract you. The Bluetooth® word mark and logos are registered trademarks owned by Bluetooth SIG, Inc. and any use of such marks by Toyota is under license. A compatible Bluetooth®-enabled phone must first be paired. Phone performance depends on software, coverage and carrier. **13.** Advanced voice recognition capabilities vary by head unit. **14.** The backup camera does not provide a comprehensive view of the rear area of the vehicle. You should also look around outside your vehicle and use your mirrors to confirm rearward clearance. Environmental conditions may limit effectiveness and view may become obscured. See *Owner's Manual* for details. **15.** Be sure to obey traffic regulations and maintain awareness of road and traffic conditions at all times. Apps/services vary by phone/carrier; functionality depends on many factors. Select apps use large amounts of data; you are responsible for charges. Apps and services subject to change. See toyota.com/entune for details. **16.** PANDORA®, the PANDORA® logo, and the Pandora trade dress are trademarks or registered trademarks of Pandora Media, Inc., used with permission. **17.** Always drive safely, obey traffic laws and focus on the road while driving. Siri® is available only on iPhone® 4S or later, iPad® with Retina® display, iPad mini™, and iPod touch® (5th generation) and requires Internet access. Siri® is not available in all languages or all areas, and features vary by area. Some Siri® functionality and commands are not accessible in the vehicle. Data charges may apply. See apple.com and phone carrier for details. Siri® is a registered trademark of Apple Inc. **18.** Be sure to obey traffic regulations and maintain awareness of road and traffic conditions at all times. Apps/services vary by phone/carrier; functionality depends on many factors. Select apps use large amounts of data; you are responsible for charges. Apps and services subject to change. Availability and accuracy of the information provided by Scout® GPS Link is dependent upon many factors. Use common sense when relying on information provided. Services and programming subject to change. Services not available in every city or roadway. See toyota.com/entune for details. Scout® is a registered trademark of Telenav, Inc. **19.** SiriusXM® services require a subscription after 3-month trial period. Subscriptions governed by SiriusXM® Customer Agreement available at www.siriusxm.com. If you decide to continue your SiriusXM® service at the end of your complimentary trial, the plan you choose will automatically renew and bill at then-current rates until you call 1-866-635-2349 to cancel. Fees and programming subject to change. Available only to those at least 18 years of age in the 48 contiguous United States and D.C. **20.** Be sure to obey traffic regulations and maintain awareness of road and traffic conditions at all times. HD Radio™ Technology manufactured under license from iBiquity Digital Corporation U.S. and Foreign Patents. HD Radio™ and the HD, HD Radio, and "Arc" logos are proprietary trademarks of iBiquity Digital Corp. **21.** Availability and accuracy of the information provided by the navigation system is dependent upon many factors. Use common sense when relying on information provided. Services and programming subject to change. Services not available in every city or roadway. Updates may be available from your dealer at an additional cost. See *Owner's Manual* for details. **22.** Headphones are for passenger use only. Do not use while driving vehicle. **23.** Dynamic Laser Cruise Control is designed to assist the driver and is not a substitute for safe and attentive driving practices. Please see your *Owner's Manual* for important instructions and cautions. **24.** HomeLink® and the HomeLink® house icon are registered trademarks of Gentex Corporation. **25.** Vehicle Stability Control is an electronic system designed to help the driver maintain vehicle control under adverse conditions. It is not a substitute for safe driving practices. Factors including speed, road conditions and driver steering input can all affect whether VSC will be effective in preventing a loss of control. See *Owner's Manual* for details. **26.** Smart Stop Technology® operates only in the event of certain contemporaneous brake and accelerator pedal applications. When engaged, the system will reduce power to help the brakes bring the vehicle to a stop. Factors including speed, road conditions and driver input can all impact stopping distance. Smart Stop Technology® is not a substitute for safe and attentive driving and does not guarantee instant stopping. See *Owner's Manual* for details. **27.** All the airbag systems are Supplemental Restraint Systems. All airbags (if installed) are designed to inflate only under certain conditions and in certain types of severe collisions: typically, frontal and knee airbags inflate in frontal collisions, side torso and side curtain airbags inflate in side collisions and roll-sensing curtain airbags inflate at a severe roll angle or roll rate. To decrease the risk of injury from an inflating airbag, always wear seatbelts, sit upright in the middle of the seat as far back as possible and do not lean against the door. Do not put objects in front of an airbag or around the seatback. Do not use a rearward-facing child seat in any front passenger seat. The force of an inflating airbag may cause serious injury or death. See your *Owner's Manual* for further information/warnings. **28.** The Toyota Tire Pressure Monitor alerts the driver when tire pressure is critically low. For optimal tire wear and performance, tire pressure should be checked regularly with a gauge; do not rely solely on the monitor system. See *Owner's Manual* for details. **29.** Do not rely exclusively on the Blind Spot Monitor. Always look over your shoulder and use your turn signal. There are limitations to the function, detection, range and clarity of the monitor. See *Owner's Manual* for details. **30.** Do not exclusively rely on the parking assist sonar system. Always look over your shoulder and use your mirrors to confirm clearance. Certain vehicle and environmental conditions may affect the ability of the sensors to detect an object. Even the shape and composition of the object can be a factor. See *Owner's Manual* for details. **31.** Trailer-Sway Control (TSC) is an electronic system designed to help the driver maintain vehicle control under adverse conditions. It is not a substitute for safe driving practices. Factors including speed, road conditions and driver steering input can all affect whether TSC will be effective in preventing a loss of control. See *Owner's Manual* for details. **32.** The engine immobilizer is a state-of-the-art anti-theft system. When you insert your key into the ignition switch or bring a Smart Key fob into the vehicle, the key transmits an electronic code to the vehicle. The engine will only start if the code in the transponder chip inside the key/fob matches the code in the vehicle's immobilizer. Because the transponder chip is embedded in the key/fob, it can be costly to replace. If you lose a key or fob, your Toyota dealer can help, or you can find a qualified independent locksmith to perform high-security key services by consulting your local Yellow Pages or by contacting www.aloa.org. **33.** Available only on SR5 in Super White, Silver Sky Metallic or Black. **34.** Standard on SR5 and Limited. Not available on Platinum. **35.** Standard on Limited and Platinum. **36.** Available on Limited, standard on Platinum. **37.** Standard on Platinum, not available on Limited or SR5. **38.** Auto LSD is an electronic, brake-actuated limited-slip differential that automatically activates when VSC is disengaged at low speeds. **39.** SR5 models only. **40.** Extra-cost color. **41.** Not available on Platinum models. **42.** Platinum models only. **43.** This floor mat was designed specifically for use in your model and model year vehicle and SHOULD NOT be used in any other vehicle. To avoid potential interference with pedal operation, each mat must be secured with fasteners. Do not install a floor mat on top of an existing floor mat. **45.** The Toyota Genuine Accessory Warranty will only apply when the installation is performed by a trained Toyota-approved installer. Please see dealer for details.

Toyota strives to build vehicles to match customer interest and thus they typically are built with popular options and option packages. Not all options/packages are available separately and some may not be available in all regions of the country. See toyota.com for information about options/packages commonly available in your area. If you would prefer a vehicle without any or with different options, contact your dealer to check for current availability or the possibility of placing a special order. Some vehicles are shown with available equipment. Seatbelts should be worn

at all times. For details on vehicle specifications, standard features and available equipment in your area, contact your Toyota dealer. A vehicle with particular equipment may not be available at the dealership. Ask your Toyota dealer to help locate a specifically equipped vehicle.

All information presented herein is based on data available at the time of posting, is subject to change without notice and pertains specifically to mainland U.S.A. vehicles only. Prototypes shown. Actual production vehicles will vary.



For Toyota Mobility program details, go to www.toyota.com/mobility or call the Toyota Customer Assistance Center at 1-800-331-4331

WARRANTIES

Every Toyota Car, Truck and SUV is built to exceptional standards. And that's not idle boasting. We back it up with these Limited Warranty Coverages:

Basic: 36 months/36,000 miles (all components other than normal wear and maintenance items).

Powertrain: 60 months/60,000 miles (engine, transmission/transaxle, drive system, seatbelts and airbags).

Rust-Through: 60 months/unlimited miles (corrosion perforation of sheet metal).

Emissions: Coverages vary under Federal and California regulations. Refer to applicable *Warranty and Maintenance Guide* for details.

Accessories: For Genuine Toyota Accessories purchased at the time of the new vehicle purchase, the Toyota Accessory Warranty coverage is in effect for 36 months/36,000 miles from the vehicle's in-service date, which is the same coverage as the Toyota New Vehicle Limited Warranty.

For Genuine Toyota Accessories purchased after the new vehicle purchase the coverage is 12 months, regardless of mileage, from the date the accessory was installed on the vehicle, or the remainder of any applicable new vehicle warranty, whichever provides greater coverage, with the exception of car covers. Car covers are warranted for 12 months from the date of purchase and do not assume any coverage under the Toyota New Vehicle Limited Warranty.

You may be eligible for transportation assistance if it's necessary that your vehicle be kept overnight for repairs covered under warranty. Please see your authorized Toyota dealership for further details.

For complete details about Toyota's warranties, please visit www.toyota.com, refer to the applicable *Warranty and Maintenance Guide* or see your Toyota dealer.