

2019 Prius Prime



Imagine the possibilities. Then explore them. The 2019 Toyota Prius Prime.

Let's put limits in the rearview mirror. Prius Prime is the most efficient Toyota hybrid yet. With the power to run in either EV²⁰ or hybrid driving modes, Prius Prime strikes a harmonious balance between necessity and desire. When the charge has run out, Prius Prime has an EPA-estimated 54 combined mpg.⁴⁶ Designed with intelligent tech, premium materials and thoughtful engineering, Prius Prime represents the next step of our continuous quest to reach more efficient mobility with less range anxiety — without compromise.



Advanced shown in Blizzard Pearl.⁵¹ Vehicles shown may be prototypes and/or shown with options. Actual model may vary.

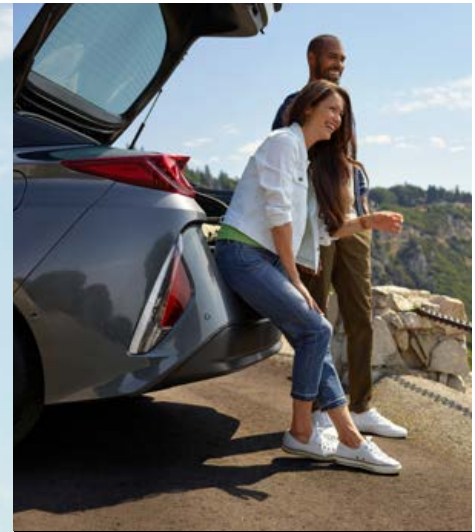
See numbered footnotes in Disclosures section.

Let's go places we've never gone before.

Let's charge toward the next exciting chapter where our vehicles can aim even higher. Prius Prime has an outstanding EPA-estimated 133 MPGe,⁴⁷ thanks to its cutting-edge, lightweight materials, proven hybrid technology and an optimized Plug-in Hybrid Vehicle (PHV) system. With its EPA-estimated 640-mile total driving range⁴⁸ and 25-mile EV Mode²⁰ driving range,⁴⁹ Prius Prime continues to raise the efficiency bar and help you challenge what's possible. The powertrain is a Toyota first, thanks to a dual motor drive system that improves acceleration in EV Mode for a fun drive. It's an exhilarating experience that elevates your possibilities.



Advanced shown in Magnetic Gray Metallic.
See numbered footnotes in Disclosures section.



Prius Prime is the most fuel-efficient car in its class,⁵² with an EPA-estimated 133 MPGe.²⁴



Innovative. Intentional. Inspiring.

Prius Prime is designed to enhance your drive with innovation that lies above and beneath the surface of the artfully sculpted exterior. The union of purposeful, aerodynamic elements and lightweight components helps increase your efficiency. Not to mention the EPA-estimated 25 miles⁴⁹ in EV Mode.²⁰ All of this helps Prius Prime strike the perfect balance between its elevated efficiency and eye-catching style. It's an uncompromising approach that ensures you'll enjoy every moment.



CARBON-FIBER-REINFORCED-POLYMER REAR HATCH

Prius Prime's rear hatch is made of carbon-fiber-reinforced polymer, a first for Toyota. This strong yet lightweight material makes opening and closing the hatch effortless. Found only on Prius Prime, the dual-wave rear glass design flows seamlessly into the rear spoiler, helping reduce air resistance. Advanced aerodynamics and lightweight materials like these help increase efficiency and elevate your drive.



STANDARD LED LIGHTING

Prius Prime features visually striking Quad-LED projector headlights, available LED fog lights and accent lights to help you see more of what matters. Bright and efficient, the rear taillights are also equipped with LEDs that consume less energy.



15-IN. ALLOY WHEELS

Prius Prime's lightweight aluminum alloy wheels are designed to perform. The low-rolling resistance tires and wind-cheating wheel covers help enhance fuel efficiency and make your drive a quiet, comfortable one.

DESIGNED WITH EFFICIENCY



Advanced shown in Hypersonic Red.⁵¹

See numbered footnotes in Disclosures section.

Intelligence meets technology.

Prius Prime has innovative tech that you just can't miss. Its available 11.6-in HD multimedia display's intuitive pinch, zoom, tap and swipe gestures create a familiar smartphone-like experience. So whether you're using the Entune® App Suite⁴ to plan your next night out, or using the navigation³ to help you get there, you've got the power to do it all.



MULTI-INFORMATION DISPLAY (MID)

The customizable 4.2-in. color dual Multi-Information Display screens let you keep track of Prius Prime's vitals at a glance. Use the steering wheel-mounted controls to keep track of real-time driving data, up-to-date fuel economy, energy use, and more — all while keeping both hands on the wheel.



REMOTE CLIMATE²

Take control and use your smartphone with the available Prius Prime apps,¹⁴ including the Remote Climate app. This way, you can check your Prius Prime's current temperature setting and change it to your liking — all before you even get in. When Prius Prime is plugged in, the power used for Remote Climate is pulled straight from the grid so your battery keeps its charge. Now your comfort is always within reach.



INTELLIGENT DRIVE COACH

This available intelligent technology, called Predictive Fuel-Efficient Drive,¹⁸ helps boost fuel efficiency by learning your routine stopping patterns. When approaching a recorded stop, an icon will display and suggest the optimal time to release the accelerator. Regenerative braking also activates sooner to recover more energy for the hybrid battery.



Advanced interior shown in Black SofTex^{®19} trim.

See numbered footnotes in Disclosures section.

Watching your back throughout the drive ahead.

Enjoy every journey, from crosstown to cross country, all from inside Prius Prime. Everything has been purposefully designed with an uncompromising approach to serve your needs. And Prius Prime's innovative technologies like available Intelligent Clearance Sonar (ICS)³⁹ with Intelligent Parking Assist (IPA)⁴⁰ help lessen the challenges found in the everyday drive. It's smart tech and comfort designed to give you the peace of mind to focus on the drive ahead.



INTELLIGENT CLEARANCE SONAR³⁹

Be aware of what's around you. As you park, available Intelligent Clearance Sonar is designed to scan for stationary objects like walls or posts that are within close proximity. If Prius Prime anticipates a collision, an audible and visual alert will be emitted, engine or motor output reduced, and if needed, the brakes will automatically be applied to help bring Prius Prime to a halt.



BACKUP CAMERA¹⁷

When in Reverse, Prius Prime's standard integrated backup camera uses a wide-angle lens to display a large viewing area. Clearly marked lines on the screen show the distance, giving you more confidence to get out of any spot — tricky or not.



INTELLIGENT PARKING ASSIST⁴⁰

Available Intelligent Parking Assist helps you navigate and conquer those difficult parking situations with the push of a button. Prius Prime automatically controls the steering wheel while you control the gas, gears and brake to help guide you into an open parking space.

CONVENIENCE



Advanced shown in Blue Magnetism.

Amenities that exceed expectations.

Prius Prime's cabin features a modern design and premium materials throughout. Thoughtful interior touches delight the senses, while smart tech brings convenience and innovative thinking to every trip. Prius Prime's front seats feature deep bolsters to help keep you in place when the road twists, for extra confidence behind the wheel.



COLOR HEAD-UP DISPLAY (HUD)

Prius Prime's available color Head-Up Display uses aircraft-inspired technology to project information about your drive on the windshield, where it's convenient to see. Easily view the current speed, energy monitor, turn-by-turn navigation directions, battery charge, and Toyota Safety Sense™ P (TSS-P)²⁹ alerts — all without taking your eyes off the road.



HEATED STEERING WHEEL

Prius Prime's available heated steering wheel warms things up when it's cold outside. Once you're comfortable, you can use the steering wheel-mounted controls for quick access to audio, phone, climate and the Multi-Information Display.



JBL[®] PREMIUM AUDIO SYSTEM

Sound all around. The available JBL® Premium Audio features ten JBL® GreenEdge^{®38} speakers to amplify output from less energy. What you hear is clear sound imaging that will elevate any drive. You can also use the USB port⁶ or Bluetooth^{®9} hands-free wireless technology to bring your favorite playlist, and backup singers, along for the ride.⁹



Advanced interior shown in Black SofTex^{®19} trim.

See numbered footnotes in Disclosures section.

INTERIOR CONVENIENCE



Advanced interior shown in Black SofTex^{®19} trim.

See numbered footnotes in Disclosures section.

60/40 SPLIT FOLD-DOWN REAR SEATS

Prius Prime's 60/40 split fold-down rear seats fold to maximize cargo space and versatility. With 19.8 cu. ft. of space, it will help you enjoy even more room — and more adventures.⁴⁵



QI-COMPATIBLE WIRELESS SMARTPHONE CHARGING²³

With Prius Prime's available Qi-compatible wireless smartphone charging, you can charge your Qi-compatible smartphone or other compatible device without wires or worry. Place it on the nonslip holder and charge up before getting to your destination.



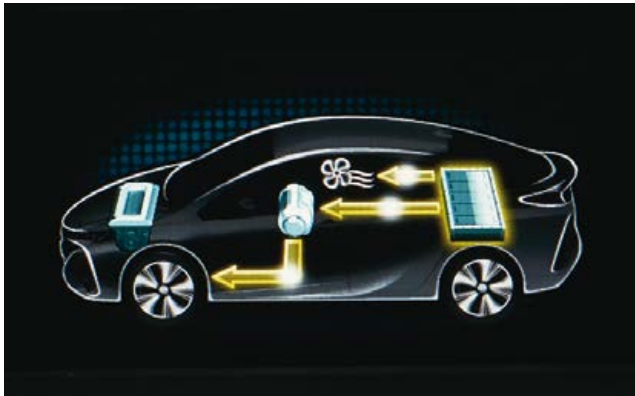
STANDARD HEATED FRONT SEATS

Prius Prime comes with standard heated front seats, so the comfort of you and your passenger is a top priority.



The best of both worlds.

Every last detail of Prius Prime has been optimized to help make it the most advanced — and efficient — Prius yet. Advanced, lightweight materials, like the Toyota-first carbon-fiber-reinforced-polymer rear hatch, proven hybrid technology and an optimized Plug-in Hybrid Vehicle (PHV) system all play their part to enhance Prius Prime’s performance while maximizing efficiency. Simply charge from a standard household outlet and go even farther.



EV MODE²⁰

With a charged battery, the driver can experience electrifying performance. Prius Prime features a Toyota-first dual motor generator drive system that gives a fun acceleration feel and enables electric driving mode at full highway speeds. The system’s output and regeneration conditions are clearly displayed in real-time on the MID, so you can see your efficiency in action.



HV/EV AUTO DRIVE MODES

Prius Prime also offers two other driving modes so that the driver stays in control: EV Auto Mode⁵³ and HV Mode. EV Auto Mode intelligently selects between EV and hybrid driving based on demand and driving conditions to optimize your efficiency. HV Mode efficiently combines the gas engine and electrical power from the HV battery to drive Prius Prime.



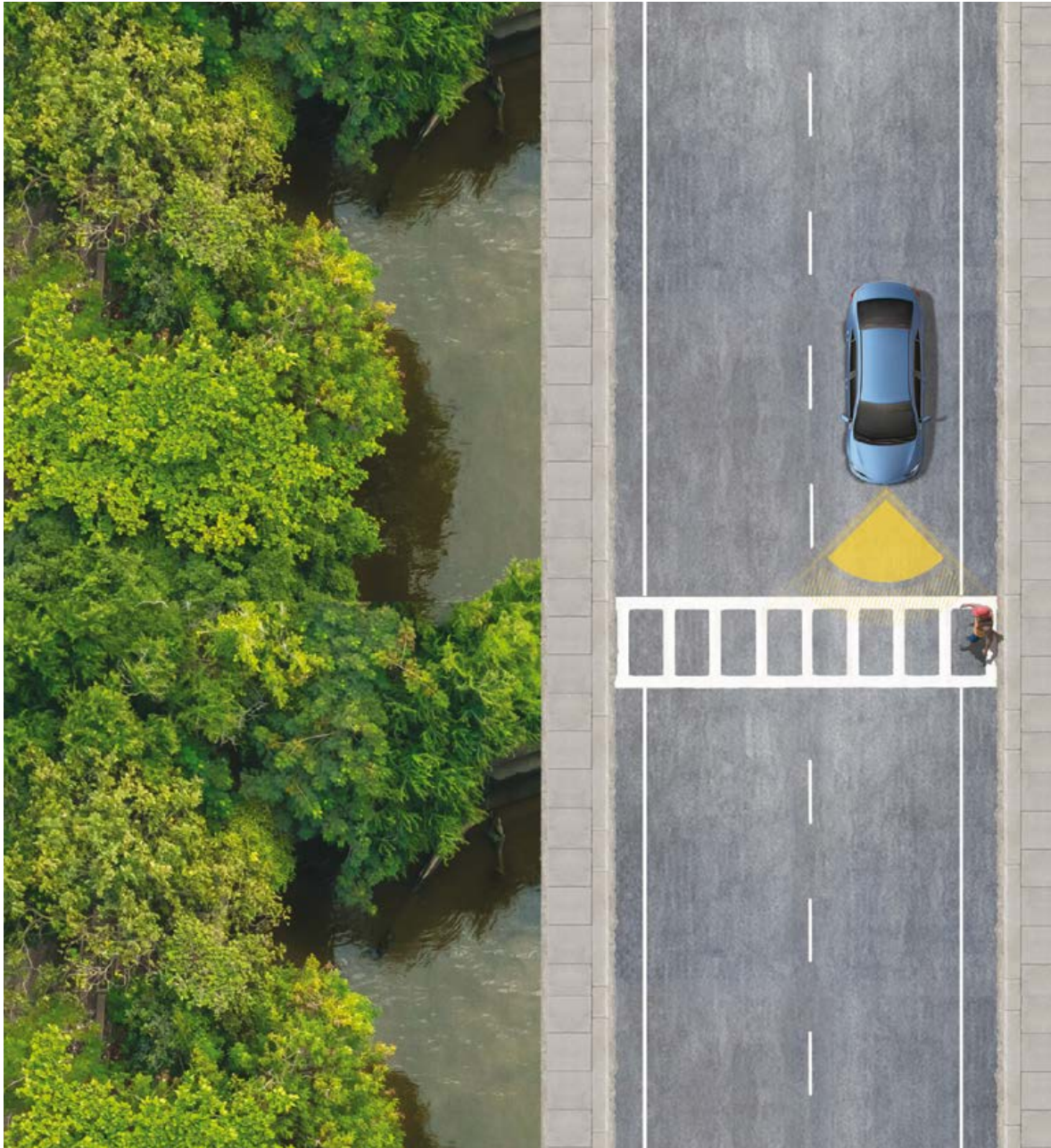
CHARGE SCHEDULING⁵⁴

Charge scheduling gives you the option to charge during off-peak hours to help reduce electricity costs and support efficient grid usage in your community. Simply program your preferred charge start or departure time from Prius Prime so it can be topped off and ready to roll when you are. And, you can even start your charge from afar through the available Prius Prime apps.¹⁴

PLUG-IN/HYBRID FUEL EFFICIENCY



Premium shown in Blue Magnetism.



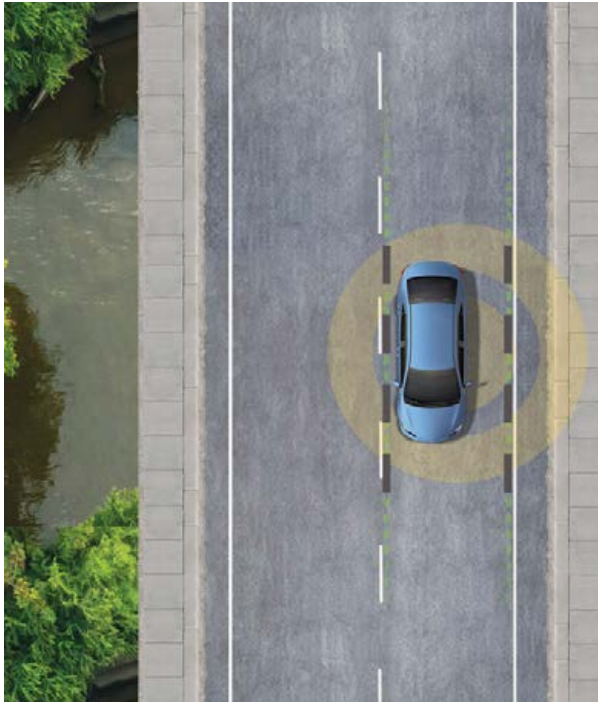
Active safety comes standard.

Prius Prime's standard Toyota Safety Sense™ P (TSS-P)²⁹ is an active safety package that combines Pre-Collision System³⁰ with Pedestrian Detection³¹ (PCS w/PD), Lane Departure Alert with Steering Assist (LDA w/SA)³², Automatic High Beams (AHB)³³ and Full-Speed Range Dynamic Radar Cruise Control (DRCC)³⁴ to assist you. TSS-P's comprehensive features create in-the-moment safety designed to help keep you safe under certain circumstances.



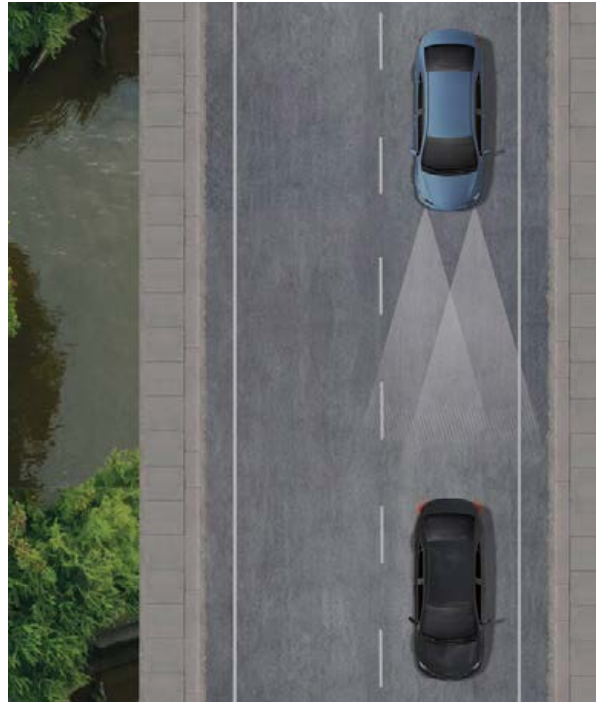
PRE-COLLISION SYSTEM³⁰ WITH PEDESTRIAN DETECTION³¹

Using an in-vehicle camera and radar to help detect a vehicle or a pedestrian in front of you, the Pre-Collision System with Pedestrian Detection (PCS w/PD) is designed to help you mitigate or avoid a potential collision. If the system determines that a frontal collision is likely, it prompts you to take action using audio and visual alerts. If you notice the potential collision and apply the brakes, PCS w/PD may apply additional force using Brake Assist (BA)²⁶. If you don't brake in time, it may automatically apply the brakes to reduce your speed, helping to minimize the likelihood of a frontal collision or reduce its severity.



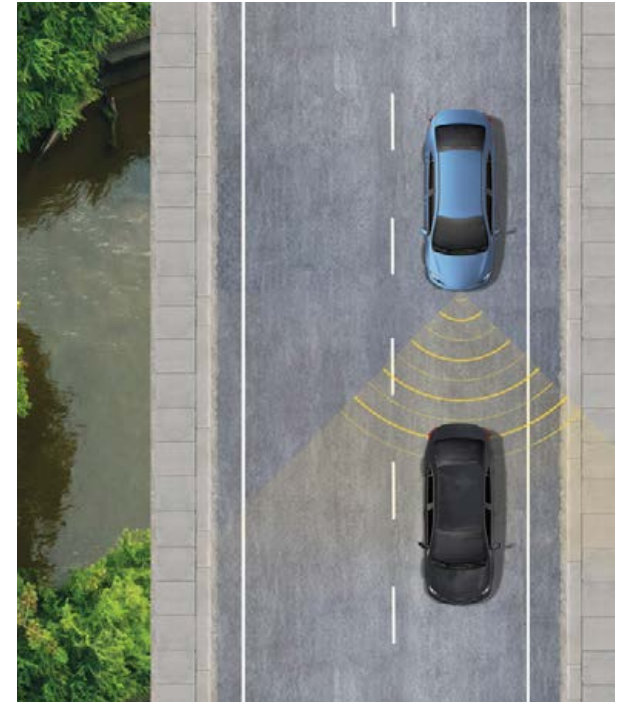
LANE DEPARTURE ALERT WITH STEERING ASSIST³² (LDA w/SA)

Under certain circumstances, Lane Departure Alert (LDA) is designed to detect lane departure on roads with clear markings. LDA only activates when you're traveling at a speed of 32 mph or faster. When you hear and see the alert, after carefully checking the road around you, you should safely direct your vehicle back to the center of your lane. In addition, when it senses that you're unintentionally drifting, the system may automatically make small corrective steering inputs to help keep your vehicle in its lane.



AUTOMATIC HIGH BEAMS (AHB)³³

The Automatic High Beams (AHB) feature is a safety system designed to help you see more clearly at night. Designed to activate at speeds above 25 mph, AHB relies on an in-vehicle camera to help detect the headlights of oncoming vehicles and taillights of preceding vehicles, then automatically toggles between high and low beams accordingly to provide the appropriate amount of light. By using high beams more frequently, the system may allow earlier detection of pedestrians and obstacles.



DYNAMIC RADAR CRUISE CONTROL (DRCC)³⁴

Standard Full-Speed Range Dynamic Radar Cruise Control takes cruising to the next level. Using forward-sensing radar technology and an intelligent camera, the system is designed to detect the distance of the vehicle traveling directly ahead of you and adjust your speed accordingly, down to a complete stop. It works in light traffic as well, helping you maintain a preset following distance — slowing when the preset distance shortens, then accelerating back to your original cruising speed when the road clears.

Surrounded by safety.

Prepare for the unexpected. Prius Prime comes standard with an advanced suite of six safety features. The Star Safety System™ includes Enhanced Vehicle Stability Control (VSC),²⁵ Traction Control (TRAC), Anti-lock Brake System (ABS), Electronic Brake-force Distribution (EBD), Brake Assist (BA)²⁶ and Smart Stop Technology® (SST)²⁷ Prius Prime also comes with eight airbags,²⁸ including a driver and front passenger Advanced Airbag System, driver and front passenger seat-mounted side airbags, front and rear side curtain airbags, a driver's knee airbag and a front passenger seat cushion airbag, to help you drive with more confidence.



RAIN-SENSING WIPERS

Keeping your view clear. Between light rain and heavy downpours, Prius Prime's available rain-sensing variable windshield wipers can be set to automatically activate depending on the amount of rain on the windshield and the speed of the car. It's a convenience that helps you stay focused on the road.



BLIND SPOT MONITOR (BSM)⁴²

Detect more of what matters. When a vehicle in the next lane enters your vehicle's blind spot on either side, the available Blind Spot Monitor is designed to illuminate the indicator in that sideview mirror. If you continue to signal a lane change to that lane, the indicator will flash to get your attention.



REAR CROSS-TRAFFIC ALERT (RCTA)⁴³

Watching out for you. In Reverse, Prius Prime's available Rear Cross-Traffic Alert uses sensors to detect vehicles approaching from either side. If the system senses cross traffic, it warns you by flashing the side mirror indicators and sounding a warning tone.

SAFETY



Advanced shown in Magnetic Gray Metallic.



Plus

Powertrain

- 1.8L 4-Cylinder Engine with Hybrid Synergy Drive®
- Electronically controlled Continuously Variable Transmission (ECVT)
- 55 city/53 highway/54 combined EPA-estimated mpg⁴⁶
- 133 EPA-estimated MPGe⁴⁷
- 640-mile EPA-estimated total driving range⁴⁸
- 25-mile EPA-estimated EV Mode²⁰ driving range⁴⁹

Exterior Features

- Quad-LED projector headlights with auto-off feature
- LED Daytime Running Lights (DRL) with on/off feature
- LED taillights and stop lights
- Patterned acrylic grille overlay with active grille shutter
- Heated power outside mirrors with folding feature
- 15-in. 5-spoke alloy wheels with two-tone wheel covers and P195/65R15 tires
- Washer-linked variable intermittent windshield wipers
- Dual-wave rear glass design
- Carbon-fiber-reinforced-polymer rear hatch
- Charge port with illumination and charging indicator light

Interior Features

- Remote A/C System²
- Smart-flow climate control system with pollen filtration
- Entune™ Premium Audio with Integrated Navigation³ and Entune® App Suite⁴ — includes 7-in. high-resolution touch-screen with split-screen display, AM/FM cache radio, HD Radio™⁵ CD player, six speakers, auxiliary port, USB 2.0 port⁶ with iPod®⁷ connectivity and control, advanced voice recognition,⁸ hands-free phone capability, phone book access and music streaming⁹ via Bluetooth®⁹⁹ wireless technology, Siri® Eyes Free,¹⁰ HD Radio™⁵ Predictive Traffic and Doppler Weather overlay, SiriusXM® Satellite Radio¹¹ with 3-month All Access trial¹² See toyota.com/entune for details.
- Integrated backup camera¹⁷
- 4.2-in. color dual Multi-Information Display (MID) with customizable screens including Energy Monitor, Hybrid System Indicator and Eco Score, Eco Savings Record, Drive Monitor, Eco Diary, climate control, driver support systems, audio system content, and navigation system content
- 4-passenger seating with 60/40 split fold-down rear seats with center armrest with cup holders and center console

- SofTex®¹⁹-trimmed tilt/telescopic steering wheel with audio, climate, Multi-Information Display (MID) and Bluetooth®⁹⁹ hands-free phone controls
- Digital instrumentation with speedometer, hybrid system power meter, fuel gauge, odometer, current fuel economy, shift-position indicator, EV²⁰/hybrid mode indicator, and drive mode indicator
- Fabric-trimmed heated front seats with armrests and seatback pockets; 6-way adjustable driver's seat; 4-way adjustable front passenger seat
- Smart Key System²¹ on driver's door with Push Button Start
- Power windows with auto up/down
- Dual sun visors with illuminated vanity mirrors
- Power door locks
- Rear center console with armrest, storage compartment and two rear cup/bottle holders
- Cargo area lightweight tonneau cover
- One front and one rear 12V auxiliary power outlets
- One front USB power outlet⁶
- Rear dome light
- Cargo area light
- Front-door storage pockets with sculpted bottle holders; rear-door storage bottle holders
- Foot pedal parking brake
- Charge cable for standard outlet (120V)

Safety Features

- Star Safety System™ — includes Enhanced Vehicle Stability Control (VSC)²⁵ Traction Control (TRAC), Anti-lock Brake System (ABS), Electronic Brake-force Distribution (EBD), Brake Assist (BA)²⁶ and Smart Stop Technology® (SST)²⁷
- Driver and front passenger Advanced Airbag System²⁸
- Driver and front passenger front seat-mounted side airbags, passenger seat cushion airbag, driver's knee airbag and front and rear side curtain airbags²⁸
- Toyota Safety Sense™ P (TSS-P)²⁹ — Pre-Collision System³⁰ with Pedestrian Detection³¹ (PCS w/PD), Lane Departure Alert with Steering Assist (LDA w/SA)³² Automatic High Beams (AHB)³³ and Full-Speed Range Dynamic Radar Cruise Control (DRCC)³⁴
- LATCH (Lower Anchors and Tethers for CHildren) includes lower anchors on rear seats
- Tire Pressure Monitor System (TPMS)³⁵
- Vehicle Proximity Notification System (VPNS)³⁶
- Hill Start Assist Control (HAC)⁴¹
- Engine immobilizer⁴⁴
- Tire Repair System
- Additional year of roadside assistance;³⁷ for a total of 3 years of roadside assistance from date of purchase



Premium

Adds to or replaces features offered on Plus

Powertrain

- 1.8L 4-Cylinder Engine with Hybrid Synergy Drive®
- Electronically controlled Continuously Variable Transmission (ECVT)
- 55 city/53 highway/54 combined EPA-estimated mpg⁴⁶
- 133 EPA-estimated MPGe⁴⁷
- 640-mile EPA-estimated total driving range⁴⁸
- 25-mile EPA-estimated EV Mode²⁰ driving range⁴⁹

Exterior Features

- Quad-LED projector headlights with auto on/off feature
- Smart charging cable lock

Interior Features

- Entune™ Premium Audio with Integrated Navigation³ and Entune® App Suite⁴ — includes **11.6-in. high-resolution touch-screen with split-screen display**, AM/FM cache radio, HD Radio™⁵ six speakers, auxiliary port, USB 2.0 port⁶ with iPod®⁷ connectivity and control, advanced voice recognition,⁸ hands-free phone capability, phone book access and music streaming⁹ via Bluetooth®⁹⁹ wireless technology, Siri® Eyes Free,¹⁰ HD Radio™⁵ Predictive Traffic and Doppler Weather overlay, and SiriusXM® Satellite Radio¹¹ with 3-month All Access trial¹² See toyota.com/entune for details.
- Predictive Fuel-Efficient Drive¹⁸
- SofTex®¹⁹-trimmed heated front seats with armrests and seatback pockets; 8-way power-adjustable driver's seat with power lumbar support; 4-way adjustable front passenger seat
- Smart Key System²¹ on three doors with Push Button Start and remote illuminated entry
- Qi-compatible wireless smartphone charging²³ with charge indicator light



Advanced

Adds to or replaces features offered on Premium

Powertrain

- 1.8L 4-Cylinder Engine with Hybrid Synergy Drive®
- Electronically controlled Continuously Variable Transmission (ECVT)
- 55 city/53 highway/54 combined EPA-estimated mpg⁴⁶
- 133 EPA-estimated MPGe⁴⁷
- 640-mile EPA-estimated total driving range⁴⁸
- 25-mile EPA-estimated EV Mode²⁰ driving range⁴⁹

Exterior Features

- Integrated LED fog lights and LED accent lights
- Rain-sensing variable intermittent windshield wipers

Interior Features

- Entune™ Premium JBL®¹³ Audio with Integrated Navigation³ and Entune® App Suite⁴ — includes **11.6-in. high-resolution touch-screen with split-screen display**, AM/FM cache radio, HD Radio™⁵ ten JBL® GreenEdge®³⁸ speakers including subwoofer amplifier, auxiliary port, USB 2.0 port⁶ with iPod®⁷ connectivity and control, advanced voice recognition⁸ hands-free phone capability, phone book access and music streaming⁹ via *Bluetooth*®⁹ wireless technology, Siri® Eyes Free,¹⁰ HD Radio™⁵ Predictive Traffic and Doppler Weather overlay, SiriusXM® Satellite Radio¹¹ with 3-month All Access trial¹² and Prius Prime apps¹⁴ Prius Prime apps include Charge Management,³⁴ Remote Climate,² Vehicle Finder, Charging Station Map and Eco Dashboard. See toyota.com/entune for details. Access to Prius Prime apps¹⁴ requires an active Safety Connect®¹⁵ subscription after the 3-year complimentary trial.¹⁶ See toyota.com/safety-connect for details.
- Heated steering wheel
- Auto-dimming rearview mirror with HomeLink®²² universal transceiver
- Cargo area heavy sliding tonneau cover

Safety Features

- Safety Connect®¹⁵ — includes Emergency Assistance, Stolen Vehicle Locator, Roadside Assistance³⁷ and Automatic Collision Notification; three-year trial subscription.¹⁶ See toyota.com/safety-connect for details.
- Color Head-Up Display (HUD) with speedometer, navigation, Hybrid System Indicator, battery charge, and Toyota Safety Sense™ P (TSS-P)²⁹ alerts
- Intelligent Clearance Sonar (ICS)³⁹ with Intelligent Parking Assist (IPA)⁴⁰
- Blind Spot Monitor (BSM)⁴² with Rear Cross-Traffic Alert (RCTA)⁴³

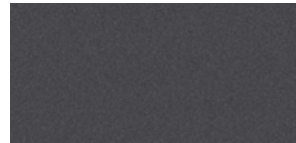
Color



Blue Magnetism



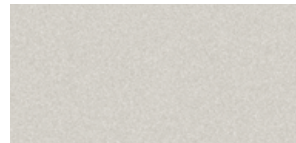
Hypersonic Red⁵¹



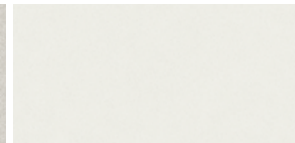
Magnetic Gray Metallic



Classic Silver Metallic



Titanium Glow



Blizzard Pearl⁵¹

Trim

Also available in



Plus fabric shown in Black



Moonstone fabric



Premium and Advanced SofTex®¹⁹ shown in Black



Moonstone SofTex®¹⁹

Wheel



15-in. 5-spoke alloy wheel with two-tone wheel cover

ACCESSORIES

Add the final touch to your Prius Prime with a wide range of available Genuine Toyota Accessories. Make your Prius Prime reflect your personal style. Some accessories may not be available in all regions of the country. For a complete list of accessories, go to toyota.com/priusprime or see your Toyota dealer for details.



15-in. 10-spoke alloy wheels



Aero side splitters



Alloy wheel locks



All-weather floor liners⁵⁵



Body side moldings



Cargo liner⁴⁵



Cargo tote⁴⁵



Carpet cargo mat



Carpet floor mats⁵⁵



Coin holder/ashtray cup



Door edge guards



Emergency assistance kit

See numbered footnotes in Disclosures section.

ACCESSORIES

Elevate your Prius Prime driving experience and make an entrance with available Genuine Toyota Accessories. For a complete list of accessories, go to toyota.com/priusprime or see your Toyota dealer for details.



First aid kit



Illuminated doorills



Lower console appliqué



Paint protection film⁵⁷



Rear bumper appliqué



Removable cross bars^{45, 56}



Security system



Shifter appliqué



Universal tablet holder⁵⁸

FEATURES¹


| EXTERIOR | PLUS | PREMIUM | ADVANCED | | PLUS | PREMIUM | ADVANCED |
|---|------|---------|----------|--|------|---------|----------|
| Quad-LED projector headlights with auto-off feature | S | — | — | Washer-linked variable intermittent windshield wipers | S | S | — |
| Quad-LED projector headlights with auto on/off feature | — | S | S | Rain-sensing variable intermittent windshield wipers | — | — | S |
| LED Daytime Running Lights (DRL) with on/off feature | S | S | S | Dual-wave rear glass design | S | S | S |
| Integrated LED fog lights and LED accent lights | — | — | S | Carbon-fiber-reinforced-polymer rear hatch | S | S | S |
| LED taillights and stop lights | S | S | S | Charge port with illumination and charge indicator light | S | S | S |
| Patterned acrylic grille overlay with active grille shutter | S | S | S | Smart charging cable lock | — | S | S |
| Heated power outside mirrors with folding feature | S | S | S | | | | |
| 15-in. 5-spoke alloy wheels with two-tone wheel covers and P195/65R15 tires | S | S | S | | | | |
| INTERIOR | | | | | | | |
| Remote A/C System ² | S | S | S | Predictive Fuel-Efficient Drive ¹⁸ | — | S | S |
| Smart-flow climate control system with pollen filtration | S | S | S | 4-passenger seating with 60/40 split fold-down rear seats with center armrest with cup holders and center console | S | S | S |
| Entune™ Premium Audio with Integrated Navigation ³ and Entune® App Suite ⁴ — includes 7-in. high-resolution touch-screen with split-screen display, AM/FM cache radio, HD Radio™ ⁵ CD player, six speakers, auxiliary port, USB 2.0 port ⁶ with iPod ^{®7} connectivity and control, advanced voice recognition ⁸ , hands-free phone capability, phone book access and music streaming ⁹ via Bluetooth ^{®9} wireless technology, Siri [®] Eyes Free, ¹⁰ HD Radio™ ⁵ Predictive Traffic and Doppler Weather overlay, SiriusXM [®] Satellite Radio ¹¹ with 3-month All Access trial. ¹² See toyota.com/entune for details. | S | — | — | SofTex ^{®19} -trimmed tilt/telescopic steering wheel with audio, climate, Multi-Information Display (MID) and Bluetooth ^{®9} hands-free phone controls | S | S | S |
| Entune™ Premium Audio with Integrated Navigation ³ and Entune® App Suite ⁴ — includes 11.6-in. high-resolution touch-screen with split-screen display , AM/FM cache radio, HD Radio™ ⁵ six speakers, auxiliary port, USB 2.0 port ⁶ with iPod ^{®7} connectivity and control, advanced voice recognition ⁸ , hands-free phone capability, phone book access and music streaming ⁹ via Bluetooth ^{®9} wireless technology, Siri [®] Eyes Free, ¹⁰ HD Radio™ ⁵ Predictive Traffic and Doppler Weather overlay, and SiriusXM [®] Satellite Radio ¹¹ with 3-month All Access trial. ¹² See toyota.com/entune for details. | — | S | — | Heated steering wheel | — | — | S |
| Entune™ Premium JBL ^{®13} Audio with Integrated Navigation ³ and Entune® App Suite ⁴ — includes 11.6-in. high-resolution touch-screen with split-screen display , AM/FM cache radio, HD Radio™ ⁵ ten JBL ^{®13} GreenEdge ^{®38} speakers including subwoofer amplifier, auxiliary port, USB 2.0 port ⁶ with iPod ^{®7} connectivity and control, advanced voice recognition ⁸ , hands-free phone capability, phone book access and music streaming ⁹ via Bluetooth ^{®9} wireless technology, Siri [®] Eyes Free, ¹⁰ HD Radio™ ⁵ Predictive Traffic and Doppler Weather overlay, SiriusXM [®] Satellite Radio ¹¹ with 3-month All Access trial, ¹² and Prius Prime apps. ¹⁴ Prius Prime apps include Charge Management ⁵⁴ Remote Climate ² Vehicle Finder, Charging Station Map and Eco Dashboard. See toyota.com/entune for details. Access to Prius Prime apps ¹⁴ requires an active Safety Connect ^{®16} ; three-year trial subscription. ¹⁵ See toyota.com/safety-connect for details. | — | — | S | Digital instrumentation with speedometer, hybrid system power meter, fuel gauge, odometer, current fuel economy, shift-position indicator, EV ²⁰ /hybrid mode indicator, and drive mode indicator | S | S | S |
| Integrated backup camera ¹⁷ | S | S | S | Fabric-trimmed heated front seats with armrests and seatback pockets; 6-way adjustable driver's seat; 4-way adjustable front passenger seat | S | — | — |
| 4.2-in. color dual Multi-Information Display (MID) with customizable screens including Energy Monitor, Hybrid System Indicator and Eco Score, Eco Savings Record, Drive Monitor, Eco Diary, climate control, driver support systems, audio system content and navigation system content | S | S | S | SofTex ^{®19} -trimmed heated front seats with armrests and seatback pockets; 8-way power-adjustable driver's seat with power lumbar support; 4-way adjustable front passenger seat | — | S | S |
| | | | | Smart Key System ²¹ on driver's door with Push Button Start | S | — | — |
| | | | | Smart Key System ²¹ on three doors with Push Button Start and remote illuminated entry | — | S | S |
| | | | | Power windows with auto up/down | S | S | S |
| | | | | Dual sun visors with illuminated vanity mirrors | S | S | S |
| | | | | Power door locks | S | S | S |
| | | | | Auto-dimming rearview mirror with HomeLink ^{®22} universal transceiver | — | — | S |
| | | | | Rear center console with armrest, storage compartment and two rear cup/bottle holders | S | S | S |
| | | | | Qi-compatible wireless smartphone charging ²³ with charge indicator light | — | S | S |
| | | | | Cargo area lightweight tonneau cover | S | S | — |
| | | | | Cargo area heavy sliding tonneau cover | — | — | S |
| | | | | One front and one rear 12V auxiliary power outlets | S | S | S |
| | | | | One front USB power outlet ⁶ | S | S | S |
| | | | | Rear dome light | S | S | S |
| | | | | Cargo area light | S | S | S |
| | | | | Front door storage pockets with sculpted bottle holders; rear door storage bottle holders | S | S | S |
| | | | | Foot pedal parking brake | S | S | S |
| | | | | Charging cable for standard outlet | S | S | S |

See numbered footnotes in Disclosures section.

S = Standard — = Not available

FEATURES (continued)

SAFETY/CONVENIENCE

| | PLUS | PREMIUM | ADVANCED | | PLUS | PREMIUM | ADVANCED |
|--|---|---------|----------|---|--|---------|----------|
|  Star Safety System™ — includes Enhanced Vehicle Stability Control (VSC), ²⁵ Traction Control (TRAC), Anti-lock Brake System (ABS), Electronic Brake-force Distribution (EBD), Brake Assist (BA) ²⁶ and Smart Stop Technology® (SST) ²⁷ | S | S | S | Safety Connect® ¹⁵ — includes Emergency Assistance, Stolen Vehicle Locator, Roadside Assistance ³⁷ and Automatic Collision Notification; three-year trial subscription. See toyota.com/safety-connect for details. | — | — | S |
| | Driver and front passenger Advanced Airbag System ²⁸ | S | S | S | Color Head-Up Display (HUD) with speedometer, navigation, Hybrid System Indicator, battery charge, and Toyota Safety Sense™ P (TSS-P) ²⁹ alerts | — | — |
| Driver and front passenger front seat-mounted side airbags, passenger seat cushion airbag, driver's knee airbag, and front and rear curtain shield airbags ²⁸ | S | S | S | Intelligent Clearance Sonar (ICS) ³⁹ with Intelligent Parking Assist (IPA) ⁴⁰ | — | — | S |
| Toyota Safety Sense™ P (TSS-P) ²⁹ — Pre-Collision System ³⁰ with Pedestrian Detection ³¹ (PCS w/PD), Lane Departure Alert with Steering Assist (LDA w/SA), ³² Automatic High Beams ³³ and Full-Speed Range Dynamic Radar Cruise Control (DRCC) ³⁴ | S | S | S | Hill Start Assist Control (HAC) ⁴¹ | S | S | S |
| LATCH (Lower Anchors and Tethers for Children) includes lower anchors on rear seats | S | S | S | Blind Spot Monitor (BSM) ⁴² with Rear Cross-Traffic Alert (RCTA) ⁴³ | — | — | S |
| Tire Pressure Monitor System (TPMS) ³⁵ | S | S | S | Engine immobilizer ⁴⁴ | S | S | S |
| Vehicle Proximity Notification System (VPNS) ³⁶ | S | S | S | Tire Repair System | S | S | S |
| | | | | Additional year of roadside assistance, ^{37,38} for a total of 3 years of roadside assistance from date of purchase | S | S | S |

S = Standard — = Not available

SPECIFICATIONS

MECHANICAL/PERFORMANCE

| | PLUS | PREMIUM | ADVANCED |
|---|----------|----------|----------|
| POWER OUTPUT | | | |
| Hybrid system net power: 121 hp (90 kW) | Standard | Standard | Standard |
| ENGINE | | | |
| 1.8-Liter 4-cylinder Aluminum DOHC 16-Valve with Variable Valve Timing with intelligence (VVT-i), EV ²⁰ /ECO/POWER Modes; 95 hp @ 5200 rpm (71 kW @ 5200 rpm), 105 lb.-ft. @ 3600 rpm (142 N•m @ 3600 rpm) | Standard | Standard | Standard |
| Compression ratio: 13.0:1 | Standard | Standard | Standard |
| Induction system: Sequential multi-point EFI with Electronic Throttle Control System with intelligence (ETCS-i) | Standard | Standard | Standard |
| EMISSION RATING | | | |
| Federal Environmental Protection Agency (EPA) Emission Standard: Tier 3 Bin 30 | Standard | Standard | Standard |
| California Air Resources Board (CARB) Emission Standard: Low Emission Vehicle (LEV) III, Super Ultra Low Emission Vehicle (SULEV) ³⁰ | Standard | Standard | Standard |
| ELECTRIC MOTOR | | | |
| Motor type: Permanent magnet AC synchronous motor | Standard | Standard | Standard |
| Voltage: 600V maximum | Standard | Standard | Standard |
| TRACTION BATTERY | | | |
| Type: Lithium-ion (Li-ion) | Standard | Standard | Standard |
| Voltage: 351.5V | Standard | Standard | Standard |
| Battery capacity (kWh) | 8.8 | 8.8 | 8.8 |
| Battery weight (lb.) | 265 | 265 | 265 |
| TRANSMISSION | | | |
| Electronically controlled Continuously Variable Transmission (ECVT) | Standard | Standard | Standard |
| DRIVETRAIN | | | |
| Front-Wheel Drive | Standard | Standard | Standard |
| SUSPENSION | | | |
| Independent MacPherson strut front suspension and double-wishbone style multi-link rear suspension with front and rear stabilizer bars | Standard | Standard | Standard |
| STEERING | | | |
| Electric Power Steering (EPS); power-assisted rack-and-pinion | Standard | Standard | Standard |
| Steering: Turning circle diameter, curb to curb (ft.) | 33.4 | 33.4 | 33.4 |
| BRAKES | | | |
| Power-assisted ventilated front disc brakes; solid rear disc with integrated regenerative braking and Star Safety System™ | Standard | Standard | Standard |

See numbered footnotes in Disclosures section.

SPECIFICATIONS (continued)

| | PLUS | PREMIUM | ADVANCED |
|--|-----------------------|-----------------------|-----------------------|
| DIMENSIONS | | | |
| EXTERIOR (IN.) | | | |
| Overall height/width/length | 57.9/69.3/182.9 | 57.9/69.3/182.9 | 57.9/69.3/182.9 |
| Wheelbase | 106.3 | 106.3 | 106.3 |
| Track (front/rear) | 60.2/60.6 | 60.2/60.6 | 60.2/60.6 |
| Overhang (front/rear) | 38.4/38.2 | 38.4/38.2 | 38.4/38.2 |
| Ground clearance | 4.8 | 4.8 | 4.8 |
| INTERIOR (FRONT/REAR) (IN.) | | | |
| Head room | 39.4/37.2 | 39.4/37.2 | 39.4/37.2 |
| Shoulder room | 54.2/53.0 | 54.2/53.0 | 54.2/53.0 |
| Hip room | 53.7/51.6 | 53.7/51.6 | 53.7/51.6 |
| Leg room | 43.2/33.4 | 43.2/33.4 | 43.2/33.4 |
| Curb weight (lb.) | 3365 | 3375 | 3375 |
| Seating capacity | 4 | 4 | 4 |
| WEIGHTS AND CAPACITIES | | | |
| EPA-estimated passenger volume (cu. ft.) | 91.5 | 91.5 | 91.5 |
| EPA-estimated cargo volume (cu. ft.) ⁴⁵ | 19.8 | 19.8 | 19.8 |
| EPA-estimated interior volume (interior passenger volume + cargo volume) (cu. ft.) ⁴⁵ | 111.3 | 111.3 | 111.3 |
| Fuel tank (gal.) | 11.4 | 11.4 | 11.4 |
| TIRES | | | |
| Size: P195/65R15 | Standard | Standard | Standard |
| Spare: temporary repair kit | Standard | Standard | Standard |
| MILEAGE ESTIMATES | | | |
| EPA-estimated hybrid mode mpg (city/highway/combined) ⁴⁶ | 55/53/54 | 55/53/54 | 55/53/54 |
| EPA-estimated MPGe ⁴⁷ | 133 | 133 | 133 |
| EPA-estimated total driving range ⁴⁸ | 640 mi. | 640 mi. | 640 mi. |
| EPA-estimated EV Mode ²⁰ driving range ⁴⁹ | 25 mi. (up to 84 mph) | 25 mi. (up to 84 mph) | 25 mi. (up to 84 mph) |
| BATTERY CHARGING TIME | | | |
| Standard outlet ⁵⁰ /240V (public charging) charging time (hr.:min.) | <5:30/~2:10 | <5:30/~2:10 | <5:30/~2:10 |

CARS BUILT FOR THE WAY YOU LIVE

At Toyota, we build cars for how you live. From building advanced safety features designed to help prevent crashes to driving cross-country to understand how we can make your driving experience better, our work starts with understanding your needs. Building cars for how you live also means thinking about tomorrow — from fuel efficiency and environmental innovations, to things beyond cars, like a bicycle that you can control with your mind. And because what we learn building cars can help improve lives in other places, we do things like help communities rebuild their homes quickly after a disaster and work with soup kitchens to help them serve more people faster. Toyota. Built for how you live. Together we are going places.

DISCLOSURES

1. Toyota strives to build vehicles to match customer interest and thus they typically are built with popular options and option packages. Not all options/packages are available separately and some may not be available in all regions of the country. If you would prefer a vehicle with no or different options, contact your dealer to check for current availability or the possibility of placing a special order. **2.** Maximum operation duration of this system is ten minutes. System may not operate if the hybrid battery is under load or if the battery charge is low. While plugged in, this system operates using power from grid. See your *Owner's Manual* for further information. **3.** Be sure to obey traffic regulations and maintain awareness of road and traffic conditions at all times. Availability and accuracy of the information provided by the navigation system is dependent upon many factors. Use common sense when relying on information provided. Services and programming subject to change. Services not available in every city or roadway. Updates may be available from your dealer at an additional cost. See *Owner's Manual* for details. **4.** Be sure to obey traffic regulations and maintain awareness of road and traffic conditions at all times. Apps/services vary by phone/carrier; functionality depends on many factors. Select apps use large amounts of data; you are responsible for charges. Apps and services subject to change at any time without notice. See toyota.com/entune for details. **5.** HD Radio™ Technology manufactured under license from iBiquity Digital Corporation U.S. and Foreign Patents. HD Radio™ and the HD, HD Radio, and "Arc" logos are proprietary trademarks of iBiquity Digital Corp. **6.** May not be compatible with all mobile phones, MP3/WMA players and like models. **7.** iPod® is a registered trademark of Apple Inc. All rights reserved. **8.** Advanced voice recognition capabilities vary by head unit. **9.** The Bluetooth® word mark and logos are registered trademarks owned by Bluetooth SIG, Inc., and any use of such marks by Toyota is under license. A compatible Bluetooth®-enabled phone must first be paired. Phone performance depends on software, coverage and carrier. **10.** Always drive safely, obey traffic laws and focus on the road while driving. Siri® is available on select iPhone®/iPad® models and requires Internet access. Siri® is not available in all languages or all areas and features vary by area. Some Siri® functionality and commands are not accessible in the vehicle. Data charges may apply. See apple.com and phone carrier for details. Siri® is a registered trademark of Apple Inc. **11.** SiriusXM® audio services require a subscription sold separately by Sirius XM Radio Inc. If you decide to continue service after your trial, the subscription plan you choose will automatically renew thereafter and you will be charged according to your chosen payment method at then-current rates. Fees and taxes apply. To cancel, you must call SiriusXM at 1-866-635-2349. See SiriusXM Customer Agreement for complete terms at www.siriusxm.com. All fees and programming subject to change. Not all vehicles or devices are capable of receiving all services offered by SiriusXM. Current information and features may not be available in all locations, or on all receivers. ©2018 Sirius XM Radio Inc. SiriusXM and all related marks and logos are trademarks of Sirius XM Radio Inc. **12.** SiriusXM® All Access trial length and service availability may vary by model, model year or trim. **13.** JBL® is a registered trademark of Harman International Industries, Inc. **14.** Prius Prime apps require active subscription to Safety Connect® and download of Entune® App Suite to compatible smartphone. **15.** Toyota Safety Connect® is dependent upon an operative telematics device, a cellular connection and other factors outside of Toyota's control, which can limit the ability to reach the response center or receive emergency support or otherwise limit the functionality or availability of the system. Terms and conditions of subscription service agreement apply. To learn about Toyota's data collection, use, sharing and retention, please visit <https://www.toyota.com/privacyvts/>. Stolen vehicle police report required to use Stolen Vehicle Locator. **16.** The Safety Connect® trial period is at no extra cost and begins on the original date of purchase or lease of a new vehicle. After the trial period expires, enrollment in paid subscription is required to access the service. Terms and conditions apply. **17.** The backup camera does not provide a comprehensive view of the rear area of the vehicle. You should also look around outside your vehicle and use your mirrors to confirm rearward clearance. Environmental conditions may limit effectiveness and view may become obscured. See *Owner's Manual* for additional limitations and details. **18.** Predictive Fuel-Efficient Drive systems require a destination entry in the navigation system for use. See *Owner's Manual* for details. **19.** SofTex® is a registered trademark of Toyota Motor Sales, U.S.A., Inc. **20.** CAUTION! When driving a hybrid vehicle, pay special attention to the area around the vehicle. Because there is little vehicle noise in EV Mode, pedestrians, people riding bicycles or other people and vehicles in the area may not be aware of the vehicle starting off or approaching them, so take extra care while driving. Prime's EV Mode has an EPA-estimated driving range of 25 miles, allowing it to work under certain conditions at full highway speeds. EV Mode range will vary and is dependent upon many factors, including charging practice, driving style, road/traffic conditions, outside temperature, air conditioning control levels, payload/cargo weight, proper tire pressure, vehicle maintenance and battery age. Battery capacity will decrease with time and use. See *Owner's Manual* for details. **21.** The Smart Key System may interfere with some pacemakers or cardiac defibrillators. If you have one of these medical devices, please talk to your doctor to see if you should deactivate this system. **22.** HomeLink® and the HomeLink® house icon are registered trademarks of Gentex Corporation. **23.** Qi wireless charging may not be compatible with all mobile phones, MP3/WMA players and like models. When using the wireless charging system, avoid placing metal objects between the wireless charger and the mobile device when charging is active. Doing so may cause metal objects to become hot and could cause burns. **24.** 2018 Prius Prime EPA-estimated MPGe. Actual MPGe will vary and is dependent upon many factors, including charging practice, driving style, road/traffic conditions, outside temperature, air conditioning control levels, payload/cargo weight, proper tire pressure, vehicle maintenance, battery age and changes in energy costs. Battery capacity will decrease with time and use. For more information on MPGe and range, please see www.fueleconomy.gov. **25.** Vehicle Stability Control is an electronic system designed to help the driver maintain vehicle control under adverse conditions. It is not a substitute for safe and attentive driving practices. Factors including speed, road conditions, weather and driver steering input can all affect whether VSC will be effective in preventing a loss of control. See *Owner's Manual* for additional limitations and details. **26.** Brake Assist is designed to help the driver take full advantage of the benefits of ABS. It is not a substitute for safe driving practices. Braking effectiveness also depends on proper vehicle maintenance, and tire and road conditions. See *Owner's Manual* for additional limitations and details. **27.** Smart Stop Technology® operates only in the event of certain contemporaneous brake and accelerator pedal applications. When engaged, the system will reduce power to help the brakes bring the vehicle to a stop. Factors including speed, road conditions and driver input can all impact stopping distance. Smart Stop Technology® is not a substitute for safe and attentive driving and does not guarantee instant stopping. See *Owner's Manual* for details. **28.** All the airbag systems are Supplemental Restraint Systems. All airbags (if installed) are designed to inflate only under certain conditions and in certain types of severe collisions. To decrease the risk of injury from an inflating airbag, always wear seatbelts and sit upright in the middle of the seat as far back as possible. Do not put objects in front of an airbag or around the seatback. Do not use a rearward-facing child seat in any front passenger seat. See *Owner's Manual* for additional limitations and details. **29.** Drivers are responsible for their own safe driving. Always pay attention to your surroundings and drive safely. System effectiveness is dependent on many factors including road, weather and vehicle conditions. See *Owner's Manual* for additional limitations and details. **30.** The TSS Pre-Collision System is designed to help avoid or reduce the crash speed and damage in certain frontal collisions only. It is not a substitute for safe and attentive driving. System effectiveness is dependent on many factors including road, weather and vehicle conditions. See *Owner's Manual* for additional limitations and details. **31.** The Pedestrian Detection system is designed to detect a pedestrian ahead of the vehicle, determine if impact is imminent and help reduce impact speed. It is not a substitute for safe and attentive driving. System effectiveness depends on many factors, such as speed, size and position of pedestrian, and weather, light and road conditions. See *Owner's Manual* for additional limitations and details. **32.** Lane Departure Alert with Steering Assist is designed to read visible lane markers under certain conditions. It provides a visual and audible alert, and slight steering force when lane departure is detected. It is not a collision-avoidance system or a substitute for safe and attentive driving. Effectiveness is dependent on many factors including road, weather and vehicle conditions. See *Owner's Manual* for additional limitations and details. **33.** Automatic High Beams operate at speeds above 25 mph. Factors such as a dirty windshield, weather, lighting and terrain limit effectiveness, requiring the driver to manually operate the high beams. See *Owner's Manual* for additional limitations and details. **34.** Dynamic Radar Cruise Control is designed to assist the driver and is not a substitute for safe and attentive driving practices. System effectiveness is dependent on many factors including road, weather and traffic conditions. See *Owner's Manual* for additional limitations and details. **35.** The Tire Pressure Monitor System alerts the driver when tire pressure is critically low. For optimal tire wear and performance, tire pressure should be checked regularly with a gauge; do not rely solely on the monitor system. See *Owner's Manual* for details. **36.** This device is not a substitute for safe and attentive driving practices. It is the driver's responsibility to maintain a lookout for pedestrians, cyclists, other cars and objects, and to drive the vehicle in a safe and attentive manner to avoid making contact. **37.** Roadside Assistance coverage is 3 years unlimited mileage. Does not include parts and fluids, except emergency fuel delivery. See Toyota dealer for details and exclusions. Valid only in the continental U.S. and Alaska. **38.** GreenEdge is a registered trademark of Harman International Industries, Inc. **39.** Intelligent Clearance Sonar (ICS) is designed to assist drivers in avoiding potential

DISCLOSURES (CONTINUED)

collisions at speeds of 9 mph or less. Certain vehicle and environmental factors, including an object's shape, size and composition, may affect the system's effectiveness. Always look around outside the vehicle and use mirrors to confirm clearance. See *Owner's Manual* for additional limitations and details. **40.** The Intelligent Parking Assist system requires driver brake control. Always look around outside the vehicle and use mirrors to confirm clearance. See *Owner's Manual* for additional limitations and details. **41.** Hill Start Assist Control is designed to help minimize backward rolling on steep ascents. It is not a substitute for safe driving judgment and practices. Factors including speed, grade, surface conditions and driver input can all affect whether HAC will be effective in preventing a loss of control. See *Owner's Manual* for additional limitations and details. **42.** Do not rely exclusively on the Blind Spot Monitor. Always look over your shoulder and use your turn signal. There are limitations to the function, detection and range of the monitor. See *Owner's Manual* for additional limitations and details. **43.** Do not rely exclusively on the Rear Cross-Traffic Alert system. Always look over your shoulder and use your mirrors to confirm rear clearance. There are limitations to the function, detection and range of the system. See *Owner's Manual* for additional limitations and details. **44.** The engine immobilizer is a state-of-the-art anti-theft system. When you insert your key into the ignition switch or bring a Smart Key fob into the vehicle, the key transmits an electronic code to the vehicle. The engine will only start if the code in the transponder chip inside the key/fob matches the code in the vehicle's immobilizer. Because the transponder chip is embedded in the key/fob, it can be costly to replace. If you lose a key or fob, your Toyota dealer can help. Alternatively, you can find a qualified independent locksmith to perform high-security key services by consulting your local Yellow Pages or by contacting www.aloa.org. **45.** Cargo and load capacity limited by weight and distribution. Always properly secure cargo and cargo area. **46.** 2019 Prius Prime EPA-estimated 55 city/53 hwy/54 combined mpg. Actual mpg will vary based on driving habits, weather, temperature and road/traffic conditions. For more information on mpg, please see www.fueleconomy.gov. **47.** 2019 Prius Prime EPA-estimated 133 combined MPGe. Actual MPGe will vary. Battery capacity will decrease with time and use. See www.fueleconomy.gov. **48.** 2019 Prius Prime EPA-estimated 55 city/53 hwy/54 combined mpg estimates and 133 combined MPGe estimate when fully charged and with a full tank of gas. Excludes driving conditions. Actual mileage will vary. **49.** Calculations based on 2019 Prius Prime EPA-estimated 133 combined MPGe when vehicle is fully charged. Excludes driving conditions. Actual mileage traveled in EV Mode will vary and is dependent on many factors such as traffic, road and weather conditions, vehicle maintenance, driving speed and cargo load. **50.** Charge time is for standard 120V outlet. Always plug-in in accordance with *Owner's Manual*. **51.** Extra-cost color. **52.** Based on 2018 Prius Prime EPA-estimated combined 133 MPGe, and non-luxury plug-in hybrid segment from www.fueleconomy.gov. Actual mileage will vary. **53.** EV Auto Mode requires some level of charge to activate EV Mode driving, and will trigger the engine as the battery drains, especially when accelerating. There are limited driving conditions—largely due to climate and temperature—that may require EV Auto Mode to turn off. See *Owner's Manual* for details. **54.** Vehicle must be properly plugged into an operational power source to complete a Charge Now request. **55.** This floor mat/floor liner was designed specifically for use in your model and model year vehicle and SHOULD NOT be used in any other vehicle. To avoid potential interference with pedal operation, each mat/liner must be secured with its fasteners. Do not install a floor mat/floor liner on top of an existing floor mat/floor liner. **56.** Removable cross bars not recommended for luggage. **57.** The Toyota Genuine Accessory Warranty will only apply when the installation is performed by a trained Toyota-approved installer. Please see dealer for details. **58.** The universal tablet holder is intended for passengers only. Drivers should always be sure to obey traffic regulations and maintain awareness of the road and traffic conditions at all times. Use of aftermarket accessories may pose an increased risk of injury to occupants in the event of an accident. Tablet sold separately.

Toyota strives to build vehicles to match customer interest and thus they typically are built with popular options and option packages. Not all options/packages are available separately and some may not be available in all regions of the country. See toyota.com for information about options/packages commonly available in your area. If you would prefer a vehicle without any or with different options, contact your dealer to check for current availability or the possibility of placing a special order.

Some vehicles are shown with available equipment. Seatbelts should be worn at all times. For details on vehicle specifications, standard features and available equipment in your area, contact your Toyota dealer. A vehicle with particular equipment may not be available at the dealership. Ask your Toyota dealer to help locate a specifically equipped vehicle.

All information presented herein is based on data available at the time of posting, is subject to change without notice and pertains specifically to mainland U.S.A. vehicles only.

WARRANTIES

Every Toyota Car, Truck and SUV is built to exceptional standards. And that's not idle boasting. We back it up with these Limited Warranty Coverages:

Basic: 36 months/36,000 miles (all components other than normal wear and maintenance items).

Hybrid-Related Component Coverage: Hybrid-related components, including the HV battery, battery control module, hybrid control module and inverter with converter, are covered for 8 years/100,000 miles. The HV battery may have longer coverage under emissions warranty. Refer to applicable Warranty and Maintenance Guide for details.

Powertrain: 60 months/60,000 miles (engine, transmission/transaxle, drive system, seatbelts and airbags).

Rust-Through: 60 months/unlimited miles (corrosion perforation of sheet metal).

Emissions: Coverages vary under Federal and California regulations. Refer to applicable *Warranty and Maintenance Guide* for details.

Accessories: For Genuine Toyota Accessories purchased at the time of the new vehicle purchase, the Toyota Accessory Warranty coverage is in effect for 36 months/36,000 miles from the vehicle's in-service date, which is the same coverage as the Toyota New Vehicle Limited Warranty.

For Genuine Toyota Accessories purchased after the new vehicle purchase the coverage is 12 months, regardless of mileage, from the date the accessory was installed on the vehicle, or the remainder of any applicable new vehicle warranty, whichever provides greater coverage.

You may be eligible for transportation assistance if it's necessary that your vehicle be kept overnight for repairs covered under warranty. Please see your authorized Toyota dealership for further details.

For complete details about Toyota's warranties, please visit www.toyota.com, refer to the applicable *Warranty and Maintenance Guide* or see your Toyota dealer.

Vehicles shown may be prototypes and/or shown with options. Actual model may vary.



For Toyota Mobility program details, go to www.toyota.com/mobility or call the Toyota Customer Assistance Center at 1-800-331-4331