

RAV4

2016



TOYOTA

Let's
Go
Places

Take your adventures further than ever before.

Get ready to do more in the new 2016 Toyota RAV4. It's got the look you crave: a daring front end, restyled rear fascia, sleek exterior and stylish new wheels. Available integrated fog lights and new available LED lighting — including high-/low-beam headlights, taillights and Daytime Running Lights (DRL) — all help make the road ahead even brighter. Also available with our proven Hybrid Synergy Drive® system, it's a package that's as athletic as it is refined, and it's ready to take you on that next great journey. Let's go places.



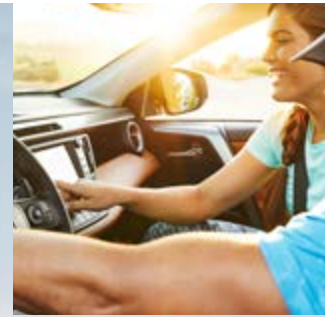
*"Our gear is loaded up,
and we're ready to go.
Let's do this."*



SE shown in Hot Lava. Limited Hybrid shown in Electric Storm Blue.

Leave a lasting impression wherever the adventure takes you.

This is one fun-to-drive SUV that's big on personality. RAV4 Limited Hybrid comes with attractive 18-in. SuperChrome wheels, unique Hybrid badging and exclusive blue Toyota emblems for a distinctive look. RAV4 SE shows off its athletic side with a honeycomb grille and sporty 18-in. alloy wheels. The available S-Code Package adds unmistakable style with silver-painted accents on the front and rear bumpers, side trim and fenders.



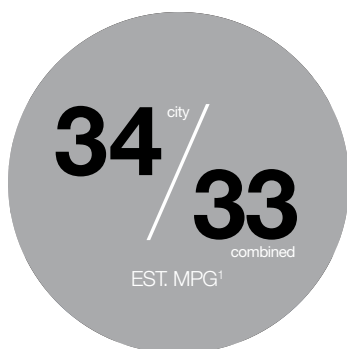
"We know where we're going. Now let's go that extra mile."



SE shown in Black Sand Pearl with available S-Code paint treatment. Limited Hybrid shown in Electric Storm Blue.

Redefine what a hybrid SUV can do, with more efficiency and excitement.

Let's bring tech, style and efficiency to every adventure. With RAV4 Hybrid's advanced innovations and Toyota's proven hybrid powertrain, you can make the most of any trip. And in addition to great fuel economy, RAV4 Hybrid adds extra oomph with 194 net horsepower and outstanding acceleration. For extra confidence when Mother Nature rains on your parade, the available Electronic On-Demand All-Wheel Drive with intelligence (AWD-i) is designed to help make any trek a sure-footed experience, with an electric motor that delivers instant torque to the rear wheels when you need more traction. It helps you get even more from everything you want to do.



ESTIMATED 34 MPG¹

RAV4 Hybrid engages a variety of future-forward tech to help make every journey as efficient as possible. You'll enjoy the extra thrills that come from the power and acceleration, and with RAV4 Hybrid's EPA-estimated 34 mpg city,¹ your wallet will be happy too.



HYBRID GAUGE CLUSTER

Stay on top of it all. RAV4 Hybrid's unique gauge cluster lets you monitor the Hybrid Synergy Drive® system with just a glance. You can quickly track when the system is charging and providing power to the drive wheels, so you can get the most out of every drive.



HYBRID ENERGY MONITOR

RAV4 Hybrid has the tools to help increase the efficiency of your drive. The energy monitor indicates the operation of the gas engine, electric motor generator and hybrid battery. As conditions change, it provides real-time information showing how power is being routed to the drive wheels, or how the battery is being charged.

1. See footnote 41 in Disclosures section.



Limited Hybrid shown in Electric Storm Blue.

A rewarding space where technology meets luxury.

Enjoy every trip, from uphill to downtown, in RAV4's roomy interior. The driver and front passenger enjoy available heated seats and dual zone automatic climate control. Another convenient piece of tech is the available Smart Key System.¹ The available luxurious leather-trimmed steering wheel, available Entune™ Premium Audio with Integrated Navigation² and App Suite,³ SiriusXM® Satellite Radio⁴ with a 3-month complimentary SiriusXM All Access trial, and frameless HomeLink®-capable mirror⁵ further enhance the high-tech experience. Immerse yourself in the redesigned interior and drive in complete comfort.



BIRD'S EYE VIEW CAMERA WITH PERIMETER SCAN

RAV4's available Bird's Eye View Camera⁶ helps you see nearby objects and get into and out of small spaces with ease. The system includes Perimeter Scan — an innovative feature that displays live, rotating 360-degree views of your surroundings when you're parked.



INTEGRATED NAVIGATION

RAV4 offers a selection of Integrated Navigation systems to help guide you on your next adventure. Choose from Entune™ Premium Audio with Integrated Navigation and App Suite, and Entune™ Premium JBL® Audio with Integrated Navigation and App Suite, featuring JBL® GreenEdge™ speakers. Both offer the convenience and clarity of SiriusXM® Satellite Radio.



SOFTEX® DRIVER'S SEAT WITH MEMORY FUNCTION

RAV4 helps you customize your comfort. Available multi-stage heated SofTex®-trimmed front seats help tame those chilly nights. And finding the perfect driving position is never an issue, thanks to an available 8-way power-adjustable driver's seat with memory function and power lumbar support.

1. See footnote 21 in Disclosures section. 2. See footnote 18 in Disclosures section. 3. See footnote 7 in Disclosures section. 4. See footnote 16 in Disclosures section. 5. See footnote 42 in Disclosures section. 6. See footnote 6 in Disclosures section.

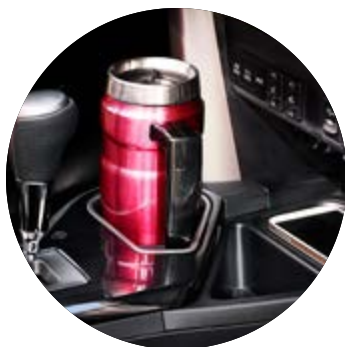


Limited Hybrid interior shown in Cinnamon with available Entune™ Premium JBL® Audio with Integrated Navigation¹ and App Suite²

1. See footnote 18 in Disclosures section. 2. See footnote 7 in Disclosures section.

Expand your horizons and your personal space.

RAV4 makes comfort and convenience a priority. Reduced noise, vibration and harshness help make for a quiet cabin, and the available flexible cargo net system and second-row seats with a reclining, folding 60/40 split let you easily reconfigure the cargo area to meet your needs. With this much space, you can get busy expanding your horizons.



CUP HOLDER

Bring your favorite beverage along for the ride. RAV4 features an improved cup holder design that can accommodate your favorite travel mugs—handles and all.



POWER LIFTGATE

RAV4 is available with a power rear liftgate featuring jam protection, plus a selectable height-adjustment feature. Simply raise the liftgate to your ideal height, then press and hold the cargo door button for two seconds until a confirmation beep sounds. Now, whether you open the liftgate via release or key fob, it will open to the desired height every time.



CARGO AREA

RAV4's generous cargo area lets you take the fun wherever you go. Whether you fold the 60/40 split second-row seats flat or leave them upright, with RAV4's up to 73.4 cubic feet of cargo capacity,¹ there's always plenty of space in the back. So go ahead: Bring your friends and all their gear. There's no reason to leave any of the fun behind.

¹. See footnote 39 in Disclosures section.



SE interior shown in Black with available flexible cargo net system.

Raise the bar with a spirited driving experience.

Drive with confidence. RAV4 SE's available All-Wheel Drive features an innovative Dynamic Torque-Control AWD system. It helps enhance handling by distributing engine power from front to rear and manages the vehicle's braking system from side to side for optimal control. Sport Mode provides a more exciting drive, with thrilling acceleration and revised shift points from the 6-speed automatic transmission.



SE GAUGE CLUSTER

Sporty touches for an inspiring drive. RAV4 SE features performance-inspired styling cues such as eye-catching red needles and red gauge cluster illumination. It all helps you stay informed with just a glance so you can stay focused on the drive ahead.



SE PADDLE SHIFTERS

Paddle shifters let you shift gears without letting go of the wheel. A light touch on either lever gives you rapid gear changes and a more engaging drive. It's one more way RAV4 SE helps keep you in control of the fun.



SUSPENSION

Comfort and control. RAV4's suspension has been improved to provide a smoother ride on the highway. For those with an athletic soul, RAV4 SE features a sport-tuned suspension with attractive blue shocks up front to deliver a more spirited drive.



SE shown in Hot Lava.



Features designed for your safety.

The road can be unpredictable. That's why RAV4 is equipped with eight standard airbags¹ and integrated features like the Star Safety System™ and available Toyota Safety Sense™ P (TSS-P).² This newly developed package of safety features combines the Pre-Collision System³ with Pedestrian Detection⁴ (PCS w/PD), Lane Departure Alert⁵ with Steering Assist (LDA w/SA), Auto High Beams (AHB)⁶ and Dynamic Radar Cruise Control (DRCC)⁷ to assist you. TSS-P's comprehensive features create in-the-moment safety designed to help support your awareness and decision-making on the road.



PRE-COLLISION SYSTEM WITH PEDESTRIAN DETECTION

The available Pre-Collision System with Pedestrian Detection helps keep the road safe by detecting pedestrians in certain situations. By combining millimeter-wave radar with a camera capable of shape recognition, the system provides an audible warning and a display notification to alert you of a possible collision with a pedestrian under certain circumstances. If you don't react, automatic braking and collision-avoidance support is then given to help prevent a collision.



DYNAMIC RADAR CRUISE CONTROL

Designed to improve your drive, RAV4's available Dynamic Radar Cruise Control works like conventional cruise control, but can do even more. Using forward-sensing radar technology, the system can automatically adjust vehicle speed to help maintain a preset following distance between you and the vehicle directly in front of you.



LANE DEPARTURE ALERT WITH STEERING ASSIST

Available Lane Departure Alert helps you stay in your lane. The system detects visible painted lane markings on the road and alerts you if you start to drift out of your lane. An audible beep and flashing light on the instrument panel alert you to take corrective action. When combined with Steering Assist, LDA helps keep RAV4 in its lane by providing gentle corrective steering when necessary.

1. See footnote 31 in Disclosures section. 2. See footnote 22 in Disclosures section. 3. See footnote 23 in Disclosures section. 4. See footnote 24 in Disclosures section. 5. See footnote 25 in Disclosures section. 6. See footnote 26 in Disclosures section. 7. See footnote 27 in Disclosures section.



Limited Hybrid shown in Electric Storm Blue. SE shown in Hot Lava.

RAV4 Models

LE



Powertrain

- 2.5L 4-Cylinder Engine
- 6-speed automatic transmission
- 176 hp @ 6000 rpm
- 172 lb.-ft. @ 4100 rpm
- Available Dynamic Torque-Control AWD

Exterior Features

- Projector-beam headlights with auto-off feature
- Front and rear skid plates
- Power outside mirrors with folding feature and blind spot mirrors³
- Roof rails
- 17-in. wide-vent steel wheels with wheel covers and P225/65R17 tires
- Automatic Limited-Slip Differential (Auto LSD)

Interior Features

- Backup camera⁵ with projected path
- Entune™ Audio
- Tilt/telescopic urethane steering wheel with audio, Multi-Information Display (MID), advanced voice recognition¹² and Bluetooth^{®14} hands-free phone controls
- Fabric-trimmed 6-way adjustable driver's seat with seatback pocket; 4-way adjustable front passenger seat with seatback pocket
- Fabric-trimmed 60/40 split, reclining, fold-flat second-row seat with center armrest

Options

- Flexible cargo net tray
- Entune™ Audio Plus with Connected Navigation App⁷
- Rear cargo mat

XLE

Adds to or replaces features offered on LE



Powertrain

- 2.5L 4-Cylinder Engine
- 6-speed automatic transmission
- 176 hp @ 6000 rpm
- 172 lb.-ft. @ 4100 rpm
- Available Dynamic Torque-Control AWD

Exterior Features

- Halogen projector-beam headlights with auto on/off feature
- Integrated fog lights
- Silver-highlighted lower grille
- 17-in. 5-spoke alloy wheels with P225/65R17 tires
- Power tilt/slide moonroof with sunshade
- Height-adjustable power liftgate with jam protection

Interior Features

- 4.2-in. TFT Multi-Information Display (MID)
- Dual zone automatic climate control with air filter
- Tilt/telescopic leather-trimmed steering wheel with audio, Multi-Information Display (MID), advanced voice recognition¹² and Bluetooth^{®14} hands-free phone controls
- Fabric-trimmed 6-way adjustable driver's seat with sport bolsters and seatback pocket; 4-way adjustable front passenger seat with sport bolsters and seatback pocket

Options

- Flexible cargo net tray
- Entune™ Premium Audio with Integrated Navigation¹⁸ and App Suite⁷
- Convenience Package — Smart Key System²¹ (XLE gas models only), Blind Spot Monitor (BSM)⁴ and Rear Cross-Traffic Alert (RCTA)³³ front and rear parking sonar,² Entune™ Premium Audio with Integrated Navigation¹⁸ and App Suite⁷, and Toyota Safety Sense™ P (TSS-P)²²
- Rear cargo mat

SE

Adds to or replaces features offered on XLE



Powertrain

- 2.5L 4-Cylinder Engine
- 6-speed automatic transmission
- 176 hp @ 6000 rpm
- 172 lb.-ft. @ 4100 rpm
- Available Dynamic Torque-Control AWD

Exterior Features

- LED projector-beam headlights with auto on/off feature
- LED Daytime Running Lights (DRL)
- 18-in. 5-spoke sport alloy wheels with P235/55R18 tires
- Black-painted heated power outside mirrors with turn signal indicators and folding feature

Interior Features

- Entune™ Audio Plus with Connected Navigation App⁷
- 4.2-in. TFT Multi-Information Display (MID)
- Steering wheel-mounted paddle shifters
- SofTex[®]-trimmed 8-way power-adjustable driver's seat with memory function, power lumbar support, sport bolsters and seatback pocket; 4-way adjustable front passenger seat with sport bolsters and seatback pocket
- Driver and front passenger heated seats
- SofTex[®]-trimmed 60/40 split, reclining, fold-flat second-row seat with center armrest
- Smart Key System²¹ with Push Button Start and remote power liftgate function
- Blind Spot Monitor (BSM)⁴ and Rear Cross-Traffic Alert (RCTA)³³

Options

- Flexible cargo net tray
- Entune™ Premium JBL® Audio with Integrated Navigation¹⁸ and App Suite⁷
- Advanced Technology Package — Bird's Eye View Camera⁶ with Perimeter Scan, front and rear parking sonar,² Entune™ Premium JBL® Audio with Integrated Navigation¹⁸ and App Suite⁷, and Toyota Safety Sense™ P (TSS-P)²²
- Available S-Code paint treatment
- Rear cargo mat

Limited

Adds to or replaces features offered on XLE



Powertrain

- 2.5L 4-Cylinder Engine
- 6-speed automatic transmission
- 176 hp @ 6000 rpm
- 172 lb.-ft. @ 4100 rpm
- Available Dynamic Torque-Control AWD

Exterior Features

- LED projector-beam headlights with auto on/off feature
- LED Daytime Running Lights (DRL)
- 18-in. 5-spoke SuperChrome alloy wheels with P235/55R18 tires
- Color-keyed heated power outside mirrors with turn signal indicators and folding feature

Interior Features

- Entune™ Premium Audio with Integrated Navigation¹⁸ and App Suite⁷
- Frameless auto-dimming rearview mirror
- Dynamic Radar Cruise Control (DRCC)²⁷
- Leather-trimmed shift lever with silver accents
- 4.2-in. TFT Multi-Information Display (MID)
- SofTex[®]-trimmed 8-way power-adjustable driver's seat with memory function, power lumbar support, sport bolsters and seatback pocket; 4-way adjustable front passenger seat with sport bolsters and seatback pocket
- Driver and front passenger heated seats
- SofTex[®]-trimmed 60/40 split, reclining, fold-flat second-row seat with center armrest
- Smart Key System²¹ with Push Button Start and remote power liftgate function
- Blind Spot Monitor (BSM)⁴ and Rear Cross-Traffic Alert (RCTA)³³

Options

- Flexible cargo net tray
- Entune™ Premium JBL® Audio with Integrated Navigation¹⁸ and App Suite⁷
- Advanced Technology Package — Bird's Eye View Camera⁶ with Perimeter Scan, and Entune™ Premium JBL® Audio with Integrated Navigation¹⁸ and App Suite⁷
- Rear cargo mat

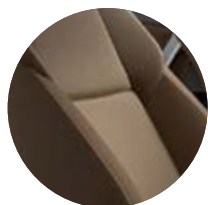
See numbered footnotes in Disclosures section.

Trim/Wheels*

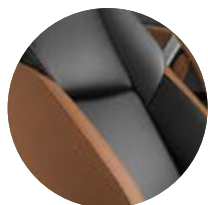
Trim



LE fabric shown in Black



XLE fabric shown in Nutmeg



SE SofTex® shown in Black with Cinnamon



Limited SofTex® shown in Ash

Also available in



Black



Ash

Also available in

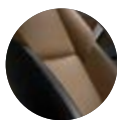


Black

Also available in



Black



Nutmeg



Cinnamon

Wheels



LE 17-in. wide-vent steel wheel with wheel cover



Limited 18-in. 5-spoke SuperChrome alloy wheel



SE 18-in. 5-spoke alloy wheel



XLE 17-in. 5-spoke alloy wheel



XLE Hybrid 17-in. 5-spoke alloy wheel

*Not all trims available on all model grades. See dealer for details.

RAV4 Hybrid Models

XLE Hybrid



Powertrain

- 2.5L 4-Cylinder Engine
- CVT
- 194 net hp
- Electronic On-Demand AWD with intelligence (AWD-i)

Exterior Features

- Halogen projector-beam headlights with auto on/off feature
- Integrated fog lights
- Silver-highlighted lower grille
- 17-in. 5-spoke alloy wheels with P225/65R17 tires
- Power tilt/slide moonroof with sunshade
- Height-adjustable power liftgate with jam protection

Interior Features

- Dual zone automatic climate control with air filter
- Tilt/telescopic leather-trimmed steering wheel with audio, Multi-Information Display (MID), advanced voice recognition¹² and Bluetooth^{®14} hands-free phone controls
- Fabric-trimmed 6-way adjustable driver's seat with sport bolsters and seatback pocket; 4-way adjustable front passenger seat with sport bolsters and seatback pocket
- Cargo area tonneau cover

Options

- Flexible cargo net tray
- Entune™ Premium Audio with Integrated Navigation¹⁸ and App Suite⁷
- Convenience Package — Blind Spot Monitor (BSM)⁴ and Rear Cross-Traffic Alert (RCTA);³³ front and rear parking sonar;² Entune™ Premium Audio with Integrated Navigation¹⁸ and App Suite;⁷ and Toyota Safety Sense™ P (TSS-P)²²
- Rear cargo mat

Limited Hybrid

Adds to or replaces features offered on XLE Hybrid



Powertrain

- 2.5L 4-Cylinder Engine
- CVT
- 194 net hp
- Electronic On-Demand AWD with intelligence (AWD-i)

Exterior Features

- LED projector-beam headlights with auto on/off feature
- LED Daytime Running Lights (DRL)
- 18-in. 5-spoke SuperChrome alloy wheels with P235/55R18 tires
- Color-keyed heated power outside mirrors with turn signal indicators and folding feature

Interior Features

- Entune™ Premium Audio with Integrated Navigation¹⁸ and App Suite⁷
- Frameless auto-dimming rearview mirror
- Dynamic Radar Cruise Control (DRCC)²⁷
- Leather-trimmed shift lever with silver accents
- 4.2-in. TFT Multi-Information Display (MID)
- SofTex[®]-trimmed 8-way power-adjustable driver's seat with memory function, power lumbar support, sport bolsters and seatback pocket; 4-way adjustable front passenger seat with sport bolsters and seatback pocket
- Driver and front passenger heated seats
- SofTex[®]-trimmed 60/40 split, reclining, fold-flat second-row seat with center armrest
- Smart Key System²¹ with Push Button Start and remote power liftgate function
- Blind Spot Monitor (BSM)⁴ and Rear Cross-Traffic Alert (RCTA)³³

Options

- Flexible cargo net tray
- Entune™ Premium JBL[®] Audio with Integrated Navigation¹⁸ and App Suite⁷
- Advanced Technology Package — Bird's Eye View Camera⁶ with Perimeter Scan, and Entune™ Premium JBL[®] Audio with Integrated Navigation¹⁸ and App Suite⁷
- Rear cargo mat

RAV4 Hybrid Color*

Color



Black Sand Pearl



Electric Storm Blue



Magnetic Gray Metallic



Classic Silver Metallic



Blizzard Pearl⁴³



Super White

RAV4 Model Color*

Color



Black



Electric Storm Blue



Black Currant Metallic



Barcelona Red Metallic



Hot Lava



Magnetic Gray Metallic



Silver Sky Metallic



Blizzard Pearl⁴³



Super White

Paint Option*

SE S-Code



Black Sand Pearl⁴³



Electric Storm Blue⁴³



Super White⁴³

Features¹

	LE	XLE	XLE HYBRID	SE	LIMITED	LIMITED HYBRID
EXTERIOR						
Projector-beam headlights with auto-off feature	S	—	—	—	—	—
Halogen projector-beam headlights with auto-off feature	—	S	S	—	—	—
Halogen projector-beam headlights with auto on/off feature	—	P	P	—	—	—
LED projector-beam headlights with auto-off feature	—	—	—	S	—	—
LED projector-beam headlights with auto on/off feature	—	—	—	P	S	S
Halogen Daytime Running Lights (DRL)	S	S	S	—	—	—
LED Daytime Running Lights (DRL)	—	—	—	S	S	S
Color-keyed rear spoiler	S	S	S	S	S	S
Front bumper integrated fog lights	—	S	S	S	S	S
Automatic Limited-Slip Differential (Auto LSD)	S	S	—	S	S	—
Dynamic Torque-Control AWD	O	O	—	O	O	—
Electronic On-Demand AWD with intelligence (AWD-i)	—	—	S	—	—	S
Front and rear parking sonar ²	—	P	P	P	S	S
17-in. wide-vent steel wheels with wheel covers and P225/65R17 tires	S	—	—	—	—	—
17-in. 5-spoke alloy wheels with P225/65R17 tires	—	S	S	—	—	—
18-in. 5-spoke Sport alloy wheels with P235/55R18 tires	—	—	—	S	—	—
18-in. 5-spoke SuperChrome alloy wheels with P235/55R18 tires	—	—	—	—	S	S
Color-keyed roof-mounted shark-fin antenna	S	S	S	S	S	S
Color-keyed outside door handles	S	S	S	S	—	—
Chrome outside door handles	—	—	—	—	S	S
Front and rear silver-painted bumper garnish	—	S	S	S	S	S
Power outside mirrors with folding feature and blind spot mirrors ³	S	—	—	—	—	—
Color-keyed heated power outside mirrors, blind spot mirrors, ³ turn signal indicators and folding feature	—	S	S	—	—	—
Color-keyed heated power outside mirrors with turn signal and blind spot warning indicators ⁴ and folding feature	—	P	P	S	S	S
Washer-linked intermittent windshield wiper and intermittent rear window wiper	S	—	—	—	—	—
Washer-linked variable intermittent windshield wiper and intermittent rear window wiper	—	S	S	S	S	S
Rear window defogger with timer	S	S	S	S	S	S
Power tilt/slide moonroof with sunshade	—	S	S	S	S	S
Height-adjustable power liftgate with jam protection	—	S	S	S	S	S
Privacy glass on rear side, quarter and liftgate windows	S	S	S	S	S	S
Acoustic noise-reducing front windshield	S	S	S	S	S	S
Roof rails	S	S	S	S	S	S
INTERIOR						
Air conditioning with air filter	S	—	—	—	—	—
Dual zone automatic climate control with in-cabin air filter	—	S	S	S	S	S
Backup camera ⁵ with projected path	S	S	S	S	S	S
Bird's Eye View Camera ⁵ — Perimeter Scan, overhead 360-degree view in Drive and Reverse, and curb view	—	—	—	P	P	P
Entune [®] App Suite ⁷ — includes Destination Search, Facebook Places, iHeartRadio, MovieTickets.com, OpenTable [®] , Pandora [®] and Yelp [®] ; real-time info including traffic, weather, fuel prices, sports and stocks. Access to Entune [™] services is subscription-free. See toyota.com/entune for details.	—	O	O	O	S	S
Entune [™] Audio — includes the Entune [™] Multimedia Bundle ⁹ (6.1-in. touch-screen display, AM/FM CD player, MP3/WMA playback capability, six speakers, auxiliary audio jack, USB 2.0 port ¹⁰ with iPod [®] 11 connectivity and control, advanced voice recognition, ¹² hands-free phone capability, phone book access and music streaming ¹³ via <i>Bluetooth</i> [®] 14 wireless technology) with integrated backup camera display ⁵	S	—	—	—	—	—
Entune [™] Audio Plus with Connected Navigation App ⁷ — includes the Entune [™] Multimedia Bundle ⁹ (6.1-in. high-resolution touch-screen display, AM/FM CD player, MP3/WMA playback capability, six speakers, auxiliary audio jack, USB 2.0 port ¹⁰ with iPod [®] 11 connectivity and control, advanced voice recognition, ¹² hands-free phone capability, phone book access and music streaming ¹³ via <i>Bluetooth</i> [®] 14 wireless technology), Scout [®] GPS Link App, ⁷ Siri [®] Eyes Free, ¹⁵ SiriusXM [®] Satellite Radio ¹⁶ with 3-month complimentary SiriusXM All Access trial, HD Radio, [™] 17 HD traffic and weather in major metro areas, and integrated backup camera display ⁵	O	S	S	S	—	—

S = Standard O = Optional — = Not available P = Feature is available as part of an option package.

See numbered footnotes in Disclosures section.

Features¹ (continued)

INTERIOR	LE	XLE	XLE HYBRID	SE	LIMITED	LIMITED HYBRID
Entune™ Premium Audio with Integrated Navigation ¹⁸ and App Suite ⁷ — includes the Entune™ Multimedia Bundle ⁹ (7-in. high-resolution touch-screen with split-screen display, AM/FM radio, MP3/WMA playback capability, six speakers, auxiliary audio jack, USB 2.0 port ¹⁰ with iPod ^{®11} connectivity and control, advanced voice recognition; ¹² hands-free phone capability, phone book access and music streaming ¹³ via <i>Bluetooth</i> ^{®14} wireless technology), Siri [®] Eyes Free; ¹⁵ Entune [®] App Suite ⁷ ; HD Radio; ¹⁷ HD predictive traffic and Doppler weather overlay, AM/FM cache radio, SiriusXM [®] Satellite Radio ¹⁶ with 3-month complimentary SiriusXM All Access trial, Gracenote [®] album cover art, and integrated backup camera display ⁵ Access to Entune™ services is subscription-free. See toyota.com/entune for details.	—	O	O	—	S	S
Entune™ Premium JBL [®] Audio with Integrated Navigation ¹⁸ and App Suite ⁷ — includes the Entune™ Multimedia Bundle ⁹ (7-in. high-resolution touch-screen with split-screen display, AM/FM radio, MP3/WMA playback capability, 11 JBL [®] GreenEdge™ speakers including subwoofer, auxiliary audio jack, USB 2.0 port ¹⁰ with iPod ^{®11} connectivity and control, advanced voice recognition; ¹² hands-free phone capability, phone book access and music streaming ¹³ via <i>Bluetooth</i> ^{®14} wireless technology), Siri [®] Eyes Free; ¹⁵ Entune [®] App Suite ⁷ ; HD Radio; ¹⁷ HD predictive traffic and Doppler weather overlay, AM/FM cache radio, SiriusXM [®] Satellite Radio ¹⁶ with 3-month complimentary SiriusXM All Access trial, Gracenote [®] album cover art, and integrated backup camera display ⁵ with projected path. Access to Entune™ services is subscription-free. See toyota.com/entune for details.	—	—	—	O	O	O
4.2-in. TFT Multi-Information Display (MID) with audio, customizable settings, odometer, outside temperature, clock, fuel economy and trip information, fuel economy history, current/average fuel economy, distance to empty, cruising range, average speed, trip distance with timer, compass and warning messages	—	S	—	S	S	—
4.2-in. TFT Multi-Information Display (MID) with audio, customizable settings, odometer, outside temperature, clock, fuel economy and trip information, fuel economy history, current/average fuel economy, distance to empty, cruising range, average speed, trip distance with timer, hybrid system information, EV Driving Ratio, Hybrid System Indicator, ECO Savings Record, energy monitor, compass, 4WD Drive Force distribution, and warning messages	—	—	S	—	—	S
ECO and Sport Modes	S	S	—	S	S	—
ECO, Sport and EV ¹⁹ Modes	—	—	S	—	—	S
Day/night rearview mirror	S	S	S	S	—	—
Frameless auto-dimming rearview mirror	—	—	—	—	S	S
Cruise control	S	S	S	S	S	S
Tilt/telescopic urethane steering wheel with audio, Multi-Information Display (MID), voice recognition and <i>Bluetooth</i> ^{®14} hands-free phone controls	S	—	—	—	—	—
Tilt/telescopic leather-trimmed steering wheel with audio, Multi-Information Display (MID), voice recognition and <i>Bluetooth</i> ^{®14} hands-free phone controls	—	S	S	S	S	S
Steering wheel-mounted paddle shifters	—	—	—	S	—	—
Leather-trimmed shift lever with silver accents	—	—	—	—	S	S
Sport shift lever	—	—	—	S	—	—
Sport doorsill protectors	—	—	—	S	—	—
Sport floor mats ²⁰	—	—	—	S	—	—
Fabric-trimmed 6-way adjustable driver's seat with seatback pocket; 4-way adjustable front passenger seat with seatback pocket	S	—	—	—	—	—
Fabric-trimmed 6-way adjustable driver's seat with sport bolsters and seatback pocket; 4-way adjustable front passenger seat with sport bolsters and seatback pocket	—	S	S	—	—	—
SofTex [®] -trimmed 8-way power-adjustable driver's seat with power lumbar support, sport bolsters and seatback pocket; 4-way adjustable front passenger seat with sport bolsters and seatback pocket	—	—	—	S	—	—
SofTex [®] -trimmed 8-way power-adjustable driver's seat with memory function, power lumbar support, sport bolsters and seatback pocket; 4-way adjustable front passenger seat with sport bolsters and seatback pocket	—	—	—	—	S	S
Driver and front passenger heated seats	—	—	—	S	S	S
Fabric-trimmed 60/40 split, reclining, fold-flat second-row seat with center armrest	S	S	S	—	—	—
SofTex [®] -trimmed 60/40 split, reclining, fold-flat second-row seat with center armrest	—	—	—	S	S	S
Power windows with driver auto down	S	—	—	—	—	—
Power windows with driver auto up/down with jam protection	—	S	S	S	S	S
Power door locks with shift-linked automatic lock/unlock feature	S	S	S	S	S	S
Cargo area tonneau cover	O	O	O	O	O	O
Integrated cargo net system	O	O	O	O	O	O
Remote keyless entry system	S	S	—	—	—	—
Smart Key System ²¹ with Push Button Start and remote power liftgate function	—	P	S	S	S	S
Illuminated entry system (key illumination, interior light and front personal light)	S	S	S	S	S	S

S = Standard O = Optional — = Not available P = Feature is available as part of an option package.

See numbered footnotes in Disclosures section.

Features¹ (continued)

	LE	XLE	XLE HYBRID	SE	LIMITED	LIMITED HYBRID
INTERIOR						
Center armrest with console storage box	S	S	S	S	—	—
SofTex [®] -covered sliding center armrest with console storage box	—	—	—	—	S	S
Eight cup/bottle holders	S	S	S	S	S	S
Door panel storage pockets	S	S	S	S	S	S
Three front 12V power outlets (two in front row, one in second row)	S	S	S	S	S	S
Dual sun visors with vanity mirrors	S	—	—	—	—	—
Dual sun visors with vanity mirrors and extenders	—	S	S	S	S	S
Overhead console with integrated sunglasses holder	S	S	S	S	S	S
SAFETY/CONVENIENCE						
Toyota Safety Sense [™] P (TSS-P) ²² — Pre-Collision System ²³ with Pedestrian Detection ²⁴ (PCS w/PD), Lane Departure Alert ²⁵ with Steering Assist (LDA w/SA), Auto High Beams (AHB) ²⁶ and Dynamic Radar Cruise Control (DRCC) ²⁷	—	P	P	P	S	S
STAR SAFETY SYSTEM Star Safety System [™] — includes Enhanced Vehicle Stability Control (VSC) ²⁸ Traction Control (TRAC), Anti-lock Brake System (ABS), Electronic Brake-force Distribution (EBD), Brake Assist (BA) ²⁹ and Smart Stop Technology [®] (SST) ³⁰	S	S	S	S	S	S
Driver and front passenger Advanced Airbag System; driver knee airbag; front passenger seat-cushion airbag; driver and front passenger seat-mounted side airbags; and front- and second-row Roll-sensing Side Curtain Airbags (RSCA) ³¹	S	S	S	S	S	S
Driver and front passenger Whiplash-Injury-Lessening (WIL) seats ³²	S	S	S	S	S	S
3-point seatbelts in all seating positions, with adjustable front seatbelt anchors	S	S	S	S	S	S
Driver and front passenger seatbelt pretensioners with force limiters	S	S	S	S	S	S
Driver-side Emergency Locking Retractor (ELR) and Automatic/Emergency Locking Retractor (ALR/ELR) on all passenger belts	S	S	S	S	S	S
Driver and front passenger seatbelt warning system	S	S	S	S	S	S
LATCH (Lower Anchors and Tethers for CHildren) includes lower anchors and tether anchors on outboard second-row seats	S	S	S	S	S	S
Child-protector rear door locks	S	S	S	S	S	S
Blind Spot Monitor (BSM) ⁴ and Rear Cross-Traffic Alert (RCTA) ³³	—	P	P	S	S	S
Hill Start Assist Control (HAC) ³⁴	S	S	S	S	S	S
Trailer-Sway Control (TSC) ³⁵	S	S	S	—	S	S
Tire Pressure Monitor System (TPMS) ³⁶	S	S	S	S	S	S
Engine immobilizer ³⁷	S	S	S	S	S	S
PACKAGES AND OPTIONS						
Convenience Package — Blind Spot Monitor (BSM) ⁴ and Rear Cross-Traffic Alert (RCTA) ³³ , front and rear parking sonar, ² auto on/off feature for halogen projector-beam headlights, Entune [™] Premium Audio with Integrated Navigation ¹⁸ and App Suite, ⁷ and Toyota Safety Sense [™] P (TSS-P) ²²	—	P	P	—	—	—
Advanced Technology Package — Bird's Eye View Camera ⁶ with Perimeter Scan, front and rear parking sonar, ² auto on/off feature for LED projector-beam headlights, Entune [™] Premium JBL [®] Audio with Integrated Navigation ¹⁸ and App Suite, ⁷ and Toyota Safety Sense [™] P (TSS-P) ²²	—	—	—	P	—	—
Advanced Technology Package — Bird's Eye View Camera ⁶ with Perimeter Scan and Entune [™] Premium JBL [®] Audio with Integrated Navigation ¹⁸ and App Suite ⁷	—	—	—	—	P	P
S-Code paint treatment — includes silver front and rear lower bumpers, rocker panel and overfenders with black front and rear skid plates	—	—	—	O	—	—
Entune [™] Audio Plus with Connected Navigation App ⁷ — includes the Entune [™] Multimedia Bundle ⁹ (6.1-in. high-resolution touch-screen display, AM/FM CD player, MP3/WMA playback capability, six speakers, auxiliary audio jack, USB 2.0 port ¹⁰ with iPod [®] ¹¹ connectivity and control, advanced voice recognition, ¹² hands-free phone capability, phone book access and music streaming ¹³ via <i>Bluetooth</i> [®] ¹⁴ wireless technology), Scout [®] GPS Link App, ⁵ Siri [®] Eyes Free, ¹⁵ SiriusXM [®] Satellite Radio ¹⁶ with 3-month complimentary SiriusXM All Access trial, HD traffic and weather in major metro areas, and integrated backup camera display ⁵	O	—	—	—	—	—
Entune [™] Premium Audio with Integrated Navigation ¹⁸ and App Suite ⁷ — includes the Entune [™] Multimedia Bundle ⁹ (7-in. high-resolution touch-screen with split-screen display, AM/FM radio, MP3/WMA playback capability, six speakers, auxiliary audio jack, USB 2.0 port ¹⁰ with iPod [®] ¹¹ connectivity and control, advanced voice recognition, ¹² hands-free phone capability, phone book access and music streaming ¹³ via <i>Bluetooth</i> [®] ¹⁴ wireless technology), Siri [®] Eyes Free, ¹⁵ Entune [®] App Suite, ⁷ HD Radio, ¹⁷ HD predictive traffic and Doppler weather overlay, AM/FM cache radio, SiriusXM [®] Satellite Radio ¹⁶ with 3-month complimentary SiriusXM All Access trial, Gracenote [®] album cover art, and integrated backup camera display ⁵ ; Access to Entune [™] services is subscription-free. See toyota.com/entune for details.	—	O	O	—	—	—
Entune [™] Premium JBL [®] Audio with Integrated Navigation ¹⁸ and App Suite ⁷ — includes the Entune [™] Multimedia Bundle ⁹ (7-in. high-resolution touch-screen with split-screen display, AM/FM radio, MP3/WMA playback capability, 11 JBL [®] GreenEdge [™] speakers including subwoofer, auxiliary audio jack, USB 2.0 port ¹⁰ with iPod [®] ¹¹ connectivity and control, advanced voice recognition, ¹² hands-free phone capability, phone book access and music streaming ¹³ via <i>Bluetooth</i> [®] ¹⁴ wireless technology), Siri [®] Eyes Free, ¹⁵ Entune [®] App Suite, ⁷ HD Radio, ¹⁷ HD predictive traffic and Doppler weather overlay, AM/FM cache radio, SiriusXM [®] Satellite Radio ¹⁶ with 3-month complimentary SiriusXM All Access trial, Gracenote [®] album cover art, and integrated backup camera display ⁵ with projected path. Access to Entune [™] services is subscription-free. See toyota.com/entune for details.	—	—	—	O	O	O
Integrated cargo net system	O	O	O	O	O	O
Cargo area tonneau cover	O	O	O	O	O	O

S = Standard O = Optional — = Not available P = Feature is available as part of an option package.

See numbered footnotes in Disclosures section.

Specifications

	LE	XLE	XLE HYBRID	SE	LIMITED	LIMITED HYBRID
MECHANICAL PERFORMANCE						
ENGINE						
2.5-Liter 4-Cylinder DOHC 16-Valve with Dual VVT-i, 176 hp @ 6000 rpm/172 lb.-ft. @ 4100 rpm	S	S	—	S	S	—
2.5-Liter 4-Cylinder DOHC 16-Valve with Dual VVT-i, 194 net hp	—	—	S	—	—	S
EMISSION RATING						
Ultra Low Emission Vehicle II (ULEV-II)	S	S	—	S	S	—
Super Ultra Low Emission Vehicle (SULEV) ³⁸	—	—	S	—	—	S
IGNITION						
Electronic, with Toyota Direct Ignition (TDI)	S	S	S	S	S	S
TRANSMISSION						
6-speed Electronically Controlled automatic Transmission with intelligence (ECT-i)	S	S	—	S	S	—
Electronically controlled Continuously Variable Transmission (ECVT) with sequential start mode	—	—	S	—	—	S
BODY CONSTRUCTION						
Unitized body	S	S	S	S	S	S
DRIVETRAIN						
Front-Wheel Drive (FWD)	S	S	—	S	S	—
Dynamic Torque-Control AWD	O	O	—	O	O	—
Electronic On-Demand AWD with intelligence (AWD-i)	—	—	S	—	—	S
Automatic Limited-Slip Differential (Auto LSD)	S	S	—	S	S	—
SUSPENSION						
Independent MacPherson strut front suspension with stabilizer bar and hydraulic shock absorbers; double-wishbone rear suspension with coil springs, trailing arms, stabilizer bar and hydraulic shock absorbers	S	S	S	S	S	S
STEERING						
Electric Power Steering (EPS); power-assisted rack-and-pinion	S	S	S	S	S	S
Turning circle diameter, curb to curb (ft.), 17-in. wheels	34.8	34.8	34.8	—	—	—
Turning circle diameter, curb to curb (ft.), 18-in. wheels	—	—	—	36.7	36.7	36.7
BRAKES						
Power-assisted ventilated front disc brakes, solid rear disc brakes	S	S	S	S	S	S
COLD AREA PACKAGE						
Heavy-duty battery, heavy-duty starter, heavy-duty heater and cold weather engine coolant	S	S	S	S	S	S
DIMENSIONS						
EXTERIOR DIMENSIONS (IN.)						
Overall height (without roof rails)	65.9	65.9	65.9	65.9	65.9	65.9
Overall height (with roof rails)	67.1	67.1	67.1	67.1	67.1	67.1
Overall width	72.6	72.6	72.6	72.6	72.6	72.6
Overall length	183.5	183.5	183.5	183.5	183.5	183.5
Wheelbase	104.7	104.7	104.7	104.7	104.7	104.7
Track (front/rear), 17-in. wheels	61.8/61.8	61.8/61.8	61.8/61.8	—	—	—
Track (front/rear), 18-in. wheels	—	—	—	61.4/61.4	61.4/61.4	61.4/61.4
INTERIOR DIMENSIONS, FRONT/SECOND-ROW SEATS (IN.)						
Head room without moonroof	39.8/38.9	—	—	—	—	—
Head room with moonroof	—	38.9/38.9	38.9/38.9	38.9/38.9	38.9/38.9	38.9/38.9
Shoulder room	57.3/55.4	57.3/55.4	57.3/55.4	57.3/55.4	57.3/55.4	57.3/55.4
Hip room	54.3/48.9	54.3/48.9	54.3/48.9	54.3/48.9	54.3/48.9	54.3/48.9
Leg room	42.6/37.2	42.6/37.2	42.6/37.2	42.6/37.2	42.6/37.2	42.6/37.2
Seating capacity	5	5	5	5	5	5

S = Standard O = Optional — = Not available P = Feature is available as part of an option package.

See numbered footnotes in Disclosures section.

Specifications

	LE	XLE	XLE HYBRID	SE	LIMITED	LIMITED HYBRID
DIMENSIONS						
OFF-HIGHWAY						
Approach/departure angle (degrees)	28/21	28/21	28/21	20/21	28/21	28/21
Ground clearance (in.)	6.1	6.1	7	6.1	6.1	7
WEIGHTS AND CAPACITIES						
Curb weight (lb.) (FWD/AWD)	3455/3570	3485/3605	—/3925	3520/3630	3520/3630	—/3950
Gross Vehicle Weight Rating (GVWR) (lbs.) (FWD/AWD)	4525/4640	4525/4640	—/4960	4525/4640	4525/4640	—/4960
Cargo volume (cu. ft.); ³⁹ total behind front/second-row seats	73.4/38.4	73.4/38.4	70.6/35.6	73.4/38.4	73.4/38.4	70.6/35.6
Fuel tank (gal.)	15.9	15.9	14.8	15.9	15.9	14.8
Tow capacity ⁴⁰	1500	1500	1500	—	1500	1500
TIRES						
SIZE						
P225/65R17	S	S	S	—	—	—
P235/55R18	—	—	—	S	S	S
TYPE						
All-Season steel-belted radial blackwalls	—	—	S	S	S	S
SPARE						
Temporary (P165/80R17ST)	S	S	S	S	S	S
MILEAGE ESTIMATES (city/highway/combined)⁴¹						
FWD	24/31/26	24/31/26	—	23/30/26	23/30/26	—
AWD	22/29/25	22/29/25	34/31/33	22/29/25	22/29/25	34/31/33

S = Standard O = Optional — = Not available P = Feature is available as part of an option package.

See numbered footnotes in Disclosures section.

Accessories

A wide range of Genuine Toyota Accessories is available to help make driving your RAV4 even more fun. Now your RAV4 can reflect your personal style. There's something for everyone. Some accessories may not be available in all regions of the country. For a complete list of accessories, go to toyota.com/rav4.

Alloy wheel locks
All-weather floor liners²⁰
Ashtray cup
Body side moldings
Cargo net — envelope³⁹
Cargo net — hammock
Cargo tote

Cargo tray
Carpet cargo mat
Carpet floor mats²⁰
Door edge guards
Doorsill protectors
Doorsill appliqué
Emergency assistance kit

First aid kit
Fog lights
Interior light kit
Mudguards
Paint protection film⁴⁴
Rear bumper appliqué
Rear bumper protector

Remote Engine Starter⁴⁵
Roof rail cross bars
Running boards
Security system
Shift knob
Tow hitch receiver⁴⁰



Roof rail cross bars



All-weather floor liners²⁰



Running boards



Cargo net — hammock



Rear bumper protector



Cargo tray

Some vehicles are shown with available equipment. Seatbelts should be worn at all times. For details on vehicle specifications, standard features and available equipment in your area, contact your Toyota dealer. A vehicle with particular equipment may not be available at the dealership. Ask your Toyota dealer to help locate a specifically equipped vehicle.

All information presented herein is based on data available at the time of posting, is subject to change without notice and pertains specifically to mainland U.S.A. vehicles only. Prototypes shown. Actual production vehicles may vary.

Toyota strives to build vehicles to match customer interest and thus they typically are built with popular options and option packages. Not all options/packages are available separately and some may not be available in all regions of the country. See toyota.com for information about options/packages commonly available in your area. If you would prefer a vehicle without any or with different options, contact your dealer to check for current availability or the possibility of placing a special order.



For Toyota Mobility program details, go to www.toyota.com/mobility or call the Toyota Customer Assistance Center at 1-800-331-4331

CARS BUILT FOR THE WAY YOU LIVE

At Toyota, we build cars for how you live. From building advanced safety features designed to help prevent crashes to driving cross-country to understand how we can make your driving experience better, our work starts with understanding your needs. Building cars for how you live also means thinking about tomorrow—from fuel efficiency and environmental innovations, to things beyond cars, like a bicycle that you can control with your mind. And because what we learn building cars can help improve lives in other places, we do things like help communities rebuild their homes quickly after a disaster and work with soup kitchens to help them serve more people faster. Toyota. Built for how you live. Together we are going places.

DISCLOSURES

1. Toyota strives to build vehicles to match customer interest and thus they typically are built with popular options and option packages. Not all options/packages are available separately and some may not be available in all regions of the country. See toyota.com for information about options/packages commonly available in your area. If you would prefer a vehicle without any or with different options, contact your dealer to check for current availability or the possibility of placing a special order. 2. Certain vehicle and environmental conditions may affect the ability of the sensors to detect an object. Even the shape and composition of the object can be a factor. Refer to the *Owner's Manual* for a list of conditions that could affect the system. 3. Do not rely exclusively on the blind spot mirrors. Always look over your shoulder and use your turn signal. There are limitations to the function, detection, range and clarity of the mirrors. To learn more, see your *Owner's Manual*. 4. Do not rely exclusively on the Blind Spot Monitor. Always look over your shoulder and use your turn signal. There are several limitations to the function, detection, range and clarity of the monitor. For a complete list of limitations and directions regarding use of the monitor, please see the *Owner's Manual*. 5. The backup camera does not provide a comprehensive view of the rear area of the vehicle. You should also look around outside your vehicle and use your mirrors to confirm rearward clearance. Cold weather will limit effectiveness and view may become cloudy. 6. The Bird's-Eye-View Camera does not provide a comprehensive view of the area surrounding the vehicle. You should also look around outside your vehicle and use your mirrors to confirm surrounding clearance. Cold weather will limit effectiveness and view may become cloudy. 7. Be sure to obey traffic regulations and maintain awareness of road and traffic conditions at all times. Apps/services vary by phone/carrier; functionality depends on many factors. Select apps use large amounts of data; you are responsible for charges. Apps and services subject to change. See toyota.com/entune for details. 8. PANDORA®, the PANDORA® logo, and the Pandora trade dress are trademarks or registered trademarks of Pandora Media, Inc., used with permission. 9. Entune™ is a trademark of Toyota Motor Corporation. Always drive safely, obey traffic laws and focus on the road while driving. Services vary by phone/carrier. Functionality depends on many factors. Services subject to change. For enrollment and more details, see toyota.com/entune. 10. May not be compatible with all mobile phones, MP3/WMA players and like models. 11. iPod® and iPhone® are registered trademarks of Apple Inc. All rights reserved. 12. Advanced voice recognition capabilities vary by head unit. 13. Apps/services vary by phone/carrier; functionality depends on many factors. Select apps use large amounts of data; you are responsible for charges. Apps and services subject to change. See toyota.com/entune for details. 14. Concentrating on the road should always be your first priority while driving. Do not use the hands-free phone system if it will distract you. The Bluetooth® word mark and logos are registered trademarks owned by Bluetooth SIG, Inc. and any use of such marks by Toyota is under license. A compatible Bluetooth®-enabled phone must first be paired. Phone performance depends on software, coverage and carrier. 15. Always drive safely, obey traffic laws and focus on the road while driving. Siri® is available only on iPhone® 4S or later, iPad® with Retina® display, iPad mini™ and iPod touch® (5th generation) and requires Internet access. Siri® is not available in all languages or all areas, and features vary by area. Some Siri® functionality and commands are not accessible in the vehicle. Data charges may apply. See apple.com and phone carrier for details. 16. SiriusXM services require a subscription after 3-month trial period. **Subscriptions governed by SiriusXM Customer Agreement available at www.siriusxm.com. If you decide to continue your SiriusXM service at the end of your complimentary trial, the plan you choose will automatically renew and bill at then-current rates until you call 1-866-635-2349 to cancel.** Fees and programming subject to change. Available only to those at least 18 years of age in the 48 contiguous United States and D.C. 17. Be sure to obey traffic regulations and maintain awareness of road and traffic conditions at all times. HD Radio™ Technology manufactured under license from iBiquity Digital Corporation U.S. and Foreign Patents. HD Radio™ and the HD, HD Radio, and "Arc" logos are proprietary trademarks of iBiquity Digital Corp. 18. Be sure to obey traffic regulations and maintain awareness of road and traffic conditions at all times. Availability and accuracy of the information provided by the navigation system is dependent upon many factors. Use common sense when relying on information provided. Services and programming subject to change. Services not available in every city or roadway; updates may be available at an additional cost from your dealer. See your *Navigation System Owner's Manual* for details. 19. CAUTION! When driving a hybrid vehicle, pay special attention to the area around the vehicle. Because there is little vehicle noise in electric-only mode, pedestrians, people riding bicycles or other people and vehicles in the area may not be aware of the vehicle starting off or approaching them, so take extra care while driving. 20. This floor mat was designed specifically for use in your model and model year vehicle and SHOULD NOT be used in any other vehicle. To avoid potential interference with pedal operation, each mat must be secured with fasteners. Do not install a floor mat on top of an existing floor mat. 21. The Smart Key System may interfere with some pacemakers or cardiac defibrillators. If you have one of these medical devices, please talk to your doctor to see if you should deactivate this system. 22. Please refer to the *Owner's Manual* for more information and system limitations. 23. The Pre-Collision System is designed to help reduce the crash speed and damage in certain frontal collisions only. It is not a collision-avoidance system and is not a substitute for safe and attentive driving. System effectiveness depends on many factors, such as speed, driver input and road conditions. See your *Owner's Manual* for further information. 24. The Pedestrian Detection System is designed to detect the presence of a pedestrian ahead of the vehicle, to determine if impact with the pedestrian is imminent and to help reduce impact speed. It is not a collision-avoidance system and is not a substitute for safe and attentive driving. System effectiveness depends on many factors, such as speed, size and position of pedestrians, driver input and weather, light and road conditions. Please see your *Owner's Manual* for further information. 25. Lane Departure Alert is designed to read the lane markers under certain conditions, and provide visual and audible alerts when lane departure is detected. It is not a collision-avoidance system or a substitute for safe and attentive driving. Effectiveness depends on many factors. See *Owner's Manual* for more information. 26. The automatic high beam system operates at speeds above 21 mph. Situations such as a dirty windshield, variable weather, lighting conditions and hilly terrain will limit effectiveness, requiring the driver to manually turn off. See *Owner's Manual* for details. 27. Dynamic Radar Cruise Control is designed to assist the driver and is not a substitute for safe and attentive driving practices. Please see your *Owner's Manual* for important instructions and cautions. 28. Vehicle Stability Control (VSC) is an electronic system designed to help the driver maintain vehicle control under adverse conditions. It is not a substitute for safe driving practices. Factors including speed, road conditions and driver steering input can all affect whether VSC will be effective in preventing a loss of control. Please see your *Owner's Manual* for further details. 29. Brake Assist is designed to help the driver take full advantage of the benefits of ABS. It is not a substitute for safe driving practices. Braking effectiveness also depends on proper brake-system maintenance and tire and road conditions. 30. Smart Stop Technology® operates only in the event of certain simultaneous brake and accelerator pedal applications. When engaged, the system will reduce power to help the brakes bring the vehicle to a stop. Factors including speed, road conditions and driver input can all impact stopping distance. Smart Stop Technology® is not a substitute for safe and attentive driving and does not guarantee instant stopping. Please see your *Owner's Manual* for further details. 31. All the airbag (AB) systems are Supplemental Restraint Systems. All ABs (if installed) are designed to inflate only under certain conditions and in certain types of severe collisions: frontal and knee ABs typically inflate in frontal collisions; side and side curtain ABs in side collisions; Roll-Sensing Curtain ABs at a severe tilt degree, roll or lateral G-force. In all other accidents, the ABs will not inflate. To decrease the risk of injury from an inflating AB, always wear seatbelts, sit upright in the middle of the seat as far back as possible and do not lean against the door. Do not put objects in front of an AB or around the seatback. Do not use a rearward-facing child seat in any front passenger seat. The force of an inflating AB may cause serious injury or death. See your *Owner's Manual* for further information/warnings. 32. Whiplash-Injury-Lessening front seats can help reduce the severity of whiplash injury in certain rear-end collisions. 33. Do not rely exclusively on the Rear Cross-Traffic Alert system. Always look over your shoulder and use your mirrors to confirm rear clearance. There are limitations to the function, detection, range and clarity of the system. To learn more, see your *Owner's Manual*. 34. HAC is designed to help minimize backward rolling on steep ascents. It is not a substitute for safe driving judgment and practices. Factors including grade, surface conditions and driver input can all affect whether HAC will be effective in preventing a loss of control. Please see your *Owner's Manual* for further details. 35. Trailer-Sway Control (TSC) is an electronic system designed to help the driver maintain vehicle control under adverse conditions. It is not a substitute for safe driving practices. Factors including speed, road conditions and driver steering input can all affect whether TSC will be effective in preventing a loss of control. Please see your *Owner's Manual* for further details. 36. The Toyota Tire Pressure Monitor alerts the driver when tire pressure is critically low. For optimal tire wear and performance, tire pressure should be checked regularly with a gauge; do not rely solely on the monitor system. See your *Owner's Manual* for details. 37. The engine immobilizer is a state-of-the-art anti-theft system. When you insert your key into the ignition switch or bring a Smart Key fob into the vehicle, the key transmits an electronic code to the vehicle. The engine will only start if the code in the transponder chip inside the key/fob matches the code in the vehicle's immobilizer. Because the transponder chip is embedded in the key/fob, it can be costly to replace. If you lose a key or fob, your Toyota dealer can help, or you can find a qualified independent locksmith to perform high-security key services by consulting your local Yellow Pages or by contacting www.aloa.org. 38. Meets Tier-2/Bin-3 Federal emissions standard. 39. Cargo and load capacity limited by weight and distribution. 40. Before towing, confirm your vehicle and trailer are compatible, hooked up and loaded properly and that you have any necessary additional equipment. Do not exceed any Weight Ratings and follow all instructions in your *Owner's Manual*. The maximum you can tow depends on base curb weight plus the total weight of any cargo, occupants, and added vehicle equipment. "Added vehicle equipment" includes additional standard/optional equipment and accessories added by the manufacturer, dealers, and/or vehicle owners. The only way to be certain of your vehicle's exact curb weight is to weigh your vehicle without passengers or cargo. 41. 2016 EPA-estimated mileage. Actual mileage will vary. 42. HomeLink® and the HomeLink® house icon are registered trademarks of Gentex Corporation. 43. Extra-cost color. 44. The Toyota Genuine Accessory Warranty will only apply when the installation is performed by a trained Toyota-approved installer. Please see dealer for details. 45. Available only for vehicles equipped with remote keyless entry system or Smart Key System. Use only if aware of circumstances surrounding the vehicle at time of start. Operate only when legal and safe to do so (e.g., car uncovered in open area with no people or pets inside or nearby). See usage precautions in *Owner's Manual*.