

In Section N:	Husky Hitches	Couplers	Hitch Accessories	Hitches	Tow Bars	Tow Brakes	Levels	Mirrors & Safety	Brake Controls	Towing Electrical
---------------	---------------	----------	-------------------	---------	----------	------------	--------	------------------	----------------	-------------------

DROP RECEIVERS



REGULAR RISE/DROPS

Inserts into 2" receiver hitch to lower or raise the connection height for tow bars. 2", 4" and 6" drops are 6-1/4" in length. 8" and 10" drops are 10-1/2" in length. Extended models are 14-1/2" in length.

- 30917** 2" Rise/Drop #BX88128 1
- 30918** 4" Rise/Drop #BX88129 1
- 30919** 6" Rise/Drop #BX88130 1
- 30920** 8" Rise/Drop #BX88131 1
- 30921** 10" Rise/Drop #BX88132 1
- 30936** 4" Extended Drop (4" ext.) #BX88194 1
- 30937** 6" Extended Drop (4" ext.) #BX88195 1
- 30927** Receiver Extension, extends 13-3/4" or 14-3/4" #BX88160 1
- 30935** Receiver Reducer, 2-1/2"-2" #BX88187 1
- 30948** Hi Lo 4" Receiver, 1-1/4" To 2", Black, CL IV #BX88221 1

ADJUSTABLE RISE/DROP RECEIVER

The Adjustable Drop Receiver is like our standard drop receivers only adjustable. It fits into a standard 2" receiver on the RV and is adjustable to heights of 4", 6", 8" and 10". Our Adjustable Drop Receiver is test rated for 1,000 lbs tongue and 10,000 lbs load rating.

- 30949** Adjustable Rise/Drop Receiver #BX88223 1

RECEIVER LOCKS



Locks Blue Ox tow bars to baseplate and receiver hitch to prevent theft. Prevents accidental unhitching. Chrome-plated steel keys won't bend or break. Water-tight lock heads seal out dirt and corrosion. 30914 and 30929 lock sets have matched keys.

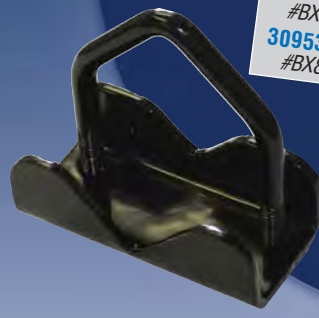
- Receiver Lock:*
- 30961** 5/8" Class III-IV #BX8858 1
 - 30962** 1/2" Class I-II #BX8859 1
 - 30914** 3-Lock Kit, (1) 5/8" and (2) 1/2" #BX88101 1
 - 30929** 4-Lock Kit, (2) 5/8" and (2) 1/2" (Shown) #BX88177 1
 - 30944** 5/8" x 4" Class III-IV, (for use with 2-1/2" Receiver) #BX88212 1



Hitch Immobilizers

Add comfort to your ride by eliminating the jerking motion common with many hitches. Eliminate the excess movement and rattling between the receiver hitch and the ball mount, tow bar or drop/rise receiver. Works on any receiver hitch and installs in seconds.

- 30928** Immobilizer I, 2" Receiver Hitch #BX88171 1
- 30950** Immobilizer II, 2" Dual U-Bolt (shown top) #BX88224 1
- 30951** Immobilizer II, 2.5" Dual U-Bolt #BX88225 1
- 30952** Immobilizer III, 2" (shown bottom) #BX88226 1
- 30953** Immobilizer III, 2.5" #BX88227 1



KARGARD™ DEFLECTOR



Polyethylene shield protects towed vehicle from road debris and folds for storage. Aluminum mounting equipment designed for quick and easy installation. All mounting hardware included.

- 30968** KarGard™ #BX8870 1

TOW BAR SERVICE PARTS (S/O)

-  84-0140, Replacement Pin Kit
-  62-3213, Quick Pin
-  229-0520, 1/2" Pin
-  84-0140, 4-Safety Cable Keeper
-  Replacement Kit 84-0102, Rubber Boot
-  Replacement Kit 84-0089, Aventa® II, Aventa® LX, Alexus®, and Aladdin® tow bar Washer
- 290-0437, Replacement Cap Plug



SPORTGUARD

Protect your boat, snowmobile, travel trailer, fifth wheel or towed vehicle from rock chips, tar, mud, slush and other road debris. Sport Guard is removable and lightweight for easy installation and storage. Save the time and money associated with unnecessary cleanup and repair caused by road debris and rock chips. Built from 10 gauge steel. Universal fit covers most vehicles. Requires a 2" receiver hitch.

- 30970** Sport Guard 70", Compact SUV #BXR3001 1
- 30971** Sport Guard 77", Full Size SUV #BXR3002 1
- 30972** Sport Guard 90", Dually Truck #BXR3003 1
- 30973** Sport Guard 96", Motorhome #BXR3004 1



Strong As An Ox™

SwayPro™ Weight Distributing Hitches

Stop sway before it begins with SwayPro™, the new standard in weight distributing hitches. Our revolutionary rotating brackets safely and securely tighten the spring bar chains, controlling sway at the source. The brackets are self contained, requiring no pins or clips to lose making hook-up, disconnect and storage a breeze. Thumb screw adjusts easily and quickly to ensure a level load. No pins and clips to lose, no external grease, so no mess or clean up. The innovative design allows you to backup without disconnecting.

Patent #6629701



1

Bolts are easily adjusted for the amount of friction and desired level of sway control.



2

The newly designed rotating bracket uses a crank to pull and tighten sway chains.

SWAYPRO™ HITCHES



3

Newly designed spring bars snap in with a quick pin! They are a nice, snug fit and easy to remove!

All Blue Ox® SwayPro™ weight distributing hitches have a three year warranty!

- 30981** Hitch SwayPro, 550-lb.*
#BXW0550 1
- 30982** Hitch SwayPro, 750-lb.*
#BXW0750 1
- 30983** Hitch SwayPro, 1000-lb.*
#BXW1000 1
- 30984** Hitch SwayPro, 1500-lb.*
#BXW1500 1

* Hitch ball sold separately.



Strong As An Ox™

BLUE OX SWAYPRO HITCHES

TOWING & SAFETY

N

In Section N: Husky Hitches Couplers Hitch Accessories Hitches Tow Bars Tow Brakes Levels Mirrors & Safety Brake Controls Towing Electrical

SWAYPRO™ LT



S/OBXW500, SwayPro™ LT, 500 lb Tongue Weight Capacity
 S/OBXW800, SwayPro™ LT, 800 lb Tongue Weight Capacity
 S/O BXW1100, SwayPro™ LT, 1,100 lb Tongue Weight Capacity
 S/O BXW1400, SwayPro™ LT, 1,400 lb Tongue Weight Capacity

HEAD ASSEMBLY KIT



No more clumsy washers or repeated adjustments! SwayPro™ offers a unique thumb screw adjustment that angles the head perfectly to ensure your load is level in less than half the time of other sway control units. Towing capacity settings are pre-set but are easily adjustable.

S/O 84-0124, Fits All models

SPRING BAR KITS



If you switch trailers, don't buy a new hitch, just buy the bars. All head assemblies for SwayPro™ models are the same, but interchangeable spring bars allow an increase or decrease in capacity for proper towing. Beveled ends lock into place with a spring pin without grease for clean use and storage.

S/O BXW4005, 550 lb Spring Bar Kit (Shown)
 S/O BXW4006, 750 lb Spring Bar Kit
 S/O BXW4007, 1,000 lb Spring Bar Kit
 S/O BXW4008, 1,500 lb Spring Bar Kit

ROTATING LATCH KIT

For use on all SwayPro™ weight distributing hitch models.

S/O 84-0166, Rotating Latch Kit, Clamp style
 S/O 84-0167, Rotating Latch Kit, Bolt-on style

LIGHT BAR



Fits in a standard receiver of the towed vehicle to provide the lights required for towing. Shown folded in storage position.

30940 Light Bar #BX88199 1

NEW!

SwayPro™ LT



Now your favorite weight distributing hitch is available for lighter weight trailers! The NEW SwayPro™ LT is the newest hitch from Blue Ox®. The SwayPro™ LT prevents sagging of the tow vehicle trailer hook up creating a safe method of trailer towing. With built-in sway control, the SwayPro™ LT eliminates user adjustments making it the easiest hitch to install! New rotational chain brackets are easy to install and use. The rotating chain design installs below the top of the frame giving it clearance for fuel tanks and any other obstructions mounted on the trailer frame. It is specially designed for lighter weight trailers and the interchangeable sway bars are made for 500, 800, 1,100 and 1,400 pound trailers.

ROTATING BRACKET KIT



easiest sway control devices to use.
 S/O 84-0125, Fits All Models

This one-of-a-kind rotating bracket offers an automatic locking design that eliminates pins and clips. Heavy-duty so it will not bend or distort when tightening the tongue bracket. Quick release lever also makes this one of the



TRAILER BALLS

Solid steel, plated and heat treated for extra strength, these trailer balls allow for extra clearance when using a 6" or higher frame widths. For use with SwayPro™ or other weight distributing hitches. Rated at 25,000 lb gross trailer weight.

30945 2-5/16" x 1-1/4" x 1" Rise #BX88213 1

30946 2-5/16" x 1-1/4" x 2" Rise #BX88214 1

S/O BX88234, 2-5/16" x 1-1/4" x 2-1/4"

HITCH SHANKS



Use these 2" x 2" adjustable bars in the raised or dropped position. Long hitch bars provide the extra length for bumper clearance and hold a gross load rating to 15,000 lb and a tongue load rating of 1,500 lb.

S/O BXW4000, 6 Hole x 11"
 S/O BXW4001, 6 Hole x 14" (Shown)
 S/O BXW4002, 8 Hole x 11"
 S/O BXW4003, 8 Hole x 14"
 S/O BXW4004, 10 hole x 11"



Strong As An Ox™

**30,000 lb.
GTW
Capacity**



Dodge Hitch

Your truck is a big part of your life, and so is your gooseneck trailer. That's why your hitch should be hefty enough for heavy-duty towing yet out of the way when the need arises to use the entire truck bed! The Blue Ox® gooseneck hitch has been a success in agricultural and horse trailer markets. **All Blue Ox goosenecks come with a three year warranty. See fit guide for more information.**

- No lever to release the ball
- Increased turning radius
- Cleaner look and installation
- Simple to use
- Optimal hitch location to properly locate the load on the truck's frame and suspension.
- Self locking ball
- One-person installation that takes less than two hours!



Chevy/GMC short bed/dually hitch

CHEVY / GMC

30992 99-07 2500 Long Bed Dually #DH1301 ₁

30992 99-07 2500 Short Bed (Includes HD) #DH1301 ₁

30992 99-07 3500 Short Bed (Single Wheel) #DH1301 ₁

30992 99-07 3500 Short Bed (Includes HD & Dually) #DH1301 ₁

30993 99-07 2500 Long Bed (Includes HD, No Dually) #DH1302 ₁

30993 99-07 3500 Long Bed (Includes HD, No Dually) #DH1302 ₁

30995 88-98 2500 Long Bed #DH1303 ₁

30995 88-98 2500 Short Bed #DH1303 ₁

30995 99-03 3500 Classic Body Style #DH1303 ₁

S/O DH1304 07N-'10, 2500 Short Bed (Includes Dually)

S/O DH1304 08-'10, 3500 Short Bed (Includes Dually)

S/O DH1305 08-'10, 2500 Long Bed (Includes Dually)

S/O DH1305 08-'10, 3500 Long Bed (Includes HD)



Strong As An Ox™

BLUE OX GOOSENECK HITCHES

TOWING & SAFETY

N

In Section N:	Husky Hitches	Couplers	Hitch Accessories	Hitches	Tow Bars	Tow Brakes	Levels	Mirrors & Safety	Brake Controls	Towing Electrical
---------------	---------------	----------	-------------------	---------	----------	------------	--------	------------------	----------------	-------------------



Now you need it. Now you don't. That's our philosophy. The Blue Ox® gooseneck hitch design has been successful thanks to clean installation and the trustworthy inverted ball design. These goosenecks bolt directly to the truck frame and use existing bolts and holes whenever possible. It only requires one four-inch hole to be drilled into the truck bed for the ball cylinder placement. Our inverted ball has a spring-loaded locking mechanism that secures the ball in place — without the use of underbed levers!

**NO
underbed
levers!**



1
The inverted ball has a spring-loaded locking mechanism to secure the ball in place. Unlatch the ball by pushing the safety thumb lock to release then rotate and remove the ball.



2
Invert the ball and place back into the socket, maximizing precious truck bed space.

The ball is quick and easy to remove! Just simply push the safety thumb lock to release it, then rotate and pull.

Invert the ball and place it back into the socket to maximize your precious truck bed space.

Isn't that easy? Yes... just like it should be.



DODGE

- 30985** 94-02 1500 Long Bed #DH1101 1
- 30985** 94-02 1500 Short Bed #DH1101 1
- 30985** 94-02 2500 Long Bed #DH1101 1
- 30985** 94-02 2500 Short Bed #DH1101 1
- 30985** 94-02 3500 Long Bed #DH1101 1
- 30985** 94-02 3500 Short Bed #DH1101 1

- 30986** 03-08 1500 Mega Cab Long Bed (Includes HD) #DH1102 1
- 30986** 03-08 1500 Mega Cab Short Bed (Includes HD) #DH1102 1
- 30986** 03-10 2500 Long Bed (Includes HD & Mega Cab) #DH1102 1
- 30986** 03-10 2500 Short Bed (Includes HD & Mega Cab) #DH1102 1
- 30986** 03-10 3500 Long Bed (Includes HD & Mega Cab) #DH1102 1
- 30986** 03-10 3500 Short Bed (Includes HD & Mega Cab) #DH1102 1

- 30987** 03-07 1500 Long Bed (Not Mega Cab, Not HD) #DH1103 1
- 30987** 03-07 1500 Short Bed (Not Mega Cab, Not HD) #DH1103 1

S/O DH1104 '08 1500 Long Bed (Not Mega Cab, Not HD)
S/O DH1104 '08 1500 Short Bed (Not Mega Cab, Not HD)

FORD

- 30988** 99-07 F-250 Long Bed (Includes Super Duty) #DH1201 1
- 30988** 99-07 F-250 Short Bed (Includes Super Duty) #DH1201 1
- 30988** 99-07 F-350 Long Bed (Includes Super Duty) #DH1201 1
- 30988** 99-07 F-350 Short Bed (Includes Super Duty) #DH1201 1

- 30991** 93-97 F-250 Long Bed #DH1202 1
- 30991** 93-97 F-250 Short Bed #DH1202 1
- 30991** 93-97 F-350 Long Bed #DH1202 1
- 30991** 93-97 F-350 Short Bed #DH1202 1

S/O DH1203 08-'10, F-250 Long Bed (Includes Super Duty)
S/O DH1203 08-'10, F-250 Short Bed (Includes Super Duty)
S/O DH1203 08-'10, F-350 Long Bed (Includes Super Duty)
S/O DH1203 08-'09, F-350 Short Bed (Includes Super Duty)
S/O DH1203 08-'09, F-450 Long Bed (Includes Super Duty)
S/O DH1203 08-'09, F-450 Short Bed (Includes Super Duty)

TOYOTA

S/O DH1400 08 Toyota Tundra

**TruCenter
Steering Controls**

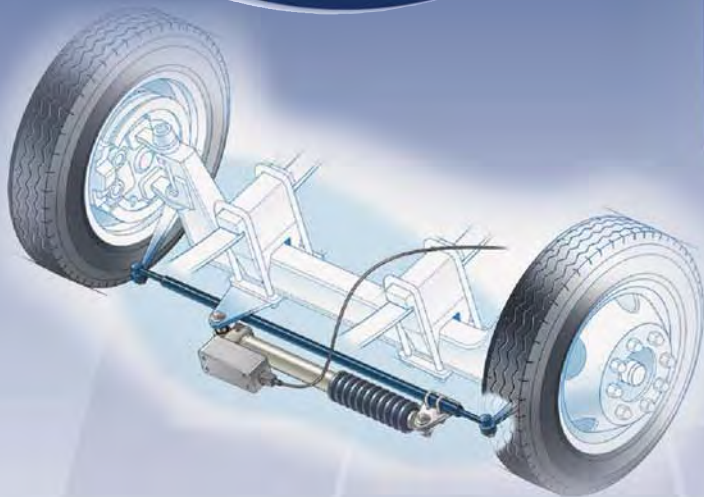


The TruCenter™ from Blue Ox® works hard to keep you straight. Few driving experiences are as unnerving as trying to stay in your lane when there's a buffeting crosswind or uneven pavement. TruCenter™ works like a horizontally-mounted shock absorber. Just push and hold the button, adjust the wheel and let go of the button. The system applies the force needed to keep your motorhome on course. With this system, driving becomes fun once again.

- 30998** TruCenter 160 lb, 35" #TC35160 ¹
- 30999** TruCenter 270 lb, 35" #TC35270 ¹



- Allows driver to maintain control in a front tire blow-out and safely pull over
- Control your steering with ease
- Less front end component and general tire wear and tear
- Saves on general vehicle maintenance repairs and costs
- Easier to drive with less fatigue
- Push button adjustment
- Durable, double-sealed gas spring cylinder
- Quick and simple bolt-on installation
- Transferable from coach to coach
- Easy installation
- Custom designed bracket



**The Blue Ox®
Trucenter™
steering control
system has a
one year
warranty!**



BLUE OX TRACK BARS

In Section N:	Husky Hitches	Couplers	Hitch Accessories	Hitches	Tow Bars	Tow Brakes	Levels	Mirrors & Safety	Brake Controls	Towing Electrical
---------------	---------------	----------	-------------------	---------	----------	------------	--------	------------------	----------------	-------------------

The springs of gas motorhomes often sway from side to side, such as when passing a large vehicle. This is especially true of late-model coaches with long parabolic springs and an extended rear overhang. Situated between the axle and the frame, TigerTrak™ allows unhindered up-and-down movement of the springs while virtually eliminating tail wag. So you'll find your coach easier to drive and the ride more enjoyable for everyone.



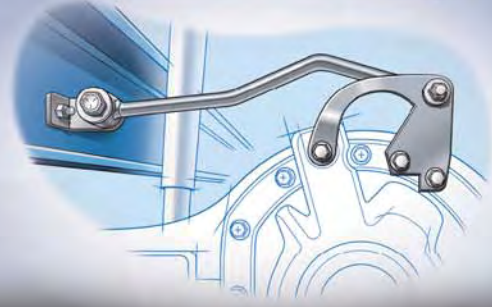
31000 thru '05 Chevrolet P-32 MHC Rear Bar Kit #TT2300 1
31001 thru '05 Chevrolet P-30 Rear Bar Kit #TT2301 1
 S/O thru '10, Chevrolet/GMC G-30 Rear Bar Kit #TT2308

31005 thru '10, Ford F53 (14,000-18,000 GVW Chassis) Rear Bar Kit #TT2400 1
31006 thru '10, Ford F53 (20,000-22,000 GVW Chassis) Rear Bar Kit #TT2401 1
31007 thru '10, Ford E-350 (C Chassis) Rear Bar Kit #TT2402 1
31007 thru '04, Ford E-450 (C Chassis) Rear Bar Kit #TT2402 1
 S/O thru '10, Ford F53 (V10) Front Bar Kit #TT2403
 S/O thru '10, Ford F53 (V-8) Front Bar Kit #TT2404
31008 '05-'10, Ford E-450 (C Chassis) Rear Bar Kit #TT2450 1

31009 thru '10, Kodiak 4500-5500 Chassis (No Factory Air Ride) Rear Bar Kit #TT2500 1
31010 thru '10, Kodiak 4500-5500 Chassis (No Factory Air Ride) Front Bar Kit #TT2501 1

31000 thru '08, Workhorse P32 Rear Bar Kit #TT2300 1
31002 thru '10, Workhorse W20, W21, W22, W24 Rear Bar Kit #TT2302 1
31003 thru '10, Workhorse W16, W18, W20-W22 Front Bar Kit #TT2304 1
31004 thru '10, Workhorse W16, W18 Rear Bar Kit #TT2306 1
 S/O thru '05, GMC G-30 Rear Bar Kit #TT2308

- Stabilize your motorhome
- Designed to keep axles in line with the frame
- Controls side-to-side shifting
- Constructed of high-strength alloy steel
- Easy installation, no drilling needed



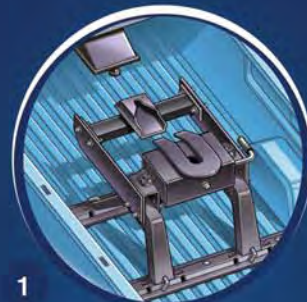
6 = Std. Carton Qty.

**BedSaver™
Fifth Wheel Protection**

Slip happens. It's not a matter of if, but a matter of when. Just think about it. You get ready for a well-planned, well-deserved trip. You check your truck tires, get a tune-up and pack the first-aid kit because you just never know what can happen. Fifth wheel owners need one more item to complete their safety check — a Blue Ox® BedSaver™. Dropping your fifth wheel is more common and dangerous than you might think. With BedSaver™, you can put those worries to rest. The BedSaver™ works for your towing truck by literally "catching" the kingpin if it slips off of the coupler. **Blue Ox® BedSaver™ comes with a one year warranty. See fit guide for more information.**



HOW IT WORKS



1
Fifth wheel hitch with BedSaver™ in place.



2
Fifth wheel kingpin fails to seat properly and slips off the hitch.



3
Fifth wheel kingpin slips safely and securely into the BedSaver™, protecting your truck bed!

THE FACTS

- Simple installation — no drilling or hitch modifications needed.
- No moving parts to wear out or break.
- Minimal maintenance after installation.
- The hitch operates normally.



Blue Ox® BedSaver™ shown in yellow for display purposes only.

S/O BXR4700 B & W Companion (up to 18K)
S/O BXR4200 Brophy 15.5K
S/O BXR4800 Curt 20K

30974 For Reese/Draw-Tite 14K-15K-16K
#BXR4100 **1**

S/O BXR4105 Drawtite 18K & 25K Signature Series

30975 For Reese/Draw-Tite 14K-15K-16K Sliders
#BXR4101 **1**

S/O BXR4106 Drawtite 15K Slider with Moryde Pin Box

30976 For Reese/Draw-Tite 18K-20K-22K
#BXR4102 **1**

S/O BXR4300 Hidden Hitch 18K

S/O BXR4301 Hidden Hitch 18K with Moryde Pin Box

S/O BXR4600 Hijacker 16K & 18K Hitches

30978 For Husky 16K & 16K EZ Roller #BXR4400 **1**

S/O BXR4401 Husky 15K

S/O BXR4403 Husky 20K

S/O BXR4402 Husky 24K

S/O BXR4404 Husky 25K HD

S/O BXR4200 Proeagle 15K

S/O BXR4501 PullRite 14K Super Glide

S/O BXR4500 PullRite 15.5K & 16K

S/O BXR4501 PullRite 16K Super Glide

S/O BXR4502 PullRite 25.5K

S/O BXR4200 RBW Lil' Rocker

S/O BXR4202 RBW BHS 85-7

S/O BXR4200 Robin 15.5K Hitch

S/O BXR4900 Robin 16K Hitch

30974 For Reese 14K, 15K Classic & Select Hitches, 16K Classic
#BXR4100 **1**

30977 For Reese 16K Select #BXR4103 **1**

S/O BXR4105 Drawtite 18K & 25K Signature Series

30975 For Reese 14K-15K-16K Sliders
#BXR4101 **1**

30976 For Reese 18K, 20K & 22K Hitches (No 18K Select Plus)
#BXR4102 **1**

30977 For Reese 18K Select Plus, Pro Series 15K & 18K
#BXR4103 **1**

S/O BXR4104 Reese Pro Series 15K Sliders

S/O BXR4200 Tuff Tow 15.5K

30978 For Valley 16K & 16K Sliders #BXR4400 **1**

S/O BXR4401 Valley 15K

S/O BXR4402 Valley 24K

In Section N:	Husky Hitches	Couplers	Hitch Accessories	Hitches	Tow Bars	Tow Brakes	Levels	Mirrors & Safety	Brake Controls	Towing Electrical
---------------	---------------	----------	-------------------	---------	----------	------------	--------	------------------	----------------	-------------------

SPORTLOADER™



The Blue Ox® SportLoader™ provides a simple and effective method of loading and hauling a motorcycle while also providing the ability to tow a trailer, camper, or travel trailer.

- Motorcycle rides less than one inch above bed of truck
- Removable ramps store in bed of truck
- Extension available for over height pickup trucks
- One person loading and unloading

Pivot tube required. See Blue Ox® Application Guide for details. (292-1843)

S/O SC3000, SportLoader™, 8', Long Box
S/O SC3001, SportLoader™, 6', Short Box

SPORTLOADER™ ACCESSORIES

S/O SC9010, SportLoader™ Mainframe 18" Extension (use SC3000/01)
S/O SC9012, SportLoader™ Support Stand
S/O SC9026, Ramp Extension (SC3000/01)

SPORTLOADER™ GOLF CARTS/ATV KITS

S/O SC9028, Golf cart and ATV adapters (use with SC3000/01)
S/O SC9029, Golf Cart Dolly bolt on wheel kit 43" tire width (use with SC9028)
S/O SC9030, Golf Cart Dolly bolt on wheel kit 49" tire width (use with SC9028)

MOTORCYCLE CARRIERS



Motorcycle Carrier I mounts in existing receiver of motorhome. Additional 1-1/2" receivers are included will need to be mounted to the frame of the coach; some welding may be

required.

- Loading ramp included
- Can be stored when not in use
- Tie down mounts built in
- Flat tow up to 5,000 lb (no trailers)
- 1,000 lb weight capacity

S/O SC2000, Motorcycle Carrier I

MOTORCYCLE CARRIERS CONTINUED



Motorcycle Carrier II mounts in receiver of pickup or SUV and is simple to install and remove.

- Loading ramp included
- Can be stored when not in use
- Easy assembly and storage
- Uses existing receiver
- 600 lb. weight capacity

S/O SC2001, Motorcycle Carrier II

SPORTCARRIER™



- 48" x 84" steel deck can carry a motorcycle, golf cart or ATV
- Removable tire stop
- Flat tow up to 5,000 lb (no trailers)
- Loads curb-side or street-side
- Tie-down locations built into deck
- 1,000 lb weight capacity
- Requires 3-receiver hitch (not incl.) Ramps sold separately.

S/O SC2100, SportCarrier™

SPORTCARRIER™ ACCESSORIES

S/O SC9001, Tire Support 5-1/2"
S/O SC9002, 6-Wire, 12' Coiled Elec. Cbl.
S/O SC9003, Tire Support 3-1/2"
S/O SC9004, Tire Support 6-1/2"
S/O SC9005, Kit, Lights, Bolt-on
S/O SC9006, Kit, Bumper Pads
S/O SC9007, Motorcycle Rear Tire Guide
S/O SC9008, Bicycle Holder
S/O SC9009, Ramp Bracket Kit, Bumper Pads
S/O SC9011, Tie Down Ratchet
S/O SC9016, Bike Holder, Sport Carrier, Small
S/O SC9056, Adjustable Tire Support Mount Bracket

SPORTCARRIERS™ II



- 48" x 84" steel deck can carry a motorcycle, golf cart or ATV
- Removable tire stop
- Loads curb-side or street-side
- Tie-down locations built into deck
- 1,000 lb weight capacity
- Requires 3-receiver hitch (not incl.)
- Ramps sold separately.

S/O SC2102, SportCarrier™ II

SPORTLIFT™ III



- One person loading and unloading at ground level
- 1,000 lb weight capacity
- Tie-down locations built-in
- Electric winch
- Requires 3-receiver hitch (not incl.)
- Flat tow up to 5,000 lbs (no trailers)

S/O SC4200, SportLift™ III
S/O SC9000, Receiver Hitch, OverBilt

Blue Ox® carriers.
When your ride needs a ride.



Strong As An Ox™

ONE YEAR WARRANTY ON ALL BLUE OX® CARRIERS!
NOTE: Please verify motorhome chassis capacity rating before purchase, as some coaches do not support carriers or SportLifts™.



VICTORY SERIES

Most Advanced Non-Binding Technology in the Towing World.



Commander



Patent# 6502847, 6612604, 6764092 & Patent Pending



*Shown with optional Silent Hitch Pin.



Excali-Bar II



Patent# 6502847, 6612604, 6764092 & Patent Pending



*Shown with optional Silent Hitch Pin.



Patent# 6502847, 6612604, 6764092 & Patent Pending



*Shown with optional Silent Hitch Pin.



COMMANDER® TOW BAR

The most economical RV mounted Tow Bar on the market, offering more features than anything else in its class. It weighs only 41 lbs. Towing capacity: 6,000 lbs. Overall length of leg: 36". Size folded for storage: 5" x 10" x 25". Safety cables included.

31676 Commander Tow Bar
#9511010 **1**



EXCALI-BAR II® TOW BAR

A Tow Bar that is now 12 lbs. lighter than its predecessor at only 46 lbs. Excali-Bar: A name proven in the RV industry. Towing capacity: 10,500 lbs. Overall length of leg: 36". Size folded for storage: 5" x 10" x 25". Safety cables included.

31675 Excali-Bar II Tow Bar
#9511009 **1**



DOMINATOR® TOW BAR

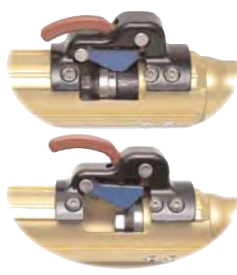
Lightweight but strong, DOMINATOR® has been tested and proven reliable. It weighs only 30 lbs. The DOMINATOR® is built primarily of marine and aircraft grade aluminum alloy, but steel is used in critical areas to minimize wear. Towing capacity: 7500 lbs. Safety cables included.

31386 Dominator Tow Bar
#9511008 **1**



Victory Series Tow Bars Feature:

- Modular design
- Independent arms for easy hook-up
- Ergonomic friendly adjustable mounting clips
- Raise or drop male receiver (standard)
- Stores in multiple positions
- Adjustable towing angle
- Includes safety cables
- Easy trigger release
- Self supporting



Independent Arms



Easy Trigger Release

In Section N:	Husky Hitches	Couplers	Hitch Accessories	Hitches	Tow Bars	Tow Brakes	Levels	Mirrors & Safety	Brake Controls	Towing Electrical
---------------	---------------	----------	-------------------	---------	----------	------------	--------	------------------	----------------	-------------------

Baseplates...

All **Demco**

Baseplates are FEA tested for **STRENGTH** and **DURABILITY**

Unless you're looking for it, you probably won't see it.

Baseplate Installation on a



Chev Equinox



Ford Fusion



Kia Soul



For current baseplate fits please visit www.towdemco.com

TOW BAR COVER

Vinyl storage cover keeps tow bar clean and neat when not in use. Demco Vinyl Storage Cover with Screen Printed Logo.

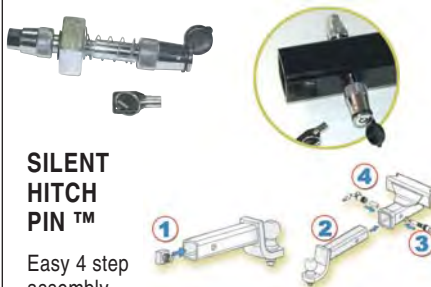
30637 Demco Tow Bar Cover #9523042 1



DEMCO SENTRY

Attaches to the connecting ears of Demco tow bar to shield your towed vehicle from loose gravel, road tar and other road debris. Resilient, high density polyethylene deflector retains its shape and takes destructive abuse. Three locking parts easily install or remove without tools. Fringed bottom edge minimizes damage to deflector from curbs and extreme dips and bumps.

39360 Sentry™ Deflector for Towed Vehicle #9523025 1



SILENT HITCH PIN™

Easy 4 step assembly. Secure tow bar to baseplate with these steel locking pins. Silent hitch pin tightens tow bar to receiver hitch to reduce or eliminate rattling and clunking noises when towing.

30660 Single Silent Hitch Pin #5846 1

SAFETY CABLES

1-Pair Coiled Safety Cables with Hooks & Vinyl Coating (Standard).

37421 Safety Cables w/Hooks #9523003 1

Quick Pins, Card of 2.

30641 Quick Pin Set #9523045 1



30639 Three Locking Pin Kit #9523044 1

DROP RECEIVER HITCHES



39694 6" Receiver Hitch #9523038 1

39695 3" Receiver Hitch #9523039 1

4-Way Lighting Cable (Two 4-pin receptacles included).



30662 4-Way Lighting Cable #9523004 1

HUSKY FOLDING TOW BAR WITH ADJUSTABLE ARMS

• Use for towing light vehicles behind cars, trucks and motorhomes. • 5000 lb.‡ Gross Towing Capacity. The Husky FTB features a streamlined appearance and heavy-duty construction and adjustable arms. You'll appreciate its light weight, easy installation and use, and how easily it folds for compact storage. Tow bar mounting brackets bolt securely to the vehicle bumper or frame attachment points (some vehicles will require a custom bracket due to bumper design). Connects and disconnects easily from the bumper mounting brackets by two pull pins. Its safety chain loop attachments placed near the coupler and mounting bracket positions make for easy hook-up. The quick-latch coupler fits 2-inch trailer balls. The Husky FTB includes complete easy-to-follow installation instructions.



HUSKY DELUXE MAGNETIC TOWING LIGHT KIT

Made for RV, commercial and agricultural use. Includes heavy duty 4-way zinc plug and socket, wiring instructions, plus a blow molded protective storage and carrying case. Meets all DOT requirements. 30' shielded cable. Features commercial grade magnets with vinyl protective covers. No need to tap into towed vehicle's electrical system. Can be used on multiple vehicles.

11314 Deluxe Tow Light Kit #11314 [6](#)

Description	Part #	Price
Tow Bar with Brackets & Hardware, 5000 lb.‡ capacity	30508	

‡Note: weight rating is limited to Vehicle Tow Rating; see Vehicle owners Manual.

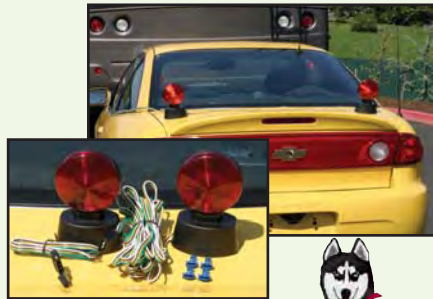


SMART SOLUTIONS 18" ROCK SOLID FOR TRUCKS

The new Rock Solid for trucks was designed in response to overwhelming consumer demand. This new item is 18" in length (as opposed to the other model #11, CDS#79648, which is only 14"); this is a huge objection to the other model.

The other major innovation is the new 4" lift bracket that we now include in each kit. This lift bracket allows you to raise the guard up (if necessary) to eliminate any gap between the truck bumper and the Rock Solid.

87170 18" Rock Solid For Trucks #01868 [5](#)



HUSKY MAGNETIC TOWING LIGHTS



The Husky towing lights have over 35% more holding power and larger magnets than competitive models. They include a plug cover to keep dirt and corrosion out. The magnets come with an e-coated magnet cap to eliminate rust and protect the vehicle from scratches. Wired to industry standard 4-way flat connector. Comes in a clam shell that can be used as a storage container. Includes tow vehicle hook-up plug and long 20' cord. Useful for RV, agricultural, industrial, marine and automotive needs. Complete with instructions.

17929 Magnetic Towing Lights #17929 [10](#)



HUSKY LED MAGNETIC TOWING LIGHTS

Consumes 85% less power than traditional incandescent lights and has an average life of 100,000 hours!

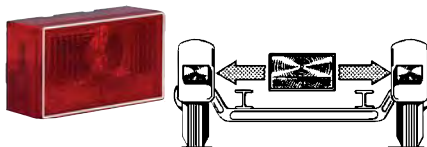
LED Magnetic lights are SAE approved. LED lights consume 85% less power than incandescent versions, and have a service life rated at 100,000 hours. The shock and vibration-resistant design make them less susceptible to damage from dropping and vibration. The head assembly is encapsulated in resin for long-lasting, waterproof, trouble-free use. Husky towing lights have over 35% more holding power and larger magnets than competitive models. They include a plug cover to keep dirt and corrosion out. The magnets come with an e-coated magnet cap to eliminate rust and protect the vehicle from scratches. Wired to industry standard 4-way flat connector. Comes in a clam shell that can be used as a storage container. Includes tow vehicle hook-up plug and long 20' cord. Useful for RV, agricultural, industrial, marine and automotive needs. Complete with instructions.

13818 LED Tow Lights #13818 [1](#)

DRY LAUNCH LIGHTS FOR KAR KADDY

Fits 8/88 and up (Series 27692). 3 1/2" x 6" x 2", 7-function. Reversible left/right, submersible.

753313 Dry Launch RH & LH Tail Light #SP7RBW-LR13 [20](#)



BRAKEBUDDY TOWBRAKE

In Section N:	Husky Hitches	Couplers	Hitch Accessories	Hitches	Tow Bars	Tow Brakes	Levels	Mirrors & Safety	Brake Controls	Towing Electrical
---------------	---------------	----------	-------------------	---------	----------	------------	--------	------------------	----------------	-------------------



BRAKEBUDDY® BOOST SERIES*

FOR TOWED VEHICLES WITH FULL TIME ELECTRICAL BRAKES

Full Time Electric Brakes is a new braking technology found on a small, but growing number of towed vehicles. This type of braking does not rely on vacuum, so the Boost Series was created.

Vehicles with full time electric brakes:

- Full time electric brakes do NOT use vacuum
- Use electricity to power vehicle brakes
- Brakes remain fully charged whether vehicle is running or not.



NEW!



31673



31674

Visit WWW.BRAKEBUDDY.COM or call 1-800-470-2287 for a list of vehicles with this new technology.

Models/Features	Vantage Select CDS#30738	NEW! Vantage Select Boost CDS#31674	Digital Classic CDS#39500	NEW! Digital Classic Boost CDS#31673
Break-Away System Included	✓	✓	✓	✓
Braking Alert Notification	✓	✓	✓	✓
Full Braking Technology	✓	✓	✓	✓
Proportional Braking Technology	✓	✓		
1-Touch Start Up Button	✓	✓		
Easily Adjust Braking Method Or Sensitivity Settings From The Coach	✓	✓		
For Vehicles With Full Time Electric Brakes		✓		✓

31673 BrakeBuddy® Classic Boost #39498 1

31674 BrakeBuddy® Vantage Select Boost #39509 1

Vehicles with traditional vacuum brakes:

- Vacuum pump maintains braking power while vehicle is running
- When turned off, the vacuum can be bled from system, creating a "dead pedal".

Vantage Select (CDS#30738) and Digital Classic (CDS#39500) designed for these systems.

*Specifications for the BOOST Series are the same as the Classic or Vantage Select.



Waterproof LED Trailer Light Kit



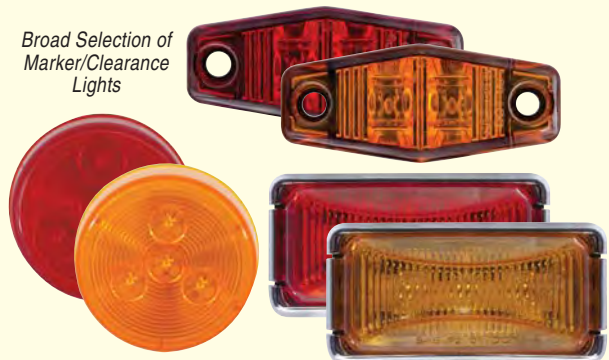
SEE THE COMPLETE SERIES OF HUSKY TRAILER LIGHTS IN SECTION E!



Incandescent Pre-Wired Fender Light Assembly



Broad Selection of Marker/Clearance Lights



Broad Selection of Incandescent Truck & Trailer Lighting



... and more!



BrakeBuddy® – Absolutely the best-selling and easiest-to-use auxiliary brake system available

States and provinces have passed laws requiring auxiliary braking systems for motorhomes towing a vehicle. Until 1996, the only option came in an expensive and invasive braking system. BrakeBuddy broke the mold and provided RVers with a powerful, yet easy to use auxiliary braking system. One that is lightweight and can be easily transferred between vehicles. As the inventor and leader of the brake-in-the-box category, BrakeBuddy is the most trusted brand with more units sold than all other systems combined.

Quality: Each unit is 100% tested before shipment and backed by a industry's best three-year warranty.

Performance: BrakeBuddy provides the right braking force when you need it. Its advanced terrain sensing prevents false activation. A wireless diagnostic Alert System notifies the driver when braking is occurring and if a break away occurs. Break-Away System is included to ensure roadway safety. In the event the towed vehicle breaks away from the motorhome the BrakeBuddy applies the brake bringing the towed vehicle to a controlled stop.

Convenience: Best of all, BrakeBuddy is easy to use, lightweight, and easy to transfer between vehicles.



Why do you need a BrakeBuddy?

- Reduces overall stopping distance by 50% in a panic stop.
- Keeps you safe and legal wherever you travel.
- BrakeBuddy Break-Away System brings vehicle to a complete stop when towed vehicle detaches from Motorhome.
- Prevents excessive wear on your Motorhome brakes and will not void your chassis warranty.
- More units sold than all other units combined with Industry's Best Warranty

BrakeBuddy Classic™

The original brake-in-the-box system. BrakeBuddy® Classic is the industry standard for dependability. It has more miles of experience than others combined.

39500 Classic Complete System

Includes: 39302 Alert System, 39303 Break-Away System.
Optional Accessories: Convenient Storage Bag, 12-Volt Battery Direct Kit.



Classic™ Specifications Size:

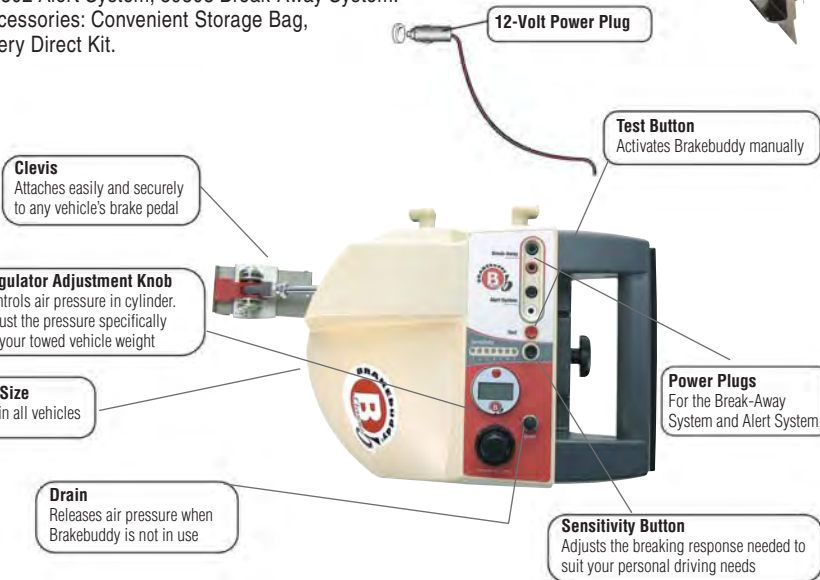
9" x 11" x 14"
Weight: 12 lbs
Power Supply: 12 volts, amperage draw of 11.3 amps.
Warranty: A full 3-year limited warranty on parts and labor; 30-day full money back guarantee. 2-year extended warranty also available (special order).

All specifications are subject to change without notice.



39302 Alert System

Gives you peace of mind that the Brakebuddy is doing its job, and alerts the driver if a break-away situation has occurred. These handy remote trans mitter systems are included in the BrakeBuddy Complete Systems, or sold individually.



39303 Break-Away System

In the event the towed vehicle separates, BrakeBuddy automatically applies the brakes, bringing the towed vehicle to a controlled stop. (Included in 39500 Classic Complete System).



30062 Replacement Clevis

In Section N:	Husky Hitches	Couplers	Hitch Accessories	Hitches	Tow Bars	Tow Brakes	Levels	Mirrors & Safety	Brake Controls	Towing Electrical
---------------	---------------	----------	-------------------	---------	----------	------------	--------	------------------	----------------	-------------------

BrakeBuddy® Vantage Select™

Now you have a choice of "Full" and "Proportional" Braking

Full braking technology takes the entire weight of the towed vehicle off the motorhomes brakes. Proportional braking technology allows the towed vehicle to mirror the same braking force as the motorhome. Vantage Select™ is the only portable braking system that allows you to choose your braking preference at the touch of a button.

The Vantage Select™ also includes:
 Digital push button settings
 Memorizes the last settings used
 Fully automatic one-touch start up button
 Advanced terrain sensing technology.

Vantage Select Complete System
 Includes: Diagnostic Wireless Remote, 30469 Break-Away System.
 Optional Accessories:
 Convenient Storage Bag, 12-Volt Battery Direct Kit.

Digital Air Pressure Setting
 Controls air pressure in cylinder. You can adjust the pressure to the exact weight of your towed vehicle

One Touch Auto Start Button

S/O (Special Order) Wireless Diagnostic Remote
 The new Vantage Select™ Diagnostic Remote lets you choose between "full" and "proportional" braking and adjust sensitivity on-the-fly from the coach. The wireless remote has an ergonomic flip-top design that is secured with a nonskid pad, no permanent installation is required. The remote notifies you of BrakeBuddy activation, braking mode, breakaway situation, low battery and to check unit. Included in the #30738 Vantage Select complete system. Powered by AA and/or 12V plug.

30469 Break-Away System
 North American towing laws require a Break-Away System. In the event your towed vehicle separates from the motorhome, the Break-Away System will apply the brakes of the towed vehicle, bringing it to a controlled stop. Included in the Vantage System.

39305 12-Volt Supply Kit
 Optional kit upgrades the towed vehicle's cigarette lighter socket to 12-volts by connecting direct to the towed vehicle's battery. For Classic or Vantage.

PROTECT YOUR INVESTMENT
30335 Storage Bag Kit
 Protect your BrakeBuddy when not in use with this durable protective canvas storage bag. It features padded walls and carry straps making it easy to transport. Knee pads is included to assist with installation. Fits Classic or Vantage.

System Diagnostics
 Alerts you of any system failures

12-Volt Power Plug

Clevis
 Attaches easily and securely to any vehicle's brake pedal

Lighter

Plug-In
 For the Break-Away System

100% Consumer Preference Full+Proportional

Sensitivity Settings
 Adjust the braking response desired to suit your personal driving preferences and road conditions

Braking Mode
 Choose braking preference "full" or "proportional" technology

Adjustable handle
 Adjusts to fit snug against the driver's seat

Patent Pending Wireless Diagnostic Remote
 Adjust the breaking mode and braking sensitivity from the Coach

Vantage Select™ Specifications

Size: 9" x 11" x 14"

Weight: 12 lbs

Power Supply: 12 volts, amperage draw of 10 amps.

Warranty: A full 3-year limited warranty on parts and labor; 30-day full money back guarantee. 2-year extended warranty also available (special order).

All specifications are subject to change without notice.

BrakeBuddy:

30738 Vantage Select™ Complete System

#39504 1

39500 Classic™ Complete System #39499 1

Accessories and Replacement Parts:

39302 Alert System (Classic) #39302 3

S/O Alert System (Vantage Select)

39303 Break-Away System (Classic) #39303 36

30469 Break-Away System (Vantage) #39327 1

39305 12V Kit, Direct 12V Supply (Classic & Vantage) #39305 1

30062 Repl. Clevis(Classic & Vantage) #39309 1

30335 BrakeBuddy Storage Bag (Classic & Vantage, and BOOST Series) #39324 1