


JACK™ DIGITAL TV ANTENNA
JACK™ ANTENNAS

Upgrade to the latest antenna technology and get maximum reception of the new digital TV signals. The sleek, aerodynamic JACK™ antenna is fixed at 12" high eliminating the need to crank up or down and is always ready for travel. An amplified, ultra high gain antenna provides the best digital TV reception available for your RV with superior reception of both VHF and UHF signals and a much broader reception range. The built-in SureLock™ Digital TV Signal Finder let's you pinpoint the local TV towers before scanning for channels for simple, fool-proof antenna pointing. Full 360° rotation allows for precise antenna pointing with no "dead spot" commonly found with other antenna mounts. An LED light on the head confirms power to the built-in amplifier via the supplied wall mount power injector switch. At just 12"H x 16"W x 12.5"L, the JACK™ is up to 70% smaller than other antennas and provides superior reception of the new digital TV signals.

87581 Jack Antenna, White #OA8200 1

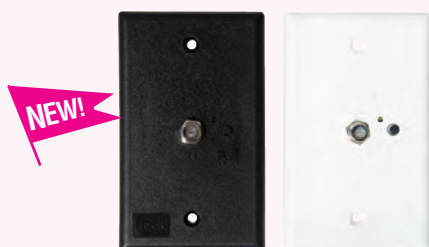
87582 Jack Antenna, Black #OA8201 1


REPLACEMENT HEADS

Replace your old Sensar® antenna with the JACK™ replacement head for better digital TV reception. Includes custom bracket for simple retrofit to your existing antenna mast using the existing mounting pins. Broader reception range helps to receive signals found in the "dead spot" or 35° of rotation not reached by the existing mount. The amplified antenna can be powered by your existing antenna power supply or used with the included power injector. A universal mounting bracket is also included for installation on a pole or railing for residential use. At just 2.25"H x 16"W x 12.5"D, the JACK replacement head is 70% smaller with improved wind resistance and weighs 25% less than the existing antenna head.

87264 Replacement Head, White #OA-8000 10

87580 **NEW!** Replacement Head, Black #OA8001 10


ANTENNA POWER INJECTOR SWITCH

Twelve volt DC power supply for amplified antenna with flush wall mount plate. Inputs for TV antenna and cable with built-in selector switch. F-type connectors for 2 TV outputs.

87583 Antenna Power Supply, White #PB1000 1

87584 Antenna Power Supply, Black #PB1001 1

SURELOCK™ DIGITAL TV SIGNAL FINDER

SURELOCK™ DIGITAL TV SIGNAL FINDER

Use the SureLock™ to pinpoint the location of local TV towers before doing a channel scan for simple, fool-proof antenna pointing. Greatly reduces set-up time and frustration by eliminating the need for multiple channel scans in different directions. Simple plug-n-play design connects to any available TV antenna output or may be installed inline between the antenna and TV. Rotate the antenna until the maximum number of LED's are illuminated in the signal meter, then run a channel scan. Variable gain control feature let's you adjust sensitivity for optimal resolution in both strong and weak signal areas. For use with any over-the-air TV antenna. 3"H x 3"W x 1"D.

87572 SureLock Signal Finder #SL1000 40



King-Dome^{AIR}



KING-DOME SATELLITE SYSTEMS

KING DOME^{AIR}: ONE ANTENNA FOR ALL YOUR DIGITAL HDTV VIEWING!

King Controls' patent-pending King-Dome AIR with Advanced Integrated Reception lets you enjoy digital satellite and high definition broadcast TV viewing from a single antenna system that is completely self-contained in a weatherproof dome mounted on your RV's roof. There's nothing to raise or lower – the King-Dome AIR is always ready to go.



SATELLITE ANTENNA FEATURES: • One touch operation • Latest DVB technology for positive satellite identification • Automatic satellite switching by simply changing channels • Dual LNB for 2 receivers • Works with HDTV programming for Dish Network and Bell TV • Works with DirecTV, Dish Network and Bell standard digital service.

OVER-THE-AIR ANTENNA FEATURES: • Combine with existing digital OTA antenna for multi-directional TV reception • Improves digital signal reception in UHF band • Wider reception range than traditional RV antennas.

SERVICE PROVIDER COMPATIBILITY: • DIRECTV 101°, 119° • DISH 500 110°, 119° • DISH NETWORK HD 61°, 110°, 119°, 129° • Bell 91° • Bell HD 82°, 91°.



KING DOME^{AIR} STATIONARY AUTOMATIC

Just park and push – fully automatic operation.

With completely automatic satellite acquisition, all you need to do is decide what to watch! Just park, press a button and within minutes you have all your favorite channels at your fingertips. Provides a seamless program guide for all available channels and automatically switches satellites when you select a new channel on a different satellite. Use with Dish Network HD programming to get the most available HDTV channels nationwide. Fully compatible with both Eastern and Western arc satellite trios and is easily configured from control panel – no need to remove dome cover.

10315 Stationary Auto, 12" – White #KD-2200 ♦ 1

10317 Stationary Auto, 12" – Black #KD-2200-B ♦ 1

15105 In-Motion Upgrade 9704 & KD2200 Series

#9743 1

KING DOME^{AIR} IN-MOTION

Enjoy live satellite TV while heading down the highway.

Get up-to-the-minute news, weather and sports or watch a blockbuster movie while on the way to your next destination. With the King-DomeAIR In-Motion antenna you get reliable, crystal clear satellite TV reception while parked or driving. You also get the most HD channels available via satellite and off-air from a single antenna for the ultimate HDTV experience. When driving into your campsite, you'll know you have an unobstructed view to the satellite before you even let the jacks down.

10316 In-Motion, 12" – White #KD-3200 ♦ 1

10322 In-Motion, 12" – Black #KD-3200-B ♦ 1

TRAC-KING

Extremely fast satellite tracking & full digital display.

With tracking speeds greater than 60 degrees per second, the Trac-King is the fastest in-motion satellite TV antenna available. Offers truly silent operation. A unique rotary joint design provides for a single cable installation. A digital display shows satellite signal strength, which satellite is being tracked and offers full diagnostics. Off-air antenna feature not included. Use with standard programming for DirecTV and Bell TV.

13245 Trac-King, 12" – White #9762-LP ♦ 1

14493 Trac-King, 12" – Black #9762-LP-B ♦ 1

RAIN FADE SOLUTION

Improves satellite TV reception during rain (white domes only).



14291 5-oz. Spray
#1830 12

14496 Single Wipe
#1830-SP 1

* More accessories are presented on page 44.

MORE ACCESSORIES!

DIRECTV HD Converter allows reception of specially formatted HD signals available from DIRECTV's 110 satellite.

14489 HD Converter, 9762 Series
#9747 1

15106 HD Converter, 9704 & 9754 Series
#9748 1

King-Dome installation & diagnostic tool.

10997 Diagnostic Tool #1844 1



King-Dome systems are compatible with Dish Network and Bell HDTV. These antennas do not receive DIRECTV HD. Dish Network, DIRECTV and Bell TV are trademarks of their respective companies.

ANYWHERE SATELLITE TV

KING CONTROLS



Experience Satellite TV Without Boundaries



VUQUBE SATELLITE SYSTEMS

TAKE YOUR FAVORITE SATELLITE TV PROGRAMS ANYWHERE LIFE TAKES YOU!



VQ1000 REMOTE CONTROLLED

- Single cable connection – no additional power cable required • Powered by your satellite receiver over the coaxial cable • Auto-satellite switching for Dish Network and Bell TV standard and HDTV programming • Tamper proof security ring for theft protection • Exclusive self leveling feature offers fast, reliable operation with no need for tripod or other leveling accessory • Supports 1 receiver.

Used as a primary satellite TV antenna or as a back-up to your roof mounted antenna when parked in a wooded campsite, the VQ1000 is affordable and much easier to use than traditional portable dishes. Just set it on the ground, picnic table or anywhere you have a clear view to the southern sky and use the wireless remote control to point the dish from inside your RV. No need to level. Can also be used for tailgating, trips to the cabin, backyard barbecues or anywhere you want.

16746 VuQube Remote Controlled, With Auto-switching #VQ-1000 1

VQ2000 AUTOMATIC



- One-touch, fully automatic search • Self leveling – no need for tripod or other leveling accessories
- 12 volt or 110AC power for greater versatility – converter included • Built-in diagnostics to show when signal is blocked
- Automatic satellite switching • HD compatible for Dish Network & Bell TV • Dual LNB for 2 receivers.

A fully automatic satellite dish with the same features as roof mounted antennas - yet is 100% portable. The VQ2000 gives you two antennas for the price of one! Use the optional flex install kit to secure the VQ2000 to your RV's ladder without increasing the overall height of your rig. When parked in the trees or you want to take your satellite TV somewhere other than camping, simply remove the antenna from the quick release bracket and take it wherever you'd like.

17403 VuQube Automatic #VQ-2000 1

VQ3000 IN-MOTION TRACKING



- All the same great features as the VQ2000 plus in-motion tracking • Enjoy live satellite TV while heading down the road • Provides reliable reception, even on winding roads • Use with Flex Install Kit for fixed and portable use • Rugged design - originally developed for long-haul trucks.

It's an automatic, it's a portable, it's an in-motion antenna all rolled into one compact design. The VQ3000 offers what no other mobile satellite antenna can, and for those who want the ultimate in performance and flexibility – the VuQube in-motion is the perfect solution.

17404 VuQube In-Motion #VQ-3000 1



**VuQube antennas are compatible with Dish Network and ExpressVU HD programming. They are not compatible with DIRECTV HD.*

ENJOY ALL THE ADVANTAGES OF AN AUTOMATIC SATELLITE AND PORTABLE DISH ALL-IN-ONE!



FLEX INSTALL KIT

Includes ladder bracket, controller and cables to add a fixed mounting location for VQ2000 & VQ3000.

17407 Flex Install Kit
#MB-410 1

LADDER BRACKET

Use to secure any model VuQube antenna to your rear ladder. Quick release with security lock. No cables included.

17405 Ladder Bracket
#MB-400 1

ANYWHERE SATELLITE TV





TRAV'LER® MULTI-SATELLITE TV ANTENNAS

Bringing you the ULTIMATE in satellite TV viewing!

- The only antenna capable of viewing all satellites at the same time.
- DIRECTV Slimline is the only antenna to offer complete DIRECTV HD
- Approved and certified reflectors for strongest signal strength
- Works great with DVRs /PVRs• Low profile stowed
- Compatible on all RVs
- Can tolerate a roof slope of +/- 5° off level



Stowed

TRAV'LER DISH 1000/BELL TV



DISH Network's premier reflector dish used for home systems. Automatic, one button on/off antenna views all satellites at the same time for maximum reception performance. Works great with DVRs! Receives all DISH Network® standard and HD programming from satellites (110°, 119° and 129°) simultaneously. Also receives all Bell TV standard and HD programming from satellites 82° and 91° simultaneously.

86831 Trav'ler Dish 1000/Bell TV
#SK-1000 ♦ 1

TRAV'LER DIRECTV® TRIPLE LNB



Ideal for DIRECTV customers interested in receiving all standard DIRECTV programming, not HD. Automatic, one button on/off antenna views all DIRECTV KU-band satellites (101°, 110° and 119°) at the same time for maximum reception performance. Not compatible with DIRECTV KA-band satellites. Works great with DVRs!

86828 Trav'ler DirectV Triple LNB
#SK-3003 ♦ 1

TRAV'LER DIRECTV® SLIMLINE KU/KA



Get everything DIRECTV has to offer with the TRAV'LER Slimline! This fully automatic, one button on/off antenna receives programming from all 5 DIRECTV satellites at the same time for maximum HD and standard DIRECTV coverage! Receives both KU-band satellites (101°, 110° and 119°) and KA-band satellites (99° and 103°) signals simultaneously. Works great with DVRs!

86829 Trav'ler DirectV Slimline KA/KU
#SK-3005 1

TRAV'LER SHAW DIRECT



The solution for Canadian RVers! Fully automatic, one button on/off antenna receives signals simultaneously from Shaw Direct KU-band satellites 107.3° (English language programs) and 111.1° (French language programs and HD programming). Works great with PVRs. Order both models listed below for complete unit.

87096 Trav'ler Shaw Direct Mount
#SK-7002 ♦ 1

87097 Trav'ler Shaw Direct Reflector & LNB #SKA-722 ♦ 1

Model	DISH 1000 BELL TV 86831	DIRECTV SLIMLINE 86829	DIRECTV TRIPLE LNB 86828	SHAW DIRECT 87096/87097
Type	Stationary	Stationary	Stationary	Stationary
Satellite Viewing	3 at a Time	5 at a Time	3 at a time	2 at a time
DIRECTV Basic	No	Yes	Yes	No
DIRECTV HD	No	Yes	No	No
DISH Network HD	Yes	No	No	No
Bell TV HD	Yes	No	No	No
Shaw Direct HD	No	No	No	Yes
Stow Height	9.75"	9.75"	9.75"	11.75"
Unit Weight	45 lbs.	53 lbs.	43 lbs.	54 lbs.
Dimensions	42"L x 26"W	44"L x 34"W	40"L x 24"W	48"L x 38"W

Winegard, Sensor, Trav'ler, RoadTrip, Carryout, and Wingman are registered trademarks of Winegard Co. Digital Magic, RoadStar, MiniMax and MP1 are trademarks of Winegard Co. DISH Network is a registered trademark of EchoStar Satellite L.L.C. DIRECTV is a registered trademark of DIRECTV, Inc., a unit of Hughes Electronics Corp. Bell TV is a trademark of Bell Canada, Inc. Shaw Direct is a trademark of Shaw Satellite G.P. VuQuibe is a trademark of King Controls. All other trademarks are official trademarks of their respective owners.

TRAV'LER ACCESSORIES

Communication cable 25' long extension power/communication cable. Connects directly to the existing TRAV'LER power/communication cable to allow for runs up to 50'.

S/O Communication Cable 25' #CL-SK26

Roller plate designed to create solid landing area for LNB arm. Ideal for rubber roofs.

S/O Roller Plate #SKA-004

Mounting plate (Opt.) designed for extra support in thin roof installations.

S/O Mounting Plate #SKA-008



All Winegard Antennas made in USA.



ROADTRIP® MINIMAX™ AUTOMATIC 15" SATELLITE TV ANTENNAS

What makes this antenna so great is its MINI size and MAXimum signal reception. Ultra compact size gives it the smallest footprint on the market. MiniMax features an enhanced antenna design and a high-gloss rounded dome to deliver maximum performance in bad weather (rain, dew, snow).

Easy one-button on/off automatic operation with DVB technology to provide fast satellite acquisition. Single satellite viewing antenna automatically switches between satellites. Supports two receivers so you can watch different programs from the same satellite on two TVs at the same time. Receives all standard and HD programming from DISH Network® and Bell TV; standard DIRECTV® only. Not compatible with DIRECTV KA-band satellites. Includes wall switch, power and coax cables. Only 15"H x 20", unit wt. only 13.5 lbs, ship wt. 20 lbs.



15" RoadTrip Minimax In-Motion Antenna

87508 "In-Motion", White #RT8000T 1

87509 "In-Motion", Black #RT8035T 1

15" RoadTrip Minimax Stationary Antenna

87252 "Stationary", White #RT8000S 1

87253 "Stationary", Black #RT8035S 1



RoadTrip Minimax
20"



RoadTrip SDi/SD
32"

	RoadTrip MiniMax	RoadTrip MiniMax	RoadTrip SDi	RoadTrip SD
Model	87508(Wh)/87509(Blk)	87252(Wh)/87253(Blk)	86278(Wh)/86279(Blk)	86276(Wh)/86277(Blk)
Type	In-Motion	Stationary	In-Motion	Stationary
Satellite Viewing	1 at a time/auto toggles	1 at a time/auto toggles	1 at a time/auto toggles	1 at a time/auto toggles
DIRECTV Basic	Yes	Yes	Yes	Yes
DIRECTV HD	No	No	No	No
DISH Network HD	Yes	Yes	Yes	Yes
Bell TV HD	Yes	Yes	Yes	Yes
Ht. x Dia.	15" x 20"	15" x 20"	12.5" x 32"	12.5" x 32"
Unit Weight	13.5 lbs.	13.5 lbs.	35 lbs.	35 lbs.
Ship Weight	20 lbs.	20 lbs.	50 lbs.	50 lbs.

All Winegard Antennas made in USA.



ROADTRIP® SDi and SD AUTOMATIC 12" ROOF MOUNT SATELLITE TV ANTENNAS

RoadTrip SDi in-motion and SD stationary automatic antennas feature a simple one-button operation and a sleek look and are ideal for RVs with height restrictions. DVB technology ensures extremely fast and accurate satellite acquisition. Antennas are equipped to receive programming from a single satellite at a time and automatically toggle between multiple satellites depending on the provider.

Receives all standard and HD programming from DISH Network® and Bell TV; standard DIRECTV® only. Not compatible with DIRECTV KA-band satellites. Supports two receivers so you can watch different programs on the same satellite. 32" diameter, 12.5" dome ht, wt 35 lbs, ship wt 50 lbs.



12" RoadTrip SDi In-Motion Satellite TV Antenna

86278 "In-Motion", White #RT1200T ♦ 1

86279 "In-Motion", Black #RT1235T ♦ 1

12" RoadTrip SD Stationary Satellite TV Antenna

86276 "Stationary", White #RT1200S ♦ 1

86277 "Stationary", Black #RT1235S ♦ 1



See 15" Minimax
for details



+12 V POWER SUPPLY

Converts any standard 110 VAC electrical outlet to a +12 VDC power source. Output: 13.8 VDC, 6 amp. Never search for a 12V power source again!

S/O 12V Power Supply #PS-1208



All Winegard Antennas made in USA.

12" ROADTRIP ACCESSORIES

Dish Network HD Upgrade

Designed for pre-2009 12" RoadTrip models. Electronic board upgrade kit allows antenna to receive DISH Network HD programming from KU-band satellite 129°. Toggles between all three DISH Network satellites. For installation under the dome.

S/O RoadTrip Stationary DISH HD Upgrade
RT12HDS

S/O RoadTrip In-Motion DISH HD Upgrade
RT12HDT

12" RoadTrip Upgrade Kit motion

Convert RoadTrip SD antenna to RoadTrip SDi in-motion antenna.

S/O Upgrade Kit # RT-1205

Fifth Wheel Kit

Leveling brackets for mounting RoadTrip antenna on unlevel surface.

S/O Fifth Wheel Kit # RT-5012





100% Automatic!

CARRYOUT PORTABLE SATELLITE TV ANTENNA

- Automatically switches between satellites - no remote or controls needed
- View one satellite at a time
- Easy grip handle for effortless carrying
- Eyelet on base for added security
- Standard DIRECTV programming
- Standard and HD DISH Network and Bell TV programming
- Supports up to 2 receivers
- Stationary use only



DISH Network
Bell TV
HD
READY

19286 15" Carryout Automatic #GM-1518 1

S/O 15" Carryout Black Dome Only
with Handle# RP-GM35

All Winegard Antennas made in USA.

Carryout Automatic Accessories

• TRIPOD MOUNT

Aluminum tripod elevates your Carryout (both 19286 automatic and 87510 manual models) off the ground for protection from mud and water. Adjustable height settings from 14" to 22". Ground anchor, 6" bungee cord and anchor loop hold the antenna securely. Assembles easily/quickly disassembles for compact storage. Ship. weight, 4.4 lbs

87265 Carryout Tripod Mount #TR-1518 1

• LADDER/POLE MOUNT

Mount your Carryout Automatic Portable antenna to the RV ladder for temporary or permanent installation. Weather resistant powder coated mount features quick disconnect, so you can remove your Carryout antenna and set it on the ground or take it with you anywhere! Extends from 19.5" – 23.5" in two inch increments for 3 setting options. Comes with wall plate with on/off switch for convenient operation from inside the coach, cable entry plate, 50' coax and 25' power cable without lighter adapter plug. Verify your ladder can support total weight of Carryout antenna and mount – 20 lbs. Unit weight 5.5 lbs, shipping weight, 8.5 lbs.

87239 Carryout Ladder Mount #GM-3000 1

• POWER CONVERTER

Sunforce 12V AC/DC power converter allows you to hook up your Carryout to 110V when 12V is not available. 5.8 amps.

10002 Power Converter #55522 20





WINEGARD

CARRYOUT® MP1™

MANUAL PORTABLE SATELLITE TV

Fully encloses inside durable case and features FAST and EASY set-up!

NEW!

25' Coax cable

allows optimal antenna placement and stores in base for easy stowing

Bubble Level

helps to check antenna is level for easy set up

Elevation markings and knobs

assist in elevating and locking antenna at exact angle

Azimuth Lock Knob

threads through center of top portion and base to prevent left to right movement



- Supports up to 2 receivers
- Compatible with 87265 tripod mount
- Dimensions: 17" w x 17" h x 10" d, 9 lbs.
- For Stationary use only
- Standard and HD programming for DISH Network® and Bell TV™
- Standard DIRECTV® programming (Does not work with 110° for HD or KA-band satellites 99°, 103°)

Twist on/off cap provides easy way to fill top portion with water or sand for increased stability

Compass

ensures antenna is pointed to correct southern setting

Durable Case

protects dish while not in use and functions as mount during use



87510 Carryout MP1 Manual Portable Antenna #GM-MP1 1

TRIPOD MOUNT

Aluminum tripod elevates your Carryout (both 19286 automatic and 87510 manual models) off the ground for protection from mud and water. Adjustable height settings from 14" to 22". Ground anchor, 6" bungee cord and anchor loop hold the antenna securely. Assembles easily /quickly disassembles for compact storage. Ship. weight, 4.4 lbs.

87265 Carryout Tripod Mount
#TR-1518 1

SATELLITE FINDER METER

Meter with audio tone helps you align manual satellite antenna to signal. Includes coax for installing meter between satellite antenna and receiver.

82268 Satellite Finder Meter
#SF-1000 6



SATELLITE ALIGNMENT COMPASS

Use local zip code to obtain azimuth setting from satellite receiver. Aim your dish in the direction indicated by the compass. Easy to read instructions printed on compass.

83599 Satellite Compass
#SC-2000 12

DIGITAL SMART COMPASS

Smallest and lightest digital compass. Instant directions and due-north LCD readout. With water resistant case, compass is highly accurate and easy to use. Comes with keychain clip or lanyard. Requires lithium battery, included. Compass measures 1-1/4" x 2".

86268 Digital Satellite Compass
#SC-8000 20



All Winegard Antennas made in USA.



Crank-up and Accessories

18" CRANK-UP SATELLITE DISH WITH DIGITAL MAGIC™ SENSOR

Raise, lower and rotate the 18" dish with hand crank from inside vehicle. Digital Magic™ elevation sensor makes finding the satellite faster and easier. After you park, the LCD readout inside your vehicle shows the elevation of the dish within 2 degrees, even if not parked level. 30" deployed, 8" stowed, wt. 12 lbs.

Crank-Up Dish:

- 84170** Antenna, without Digital Magic Sensor #RM-4600 1
84171 Antenna, with Digital Magic Sensor #RM-DM46 1
84291 Combination 18" Crank-up Satellite Antenna with Omnidirectional over-the-air antenna for local channels. Without Digital Magic. (Not Pictured) #RM-4610 1



All Winegard Antennas made in USA.

DIGITAL MAGIC™ ELEVATION SENSOR

Digital Magic elevation sensor gives the exact elevation of the antenna on an LCD readout inside the vehicle. Accurate to within 2° even when the vehicle is not level. The sensor is installed on the elevating tubes or the back of the antenna and wired to the wall plate. Includes 20' of 3-conductor cable. Requires +12 VDC or a 9V battery. Ideal for models 84170, 84291.



- 82357** Digital Magic Sensor #DM-4000 6

EXTERIOR ROOF WEDGE

Designed to level satellite TV antenna on vehicle with uneven roof. For vehicles with extremely sloped roofs, multiple wedges may be needed. For use with RM model Winegard crank-up satellite antennas.



- 84203** Roof Wedge, RM Series #RW-5000

RM Series Thick Roof Kit (not shown) for RVs with roof thickness of 5" to 6.75".

For RM models only. Includes longer elevating shaft, directional handle and extension.

- 82332** Thick Roof Kit #RP-4200 1

INTERIOR SATELLITE ANTENNA REPLACEMENT CRANK

Replacement interior hand crank for manual crank-up satellite antennas.

- 84531** Replacement Crank Handle #RK-HAND 6



INTERIOR SATELLITE ANTENNA CONTROL PARTS

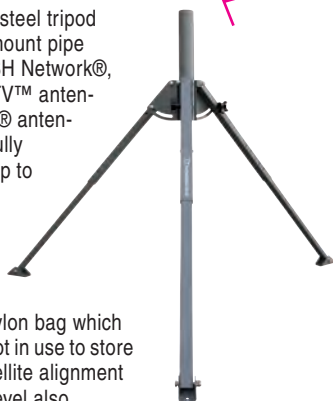
Replacement interior control parts kit for manual crank-up satellite antennas. Includes ceiling plate with directional handle, directional handle extension and hardware. Crank handle sold separately.

- 84530** Ceiling Control Parts Kit #RK-CEIL 1



HEAVY DUTY TRIPOD MOUNT

Sturdy powder-coated steel tripod mount with 1.66" OD mount pipe compatible with all DISH Network®, Shaw Direct and Bell TV™ antennas, plus all DIRECTV® antennas except Slimline. Fully adjustable legs allow up to a 45° angle setting for ultimate stability and expand and retract between 28" - 37" for an optimal setting. Includes handy nylon bag which attaches to leg when not in use to store 3 ground anchors, satellite alignment compass and bubble level also included. Tripod folds to 36" requiring minimal storage space. Wt. 10-1/2 lbs. Made in the U.S.A.



- 87579** Multi-Satellite Tripod Mount #TR-3535 1



TRIPOD/ BASE MOUNT

For use with 18" Home Satellite Dish Antenna (Not for use with Portable Dishes)

Ideal when permanent mounting is not desirable. Great for short stops, wooded areas, boat docks, decks, etc. Works with a standard 18" single satellite viewing home dish. Azimuth degree markings molded in. Includes removable legs, ground anchor, bungee cord, compass and level. Not for use with portable satellite TV antennas. 8-1/4" x 8-1/4" x 19". Weight: 5 lbs.

- 83598** Tripod Mount #TR-2000 1



COAXIAL CABLE

Low loss RG-59 coaxial cable. Connectors attached.

- 80019** 8' Cable Kit #CX-0008 12
80021 25' Cable Kit (Shown) #CX-0025 12



All trademarks and registered trademarks are the property of their respective owners.



SENSOR® IV VHF/UHF/DIGITAL OVER-THE-AIR TV ANTENNA

OPTIMIZED FOR ALL DIGITAL CHANNELS IN ALL U.S. RV MARKETS

INTEGRATED SENSOR® IV HDTV ANTENNA. Winegard has taken the powerfully performing Sensor III antenna and integrated it with the UHF enhanced Wingman® antenna for the ultimate in over-the-air TV viewing! Optimized for the new DTV spectrum, this amplified antenna receives all available VHF/UHF channels so you can enjoy watching all your favorite local programs while parked. Raise, lower and rotate the antenna with hand crank from inside your RV. It's easy to install and lowers to only 4" inches above the roof while traveling. Integrated Sensor head requires 46.25" L x 15.25" W, unobstructed roof space while stowed. RVW-395 includes amplified antenna and lift assembly, +12 VDC white power supply with on/off switch, white interior control parts and 20 feet of 75 ohm coax cable. U.S. Patent D620,483.

INTEGRATED SENSOR IV REPLACEMENT HEAD. Optimized for the new DTV spectrum, this amplified antenna with the Wingman UHF upgrade integrated into the Sensor head receives all available VHF/UHF channels so you can enjoy watching all your favorite local programs while parked. Requires 46.25" L x 15.25" W, unobstructed roof space while stowed. U.S. Patent D620,483.



87512 HD Sensor IV Integrated Amplified Antenna/Lift
#RVW-395 **1**

87511 HD Sensor IV Integrated Replacement head, amplified
#RVW-205 **1**



Fast and Easy UHF Upgrade For Your Sensor® Antenna

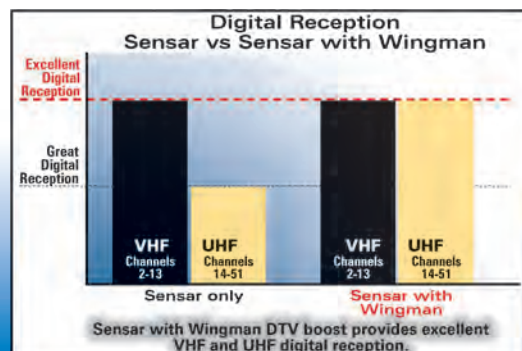


- Lightweight sleek add-on attaches to existing Sensor head II or III with simple snap-on screws
- Increases UHF db gain up to 100% on DTV channels giving you more range
- Compatible with all Sensor antennas made after 1990
- Powder coated for long lasting durability in harsh environmental conditions
- Dim: (Box) 16.5"W x 14"D x 1.4"H; Weight 1 lb.

US Patent D612, 369

WINGMAN™ SENSOR ANTENNA UHF UPGRADE

87174 Wingman Antenna #RV-WING **5**



All Winegard Antennas made in USA.



DIGITAL TV ANTENNAS

Antennas For FREE Digital Programming: ABC, CBS, NBC, FOX, PBS, CW, plus more!

SENSOR® III HDTV ANTENNA

Enjoy local programs in crisp, clear digital and HD FREE with the most popular and most reliable over-the-air antenna in the RV industry! Built-in amplifier and unique circuitry provides clear VHF/UHF reception whenever you park your RV. Raise, lower and rotate the antenna with hand crank from inside your RV. It's easy to install and lowers to only four inches above the roof while traveling. Antenna RV-3095 includes amplified antenna and lift assembly, +12 VDC white power supply with on/off switch, white interior control parts, 20 feet of 75 ohm coax cable, 6 ft. TV set cord. Antenna RV-7095 includes amplified antenna/lift, white control parts, no power supply or cable. Sensor® head U.S. Patent D500,496.

- 85412** Sensor III Antenna with Power Supply #RV-3095 1
85413 HD Sensor III Replacement head, amplified (RV-3095) #RV-2005 1
85415 Non-Amplified Sensor III Antenna #RV-5095 1
85414 Sensor III Antenna without Power Supply #RV-7095 1
80280 Leveling Mount (to replace a broken mount on old-style head) #RP-2000 6



Sensar® Antenna Replacement Parts

SENSOR TV ANTENNA REPLACEMENT PARTS

- 87511** HD Sensor IV Integrated Replacement head, amplified #RVW-205 1
85413 HD Sensor III Replacement head, amplified #RV-2005 1
89496 Elevator Tube Assembly Kit. **Includes:** 2 elevator tubes #2750900, 2 grommets #2200340, 4 pins #5160817, 4 retaining rings #5160817, 1 rubber bumper #2240022, 1 self-drilling screw (#2160120) #RP-2900 25
80280 Leveling Mount Assembly Kit for pre-1990 models. **Includes:** 1 leveling mount #3200625, 4 spacers #3200626, 2 pins #5160817, 4 retaining rings (#5160818) #RP-2000 6
80285 Elevating Gear (Replaces #2200046), Poly Bagged #RP-3000 6
80293 Worm & Shaft Assembly #RP-4000 12
Spec. Ord. Extra Long Worm & Shaft Assy.: • #2750896, 12 1/4" with Directional Handle; • #2764162, 14" without Directional Handle.
89495 Gear Housing Assembly Kit; **Includes:** 1 gear housing #2200049, 2 pins #5160817, 1 bearing #3200656, nuts #2200047, 1 bearing #3200657, 1 o-ring seal #5240603, 1 retaining ring (#5160817) #RP-2049 1
89497 Baseplate Boot Assembly Kit; **Includes:** 1 base plate #3100523, 10 screws #2160178, 1 rubber boot #3200154 #RP-3523 1
89492 Directional Handle Assembly Kit, Ivory. **Includes:** 1 directional handle #3200621, 1 ceiling plate #3200608, 4 screws #5160812, 1 spring #2160822 1 decal #5413002 #RP-6200 4
89493 Directional Handle Assembly Kit, White. **Includes:** 1 directional handle #3200612, 1 ceiling plate #3200609, 4 screws #5160812, 1 spring #2160822 1 decal #5413002 #RP-6300 4
89499 Elevating Crank Kit, White **Includes:** 1 crank, 1 set screw (hex shaft) #RP-6795 12
85159 Handle Spring #RP-6822 12
85169 Nylon Bearing #RP-2658 12
80307 Elevating Crank with Set Screw, Ivory, Straight (Angled handle no longer available) #RP-5000 12



ROADSTAR™ OMNIDIRECTIONAL HDTV ANTENNA

Omnidirectional, over-the-air HD antenna continuously receives VHF/UHF/FM signals from all directions, so you'll never have to adjust it. Built-in solid state amplifier boosts signals on average of 15dB on VHF, 20 dB on UHF. Power supply operates on 12 volt DC.

ROADSTAR RS-2000 SPECIFICATIONS

Height: antenna only: 2 3/16 inches;
 Height: with mount: 8 3/16 inches;
 Diameter: 21 1/2 inches;
 Weight with mount & hardware: 5 pounds;
 Bandpass: VHF/FM: 54-216 mHz;
 UHF: 470-810 mHz;
 Amplifier gain: VHF: 15.5 dB avg.;
 UHF: 19.5 dB avg.;
 Impedance: 75 ohm;
 Power required: 12VDC at 85 ma.

- 83315** RoadStar HD Antenna
 #RS-2000 1

WINEGARD ANTENNA TOOL

Antenna tool features a long shaft for tightening 15/16 gear housing nut for Sensor and crank-up RV satellite systems.

- 82263** Antenna Tool #TT-1000* 6

All Winegard Antennas made in USA.

All trademarks and registered trademarks are the property of their respective owners.



WINEGARD ANTENNAS & ACCESSORIES

RV ELECTRONICS
& GAUGES

C

In Section C: Satellite Antennas TV Antennas Antenna Accessories Phone Accessories TV Stereo CB Navigation



HD SATELLITE INTERFACE

Compatible with 15" Movin' View 3500 series or 12" RoadTrip dome satellite TV antennas. The Winegard® HD Satellite Interface allows the satellite TV antenna to receive additional programming, including any available HD programming, from 3 or more KU-B and satellites.

HD Satellite Interface Kit: Access additional programming DISH Network™, DIRECTV® Plus and Bell ExpressVu with the Winegard HD Satellite Interface, WB-2700. Upgradeable on 15" Movin' View 3500 series and 12" RoadTrip dome satellite TV antennas. WB-2700 designed for RVs NOT pre-wired with communication cable. Package includes: HD Satellite Interface, 30' MV/RT communication cable, 2' coaxial cable, installation kit, and software upgrade tool. Requires HD-ready TV and HD receiver, sold separately.

86691 HD Satellite Interface Kit
#WB-2700 2

**MORE TV ACCESSORIES FROM
WINEGARD IN THE FOLLOWING PAGES!**



WINEGARD DUPLEX RECEPTACLE COVER



Weatherproof duplex electrical outlet cover to be used with any standard 117V duplex outlet.

14614 Cover, Ivory #WB-1110 12



SATELLITE RV RECEPTACLE

Single outdoor receptacle for 75 ohm coaxial cable satellite input. Features a thick gasket of closed cell neoprene which compresses to seal against most textured surfaces.

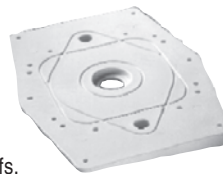
Molded of tough Noryl® material. Stainless steel hardware helps prevent breakage and corrosion. S. steel mounting screws included.

82163 Single Satellite Receptacle, White
#WA-1024 12



WINEGARD ROOF WEDGE

Leveling mounting kit, for use on slanted roofs. Provides a level surface for proper installation of RD-4610 manual system & Sensar® RV antennas.



80416 Roof Wedge #RW-2000 6



WINEGARD TV ANTENNAS

HIDEAWAY TV ANTENNA HA-0130

UHF/VHF/FM travel antenna picks up stations in all directions without rotor. Opens and closes like an umbrella, stores inside weatherproof tube for travel. Ideal for RVs, boats, mobile homes. Includes weatherproof housing with rain cap, shielded antenna cable with connectors, back-of-set UHF/VHF band separator, and hardware.

80005 Hideaway Antenna #HA-0130 1



TV ANTENNA RV-7020

Dipole bi-directional type TV-FM antenna for all RV applications. Straight forward dipole, 82-channel RV antenna provides excellent reception. Easy to install, lowers to side of vehicle when not in use. Complete kit includes hardware, mast and downlead.

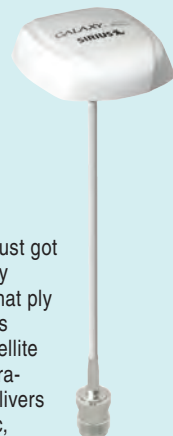
80033 TV Antenna #RV-7020 1



SHAKESPEARE GALAXY® SIRIUS SATELLITE RADIO ANTENNA

Satellite radio for your boat just got easier, and smaller! Specially designed for smaller boats that ply inland waters, Shakespeare's Galaxy® SRA-25 Digital Satellite Radio Antenna sports an ultra-low-profile. Tiny as it is, it delivers plenty: weather, news, music, sports, and entertainment from Sirius Satellite Radio. The versatile SRA-25 accommodates a variety of mounting methods, with or without running its cable through the mounting surface. It comes with a 25' RG-174 cable. Attaches to surfaces up to 1" thick via a 9/16" diameter threaded shaft, or use the included SM-32 Surface Mounting Kit to secure the antenna to flat surfaces where access to the area underneath is difficult or impossible.

- When installed only 3/4" H x 2-3/8" W x 2" L.
- No separate power cable required.
- Single-cable design for newer receivers.
- Style SRS-1 adapter available for older, dual-input Sirius receivers.
- Optional cable kits available for longer cable runs up to 90 feet.
- Shakespeare 1 year Limited Warranty.



86836 Sirius Satellite Radio Antenna
#SRA-25 24

REPLACEMENT PART FOR BRAUND ANTENNAS

WORM AND WORM GEAR KIT

Replacement gear set for Skyliner, Starliner, and Galaxy Antennas. Will not fit the Concord.



84657 Worm and Worm Gear Kit
#11901 1

DUAL ELECTRONICS AM/FM ANTENNA - SOFT WIRE

This Dual AM/FM antenna includes a 40" long flexible wire with plug.



15336 Antenna, Black #MAW40 1



DUAL ELECTRONICS AM/FM ANTENNA - FLEXIBLE MAST



These Dual AM/FM antennas offer a flexible mast for durability, 180° swivel base for increased mounting options, and a 52" cable.

- Angled mounting options allow you to install the antenna in the most convenient locations.
- Corrosion resistant for the marine environment.

Antenna, Flexible mast:

15333 Black #MAR16B 1

15335 White #MAR16W 1



DUAL ELECTRONICS iPLUG™ INTERFACE CABLE

The Dual Electronics iplug allows you to listen to any portable music, video or multimedia player equipped with a 3.5mm headphone jack through any stereo equipped with standard RCA inputs. Compatible with all portable digital music players regardless of manufacturer or platform—the iPlug delivers your music on your terms.

GENERAL: Included are an iplug adapter and a 1M 3.5mm audio cable. Multiple mounting options let you install iplug in the most convenient location for easy access.

14545 iPlug™ Interface Cable, 3.5MM Audio Cable, White #IP35WG 1



RV DESIGNER TV HOOK-UP KIT

Includes exterior jack, interior wall plate and 6' hook-up cable. Gold connectors for high quality signal. Pk/1 set.

84637 White #T201 12



RV DESIGNER INTERIOR TV-HOOK UP CABLE

6' cable with screw-on connectors for permanent TV/video hook ups. Gold connectors for high quality signal. Pk/1.

Grade RG59 Cable:

84628 6' #T173 12

Satellite Grade RG6 TV Cable:

85324 6' #T273 12



RV DESIGNER FLAT CABLE HOOK-UP

Use flat cable through window sill, door jamb, for fast and easy installation of your satellite or cable TV hook-up. No more drilling! 8" long.

85322 Flat TV Cable #T265 1



RV DESIGNER CABLE SPLICE

Join 2 TV/video cables for longer length. Gold for high quality signal. Pk/1.

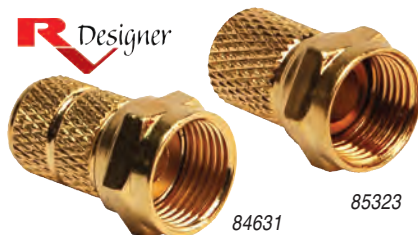
84632 Cable Splice #T187 1



RV DESIGNER CABLE CONVERTER - TWIST ON TO PUSH ON

Converts screw on connectors to push on for easy connect/disconnect. No tools required. Gold for high quality signal. Pk/2.

84629 Cable Converter #T181 1



RV DESIGNER CABLE CONNECTORS

Repair video cables, or remake to custom length. Connectors twist onto cable. No tools required. Gold for high quality signal. Pk/2.

For Grade RG59 Cable:

84631 RG59 Connectors #T183 1

For Satellite Grade RG6 TV Cable:

85323 RG6 Connectors #T283 1



WINEGARD CONNECTORS

COAX CONNECTORS

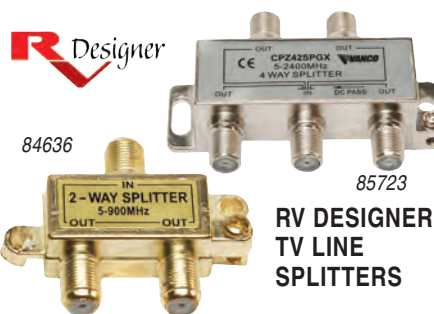
88993 Bag/12 F-59 Coax Connectors #FC-5910 12

80012 Cable Adapter #FS-8100 6

RG-6 COAX CONNECTORS

Used with RG-6 coax cable in satellite installations. RG-6 cable is slightly thicker than the standard RG-59, so it requires these connectors.

84661 Package of 2 RG-6 Connectors #FC-5602 12



RV DESIGNER TV LINE SPLITTERS

2-WAY: Split 1 source signal to 2 locations. Gold connectors for high quality signal. 2-1/8" x 1-3/4".

84636 2-Way Line Splitter, Mounting screws included, Pk/1 #T189 1

4-WAY: Digital. Satellite grade.

85723 4-Way TV Line Splitter, Digital, Clamshell Pack #T195 1

TV & PHONE ACCESSORIES

RV ELECTRONICS
& GAUGES

C

In Section C: Satellite Antennas TV Antennas Antenna Accessories Phone Accessories TV Stereo CB Navigation

WINEGARD 82-CHANNEL TWO-WAY SPLITTER



Two-way line splitter in cast metal housing with ground connection. For coupling or dividing signals on 75 ohm coaxial line. May be mounted outside when boots are used over connectors. All connections are "F" type suitable.



80008 2-Way Splitter #SP-1002 12



WINEGARD ROOF- THRU-PLATE

Roof-through plate for RVs. Allows weatherproof entry of coaxial cable. Has 75-ohm "F" connector on each side.



80492 Roof Plate Jack #RJ-1010 6



RV DESIGNER WEATHERPROOF TV JACK

Use for outdoor cable TV connection. Flip-up cover protects connector from water, etc. Gold connector for high quality signal. 2" x 2". Screws included.



84620 White, Pk/1 #T111 1



WINEGARD WALL PLATE AMPLIFIER

The RA-7296 is a +12 VDC amplified wall plate with cable input jack and second set jack. Use with Winegard's non-amplified RV-5090, or any other non-amplified RV antenna. White.



82267 Winegard Wall Plate Amplifier #RA-7296 6

WINEGARD 12V RECEPTACLE DUST COVER



84290 Dust Cover for 12V Receptacle, White #DC-7341 12



82164

86733

WINEGARD RV OUTDOOR RECEPTACLES

Outdoor receptacles for all RVs where TV, telephone and other appliances will be used outside the vehicle. Outlet covers feature a thick gasket of closed cell neoprene which compresses to seal against most textured surfaces. Molded of tough Noryl® material, equipped with stainless steel hardware to prevent breakage and corrosion. Stainless steel mounting screws included.



CABLE/TV RECEPTACLE

Cable/TV receptacle with two F-jacks for 75 ohm coaxial cable on TV output and cable input. Uses standard coax connectors.

82164 Cable /TV Receptacle, Ivory #WA-1110 6

TELEPHONE/TV RECEPTACLE

Receptacle with one F-jack and one modular telephone plug. F-jack accepts standard coax connectors; telephone jack has modular output and crew connections on input.

TV/Telephone Receptacle:

82165 White #WT-1120 6

86733 Ivory #WT-1110 6



POWER SUPPLY WITH CABLE TV OUTLET for Winegard Antennas

12VDC on/off power supply switch in flush mount wall plate with 2-way splitter, 75 ohm coax cable connection, on/off indicator light and a 12VDC receptacle. Includes 75 ohm input jack for an outside TV signal. Wall plate and power supply are designed as a 1-piece molded unit, and for added protection, feature a fused, printed circuit board.

Power Supply with Cable Outlet:

87362 Ivory #RV-7012 6

89514 White #RV-7042 6



WINEGARD TV ANTENNA/ SATELLITE WALL PLATE POWER SUPPLY

Combination TV antenna/satellite wall plate power supply with cable input jack and built-in two set splitter. Equipped for input of satellite signal from external jack. White only. 1 per pack.



82266 Combination TV/Satellite Wall Plate, White #RV-7542 6



WINEGARD COAX-TYPE 12V TV OUTLET

Combination coaxial TV and convenient 12-V outlet. Fits standard electrical box or mounts directly on wall (if code permits). Ivory.



80047 12-V TV Outlet #TG-7321 6

27803

27804



JR PRODUCTS PLATES



CABLE/CABLE PLATE

Dual cable TV plugs. Flush mounted panel built of durable plastic that resists rust, UV and discoloring. One piece unit with cable plug covers built in makes this the perfect addition for use where satellite and cable TV are available.

27804 Cable/Cable Plate, Polar White, Pkg. #543-B-2-A 1

PHONE/CABLE PLATE

One piece phone/ cable plate is constructed of durable plastic that won't rust, fade or discolor. Access covers are constructed as part of the plate. Easy installation or replacement anywhere a cable TV and phone hook up is needed.

27803 Phone/Cable Plate, Polar White, Pkg. #543-A-2-A 1



The phone and cable TV plates are UV stable, easily installed, fade resistant, water resistant, and have a low profile design.

- 18317** Phone Plate, Polar White
#476-A-2-A 1
- 18318** Cable TV Plate, Polar White
#476-B-2-A 1
- 78839** Cable TV Plate, Colonial White
#476-B-1-A 1
- 27801** Dust Cover Only Polar White
#475-PW-A 1



WINEGARD TV OUTLET, 75-OHM

Flush mounting 75-ohm TV outlet, input and output connection is through 75-ohm "F" jack. Not isolated.



- 80015** TV Outlet, Ivory #OT-8700 6



READY AMERICA STRONG ARM LCD REMOVABLE MOUNT

A new LCD Flat Panel Articulating Wall Mount for RV and Marine use! Holds up to 40 lbs. securely and fits up to 27" screens (VESA 75/100 mount pattern). The arm extends up to 16.4" away from the wall, and the head swivels +/- 20°. Three hinge pivot system for limitless viewing angles. Easy 'On Demand' knob adjustment (no tools required). Two piece design for easy installation. Built in level and cord management hook.

- 86826** LCD Removable Mount
#MRV3500 5



KING CONTROLS ACCESSORIES



DIRECTV® HDTV Receiver With universal IR remote control, receives available HD programming via satellite from DIRECTV, not for use with dome type satellite antennas. Color may vary due to availability.

- 15107** DIRECTV® HDTV Receiver
#H21 1

DIRECTV Receiver w/universal IR remote.

- 13809** Receiver #D12 1

MORE PRODUCTS OF KING CONTROLS ARE PRESENTED ON PAGES 30 to 32!



RV DESIGNER TV WALL PLATE

Interior wall connector for TV/video cable. Gold connector for high quality signal. 2-3/4" x 4-1/2". White plastic. Screws included. Pk/1.



- 84624** White #T141 36

FASTENING SOLUTIONS "THUMB LOCK" TV GRIP KITS

A high strength, easy-release fastening system that's versatile and simple to use. Holds portable TVs, laptops and countertop appliances safely and securely. 3M adhesive pads remove cleanly. Safe for use on furniture and equipment. Two-corner kit holds 13" TV or similar size equipment.



TV Grip Kit:

- 41317** White #MRV-100WT 10
- 41318** Black #MRV-100BK 10



JENSEN LCD TV's MADE FOR RV'S

Enjoy your favorite TV shows or movies in dazzling picture clarity and superior sound quality on the only LCD TVs designed specifically for RV use. Built to withstand rugged road conditions, extreme temperatures, vibrations and voltage variations. The subframe consists of a reinforced internal structure and integrated mounting points. Single-piece metal chassis houses all internal components and does not rely on the plastic cosmetic cabinet as a mounting point, offering increased strength and stability for mobile environments.

JE3208RTL. Quick Overview: • 32" Diagonal Screen • 16:9 LCD Panel • Integrated HDTV (ATSC) tuner • HDTV Ready (1080p, 1080i) • Resolution 1366 x 768 • Brightness 500 Nit • High contrast ratio 1500:1 • HDMI input (2) • Tabletop stand included • Full Function Wireless Remote • Dimensions: 32"W x 22"H x 4.3"D (without stand). Weight 35 lbs.

- 14976 NEW!** 32" LCD Television 100-240V AC
#JE3208RTL 1

JE2608RTL. Quick Overview: • 26" Diagonal Screen • 16:9 LCD Panel • Integrated HDTV (ATSC) tuner • HDTV Ready (1080p, 1080i) • Resolution 1366 x 768 • Brightness 500 Nit • High contrast ratio 800:1 • HDMI input (2) • Tabletop stand included • Full Function Wireless Remote • Dimensions: 26.8"W x 18.7"H x 3.7"D (without stand). Weight 23 lbs.

- 14972 NEW!** 26" LCD Television 110-240V AC
#JE2608RTL 1

JE1909RTL. Quick Overview: • 19" LCD Screen • 12 Volt DC Power (AC Adapter available) • 16:9 Aspect Ratio • Integrated HDTV (ATSC) tuner • HDTV Ready • Resolution 1440 x 900 • Brightness 400 Nit • High contrast ratio 1000:1 • Viewing Angles: 160/170 • Blunt Cut DC Power Cord included • Full Function Wireless Remote • Dimensions: 20.4"W x 15.2"H x 3"D.

- 10184** 19" LCD Television AC/DC
#JE1909RTL 1

TV, STEREO & NAVIGATION SYSTEMS

RV ELECTRONICS
& GAUGES

C

In Section C: Satellite Antennas TV Antennas Antenna Accessories Phone Accessories TV Stereo CB Navigation

Your SOURCE for RV Electronics!



LCD TV's Made For RV'S!

Only Jensen LCD Televisions are specifically engineered to operate smoothly even under the harshest conditions.



JE3208RTL
14976

NEW!



JE2608RTL
14972

NEW!



JE1909RTL
10184

AC/DC



- Resistant to Extreme Humidity & Temperatures
- Metal Frame Interior Support
- Vibration Resistant
- Hi Definition HDMI Inputs

Voyager

Backup Camera Systems



VSS7694TILT 14435



AOS701 14443



AOS562 16198



AOS45TOW 14551



VSS713BW 10285



AOS701BW 10314



AOS562BW 10294



AOS56DWX 14971

NEW!

CD & DVD Wall Mount Radios

AWM910 16380



AWM970 16381



CD, MP3 Input



3 Channel, MP3 & iPod Input, USB Input, DVD

In-Dash Navigation

Pioneer AVICX920BTKIT

15667



- 12 Million Points of interest
- iPod Control
- Rear Cam Input
- DVD-Radio
- Bluetooth

Leisure Time Marketing - LTMRV.com - (800)447-6825



UNIDEN®
40 CHANNEL
PROFESSIONAL
MOBILE CB RADIO

Features: front firing speaker, 3 instant weather channels, instant channel 9 button, one PA/CB switch (lets you instantly select either PA or normal CB operation), RF gain, squelch, LED signal strength meter, TX LED, heavy duty mic and mounting hardware.

751480 CB Radio #PRO538W **6**



JENSEN
WALL-
MOUNT
CD STEREO

Wallmount stereo with CD player keeps the music smooth with electronic CD skip protection (ESP). Plays CD, CD-R, CD-RW and includes electronic tune AM/FM radio with backlit digital display and controls. Preset EQ (Rock, Pop, Classic), clock and alarm, and speaker selector switch (A, B, A+B). Includes front auxiliary input, headphone jack, and hi-power. 12V DC. Dimensions: 10-1/2" W x 7"H x 4"D.

Supplemental Product Information:

- 50 Watts (12.5 W x 4) • Positive LCD Display
- 30 Station Presets (18 FM, 12 AM) • 4 Ch Audio Output; 2 zones • Pushbutton Speaker Selector with LED Indicators • Remote trigger output (Power Antenna Circuit) • Auto-Dimming Display (Power Off) • Mounting Hole Dim.: 9-3/4" W x 6-1/8" H x 3-1/8" D • Weight (Lbs) 4.7.

16380 AM/FM/CD Stereo Black
#AWM910 **1**



DUAL ELECTRONICS 3-WAY INDOOR/OUTDOOR LOUD SPEAKERS, 100W

- Woofer: 4" (100mm) Polyelitte PVA surround;
- Midrange: 40mm Polypropylene; • Tweeter: 20mm Piezo Dome; • Frequency Response: 100Hz-20kHz ±3dB; • Sensitivity: 85.5dB (2.83v @ 1 meter); • Nominal Impedance: 4-6Ω;
- Power Handling: 50W RMS - 100W (IPP). 8.25" H x 5.25" W x 5.25" D; 2.8 lbs each.

3-Way Indoor/Outdoor Loud Speakers, 100W:

14427 Black, Pair #LU43PB **3**

14428 White, Pair #LU43PW **3**



DURASAFE
ELECTRONIC LOCKS
DuraSafe

A unique lock that deters theft of electronics, providing the user with the freedom to leave the boat or RV without having to hide the unit or take it with them. The lock acts as a knob, replacing one factory knob from either side of an electronics unit. Constructed from marine grade materials. Provides an affordable way of protecting electronics while reducing the plug wear from continually having to plug and unplug the unit. Easy to install. Worldwide patent.

SWIVEL MOUNT LOCK SYSTEM

If electronics are installed on a mounting system, the swivel mount lock is necessary to secure the swivel mount. Works on most popular ball mount systems.

Swivel Mount Lock System:

30732 Fits 1" Ball #SM005 **6**

30733 Fits 1.5" Ball #SM006 **6**

UNIVERSAL ELECTRONICS LOCK

Works on any electronics that utilizes a mounting bracket and knobs.

30761 Universal Lock #UEL50 **18**

DUAL ELECTRONICS BLUETOOTH HANDSFREE MODULE • BUILT-IN MIC • VISOR MOUNT

Features: • Bluetooth Version 2.0 (v1.2 compliant). • Supports the following profiles: HFP - hands free profile; A2DP - streaming audio; AVRCP - remote device control. • Communicates with most Bluetooth enabled phones. • Last number redial. • View last 5 received/dialed/ missed calls. • Auto answer/Auto connect. • Caller ID.

General: • Answer and place calls using front panel controls. • Talk button for simplified operation. • Integrated noise and echo cancelling microphone. • Easy 1-wire installation with visor mounting clip and 3 meter cable. • Class 2 support (10m). • Full duplex. • Compatible with the following DUAL models: XDM6400, XDMA6700, DMA6855, XDMA7715 and XHD6425.

16738 Bluetooth Handsfree Module
#BTM60 **1**



DUAL XP265 2-WAY 6.5" SPEAKERS

- 6.5" 2-way speaker with silver anodized PVA treated cone and black surround; • ABS framed metal mesh grille; • Sensitivity 89 dB;
- Freq. Response 60 Hz - 20 kHz; • Recommended Power range: 2-50 watts (RMS); • 120 watts peak (IPP).

14426 2-way 6.5" Speakers, Silver & Black #DS652 **1**



PIONEER NAVIGATION WITH DVD PLAYER; AVICX920BTKIT

Full featured navigation and entertainment system is easy to use as well as easy on the eyes. The 6.1" touch screen panel helps locate destinations in all 50 states. Includes 12 million business listings to help you find gas, medical services, restaurants, shopping, and more. Displays back up camera image (back up camera purchased separately). AM-FM-CD and DVD entertainment and plays MP3 CDs. The built-in Bluetooth hands-free cell phone technology shows the caller ID of incoming phone calls for Bluetooth enabled phones. Allows voice control of iPod music library with accessory cable CDIU50V. Display shows streaming Pandora Internet radio stations when connected to an iPhone. Fits double-DIN dash openings (4"H x 7"W).

Special Order #15667 In-Dash All-In-1 Navigation System #AVICX920BTKIT

clarion DVD MULTIMEDIA STATION



WITH BUILT-IN NAVIGATION & 7" TOUCH PANEL CONTROL

NZ409 Features: • DVD-Video/DVD+-R/DVD+-RW/CD-DA/HDCD CD-R/RW Ready • Built-in Navigation (2 GB Flash Memory Map Storage/Map Coverage: US 50 States and Canada) • 12 Million Built-in POIs • TTS (Text to Speech) for Street Announcements • MP3/WMA Compa-tible with ID3-TAG Display • 18 FM/6 AM Station Presets • Rear USB Connector • iPod Direct Control via USB (CCA723 Cable Required) • Rear AV Input • Rear vision Camera RCA Input • 24-bit D/A Converter • Touch Panel Control • Fully-motorized QVGA Color LCD Monitor • 6ch RCA Output and RCA Rear Video Output • 40 W x 4 Built-in Amplifier • OEM Steering Wheel Remote Ready • Sirius SSP Direct Connection Ready • Bluetooth® Interface Ready (Optional BLT370) • Built-in IR Eye.

Special Order #13706
In-Dash GPS Navigation#NZ409