

In Section H:	Carefree Awnings	Carefree Covers	Carefree Rooms	Carefree Accessories	Awning Accessories	RV Covers	Covers
---------------	------------------	-----------------	----------------	----------------------	--------------------	-----------	--------



GENERAL REPAIR/MAINTENANCE FOR CAREFREE AWNINGS

Quality • Value • Performance • Style



- FOR CAREFREE PIONEER LITE AWNINGS**
- 80225** **NEW!** Lift Handle, White #901071WHT 1
 - 80226** **NEW!** Lift Handle, Black #901071 1
 - 80227** **NEW!** Carport Foot, White #901068WHT 1
 - 80228** **NEW!** Carport Foot, Black #901068 1
 - 80229** **NEW!** Top Bracket, White #901069WHT 1
 - 80230** **NEW!** Top Bracket, Black #901069 1
 - 80231** **NEW!** Bottom Bracket, White #901070WHT 1
 - 80232** **NEW!** Bottom Bracket, Black #901070 1

Converts Carefree spring loaded pull-down awnings to manual crank operation (*Refer to page 263 for more info*).

- 87600** Pioneer Upgrade Kit, White #850001 1
- 87601** Pioneer Upgrade Kit, Black #850001BLK 1

- FOR CAREFREE PIONEER LITE AWNINGS-MANUAL CRANK**
- 80234** **NEW!** Gear Crank Assembly, Black #901073 1
 - 80236** **NEW!** Gear Crank Assembly, White #901073WHT 1
 - 80237** **NEW!** Idler Assembly, Black #901074 1
 - 80238** **NEW!** Idler Assembly, White #901074WHT 1

FOR CAREFREE TRAVEL'R AWNINGS

- 87524** Direct Response Electronics for Travel'r; Simply the best auto retractionsystem available (*Refer to page 261 for more info*) #SR0093 1

MORE PARTS & ACCESSORIES

- 80233** **NEW!** Manual Crank Handle Storage Kit; Storage clips for Crank Handles #901072 1



GENERAL REPAIR/MAINTENANCE FOR MOST AWNINGS

- 85397** Awning Door Roller Kit for most roll-up awnings #901032 6
- 85398** Vinyl Liquid Patch for small holes and tears #901033 6
- 85400** Pull Cane for roll-up travel awnings #901035 48
- 85401** Common Sense Fasteners & screws (18) for Add-A-Room/Screen Rooms #901036 6
- 85402** Snaps (10) for Add-A-Room/Screen Rooms #901037 1
- 85403** Lag Screws (8) for top & bottom brackets #901038C 6
- 85404** Vinyl Patch Kit. Repair kit (2) for sizeable tears in vinyl awnings 5" x 5" #901039 6
- 85405** Awning Rafter Locking Knobs (2), for Carefree roll-up awnings, '96 models and older #901040 6
- 85407** Rubber Bumpers; to eliminate rattling, Set of 2 #901008 6
- 85421** Corkscrew Anchors, for roll-up awnings, Set of 2 #901001 1
- 87602** Crank Handle; Works with almost all manual crank awnings (*Refer to page 263 for more info*) #R001546-RP 1

In Section H:

Carefree Awnings

Carefree Covers

Carefree Rooms

Carefree Accessories

Awning Accessories

RV Covers

Covers



GENERAL REPAIR/MAINTENANCE FOR CAREFREE AWNINGS

Quality • Value • Performance • Style



Item	Part #	Price	Item	Part #	Price
Traction'r Kit; assists the deployment of crank-out or 12V awnings with a metal wrap	80000		Pull Strap Catch, White, for window awnings/slideout awnings (2)	85367	
Remote Lock Replacement Kit, Black, for Spirit/Fiesta, Universal Hardware	85345		Stop Bolt Assembly for most rollup awnings (2)	85388	
Remote Lock Replacement Kit, White, for Spirit/Fiesta, Universal Hardware	85346		Handle Pins for Spirit hardware (Pre-1996) (2) <i>LS</i>	85380	
Storage Lock, Black, for Spirit/Fiesta hardware	85349		Top Bracket, Black, for Spirit/Fiesta awnings	85381	
Storage Lock, White, for Spirit/Fiesta hardware	85350		Top Bracket, White, for Spirit/Fiesta awnings	85382	
Handle for Spirit/Fiesta hardware, Black	85351		Bottom Bracket, Black, for Spirit/Fiesta awnings	85383	
Handle for Spirit/Fiesta hardware, White	85352		Bottom Bracket, White, for Spirit/Fiesta awnings	85384	
Pull Strap for roll-up awnings	85357		Carport Foot, Black, for Spirit/Fiesta awnings	85385	
Sliding Arm Lock for Over the Door and window awnings (2)	85369		Carport Foot, White, for Spirit/Fiesta awnings	85386	
Locking Knobs (2)	85377		Brace Knob with clamp (2), for Spirit/Fiesta/ Simplicity and Pioneer roll-up awnings	85387	
Pull Strap 27" for window awning	85363		Window Awning Bottom Bracket for Add-A-Room/Screen Rooms (2) <i>LS (Canada only)</i>	85390	
Pull Strap 30" for window awning	85364		Add-A-Room Top Brackets for Add-A-Room/Screen Rooms (2)	85391	
Adjustable Pull Strap for window awnings	85365		Sliding Eyelets for Add-A-Rooms (12)	85393	
Pull Strap Catch, Black, for window awnings/slideout awnings	85366		Nut Sert Tool Kit for center rafters (2)	85424	



AWNING TIE DOWNS

Self Storing
(with Carefree Utility Slot Roller).
Fits Carefree, A&E, Carter & Faulkner Roll-up Awnings.

Helps hold your awning steady.
Includes anchors and shock springs.



85422 Awning Tie Downs, Pk/2
#901000



ANCHOR SPRINGS

For use with awnings tie-downs and corkscrew anchors.

85419 Anchor Springs, Pk/2
#901002

AWNING ACCESSORIES FOR MOST AWNINGS

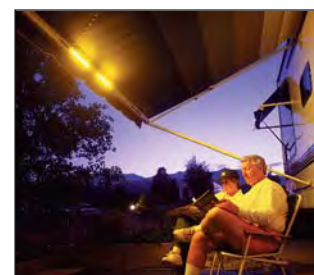
Quality • Value • Performance • Style

THIN LITE AWNING ROLLER LIGHT

12V, bright, bug-free awning light

A rugged 32" light fixture. Shatter and water resistant. Designed to provide a minimum of 3,000 hours of life. Power plug installs on your RV near the top of the entrance door. Receptacle included. Draws only 1.25 amps. Fits Most Awnings. Attaches to extra slot in awning roll bar, or installs into the Spirit FX Utility Slot Roller. Single pack.

87406 Awning Roller Light #908801



AWNING HANGERS

For Carefree Utility Slot Roller

Always stays in the roller and rolls up with your awning. Nothing to lose! Pack of 5.

85418 Awning Hangers #901200

AWNING ARM SAFETY STRAPS

85420 Safety Straps, Pk/2 #901003



CANOPY CLAMPS

These durable clamps mount to your Carefree, A&E or Faulkner patio awning rafter arm and easily fold out when needed. Soft rubber protects your canopy and keeps it from flapping in the breeze. Since they are permanently mounted to your awning there is never a chance of misplacing them. Easy installation.



Canopy Clamps, Pack of 2:
85285 Black #902801
85284 White #902801W

REPAIR/MAINTENANCE ACCESSORIES FOR CAREFREE AWNINGS (... continued)

Item	Part #	Price	Item	Part #	Price
Awning Spring Front f/Simplicity; Mill Finish <i>LS</i>	85338		Patio Awning Spring Front HDuty 18'1"-25'; Black <i>LS</i>	85335	
NEW! Simplicity Awning Spring, Mil, RH, 8'-18', 2012	80219		NEW! Awning Spring RH HDuty 18'1"-25'; Black, 2012	80221	
NEW! Simplicity Awning Spring, Mil, LH, 8'-18', 2012	80214		NEW! Awning Spring RH HDuty 18'1"-25'; Mil, 2012	80224	
Brace Slider (Pre-1997)	85354		Patio Awning Spring Front H Duty 18'1"-25'; White <i>LS</i>	85334	
Brace Slider ('98 and newer)	85353		NEW! Awning Spring RH HDuty 18'1"-25'; White, 2012	80222	
Carport Foot for Sidewinder/Campout <i>LS</i>	85361		Patio Awning Spring Rear 8'-18'; Black <i>LS</i>	85333	
End Cap, Left End, White, for SideOut Kover II	85703		NEW! Awning Spring LH 8'-18'; Black, 2012 update	80213	
End Cap, Right End, Black, for SideOut Kover II	85707		Patio Awning Spring Rear 8'-18'; White <i>LS</i>	85332	
End Cap, Right End, White, for SideOut Kover II	85705		NEW! Awning Spring LH 8'-18'; White, 2012 update	80215	
Flipper Latch for Sidewinder/Campout	85362		Patio Awning Spring Rear HDuty 18'1"-25'; Black <i>LS</i>	85337	
Handle for Freedom, New Style <i>LS</i>	85360		NEW! Awning Spring LH HDuty 18'1"-25'; Black, 2012	80216	
Lower Main Arm Universal White/White	85343		Patio Awning Spring Rear HDuty 18'1"-25'; White <i>LS</i>	85336	
Patio Awning Spring Front 8'-18'; Black <i>LS</i>	85330		NEW! Awning Spring LH HDuty 18'1"-25'; White, 2012	80217	
NEW! Awning Spring Assy RH 8'-18'; Black, 2012 upd	80218		Rafter VII Front End Mounting Assbly; Satin <i>LS</i>	85375	
NEW! Awning Spring Assy RH 8'-18'; Mil, 2012 upd	80223		Rafter VII Front End Mounting Assbly; White <i>LS</i>	85376	
Patio Awning Spring Front 8'-18'; White <i>LS</i>	85331		Spring Assembly (Left) for Omega II	85341	
NEW! Awning Spring Assy RH 8'-18'; White, 2012 upd	80220		Spring Assembly (Right) for omega II	85340	

In Section H:	Carefree Awnings	Carefree Covers	Carefree Rooms	Carefree Accessories	Awning Accessories	RV Covers	Covers
---------------	------------------	-----------------	----------------	----------------------	--------------------	-----------	--------



47879

47881

47902

LIFESAFE PRODUCTS
RV AWNING REPAIR TAPE



Excellent resistance to tearing in any direction, very aggressive adhesive (U.V. stable).

Repairs rips and punctures in: sails • canvas • awnings • rainwear • tents • napsacks • pool covers • canoes • pool liners • hunting apparel • seat covers.
CAUTION NOT FOR AVIATION USE: RV Awning Repair Tape is NOT designed for use in the manufacture or repair of ultralight aircraft, hang gliders, balloons, parachutes or any other aviation products. It must NEVER be used in these applications.

47460 RV Awning Repair Tape 6" x 10" #RE1179 6



FASTENERS UNLIMITED
TWIST TO LOCK HANGER/STOP



Made in the U.S.A., this unique Awning Accessory Hanger and Stop does double duty. Use it to hang accessories from the groove in your awning, while at the same time stops items from sliding. Holds up to 5 pounds. 5 Hanger/Stops per package.



87696

Twist To Lock Awning Acc Hanger & Stop:

87696 Carefree/Girard, 5pk #46113 24

87697 A&E, 5pk #46123 24

LIFESAFE CLEAR POLY AWNING REPAIR TAPE & TARP REPAIR TAPE

LifeSafe emergency repair tape offers the utmost in durability, strength and unbelievably aggressive adhesion even on damp surfaces. Make it a vital part of your tool box or repair kit!

Clear Polyethylene Ultra Strong Tape:

47881 3" x 15 ft., RV Awning Repair Tape #RE3848 6

47879 2" x 36 ft., Heavy Duty Tarp Tape #RE3855 8

47902 RV Awning Repair Tape Display with 8 Packs Tape #ST6016 1



CAMCO AWNING REPAIR TAPE, 5" X 15'



Permanent repair for rips and punctures. Aggressive adhesive; resists tearing in any direction. Use for RV awnings, boat sails, canvas, tents, rain wear, backpacks, pool covers and liners, seat covers, popup campers and more. Package dimensions: 7" x 6.5" x 2.15".

47792 Awning Repair Tape, 5" X 15' #42623 4



CAMCO DE-FLAPPER MAX

A larger version of the original DeFlapper with wider grippers to keep awnings even more stable in wind or rain. Patented. Pack of 2.

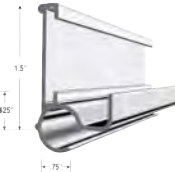
86153 De-Flapper MAX #42251 4

CP PRODUCTS AWNING SPRING

Keeps awning tight, yet allows slight give in high winds. 8" long, 1" diameter. Galvanized steel. 1/2 lb. per spring. Sold each.



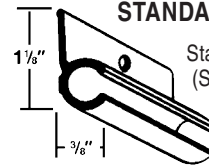
88074 Awning Spring #88074 60



AWNING RAIL

16' artic white awning rails. (Sold only in tube of 10 pieces).

45052 Tube/10 Awning Rail, 16' Artic White #CDS-45052 1

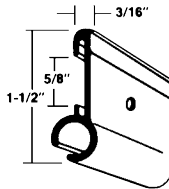


STANDARD AWNING RAIL

Standard awning rail. (Sold only in tube of 10 pieces, 20 ft. long.)

49945 Tube/10 Std. Awning Rail, 20' L, Arctic White #CDS-49945 1

41117 Tube/10 Std. Awning Rail, 20' L, Mill Finish #CDS-41117 1



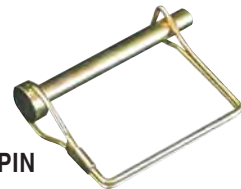
INSERT AWNING RAIL

Combination insert trim/awning rail. (Sold only in tube of 10 pieces, 20 ft. long.) Uses vinyl insert.

45443 Tube/10 Insert Awning Rail, 20' L, Arctic White #CDS-45443 1



HUSKY TOWING PRODUCTS HUSKY SAFETY LOCK PIN



Precision formed, high-strength steel, oil tempered spring stays securely snap-locked. Fits Carefree, etc.

80235 Safety Lock Pin #80235 1



JR PRODUCTS PINS



AWNING LOCK PINS

Positive locking pins for awning arms set up in travel or carport position. Easy on, easy off—but can't accidentally disengage. Pack of 2. 1/4" dia. 3 1/2" wide.

85151 Awning Lock Pins #01164 36

COUPLER PIN

Ideal for quick and secure locking of most trailer couplers. Chrome-plated steel 1/4" dia. 1-3/8" L.

87092 Coupler Pin, Each #01094 36



AWNING PARTS & ACCESSORIES

AWNINGS & COVERS

H

In Section H:	Carefree Awnings	Carefree Covers	Carefree Rooms	Carefree Accessories	Awning Accessories	RV Covers	Covers
---------------	------------------	-----------------	----------------	----------------------	--------------------	-----------	--------



VALTERRA ROPE LIGHT TRACK

A sister product to RV Twin Trak this is specifically made to easily hold rope lights in one track as well as creating the additional awning track for awning drapes or any other hanging accessories. • 6 – 3 foot sections. • UV stabilized PVC. • Holds 3/8" or 1/2" rope lights.

14581 Rope Light Track
#A30-0600 6



VALTERRA RV TWINTRAK®

The solution to installing all the awning accessories you want! This remarkable invention creates two awning accessory tracks doubling the awning hanging space. Whether its sun screens, screen rooms, lights or hanging accessories you can now have it all! Simply slides into the original track and by leaving your awning drape attached it makes drape installation a snap. • 6 – 3 foot sections. • UV stabilized material.

87576 RV TwinTrak® #A30-0500 6



• 1/2" outer diameter.
• UL approved.

14589

80459



VALTERRA ROPE LIGHTS

Light up your outside living area with rope lights. The 18' length is designed specifically for installation on RV awnings. Brighten up your nights with these clear lights!

Rope Lights 18' (Not for sale in Canada):

14589 White #A30-0650 12

80459 **NEW!** Multi-colored #A30-0675 6

VALTERRA SPIRAL TIE-DOWN

Corkscrew type heavy-gauge tie-out stake prevents twisting and snarling.

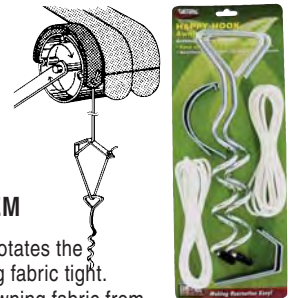
46219 Spiral Stake
#A30-0215 1



VALTERRA CLIP & STAY

Clip and Stay combines a unique patented design with a tough thermal plastic rubber to create "Grip-Action". Hang anything up to 10 lbs and the "Grip-Action" prevents clips from sliding and bunching up! Simply insert the clips into the spare channel of your awning tube and you're ready to hang party lights, clothesline, birdfeeders, signs, flashlights and all sorts of camping gear.

44024 Clip & Stay, Pk/10 #A30-0400 12



VALTERRA HAPPY HOOK AWNING TIE-DOWN SYSTEM

Now a tie-down system that fully rotates the awning tube and keeps the awning fabric tight. Eliminates the separation of the awning fabric from the RV side wall that can be caused by strap-type tie-downs by keeping the tie-down pressure on the main support. The Happy Hook hooks into the roller tube of your awning and easily unhooks for quick awning take down. Complete kit includes two Happy Hooks with cord and screw stakes.

89113 Complete Happy Hook System #A30-0200 24



VALTERRA AWNING BUDDY

A safe and easy way to keep your awning from flapping and fraying. Simply attaches onto the awning fabric and holds securely with a lever closure. Velcro attachment provides a tight connection to side rail.

48300 Awning Buddy, Set of 2, Carded
#A30-0300 1

JR PRODUCTS HEAVY-DUTY AWNING TIE-DOWN



The heavy-duty awning tie-down protects awning from wind and rain damage. Fits awnings up to 25'. Strong 2" poly webbing. Complete with two 15" galvanized steel stakes and 8" tension spring. Comes fully assembled.



41277 25' Tie-Down
#09253 9

RV DESIGNER AWNING KNOBS

46106 For Carefree awnings. Black plastic, 1-5/8" knob with 1-3/4" threaded stem.

46107 For Faulkner and A&E awnings. Black plastic, 1-5/8" knob, 1/2" threaded stem. Pk/2.

46106 Awning Knob, Long, Pk/2 #E351 36

46107 Awning Knob, Short, Pk/2 #E353 36



In Section H:

Carefree Awnings

Carefree Covers

Carefree Rooms

Carefree Accessories

Awning Accessories

RV Covers

Covers



CAMPER SPECIALTIES

By CP Products

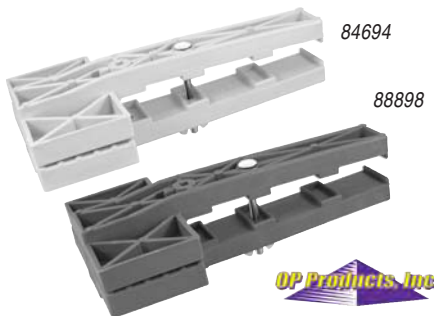
AWNING TIE-DOWN KIT

Protect your awning from wind and rain damage. Heavy-duty 2" poly webbing. Complete with two heavy-duty 15" steel stakes and tension springs.

Awning Tie-Down Kit

87049 For Up To 25' #87049 *g*

88894 For Up To 18' #88894 *g*



84694

88898

OP Products, Inc.

VALTERRA/OP PRODUCTS AWNING SAVER CLAMP

The best and easiest-to-use device for wind control. Secures tightly to the side arms of awnings to prevent wind flapping and accidental rips or tears. Will not harm fabric. No parts to replace. High strength plastic clamps come with a lifetime warranty. Fits most awnings.

Awning Saver Clamps, 2 Sets/Package:

88898 Gray #10252 *12*

84694 White #10253 *12*



JR PRODUCTS SNAPS

UTILITY FASTENERS

The double-quick answer to attaching patio lights, side curtains, poly film, canvas, etc. to awnings, canopies, tents, dividers, etc.

40337 Double Snaps, Pk/4 #05044 *1*

ATTACH-A-SNAP

The simple, no-work answer to attaching side curtains, poly film, canvas, etc., to awnings, tents, tent dividers, privacy curtains, and more.

80936 Attach-A-Snap, Pk/10 #05034 *1*



CAMCO SLIDE-OUT CORNER GUARDS

A simple solution to the danger posed by sharp corners on your slide-outs. Place these soft, flexible corner guards on each exterior corner of your slide-out to cover sharp points and provide a cushion zone. Constructed of advanced UV stabilized resin for long life. Installation is quick and easy -- no tools required!



Slide-Out Corner Guards:

86303 Black #42203 *4*

86302 White #42193 *4*

JR PRODUCTS STAINLESS STEEL PARTY LIGHT HANGERS



Ready for party light hangers that won't break or the rust? These stainless steel hangers are guaranteed to last! Hang your party lights with ease with this design. Clip has the strength to hang on in the strongest of winds. These should be the last ones you will ever need to buy.

48306 Stainless Steel Party Light Hangers, 10/Pkg #05205 *6*



JR PRODUCTS AWNING ROLLERS

Gently lifts awning canopy away from sharp door edges. **80888** is permanently installed; **80164** can be quickly removed if desired. Sold each. Includes mounting screws.

Awning Roller, Each:

80164 Quick Removable Roller #05014 *36*

80888 Non-Removable #05004 *36*

RV DESIGNER KLIPPY KLIPS

Hang lights, flags, banners & more from your RV awning. Klippy Klips swivel & pivot for easy mounting and can stay attached to lights permanently for easy storage. High impact plastic and stainless steel for long life.

46833 Klippy Klip #M111 *12*



GOLD COAST by CAMCO MOVEABLE GROMMETS

Handy tie-down devices easily let you attach a rope or line to tarps, screen rooms, covers or wherever you need it. Pack of 4.

48155 Moveable Grommets #45461 *6*



AWNING PARTS & ACCESSORIES

AWNINGS & COVERS

H

In Section H:	Carefree Awnings	Carefree Covers	Carefree Rooms	Carefree Accessories	Awning Accessories	RV Covers	Covers
---------------	------------------	-----------------	----------------	----------------------	--------------------	-----------	--------



CAMPER SPECIALTIES by CP Products UNIVERSAL WAND

The universal wand features non-slip hand grips with positive twist-lock to provide an extension from 32" to 52-1/2". The hook is specially designed to fit into the awning pull strap for easy opening, and is ideal for retrieving hard-to-reach items in basement storage compartments. Brightly colored for better visibility.

- Compact design for easy storage.
- High-grade aluminum shafts.
- Hook is made of high-strength, fiber-reinforced polypropylene.

85321 Universal Wand, CD/1
#85321 1



CP PRODUCTS PULL-DOWN WAND

STRETCH REDUCER! Faulkner Pull-Down Wand fits into the center pull strap for easy opening.

81264 Wand only #81264 1

OP Products, Inc.

VALTERRA OP PRODUCTS AWNING ACCESSORY HANGERS

Use Awning Accessory Hangers to hang lights, plants, camping accessories and anything left to the imagination. Because they slide into the utility slot on any brand awning roller tube there is no reason to use clips that might damage the valance. Pack includes Hangers and "S" hooks.

Awning Hangers, Pk/7:

84791 Black #A77041 20

84801 White #A77045 20



CAMCO LIGHTS OUT™

NEW!

Vent shade prevent light from shining into RV sleeping quarters at night. Easily mounts to ceiling and retracts into the space-efficient housing to allow light inside during the day. Opens to 14-1/8" x 19". Durable, lightweight vinyl's reflective finish reflects heat to keep RV cool.



80762 Lights Out Vent Shade Retractable
#42913 6



GOLD COAST by CAMCO TAILGATE SCREEN DOOR

- Made of durable Polypropylene fabric.
- Fits trailers up to 102" wide.
- Works with cabled doors.
- Height adjustable.
- No See-Um mesh to keep even the smallest bugs out.
- Easy hook & loop attachment.
- Large zippers for easy access.
- Privacy panels.
- Magnetic floor pads.
- Mounts inside or outside.

65709 Tailgate Screen Door, Fits Trailers
Up to 102" wide #45141 1

More shades and covers are presented on pages 291, 293!



**NEW STYLES
ADDED
TO THE LINE!**

NEW!



See the latest addition to the Faulkner family...

Our new Deluxe Multi-Purpose Mats. More details in section M of this book or visit www.faulknerfurniture.com for the latest on Faulkner.

Bring them along wherever you go!

