

In Section I:	Vacuum	Refrigerators & Accessories	Dishwasher	Ranges & Accessories	Washer/Dryer	Water Heaters	Furnace
---------------	--------	-----------------------------	------------	----------------------	--------------	---------------	---------



HIGH PERFORMANCE CENTRAL CLEANING SYSTEM

DIRT DEVIL CENTRAL VACUUM SYSTEM

NEW! Introduction of new Dirt Devil CV1500 ALL-IN-ONE Central Vacuum System and HEPA Filter Replacement Bags.

Powerful and Convenient

How do you keep your RV clean? Standard uprights are too bulky for small spaces and hard-to-clean corners. Mops, brooms and dustpans just clutter up your storage areas. The Dirt Devil® All-In-One Central Vacuum System is a powerful, versatile solution. The quiet, commercial grade power unit captures 100% of vacuumed dirt and debris and deposits it in a remotely located dirt canister-away from your living space.

Space Saving Design

In an RV, space is at a premium. Designed to make more room for what matters most! The Power Unit can be installed under seats, in closets or storage compartments while the Maximizer Cleaning Kit packs a lot of versatile cleaning tools in less than a half a cubic foot of storage.

61982 NEW! Dirt Devil CV1500 All-in-One Central Vacuum System, Black #9614 1

65136 Dirt Devil CV950 LE Complete System, Red #8233-LE 1

65008 Deluxe Cleaning Tool Set (Includes 7' hose, expands to 30'; 2-piece wand set; rug, crevice, upholstery, dusting tool, plus the RugRat handheld turbine powerhead) #7829-BK 1

62062 RV2000 & Dirt Devil Bags, Pk/3 #7767-W 1

HEPA Filtration

The Dirt Devil® CV1500 features HEPA filter bags. The term HEPA (high-efficiency particulate air) describes filters designed to capture 99.97% of all particles 0.3 microns or smaller (too small to see, but the perfect size to penetrate your lungs). This size covers all common allergens, from mold and animal dander to dust mites and pollen, along with some small particles from smoke and pollution.

61983 NEW! Dirt Devil CV1500 HEPA Replaceable Filter Bags, Pk/3 #9597 12

Bags made from an innovative 3-ply electrostatic material that captures the smallest dust and dirt particles (as small as .3 microns).

61432 For Small Wonder Vacuum Bags, Pk/3 #4908 1

QUIET, POWERFUL CLEANING PERFORMANCE THAT'S CONVENIENT AND EASY TO INSTALL!

The CV950 LE is a quiet, commercial-grade central vacuum system that can be installed in a basement, cabinet, under a seat or in a closet. This powerful system is convenient to use, features a high-performance motor and is covered by a 3 year warranty. The CV1500 comes with a 5 year warranty.

The CV950 LE Central Vacuum System also helps extend the life of furnishings and carpets while adding value to your RV or Trailer.

CENTRAL VACUUM SYSTEMS
for Cleaner, Healthier, On-the-Road RV Living

ALL-IN-ONE RETAIL PACKAGE

Now includes the NEW powerful, easy-to-install Dirt Devil® CV950 LE Central Vacuum System and a space-saving accessory kit – ALL at the same low price!



65136



61982



61983

62062



65008

Performance

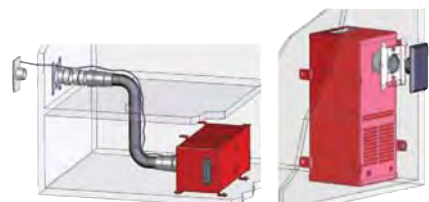
- Creates a cleaner, healthier living environment
- Never recirculates vacuumed dust or odors

System

- UL/CSA certified • Commercial grade quality • High-performance motor • Large one-gallon dirt capacity • Convenient to use • Dual filters • 3-yr warranty.



Specifications	CV950	CV1500
Dimensions	7.5"x7"x14.25"	6.25"x7"x14.5"
Voltage	120 volts (AC)	
Max Amps	11.3	11.7
Motor	With overload and overheat protector; automatically resets when cooled	
Dirt Capacity	1 gallon	
CFM	120	100
Air Watts	450	501
Water Lift	105"	120"



In Section I:	Vacuum	Refrigerators & Accessories	Dishwasher	Ranges & Accessories	Washer/Dryer	Water Heaters	Furnace
---------------	--------	-----------------------------	------------	----------------------	--------------	---------------	---------

NORCOLD GAS ABSORPTION REFRIGERATORS

These RV refrigerators are built to withstand the rigors of the road, as well as exposure to outdoor elements like dust, and dramatic changes in temperatures. "Two-Way" refrigerators are powered by 110-volt AC and LP gas, while "Three-Way" models also work on 12-volt DC. RV refrigeration systems use a gravity-fed evaporator to create the heat which ultimately cools, unlike a home refrigerator, which uses a compressor.



- Easy-to-clean, durable white, powder-coated shelves. • Made in America.

323 (3-WAY), 1.7 cu. ft.

- Easy-to-operate manual controls with automatic gas ignition.
- Built-in, flange mounted.
- Adjustable, removable shelves with tall container storage.
- Easy-to-clean, durable white, powder-coated shelves.
- Taupe trim and door.
- 1-year limited warranty.
- **323:** 1.4-Amps @ 120-V/AC; 11.7-Amps @ 12-V/DC, plus LP Gas.



MODELS N260 AND N300 ALSO FEATURE:

- Adjustable thermostat to respond to high ambient temperatures and varied use.
- Adjustable, removable door bins.



N260.3 (3-WAY), 2.4 cu. ft.

- Built-in, flange mounted.
- Superior cooling performance. • 1-year limited warranty.
- Contemporary door design adds style.
- Beige color; no door panel required.
- **N260.3:** 1.4-Amps @ 120-V/AC; 11.7-Amps @ 12-V/DC, plus LP Gas.



N300 (2-WAY) N300.3 (3-WAY), 2.7 cu. ft.

- Built-in, flange mounted.
- Superior cooling performance refrigerator/freezer.
- 1-year limited warranty.
- Contemporary top-mounted controls. • Beige color; accepts decorative door panels (not included). • **N300:** 1.5-Amps @ 120-V/AC; plus LP Gas; **N300.3:** 1.5-Amps @ 120-V/AC; 9.2-Amps @ 12-V/DC, plus LP Gas.

Order #	Mfr. #	Built-In Refrigerator	Capacity cu. ft.	Cut-Out Dimensions H x W x D	Ship Code	Door Panel Information
62897	#323TR	3-Way, Taupe color	1.7	20 ⁵ / ₈ " x 17 ¹ / ₂ " x 21 ¹ / ₄ "	◆	Included
64600	#N260.3R	3-Way, Beige color	2.4	21" x 19 ³ / ₈ " x 24"	◆	Included
64601	#N300R	2-Way, Beige color	2.7	29 ³ / ₄ " x 20 ¹ / ₂ " x 21 ³ / ₈ "	◆	Accepts door panels (not included)
64602	#N300.3R	3-Way, Beige color	2.7	29 ³ / ₄ " x 20 ¹ / ₂ " x 21 ³ / ₈ "	◆	Accepts door panels (not included)

RV DESIGNER PLUG FOR REFRIGERATOR DRAIN HOSE

Lets water out, keeps dirt & bugs from getting in. Clamshell packaging, 3" W x 5" H x 1" D.

44841 Plug for Fridge Drain Hose, PK/2
#E378 72

See section K for refrigerator vents



CAMCO FRIDGE BRACE

Keep food from sliding as you go down the road. Helps keep cartons upright to reduce the risk of messy spills.

66606 Fridge Brace, Pk/2
#44033 4





NORCOLD GAS ABSORPTION REFRIGERATORS ARE SIZED TO FIT YOUR NEEDS

In addition to leading the field in being compact, efficient and user friendly, these units have significant ergonomic touches to really enhance the vehicle.

N510 GAS ABSORPTION REFRIGERATOR FEATURES:

- Largest capacity – 5.5 cubic feet – in its class.
- Automatic re-ignites on gas if the flame goes out.
- Adjustable thermostat; set interior temperature to your preference.
- Thermostat backup system allows operation until service can be performed.
- Convenient eye-level electronic controls.
- Built-in control diagnostics provide valuable information to simplify servicing, speed repairs and increase customer satisfaction.
- Easy-clean, no-tarnish white powder-coated shelves.
- Adjustable middle shelf.
- Adjustable, removable door bins.
- 1-gal. container shelf storage; 2-liter bottle and 1/2 gal. door bin storage.
- Fresh fruit/vegetable storage bin/crisper.
- Flip-up bottom shelf holds gallon jug.
- Auto change over between gas and electric.
- Easily-reversible, self-latching door opens 150° and accepts side-installed decorative door panels.
- Travel latch with storage position.
- Latch can be mounted on top or bottom of door.
- Intergrated Cover/Baffle over controls.
- Automatic cycle to limit frost buildup on the refrigerator cooling fins.



Model	Amps 120V AC	Amps 12V DC	LP Gas
N410	2.0	—	Yes
N410.3	2.0	14.2	Yes
N510	2.0	.0.4	Yes
N510.3	2.0	14.2	Yes



N410 (2-way) and the N410.3 (3-way) 4.5 cu. ft. FEATURES:

- Largest capacity — 4.5 cubic feet — in its class
- Adjustable thermostat responds to changes in ambient temperature swings.
- Superior cooling performance.
- Convenient eye level controls.
- Freezer compartment.
- Easy to clean, no-tarnish white powder coated shelves.
- Adjustable, removable door bins.
- One-gallon container shelf storage, 2-liter bottle and 1/2 gallon door bin storage.
- Flip-up shelf accommodates gallon container.
- Manual change over between gas and electric.
- Self-latching reversible door opens 180°.
- Travel latch with storage position.
- Flame Current Meter monitors gas ignition.
- 84 lbs. net weight; 98 lbs. shipping weight.
- Made in America
- 1-year limited warranty.

Order #	Mfr. #	Built-In Refrigerator	Capacity cu. ft.	Cut-Out Dimensions	Door Panel Dimensions (not included)		
66392	#N410UR	2-Way - 120 VAC & LP Gas	4.5	36 ⁹ / ₁₆ "H x 23 ¹¹ / ₁₆ "W x 24"D	31"H x 21 ⁵ / ₁₆ "W x ³ / ₁₆ "T	◆	
66292	#N410.3UR	3-Way - 120 VAC, 12 VDC & LP Gas	4.5	36 ⁹ / ₁₆ "H x 23 ¹¹ / ₁₆ "W x 24"D	31"H x 21 ⁵ / ₁₆ "W x ³ / ₁₆ "T	◆	
65427	#N510UR	2-Way - 120 VAC & LP Gas	5.5	42 ⁵ / ₈ "H x 23 ¹¹ / ₁₆ "W x 24"D	37"H x 21 ⁵ / ₁₆ "W x ³ / ₁₆ "T	◆	
65428	#N510.3UR	3-Way- 120 VAC, 12 VDC & LP Gas	5.5	42 ⁵ / ₈ "H x 23 ¹¹ / ₁₆ "W x 24"D	37"H x 21 ⁵ / ₁₆ "W x ³ / ₁₆ "T	◆	

In Section I:	Vacuum	Refrigerators & Accessories	Dishwasher	Ranges & Accessories	Washer/Dryer	Water Heaters	Furnace
---------------	--------	-----------------------------	------------	----------------------	--------------	---------------	---------



NORCOLD GAS ABSORPTION BUILT-IN REFRIGERATORS

These RV refrigerators are built to withstand the rigors of the road, as well as exposure to outdoor elements like dust, and dramatic changes in temperatures. "Two-Way" refrigerators are powered by 110 volt AC and LP gas, while "Three-Way" models also work on 12 volt DC. RV refrigeration systems use a gravity-fed evaporator to create the heat which ultimately cools, unlike a home refrigerator, which uses a compressor.



N641 (2-Way), N641.3 (3-Way)



N841 (2-Way), N841.3 (3-Way)



N841IM (2-Way with Ice Maker)

N600 AND N800 DIAGNOSTIC SERIES FEATURES:

- Superior Cooling Unit for top performance, greater durability and longer road life.
- Adjustable thermostat responds to changes in ambient temperatures and varied use.
- Embedded steel A-frame construction for structural integrity. • One-gallon container shelf storage.
- Easy accessibility to two-liter bottle, half gallon and large container storage.
- Easy-clean, no-tarnish white powder coated shelves.
- Two crispers for storing ample meats, fruits and vegetables.
- Positive lock door handles—convenient, easy to use with either hand.
- Storage latches for air circulation when not in use. • Light shuts off if door left ajar.
- Designed for built-in use (cabinet is unfinished).
- Convenient eye-level controls with built-in diagnostics.
- Black trim; add door panels (not included). • 1-year limited warranty. • Made in America.
- **N600 Series:** 120 lbs. net weight, 139 lbs. shipping weight.
- **N800 Series:** 129 lbs. net weight, 149 lbs. shipping weight.
- **N641 & N841:** 1.2 Amps @ 12V DC, 3.0 Amps @ 120V/AC, plus LP Gas.
- **N641.3 & N841.3:** 3.0 Amps @ 120V/AC, 14.8 Amps @ 12V/DC, plus LP Gas.

In another example of Norcold® meeting customer needs, **factory-installed Cold Weather Kits** now come standard on N641.3 (**62225**) and N841.3 (**62226**) gas absorption refrigerators, allowing them to operate in ambient temperatures down to 0° F.

With the new Cold Weather Kit, Norcold refrigerators can help extend your customers' camping season, along with supporting full-timers and those using RVs for worksite living.

DOOR PANEL NOT INCLUDED; ORDER SEPARATELY

Order #	Mfr. #	Built-In Refrigerator	Capacity cu. ft.	Cut-Out Dimensions H x W x D	Ship Code	Black Door Panel Order Separately		
64963	#N641L	2-Way Diagnostic	6.3	52-7/8" x 23-1/2" x 24"	◆	Top	14-17/32" x 21-19/32"	61289
64614	#N641R					Bottom	31-5/8" x 21-19/32"	61294
64616	#N641.3R	3-Way Diagnostic	6.3	52-7/8" x 23-1/2" x 24"	◆	Top	14-17/32" x 21-19/32"	61289
62225	#N641.3R W/CWK					Bottom	31-5/8" x 21-19/32"	61294
64966	#N841L	2-Way Diagnostic	7.5	59-7/8" x 23-1/2" x 24"	◆	Top	14-17/32" x 21-19/32"	61289
64617	#N841R					Bottom	38-1/2" x 21-19/32"	61300
64618	#N841IMR	2-Way Diagnostic w/Icemaker	7.5	59-7/8" x 23-1/2" x 24"	◆	Top	14-17/32" x 21-19/32"	61289
						Bottom	38-1/2" x 21-19/32"	61300
64621	#N841.3R	3-Way Diagnostic	7.5	59-7/8" x 23-1/2" x 24"	◆	Top	14-17/32" x 21-19/32"	61289
62226	#N841.3R W/CWK					Bottom	38-1/2" x 21-19/32"	61300

In Section I:	Vacuum	Refrigerators & Accessories	Dishwasher	Ranges & Accessories	Washer/Dryer	Water Heaters	Furnace
---------------	--------	-----------------------------	------------	----------------------	--------------	---------------	---------



NORCOLD GAS ABSORPTION BUILT-IN REFRIGERATOR

When It Comes to Luxury, The Ultraline 1210 Speaks Volumes

Quite simply the most convenient and reliable RV refrigerator in America. Your family will love the user-friendly features, the exterior beauty, and the organized and spacious interior.

- 12 well-designed cubic feet of convenient cold storage
- Unique side-by-side, four-door unit keeps cold air loss at a minimum
- State-of-the-art LCD control panel with built-in diagnostics; – Easy to see, – Easy to operate, – Provides valuable information to speed serving
- Superior cooling unit for exceptional performance and durability
- Embedded steel frame; – Ensures long life, – Protects from bending, scratching and corrosion
- Adjustable thermostat responds to changes in ambient temperatures and varied uses
- Thermostat back-up system allows operation until service is performed
- Removable, adjustable shelving and door bins for maximum flexibility
- Made in America. • **60077** – 1210IM (with Ice Maker) • **62211** – 1210MSS (with Ice Maker & Stainless Steel wraparound doors).

Dimensions (cut-out): Height: 63-1/4"; Width: 32-11/16"; Depth: 24"; **Interior Volume:** 12 cu. ft. **Door Panel Dim.:** Upper Door, Height: 18-3/8"; Width: 16-13/64"; Thickness: 3/16"; Lower Door, Height: 41-13/64"; Width: 16-13/64"; Thickness: 3/16"; **door panels not included.** **Fresh Food Compartment:** 8.4 cu. ft. total; **Two Freezer Compartments:** 3.6 cu. ft. total, 1.8 cu. ft. each; **Model 1210IM & 1210MSS:** 3.6 Amp 120V/AC; 5.5 Amp 12V/DC; LP Gas: Yes.

60077 Refrigerator LP/120VAC/12VDC 12 Cu. Ft. with Ice Maker (door panels not included) #1210IM ◆1
62211 NEW! Refrigerator LP/120VAC/12VDC 12 Cu. Ft. w/Ice Maker & Stainless Steel wraparound doors (door panels not included) #1210MSS ◆1



CAMCO FLYING INSECT SCREENS

FOR REFRIGERATOR

Wasps, mud dauber, birds and rodents pose a serious threat to your RV water heater, furnace and stove. They can enter through vents and openings and cause serious damage by building nests that interfere with air flow.

Protect your valuable investment by purchasing and installing Camco's Flying Insect Screens. These easy-to-install screens will help ensure that your vents stay free from costly invasion by unwanted pests.



60393 RS500 Fits RV Refrigerator Vents Except Dometic #42148 6
60395 RS600 Fits Dometic RV Refrigerator Vents #42149 6
60279 NEW! RS700 Fits Norcold Refrigerator, 27.5", Pk/3 #42153 6



VALTERRA FRIDGE/FREEZER THERMOMETER

Hangs or stands. • Accurate from -20°F to 80°F. • Stainless steel. • Use with Fridgecool Fan (**66586**; mfr. #A10-2606) to maintain even refrigerator temperature.

61977 Fridge/Freezer Thermometer, Carded #A10-2620VP 12



CAMCO MINI ICE CUBE TRAYS

Small trays fit perfectly into RV, marine or dorm freezers. Provides small size cubes for quick freezing. (9" x 4" x 1")

46911 Mini Ice Cube Trays, Bag/2 #44100 4



CAMCO FLYING INSECT SCREEN

FOR DOMETIC REFRIGERATORS WITH 8.13" VENTS

Keep out nesting insects, birds and rodents with minimal airflow restriction. Easy to install. Heavy duty stainless steel. Set of 6 – for Dometic RV Refrigerators with 8.13 inch vents. • 0.56" H x 5.06" W x 13.63" L.

61786 Flying Insect Screen-RS800, Dometic Refrigerators 8.13"vents, Bag/6 #42154 12

PORTA GAZ • REFRIGERATOR/FREEZER

MAJOR APPLIANCES

In Section I:	Vacuum	Refrigerators & Accessories	Dishwasher	Ranges & Accessories	Washer/Dryer	Water Heaters	Furnace
---------------	--------	-----------------------------	------------	----------------------	--------------	---------------	---------



PORTA GAZ 3 WAY PORTABLE REFRIGERATOR



- Select from 3 modes of operation: 12V DC vehicle's auxiliary socket, 120V AC Main Power and Universal LP Gas.
- Ideal for camping, day trips, barbecues, caravanning or home use.
- Durable construction with 37 quarts capacity; you can easily store 48 12-oz (355ml) cans.
- Enjoy refreshingly cold drinks and chilled food.
- Rotary piezo gas ignition.
- Bubble Level Indicator.
- Indicators to show the method of operation.
- Comes complete with AC cord and plug, DC cord and accessory adaptor.
- Magnetic seal and tie down rings.
- Thermostat controlled when operating on 120V AC power.
- Silent operation with absorption cooling system.
- 21.6" H x 19.3"W x 19.7"L.
- 1-year limited warranty; no warranty on commercial use.

61211 3 Way Portable Refrigerator, Silver #PG-35G 440



NEW NORCOLD COMPRESSOR REFRIGERATOR/FREEZER

*When your food and drink needs to stay cold –even on the hottest summer day!
Better than a cooler! No Ice!*



NRF-60 SERIES – CAPACITY: 60 LITERS/2.12 CU FT/86 CANS

- CFC-free insulation foam and refrigerant.
- Hermetically Sealed Compressor with built-in low voltage protection.
- Electronic Temperature Control Panel displays the internal temperature and allows you to set desired temp.
- Indicator light alerts you to installation issues.
- Separate refrigerator-only section prevents freezing of select items.
- Battery protection with three settable levels prevents battery drain and automatically turns back on when voltage returns.
- Easy-to-clean, removable wire basket for convenience.
- 304 Stainless-steel interior prevents stains and improves cooling.
- Durable and corrosion-proof plastic exterior with heavy-duty removable handles.
- Included DC cord with cigarette lighter plug.
- Optional adaptor allows AC Operation.
- Easily reversible and removable Hinge Lid.
- 50 lbs. net weight.
- Two-year limited warranty.

- **Electronic Temperature Control Panel (A)** • Set Desired Temperature. • Displays Internal Temperature.
- Tamper Proof Memory Mode. **Separate Refrigerator Only Section (B)** • Prevents Freezing of Select Items.
- Removable Wire Basket for Convenience. • Easy to Cleaning. **Three Stage Battery Protection (C)**

• Prevents Unit from Draining Battery. • Has Three Voltage Settings / Ranging from 10V – 11.3V. • Set the Voltage at which the unit will turn off. • Unit Automatically turn back on when Voltage comes back. • Power Consumption of 55 Watts. 12VDC/24VDC or 120VAC with Optional AC Adapter (MFR#634650).



Order #	Mfr. #	Description	Capacity	Un-Vented Enclosure Dimensions H x W x D	Vented Enclosure Dimensions (H x L x D)	Ship Code	
61196	#NRF60	Portable Refrigerator/Freezer	2.12 cu. ft. (63 QT)	N/A: Portable	24.1" x 28.5" x 18.7"	◆	

In Section I:	Vacuum	Refrigerators & Accessories	Dishwasher	Ranges & Accessories	Washer/Dryer	Water Heaters	Furnace
---------------	--------	-----------------------------	------------	----------------------	--------------	---------------	---------



NORCOLD PORTABLE AC/DC REFRIGERATOR/FREEZERS

KEEP IT COOL, WHEREVER YOU GO!

Norcold's top performing AC/DC portables are dependable, energy efficient and exceptionally quiet. Whether you already have a refrigerator or get by with a cooler, you'll love being able to take the extras along with Norcold's multi-purpose, multi-use refrigerator/freezers.

- Refrigerators become a freezer with the turn of a dial.
- Ideal second refrigerator or freezer.
- Automatic temperature control.
- Convenient lift-out storage basket.
- Easy-access top loading.
- Separate AC and DC cords.
- Off-level operation up to 30°.
- UL-approved components.
- Charcoal & gray color.

MRFT-60, 2.12 cu. ft.

- Largest capacity portable available—up to 100 lbs.
- Convenient dual-removable baskets separate food and drinks.
- Automatically switches from DC to AC when AC is available.
- 1.2-Amps @ 120-V/AC; 4.2/2.1-Amps @ 12/24-V/DC.



67464

NORCOLD AC/DC FREE STANDING REFRIGERATOR/FREEZER-

FOR MOBILE AND MARINE USE

Norcold is the industry leader in marine refrigeration, with features like automatic conversion from AC to DC and back, low current draw, hermetically sealed and self-lubricating compressors, lightweight aluminum construction and handsome, sensible design.

- Free-standing model with mounting legs.
- Full-width freezer compartment.
- Exceptionally quiet, hermetically-sealed compressor.
- Expressly designed for reliability in marine and mobile applications.
- Easy, accessible storage.
- Convenient, large container storage.
- Durable and easy-to-clean white powder-coated shelves.
- Easy open and close door latches—even under the counter.
- Reversible door.
- Off-level operation up to 30°.

DE0788B, 3.1 cu. ft.

- 3.1-cubic foot of storage.
- Exceptionally-quiet, hermetically-sealed compressor - dependable without disturbing noise, even in close quarters!
- Combination refrigerator-freezer.
- Self-venting capability.
- Flush, undercounter mounting.
- Sharp black finish.



69238

Order #	Mfr. #	Description	Capacity	Un-Vented Enclosure Dimensions H x W x D	Vented Enclosure Dimensions H x W x D	Ship Code
67464	#MRFT60	Portable Refrigerator/Freezer ^{LS}	2.12 cu. ft.	N/A: Portable	17 ³ / ₈ " x 31 ¹ / ₄ " x 19 ¹ / ₄ "	◆
69238	#DE0788B	AC/DC Refrigerator	3.1 cu. ft.	30" x 21 ¹ / ₂ " x 20 ¹ / ₈ "	30" x 20 ¹ / ₂ " x 20 ¹ / ₈ "	◆

NORCOLD BUILT-IN REFRIGERATOR/FREEZER

AC/DC MODELS FOR MOBILE AND MARINE USE

A comprehensive line of top-performing AC/DC refrigerators for reliable performance in all mobile applications: boats, vans, trucks, RVs, and more! If it's time to upgrade your current refrigerator/freezer, you'll especially appreciate that these are more energy efficient, with an exceptionally quiet, hermetically sealed compressor—dependable without disturbing noise, even in close quarters. Built-in models have unfinished cabinets, and outstanding features:

- 12V fan aids airflow across condenser and compressor for improved cooling.
- Easy, accessible storage with adjustable, removable door bins.
- Durable and easy-to-clean white powder-coated shelves.
- Convenient, large container storage.
- Safe and stylish recessed doors.
- Easy open and close door latches—even under the counter.
- Reversible door.
- Off-level operation up to 30°.

DE-0041 (2-WAY 12V DC/120 VAC), 3.6 cu. ft.

- Designed for an enclosure.
- Convenient top-mounted automatic temperature control
- Full-width freezer compartment.
- Adjustable door bins hold various container sizes.
- Door panel not included.
- 0.2 Amps @ 120V/AC; 2.8/1.6 Amps @ 12/24 V/DC.



65550

Order #	Mfr. #	Built-In Refrigerator	Capacity cu. ft.	Cut-Out Dimensions H x W x D	Ship Code
65550	#DE0041R	AC/DC Flush Mount	3.6	30 ⁷ / ₈ " x 23 ¹ / ₄ " x 23 ¹ / ₂ "	◆

In Section I:	Vacuum	Refrigerators & Accessories	Dishwasher	Ranges & Accessories	Washer/Dryer	Water Heaters	Furnace
---------------	--------	-----------------------------	------------	----------------------	--------------	---------------	---------



NORCOLD AC/DC BUILT-IN REFRIGERATOR

Top-of-the-line, Two-door Model with Contemporary Flushmount™ styling

This is the coolest unit from Norcold: a large freezer – 1.7 cubic feet – on top of an even larger refrigerator – 5.3 cubic feet. • Interior light • Self-ventilated design for easier integration

- Exceptionally quiet, hermetically-sealed compressor
- Reversible, safe and stylish recessed doors
- 12-volt fan aids airflow across condenser and compressor for improved cooling
- Black exterior trim (optional door panel not included)
- Storage for varied sizes, including 2-liter, 1/2-gallon and 1-gallon containers
- Adjustable, removable, large container door bin storage
- Easy-clean, no-tarnish white powder-coated shelves
- Easy open and close door latches - even under the counter

Dimensions (cut-out): Height: 52-7/8"; Width: 23-1/4"; Depth: 23-3/4"; **Net Volume:** 7 cu. ft. **Door Panel Dim.:** Upper Door, Height: 16-1/2"; Width: 17-13/16"; Thickness: 3/16". Lower Door, Height: 27-1/4"; Width: 17-13/16"; Thickness: 3/16"; *Door panels not included.* **Model 0061:** 0.4 Amp 120V/AC; 3.2 Amp 12-24V/DC.

60179 AC/DC Refrigerator #DE0061R ♦1



DE-0751 AC/DC MARINE/RV/VAN REFRIGERATOR

Our AC/DC refrigerators are quiet, dependable and designed for years of reliable service – perfect for boats, RVs, and vans. The Style Boaters Demand and More.

The sleekly styled DE-0751 Marine can withstand the harsh exposure to sun and salt with uncompromised performance.

- 2.7 cubic feet of interior space • Flush and proud mount capability
- Door liner features 2 bins, lower bin holds 2-liter bottles
- Ergonomic handle/latch is integrated with door for a positive lock
- Controls and power supply at top for easy access
- Integrated circuit to sense high-current and auto re-set
- Automatic AC-to-DC change over • Low noise and power consumption
- Heavy duty hinges are durable in the roughest conditions
- Best warranty in the market

Dimensions (cut-out): Height: 20-1/2"; Width: 18-1/2"; Depth: 21"; **Interior Volume:** 2.7 cu. ft. **Model 0751:** 0.7 Amp 120V/AC; 3.0 Amp 12-V/AC; 1.5 Amp 24V/DC.



69242 AC/DC Marine/RV Refrigerator #DE0751BBT ♦1

RV DESIGNER LATCHES

REFRIGERATOR/ CONVERTER VENT LATCH

Latch commonly used on exterior access door for fridge vent, inverter door, etc.

43977 Fridge/Converter Vent Latch #E377 12



45063



JR PRODUCTS REFRIGERATOR VENT LATCHES

Twist lock latch most often used in refrigerator exterior doors but can also be used for many interior converter doors.

Vent Latch:

45063 For Thin Panel Walls (up to .057"), Pk/2 #00235 24

45064 For Thick Panel Walls (up to .162"), Pk/2 #00245 24



GOLD COAST by CAMCO REFRIGERATOR DOOR STAY

Keeps your refrigerator door propped open to improve air circulation and prevent mold build-up. Simply moisten suction cups and place curved end on the inside of refrigerator side wall, close door to meet other end of PVC rod with its suction cup sticking to the inside of the door. Adjust to preferred opening position.

48154 Refrigerator Door Stay #45641 6



CAMCO RV OAK-FINISH REFRIGERATOR BARS

Keep order in your RV refrigerator and cupboards during travel. Spring loaded bars keep items in place. Cupboard bars extend from 10" to 17"; Refrigerator bars extend from 16" to 28".

68566 Refrigerator bars oak-look, Pk/3 #43823 6

CONDOR by CP PRODUCTS MULTI-SURFACE SQUARE LEVEL



Great for use at home, or when you're on the road in your RV or camper. This multi surface level can be used on any of its edges to adjust vertical and restrictive areas. Carded.

40482 Multi-Surface Level #40482 20



In Section I:	Vacuum	Refrigerators & Accessories	Dishwasher	Ranges & Accessories	Washer/Dryer	Water Heaters	Furnace
---------------	--------	-----------------------------	------------	----------------------	--------------	---------------	---------



Both models have a reversible door hinge.

New Black door is reversible and will accept a 1/4" insert panel, positive catch door latch.



**WHIRLPOOL®
11 CU. FT.
TOP FREEZER
REFRIGERATOR**

FEATURES:

- Keep your food in sight and handy. A clear, full-width crisper allows you to store a wide array of fruits and vegetables and full-width shelves keep everything in sight.
- Humidity Controlled Crisper.



- SpillMizer™ Glass Shelves. Helps you contain leaks and spills for easier cleanup while the transparent design gives the refrigerator's interior a cleaner, brighter appearance.
- Up-Front Temperature Controls. Makes temperature management easy by placing the interior controls at the front of the refrigerator.
- ADA Compliant. The refrigerator's design allows easy access for those with disabilities.
- Interior Lighting. Illuminates the inside of the refrigerator, providing better visibility and making it easier to locate items.
- Full-Width Fixed Refrigerator Door Storage.
- Automatic Defrost System. Includes a timer, a limit switch and heater that melts away frost so you don't have to take everything out of your freezer to melt built-up ice.
- Optional Automatic Ice Maker Sold Separately (Part no. 24ECKMF).

DIMENSIONS:

61-1/2" H x 24" W x 27-15/16" Depth. Dimensions shown are for planning purposes only. For complete information, see Installation Instructions packed with product.

SPECIFICATIONS:

Performance – Freezer Capacity: 2.92 Cu. Ft. Refrigerator Capacity: 7.80 Cu. Ft. Total Capacity: 10.7 Cu. Ft.
Controls – Control Type: Mechanical.
Freezer Features – Shelf Type: Removable.
Refrigerator Features – Door Bin Quantity: 1; Total Shelves: 2; Shelf Description: FW Spillmizer; Shelf Type: Adjustable; Drawer 1: Crisper Pan.
Exterior – Door Style: Contour Smooth.

ELECTRICAL:

15 Amps. 60Hz, 120 VAC.

62242 11 Cu. Ft. Refrigerator, Black #WRT111SFAB ♦1

U-LINE ICE MAKERS



With the U-Line RV Ice Maker, there's no more inconvenience or embarrassment of running out of ice. The handsome 110-volt unit can put out over 1,000 ice cubes (20-23 lbs. worth) a day, and is also extremely energy efficient, consuming less than a 75-watt bulb in a month. Since it has a reversible-opening door and requires no drain, it's especially easy and inexpensive to install. It's completely automatic and features an interior storage bucket that holds up to 500 cubes at a time. 1/2" mounting flange all the way around. 64 lbs. shipping weight. Add 1 1/2" to depth dimension for water connection. 15-120 psi water pressure.

BLACK VINYL FRONT DOOR ICE MAKER

Customize the door of your icemaker. This stylish ice maker makes it easy for you to slide a custom insert into the slides on the front of the door. It's as easy as sliding a picture into a picture frame. Don't want a custom panel? Don't worry, the black finished background looks great all by itself. This U-Line ice maker produces an abundant supply of ice cubes in an amazingly short time: Makes over 23 lbs. of ice cubes daily from only 2-3/4 gallons of water and stores 12 lbs. of ice. It requires no drain and can be easily installed in any area (needs only a 1/4 inch outside diameter water line connection). Uses less electricity than a 75-watt light bulb. Comes with a field reversible door for left or right hinge, a black vinyl door panel, a 1/2" wide mounting flange for easy mounting in surrounding cabinets, an adjustable temperature control for adjustment of daily ice rate, corrosive and UV resistant components, see-through removable ice bucket, and a travel pin to keep door securely closed. Size: 25-1/4" H x 15-1/16" W x 17" D (w/flange) or 24-3/4" H x 13-13/16" W x 17" D (w/o flange). Weight: 66 lbs. 110/115 vac.

64434 Standard Ice Maker with new Black Vinyl Door Reversible* #ULN-B195BTP-03 1

64213 Solenoid Valve only #2552A 1

LOW PROFILE ICE MAKERS

Shorter size, big performance. Make lots of ice — fast! Short/low profile U-Line ice maker produces an abundant supply of ice cubes in an amazingly short time. Makes over 23 lbs. of ice cubes daily from only 2-3/4 gallons of water and stores 12 lbs. of ice. Requires no drain and can be easily installed in any area (needs only a 1/4" outside dia. water line connection). Uses less electricity than a 75-watt light bulb. Comes with a field reversible door for left or right hinge, a black glass door panel (**64597**), a 1/2" wide mounting flange for easy mounting in surrounding cabinets, an adjustable temperature control for adjustment of daily ice rate, corrosive and UV resistant components, see-through removable ice bucket, and a travel pin to keep door securely closed. Size: 18-7/8" H x 15-1/16" W x 24-13/16" D (w/flange) or 18-1/2" H x 13-13/16" W x 24-13/16" D (w/o flange). Weight: 67 lbs. 110/115 vac.

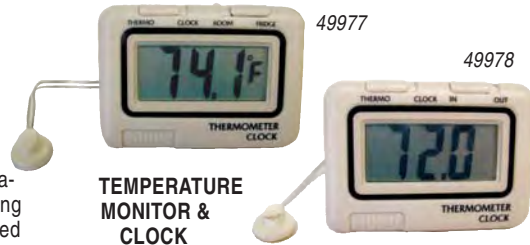
64597 Space Saving Ice Maker with Black Vinyl Door Panel #ULN-SP18B-03 1

DIGITAL MONITOR & CLOCK

REFRIGERATOR MONITOR & CLOCK

Keep track of your refrigerator temperature without opening the door and letting out all the cold air. This battery operated monitor mounts on the wall while a flat sensor runs to refrigerator. At any time you can switch to read the room temperature or turn the monitor into an easy to read digital clock. Not illuminated. Off-White. 3 1/4" L x 2 1/4" H x 1/2" D with bracket.

49977 Refrigerator Temperature Monitor & Clock #12-3020 10



TEMPERATURE MONITOR & CLOCK

Allows constant monitoring of outdoor or room temperature. Slide switch from thermo to clock and you have an easy-to-read digital clock. A simple sensor cable runs from monitor to outside. Battery operated. Not illuminated. Off-White. 3 1/4" L x 2 1/4" H x 1/2" D with bracket.

49978 Temp & Clock #12-3025 10

In Section I:	Vacuum	Refrigerators & Accessories	Dishwasher	Ranges & Accessories	Washer/Dryer	Water Heaters	Furnace
---------------	--------	-----------------------------	------------	----------------------	--------------	---------------	---------

DINOSAUR ELECTRONICS PARTS FOR DOMETIC REFRIGERATORS

TESTER FOR DOMETIC REFRIGERATOR BOARDS

A handy tool for troubleshooting newer Dometic refrigerators from the outside access panel. This tool plugs directly into the lower control module and quickly tests all functions of the refrigerator (AC/DC/GAS operation). In addition, the P-711 Exerciser will, through process of elimination, help you detect bad eyebrows and thermistors.



Compatible with the following refrigerator models: S1521, S1531, S1621, S1631, S1821, S1831, RM2607, RM2611, RM2612, RM2652, RM2807, RM2811, RM2812, RM2852, RM3607, RM3662, RM3663, RM3807, RM3862, RM3863, RM4872, RM4873, RM7030, RM7130, RM7732 and RM7832.

64898 Tester #P711 EXERCISER 1



CONTROL BOARD – MICRO P-711

Use in Dometic RM 2607, RM2608, RM 2611, RM 2812, RM 2652, RM 2852, RM 3607, RM 3807, RM 3662, RM 3862, RM 3663, RM 3863, RM 4872, RM 4873, RM 7030, RM 7130, RM 7732, RM 7832

The Micro P-711 features a temperature adjustment knob that allows you to fine-tune the temperature of units equipped with a temp selector, and allows you to choose from the full range even with fixed-temp refrigerators. It is equipped with fuse protection on the 12v DC supply, DC element circuit, and 120 v AC circuit. It keeps the refrigerator operating if the eyebrow board or communication link fails keeping food safe and cool. The thermocouple unit eliminates ground bounce problems. Works in 2-way and 3-way units with all types of eyebrow. Easily installed by working in units with the wiring kit and without the wiring kit. All connections are clearly marked on the board.

64846 Micro P-711 #MICRO P-711 1

- 2-way or 3-way operation.
- Fuse protected.
- Variable temperature adjustment for Fixed Temp refrigerators.
- CHECK light comes on after each ignition try fails to sense a flame.
- Repeats the 3 try ignition cycle at 30 minute intervals if no flame is sensed.
- DC element will drop out and the DC mode light will flash in 3-ways if the voltage level falls too low for more than 10 seconds.
- 3-yr. warranty.



**Use the 3850415.01 board only to replace previously properly installed Dometic® 3850415.01 boards; DO NOT USE 3850415.01 to replace any older Dometic® black boxes or the CDS#64846.*

67336 Dometic Replacement Board #3850415.01 REPLACEMENT 1

DINOSAUR ELECTRONICS REPLACEMENT PARTS

FOR NORCOLD REFRIGERATORS



2-way or 3-way. Operation: AC/DC/Gas. Replaces the following Norcold® part numbers: 618198, 618224, 618574, 618575, 618828, 619378. For older 900, 9100, and early 1200 series refrigerators. Just match Norcold's® board number to this board number for direct replacement.

60088 N991 Replacement Board for Norcold Refrigerator #N991 1

POWER SUPPLY BOARD FOR NORCOLD OLD STYLE

- **64871** fits 652, 662, 662IM, 682, 682IM, 6052, 6082, 6162, 6182.

64871 2-Way #61647422 2-WAY 1

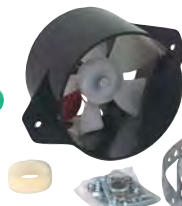


VALTERRA REFRIGERATOR FANS

FRIDGECOOL FAN

Air Circulator fan reduces food spoilage and cuts cool down time by 50%. Runs for more than 30 days on 2 "D" size batteries. Convenient easy on/off switch included.

66586 Fridgecool Fan with switch #A10-2606 6



FRIDGECOOL VENT FAN – UNIVERSAL MOUNT

"Wind Tunnel" design increases refrigerator cooling efficiency up to 40%. Fully automatic – only activates when fridge is on. Turns itself on at 100°, off at 80°. Can be mounted at the top of fridge rear compartment, or on the back of the refrigerator to blow air over the coils.

65161 Universal Mount Vent Fan #A10-2618VP 12

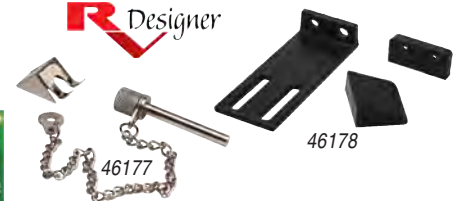


JR PRODUCTS REFRIGERATOR DOOR LOCK PIN



This universal security pin is commonly found on refrigerator doors but can also be used for window and sliding doors. Easy to install anywhere you need to keep a door or window closed during travel.

45217 Refrigerator Door Lock Pin, Packaged #20705 24



RV DESIGNER PARTS FOR REFRIGERATOR

TRAVEL LOCK LATCH

Clever latch keeps fridge doors from opening while driving. Works for single or double door fridge. 7/8" x 2". Black plastic. Screws included, Pk/2.

46178 Travel Lock Latch #H593 1

TRAVEL LOCK PIN

Pin fits in hole to lock fridge door closed while driving. Pin is 1-1/2" L. Chain & screw included.

46177 Lock Pin, Pk/1 #H591 1



CAMCO FRIDGE AIRATOR™

Cool your RV fridge evenly and keep food fresher. High-volume air circulator absorbs odors with replaceable activated charcoal filter. Battery operated.

46902 Fridge Airator™ #44123 1 S/O Replacement charcoal packs #42093



In Section I:	Vacuum	Refrigerators & Accessories	Dishwasher	Ranges & Accessories	Washer/Dryer	Water Heaters	Furnace
---------------	--------	-----------------------------	------------	----------------------	--------------	---------------	---------



NEW!



**VESTA
SPACE-SAVING
DISHWASHER**

VESTA™

Stop using paper plates and start enjoying the convenience of having a full-featured dishwasher in your RV or boat. Installing in minutes, VESTA's space-saving dishwasher fits perfectly on a kitchen counter while it's included quick-connect kit attaches it directly to the sink.

Even though the VESTA DWV322CB dishwasher saves space over other similar dishwashers, it still offers outstanding water savings and load size capabilities. Equipped with a specially designed dish rack and cutlery basket, the VESTA cleans up to six, 4-piece place settings and uses just 2.4 to 4.2 gallons of water.

The DWV322CB has 6 handy wash cycles ranging from a smart Soak cycle for dishes you plan to wash later that day to a Heavy wash for dishes with caked on food and grime. The Delay Start option lets you set a wash cycle up to 24 hours in advance, while the Speed cycle washes your dishes in less time.

Simple to use, the DWV322CB comes standard with fully electronic controls and conveniently located detergent and rinse aid dispensers that are easy to fill. Once a wash cycle begins, the LED display counts down the time remaining. When finished, an end-of-cycle signal lets you know your dishes are done.

120V/6Amp, 60Hz. 21-11/16"W x 17-1/4"H x 19-11/16"D. 1-Year Limited Warranty. ENERGY STAR. CSA/us Approved. Overflow protection. Single water inlet, internal water heater.

61206 Countertop Dishwasher
#DWV322CB 1

**WHIRLPOOL®
MICROWAVES**



**WHIRLPOOL® 1.1 CU. FT. COUNTERTOP
MICROWAVE WITH SENSOR COOKING**

KEY FEATURES: • Sensor Cooking. Take the guesswork out of microwave meals. You can cook with confidence, knowing that a built-in sensor monitors the humidity level of food for you, adjusting time and temperature as needed during the cooking process.

- 1,000 Watts Cooking Power. Our countertop microwaves provide from 700 to 1,200 watts of power, so there's one that's right for your kitchen no matter what your cooking requirements.
- Recessed Glass Turntable. • Non-Sensor Reheat, Cook, Defrost Cycles. • Add 30 Seconds. Quickly set the microwave to cook for 30 or 60 seconds at 100% power by pressing this button. Or, press it to add 30 or 60 seconds to a manual setting that is already in progress.
- Quick Touch Popcorn button. • Control Lock. Disables the control panel to avoid unintended use or other changes to your cooking settings.

ELECTRICAL: 15 Amps, 120 VAC.

DIMENSIONS:
12-5/8" H x 20-1/4" W x 16-1/8" Depth.
Dimensions shown are for planning purposes only. For complete information, see Installation Instructions packed with product.

61918 1.1 cu. ft. Countertop Microwave Oven, Black #WMC10511AB 1



**VALTERRA
OVEN
THERMOMETER**

Hangs or stands. • Accurate from 100°F to 600°F. • Stainless steel. • Position in middle of oven for most accurate temperature reading.

61978 Oven Thermometer, Carded #A10-3200VP 12



**WHIRLPOOL® 1.6 CU. FT.
COUNTERTOP MICROWAVE WITH
1,200 WATTS COOKING POWER**

KEY FEATURES: • Sensor Cooking. Take the guesswork out of microwave meals. You can cook with confidence, knowing that a built-in sensor monitors the humidity level of food for you, adjusting time and temperature as needed during the cooking process.

- 1,200 Watts Cooking Power. Our countertop microwaves provide from 700 to 1,200 watts of power, so there's one that's right for your kitchen no matter what your cooking requirements.
- Recessed Glass Turntable. • Non-Sensor Reheat, Cook, Defrost Cycles. • Add 30 Seconds. Quickly set the microwave to cook for 30 or 60 seconds at 100% power by pressing this button. Or, press it to add 30 or 60 seconds to a manual setting that is already in progress.
- Quick Touch Popcorn button. • Control Lock. Disables the control panel to avoid unintended use or other changes to your cooking settings.

ELECTRICAL: 15 Amps, 120 VAC.

DIMENSIONS:
13" H x 21-3/4" W x 17-1/4" Depth.
Dimensions shown are for planning purposes only. For complete information, see Installation Instructions packed with product.

61940 1.6 cu. ft. Countertop Microwave Oven, Black #WMC30516AB 1



Trim Kit shown with microwave (sold separately)

**NEW! 27" TRIM KIT FOR
COUNTERTOP MICROWAVE (Coast#61940)**

Gives the microwave oven an integrated look. Dim.: 19-1/8" H x 26-7/8" Width.

61942 27" Trim Kit only for Countertop Microwaves, Black #MK2167AB 1

In Section I:	Vacuum	Refrigerators & Accessories	Dishwasher	Ranges & Accessories	Washer/Dryer	Water Heaters	Furnace
---------------	--------	-----------------------------	------------	----------------------	--------------	---------------	---------



WHIRLPOOL® MICROWAVES



0.7 CU. FT. COUNTERTOP MICROWAVE OVEN

FEATURES: • 0.7 Cu. Ft. Capacity • 700 Watts Cooking Power • 10-Level Variable Cooking Power Control • Non-Sensor Cooking Cycles • Non-Sensor Reheat, Defrost Cycles • Staged Cooking • Electronic Child Lockout Feature • Removable Glass Turntable • Braille Overlays and Special Needs Material Available • Under The Cabinet (UTC) Mounting Bracket Included.

ELECTRICAL REQUIREMENTS: 15 or 20. 120. 60. AC-only. fused electrical supply is required. Grounded circuit is required. A time-delay fuse or circuit breaker and separate circuit is recommended.

DIMENSIONS: 11" H x 18" W x Depth: 12-3/8" D. Dimensions shown are for planning purposes only. For complete information, see Installation Instructions packed with product.

67441 ^{LS} 0.7 cu. ft. Countertop Microwave Oven, Black (*Not shown*)
#MT4078SPB 1



1.1 CU. FT. COUNTERTOP MICROWAVE OVEN

FEATURES: • 1.1 Cu. Ft. Capacity • 1,100 Watts Cooking Power • 10-Level Variable Cooking Power Control • Maxwave™ Cooking System • Touch Control System • Non-Sensor Cooking Cycles • Non-Sensor Reheat, Defrost Cycles • Electronic Child Lockout Feature • Staged Cooking • Warm Hold Cycle • Jet Start™ Control - 30 Seconds • Recessed Glass Turntable • Optional Trim Kit Not Available for This Model.

ELECTRICAL REQUIREMENTS: 15 or 20. 120. 60. AC-only. fused electrical supply is required. Grounded circuit is required. A time-delay fuse or circuit breaker and separate circuit is recommended.

DIMENSIONS: 11-7/8" H x 20-1/8" W x 15-1/8" D. Dimensions shown are for planning purposes only. For complete information, see Installation Instructions packed with product.

67442 ^{LS} 1.1 cu. ft. Countertop Microwave Oven, Black #MT4110SPB 1



1.5 CU. FT. COUNTERTOP MICROWAVE OVEN

FEATURES: • 1.5 Cu. Ft. Capacity • 1,200 Watts Cooking Power • 10-Level Variable Cooking Power Control • Maxwave™ Cooking System • Touch Control System • Sensor Cooking Cycles • Non-Sensor Reheat, Cook, Defrost Cycles • Staged Cooking • Electronic Child Lockout Feature • Warm Hold Cycle • Jet Start™ Control - 30 Seconds • Recessed Glass Turntable

ELECTRICAL REQUIREMENTS: 15 or 20. 120. 60. AC-only. fused electrical supply is required. Grounded circuit is required. A time-delay fuse or circuit breaker and separate circuit is recommended.

DIMENSIONS: 12-1/2" H x 21-7/8" W x 17-1/8" D. Dimensions shown are for planning purposes only. For complete information, see Installation Instructions packed with product.

67443 ^{LS} 1.5 cu. ft. Countertop Microwave Oven, Black (*Not shown*)
#MT4155SPB 1

67444 ^{LS} Optional Trim Kit for 67443, Black; For a 27" opening #MK1157XVB 1



SUBURBAN 2 & 3 BURNER STAINLESS STEEL DROP-IN COOKTOPS

Drop-in two- and three-burner Suburban RV Cooktops add compact, high-efficiency cooking performance to any motorhome, travel trailer, van or larger camper. Cooktops meet most manufacturer and installer size requirements. Suburban drop-in cooktops are designed with the same quality standards as their furnaces and water heaters. Drop-in two-burner model features 6,500-BTUH burners with front right controls. Drop-in three burner model features a 6,500-BTUH burner in front and two 5,200-BTUH burners in back with front right controls. Stainless steel top. Match-light top burners. One-piece, rattle-free grates are made of sturdy, heavy-gauge, porcelain-enameled steel. Grates remove easily for cleaning. Optional covers available.

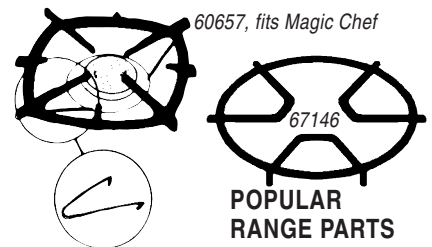
Cut-out size, 2-burner: 16-3/8" W x 11-5/8" D x 3-1/8" H; set back 3/4" from front of counter.

Cut-out, 3-burner: 18-15/16" W x 16-1/8" D x 3-1/8" H; set back 2-3/8" from front of counter.

Drop-In Cooktop:

57259 2 Burner, Stainless Steel Top, 16³/₈" W x 11⁵/₈" D x 3¹/₈" H (Cover is Mfr#2946AST; sold separately) #2937AST 1

57261 3 Burner, Stainless Steel Top, 18¹⁵/₁₆" W x 16¹/₈" D x 3¹/₈" H (Cover is Mfr#2948AST; sold separately) #2938AST 1



GRATE CLIPS

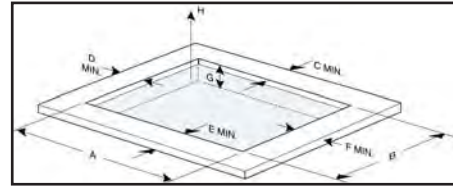
60657 Pkg. of 8 Grate Clips for Magic Chef #MAG 50-20251-1MC 1

ROUND STYLE GRATE FOR WEDGEWOOD

67146 Round Style Grate #56378 1

In Section I:	Vacuum	Refrigerators & Accessories	Dishwasher	Ranges & Accessories	Washer/Dryer	Water Heaters	Furnace
---------------	--------	-----------------------------	------------	----------------------	--------------	---------------	---------

65826 with Cover (sold separately)



ATWOOD/WEDGEWOOD VISION™ DROP-IN COOKTOPS

Stylish lightweight drop-ins designed for when weight restrictions and tight space are a concern. The two-burner features one 7200 BTU burner with a large, oval grate and one 5200 BTU burner with standard circular grate. The three-burner features one 7200 BTU burner with a large, oval grate and two 5200 BTU burners with circular grates. A cover with windguards is also available as a special order.

Description	A (in.)	B (in.)	C (in.)	D (in.)	E (in.)	F (in.)	G (in.)	H (in.)
2-BURNER DIMENSIONS								
Burner Box	16.13	11.38	—	—	—	—	—	—
Counter Top Cutout	16.25	11.5	3.75	2.63	1.5	3.38	2.81	20.25
Top	18.00	13.00	—	—	—	—	—	—
Clearance to Combustibles from Edge of Cooktop: • Sides, 1.75"L, 2.5" R; • Rear, 3.06"; • Top, 20.25"; • Front: .75".								
3-BURNER DIMENSIONS								
Burner Box	18.88	14.88	—	—	—	—	—	—
Counter Top Cutout	19.00	15.00	4.5	3.06	3.0	2.0	2.81	20.25
Top	20.50	16.75	—	—	—	—	—	—
Clearance to Combustibles from Edge of Cooktop: • Sides, 2.25"L, 1.25" R; • Rear, 3.72"; • Top, 20.25"; • Front: .20".								

2-BURNER

The two-burner features one 7200 BTU burner with a large oval grate and one 5200 BTU burner with a standard circular grate.

DV20 2-Burner Drop-In Cooktop:

- 65821 Black #56493 1
- 65833 Stainless #56494 1

3-BURNER

The three-burner features one 7200 BTU burner with a large oval grate and two 5200 BTU burner with a standard circular grate.

DV30 3-Burner Drop-In Cooktop:

- 65826 Black #56471 1
- 65835 Stainless #56472 1

ATWOOD/WEDGEWOOD RV SERIES RANGES

Wedgewood high output ranges deliver style and power to home cooking on the road. These ranges are made with a wide door for a residential look, a single grate piece which allows the cook to slide pans from burner to burner, linear valves, and individual ignitors. Additional features include: 9,000 BTU high output main burner and enhanced 6,500 BTU rear burners, centralized high output burner and improved flame distribution, spacious, high-efficiency 17" or 21" ovens, built-in broiler/toaster section, and a variety of colors.

Note: when replacing an old R series range, include the trim strip (Mfr#56188).

Description	A (in.)	B (in.)	C† (in.)	D (in.)	E* (in.)	F (in.)	G (in.)
17" Ovens	17.75	20.25	1.13 (1.75)	16	0.44	1.75	1.5
21" Ovens	17.75	20.25	1.13 (1.75)	20	0.44	1.75	1.5

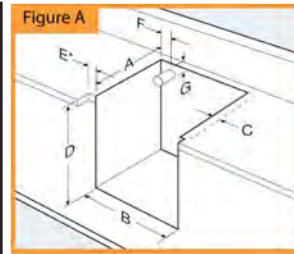
† Minimum distance to combustible wall. Sealed burner measurement shown in parentheses ().
* Only applies to products selecting option N (remove control panel notch).

17" 3-Burner Range, 52 lbs*:

- 64797 White Door #52384 ◆ 1
- 62941 Black Glass Door #52382 ◆ 1

21" 3-Burner Range, 63 lbs*:

- 64801 White Glass Door #52245 ◆ 1
- 61153 Black Glass Door, Piezo #52306 ◆ 1



*Add 5 lbs. for 17" range with glass door and 6 lbs. for 21" range with glass door



SUBURBAN RANGES

22" Suburban gas RV range offers high efficiency, well insulated oven with an especially large broiler. The tall oven heats to 450° and contains a sturdy, easy-sliding oven rack with multiple rack positions. Porcelain oven and broiler pan surfaces are smooth and rounded for easy cleaning. The piezo ignition creates a spark to light the cooktop burners. No need for matches. Turn the burner knob for gas, then turn the piezo knob to ignite the burner quickly and easily. It also features a high-output, 9,000-BTU/h front burner with linear valve. Smooth, infinitely variable flame adjusts from a gentle simmer to high heat for faster cooking. Two 6,500-BTU/h rear burners add lots of cooking capacity. One-piece porcelain-coated steel grate is more convenient for large pans or griddles. Lifts off fast for easy, quick cleaning of the entire cooktop.

- Cut-out size: 20-5/8" W x 21-3/4" H x 18-5/8" D.
- Two-year limited mfr. warranty. The optional Range Cover provides additional counter space when the cooktop is not in use. Standard bi-fold cover is available in black.

3-Burner Range, Black Top:

- 61387 **NEW!** Black Glass Door, Model SRNA3LBGE #2872A ◆ 1
- 57209 Black Textured Steel Door, Model SRN3LBBE #2870A ◆ 1
- 56986 Range Cover, Black, for SRN Series 3-Burner Range #2814A 1
- Suburban Range Replacement Parts:
- 64608 Knob, Burner (SD2-SD3) #140219 1
- 67296 Grommet (SRN3LWBE) #071087 1
- 67297 Rubber Pad (SRN3LWBE, SS 2Burner Drop-In) #140214 1
- 67298 Igniter (SRN3LWBE,) #232577 1

In Section I:	Vacuum	Refrigerators & Accessories	Dishwasher	Ranges & Accessories	Washer/Dryer	Water Heaters	Furnace
---------------	--------	-----------------------------	------------	----------------------	--------------	---------------	---------

CAMCO RV UNIVERSAL FIT STOVE TOP COVER

Protect and hide burners and add counter space in your RV. Cover acts as a splash guard between burners and wall when folded back. Flip up one side to use two burners or fold and store it away compactly when you need all four burners. Made of 20-gauge steel with powder-coated finish.



RV Universal Fit Stove Top Cover:

60067 Almond #43559 1

60065 Black #43554 1

60066 White #43557 1

MAGIC CHEF® GROMMETS

Rubberized silicone grommets protect your stove top from scratches caused by the grate. Specially sized for Magic Chef brand grates.

60068 Magic Chef® Grommets, Pk/4 #43614 50



VENTMATE REPLACEMENT 6" FAN BLADE



6" fan blades for 12-v powered roof vents and range hoods. White, impact-resistant plastic. Direction of spin is determined by looking down through the motor, at the top of the blade.

65491 Current Ventline, 3/32" Round Bore, CCW, CD/1 #65491 1



CAMCO UNIVERSAL SILENT TOP™

Silence annoying stovetop rattles while adding valuable counter space to your RV. Solid oak-finish hardwood stovetop cover hides and protects burners. Non-toxic gloss finish for extra moisture protection. (19-5/8" x 17-1/2") Patented. Includes bonus Flexible Cutting Mat.

60064 Oak Accents™ Silent Top™ #43521 2



HENG'S EXTERIOR VENT OUTLET COVER

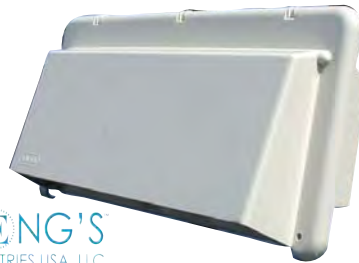
FOR JENSEN DUCTED RANGE HOODS

UV and weather resistant. Easy to install. Mounting hardware not included. Dimensions: 6" x 13". Cutout: 4" x 11".

Durable Standard Vent Cover with Damper:

66289 Bright White #J116AWH-C 60

62810 Colonial White #J116AOW-C 60



60478



JR PRODUCTS ENDURA RANGE VENTS

Guaranteed not to yellow or become brittle when exposed to the elements. Wind tested to 190 mph. Easy-to-install; push lock, one-piece damper closure with large, sturdy hinges.

Endura Range Vent, White:

60416 5/8" Flange #50015 18

60478 1-1/2" Flange #50035 18



CAMCO FLYING INSECT SCREENS - FOR STOVE

Wasps, mud dauber, birds and rodents pose a serious threat to your RV water heater, furnace and stove. They can enter through vents and openings and cause serious damage by building nests that interfere with air flow. Protect your valuable investment by purchasing and installing Camco's Flying Insect Screens. These easy-to-install screens will help ensure that your vents stay free from costly invasion by unwanted pests.

66137 ST500 Fits most RV Stoves #42147 6



SEE SECTION "A"
FOR ADDITIONAL
COOKING
PRODUCTS

In Section I:	Vacuum	Refrigerators & Accessories	Dishwasher	Ranges & Accessories	Washer/Dryer	Water Heaters	Furnace
---------------	--------	-----------------------------	------------	----------------------	--------------	---------------	---------



VENTLINE
By DEXTER

**VENTLINE
POWER RANGE HOODS**

Enclosed light for full-range surface illumination. Switches easy to reach; washable lifetime grease filter. High-volume air output; quiet motor. Pre-wired for installation. For horizontal discharge. Size: 12" x 20" X 5" high.

110 Volt Power Range Hood:

61106 Almond #PH62-20AC-1 1

60108 White #PH62-20WC-1 1

12 Volt Power Range Hood:

61107 Almond #PH21-20A-1 1

60109 White #PH21-20W-1 1

Power Range Hood Parts & Accessories:

61126 Exterior Vent with louver design, Colonial White; Cutout: 10 1/4" x 3 3/4"; Overall: 12 1/8" x 5 1/4" x 1 3/4" #V2018-02 70

69749 12V Repl. Motor Kit; Included in the kit is the VD0218 motor, motor lead wires, screws, instruction sheet and a drill template to retro-fit the VD0218 motor to the brackets used with the older motors (screw hole spacing is different) #BVD0218-00 1

60592 110 Volt Motor for range hoods, 100 cfm #BVD0278-00 1

61100 ^{LS} 120 Volt Motor for range hoods, 100 cfm #BVD0276-00 1



VENTLINE
By DEXTER

**REPLACEMENT PARTS ONLY
FOR VENTLINE
DUCTLESS RANGE HOOD**

Ventless Range Hood Replacement Parts:

66030 Pushbutton Switch
#BV0199-04 1

69749 12V Repl. Motor Kit; Included in the kit is the VD0218 motor, motor lead wires, screws, instruction sheet and a drill template to retro-fit the VD0218 motor to the brackets used with the older motors (screw hole spacing is different) #BVD0218-00 1

60592 110 Volt Motor for range hoods, 100 cfm #BVD0278-00 1

61100 ^{LS} 120 Volt Motor for range hoods, 100 cfm #BVD0276-00 1



**HENG'S
INDUSTRIES
JENSEN 12V POWER RANGE HOOD**

HONG'S
INDUSTRIES USA, LLC

Quiet axial fan draws smoke and heat. Telescoping duct with damper and louver furnished. Heavy-gauge sheet steel. Enclosed light. Easy-to-clean removable filter. Easy-to-read exterior rocker style switches: away from grease and heat. Pre-assembled, pre-wired. Interchangeable with Jensen non-power hoods. Rear wall opening guides outside wiring assist installer. 20"L x 5"H x 18"D.

60199 Range Hood with Fan and Light (Includes the J116 (Coast#62810) white outlet), Almond, Boxed #R0421200-C1C1 1

61758 NEW! Range Hood with Fan and Light, Black, Boxed #R0423500-C1 1

61759 NEW! Range Hood with Fan and Light, Stainless Steel, Boxed #R0424500-C1 1

Replacement Parts:

67249 12V Motor, with D Shaft #90037-C1 5



65499
Standard

69153
Deluxe

SPLENDIDE STANDARD VENT KIT

Ready-to-use kit includes a UV-protected, paintable louvered vent, UL-approved flexible metallic ducting and worm-driven screw clamps for a safe and easy RV dryer installation.

65499 Standard Vent Kit, Paintable #V1422 1

65594 4" x 25' Flex-Metal Ducting #013-3100-M 6

SPLENDIDE DELUXE VENT KIT

Deluxe vent kit with smooth, upgraded vent cover for high-end RV dryer installations. Includes flexible metallic ducting, worm-driven screw clamps, and a flap/insect seal. Vent cover available in paintable white or automotive chrome finish. Fits models WD2100XC/XCP, WD2000S and AS66VX.

69234 Deluxe Dryer Vent Kit with Paintable White Vent Cover #VID403A 1

69153 Deluxe Dryer Vent Kit with Chromed Vent Cover #VID403AC 1

**SPLENDIDE
DRAIN-A-
WAY™ PAN**

For Built-In
Installations



1/2-ID drain fitting, removable facade. Screws and Butyl tape included. Size: 1-1/2"H x 24"W. Fits models WD2100XC/XCP, WD2000S and WDC7100XC .

65408 Drain Pan 23-3/4"D #PI24 1

**SPLENDIDE
SECUREFIT™
BRACKETS**



Prevent the appliance from shifting side-to-side or front-to-back in RV or Marine applications. Heavy duty galvanized brackets hook around the two front level legs and secure to the floor with the included self-tapping screws.

66138 SecureFit™ Brackets #MK01 1



**EXTERIOR
VENTS
FOR VENTLINE
DUCTED
RANGE HOODS**

64357,
61898

VENTLINE
By DEXTER

61126

Weatherproof outside vent features a lockable damper, heavy styrene construction and a 1 3/4" inlet flange. Rough opening is 3 3/4" x 10 1/2". Overall size 11 5/8" x 5 9/32".



Horizontal Outside Vent:

64357 Colonial White #V2111-11 24

61898 Polar White #V2111-13 24

Louvered design. 1-3/4" inlet size. Durable injection molded plastic. Colonial white.

61126 Exterior Vent with louver design, Colonial White; Cutout: 10 1/2" x 3 3/4"; Overall: 12 1/8" x 5 1/4" x 1 3/4" #V2018-02 70