

In Section L:	Fresh Water Line	Filters	Winterizing	Pumps	Faucet & Shower	Sink & Drain	Holding Tanks	Drain Valves & Fittings	Drain Hose	Chemicals & Toilets
---------------	------------------	---------	-------------	-------	-----------------	--------------	---------------	-------------------------	------------	---------------------

NON-TOXIC RV ANTI-FREEZE

Non-toxic antifreeze protects fresh water plumbing system on trailer or boat. Made of propylene glycol. 1 gallon containers.



Non-Toxic
-50° Anti-Freeze:

24181 30% Propylene Glycol, Cannot be Diluted (Image may differ. Not for sale in Canada) #STA-SAFE -50 ONE ◆ 6

Made of Ethanol, 3.78L Containers:

25891 -50°C, Ethanol Base, Cannot be Diluted #15-334 4

RV POTABLE WATER PUMP by WFCO

POWER DRIVE SERIES ONE



- Enjoy steady and reliable water pressure for the entire RV. • Self priming and dry running.
- Pump rated to deliver 3.0 GPM. • Same foot print for easy and direct replacement of most RV water pumps. • Patented four chamber design improves efficiency while maintaining stable water pressure. • Features a sealed motor with corrosion resistant materials for extremely quiet operation. • UL® cUL® Listed.
- Size: 7.65" x 4.35" x 4.35"

20396 RV Water Pump, 3GPM #PDSIRV25 6

SHURflo



SHURflo DRILL PUMP

Easy to use; 1/4" shaft fits standard drill. Self-priming to 8 feet vertical, 25 feet horizontal. Pumps liquids 40°F-120°F. 3/4" male garden hose ports. Buna impeller and lip seal.

Attaching to any standard drill motor, the drill pump has a variety of fluid transfer uses. Ideal to pump water from appliances, sinks, toilets, or drums. 1/4" oil probe easily allows the transfer of oil from cars, boats, small engines and equipment. Not intended for use with flammable liquids or in flammable environments.

25948 Drill Pump #3010-000 6

Revolution™

4008 FRESH WATER PUMP
SHURflo
REVOLUTION™
4008 SERIES PUMPS

Mounts in any position.



SHURflo's New Revolution™ fresh water pump design was created with a unique one-piece diaphragm and internal by-pass, assuring long life and top performance in all plumbing systems. Designed as the next legendary pump to exceed the expectations of our customers, the Revolution™ pump is constructed for high flow demand, low noise and no rapid cycling. SHURflo's quality reputation has been built on the reliability and dependability of every pump we build. The Revolution™ fresh water automatic demand pump is super quiet, thermally protected and can run dry without damage.

Order #	Mfr. #	Voltage	Dimensions	Flow Rate	Amps (Max)	Shut-Off Pressure
20112	#4008-101-E65	12 VDC	4.90" x 8.10" x 4.30" (125 x 206 x 110mm)	3.0 GPM (11.4 LPM)	7.5	55 PSI (3.7 BAR)



JABSCO® MULTIPLE OUTLET AUTOMATIC 12V WATER SYSTEM PUMP

- Self priming up to 10 ft. • Easy installation with snap-in ports for 1/2" ID hose or 1/2" Qest threads. • Vibration and shock reducing bumpers. • Run-dry ability. • Pressure switch cut-in 15 psi/cut-out 25 psi. low pressure, or cut-in 20 psi/cut-out 40 psi high pressure.
- Thermal overload protection automatically stops motor should it overheat due to overload, with auto re-start feature. **Par-Max 3** provides up to 3 outlets with a 3.5 gpm/13.2 lpm. 4.75" H x 4.24" W x 9.00" L.

28798 Water System Pump 3.5 GPM #32600-0092 6



FLOJET AUTOMATIC WATER SYSTEM PUMP

2.9 gpm (10.1 lpm) TRIPLEX DIAPHRAGM SERIES WITH QUICK-CONNECT FITTINGS AND LOW CYCLING BY-PASS

FEATURES: Self priming. • Dry running. • Soft, noise absorbing mounts. • 1/2" snap-in port fittings. • Corrosion-resistant materials. • Smooth operation without accumulator tank. • Built-in pulsation eliminator. The 12V replacement RV water system pump draws 7.0 amps max., a Santoprene diaphragm, and EPDM rubber valves. Overall 9.035" L x 4.240 W x 4.263 H.

28300 Automatic Water Pump System #03526144A 6

SHURflo AQUA KING™ MINI 1.0 PUMP

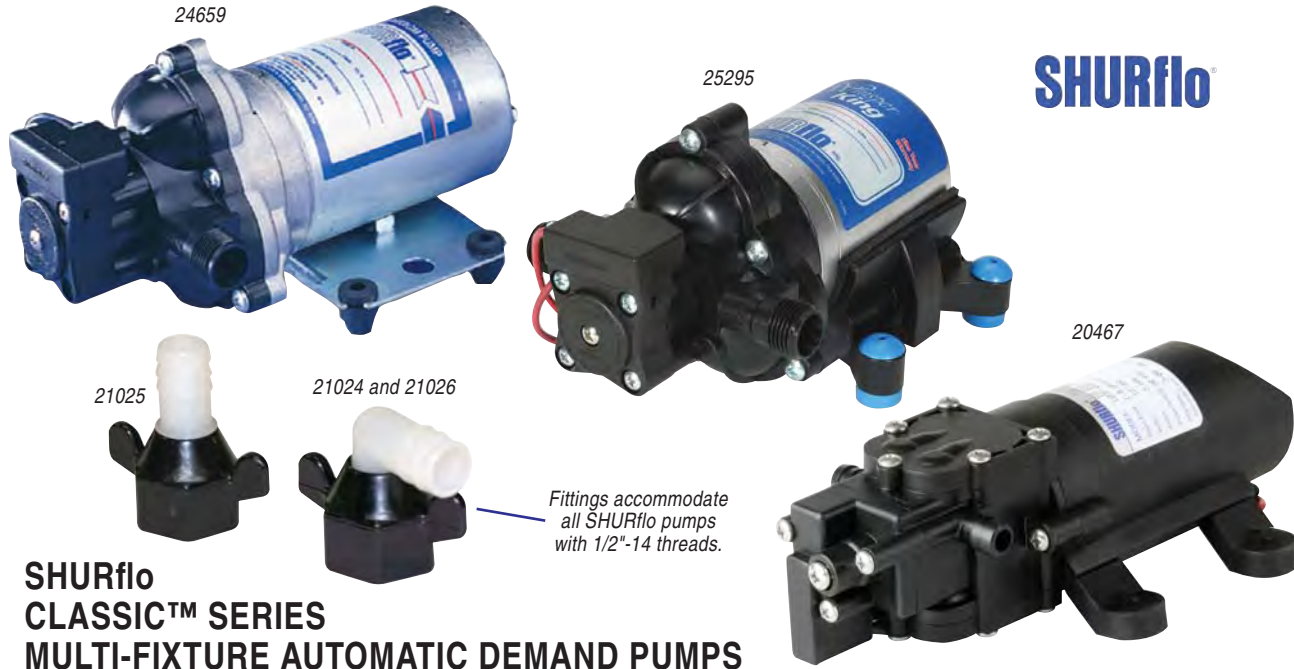


The SHURflo® Aqua King™ Mini 1.0 pump delivers quiet operation and smooth performance while providing the ultimate in durability and reliability. This 12 VDC pump is designed and built for single fixture fresh water delivery applications.



Order #	Mfr. #	Voltage	Dimensions	Flow Rate	Amps (Max)	Shut-Off Pressure
20111	#1901-0013	12 VDC	6.40" x 3.20" x 4.50" (162 x 81 x 114mm)	1.0 GPM (3.8 LPM)	3.0	30 PSI (2.0 BAR)

In Section L:	Fresh Water Line	Filters	Winterizing	Pumps	Faucet & Shower	Sink & Drain	Holding Tanks	Drain Valves & Fittings	Drain Hose	Chemicals & Toilets
---------------	------------------	---------	-------------	-------	-----------------	--------------	---------------	-------------------------	------------	---------------------



SHURflo CLASSIC™ SERIES MULTI-FIXTURE AUTOMATIC DEMAND PUMPS

These legendary pumps have set the standard for the RV Industry. SHURflo's 2088 pumps are equipped to deliver high performance and reliability every time they are used. SHURflo's potable water pumps operate three independent pumping chambers which allow the pump to self-prime and lift water up to 12 feet. With smooth flow and uninterrupted operation, the Classic™ Series pumps include a built-in check valve to prevent back flow into the tank. Each pump features an adjustable switch and has the capability to run dry without damage to the pump or motor.

Name	Order #	Mfr. #	Voltage	Dimensions	Flow Rate	Amps (Max)	Shut-Off Pressure
Premium Plus Pump	24659	#2088-453-444	12 VDC	8.60" x 5.00" x 4.45" (218 x 127 x 113mm)	3.5 GPM (12.5 LPM)	5	45 PSI (3.1 BAR)
SHURflo Whisper King™	25295	#2093-204-413	12 VDC	7.75" x 5.00" x 4.45" (197 x 127 x 113mm)	2.0 GPM (7.5 LPM)	5.5	30 PSI (2.1 BAR)
SHURflo Park Model Pump	20240	#2088-492-444	115 VDC	8.70" x 5.00" x 4.40" (221 x 127 x 113mm)	3.3 GPM (12.5 LPM)	0.9	45 PSI (3.1 BAR)

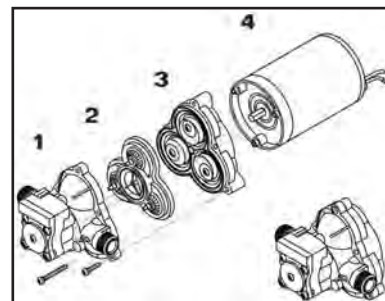
SLV SINGLE FIXTURE AUTOMATIC DEMAND PUMP

This compact automatic demand fresh water pump offers durability and dependability making it ideal for low volume, intermittent duty applications. The 105 pump self-primers up to 2.5 vertical feet while delivering over 1.0 GPM. A 12 volt low power consumption motor, equipped with thermal protection and long life pressure switch rated to 30 PSI, provides high pump performance and reliability

SLV (OEM only)	20467	#105-013	12 VDC	6.82" x 3.94" x 2.45" (173 x 100 x 62 mm)	1.0 GPM (3.7 LPM)	2.5	30 PSI (2 BAR)
----------------	--------------	----------	--------	----------------------------------------------	----------------------	-----	-------------------

PUMP REPAIR & REBUILD KITS (For 2088/2093 Series)

Name	Upper Housing (1)	Valve Assembly (2)	Drive Assembly (3)	Motor (4)	Pump Head Kit (5)	Check Valve (Not shown)
Premium Plus Pump (Coast #24659)	24428	24429	24934	94-11-173-01	24542	24431
SHURflo Classic™ Pump (Coast #20000)	24428	24429	94-238-03	94-11-261-00	94-236-21	24431
SHURflo Whisper King™ (Coast #25295)	94-231-24	24429	94-238-05	94-11-192-00	94-236-05	24431
SHURflo Park Model Pump (Coast #20240)	94-231-24	94-232-04	94-238-03	94-11-150-10	94-236-21	24431



Wingnut Swivel, Nylon:

21025 1/2"-14 NPT(F) x 1/2" Barb, Straight Fitting*
#244-2926 1

21024 1/2"-14 NPT(F) x 1/2"-14 NPT(M), Elbow Fitting
#244-3366 25

21026 1/2"-14 MPT(F) x 1/2" Barb, Elbow Fitting*
#244-3926 25

* Pump head fittings included with each pump.

SHURflo PUMP SILENCING KIT

Connects to the inlet and outlet of your water pump to silence unwanted pump noise while reducing water hammering. Kit includes 2 ea 36" soft tube risers and 2 ea 1/2" male connectors for connection to any RV pump.

28162 Pump Silencing Kit #94-591-01 1



In Section L:	Fresh Water Line	Filters	Winterizing	Pumps	Faucet & Shower	Sink & Drain	Holding Tanks	Drain Valves & Fittings	Drain Hose	Chemicals & Toilets
---------------	------------------	---------	-------------	-------	-----------------	--------------	---------------	-------------------------	------------	---------------------



THE RV WATER SYSTEM THAT FUNCTIONS JUST LIKE AT HOME!

AQUAJET VARIABLE SPEED RV WATER PUMP

The Aquajet RV pump employs state-of-the-art electronics to automatically control motor speed—the pump actually adjusts its speed as you open and close water fixtures. Aquajet's soft start feature eliminates annoying rapid cycling, and its exclusive 5-valve design can deliver twice the flow and pressure of conventional RV industry pumps. • **Greater flow**— The Aquajet automatically overcomes pressure drops typically caused when multiple fixtures operate at the same time. Aquajet's patented 5-chamber design displaces substantially more water per motor revolution than typical 3- and 4-chamber models currently used in the RV industry, making it one of the highest-flow diaphragm pumps available. • **Positive shut-off** at 75-85 psi, to keep up with today's sophisticated filtration systems and extensive plumbing systems. • **Silent operation**— At performance levels similar to competitive pumps, the Aquajet will be as much as 90% quieter, due to slower speed and superior hydraulic energy transmission. • **Smoother flow**— Aquajet's patented variable speed controllers, with additional "smart" features, eliminate all rapid cycling within normal flow ranges. The innovative 5-chamber construction, including the patented screw-free diaphragm, minimizes pulsation found in other pumps. • **Longer switch life**— Electronic control circuits and integral pressure switch minimize switch arcing during starts and stops. • **Easy installation**— Universal mounting option allows easy retrofits for virtual plug-and-play performance. • 2-year mfr. warranty. • **Fittings**— Pump includes 2 quick connect fittings with 1/2" male thread size to fit standard pump filter and other industry standards. • **Safety features**— The Aquajet includes valuable safety features not found on other pumps, including low voltage protection (to protect the pump from weakened battery power conditions) and a maximum pressure bypass (to protect the coach's plumbing system from excessive pressurization).

ES "EFFICIENCY SERIES" FOR ANY RV

The ES brings variable speed technology to virtually any RV water system. Smaller coaches can be upgraded with the ES, because this pump has been specifically designed for after market installations. **Powerful Flows** — The ES delivers

a 3.5 gpm flow rate, higher than nearly anything else for the RV industry. Reduced power consumption helps ensure compatibility with existing electrical systems. **Silent Operation** — The ES version is even quieter than the Aquajet RV version. The patented, variable speed controller and "soft-start" features eliminate most cycling related noises. **Easy Installation** — Lower amperage draws eliminate the need to use electrical relays, etc., regardless of current electrical configurations. Installation is simplified to the point of true "plug-and-play performance."

AQUAJET PUMP SPECIFICATIONS

Motor:	12VDC, permanent magnet, totally enclosed, non-ventilated
•Type	
•Temp Limits	Capable of sustaining continuous running for 1 hour (RV) or more (ES) before auto reset thermal shut-off.
Speed Controller	Factory set 10-Amps & 6.5-A (RV & ES series). Thermally protected. Automatic reset.
Pump Design	5 chamber diaphragm pump, self-priming, can run dry
•Pump Housing	Polypropylene Material
•Controller Housing	Nylon
•Valves	EPDM
•Diaphragm	Santoprene
•Fasteners	Stainless steel
Liquid Temperature	140°F (60°C) max.
Pump Certifications	IAPMO, NSF
Priming Capabilities	13 feet (RV), 10 feet (ES)

Aquajet Variable-Speed Water Pump:

27558 55 Aquajet ARV, 10 Amp Water Pump
#55-AQUAJET ARV 12

27617 55 Aquajet AES, 6.5 Amp Water Pump
#55-AQUAJET AES 6

Replacement Parts for 550 Series Pump:

27680 Fitting QTS 556S, Set/2
#QTS 556S 1



The new Charge n' Flow pump is rechargeable, submersible, and is designed for a wide variety of applications, both onboard and ashore.

FLOJET® ITT FLOJET CHARGE N' FLOW PORTABLE PUMP KIT



Charge N' Flow is the first portable pump of its kind to include three convenient power options making pumping on the go both easy and flexible. Just Charge and Pump! It's capable of pumping hot or cold freshwater, seawater, antifreeze and even diesel. Because of its portability, it is also ideal for many household applications. The kit comes complete with a 12 volt 280 GPH pump, eight feet of hose, spray nozzle, enclosed battery, AC battery charger, battery clip adaptor, and a vehicle power adaptor. It also includes a filter for use in submersible mode, or when the filter is removed, the pump can be used in line. The pump is compact, only 5.5 inches tall and 1.5 inches in diameter. It can handle up to 100 gallons of water per charge. When connected to a car battery, it can pump endless amounts of water!

Other Specifications: Charge Time: 10-12 Hours; Case Dimensions: 8.5" x 12" x 4.25"; Hose Outlet: 1/2"; Pressure: 11 PSI; Pump Materials: Acetal; Amp Draw: 12.0 V @ 2.0 Amps; Fuse Size: 5.0 Amps; Max Head (Height): 26' @ 12 V; Battery: 2000 mAh "AA" Ni-MH x 8 cells, Included with Kit.

Multiple Uses for Indoor & Outdoor.

The charge n' Flow submersible pump is ideally suited for pumping fresh and sea water or diesel, diesel refuelling and transfer, home & garden, plumbing, windshield fluid transfer, camping & kayaking, washdown for cars, RV, anchors and boats, bilge or storm water emptying.

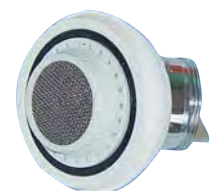
87255 Charge n' Flow Portable Pump Kit
#RP280KR 4

FASTENERS UNLIMITED SWIVEL SPRAY AERATOR

Deluxe combination faucet aerator/spray unit.

Patented diaphragm action automatically returns spray to aerated stream position when water is turned off. Swivels 360°. Dual thread 15/16"-27 and 55/64"-27 for use on faucets with inside or outside threads.

40536 Swivel Spray Aerator, Plastic/Brass #01795 g



SHURflo 4048 HIGH FLOW MULTI-FIXTURE AUTOMATIC DEMAND PUMP



The next pump in the by-pass Flow Reaction Technology Series, this pump has a unique one-piece diaphragm and internal by-pass to assure smooth flow, long life and top performance in any plumbing system. Designed and built for high flow, low noise, smooth flow with no rapid cycling and SHURflo reliability, this fresh water demand pump is quiet and can run dry without damage. Mounts in any position. This pump is designed to replace both the 4900 and 5900 Smart Sensor series products.

- Smooth Flow
- Reduced Cycling with Flow Reaction Technology™
- Modern 'green' design for reduction of hazardous waste and power consumption
- 4 GPM and 55 PSI high performance
- Automatic thermal overload protection
- Runs dry without damage
- Built in check valve prevents backflow
- Dry primes to 6 vertical feet
- Automatic demand
- 4900 & 5900 Smart Sensor Replacement (Coast #27681 and 28260)
- 2-Year Limited Warranty
- Meets CSA, CE,e-Mark and C-Tick standards.

20466 4048 High Flow Multi-fixture Automatic Demand Pump #4048-153-E75 12



4 GPM,
12VDC,
55 PSI,
10 Amps



SHURflo EXTREME™ SERIES HIGH FLOW STRAINER



Keep your Smart Sensor™ 5.7 pump flowing strong by protecting it from debris in the water. SHURflo highly recommends the use of the Extreme™ Series High Flow Strainer. Engineered to complement the Smart Sensor's higher performance, the High Flow Strainer is easy to install, and even easier to clean.

27894 High Flow Strainer (for Coast#27681) #254-266 24

SHURflo ACCUMULATOR TANK



Pre-charged accumulator tank controls water pressure; reduces cycling pulsation and harmful pressure spikes while minimizing power usage. Quiet accumulator mounts in any position, and is compatible with hydraulic shut-off valves. Internal bladder keeps air from dissolving into the water. Pre-charged pressure is 30 psi; maximum operating pressure is 125 psi. The 1/2" x 14 MPT x 2 liquid inlet and outlet ports are interchangeable.

24562 Accumulator Tank #182-200 12



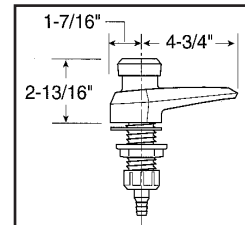
Eliminates water pump noise!

VALTERRA RV PUMP KIT



These flexible high-pressure pigtails absorb the initial surge of pressure when your pump cycles on and off eliminating noises like water hammer associated with your rigid fresh water plumbing. Includes two high-pressure hoses 1/2" x 36" and two nylon fittings for adapting female threaded fittings.

20083 RV Pump Kit #P23512PB 6



ATTWOOD 2-WAY FAUCET/HAND PUMP WITH BARBED FITTING

Works as a dependable easy-to-use hand pump that brings water immediately or as a standard faucet. Use with 1/2" pipe, female thread fitting. 3" H from base to top.

763345 2-Way Faucet #6143-1 24



28081

28080



SHURflo EXTREME™ SERIES PUMP FITTINGS

Quick connect/disconnect fittings to help you customize the installation of your Smart Sensor™ 5.7 pump. Use to adapt Extreme Series pump (Coast #27681) to non-standard applications.

1/2" Barb Elbow Fittings:

28081 CD/2 #94-615-00 1

1/2" Barb Straight Fitting:

28080 CD/2 #94-615-01 1

PAR PUMP & FAUCET

Economical centrifugal pump is whisper quiet and delivers a generous 1 gpm flow at the lowest current draw. Water may "free-flow" through pump which mounts directly at output port on most water tanks. 12V; approx. 1.6 Amps. Faucet includes switch. Both faucet and pump have 3/8" barb fittings.

749055 PAR 12V Pump and Faucet #42530-0000 12

753209 12V Pump Only, Black #42510-0000 12

20719 Faucet Only, White #42520-0000 1





20231



20233

LEISURE COMPONENTS PRODUCTS

TRIPLE ACTION HAND PUMP AND WATER FIXTURE

Combo Hand Pump mounts above the counter; **Low Boy Hand Pump** fits down into counter top. Both feature 3-way action: • Full stroke of the handle delivers a constant high volume water flow from the diaphragm hand pump. • Finger tip lift of the handle to the up position activates a single-fixture electric pump. • Finger tip push of the handle to the down position delivers a steady flow of water from a city water hook-up. Either can be set up to perform any combination of the above functions. **20231** is 4" x 4" x 2" H; **20233** is 4" x 4" x 2½" H. **Repair kit** for all #131 models includes a spout seal, seal washers, washer spacer, retainers, seal-poppets, plunger, diaphragm, diaphragm support, washer and screw, gasket, and spring. Completely re-builds all #1311 models.

Triple-Action Hand Pump:

- 20231** Combo Pump #131-1 6
- 20233** Low Boy Pump #131-4 24
- 25096** Hand Pump Repair Kit for #131 Models #199-9 6



HAND PUMP

Combination hand pump and city water. Just a touch of the finger brings a steady flow of water. Housings are tough, easily cleaned molded ABS. Spouts are chrome plated brass.

- 27163** Manual Low Boy #131-5 24
- 25096** Hand Pump Repair Kit for #131 Models #199-9 6



VALTERRA ROCKET HAND PUMP

Special prime-lock feature makes this pump lock in the off position...eliminates need to prime before use. High flow piston action design.

- 20345** Hand Pump, Chrome (Not approved for sale in CA and VT) #RP800 12



SHURflo SINGLE CONTROL ELECTRIC* FAUCET

SHURflo's finely crafted electric faucet for use in single fixture applications. This faucet has 3-direction 360° rotation and its superior valving offers adjustable flow rates with a pump or city water system. Integral 12V switch. For pressures up to 87 psi (6 bar). Rugged ABS construction. 1-yr. limited mfr. warranty. 3 amps max. White.

- 25800** Single Control Electric Faucet #94-009-10 6

20165



20166

ZEBRA RV ACCESSORIES "FUMP" COMBO WATER PUMP & FAUCET



For marine, RV and van use. When using tank water activate handle in upright position, using short strokes. When using city water, move handle down slowly to open CW valve. Hold in this position for quick use. Press down completely to lock for continuous city water flow. Handle has lock position for traveling, to prevent tank drain. Packaged.

Combo Water City Pump & Faucet:

- 20165** Colonial White #R3700-CW 12
- 20166** Polar White #R3700-PW 12



PHOENIX REPLACEMENT PARTS



STEM & BONNET ASSEMBLIES

- 23384** Stem and Bonnet Assembly for Exposed Fitting, Right-or Left-Hand, for Use with Metal Lever Handles, CD/2 #9-40-5-ORLH 10
- 21917** Stem and Bonnet Assembly for Faucets with Plastic or "Y" Handles, CD/2 #9-41-5-0 10
- 21925** Stem & Bonnets for All Concealed Fittings, CD/2 #9-61-5-0 10

PHOENIX CARTRIDGES

Stop those leaks! Replacement cartridge fits all Phoenix washerless faucets.

- 24531** Cartridges, CD/2 #9-P42 10

RENEWABLE SEATS

- 21911** Renewable Seats, CD/2, For all exposed fittings #9-40-1 10
- 20341** Renu seat for brass garden tub filler #9-38-1 10

SEAT WASHERS

- 22744** Washers, CD/10 #9-40-3-2 10

CLEAR ACRYLIC HANDLES



- 22745** Clear Acrylic #9-40-9-16C 10
- 20342** Large acrylic handles for garden tub fillers #9-38-9-16HC 1

Replacement handle, clear, hot or cold, with button and screw. Fits Phoenix #38 garden tub filler.

- 24518** Clear H or C Handle with button and screw, Bag/1 #6-38-9-16A 10



- 22748** Riser Spud & Nut, CD/1 #9-45-13-0 10
- 22746** Vacuum Breaker, CD/1 #9-412-13 10
- 21907** "D" Spud for Brass or Plastic Underbody, CD/1 #9-35-13 10
- 22747** "D" Spud for Lavatory Diverter only, CD/1 #9-44-13 10

PHOENIX IS CHANGING EVERYTHING.....

The biggest faucet innovation in decades is available from Phoenix Products. We pioneered the use of plastic in faucets. And now we're excited to introduce the next big leap in faucet technology.

HYBRID FAUCETS



**METAL TOUGHNESS
PLASTIC ECONOMY**

The Best of Both Worlds

- Plastic resin and metal powder combine to make a tough new poly-metal material
- Plastic makes it corrosion resistant against hard water and harsh chemicals
- Metal powder creates durable, high performance parts
- Single piece molded underbody ensures no leak points
- Made from lead free, eco friendly materials
- Sturdy brass encased shanks
- EPA WaterSense certified means up to 45% water savings
- Green manufacturing practices mean environmentally friendly processes free of toxic chemicals



3 Hole or single Hole Mount in One Box!

This single handle pull out has a sturdy, flexible 56" hose that allows smooth, effortless pull out and a stream or spray button. It's designed to be mounted as a 3 hole or single hole and comes with hardware for both. Extended length supply lines make hook up fast and easy. Ceramic disc cartridge for years of reliable operation.

20266 Chrome #SP2104-01-02-1 10

20271 Brushed Nickel #SP2104-06-02-1 10

20602 **NEW!** Rubbed Bronze #SP2104-08-02-1 10

20597 **NEW!** White #SP2104-07-02-1 10

This single handle lav has flowing lines that add a tall, sculpture-like touch to any bath. The smooth rounded surfaces make it easy to clean and keep shining like new. Ceramic disc cartridge will deliver years of reliable operation.

20300 Chrome #S1205-1 10

20301 Brushed Nickel #S1265-1 10

20603 **NEW!** Rubbed Bronze #S1285-1 10

The two handle lav has flowing lines that add a low profile arc to the bath. The smooth rounded surfaces make it easy to clean and keep shining like new. 1/4 turn washerless cartridges for years of smooth operation.

20311 Chrome #RB4602-1 10

20319 Brushed Nickel #RB4662-1 10

The elegant two handle kitchen model displays a sweeping hi-arc spout for easy pot filling and sleek, sturdy wing like lever handles. 1/4 turn washerless cartridges for years of smooth operation.



20281 Chrome #RB5602-1 10

20284 Brushed Nickel #RB5662-1 10



20300

20603

20311

**YOU WON'T BELIEVE ITS NOT METAL
ORDER YOURS TODAY AND SEE FOR YOURSELF**

PHOENIX[®]
FAUCETS

FAUCETS & ACCESSORIES

PLUMBING

In Section L:	Fresh Water Line	Filters	Winterizing	Pumps	Faucet & Shower	Sink & Drain	Holding Tanks	Drain Valves & Fittings	Drain Hose	Chemicals & Toilets
---------------	------------------	---------	-------------	-------	-----------------	--------------	---------------	-------------------------	------------	---------------------

All DuraPro™ and Gelcon underbody faucets are AB1953 and ACT193 compliant.
All Phoenix Faucets have a limited lifetime warranty.



HYBRID FAUCETS (... continued)

**3 HOLE OR SINGLE HOLE
MOUNT IN ONE BOX!**

Single handle 8" kitchen faucet. Design and mounting hardware accommodates 1 or 3 hole mount options. Extended length supply lines. Hybrid underbody. Ceramic disc cartridge. 1/4 turn washerless cartridges. Lever handle.

20273 Chrome #S2102-01-021 10

20275 Brushed Nickel #S2102-06-02 10



28669 **3 HOLE MOUNT
PULL-OUT
FAUCETS**

- Precise shutoff Ceramic Disk Cartridge.
- Light weight. • Easy Grip Wand. • 56" pull-out hose. • Smooth action loop handle. • Spray selection button for aerated stream or vegetable spray. • Sturdy metal construction. • Contains ceramic disc. • 3-1/4"H x 9-5/8"W x 17"L.

3 Hole Pull-Out Faucet:

28669 Brushed Nickel
#SW2103-06-011 10

20049 Brushed Nickel (Approved for sale in CA and VT) #SW2103-06-01NLI 10

28670 White #SW2103-07-011 10

4" BAR FAUCETS

- Bar Faucet, 4" Centers.
- Contains plastic stem and bonnets. • Chrome finish.

23398 LS Brass Underbody, With 9" Spout #5932-1 10

22730 DuraPro™ Underbody, With 6" Spout #P5632-1 10



28725 **8" LEDGE FAUCET**

- Ledge faucet, 8" centers, 8" spout. • Contains plastic stem and bonnets. • Chrome finish.

28725 DuraPro™ Underbody, Decorative Spout Less Spray #P5033A-1 10



22729 **4" LEDGE FAUCETS**

- With decorative spout. • Contains plastic stem and bonnets. • Chrome finish.

21710 Brass Underbody #5433A-1 10

22729 LS DuraPro™ Underbody #P5433A-1 10

8" KITCHEN FAUCETS

With high-arc spout.



28733 LS Brass Underbody, Brass Compression Stems, Chrome Finish and Lever Handles #5014A-T411 10

28740 LS DuraPro™ Underbody, Brass Stem & Bonnets, Chrome Lever Handles #P5004A-T441 10

20710 **NEW!** DuraPro™ Underbody, Plastic Stem & Bonnets, Chrome Lever Handles #P5034A-T441 10



20344 **AERATOR**

20344 Chrome Aerator #9-50-19C 10

SWIVEL AERATOR

20213 Swivel Aerator; Adapts onto any standard kitchen spout #9-R50-19S 10



**Trust the Industry Leader
in Faucets Designed for
RV, Manufactured Home, and
Marine Lifestyles**

**Celebrating 35 Years With The
Largest Selection of Models
Made in the U.S.A.**



**Rely on Phoenix to
Deliver Your Freshwater**

- High quality faucets **MADE IN USA** or supplied by foreign partners.

- Metal and plastic products meet industry standards for performance, conservation and purity.

- Complete parts program
- Lifetime limited warranty

- Personal customer service from our Ohio plant





**Economical, Reliable
Faucets For Your
Kitchen, Lav and Bath**

**From the Proven Industry
Leader in RV, Manufactured
Home and Marine Fixtures**



Catalina

From the Company You Trust

**Faucets from Phoenix are
designed to meet the special
needs of the RV, Manufactured
Home and Marine lifestyle**

**All Phoenix faucets must pass
rigorous testing and quality
standards and are backed by our
Lifetime Limited Warranty**



All Catalina faucets are AB1953 and ACT193 compliant. All Phoenix Faucets have a limited lifetime warranty.



**PHOENIX FAUCETS –
CATALINA SERIES**

Two handle 4" diverter lavatory
faucet with a D-spud for
attaching a hand held shower.
With Spinweld Underbody.

- 20434** Brushed Nickel #R4463-I 10
20604 **NEW!** Rubbed Bronze #R4484-I 10
28525 White #R4477-I 10



Two handle
4" lavatory faucet.
With Spinweld Underbody.

- 20441** Biscuit #R4099-I 10
20436 Brushed Nickel #R4063-I 10
28518 Chrome #R4003-I 10
20607 **NEW!** Rubbed Bronze #R4084-I 10
28524 White #R4077-I 10



Two handle 4" shower valve. Vacuum breaker for attaching a hand held shower.

- 20437** Brushed Nickel, Spinweld Underbody #R0463-I 10
28517 Chrome, Spinweld Underbody #R0403-I 10
20454 Rubbed Bronze, Spinweld Underbody #R0484-I 10
28523 White, Spinweld Underbody #R0477-I 10



Two handle tub
filler with diverter
and D-spud for
attaching a hand held shower.
With Spinweld Underbody.

- 20442** Biscuit #R4799-I 10
20439 Brushed Nickel #R4763-I 10
28520 Chrome #R4703-I 10
20606 **NEW!** Rubbed Bronze #R4784-I 10
28526 White #R4777-I 10



In Section L:	Fresh Water Line	Filters	Winterizing	Pumps	Faucet & Shower	Sink & Drain	Holding Tanks	Drain Valves & Fittings	Drain Hose	Chemicals & Toilets
---------------	------------------	---------	-------------	-------	-----------------	--------------	---------------	-------------------------	------------	---------------------

All Phoenix Faucets have a limited lifetime warranty.

PHOENIX FAUCETS – CATALINA SERIES (... continued)



20445

8" KITCHEN FAUCET

20445 Catalina 8" Kitchen Faucet, Standard Spout, Chrome with Smooth Spout Nut for easy cleaning, Spinweld Underbody
#R5204-I 10



20447



20446

STANDARD SPOUT

Two handle 8" faucet. 8" D-spout. With Spinweld Underbody.

20432 Brushed Nickel #R5063-I 10

28521 Chrome #R5003-I 10

28528 White #R5077-I 10



20432



28521



28528



20609

4" LAVATORY FAUCET - HI-ARC SPOUT

Catalina 4" Lavatory Faucet with hi arc spout and sculptured handles.

20447 Brushed Nickel #R4160-I 10

20446 Chrome #R4100-I 10

20609 **NEW!** Rubbed Bronze #R4180-I 10



20440

20433

28522

28529

HI-ARC SPOUT

Two handle 8" faucet. Hi-arc spout for easy pot filling.

20440 Biscuit, Spinweld Underbody #R5199-I 10

20433 Brushed Nickel, Spinweld Underbody #R5163-I 10

28522 Chrome, Spinweld Underbody #R5103-I 10

28529 White, Spinweld Underbody #R5177-I 10



20448



20449

4" LAVATORY FAUCET - HI-RISE SPOUT

Catalina 4" Lavatory Faucet with hi rise spout and spinweld underbody.

20448 Chrome #R4204-I 10

20449 Rubbed Bronze #R4284-I 10

REPLACEMENT PARTS

FOR CATALINA SERIES

20041 White Acrylic Lever Handles, Pair
#9-R35-9HC 10

20042 Clear Acrylic Lever Handles, Pair
#9-R35-9CLHC 10

20043 Washerless Cartridge, Pair
#9-R5-13RLH 10

20039 Clear Acrylic Knob Handles, Pair; Used in the outside shower box (#28452; from 2004 to 2008)
#9-R40-9HC 10



20041

20042

20043

20039



All Phoenix Faucets have a limited lifetime warranty.



20044



20047

SINGLE LEVER FAUCET

8" single lever kitchen faucet with washerless cartridge and loop handle.

CHROME FINISH

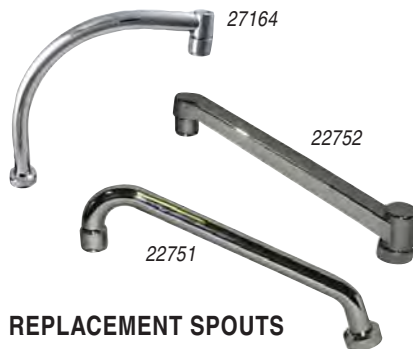
20044 Chrome Finish
#R1101-I 10

20048 Chrome Finish
(Approved for sale in CA and VT)
#R1101-NLI 1

WHITE

20047 White
#R1171-I 10

20045 White
(Approved for sale in CA and VT)
#R1171-NLI 10



27164

22752

22751

REPLACEMENT SPOUTS

Phoenix Hi-Arc Replacement Spout:

27164 Hi-Arc Spout #51-78A-0 10

Phoenix 8" Tubular Spout, Carded:

22751 Tubular Spout #9-50-78-0 10

Phoenix 8" Decorative Spout, Carded:

22752 Decorative Spout
#9-52-78-0 10

20209*
20362

* AB-1953 and
ACT 193
compliant.

20212*

SINGLE LEVER FAUCET

4" single lever lavatory faucet with washerless cartridge and loop handle.

20362 Chrome Finish #R1204-I 10

20209 Chrome Finish (Approved for sale in CA and VT) #R1204-NLI 10

20212 White (Approved for sale in CA and VT) #R1274-NLI 10

Now coming in a box!



LAVATORY DIVERTERS

Lavatory diverter, 4" center with Celcon underbody, built-in anti-siphon mechanism, outlet for hand-held shower. Contains washerless cartridges. Chrome Finish.

28723 4" Diverter #P4432-I 10

Contains a built in anti-siphon mechanism.



27620 ^{LS} 4" Diverter/Faucet, White
#P4407-I 10

20085 4" Diverter/Faucet, White
(Approved for sale in CA and VT)
#P4437-I 10



28473

27565
and
20709

4" LAVATORY FAUCETS

4" lavatory faucet, with clear acrylic handles, without pop-up.

Brass Underbody, Brass stem & bonnets:

28473 ^{LS} Chrome Finish #4012A-I 10

27565 ^{LS} White Finish #4017A-I 10

DuraPro™ Underbody,
Plastic compression valves:

20709 **NEW!** White Finish
#P4037A-I 10

Brass Underbody, Plastic stem & bonnets:

21916 ^{LS} Chrome Finish #4032A-I 10



25616

DuraPro™ Underbody, Plastic stem & bonnets:

28726 Chrome Finish #P4032A-I 10

25616 Parchment Finish
#P4032B-I 10



WITH TEACUP HANDLES

4" Lavatory, brass body, white finish with white teacup handles.

28735 ^{LS} 4" Lavatory, Brass Body and Stems,
Teacup Handles, White
#4017A-T44I 10

In Section L:	Fresh Water Line	Filters	Winterizing	Pumps	Faucet & Shower	Sink & Drain	Holding Tanks	Drain Valves & Fittings	Drain Hose	Chemicals & Toilets
---------------	------------------	---------	-------------	-------	-----------------	--------------	---------------	-------------------------	------------	---------------------



All Phoenix Faucets have a limited lifetime warranty.



TUB & SHOWER DIVERTER FAUCET

Tub and shower diverter, 4" centers with built-in anti-siphon mechanism and outlet for hand-held shower.

4" Tub & Shower Diverter Faucet, Long Spout, D-Spud for hand-held shower, for exposed shower:

- 28471** Brass Underbody, Brass Stem & bonnets, Clear Acrylic Handles, Chrome Finish #4712D-I 10
- 22740** Brass Underbody, Plastic Stem & bonnets, Clear Acrylic Handles, Chrome Finish #4732D-I 10
- 27563** LS DuraPro™ Underbody, Brass Stem & Body Valve, Smoked Handles, White Finish #P4707D-I 10
- 22725** DuraPro™ Underbody, Plastic Stem & bonnets, Clear Acrylic Handles, Chrome Finish #P4732D-I 10

3 3/8" TUB & SHOWER DIVERTER

Tub and shower diverter, 3 3/8" centers. Brass underbody, chrome finish. With long spout. Contain brass stem and bonnets.

FOR EXPOSED SHOWER

The riser pump installed on this faucet must be used with a 3/8" MPT rigid pipe.

- 23366** Tub & Shower Diverter #03712-I 10

SHOWER ARM AND FLANGE



- 20373** Chrome shower arm and flange, ABS #9-60-10/8C 1



4" SHOWER VALVE FAUCETS

With outlet for hand-held shower.

With DuraPro™ Body:

- 27561** Brass stem & bonnets, Smoked Handles, White finish #P407V-I 10
 - 22721** Plastic stem & bonnets, Clear Acrylic Handles, Chrome Finish #P432V-I 10
- With Brass Underbody, Clear Acrylic Handles:
- 28470** Brass stem & bonnets, Chrome finish #412V-I 10
 - 23367** Plastic stem & bonnets, Chrome finish #432D-I 10

SHOWER VALVE

Shower valve, 4" centers for concealed shower. Chrome finish, DuraPro™ underbody. Contains plastic stem and bonnets.



- 22718** 4" Shower Valve, with Shower Head, Arm and Flange #P1432-I 10

TUB/SHOWER DIVERTER

8" tub/shower exposed diverter. Clear acrylic handles, chrome finish, with ABS showerhead, arm and flange, 2" shanks. DuraPro™ underbody. Contains plastic stem and bonnets.



- 23365** 8" 2-Valve Diverter #P8031-I 10

3 VALVE DIVERTER

8-inch center, 3-valve tub and shower, brass body with shower head, arm and flange. Contains brass stem and bonnets.



- 21924** 3-Valve Diverter #601-I 10

OUTSIDE SHOWER

Outside shower, white UV resistant housing (prevents discoloring), 60" vinyl hose, hand held with trickle shut off, washerless valve faucet.



Box size of 10-3/4"W x 5-3/4"H x 3-11/16" D.

- 28452** Exterior Shower, w/White Handles #377-I 10



REPLACEMENT PARTS (For Coast#28452)

- 20322** Outside shower box replacement door, 12-3/8" W x 7-3/8" H #9-370-2 1
- 20039** Clear acrylic knob handles, Pair; Used in the outside shower box (For Coast #28452; from 2004 to 2008) #9-R40-9HC 10
- 20364** White Replacement Handles for CDS#28452 (or any Phoenix Faucet) #9-55-9WHC 10
- 20365** 4" White Shower Valve Replacement (Can also be used for inside RV showers) #P437MV-55I 10
- 20366** Replacement Plastic Stem & bonnets #9-45-5-0 10

In Section L:	Fresh Water Line	Filters	Winterizing	Pumps	Faucet & Shower	Sink & Drain	Holding Tanks	Drain Valves & Fittings	Drain Hose	Chemicals & Toilets
---------------	------------------	---------	-------------	-------	-----------------	--------------	---------------	-------------------------	------------	---------------------

Making Water Work Beautifully

Phoenix Leads the Industry with Multifunction Hand Held Shower Heads, Parts and Accessories



All Phoenix Hand Showers include trickle flow control Multi-Function Shower Heads For the Relaxing, Soothing, or Invigorating Spray You Need Largest selection of styles and colors



5 FUNCTION HAND HELD SHOWER

5 Spray Functions: Spray, Bubble, Massage, Bubble/Spray, Massage/Spray. Trickle shut-off, contour grip.

5 Function, Hand Shower, Head only:

28599 Chrome #9-950 10

28601 White #9-950W 10

5 Function, Hand Shower, Kit (Includes 60" metal hose, 3 pos. bracket and ring guide):

28600 Chrome #9-956 10

28602 White #9-956W 10



SINGLE FUNCTION HAND HELD SHOWER

Single function spray only. Trickle shut-off. Chrome plated ABS or white.

Single Function, Hand Shower, Head only:

28609 Biscuit #9-910B 10

20052 Brushed Nickel #9-910BN 10

28612 Chrome #9-910C 10

28607 White #9-910W 10

Single Function, Hand Shower, Kit (Includes 60" vinyl hose, 3 pos. bracket and ring guide):

28610 Biscuit #9-916B 10

28803 Brushed Nickel #9-916BN 10

28611 Chrome #9-916C 10

28608 White #9-916W 10



3 FUNCTION HAND HELD SHOWER

3 Spray Functions: Spray, Massage, Massage/Spray. Trickle shut-off, contour grip.

3 Function, Hand Shower, Head only:

28603 Chrome #9-930 10

28605 White #9-930W 10

3 Function, Hand Shower, Kit (Includes 60" metal hose, 3 pos. bracket and ring guide):

28604 Chrome #9-936 10

28606 White #9-936W 10



SINGLE FUNCTION HAND HELD SHOWER

Single function spray only. Trickle shut-off. Chrome plated ABS or white.

Single Function, Hand Shower, Head only:

28616 Biscuit #9-342B 10

28613 White #9-342 10

Single Function, Hand Shower, Kit (Includes 60" vinyl hose, 3 pos. bracket and ring guide):

28617 Biscuit(w/biscuit vinyl hose) #9-346B 10

20455 Rubbed Bronze (w/black vinyl hose) #9-346RB 10

28615 White (w/metal hose) #9-356 10

28614 White (w/white vinyl hose) #9-346 10

REPLACEMENT HOSES



SHOWER HOSE WASHERS-PK/10

Pack of washers for hand held shower hose.

28660 Washers, Pk/10 #9-340-3 10



Both White Nylon and Vinyl hoses are nylon reinforced. But there is a slight visual difference in the outer coating as one has a white coating and the other is clear coated.

Clear Coated Vinyl Hose, 60":

28634 Biscuit #9-342-59B 10

20053 Brushed Nickel #9-901-60BN 10

28633 White #9-342-59 10

White Nylon Hose:

28635 40" #9-342N-40 10

28636 60" #9-342N-60 10

20385 60" White Vinyl (but reflects a metal look) #9-901-60W 10

28637 72" #9-342N-72 10

Double Hooked Stainless Steel Hose, 60":

28620 ^{LS} Biscuit #9-900-60B 10

28618 Chrome #9-900-60 10

In Section L:	Fresh Water Line	Filters	Winterizing	Pumps	Faucet & Shower	Sink & Drain	Holding Tanks	Drain Valves & Fittings	Drain Hose	Chemicals & Toilets
---------------	------------------	---------	-------------	-------	-----------------	--------------	---------------	-------------------------	------------	---------------------

PHOENIX REPLACEMENT PARTS

FOR SHOWERS



PULLOUT SPRAY HEAD ONLY

- 20368** Brushed Nickel
#9-2103-20BN 10
- 20369** Chrome
#9-2103-20C 10
- 20370** White
#9-2103-20W 10

HOSE GUIDE

Guide keeps shower hose out of your bathing area. The clear version is universal for all finishes. Blister pkg: 3-3/4"H x 1-7/8"W x 1"L.

- 28623** Biscuit #9-341-22B 10
- 28621** Chrome #9-341-22C 10
- 28624** Clear #9-341-22 10
- 28622** White #9-341-22 10



SHOWER BRACKET

Permits 3-position spray angle adjustment. Includes finishing screws and wall anchors. Blister pkg: 5-9/16"H x 2-7/8"W x 2-1/4"L.

- 28626** Biscuit #9-341-21B 10
- 28628** Chrome #9-341-21C 10
- 28627** Clear #9-341-21CL 10
- 28625** White #9-341-21 10

SWIVEL SHOWER BRACKET

Swivel connector allows infinite hand shower angle adjustments. Use to mount a hand shower to an existing 1/2" shower arm. Blister pkg: 5-9/16"H x 2-7/8"W x 2-1/4"L.

- 28629** Chrome #9-360-21C 10

FOR FAUCETS



REPLACEMENT SPOUTS

- 20371** Hi-Arc Spout, Chrome
#9-51-78A-0 10
- 20372** LS 8" Hi-Arc Spout, White
#9-51-78W-0 10
- 20374** LS 8" Decorative Spout, White
#9-57-78A-0 10

For Utopia Series

- 20375** "D" Spout, For Utopia Series
#9-91C160D810A 10
- 20376** Hi-Arc Spout, For Utopia Series
#9-91C160HRA 10
- 20377** 8" Tube Spout, For Utopia Series
#9-91C160T800A 10



SPOUT NUTS

- For Phoenix Plastic Spouts**
- 20378** Chrome #9-P52-11C 10
- 20379** White #9-P52-17 10
- For Phoenix Metal Spouts**
- 20380** Chrome #9-P54-11C 10

For Catalina Series

- 20381** Brushed Nickel
#9-R57-13BN 10
- 20384** Chrome
#9-R57-13C 10
- 20386** White
#9-R57-13W 10



SWIVEL SHOWER CONNECTOR & WALL BRACKET

Allows the hand shower to be mounted in any desired location. Screws & anchors included. 1/2" F x 1/2" M. Blister pkg.: 5-9/16"H x 2-7/8"W x 2-1/4"L.

- 28630** White #9-341-20 10

DIVERTER SHOWER HEAD-HAND HELD

Use to add a hand shower to your existing shower head installation. 1/2" F x 1/2" M x 1/2" F. Blister pkg: 5-9/16"H x 2-7/8"W x 2-1/4"L.

- 28631** Chrome #9-360-13 10

FLOW CONTROL ADAPTER

Connects between the hose and head to allow full flow to trickle. 1/2" M x 1/2" F. Blister pkg: 4-7/8"H x 1-7/8"W x 1-1/4"L.

- 28632** Plastic, Chrome finish
#9-360-16 10