

Weight Distribution Towing



HITCHES

HUSKY CENTER LINE® Towing System

The Center Line Torsion Weight Distribution Hitch and Active Sway Control System is the next generation in towing safety and performance.

The **Center Line** Torsion Weight Distribution and Sway Control System is the industry's first self centering sway control system, to provide you with complete confidence during your towing experience. Compression cylinder action and torsion spring bars work together to distribute weight and oppose trailer sway before it begins, keeping your trailer straight and on center, giving you increased control. The **Center Line** system can be used in all driving and weather conditions **including backing-up**. The "Easy Adjust" head alignment systems allow quick and easy set-up at the time of installation. The **Center Line** system is backed by a limited lifetime warranty for as long as you own the product (for complete warranty details visit www.huskytow.com/support.)

ADVANTAGES OF HUSKY'S CENTER LINE ACTIVE SWAY CONTROL TECHNOLOGY

- Compression cylinder design applies counter pressure to actively control trailer sway.
- Eliminates use of clamped friction materials.
- Provides constant pressure to re-center the trailer behind the tow vehicle.
- Can be used while backing up.
- Tapered torsion spring bars help transfer weight between all axles of the two vehicles for safe towing.
- Next Generation Patent Pending Technology.

The **Center Line** system overcomes many problems associated with the equalizing hitches and passive friction sway controls that have been in use for the past 30 years:

- No more removing the sway control when backing up! The **Center Line** system is *designed for your convenience*.
- No more waiting for the trailer to right itself as passing trucks, wind or road conditions cause sway. The **Center Line** system is *self-centering*.
- You don't have to hear our system to know it's working. The **Center Line** system's advanced technology *significantly reduces noise* common with old technology systems.



CENTER LINE Patented
LINE®

CENTER LINE HEAD ASSEMBLY KIT

Includes head assembly, spring bar brackets, 10" shank and hardware kit. Spring bars not included, required to complete hitch (see below).

Tongue Weight Range	Gross Trailer Weight	Part #
500–1,400 lbs.	4,000–14,000 lbs.	31390

CENTER LINE SPRING BARS ONLY

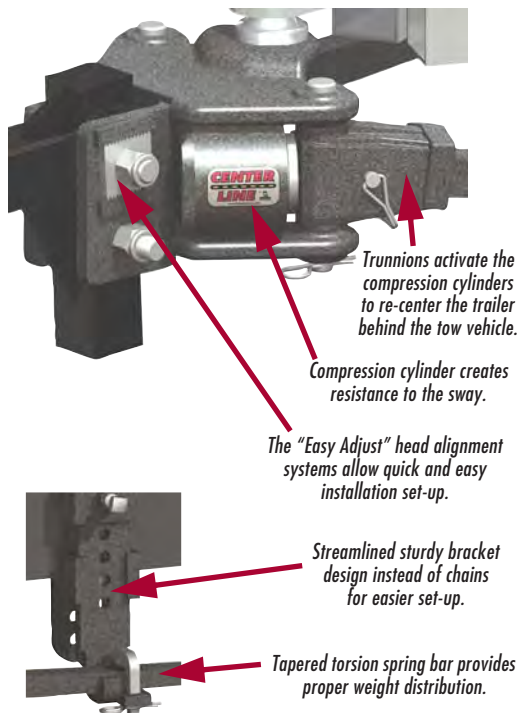
Match the spring bar rating to the trailer weight. Spring Bars have metallic gray textured finish. Sold in pairs.

Tongue Weight Range	Gross Trailer Weight ¹	Part #
500–800 lbs.	Up to 8,000 lbs.	31511
801–1,200 lbs.	Up to 12,000 lbs.	31512
1,001–1,400 lbs.	Up to 14,000 lbs.	31513

CENTER LINE SHANKS

Shank Length	Shank Rise	Shank Drop	Part #
10" Forged	7-1/2"	1/2"	31552
12"	7-1/2"	1/2"	30855
14"	7-1/2"	1/2"	30856
10"	10-3/4"	3-3/4"	30857
14"	10-3/4"	3-3/4"	30858
12"	13-1/4"	8-1/4"	30859

¹ SAFETY TIP: Do not use the Center Line Hitch with loaded trailers under 4000 lbs.





HUSKY
TOWING PRODUCTS

Weight Distribution Towing

HITCHES

Weight distribution hitches evenly distribute weight over the entire length of tow vehicle and trailer, resulting in a more level ride with more control and stability, better braking, less strain on vehicle and increased towing capacity.



Without Weight Distribution



With Weight Distribution

WEIGHT DISTRIBUTION HITCH FEATURES

- Husky's hitch head design reduces installation time.
- Open hitch head design allows easy access to hitch ball shank.
- Hitch head features built-in sway control ball platform.
- Hitch head accepts different spring bar capacities for maximum versatility and reduced inventory.
- Black polyester finish resists rust and corrosion.

- Lift brackets allow safe and easy hitch hook-up.
 - Interchangeable spring bars fit left or right sides of hitch head.
 - Includes assembly hardware and chains.
 - Hitch ball not included. Be sure to match ball capacity to gross trailer weight.
 - Available with or without ball mount shank (#31518).
- See the Husky Parts pages for hitch replacement parts.

Round Bar Weight Distribution Hitch

Weight Distribution Hitch with Bolt-Together Ball Mount/Shank Assembly. Available with or without #31518 weight distributing shank.

- 8" total height adjustment. • Rise: 5-5/8"; Drop: 2-3/8". • Shank length: 10". • Ball to pin hole: 12-3/4". • Dual sway control platform.
- Raised ball platform for greater coupler clearance. • Balls not included; 1-1/4" hole on head assembly requires 1-1/4" shank on trailer ball.
- Chains are attached. ****07036 (limited supply) requires a 2-1/2" receiver; do not exceed the vehicle's owners manual rating.**



Round Bar

WEIGHT DISTRIBUTION HITCH, ROUND BAR: FULL SIZED TRAILERS

ROUND BAR		Complete Assembly (W/ Shank Assembly)	(Without Shank)
Tongue Wt. Range‡	Gross Trailer Wt.‡	Part #	Part #
400-600 lbs.	6,000 lbs.	31421	n/a
501-800 lbs.	8,000 lbs.	31422	31427
801-1,200 lbs.	12,000 lbs.	31423	31428
1,001-1,400 lbs.	14,000 lbs.	31425	n/a
1,201-1,700 lbs. **	15,000 lbs.	07036	n/a

Round Bar Weight Distribution Hitch Package

Weight Distribution Hitch with Bolt-Together Ball Mount/Shank Assembly and Sway Control. • 8" total height adjustment. • Rise: 5-5/8"; Drop: 2-3/8". • Shank length: 10". • Ball to pin hole: 12-3/4". • Dual sway control platform. • Raised ball platform for greater coupler clearance. • 1-1/4" hole on head assembly requires 1-1/4" shank on trailer ball. • Chains are attached. Ready for safe towing right out of the box!



Includes Sway Control

Round Bar

Includes Trailer & Sway Control Balls

Package Contains the following:

- Weight Distribution Hitch rated for trailers up to stated Tongue Weight
- Friction Sway Control with dual brake pad system to diminish sway from windy conditions and passing vehicles (recommended on trailers over 16 ft. in length)
- Trailer Ball pre-assembled to Weight Distribution Hitch
- Sway Control Ball attached.

Description	Part #
Round WD Hitch with Sway Control Package, 2" Trailer Ball	
WD Hitch & Sway Control Package, 600 lb.	31995
WD Hitch & Sway Control Package, 800 lb.	31996
Round WD Hitch with Sway Control Package, 2-5/16" Trailer Ball	
WD Hitch & Sway Control Package, 800 lb.	31997
WD Hitch & Sway Control Package, 1200 lb.	30849

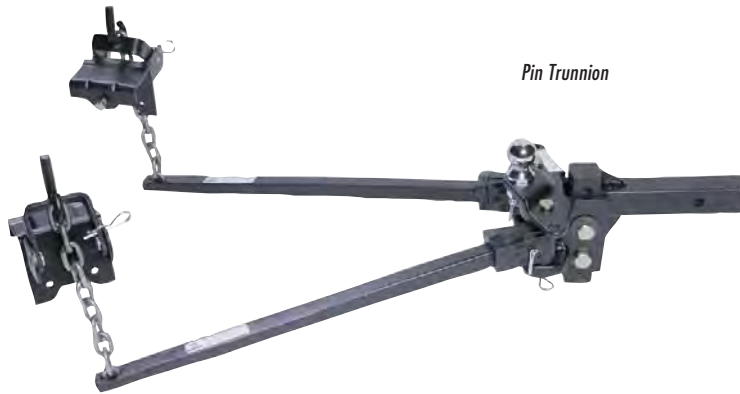
Weight Distribution Towing



HITCHES

Trunnion Bar Weight Distribution Hitch

Bolt-Together Hitch Head/Shank Assembly. • Fits Class III / IV 2" receivers • Bolt-together head with 8" of height adjustment • Black baked-on polyester powder-coat finish for superior rust protection • 5-year limited warranty. • 8" total height adjustment. • Rise: 7-1/2"; Drop: 1/2". • Shank length: 10". • Ball to pin hole: 12". • Balls not included; 1-1/4" hole on head assembly requires 1-1/4" shank on trailer ball. • Chains are attached.



Pin Trunnion

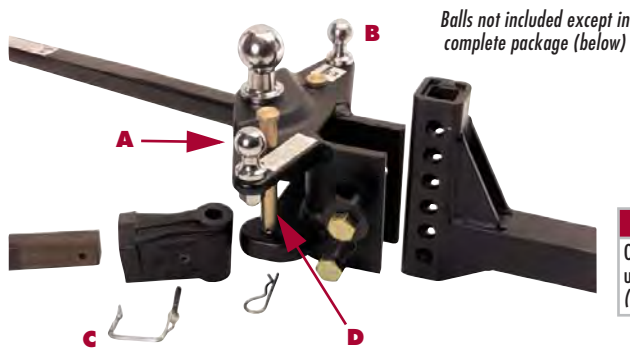
WEIGHT DISTRIBUTION HITCH, TRUNNION BAR: FULL SIZED TRAILERS

PIN TRUNNION BAR		Complete (W/ Shank Assy.)	
Tongue Wt. Range†	Gross Trailer Wt.‡	Part #	
501-800 lbs.	8,000 lbs.	31331	
801-1,200 lbs.	12,000 lbs.	31335	

* With offset snap up brackets. ** 6-1/2" total height adjustment, rise 4-3/4", drop 1-3/4", shank length 8-3/8", ball to pin hole 12-1/4".

†Limited to Vehicle Tow Rating; see Vehicle owners Manual.

PIN TRUNNION FEATURES: **A** Raised ball platform for greater coupler clearance, turning radius, access to trailer ball nut. Only 4" of ground clearance required to insert spring bars into pin trunnions. **B** Built-in dual sway control platform allows the use of either left or right sway control. When towing trailers longer than 24 feet, a second sway control should be added. **C** Spring bars are easily removed from pin trunnions with safety D-clips. Pin trunnions remain attached to head. **D** Unique pin trunnions attach to head using Grade 5 bolts instead of the standard knuckles. No need to remove pins so head stays clean and free of grease.



Balls not included except in complete package (below)



07005

Trunnion Bar Hitch Accessories

Offset Snap-Up Bracket Assembly (Ideal for light duty WDH 07027; for use on tent trailers with swivel jacks; single unit with lift bracket) (Limited supply)

Part

07005

Trunnion Bar Weight Distribution Hitch Package

Weight Distribution Hitch with Bolt-Together Ball Mount/Shank Assembly and Sway Control. • Fits Class III / IV 2" receivers • Bolt-together head with 8" of height adjustment • Black baked-on polyester powder-coat finish for superior rust protection • 5-year limited warranty. • 8" total height adjustment. • Rise: 7-1/2"; Drop: 1/2". • Shank length: 10". • Ball to pin hole: 12". • Balls included. • Chains are attached.



Includes Trailer & Sway Control Balls

Includes Sway Control

Package Contains the following:

- Weight Distribution Hitch rated for trailers up to stated Tongue Weight
- Friction Sway Control with dual brake pad system to diminish sway from windy conditions and passing vehicles (recommended on trailers over 16 ft. in length)
- Trailer Ball pre-assembled to Weight Distribution Hitch
- Sway Control Ball attached.

Description	Part #
Trunnion WD Hitch with Sway Control Package, plus 2-5/16" x 1-1/4" 12,000 lb. Trailer Ball	
NEW! WD Hitch & Sway Control Package, 800 lb.	31620
NEW! WD Hitch & Sway Control Package, 1200 lb.	31621



HUSKY
TOWING PRODUCTS

Weight Distribution Towing

HITCHES

Sway Control

- Dual friction brake pad system provides constant and adjustable sway reduction.
 - Diminishes sway from windy conditions & passing vehicles.
 - Secures with socket & spring clip connectors.
 - Detaches quickly for storage.
 - Right-handed & left-handed models.
- NOTE: for trailers 24' and longer, the use of both Right Hand and Left Hand sway controls is recommended.

Description	Part #
Sway Control, RH, Packaged	34715
Sway Control, LH, Packaged	37498
Sway Control Parts & Accessories	
Weld-on Ball Mount Bar	34845
Replacement Slide Bar	34846
Replacement Crank Handle	34847
Replacement Tongue Ball Plate	34842
Replacement Spring Clip, 1/2", 2/Pk	34853
Sway Control Ball, 1-1/4"	33842
Ball Mount Adapter, Boxed	39585
Replacement Screws, Pkg/8	71195
Clamp-On Sway Control Ball Kit (for no-drill applications; fits frames up to 6")	38964



34847

34845



38964



39585



33842

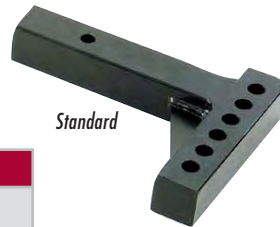


34853

Complete Sway Control

71195

Weight Distribution Hitch Shanks

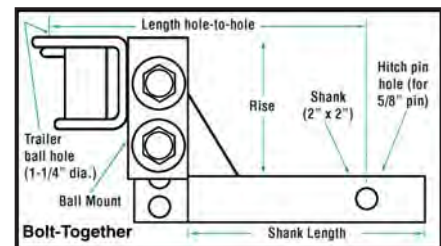


Standard



Forged

Bolt-Together Shank Only							Part #
Shank Length	Length (Ball hole to Pin Hole)		Rise		Drop		Bolted Shank
	Round	Trunnion	Round	Trunnion	Round	Trunnion	
*10" Standard	12-3/4"	12"	6-1/2"	7-1/2"	2-1/2"	1/2"	31518
10" Forged	12-3/4"	12"	6-1/2"	7-1/2"	2-1/2"	1/2"	31552
12" Standard	12"	13-7/8"	6-1/2"	7-1/2"	2-1/2"	1/2"	30855
14" Standard	14"	16"	6-1/2"	7-1/2"	2-1/2"	1/2"	30856
10" Standard	10"	11-7/8"	9-3/4"	10-3/4"	5"	3-3/4"	30857
14" Standard	14"	15-7/8"	9-3/4"	10-3/4"	5"	3-3/4"	30858
12" Standard	12"	14"	13-1/2"	13-1/4"	9-3/4"	8-1/4"	30859



* Included with bolt on Weight Distributing Hitch

Fifth Wheel Towing



HITCHES

Husky Tilt Plate 16K S Straight Jaw Fifth Wheel Hitch (Husky Silver Series)

Husky 16K S Tilt Plate Design Advantages:

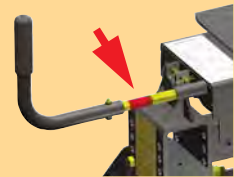
- Addition of a pop out safety hookup indicator
- Engineered/designed tolerances for less noise
- Better fit of components for consistent performance and a quieter ride
- Fore and aft adjustment on the uprights for proper "hitch over axle" placement
- Unlike some slide bar style hitches, the sides of the 16K S are open and allow the king pin to swing without hitting the sides of the head
- Meets or exceeds SAE J2638 fifth wheel standards
- Superior finish
- Yellow zinc fasteners
- Compatible with all Husky custom install kits and earlier model X-16 Husky hitches



The 4-way side to side, front to rear pivoting tilt plate provides easy hookup in most situations. The locking mechanisms in tilt plate hitches do not tilt with the head; they remain stationary while only the king pin and tilt plate move.

16K S Features

Red indicates 16K S jaw in open position







Green indicates jaw in closed position. Visible indicator pin on 16K S verifies king pin is engaged

Husky 16K S Tilt Plate Fifth Wheel Hitch (Straight Jaw)

Product	Use with all Fifth Wheels up to*	Jaw Style	Pop-out Indicator	Fore/Aft Adjustment	Warranty **
Husky 16K S	16,000 lbs.	Straight	Yes	2 Position	5 years

**Do not exceed vehicle manufacturer weight capacity.
**See www.huskytow.com for warranty details.*

Husky Silver Series Select-A-Hitch, as easy as 1-2-3

HITCH TYPE	STEP 1: HEAD		STEP 2: TOW VEHICLE		STEP 3: BASE RAIL		
	Head + Cross Member (Silver)	+	Short Bed	OR	Long Bed	+	Rail Only (Black)
	Part #		Roller # (Silver)		Uprights # (Silver)		Part # (1)
HUSKY TILT-PLATE MODEL (STRAIGHT JAW)							
16K S	 31313	+	 10-26 Glider Silver 32042	OR	 31314	+	 31323

(1) Installation Kits sold separately (see page 517). Husky offers vehicle specific install kits with universal or limited drill installations.



HUSKY
TOWING PRODUCTS

Fifth Wheel Towing

HITCHES

Husky Full-Feature Articulating Head Wrap-Around Jaw Fifth Wheel Hitch

Husky Full-Featured Articulating Head Design Advantages

- Improved pop out safety hookup indicator
- Handle moved forward, further from the king pin box
- Foam grip handle for easier operation
- Self locking and release handle
- No need to manually open the jaw to hitch up
- Patent-pending Anti-Walk wrap around jaw
- Engineered/ designed tolerances for less noise
- Better fit of components
- Fully articulating head (the jaw moves with the head)
- Fore and aft adjustment on the uprights for proper "hitch over axle placement"
- Improved cross member with castle nut
- Meets or exceeds SAE J2638 fifth wheel standards
- Radius added to the top plate for rugged appearance
- Superior finish
- Yellow zinc fasteners
- Compatible with all Husky custom install kits and earlier model Husky hitches

- MORE FEATURES in a sleek Husky design
- LARGE SELECTION of no-drill/limited drill applications
- Easy installation options
- Weight ratings that meet the needs of the RV industry
- Only line of fifth wheel hitches with fore & aft upright adjustment
- Safety hook-up indicator on all models
- Very competitive pricing
- Less inventory investment required

Husky Silver Series



Full Featured 16K W & 26K W Features

On the full-featured series, orange indicates the jaw is open



No orange means you're latched

Castle Nut secures head and reduces noise



Wrap around jaw fully encloses trailer king pin



THE NEXT GENERATION OF FIFTH WHEEL HITCHES

A full articulating head allows for the easiest hookups. Articulating heads move with the motion of the trailer, not the tow vehicle, for a smoother ride on rough roads. The locking mechanisms in articulating heads move side to side with the king pin.

Husky Full-Featured Articulating Head Fifth Wheel Hitches (Wrap-Around Jaw)

Product	Use with all Fifth Wheels up to*	Jaw Style	Pop-out Indicator	Fore/Aft Adjustment	Warranty**
Husky 16K W	16,000 lbs.	Wrap	Yes	2 Position	5 years
Husky 26K W	26,000 lbs.	Wrap	Yes	3 Positions	10 years

*Do not exceed vehicle manufacturer weight capacity. **See www.huskytow.com for warranty details.









Fifth Wheel Towing



HITCHES



Husky Silver Series Select-A-Hitch, as easy as 1-2-3

HITCH TYPE	STEP 1: HEAD		STEP 2: TOW VEHICLE		STEP 3: BASE RAIL		
	Head + Cross Member (Silver)	+	Short Bed	OR	Long Bed	+	Rail Only (Black)
	Part #		Positioning Device #		Uprights # (Silver)		Part # ⁽¹⁾
HUSKY FULL-FEATURED ARTICULATING HEAD MODELS (WRAP AROUND JAW)							
16K W	 31326	+	 10-26 Glider Silver 32042	OR	 31314	+	 31323
26K W	 31318	+	 10-26 Glider Silver 32042	OR	 31325	+	 31323

⁽¹⁾ Installation Kits sold separately (see page 517). Husky offers vehicle specific install kits with universal or limited drill installations.

Popular Replacement Parts for 5th Wheel Hitches (Black or Silver Series)

Replacement Rail Hitch Pins and Spring Clips.

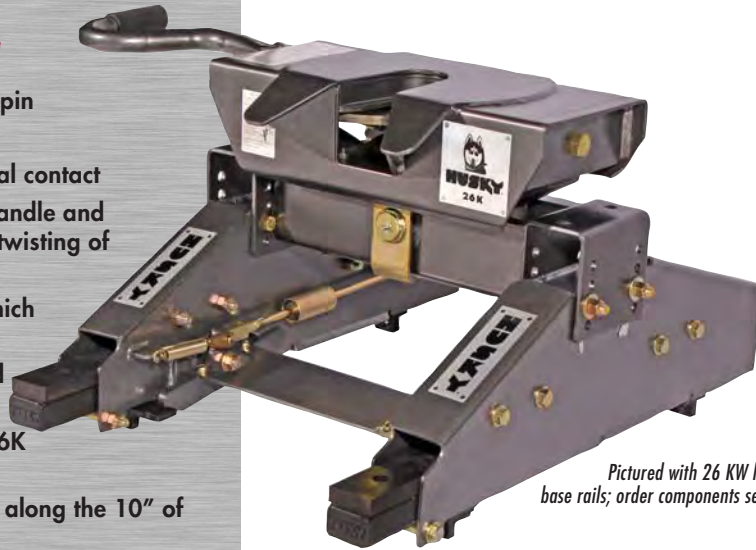
Description	Part #
Other Popular Replacement 5th Wheel Hitch Parts	
NEW! Bag/4 Rail Hitch Pin, 1/2" x 4-1/8" (3-1/2" Usable Length)	30003
Spring Clip, Bulk	33792
NEW! Bag/4 Spring Clip	30004





Husky 10-26K Glider

- For units up to 26,000 lbs. with a 2" king pin
- 10" of travel
- Quiet due to the reduction of metal-to-metal contact
- Easy to operate ergonomically designed handle and latching mechanism: no more pulling and twisting of a handle
- Eliminates working with pins or latches which bind when on uneven ground
- Installs to our current rails and all standard rails in the 22-5/8" footprint
- Can be used on our Silver or Black series 16K and 26K fifth wheel hitches
- A balanced system allows easy movement along the 10" of travel
- Travel is on two compatible composite materials designed for long wear, high loads and resistance to the elements
- Yellow zinc chromate hardware to resist corrosion
- Patent pending
- Lab tested—road proven!



Pictured with 26 KW head and base rails; order components separately

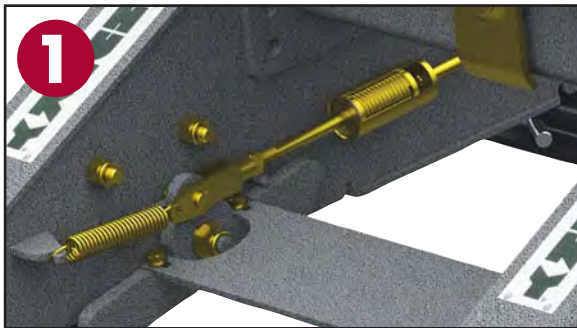
See previous page to order

No more wear on rails caused by metal rollers that can grind off paint to cause potential rust areas! (See illustration 4)

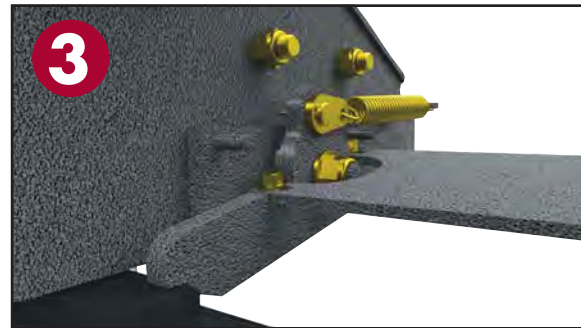
“No-Bind” Latching Mechanism

Today with any roller, if you have load against the locking pin/mechanism, you have to jockey the truck and keep getting in and out trying the handle until it disengages. With the Husky 10, you just put the operating handle in the Unlock position, get in your truck and drive forward or back, depending on what position you need to

be in. Even if you are on uneven ground and the locking mechanism has pressure against it, you no longer have to jockey the truck and get out again to try the handle. With the Husky 10, you just move slightly forward or aft and listen for the locking mechanism to automatically release when the pressure subsides, allowing the flipper to automatically lock in the next position. No more 2-person job, no more in-and-out of the truck to work the handle.



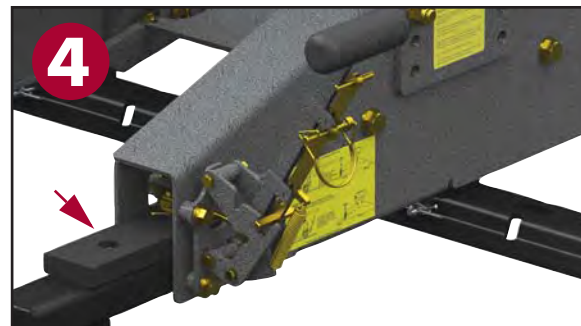
Compression cylinder takes the pressure from the load on the mechanism



Flipper automatically selects the next lock position, while you are still in your truck



Truck moves forward, compression cylinder relaxes to allow flipper to work



Composite materials glide to prevent metal-on-metal grinding for quiet operation

Base Rails



HITCHES

Base Rails and Install Kits (4-Bolt Series)

31323 4-BOLT BASE RAILS—For the perfect fit, use the **31323 4-Bolt Base Rails** with one of the the Custom Bracket Kits on the next page to fit your truck to the Husky Fifth Wheel Hitch, Glider, and Gooseneck Hitches. Bracket Kits come with hardware and easy-to-install instructions. *You must order either a custom bracket kit OR the 31563 4-Bolt Universal Install Kit for 31323.*



Universal Install Kit (4-Bolt 31563 pictured)

Description	Part #
4-BOLT BASE RAIL KIT — FULL SIZE PICKUPS, 6-1/2' & 8' Bed Lengths	
4-Bolt Base Rails; Includes Two Base Rails only — requires 31563 Universal Install Kit (below) or a Custom Bracket Kit (next page), sold separately	31323
Universal Install Kit for 4-Bolt Base Rails (Four angle brackets and associated hardware in one box for installation on most applications (requires drilling))	31563



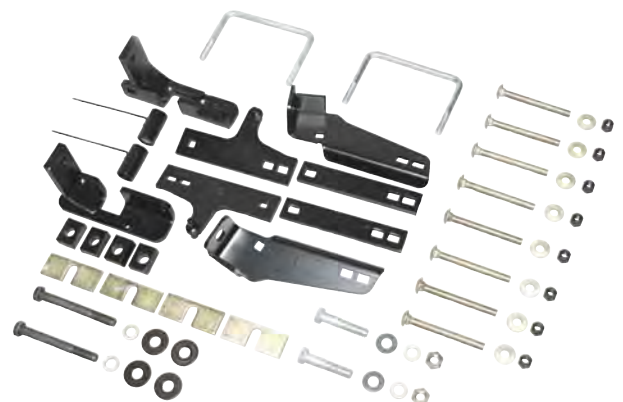
Base Rails and Install Kits (10 Bolt Series)

30686 10-BOLT BASE RAILS—The perfect application for those accustomed to installing fifth wheels using a 10-bolt system. Can be used with all Husky fifth wheel products and requires the use of a Husky install kit. Finish is durable black powdered coat. *You must order either a custom bracket kit OR the 31622 10-Bolt Universal Install Kit for 30686.*

Description	Part #
10-BOLT BASE RAIL KIT — FULL SIZE PICKUPS, 6-1/2' & 8' Bed Lengths	
10-Bolt Base Rails; Includes Two Base Rails only — requires 31622 Universal Install Kit (below) or a Custom Bracket Kit (next page), sold separately	30686
Universal Install Kit for 10-Bolt Base Rails (Angle brackets and associated hardware in one box for installations on most applications (requires drilling))	31622

Custom Bracket Kits for Base Rails

For the perfect fit, use Husky Base Rails with one of the the Custom Bracket Kits on the next page to fit your truck to the Husky Fifth Wheel Hitch, Glider, and Gooseneck Hitches. Bracket Kits come with hardware and easy-to-install instructions. Custom brackets significantly reduce installation time and guarantee an exact fit for your pickup. Some clamp-on and bolt-on brackets require **no drilling** into the truck frame, and all attachment types are designed for the best possible installation. *See next page.*



Husky Custom Bracket Kits are used with Base Rails for an exact fit and reduced installation time, and include hardware and easy-to-follow instructions



Base Rails

CUSTOM BRACKET KITS, REQUIRED FOR USE WITH 31323 4-BOLT BASE RAIL						Bracket
Year	Make	Pickup Model	Bed L	Attachment Type	Part #	
07-13	Chev/GMC	Silverado & Sierra 1500 New Body (GMT 900)	6-1/2' & 8'	Custom brackets, drilling required	31396	
99-10	Chev/GMC	Silverado & Sierra, All (includes up to 07 Classic) plus 07-09 2500HD & 3500	6-1/2' & 8'	Custom brackets, drilling required	31415	
01-10	Chev/GMC	2500/3500 With or Without Integrated Brake Control Plus 99-07 Classic 1500	6-1/2' & 8'	Custom brackets, drilling required	31397	
11-13	Chev/GMC	Pickup 2500/3500	6-1/2' & 8'	Custom brackets, no drill (frame) Bolt-on	31852	
11-13	Chev/GMC	Pickup 2500/3500	6-1/2' & 8'	Custom brackets, drilling required Bolt-on	31853	
88-98	Chev/GMC	C/K Pickup 1500, 88-99 C/K Pickup 2500/3500	6-1/2' & 8'	Custom brackets, drilling required	31402	
73-87	Chev/GMC	Pickup	6-1/2' & 8'	Universal bracket kit, drilling required	31563	
07-08	Dodge	Ram Pickup 1500	6-1/2' & 8'	Custom brackets, drilling required	31565	
07-08	Dodge	Ram Pickup 1500	6-1/2' & 8'	Custom brackets, no drill clamp-on	31413	
09-12	Dodge	Ram Pickup 1500	6-1/2' & 8'	Custom brackets, no drill (frame) clamp-on	31566	
09-12	Dodge	Ram Pickup 1500 4-Bolt Adapter Kit	6-1/2' & 8'	Adapter brackets for 4-Bolt Kit; drilling required	30665	
02-06	Dodge	Ram Pickup 1500, plus 06 1500 Mega Cab	6-1/2' & 8'	Custom brackets, drilling required	31565	
03-09	Dodge	Ram Pickup 2500, 3500 (except 3500HD 4WD)	6-1/2' & 8'	Custom brackets, drilling required	31565	
03-12	Dodge	Ram Pickup 2500, 3500	6-1/2' & 8'	Custom brackets, no drill (frame) clamp-on	31413	
02-06	Dodge	Ram Pickup 1500 (Except '06 1500 non-Mega Cab)	6-1/2' & 8'	Custom brackets, no drill , clamp-on	31413	
02-08	Dodge	Ram Pickup Full Size 1500 (except Mega Cab)	6-1/2' & 8'	Adapter brackets for 4-Bolt Kit; drilling required	30640	
94-02	Dodge	Ram PU, All (except 2002 1500)	6-1/2' & 8'	Custom brackets, drilling required	31404	
93-Older	Dodge	Ram Pickup	6-1/2' & 8'	Universal bracket kit, drilling required	31563	
04-13	Ford	F-150 (Clamp On) (New Body Style)	6-1/2' & 8'	Custom brackets, no drill , clamp-on	31564	
04-12	Ford	4-Bolt/10-Bolt F-150	6-1/2' & 8'	Custom brackets for 4- & 10-Bolt Kits, drilling required	30619	
96-Older	Ford	F-150	6-1/2' & 8'	Custom brackets for 4-Bolt Kit; drilling required	30607	
97-Older	Ford	F-250/350	6-1/2' & 8'	Custom brackets for 4-Bolt Kit; drilling required	30607	
99-12	Ford	F-250/350/450 Super Duty (minus chassis cab)	6-1/2' & 8'	Custom brackets for 4-Bolt Kit; drilling required	30607	
08-12	Ford	3/4 & 1 ton Pickups	6-1/2' & 8'	Custom brackets, drilling required	31408	
05-10	Ford	F-250/350 plus 08-09 F-450 Super Duty	6-1/2' & 8'	Custom brackets, drilling required	31412	
08-12	Ford	F-250/350/450 Super Duty	6-1/2' & 8'	Custom brackets, drilling required	31408	
99-07	Ford	F-250/350 Super Duty	6-1/2' & 8'	Custom brackets, no drill (frame), bolt-on	31407	
99-04	Ford	F-250/350 Super Duty	6-1/2' & 8'	Four bolt drill. Top frame rail mounting	31405	
99-04	Ford	F-250/350 Super Duty	6-1/2' & 8'	Custom brackets, drilling required	31406	
97-04	Ford	F150 Heritage (old body)	6-1/2' & 8'	Custom brackets, drilling required	31409	
98-Older	Ford	F250HD / F350, plus 96-Older F150 / 250	6-1/2' & 8'	Universal bracket kit, drilling required	31563	
04-09	Nissan	Titan King Cab plus 08-09 Titan Crew Cab Pickup	6-1/2' & 8'	Custom brackets, drilling required	31395	
07-12	Toyota	Tundra Pickup	6-1/2' & 8'	Custom brackets, drilling required	31410	
99-06	Toyota	Tundra Pickup	6-1/2' & 8'	Universal bracket kit, drilling required	31563	
		Universal Style, for Older Full Size Pickups	6-1/2' & 8'	See www.huskytow.com for fits; drilling required	31563	
CUSTOM BRACKET KITS, REQUIRED FOR USE WITH 30686 10-BOLT BASE RAIL						
02-08	Dodge	1500 10-Bolt Kit	6-1/2' & 8'	Adapter bracket for 10-Bolt Kit; drilling required	30562	
02-08	Dodge	1500 10-Bolt Tube Spacer Kit	6-1/2' & 8'	Spacer tubes for 10-Bolt Kit; drilling required	30575	
03-10	Dodge	2500/3500 10-Bolt Tube Spacer Kit	6-1/2' & 8'	Spacer tubes for 10-Bolt Kit; drilling required	30575	
03-12	Dodge	2500/3500 10-Bolt Kit	6-1/2' & 8'	Adapter bracket for 10-Bolt Kit; drilling required	30582	
04-12	Ford	F150 Kit 10-Bolt/4-Bolt	6-1/2' & 8'	Custom brackets for 4- & 10-Bolt Kit; drilling required	30619	
00-06	Toyota	Tundra 10-Bolt Tube Spacer Kit	6-1/2' & 8'	Spacer tubes for 10-Bolt Kit; drilling required	30597	
07-12	Toyota	Tundra 10-Bolt Tube Spacer Kit	6-1/2' & 8'	Spacer tubes for 10-Bolt Kit; drilling required	30600	

Additional Brackets & Hardware	Qty/ Hitch	Part #
Custom Bracket Kit for use with 31404 ; Fits Dodge 02-05 Ram PU 1500, 03-05 2500, 6-1/2' & 8' Bed	1	31414
Straight "L" Bracket Service Kit	1	31385
Left and Right Angle Bracket Replacement Kit	1	31401
Hardware Service Kit for 31563 Bracket Kit.	1	31418
Base Rail Spacer Kit	1	31419

Additional Brackets & Hardware	Qty/ Hitch	Part #
Adapter Bracket for Dodge Ram Pickup (MUST be used with 31563 Universal Base Rail Kit) (<i>Limited supply</i>)	1 each	05680
Wheel Bolt Kit Pkg/8	1 Pk	31417
Center Bolt Kit to use with 20K, 25K, 26K Fifth Wheel Hitches and Rollers (Black Series only)		053362
Center Bolt Kit to use with Black or Silver Series Fifth Wheel Hitches and Rollers		32059

Gooseneck Hitches



HITCHES

Fixed Ball Platform Gooseneck Hitch

Husky's Gooseneck Trailer Hitch Ball Platform is used to tow trailers that use a gooseneck coupler such as livestock trailers and farm equipment trailers. These hitches feature safety chain attachments and 2-5/16" ball. *Base rails required; purchase separately.*

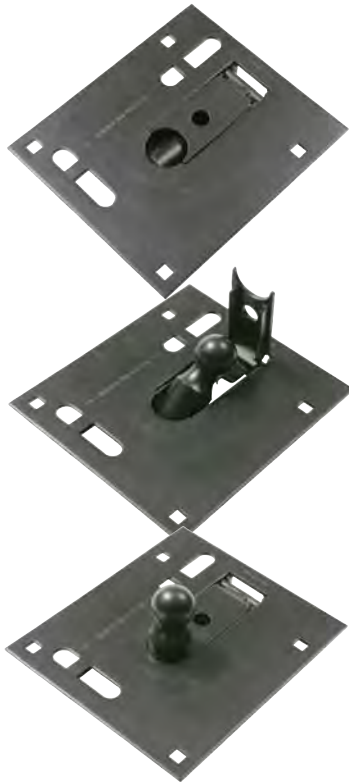


Description	Part #
25,000 lb. Capacity ‡ Gooseneck Hitch without Base Rail	31368
Custom Base Rails (requires Custom Bracket Kit (page 517) or 31563, below)	31323
Universal Install Kit	31563

‡ Limited to Vehicle Tow Rating; see Vehicle owners Manual.

Husky Folding Ball Gooseneck Hitch

Keep the bed of your truck free for any use with this versatile cam-over locking ball plate. Stores in place, allowing it to drop under the bed of your truck, leaving the bed free of obstructions. 2-5/16" installed hitch ball, 25,000 lbs. Gross Trailer Weight, 5,000 lbs Tongue Weight. Safety chain openings included. Hitch requires a hole to be cut in the bed of the truck; see the installation instructions. Installation kit required; it can be fabricated by the installer, or select one of the Installation Kits shown below (limited supply). *Do not exceed towing capacity of the tow vehicle*



Year	Description Model	Folding Ball Hitch		Installation Kit		# of Holes (Ø=No Drill)
		Part #		Part # (limited supply)		
Chevy/GMC Pickups, 2 & 4 WD						
07	New Body 2500 HD/3500, 6-1/2' & 8' Bed	31821		06967		2
01-07	Classic 2500 HD/3500 HD, 6-1/2' & 8' Bed	31821		06967		2
99-07	Classic Silverado/Sierra 1500 & 2500 LD & HD, 6-1/2' Bed. (Will not fit 05 1500HD 6' Box w/above frame fuel line)	31821		06967		Ø
99-07	Classic Silverado/Sierra 1500 & 2500 LD & HD, 8' Bed	31821		06967		2
88-00	C/K Pickup, 6-1/2' & 8' Bed (old body style)	31821		06985		4
Dodge Pickups, 2 & 4 WD						
94-02	Ram 1500, 2500 & 3500, 6-1/2' & 8' Bed (except 02 1500)	31821		06981		Ø
Ford Pickups, 2 & 4 WD						
04	F-150 Heritage (old body style) 6-1/2' & 8' Bed	31821		06982		2
97-03	F-150 & F-250 Lt. Duty (old body) 6-1/2' & 8' Bed	31821		06982		2
80-98	F-250 & F-350, 6-1/2' & 8' Bed	31821		06971		2
80-96	F-150, 6-1/2' & 8' Bed	31821		06986		2
Gooseneck Hole Cover, Bulk (plugs hole in your pickup bed when you remove hitch)					38959	

Color denotes Limited Supply



Stow-A-Fifth Wheel Adapter

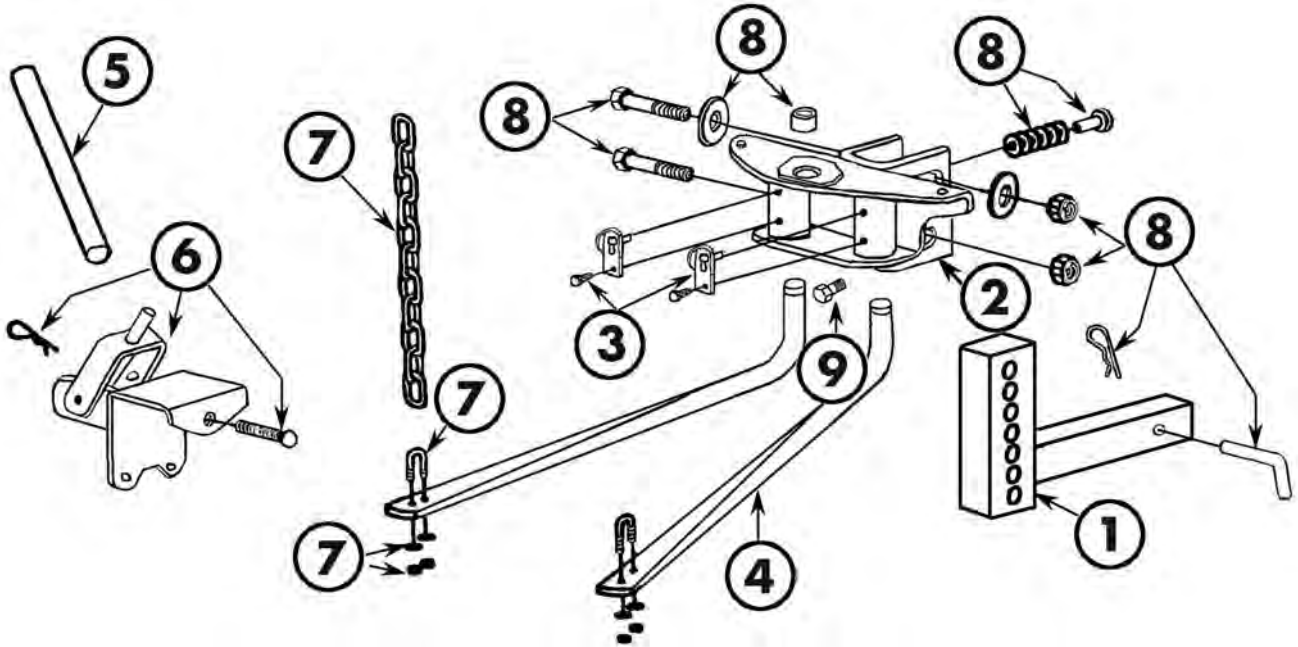
Change from Gooseneck trailer towing to Fifth Wheel trailer towing in minutes. For use with Husky 15K, 16K & 20K hitches. Can also be used with the Fifth Wheel EZ Roller. Note: a complete Stow-A-Fifth Wheel requires both the Adapter plus a Bed Support Kit. Order separately.

Description	Part #
Stow-A-Fifth Wheel Adapter for Stow-a-Gooseneck applications, without Bed Support Kit (Limited Supply)	07088
Stow-A-Fifth Wheel Adapter for B&W applications, without Bed Support Kit (Limited Supply, Canada only)	070881
Bed Support Kit, fits 99-09 Chevy Silverado & GMC Sierra, Classic 2500 HD/3500 HD, New 2500HD & 3500	07078
Bed Support Kit, fits 03-09 Dodge Ram 2500/3500 HD	07079





Round Bar Weight Distribution Hitch Parts



ROUND BAR PARTS		
Ref. #	Part #	Description
1	31518	10" Bolt-together Shank Assembly
2	31516	Head Assembly
3	31527	Spring Bar Retainer Pack (Sold 2/Pkg)
4	31519	400–600 lbs. Spring Bar Assembly (Sold Each; 2 required/hitch)
4	31520	501–800 lbs. Spring Bar Assembly (Sold Each; 2 required/hitch)
4	31521	801–1200 lbs. Spring Bar Assembly (Sold Each; 2 required/hitch)
4	31522	1201–1400 lbs. Spring Bar Assembly (Sold Each; 2 required/hitch)
5	31524	Lift Handle
6	31260	Chain Lift Bracket, includes two 1/2" x 3-1/2" Hex Bolts and two Chain Lift Brackets (one kit required/hitch)

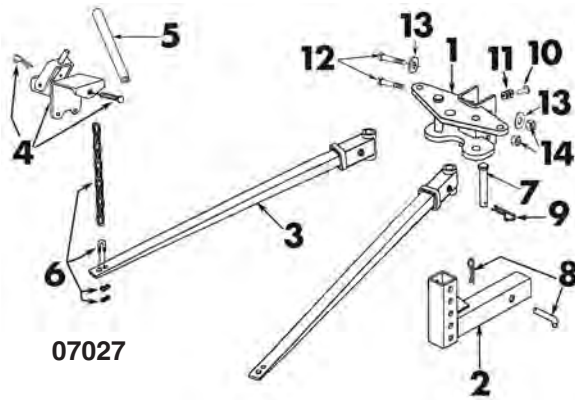
ROUND BAR PARTS		
Ref. #	Part #	Description
7	31526	Spring Bar 9 Link Chain Package, includes 2 each: 9 Link Lift Chains, 3/8" U-Bolts, 3/8" Flat Washers, 3/8" Lock Nuts
7	30698	(LS) Chain Service Kit, 11 Link
8	31525	Fastener Package for complete hitch, contains: (1) Reducer Bushing 1-1/4" to 1"; (1) Hitch Pin (5/8"); (3) Spring Clip (5/8"); (2) Hex Cap Screw Grade 5 (1/2"–13 x 3-1/2"); (2) Grade 5 Hex Bolt (3/4"–10 x 4-1/2"); (2) Nylon Insert Lock Nut (3/4"–10); (2) Conical Toothed Washer (3/4"); (1) Hardened Pin, 1/2" x 1-1/4"; (7) Hardened Flat Washer (1/2")
9	37153	5/8" x 1-1/2" Hex Bolt (Set Screw)

Weight Dist. Hitch Parts

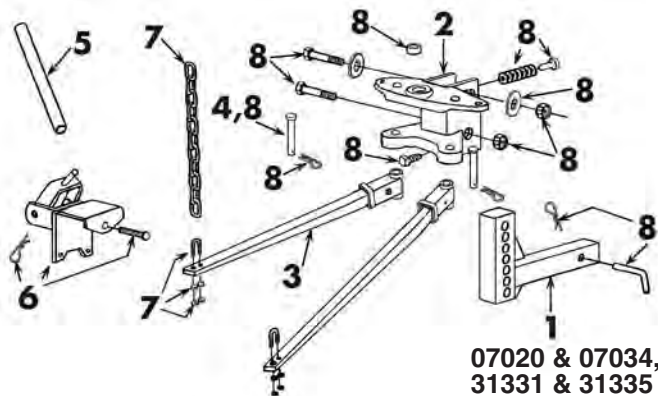


Pin Trunnion Weight Distribution Hitch Parts

HITCHES



07027 PIN TRUNNION BAR PARTS			
Ref. #	Part #	Description	
1	30683	(LS) Head Assembly	
2	30684	(LS) Shank Assembly	
3	30685	300-500 lb. Spring Bar Assembly (Black) (Sold Each; 2 required/hitch)	
4	31260	Chain Lift Bracket, includes two 1/2" x 3-1/2" Hex Bolts and two Chain Lift Brackets (one kit required/hitch)	
5	31524	Lift Handle	
6	31526	Spring Bar Chain Package, with quantities for a complete hitch (includes 2 each: Lift Chain, 3/8" U-Bolt, 3/8" Flat Washer, 3/8" Lock Nut)	
7	30687	(LS) Clevis Pin (Sold Each; 2 required/hitch)	
8	33790	Hitch Pin & Spring Clip, 5/8", 1/4rd	
9	33792	Spring Clip, Bulk, 5/8", Bulk	
10	37156	(LS) Hardened Pin, 1/2" x 1-1/4"	
11	37155	(LS) Hardened Washer, 1/2" (Sold Each; 3 required/hitch)	
12	30688	(LS) 1/2" x 3-1/4" Hex Bolt (Sold Each; 2 required/hitch)	
13	30689	1/2" Conical Washer	
14	30690	1/2" Lock Nut	



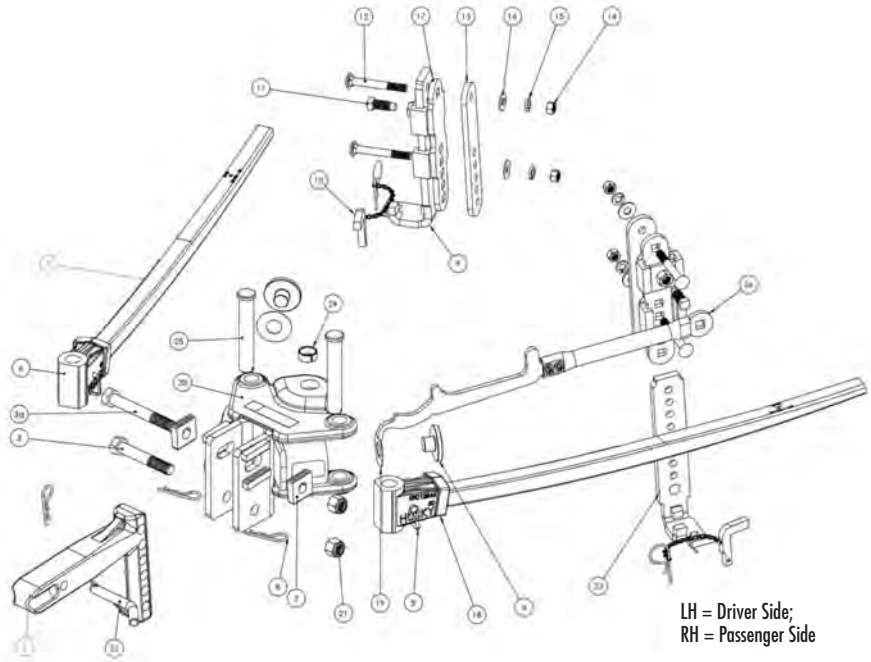
31331, 31335, 07020 & 07034 PIN TRUNNION BAR PARTS			
Ref. #	Part #	Description	
1	31518	Shank Assembly	
2	30580	(LS) Head Assembly	
3	31587	800 lb. Spring Bar Assembly with Trunnion Castings installed	
3	31588	1200 lb. Spring Bar Assembly with Trunnion Castings installed	
4	30695	Clevis Pin, 3/4" (Sold Each; 2 required/hitch)	
5	31524	Lift Handle	
6	31260	Chain Lift Bracket, includes two 1/2" x 3-1/2" Hex Bolts and two Chain Lift Brackets (one kit required/hitch)	
7	31526	Spring Bar Chain Package, with quantities for a complete hitch (includes 2 each: Lift Chain, 3/8" U-Bolt, 3/8" Flat Washer, 3/8" Lock Nut)	
8	31589	Fastener Package for complete hitch, contains: (1) 5/8" Hitch Pin; (5) Hair Pin (Spring Clip); (2) Hex Screw (3/4"-10 x 4-1/2"); (2) Hex Bolt (1/2"-13x3-1/2"); (2) Hex Lock Nut (3/4"-10); (2) Conical Tooth Washer (3/4"); (1) Reducer Bushing 1-1/4" to 1"; (1) Hardened Pin, 1/2" Dia. x 1-1/4"; (7) Hardened Washer, 1/2"; (2) Clevis Pin (3/4")	



Center Line Weight Distribution Hitch Parts

HITCHES

CENTER LINE HITCH PART PACKAGES		
Part #	Pkg	Description
	A	Kit, 501–1,400 lbs. Center Line Head Assembly, Shank & Frame Bracket System <i>NOTE: This is the complete 31390 head assembly, including all items in the part listing except the spring bars.</i>
31393	B	RH Frame and Spring Bar Bracket Assembly
31394	C	LH Frame and Spring Bar Bracket Assembly
31511	D	501–800 lb. Spring Bar Kit
31512	E	801–1,200 lb. Spring Bar Kit
31513	F	1,001–1,400 lb. Spring Bar Kit
31459	G	Kit, Center Line Customer Shim
31447	H	Kit, Center Line Complete Hardware
31448	I	Kit, Center Line LH Trunnion
31449	J	Kit, Center Line RH Trunnion
31450	K	Kit, Center Line Pressure Plate
31878	L	Spring Bar Lift Tool Kit
31672	M	"L" Pin Assembly Service Kit



LH = Driver Side;
RH = Passenger Side

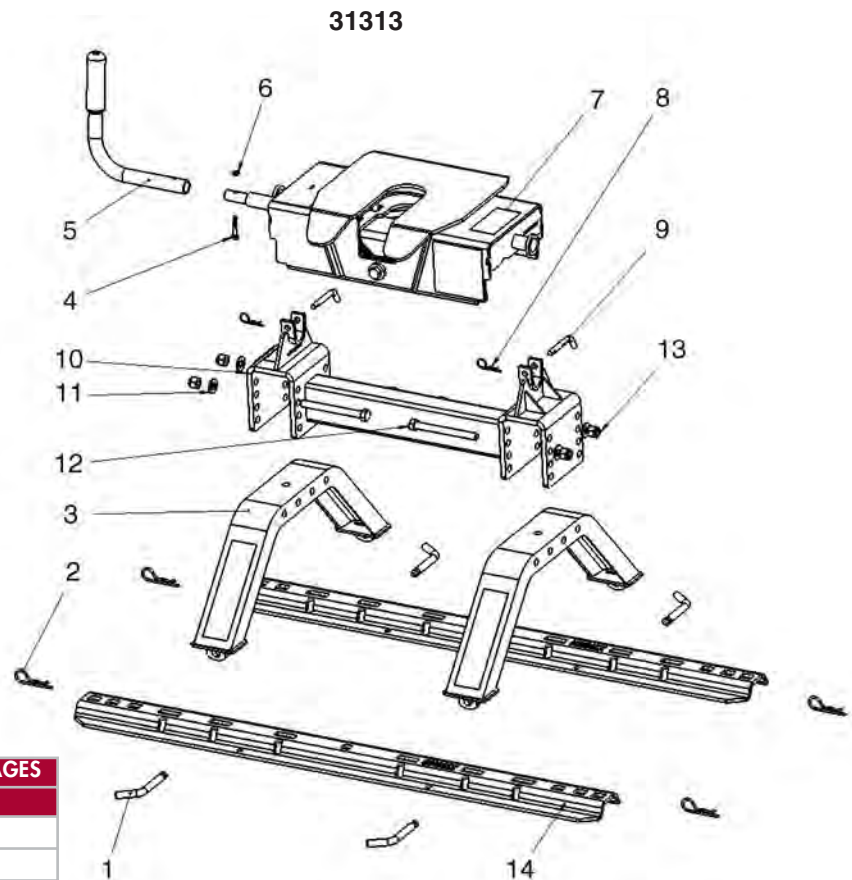
Ref.	Part Description	Pkg B Qty.	Pkg C Qty.	Pkg D Qty.	Pkg E Qty.	Pkg F Qty.	Pkg G Qty.	Pkg H Qty.	Pkg I Qty.	Pkg J Qty.	Pkg K Qty.	Pkg L Qty.	Pkg M Qty.
1	Shank Weldment (see the Shank Page)												
2	Head Tilt Adjusting Plate							2					
3	Bolt, Hex Head, 3/4"–10 x 4.5", Gr. 8							1					
4	Plate, Pressure										2		
5	1/4" Dia. Square "D" Safety Pin							2					
6	Trunnion, RH, Machined									1			
7	501–800 lb. Square Spring Bar			2									
	801–1,200 lb. Square Spring Bar				2								
	1,000–1,400 lb. Square Spring Bar					2							
8	Pin, 5/8" Hair	1	1					3	1	1			
9	RH Lift Bracket	1											
10	"L" Pin Assembly	1	1					2					2
11	Set Screw, Full Dog Point, 5/8–11 x 1.50 LG, Gr. 5, CZ	1	1										
12	Carriage Head Bolt, 1/2"–13 UNC x 4", Gr. 5, CZ	2	2					4					
13	Plate, Frame Mounting	1	1										
14	Nut, Hex 1/2–13 UNC, Gr. 5, CZ	2	2					4					
15	HD Lock Washer, 1/2" ID	2	2					4					
16	Washer, Flat .531 ID x 1.250 OD x .10 Thk., Type B	2	2					4					
17	Frame Bracket Weldment	1	1										
18	Trunnion, LH, Machined								1				
19	Shim						6						
20	WD W/Sway Control												
21	Nut, Nylon Lock, 3/4"–10 UNC, Gr. 5, CZ							2					
22	Hitch Pin, 5/8"							1					
23	LH Lift Bracket		1										
24	1-1/4" to 1" Bushing							1					
25	Clevis Pin, 3/4" x 5.75" Long								1	1			
26	Spring Bar Lift Tool Kit											1	
27	Bolt, Hex Head, 3/4"–10 x 5.5" Gr. 8							1					

Fifth Wheel Hitch Parts



16,000 lb. Capacity 16K S Fifth Wheel Hitch Parts (Silver Series)

HITCHES



31313 16K S FIFTH WHEEL HITCH PART PACKAGES

Part #	Description
31314	2 Uprights Package
31452	Cross Member Package
31453	16K S Head and Handle Package
31454	Handle Kit
31455	16K S Complete Hardware Kit
31456	16K S Hitch Head Retaining Pins
31458	Cross Member Hardware Kit

All products limited to Vehicle Tow Rating; see Vehicle Owners Manual. See www.huskytow.com for warranty information and tech support.

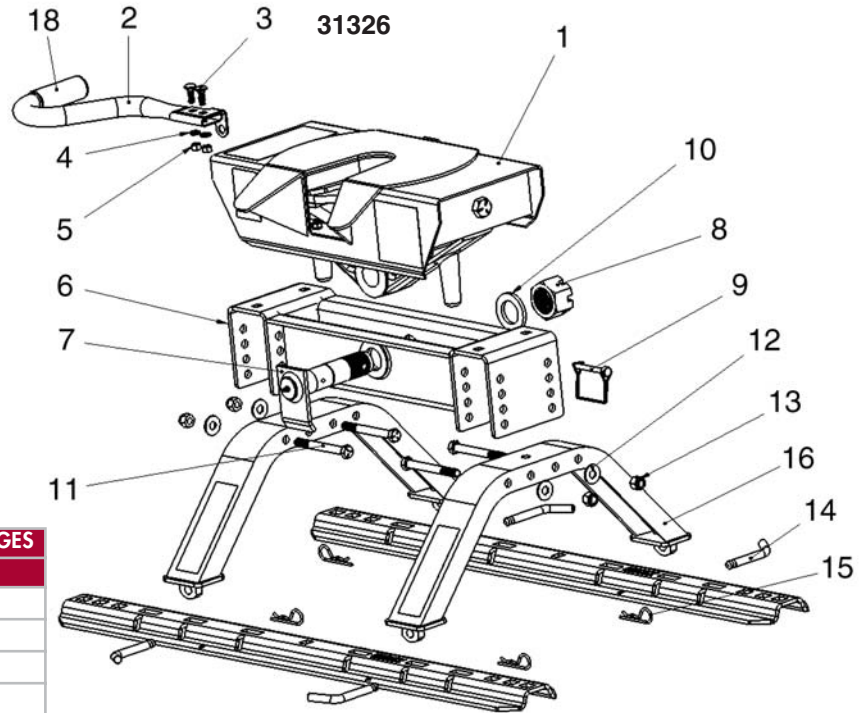
Package Description:		16K S Head & Cross Member Package	2 Uprights Package	Cross Member Package	16K S Head & Handle Package	Handle Kit	16K S Complete Hardware Kit	16K S Hitch Head Retaining Pins	Cross Member Hardware Kit
Ref.	Part Description	31313 Qty.	31314 Qty.	31452 Qty.	31453 Qty.	31454 Qty.	31455 Qty.	31456 Qty.	31458 Qty.
1	Pin, 1/2" Base Rail	4					4		
2	Pin, 1/2" Hair	4					4		
3	Upright	2	2						
4	Hex Head Bolt, 1/4-20 UNC x 1.375 LG	1			1	1			
5	Handle	1			1	1			
6	Nut, Nylon Lock, 1/4-20 UNC	1			1	1			
7	16K S 5th Wheel Head Assembly	1			1				
8	Pin, 3/8" Hair	2			2		2	2	
9	Pin, 3/8" Clevis	2			2		2	2	
10	Cross Member	1		1					
11	Washer, Flat .531 ID x 1.250 OD x .10 Thk	4		4			4		4
12	Bolt, Hex, 1/2-13 UNC x 5 LG	4		4			4		4
13	Nut, Nylon Lock, 1/2-13 UNC	4		4			4		4
14	Base Rail for 5th Wheel Hitch (not included)	N/A	N/A	N/A	N/A	N/A	N/A	N/A	N/A



Fifth Wheel Hitch Parts

16,000 lb. Capacity 16K W Fifth Wheel Hitch Parts (Silver Series)

HITCHES



31326 16K W FIFTH WHEEL HITCH PART PACKAGES

Part #	Description
31314	2 Uprights Package
31573	Kit, Handle
31574	Kit, Pivot Pin
31575	Kit, Cross Beam Hardware
31576	Kit, Base Rail Hardware
31580	Kit, Cross Beam
31581	Kit, Head & Yoke
31579	Kit, Handle Grip

All products limited to Vehicle Tow Rating; see Vehicle Owners Manual. See www.huskytow.com for warranty information and tech support.

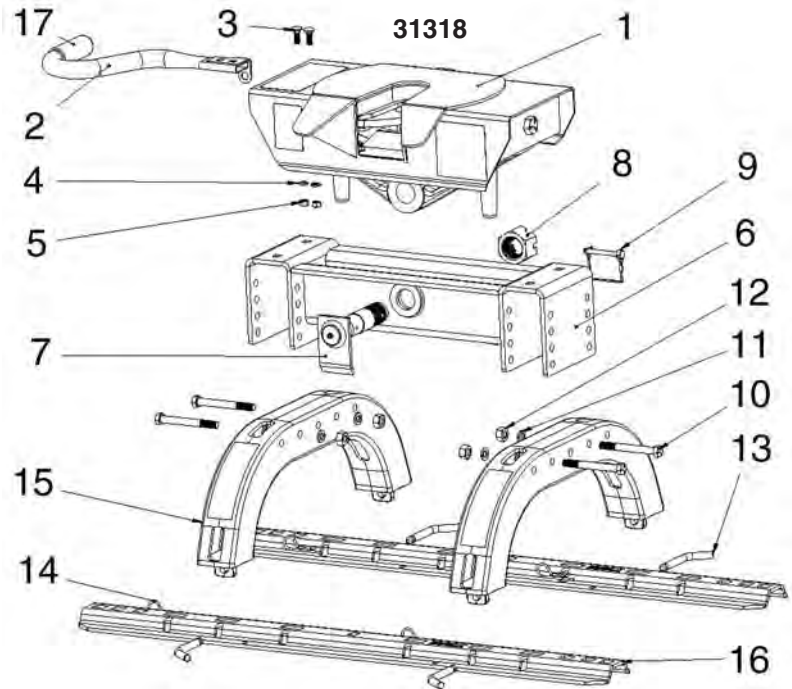
Package Description:	16K W Head & Yoke Box 1 of 2	Cross Member & Pivot Pin Box 2 of 2	Uprights	Kit, Handle	Kit, Pivot Pin	Kit, Cross Beam Hardware	Kit, Base Rail Hardware	Kit, Cross Beam	Kit, Head & Yoke	Kit, Handle Grip	
Ref.	Part Description	Qty.	Qty.	Qty.	Qty.	Qty.	Qty.	Qty.	Qty.	Qty.	
		31326 Box 1	31326 Box 2	31314	31573	31574	31575	31576	31580	31581	31579
1	16K 5th Wheel Head Assembly	1							1		
2	Handle	1			1						
3	Carriage Bolt, 3/8-16 x 1.25" L	2			2						
4	Lock Washer, 3/8" ID	2			2						
5	Hex Nut, 3/8-16	2			2						
N/A	Instructions, Kit Appropriate (Not Shown)	1			1	1	1	1	1		
6	Cross Member		1					1			
7	Pivot Pin		1		1						
8	Castle Nut, 1-1/2-12		1		1						
9	Safety Locking Pin		1		1						
10	Washer, Castle Nut Spacing		1		1						
11	Hex Head Bolt, 1/2-13 x 4.5" L		4			4					
12	Washer, 1/2" ID		4			4					
13	Nut, Nylon Lock, 1/2-13 UNC		4			4					
14	Clevis Pin, 1/2" OD x 2.50" LG		4				4				
15	Hair Pin		4				4				
16	Upright			2							
17	Base Rail for 5th Wheel Hitch (Not Included)	N/A	N/A	N/A	N/A	N/A	N/A	N/A	N/A	N/A	
18	Handle, Foam Grip	1			1					2	

Fifth Wheel Hitch Parts



26,000 lb. Capacity 26K W Fifth Wheel Hitch Parts (Silver Series)

HITCHES



31318 26K W FIFTH WHEEL HITCH PART PACKAGES

Part #	Description
31325	2 Uprights Package
31573	Kit, Handle
31574	Kit, Pivot Pin
31575	Kit, Cross Beam Hardware
31576	Kit, Base Rail Hardware
31577	Kit, Cross Member
31578	Kit, Head & Yoke
31579	Kit, Handle Grip

All products limited to Vehicle Tow Rating; see Vehicle Owners Manual. See www.huskytow.com for warranty information and tech support.

	Package Description:	26K W Head & Yoke Box 1 of 2	Cross Member & Pivot Pin Box 2 of 2	Uprights	Kit, Handle	Kit, Pivot Pin	Kit, Cross Beam Hardware	Kit, Base Rail Hardware	Kit, Cross Member	Kit, Head & Yoke	Kit, Handle Grip
		31318 Box 1	31318 Box 2	31325	31573	31574	31575	31576	31577	31578	31579
Ref.	Part Description	Qty.	Qty.	Qty.	Qty.	Qty.	Qty.	Qty.	Qty.	Qty.	Qty.
1	26K 5th Wheel Head Assembly	1								1	
2	Handle	1			1						
3	Carriage Bolt, 3/8-16 x 1.25" L	2			2						
4	Lock Washer, 3/8" ID	2			2						
5	Hex Nut, 3/8-16	2			2						
N/A	Instructions, Kit Appropriate (Not Shown)	1			1	1	1		1	1	
6	Cross Beam		1						1		
7	Pivot Pin		1			1					
8	Castle Nut, 1-1/2-12		1			1					
9	Safety Locking Pin		1			1					
10	Hex Head Bolt, 1/2-13 x 4.5" L		4				4				
11	Washer, 1/2" ID		4				4				
12	Nut, Nylon Lock, 1/2-13 UNC		4				4				
13	Clevis Pin, 1/2" OD x 2.50" LG		4					4			
14	Hair Pin		4					4			
15	Upright			2							
16	Base Rail for 5th Wheel Hitch (Not Included)	N/A	N/A	N/A	N/A	N/A	N/A	N/A	N/A	N/A	N/A
17	Handle, Foam Grip	1			1						2



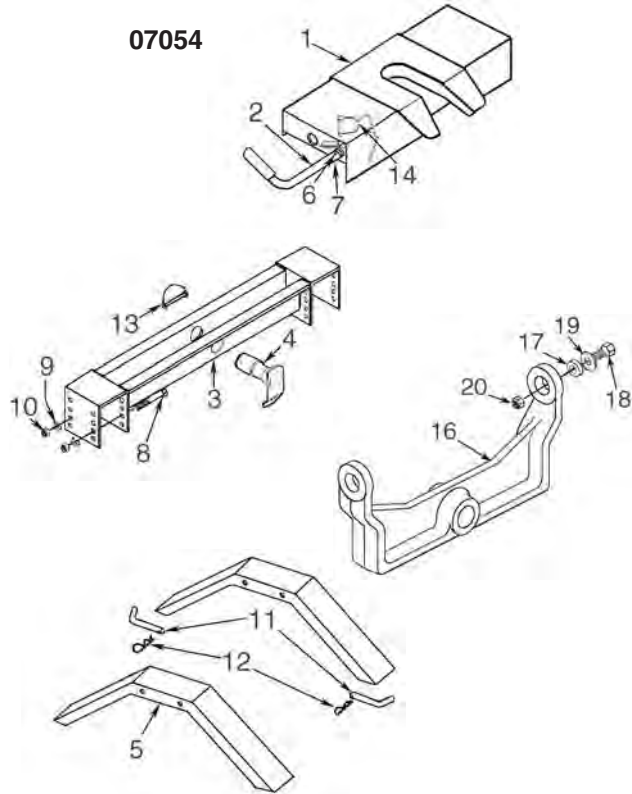
Fifth Wheel Hitch Parts

16,000 lb. Capacity Fifth Wheel Hitch Parts (Black Series)

HITCHES

07054 16K FIFTH WHEEL HITCH			
Ref. #	Part #	Description	Qty.
2	30532	Handle Assembly (Limited Supply)	1
4	39951	Pivot Pin Assembly, 4-3/16" L (Limited Supply)	1
11	30003	Base Rail Clevis Pin, Bag/4	1
17	30555	Yoke Bushing (Limited Supply)	2
19	30558	3/4" Wide Flat Washer (Limited Supply)	2
20	30559	3/4" Nylon Lock Nut (Limited Supply)	2

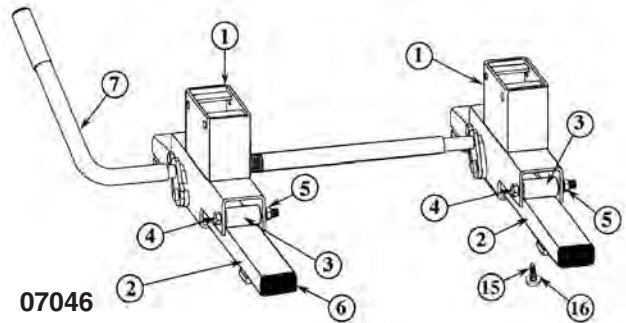
NOTE: "Qty" is number used in entire hitch. Sold each.



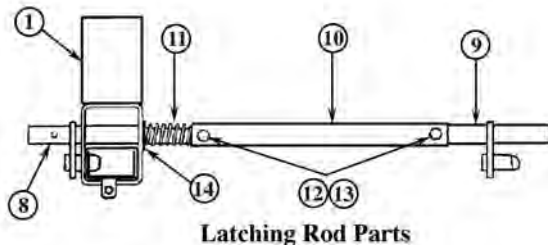
EZ Roller Parts (16K Fifth Wheel Hitch) (Black Series)

07046 16K EZ ROLLER PARTS			
Ref. #	Part #	Description	Qty.
1	39952	Upright Assembly (Limited Supply)	2
7	30581	Handle Assembly (Limited Supply)	1
9	39949	Long Latching Rod (Limited Supply)	1
10	39947	Outer Tube (Limited Supply)	1

NOTE: "Qty" is number used in entire hitch. Sold each.



07046

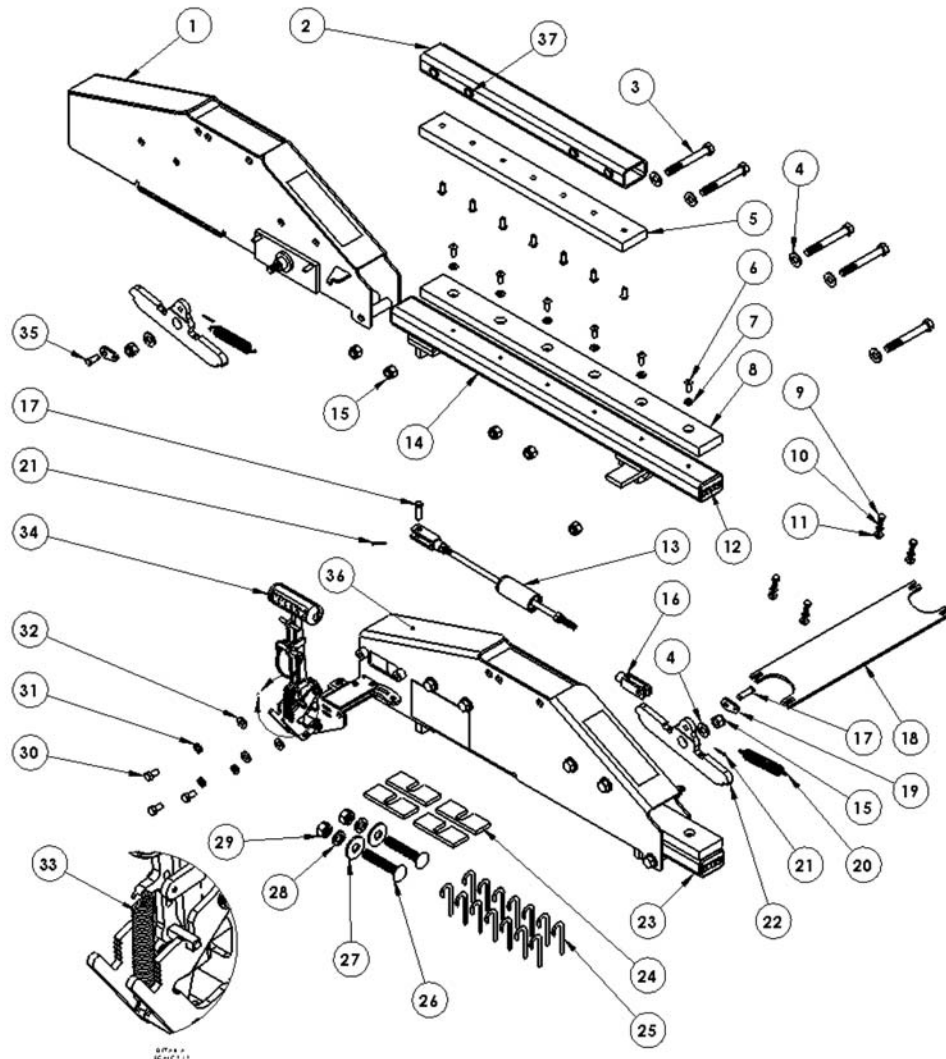


10-26 Glider Parts



Husky 10-26 Glider Parts (see next page for package contents)

HITCHES



HUSKY 10-26 GLIDER PART PACKAGES (See facing page for package contents)

Part #	Pkg	Description
	A	3-Box Set for 10-26 Glider (complete unit, includes all parts)
32043	B	Shim Kit (Thin)
32044	C	Kit, Service, 26K Husky 10 Pull Handle
32045	D	Kit, 3/8" Hardware Kit for 26K Husky 10 Pull Handle
32046	E	Kit, Service, 26K Husky 10 Gliding Pad
32047	F	Kit, Service, 26K Husky 10 Compression Cylinder Assembly
32048	G	Kit, Service, Husky 10 Handle Return Spring
32049	H	Kit, Service, 26K Husky 10 PS Pivot Assembly
32050	I	Kit, Service, Husky 10 Clevis/Cotter Pin
32051	J	Kit, Service, 26K Husky 10 Pivot Plate Assembly
32053	K	Kit, Service, 26K Husky 10, Housing Hardware (1/2")
32054	L	Kit, Service, Husky 10 End Tube Plugs
32056	M	Kit, Husky 10 Pivot Return Spring Service
32058	N	Pivot Plate Hardware Service Kit
32059	O	Kit, Service, Center Bolt



10-26 Glider Parts

Husky 10-26 Glider Parts (See previous page for illustration and ordering)

HITCHES

Ref.	Part Description	Pkg B Qty.	Pkg C Qty.	Pkg D Qty.	Pkg E Qty.	Pkg F Qty.	Pkg G Qty.	Pkg H Qty.	Pkg I Qty.	Pkg J Qty.	Pkg K Qty.	Pkg L Qty.	Pkg M Qty.	Pkg N Qty.	Pkg O Qty.
1	Passenger Side Housing Weldment														
2	Upper Support Tube														
3	Bolt, Hex 1/2 -13 x 4" Long, GR5, YZ										5				
4	1/2" Flat Washer					1		1			5				
5	Upper Glide Plate				1										
6	Socket Button Cap Screw, 5/16-18 UNC X 3/4", GR5, BO				13										
7	5/16" Flat Washer				6										
8	Lower Glide Plate				1										
9	Bolt, Hex Head 1/4 -20 x .75", GR5, YZ									4				4	
10	1/4" Lock Washer									4				4	
11	1/4" Flat Washer									4				4	
12	Husky Rubber Tube Plug											2			
13	Compression Cylinder Assembly					1									
14	Passenger Side Rail Weldment														
15	1/2-13 Lock Nut, GR5, YZ					1		1			5				
16	Clevis Rod End					1									
17	Pin, Clevis, 3/8 x 1.25, Steel, YZ					2			2						
18	Pivot Plate									1					
19	Extension Spring Pivot Plate					1		1							
20	Spring, Ext, 3/4" OD X 3.50" Long YZ					1		1					2		
21	Pin, Cotter, 7/64 X 1, Steel, YZ					2		1	3						
22	Pivot Stop Plate					1		1							
23	Driver Side Rail Weldment														
24	Spacer Plate														4
25	Hook Shim (Thin)	14													
26	5/8-11 UNC x 3.50 Carriage Head Bolt, GR. 5, BO														2
27	5/8" Flat Washer														2
28	5/8" Lock Washer														2
29	5/8-11 UNC Hex Nut														2
30	Bolt, Head, Hex, 3/8-16xX .75, GR5, YZ		3	3											
31	3/8" Lock Washer		3	3											
32	3/8" Flat Washer		3	3											
33	Spring, Ext, 1/2" OD x 2.75" Long YZ						1								
34	26K Husky 10 Pull Handle Assembly		1												
35	Pin, Clevis, 3/8 x .875, Steel, YZ							1	1						
36	Driver Side Housing Weldment														
37	1/2" ID Spacer										5				

Receiver Hitches



CLASS IV SUPER DUTY RECEIVER HITCHES

Designed to tow up to 10,000 lbs.‡ weight carrying and up to 12,000 lbs.‡ weight distributing. • Ideal for full size, long wheel base trucks and SUVs. • Standard 2" receiver. • Finish is corrosion resistant powdercoat polyester black paint. • Easy installation. • Uses many existing holes. *Now you can really maximize the towing capacity of your new full size pickup.*

CLASS III/IV RECEIVER HITCHES

For use on full size trucks, sport utilities, vans, passenger cars, & motorhomes. Designed for towing heavy trailers. • Class III/IV Receiver Hitches are for towing up to 6,000 lbs.‡ weight carrying and up to 10,000 lbs.‡ weight distributing. • Custom fit. • No drilling required on many applications. • Easy to install. • Finish is corrosion resistant powdercoat polyester black paint. • Standard 2" receiver.

‡ Under no circumstances do we recommend exceeding the towing vehicle manufacturer's recommended towing capacity.

Model	SubModel	Year	Receiver III, IV		Foot-note	Ø= No Drill	Towing Capacity (lbs. x 1000)		Round Tube	Hitch Style
			Order No.	Mfr. No.			Weight Carrying	Weight Distributing		
ACURA										
MDX		04-06	31481	82110	LS	Ø	3.5	5	•	CF
		01-03	31481	82110	LS		3.5	5	•	CF
BUICK										
ENCLAVE	All	09-11	31486	82541	LS	Ø	4	5	•	CF
CHEVROLET										
PICKUP C/K	1500	88-98	08103	81030	LS	Ø	5	10	•	CF
PICKUP C/K	1500 Long & Short Bed, Multi-Fit Hitch	88-98	08227	82270	LS	Ø	5	7.5		MF
BLAZER (Downsize)		98-05	08169	81690	LS	Ø	4	6	•	CF
SILVERADO (New Body)	1500LD	07-11	082123	82123	LS	Ø	6	10	•	CF
	2500/3500HD	07-10	08217	82170	LS	Ø	6	10	•	CF
		07-10	31482	82151	LS	Ø	10	12	•	CF
SILVERADO CLASSIC	1500LD	99-07	082123	82123	LS	Ø	6	10	•	CF
		99-07	31488	82510	LS	Ø	10	12		CF
	1500HD only	01-07	08217	82170	LS	Ø	6	10	•	CF
		01-07	31482	82151	LS	Ø	10	12	•	CF
SILVERADO	1500HD, Multi-Fit Hitch	99-07	08227	82270	LS	Ø	5	7.5		MF
TRAVERSE	All	09-11	31486	82541	LS	Ø	4	5	•	CF
COLORADO	All	04-10	31489	82641	LS	Ø	4	6	•	CF
EQUINOX	All	05-11	08254	82540	LS	Ø	4		•	CF
EXPRESS VAN	All	96-11	08139	81390	LS	Ø	5	10		CF
AVALANCHE	Z66	02-06	08199	81990	LS	Ø	6	10	•	CF
SUBURBAN	All	00-06	08199	81990	LS	Ø	6	10	•	CF
TAHOE	All (except w/Right Frame Canister)	00-06	08199	81990	LS	Ø	6	10	•	CF
CHRYSLER										
TOWN & COUNTRY	Van	08-10	31493	82683	LS	Ø	4	5		CF
	Van	08-10	31832	82684	LS	Ø	4	5		CF
	Van, w/o Stow & Go Seats	96-06	08218	82180	LS		3.5	5	•	CF
VOYAGER, GRAND VOYAGER	Van	01-03	08218	82180	LS		3.5	5	•	CF
DODGE										
DAKOTA PICKUP		05-11	08280	82800	LS	Ø	5	7.5		CF
		87-04	08147	81470	LS,10		5	7.5	•	CF
DURANGO		98-03	08160	81600	LS	Ø	5	7.5		CF
RAM PICKUP	1500 (Old Body)	94-01	08178	81780	LS	Ø	6	10	•	CF
	1500 Short Bed	94-01	08227	82270	LS		5	7.5		CF
	1500 Long Bed	94-01	08227	82270	LS	Ø	5	7.5		CF
RAMCHARGER	All, Multi-Fit Hitch	74-85	08227	82270	LS		5	7.5		MF
CARAVAN, GRAND CARAVAN	Van	08-10	31493	82683	LS	Ø	4	5		CF
CARAVAN, GRAND CARAVAN	Van, w/o Stow & Go Seats	96-06	08218	82180	LS		3.5	5	•	CF
SPRINTER - 2500	144"/170" WB w/Standard Bumper	07-10	31490	82763	LS	Ø	5	7.5		CF
	144"/170" WB w/Step Bumper	07-10	31499	82762	LS	Ø	5	7.5		CF
SPRINTER - 3500	170" WB w/Standard Bumper	07-10	31490	82763	LS	Ø	5	7.5		CF
	170" WB w/Step Bumper	07-10	31499	82762	LS	Ø	5	7.5		CF

Receiver Hitches

HITCHES

Model	SubModel	Year	Receiver III, IV		Foot-note	Ø = No Drill	Towing Capacity (lbs. x 1000)		Round Tube	Hitch Style
			Order No.	Mfr. No.			Weight Carrying	Weight Distributing		
FORD										
ECONOLINE	Van	92-10	31495	74080	LS		5	10	•	CF
RANGER		83-09	31496	81620	LS		4	6	•	CF
F-150	New Body	09-11	31491	82843	LS	Ø	6	12		CF
		06-08	082842	82842	LS	Ø	6	12		CF
	FLARESIDE	97-03	08176	81760	LS	Ø	6	10		CF
		97-03	08250	82500	LS	Ø	10	12		CF
	Multi-Fit Hitch	97-03	08227	82270	LS	Ø	5	7.5		MF
F-150 SUPERCREW		01-03	08176	81760	LS	Ø	6	10		CF
		01-03	08250	82500	LS	Ø	10	12		CF
F250 LIGHT DUTY		97-98	08176	81760	LS	Ø	6	10		CF
		97-98	08250	82500	LS	Ø	10	12		CF
F250HD	Multi-Fit Hitch	97-98	08227	82270	LS		5	7.5		MF
F350 SUPER DUTY	All	2011	08176	81760	LS	Ø	6	10		CF
F350 SUPER DUTY	All	2011	08250	82500	LS, 47	Ø	10	12		CF
F250 SUPER DUTY	Multi-Fit Hitch	99-08	08227	82270	LS		5	7.5		MF
	All	99-11	08176	81760	LS	Ø	6	10		CF
F250 SUPER DUTY	All	2011	08250	82500	LS, 47	Ø	10	12		CF
F-SERIES	All, Multi-Fit Hitch	60-96	08227	82270	LS		5	7.5		MF
BRONCO	All, Multi-Fit Hitch	78-96	08227	82270	LS		5	7.5		MF
ESCAPE	All (including Hybrid)	05-10	31483	82211	LS	Ø	4	5	•	CF
FLEX	All	09-10	31498	82215	LS	Ø	5		•	CF
GMC										
PICKUP, C/K	Long & Short Bed, Multi-Fit Hitch (exc. 88-91 Crew Cab)	88-98	08227	82270	LS	Ø	5	7.5		MF
SIERRA	All, Multi-Fit Hitch	99-07	08227	82270	LS	Ø	5	7.5		MF
SIERRA	New Body Style, 1500, 2500LD	99-09	082123	82123	LS	Ø	6	10	•	CF
SIERRA	2500HD/3500 All	01-07	08217	82170	LS	Ø	6	10	•	CF
SIERRA	2500HD/3500 All	01-08	31482	82151	LS	Ø	10	12	•	CF
SIERRA	1500, 2500 All	99-07	31488	82510	LS	Ø	10	12		CF
SAVANA VAN	1500, 2500 & 3500 Series	96-11	08139	81390	LS	Ø	5	10		CF
ACADIA	All	07-09	31486	82541	LS	Ø	4	5	•	CF
YUKON, YUKON XL	Except w/Right Frame Canister	00-06	08199	81990	LS	Ø	6	10	•	CF
CANYON	All	04-11	31489	82641	LS	Ø	4	6	•	CF
ENVOY	w/Factory Tow Package	98-01	08169	81690	LS	Ø	4	6	•	CF
JIMMY	Down size	98-01	08169	81690	LS	Ø	4	6	•	CF
HONDA										
PILOT		03-08	31481	82110	LS	Ø	3.5	5	•	CF
ODYSSEY		99-09	31485	82400	LS	Ø	3.5	5	•	CF
INFINITI										
i350, i280, i290 & i370	All	06-08	31489	82641	LS		4	6	•	CF
ISUZU										
I-SERIES PICKUP	All	06-09	31489	82641	LS		4	6	•	CF
JEEP										
GRAND CHEROKEE	All	99-04	08180	81800	LS	Ø	5	8	•	CF
LIBERTY	All	02-07	08223	82230	LS	Ø	3.5	5		CF
WRANGLER	All	07-11	31484	82371	LS	Ø	3.5			CF
LEXUS										
RX 330	All	04-06	31479	81310	LS	Ø	3.5	4	•	CF
RX 350	All	07-09	31479	81310	LS	Ø	3.5	4	•	CF
RX 400H	Hybrid	06-09	31479	81310	LS	Ø	3.5	4	•	CF
LINCOLN										
MARK LT	All	07-08	082842	82842	LS	Ø	6	12		CF
MAZDA										
PICKUP		94-09	31496	81620	LS		4	6	•	CF
TRIBUTE		05-09	31483	82211	LS	Ø	4	5	•	CF
MERCURY										
MARINER	All including Hybrid	05-09	31483	82211	LS	Ø	4	5	•	CF

Receiver Hitches & Tubing

HITCHES

Model	SubModel	Year	Receiver III, IV		Foot-note	Ø= No Drill	Towing Capacity (lbs. x 1000)		Round Tube	Hitch Style
			Order No.	Mfr. No.			Weight Carrying	Weight Distributing		
NISSAN										
FRONTIER	All	05-09	08125	81250	LS	Ø	5	6		CF
TITAN	All	04-09	08274	82740	LS	Ø	6	10	•	CF
OLDSMOBILE										
BRAVADA		98-01	08169	81690	LS	Ø	4	6	•	CF
PLYMOUTH										
TRAIL DUSTER	All, Multi-Fit Hitch	74-85	08227	82270	LS		5	7.5		MF
VOYAGER, GRAND VOYAGER	Van	96-99	08218	82180	LS		3.5	5	•	CF
PONTIAC										
TORRENT	Van	06-09	08254	82540	LS	Ø	4		•	CF
SATURN										
OUTLOOK	All	07-09	31486	82541	LS	Ø	4	5	•	CF
VUE	All Excl. Redline	02-07	08254	82540	LS	Ø	4			CF
SUZUKI										
EQUATOR	All	09-11	08125	81250	LS	Ø	5	6		CF
TOYOTA										
HIGHLANDER	All (includes Hybrid)	08-10	31494	81312	LS	Ø	5	6	•	CF
	All (includes Hybrid, excludes Sport model)	04-07	31479	81310	LS	Ø	3.5	4	•	CF
TACOMA	All	05-10	08279	82790	LS	Ø	5	6		CF
	All	95-04	08159	81590	LS	Ø	5		•	CF
TUNDRA PICKUP	All	07-10	31480	81881	LS	Ø	6	10	•	CF
	All, Multi-Fit Hitch	00-06	08227	82270	LS		5	7.5		MF
SIENNA	Van	04-11	08270	82700	LS	Ø	3.5	4	•	CF
VOLKSWAGEN										
ROUTAN	All	09-11	31493	82683	LS		4	5		CF

Hitch Style: CF = Custom Fit. MF = Multi-Fit. **Footnotes:** 10 = Without roll pan. 47 = Will not fit with 18" spare.



RECEIVER TUBING WITH COLLAR

- Cast steel collar on 2" • Solid stress collar opening • 5/8" hitch pin hole

Order #	Mfr. #	Description
34902	#RT25806B	2" I.D. x 6" Receiver Tube, Black
34903	#RT25812B	2" I.D. x 12" Receiver Tube, Black
34904	#RT25824B	2" I.D. x 24" Receiver Tube, Black
34905	#RT25836	2" I.D. x 36" Receiver Tube, Plain
34906	#RT25848	2" I.D. x 48" Receiver Tube, Plain

RECEIVER EXTENSIONS

- Cast steel collar. • Accepts all 2" hitch accessories.
- Reduces Hitch Capacity by 1/3.
- Black powder coat finish.
- 5/8" hitch pin hole. • Reduced hitch capacity.
- Step models include 6" x 17" welded steel step with diamond tread.

Order #	Mfr. #	Description
31379	#1804003	7" Receiver Extension
31380	#1804005	12" Receiver Extension
31381	#1804007	18" Receiver Extension



Hitches • Pintle Hook

HITCHES



STEP BUMPER HITCH

• Fits most full sized trucks with step bumpers. • Accepts many 2" square ball mounts or accessories. • Black powder coat finish.

Description	Part #
Step Bumper Hitch; Max. TW: 350 lbs.; Max. GTW: 3,500 lbs	31924



07528

UNIVERSAL RECEIVER-STYLE STEP BUMPER HITCH

3,500 lbs.‡ gross weight; 300 lbs.‡ tongue weight. **07528** is a universal fit flat mounting plate with 4-hole attachment points; requires minimum 4-1/2" deep flat mounting surface. Some drilling required.

Description	Part #
2" Receiver Style Tube for Step Bumper (Limited Supply)	07528

UNIVERSAL FIT HITCH—FRAME MOUNTING



Designed for accessories such as bikes and cargo racks. Can also be used for towing a second trailer (if state laws permit). Adjusts from 47" to 77" and fits almost any travel trailer frame. • Maximum Gross Trailer weight is 3500 lbs. • Tongue weight is 350 lbs. • Black powder coated. • Some welding required. • Do not exceed RV frame capabilities.

Description	Part #
Universal Fit Hitch, Frame Mounting	31928



TRAVEL TRAILER HITCH

Easy to install. • 2" receiver opening. • Mounts to 4" square tube bumper of RV. • Zinc plated hardware included. • Max. GTW: 3,500 lbs. • Tongue weight: 350 lbs. • Class II. • Assembly required.

Description	Part #
Travel Trailer Hitch	31926



RV BUMPER RECEIVER ADAPTER

• Fits standard 4" & 4-1/2" square RV bumpers. • Zinc plated hardware included. • Ideal for bike carriers and other accessories. • Accepts 2" tubes. • Assembly required.

Description	Part #
RV Bumper Receiver Adapter	31925



NEW!

5-TON RECEIVER MOUNT PINTLE HOOK

• Single piece drop forged lower jaw is designed with an integral shank to fit 2" receiver tubes. • Black powder coat finish. • Drawbar Eye Dimensions - 2" to 3" I.D. with 1-1/4" to 1-5/8" diameter section. • Individually boxed with instruction sheet and capacity decals.

Description	Part #
Pintle Hook, Receiver-Mount, 5 Ton	31378

Pintle Accessories



8-TON COMBINATION HITCH

• Drop forged. • Black powder coat finish. • Forged steel ball. • Interchangeable hitch balls. • Drawbar Eye Dimensions - 2-1/2" to 3" I.D. with 1/4" to 1-9/16" diameter section. • Individually boxed with drilling template and capacity decals.

Description	Part #
8-Ton Combination Hitch with Mounting Kit	
1-7/8" Ball Size, 3,000 lbs. Max. Vertical Load, 16,000 lbs. Max. GTW	31922
2" Ball Size, 3,000 lbs. Max. Vertical Load, 16,000 lbs. Max. GTW	31920
2-5/16" Ball Size, 3,000 lbs. Max. Vertical Load, 16,000 lbs. Max. GTW	31919
Replacement Ball for Combination Hitch	
2" Ball Size	31911
2-5/16" Ball Size	31910



RIGID-TYPE PINTLE HOOK

• Drop forged steel. • Black powder coat. • Drawbar Eye Dimensions - 2" to 3" I.D. with 1-1/4" to 1-5/8" diameter section. • Individually boxed. • Includes mounting info., spec. sheet, drilling template, & vehicle capacity decal.

Description	Part #
5-Ton Pintle Hook with Mounting Kit; 2,000 lbs. Max. Vertical Load; 1,000 lbs. Max. GTW	31912



PINTLE HOOK MOUNT

• High and low positioning.

Description	Part #
Pintle Mounting Plate, 1-3/4" Drop	
Pintle Hook Mount, 2" x 8-5/8" Shank' 5" x 7-3/8" Plate; 3 Pair of Holes, 600 lbs. Max. Vertical Load.; 6,000 lbs. Max. GTW (Limited Supply)	06991
Pintle Mounting Plate, Continuous Welds, Black Powder Coat Finish, Welded Support Bracket	
Pintle Hook Mount, 2" x 9" Solid Shank' 5" x 7-3/8" Plate; 4 Pair of Holes, 2,000 lbs. Max. Vertical Load; 10,000 lbs. Max. GTW	31913
Pintle Hook Mount, 2" x 12-1/4" Solid Shank' 5" x 12-1/2" Plate; 7 Pair of Holes, 2,000 lbs. Max. Vertical Load; 10,000 lbs. Max. GTW	31921
Pintle Hook Mount, 2-1/2" x 12" Tubular Shank' 5" x 6-1/8" Plate; 3 Pair of Holes, 3,200 lbs. Max. Vertical Load; 16,000 lbs. Max. GTW	31914



WELDED 4-BOLT MOUNT DRAWBAR

• Alloy steel forging • Black powder coat finish • Welded to 4 hole square mounting plate

Description	Part #
Welded 4-Bolt Mount Drawbar, 2-1/2" I.D. Eye; 5-1/2" O.D. Eye; 1-1/2" Section Drawbar; 7,000 lbs. Max. Vertical Load; 42,000 lbs. Max. GTW	31909