

In Section N:	Hitches	Hitch Accessories	Car Towing	Levels	Mirrors & Safety	Brake Controls	Towing Electrical	Brake & Wheel	Automotive
---------------	---------	-------------------	------------	--------	------------------	----------------	-------------------	---------------	------------

**SUPERHITCH**

**AN UNBEATABLE TWIN BEAM SUPERTRUSS RECEIVER EXTENSION SYSTEM CREATES THE HIGHEST RATING IN THE INDUSTRY**

- Lifetime mfr. warranty. • SuperHitch frame mounted receiver rated up to 17,000 lbs. with weight distribution in either the upper or lower receivers (when used without SuperTruss extension). • Extension towing capacity up to 12,000 lbs. with 48" SuperTruss receiver extension.\* • SuperTruss extensions available in convenient lengths (sold separately). • Designed for up to 12' campers.
- Industry exclusive, patented lateral support turnbuckle safety chain system.
- Both the SuperHitch frame mount receiver and the SuperTruss Receiver extensions use industry-standard 2" x 2" ball mounts. • Eliminates the need for two ball mounts.\*\* • Pre-drilled for TorqLift Camper Tie Downs.

\*12,000 lb. pulling capacity, 1,200 lb. tongue weight achieved only when used with weight distribution type system. See Dealer for details. Weight carrying capacity on 48" extension, 6,000 lb. pull, 600 lb. tongue weight. Consult your owners manual for specific towing capacity. Your truck and trailer weight cannot exceed your vehicle mfr.'s towing, cargo, or GCVWR. \*\* (Camper on, camper off, height variance) obtained by using the ball mount in either upper or lower SuperHitch receiver.



CATCH PRODUCT VIDEO  
torqlift.com



No drilling on most applications

**WARNING!** This Towing System does not permit you to exceed your vehicle Manufacturer's specified tow ratings.

Denotes limited supply!

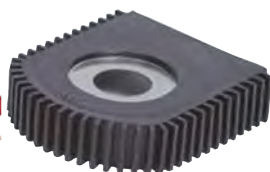


CLASS V ORIGINAL SUPERHITCH RECEIVER APPLICATION CHART 17,000 / 1,700							
Model	Year	Bed Length	Order #	Mfr. #	Notes	Hole to Drill	
<b>FORD</b>							
F250/F350	99-12	Long or Short Bed	<b>39097</b>	#F1002		No Drill	
F450/F550 Cab & Ch	00-11	Aftermarket Bed	s/o	F1003	H	Up To 8	
F450	08-12	w/Factory 8' F350 Bed	<b>39097</b>	#F1002		No Drill	
<b>DODGE</b>							
2500/3500	94-02	Long Bed	<b>39098</b>	#D1100		No Drill	
2500/3500	94-02	Short Bed	<b>39098</b>	#D1100	1-H	Up To 10	
2500/3500 HD	03-12	Long Bed w/ Factory Hitch	<b>39640</b>	#D1102	1,3	No Drill	
2500/3500 HD	03-12	Short Bed w/ Factory Hitch	<b>39640</b>	#D1102		No Drill	
2500/3500 HD	03-12	Long Bed w/o Hitch	s/o	D1101	1	No Drill	
2500/3500 HD	03-12	Short Bed w/o Hitch	s/o	D1101		No Drill	
<b>CHEVY/GMC; 2500-3500 HD</b>							
Classic	01-07	Short Bed	s/o	C1204	4	No Drill	
Classic & New Body	01-10	Long Bed	<b>30671</b>	#C1205		No Drill	
New Body	07-10	Short Bed	<b>30772</b>	#C1206		No Drill	
2500/3500 HD	11-12	Long Bed - All cabs)	<b>31961</b>	#C1208		No Drill	
2500/3500 HD	11-12	Short Bed - All cabs)	<b>31962</b>	#C1209	5	No Drill	

NOTES: 1. Spare tire hanger & tailpipe modification may be necessary. 3. Will **only** work with **Factory welded 2" x 2"** receiver hitch. 4. 2007 Classic model only, for 2007 new body style use part# C1206. 5. Works with vehicles that have factory wheels and tires up to 18". H. Indicates that drilling a hole will be required, and the number following designates the total number of drill holes required for installation.

SUPERTRUSS EXTENSIONS				
Order #	Mfr. #	Description	Dead Wt. Rating GTWA <sup>A</sup> / GVWB <sup>B</sup>	Weight Distrib. (Required) GTWA / GVWB
s/o	E1521	21" Extension	750 / 7,500	1,400 / 14,000
<b>39105</b>	#E1524	24" Extension	750 / 7,500	1,400 / 14,000
<b>39106</b>	#E1528	28" Extension	750 / 7,500	1,200 / 12,000
<b>39107</b>	#E1532	32" Extension	650 / 6,500	1,200 / 12,000
<b>39108</b>	#E1536	36" Extension	650 / 6,500	1,200 / 12,000
<b>39109</b>	#E1542	42" Extension	600 / 6,000	1,200 / 12,000
<b>39110</b>	#E1548	48" Extension	600 / 6,000	1,200 / 12,000
s/o	E1560	60" Extension	500 / 5,000	1,000 / 10,000

NOTES: A. Trailer's total tongue weight when fully loaded. B. Trailer's total weight when fully loaded.



**HUSKY SHIN PROTECTOR**

No more bruised shins. The Husky Shin Protector is made from soft rubber that fits securely over the tow bar tongue. Fits easily between tow ball and tow bar tongue.

**34869** Shin Protector #34869 1

# COUPLERS

## TOWING & SAFETY

N

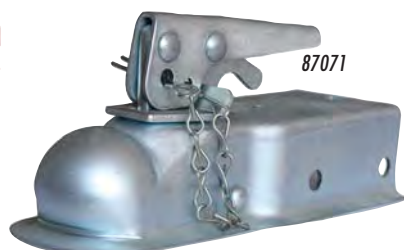
In Section N:	Hitches	Hitch Accessories	Car Towing	Levels	Mirrors & Safety	Brake Controls	Towing Electrical	Brake & Wheel	Automotive
---------------	---------	-------------------	------------	--------	------------------	----------------	-------------------	---------------	------------

## HUSKY Straight Trailer Couplers

Husky straight couplers are perfect for safe towing of 1-7/8" and 2" trailers. Husky straight couplers are built to the highest industry standards, tested and certified to meet VESC Reg. V-5, SAE Erg. J-684F. For increased safety, each Husky straight coupler includes a safety pin as an additional means of securing the ball clamp in a locked position (safety pin is required to be used at all times) and a safety chain to eliminate loss of the safety pin. The quick release assembly allows for fast and safe locking and unlocking of the ball clamp for convenient hook-up and disconnect. Sleeve packaged.



87070



87071



87072



87074



87073



87075



87076

Ball Size	Inside Width	Max. Gross Trailer Weight	Part #
1-7/8"	2"	2,000 lbs. (908kg)	87070
1-7/8"	2-1/2"	2,000 lbs. (908kg)	87071
1-7/8"	3"	2,000 lbs. (908kg)	87072
2"	2"	3,500 lbs. (1,589kg)	87073
2"	2-1/2"	3,500 lbs. (1,589kg)	87074
2"	3"	3,500 lbs. (1,589kg)	87075
2"	3"	6,000 lbs. (2,724kg)	87076

‡Note: weight rating is limited to Vehicle Tow Rating; see Vehicle owners Manual.

### Coupler Repair Kits

Coupler Repair Kit for 1-7/8" Couplers (2,000 lbs.; 908kg)	87082
Coupler Repair Kit for 2" Couplers (3,500 lbs.; 1,589kg)	87083
Coupler Repair Kit for 2" Couplers (6,000 lbs.; 2,724kg)	87084



Repair Kits

## Coupler Accessories



70431



70432

Description	Part #
<b>COUPLER GRIP</b>	
Bolts onto coupler with universal mounting holes. Fits 1-7/8" and 2" couplers. The coupler grip provides a convenient and safer way to guide trailer tongue to and from the coupler ball. Ideal for personal watercraft and other light tongue weight trailers. Zinc-plated Tuffplate® non-corrosive finish with large comfortable grip.	
Coupler Grip	70431
<b>BUMP-ME® COUPLER-VEHICLE CUSHION</b>	
Absorbs the blow between the coupler and the towing vehicle when the hook-up is misjudged. <i>Bump-Me®</i> is held on by friction grip by slipping on the flange of the coupler. Molded with a UV inhibitor, it resists deterioration and stays flexible in all kinds of weather. Patented.	
Bump-Me® Coupler-Vehicle Cushion	70432

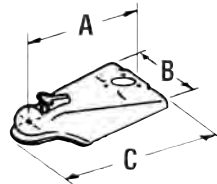
In Section N:	Hitches	Hitch Accessories	Car Towing	Levels	Mirrors & Safety	Brake Controls	Towing Electrical	Brake & Wheel	Automotive
---------------	---------	-------------------	------------	--------	------------------	----------------	-------------------	---------------	------------

## HUSKY A-Frame Trailer Couplers

A-frame couplers are designed to be welded to trailers with 50 degree angle trailer frames and are rated at SAE Class III and IV applications. All A-frame couplers include a jack mount hole for easy installation. Most include a chain to eliminate loss of the safety pin.

Description	Part #
2" A-Frame Coupler with Chain, 5000 lb.	<a href="#">87077</a>
2" A-Frame Coupler, Flat Lock, 5000 lb.	<a href="#">87079</a>
2-5/16" A-Frame Coupler, 10,000 lb.	<a href="#">87080</a>
2-5/16" A-Frame Coupler, 14,000 lb.	<a href="#">87081</a>

‡Note: weight rating is limited to Vehicle Tow Rating; see Vehicle owners Manual.



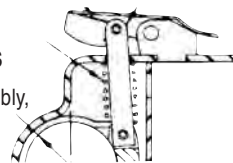
**Atwood A-Frame Coupler for 2" Ball:**  
**70085** Painted, Weld-On, Yoke Style, 5,000 lbs. Capacity Class III; A=12-3/8"; B=9-1/4"; C=14" #80072 1  
**79339** Painted, Weld-On, Flip-Latch Style, 8,000 lbs. Capacity Class IV; A=9-7/8"; B=9-3/4"; C=11-7/8" #88555 1  
**Atwood A-Frame Coupler for 2-5/16" Ball:**  
**70087** Painted, Weld-On, Thumb-Latch Style, 10,000 lbs. Capacity Class IV; A=11"; B=10-7/8"; C=12-3/4" #81911 1  
**71501** Painted, Weld-On, Flip-Latch Style, 10,000 lbs. Capacity Class IV; A=10-7/8"; B=10-3/8"; C=13" #88007 1

### ATWOOD A-FRAME COUPLERS

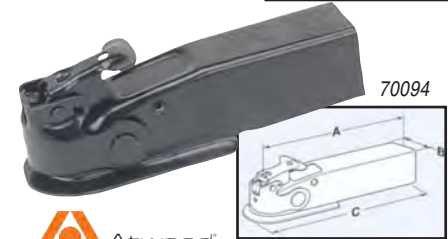
Atwood A-frame couplers weld onto frame members set at 50° angles and are manufactured for SAE class III and IV. These couplers are designed for demanding applications, and feature a jack mounting hole for easy installation. **70085** features a patented high-strength wrap-around yoke with a sliding clamp for secure coupling. **70087** has a unique thumb latch and ball clamp which are engineered to provide quick and easy operation. **79339** and **71501** are the tough, durable classic Marvel flip-latch style.

### ATWOOD COUPLER REPAIR KITS

Lock & shoe assembly, coupler spring, handle, roll pin.



**Coupler Repair Kit:**  
**77059** 2" Kit #88050 1  
**77060** 2-5/16" Kit #88060 1



### ATWOOD STRAIGHT TONGUE COUPLERS

USA-manufactured with high-quality, secure latching. Die formed from heavy-gauge steel for added durability and strength, Atwood straight-tongue couplers are designed for a variety of applications which include bolt-on for 3" channel, weld-on for 2" and 3" channels and weld between use. Painted.

**Straight Tongue Coupler for 2" Ball:**  
**70092** Bolt-On, 3" Channel, 3500 lb. SAE/CSA, Class II; A=9-3/8", B=3", C=11", D=7/8", E=3/4", F=3" #80051 1  
**70094** 2" Channel, 5000 lb. SAE/CSA, Class III; A=9-1/2", B=2", C=11" #80082 1  
**Straight Tongue Coupler for 2-5/16" Ball:**  
**70495** 3" Channel, 8500 lb. SAE/CSA, Class IV; A=12", B=3-1/8", C=14" #80131 1

# COUPLERS AND ACCESSORIES

**TOWING  
& SAFETY**

**N**

In Section N:	Hitches	Hitch Accessories	Car Towing	Levels	Mirrors & Safety	Brake Controls	Towing Electrical	Brake & Wheel	Automotive
---------------	---------	-------------------	------------	--------	------------------	----------------	-------------------	---------------	------------



## DURASAFE COUPLER CONNECT™

**Trailer Hook-Ups Made Easy  
(includes mounting bracket  
and guide plate).**

This innovative accessory will take away the problems associated with trying to hook up a trailer. No more dinged bumpers, repeated attempts or potential arguments with your helper. It locates the trailer coupling directly over the ball without the need of assistance. The Coupler Connect installs in minutes, and can be used as a wheel chock when you're not hooking up. • Aligns coupler directly over tow ball • Two-piece construction: mounting bracket and guide plate • Prevents damage to vehicle

• Fitted in minutes • Saves time on every backup • Does not require a line of sight out back window • Bracket fits standard 1" dia. ball shank • Made in the U.S.A. Made of zinc-plated steel for durability.

**31682** Coupler Connect™ #CC001 [6](#)



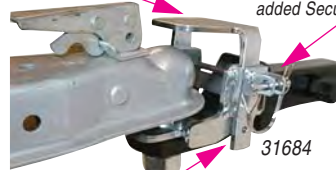
31682



Top view

Guard Prevents Decoupling  
of Trailer From Towing Vehicle

Replace the Pin  
with a padlock for  
added Security



31684

Universal Fit with Incremental  
Adjustments for Proper Height

## COUPLER CONNECT™ Plus PROTECT

**Helps You Connect and Then Protect  
(includes mounting bracket, guide plate  
and hold down device).** Coupler Connect™ plus Protect offers the same advantages as the Coupler Connect but also includes a separate hold down device that prevents the coupler from accidentally popping off the tow ball during travel. One mounting bracket, two complimentary accessories.

**31684** Coupler Connect™ Plus Protect  
#CCP200 [6](#)

### Optional Items

The CC125 (Witch) is an extra modified bracket for heavy duty receivers with a 1.25" ball shank.

**31685** Extra Base Plate #CC125 [6](#)

The CC900 is sold as an extra bracket for customers that have more than one vehicle or receiver.

**31683** Extra Bracket Only #CC900 [6](#)

## HUSKY PIN COUPLER LOCK

Security for your trailer, both on and off the hitch. Weather-resistant. 5-pin, pick-resistant tumbler lock. Solid die cast and brass plated with stainless steel holding pin, springs and tumblers. No holes to drill. Key will remove at every quarter turn. Will work on A-Frame couplers. With 2 keys.

**38958** Coupler Lock, CD/1  
#38958 [24](#)



## HUSKY UNIVERSAL MAXIMUM SECURITY COUPLER LOCK

A truly universal coupler lock—securely locks onto all tongue type couplers 1-7/8" – 2-5/16". Corrosion-resistant solid die-cast housing. High security pick-resistant lock cylinder with a 5/8" hardened steel shackle for maximum security.

**39594** Maximum Security Coupler  
Lock #DT-26013 [20](#)

## ARMORLOCK

Exclusive revolving case-hardened steel shackle guard, 3/4" armored bottle-cutter barrier and dual steel levers lock each shackle-leg separately. Combined in a powerful 1 1/2" laminated steel case with 4-pin tumbler. Rust-resistant, easy to use.

**745448** Armorlock, CD/1 #37D [24](#)

## Master Lock

### SOLID BRASS COUPLER LOCK

Case-hardened steel shackle. • Lock design protects shackle from cutting and sawing. • Precision pin tumbler mechanism resists picking. • Shackle pin size: 1/4"; fits opening: 1/2".

**39311** 2" Solid Brass Trailer Hitch Coupler  
Lock #605DAT [24](#)

### ADJUSTABLE COUPLER LOCK

#38982 has a nickel-plated, zinc die-cast body with a front access key-way for ease of accessibility. One of the unique features of this product is the ratcheting shaft which allows it to fit most 1 7/8" and 2" couplers. Full color package.

**38982** Fits most 1-7/8" and 2" Couplers  
#377DAT [4](#)

**39418** Fits most 2-5/16" couplers: Titan, Atwood, Reese, Shelby, Valley, Acme, Dico, Ideal, Marvel and Dutton-Lainson  
#378DAT [4](#)



In Section N:

Hitches

Hitch Accessories

Car Towing

Levels

Mirrors &amp; Safety

Brake Controls

Towing Electrical

Brake &amp; Wheel

Automotive



### MASTER COUPLER LOCKS

Exclusive locking device. Easy to use, installs in less than a minute. Powerful protective housing covers trailer coupler, guards against towing theft. Famous Master pin tumbler locking security. Rust-resistant, baked epoxy acrylic finish. With locking wrench and 2 keys.

**741102** For Most 2" Couplers: Acme, Atwood, Dico, Fulton, General, Ideal, Lainson, Sears, Tow-Rite, and Others #34AT 6

**30033** For 2" Hadco, 2<sup>5</sup>/<sub>16</sub>" and 2" Atwood (old style) Couplers with Wide Flanges #36AT 6

### Master Lock UNIVERSAL TRAILER COUPLER LOCK

- Fits 1-7/8", 2", and 2-5/16" couplers manufactured by Reese®, Fulton, Valley, Atwood®, Shelby, Putnam, Hammerblow, Dutton Lainson, and UFP.
- Advanced locking mechanism resists picking and prying.



Running change from silver to black!

**30343** Universal Trailer Coupler Lock #379DAT 2

### Master Lock



### RECEIVER/COUPLER STAINLESS ADJUSTABLE SET

**Receiver lock:** • Stainless steel. • Fits both 5/8" & 1/2" applications. • One number replaces two; minimizes returns. • Master Lock brand strength.  
**Coupler latch lock:** • Armored hardened steel shackle defies cutting. • 1-9/16" laminated steel body for superior strength. • 4-pin tumbler cylinder helps prevent picking. • Shackle guard protects against bolt cutters and hacksaws. • Ideal for securing trailers, cables and chains. Keyed alike lockset.

**30340** Receiver/Coupler Adjustable Set #1481DATSC 6

### DeadBolt: LOCK IT OR LOSE IT!

All **DeadBolt** locks utilize hi-tech materials and state-of-the-art engineering to bring you the ultimate in performance, value, and style. Weatherproof lock cylinder for trouble free use. Strong, reversible automotive style key is easy to insert and remove... even with gloves on! Fits comfortably on your key ring. Double chrome plate provides automotive grade durability and corrosion resistance. Strong, tough one piece machined carbon steel pin. Non-skid pin knob provides comfortable grip even in cold, wet weather. Patented screw-and-lock security. Rugged, pick-proof threaded connection that won't false lock. Two keys. Covered under US Patents 4,711,106 and 5,284,038.



### RECEIVER HITCH LOCKS

Protect your hitch & trailer against theft and accidents.

*Receiver Hitch Lock (Style A):*

**38954** 1/2" Dia. Pin for 1-1/4" x 1-1/4" Receiver (Class II) #RH2 12

**38955** 5/8" Dia. Pin for 2" x 2" Receiver (Class III & IV) #RH3 24

**32065** 5/8" Dia. Pin for 2-1/2" x 2-1/2" Receiver (Class V) #RH5-XL 12

*Receiver Hitch Lock (Style B):*

**39540** Solid Stainless Steel Receiver Hitch Lock, 5/8" Dia. Pin for 2" x 2" Receiver (Class III & IV) #RH3-SS 24

### HITCH & TRAILER LOCK SET (KEYED ALIKE)

One hitch lock and one coupler lock KEYED ALIKE for your convenience. Now you can lock your hitch and trailer with ONE key.

*Hitch & Coupler Lock Set for 2" x 2" Receiver Hitch (Class III and IV) and Lever-Style Coupler with the following opening:*

**38956** For 1/2" Opening #RHC32 12

**38957** For 2" Opening #RHC33 1

*Hitch & Coupler Lock Set for 2" x 2" Receiver Hitch (Class III and IV) and Surge Brake Style Coupler with the following opening:*

**39541** For 2-1/2" Opening #RHC34 12

**30169** <sup>LS</sup> For 3-3/8" Opening #RHC35 1

### DEADBOLT CRS KIT

Keyed -alike locks? No problem! Now it's as easy as 1, 2, 3. 1) Insert service key 2) Remove the core 3) Insert new keyed-alike core. With the exclusive Core Removal System (CRS), any DeadBolt lock can be re-keyed on-the-spot using the CRS Kit.



**S/D** 50 Keyed-Alike Cores and 2 Service Keys #CRS



### CONVENTIONAL TRAILER LOCKS

Available for lever style couplers requiring a 1/4" pin and a 1/2", 2" or 7/8" opening:

**38951** Lock for 1/2" Opening #RC2 1

**38952** Lock for 2" Opening #RC3 4

**39288** Lock for 7/8" Opening #RC6 6

### SURGE BRAKE TRAILER LOCKS

Only lock for surge brake style couplers. Available for surge brake couplers requiring a 1/4" pin and a 2-1/2" opening or 3-3/8" opening:

**38953** For 2<sup>1</sup>/<sub>2</sub>" Opening #RC4 24

**39140** For 3<sup>3</sup>/<sub>8</sub>" Opening #RC5 12



### CABLE LOCK

Protect your valuables against theft with this solid machined steel, chrome plated DeadBolt Cable Lock. Tough 5/16" x 10' vinyl coated aircraft type cable with integral locking mechanism. Two keys.



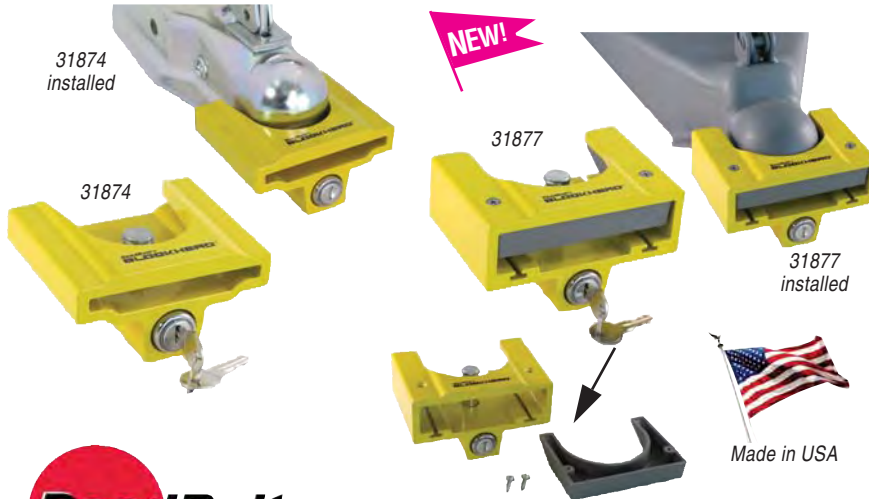
**39542** Cable Lock 5/16" x 10' #CAB 1

# COUPLER ACCESSORIES • LOCKS & PINS

**TOWING  
& SAFETY**

**N**

In Section N:	Hitches	Hitch Accessories	Car Towing	Levels	Mirrors & Safety	Brake Controls	Towing Electrical	Brake & Wheel	Automotive
---------------	---------	-------------------	------------	--------	------------------	----------------	-------------------	---------------	------------



## DEADBOLT BLOCKHEAD TRAILER COUPLER LOCKS

**FOR 1-7/8" & 2" COUPLERS**

Maximum security for unattended trailers. Hi-tech materials redefine the traditional lip engaging coupler lock. Extruded, tempered aluminum body provides superior strength to weight ratio, a distinctive look, and great value. Simple, rugged push button lock mechanism. Double-sided automotive style key makes for easy insertion and removal. Shuttered key opening prevents clogging and freezing. Durable powdercoat finish. Fits all flat lip 1-7/8" and 2" couplers.

- Fits all 1-7/8" and 2" lip-engaging, trigger style couplers.
- Coupler should have rolled lip around the bottom. Maximum lip width: 3-3/4".
- 5-pin tumbler; 2 keys.
- Material: Extruded tempered aluminum body.
- Finish: Powdercoat.
- Made in USA..

**31874** Trailer Coupler Lock  
#TCL1-YL 12

## FOR 2" & 2-5/16" COUPLERS, BOTH FLAT AND ROLLED LIP

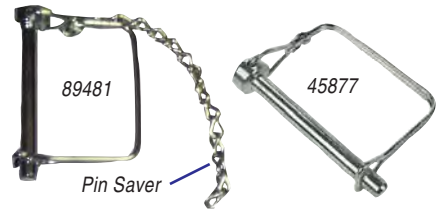
STRONG. TOUGH. SIMPLE. Hi-tech materials redefine the traditional lip engaging coupler lock. Extruded, tempered aluminum body provides superior strength to weight ratio, a distinctive look, and great value. Simple, rugged push-button lock mechanism. Removable adaptor allows a snug fit on flat and rolled lip 2" and 2-5/16" couplers. Durable, exterior grade powder coat finish. Double-sided automotive style key makes for easy insertion and removal. Shuttered key opening prevents clogging and freezing. Uses standard DeadBolt key codes. Fits 2" and 2-5/16" lip-engaging, trigger style couplers. Fits BOTH flat and rolled lip style. Coupler should have flat or rolled lip around the bottom. Maximum lip width: 4-1/2".

- Fits all 2" and 2-5/16" lip-engaging, trigger style couplers.
- Fits BOTH flat and rolled lip couplers.
- Removable adaptor. Adaptor used for snug, non-rattle fit on flat lip couplers.
- Coupler should have a flat or rolled lip around the bottom. Maximum lip width: 4-1/2".
- 5-pin tumbler; 2 keys.
- Material: Extruded tempered aluminum body.
- Finish: Powdercoat.
- Made in USA.

**31877** BLOCKHEAD Trailer Coupler Lock  
#TCL2-YL 12



## JR PRODUCTS COUPLER LOCK PINS



## COUPLER LOCK PINS WITH PIN SAVER

Now you can eliminate the hassle of misplaced coupler lock pins. A security chain fastens to your coupler, so your pin is always there, when you need it. For use in towing with couplers that have a hole in latch for locking.

*Coupler Lock Pin with Pin Saver, Pk1:*

**89482** Small, 1/4" Dia., 1-3/8" Usable Length #01174 36

**89481** Large, 5/16" Dia., 2-1/2" Usable Length #01184 36

## COUPLER LOCK PIN WITHOUT PIN SAVER

Ideal for quick, secure locking of most trailer couplers. The snap lock bale is spring tensioned for a strong holding action. Pin is zinc plated and made of high strength steel that is rust and corrosion resistant for a long life.

*Coupler Lock Pin without Pin Saver:*

**87092** Small, 1/4" Dia., 1-3/8" Usable Length #01094 36

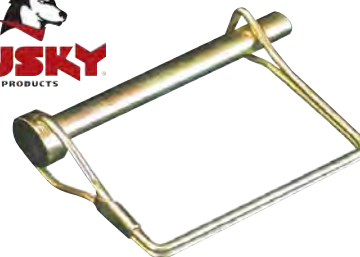
**45877** Large, 5/16" Dia., 2-1/2" Usable Length #01054 1

## MASTER LOCK STAINLESS STEEL ADJUSTABLE COUPLER LATCH LOCK



Armored hardened steel shackle defies cutting. • 1-9/16" laminated steel body for superior strength. • 4-pin tumbler cylinder helps prevent picking. • Shackle guard protects against bolt cutters and hacksaws. • Ideal for securing trailers, cables and chains.

**39720** Adjustable Coupler Latch Lock, Stainless Steel #2847DATSC 6



## HUSKY SAFETY LOCK PIN

Precision formed, high strength steel. Oil tempered spring stays securely snap-locked. Heavy zinc plated to prevent rust. 5/16" dia. pin, 2 5/8" W. Sold each.

**80235** Safety Lock Pin #80235 1

## Master Lock



## MASTER LOCK PIVOT LOCK TRAILER COUPLER LATCH PIN

- Chrome plated finish resists corrosion.
- Use ring to attach cable to coupler.
- Slide coupler latch pin through coupler hole.
- Pivot until perpendicular with coupler latch and slide into locked position.
- 6" (15 cm) cable length.
- 9/32" (7 mm) pin diameter.

**30346** Trailer Coupler Pivot Latch Pin #1491DATSC 12



**HUSKY LOCKING RECEIVER PIN**

Chrome-plated pin with a V-5 rating. Economical and secure protection against ball mount theft. Easy to use.



Locking Receiver Pin:

**34819** 1/2" Dia. x 2-1/8" L for Class I & II #34819 36

**31441** 1/2" Dia. x 3-1/8" L for Class I & II (will fit a 1-1/4" receiver or as a rail pin on all Husky Fifth Wheel Hitches up to 26K) #31441 1008

**34818** 5/8" Dia. x 3" L for Class III/IV (will fit a 2-1/2" receiver) #34818 36



**JR PRODUCTS PERMANENT HITCH PINS**

Replacement hitch pins designed for quick and easy use. The chromatic plated steel pin is rust and corrosion resistant for a long lasting life. Our original design swivel security clip is spring loaded for a firm fit. Easy to use, simply insert the pin in the hitch, turn the swivel clip and push until you hear or feel the spring set in place. No more lost or stolen pin clips to worry about.

Permanent Hitch Pin, Packaged:

**31055** 5/8" Hitch Pin, 3" usable length #01034 36

**47171** 1/2" Hitch Pin, 2-3/8" usable length #01084 24

**JR PRODUCTS SAFETY LOCK PINS**

Safety Lock Pins are designed for a secure trouble-free installation. The snap lock bale is spring tensioned for a strong holding action. Pin is zinc plated and made of high strength steel that is rust and corrosion-resistant for a long life. Use anywhere a strong, secure safety pin is needed. Packaged.



Order #	Mfr. #	Dia. Width	Usable Length	Loop Clearance	Pin Length
47172	#01224	1/4"	1-3/4"	1-1/2"	2-1/16"
40884	#01294	1/4"	2"	1-11/16"	2-1/2"
47176	#01274	1/4"	2-1/2"	1-3/4"	2-7/8"
47177	#01284	1/4"	3"	1-17/32"	3-3/16"
45878	#01214	1/4"	3-1/2"	1-9/16"	3-23/32"
47173	#01244	5/16"	2-9/16"	1-23/32"	2-25/32"
47174	#01254	3/8"	1-1/2"	1-1/2"	1-21/32"
47175	#01264	3/8"	2-1/4"	1-17/32"	2-17/32"



30330

30333



**HUSKY DEADBOLT HITCH LOCK**

The chrome-plated Husky hitch locks add safety and security to your towing system. Husky hitch locks are built to last and will protect your investment for years. Our product features chrome-plated pins rated up to 14,000 lbs., textured rubber covers for a comfortable grip, dust caps to protect the lock from water and debris, and two reversible flat keys for your convenience. The deluxe model includes a sliding keyhole cover for extra assurance and additional styling for comfortable opening and closing.

Class I & II (up to 3,500 lbs.), 1-3/4" Receiver

**30330** Hitch Lock, 1/2", Deluxe #KN-200-2C 1

**30332** Hitch Lock, 1/2", Round #KN-03-5C 1

Class III & IV (3,501-14,000lbs.), 2" Receiver

**30331** Hitch Lock, 5/8" w/ Coupler Lock #HPL-AF01-1 1

**30333** Hitch Lock, 5/8", Round #KN-03-6C 1



33790

34521

**HUSKY HITCH PULL PIN AND CLIP**

CLASS II: 1/2" PULL PIN AND SPRING CLIP ON A CARD.

**34521** 1/2" Pull Pin & Clip #PZ-200/4574-06 1

**33792** Spring Clip only, Bulk #4574-06 1

**33253** Hitch Pin only, 1/2" x 2", Bulk #PZ-200 10

CLASS III: 5/8" DIA. X 3" LONG HITCH PIN WITH HITCH PIN CLIP.

**33790** Pin & Clip #4575-00/4574-06 1

**33791** Pull Pin Only, Also Replaces Reese #55010 and Eaz-Lift #4012, Bulk #4575-00/01040 50

**33792** Spring Clip Only, Also Replaces Reese #55020 and Eaz-Lift #4017, Bulk #4574-06 1



**HUSKY SPRING CLIP**

• Size: 3-1/4" L x 1-1/2" W; 1-1/4" hole dia.

**34853** Spring Clip, 2/Pk #34853 50

**Master Lock**



**MULTI-FIT RECEIVER LOCK COMBO**

Stainless steel. • Fits both 5/8" & 1/2" applications. • One number replaces two; minimizes returns. • Master Lock brand strength.

**39317** Lock Combo #1480DAT 1

# HITCH ACCESSORIES

**TOWING  
& SAFETY**

N

In Section N:	Hitches	Hitch Accessories	Car Towing	Levels	Mirrors & Safety	Brake Controls	Towing Electrical	Brake & Wheel	Automotive
---------------	---------	-------------------	------------	--------	------------------	----------------	-------------------	---------------	------------



## JR PRODUCTS PINS & CLIPS HITCH PIN

Replacement towing hitch pin made of chromatic plated steel. Rust and corrosion resistant. For any Class I, II or III style hitches. Angled for easy grip when installing or removing pin from hitch.

- 41257** 5/8" Hitch Pin, 2-7/8" usable length #01024 36
- 41258** 1/2" Hitch Pin, 2-3/8" usable length #01124 36

### HITCH PIN CLIP

- 41259** Replacement Clip for 5/8" Pull Pin #01014 1
- 41271** Replacement Clip for 1/2" Pull Pin #01134 36

### HITCH PIN/HITCH PIN CLIP COMBO

Pins made of spring steel. Bright zinc-plated for protection against rust.

*Hitch Pin/Pin Clip Combo:*

- 41269** 5/8" #01074 36
- 41270** 1/2" #01144 24

### SWAY CONTROL REPLACEMENT CLIP

Spring clips made of spring steel w/zinc-plating for protection against rust. 5/32" x 2-7/8".

*Replacement Sway Control Spring Clip:*

- 41272** Pk/2 #01004 1
- 30172** Bulk #01001 1

### S-HOOK

"S" Hook for trailer safety chain.

- 41275** 3/8" "S" Hook #01154 32

### WEIGHT DISTRIBUTION REPLACEMENT PIN

Replacement pin for weight distribution hitches. Formed 3/16" bright zinc-plated. 2 per card.

*3/16" Replacement Pin:*

- 41273** Pack of 2 #01044 24
- 31119** Bulk #01041 1

## TIE DOWN ENGINEERING SAFETY CABLES

### CLASS III, SELF-COILING

Replace your noisy chains with self-coiling hitch cables. Durable black vinyl-coated galvanized aircraft cables exceed SAE J684 standards for trailer coupling and automotive type hitches. 36" L with 7/16" S-hooks. NMMA Certified.



*Hitch Cable, Pair:*

- 764183** Class II, 3500 lb. #59537 1
- 76591** Class III, 5000 lb. #59541 6

## SAFETY CHAINS

### WITH QUICK LINKS



9/32" safety chain w/(2) quick link connectors, zinc coated, 5,000 lb breaking strength, comes packaged in retail clamshell.

*Safety Chain with Quick Links:*

- 57477** 4ft, Cls II/III #11215 5
- 57478** 6ft, Cls II/III #11220 5



## "S" HOOK CHAIN KEEPER

These patented safety chain keepers attach easily to the "S" hook to keep your chains secured to the vehicle. Required in some states. 2/package.

- 2-7/8" L x 7/8" W. Holes are 1-1/2" apart.
- 56921** "S" Hook Chain Keeper #81255 12

## EYE HOIST HOOK

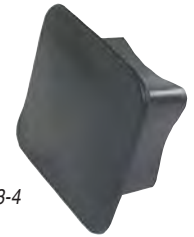
- Drop forged steel.
- Zinc Plated.
- Inside length is 2-1/2".
- Load limit: 4,000 lbs.



- 31908** Forged Eye Hoist Hook with Latch #EH02CL 1



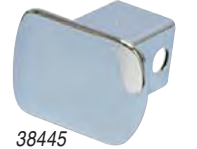
## HUSKY RECEIVER CAPS



38443-4



38440



38445



38446



38441



38442

Durable plastic receiver cap protects and conceals receiver opening when not in use. Black.

*Husky Black Press-In Receiver Cap:*

- 38443** 2" #38443 210
- 38444** 1-1/4" #38444 30

*Husky 2" Pinned Receiver Cap:*

- 38440** Black, CD/1 #38440 10
- 38445** Chromed, Bulk #38445 10
- 38446** Black, Bulk #38446 5

*Husky 2" Decorator Engraved Pinned Receiver Cap, Chromed, CD1:*

- 38441** Travel Trailer #38441 5
- 38442** Boat #38442 1

## PRIME PRODUCTS QUICK LINKS



*CARDED Quick Links*

- 41465** 1/4" Link; #18-0110PK 24
- 41466** 5/16" Link; #18-0120PK 48
- 41467** 3/8" Link; #18-0130PK 24

*BULK Quick Links*

- 30260** 1/4" Link; #18-0110 25
- 30029** 5/16" Link; #18-0120 1
- 30699** 3/8" Link; #18-0130 25



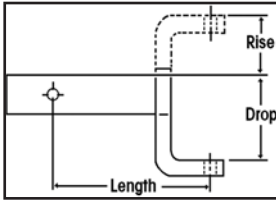
**HUSKY Ball Mounts**

The best way to even out a load is to select the best fitting ball mount. Ball mounts vary by weight rating, shaft length, and rise/drop measurements. Husky's Class I & II Ball Mounts are manufactured with a precise rise or drop to suit each of the applications. Rise/drop measurements become important in Class III and IV, and Husky offers you a wide range of rise/drop choices.

**LIFETIME LIMITED WARRANTY**

**SELECTING A BALL MOUNT WITH THE CORRECT RISE OR DROP**

Follow the simple steps illustrated below to determine the ball mount with enough rise or drop to keep the trailer in a level position.

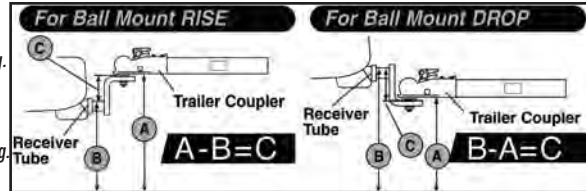


**FOR BALL MOUNT RISE:**

**A** = Distance from ground to bottom of trailer coupler.  
**B** = Distance from ground to top I.D. of the receiver tube opening.  
**C** = Amount of rise necessary to keep trailer level.

**FOR BALL MOUNT DROP:**

**A** = Distance from ground to bottom of trailer coupler.  
**B** = Distance from ground to top I.D. of the receiver tube opening.  
**C** = Amount of drop necessary to keep trailer level.



**Class III/IV Ball Mounts**

Black powder-coat finish, 1" ball hole.



31357

Fits standard 2" square receiver opening

**CLASS III/IV BALL MOUNTS: BLACK POWDER-COAT FINISH**

Length	Rise	Drop	Weight Rating†	Bulk Item #
8"	3/4"	2"	6,000 lbs.	31357
6-3/4"	2"	3-1/4"	6,000 lbs.	31359
9"	1"	2-1/4"	6,000 lbs.	31360
10"	3"	4-1/4"	5,000 lbs.	31358
9"	••	8"	3,500 lbs.	31361
10-1/2"	1"	2-1/4"	6,000 lbs.	31362
11-1/2"	4-3/4"	6"	5,000 lbs.	31363
12"	1"	2-1/4"	6,000 lbs.	31369

**Straight Economy Ball Mount**

8"	3/4"	2"	6,000 lbs.	31364
----	------	----	------------	-------

•• Not to be used in rise position. 3,500 lbs. Capacity, 3/4" ball shank hole.



31361



31358



31364

**Class II Replacement Ball Mounts**

Black powder-coat finish, 3/4" ball hole.

†Note: weight rating is limited to Vehicle Tow Rating; see Vehicle owners Manual.

**CLASS II REPLACEMENT BALL MOUNTS, BLACK POWDER-COAT FINISH**

Length	Rise	Drop	Weight Rating†	Bulk Item #
6-5/8"	5/8"	n/a	3,500 lbs.	31341
7-7/8"	2-1/4"	n/a	3,500 lbs.	31342

Fits standard 1-1/4" square receiver opening



# BALL MOUNTS

In Section N:	Hitches	Hitch Accessories	Car Towing	Levels	Mirrors & Safety	Brake Controls	Towing Electrical	Brake & Wheel	Automotive
---------------	---------	-------------------	------------	--------	------------------	----------------	-------------------	---------------	------------



## HUSKY TRI-BALL ADJUSTABLE BALL MOUNT

- Adjustable Triple Ball Mount. • Chrome ball, zinc plated hardware, black powder coat finish. • Head adjusts up and down on a reversible shank.
- Anti-rattle adjustment bolt on the head. • Easy pull pin adjustment. • 1-7/8" Ball: 2000 lbs. Capacity. • 2" Ball: 6000 lbs. Capacity. • 2-5/16" Ball: 10,000 lbs. Capacity. • All hardware included

TRI-BALL ADJUSTABLE BALL MOUNT		
Description	Item #	
Tri-Ball Adjustable Ball Mount	30001	

## Class III/IV Multiple Tow And Adjustable Ball Mounts

1" ball hole. NOTE: The ball being used must match the coupler size on the trailer being towed. Triple and double ball mounts are used when towing a variety of sizes and weights of trailers. Weight rating is limited to Vehicle Tow Rating; see Vehicle owners Manual.

Fits standard 2" square receiver opening



CLASS III/IV MULTIPLE TOW AND ADJUSTABLE BALL MOUNTS			
Description	Feature	Item #	
<ul style="list-style-type: none"> <li>• Double Tow Ball Mount</li> <li>• Black Powder-Coat Finish</li> <li>• 8" from pin hole to ball center.</li> </ul>	<ul style="list-style-type: none"> <li>• 2" trailer ball and</li> <li>• 2-5/16" trailer ball rating 500/5,000 lbs.</li> </ul>	31354	
<ul style="list-style-type: none"> <li>• Triple Tow Ball Mount</li> <li>• Black Powder-Coat Finish</li> <li>• 8" pin hole to 2-5/16" ball;</li> <li>• 7" pin hole to other balls.</li> <li>• 12" overall shank length.</li> </ul>	<ul style="list-style-type: none"> <li>• 1-7/8" trailer ball rating 200/2,000 lbs.</li> <li>• 2" trailer ball rating 500/5,000 lbs.</li> <li>• 2-5/16" trailer ball rating 1000/10,000 lbs.</li> </ul>	31349	



## Pre-Torqued Tow Kits

Class III black powder coated ball mount with 5/8" hitch pin and clip (stored inside the tube) plus a factory-torqued chrome trailer ball. †Weight rating is limited to Vehicle Tow Rating; see Vehicle owners Manual.

PRE-TORQUED TOW KITS (SOLD EACH)		
Description	Item #	
6-3/4" Length; 3/4" Rise; 2" Drop; 2" x 1" ball, pin & clip, pre-torqued, 6,000 lb.† rating with 6,000 lb. trailer ball	31366	
6-3/4" Length; 2" Rise; 3-1/4" Drop; 2" x 1" ball, pin & clip, pre-torqued, 6,000 lb.† rating with 6,000 lb. trailer ball	31367	

Fits standard 2" square receiver opening





**A. TOWING BALL MOUNTS (2" SHANK)**

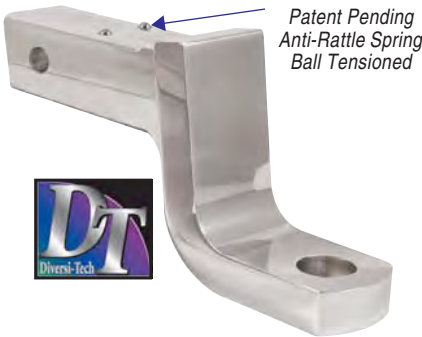
- Straight, high-low, & deep drop tube style mounts
- Fits 2" receiver tubes
- 2 piece welded steel or forged aluminum construction
- Black powder coat finish
- Tongue accepts 1" diameter shank towing balls.



**B. TOWING BALL MOUNTS (2-1/2" SHANK)**

- Fits 2-1/2" receiver tubes
- 2 piece welded steel construction
- Black powder coat finish
- Tongue accepts 1-1/4" diameter shank towing balls.

Order #	Mfr. #	Description	Length	Max Drop	M.V.L.	M.G.T.W.
31902	#1803005	Straight Ball Mount, 2" Shank	8"	2"	600 lbs	6,000 lbs
31903	#1803405	Straight Ball Mount, 2-1/2" Shank	10"	3"	1,200 lbs	12,000 lbs
31905	#1803410	High-Low Ball Mount, 2-1/2" Shank	10"	5"	1,200 lbs	12,000 lbs



**DIVERSI-TECH NON LOCKING ANTI-RATTLE BALL MOUNT**

- Precision Machined. • Super Strength Alloy.
  - Maximum Security. • Solid Anti-Rattle Fit.
- DT-BM Series. Hitch-pin style polished aluminum ball mounts. Class V: 2,000 lb. Tongue/ 14,000 lb. Trailer Weight.

2" Drop, 1" Rise, Non-Locking Ball Mount:

**30404** 1-1/4" Ball Hole Size  
#DT-BM5200 1



**2-1/2" TO 2" RECEIVER TUBE ADAPTER**

- Reducer sleeve slides inside 2-1/2" receiver.
- Accepts all 2" hitch accessories. • Zinc plated steel. • Rounded corners. • 5/8" Hitch pin hole.

**31901** 2-1/2" to 2" Receiver Tube Adapter  
#RTA252 1

**DIVERSI-TECH PRECISION SELF LOCKING BALL MOUNT**



- **Precision Machined:** DT ALBM's™ are precision machined and polished from only the highest quality aluminum and stainless steel materials available.
- **High Strength:** O-Ring sealed overlapping stainless steel slide pins have been shear tested to 20,000 lbs. and offer reliable corrosion-resistant super high-strength operation.
- **Maximum Security:** Dual locking maximum security pick resistant lock cylinder with dust cover. Polished aluminum Class V: 1,500 lb. Tongue/10,000 lb. Trailer Weight.

DT Adjustable Dual Locking, Double Ball Mount:

**30398** 4" Drop, 5" Rise, 2" and 2-5/16" Ball  
#DT-ALBM6400 1

**30399** 6" Drop, 7" Rise, 2" and 2-5/16" Ball  
#DT-ALBM6600 1

**30400** 8" Drop, 9" Rise, 2" and 2-5/16" Ball  
#DT-ALBM6800 1

**30654** 10" Drop, 11" Rise, 2" and 2-5/16" Ball  
#DT-ALBM7000 1



**STAR BRITE HITCH LUBE**

Don't take shortcuts when it comes to trailering safety, use the best protection available for trailer hitches. Star brite lubricant provides superior adhesion that will not wash off or break down. Protects from -65°F to +650°F. Non-staining, non-toxic.



**37434** Hitch Lube, 4-Oz. #085804 12

**MASTER LOCK INTERCHANGEABLE HITCH BALL WITH WRENCH FLATS**

- 1-7/8", 2" & 2-5/16" hitch balls and 1" shank.
- 8,000 lb shank rated, see individual ball for maximum load rating.



- Chrome plated solid steel components are able to withstand the elements. • Change hitch balls without disconnecting the hitch ball from the ball mount and change from ball diameter to another without the need for any special tools. • The shaft includes a 13/16" wide flat area for a wrench to aid installation and prevent damage to the hitch ball finish. • Best Used For: Automotive & Towing, Trailers, Vans & Moving Trucks and Marine Recreation.

**39719** 1" Shank, with 1-7/8" (2,000 lbs), 2" & 2-5/16" Hitch Balls (8,000 lbs)  
#2867DAT g

# HITCH BALLS & ACCESSORIES

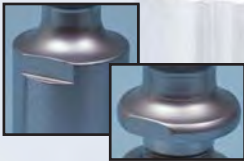
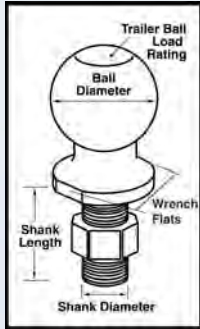
TOWING  
& SAFETY

N

In Section N:	Hitches	Hitch Accessories	Car Towing	Levels	Mirrors & Safety	Brake Controls	Towing Electrical	Brake & Wheel	Automotive
---------------	---------	-------------------	------------	--------	------------------	----------------	-------------------	---------------	------------

## HUSKY Solid Steel Trailer Hitch Balls

Manufactured from a single piece of solid steel with various shank lengths to accommodate a variety of ball platform thicknesses. Rated from Class I to Class IV with varying gross towing loads up to 17,000 lbs. † Includes lockwasher and nut. Follow these easy steps to properly determine the correct trailer ball for your application: **A. Determine Ball & Coupler Size** — Most couplers are stamped with the required trailer ball size. The sizes you'll most likely find stamped in the coupler are: • Class I, 1-7/8"; • Class II, 2"; • Class III, 2-5/16". **B. Gross Trailer Weight (GTW)** — Select the appropriate trailer ball to match or exceed the Gross Trailer Weight rating of the trailer. **C. Match the Trailer Ball Shank to the Ball Platform Thickness & Hole Size** — When mounted in the ball platform, the threaded ball shank must protrude beyond the bottom of the lock washer and nut at least two threads. **D. Hole Size** — The trailer ball shank must be matched to the platform hole diameter size. Standard hole sizes are: • Class I: 3/4" diameter; • Class II: 3/4" diameter; • Class III/IV: 1" diameter; • Weight Distribution: 1-1/4" diameter.



All Husky trailer balls come with "wrench flats" for ease of installation.

SOLID STEEL TRAILER HITCH BALLS WITH CHROME FINISH								
Ball Diameter	Shank Diameter	Shank Length	Gross Loads†	Ball Platform Thickness	Packaged Item #		Bulk Item #	
1-7/8"	3/4"	1-3/4"	2,000 lbs.	3/8" - 3/4"	34915		33844	
*1-7/8"	3/4"	2-5/16"	2,000 lbs.	1/2" - 1-3/8"	34921		33845	
1-7/8"	1"	2-1/8"	2,000 lbs.	3/8" - 3/4"	34916		33846	
1-7/8"	1"	2-7/8"	2,000 lbs.	3/4" - 1-7/8"	34922		33847	
2"	3/4"	1-3/4"	3,500 lbs.	3/8" - 3/4"	34917		33849	
*2"	3/4"	2-5/16"	3,500 lbs.	1/2" - 1-3/8"	34923		33850	
2"	1"	2-1/8"	6,000 lbs.	3/8" - 3/4"	34918		33851	
2"	1"	2-7/8"	6,000 lbs.	3/4" - 1-7/8"	34924		33852	
2-5/16"	1"	2-1/8"	6,000 lbs.	3/8" - 3/4"	34919		33855	
2"	1-1/4"	2-5/8"	8,000 lbs.	1/2" - 3/4"	---	---	33853	
2-5/16"	1-1/4"	2-5/8"	12,000 lbs.	3/8" - 3/4"	30255		39386	
2-5/16"	1-1/4"	2-5/8"	14,000 lbs.	3/8" - 3/4"	---	---	30678	
2-5/16"	1-3/8"	2-1/2"	17,000 lbs.	3/8" - 7/8"	---	---	39907	

\*Required for certain step bumper equipped pickups w/ball platforms thicker than 3/4". Always use a lockwasher & tighten nut with a torque wrench to proper torque. †Limited to Vehicle Tow Rating; see Vehicle Owners Manual.

## HUSKY Trailer Hitch Balls - Lift

Solid steel, chrome finished. First measurement is ball size, second is shank diameter, and third is the lift height.

Denotes Limited Supply

Ball Dia.	Shank Dia	Lift Height	Max. Capacity†	Part #
2"	1"	1"	5,000 lbs.	30601
2-5/16"	1-1/4"	1"	7,000 lbs.	30604
2-5/16"	1-1/4"	2"	5,000 lbs.	30605

†Limited to Vehicle Tow Rating; see Vehicle owners Manual.



## HUSKY Hitch Ball Covers

Protects hitch balls from rust and dirt, and protects you from grease! Remove and install covers in seconds.

Small Ball Cover (fits 1-7/8" and 2" balls)	Part #
Black	30100
Red	31279



## HUSKY SWAY CONTROLS



### Complete Sway Control

#### SWAY CONTROL REPLACEMENT PARTS & ACCESSORIES

Slide Bar  
34846



Ball Mount Bar  
34845



Crank Handle  
34847



Tongue Ball Plate 34842

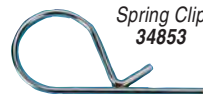


Clamp-on  
Ball Kit 38964

Sway  
Control  
Ball  
33842



Spring Clip  
34853



- Dual friction brake pad system provides constant and adjustable sway reduction.
- Diminishes sway from windy conditions and passing vehicles.
- Secures with socket and spring clip connectors.
- Detaches quickly for storage.
- Right-handed and Left-handed models.
- For trailers 24' and longer, the use of both R/H and L/H Sway Controls is recommended.

#### HUSKY SWAY CONTROL, PACKAGED

**34715** Sway Control, RH #190201

**37498** Sway Control, LH #37498  $\mathcal{g}$

#### SWAY CONTROL PARTS & ACCESSORIES

**34845** Weld-on Ball Mount Bar  
#34845  $\mathbf{1}$

**34846** Replacement Slide Bar  
#34846  $\mathbf{1}$

**34847** Replacement Crank Handle  
#34847  $\mathbf{1}$

**34842** Replacement Tongue Ball Plate  
#34842  $\mathbf{50}$

**34853** Replacement Spring Clip, 1/2", 2/Pk  
#34853  $\mathbf{50}$

**33842** Sway Control Ball, 1-1/4"  
#33842  $\mathbf{1}$

**71195** Replacement Screws, Pk/8  
#71195  $\mathbf{10}$

**38964** Clamp-On Sway Control Ball Kit  
(fits frames up to 6") #38964  $\mathcal{g}$

#### SWAY CONTROL BALL MOUNT ADAPTER

Quickly and easily add a sway control ball mounting pad to most standard ball mounts. Your hitch ball clamps the adapter firmly in place, while a bolt-on shim keeps it from twisting. Reversible for use with right-hand or left-hand sway controls. Made of powder coated steel.

**39585** Ball Mount Adapter, Box/1  
#39585  $\mathbf{12}$

In Section N:	Hitches	Hitch Accessories	Car Towing	Levels	Mirrors & Safety	Brake Controls	Towing Electrical	Brake & Wheel	Automotive
---------------	---------	-------------------	------------	--------	------------------	----------------	-------------------	---------------	------------

## VERSATILE AND REMOVABLE TOWING SOLUTIONS.



### Gooseneck System

- Adapts 5th wheel trailers to fit a gooseneck trailer hitch\*
- Rated up to 30,000 lbs.
- Available in 12, 15 and 17 inch heights
- Easy to install
- Tow a 5th wheel trailer without a large hitch taking up the bed of your truck

\*works in most cases



### EAZ-LIFT GOOSENECK ADAPTER

Eaz-Lift's Gooseneck adapter will convert most standard fifth-wheel trailers to a gooseneck trailer. This allows you to have the convenience of towing two types of trailers with only one truck. You will also enjoy towing a fifth-wheel trailer without having a large hitch taking up the bed of your truck. Eaz-Lift's Gooseneck adapter features an automatic latching coupler for a simple hookup and disconnect. It has a 30,000 lb tow rating and is available in 17, 15 and 12 inch heights for your specific truck and trailer setup. Easy to install and comes with all of the parts and hardware needed for installation.

- 30127** 12" Gooseneck Adapter #48500 1
- 39062** 15" Gooseneck Adapter #48501 1
- 31514** **NEW!** 17" Gooseneck Adapter #48490 1



### HUSKY FIFTH WHEEL LUBE DISC

The easy way to prevent friction without grease! Just slip the Fifth Wheel Lube Disc onto the pin; fits all types of fifth wheel trailers. A real convenience! PK/1.

Fifth Wheel Lube Disc:

- 33862** Standard, 8" Dia. #33862 100
- 34914** Heavy-Duty 10" Dia. #34914 50



In Section N:

Hitches

Hitch Accessories

Car Towing

Levels

Mirrors &amp; Safety

Brake Controls

Towing Electrical

Brake &amp; Wheel

Automotive



### HUSKY 5TH WHEEL KING PIN LOCK

Protect your fifth wheel with the Husky King Pin Lock. Just slide the U-bracket into the grooved portion of the king pin and insert the lock pin.

**38790** Fifth Wheel King Pin Lock  
#38790 12



Ultra-Fab Products, Inc.

### ULTRA-FAB PRODUCTS 5TH WHEEL SLEEVE WITH LOCK

• Locking feature adds extra security to 5th wheel at campsite or storage. • Kingpin lock deters 5th wheel trailer theft. • Fits over kingpin to prevent illegal hook-up. • Easy to install and use. • Made of heavy gauge steel. • Includes padlock. • 1-yr. Warranty.

**31792** 5th Wheel Sleeve with Lock  
#48-979008 1

### FIFTH WHEEL LOCK

This 3" dia. lock is a security collar for the king pin of a trailer. It prevents theft by obstructing locking-on of the fifth wheel.

**30900** Fifth Wheel Lock with 2 Keys  
#52502 6



### STROMBERG CARLSON LOUVERED TAILGATE

#### 4000 SERIES

This composite gate is assembled with rotary latches and coated cables. Gate lays flush with bed when down to allow cargo to be easily loaded. Further the single hand release can be used to lock your gate onto your truck to prevent theft. For those who want more privacy and a custom look additional accessory louvers can be added to your gate (sold separately). Paint the gate or just the accessory louvers to create your own style. This gate improves vision, removes drag in the bed of your truck when towing and protects your OEM gate from damage while you travel. This gate comes with a limited two year warranty.

#### For Dodge Pickups:

**60103** Fits 2002 1500 Series; 2003-2008 1500, 2500 & 3500 Series; 2009 1500 Series (Functional fit only); 2009 2500 & 3500 Series #VGD-02-4000 1

**60111** Fits 2010-2011 1500, 2500 & 3500 Series #VGD-10-4000 1

#### For Ford Pickups:

**60090** Fits 1997-2004 F-150 including Heritage Edition; 1999-2011 F-250 & F-350 Super Duty #VG-97-4000 1

**60091** Fits 2004-2011 F-150 with Standard 5' box #VG-04-4000 1



*Our composite gate is light weight, strong as steel and has louvers that will never rust*

- Glass filled composite resin
- Gate can be painted • Rotary latches
- Key locks gate onto truck
- Single handed release.



#### For GM Pickups:

**60092** Fits 1999-2006 Classic Body Style (Except composite box); 2007 2500 & 3500 Series Classic Body Style #VGM-99-4000

**60098** Fits 2007 1500 Series New Body Style; 2008-2011 All Series New Body Style #VGM-07-4000 1

#### For Toyota Pickups:

**60121** Fits 2007-2011 Full size Tundra trucks #VGT-70-4000 1



Smarter RVing means getting the most out of a mile, whether that be fun or gas mileage. Well designed Vented Tailgate provides fast hook-ups, good visibility and improves gas mileage. End panels contour to truck bed. Steel swing-down model; not a drop-in. Black.

#### 1000 SERIES

- Open design improves vision • Custom fitted

#### Fits Dodge Pickups

**60125** Fits 2010-2011 1500, 2500 & 3500 Series #VGD-10-100 1

#### Fits Ford Pickups

**71059** Fits 1997-2004 F-150 including Heritage Edition; 1997-1998 F-250 Light Duty; 1999-2011 F-250 & F-350 Super Duty #VG-97-100 1

#### Fits GM Pickups

**60123** Fits 2007-2008 1500, 2500, & 3500 New Body Style #VGM-07-100 1



### STROMBERG CARLSON HITCH HELPER 5TH WHEEL PIN BOX

Provides direct line of sight from rear view mirror to your hitch. Simply use your vehicles rear view mirror to find your hitch in the Hitch Helper mirror, line up the center of your hitch with the Center Finder and back into a perfect hookup every time! • Installs in Under 2 Minutes • Fits All Major Pin Boxes

**30886** Hitch Helper Fifth Wheel Pin Box  
#HH-100 1

