

THE MOST TRUSTED NAME IN TOWING!

Allure® Tow Bar



BX7460P, Allure®
vehicle mount tow bar shown with
available head options

The Class IV Allure® tow bar is specifically designed to fit heavy-duty vehicles, provide a tight turning radius and haul heavy loads with ease. With 10,000 lbs. of towing capacity, it features a pintle hook along with collapsible legs for safer and easier coupling and Signature Series easy-release locking handles. Safety cables incl.

- 32066** Allure® #BX7460P 1
32067 2" Ball Adapter #BX88248 1
32068 2" Receiver Adapter
 #BX88249 1
32069 2" Clevis Adapter #BX88250 1

Aventa® LX Tow Bar



BX7445, Aventa® LX
motorhome mount tow bar

The Class IV Aventa® LX tow bar has a ball-in-socket design that reduces wear points between the coach and the tow car. Hook up and disconnect is a cinch with the 360-degree swivel and easily connects and disconnects with Signature Series easy-release locking handles when you're out of alignment or on uneven surfaces. Our exclusive offset triple lug connection, minimizes the towing forces on the tow car. 10,000 lbs. safety cables are included.

- 30913** Aventa® LX 2" #BX7445 1
 S/O BX7450, Aventa® LX 2-1/2" receiver

Aladdin® Tow Bar



BX4325, Aladdin™
motorhome mount tow bar

The Class III 7,500 lb.s towing capacity Aladdin® tow bar is constructed primarily of aluminum. Weighing in at only 37 lbs, this ultra-light, self-aligning tow bar, with a 3-axis swivel design quickly connects and disconnects in minutes flat with the Signature Series easy-release locking handles! Its exclusive offset triple lug connection minimizes towing forces on the tow car. Safety cables come standard.

- 30909** Aladdin™ #BX4325 1

Alpha™ Tow Bar



BX7365, Alpha™
motorhome mount tow bar

The Alpha™ tow bar is for use with towed vehicles up to 6,500 lbs. This easy fold-away tow bar mounts and stores on the back of the RV when not in use. It is self-aligning, has quick disconnect hookup pins and Signature Series easy-release locking handles. It is constructed with solid steel. Safety cables are included.

- 31930** Alpha™ #BX7365 1

Acclaim™ Tow Bar



BX4330, Acclaim™
vehicle mount tow bar

The Class III Acclaim™ tow bar is virtually maintenance-free with Signature Series easy-release locking handles and protective rubber boots. It can tow vehicles up to 5,000 lbs. and is constructed with solid steel. This tow bar requires a 2" ball. Safety cables are included.

- 30910** Acclaim™ #BX4330 1

Ambassador® Tow Bar



BX7302, Ambassador™
A-frame tow bar

The Class III Ambassador® tow bar is made of solid steel and can safely tow up to 5,000 lbs. This tow bar requires a 2" ball. Safety cables are not included.

- 30911** Ambassador™ #BX7302 1

Adventurer® Tow Bar



BX7322, Adventurer™
adjustable A-frame tow bar

The Class III Adventurer® tow bar is perfect for part-timers. It is a universal option to safely tow up to 5,000 lbs. The adjustable legs expand up to 41" wide and allow safer and easier coupling and uncoupling. It folds easily for storage and requires a 2" ball. Safety cables are not included.

- 30912** Adventurer™ #BX7322 1



Strong As An Ox™



| | | | | | | | | | |
|---------------|---------|-------------------|------------|--------|------------------|----------------|-------------------|---------------|------------|
| In Section N: | Hitches | Hitch Accessories | Car Towing | Levels | Mirrors & Safety | Brake Controls | Towing Electrical | Brake & Wheel | Automotive |
|---------------|---------|-------------------|------------|--------|------------------|----------------|-------------------|---------------|------------|

Choosing Blue Ox® is like having a baseplate custom-made for your tow vehicle — only faster!

Our baseplates are easy on your suspension and even easier on the eyes. We've designed them with hidden reinforcement. We don't offer a one-size-fits-all support system, but rather a system that's shock absorbing and integrated into the individual bumper frame with the bumper design of your vehicle.

Our philosophy is to let the baseplate torsion, or flex, similar to receiver hitches. This allows the baseplate to absorb the forces of towing rather than rigidly transferring the forces to the frame of the vehicle.

Some models have state-of-the-art removable tabs that give you the option to remove your towing tabs so you can drive away leaving the "tow car" look behind.

Other models are equipped with durable, permanently attached tabs that give you the peace of mind of never having to replace lost or misplaced tabs.

There's no need to get on your knees or reach under your vehicle to unhook either! Both styles of tabs are conveniently located on the front portion of the baseplate. All Blue Ox® baseplates come with a three year warranty. Please see fit guide for tab style and model availability.

HAVING THE PERFECT FIT IS POSSIBLE!

- Bolts securely to the chassis
- Spreads towing force equally without undue stress
- Keeps weight placed on suspension to a minimum



BX1129,
2010 Jeep Compass



BX1992, 2008 Mercedes
Benz GL550 4Matic



Tab shown in and locked,
ready to tow.



Tab is removed leaving the
front clean!

Removable tabs on some models simply twist with attached pin to lock to your baseplate to tow or remove for safe storage. Removable tabs further enhance the aesthetics of Blue Ox® baseplates made for a variety of popular vehicles*.



31973 – BX1128, 2011 Jeep Grand
Cherokee with tow hook option



Strong As An Ox™

* For your specific automobile, see the Blue Ox® application guide. All Blue Ox® baseplates come with a three year warranty. Not all models are equipped with removable tabs. Some older models are standard tab.

In Section N:

Hitches

Hitch Accessories

Car Towing

Levels

Mirrors & Safety

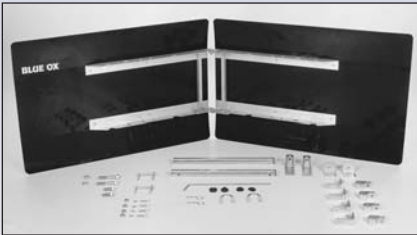
Brake Controls

Towing Electrical

Brake & Wheel

Automotive

Kargard™ Deflector



A polyethylene shield protects towed vehicle from road debris and folds for storage. Aluminum mounting equipment designed for quick and easy installation. All mounting hardware included.

30968 KarGard™ #BX8870 1

Kargard™ II Deflector



The KarGard™ II attaches to Blue Ox® motorhome mount tow bars at the triple lug bolt. The gas spring provides clearance for the RV's rear bumper when turning. It rolls up to the RV bumper for clean, out of the way storage when not in use.

S/O BX88255, KarGard™ II

Rise/Drop Receivers



Lowers or raises the 2" receiver connection to allow the towbar to be level when towing.

- 30917** 2" Rise/Drop #BX88128 1
- 30918** 4" Rise/Drop #BX88129 1
- 30919** 6" Rise/Drop #BX88130 1
- 30920** 8" Rise/Drop #BX88131 1
- 30921** 10" Rise/Drop #BX88132 1
- 30937** ^{LS} 6" Extended Drop (4" ext.) #BX88195 1
- 30927** ^{LS} Receiver Extension, extends 13-3/4" or 14-3/4" #BX88160 1
- 30935** ^{LS} Receiver Reducer, 2-1/2"-2" #BX88187 1
- 30948** ^{LS} Hi Lo 4" Receiver, 1-1/4" To 2", Black, CL IV #BX88221 1
- 30949** ^{LS} Adjustable Rise/Drop Receiver #BX88223 1

Towing Accessories Kit



Contains safety cables, bulb and socket kit, 6-wire electrical cable, 3 lock set, 4-diode kit and tow bar cover.

- 31222** 5,000 lb Kit, 6 wire (shown) #BX88109 1
- 31221** 10,000 lb Kit, 6 wire #BX88190 1

Includes the bulb and socket wiring kit, a 6-wire coiled electrical cable, 3-lock kit and a tow bar cover.

- 31234** Aventa® LX Accessory Kit #BX88229 1

Contains 7-6 electrical cable, bulb and socket kit, 3-lock set, 4-diode kit and tow bar cover.

- 30955** Aventa® LX 7-6 Accessory Kit #BX88231 1

Same accessories as shown above but includes only one 5/8" receiver lock, no cover and no diode kit

- 30956** ^{LS} 5,000# safety cables, 7-6 electrical cable, bulb and socket kit, 1-5/8" lock #BX88232 1
- 30957** ^{LS} 10,000# Motorhome mount 7 to 6 kit with 7 to 6 wire coiled electrical cable #BX88233 1

Universal Accessories Kit



Includes the bulb and socket wiring kit, a 6-wire coiled electrical cable, 1 receiver lock, and safety cables.

- 31204** 5,000# Tow Kit (Pictured) with 6 wire electrical cable #BX88191 1
- 31203** ^{LS} 10,000# Tow Kit with 6 wire electrical cable #BX88192 1

EZ Light Wiring Harnesses



EZ Light wiring harnesses allow you to connect your RV to your automobile's electrical system in as little as 15 minutes.

S/O BX88275-BX88285 & BX88278, See application guide for fit info.



Adapter Kits

Universal adapter kit adapts Valley, Reese®, DrawTite®, EazLift®, Universal, Husky® and other tow bars made from 1" x 2" tube to a Blue Ox® baseplate. S/O BX8833, Valley, Reese®, DrawTite®, Eaz Lift® Universal Adapter Kit

Adapts Blue Ox tow bar to a Reese bracket.

- 30915** Reese Adapter #BX88102 1

Adapts non-24" spaced Blue Ox® baseplates to receive A-frame, Rangefinder® and Rangefinder® II tow bars.

- 30922** RangeFinder II #BX88133 1

Blue Ox® triple lug kit for Roadmaster® adapter to Falcon™ All-Terrain™, Sterling All-Terrain™, and Eagle™ tow bars.

S/O BX88151, Steel Triple Lug Aventa® and Roadmaster Kit, 6,500 lb rated

Adapts Blue Ox® tow bar to Roadmaster® bracket. Includes cross bar.

S/O BX88178, Roadmaster® Adapter Kit

Adapts Blue Ox® tow bar to Roadmaster® bracket. Does not include cross bar.

S/O BX88185, Roadmaster Kit (Shown)

General purpose adapter kit adapts non-Blue Ox® baseplates to Blue Ox® tow bars with cross angle. Also a foundation to build your own baseplate to fit Blue Ox® tow bars.

S/O BX88230, General Purpose Adapter Kit

Blue Ox® triple lug kit for Roadmaster® adapter to Blackhawk® 2 All Terrain™ tow bars.

S/O BX88262, Steel Triple Lug Roadmaster®, Blackhawk® 2 All-Terrain™ Kit, Class IV rated



Hitch Immobilizers

Add comfort to your ride by eliminating the jerking motion common with many hitches. Eliminate the excess movement and rattling between the receiver hitch and the ball mount, tow bar or drop/rise receiver. Works on any receiver hitch and installs in seconds.

- 30928** Immobilizer I, 2" Receiver Hitch #BX88171 1
- 30951** Immobilizer II, 2.5" Dual U-Bolt (shown) #BX88225 1
- 30952** Immobilizer III, 2" (shown bottom) #BX88226 1
- 30953** Immobilizer III, 2.5" #BX88227 1



Strong As An Ox™

| | | | | | | | | | |
|---------------|---------|-------------------|------------|--------|------------------|----------------|-------------------|---------------|------------|
| In Section N: | Hitches | Hitch Accessories | Car Towing | Levels | Mirrors & Safety | Brake Controls | Towing Electrical | Brake & Wheel | Automotive |
|---------------|---------|-------------------|------------|--------|------------------|----------------|-------------------|---------------|------------|

Safety Cable Kits



Plastic-coated, aircraft-grade cable with heavy duty screw type connectors. Add additional security from baseplate to frame. Can be added after initial baseplate installation. Two per pack.

- 30938** 5,000# GVW, 7' Long (Shown) #BX88196 1
- 30939** 10,000# GVW, 7' #BX88197 1
- 30942** 5,000# 3', Permanent Baseplate Kit #BX88207 1
- 30943** 10,000# 3', Permanent Baseplate Kit #BX88208 1

Blue Ox® Locks



Secures your Blue Ox® tow bar to your baseplate and receiver hitch to prevent theft. Prevents accidental unhitching. 3 and 4-lock sets have matched keys.

Receiver Lock:

- 30961** 5/8" Class III-IV #BX8858 1
- 30962** 1/2" Class I-II #BX8859 1
- 30914** 3-Lock Kit, (1) 5/8" and (2) 1/2" #BX88101 1
- 30929** ^{LS} 4-Lock Kit, (2) 5/8" and (2) 1/2" (Shown) #BX88177 1
- 30944** ^{LS} 5/8" x 4" Class III-IV, (for use with 2-1/2" Receiver) #BX88212 1

Taillight Wiring Kits



The bulb & socket kit does not tap into the vehicle's existing wiring. Fits most vehicles with clearance in taillight. Operated by the towing vehicle.

- 30967** Wiring Kit, each #BX8869 1
- 30931** Bulb/Socket (less ribbon wire), Pk/10 #BX88184 1



Strong As An Ox™

Coiled Electrical Cables



Wire connectors are encased in silicone to resist corrosion. Allows for quick hooking and unhooking. The locking connector and expanding cable virtually eliminate accidental disconnecting. The cables expand from 1' to 7' and have trailer plug sockets included.

- 30963** 4-Wire Coiled Electric Cable (includes 2 female receptors) #BX8861 1
- 30964** 6-Wire Coiled Electric Cable (includes 2 female receptors) Shown #BX8862 1
- S/O SC9002, 6-Wire extra long, 12'

Includes one 4 or 6-way socket for your towed vehicle. Spade style 7-way round connector on one end, 4 or 6-way connector on the other. Designed for motorhomes with 7-way connectors. Eliminates the need for adapters.

- 30941** 7 to 6 Coiled Electric Cable (includes 1 female receptor) #BX88206 1
- S/O BX88254, 7 to 4-Wire Coiled Cable



Connects towed vehicle light system to the RV's wiring. Includes diodes to prevent electrical feedback.

- 30916** ^{LS} Taillight Diode Kit (9 diodes) #BX8811 1
- 30959** ^{LS} Taillight Diode Kit (3 diodes) #BX8847 1
- 30966** Diode Block, 6-amp #BX8864 1
- 30926** Diode Block, 12/Pack #BX88159 1
- 30960** Saturn Diode Block Kit (4 diodes) #BX8848 1

TOW BAR SERVICE PARTS (S/O)

-  84-0140, Replacement Pin Kit
-  62-3213, Quick Pin
-  229-0520, 1/2" Pin
-  84-0140, 4-Safety Cable Keeper Replacement Kit
-  84-0102, Rubber Boot Replacement Kit
-  84-0089, Aventa® II, Aventa® LX, Alexus®, and Aladdin® tow bar Washer Replacement Kit

Tow Bar Covers



Heavy-duty, vinyl-coated fabric covers keep your tow bar clean and protected when stored. Easily put on and taken off.

- 30969** Aventa® LX/Aladdin®/Aventa® II Alexus™ Tow Bar Cover #BX8875 1
- 30925** Acclaim™ (Shown Upper) #BX88156 1

Vinyl bag for carrying and storing accessories like tabs, cables, locks, etc. 13" long x 7" high. Keeps customer's trunk or basement clean.

- 30923** ^{LS} Vinyl Bag #BX88134 1

LED Wiring Kits



LED bulb & socket kits are brighter and smaller than traditional bulb & socket kits, allowing for ease of installation in compact taillight housings. These lights do not tap into the vehicle's existing wiring & are operated by the towing vehicle.

- S/O BX88267, Red LED Bulb Kit
- S/O BX88268, Red LED Kit (10)
- S/O BX88269, Clear LED Bulb Kit
- S/O BX88270, Clear LED Kit (10) (shown)

Fuse Bypass Switches

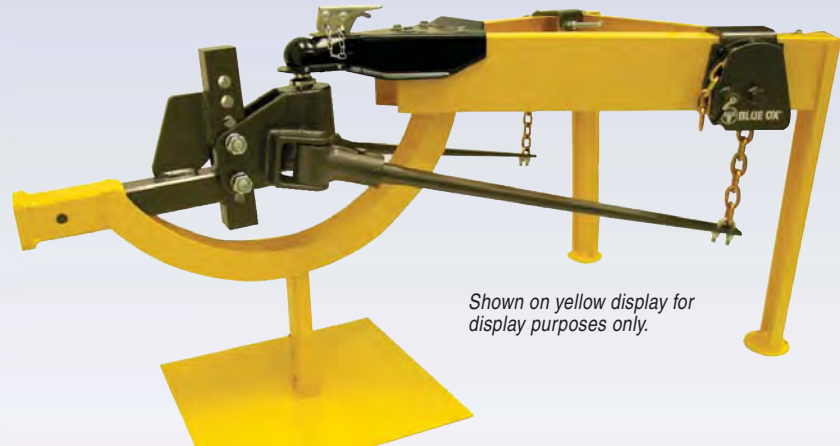


The Fuse Bypass Switches are available in four (4) different models (see application guide for fit information). These switches provide a safe alternative to the constant removal and reinstallation of the fuse when changing from the towed mode to the driving mode.

- S/O BX88271, ATM Fuse Bypass Switch, Short Lead (far left)
- S/O BX88272, ATM Fuse Bypass Switch, Long Lead (mid left)
- S/O BX88273, 2-ATM Fuse Bypass Switch, 2-Circuit (mid right)
- S/O BX88274, Fuse Bypass Switch, High Current (far right)

**GO WITH
THE PRO —
SWAYPRO!**

SwayPro™ Weight Distributing Hitch



Shown on yellow display for display purposes only.

Stop sway before it begins with SwayPro™, the new standard in weight distributing hitches.

SwayPro™'s innovative and unique features combine everything you are looking for in a weight distribution hitch with built-in sway control. The revolutionary Signature Series rotating latches safely and securely tighten the spring bar chains, controlling sway at the source. The SwayPro™ hitch head is chocked full of features you'll appreciate with the convenient grease zerks — no more messy spring bars or washers to adjust! Self-locking spring bars eliminate the need for pins and clips. All those features in one hitch, along with the ability to back up without disconnecting are what make SwayPro™ the most user friendly hitch on the market.

- Easy hook up and disconnect
- Snap in spring bar design eliminates pins or clips
- Bars will not slip out and revolutionary rotating bracket
- Built-in sway control
- Durable powder coat finish
- Simple, precise weight distribution
- No noise



1 - Signature Series rotating latches eliminate the need for pins and clips.



2 - Built-in weight distribution provides ease of installation and eliminates the need for adjustments.



3 - Built-in sway control on the head unit, spring bars and Signature Series rotating latches eliminate side-to-side trailer sway and chain rattling. No need to disconnect sway control when backing up.



4 - Grease zerk allows spring bars to stay clean and free of grease.



Strong As An Ox™



| | | | | | | | | | |
|---------------|---------|-------------------|------------|--------|------------------|----------------|-------------------|---------------|------------|
| In Section N: | Hitches | Hitch Accessories | Car Towing | Levels | Mirrors & Safety | Brake Controls | Towing Electrical | Brake & Wheel | Automotive |
|---------------|---------|-------------------|------------|--------|------------------|----------------|-------------------|---------------|------------|

Rotating Latch Brackets



The Signature Series rotating latch brackets found on the Blue Ox® SwayPro™ are now available separately to fit all models of weight distribution hitches with chains.

Most hitches on the market today utilize snap-up chain brackets which allow the chain to sway freely. The Signature Series rotating latch bracket's wrap around design allows you to hook up more quickly and with less hassle than traditional snap-up methods, but also allows you to back up without having to disconnect. Additionally, the Signature Series latch provides the clearance necessary for enclosed trailer frames, propane bottles and battery compartments not available with snap-up brackets.

Easy to use and loaded with the features you want, that's the Blue Ox® Signature style!

SWAYPRO™ NEW IMPROVED HITCHES (Bolt-on Signature Series Latch)

This universal series will fit V-nose trailers.

NEW! Hitch SwayPro, Drill & Bolt-on:

- 30502** 550-lb #BXW0551 1
- 30503** 750-lb #BXW0751 1
- 30504** 1000-lb #BXW1001 1
- 30505** 1500-lb #BXW1501 1

SWAYPRO™ HITCHES (Clamp-on Bracket)*

Original series can be used in applications other than V-nose trailers.

NEW! Hitch SwayPro, Clamp-on (and also with the latch added)*:

- 31530** 550-lb #BXW0550 1
- 31543** 750-lb #BXW0750 1
- 31558** 1000-lb #BXW1000 1
- 31562** 1500-lb #BXW1500 1

* As a running change, the clamp-on version will now come with the latch as well.



NEW! SwayPro Rotating Latch

Spring Bar Kits



If you switch trailers, don't buy a new hitch, just buy the bars. All head assemblies for SwayPro™ models are the same, but interchangeable spring bars allow an increase or decrease in capacity for proper towing. Beveled ends lock into place with a spring pin without grease for clean use and storage.

NEW! SwayPro Spring Bar Kit:

- 31205** 550# (Shown) #BXW4005 1
- 31230** 750# #BXW4006 1
- 31232** 1000# #BXW4007 1
- 31258** 1500# #BXW4008 1

Head Assembly Kit



No more clumsy washers or repeated adjustments! SwayPro™ offers a unique design that angles the head perfectly to ensure your load is

level in less than half the

time of other weight distribution units. Towing capacity settings are pre-set but are easily adjustable.

S/O BXW4011, Std. hitch head
S/O BXW4012, Underslung hitch head

Trailer Balls



Solid steel, plated and heat treated for extra strength, these trailer balls allow for extra clearance when using a 6" or higher frame widths. For use with SwayPro™ or other weight distributing hitches. Rated at 25,000 lb gross trailer weight.

- 30945** 2-5/16" x 1-1/4" x 1" Rise #BX88213 1

S/O BX88214, 2-5/16" x 1-1/4" dia. x 2" Rise
S/O BX88234, 2-5/16" x 1-1/4" x 2-1/4"

Hitch Shanks



Use these 2" x 2" adjustable bars in the raised or dropped position. Long hitch bars provide the extra length for bumper

clearance and hold a gross load rating to 15,000 lb and a tongue load rating of 1,500 lb.

- S/O BXW4000, 6 Hole x 11"
- S/O BXW4001, 6 Hole x 14" (Shown)
- S/O BXW4002, 8 Hole x 11"
- S/O BXW4003, 8 Hole x 14"
- S/O BXW4004, 10 hole x 11"

THEY'RE
ANYTHING
BUT
ORDINARY



Strong As An Ox™

BLUE OX GOOSENECK HITCHES

In Section N:

Hitches

Hitch Accessories

Car Towing

Levels

Mirrors & Safety

Brake Controls

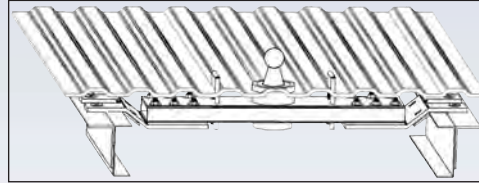
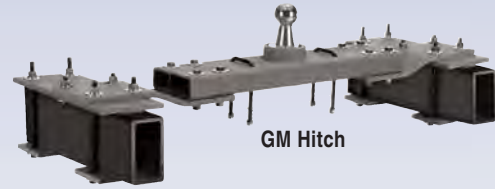
Towing Electrical

Brake & Wheel

Automotive

**STRONG
AS AN OX
WITHOUT
ALL THE
BULL**

Our gooseneck hitch bolts directly to the truck frame, using existing bolts and holes when possible, and requires only a four-inch hole in the truck bed for the ball cylinder. No welding or lifting of the truck bed is required! **Please see Blue Ox® application guide for additional applications.**



- 30,000 lb. gross capacity, 7,500 lb. tongue capacity
- Self-locking ball
- Ball inverts and stores below the truck bed — no levers!
- Proper load placement on truck frame and suspension
- Mounting hardware constructed of solid 1/2" material
- Requires one 4" hole for ball
- Flush-with-the-floor hitch design
- Simple under bed installation
- Modular design for increased strength

1. The Revers-A-Ball has a spring-loaded locking mechanism to secure the ball in place. Unlatch the ball by pushing the safety thumb lock to release then rotate and remove the ball.
2. Invert the ball and place back into the socket, maximizing precious truck bed space.

CHEV / GMC GOOSENECK HITCH FITS

S/O DH1301 '99-'07, 2500 Short Bed (Includes HD) Long Bed Dually, 3500 Short Bed (Includes HD & Dually)

30993 ^{LS} '99-'07 2500, 3500 Long Bed (Includes HD, No Dually) #DH1302 1

30995 ^{LS} '88-'98 2500 Long & Short Bed #DH1303 1

30995 ^{LS} '99-'03 3500 Classic Body Style #DH1303 1

S/O DH1304 '07N-'10, 2500, 3500 Short Bed (Includes HD)

S/O DH1305 '08-'10, 2500, 3500 Long Bed (Includes HD)

S/O DH1307 '07-13, 1500 Short Bed

S/O DH1308 '11-'13, 2500, 3500 Long & Short Bed

DODGE GOOSENECK HITCH FITS

30985 ^{LS} '94-'02 1500, 2500, 3500 Long & Short Bed #DH1101 1

30986 ^{LS} '03-'08 1500 Mega Cab Long & Short Bed (Includes HD) #DH1102 1

30986 ^{LS} '03-'12 2500, 3500 Long & Short Bed (Includes HD & Mega Cab) #DH1102 1

30987 ^{LS} '03-'07 1500 Long & Short Bed (Not Mega Cab, Not HD) #DH1103 1

S/O DH1104 '03-'08 1500 Long & Short Bed (Not Mega Cab, Not HD)

S/O DH1105 '09-'12 1500 Long & Short Bed (Includes HD)

FORD GOOSENECK HITCH FITS

30988 ^{LS} '99-'07 F-250, F-350 Long & Short Bed (Includes Super Duty) #DH1201 1

S/O DH1202 '93-'97, F-250, F-350 Long & Short Bed

S/O DH1203 '08-'10, F-250, F-350, F-450 Long & Short Bed (Includes Super Duty)

S/O DH1204 '11-'12, F-250, F-350, F-450 Long & Short Bed (Includes Super Duty)

S/O DH1205 '04-'12, F-150 Long & Short Bed

TOYOTA GOOSENECK HITCH FITS

S/O DH1400 '07-'13 Toyota Tundra



Strong As An Ox™



BLUE OX TRACK BARS & STEERING CONTROL

TOWING
& SAFETY

N

In Section N: | Hitches | Hitch Accessories | Car Towing | Levels | Mirrors & Safety | Brake Controls | Towing Electrical | Brake & Wheel | Automotive

TigerTrak™ Track Bars



TigerTrak™ eliminates side shift of the axle in relation to the frame of the chassis on the coach. This shift gives the sensation of movement, which the driver then tries to correct by turning the steering wheel. More times than not, this results in over-steering that actually amplifies the situation. Unwanted movements of the axle in addition to over-steering can result in driver fatigue and instability when driving.

Please see Blue Ox® application guide for specific model information.

- 31000** ^{LS} thru '08, Chevrolet P-32 (19.5" wheels/tires) Rear Spring U-bolts #TT2300 1
- 31001** ^{LS} thru '05, Chevrolet P-30 (16" wheels/tires) Rear Spring U-bolts #TT2301 1
- S/O thru '11, Chev/GM C-Class G series #TT2308
- 31005** thru '12, Ford F53 (14,000-18,000 GVW Chassis) Rear Bar Kit #TT2400 1
- 31006** thru '12, Ford F53 (20,000-22,000 GVW Chassis) Rear Bar Kit #TT2401 1
- 31007** ^{LS} thru '12, Ford E-350 (C Chassis) Rear Bar Kit #TT2402 1
- 31007** ^{LS} thru '04, Ford E-450 (C Chassis) Rear Bar Kit #TT2402 1
- S/O thru '11, Ford F53 (V10) Front Bar Kit #TT2403
- S/O thru '05, Ford F53 (V-8) Front Bar Kit #TT2404
- S/O thru '05-'12, Ford E-450 (C Chassis) Rear Bar Kit #TT2450
- S/O thru '12, Kodiak 4500-5500 Chassis (No Factory Air Ride) Rear Bar Kit #TT2500
- S/O thru '12, Kodiak 4500-5500 Chassis (No Factory Air Ride) Front Bar Kit #TT2501
- 31000** ^{LS} thru '08, Workhorse P32 (19.5" wheels /tires) Rear Bar Kit #TT2300 1
- 31002** thru '11, Workhorse W20, W21, W22, W24 Rear Bar Kit #TT2302 1
- 31003** ^{LS} thru '11, Workhorse W16-W18 Front Bar Kit #TT2304 1
- 31004** ^{LS} thru '11, Workhorse W16, W18 Rear Bar Kit #TT2306 1

TigerTrak™ illustrated on motorhome axle.



- Designed for spring suspension motorhomes
- Improves handling • Reduces the affect of oncoming and passing trucks • Eliminates over-steering • Minimizes driver fatigue • Front and/or rear axle applications available • Bolt on installation; no welding or drilling required.

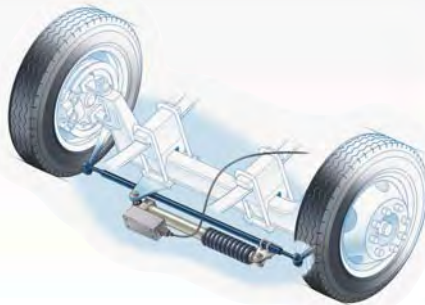
TruCenter® Steering Control



TruCenter® does away with white-knuckled driving and helps to reduce driver fatigue while also minimizing tire and front end wear. Maintain control of your steering through wind gusts, passing trucks, rough roads and even sudden events like blowouts or dropping onto a soft or low shoulder. Built for convenience, the push button adjustment allows for on-the-move steering correction to compensate for side winds and road crown. Mounting brackets must be ordered separately.

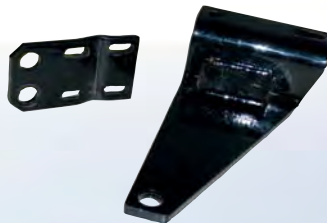
Please see Blue Ox® application guide for specific model information.

- 30999** TruCenter 270 lb, 35" #TC35270 1



TruCenter® illustrated on motorhome axle

TruCenter® Mounting Brackets



- Attaches the TruCenter™ to the axle and the tie rod
- Custom fit to chassis
- Easy installation
- Powder coated finish

See Blue Ox® application guide for specific model information

ROAM THE COUNTRY, NOT THE ROAD!



Strong As An Ox™

SLIP DOESN'T HAVE TO HAPPEN TO YOU!

A crunched bed that could have been saved if the BedSaver™ was used.
Don't let this happen to you!



Blue Ox Bed Saver

Save your bed before you slip up.

It's not a matter of if, but a matter of when. Just think about it. You get ready for a well-planned, well-deserved trip. You check your truck tires, get a tune-up and pack the first-aid kit because you just never know what can happen. Fifth wheel owners need one more item to complete their safety check — a Blue Ox® BedSaver™. Dropping your fifth wheel is more common and dangerous than you might think. With BedSaver™, you can put those worries to rest. The BedSaver™ works for your towing truck by literally “catching” the kingpin if it slips off of the coupler. Blue Ox® BedSaver™ comes with a one year warranty. See fit guide for more information.



Blue Ox® BedSaver™ shown in yellow for display purposes only.

This inexpensive, hassle-free safety device is a “must have” for every fifth wheel puller. With BedSaver™, you can forget about dropping your fifth wheel - and forget about the potential danger, damage, expense, and embarrassment!

The Bedsaver is a sound investment with great returns for all fifth wheel pullers. Dropping a fifth wheel is more common than you think! With a BedSaver™ you can put that worry to rest and give your pickup bed rails a break. The BedSaver® is great insurance for fifth wheel trailer owners.

- No moving parts. Bedsaver is always ready and requires little maintenance after installation
- Easy to install, requiring no drilling or hitch modification
- Hardware and instructions are included
- Trailer loads and unloads normally
- Black powder coated finish matches most hitches, blending so well it's difficult to tell it's even there
- Catches the pin and holds it SAFE AND SECURE

Please see Blue Ox® application guide for specific model information.

BED SAVER

30974 For Draw-Tite 14K, 15K & 16K Classic Hitches, Reese 14K, 15K & 16K Classic & Select Hitches #BXR4100 1

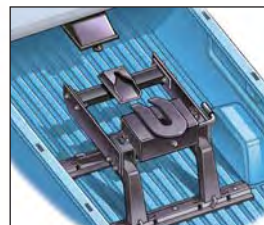
30975 ^{LS} For Draw-Tite 14K-15K-16K Sliders, Reese 14K, 15K & 16K Sliders #BXR4101 1

30976 ^{LS} For Draw-Tite 18K, 20K & 22K Hitches, Reese 18K, 20K & 22K Hitches (NO 18K Select Plus) #BXR4102 1

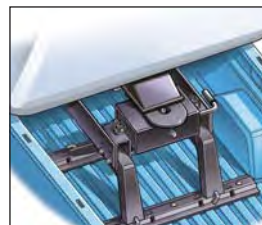
30977 For Reese 16K Select, 18K Select Plus, Pro Series 15K & 18K Hitches #BXR4103 1

30978 For Husky 16 K S, 16K & 16K Sliders, Curt E5, Valley 16K & 16K Sliders, Draw-Tite 16K Model 6032 #BXR4400 1

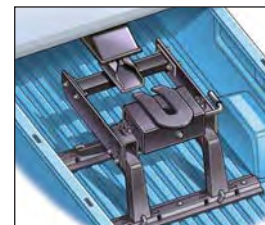
With BedSaver — safety and security



Fifth wheel hitch with BedSaver in place.



Fifth wheel kingpin fails to seat properly and slips off hitch.



Fifth wheel kingpin slips onto BedSaver — great catch!



Strong As An Ox™



Motorcycle Carriers



Motorcycle Carrier I mounts in existing receiver of motorhome. Additional 1-1/2" receivers are included and will need to be mounted to the frame of the coach; some welding may be required.

- Loading ramp included
- Can be stored when not in use
- Tie-down mounts built in
- Flat tow up to 5,000 lb (no trailers)
- 1,000 lb weight capacity.

S/O SC2000, Motorcycle Carrier I



Motorcycle Carrier II mounts in receiver of pick up or SUV and is simple to install and remove.

- Loading ramp included
- Can be stored when not in use
- Easy assembly and storage
- Uses existing receiver
- 600 lb weight capacity.

S/O SC2001, Motorcycle Carrier II

SportLoader™



The Blue Ox® SportLoader™ provides a simple and effective method of loading and hauling a motorcycle while also providing the ability to tow a trailer, camper, or travel trailer. Pivot tube required. **See Blue Ox® application guide.**

- The motorcycle rides less than one inch above bed of truck
- Removable ramps store in bed of truck
- Easy one person loading and unloading using electric motor.

S/O SC3000, SportLoader™, 8', Long Box
S/O SC3001, SportLoader™, 6', Short Box

SportLift™ III



- One person loading and unloading at ground level • 1,000 lb weight capacity
- Tie-down locations built-in
- Electric winch
- Flat tow up to 5,000 lbs (no trailers)
- Requires 3-receiver hitch (not included).

S/O SC4200, SportLift™ III

SportCarrier I



- 48" x 84" steel deck can carry a motorcycle, golf cart or ATV
 - Removable tire stop
 - Flat tow up to 5,000 lb (no trailers)
 - Loads curb-side or street-side
 - Tie-down locations built into deck
 - 1,000 lb weight capacity
 - Requires 3-receiver hitch (not incl.)
- Ramps sold separately.

S/O SC2100, SportCarrier™ I

SportLoader™ (... continued)



Sportloader™ Accessories

- SC9010, SportLoader™ Mainframe
- 18" Extension (use SC3000/01)
- SC9012, SportLoader™ Support Stand
- SC9026, Ramp Extension (SC3000/01)
- SC9028, Golf cart and ATV adapters (use with SC3000/01)

ONE YEAR WARRANTY ON ALL BLUE OX® CARRIERS!
NOTE: Please verify motorhome chassis capacity rating before purchase, as some coaches do not support carriers or SportLifts™.

SportCarrier™ II



- 48" x 84" steel deck can carry a motorcycle, golf cart or ATV
 - Removable tire stop
 - Loads curb-side or street-side
 - Tie-down locations built into deck
 - 1,000 lb weight capacity
- Requires 3-receiver hitch (not included)
Ramps sold separately.

S/O SC2102, SportCarrier™ II

TailGator®



The Tailgator® prevents damage to tailgate and supports the cables from undue stress.

- Pins directly into standard 2" rcvr
- Adjustable for any application
- 1,000 lb capacity
- Loading ramps available separately.

S/O SC1200, TailGator®

Light Bar



Fits in a standard receiver of the towed vehicle to provide the lights required for towing. Shown folded in storage position.

30940 ^{LS} Light Bar #BX88199 1

CARRIER ACCESSORIES

- S/O SC9000, 3-Receiver Hitch
- S/O SC9002, 6-Wire, 12' Coiled Electrical Cable
- S/O SC9003, Tire Support 3-1/2"
- S/O SC9004, Tire Support 6-1/2"
- S/O SC9005, Kit, Lights, Bolt-on
- S/O SC9006, Kit, Bumper Pads
- S/O SC9007, Motorcycle Rear Tire Guide
- S/O SC9008, Bicycle Holder
- S/O SC9009, Ramp Bracket Kit, Bumper Pads
- S/O SC9011, Tie-down Ratchet
- S/O SC9016, Bike Holder, Sport Carrier, Small
- S/O SC9056, Adjustable Tire Support Mount Bracket



Strong As An Ox™

| | | | | | | | | | |
|---------------|---------|-------------------|------------|--------|------------------|----------------|-------------------|---------------|------------|
| In Section N: | Hitches | Hitch Accessories | Car Towing | Levels | Mirrors & Safety | Brake Controls | Towing Electrical | Brake & Wheel | Automotive |
|---------------|---------|-------------------|------------|--------|------------------|----------------|-------------------|---------------|------------|



Strong As An Ox™

Baseplate Application Guide

Baseplate application information is complete as of the publication date of this guide.
For updated information, see: <http://www.blueox.us/Baseplates/baseplates.htm>

NOTE: THE AVAILABILITY OF A BASEPLATE IN NO WAY INDICATES TOWABILITY OF A VEHICLE. IT IS THE SOLE RESPONSIBILITY OF THE VEHICLE OWNER TO DETERMINE WHETHER OR NOT A VEHICLE CAN BE FLAT TOWED AND WHAT ADDITIONAL EQUIPMENT MAY BE REQUIRED TO DO SO.

*IR=Installation Rating – WR=Wiring Kit – WT=Ship Weight – TY=Baseplate Design – H=Tab Weight – W=Tab Width
T=Towable (see terminology) – S=Standard Tab – R=Removable Tab – D=Duncan Bracket Kit*

| YEAR | MODEL | NOTES | PART# | TY | IR | WR | WT | H | W |
|------------------|---|---------------------|--------------|----|----|----|----|--------|--------|
| ACURA | | | | | | | | | |
| 02-03 | MDX | T,1,2,3,6,13,15,47 | 31091 | R | 3 | B | 43 | 25 1/2 | 24 |
| 04-06 | MDX | 1,3,6,13,15,47 | 31984 | R | 3 | B | 39 | 26 1/4 | 25 |
| BMW | | | | | | | | | |
| 02-06 | Mini Cooper (Incl. S) (Manual Transmission Only) | 1,2,13,47 | 31109 | R | 2 | B | 30 | 10 1/2 | 18 |
| 07-08 | Mini Cooper Convertible (Including S) | 1,2,13,47 | 31109 | R | 2 | B | 30 | 10 1/2 | 18 |
| 07-10 | Mini Cooper S, Convertible and Clubman | 1,2,3,4,13,47 | 31731 | R | 3 | B | 40 | 13 1/2 | 20 |
| 11-12 | Mini Cooper (Incl. S Convertible & Roadster) | 1,2,3,4,13,47 | 31731 | R | 3 | B | 40 | 13 1/2 | 20 |
| 11-12 | Mini Cooper Countryman | 1,2,3,4,12,13,47 | 32003 | R | 3 | B | 56 | 14 | 20 |
| BUICK | | | | | | | | | |
| 08-13 | Enclave | 1,2,3,4,13,47 | 31115 | R | 4 | B | 37 | 16 1/4 | 21 3/4 |
| 04-07 | Rainier (Must have metal bumper) | 1,2,3,4,11,15,47 | 31018 | R | 3 | B | 46 | 15 1/2 | 18 |
| CADILLAC | | | | | | | | | |
| 02-06 | Escalade (Incl. EXT) | 3,11,15,47 | 31308 | R | 2 | B | 31 | 17 | 30 1/4 |
| 07-12 | Escalade (Includes Hybrid) | 2,3,11,15,32,47 | 31057 | R | 2 | 48 | 23 | 17 1/4 | 31 1/4 |
| 11-12 | NEW! Escalade Platinum Hybrid | 1,2,3,12,13,26,47 | 30561 | R | 2 | 48 | 30 | 17 1/2 | 23 1/4 |
| 10-12 | SRX4 | 1,3,4,11,12,13,47 | 31739 | R | 3 | 48 | 58 | 16 1/2 | 18 |
| CHEVROLET | | | | | | | | | |
| 02-06 | Avalanche 1500 | T,2,3,11,15, 47 | 31308 | R | 2 | B | 31 | 17 | 30 1/4 |
| 07-13 | Avalanche 1500 | 2,3,4,9,11,47,51 | 31057 | R | 2 | 48 | 23 | 17 1/4 | 31 1/4 |
| 09-11 | Aveo Incl. foglights, Manual Only | T,1,2,2,3,1,12,47 | 31937 | R | 3 | B | 48 | 14 | 17 5/8 |
| 00-05 | Cavalier (Incl. Z24) | T,1,2,3,13,15 | 31090 | R | 3 | B | 42 | 12 3/4 | 19 1/2 |
| 05-08 | Cobalt (No Turbo) | 1,2,3,4,13 | 31041 | R | 3 | B | 31 | 14 1/4 | 20 |
| 09-10 | Cobalt (No Turbo) | 1,2,3,4,13,47 | 31736 | R | 3 | B | 33 | 14 1/4 | 20 |
| 04-12 | Colorado | 1,3,5,9,11,45 | 31026 | S | 3 | B | 24 | 19 1/2 | 19 |
| 11-13 | Cruze Eco (Must trim Active Air Shutter System Louver) | 1,2,3,4,12,13,47,53 | 32002 | R | 3 | B | 45 | 14 1/4 | 20 |
| 11-13 | Cruze RS | 1,2,3,4,12,13,47 | 32071 | R | 3 | B | 44 | 14 1/4 | 20 |
| 10-13 | Equinox | 1,2,3,4,13,47 | 31738 | R | 3 | B | 47 | 15 1/2 | 24 |
| 06-10 | HHR SS W/Turbo | 1,2,3,13,47 | 31720 | R | 3 | 48 | 22 | 11 | 22 |
| 06-11 | HHR | 1,2,3,13,47 | 31818 | R | 3 | 48 | 49 | 11 | 22 |
| 97-03 | Malibu <i>Limited Supply</i> | T,1,2,3,4,13,15,47 | 31075 | R | 3 | B | 49 | 13 1/2 | 24 |
| 04-05 | Malibu Classic <i>Limited Supply</i> | T,1,2,3,4,13,15,47 | 31075 | R | 3 | B | 49 | 13 1/2 | 24 |
| 08-12 | Malibu | 1,2,3,4,6,13,15 | 31763 | R | 3 | 48 | 40 | 15 | 22 1/2 |
| 99NS-07 | Pickup 1500, 2WD/4WD | 3,11,15,32,51 | 31308 | R | 2 | B | 41 | 17 | 30 1/4 |
| 99-06 | Pickup 1500 (2WD, Non HD models) | 3,11,15,32,47,51 | 31308 | R | 2 | B | 31 | 17 | 30 1/4 |
| 07-13 | Pickup 1500 New Style (2WD & 4WD), No Heavy Duty | 3,4,9,11,47,51 | 31023 | R | 1 | 48 | 25 | 15 3/4 | 31 1/2 |
| 04-06 | Pickup 2500 (2WD/4WD, Incl. Heavy Duty) | 3,9,11,47,51 | 31063 | R | 1 | B | 27 | 16 1/2 | 32 1/4 |
| 99NS-07 | Pickup 2500 Classic (2WD/4WD, Incl. Heavy Duty) | 3,9,11,47,51 | 31063 | R | 1 | B | 27 | 16 1/2 | 32 1/4 |
| 07-10 | Pickup 1500,2500,3500 New Style (2WD/4WD, Incl. Heavy Duty) | 2,3,9,11,47,51 | 31935 | R | 1 | B | 28 | 15 1/2 | 31 1/2 |
| 11-13 | NEW! Pickup 2500,3500 (2WD/4WD, Incl. Heavy Duty) | 1,3,9,12,13,4,7 | 31644 | R | 1 | B | 30 | 15 1/2 | 31 1/2 |
| 06 | Pickup 3500 (2WD/4WD, Incl. Heavy Duty) | 3,9,11,47,51 | 31063 | R | 1 | B | 27 | 16 1/2 | 32 1/4 |
| 12-13 | NEW! Sonic Turbo (Includes Turbo) | 1,2,3,9,13,26 | 31263 | R | 2 | B | 35 | 13 1/2 | 18 |
| 99NS-06 | Suburban 1500 | 3,11,15,32,47 | 31308 | R | 2 | B | 31 | 17 | 30 1/4 |
| 07-12 | Suburban 1500 | 2,3,4,9,11,47 | 31057 | R | 2 | B | 23 | 17 1/4 | 31 1/4 |

BLUE OX BASE PLATES

**TOWING
& SAFETY**

N

| | | | | | | | | | |
|---------------|---------|-------------------|------------|--------|------------------|----------------|-------------------|---------------|------------|
| In Section N: | Hitches | Hitch Accessories | Car Towing | Levels | Mirrors & Safety | Brake Controls | Towing Electrical | Brake & Wheel | Automotive |
|---------------|---------|-------------------|------------|--------|------------------|----------------|-------------------|---------------|------------|

| YEAR | MODEL | NOTES | PART# | TY | IR | WR | WT | H | W |
|----------------------------------|---|---------------------|--------------|----|----|----|----|--------|--------|
| CHEVROLET (... continued) | | | | | | | | | |
| 00-06 | Tahoe 1500 | 3,11,15,32,47 | 31308 | R | 2 | B | 31 | 17 | 30 1/4 |
| 07-12 | Tahoe 1500 (No Hybrid) | 2,3,11,15,32,47 | 31057 | R | 2 | 48 | 23 | 17 1/4 | 31 1/4 |
| 99-04 | Tracker (2WD/4WD, incl. ZR2) | 1,3,13,15,47 | 31064 | R | 3 | B | 35 | 16 3/4 | 25 1/2 |
| 09-12 | Traverse | 1,2,3,4,13,47 | 31936 | R | 3 | B | 37 | 16 | 20 |
| 02-09 | Trailblazer (Incl EXT) (Must have metal bumper) | 1,2,3,4,11,15,47 | 31018 | R | 3 | B | 46 | 14 1/2 | 18 |
| CHRYSLER | | | | | | | | | |
| 05-10 | PT Cruiser (Incl Convertible & Turbo) | 1,2,3,13,47 | 31069 | R | 3 | B | 46 | 12 1/2 | 25 |
| DODGE | | | | | | | | | |
| 97-04 | Dakota (2WD/4WD, Incl. Quad Cab) | 1,2,3,15,31,47 | 31068 | S | 2 | B | 33 | 18 | 24 |
| 05-07 | Dakota (2WD/4WD, Incl. Quad Cab) | 1,3,4,9,13 | 31066 | R | 2 | 48 | 35 | 17 1/2 | 20 |
| 08-12 | Dakota (2WD/4WD, Incl. Quad Cab) | 1,2,3,13,47 | 31982 | R | 3 | 48 | 43 | 16 1/2 | 23 3/8 |
| 98 | Durango (2WD/4WD) | 1,2,3,15,47 | 31068 | S | 2 | B | 33 | 18 | 24 |
| 99-03 | Durango (2WD/4WD, Incl. V8 Magnum) | 1,2,3,15,47 | 31068 | S | 3 | B | 33 | 18 | 24 |
| 11-13 | Durango (Includes Adaptive Cruise Control) | 1,2,3,9,12,13,47 | 31973 | R | 3 | B | 35 | 17 1/2 | 34 3/4 |
| 07-11 | Nitro | 1,3,13 | 31095 | R | 3 | B | 37 | 17 1/2 | 20 |
| 09-12 | Ram Pickup 1500 (2WD/4WD) | 2,3,9,12,47,51 | 31938 | R | 3 | B | 31 | 18 | 34 1/2 |
| 03-12 | Ram Pickup 2500 | 1,3,4,9,11,47,51 | 31743 | S | 2 | B | 36 | 25 1/2 | 24 |
| 03-12 | Ram Pickup 3500 | 1,3,4,9,11,47,51 | 31743 | S | 2 | B | 36 | 25 1/2 | 24 |
| FORD | | | | | | | | | |
| 07-10 | Edge | 1,2,3,4,6,13,47 | 31073 | R | 3 | 48 | 47 | 26 1/2 | 26 |
| 11-13 | NEW! Edge (Includes Eco Boost and Adaptive Cruise Control) | 1,2,3,4,6,12,13,47 | 31346 | R | 3 | 48 | 47 | 26 1/2 | 26 |
| 05-08 | Escape (Manual Transmission Only) | 1,2,12,13,47 | 31092 | R | 2 | B | 41 | 18 1/4 | 18 |
| 05-08 | Escape Hybrid (Automatic Transmission) | 1,2,12,13,47 | 31092 | R | 2 | B | 41 | 18 1/4 | 18 |
| 09-12 | Escape (Incl Hybrid) | 1,2,12,13,47,49 | 31714 | R | 2 | B | 42 | 17 | 22 |
| 02-05 | Explorer | 1,3,4,12,15,47 | 31084 | S | 2 | B | 44 | 21 | 18 |
| 06-10 | Explorer | 1,2,3,13,47 | 31201 | R | 3 | B | 41 | 24 | 20 |
| 11-13 | NEW! Explorer (No Adaptive Cruise Control) | 1,2,3,4,13,47 | 31645 | R | 3 | 48 | 51 | 15 1/2 | 24 |
| 11-13 | Explorer (With Adaptive Cruise Control & Eco Boost) | 1,2,3,4,12,13,47 | 32009 | R | 3 | 48 | 58 | 18 1/2 | 20 |
| 07-10 | Explorer Sport Trac | 1,2,3,13,47 | 31201 | R | 3 | B | 41 | 24 | 20 |
| 11-13 | NEW! Fiesta (No EcoBoost) | 1,25,3,4,6,12,13,47 | 31646 | R | 3 | B | 46 | 13 3/4 | 20 |
| 09-12 | Flex (No EcoBoost) | 1,2,3,4,6,13,47 | 31439 | R | 3 | | 43 | 24.25 | 24 |
| 10-12 | NEW! Flex with EcoBoost | 1,2,3,4,6,13,47 | 31321 | R | 3 | | 56 | 24.25 | 24 |
| 08-11 | Focus (Manual transmission only) | 1,2,3,13,47 | 31987 | R | 3 | 48 | 48 | 13 | 20 |
| 12-13 | NEW! Focus Titanium (No Adaptive Cruise Control) | 1,2,3,4,12 | 31647 | R | 3 | B | 36 | 14 1/2 | 17 1/2 |
| 10-12 | Fusion (Includes Hybrid) | 1,2,3,4,6,13,47 | 31940 | R | 4 | B | 53 | 14 3/4 | 19 1/2 |
| 04-08 | Pickup F150 (2WD/4WD) (No Heritage Edition & FX2) <i>Limited Supply</i> | 3,9,11,47,51 | 31067 | S | 2 | B | 35 | 14 1/2 | 29 1/4 |
| 09-13 | Pickup F150 (2WD/4WD) (No Heritage, Harley, FX2 or Eco Boost) | 1,3,9,12,47,51 | 31753 | R | 3 | B | 30 | 16 | 32 |
| 07-08 | Pickup F150 XLT Super Cab (4WD) | 3,9,11,47 | 31067 | S | 2 | B | 35 | 14 1/2 | 29 1/4 |
| 07 | Pickup F150 Lariat Super Crew (4WD) | 3,9,11,47 | 31067 | S | 2 | B | 35 | 14 1/2 | 29 1/4 |
| 11-13 | Pickup F150 Raptor | 3,9,12,13,47 | 32005 | R | 2 | B | 30 | 20 | 34 |
| 12-13 | NEW! Ford F150 with EcoBoost | 1,3,9,12,47 | 31347 | R | 3 | B | 30 | 20 | 35 |
| 08-13 | Pickup F250, Diesel (Includes 2WD/4WD & SD) | 3,11,15,44,47 | 31756 | R | 2 | B | 41 | 23 1/2 | 34 1/2 |
| 11-13 | Pickup F350 (2WD/4WD, Incl. Super Duty) | 1,3,9,11,52 | 32011 | S | 2 | 48 | 67 | 22 1/4 | 31 7/8 |
| 98-06 | Ranger Pickup (2WD, Not Northland) | 1,3,4,15,47 | 31072 | S | 3 | B | 39 | 17 | 24 |
| 07-11 | Ranger Pickup (2WD) | 1,3,9,12,47 | 31099 | R | 1 | B | 38 | 18 1/2 | 18 |
| 07-11 | Ranger Pickup (4WD) | 1,3,4,9,13,47 | 31747 | R | 2 | B | 39 | 21 | 17 |
| 11 | Ranger Sport (2WD) | 1,3,4,9,13,47 | 31747 | R | 2 | B | 39 | 21 | 17 |
| 00 | Ranger Pickup (4WD, Not Northland) | 1,3,4,15,47 | 31072 | S | 3 | B | 39 | 17 | 24 |
| 01-06 | Ranger Pickup (4WD) | 1,2,3,15,47 | 31079 | S | 2 | B | 23 | 17 | 24 |
| 01-05 | Ranger Pickup Edge (2WD/4WD) | 1,2,3,15,47 | 31079 | S | 2 | B | 23 | 17 | 24 |

BLUE OX BASE PLATES

| | | | | | | | | | |
|---------------|---------|-------------------|------------|--------|------------------|----------------|-------------------|---------------|------------|
| In Section N: | Hitches | Hitch Accessories | Car Towing | Levels | Mirrors & Safety | Brake Controls | Towing Electrical | Brake & Wheel | Automotive |
|---------------|---------|-------------------|------------|--------|------------------|----------------|-------------------|---------------|------------|

| YEAR | MODEL | NOTES | PART# | TY | IR | WR | WT | H | W | |
|-----------------------------|--|-------------------|-------|----|----|----|----|--------|--------|--|
| FORD (... continued) | | | | | | | | | | |
| 08-09 | Taurus (incl. X) (not high output) | 1,2,3,4,13,47 | 31988 | R | 3 | 48 | 48 | 13 1/2 | 22 | |
| 10-12 | Taurus (incl. X & SHO; no adaptive cruise control) | 1,2,3,4,13,47 | 31941 | R | 3 | 48 | 48 | 13 1/2 | 26 | |
| 11-12 | Taurus (with adaptive cruise control) | 1,2,3,4,6,13,47 | 32010 | R | 3 | 48 | 63 | 13 | 16 1/2 | |
| 96-97 | Tracker (2 Door) | 2,3,7,42,47 | 31991 | S | 2 | | 26 | 14 | 24 | |
| GMC | | | | | | | | | | |
| 07-12 | Acadia (Not Denali) | 1,2,3,11,47 | 31080 | R | 3 | 48 | 44 | 17 | 18 | |
| 11-12 | Acadia Denali | 1,2,3,11,12,13,47 | 32007 | R | 3 | 48 | 50 | 17 1/4 | 19 | |
| 04-12 | Canyon | 1,3,5,9,11,45 | 31026 | S | 3 | B | 24 | 19 1/2 | 19 | |
| 02-09 | Envoy (All Models with metal bumper reinforcement) | 1,2,3,4,9,11,47 | 31018 | R | 3 | B | 46 | 14 1/2 | 18 | |
| 99-06 | Pickup 1500 (2WD/4WD) | 3,11,15,32,47,51 | 31308 | R | 2 | B | 31 | 17 | 30 1/4 | |
| 99NS-07 | Pickup 1500 Classic (2WD/4WD) | 3,11,15,32,47,51 | 31308 | R | 2 | B | 31 | 17 | 30 1/4 | |
| 07-13 | Pickup 1500 New Style | 3,4,9,11,47,51 | 31023 | R | 1 | 48 | 25 | 15 3/4 | 31 1/2 | |
| 04-06 | Pickup 2500 (2WD/4WD, Incl. Heavy Duty) | 3,9,11,47,51 | 31063 | R | 1 | B | 27 | 16 1/2 | 32 1/4 | |
| 03-07 | Pickup 2500 Classic (2WD/4WD, Incl. Heavy Duty) | 3,9,11,47,51 | 31063 | R | 1 | B | 27 | 16 1/2 | 32 1/4 | |
| 07-10 | Pickup 2500, 3500 New Style HD | 2,3,9,11,47,51 | 31935 | R | 1 | B | 28 | 16 | 32 | |
| 11-13 | NEW! Pickup 2500,3500 (2WD/4WD, Incl. Heavy Duty) | 1,3,9,12,13,4,7 | 31644 | R | 1 | B | 30 | 15 1/2 | 31 1/2 | |
| 10-13 | Terrain | 1,2,3,4,13,47 | 31738 | R | 3 | B | 58 | 15 1/2 | 24 | |
| 01-06 | Yukon 1500 Denali | 3,9,11,15,32,47 | 31308 | R | 2 | B | 31 | 17 | 30 1/4 | |
| 07-12 | Yukon 1500 (Include Denali) | 2,3,11,15,32,47 | 31057 | R | 2 | 48 | 23 | 17 1/4 | 31 1/4 | |
| 05-07 | Yukon 2500 | 3,9,11,47 | 31063 | R | 1 | B | 27 | 16 1/2 | 32 1/4 | |
| HONDA | | | | | | | | | | |
| 02-05 | Accord (Incl. LX, EX & DX) (no foglights) | T,1,3,6,13,15,47 | 31118 | R | 3 | B | 48 | 14 | 24 | |
| 11-12 | NEW! Accord | 1,3,4,12,13,47 | 31267 | R | 3 | 48 | 56 | 14 | 22 | |
| 06-11 | Civic (Incl. EX, LX & DX) | 1,2,3,4,6,9,13 | 31120 | R | 3 | 48 | 45 | 14 1/2 | 22 | |
| 97-99 | CR-V | T,15,30,47 | 31105 | S | 2 | B | 28 | 13 | 24 | |
| 02-04 | CR-V | T,1,2,3,13,15,47 | 31029 | R | 3 | B | 54 | 23 | 24 | |
| 05-06 | CR-V | 1,2,3,13,47 | 31058 | R | 3 | B | 37 | 21 | 24 | |
| 07-11 | CR-V | 1,2,3,13,47 | 31013 | R | 3 | B | 46 | 16 | 19 | |
| 12-13 | NEW! CR-V | 1,2,13,26,47 | 31305 | R | 2 | B | 40 | 15 1/2 | 24 | |
| 03-11 | Element (No SC Models) | 1,2,3,13,15,47 | 31029 | R | 3 | B | 54 | 23 | 24 | |
| 07-08 | Fit | 1,2,3,13,47 | 31750 | R | 3 | 48 | 45 | 12 3/4 | 24 | |
| 09-13 | Fit (With Foglights) & Fit Sport | 1,2,3,4,6,13,47 | 31715 | R | 3 | B | 48 | 13 1/2 | 24 | |
| 99-04 | Odyssey | T,1,2,3,12,15 | 31106 | S | 3 | B | 42 | 13 1/2 | 22 | |
| 05-07 | Back by popular demand! Odyssey (include Touring) | 1,3,6,13,47 | 31087 | R | 3 | B | 46 | 14 | 18 | |
| 08-10 | Odyssey | 1,3,6,13,47 | 31749 | R | 3 | B | 47 | 14 1/2 | 18 | |
| 03-05 | Pilot | T,1,3,6,13,15,47 | 31091 | R | 3 | B | 43 | 25 1/2 | 24 | |
| 09-12 | Pilot | 1,3,6,13,47 | 31749 | R | 3 | B | 53 | 17 1/4 | 18 | |
| HUMMER | | | | | | | | | | |
| 02-09 | H2 | 1,3,9,11 | 31065 | S | 1 | B | 21 | 22 1/2 | 32 1/4 | |
| 06-10 | H3 | 1,3,9,11 | 31045 | S | 3 | B | 14 | 21 | 29 1/2 | |
| HYUNDAI | | | | | | | | | | |
| 06-11 | Accent (no foglights) | 1,2,3,6,13 | 31939 | R | 3 | B | 37 | 13 1/2 | 24 | |
| 10-12 | Elentra Touring | 1,2,3,4,11,12,47 | 32016 | R | 3 | 48 | 48 | 15 | 20 | |
| 10 | Genesis Coupe | 1,2,4,12,13,47 | 32004 | R | 3 | B | 49 | 13 | 17 | |



Strong As An Ox™

BLUE OX BASE PLATES

**TOWING
& SAFETY**

N

| | | | | | | | | | |
|---------------|---------|-------------------|------------|--------|------------------|----------------|-------------------|---------------|------------|
| In Section N: | Hitches | Hitch Accessories | Car Towing | Levels | Mirrors & Safety | Brake Controls | Towing Electrical | Brake & Wheel | Automotive |
|---------------|---------|-------------------|------------|--------|------------------|----------------|-------------------|---------------|------------|

| YEAR | MODEL | NOTES | PART# | TY | IR | WR | WT | H | W |
|------|-------|-------|-------|----|----|----|----|---|---|
|------|-------|-------|-------|----|----|----|----|---|---|



Strong As An Ox™



| ISUZU | | | | | | | | | |
|----------------------|---|------------------|--------------|---|---|----|----|--------|--------|
| 03-06 | Ascender (Must have metal bumper) | 1,2,3,4,11,15,47 | 31018 | R | 4 | B | 46 | 14 1/2 | 18 |
| JEEP | | | | | | | | | |
| 84-96 | Cherokee | 1,2,3,7,42,45,47 | 31070 | S | 3 | B | 30 | 14 | 24 |
| 97-01 | Cherokee (Incl. Sport) | 1,3,4,7,45,47 | 31070 | S | 3 | B | 30 | 14 | 24 |
| 84-92 | Comanche Pickup (2WD/4WD) | 1,2,3,13,45,47 | 31070 | S | 3 | | 30 | 14 | 24 |
| 06-10 | Commander | 1,3,9,11,13 | 31046 | R | 3 | B | 27 | 17 3/4 | 24 |
| 99-03 | Grand Cherokee | 1,9,13,14 | 31028 | R | 3 | B | 39 | 17 | 20 |
| 04 | Grand Cherokee | 1,9,13,14 | 31062 | R | 2 | B | 31 | 18 3/4 | 20 |
| 05-10 | Grand Cherokee (No SRT-8) | 1,3,9,13,14,47 | 31019 | R | 3 | B | 38 | 18 3/4 | 24 |
| 11-13 | Grand Cherokee | 1,2,3,9,12,13,47 | 31973 | R | 3 | B | 35 | 17 1/2 | 34 3/4 |
| 02-04 | Liberty | 1,3,13 | 31025 | R | 2 | B | 34 | 19 | 20 |
| 05-07 | Liberty | 1,3,13 | 31014 | R | 3 | B | 37 | 19 | 20 |
| JEEP (... continued) | | | | | | | | | |
| 08-11 | Liberty (No Renegade) | 1,3,13 | 31095 | R | 3 | B | 37 | 17 1/2 | 20 |
| 11 | Liberty Renegade | 1,3,13,47 | 32070 | R | 3 | B | 38 | 17 1/2 | 24 |
| 12-13 | Liberty (Include Sport) | 1,3,13,47 | 32070 | R | 3 | B | 38 | 17 1/2 | 24 |
| 08-10 | Patriot | 1,3,4,13,47 | 31985 | R | 3 | B | 38 | 18 | 18 |
| 11-13 | NEW! Patriot | 1,2,3,4,12,13 | 31643 | R | 3 | B | 42 | 18 | 18 |
| 07-11 | Nitro | 1,3,13 | 31095 | R | 3 | B | 37 | 17 1/2 | 20 |
| 84-92 | Wagoner & LTD | 13,18,45,47 | 31070 | S | 3 | | 30 | 14 | 24 |
| 97-02 | Wrangler (Incl. Sport) | 3,47 | 31022 | S | 2 | B | 32 | 15 | 24 |
| 97-02 | Wrangler (Double Tube Bumper) | 3,47 | 31016 | S | 2 | B | 33 | 15 | 24 |
| 03-06 | Wrangler (Incl. Rubicon) | 3,47 | 31016 | S | 2 | B | 33 | 15 | 24 |
| 07-13 | Wrangler (Include Sport) | 1,3,5,13,47 | 31011 | R | 2 | B | 32 | 14 1/2 | 24 |
| 12 | NEW! Wrangler Unlimited Call of Duty | 26 | 31584 | S | 1 | B | 25 | 18 | 24 |
| KIA | | | | | | | | | |
| 10-11 | Forte | 1,2,3,4,13,47 | 32013 | R | 3 | B | 44 | 14 | 25 |
| 12 | Forte EX Only | 1,2,3,4,12,13,47 | 32013 | R | 3 | B | 44 | 14 | 25 |
| 10-11 | NEW! Optima (no foglight) | 1,2,3,4,12,13,47 | 31605 | R | 3 | B | 45 | 13 | 20 |
| 12 | NEW! Rio (hatchback only) | 1,2,3,13,26 | 31596 | R | 3 | B | 37 | 13 1/2 | 24 |
| 10-12 | Soul | 1,2,3,4,12,13,47 | 31942 | R | 3 | B | 46 | 15 1/2 | 26 |
| 11-12 | NEW! Sportage | 1,3,12,13,26 | 31348 | R | 3 | B | 34 | 16 1/2 | 23 |
| LEXUS | | | | | | | | | |
| 2008 | NEW! IS250 | 1,2,3,4,13,47 | 31606 | R | 3 | 48 | 52 | 13 3/4 | 24 |
| LINCOLN | | | | | | | | | |
| 09-12 | MKS | 1,2,3,4,6,13,47 | 31755 | R | 3 | 48 | 55 | 13 | 22 |
| 13 | NEW! MKS with active shutter system | 1,2,3,4,13,26 | 31572 | S | 3 | 48 | 50 | 14 1/2 | 20 |
| 10-12 | MKT (includes ECO Boost) | 1,2,3,4,6,13,47 | 31755 | R | 3 | 48 | 55 | 13 | 22 |

BLUE OX BASE PLATES

| | | | | | | | | | |
|---------------|---------|-------------------|------------|--------|------------------|----------------|-------------------|---------------|------------|
| In Section N: | Hitches | Hitch Accessories | Car Towing | Levels | Mirrors & Safety | Brake Controls | Towing Electrical | Brake & Wheel | Automotive |
|---------------|---------|-------------------|------------|--------|------------------|----------------|-------------------|---------------|------------|

| YEAR | MODEL | NOTES | PART# | TY | IR | WR | WT | H | W |
|--------------------------------|----------------------------|--------------------|--------------|----|----|----|----|--------|--------|
| LINCOLN (... continued) | | | | | | | | | |
| 07-10 | MKX | 1,2,3,4,6,13,47 | 31100 | R | 3 | B | 55 | 18 1/4 | 22 |
| 11-13 | MKX | 1,2,3,4,6,12,13,47 | 31990 | R | 3 | 48 | 46 | 18 1/4 | 22 |
| 11-12 | MKZ (Includes Hybrid) | 1,2,3,4,6,13,47 | 31940 | R | 3 | B | 53 | 14 3/4 | 19 1/2 |
| 11-12 | Navigator | 3,9,12,13,47 | 32005 | R | 2 | B | 30 | 20 | 34 |
| MAZDA | | | | | | | | | |
| 10-12 | Mazda 5 | 1,2,3,4,13,47 | 32073 | R | 3 | B | 39 | 14 1/2 | 24 |
| 00-05 | B2300 (2WD/4WD) | 1,3,4,15,47 | 31072 | S | 3 | B | 39 | 17 | 24 |
| 00-03 | B2500 (2WD/4WD) | 1,3,4,15,47 | 31072 | S | 3 | B | 39 | 17 | 24 |
| 00-05 | B3000 (2WD/4WD) | 1,3,4,15,47 | 31072 | S | 3 | B | 39 | 17 | 24 |
| 01-03 | B3000 Dual Sport (2WD/4WD) | 1,2,3,15,47 | 31079 | S | 2 | B | 23 | 17 | 24 |
| 98-03 | B4000 (2WD/4WD) | 1,3,4,15,47 | 31072 | S | 3 | B | 39 | 17 | 24 |
| MERCEDES | | | | | | | | | |
| 08-13 | Smart Car | 1,2,3,4,13,47 | 31537 | R | 4 | 48 | 41 | 12.5 | 17 |



| | | | | | | | | | |
|-------------------|--|--------------------|--------------|---|---|---|----|--------|--------|
| MERCURY | | | | | | | | | |
| 08 | Mariner Hybrid (Automatic Transmission Only) | 1,2,13,47 | 31092 | R | 2 | B | 47 | 18 1/2 | 18 |
| 09-12 | Mariner (Include Hybrid) | 1,2,12,13,47,49 | 31714 | R | 2 | B | 42 | 17 | 22 |
| MITSUBISHI | | | | | | | | | |
| 10-11 | Lancer ES/ES Sport | 1,2,3,12,47 | 32072 | R | 3 | B | 42 | 12 | 22 |
| NISSAN | | | | | | | | | |
| 07-12 | Altima | 1,2,3,4,13,47 | 32014 | R | 3 | B | 30 | 13 1/4 | 33 1/2 |
| 05-11 | Frontier | 1,2,3,9,11 | 31209 | R | 3 | B | 30 | 13 1/4 | 33 1/2 |
| 11-12 | Juke (No Foglights) | 1,2,3,4,12,13,47 | 32006 | R | 3 | B | 63 | 16 1/2 | 19 |
| 10-12 | Versa | 1,2,3,4,13,46,47 | 32015 | R | 3 | B | 41 | 14 | 26 |
| 08-12 | Pathfinder | 1,2,3,9,11,47 | 31209 | R | 3 | B | 30 | 12 1/2 | 33 1/2 |
| OLDSMOBILE | | | | | | | | | |
| 99-03 | Alero | T,1,2,3,4,13,15,47 | 31075 | R | 3 | B | 49 | 13 1/2 | 24 |
| 02-04 | Bravada (Must Have Metal Bumper) | 1,2,3,4,9,11,15,47 | 31018 | R | 4 | B | 46 | 14 1/2 | 18 |
| 98-03 | Cutlass (Not Supreme) | T,1,2,3,4,13,15,47 | 31075 | R | 3 | B | 49 | 13 | 24 |
| PONTIAC | | | | | | | | | |
| 07-08 | G5 | 1,2,3,4,13 | 31041 | R | 3 | B | 31 | 14 1/4 | 20 |
| 05-090S | G6 | 1,3,5,13,47 | 31071 | R | 3 | B | 39 | 13 | 23 |
| 99-02 | Grand Am (Incl. GT) | T,1,2,3,4,13,15,47 | 31075 | R | 3 | B | 49 | 13 1/2 | 24 |
| 05-06 | Pursuit | 1,2,3,4,13 | 31041 | R | 3 | B | 31 | 14 1/4 | 20 |
| 09-10 | Vibe | 1,2,3,13,47 | 31993 | R | 2 | B | 41 | 14 | 18 1/4 |
| SATURN | | | | | | | | | |
| 07-09 | Aura (Include XR) | T,1,2,3,13,15,47 | 31030 | R | 3 | B | 40 | 13 1/4 | 20 |
| 05-07 | Ion (No Red Line) | T,1,2,3,4,13,15,47 | 31020 | R | 3 | B | 36 | 13 | 24 |

BLUE OX BASE PLATES

**TOWING
& SAFETY**

N

| | | | | | | | | | |
|---------------|---------|-------------------|------------|--------|------------------|----------------|-------------------|---------------|------------|
| In Section N: | Hitches | Hitch Accessories | Car Towing | Levels | Mirrors & Safety | Brake Controls | Towing Electrical | Brake & Wheel | Automotive |
|---------------|---------|-------------------|------------|--------|------------------|----------------|-------------------|---------------|------------|

| YEAR | MODEL | NOTES | PART# | TY | IR | WR | WT | H | W |
|-------------------------------|---|------------------------|--------------|----|----|----|----|--------|--------|
| SATURN (... continued) | | | | | | | | | |
| 00-02 | L Series | T,1,2,3,4,5,6,13,15,47 | 31081 | R | 3 | B | 48 | 13 1/2 | 24 |
| 95-02 | SC1 | T,1,3,4,5,6,13,15,47 | 31044 | R | 2 | 48 | 43 | 13 | 24 |
| 97-02 | SC2 | T,1,3,4,5,6,8,13,15,47 | 31044 | R | 2 | B | 43 | 13 | 24 |
| 96-02 | SL | T,1,3,4,5,6,13,15,47 | 31044 | R | 2 | 48 | 43 | 13 | 24 |
| 96-02 | SL1 | T,1,3,4,5,6,13,15,47 | 31044 | R | 2 | 48 | 43 | 13 | 24 |
| 93-02 | SL2 | T,1,3,4,5,6,13,15,47 | 31044 | R | 2 | 48 | 43 | 13 | 24 |
| 96-99 | SW1 | T,1,3,4,5,6,13,15,47 | 31044 | R | 2 | B | 43 | 13 | 24 |
| 93-01 | SW2 | T,1,3,4,5,6,13,15,47 | 31044 | R | 2 | 48 | 43 | 13 | 24 |
| 02-03 | VUE (4 Cylinder Manual Only) | T,3,6,13,15,47 | 31061 | R | 3 | B | 55 | 15 | 18 |
| 04-06 OS | VUE (excludes VTI) | T,1,3,6,13,15,47 | 31061 | R | 3 | B | 55 | 15 | 18 |
| 06 NS-07 | VUE (Includes Hybrid, Greenline Hybrid, excludes VTI) | 1,3,12,13,47 | 31981 | R | 3 | B | 55 | 15 | 18 |
| 06 NS-07 | VUE (Includes Hybrid, Greenline Hybrid, excludes VTI) | 1,3,13 | 31012 | R | 3 | B | 55 | 15 | 18 |
| 08-10 | Vue (All Models) | 1,2,3,4,13,47 | 31309 | R | 4 | B | 39 | 21 1/2 | 18 1/2 |
| SUBARU | | | | | | | | | |
| 09-12 | Forester | 1,2,3,4,13,47 | 31983 | R | 3 | 48 | 34 | 17 1/2 | 18 |
| 08-12 | Impreza (Includes WRX) | 1,2,3,4,13,47 | 31758 | R | 3 | B | 32 | 14 | 18 |
| 10-13 | Back by popular demand! Outback | 1,2,3,4,6,13,47 | 31759 | R | 3 | B | 55 | 17 | 24 |
| SUZUKI | | | | | | | | | |
| 01-03 | Grand Vitara (2WD/4WD, Incl. XL7) | 1,3,6,13,15,46,47 | 31124 | R | 3 | B | 41 | 17 | 20 |
| 06-08 | Grand Vitara | 1,2,3,13 | 31042 | R | 3 | B | 40 | 21 1/2 | 24 |
| 09-12 | Grand Vitara | 1,2,3,4,6,13,47 | 31992 | R | 3 | B | 41 | 21 1/2 | 24 |
| 11-12 | Kizashi Sport GTS | 1,2,3,12,13,26 | 32076 | R | 3 | 48 | 34 | 14 | 18 |
| 07-12 | SX4 | 1,3,4,6,13,47 | 32074 | R | 3 | B | 44 | 16 | 20 1/2 |
| TOYOTA | | | | | | | | | |
| 11-13 | 4-Runner SR5 | 1,2,3,4,5,12,13 | 32077 | R | 3 | 48 | 47 | 24 1/2 | 21 |
| 09-13 | Corolla | 1,2,3,4,12,47 | 31994 | R | 3 | 48 | 29 | 15 | 18 1/4 |
| 07-12 | FJ Cruiser | 1,2,3,4,13 | 32008 | R | 3 | B | 47 | 24 3/4 | 21 |
| 08-10 | Matrix | 1,2,3,13,47 | 31993 | R | 2 | B | 41 | 14 | 18 1/4 |
| 06-13 | RAV 4 | 1,2,3,4,13 | 32012 | R | 3 | 48 | 43 | 24 | 22 |
| 08-12 | Scion XD | 1,2,3,4,13,47 | 31760 | R | 4 | B | 56 | 14 | 24 |
| 05-13 | Tacoma (All Models) | 3,13 | 31085 | R | 2 | B | 37 | 11 1/2 | 30 1/2 |
| 05-08 | Tacoma Prerunner (2WD/4WD) | 3,13 | 31085 | R | 2 | B | 37 | 11 1/2 | 30 1/2 |
| 07-13 | Tundra 2WD/4WD, Regular/Double/CrewMax Cabs | 3,9,11,15,47,51 | 31943 | R | 2 | B | 32 | 12 3/4 | 32 1/2 |
| 07-12 | Yaris Liftback & SE Hatchback | 1,2,3,4,6,13 | 31761 | R | 3 | B | 50 | 13 | 24 |
| VOLKSWAGEN | | | | | | | | | |
| 98-05 | Beetle (Incl. TDI & Gas Turbo) | 1,2,3,6,13,47 | 31121 | R | 5 | B | 47 | 12 | 24 |
| 09-12 | CC Sport | 1,2,3,4,11,12,47 | 32078 | R | 3 | B | 47 | 11 1/2 | 20 |
| 87-91 | NEW! Fox | 47 | 33448 | S | 2 | | 36 | 12 1/2 | 24 |
| 85-91 | NEW! Golf | 29,47 | 31600 | S | 4 | | 42 | 13 | 24 |
| 99-05 | NEW! Golf (TDI and Gas) | 1,2,3,13,47 | 31599 | R | 4 | B | 29 | 13 | 20 |
| 85-90 | NEW! Jetta | 29,47 | 31600 | S | 4 | | 42 | 13 | 24 |
| 1991 | NEW! Jetta | 4,47 | 31598 | S | 2 | | 32 | 13 | 24 |
| 05-10 | New Jetta | 1,2,3,4,11,47 | 31762 | R | 3 | B | 30 | 13 1/2 | 20 |
| 97 | NEW! Passat TDI | 1,2,3,47 | 31604 | S | 3 | B | 44 | 13 1/2 | 24 |
| 98-01 | NEW! Passat | 1,47 | 31603 | S | 3 | 48 | 37 | 13 1/2 | 24 |
| 01.5-05 | NEW! Passat | 1,2,12 | 31602 | S | 2 | B | 34 | 13 1/4 | 20 |
| 12 | NEW! Passat | 1,2,3,4,13,26 | 31597 | R | 2 | B | 40 | 14 1/2 | 24 |
| TOWBARS | | | | | | | | | |
| Class III | Acclaim (Self-Aligning Car Mnt) | | 30910 | | | | 47 | | |
| Class III | Adventurer (Collapsible A-Frame) | | 30912 | | | | 36 | | |
| Class III | Aladdin (Self-Aligning M.H. Mnt) | | 30909 | | | | 27 | | |
| Class IV | Aventa LX (Self Aligning M.H. Mnt) | | 30913 | | | | 42 | | |
| Class III | Ambassador (Rigid) | | 30911 | | | | 23 | | |

BASEPLATE MODEL NOTES

BLUE OX®

- Bumper fascia must be removed and replaced during installation.
- Requires some trimming of bumper (fascia, plastic, and/or grill).
- Requires some drilling (not major).
- Requires some trimming of the air dam.
- Requires some trimming of the belly pan.
- Headlights must be removed and replaced during installation.
- Steel belly pan must be removed and remain off the vehicle after installation.
- Fog lights must be removed and remain off the vehicle after installation.
- Tow hooks must be removed and remain off the vehicle after installation.
- The vehicle must have factory tow hooks to mount the bracket to.
- The weight of this vehicle is near the Class III, 5000 lb, rating limitations. Some models, depending on options, may well exceed this 5000 lb rating. Be sure to confirm the weight of your individual vehicle before towing. As of 1999 the Aventa II is now rated at 10000 lbs and either the Aventa II or Alexis tow bar must be used for these applications. Tow bar adapters are not to be used with vehicles weighing over 5000 lbs.
- Baseplate has non-24" spaced attachment tabs. Requires either a motor-home mounted tow bar or an adapter to utilize a car mounted tow bar. The BX88153 adapter can not be used on non 24" baseplates. See "Accessories" on back page. Tow bar adapters are not to be used with vehicles weighing over 5000 lbs.
- Use only with motorhome mount tow bars or the BX8833 or BX88151 adapters. Removable tabs with only one hole will not attach to car mount tow bars or other adapters. The Acclaim may only be used with removable tab baseplates that have 22" or greater spaced tabs. The Adventurer may be used with baseplates having 24"-40" spaced removable tabs. The Ambassador may only be used with 24" spaced removable tabs.
- Due to a tail light bulb out indicator in the wiring system, Jeep Grand Cherokee's must be wired with a BX8869 wiring kit. The BX8811 wiring kit can not be used.
- Specific dinghy towing restrictions apply. They may include specific towing speeds and distances, and/or lubricating the transmission and transfer case with the engine idling, then running selector through the gears. Other restrictions may also apply. Confirm the towability and pre-towing procedures of your vehicle with the owner's manual or contact the vehicle's manufacturer for specific towing procedures.
- a. Front bumperettes interfere with tow bar & must be removed. b. A few late '84 models are in fact '85's. The 82-84 front bumper mounting bracket is bolted to the bumper and the chassis. The 85 is bolted to the bumper & welded to the chassis.
- Sold as a complete unit only. Boxed it is Federal Express shippable.
- Downsized models only. Off Road package requires cutting some metal.
- The optional brush guards interfere with mounting the baseplate. Part # BX3502 center section for the Samurai is compatible.
- 8820 hold-up kit is intended to convert an old style flip-up to a new style. Some welding is required.
- Soft bottom edge of bumper must be compressed rearward about 1 1/2".
- Will not mount on models with Soft Color Key bumper.
- The 93-95 Sable requires cutting in the lower bumper. This is not true for the Taurus application.
- This baseplate will fit the 1991 Camry, however, lower metal bumper/spoiler must be removed while baseplate is on the car.
- Horizontal opening in bumper must be widened approximately 3/4" to allow tow bar attachment tabs to protrude.
- One piece standard design.
- Two piece standard design.
- 2 1/2" MPH Bumper only. Does not fit Shelby EX.
- Includes GTI. Will not fit sport spoiler or Wolfsburg package.
- Baseplate will work with the steel skid plate installed.
- 2001 Dodge Dakota's - some of the accessories stay on when the key is left in the towing position causing battery drain.
- Early 99's were produced with the same body style as the 98's, then later models have the new styling. The new style chassis has amber rear turn signals instead of red.
- The 2002 Corolla measures 33 1/2" inches between the front frame ends. The 2002 1/2 Corolla is wider at 35 1/4" between the front frame ends.
- Running lights must be removed.
- Chevy and GMC full size vehicles may require removing the tow hooks and brush guards.
- Some welding is required.
- License plate bracket may need to be relocated.
- Air dam must be removed and remain off the vehicle after installation.
- 2 1/2 MPH Bumper Only. Does not fit Shelby CEX.
- Can not be used on vehicles with air conditioning.
- Can not be used with adapters.
- Vehicle may accumulate miles when flat towing. Consult your vehicle's owner's manual.
- The BX1948 will only work on 2003-05 Dodge Ram 1500 models with a vertical distance of 2 inches between the inside holes of the tow hook brackets. The BX1957 baseplate is designed for the 3-bolt, each side, solid-bar tow hooks with a vertical distance of 1 1/2 inches between the inside holes of the tow hook brackets.

- Will not fit the Harley Davidson Special Edition or STX edition trim packages for 2003-05 models.
- Due to the design of the baseplate, a second 5/16" hole can not be drilled to accommodate the RangeFinder II towbar.
- Due to the design of the baseplate, the Adventurer towbar can not be used with the baseplate.
- The BX88152 adapter can not be used with this baseplate.
- Blue Ox 1/2" receiver locks can not be used with this baseplate.
- Measure the distance between the frame rails. If the distance is appx. 34 3/8" the BX1973 baseplate is needed. If the distance is appx. 31" the BX1973 is the correct application.
- Height deviation up to 14" higher on the towing vehicle allowed when used for utility applications only with an Allure towbar.

TERMINOLOGY

- WT.** Weights include boxing, subtract 1-2 lbs. for installation weight. Weights may vary 2 lbs. due to packaging variations.
- IR.** (Installation Rating) is a rough measure of the time required for base-plate or bracket installation by a trained installer. These numbers can be used as rough suggested installation time in hours by a trained installer. The first installation of a particular baseplate, and installation by untrained individuals will likely increase installation time substantially.
- WR.** The B signifies that the vehicle uses the BX8869 wiring kit as standard but the LED kits (BX88267 & BX88269) can be used as upgrades. The 48 is for the BX8848 wiring kit.
- T.** A T in the model notes, indicates vehicles that to the knowledge of Blue Ox may be towed without the addition of a drive shaft disconnect or lube pump. Honda's have a special procedure for towing (See Blue Ox Service Bulletins SB218 & SB219) and GM vehicles with the 4T40E or 4T45E automatic transmissions must have a fuse pulled for towing. For all other vehicles, please contact Remco Mfg. at 1-800-228-2481. **In all instances, consult your vehicle's owner's manual before towing!**
- TY.** R indicates Blue Ox baseplates that have removable attachment tabs. S indicates Blue Ox baseplates with standard attachment tabs. D indicates Dun-can bracket kits.
- H.** Indicates the height of the attachment tabs from the ground.
- W.** Indicates the distance from center to center of the attachment tabs.

1- TOWING INFORMATION1. VEHICLES FOR WHICH WE DO NOT DESIGN BASEPLATES:

We are occasionally asked why we don't make a custom baseplate for a particular car. Sometimes it is because we have not had an opportunity to do that particular model. Other times it is because the model in question is not sold in a sufficiently high quantity to justify the investment in design, testing and tooling necessary to produce a unit. Contact Blue Ox for all models 2001 and newer.

2. OVERWEIGHT VEHICLES:

Some vehicles may exceed the 5000 lb. weight limitation on most tow bars. The Aventa II or Aventa LX with a 10000 lb rating must be used for all towing applications in which the towed vehicle's weight exceeds 5000 lbs.

3. TOWING AUTOMATICS:

Based on reliable information, all Honda, most Saturn, '95-'05 Chevy Cavalier (4T40E or 4T45E trans.), '95-'05 Pontiac Sunfire (4T40E or 4T45E trans.), '97-'05 Chevy Malibu, '97-'05 Honda CR-V (See Blue Ox Service Bulletin SB219), '97-'01 Olds Cutlass and '99-05 Pontiac Grand Am cars can be towed with all four wheels on the ground without damaging the engine or transmission. This is an official Saturn, General Motors, GM vehicles must have the 4T40E or 4T45E transmissions to be towable! (See GM Service Bulletin 53-01-05 at your GM Dealer) and Honda position (See Blue Ox Service bulletin SB218.) Another solution to towing an automatic is to pick a 4 wheel drive vehicle such as the Chevrolet S-10 Blazer or Jeep Cherokee and put the transfer case in neutral. Other automatics will require a drive shaft disconnect or a transmission pump.

4. POWER STEERING:

We are not aware of any problems with power steering. In most cases it helps, as it acts as a damper. We have encountered vehicle's without power steering that are not towable due to oscillation of the steering wheel while towing.

****To use a RangeFinder II towbar in conjunction with standard tab baseplates an additional 5/16" hole must be drilled in the attachment tabs. Please refer to notes 11 and 45 for baseplates which can not be drilled to accommodate the RangeFinder II.****