



HOPKINS NEVER-FADE LEVELS

No fading EVER! Provides years of trouble-free use. Bubble vial is easily seen from a distance). Keeps traditional shape (no fade marks on RV).

Never-Fade Level:

- 48980** Graduated RV Levels, PK2, eliminates guesswork: markings indicate inches needed to achieve plumb and level #08526
- 48983** Stick-On Levels, PK2 #03926
- 48986** Surface Level, levels horizontal, vertical and surface #09516
- 48987** Reflective Levels, PK2, easily achieve plumb and level #09916
- 48989** RearView Level, mounts on front of trailer #04026



DAMPRID MOISTURE ABSORBER PRODUCTS



- Prevents Mold & Mildew Stains.
- Protects from Moisture Damage.

HANGING MOISTURE ABSORBER - WITH ACTIVATED CHARCOAL

DampRid® Hanging Moisture Absorber with Activated Charcoal not only prevents mold and mildew stains and musty odors by eliminating excess moisture, but also absorbs and removes odors from the toughest sources such as cooking, garbage, bathrooms and diaper pails, creating fresher, cleaner, odor-free indoor air. It can be used in any room, closet, storage area or locker. 6" W x 1.38" D x 9.25" H. Patented.

- 48713** Hanging Moisture Absorber, 14-oz. Charcoal Activated (Not for sale in Canada) #FG80CR

HANGING MOISTURE ABSORBER

- Eliminates Musty Odors caused by Excess Moisture. • Prevents Mold & Mildew Stains.

DampRid® Hanging Moisture Absorbers eliminate excess moisture that can cause musty odors, damp-feeling fabrics and damage clothes and leather goods. Now, available in 3 fragrance varieties, Fresh Scent (by special order), Lavender Vanilla and Citrus Fresh, they also leave a light, pleasurable scent. All DampRid Hanging Moisture Absorbers can be used in closets, bathrooms, laundry rooms, pantries, storage and anywhere excess moisture and stagnant air are a nuisance. 6" W x 1.38" D x 9.25" H Patented.

Hanging Moisture Absorber, 14-oz.:

- 48711** Lavender Vanilla (Not for sale in Canada) #FG80LV
- 48712** Citrus Fresh (Not for sale in Canada) #FG80CF

COFAIR PRODUCTS INC.

QUICK ROOF SEAM PRIME

- Surface Conditioner & Adhesive Enhancer. • Can be used on: Butyl Rubber, Modified Asphalt, Steel-Loc™ and MicroSealant® adhesives. • Quick Roof Seam-Prime allows the installer to maximize adhesion at colder temperature.

- 48899** UltraBond Seam Prime, 14-oz. #SP14

QUICK ROOF ULTRACLEAN

- Quick Roof UltraClean 14 oz. removes: Oxidation, Grease, Oil, Tree Sap and other contaminants. • Can be used on: TPO, EPDM, Hypalon, PVC, Metal Fiberglass, Modified Asphalt and most other roofing and construction surfaces. • UltraClean is non-chlorinated fast drying cleaner that will not leave a residue.

- 48900** UltraClean Roof Cleaner, 14-oz. #UC14



VERSACHEM DIELECTRIC CONNECTOR GREASE

High performance 100% silicone dielectric compound that enables boots to be removed from spark plugs and distributor caps after long exposure to today's high energy ignition systems and hot engine temps. Waterproof and corrosion resistant. Use on all electrical connections. Resists arcing and voltage leaking. • Made in USA.

- 48826** Dielectric Connector Grease, 0.35 oz. syringe carded (10g) #002-15310



HOT NEW PRODUCTS



50076

NEW!

50076
with cover

BLUE SEA SYSTEMS BATTERYLINK™ 120A 12/24V ACR



Specifications	
Continuous Rating	120A
Intermittent Rating (5 min.)	210A
Maximum Cable Size	1/0 AWG
Terminal Stud Size	3/8"-16 (M10)
Maximum Torque	140 in-lb
Weight	1.75 lb (0.79 kg)
Relay Contact Position	
Combine (30 sec.)	13.6V DC – 27.2V DC
Combine (2 min.)	13.0V DC – 26.0V DC
Open Low (30 sec.)	12.75V DC – 25.5V DC
Over Voltage Lockout	16.0V DC – 30.0V DC
Auxiliary Battery Priority Optional Feature	
Open Low (30 sec.)	12.25V DC – 24.5V DC
Regulatory	
CE Marked, ISO 8846	
Meets UL 1500, and SAE J1171 external ignition protection requirement	
IP67—Protected against immersion up to 1 meter for 30 minutes	

50076 BatteryLink™ 120A 12/24V ACR
#7611 5

AUTOMATICALLY COMBINES BATTERIES DURING CHARGING AND ISOLATES BATTERIES WHEN DISCHARGING

Auxiliary Battery Priority shares the alternator charge with the auxiliary battery longer when engine is running.

- Less voltage drop than battery isolators results in more fully charged batteries
- Dual sensing to manage multiple charge sources • 120A Continuous rating to support high output alternators • Robust, fully sealed assembly for reliability in environments with vibration and moisture • Clip-on cover insulates terminal connections • Easy to install
- Integrated LED light indicates ACR status
- Optional remote LED output for indication of ACR status.



SUNFORCE PRODUCTS INC. ACCESSORIES FOR SOLAR PANEL

UNIVERSAL SOLAR PANEL MOUNTING SYSTEM

Versatile Sunforce universal surface solar panel mounting kit is adaptable for use with solar panels up to 1 1/2in. thick. Promotes airflow all the way around the solar panel to reduce panel temperature and increase panel life.

- 4 corner pieces and 2 side pieces hold the solar panel snugMounts to any flat surface to help increase airflow around the panel. • Durable ABS plastic material with UV protection.
- Adaptable for use with solar panels up to 1-1/2" thick. • Secure to any flat surface with included adhesives or screwsIdeal for use with caravans, boats, motor homes and flat roofs.
- 7.75" H x 2.63" W x 7.75" L.

50281 Universal Solar Panel Mounting System (Includes: 4 corner pieces, 4 side pieces, and Screws) #50901 24

Pollak

NEW!



POLLAK CONTINUOUS DUTY SOLENOID

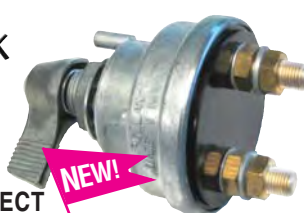


- General Usage Applications Up To 100 AMP Service, New and Replacement Applications. • Typical Applications Include: Snow Plows, Truck Winch, Lifts Trucks, RV, Tractor and Off Road.
- 12 Volt 100 AMP Continuous Service.
- Plastic Housing, UL Listed. • Includes Wiring Hardware.

19291 Starter Solenoid 100Amp
#52-327P 1

Pollak

POLLAK BATTERY MASTER DISCONNECT



NEW!

- Fits Most Truck, Automotive, Marine and RV Applications. • Pollak Master Disconnects are designed to protect against battery drain, electrical fires, tampering and theft. • Lever operated 6-36 VDC. • 180 AMPS Continuous Capacity. • 1000 AMPS In Rush. • S.P.S.T. (OFF-ON) Two Stud Terminals. • Includes .25 anti-indexing post.

19369 Master disconnect switch
#51-915P 1

POLLAK LOCKOUT LEVER KIT

- Used As Additional Tampering and Theft Protection For Pollak Lever Operated Master Disconnects. • Safe Effective Tamper Proof Method to Store Equipment. • Recommended to be used with a padlock 5/16 diameter shackle. • Includes Mounting Hardware.

19370 Lock out Kit #51-311P 5

NEW!



NEW!



8 IN 1 SOLAR PANEL HUB

- Used to combine the power output of multiple solar panels (8 panels max). • Solar panels/solar kits are combined in parallel connection to maintain system voltage. • Works with both Amorphous and Crystalline solar panels.
- Universal connectors are used in both the input and output ports for easy connection.
- Create your own DIY solar system-compatible with both 12 Volt and 24 Volt systems.
- Handles up to 30 amps /450 watts of solar power (for 12 Volt systems).
- 10.25" H x 1.88" W x 7"L.

50283 8 in 1 Solar Panel Hub (Includes: 8 input ports, 4 trailer plug to stripped wires)
#59058 12

SAMLEX AMERICA BATTERY ACCESSORIES



50143

3.25"H x 2.4"W x 1.5"L

BG-60 BATTERY GUARD, 60 AMPS

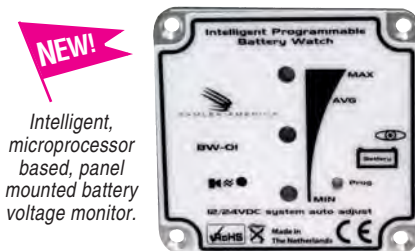
- Can be programmed to connect / disconnect at several different voltages. • Batteries last longer.
- Prevents damage to connected components.
- Protects against excessive voltage caused by faulty alternators or chargers. • Prevents excessive discharge of batteries.

50143 40A Battery Guard, RoHs compliant
#BG-60 6

BG-200 BATTERY GUARD, 200 AMPS

- Can be programmed to connect / disconnect at several different voltages. • Batteries last longer.
- Prevents damage to connected components.
- Protects against excessive voltage caused by faulty alternators or chargers. • Prevents excessive discharge of batteries.

50144 200A Battery Guard, RoHs compliant
#BG-200 8

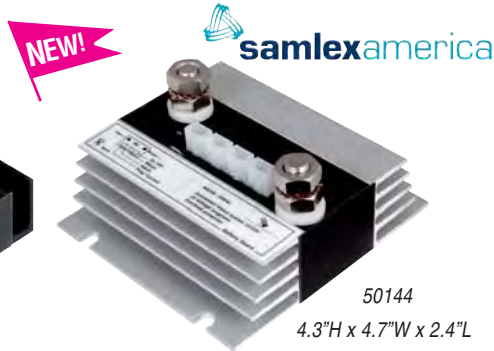


NEW!
Intelligent,
microprocessor
based, panel
mounted battery
voltage monitor.

BW-01 BATTERY MONITOR

Indicates following parameters and operational status with the help of Red, Green and Yellow LEDs and buzzer alarm: • Terminal voltage by specified combination of steady / blinking Green/Yellow/Red LEDs. • "Battery under charge status" by variable speed, cyclical sequential lighting of Green/Yellow/Red LEDs. • High voltage limit during charging by fast, cyclical sequential lighting of Green/Yellow/Red LEDs and buzzer alarm - limit can be programmed from 14.8 V to 16 V for 12 V battery and 29.6 to 32 V for 24 V battery. • Low voltage alarm limit by Red LED and buzzer - limit can be programmed from 10.5 to 11.2 v for 12 V battery and 21 V to 22.4 V for 24 V battery. • 3 day timer / automatic deactivation at 10.4 V for 12 V battery and 20.8 V for 24 V battery to prevent excessive drain.

50145 Battery Monitor, 12 or 24VDC, programmable; 2.5"H x 2.5" W 1"L
#BW-01 100



ACR-160 AUTOMATIC CHARGE ISOLATOR, 160 AMPS

NEW!

Automatic Charge Isolator ACR-160 (sometimes known as Battery Separator, Isolator, or Automatic Charging Relay) is a voltage dependant switch that uses a mechanical relay to separate or parallel starter and auxiliary battery banks in order to (1) protect the starter battery from deep discharge (2) recharge the two battery banks.

- Microprocessor controlled. • Dual sensing.
- Potted, waterproof, sealed unit. • Very low standby current. • Negligible voltage drop across the relay contacts. • Combines battery banks for charging and isolates them when charging has stopped. 1. Provides priority for charging only the starter battery first. 2. Protects from excessive discharging of the starter battery.
- Automatic detection of 12 or 24 VDC systems.
- 160 Amp continuous rated, 480 Amp (250 msec) peak. • Easy to install - does not require changing the existing circuit of the alternator.
- Ignition proof relay contacts. • Additional capabilities: Over voltage protection; Start Assist Function during cranking by momentarily paralleling the two battery for higher cranking Amps; Forced Disabling Function of the relay during charging to isolate the starter battery when high power DC loads are being powered from the auxiliary battery; and Monitoring of relay activation by external LED.

50146 Automatic Charge Isolator, 160 Amps
#ACR-160 1

Also see the complete line from
Samlex America starting on page 150



MARSHALL EXCELSIOR RV THERMO PIGTAILS (TYPE I ACME)

The RV Thermo Pigtail (Type I ACME) provides a safe, user-friendly connection from your Marshall Excelsior MEGR-9984 (Coast#57498, 57499) regulator to a standard LP gas cylinder without the use of a wrench. The easy to tighten nylon nut swivels on a connector fitting that is heat sensitive. Between 240°F and 300°F the brass nipple displaces (approximately 1/4") closing the cylinder valve module and stopping the flow of gas from the container. Inside the brass nipple is a flow-limiting device designed to sense excess gas flow. If excessive gas flow is detected, the RV Thermo Pigtail will shut down the flow to a maximum of 10 SCFH (by-pass flow). This product is required by RVIA (Recreational Vehicle Industry Association) as original equipment on your RV and should be maintained to the highest standards. Because of this required standard, when opening or refilling your LP gas cylinders, it could take as long as 20 minutes to re-pressurize your LP gas system for normal appliance(s) operation.

NOTE: MEC Green Type I Nut for use on RV application ONLY (200,000 BTU/H).

1/4" ID HP Hose, Type 1 Back Check Connector (Green), Packaged:

50105 1/4" Inv FI X 15"
#MER425-15P 10

50106 1/4" Inv FI X 18"
#MER425-18P 10



50108 1/4" MPT X 15"
#MER426-15P 10

50109 1/4" MPT X 20"
#MER426-20P 10

HOT NEW PRODUCTS



MARSHALL EXCELSIOR ADAPTER TEES

The ME412P camping appliance tee allows the RV owner the ability to connect either one or two high pressure LP gas appliances from a single LP gas cylinder source. The Marshall Excelsior ME412P features two male 1" -20 high pressure propane connection ports for powering portable camping appliances such as: camp stoves, lanterns, table top grills, portable heaters, and other small LP appliances.

50111 Tee Adpt, QCC1 x Male 1"20 x Male 1"20, Packaged #ME412P 25



NEW!



NEW!

The ME422P camping appliance fitting allows towable RV or cottage owners the ability to connect two high pressure LP gas appliances to a single LP gas cylinder source. The ME422P has a 1" -20 male high pressure propane appliance connection port and (1) combination

1-5/16" Type I, QCC Male ACME / CGA 510 (Female POL) connection port for powering camp stoves, lanterns and table top grills, portable heaters and other LP appliances directly from the fuel supply of the RV.

50114 Camping Elbow, QCC1 X Retro-Q X 1-20M X 1/4" INV. Flare, Packaged #ME422P 6



MARSHALL EXCELSIOR FULL FLOW POL ADAPTER

The ME318P POL Adapter is machined of solid brass. The 1/4" male pipe fitting fits the inlet of all standard low pressure regulators. The POL nut features a left hand thread and fits all standard LP gas cylinder valves.

Caution: When installing the 1/4" Male NPT into regulator inlet, it is recommended that Teflon tape be used instead of the thread sealant. If thread sealant is used, extreme caution should be taken that no thread sealant gets in the regulator inlet.

50120 FF POL x 1/4 MPT Ass'y, 7/8 Hex Nut, Packaged #ME318P 33



NEW!



NEW!

The ME413 has a soft nose P.O.L. inlet connection with hand-wheel which fits all standard LP gas cylinder valves. The outlets of the ME413 are both 1" -20 male fittings with valve o-ring seal and brass safety caps. This ME413 tee permits two appliances to be operated from a single fuel source.

50112 Tee, POL x 1" 20 Male x 1" 20 Male, Packaged #ME413P 6



NEW!

The ME425P Excess Flow Elbow is designed to be used with RV propane cylinders with the new Type I, QCC ACME connection. The elbow has a 1" -20 male high pressure LP gas connection port for powering portable camping appliances such as camp stoves, lanterns, table top grills, and other small LP appliances. Available individually, or in a kit. The ME425P elbow connects to MEC's camping appliance hoses MER421-60 and MER421-144 (Coast#57533, 57532; sold separately).

50116 M.QCC Type I x FPOL x Male 1"20 x 1/4 IF, Packaged #ME425P 25



NEW!

MARSHALL EXCELSIOR EXCESS FLOW POL ADAPTER

The ME1654P Soft-Nose POL Adapter is machined of solid brass (excluding the plastic handwheel). The 1/4" MNPT fits the inlet of all standard low pressure regulators. The hand-wheel nut is left hand thread and fits all standard LP gas cylinder valves. The ME1654P has a user friendly plastic handwheel that does not require a wrench. Caution: Do not use Soft-Nose POL's in any installation where extreme vibration is present. Replace O-ring at first sign of wear. Turn valve off when not in use. Check the handwheel to be sure it is tight in cylinder valve before lighting appliance. When installing POL into regulator inlet, it is recommended that Teflon tape be used instead of thread sealant. If thread sealant is used, extreme caution should be taken that no thread sealant gets in the regulator inlet.

50121 FF Soft Nose POLx1/4MPT, PI Hdwl (WF), Packaged #ME1654P 33

The ME418P ACME Tee fitting allows towable RV or cottage owners the ability to connect two high pressure LP gas appliances to a single LP gas cylinder source. The Marshall Excelsior ME418P has a 1" -20 male high pressure propane appliance connection port and (1) combination 1-5/16" Type I Male Acme (Female POL) connection port for powering camp stoves, lanterns and table top appliances directly from the fuel supply of the RV.

NEW!



50113 Camping Elbow, QCC1 X Retro-Q X 1-20M, Packaged #ME418P 6



MARSHALL EXCELSIOR LP CYLINDER POL ADAPTER

The Marshall Excelsior ME475P Cylinder Adapter adapts your LP grill, portable stove or any other high pressure gas appliance to a full size LP cylinder instead of the small disposable style.

50119 Adapter SN POL x 1"-20 M W/Plstc Hndwhl, Packaged #ME475P 25



NEW!

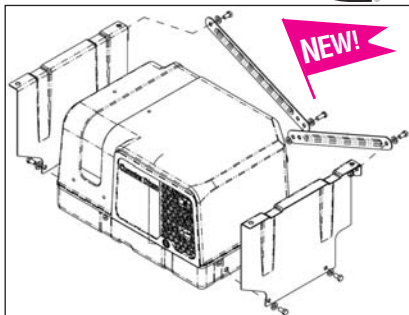


MARSHALL EXCELSIOR LAST CHANCE ADAPTER

The ME480P Last Chance Adapter allows you to connect a small disposable cylinder to your grill or other gas appliance when your larger tank unexpectedly runs out of propane. A wonderful convenience to ensure that you will have additional cooking time to finish your meal. Depending on the size of your grill, you will be able to extend your cooking time by approximately 1+hrs. Caution: The disposable cylinder must always be within 45 degrees of the upright (vertical) position when connected to the grill connection. Keep disposable cylinder and grill connection away from open flames, or hot surfaces. Failure to do so can result in explosion, fire hazard or personal injury.

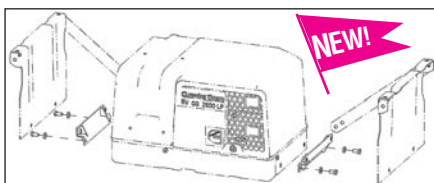
50122 Last Chance Adpt M.QCCxF.POL x 1"-20F Full Flow, Packaged
#ME480P 20

Cummins Onan



ONAN PARTS UNDERFLOOR MOUNTING KITS

62646 Underfloor Mounting Kit, Standard, For HGJBB Generators #A042W103 1



RETRO ADAPTER - KV to HGJBB

To be used to mount a HGJBB where a KV generator was installed with Cummins Onan mounting kit 403-2689.

62647 HGJBB to KV Adaptor Kit
#A043F935 1

MARSHALL EXCELSIOR TWO-STAGE REGULATORS

This Two-Stage regulator is a high pressure regulator combined with a second stage regulator. The MEGR-9950P reduces cylinder pressure to approximately 10 to 15 PSIG and then during the second stage completes the process by reducing inlet pressure down to 11" of water column (0.4 PSIG) outlet pressure. This innovative function results in a consistent inlet pressure to the second stage. This product is required by RVIA (Recreational Vehicle Industry Association) as original equipment on your RV and should be maintained to the highest industry standards.

Note: The MEGR-9950P and MEGR-9959P are an integral Two-Stage Regulators that meet all RVIA Requirements for use on Recreational Vehicles and complies with revised UL 144 (April 1999) and NFPA requirements.



50103 2 Stage Reg./ 6:00 vent, Packaged
#MEGR-9950P 5

Same as Coast#50103 but this innovative function results in a consistent inlet pressure to the second stage and downstream appliance.

50104 2 Stage Reg./ 9:00 vent, Packaged
#MEGR-9959P 5

ICON AIR CONDITIONER SHROUDS

Not all AC shrouds are created equal... These aftermarket replacement air conditioner shrouds are constructed of high-impact UV resistant material, thicker and stronger than the originals. Buy an Icon shroud and you'll have complete peace of mind, knowing that your shroud is designed to last. Backed by a Limited Life-time warranty, truly the last shroud you will ever buy! Shipped to your door... for less than you'd think!

Penguin Dometic Duo Therm Air Conditioner Shroud:

62203 Polar White #00752 1

62205 Black #01551 1

Brisk Air Dometic Duo Therm RV Air Conditioner Shroud:

62207 Old Style, White #01544 1

62208 New Style, White #01545 1



SUNLINK RV-LED PANCAKE LIGHTS by LASALLE BRISTOL

Sunlink LED lights use approximately 70% less electricity than standard RV lights and average 30,000 hour life. Each Sunlink RV-LED pancake light features: textured white plastic base, clear opal lenses, on/off switch, 300 LM per LED light, and a one year warranty.

12V DC-LED Dome light, Individually Boxed:

50300 Double, 12.2" x 6.6" x 2" #410RVLEDPC2008 20

50303 Single, 7.1" x 4.6" x 2" #410RVLEDPC1008 40



HOT NEW PRODUCTS



**POLARWARE
COMPANY
SINKS**

NEW!



May not be exactly as pictured

BUFFED STAINLESS STEEL DOUBLE BOWL SELF-RIMMING SINK

- Overall dimensions: 17" x 25".
- Bowl dimensions: 14" x 10" x 9-3/4".
- Drain size: 2". • Made in USA..

20619 Double Bowl, Without Ledge Back
#102-1-2 **1**

22 GAUGE STAINLESS STEEL SINGLE BOWL RECTANGULAR SINK



- Overall dimensions: 15-3/4" x 13" x 6" Deep. •
- Drain size: 2". • CSA Listed. • Made in USA.

20620 Buffed Stainless Steel Single Bowl,
Rectangular Sink #212560 **1**



May not be exactly as pictured

BUFFED BEAD STAINLESS STEEL SINGLE BOWL ROUND SINK

- Overall dimensions:
12-15/16" x 4-1/2"
- Deep. • Drain size: 2".

- Clip mounting, CSA Listed. • Made in USA.

20573 Buffed Stainless Steel Single Bowl,
Round Sink 22 Gauge #201250 **1**

20 GAUGE STAINLESS STEEL BAR/WAITRESS SINK



- Overall dimensions: 17"
x 13" x 6". • Drain size: 3-1/2". • Manufactured to
NSF and CSA Standards. • Made in USA.

20621 2-Hole Ledge Back Sink Only
#173-4-2 **1**



ICON WIND DEFLECTOR

**Engineered for
today's tow vehicles...**

The AeroShield's aerodynamic design reduces wind resistance and practically eliminates turbulent winds trapped between the tow

vehicle and the fifth wheel or trailer, ensuring smoother handling and improved performance. The Aeroshield can be adjusted to virtually any angle allowing maximum aerodynamic efficiency and easily folds down when not in use. Ships completely assembled (includes mounting hooks #2, #6, #8 & #9) ready for installation.

- Requires no drilling or modifications to the vehicle. • Up to 3mpg better fuel mileage.
- Improved stability and handling. • Eliminates bugs on the trailer. • Fits most vehicles (see application guide). <http://www.icondirect.com/aeroshield-wind-deflector/>

62209 AeroShield Wind Deflector 56" x 22", Black, for Full size tow vehicles #01217 **1**



ADAMS MANUFACTURING OUTDOOR LIVING FURNITURE

QUICK-FOLD TABLE

The Adams café-inspired Bistro Table is the ideal addition to compliment your outdoor décor. Perfect for the deck, patio, sunroom or backyard, the Bistro Table is proudly crafted in the USA out of high-quality molded resin for hassle-free maintenance and all-weather performance. The Bistro Table is easily foldable for out-of-the-way storage. Combine with Adams' RealComfort Bar Stools to create a sophisticated and stylish outdoor dining ensemble.

Quick-Fold Table, 29" L x 29.75" W x 40" H:

48911 Desert Clay #8560-23-3731 **4**

48912 Chestnut #8560-33-3731 **4**



NEW!

Sold separately



BAR STOOL

Perfect for the deck, patio, sunroom or backyard, the stackable RealComfort Bar Stool is 100% design engineered in the USA out of molded resin for hassle-free maintenance and all-weather performance. From its patented ergonomic seating design to its sleek contoured styling, the RealComfort Barstool will beautifully and comfortably compliment any outdoor décor. Meets ASTM standards for residential and non-residential use. Pair with the café-inspired Adams Bistro Table for the ultimate "go-anywhere" outdoor dining set.

Bar Stool, 31.5" x 19.375" x 19.375":

48908 Desert Clay #8350-23-3700 **24**

48910 Chestnut #8350-33-3700 **24**



HOT NEW PRODUCTS

NEW PRODUCTS

P



AP PRODUCTS RV ENTRANCE MOTOR HOME LOCK

48990 RV Entrance Motor Home Lock;
3.25"H x 6.5"W x 9.50"L
#013-257 1



KWIK TEK AIRHEAD® 12V AIR PUMP

This high-volume 12 volt portable air pump inflates and deflates towables, boats, pools, mattresses and beach toys quickly. Most pumps on the market don't put out this kind of air volume and pressure. The universal valve fittings fit many popular valves including Boston valves and stem valves. For added convenience, the cigarette lighter plug is equipped with a 10 ft. long power cord. Volume is 380 liters/minute. Maximum pressure: .71 psi. Draws 11.8 amps / 145 watts. We recommend "topping off" large towables inflated with this pump with a few strokes of AIRHEAD's Double Action Hand Pump or Foot Bellows Pump.

12604 Hi Output, Air Pump
#AHP-12H 6

OPTRONICS PREMIUM LIGHT KIT

Has all the components necessary to bring a trailer up to DOT lighting requirements for both under and over 80" applications. Full 3-year warranty. Specific DOT installation instructions. Trilingual packaging and instructions (English, French, Spanish). 1-800 Technical assistance hot-line number.

WATERPROOF LED TRAILER LIGHT KIT

2 LED stud-mount tail lights, red side marker/reflectors, license bracket, 25' wiring harness and hardware. Clam pack. Lifetime warranty.

12932 LED Sealed Trailer Light Kit
#TLL-9RK 2



13868

13869

SPORTSSTUFF TOW ROPES



2K ROPE – 2375-POUND BREAK STRENGTH!

This rope is perfect for towing all Sportsstuff 1 and 2- rider tubes. Features a rope caddy for easy storage. 60' length.

13868 2K Tow Rope 2375 lb.
#57-1522 12

4K ROPE – 4100-POUND BREAK STRENGTH!

This heavy-duty rope is perfect for towing any tube with 3 or more riders. Features a rope caddy for easy storage. 60' length.

13869 4K Tow Rope 4100 lb.
#57-1532 10



KWIK TEK WAKEBOARD ROPE*

AIRHEAD® HEAVY DUTY TOW HARNESS

This heavy duty tow harness is perfect for pulling skiers, wake boarders and up to 4 rider towables. Simply clip it onto your boat with the 5,000-pound tensile strength hooks, and attach your ski or tube rope to the heavy duty Kwik-Connect. A 6" float keeps the Kwik-Connect floating on top, away from your propeller. 12' long to fit larger boats and pontoons.

*A Rope Keeper is included for tangle-free storage.

12464 HD Tow Harness 12', Yellow/Red
#AHTH-2 6



THETFORD

THETFORD HOSE ADAPTERS

Fits in standard 4" trailer hose bumper for convenient storage while attached to 3" sewer hose.

27467 Bumper Hose Adapter
#02593 6

27465 Curved Hose Adapter, for 3" sewer hose to drainage system #01665 24

27468 Cap #01664 6

27504 Threaded Hose Adapter
#03696 1

For dishwasher disposal.

27466 Garden Hose Adapter #02283 6



THETFORD

THETFORD BASIC VALVES (MOLDED ABS)

Flat top for direct mount 3" spigot on bottom (#01457 seal and (4) #08737 mounting screws included).

27447 Basic Valve - Flat Top For Direct Mount
#08708 1

27445 Basic Valve - Flat Top
#08706 1

3" socket on top. 3" spigot on bottom.

27451 Basic Valve 3" x Spigot (with handle)
#08669 1



THETFORD CAP FOR PORTA POTTI

28692 Pour-Out Spout Cap for most Porta Potti (6) #07493 1



NEW!

80504

80504
Stowed



WINEGARD PORTABLE SATELLITE ANTENNA - CARRYOUT ANSER

In The Box

- Carryout Anser GM-5000 Hybrid Automatic Portable Satellite Antenna;
- Easy-Grip Handle; • 25' 12V Power Cable;
- 25' Coax Cable and • Printed Documentation.

Warranty & Support

- 2 Years Parts, 1 Year Labor Warranty;
- Complimentary Telephone and Email Support;
- Online Technical Manuals and Instructions.
- Made In The USA Designed, Built and Hand Tested in the U.S.A.

Technical Specifications

- Dimensions: 15" Stowed Height, 20.75" fully deployed height x 21" Diameter.
- Eyelet attached to base provides ability to lock-up antenna for added security
- Easy grip handle for effortless carrying • Supports 2 receivers (single satellite viewing)
- Stationary use only.

80504 Carryout Anser, Portable Satellite Antenna #GM-5000 1





CAMCO TRAILER-AID

Trailer-Aid is the fast, safe and easy way to change a trailer's flat tire. Made from lightweight super strong polymer, Trailer-Aid is easy to travel with and makes changing your trailer tire simple, even if you are alone.

48947 Trailer Aid, Boxed; 7.13"H x 6.13"W x 24.94"L #21 [6](#)

Trailer-Aid PLUS is designed specifically for recreational trailers and gives an additional 1" lift. The extra 1" lift makes Trailer-Aid PLUS handy when performing maintenance on brakes, wheels, and axles.

48948 Trailer Aid Plus, Boxed; 7.25"H x 6.06"W x 25"L #23 [6](#)





RV DESIGNER SLAM CAMS

BRD and RVD have teamed up on a simpler, innovative and great hatch-hardware design. Slam Cams are a patented locking solution which allows access doors to be closed without turning the cam lock. Fits standard cutouts and includes finger lift. Many new RVs using as original equipment. Less parts, better closure. Compatible with many other locks. This user friendly design eliminates the need for separate catches, latches and locks; saving time, money and precious shelf space.

Slam Cam:

48925 Locking, 5 Keycodes, Chrome
#L600 12

48926 Push Non-Lock, Chrome
#L601 12

48927 Locking, 1" Doors for Cargo Door
Locks #L610 12

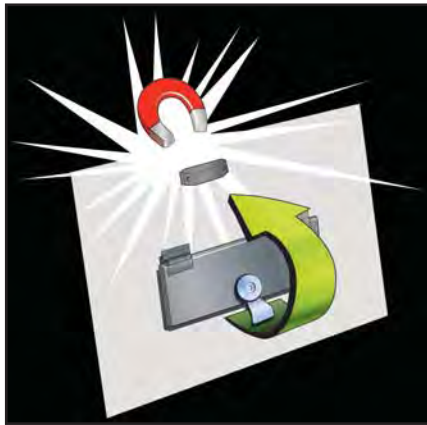
48928 Non-Locking, 1" Doors for Cargo
Door Locks #L611 12

Magnetic catch works with Slam Cams to allow for hands free open and close. Innovative design won't suffer from the same wear and tear as regular baggage door catches.

Magnetic Catch for Slam Cams:

48929 Black #L605 12

48930 White #L606 12



NEW!






MACH 8 RV ROOFTOP AIR CONDITIONERS

- **LOWEST PROFILE** in the industry, standing short at 8 inches tall. Lower profile means less drag, improved fuel efficiency.
- **TWO MOTORS** means the Mach 8 delivers the same high BTUs of cooling on both high and low speed operation.
- **HIGHEST AIR FLOW** delivery on high speed, and ultra quiet on low speed for night time cooling.
- Industry **EXCLUSIVE** molded one-piece fiberglass base pan provides excellent durability with reduced weight.
- Weighing in at 90 lbs., the Mach 8 is the **LIGHTEST** low profile unit made.
- Backward compatible with any Coleman Mach air conditioner, and installs easily from the roof for ducted top down mounted systems.
- Operates even at desert conditions of 125 degrees F.
- Has the **LARGEST** BTU resistance heater of any RV air conditioner.

MACH 8 Specifications	13,500 BTU Air Conditioner	13,500 BTU Heat Pump	15,000 BTU Air Conditioner	15,000 BTU Heat Pump
Cooling/Heating Capacity	13,500 BTU	13,500 BTU	15,000 BTU	15,000 BTU
Electric Heat Strip Capacity	6,000 BTU	6,000 BTU	6,000 BTU	6,000 BTU
Electrical Rating	115 VAC, 60 HZ, 1 Phase			
Cooling AMPs:				
Compressor	12.1	12.5	12.7	12.7
Indoor Motor High / Low	1.3 / 0.7	1.3 / 0.7	1.3 / 0.7	1.3 / 0.7
Outdoor Motor	1.9	1.9	1.9	1.9
Total @ High / Low Speed	15.3 / 14.7	15.7 / 15.1	15.9 / 15.3	15.9 / 15.3
Running Watts @ A.R.I. Standard	1599	1647	1483	1471
Running Watts @ Desert Condition	1913	1946	1811	1832
Running Watts-Electric Heat Strip	1748	1748	1748	1748
Compressor Locked Rotor Amps	63	63	63	63
Refrigerant Charge - R-410A	14.0 oz.	18.25 oz.	20.0 oz.	21.0 oz.
Evaporator Air Delivery (CFM)	300 - High Speed			
Weight	90 lbs.	93 lbs.	92 lbs.	94 lbs.
Dimensions, Exterior Shroud: 8.25" H x 28.40" W x 41.10" L; Interior Shroud: 2.2" D x 19.9" W x 20.1" L.				

MACH 8 COMPONENTS

Another Quality Coleman Mach air conditioner; **5,000,000** units and counting, all built in Wichita, KS.

Order #	Mfr. #	Description (H/P: Heat Pump; C/P: Condensor Pump)	
STEP 1: Choose one Upper Unit, required for all configurations			
62592	#47203-876	NEW! 13,500 Mach 8 White	
62595	#47206-879	NEW! 13,500 Mach 8 Black	
62596	#47204-876	NEW! 15,000 Mach 8 White	
62613	#47204-879	NEW! 15,000 Mach 8 Black	
62645	#47003-876	NEW! 13,500 Mach 8 H/P White	
62623	#47003-879	Coming Soon! 13,500 Mach 8 H/P Black	
62628	#47004-879	NEW! 15,000 Mach 8 H/P Black	
62614	#47223-879	NEW! 13,500 Mach 8 C/P Black	
62615	#47224-879	NEW! 15,000 Mach 8 C/P Black	
62642	#47023-879	Coming Soon! 13,500 Mach 8 H/P C/P Black	
62643	#47024-876	NEW! 15,000 Mach 8 H/P C/P White	
62644	#47024-879	NEW! 15,000 Mach 8 H/P C/P Black	
STEP 2: One Air Distribution Box (ADB) required for NON-DUCTED ceiling configurations only			
61365	#9330F715	NEW! Cool/Heat-Ready, Free Delivery Ceiling Assembly, White	
OR—STEP 2: for NON-DUCTED ceiling configuration with wall thermostat (plenum + thermostat + either control package required)			
61362	#9330F4552	NEW! Free Delivery Plenum for Wall Thermostat, White	
61357	#7330F3361	Thermostat, Analog, Cool-Only, 12 Volt Wall-Mount, White (Refer to page 348 for more details)	
60277	#7330G3351	Thermostat, Analog, Heat/Cool, 12 Volt Wall-Mount, White (Refer to page 348 for more details)	
65346	#8330-752	Cool-Only Control Package	
61359	#9330C755	NEW! Heat-Ready AC Control Kit	
OR—STEP 2: One Air Distribution Box (ADB) for LATERAL DUCTED configurations only			
63130	#8330A733	Cool-Only Ceiling Assembly, Lateral Ducted, without Thermostat, White	
61360	#8330D735	NEW! Heat Ready Ceiling Assembly, Lateral Ducted, without Thermostat, White	
61357	#7330F3361	Thermostat, Analog, Cool-Only, 12 Volt Wall-Mount, White (Refer to page 348 for more details)	
60277	#7330G3351	Thermostat, Analog, Heat/Cool, 12 Volt Wall-Mount, White (Refer to page 348 for more details)	
64444	#8330-763	MCD (Manual Control Ducted) ADB, Cool-Only, White (no thermostat required)	
61359	#9330C755	NEW! Heat-Ready AC Control Kit	
OR—STEP 2: One Air Distribution Box (ADB) for DUCTED PARK MODELS only			
63126	#8330A743	Cool Only ADB, 24-V, w/o Thermostat	
64680	#7330B3441	Thermostat, Standard 24-V	
STEP 3: Options for Mach 8 Air Conditioner			
62763	#9233A4551	Coming Soon! Electric Heat Kit for Mach 8 Heat-Ready Ceiling Assemblies	
60775	#8330B6301	Chillgrille Plenum, no control pkg.; ducts supply air towards front and rear of coach (See pg. 347)	
61388	#8330B633	Chillgrille Plenum, Cool Only, to duct supply air towards sides of coach (See page 347)	
60559	#8330A5221	Carrier A/C Control Conv Kit	
60560	#8330-5221	Carrier HP Control Conv Kit	