



DRIVING OUR WORLD FORWARD

2012 CHEVROLET
CAMARO



DRIVING OUR WORLD FORWARD



Go to getscanlife.com on your smartphone, download the free application then scan the code above for exclusive content.



facebook.com/chevroletcanada



twitter.com/chevroletcanada



youtube.com/chevroletcanada



MIX
Paper from
responsible sources
FSC® C021338

CHEVROLET.CA

190-12-B-006E



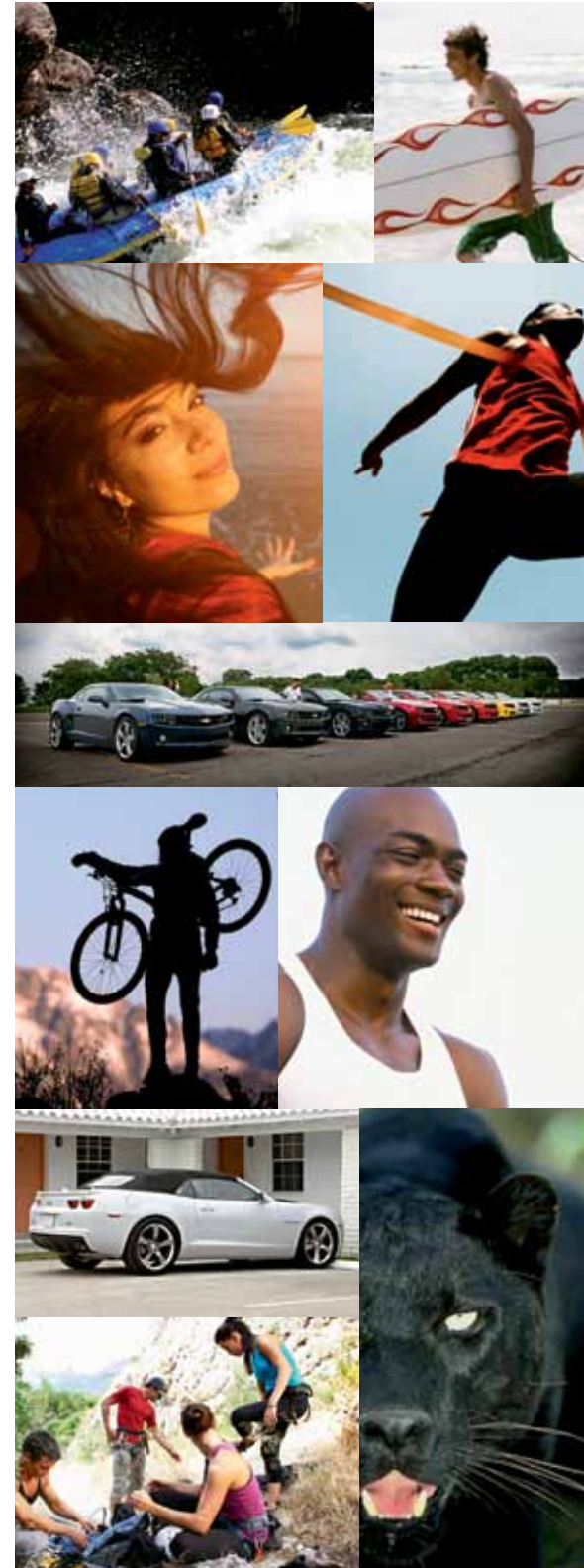
YOUR CHOICE: COVET IT OR OWN IT.



You can call it Camaro envy. It's those "I can't take my eyes off of it" looks that give it away. You can content yourself with admiring Camaro from a distance – or you can experience the real thing. Because truth be told, seeing Camaro isn't a substitute for actually driving it. Only when you strap yourself into the cockpit and unleash the substantial power and cutting-edge technology can you be fully initiated as a true Camaro aficionado. You need to

experience it. When you feel the g-forces generated by the blistering 4.7 second 0-60 mph (96 km/h) acceleration for the SS model,* the feeling of anticipation will be replaced by one of exhilaration. That is expressed in many different forms, thanks to Camaro's lineup of Coupe and Convertible models – with the tantalizing prospect of the introduction of the Camaro ZL1, with its heart-pounding 580 horsepower. Even more to covet.

*Based on GM testing.



chevrolet.ca



Camaro 2LT Coupe, shown in Black with available 45th Anniversary Edition Package and RS Package.



Camaro 2SS Coupe, shown in Inferno Orange Metallic with available equipment.



IT'S DR. JEKYLL. AND MR. HYDE.

Camaro is the embodiment of the 21st century sports car. It transcends the singular pursuit of power, and instead represents the latest in technologies to achieve what may previously have been viewed as conflicting goals. Take the battle between power and fuel efficiency that is so essential in today's car - even more true of a sports car. Camaro LS and LT pack a solid punch with their 323 horsepower 3.6L V6 engine - 18 hp more than the 2012 Ford Mustang V6 models.* But as a result of such sophisticated technologies as Direct Injection and Variable Valve Timing (VVT), the highway

rating of just 6.6 L/100 km** is something you might expect from a typical mid-size sedan. If your hunger for high performance requires some added aggression, Camaro SS has your name on it, with a High Output 6.2L V8 engine that efficiently generates a beastly 426 horsepower† - 14 hp more than the 2012 Ford Mustang GT.* What side of your personality has the upper hand?

* Based on latest competitive information available at time of printing.
** 2012 Chevrolet Camaro 2LS equipped with standard 3.6L V6 engine and standard 6-speed manual transmission. Based on GM testing in accordance with approved Transport Canada test methods. Your actual fuel consumption may vary.
† When equipped with standard 6-speed manual transmission.



Camaro 2LT Convertible, shown in Summit White with available RS Package and other available equipment.

AN EXCELLENT EXAMPLE OF TOP-DOWN ENGINEERING.

No question: Camaro Convertible is a showstopper, with a look that is every bit as aggressive as its Coupe sibling. The power-folding top makes the transition to a sleek, top-down form in about 20 seconds – with a finished appearance that is further enhanced by the available tonneau cover. But what makes the Convertible stand out even more is the fact it's also a showcase of engineering. The main hurdle to overcome with convertibles is chassis flex. Without a fixed roof, it is hard to make the chassis rigid enough to ensure the same handling

dynamics as a coupe. Give Chevrolet's talent-laden engineering team this challenge and the outcome is very different. They specified a series of distinct forms of bracing, including a strut-to-strut tower, transmission support reinforcement, underbody tunnel, plus front and rear V braces. The result is significantly better bending and torsional rigidity than the Mustang Convertible.* This translates not only into a more solid connection with the road, but also reduced noise and vibration. Top-down driving – with no downside.

* Based on latest competitive information available at time of printing.

“COUNTERINTUITIVE THOUGH IT MAY BE... CUTTING OFF THE ROOF HAS MADE THE CAMARO A BETTER CAR.”
- MOTOR TREND, MARCH 2011



THE WAY IT LOOKS IS THE WAY IT FEELS.

Camaro's signature dual cockpit configuration and twin analogue gauge cluster show how far sports car design has evolved, echoing elements of the past, while having a distinctively modern look. The firm seat structure provides the level of support needed to fully exploit Camaro's precision handling. Choose your tunes, from either the standard CD or MP3 player – or the 130 channels of the standard SiriusXM Satellite Radio™*. Then shift the standard six-speed manual transmission into gear. As riveting as Camaro is to look at – that feeling is only intensified when you drive it.

* Available in 10 Canadian provinces and the 48 contiguous United States. Subscription sold separately after trial period. Visit xmradio.ca for details.
** Visit onstar.ca for coverage map, details and system limitations. Services vary by model and conditions.



1. The four-pack gauge set offers an up-to-the-minute spin on retro styling, with engine oil pressure and transmission oil temperature readouts. These gauges are included in Camaro 2LT and 2SS models.

2. A CD player with MP3 playback and an auxiliary audio input jack for your iPod® or other MP3 players is standard. Adding to the entertainment, SiriusXM Satellite Radio™* is also standard.

3. Head-Up Display (HUD) projects information on to the windshield, such as vehicle speed, OnStar® Turn-by-Turn Navigation directions** and other important vehicle data. Standard on 2LT and 2SS models.



Camaro 2SS Coupe interior, shown with available Inferno Orange Trim Package.



Camaro 2SS Convertible, shown in Rally Yellow with available equipment.



1



2



3

TECHNOLOGICAL ADVANCES. DRAMATIC RESULTS.

Camaro's performance credentials are extensive. They include such respected names as Brembo® and its massive four-piston performance brakes and Pirelli® with P Zero™ ultra-high-performance tires on SS models. Dig a little deeper and you'll find robust microcomputer processing power that enhances the precision of the handling dynamics – which were optimized and refined on one of the most legendary proving grounds in the world: the Nürbschleife race course at the Nürburgring in Germany.

These settings were made even more exact by the supremely rigid chassis that virtually eliminates both bending and twisting. And the handling is made that much more assured thanks to the three mode StabiliTrak® electronic stability control system that is on LS and LT models – SS models add a fourth competitive mode. That's the technical side of the equation. The dramatic side – the part that fuels your passion for driving, is only revealed by first-hand experience behind the wheel.

1. The uncompromised performance of Camaro Convertibles is assisted by the high-strength tower-to-tower brace that minimizes chassis flex.
2. Another important component of Camaro SS performance is its massive Brembo® four-piston vented disc brakes.
3. The performance suspension on SS models feature a multi-link independent rear suspension design with progressive-rate coil springs over shocks.



Camaro ZL1 Coupe, shown in Victory Red.

ZL1 – THE ULTIMATE EXPRESSION OF CAMARO.

Camaro's leading-edge technology is about to get even edgier with the introduction of the ZL1. It arrives with exclusive exterior design features such as an aluminum hood with carbon fibre inserts and air extractors. It is powered by the supercharged LSA 6.2L V8 engine that generates an astounding 580 horsepower – a full 30 hp more than the Shelby GT500 – and 556 pounds-feet of torque.* The engine is mated with a Tremec® MG9 six-speed manual transmission.

The handling also ups the ante, with a segment-exclusive** Magnetic Ride Control® suspension. Contact with the road will be optimized by the 20 in. forged aluminum wheels and Goodyear® Eagle F1 Supercar G:2 tires. Without question, the fastest and hottest Camaro. Ever. The ZL1. Arriving early 2012.

* Based on GM testing and latest competitive information available at time of printing.

** Based on WardsAuto.com 2011 Middle Specialty segment and latest competitive information available at time of printing.

IT'S TIME TO ACCESSORIZE.

Now's the time to put your personal stamp on your vehicle with the addition of Chevrolet Accessories. They are the only accessories that were created as part of Camaro's development process. That ensures they offer the same quality of fit, finish and function as the rest of your vehicle. They are backed by the 3-year/60,000 km New Vehicle Limited Warranty* and can be included in your lease or finance agreement. Ask your dealer for a complete list of the Chevrolet Accessories available for Camaro, or visit chevrolet.ca

* Whichever comes first, when permanently installed by the dealer at the time you purchased or leased your new vehicle, or for the remainder of the New Vehicle Limited Warranty if installed after the time of your vehicle purchase or lease, but no less than 12 months.

Chevrolet Accessories available for Camaro include:

- Custom rear spoiler
- Body-coloured engine cover
- 21-in. machined aluminum wheels
- Ground Effects Package.



ONSTAR®



OnStar® and 6 months of the Directions & Connections Plan** are standard on all Camaro models. Take a look at the range of safety, security, information and communications features that are included. To find out more about the range of OnStar® features and services available, please visit onstar.ca

Security Services

If your vehicle is stolen, onboard OnStar® GPS technology helps police locate it. OnStar® also includes remote door unlock, plus remote horn and light services.

Vehicle Diagnostics

You can receive monthly emails updating the status of your vehicle's key operating systems.

Turn-by-Turn Navigation

It's the simplest and smartest navigation system available. Simply push the OnStar® button and tell an Advisor where you are going. Instructions are then downloaded to your vehicle, giving you turn-by-turn directions to your destination.

Automatic Crash Response

The moment built-in OnStar® sensors detect a collision, they automatically alert an OnStar® Advisor of critical details, such as the type and severity of the crash – and your exact location. The Advisor relays the information immediately to emergency responders, directing them to your location and preparing them for what to expect at the scene.**

Emergency Services

Press the red Emergency button, and you'll get a priority connection to a specially trained Advisor who will contact the appropriate emergency service provider and guide them right to your location.**

Hands-Free Calling

This feature enables you to make and receive calls, while keeping your eyes on the road and your hands on the steering wheel. It's not only safer and more convenient, it's also the law in many Canadian provinces.



OnStar RemoteLink™ Mobile App

OnStar RemoteLink™ places the power of OnStar® right in the palm of your hand. Whether you're across the street or across the country, OnStar RemoteLink™ gives you unparalleled control and unprecedented connectivity to perform a series of functions remotely from your iPhone® or select Android™ devices.

Download and register the app at onstar.ca and you'll have access to the following functions right at your fingertips:

- Lock or unlock your doors from any distance
- Start your engine remotely (if equipped)
- Activate your horn and lights to find your vehicle
- View real-time fuel information (range to empty, fuel remaining, current fuel consumption and lifetime fuel consumption)
- Check your remaining oil life and tire pressure
- Access your OnStar® account information
- Contact an OnStar® Advisor, Roadside Assistance or your preferred Chevrolet dealer.



** Visit onstar.ca for coverage map, details and system limitations. Services vary by model and conditions. OnStar® acts as a link to existing emergency service providers.

† Available in 10 Canadian provinces and the 48 contiguous United States. Subscription sold separately after trial period. Visit xmradio.ca for details.



CAMARO MODEL OVERVIEW

CAMARO COUPE 1LS

Camaro 1LS includes these features:

- 323 hp 3.6L V6 engine with Direct Injection and Variable Valve Timing (VVT)
- GM Oil Life Monitoring System
- 6-speed manual transmission (6-speed automatic transmission with TAPshift® manual shift control available)
- 4-wheel disc brakes with ABS
- StabiliTrak® electronic stability control system
- Traction control
- Limited-slip differential
- 4-wheel independent sport suspension
- 18-in. heritage steel wheels
- Power exterior mirrors
- Rear spoiler

- Dual exhaust system with polished stainless steel exhaust tips
- Remote keyless entry system
- Six airbags
- Driver Information Centre with compass
- Tire pressure monitoring system
- Air conditioning
- Power windows and door locks
- Tilt and telescopic steering column
- Cruise control
- Steering wheel-mounted Bluetooth®, cruise and audio system controls
- Manual 4-way driver and manual 2-way front-passenger seat adjuster

- Enhanced 6-speaker audio system with CD player, MP3 playback and auxiliary audio input jack
- SiriusXM Satellite Radio™**
- Bluetooth® hands-free phone connectivity
- OnStar® with 6 months of the Directions & Connections Plan featuring Turn-by-Turn Navigation** and OnStar RemoteLink™.

CAMARO COUPE 2LS

Camaro 2LS enhances 1LS features with:

- 6-speed automatic transmission with TAPshift® manual shift control
- 2.92 rear axle ratio
- Limited-slip differential is deleted.

CAMARO COUPE/CONVERTIBLE 1LT

Camaro 1LT enhances 2LS features with:

- Power convertible top with glass rear window (Convertible)
- Rear vision camera (Convertible)
- Ultrasonic rear parking assist (Convertible)
- 6-speed manual transmission standard (6-speed automatic with TAPshift® manual shift control available)
- 18-in. painted aluminum wheels
- Limited-slip differential
- Fog lights
- Auto-dimming interior rear-view mirror with rear vision camera display on Convertible

- Power 6-way driver and front-passenger seat adjusters
- Enhanced 7-speaker audio system with CD player, MP3 playback and auxiliary audio input jack (Convertible).

CAMARO COUPE/CONVERTIBLE 2LT

Camaro 2LT enhances 1LT features with:

- 19-in. painted aluminum wheels
- Heated power exterior mirrors with auto-dimming driver's mirror
- Convertible top tonneau cover (Convertible)
- Rear vision camera (Coupe)
- Ultrasonic rear parking assist (Coupe)
- Head-Up Display (HUD)
- Leather-wrapped steering wheel and shifter
- Auto-dimming interior rear-view mirror with rear vision camera display (Coupe and Convertible)
- Centre console-mounted auxiliary gauges
- Heated, leather-appointed front sport bucket seats
- 9-speaker Boston Acoustics® premium audio system with a 245-Watt amplifier (8-speaker on Convertible)
- Wireless Preferred Device Interface Module (PDIM)
- USB port
- Universal home remote transmitter.

CAMARO COUPE/CONVERTIBLE 1SS

Camaro 1SS includes these distinctive features:

- 426 hp High Output 6.2L V8 engine standard (400 hp High Output 6.2L V8 engine with Active Fuel Management® available)
- Engine oil cooler
- 6-speed manual transmission standard (6-speed automatic transmission with TAPshift® manual shift control available)
- Brembo® performance brakes
- Performance suspension
- 20-in. painted aluminum wheels with Sterling Silver-finish
- Unique SS lower body extension, front air scoop, lower grille, rear diffuser and "Chevrolet" door sill plates
- Rear vision camera (Convertible)
- Ultrasonic rear parking assist (Convertible)
- Leather-wrapped steering wheel and shifter
- Auto-dimming interior rear-view mirror with rear vision camera display (Convertible)
- "SS" embroidery on front-seat headrests.

CAMARO COUPE/CONVERTIBLE 2SS

Camaro 2SS enhances 1SS features with:

- Heated power exterior mirrors with auto-dimming driver's mirror
- Convertible top tonneau cover (Convertible)
- Rear vision camera
- Ultrasonic rear parking assist (Coupe and Convertible)
- Head-Up Display (HUD)
- Auto-dimming interior rear-view mirror with rear vision camera display (Coupe and Convertible)
- Centre console-mounted auxiliary gauges
- Heated, leather-appointed front sport bucket seats
- 9-speaker Boston Acoustics® premium audio system with a 245-Watt amplifier (8-speaker on Convertible)
- Wireless Preferred Device Interface Module (PDIM)
- USB port
- Universal home remote transmitter.

* Available in 10 Canadian provinces and the 48 contiguous United States. Subscription sold separately after trial period. Visit xmradio.ca for details.

** Visit onstar.ca for coverage map, details and system limitations. Services vary by model and conditions. OnStar® acts as a link to existing emergency providers.

STAY PLUGGED IN.



Communications and entertainment go mobile in Camaro. You can stay in touch with your friends, while you listen to your favourite tunes on an excellent audio system. Choose the electronic equipment you want to stay connected and entertained.



SiriusXM Satellite Radio™†

You can choose from up to 130 channels of SiriusXM Satellite Radio™. It's standard on all Camaro models and offers everything from a vast range of musical genres, to news, talk, comedy and sports channels – including more than 1000 NHL games.

Boston Acoustics® Audio System

The 9-speaker Boston Acoustics® premium audio system (8-speaker on Convertible) features a 245-Watt amplifier. Standard on 2LT and 2SS models and available on 1LT and 1SS.



Bluetooth®

Bluetooth® hands-free phone connectivity enables you to make, answer and end calls on compatible mobile phones, using available steering wheel-mounted controls. Standard on all models.



Camaro 2LT Coupe, shown in Crystal Red Tintcoat with available accessories.

CAMARO STANDARD AND OPTIONAL EQUIPMENT

| SAFETY AND SECURITY | LS | | 1LT | | 2LT | | 1SS | | 2SS | |
|---|-------|-------|--------------|--------------|--------------|--------------|--------------|--------------|--------------|--------------|
| | COUPE | COUPE | COUPE/CONVT. | COUPE/CONVT. | COUPE/CONVT. | COUPE/CONVT. | COUPE/CONVT. | COUPE/CONVT. | COUPE/CONVT. | COUPE/CONVT. |
| Airbags – driver and front-passenger, dual-stage, frontal with passenger detecting system and airbag suppression – driver and front-passenger, seat-mounted side-impact – driver and front-passenger, seat-mounted high-position side-impact – front-to-rear outboard seating positions head curtain side-impact | S | S | S | S | S | S | S | S | S | S |
| OnStar® – In-Vehicle Communications and Assistance Service, includes 6 months of the Directions & Connections Plan with Turn-by-Turn Navigation* and OnStar RemoteLink™ | S | S | S | S | S | S | S | S | S | S |
| Rear vision camera | – | – | 0¹/₅ | S | 0¹/₅ | S | – | – | – | – |
| Safety restraints – LATCH (Lower Anchors and top Tethers for Children), rear seats | S | S | S | S | S | S | S | S | S | S |
| StabiliTrak® – electronic stability control system | S | S | S | S | S | S | S | S | S | S |
| Theft-deterrent system – electronic immobilizer | S | S | S | S | S | S | S | S | S | S |
| Traction control – electronic, full-function, all-speed | S | S | S | S | S | S | S | S | S | S |
| Ultrasonic rear parking assist – rear obstacle detection with audible/visible warning | – | – | 0¹/₅ | S | 0¹/₅ | S | – | – | – | – |
| Rear Vision Package – includes ultrasonic rear parking assist and auto-dimming interior rear-view mirror with rear vision camera display | – | – | 0/₅ | S | 0/₅ | S | – | – | – | – |

| MECHANICAL | LS | | 1LT | | 2LT | | 1SS | | 2SS | |
|--|-------|-------|--------------|--------------|--------------|--------------|--------------|--------------|--------------|--------------|
| | COUPE | COUPE | COUPE/CONVT. | COUPE/CONVT. | COUPE/CONVT. | COUPE/CONVT. | COUPE/CONVT. | COUPE/CONVT. | COUPE/CONVT. | COUPE/CONVT. |
| Battery – with run-down protection | S | S | S | S | S | S | S | S | S | S |
| Brakes – power, 4-wheel disc – power, 4-wheel disc, Brembo® performance 4-piston front and rear calipers – 4-wheel Anti-lock Braking System (ABS) | S | S | S | S | S | S | – | – | S | S |
| Differential – limited slip rear | S | – | S | S | S | S | – | – | 0 | 0 |
| Drive – rear-wheel | S | S | S | S | S | S | S | S | S | S |
| Engine – 3.6L DOHC V6 with VVT and Direct Injection, E85 FlexFuel capable Horsepower – 323 @ 6800 rpm; Torque – 278 lb.-ft. @ 4800 rpm – 6.2L LS3 High Output V8 with SFI and standard manual transmission Horsepower – 426 @ 5900 rpm; Torque – 420 lb.-ft. @ 4600 rpm – 6.2L L99 V8 with SFI, Active Fuel Management® and available automatic transmission Horsepower – 400 @ 5900 rpm; Torque – 410 lb.-ft. @ 4300 rpm² – block heater – oil cooler | S | S | S | S | – | – | – | – | 0 | 0 |
| Exhaust system – aluminum stainless steel – dual outlets with polished tips | S | S | S | S | S | S | S | S | S | S |
| Steering – power hydraulic, rack-and-pinion, variable-effort | S | S | S | S | S | S | S | S | S | S |
| Suspension – 4-wheel independent, sport – 4-wheel independent, performance | S | S | S | S | –/S | –/S | – | – | –/S | –/S |

| MECHANICAL (CONTINUED) | LS | | 1LT | | 2LT | | 1SS | | 2SS | |
|--|-------|-------|--------------|--------------|--------------|--------------|--------------|--------------|--------------|--------------|
| | COUPE | COUPE | COUPE/CONVT. | COUPE/CONVT. | COUPE/CONVT. | COUPE/CONVT. | COUPE/CONVT. | COUPE/CONVT. | COUPE/CONVT. | COUPE/CONVT. |
| Transmission – 6-speed manual – 6-speed automatic with overdrive and TAPShift® manual shift control – Hurst short-throw 6-speed manual shifter | S | – | S | S | S | S | S | S | S | S |
| Vehicle starter system – remote | – | – | 0⁵ | 0⁶ | 0⁶ | 0⁶ | – | – | – | – |

| EXTERIOR | LS | | 1LT | | 2LT | | 1SS | | 2SS | |
|--|-------|-------|--------------|--------------|--------------|--------------|--------------|--------------|--------------|--------------|
| | COUPE | COUPE | COUPE/CONVT. | COUPE/CONVT. | COUPE/CONVT. | COUPE/CONVT. | COUPE/CONVT. | COUPE/CONVT. | COUPE/CONVT. | COUPE/CONVT. |
| Antenna – integrated, rear window – integrated, rear spoiler | S | S | S/– | S/– | S/– | S/– | S/– | S/– | S/– | S/– |
| Convertible top – power, with glass rear window – tonneau cover | – | – | –/S | –/S | –/S | –/S | –/S | –/S | –/S | –/S |
| Fascia – front and rear body colour with front grille and rear diffuser – unique SS front and rear body colour with lower extension, front air scoop, brake cooling slots, unique lower grille and rear diffuser | S | S | S | S | – | – | S | S | – | – |
| Glass – Solar Ray, tinted | S | S | S | S | S | S | S | S | S | S |
| Lights – daytime running lights with automatic light control – halogen – Xenon High-Intensity Discharge (HID)⁷ – fog lights, projector beam⁸ | S | S | S | S | S | S | S | S | S | S |
| Mirrors – power remote control, manual folding – heated, power remote control with driver's side auto-dimming feature | S | S | S | S | S | S | S | S | S | S |
| Mouldings – rocker, body-colour | S | S | S | S | S | S | S | S | S | S |
| Spoiler – rear, deck-lid | S | S | S | S⁹ | S | S⁹ | – | – | – | – |
| Sunroof – power, tilt and sliding glass panel, express-open feature | – | – | 0/– | 0⁹/– | 0/– | 0⁹/– | – | – | – | – |
| Tires – P245/55R18 all-season** touring – P245/50R19 all-season** touring – P245/45R20 front and P275/40R20 rear summer performance¹ – compact spare – inflator kit | S | S | S | – | – | – | S | S | – | – |
| Wheels – 18" x 7.5" heritage steel (A) – 18" x 7.5" painted aluminum (B) – 19" x 8" painted aluminum (C) – 19" x 8" polished aluminum (D) – 20" x 8" front and 20" x 9" rear, Sterling Silver-finish aluminum (E) – 20" x 8" front and 20" x 9" rear, Midnight Silver-finish aluminum (F)⁷ – 20" x 8" front and 20" x 9" rear, Black painted aluminum¹² – 20" x 8" front and 20" x 9" rear, Deep Silver painted aluminum (G)¹³ – 20" x 8" front and 20" x 9" rear, polished aluminum (H) | S | S | – | – | – | – | – | – | 0 | 0 |
| Windshield wipers – speed sensitive, 2-speed with variable delay (intermittent) | S | S | S | S | S | S | S | S | S | S |

| EXTERIOR (CONTINUED) | LS | | 1LT | | 2LT | | 1SS | | 2SS | |
|--|-------|-------|--------------|--------------|--------------|--------------|--------------|--------------|--------------|--------------|
| | COUPE | COUPE | COUPE/CONVT. | COUPE/CONVT. | COUPE/CONVT. | COUPE/CONVT. | COUPE/CONVT. | COUPE/CONVT. | COUPE/CONVT. | COUPE/CONVT. |
| LT RS Package – includes body-coloured roof ditch moulding and antenna (Coupe only), 20" x 8" front and 20" x 9" rear Midnight Silver-finish aluminum wheels (F) with P245/45R20 front and P275/40R20 rear summer performance tires,¹ Xenon High-Intensity Discharge (HID) headlights and RS badging⁹ | – | – | 0 | 0 | – | – | – | – | – | – |
| SS RS Package – includes body-coloured roof ditch moulding and antenna (Coupe only), 20" x 8" front and 20" x 9" rear Midnight Silver-finish aluminum wheels (F), Xenon High-Intensity Discharge (HID) headlights and Red SS badging⁹ | – | – | – | – | 0 | 0 | – | – | – | – |
| Transformers Special Edition – includes Transformers Special Edition black decal stripes and side gill decal stripes, body-coloured rear high wing spoiler with black stanchions, 20" x 8" front and 20" x 9" rear Black painted aluminum wheels with centre caps featuring the Autobot icon, Autobot icon exterior fender badging, Transformers Special Edition sill plate, Black leather-appointed seats with Yellow accent stitching on door armrests, centre console lid, instrument panel insert, steering wheel and shifter, Autobot icon embroidery on console lid and front seat head-restraints, Carbon Flash Metallic instrument panel and door trim appliques with ice blue LED light pipe accents¹⁵ | – | – | – | 0/– | – | 0/– | – | – | – | 0/– |
| 45th Anniversary Package – includes body-coloured roof ditch moulding and antenna (Coupe only), Brilliant Red/Medium Charcoal 45th Anniversary Stripe Package, Black leather-appointed seats with 45th Anniversary embroidered logo on front seat headrests, unique stitching on seats, headrests, steering wheel, shifter, console and door armrest, 20" x 8" front and 20" x 9" rear Deep Silver painted aluminum wheels (G), unique fog lights and taillight bezel finish and interior and exterior badging¹⁶ | – | – | – | 0 | – | 0 | – | – | – | 0 |

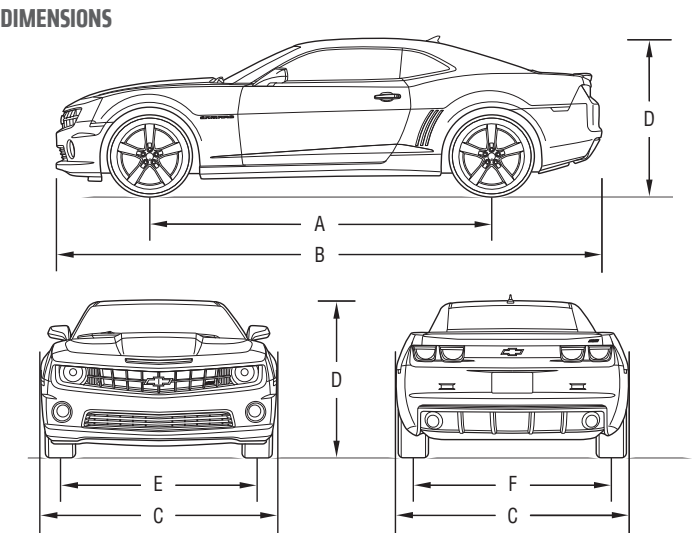
| INTERIOR | LS | | 1LT | | 2LT | | 1SS | | 2SS | |
|--|-------|-------|--------------|--------------|--------------|--------------|--------------|--------------|--------------|--------------|
| | COUPE | COUPE | COUPE/CONVT. | COUPE/CONVT. | COUPE/CONVT. | COUPE/CONVT. | COUPE/CONVT. | COUPE/CONVT. | COUPE/CONVT. | COUPE/CONVT. |
| Climate Control – manual air conditioning – air filtration system | S | S | S | S | S | S | S | S | S | S |
| Console – front floor with dual cupholders | S | S | S | S | S | S | S | S | S | S |
| Cruise control | S | S | S | S | S | S | S | S | S | S |
| Defogger – electric rear-window | S | S | S | S | S | S | S | S | S | S |
| Floor mats – front, carpeted | S | S | S | S | S | S | S | S | S | S |

| INTERIOR (CONTINUED) | LS | | 1LT | | 2LT | | 1SS | | 2SS | |
|---|-------|-------|--------------|--------------|--------------|--------------|--------------|--------------|--------------|--------------|
| | COUPE | COUPE | COUPE/CONVT. | COUPE/CONVT. | COUPE/CONVT. | COUPE/CONVT. | COUPE/CONVT. | COUPE/CONVT. | COUPE/CONVT. | COUPE/CONVT. |
| Instrumentation – analogue cluster (includes speedometer, tachometer, coolant temperature and fuel gauges) – Driver Information Centre (DIC) (includes digital speedometer, 2 trip odometers, average speed, fuel range, instantaneous fuel consumption, average fuel consumption, GM Oil Life Monitoring System, tire pressure monitoring system, compass and programmable features) – Head-Up Display (HUD) (includes readouts for vehicle speed, tachometer, selected gear, high beam indicator, turn signals, compass, exterior temperature, vehicle messages, audio system information and Turn-by-Turn Navigation) – centre console-mounted battery voltmeter, oil pressure gauge, oil temperature gauge and transmission fluid temperature gauges | S | S | S | S | S | S | S | S | S | S |
| Lighting – courtesy with delayed entry/exit, theatre dimming, dome, front reading and trunk | S | S | S | S | S | S | S | S | S | S |
| Locks – power, programmable with lock-out protection – remote keyless entry system with panic feature and trunk release | S | S | S | S | S | S | S | S | S | S |
| Mirror – rear-view, with OnStar® controls – rear-view, with OnStar® controls, auto-dimming and rear vision camera display | S | S | S | S | S | S | S | S | S | S |
| Power outlets – auxiliary, centre console storage area and at front of centre console | S | S | S | S | S | S | S | S | S | S |
| Retained accessory power | S | S | S | S | S | S | S | S | S | S |
| Sill plates – with "Chevrolet" logo | – | – | – | – | S | S | – | – | – | – |
| Steering column – tilt and telescopic adjustable | S | S | S | S | S | S | S | S | S | S |
| Steering wheel – 3-spoke with Bluetooth® cruise and audio system controls – 3-spoke, leather-wrapped with Bluetooth®, cruise and audio system controls (includes leather-wrapped shifter) | S | S | S | S | S | S | S | S | S | S |
| Sunshades – driver and front passenger – driver and front-passenger covered vanity mirrors | – | – | –/S | –/S | –/S | –/S | – | – | – | – |
| Trunk – release, power remote | S | S | S | S | S | S | S | S | S | S |
| Universal home remote – programmable 3-channel transmitter | – | – | – | S | – | S | – | – | – | – |
| Windows – power, driver and passenger, express-up and down – power, rear quarter, express-up and down | S | S | S | S | S | S | S | S | S | S |
| Convenience and Connectivity Package – includes wireless PDIM and USB port (also includes leather-wrapped steering wheel and shifter on 1LT) | – | – | 0 | – | 0 | – | – | – | – | – |
| Inferno Orange Trim Package – includes Black interior with Inferno Orange leather-appointed seats with accent stitching on steering wheel, shifter, armrests, centre console and seats, Inferno Orange door trim and instrument panel appliqué and ice blue LED light pipe accents¹⁸ | – | – | – | 0 | – | 0 | – | – | – | 0 |

| SEATS | LS | | 1LT | | 2LT | | 1SS | | 2SS | |
|--|-------|-------|--------------|--------------|--------------|--------------|--------------|--------------|--------------|--------------|
| | COUPE | COUPE | COUPE/CONVT. | COUPE/CONVT. | COUPE/CONVT. | COUPE/CONVT. | COUPE/CONVT. | COUPE/CONVT. | COUPE/CONVT. | COUPE/CONVT. |
| Cloth reclining front bucket seats with adjustable head restraints | S | S | – | – | – | – | – | – | – | – |
| Sport cloth reclining front bucket seats with adjustable head restraints | – | – | S | – | S | – | – | – | – | – |
| Front bucket seats with heated leather-appointed seating surfaces and adjustable head restraints | – | – | – | S | – | S | – | – | S | – |
| Power driver and front-passenger recliners | S | S | S | S | S | S | S | S | S | S |
| Manual 4-way driver and manual 2-way front-passenger seat adjuster | S | S | – | – | – | – | – | – | – | – |
| Power 6-way driver and front-passenger seat adjuster | – | – | S | S | S | S | S | S | S | S |
| Front-passenger seat-back map pocket | – | – | S | S | S | S | S | S | S | S |
| *SS" embroidery on front headrests | – | – | – | – | S | S | – | – | – | – |
| Seatbacks – rear, folding with trunk pass-through | S | S | S/– | S/– | S/– | S/– | S/– | S/– | S/– | S/– |

| ENTERTAINMENT | LS | | 1LT | | 2LT | | 1SS | | 2SS | |
|--|-------|-------|--------------|--------------|--------------|--------------|--------------|--------------|--------------|--------------|
| | COUPE | COUPE | COUPE/CONVT. | COUPE/CONVT. | COUPE/CONVT. | COUPE/CONVT. | COUPE/CONVT. | COUPE/CONVT. | COUPE/CONVT. | COUPE/CONVT. |
| All Camaro audio systems include an electronically tuned AM/FM stereo with MP3 playback, music navigator, auxiliary audio input jack, TheftLock®, digital clock and Graphic Information Display (GID) and exterior temperature display | S | S | S | S | S | S | S | S | S | S |
| 6-speaker enhanced audio system | S | S | S/– | – | S/– | – | – | – | – | – |
| 7-speaker enhanced audio system | – | – | –/S | – | –/S | – | – | – | – | – |
| 8-speaker Boston Acoustics® premium audio system with 245-Watt amplifier | – | – | –/0 | –/S | –/0 | –/S | – | – | – | – |
| 9-speaker Boston Acoustics premium audio system with 245-Watt amplifier | – | – | 0/– | S/– | 0/– | S/– | – | – | – | – |
| SiriusXM Satellite Radio™ ¹¹ | S | S | S | S | S | S | S | S | S | S |
| Bluetooth® – hands-free phone connectivity | S | S | S | S | S | S | S | S | S | S |
| Wireless PDIM and USB port | – | – | 0¹⁷ | S | 0¹⁷ | S | – | – | – | – |

S – Standard. 0 – Optional individually or in combination with other optional equipment.
 1 – Included with available Rear Vision Package.
 2 – Includes remote vehicle starter system.
 3 – Deletes limited slip differential.
 4 – Includes remote vehicle starter system when ordered with available Convenience and Connectivity Package.
 5 – Included with available automatic transmission when available Convenience and Connectivity Package is ordered.
 6 – Included with available automatic transmission.
 7 – Included with available RS Package.
 8 – Fog lights act as daytime running lights when available RS Package is ordered.
 9 – Not available with Transformers Special Edition.
 10 – Not available with 45th Anniversary Package.
 11 – Not available with RS Package.
 12 – Included with available Transformers Special Edition.
 13 – Included with available 45th Anniversary Package.
 14 – Requires available RS Package.
 15 – Available with Rally Yellow exterior colour and Black interior trim only. Includes RS Package but deletes 20" Midnight Silver aluminum wheels included with that package. Deletes standard rear spoiler. Not available with 45th Anniversary Package or power sunroof.
 16 – Available with Black Granite Metallic exterior colour and Black interior trim only. Includes RS Package but deletes 20" Midnight Silver aluminum wheels included with that package. Deletes standard rear spoiler. Not available with Transformers Special Edition.
 17 – Included with available Convenience and Connectivity Package.
 18 – Requires Inferno Orange interior trim. Not available with Transformers Special Edition or 45th Anniversary Package.
 * Visit onstar.ca for coverage map, details and system limitations. Services vary by model and conditions.
 ** All-season tires may not satisfy winter tire requirements in all regions of the country. Tires specifically designed for severe winter conditions and marked with the "winter tire" symbol ❄️ may be required during certain months or in certain regions. Contact your Provincial, Municipal or local road authority for information regarding which tires are required in your particular area.
 † Installation of 4 winter tires recommended for winter driving conditions.
 †† Available in 10 Canadian provinces and the 48 contiguous United States. Monthly subscription sold separately after trial period. Visit xmradio.ca for details.



| EXTERIOR, mm (in.) | COUPE | CONVERTIBLE |
|--|----------------------------|----------------------------|
| Wheelbase (A) | 2852 (112.3) | 2852 (112.3) |
| Length (B) | 4836 (190.4) | 4836 (190.4) |
| Width (C) | 1918 (75.5) | 1918 (75.5) |
| Height (D) | 1377 (54.2) | 1389 (54.7) |
| Front tread (E) | 1618 (63.7) | 1618 (63.7) |
| Rear tread (F) – Camaro LS, LT – Camaro SS | 1628 (64.1) 1618 (63.7) | 1628 (64.1) 1618 (63.7) |

| INTERIOR, mm (in.) front/rear | COUPE | CONVERTIBLE |
|-------------------------------|-----------------------|-----------------------|
| Headroom | 950/897 (37.4/35.3) | 960/897 (37.8/35.3) |
| Legroom | 1077/757 (42.4/29.9) | 1077/757 (42.4/29.9) |
| Shoulder room | 1444/1080 (56.9/42.5) | 1445/1080 (56.9/42.5) |
| Hip room | 1436/1255 (56.5/49.4) | 1436/1255 (56.5/49.4) |

| CAPACITIES/WEIGHT | | |
|------------------------------|---------------------------------------|-------------|
| Trunk, L (cu. ft.) | 320 (11.3) | 289 (10.2)¹ |
| Fuel tank, L (imp. gal.) | 72 (15.8) | 72 (15.8) |
| Curb weight (est.), kg (lb.) | – 1LS with manual transmission | 1718 (3780) |
| | – 2LS with automatic transmission | 1713 (3769) |
| | – 1LT/2LT with manual transmission | 1700 (3471) |
| | – 1LT/2LT with automatic transmission | 1705 (3750) |
| | – 1SS/2SS with manual transmission | 1755 (3860) |
| | – 1SS/2SS with automatic transmission | 1779 (3913) |
| | 1810 (3982) | 1802 (3964) |
| | 1875 (4125) | 1897 (4173) |

¹ Convertible top up. Trunk volume is 221 L (7.8 cu. ft.) top down.
 † When properly equipped. Includes weight of trailer, cargo, passengers and equipment. All towing recommendations are subject to change. Trailer tongue load should be 10% of the maximum trailer weight but should not exceed the load rating specified for that vehicle, engine or hitch combination. See your dealer

WARRANTY

IT ISN'T FINE PRINT – IT'S A COMMITMENT.

Chevrolet puts the same care into its warranty and support programs that it does into the cars and trucks it builds. So you can add peace of mind knowing that every Chevrolet is backed by the best coverage in Canada:

- 3-year/60,000 km New Vehicle Limited Warranty*
 - 5-year/160,000 km Powertrain Component Limited Warranty, with \$0 deductible on repairs and the warranty is fully transferable at no charge*
 - 5-year/160,000 km Courtesy Transportation*
 - 5-year/160,000 km 24/7 Roadside Assistance*
 - 6-year/160,000 km rust-through perforation coverage*
 - 8-year/130,000 km coverage on catalytic converters and powertrain control modules (PCMs).*
- * Whichever comes first. Conditions and limitations apply, see dealer for details.

OTHER OWNERSHIP PRIVILEGES AND PROGRAMS:**

- **GM Protection Plan (GMPP)** – the only extended service plan backed by the resources and commitment of General Motors. GMPP may be purchased at the time of sale or subsequently during the New Vehicle Limited Warranty period
- **GM Goodwrench Service** – with GM-certified technicians and GM-approved parts, nobody knows your GM vehicle better
- **Chevrolet Owner Centre** – as an owner, take advantage of the Chevrolet Owner Centre. This online owner's destination gives you access to coupons, contests, current offers and the latest driving and maintenance tips. Find out more at [ChevroletOwner.ca](#)

** Conditions and limitations apply.

TO HELP YOU PURCHASE OR LEASE A NEW VEHICLE:

- **Purchase Financing and Leasing** – on the spot financing, see dealer for full details†
- **GM Student Bonus Program** – students or recent graduates of high school, college or university** may be entitled to receive a Student Bonus vehicle redemption allowance of \$500 or \$750†† (tax inclusive) (purchased vehicle dependant) to use towards the purchase, lease or finance of one eligible new Chevrolet vehicle
- **The GM Card** – GM cardholders may redeem up to \$3500 GM Card® Earnings (subject to Vehicle Redemption Allowances) toward the Total Purchase Price on eligible new GM vehicles.†† For full program details please visit [thegmcard.ca](#)

† Subject to eligibility. †† Program subject to change. ** Conditions and limitations apply.

INFORMATION RESOURCES:

You can find more information about these programs from your GM dealer, or at these information centres:

- The GM website at [gm.ca](#)
- The GM Customer Care Centre at **1-800-GM-DRIVE (1-800-463-7483 or 1-800-263-3830** for TDD users).

A WORD ABOUT THIS BROCHURE

Some of the equipment shown or described throughout this brochure may be available at extra cost. We have tried to make this brochure comprehensive and factual. We reserve the right, however, to make changes at any time, without notice, in prices, colours, materials, equipment, specifications, models and availability. Specifications, dimensions, measurements, ratings and other numbers in this brochure and other printed materials provided at the dealership or affixed to vehicles are approximates based upon design and engineering drawings and prototypes and laboratory tests. Your vehicle may differ due to variations in manufacture and equipment. Since some information may have been adapted since the time of the printing, please check with your GM dealer for complete details. General Motors of Canada Limited reserves the right to lengthen or shorten the model year for any product, for any reason, or to start and end model years at different times.

A WORD ABOUT ASSEMBLY

GM vehicles are equipped with engines and components produced and assembled by different operating units of General Motors, its subsidiaries and suppliers and these engines and components may change or be obtained from different sources from time to time. All such engines and components are approved for use in GM vehicles. Certain equipment ordered may be unavailable at the time of assembly and we suggest that you verify that your vehicle includes the equipment you ordered, or if there are changes, that they are acceptable to you.

TRADEMARKS

The marks appearing in this brochure including, but not limited to: General Motors, GM, the GM emblem, the Chevrolet Accessories logo, Chevrolet, the Chevrolet emblem, Camaro and their respective logos, emblems, slogans and vehicle model names and body designs; and other marks such as Active Fuel Management, Magnetic Ride Control, StabiliTrak and TAPshift are trademarks of General Motors and/or General Motors of Canada Limited, its subsidiaries, affiliates or licensors.

OnStar, the OnStar emblem are registered trademarks and OnStar RemotelyLink is a trademark of the OnStar Corporation, LLC.

TheftLock is a registered trademark of Delphi Technologies, Inc.

Brembo is a registered trademark of Brembo S.p.A.

Tremec is a registered trademark of Transmission Technologies Corporation.

Goodyear and Eagle are registered trademarks of Goodyear Canada Inc.

Boston Acoustics is a registered trademark of the Boston Acoustic Corp.

The SiriusXM name and related logos are trademarks of XM Canada, Canadian Satellite Radio Inc.

iPhone and iPod are trademarks of Apple Computer Inc. registered in the U.S. and other countries.

Facebook is a registered trademark of Facebook Inc.

Bluetooth is a registered trademark of Bluetooth SIG Inc.

P Zero is a trademark of Pirelli & C. S.p.A.

Twitter is a trademark of Twitter, Inc.

YouTube and the Android mobile technology platform are trademarks of Google, Inc.

COPYRIGHT

©Copyright 2011 General Motors of Canada Limited. All Rights Reserved. All text, images, graphics, and other materials in this brochure are subject to the copyright and other intellectual property rights of General Motors and/or General Motors of Canada Limited. These materials may not be reproduced, distributed or modified without the express written permission of General Motors and/or General Motors of Canada Limited.

Printed in Canada, October 2011.

INTERIOR FABRICS

Cloth – 1LS/2LS



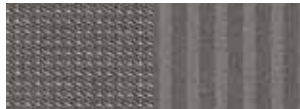
AFA – Black



AFB – Grey



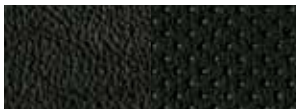
AFC/AFJ – Black



AFD/AFK – Grey



AFE/AFL – Beige



AFF/AFM/AFP*/AFQ*/AOE** – Black



AFG/AFN – Grey



AFH/AFO – Beige



AFI/AAJ – Inferno Orange†

* Requires available 45th Anniversary Package. ** Requires available Transformers Special Edition. † Requires available Inferno Orange Trim Package.

EXTERIOR/INTERIOR COLOUR COMPATIBILITY

| ▼ Exterior | ▼ Interior | | | | ▼ Stripes†† Dual Hood and Trunk | | | | | ▼ Stripes†† Single Hood and Side Hockey Stick | | | ▼ Stripes†† Fender | | |
|--|------------|--------|------|-----------------|------------------------------------|------------|-------|--------|--------|--|-------|------|-----------------------|-------|------|
| | Black | Beige¹ | Grey | Inferno Orange² | Arctic White | Cyber Grey | Black | Silver | Orange | Black | White | Grey | Black | White | Grey |
| GAN – Silver Ice Metallic | • | • | • | • | • | • | • | • | • | • | • | • | • | • | • |
| GAP – Imperial Blue Metallic | • | • | • | • | • | • | • | • | • | • | • | • | • | • | • |
| GAR – Black Granite Metallic³ | • | | | | | | | | | | | | | | |
| GAZ – Summit White | • | • | • | • | | | | | | • | | • | | | |
| GBA – Black | • | • | • | • | • | • | • | • | • | | | | • | | |
| GBE – Crystal Red Tintcoat††,4 | • | • | • | • | • | • | • | • | • | • | • | • | | | |
| GCN – Victory Red | • | • | • | • | • | • | • | • | • | • | • | • | • | • | • |
| GCO – Rally Yellow†† | • | | • | | • | • | • | • | • | • | • | • | • | • | • |
| GCR – Inferno Orange Metallic†† | • | • | • | • | • | • | • | • | • | • | • | • | • | • | • |
| GLJ – Ashen Grey Metallic | • | • | • | • | • | • | • | • | • | • | • | • | • | • | • |

†† Available at extra cost.

1 – Not available on LS.

2 – Available on 2LT and 2SS only. Requires Inferno Orange Trim Package.

3 – Available with 45th Anniversary Package only.

4 – Interim availability.

WHEELS



A – 18" x 7.5" heritage steel

B – 18" x 7.5" painted aluminum

C – 19" x 8" painted aluminum

D – 19" x 8" polished aluminum

E – 20" x 8" front and 20" x 9" rear, Sterling Silver-finish aluminum

F – 20" x 8" front and 20" x 9" rear, Midnight Silver-finish aluminum

G – 20" x 8" front and 20" x 9" rear, Deep Silver painted aluminum

H – 20" x 8" front and 20" x 9" rear, polished aluminum

EXTERIOR COLOURS



GAN – Silver Ice Metallic



GAP – Imperial Blue Metallic



GAR – Black Granite Metallic³



GAZ – Summit White



GBA – Black



GBE – Crystal Red Tintcoat††,4



GCN – Victory Red



GCO – Rally Yellow††



GCR – Inferno Orange Metallic††



GLJ – Ashen Grey Metallic

Due to limitations in the printing process, the colours shown may differ slightly from the actual colour. For more accurate colour samples, ask your sales consultant to see the dealer showroom colour display. Exterior colours may be subject to change during the 2012 model year, please check with your sales consultant or visit [chevrolet.ca](#) for latest colour availability on Camaro.

STRIPES††



STRIPES – Dual Hood and Trunk



STRIPES – Single Hood and Side Hockey Stick



STRIPES – Fender

CONVERTIBLE TOP COLOURS



19T – Black

‡ Restrictions apply, see dealer for details.



67T – Beige‡