



2012 CHEVROLET
SILVERADO HD



DRIVING OUR WORLD FORWARD

THE ONLY PICKUP THAT MEASURES UP TO YOUR REAL-WORLD DEMANDS.

You're serious about your trucks. You're not swayed by manufacturers' claims and bragging rights. What you want is a truck that performs up to the real-world demands you place on it – and a truck you can depend on to keep performing to that high standard year after year. Sure you read the specs, the GVWRs, the power ratings. But just as importantly, you talk to your fellow truckers – you think back on your own experiences. You read the reviews. Then you put it all together – and there's your truck. The one that was completely engineered last year with vastly more power and hauling capacities. The one that has taken those gains from last year and continued to add to its capabilities setting a new standard for unsurpassed fifth-wheel towing capacity – an awesome 10,433 kg (23,000 lb.).* The truck that is known for its rock-solid dependability. The one and only 2012 Chevy Silverado 2500HD and 3500HD.

SILVERADO HD WINS IN HEAD-TO-HEAD TESTING

Who's bragging now? Silverado HD went up against Ford Super Duty and Ram HD in real-world head-to-head testing conducted by the independent research company AMCI Testing. The results erased all doubts about which heavy-duty pickup rules.

In 0-60 mph Acceleration tests, the Silverado 2500HD won in a time of 7.66 seconds, beating the F-250 (8.36 seconds) and Ram 2500 (9.41 seconds).

In 0-60 mph Acceleration tests with a 3000 lb. payload at 7% grade and 6000 ft. in altitude, Silverado 3500HD won in a time of 14.54 seconds, beating the F-350 (17.53 sec.) and Ram 3500 (20.43 sec.).

In Frame Strength Bumper Sag tests with a 2400 lb. payload and 400 lb. tongue weight, Silverado 2500HD sagged only 3.9 in., compared to 6.3 in. for the F-250 and 5.8 in. for the Ram 2500.

In the Frame Rigidity test measuring cab/bed misalignment, Silverado 2500HD measured just 0.25 in., beating the F-250 at 1.1 in.

In the Passing Ability test from 30-55 mph with a 9750 lb. trailer and 7% grade, Silverado 2500HD passed in 1020 ft., compared with 1174 ft. for the F-250 and 2886 ft. for the Ram 2500.

In the Brake Fade test, from 70-0 mph with a 3000 lb. payload, after 24 panic stops, the Silverado 3500HD showed zero brake fade, compared with the F-350's increased stopping distance of 75.7 ft.

In the Exhaust Brake test from 50 mph with a 16,500 lb. trailer and 7% downgrade, Silverado 3500HD won at 43.9 mph versus the F-350 at 56.1 mph.

Watch these tests for yourself by visiting: gm.ca/gm/english/vehicles/chevrolet/silverado-hd/feature-Head-to-Head?adv=107413

*Based on WardsAuto.com 2011 Large Pickup segmentation, 2011 Model Year competitive data for Ford Super Duty F-350 and Ram 3500 Heavy Duty pickup trucks and latest published information available at time of printing. Excludes other GM models.





Silverado 2500HD Crew Cab Standard Box LT 4x4, shown in Silver Ice Metallic with available equipment.





START WITH THE ONLY FULLY-BOXED FRAME.* END UP WITH UNSURPASSED TOWING CAPACITY.*

The bigger the load, the greater the demand it places on a truck's frame. So if you're looking for the reason why the new generation Silverado HD pickups can deliver an unsurpassed towing capacity of 10,433 kg (23,000 lb.)* and payloads that range all the way up to a massive 3273 kg (7215 lb.) you have to look at the frame. This frame

was completely re-engineered last year and is fully boxed from front to rear – no other heavy-duty pickup uses this exclusive configuration.* Even better, this rock-solid frame not only enables such mammoth hauling capacities – its rigidity allows for more precise suspension tuning. And that translates into a smoother ride.

SILVERADO HD HAULING CAPACITIES AT A GLANCE

Gross Vehicle Weight Rating –	up to 5897 kg (13,000 lb.)
Front Gross Axle Weight Rating –	up to 2722 kg (6000 lb.)
Maximum Payload:	
Silverado 2500HD:	1911 kg (4212 lb.)**
Silverado 3500HD SRW:	2098 kg (4625 lb.)**
Silverado 3500HD DRW:	3273 kg (7215 lb.)**
Maximum Trailering Capacities:	
Ball-hitch:	up to 8165 kg (18,000 lb.)
5th-wheel:	up to 10,433 kg (23,000 lb.)

* Based on WardsAuto.com 2011 Large Pickup segmentation, 2011 Model Year competitive data for Ford Super Duty F-350 and Ram 3500 Heavy Duty pickup trucks and latest published information available at time of printing. Excludes other GM models.

** Maximum payload capacity includes weight of driver, passengers, optional equipment and cargo.

STRONGER FRONT SUSPENSION

Large precision-forged control arms, in conjunction with the biggest steering gear ever in a Chevrolet HD, make the front suspension capable of handling enormous loads. The dual front jounce bumpers provide two load transfer paths to handle those loads. The large steering knuckle adds durability. The front suspension is now so strong that all 4x4 models can now be equipped with the available Snow Plow Prep Package. And the torsion bar suspension ride height can be adjusted when you attach or remove the snow plow – another segment-exclusive.*

STRONGER REAR SUSPENSION

The rear suspension was increased in size last year to help handle bigger payloads. Wider leaf springs and an asymmetric design increased wind-up stiffness, to reduce axle hop and to contribute to higher Gross Axle Weight Ratings.

FIFTH-WHEEL READY

The high-strength steel frame is designed to accommodate a fifth-wheel hitch or gooseneck hitch. The frame is also pre-drilled, making it that much easier to mount your choice of fifth-wheel.

FOUR-WHEEL DRIVE

Silverado HD's four-wheel-drive system uses an automatic disconnect mechanism in the front axle to provide "shift-on-the-fly" convenience, as well as the fuel efficiency gains associated with free-wheeling – without using locking hubs. Ford Super Duty pickups continue to rely on manual locking front hubs on their 4x4 models.

BETTER RIDE

You spend lots of time in your pickup. Driven by that fact, Chevrolet engineered a very comfortable ride into the new generation Silverado HDs. This was achieved through a variety of measures that help to isolate and absorb bumps. They include redesigned hydraulic body mounts on Extended and Crew Cab models, larger engine and transmission mounts, a longer wheelbase and a wider track. The stiffer frame also contributes to a smoother ride. But the real difference maker for Silverado HD is its true independent front suspension. It provides optimal ride and handling characteristics, while providing better tire-to-ground contact – while the Ford Super Duty still relies on a solid axle or twin I-beam front suspension. Yet another Silverado HD advantage.



The available
Duramax® 6.6L V8
Turbo Diesel

DURAMAX®. VORTEC™. REDEFINING HEAVY-DUTY POWER.

Gasoline vs. diesel power. Chevrolet understands that there are compelling reasons for choosing either. That's why the Silverado HD lineup offers not just powerful and durable gasoline and diesel powerplants – it offers two engine and transmission combinations that incorporate the latest in truck technology.



THE PROVEN CHOICE IN DIESEL POWER.

There is no substitute for experience. With more than 1.3 million Duramax® Diesel engines in operation, it has become the trusted name in diesel power. Last year, the Duramax® 6.6L V8 Turbo Diesel was significantly enhanced, delivering increased horsepower and torque – in addition to better fuel efficiency. The numbers are nothing short of staggering, with output measured at 397 horsepower and 765 lb.-ft. of torque. But what really sets the Duramax® apart is how it integrates with the Allison® 6-speed automatic transmission. Unlike competitors who offer beefed up versions of a light-duty truck transmission, the Allison® is the real deal – based on its tremendously durable medium-duty truck transmissions.

Durability Features of the Duramax® 6.6L V8 Turbo Diesel

- Common rail fuel injection technology
- 6-bolt per-cylinder head design
- Induction-hardened cylinder walls
- Five nodular iron main bearings
- Deep-skirt design adds strength
- Dedicated oil feed to turbocharger
- Surface-hardened forged-steel crankshaft
- Piston-cooling oil jets.

Benefits of the Duramax® 6.6L V8 Turbo Diesel

- Variable-vane turbocharger integrates with the Allison® 1000 transmission to facilitate smart exhaust braking
- The system's variable vane geometry adjusts automatically to different loads and grades, resulting in better grade descent control, while prolonging brake life
- Piezo injectors execute a cleaner burn, producing a smoother idle, lower combustion noise and less emissions output
- Double-pilot injection and a very strong engine block contribute to Duramax®'s well-earned reputation for quiet operation.

Diesel Emissions Fluid

The Duramax® Diesel performs selective catalytic reduction using Diesel Emissions Fluid (DEF) downstream in the exhaust. It reduces the amount of harmful Nitrogen Oxide (NOx) emissions by 63 percent – representing the latest technology available. DEF also allows for optimum fuel efficiency by increasing the range between Diesel Particulate Filter burn-off cycles to over 1100 km. The urea-based DEF solution is held in a separate storage tank and injected as a fine mist into the hot exhaust gases. The heat turns the urea into ammonia that, when combined with the catalytic converter, breaks down the NOx into harmless nitrogen gas and water vapour. The facts on DEF:

DEF refill is approximately every 8000 km.

DEF is non-toxic, non-polluting, non-hazardous and non-flammable.

DEF is readily available from a variety of suppliers.

THE “RUMBLE IN THE ROCKIES” PROVES THE SUPREMACY OF THE DURAMAX® VS. FORD’S POWER STROKE 6.7L V8:

“THE FORD F-350’S BEST TIME UP THE GRADE WAS 10 MINUTES, 46.8 SECONDS AT AN AVERAGE SPEED OF 42.41 MPH. THE TOP SPEED WAS 58.5 MPH... THE CHEVY SILVERADO WAS SIGNIFICANTLY FASTER. IT FINISHED MORE THAN TWO MINUTES AHEAD OF THE F-350, IN 8 MINUTES, 38.2 SECONDS. AVERAGE SPEED CRUISING UP TO 11,000 FEET WAS 53.63 MPH, 11.22 MPH FASTER ON AVERAGE THAN THE FORD.”

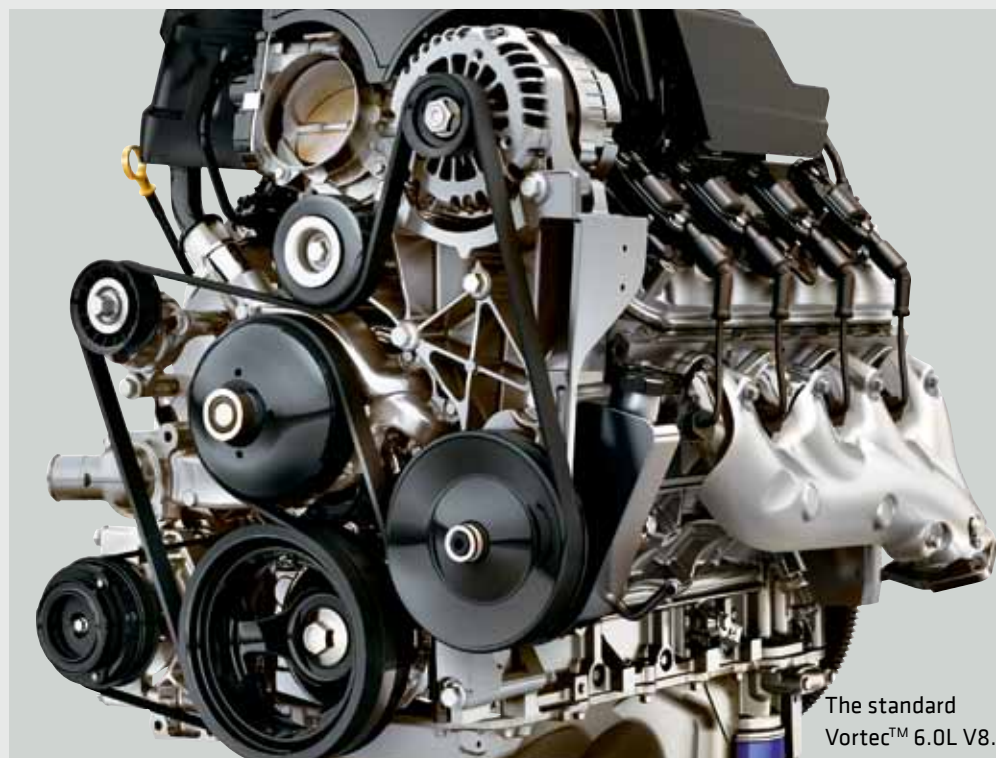
– PICKUPTRUCKS.COM, NOVEMBER 14, 2010

Read more about how these engines stack up.



Highlights of the Allison® 1000 6-Speed Automatic Transmission

- Based on medium-duty truck transmission
- Smart exhaust braking system
- Minimized spin loss and enhanced lock-up operation increase fuel efficiency
- Cruise grade braking
- Driver shift control with tap-up/tap-down range selection
- Tow/Haul mode improves towing performance and driver control on grades.



The standard Vortec™ 6.0L V8.

VORTEC™ V8. BIG POWER.

Vortec™ V8 engines have become synonymous with dependable and fuel-efficient gasoline power in trucks. The latest Gen IV Vortec™ 6.0L V8 is standard in all Silverado HDs and sets the standard for all gasoline-powered heavy-duty pickups. Chevrolet’s Vortec™ V8s are a compact design with a short durable chain driving a single camshaft that operates a single large intake and exhaust valve per cylinder. Compared to competitors’ overhead cam, multiple valve designs, the GM engines have fewer moving parts and are easier to service – major advantages over the long haul.

Cam-in-Block Variable Valve Timing:

The dual-equal cam phaser in the Vortec™ 6.0L V8 adjusts camshaft timing for all intake and exhaust valves. The engine control module responds to different driving demands and directs the phaser to either advance or retard cam timing. At low rpm, timing is advanced to increase torque – and for smoother idling. At high engine rpm, it typically retards timing to increase airflow and horsepower. Without the flexibility of variable valve timing, an engine performance is fixed, requiring a sacrifice of either horsepower, torque or fuel efficiency. In contrast, cam-in-block variable valve timing allows linear delivery of torque, with near peak levels achieved over a broad rpm range. It also enables high horsepower output, while reducing fuel consumption and emissions.

Highlights of the Vortec™ 6.0L V8:

- Deep-skirt design maximizes strength and minimizes vibration
- High-flow cylinder heads increase airflow in and out of the engine, increasing horsepower
- A returnless fuel injection system eliminates return lines, increasing performance while decreasing evaporative emissions
- Advanced Electronic Throttle Control (ETC) eliminates the mechanical link between the accelerator pedal and the throttle body, delivering better throttle response and reliability
- An advanced 58X crankshaft position encoder ensures accurate ignition timing across its operating range
- 6-bolt, cross-bolted main-bearing caps limit crankshaft flex and stiffen the engine’s structure
- A structural oil pan also stiffens the powertrain
- Heavy-duty cast stainless steel exhaust manifolds and inconel exhaust valves increase durability
- Features like floating-pin pistons reduce noise, vibration and harshness
- Long-life, heavy-duty timing chain
- Iridium-tipped spark plugs offer a number of advantages over platinum-tipped plugs, including a self-cleaning feature that results in reduced maintenance requirements
- E85 FlexFuel capability.

Highlights of the Hydra-Matic 6L90 6-Speed Automatic Transmission

- Unique output gearset enables a wider range of ratios than a conventional planetary gearset – for optimal fuel efficiency combined with excellent acceleration
- Ratios include a steep first gear – all the way to a very tall overdrive top gear for low-rpm highway cruising
- Two overdrive gears enhance fuel efficiency
- Specifically engineered for heavy-duty applications
- A 32-bit Transmission Control Module (TCM) monitors transmission performance and compensates for normal wear, ensuring that performance remains consistent
- A heavy-duty 300 mm torque converter ensures smooth shifting.

LOADED – WITH CONFIDENCE.

Driving a truck with a massive load in the cargo box or a 10,000 kg trailer behind you ups the ante when it comes to control. The new generation Silverado HD answers with brake components that were significantly upgraded last year to support dramatically increased loading capacities. The front rotors are now a full 14 inches (356 mm) in diameter. At the same time, advanced technologies were incorporated to enhance driver control, including the StabiliTrak® electronic stability control system and auto grade braking. And Trailer Sway Control is included on all 2500HD and single rear wheel 3500HD models. You can load up your Silverado HD not just with thousands of kilos of cargo – but also with the confidence that comes with Chevrolet engineering.



TRAILER SWAY CONTROL

StabiliTrak® is integrated with the new Trailer Sway Control, that is standard on all single rear wheel models. When the system detects your trailer beginning to sway, it automatically intervenes by applying individual brakes and reducing engine power.

AUTO GRADE BRAKING

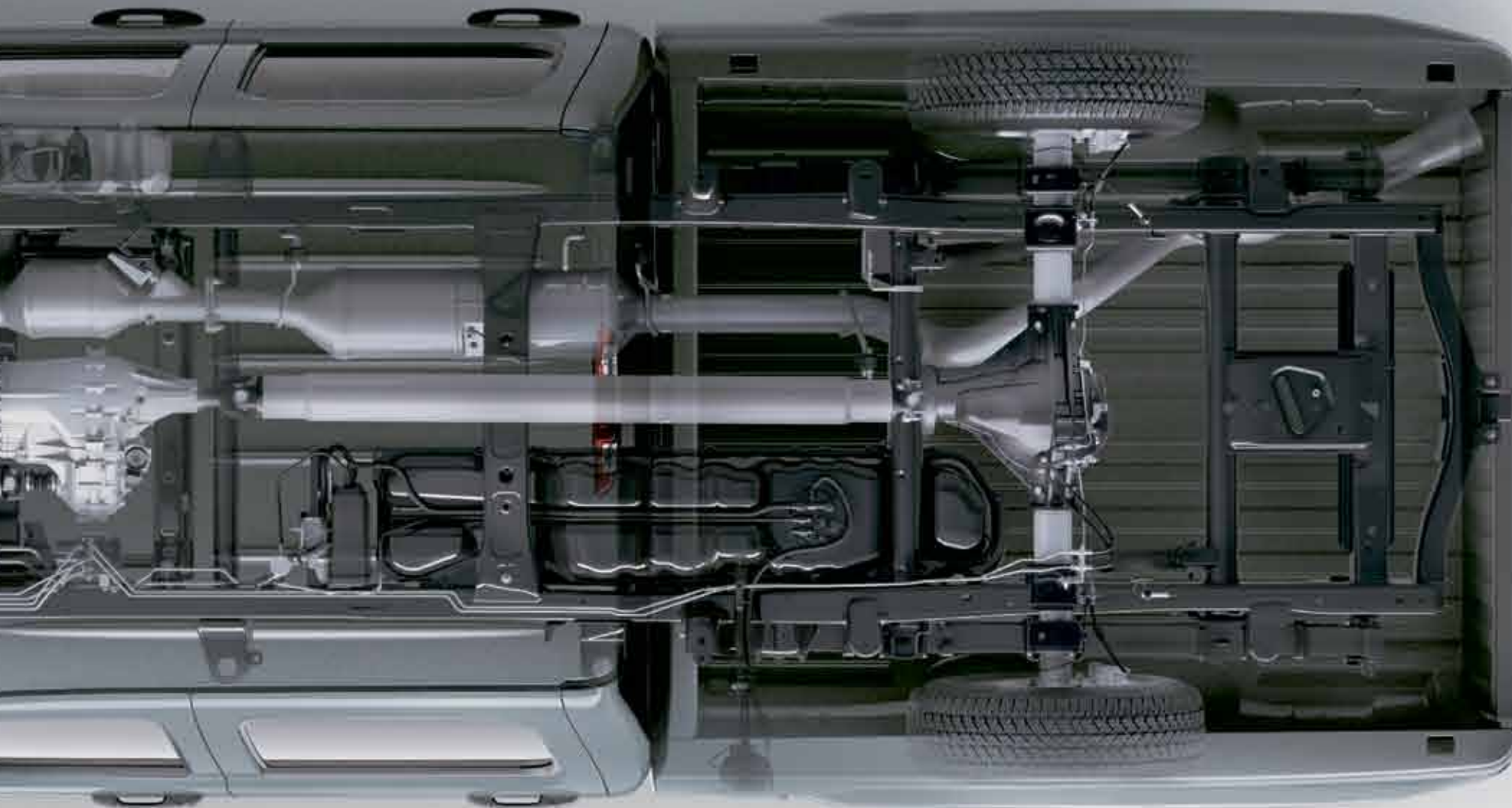
When you are descending a long, steep grade, Silverado HD's standard auto grade braking feature automatically downshifts to slow you down, without having to ride the brakes.

LARGE, STRONG BRAKES

The large rotors and calipers deliver short pedal travel and excellent pedal feel. In a panic braking situation, the Intelligent Brake Assist enables you to fully apply the brakes more quickly by pre-loading the calipers.

HILL HOLD ASSIST

Another way that Silverado HD makes driving your truck easier is with the Hill Hold Assist. It holds the truck stationary for about a second after you release the brake on a five percent or greater incline, enabling you to begin to accelerate before the truck starts to roll backward. Standard on all single rear wheel models.



INTEGRATED TRAILER BRAKE CONTROLLER

The available in-dash Integrated Trailer Brake Controller gives you precise control over the trailer's braking. The system also works with Hill Hold Assist by holding the trailer's brakes for about a second when you are accelerating uphill.

STABILITRAK®

The StabiliTrak® electronic stability control system enhances vehicle stability and control, particularly during emergency manoeuvres. It is standard on all single rear wheel HD models. This remarkable safety breakthrough has been proven to reduce the risk of a fatal single-vehicle crash by a remarkable 63 percent.*

HOW DOES STABILITRAK® WORK?

It compares your steering input with the truck's actual track, intervening automatically whenever it detects a loss of lateral traction (sideslip), understeer (plowing) or oversteer (fishtailing). It helps return the truck to your intended line by incrementally applying an individual brake and if necessary, by reducing engine torque. Proactive Roll Avoidance is included, reducing the truck's tendency to roll over during emergency braking.

LOCKING REAR DIFFERENTIAL

An industry-exclusive Eaton® locking rear differential is standard on Silverado LTZ, required on Duramax® Diesel equipped models and available on all other models. When one rear tire starts rotating approximately 100 rpm faster than the other, the differential locks up automatically. Both wheels are then driven at the same speed to help prevent you getting stuck.

* According to information published by the U.S. Department of Transportation's National Highway Traffic Safety Administration, July 2007

SILVERADO HD HAS YOUR NUMBER.

Finding the right truck means choosing one that offers the right capacity for your application. Silverado 2500HD and 3500HD pickups give you a wide range of configurations and capacities to answer your specific requirements. Find the one that's just right for you in the chart on the opposite page. If you're looking for maximum trailering capacity, you're looking in the right place because for 2012, Silverado 3500HD pickups with dual rear wheels have more than 1000 lb. in added fifth-wheel towing capacity. In fact, the 10,433 kg (23,000 lb.)* fifth-wheel rating is unsurpassed in its class.** Beyond capacities, Silverado HD are purpose engineered for the rigours



Silverado 2500HD Crew Cab Standard Box, shown in Black Granite Metallic with available equipment

of towing. Trailer Sway Control is standard on all single rear wheel models. It intervenes automatically when it detects trailer sway. In addition, an available Trailer Brake Controller integrates with the truck's sophisticated braking technologies. There's even a heavy-duty hitch that provides a super-strong link between truck and trailer. If you've got a trailer, Chevrolet's got your truck: Silverado HD.

* Maximum trailer weight ratings are calculated assuming base vehicle, except for any option(s) necessary to achieve the rating, plus driver. The weight of other optional equipment, passengers and cargo will reduce the maximum trailer weight your vehicle can tow. Refer to page 15 and ask your Chevy dealer for more information.

** Based on WardsAuto.com 2011 Large Pickup segmentation, 2011 Model Year competitive data for Ford Super Duty F-350 and Ram 3500 Heavy Duty pickup trucks and latest published information available at time of printing. Excludes other GM models.

SILVERADO HD WINS THE HEAVY-DUTY "RUMBLE IN THE ROCKIES."

It's one of the most trusted sources for information about trucks: PickupTrucks.com. And they decided to cut through the competitive claims in pickups and see who really triumphed in the most demanding real-world conditions. The challenge pitted the 2011 Chevrolet Silverado 3500 LT 4x4 Crew Cab with the Duramax® 6.6L Turbo Diesel V8 against the Ford F-350 XLT Crew Cab with the Power Stroke 6.7L V8. Both trucks were loaded to more than 95 percent of their GVWRs. The proving ground was none other than Interstate 70 from Dillon, Colorado to the top of the Eisenhower pass. ONE OF THE MOST INTIMIDATING STRETCHES OF ROAD IN THE COUNTRY grades top out at seven percent. And the winner is:

"IN SHORT, THE CHEVY SILVERADO'S PERFORMANCE SURPRISED EVERYONE, GIVEN FORD'S HIGHER STATED POWER FIGURES FOR THE 6.7-LITER POWER STROKE. FINISHING TWO MINUTES AHEAD OF THE SUPER DUTY OVER A 7.6-MILE GRADE AT MORE THAN 90 PERCENT GCWR IS NOTHING SHORT OF A DOMINANT SHOWING FOR CHEVY. THE EXHAUST BRAKE PERFORMANCE IS PERHAPS EVEN MORE TELLING AND WELCOME NEWS FOR FREQUENT HEAVY TOWERS... THE DURAMAX® APPEARS TO BE ABLE TO CLAMP DOWN MORE STRONGLY THAN THE POWER STROKE... THERE'S NO QUESTION THAT GM'S LATEST DIESEL PICKUPS ARE THE PERFORMANCE LEADERS IN THE CLASS."

- PICKUPTRUCKS.COM, NOVEMBER 14, 2010

Get the whole story - get the real low-down on these trucks by scanning the code on page 6.

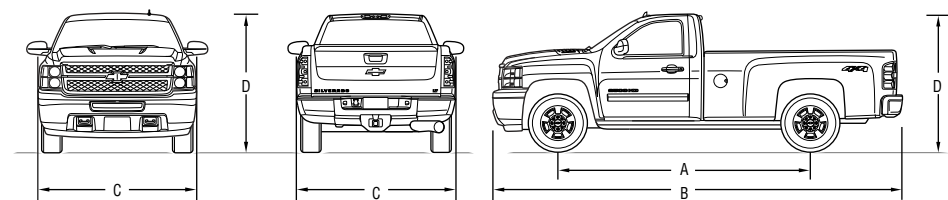


SILVERADO HD MODEL SELECTOR

SERIES	Cab Type	Model Number	Engine Type	Drivetrain	Box Length (ft. in.)	Wheelbase mm (in.)	GVWR Max. kg (lb.)	Payload Max. kg (lb.)	Gross Towing Capacity* Max. kg (lb.)
2500HD	Regular Cab	C20903	Vortec 6.0L Gas	2WD	8'	3396 (133.7)	4218 (9300)	1665 (3670)	6668 (14,700)
		C20903	Vortec 6.0L Gas	2WD	8'	3396 (133.7)	4536 (10,000)	1911 (4212)	4536 (10,000)
		C20903	Duramax 6.6L Diesel	2WD	8'	3396 (133.7)	4490 (9900)	1556 (3431)	8074 (17,800)
		K20903	Vortec 6.0L Gas	4x4	8'	3396 (133.7)	4309 (9500)	1605 (3538)	6532 (14,400)
		K20903	Duramax 6.6L Diesel	4x4	8'	3396 (133.7)	4490 (9900)	1397 (3079)	7938 (17,500)
	Extended Cab	C20753	Vortec 6.0L Gas	2WD	6'6"	3663 (144.2)	4309 (9500)	1575 (3473)	6486 (14,300)
		C20753	Duramax 6.6L Diesel	2WD	6'6"	3663 (144.2)	4536 (10,000)	1431 (3154)	7938 (17,500)
		K20753	Vortec 6.0L Gas	4x4	6'6"	3663 (144.2)	4309 (9500)	1447 (3189)	6350 (14,000)
		K20753	Duramax 6.6L Diesel	4x4	6'6"	3663 (144.2)	4536 (10,000)	1284 (2830)	7802 (17,200)
		C20953	Vortec 6.0L Gas	2WD	8'	4018 (158.2)	4309 (9500)	1523 (3358)	6441 (14,200)
		C20953	Duramax 6.6L Diesel	2WD	8'	4018 (158.2)	4536 (10,000)	1368 (3015)	7893 (17,400)
		K20953	Vortec 6.0L Gas	4x4	8'	4018 (158.2)	4309 (9500)	1486 (3275)	6305 (13,900)
		K20953	Duramax 6.6L Diesel	4x4	8'	4018 (158.2)	4536 (10,000)	1236 (2725)	7484 (16,500)
	Crew Cab	C20743	Vortec 6.0L Gas	2WD	6'6"	3904 (153.7)	4309 (9500)	1518 (3347)	6441 (14,200)
		C20743	Duramax 6.6L Diesel	2WD	6'6"	3904 (153.7)	4536 (10,000)	1378 (3037)	7893 (17,400)
		K20743	Vortec 6.0L Gas	4x4	6'6"	3904 (153.7)	4309 (9500)	1391 (3066)	6305 (13,900)
		K20743	Duramax 6.6L Diesel	4x4	6'6"	3904 (153.7)	4536 (10,000)	1227 (2706)	7575 (16,700)
		C20943	Vortec 6.0L Gas	2WD	8'	4260 (167.7)	4309 (9500)	1473 (3247)	6396 (14,100)
		C20943	Duramax 6.6L Diesel	2WD	8'	4260 (167.7)	4536 (10,000)	1330 (2932)	7802 (17,200)
		K20943	Vortec 6.0L Gas	4x4	8'	4260 (167.7)	4490 (9900)	1499 (3305)	6260 (13,800)
		K20943	Duramax 6.6L Diesel	4x4	8'	4260 (167.7)	4536 (10,000)	1158 (2552)	7076 (15,600)
3500HD-SRW**	Regular Cab	C30903	Vortec 6.0L Gas	2WD	8'	3396 (133.7)	4717 (10,400)	2098 (4625)	6577 (14,500)
		K30903	Vortec 6.0L Gas	4x4	8'	3396 (133.7)	4854 (10,700)	2091 (4609)	6441 (14,200)
		K30903	Duramax 6.6L Diesel	4x4	8'	3396 (133.7)	5171 (11,400)	2080 (4585)	7893 (17,400)
	Extended Cab	C30953	Vortec 6.0L Gas	2WD	8'	4018 (158.2)	4854 (10,700)	2015 (4443)	6350 (14,000)
		C30953	Duramax 6.6L Diesel	2WD	8'	4018 (158.2)	5080 (11,200)	2023 (4459)	7847 (17,300)
		K30953	Vortec 6.0L Gas	4x4	8'	4018 (158.2)	4990 (11,000)	2021 (4455)	6214 (13,700)
		K30953	Duramax 6.6L Diesel	4x4	8'	4018 (158.2)	5262 (11,600)	1948 (4295)	7666 (16,900)
	Crew Cab	C30743	Vortec 6.0L Gas	2WD	6'6"	3904 (153.7)	4763 (10,500)	1899 (4187)	6350 (14,000)
		C30743	Duramax 6.6L Diesel	2WD	6'6"	3904 (153.7)	5035 (11,100)	1834 (4044)	7802 (17,200)
		K30743	Vortec 6.0L Gas	4x4	6'6"	3904 (153.7)	4899 (10,800)	1900 (4190)	6214 (13,700)
		K30743	Duramax 6.6L Diesel	4x4	6'6"	3904 (153.7)	5216 (11,500)	1871 (4125)	7711 (17,000)
		C30943	Vortec 6.0L Gas	2WD	8'	4260 (167.7)	4854 (10,700)	1954 (4308)	6305 (13,900)
		C30943	Duramax 6.6L Diesel	2WD	8'	4260 (167.7)	5171 (11,400)	1935 (4266)	7847 (17,300)
		K30943	Vortec 6.0L Gas	4x4	8'	4260 (167.7)	4990 (11,000)	1935 (4266)	6169 (13,600)
		K30943	Duramax 6.6L Diesel	4x4	8'	4260 (167.7)	5262 (11,600)	1879 (4143)	7620 (16,800)
3500HD-DRW**	Regular Cab	C30903	Vortec 6.0L Gas	2WD	8'	3396 (133.7)	6078 (13,400)	3273 (7215)	6396 (14,100)
		K30903	Vortec 6.0L Gas	4x4	8'	3396 (133.7)	5806 (12,800)	2857 (6299)	6260 (13,800)
		K30903	Duramax 6.6L Diesel	4x4	8'	3396 (133.7)	5897 (13,000)	2620 (5775)	10,433 (23,000)
	Extended Cab	C30953	Vortec 6.0L Gas	2WD	8'	4018 (158.2)	5897 (13,000)	2867 (6321)	6169 (13,600)
		C30953	Duramax 6.6L Diesel	2WD	8'	4018 (158.2)	5897 (13,000)	2532 (5583)	10,342 (22,800)
		K30953	Vortec 6.0L Gas	4x4	8'	4018 (158.2)	5897 (13,000)	2737 (6033)	6078 (13,400)
		K30953	Duramax 6.6L Diesel	4x4	8'	4018 (158.2)	5897 (13,000)	2392 (5273)	10,251 (22,600)
	Crew Cab	C30943	Vortec 6.0L Gas	2WD	8'	4260 (167.7)	5897 (13,000)	2811 (6198)	6124 (13,500)
		C30943	Duramax 6.6L Diesel	2WD	8'	4260 (167.7)	5897 (13,000)	2414 (5321)	10,342 (22,800)
		K30943	Vortec 6.0L Gas	4x4	8'	4260 (167.7)	5897 (13,000)	2656 (5856)	5988 (13,200)
		K30943	Duramax 6.6L Diesel	4x4	8'	4260 (167.7)	5897 (13,000)	2328 (5133)	10,161 (22,400)

* Ratings are for models equipped with a 5th wheel (gooseneck) hitch ** SRW = Single Rear Wheels (credit option). DRW = Dual Rear Wheels (standard equipment).

DIMENSIONS



MODEL	A. Wheelbase mm (in.)	B. Overall Length mm (in.)
Regular Cab long box	3396 (133.7)	5715 (225.0)
Extended Cab standard box	3663 (144.2)	5857 (230.6)
Extended Cab long box	4018 (158.2)	6337 (249.5)
Crew Cab standard box	3904 (153.7)	6101 (240.2)
Crew Cab long box	4260 (167.7)	6581 (259.1)

	C. Width mm (in.)	D. Height mm (in.)
Single Rear Wheels	2032 (80.0) (max.)*	1989 (78.3) (max.)*
Dual Rear Wheels	2436 (95.9) (max.)*	1979 (77.9) (max.)*

* Excluding mirrors. † Depending on model selected.



Silverado LT instrument panel with available equipment.

AH, HOME AT LAST. WE'LL ALMOST.

If you look at the time you spend in your truck as a bit of sanctuary from the demands of your work life, you'll appreciate all the creature comforts and amenities jinside Silverado HD. You can take that one step further with the genuine luxury of the LTZ, with heated, leather-appointed front bucket seats and power 10-way seat adjusters. But, of course, being a Silverado HD, the cab also includes a series of features that

increase functionality. Take, for example, the standard OnStar®* system. It includes remote vehicle diagnostics that help you keep your truck operating in peak form, monitoring the status of such vital functions as the remaining Diesel Emissions Fluid. Your home on the road – Silverado HD.

* Visit onstar.ca for coverage map, details and system limitations. Services vary by model and conditions. OnStar® acts as a link to existing emergency providers



4



1



2



3

1. OnStar® and six months of the Directions and Connections Plan* and OnStar RemoteLink™ are included on all 2012 Silverado HD models. OnStar® enhances your safety with Automatic Crash Response, which automatically alerts OnStar® requesting help when a collision is detected. An Advisor then directs emergency help to your exact GPS location. OnStar® also adds to your security – if your truck is stolen, OnStar®'s GPS technology can help police locate it. And Turn-by-Turn Navigation elevates your convenience as the simplest and smartest navigation system available. Learn more at onstar.ca

2. The touch-screen of the navigation system radio performs double duty – it also is used to display the available rear vision camera, which enables you to see obstacles behind you when backing up and/or hitching to a trailer.

3. You have lots of things you like to keep close to you while on the road. Silverado HD LT and LTZ models offer oversized storage areas for those riding in the front row. The LT's lockable underseat storage area is shown here with its 12-volt electrical outlet.

4. Silverado 2500HD Crew Cab LTZ interior, shown in Light Cashmere with available equipment.

IT'S TIME TO ACCESSORIZE.

Now's the time to put your personal stamp on your Silverado HD with the addition of Chevrolet Accessories. They are the only accessories that were created as part of the Silverado HD's development process. That ensures they offer the same quality of fit, finish and function as the rest of your vehicle. They are backed by the 3-year/60,000 km New Vehicle Limited Warranty* and can be included in your lease or finance agreement. Ask your dealer for a complete list of the Chevrolet Accessories available for Silverado HD, or visit chevrolet.ca

* Whichever comes first, when permanently installed by the dealer at the time you purchased your new vehicle, or for the remainder of the New Vehicle Limited Warranty if installed after the time of your vehicle purchase, but no less than 12 months.

Chevrolet Accessories available for Silverado HD include:

- Cargo management system
- Sliding box divider
- Overhead utility rack
- Bedliner
- Hard folding tonneau cover
- Soft folding tonneau cover
- Underseat storage box
- Premium all-weather floor mats
- Tubular assist steps in 3-in. round or 6-in. oval (black or chrome)
- Chrome fuel door, door handles and mirror covers.



ACCESSORIES

SILVERADO HD TRAILERING

	BALL HITCH TRAILERING				FIFTH-WHEEL TRAILERING			
ENGINE	Vortec™ 6.0L V8 (L96)*		Duramax® 6.6L V8 Turbo Diesel (LML)		Vortec™ 6.0L V8 (L96)*		Duramax® 6.6L V8 Turbo Diesel (LMM)	
Horsepower @ rpm Torque (lb.-ft.) @ rpm	360 @ 5400 380 @ 4200		397 @ 3000 765 @ 1600		360 @ 5400 380 @ 4200		397 @ 3000 765 @ 1600	
AUTOMATIC TRANSMISSION	6-speed (6L90)		6-speed Allison®		6-speed (6L90)		6-speed Allison®	
MODEL	Max. Trailer Weight kg (lb.)	Axle Ratio	Max. Trailer Weight kg (lb.)	Axle Ratio	Max. Trailer Weight kg (lb.)	Axle Ratio	Max. Trailer Weight kg (lb.)	Axle Ratio
2500HD								
C20903 – Regular Cab 8' Long Box, 2WD	4627 (10,200) 5897 (13,000) 4536 (10,000)**	3.73 4.10 3.73	5897 (13,000)	3.73	4627 (10,200) 6668 (14,700) 4536 (10,000)**	3.73 4.10 3.73	8074 (17,800)	3.73
C20753 – Extended Cab 6' 6" Standard Box, 2WD	4445 (9800) 5897 (13,000)	3.73 4.10	5897 (13,000)	3.73	4445 (9800) 6486 (14,300)	3.73 4.10	7938 (17,500)	3.73
C20953 – Extended Cab 8' Long Box, 2WD	4400 (9700) 5897 (13,000)	3.73 4.10	5897 (13,000)	3.73	4400 (9700) 6441 (14,200)	3.73 4.10	7893 (17,400)	3.73
C20743 – Crew Cab 6' 6" Standard Box, 2WD	4400 (9700) 5897 (13,000)	3.73 4.10	5897 (13,000)	3.73	4400 (9700) 6441 (14,200)	3.73 4.10	7893 (17,400)	3.73
C20943 – Crew Cab 8' Long Box, 2WD	4355 (9600) 5897 (13,000)	3.73 4.10	5897 (13,000)	3.73	4355 (9600) 6396 (14,100)	3.73 4.10	7802 (17,200)	3.73
K20903 – Regular Cab 8' Long Box, 4x4	4491 (9900) 5897 (13,000)	3.73 4.10	5897 (13,000)	3.73	4491 (9900) 6532 (14,400)	3.73 4.10	7938 (17,500)	3.73
K20753 – Extended Cab 6' 6" Standard Box, 4x4	4309 (9500) 5897 (13,000)	3.73 4.10	5897 (13,000)	3.73	4309 (9500) 6350 (14,000)	3.73 4.10	4802 (17,200)	3.73
K20953 – Extended Cab 8' Long Box, 4x4	4264 (9400) 5897 (13,000)	3.73 4.10	5897 (13,000)	3.73	4264 (9400) 6305 (13,900)	3.73 4.10	7484 (16,500)	3.73
K20743 – Crew Cab 6' 6" Standard Box, 4x4	4264 (9400) 5897 (13,000)	3.73 4.10	5897 (13,000)	3.73	4264 (9400) 6305 (13,900)	3.73 4.10	7575 (16,700)	3.73
K20943 – Crew Cab 8' Long Box, 4x4	4218 (9300) 5897 (13,000)	3.73 4.10	5897 (13,000)	3.73	4218 (9300) 6260 (13,800)	3.73 4.10	7076 (15,600)	3.73
3500HD with Single Rear Wheels (SRW)								
C30903 – Regular Cab 8' Long Box, 2WD	5897 (13,000)	4.10			6577 (14,500)	4.10		
C30953 – Extended Cab 8' Long Box, 2WD	4309 (9500) 5897 (13,000)	3.73 4.10	5897 (13,000)	3.73	4309 (9500) 6350 (14,000)	3.73 4.10	7847 (17,300)	3.73
C30743 – Crew Cab 6' 6" Standard Box, 2WD	4309 (9500) 5897 (13,000)	3.73 4.10	5897 (13,000)	3.73	4309 (9500) 6350 (14,000)	3.73 4.10	7802 (17,200)	3.73
C30943 – Crew Cab 8' Long Box, 2WD	4264 (9400) 5897 (13,000)	3.73 4.10	5897 (13,000)	3.73	4264 (9400) 6305 (13,900)	3.73 4.10	7847 (17,300)	3.73
K30903 – Regular Cab 8' Long Box, 4x4	4400 (9700) 5897 (13,000)	3.73 4.10	5897 (13,000)	3.73	4400 (9700) 6441 (14,200)	3.73 4.10	7893 (17,400)	3.73
K30953 – Extended Cab 8' Long Box, 4x4	4173 (9200) 5897 (13,000)	3.73 4.10	5897 (13,000)	3.73	4173 (9200) 6214 (13,700)	3.73 4.10	7666 (16,900)	3.73
K30743 – Crew Cab 6' 6" Standard Box, 4x4	4173 (9200) 5897 (13,000)	3.73 4.10	5897 (13,000)	3.73	4173 (9200) 6214 (13,700)	3.73 4.10	7711 (17,000)	3.73
K30943 – Crew Cab 8' Long Box, 4x4	4128 (9100) 5897 (13,000)	3.73 4.10	5897 (13,000)	3.73	4128 (9100) 6169 (13,600)	3.73 4.10	7620 (16,800)	3.73
3500HD with Dual Rear Wheels (DRW)								
C30903 – Regular Cab 8' Long Box, 2WD	4355 (9600) 6396 (14,100)	3.73 4.10			4355 (9600) 6396 (14,100)	3.73 4.10		
C30953 – Extended Cab 8' Long Box, 2WD	4128 (9100) 6169 (13,600)	3.73 4.10	7484 (16,500)	3.73	4128 (9100) 6169 (13,600)	3.73 4.10	10,342 (22,800)	3.73
C30943 – Crew Cab 8' Long Box, 2WD	4082 (9000) 6124 (13,500)	3.73 4.10	7484 (16,500)	3.73	4082 (9000) 6124 (13,500)	3.73 4.10	10,342 (22,800)	3.73
K30903 – Regular Cab 8' Long Box, 4x4	4218 (9300) 6260 (13,800)	3.73 4.10	7258 (16,000)	3.73	4218 (9300) 6260 (13,800)	3.73 4.10	10,433 (23,000)	3.73
K30953 – Extended Cab 8' Long Box, 4x4	4037 (8900) 6078 (13,400)	3.73 4.10	8165 (18,000)	3.73	4037 (8900) 6078 (13,400)	3.73 4.10	10,251 (22,600)	3.73
K30943 – Crew Cab 8' Long Box, 4x4	3946 (8700) 5988 (13,200)	3.73 4.10	8165 (18,000)	3.73	3946 (8700) 5988 (13,200)	3.73 4.10	10,161 (22,400)	3.73

* Vortec™ 6.0L V8 (LY6) produces 322 hp @ 4400 rpm and 380 lb.-ft. of torque @ 4200 rpm on 3500HD models.

** C20903 with 4536 kg (10,000 lb.) GVWR package.

NOTES FOR 2500HD & 3500HD TRAILERING: • 2500HD and 3500HD models have a weight-carrying hitch limit of 3402 kg (7500 lb.) and require a weight-distributing hitch (or fifth-wheel) with trailer weights in excess of this limit. • Fifth-wheel kingpin loads are usually higher than ball hitch trailer tongue loads, so careful attention must be given to the trucks payload capacity and Rear Gross Axle Weight Rating (RGAWR). Subtract the tow vehicle's weight plus passenger and cargo weights from the

Gross Vehicle Weight Rating (GVWR) to determine the available payload and/or kingpin weight allowance. • Trailering kingpin weights should be 15-25% of the loaded trailer weight. • Trailering capacity may be limited by the tow vehicles ability to carry the hitch weight without exceeding the GVWR or RGAWR. • An Integrated Trailer Brake Controller (option JL1) is available in combination with the Trailering Special Equipment Package (option Z82). This facilitates hook-up of most electric trailer brakes.

SILVERADO HD STANDARD AND OPTIONAL EQUIPMENT

SAFETY AND SECURITY	WT	LT	LTZ
Airbags <ul style="list-style-type: none">– single stage, driver and front-passenger, frontal– seat-mounted side-impact, driver and right front passenger for thorax and pelvic protection – SRW models only– roof rail mounted side head curtain for all outboard seating positions with rollover sensor – SRW models only	S	S	S
OnStar® – In-Vehicle Communications and Assistance Service, includes 6 months of the Directions & Connections Plan with Turn-by-Turn Navigation* and OnStar RemoteLink™	S	S	S
Safety restraints <ul style="list-style-type: none">– LATCH (Lower Anchors and top Tethers for Children) – Ext. and Crew Cab only– top tether anchor (Regular Cab)	S S	S S	S –
Side Guard Door Beams	S	S	S
StabiliTrak® – electronic stability control system with proactive roll avoidance, electronic trailer sway control, intelligent brake assist, hill hold assist and traction control	S¹	S¹	S¹
Theft-deterrent system – electronic immobilizer	S	S	S

MECHANICAL	WT	LT	LTZ
Air cleaner – high capacity	S	S	S
Alternator <ul style="list-style-type: none">– 125 amp– 160 amp, for Vortec™ 6.0L V8– dual 125 amp, for Duramax® 6.6L Turbo Diesel	S 0 0	S 0 0	S 0 0
Battery – auxiliary, for Vortec™ 6.0L V8	0	0	0
Brakes – hydro-boost power, 4-wheel disc with anti-lock braking system (ABS)	S	S	S
Dual Rear Wheels (DRW) – 3500HD (except Crew Cab standard box models)	S	S	S
Single Rear Wheels (SRW); 3500HD – Includes Stabilitrak® Electronic Stability Control System. Deletes dual rear wheels, roof marker lights and chrome wheel covers and centre caps	0	0	0
Engine <ul style="list-style-type: none">– Vortec™ 6.0L V8 FlexFuel capable with Variable Valve Timing, Horsepower: 360 @ 5400 rpm with 2500HD;322 @ 4400 rpm with 3500HD; Torque: 380 lb.-ft. @ 4200 rpm– Duramax® 6.6L Turbo Diesel;Horsepower: 397 @ 3000 rpm; Torque: 765 lb.-ft. @ 1600 rpm. Includes dual 730 CCA batteries, block heater and cover for grille and front bumper opening for winter weather– Block heater (included with Duramax® 6.6L Turbo Diesel)	S 0 0	S 0 0	S 0 0
Heavy-Duty Enhanced Cooling Package – includes external transmission and engine oil coolers, heavy-duty radiator and electric cooling fan	S	S	S
Locking differential – rear (standard on all 3500HD models)	0	0	S
Silverado Z71 Plus Package – available on Extended and Crew Cab 4x4 models (3500HD requires Single Rear Wheels); includes bright sill plate and “Z71 Plus” decals, body-colour grille with chrome mesh insert, smooth body-colour front lower fascia, body-colour door handles and exterior mirrors, 18” polished aluminum wheels with LT 265/70R18 All Terrain tires, Z71 Off-Road Suspension Package and Trailering Special Equipment Package if not already equipped	–	0	0
Snow Plow Prep Provisions – includes 15 amp power for backup and roof emergency light, 160 amp alternator with Vortec™ 6.0L V8 engine; dual 125 amp alternators with Duramax® 6.6L V8 Turbo Diesel, forward lamp wiring harness, 85 mm (3.35”) access hole with grommet in front of dash panel, roof beacon lamp provisions with switch in the overhead console, instrument panel jumper wiring harness for electric brake controller, and skid plate package. Available on 4x4 models only	0	0	0
Steering – power recirculating ball	S	S	S
Suspension <ul style="list-style-type: none">– Z85 Handling/Trailering, torsion bar front suspension with heavy-duty monotube shock absorbers– Z71 Off-Road, includes off-road jounce bumpers, heavy-duty monotube shock absorbers, skid plates and Z71 decals	S –	S 0²	S 0²

MECHANICAL (CONTINUED)	WT	LT	LTZ
Trailering Special Equipment Package – includes weight-distributing trailer hitch platform with a 2.5-inch receiver with a 2-inch adapter. Also includes a 7-wire harness with independently fused trailering circuits mated to a 7-way sealed connector and 4 blunt-cut wires in the instrument panel for an aftermarket trailer brake controller (except when equipped with optional integrated trailer brake control) and a lead for a centre high-mounted stoplight	0	0	S
Trailer electric brake controller	0	0	S
Trailer wiring provisions – for camper or fifth wheel hitch, includes additional 8-way wiring harness to front of pickup box	0	0	0
Transfer case 4x4 models <ul style="list-style-type: none">– lever-operated, 2-speed part-time– 2-speed with electronic rotary dial	S –	– S	– S
Transmission – 6-speed automatic (model 6L90) with 2 overdrives, tap up/tap down shift control and Tow/Haul mode used on models equipped with the Vortec™ 6.0L V8 engine – Allison® 1000 Series 6-speed automatic with tap-shift range selection, Tow/Haul mode and engine grade braking is required with the 6.6L V8 Duramax® Diesel engine	S	S	S
Vehicle starter system – remote	–	0³	S

EXTERIOR	WT	LT	LTZ
Bumper <ul style="list-style-type: none">– front chrome– rear, chrome with step pad	S S	S S	S S
Cargo management pickup box – includes aluminum front and side C-channel rails in pickup box with 4 adjustable tie-down hooks	0	0	0
Front license plate provisions – included with vehicles shipped to British Columbia, Manitoba, New Brunswick, Ontario and Newfoundland	0	0	0
Glass <ul style="list-style-type: none">– Solar-Ray, tinted– deep-tinted, all windows behind front doors	S 0	S S	S S
Grille – moulded plastic with chrome surround	S	S	S
Lights <ul style="list-style-type: none">– dual halogen composite with automatic exterior light control and flash to pass feature. Cargo area lighting– fog lights– roof markers – 5 – 3500HD DRW	S – S	S 0³ S	S S S
LS Package – power door locks, remote keyless entry system, AM/FM stereo with MP3 compatible CD player (also includes auxiliary input jack, seek/scan, digital clock, auto tone control, speed-compensated volume, Radio Data System® (RDS) and TheftLock®) and up-level performance speakers in Extended and Crew Cab models, plus exterior “LS” badge. 2500HD models include 17” chrome-clad wheels with chrome centre caps, 3500HD with SRW include 18” polished aluminum wheels, 3500HD with DRW features 17” steel wheels with chrome appearance centre cap and wheel insert	0	–	–
LT Exterior Package – includes remote vehicle starter system, fog lights, universal home remote and auto-dimming interior rear-view mirror. 2500HD models also include power remote control exterior rear-view mirrors (heated, power folding, auto dimming, with integral turn signal indicators)	–	0	–
Mirrors <ul style="list-style-type: none">– manual folding, black – 2500HD models– manual folding, power remote control, heated, black – 2500HD models– power folding, power remote control, heated, integral turn signal indicators, electrochromic auto-dimming driver’s side and body-colour (not available on 3500 HD with dual rear wheels)– camper type with manual extend capability– deluxe wide-load, manual extending and folding, heated, integrated turn signals with lower convex spotter, black	S – – 0⁴ –	– S – – 0⁴	– – S – 0⁴
Mouldings – bodyside, body-colour (except 3500HD Reg. Cab models)	–	S	S
Rear vision camera – reverse assist for parking or trailer towing (includes interior rear-view mirror display) – not available on Reg. Cab models	–	0	0
Recovery hooks – two, front	S	S	S
Skid plates – off-road, includes shields for engine, transmission, transfer case and front differential, included with Z71 suspension (4x4 only)	0	0	0
Sunroof – power, with express open, includes universal home remote and short overhead console (Ext. and Crew Cab)	–	0⁵	0

EXTERIOR (CONTINUED)	WT	LT	LTZ
Tailgate package – includes lockable EZ lift tailgate	–	0	0
Tire – spare tire carrier – locking, rear underbody, winch-mounted	S	S	S
Tires <ul style="list-style-type: none">– 2500HD – LT245/75R17 all-season**– 2500HD and 3500HD SRW – LT265/70R18 all-season**– 2500HD – LT265/60R20 all-terrain– 2500HD – LT265/70R17 all-terrain– 2500HD and 3500HD SRW – LT265/70R18 all-terrain– 3500HD DRW – LT235/80R-17 highway**– 3500HD DRW – LT235/80R17 all-terrain	S 0⁶ – 0 0 S 0	S 0⁶ 0 0 0 S 0	– S 0 – 0 S 0
Ultrasonic rear parking assist – rear obstacle detection system with audible warning, included with available Safety and LTZ Convenience Package on Extended and Crew Cab	–	0	0
Wheels <ul style="list-style-type: none">– 2500HD – 17” painted steel (A)– 2500HD – 17” chrome-clad steel (B)– 2500HD – 17” machined aluminum (D)– 2500HD – 20” polished forged-aluminum (F)– 2500HD and 3500HD SRW – 18” painted steel (C)– 2500HD and 3500HD SRW – 18” polished forged-aluminum (E)– 3500HD DRW – 17” painted steel– 3500HD DRW – 17” painted steel with chrome appearance centre cap and wheel insert (G)– 3500HD DRW – 17” polished forged-aluminum – crew cab (H)	S 0 – – 0⁶ – S 0⁷ –	– – S 0 – 0⁶ – – S –	– – – 0 – S – – S
Windshield wipers – variable delay (intermittent), flat-blade with wet arm washers	S	S	S

INTERIOR	WT	LT	LTZ
Climate control <ul style="list-style-type: none">– single-zone air conditioning, manual– automatic, dual-zone	S –	S 0⁸	– S
Console – overhead deluxe	S	S	S
Cruise control	S	S	S
Defogger – electric rear-window	0	0	S
Door locks <ul style="list-style-type: none">– power, programmable with lock-out protection (standard on all Crew Cabs)– Keyless entry system – programmable remote, includes 2 extended range transmitters with panic button	0⁷ 0⁷	S S	S S
Floor covering <ul style="list-style-type: none">– vinyl, graphite rubberized coating– colour-keyed carpeting and removable vinyl floor mats (includes rear mats in Ext. and Crew Cab)	S 0	0 S	– S
Instrument panel <ul style="list-style-type: none">– standard with upper and lower glove compartments– premium with single glove compartment	S –	S –	– S
Instrumentation <ul style="list-style-type: none">– analogue gauge cluster with speedometer, tachometer, engine temperature, fuel level, voltmeter and oil pressure– Driver Information Centre (DIC): comprehensive multi-language system with trip odometer, engine hour meter, transmission temperature, GM Oil Life Monitoring System, tire pressure monitoring system (except 3500HD DRW models) and visual and audible reminders/warnings– Compass and exterior temperature display added to above– four DIC menu buttons located on the instrument panel provide additional vehicle information and permit customization features such as automatic locking/unlocking, seat position recall, exit lighting and remote door lock/unlock	S – – –	S S S S	S – – S
LT Interior Package – includes AM/FM stereo with MP3 compatible CD player, Bluetooth® connectivity, steering wheel-mounted audio system controls, power 6-way driver’s seat adjuster with 40/20/40 split-bench and dual-zone automatic climate controls on Extended and Crew Cab models	–	0	–
LTZ Convenience Package – includes universal home remote, power adjustable pedals and ultrasonic rear parking assist	–	–	0
Mirror – includes auto-dimming feature	–	–	S
Safety Package – includes power adjustable pedals and ultrasonic rear parking assist (Extended and Crew Cab models)	–	0	–

INTERIOR (CONTINUED)	WT	LT	LTZ
Steering column – tilt adjustable	S	S	S
Steering wheel			
– leather-wrapped	0 ⁹	S	S
– audio system controls	0 ⁹	0 ⁸	S
Sunshades			
– LH and RH, padded; colour-keyed cloth; LH with pocket, RH with visor mirror	S	–	–
– LH and RH, padded; colour-keyed cloth with illuminated visor mirrors	–	S	S
Universal home remote – 3-channel transmitter	–	0	0
Window – rear sliding, power operated (Ext. and Crew Cab)	–	0 ¹⁰	0 ¹⁰
Windows			
– front, power with passenger lock-out feature	–	S	S
– front, includes driver express-down feature	–	S	–
– front, includes driver and passenger express-down feature	–	–	S
– rear, fixed side (Ext. Cab)	S	–	–
– rear, manual drop glass (Crew Cab)	S	–	–
– rear, power drop glass (Ext. and Crew Cab)	–	S	S
SEATS			
Front 40/20/40 split-bench with driver and front-passenger manual recliners, centre fold-down armrest, vinyl or cloth trim. Includes driver manual lumbar adjuster when cloth trim specified	S	–	–
Front 40/20/40 split-bench, driver and front-passenger manual recliners, driver manual lumbar adjuster, centre fold-down armrest with storage, lockable storage compartment in centre seat cushion (includes auxiliary power outlet), seatback storage pockets on Ext. and Crew Cab models. Available in Premium cloth or with leather seat inserts. Rear folding seat includes vinyl trim when ordered with leather seat inserts	–	S	–
Seat adjuster – power 6-way driver seat on 40/20/40 split-bench (required with available leather seat inserts)	–	0	–
Front bucket seats, includes power 6-way driver and front-passenger seat adjusters, front passenger manual recliner, driver and front passenger manual lumbar adjuster, centre console and seatback storage pockets. Available in Premium cloth or with leather-appointed seating. Rear folding seat includes vinyl trim when ordered with leather inserts	–	0	–
Front bucket seats with leather seat inserts, includes power 10-way driver and front-passenger seat adjusters (including power 2-way lumbar adjuster), heated seat cushions and seatbacks, 2-position driver memory, centre floor console and seatback storage pockets. Rear folding seat includes vinyl trim	–	–	S
Rear stadium-style fold-up seat on Ext. Cab – 60/40 split-folding on LT and LTZ	S	S	S
Rear stadium-style fold-up seat on Crew Cab – 60/40 split-folding	S	S	S

ENTERTAINMENT	WT	LT	LTZ
AM/FM stereo with seek/scan and digital clock	S	–	–
AM/FM stereo, CD player with MP3 playback capability, auxiliary audio input jack, seek/scan, digital clock, auto tone control, speed-compensated volume, TheftLock® and Radio Data System® (RDS)	0	S	–
Includes features of above sound system plus USB/iPod®/MP3 input jack and 36 cross-band presets	–	0	S
AM/FM stereo, 6-disc CD changer with MP3 playback capability, auxiliary audio input jack, seek/scan, digital clock, auto tone control, speed-compensated volume, TheftLock®, Radio Data System® (RDS), USB port, Bose® Premium sound system with subwoofer and 36 cross-band presets	–	0	0
AM/FM stereo, CD/DVD player upper slot/CD player lower slot, both with MP3 playback capability, auxiliary audio input jack, seek/scan, digital clock, auto tone control, speed-compensated volume, TheftLock®, Radio Data System® (RDS), USB port and Bose® Premium sound system with subwoofer. Includes Rear Seat Entertainment Package with single DVD player, overhead display, remote control, 2 sets of wireless headphones and auxiliary audio/video input jacks	–	–	0 ¹¹
AM/FM stereo with Navigation, CD player with MP3/WMA playback capability, auxiliary audio input jack, seek/scan, digital clock, auto tone control, speed-compensated volume, TheftLock®, Radio Data System® (RDS), USB port and Bose® Premium sound system with subwoofer. Includes 178 mm (7-inch) touch screen interface display, enhanced DVD based navigation system, voice-based commands, points-of-interest, 80 GB hard drive with 50 GB for media file downloading, time shifting up to 20 minutes and rear vision camera with display in navigation screen – Extended and Crew Cab models††	–	–	0 ¹¹
Rear Seat Entertainment Package can be added to above sound system. Includes single DVD player, overhead display, remote control, 2 sets of wireless headphones and auxiliary audio/video input jacks. Available on Crew Cabs only	–	–	0 ¹¹
SiriusXM Satellite Radio™†	0	0	S
Bluetooth® – hands-free phone connectivity	0 ⁹	0 ⁸	S
Bluetooth® Convenience Package – includes Bluetooth® connectivity and leather-wrapped steering wheel with audio system controls	0	0	–
4-speaker sound system (Reg. Cab models)	S	S	–
6-speaker up-level performance sound system (Ext. and Crew Cab models)	S	S	–
Bose® Premium sound system with subwoofer (Ext. and Crew Cab models)	–	0	S

S – Standard.

0 – Optional individually or in combination with other optional equipment.

1 – Included with Single Rear Wheel (SRW) models only.

2 – Available with Single Rear Wheels (SRW) only. Requires automatic locking rear differential.

3 – Included with available LT Exterior Package.

4 – Standard on 3500HD DRW models.

5 – Requires available LT Exterior Package.

6 – Standard on 3500HD SRW Crew Cab std. box.

7 – Included with available LS Package.


8 – Included with available LT Interior Package.

9 – Requires Bluetooth® Convenience Package.

10 – Deletes electric rear-window defogger, when specified.

11 – Deletes in-dash 6-disc CD changer.

* Visit onstar.ca for coverage map, details and systems limitations. Services vary by model and conditions.

** All-season tires may not satisfy winter tire requirements in all regions of the country. Tires specifically designed for severe winter conditions and marked with the "winter tire" symbol  may be required during certain months or in certain regions. Contact your Provincial, Municipal or local road authority for information regarding which tires are required in your particular area.

† Available in 10 Canadian provinces and the 48 contiguous United States. Monthly subscription sold separately after trial period. Visit xmradio.ca for details.

†† At time of printing, detailed map coverage is available for most major urban areas of the United States and for certain metropolitan areas of Canada (Vancouver, Calgary, Edmonton, Winnipeg, Windsor, London, Toronto, Ottawa, Montreal, Quebec City and Halifax). Coverage is limited outside these areas.

WHEELS



A – 17" painted steel (2500HD)

B – 17" chrome-clad steel (2500HD)

C – 18" painted steel (2500HD/3500HD Single Rear Wheel)

D – 17" machined aluminum (2500HD)

E – 18" polished forged-aluminum (2500HD/3500HD Single Rear Wheel)

F – 20" polished forged-aluminum (2500HD)

G – 17" painted steel with chrome appearance centre cap and wheel insert (3500HD Dual Rear Wheel)

H – 17" polished forged-aluminum (3500HD Dual Rear Wheel Crew Cab LTZ)

WARRANTY

IT ISN'T FINE PRINT – IT'S A COMMITMENT.

Chevrolet builds its cars and trucks for the way you use them and drive them. But that's only step one. Every Chevrolet is also built to continue to live up to the highest standards, year after year. You can take added peace of mind in knowing that every Chevrolet is also backed by the best coverage in Canada:

- 3-year/60,000 km New Vehicle Limited Warranty*
- 5-year/160,000 km Powertrain Component Limited Warranty, with \$0 deductible on repairs and the warranty is fully transferable at no charge*
- 5-year/160,000 km Courtesy Transportation*
- 5-year/160,000 km 24/7 Roadside Assistance*
- 6-year/160,000 km rust-through perforation coverage*
- 8-year/130,000 km coverage on catalytic converters and powertrain control modules (PCMs)*.

*Whichever comes first. Conditions and limitations apply, see dealer for details.

OTHER OWNERSHIP PRIVILEGES AND PROGRAMS:**

- **GM Protection Plan (GMPP)** – the only extended service plan backed by the resources and commitment of General Motors, GMPP may be purchased at the time of sale or subsequently during the New Vehicle Limited Warranty period.
- **GM Goodwrench Service** – with GM-certified technicians and GM-approved parts, nobody knows your GM vehicle better.
- **Chevrolet Owner Centre** – as an owner, take advantage of the Chevrolet Owner Centre. This online owner's destination gives you access to coupons, contests, current offers and the latest driving and maintenance tips. Find out more at [ChevroletOwner.ca](#)

**Conditions and limitations apply.

TO HELP YOU PURCHASE OR LEASE A NEW VEHICLE:

- **Purchase Financing and Leasing** – on the spot financing, see your dealer for full details¹.
- **GM Student Bonus Program** – students or recent graduates of high school, college or university** may be entitled to receive a Student Bonus vehicle redemption allowance of \$500 or \$750¹¹ (tax inclusive) (purchased vehicle dependant) to use towards the purchase, lease or finance of one eligible new Chevrolet vehicle.
- **The GM Card** - GM cardholders may redeem up to \$3500 GM Card® Earnings (subject to Vehicle Redemption Allowances) toward the Total Purchase Price on eligible new GM vehicles¹¹. For full program details please visit [thegmcard.ca](#)

† Subject to eligibility. †† Program subject to change. **Conditions and limitations apply.

INFORMATION RESOURCES:

You can find more information about these programs from your GM dealer, or at these information centres:

- The GM website at [gm.ca](#)
- The GM Customer Care Centre at **1-800-GM-DRIVE (1-800-463-7483 or 1-800-263-3830** for TDD users).

A WORD ABOUT THIS BROCHURE

Some of the equipment shown or described throughout this brochure may be available at extra cost. We have tried to make this brochure comprehensive and factual. We reserve the right, however, to make changes at any time, without notice, in prices, colours, materials, equipment, specifications, models and availability. Specifications, dimensions, measurements, ratings and other numbers in this brochure and other printed materials provided at the dealership or affixed to vehicles are approximates based upon design and engineering drawings and prototypes and laboratory tests. Your vehicle may differ due to variations in manufacture and equipment. Since some information may have been adapted since the time of the printing, please check with your GM dealer for complete details. General Motors of Canada Limited reserves the right to lengthen or shorten the model year for any product, for any reason, or to start and end model years at different times.

A WORD ABOUT ASSEMBLY

GM vehicles are equipped with engines and components produced and assembled by different operating units of General Motors, its subsidiaries and suppliers and these engines and components may change or be obtained from different sources from time to time. All such engines and components are approved for use in GM vehicles. Certain equipment ordered may be unavailable at the time of assembly and we suggest that you verify that your vehicle includes the equipment you ordered, or if there are changes, that they are acceptable to you.

TRADEMARKS

The marks appearing in this brochure including, but not limited to: General Motors, GM, Chevrolet, the Chevrolet emblem, Silverado, Z71 and their respective logos, emblems, slogans and vehicle model names and body designs; and other marks such as Allison, Duramax, StabiliTrak and Vortec are trademarks of General Motors and/or General Motors of Canada Limited, its subsidiaries, affiliates or licensors.

OnStar and the OnStar emblem are registered trademarks and OnStar RemoteLink is a trademark of OnStar, LLC.

TheftLock is a registered trademark of Delphi Technologies, Inc.

The SiriusXM name and related logos are trademarks of SiriusXM Canada, Canadian Satellite Radio Inc.

Radio Data System (RDS) is a registered trademark of the U.S. National Association of Broadcasters.

Bluetooth is a registered trademark of Bluetooth SIG Inc.

Bose is a registered trademark of the Bose Corporation.

Apple, iPhone and iPod are trademarks of Apple Computer Inc. registered in the U.S. and other countries.

Eaton is a registered trademark of Eaton Corporation.

Facebook is a trademark of Facebook, Inc.

Twitter is a trademark of Twitter, Inc.

YouTube and Android mobile technology platform are trademarks of Google, Inc.

COPYRIGHT

©Copyright 2011 General Motors of Canada Limited. All Rights Reserved. All text, images, graphics, and other materials in this brochure are subject to the copyright and other intellectual property rights of General Motors and/or General Motors of Canada Limited. These materials may not be reproduced, distributed or modified without the express written permission of General Motors and/or General Motors of Canada Limited.

INTERIOR FABRICS

Cloth



88V – Dark Titanium

Premium Cloth



19C – Ebony

Leather

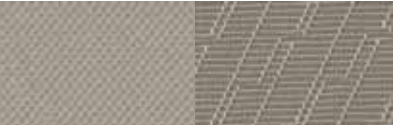


193 – Ebony

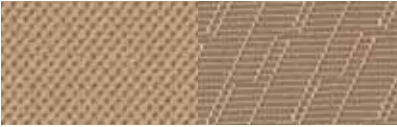
Vinyl



88B – Dark Titanium



83C – Light Titanium with Dark Titanium Accents



33C – Light Cashmere with Dark Cashmere Accents



833/836 – Light Titanium with Dark Titanium Accents



333/336 – Light Cashmere with Dark Cashmere Accents

EXTERIOR/INTERIOR COLOUR COMPATIBILITY

▼ Exterior	Interior Model ►	Ebony – 19 LT/LTZ	Light Cashmere with Dark Cashmere accents – 33 LT/LTZ	Light Titanium with Dark Titanium Accents – 83 LT/LTZ	Dark Titanium – 88 WT
16 – Greystone Metallic		•	•	•	•
37 – Imperial Blue Metallic¹		•	•	•	•
41 – Black		•	•	•	•
46 – Blue Granite Metallic¹		•	•	•	•
50 – Summit White		•	•	•	•
58 – Black Granite Metallic¹		•	•	•	•
74 – Victory Red		•	•	•	•
GAN – Silver Ice Metallic		•	•	•	•
GHA – Mocha Steel Metallic¹		•	•	•	•

1 – Colour not available with Silverado Z71 Plus Package.

EXTERIOR COLOURS



16 – Greystone Metallic



37 – Imperial Blue Metallic¹



41 – Black



46 – Blue Granite Metallic¹



50 – Summit White



58 – Black Granite Metallic¹



74 – Victory Red



GAN – Silver Ice Metallic



GHA – Mocha Steel Metallic¹

¹ – Colour not available with Silverado Z71 Plus Package.
Due to the limitations of the printing process, the colours shown may differ slightly from the actual colour. For more accurate colour samples, ask your sales consultant to see the dealer showroom colour display. Exterior colours may be subject to changes during the 2012 model year, please check with your sales consultant or visit chevrolet.ca for latest colour availability on Silverado HD.