

TACOMA

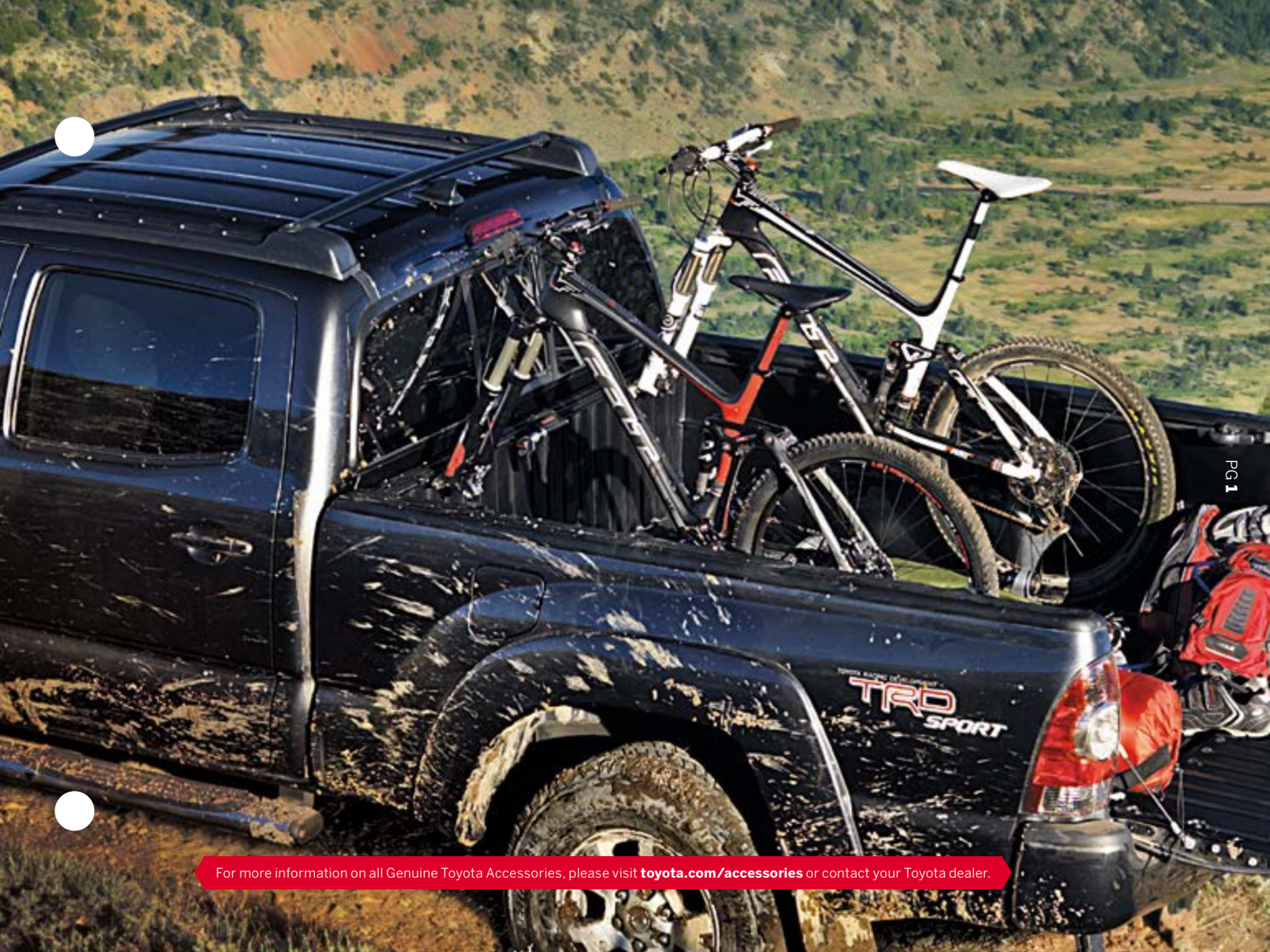
2014 ACCESSORIES



VERSATILE. RUGGED. FUN. PICK ONE (OR ALL).

There are a lot of reasons why Tacoma is the best-selling compact truck in the U.S. It delivers a unique mix of ability and versatility, teamed with the right amount of comfort and convenience. It's also the perfect platform to create the truck of your dreams. Make that dream a reality with Genuine Toyota Accessories. Each one is designed to deliver the same level of quality, fit and finish that attracted you to the Tacoma in the first place.





For more information on all Genuine Toyota Accessories, please visit toyota.com/accessories or contact your Toyota dealer.

EXTERIOR

With its aggressive front end styling, Tacoma is clearly looking to start something. Like a trip to the lake. Or hauling your dirt bikes to the trails. And with Genuine Toyota Accessories, you have the ability to personalize your Tacoma to make it more rugged... more stylish... or a combination of the two. It's all up to you.



FRONT SKID PLATE

Stuff happens. You don't mean to, but sometimes the front of your Tacoma has to handle an obstacle or two. That's why a front skid plate is the perfect addition:

- 1/8-in. stamped, silver powder-coated aluminum skid plate helps protect from rocks and debris
- Black powder-coated steel brackets offer easy, no-drill installation to existing frame mounts
- Includes cutouts for unobstructed access to all maintenance points and vehicle tow hooks

ALLOY WHEEL LOCKS

Peace of mind: These precision-machined, precisely balanced alloy wheel locks have one purpose – to keep your Tacoma's wheels secure:

- Triple nickel chrome plating adds visual appeal
- Unique machined security pattern keeps your wheels secure
- Weight-matched to the stock lug nuts so you don't have to rebalance the wheels



ROOF RACK

Need more storage? Solve the challenge by adding a roof rack to Tacoma Double Cab models:

- Low-profile design integrates with Tacoma's styling
- Cross bars can be locked in place, or stowed in line with the roof rails when not in use
- Load capacity of 75-lbs.



▶ **BALL MOUNT**

Like to tow? What do you haul? Dirt bikes? Watercraft? A little bit of everything? Well then, this Toyota ball mount^{1,2} is the perfect addition to your Tacoma:

- Ball placement provides precise drop/rise to help maintain optimum vehicle departure angle
- Powder coating helps protect against UV rays while maintaining a “like-new” appearance
- Tested in real world conditions to help ensure the quality and durability of the entire towing system
- Meets or exceeds industry towing standards
- Trailer ball sold separately

▶ **TRAILER BALL**

This Genuine Toyota trailer ball^{1,2} is specifically designed to work in harmony with the Toyota ball mount:

- Available in 2 5/16-in. or 2-in. diameters
- Cold-forged steel construction for superior strength
- Includes built-in wrench flats for ease of installation and torquing
- Ball mount sold separately



▶ **TOW HITCH RECEIVER**

For the long haul – this Class III tow hitch receiver^{1,2} is precisely designed for Tacoma:

- Up to 5,000-lb. towing capacity
- 16 connection points to the frame help distribute towing force while reducing stress and preserving the integrity of the Tacoma
- No-drill installation maintains the structural integrity of Tacoma’s frame
- Extensive on- and off-road testing ensures real world functionality and durability
- Ball mount and trailer ball sold separately

BAJA 16-IN. ALLOY WHEEL

Toyota trucks and off-road racing are tough. One of the toughest races of them all is the infamous Baja 1000. Give your Tacoma some of that toughness with a set of 6-spoke Baja alloy wheels³:

- Lighter than comparable steel wheels - helps heat dissipation, enhances handling and improves braking performance
- Provide the proper weight, offset and brake clearance for a perfect fit
- Available in two colors: black and graphite



BEDSTEP®

Step up! The best way to climb up into your Tacoma's bed is by adding a BedStep[®]:

- Convenient, secure stepping platform
- Hands-free operation – works with the touch of your foot
- Ribbed, glass-reinforced nylon, nonskid step
- High-strength, die-cast aluminum construction supports up to 300 lbs.
- Works with tailgate up or down
- Stores discreetly under rear bumper

7-PIN TO 4-PIN ADAPTER

For a lot of Tacoma owners, the fun begins once you hook up your trailer. To make that task easy and effortless, this adapter converts a 7-pin connector to a 4-pin connector for towing smaller loads:

- Designed specifically for the Toyota wiring harness
- Eliminates the need to rewire the trailer or purchase additional harnesses
- Helps protect Tacoma's electrical circuits



HOOD PROTECTOR

Style and protection – this hood protector guards Tacoma's hood and windshield from damage that can occur during life's everyday adventures:

- Durable, impact-resistant polycarbonate construction
- Simple, no-drill installation



PAINT PROTECTION FILM

You might not be able to see it, but the protection from Genuine Toyota paint protection film* is priceless:

- Durable, nearly invisible urethane film helps maintain a like-new appearance
- Helps protect paint from sand, stones and other road debris
- Paint protection film is available at your Toyota dealership in kits for the hood/fenders and the front bumper (kits sold separately)

PROTECTED

EXHAUST TIP

The finishing touch:

- Polished stainless steel exhaust tip is the perfect exterior addition to your Tacoma
- Durable corrosion-resistant, double-walled 304 stainless steel construction
- Easy bolt-on installation – no cutting, drilling or welding



SPARE TIRE LOCK

Add an extra layer of security to your spare tire with a precision machined spare tire lock:

- Zinc-nickel plated hardened steel construction for long-term durability
- Lock is installed on the spare tire lowering screw
- Key attaches to the crank-down tool in Tacoma's tool kit



◀ **BED MAT**

You work hard. You play hard. That's why your truck bed⁵ needs heavy-duty protection:

- Custom-molded to Tacoma's bed shape
- Pebble texture helps keep cargo from sliding
- Raised ribs for easy loading and unloading of cargo
- Knobby underside promotes drainage to keep truck bed dry, helping prevent rust and mildew



◀ **CARGO NET - EXTERIOR**

Avoid storage wars – this convenient cargo net⁵ helps prevent lighter gear from sliding around:

- Durable elastic mesh construction
- Envelope-style design installs or detaches in seconds
- Folds flat for storage when not in use



BED NET

The key here is containment – this bed net[®] helps secure your tools and gear:

- Accommodates various shapes and sizes to contain cargo during normal driving conditions
- Durable nylon netting is stain resistant so it maintains a “like-new” appearance
- Easily attaches to the truck bed
- Folds flat when not in use

A close-up, low-angle shot of the side of a silver Tacoma truck. The focus is on the black running board, which features a textured, skid-resistant surface with a series of raised rectangular pads. The running board is mounted to the side of the truck's body, which has a metallic finish. The background is a light-colored, textured concrete floor.

RUNNING BOARDS

Easy access – these eye-catching running boards make it easier to step up into your Tacoma:

- Skid-resistant step pads help ensure secure footing
- Textured black powder coating complements Tacoma's rugged styling

BED EXTENDER

Add versatility with this bed extender⁵:

- Adds almost two feet of cargo length with the tailgate down
- Tailgate closed – it provides an enclosed area to secure smaller items
- Lightweight, aircraft-grade aluminum tube construction
- Powder coat finish enhances appearance and durability
- Taillights remain visible when extended, in compliance with DOT lighting requirements



PC 111

TUBE STEPS

Step up to style when you add these tube steps to your Tacoma:

- Durable 5-in. oval tube steps feature dual-molded, skid-resistant step pads
- Step pads help channel water off the tube
- Available in either chrome plated or black powder coated
- Simple, no-drill installation



CARGO DIVIDER

Divide and conquer: This multi-position cargo divider^{5,6} lets you customize Tacoma's truck bed for a wide range of needs:

- Works in harmony with Tacoma's deck rail system
- Allows separation of loads to prevent sliding/tumbling
- Lightweight, corrosion-resistant black powder-coated aluminum construction
- Rotates for various configurations, including lying flat above cargo
- Tested to withstand loads up to 400 lbs.

TOOL STORAGE BOX

Simply put, this is the perfect tool box⁶ for your Tacoma – it's specifically designed to work with Tacoma's deck rail system:

- Corrosion-resistant, lightweight aluminum construction
- Attractive powder-coated mill finish
- Sturdy cam lock and lid support for superior security and protection for tools and valuables
- Flexible mounting lets you choose one of four locations
- Drain hole plug for easy cleaning



LOCKING FORK BIKE RACK

Bringing along your bike just got easier. Add a locking fork bike rack⁶ to your deck rail system:

- To secure bikes in the bed: remove the front wheel, position the forks in the skewer, lock in place
- Custom-designed for Tacoma's deck rail system
- Bike rack can be positioned anywhere along the front bed rail
- Helps prevent theft and adds peace of mind



TRUCK BED D-RINGS

Whether you drive your Tacoma for work or play, these factory-spec truck bed D-rings come in handy:

- Enhance functionality and versatility by adding supplemental tie-down locations
- Durable steel construction and painted black for an integrated appearance
- Loop-in-bolt design works with ratchet-type tie downs or heavy-gauge rope

MINI TIE-DOWNS WITH HOOKS

Got cargo? Need organization? Maximize Tacoma's functionality by adding a set of two fully adjustable mini tie-downs⁶:

- Durable nylon construction
- Can be positioned anywhere along Tacoma's deck rail system
- Each tie-down is rated for a maximum load of 110 lbs.; hooks are rated for up to 50 lbs.

Also Available: BED CLEAT



INTERIOR

Take a seat in any one of the Tacoma cabs. They come in three sizes: Regular Cab. AccessCab. And Double Cab. That way, it can be just you, you and a friend or the whole family. The choice is yours. Plus, when you choose Genuine Toyota Accessories, rest assured that each accessory is custom-tailored based on the cab design, so they fit and function perfectly.

PG14

DOOR SILL PROTECTORS

It's the little touches that make a big difference – like adding these door sill protectors:

- Durable vinyl construction with a skid-resistant surface
- Front door sills feature a Tacoma logo

CARPET FLOOR MATS

This is the real world: Dirt happens. But it doesn't have to soil your carpets. That's why these carpet floor mats⁷ are the ideal addition:

- Designed for a perfect fit for any of the three Tacoma cab designs
- High-grade plush nylon carpeting features a Tacoma logo
- Nibbed backing and quarter-turn fasteners (on driver's side) help keep mats in position
- Easy to remove, easy to clean



ALL-WEATHER FLOOR MATS

Tacoma is ready to get dirty. Whether for work, or for play. You can contain the mess with these all-weather floor mats⁷ as they're designed to take on the grit and grime:

- Ribbed channel design contains moisture, dirt and debris
- Rubber backing holds mats in place; driver's mat is secured with a quarter-turn fastener
- Easy to clean
- 100% recyclable

Also Available: CARGO TOTE



ASHTRAY CUP

The reality is that most modern vehicles no longer come with an ashtray. Here's a convenient solution: This self-contained ashtray cup is designed for a perfect fit in one of Tacoma's cup holders:

- Hinged lid minimizes odors and flyaway ash
- Easy to empty and clean



EMERGENCY ASSISTANCE KIT

This multi-functional emergency assistance kit contains tools and supplies to help handle minor emergency situations and repairs so you can stay on the road.

Contents include:

- Versatile, stainless steel pocket tool with multiple functions including: pliers, wire cutters, and two screwdrivers
- Heat-reflective emergency blanket
- Flashlight
- Work gloves with textured palm area to optimize grip
- Automotive-grade hose tape
- Booster/jumper cables with multi-lingual instructions
- Tire gauge
- Bungee cord
- Shop towel
- Tether strap



FIRST AID KIT

Be prepared for life's little emergencies with this handy first aid kit:

- Includes bandages, insect-sting relief pads, scissors, emergency blankets and more
- Soft-sided, water-resistant and flame-retardant black PVC zipper case
- VELCRO® brand mounting strips help the kit remain firmly in place



◀ **RS3200+ VEHICLE SECURITY SYSTEM**

When it comes to security, the RS3200+ vehicle security system* is the ideal addition:

- Designed to integrate with the keyless entry system – no need for an additional remote
- Automatic rearming and relocking, door-ajar warning, interior light activation, panic alarm, rolling code technology and disabling of the starter
- Warn-away alarm is triggered if an object strikes a window
- Alarm is activated if someone tries to force open a door or if glass is broken

TRD

Toyota trucks are known for being rugged and durable, and fast on the racetrack. TRD (Toyota Racing Development) accessories are created with the same attention to detail that helps Toyota trucks win races – on and off the road – to help make your Tacoma even more fun to drive.





◀ TRD OIL CAP

Dress up Tacoma's engine with the race-ready look of a TRD oil cap:

- Forged, polished billet aluminum construction
- High-luster TRD coating for a sharp long-term appearance
- Threaded screw-in mounting – direct replacement for stock oil cap
- Available in two styles

◀ TRD RADIATOR CAP

Cap off the good looks of Tacoma's engine bay with a TRD radiator cap:

- Releases at higher cooling system pressures than factory caps, raising the coolant boiling point to protect engines under high rpm or high load operation

TRD PERFORMANCE OIL FILTER

Spoil your Tacoma with premium engine protection, courtesy of the TRD high-performance oil filter:

- All TRD oil filters feature a rugged, perforated steel inner core to help prevent element collapse under worst-case scenarios
- Heavy duty pressure relief valve helps improve oil flow during cold starts
- High-temperature rated silicone anti-drain back valve helps retain oil in the filter to help avoid dry starts
- Ported and polished back plate provides smooth oil inlet holes to help reduce oil restriction



TRD PERFORMANCE EXHAUST SYSTEM

What is the sound of performance? Install a TRD performance exhaust system on your Tacoma and you'll know:

- Stainless steel construction for superior durability
- Helps reduce exhaust backpressure for improved horsepower and enhanced low- to mid-range torque (between 5- and 8-wheel horsepower, depending upon application)
- Produces a deep, throaty tone while meeting the 95-decibel noise limit, as required by law
- Features a TRD logo etched tip





TRD SUPERCHARGER

Boost power and performance with the TRD intercooled supercharger⁹ kit for Tacoma's 4.0-liter V6 engine:

- Produces nearly 60 extra horsepower: 304 hp @ 5,400 rpm and 334 ft./lbs. torque @ 3,600 rpm (up from 245 hp @ 5,200 rpm and 282 ft./lbs. @ 3,800 rpm), tested to SAEJ1349 standard
- Compact, one-piece plenum/manifold integrates the Eaton roots-type supercharger
- Air-to-liquid intercooler with low-temperature radiator, coolant reservoir and circulation pump delivers improved engine response and power output
- Includes 455 cc fuel injectors and iridium spark plugs – ensuring proper fuel delivery when using the supercharger system at full capacity
- Integrates factory ECU calibration for optimal fuel mileage
- Supercharger has self-contained lubrication – so there's no maintenance required on supercharger or supercharger system components
- Includes all necessary hardware and instructions for a "factory-installed" appearance
- Emissions legal in all 50 states
- See dealer for availability

TRD 16-IN. OFF-ROAD BEADLOCK-STYLE ALLOY WHEELS

Unstoppable. These TRD off-road beadlock-style alloy wheels³ are a serious upgrade:

- Off-road, race-inspired 16-in. x 7.5-in. wheels
- Bronze painted finish and machined outer lip with beadlock styling add that rugged, off-road look
- TRD-embossed snap-in center cap
- Low-pressure alloy provides a higher strength-to-weight ratio for optimal performance and durability
- Maintains OE ride quality and handling characteristics



TRD 16-IN. OFF-ROAD ALLOY WHEELS

Give your Tacoma the look! These TRD race-inspired alloy wheels³ incorporate rugged off-road styling, blended with just the right amount of street flare, to boost Tacoma's bold appearance:

- Satin silver spokes with a spun aluminum center cap and bright-machined lip for a distinct look
- Alloy wheels are lighter and provide better heat dissipation than comparable steel wheels
- Incorporates the proper weight, offset and brake clearance to ensure proper fit, finish and reliability



Also Available: TRD WHEEL LOCKS



TRD PERFORMANCE AIR FILTER

Let Tacoma's engine breathe easy with a TRD performance air filter:

- Oiled, four-ply cotton gauze maximizes media area for superb filtration and enhanced airflow
- Rugged polyurethane body encloses the filter element in a durable, epoxy-coated mesh
- Elastomeric seal for a leak-free fit
- Washable and reusable – designed to last the lifetime of your Tacoma
- Pre-oiled and ready to install – exact drop-in replacement for stock air filter

TRD 6-SPEED SHIFT KNOB

Get that TRD feel while adding character with this retro-style TRD ball-type shift knob:

- Designed to enhance shifting feel – crafted specifically for Tacoma
- 6-speed shift pattern on top, red TRD logo engraved on the side
- Simple remove and replace installation



TRD QUICKSHIFTER

When driving off-road, it's not about speed, it's about quickness. That's when adding a TRD quickshifter comes in handy:

- The linkage and repositioned pivot points provide up to a 30% shorter shift throw for a sporty, more responsive feel
- Designed specifically for the Tacoma; simple remove-and-replace installation – no drilling or special tools required



TRD HIGH-PERFORMANCE BRAKE PADS

Boost Tacoma's braking performance with TRD's high-performance, high-friction brake pads:

- Aramid- and ceramic-strengthened compound helps deliver an optimum combination of cold and hot friction with minimal brake noise
- Reduces fade during repeated stops or extended downhill driving
- Direct replacement for stock pads
- For street and off-road use (not intended for open track sessions)

TACOMA

2014 ACCESSORIES

ALWAYS GO WITH GENUINE TOYOTA ACCESSORIES

When it comes time to make your Toyota your own, remember only Genuine Toyota Accessories are designed, tested, and approved specifically for your Toyota vehicle. Plus, when you purchase them at the same time as your new vehicle, Genuine Toyota Accessories are backed by Toyota's 3-year / 36,000-mile New Vehicle Limited Warranty, valid at any Toyota dealership nationwide.

To learn more about Genuine Toyota Accessories and to see how they'll look on your Tacoma with our comprehensive Build Your Toyota feature, please visit toyota.com or to find your local Toyota dealer, please visit toyota.com/dealer.

This brochure is based upon information available at time of printing, is subject to change without notice, is for mainland U.S.A. vehicles and may differ in the state of Hawaii, Puerto Rico, the U.S. Virgin Islands and in other regions.

DISCLOSURES

1. Before towing, confirm your vehicle and trailer are compatible, hooked up and loaded properly and that you have any necessary additional equipment. Do not exceed any Weight Ratings and follow all instructions in your Owner's Manual. The maximum you can tow depends on the total weight of any cargo, occupants and available equipment. **2.** Not all models can tow 5000 lbs. Consult your vehicle's Owner's Manual for towing capacity. **3.** 16-in. performance tires are often expected to experience greater tire wear than conventional tires. Tire life may be substantially less than mileage expectancy, depending upon tires used and driving conditions. **4.** The Toyota Genuine Accessory Warranty will only apply when the installation is performed by a trained Toyota-approved installer. Please see dealer for details. **5.** Cargo and load capacity limited by weight and distribution. **6.** Requires deck rail system. **7.** To avoid potential interference with pedal operation, do not install a floor mat on top of an existing floor mat. Each mat must be secured with either quarter-turn fasteners or retention hooks (clips). This floor mat was designed specifically for use in this model and model year vehicle and SHOULD NOT be used in any other vehicle. **8.** Available only for vehicles equipped with factory remote keyless entry. **9.** The TRD Supercharger is to be sold as dealer-installed or over-the-counter options after the retail sale of the vehicle. The Supercharger may not be sold to the customer at the same time as the new vehicle and may not be financed together with the new vehicle. Please see the TRD catalog, visit www.trdusa.com or call 800-688-5912 for a complete list of TRD products and warranty information. Emission-legal for aftermarket sale via C.A.R.B. Executive Order.



Let's
Go
Places

TOYOTA.COM/ACCESSORIES

1-800-GO-TOYOTA

