



SANTA FE  
XL  
2017



# 2017

# SANTA FE XL



## TRAILER HITCH KIT

Designed to meet your towing needs, a Hyundai hitch can accommodate a wide variety of hitch-mounted accessories. Kit includes: trailer hitch, ball mount and end cap (chrome ball shown not included).



## HYUNDAI WARM-UP SYSTEM

Keep the inside of your car warm in winter months without using a drop of fuel! The Hyundai Warm-up System includes an interior cabin heater, a block heater, a fully programmable display unit, as well as an integrated battery charger.



## PREMIUM ALL-WEATHER FLOOR LINERS

Premium all-weather floor liners were designed to cover the interior carpet, providing maximum protection against the elements that other mats cannot offer. Their unique and durable design features a non-slip surface for added comfort and a long-lasting premium look. Remove carpet mats prior to installation.



## SIDE STEPS – OVAL TUBES

These oval side steps were designed to complement the design nature of your Hyundai. They are as attractive as they are functional. Finished in stainless steel, these oval side steps include step pads for secure footing and will look good for years to come.



## CROSS RAILS

This durable, quick-locking cross rail system lets you transport cargo easily, without sacrificing interior room.

**3.3L FWD****STANDARD EQUIPMENT INCLUDES:**

3.3L DOHC V6 engine with GDI (290hp)  
 18" alloy wheels with P235/60R18 all-season tires  
 6-speed automatic transmission with SHIFTRONIC® manual mode  
 Air conditioning with manual climate control and second-row vents  
 iPod®/USB/auxiliary connectivity  
 Anti-lock Braking System (ABS) with Electronic Brake-force Distribution (EBD) and Brake Assist (BA)  
 Electronic Stability Control (ESC) with Traction Control System (TCS)  
 Downhill Brake Control (DBC) and Hillstart Assist Control (HAC)  
 Windshield wiper de-icer  
 Bluetooth® hands-free phone system with voice recognition  
 Sliding second-row seats\*  
 Driver and front passenger illuminated vanity mirrors  
 Airbags (7): Dual front, front seat-mounted side-impact, roof-mounted side-curtain with rollover sensor and driver's knee airbag  
 Heated front seats

Deluxe cloth seats with YES Essentials® stain protection  
 6-speaker AM/FM/SiriusXM™/CD/MP3 audio system with 5.0" touch-screen and rearview camera  
 Automatic headlights with LED daytime running lights  
 7-passenger seating  
 Second-row 40/20/40 split-fold seats\* with manual fore-aft and recline adjustment  
 Third-row 50/50 split bench with fold-forward head restraints  
 Heated, power-adjustable side mirrors  
 Power windows with front auto up/down and pinch protection  
 Roof-rack side rails  
 Remote keyless entry with alarm  
 Steering wheel-mounted audio, cruise and Bluetooth® controls  
 2,268 kg (5,000 lbs.) towing capacity  
 Trailer tow pre-wiring

**3.3L PREMIUM****INCLUDES 3.3L FWD STANDARD EQUIPMENT PLUS:**

All-Wheel Drive  
 Heated steering wheel  
 Dual-zone automatic climate control with CleanAir Ionizer  
 12-way power-adjustable driver's seat with 4-way power lumbar support and adjustable head restraint  
 Leather-wrapped steering wheel and gearshift knob  
 Heated second-row seats  
 Manual rear side window sunshades

Rear Parking Assist Sensors (RPAS)  
 Third-row air conditioning controls with vent  
 115-volt cargo area power outlet  
 Smart Power Liftgate  
 Blind Spot Detection (BSD) system with Lane Change Assist (LCA) and Rear Cross-Traffic Alert (RCTA)  
 LED side mirror turn signal repeaters  
 Proximity keyless entry with push-button ignition

**3.3L LUXURY****INCLUDES 3.3L PREMIUM STANDARD EQUIPMENT PLUS:**

4-way power-adjustable passenger's seat with height adjust  
 Electrochromic auto-dimming inside rearview mirror with HomeLink® and compass  
 Leather seating surfaces  
 8.0" touch-screen navigation system with rearview camera  
 Infinity® AM/FM/CD/SiriusXM™/MP3 audio system with 12 speakers

LED fog lights  
 Panoramic sunroof  
 Driver's Integrated Memory System (IMS)  
 Optional: available second-row captain's chairs with cupholders (6-passenger seating)

**3.3L LIMITED****INCLUDES 3.3L LUXURY STANDARD EQUIPMENT PLUS:**

19" alloy wheels with P235/55R19 all-season tires  
 High Intensity Discharge (HID) headlights  
 LED tail lights  
 Deluxe aluminum door scuff plates

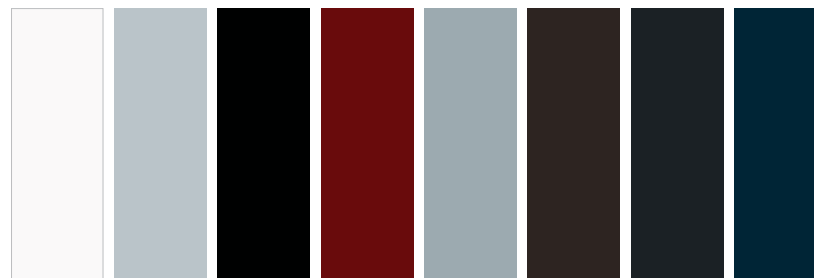
Supervision instrument cluster with 4.2" TFT LCD display  
 Ventilated front seats  
 Optional: available second-row captain's chairs with cupholders (6-passenger seating)

**3.3L ULTIMATE****INCLUDES 3.3L LIMITED STANDARD EQUIPMENT PLUS:**

6-passenger seating (second-row captain's chairs with cupholders)  
 Adaptive Cruise Control (ACC) with stop-and-go capability  
 Autonomous Emergency Braking (AEB) with Pedestrian Detection  
 High Beam Assist (HBA)

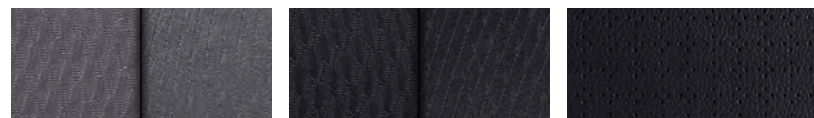
Lane Departure Warning System (LDWS)  
 HID headlights with Adaptive Cornering System (ACS)  
 Multi-view Camera System  
 Electronic Parking Brake (EPB)

## EXTERIOR COLOURS

**MONACO WHITE****CIRCUIT SILVER****BECKETTS BLACK****REGAL RED PEARL****IRON FROST****JAVA ESPRESSO****NIGHT SKY PEARL****STORM BLUE\***

\*Not available on 3.3L FWD model.

## INTERIOR COLOURS

**GREY CLOTH**

With YES Essentials® stain protectant  
 Standard on 3.3L FWD model

**BLACK CLOTH**

With YES Essentials® stain protectant  
 Standard on 3.3L Premium model

**BLACK LEATHER**

Standard on 3.3L Luxury, 3.3L Limited and 3.3L Ultimate models

**GREY LEATHER**

Available on 3.3L Luxury, 3.3L Limited and 3.3L Ultimate models (Circuit Silver and Becketts Black exterior colours only)

**BEIGE LEATHER**

Available on 3.3L Luxury, 3.3L Limited and 3.3L Ultimate models (Monaco White, Becketts Black and Regal Red Pearl exterior colours only)

**SADDLE LEATHER**

Available on 3.3L Ultimate model (Monaco White, Becketts Black, Storm Blue and Iron Frost exterior colours only)

## WHEELS



**Standard**  
**18" alloy wheel**



**Available**  
**19" alloy wheel**

Choice of interior colour depends upon model and/or exterior colour selection. Due to the print production process, the colours shown throughout this brochure may vary slightly from the actual hue. Textures may not be exactly as shown. Visit [hyundaicanada.com](http://hyundaicanada.com) or see your dealer for details.

2017 SANTA FE XL SPECIFICATIONS

				3.3L FWD	3.3L PREMIUM	3.3L LUXURY	3.3L LIMITED	3.3L ULTIMATE
PERFORMANCE								
Engine	290 hp, 252 lb-ft torque, 3.3L GDI 6-cylinder engine			•	•	•	•	•
Transmission	6-speed automatic with SHIFTRONIC® manual mode			•	•	•	•	•
Drive Configuration	Front Wheel Drive (FWD)			•	-	-	-	-
	All-Wheel Drive (AWD)			-	•	•	•	•
Fuel Economy^	3.3L FWD: 12.9 L / 100 km City	9.4 L / 100 km Highway	11.3 L / 100 km Combined					
	3.3L AWD: 13.0 L / 100 km City	9.7 L / 100 km Highway	11.5 L / 100 km Combined					
	3.3L AWD: 13.9 L / 100 km City	10.8 L / 100 km Highway	12.5 L / 100 km Combined					
EXTERIOR								
Wheels and tires	18" x 7.5J alloy wheels with P235/60R18 all-season tires			•	•	•	-	-
	19" x 7.5J alloy wheels with P235/55R19 all-season tires			-	-	-	•	•
	Temporary spare tire			•	•	•	•	•
Exterior lighting	Projection headlights with LED accents			•	•	•	•	•
	LED daytime running lights			•	•	•	•	•
	Automatic headlights			•	•	•	•	•
	LED fog lights			-	-	•	•	•
	High Intensity Discharge (HID) headlights			-	-	-	•	-
	HID headlights with Adaptive Cornering System (ACS)			-	-	-	-	•
	High Beam Assist			-	-	-	-	•
	LED tail lights			-	-	-	•	•
Outside mirrors	Power activation, body colour, heated with timer			•	•	•	•	•
	Blind Spot Detection indicators			-	•	•	•	•
	LED side mirror turn signal repeaters			-	•	•	•	•
Mouldings and Trim	Chrome door handles			•	•	•	•	•
	Two-tone door garnish			-	-	-	•	•
Glass	Solar control tinted glass			•	•	•	•	•
	Rear window privacy glass			•	•	•	•	•
Wipers	Windshield wiper de-icer			•	•	•	•	•
	Rear windshield, 2-speed with washer			•	•	•	•	•
INTERIOR								
Seating	7-passenger capacity			•	•	•	•	-
	6-passenger capacity			-	-	◦	◦	•
	Cloth seating surfaces			•	•	-	-	-
	Leather seating surfaces			-	-	•	•	•
	Driver's seat with 2-way power lumbar support			•	-	-	-	-
	Driver's seat with 4-way power lumbar support			-	•	•	•	•
	12-way power-adjustable driver's seat			-	•	•	•	•
	4-way power-adjustable passenger seat with height adjustment			-	-	•	•	•
	Driver's Integrated Memory System (IMS) for seat and mirror positions			-	-	•	•	•
	Heated front seats			•	•	•	•	•
	Ventilated front seats			-	-	-	•	•
	40/20/40 split-folding second-row bench seat			•	•	◦	◦	-
	Rear adjustable head restraint			•	•	•	•	•
	Heated second-row seats			-	•	•	•	•
	Rear sliding seats			•	•	•	•	•
	Remote release cargo area			•	•	•	•	•
	Captain's chairs			-	-	◦	◦	•
	50/50 split-folding third-row bench seat			•	•	•	•	•

• = Standard    - = Not Available    • = Optional

		3.3L FWD	3.3L PREMIUM	3.3L LUXURY	3.3L LIMITED	3.3L ULTIMATE
INTERIOR (continued)						
Multimedia	AM/FM/SiriusXM™/CD/MP3 audio system with 5.0" LCD touch-screen display	•	•	-	-	-
	8.0" touch-screen navigation system with Infinity® audio system and 12 speakers	-	-	•	•	•
	Rearview camera	•	•	•	•	•
	Bluetooth® hands-free phone system	•	•	•	•	•
HVAC	Manual climate control with auto-defogging system	•	-	-	-	-
	Dual-zone automatic climate control with CleanAir Ionizer	-	•	•	•	•
	Rear seat HVAC ducts (mounted in B-Pillar)	•	•	•	•	•
	Rear window defroster with timer	•	•	•	•	•
Steering wheel	Leather-wrapped steering wheel	-	•	•	•	•
	Heated steering wheel	-	•	•	•	•
	Audio (volume, mode, seek) and Bluetooth® hands-free telephone controls	•	•	•	•	•
	Manual tilt-and-telescopic steering column adjustment	•	•	•	•	•
Convenience	Cruise control	•	•	•	•	•
	Adaptive Cruise Control (ACC) with stop-and-go capability	-	-	-	-	•
	Panoramic sunroof (power tilt-and-slide with one-touch operation)	-	-	•	•	•
	Power windows with driver and passenger auto up/down and pinch protection	•	•	•	•	•
	Proximity activated Smart Power Liftgate	-	•	•	•	•
	Proximity keyless entry with push-button ignition	-	•	•	•	•
	Remote keyless entry system with security alarm	•	•	•	•	•
	Cargo area under floor storage	•	•	•	•	•
	Rear side window sunshades	-	•	•	•	•
Inside rearview mirror	Electrochromic auto-dimming rearview mirror with compass	-	-	•	•	•
	HomeLink® garage door transceiver	-	-	-	•	•
Other	Deluxe door scuff plates (aluminum)	-	-	-	•	•
	Sunvisor with illuminated vanity mirrors and visor extension	•	•	•	•	•
SAFETY						
Safety	Airbags (7): Driver's knee (1), front impact (2), front seat-mounted side impact (2), front-rear side curtain	•	•	•	•	•
	Blind Spot Detection (BSD) with Lane Change Assist (LCA) and Rear Cross-Traffic Alert (RCTA)	-	•	•	•	•
	Electronic Stability Control (ESC) with Traction Control System (TCS)	•	•	•	•	•
	Anti-lock Braking System (ABS) with Electronic Brake-force Distribution (EBD) and Brake Assist (BA)	•	•	•	•	•
	Vehicle Stability Management (VSM)	•	•	•	•	•
	Rear Parking Assistance Sensors (RPAS)	-	•	•	•	•
	Lane Departure Warning System (LDWS)	-	-	-	-	•
	Multi-view Camera System	-	-	-	-	•
	Autonomous Emergency Braking (AEB)	-	-	-	-	•

For more detailed specifications and information, please visit [hyundaicanada.com](http://hyundaicanada.com), or visit your dealer today.

™&®The Hyundai name, logos, product names and feature names are trademarks owned by Hyundai Auto Canada Corp.. Specifications, features, illustrations, accessories, materials and equipment and all other information shown are based on the latest information available at the time of publication. Although descriptions are believed to be correct, accuracy cannot be guaranteed. Hyundai Auto Canada Corp. reserves the right to make any changes or modifications at any time, without notice or obligation, including, without limitation, in colour, specifications, features, accessories, materials, equipment and models. ^Fuel economy figures are based on manufacturer's testing and are used for comparison purposes only. Actual fuel efficiency may vary based on driving conditions and the addition of certain vehicle accessories. The SiriusXM™ name is a trademark of SiriusXM Satellite Radio Inc.. Bluetooth® word mark and logos are registered trademarks owned by Bluetooth SIG, Inc.. HomeLink® is a registered trademark of Johnson Controls Inc.. Infinity® is a registered trademark of Harman International, Inc.. All other trademarks and trade names are those of their respective owners.

[hyundaicanada.com/santa-fe-xl](http://hyundaicanada.com/santa-fe-xl)



™/®The Hyundai name, logos, product names, feature names, images and slogans are trademarks owned by Hyundai Auto Canada Corp. Specifications, features, illustrations, accessories, materials and equipment and all other information shown in this brochure are based on the latest information available at the time of publication. Although descriptions are believed to be correct, accuracy cannot be guaranteed. Hyundai Auto Canada Corp. reserves the right to make any changes or modifications at any time, without notice or obligation, including, without limitation, in colour, specifications, features, accessories, materials, equipment and models. Some vehicles are shown with optional equipment. All Hyundai warranties have no deductible. \*Hyundai's Comprehensive Limited Warranty coverage covers most vehicle components against defects in workmanship under normal use and maintenance conditions. \*\*Hyundai's 24-Hour Roadside Assistance Program is a limited service and does not cover certain costs or expenses. Roadside Assistance is not a warranty. †Autonomous Emergency Braking (AEB) is designed to detect vehicles that are directly in front of the Santa Fe XL. AEB will not detect all vehicles and objects. AEB may not work on winding or hilly roads, during certain weather conditions such as rain, snow, fog and any other times of limited visibility. AEB initiates full braking at speeds between 8 and 75 km/h (vehicle detection) or 8 to 65 km/h (pedestrian detection). AEB will not detect all pedestrians under certain conditions. See Owner's Manual for detailed descriptions of example condition in which AEB may not detect a pedestrian. AEB is not a substitute for safe driving. Always check your surroundings when driving. See Owner's Manual for further details and limitations. ‡Never rely completely on Blind Spot Detection (BSD) and be sure to use proper lane changing procedures. BSD will not detect every object or vehicle and will not prevent accidents. Always look over your shoulder and use your mirrors to confirm clearance. See Owner's Manual for further details and limitations. §Never rely exclusively on the Rear Cross-Traffic Alert. Always look over your shoulder and use your mirrors to confirm rear clearance. There are limitations to the function, detection, range and clarity of the system. The system may not detect every vehicle. This system does not detect stationary objects. Vehicle must be in reverse and has to be traveling at 10 km/h or less. See Owner's Manual for further details and limitations. ¶Adaptive Cruise Control (ACC) with stop/start capability is not a collision avoidance or warning device. ACC is for highway use only and should not be used in poor weather, heavy or varying traffic, or on winding or slippery roads. Driver remains responsible to slow or stop the vehicle to avoid a collision. Acceleration after the vehicle comes to a complete stop will only occur when the vehicle has been stopped for less than three seconds. See Owner's Manual for further details and limitations. \*The Lane Departure Warning System operates when vehicle speed exceeds 70 km/h and only when the lane markings are clearly visible on the road and detected by the system. It will not prevent loss of control. See Owner's Manual for further details and limitations. The SiriusXM™ name is a trademark of SiriusXM Satellite Radio Inc.. Bluetooth® word mark and logos are registered trademarks owned by Bluetooth SIG, Inc.. iPod® is a registered trademark of Apple Inc.. HomeLink® is a registered trademark of Johnson Controls Inc.. YES Essentials® is a registered trademark of Sage Automotive Interiors. Infinity® is a registered trademark of Harman International, Inc.. All other trademarks and trade names are those of their respective owners. \*7-passenger models only.

