

2017 HYUNDAI

SONATA/SONATA HYBRID



2017 HYUNDAI SONATA

WHAT MAKES THE SONATA A BETTER CAR? THE COMPANY THAT STANDS BEHIND IT.

You're shopping for a new car at an amazing time. Never before have midsize sedans offered such high levels of performance, comfort and safety. So what makes Hyundai Sonata better?

For starters, it doesn't think of itself as a typical midsize. It's much roomier, with best-in-class interior volume and more front head room and legroom than its midsize sedan competitors.¹ In fact, Sonata is the only car in its competitive set that the EPA classifies as a large car.

Sonata is innovative, with Android Auto™ and Apple CarPlay™ support transforming its passenger cabin into an extension of your smartphone via a brilliant 7" display audio touchscreen.² Sonata is also premium, with available features like heated and ventilated front seats, the segment's only panoramic sunroof, and HID headlights with Dynamic Bending Light to improve visibility in curves.

Safety? Sonata's 5-Star Safety Rating,³ along with its available accident avoidance and driver-alert technologies, are just part of the story. It's not enough for us to build a better car – we've got to be the better car company. Which is why we created Hyundai Blue Link,[®] an advanced connected car system designed to put your mind at ease with features like SOS Emergency Assistance, Remote Lock/Unlock and Monthly Vehicle Health Reports.⁴ It's also why we back the quality of every Sonata we build with Hyundai Assurance, a suite of exceptional owner services that includes America's Best Warranty.

All of which makes shopping for a new Hyundai Sonata amazing indeed.



Claim based on comparison of specifications on manufacturer websites. ¹ Apple CarPlay and Android Auto not available on Sonata base model. ² Government star ratings are part of the National Highway Traffic Safety Administration's New Car Assessment Program (safercar.gov). ³ Blue Link agents will contact existing emergency service responders. Only use Blue Link and corresponding devices when it is safe to do so. Blue Link subscription service agreement required. Features vary by subscription plan. Blue Link service works using CDMA-based cellular networks in the 50 United States. Blue Link service is not available where there is no cellular coverage, particularly in enclosed or remote areas. Service availability may be affected by signal strength, foliage, weather, topographical conditions (mountains) and nearby structures (tall buildings, tunnels) and other factors. For additional details and system limitations, visit HyundaiBlueLink.com.



SONATA LIMITED 2.0T in Lakeside Blue / SONATA HYBRID LIMITED with Ultimate Package in Diamond White Pearl



¹ Claim based on comparison of specifications on manufacturer websites. ² EPA estimates for comparison only. Mileage may vary. Your actual mileage will vary with options, driving conditions, driving habits and vehicle's condition.

SONATA LIMITED 2.0T in Lakeside Blue



PERFORMANCE ENGINEERING

OUR RETHINK OF THE MIDSIZE SEDAN STARTS UNDER THE HOOD.

Sonata features a new generation of powerful, advanced 4-cylinder engines. The performance of these compact, lightweight powerplants is so remarkable, it's led Hyundai to defy the conventional wisdom that says you've got to offer V6 power in a midsize sedan.

The base Sonata comes with an advanced 2.4L GDI engine offering an ideal combination of performance and efficiency in everyday driving. Sport and Limited models offer an optional 2.0L turbo engine for enhanced performance, and our Eco model uses an ultra-efficient 1.6L turbo. Sonata Hybrid? It uses an Atkinson cycle 2.0L GDI engine as part of its innovative Blue Drive® powertrain.

Hyundai engineers brought a similar rethink to the Sonata suspension. By adding aluminum components, they subtracted weight. So Sonata's handling is now more agile, no matter which of its alloy wheel sizes – 16", 17" or 18" – you choose. In fact, Sonata has the tightest turning diameter in its class.¹

Want an extra serving of sporty? Sonata Sport 2.0T and Limited 2.0T models feature twin-scroll turbocharging that puts up to 245 hp underfoot. They're also equipped with larger front brakes and sport-tuned suspension and steering. A rear diffuser and quad exhaust tips hint at the elevated performance that awaits you.



STYLE WITH AERODYNAMIC SUBSTANCE

Look at Sonata, and you see flowing sculptural shapes and a confident stance. Your eye catches premium details like LED lighting and bright molding running from the headlight down the side of the car. What you can't see is its aerodynamic efficiency. Sonata's standard rear lip spoiler and an underbody cover help achieve a coefficient of drag impressive for a midsize sedan – just 0.27 Cd. It's a figure that translates into better fuel economy, lower noise levels inside the cabin and enhanced driving stability at highway speeds.

DRIVE MODE SELECT

Precisely how would you like your Sonata to feel? You decide with Drive Mode Select. At the push of a button, Sonata alters the steering and engine character to match one of three driving modes: ECO for fuel efficiency, NORMAL for balanced performance and SPORT for dynamic steering feel and aggressive engine response.

ADVANCED TWIN-SCROLL TURBO

In Sonata 2.0T, a twin-scroll turbo helps improve combustion efficiency, recovering more energy from the exhaust than a single-scroll turbocharger. The turbo's manifold and turbine housing is a single piece cast from stainless steel – a lightweight design that helps minimize the lag time of waiting for the turbine to spin. So when you ask for more power, the response is instantaneous. And invigorating.

ECO TURBO

Sonata Eco boasts an EPA-estimated 36 MPG on the highway.² Powered by a 1.6L turbo GDI engine, it's as fun to drive as it is practical to own. With the segment's first 7-speed Dual Clutch Transmission, acceleration is a seamless pull. In fact, Eco's 1.6L turbo generates more torque than competing 2016 Ford Fusion, Chevy Malibu and Volkswagen Passat models.¹



SAFETY INNOVATION

CLASS-LEADING ADVANCED SAFETY TECHNOLOGIES. JUST IN CASE.

It's good to know Sonata has a solid track record for earning the highest overall safety ratings – the NHTSA 5-Star crash rating and the IIHS Top Safety Pick+ award.¹ It's even better to understand how Sonata helps ensure your safety – before, during and after a collision. One reason Sonata performed so well in industry crash tests is its rigid body, constructed using more than 50 percent advanced high-strength steel. It's a material that's lighter, yet more rigid than ordinary steel. The passenger cabin is also fitted with seven standard airbags, including a driver's knee airbag.²

To help you avoid accidents in the first place, Sonata offers some of the midsize segment's most advanced safety technologies. Automatic Emergency Braking, Lane Departure Warning and Blind Spot Detection act like extra sets of eyes in traffic. Vehicle Stability Management integrates traction, steering and ABS braking to help maintain Sonata's steering control. During emergency braking situations, Brake Assist technology helps provide maximum braking force. And by including Electronic Brake-force Distribution, Sonata maintains optimal braking pressure at each wheel for more controlled braking. Just in case.



¹ Government 5-Star Safety Ratings are part of the National Highway Traffic Safety Administration's (NHTSA's) New Car Assessment Program (safercar.gov). Top Safety Pick+ rating applies to vehicles equipped with available Automatic Emergency Braking and is based on a "Good" in the 31 mph side-impact crash test, 40 mph moderate overlap frontal crash test, 20 mph rear-impact test and roof strength testing, a "Good" or "Acceptable" in the 40 mph small overlap frontal crash test, and an "Advanced" or "Superior" rating for front crash prevention performed by the IIHS. For details, please visit [iihs.org](https://www.iihs.org). ² The Supplemental Restraint System (SRS) is designed to work with the 3-point seatbelt system. The SRS deploys in certain frontal and/or side-impact collisions where significant injury is likely. The SRS is not a substitute for seatbelts, which should be worn at all times. Children under the age of 13 should be restrained securely in the rear seat. NEVER place a rear-facing child seat in the front seat of a vehicle that has a passenger-side airbag. ³ Available on Sonata Limited, standard on Limited 2.0T. Automatic Emergency Braking is designed to assist drivers in avoiding or reducing the severity of collisions with cars that have slowed or stopped in front of them. It is a supplemental assist, and does not replace the need for extreme care and attention by the driver. Automatic Emergency Braking may not stop the vehicle completely and will not avoid all collisions. For details on operation and limitations, please refer to the Owner's Manual. ⁴ Available on Sonata Limited, standard on Limited 2.0T. The Lane Departure Warning system operates above approximately 44 mph and only when the lane markings are clearly visible on the road. It will not prevent loss of control. Lane Change Assist provides an audible and visual alert if the turn signal is activated and another vehicle in the blind spot is sensed. There are limitations to the function, range, detection and clarity of the system. Refer to your Owner's Manual for more information. ⁵ Standard on Sonata Limited and Limited 2.0T. Do not rely completely on Blind Spot Detection (BSD) and be sure to use proper lane changing procedures. BSD may not detect every object or vehicle and will not prevent accidents. Rear Cross-traffic Alert is active when the vehicle is in reverse and backing at a speed less than 6 mph. See Owner's Manual for further product details and limitations.



LANE DEPARTURE WARNING

LANE CHANGE ASSIST

BLIND SPOT DETECTION WITH REAR CROSS-TRAFFIC ALERT

This radar-based system helps detect when a vehicle is in the Sonata driver's blind spot, providing both audible and visual alerts to help keep you aware as you move down the road. When reverse gear is selected, Rear Cross-traffic Alert helps identify and warn the driver of vehicles approaching from the side. Which helps make backing out of crowded parking spaces a lot less stressful.⁵

AUTOMATIC EMERGENCY BRAKING

Using both a camera and radar sensor, Sonata's Automatic Emergency Braking system detects if a crash is imminent. If it is, and the driver doesn't react, the system engages. It can even apply full brake-force stopping power from 5 to 50 mph.³

AUTOMATIC HIGH BEAM ASSIST

This convenient feature (available on Sonata Limited, standard on Limited 2.0T) automatically switches from high to low beam headlights when an oncoming vehicle is detected. Sonata's adaptive front lighting system includes a new Dynamic Bending Light feature that helps you see better when driving around corners at night.

LANE DEPARTURE WARNING AND LANE CHANGE ASSIST

Drift out of your lane without signaling, and Sonata's Lane Departure Warning informs the driver with audible and visual cues.⁴ Want to change lanes? Lane Change Assist measures the closing speed of an approaching vehicle in the adjacent lane to determine if changing lanes is safe. If it's not, it gives the driver audible and visual warnings.





¹ Claim based on comparison of specifications on manufacturer websites. ² Available on Sonata Sport, standard on Sonata Limited and Limited 2.0T. ³ Available on Sonata Limited, standard on Limited 2.0T.

SONATA LIMITED with Ultimate Package in Beige Leather



PREMIUM INTERIOR DESIGN

WHO PARKED THE LUXURY CAR INSIDE A MIDSIZE SEDAN? WE DID.

It was pretty easy, actually. After all, there was plenty of room: Sonata has the most interior volume of any car in its class.¹ With all that front head room and legroom, the Sonata interior seemed like the ideal place to lavish our attention on the little things that create an extraordinary experience for you and your passengers. The result is a premium design execution where you'll instantly sense the driver-oriented ergonomics. Notice how the center console pitches slightly toward the driver?

In Sonata Limited, you're greeted with design cues that are unmistakable – you know you're somewhere special. Your first indication comes when you approach with the Proximity Key in your pocket or purse.² Your Sonata senses it's you, illuminates your door handle and unlocks your door with the press of a button. Step across the premium door sill plate and ease into a world crafted from richly grained leather and woodgrain trim. Run your hand across the stitching on the instrument cluster hood and door panel. Grab hold of the leather-wrapped steering wheel and shift knob. You're now ready to enjoy the finer things in life.



HEATED AND VENTILATED SEATS



HEATED AND VENTILATED SEATS

Sit down and relax – you're in the lap of luxury. On Sonata Limited, heated leather front seats come standard. Looking for even greater comfort? Ventilated front seats and heated rear seats are a smart choice.³ And if you share seat time in your Sonata with someone else in the family, no worries: At the push of a button, a memory feature for the driver's seat automatically recalls two seat and side mirror settings.³

COMFORT FOR ALL

Sonata Limited comes standard with fully automatic dual temperature control that maintains preset temperatures for front seat occupants. For passengers seated in the rear, floor console-mounted rear vents help keep the back of the cabin just as comfortable.

INTERIOR FLAIR 2.0

The Sport 2.0T and Limited 2.0T trim levels receive special attention from Hyundai's interior designers. They feature distinctive sport seating, a sport shifter with contrast stitching, a D-cut steering wheel with paddle shifters and aluminum sport pedals. The instrument cluster includes mechanical dial gauges and six o'clock needle positions.

REAR SUNSHADES

A class exclusive, rear side sunshades are integrated into Sonata Limited's door panels, so they're out of sight when not in use.³ Easily raised by hand, the shades are designed to add privacy while shading passengers from bright sunlight – especially useful for families with small children.





¹ Available on Sonata Limited, Standard on Limited 2.0T. Smart Cruise Control (SCC) is not a collision avoidance or warning device. SCC is for highway use only and should not be used in poor weather, heavy or varying traffic, or on winding or slippery roads. Driver remains responsible to slow or stop the vehicle to avoid a collision. ² Available on Sonata Sport, standard on Sonata Limited, Sport 2.0T and Limited 2.0T. ³ Android Auto works with smartphones running on Android 5.0, Lollipop and higher. Android, Android Auto, Google Play and other marks are trademarks of Google Inc. Apple CarPlay works with iPhone 5s, iPhone 5c, iPhone 5 and later models running the latest version of iOS 7 and above. Apple is a registered trademark of Apple Inc. ⁴ All SiriusXM services require a subscription, sold separately by SiriusXM after the trial period. Fees and taxes apply. All fees and programming are subject to change. To cancel, please call 1-866-635-2349. See our Customer Agreement for complete terms at siriusxm.com. Sirius, XM, SiriusXM and all related marks and logos are trademarks of Sirius XM Radio Inc.

SONATA LIMITED 2.0T in Gray Leather



INTELLIGENT TECHNOLOGY

JUDGE SONATA BY HOW WELL IT HANDLES THE TECHNOLOGY LEARNING CURVE.

With all the technology in cars today, automotive performance seems to be defined by a new kind of curve: The learning curve. At Hyundai, our focus isn't on technology for the sake of technology. It's on ensuring that whenever we add a new capability – whether its function is to inform, entertain or protect – you quickly find that it makes for a more rewarding experience.

Sonata features a 7" display audio system with convenient access to many of your favorite smartphone apps. Sync your smartphone to Sonata and access music, maps, messages and more using the center console touchscreen or a button on the steering wheel. SiriusXM® Satellite Radio and a Bluetooth® hands-free phone system with voice commands and wireless audio streaming comes standard, too.

Want to see more? There's an available 8" navigation system. It features a split screen that displays maps with junction views and audio options all at once. Rearview camera? Check. Voice commands? Check. Premium 400-Watt Infinity® audio system with SiriusXM Satellite Radio, HD Radio™ and advanced Blue Link features? Check. Check. Check.



SENSORS MAKING SENSE

Sonata uses sensors to make things easier on you. The available Smart Cruise Control automatically adjusts Sonata's speed to maintain a safe distance from vehicles ahead, and can even sense when to stop completely and start up again as traffic dictates.¹

SMART TRUNK

Sonata's smart trunk uses proximity sensors and your Proximity Key to detect when you're standing at the rear of your car, and automatically opens the trunk lid. So you can keep your hands free to hold onto those grocery bags, sports gear...or whatever else you want to stash in the car's generous cargo area.²

SMARTPHONE SYNC

Apple CarPlay™ offers a smarter, easier way to tap into the functionality of your iPhone while driving. You can access your Apple Music and Maps, make phone calls and send messages through Sonata's touchscreen or with voice commands through Siri. Sonata also supports Android Auto,™ which lets you use compatible Android™ smartphones to access Google Maps,™ listen to music from the Google Play™ store, and more.³

SIRIUSXM WITH TRAFFIC & TRAVEL LINK®

Sonata lets you enjoy your favorite SiriusXM Satellite Radio music, talk and comedy channels in crystal-clear HD sound. With Traffic & Travel Link, you'll stay up-to-the-minute on what's happening with traffic, sports, weather and stocks, as well as nearby fuel prices and movies.⁴ SiriusXM Advanced Audio lets you take advantage of smart features that buffer up to six preset channels. TuneStart™ automatically plays songs from the beginning when you switch to a preset channel. There's even a feature that lets you record SiriusXM programming for playback later.





¹ Only use Blue Link and corresponding devices when it's safe to do so. Blue Link subscription service agreement required. Features vary by subscription plan. Blue Link service works using CDMA-based cellular networks in the 50 United States. Blue Link service is not available where there is no cellular coverage, particularly in enclosed or remote areas. Service availability may be affected by signal strength, foliage, weather, topographical conditions (mountains) and nearby structures (tall buildings, tunnels) and other factors. For additional details and system limitations, please visit HyundaiBlueLink.com. ² Remote Vehicle Start is only available for push button start equipped vehicles with an automatic transmission or a Dual Clutch Transmission. Not available on all models. Remote Climate Control is available on properly equipped models with fully automatic temperature control. Remote Stop is only available while the vehicle is in Remote Start mode. ³ Blue Link Connected Care includes one year of the Blue Link Connected Care Package and requires an active Blue Link subscription. One-year term starts from the new vehicle date of first use and is available for new vehicle purchases and leases based upon terms and conditions on the Blue Link subscription enrollment pages. Cellular and GPS coverage is required.

CONNECTED CAR SYSTEM

THINK OF SONATA AS A COMMUNICATION DEVICE WITH FOUR WHEELS.

Hyundai Blue Link[®] transforms Sonata into a car unlike any you've ever owned.¹ Using Blue Link for Apple Watch[™] or Android Wear,[™] you can remotely start your Sonata and warm or cool its interior before you get in. With available Blue Link Guidance, you can use Destination Search Powered by Google[™] to quickly find points of interest, then send directions from your smartphone to your Sonata's nav system. You can even use the Blue Link app to remotely flash your car's lights in a crowded parking lot, start the engine, or lock the doors from almost anywhere.²

Here's more peace of mind: Blue Link Connected Care.³ Free for one year on a new Sonata, this comprehensive safety and car care package offers 24/7 SOS Emergency Assistance and Automatic Collision Notification that calls for help if your car's been in an accident. You can monitor your Sonata's operation with Monthly Vehicle Health Reports or schedule a service appointment from the driver's seat of your car. And we're continuing to work on updates to Blue Link, finding better ways to make life between your home, your office and your Hyundai seamless.



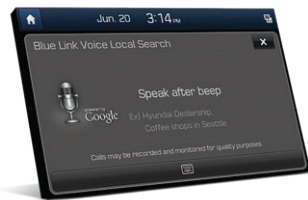
BLUE LINK REMOTE

- Remote Lock/Unlock
- Remote Start with Climate Control
- Car Finder
- Stolen Vehicle Recovery
- Vehicle Safeguard Alerts



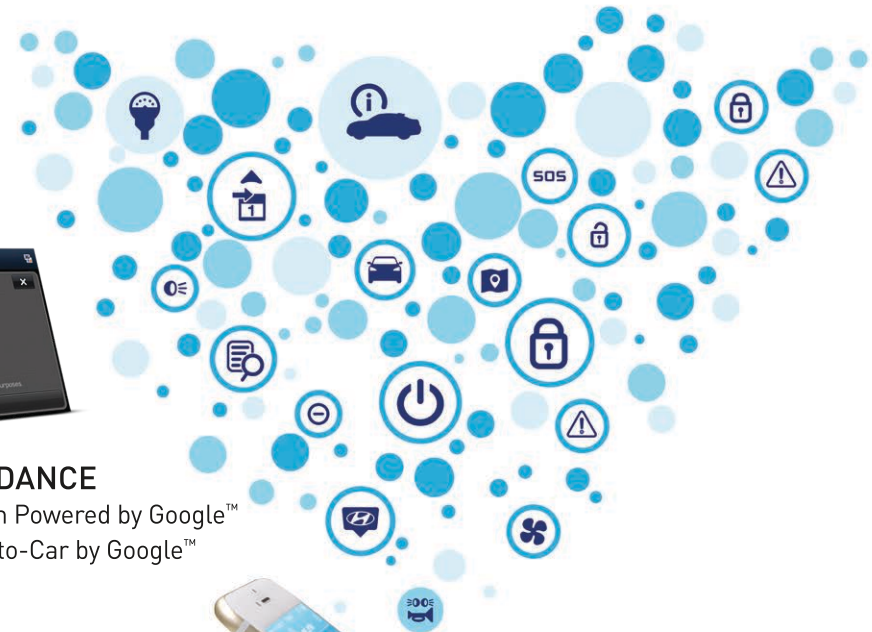
BLUE LINK CONNECTED CARE

- SOS Emergency Assistance
- Automatic Collision Notification
- Monthly Vehicle Health Reports
- Maintenance Reminders



BLUE LINK GUIDANCE

- Destination Search Powered by Google[™]
- Destination Send-to-Car by Google[™]



2017 SONATA HYBRID

CONSUME LESS. RELAX MORE.

Could you live life by those four simple words? Here's a good place to start: The 2017 Sonata Hybrid. Its 2.0L GDI hybrid engine delivers 193 net horsepower with an EPA-estimated 45 MPG on the highway.¹ An industry-leading 0.24 drag coefficient cuts wind resistance to help reduce fuel consumption. Sonata Hybrid even knows how to cut hassle: It's the only hybrid in its class with a smart trunk.² When it senses you're standing behind the trunk with the Proximity Key in your pocket or purse, it pops open automatically.

Now sit back, relax...and imagine a spacious interior with class-leading passenger and cargo volume.² One in which you're embraced by comfort and surrounded by convenience features like a large 7" screen for the audio system that also interacts with your smartphone. Proximity Key entry with push button start. Dual automatic temperature control. An available panoramic sunroof. And much more.

Heated and ventilated front seats are also available. Sonata Hybrid safety systems include available Blind Spot Detection and Forward Collision Warning. And it's all backed by America's Best Warranty. The hybrid-related components are covered for 10 years or 100,000 miles with a lifetime hybrid battery warranty. No other car in its class matches that.



¹EPA estimates for comparison only. Mileage may vary. Your actual mileage will vary with options, driving conditions, driving habits and the vehicle's condition. ²Claim based on comparison of specifications on manufacturer websites. ³Blue Link subscription required. Remote Vehicle Start is only available for push button start equipped vehicles with an automatic transmission or a Dual Clutch Transmission. Remote Climate Control is available on properly equipped models with fully automatic temperature control. See Owner's Manual for detailed specifications and limitations.



SONATA HYBRID LIMITED with Ultimate Package in Diamond White Pearl



HYBRID SYSTEM PERFORMANCE **193** NET HP

REMOTE CONTROL

With all it's capable of doing, Hyundai Blue Link can turn Sonata Hybrid into the command center of your digital life. Here's just one example: Using the Blue Link Connected Car app, you can start your Sonata Hybrid remotely and activate its climate controls to warm or cool the interior – all while you're standing in your kitchen drinking your morning coffee.³ Now that's what we call relaxed.

MODERN-DAY MISSION CONTROL

Most trip computers display average speed, fuel consumption and miles to empty – but Sonata Hybrid's technology display, with its color 4.2" LCD screen, goes further. It displays the status of vehicle operation and hybrid energy flow, plus available safety features such as Smart Cruise Control and Lane Departure Warning.

SIX-SPEED SHIFTRONIC®

Push the Sonata Hybrid's start button and press the accelerator pedal. Notice how natural it feels? That's our 6-speed SHIFTRONIC automatic transmission at work. It's a more linear and natural-feeling driving experience compared to the continuously variable transmissions used on some competing hybrid sedans.

BLUE DRIVE HYBRID SYSTEM

Sonata Hybrid switches seamlessly between a gasoline-powered engine and an electric motor to produce its steady surge of efficient power. A gasoline engine delivers the primary charge energy for the car's lithium-ion polymer batteries, while an enhanced regenerative braking system assists by harvesting kinetic energy and converting it into electricity.



2017

SONATA

KEY STANDARD FEATURES

- 185-hp, 2.4L GDI 4-cylinder engine
- 6-speed automatic transmission with SHIFTRONIC® controls
- Dual Flow Damper shock absorbers
- Drive Mode Select
- 16" alloy wheels
- Remote keyless entry with alarm
- Air conditioning
- AM/FM/SiriusXM/CD/MP3 audio system with 6 speakers
- Smartphone/USB auxiliary input jacks
- Bluetooth® hands-free phone system with phonebook transfer
- Tilt-and-telescopic steering wheel with audio, phone and cruise controls
- Energy-absorbing front seats



- 6-way manual height-adjustable passenger seat
- Power windows with driver's auto-down/up
- YES Essentials® stain-resistant premium cloth seating surfaces
- 60/40 split folding rear seats
- 7-airbag safety system
- ABS with Brake Assist
- Vehicle Stability Management
- Electronic Stability Control
- Traction Control System
- Driver's blind spot mirror
- Heated power side mirrors
- Tire Pressure Monitoring System
- Rear lip spoiler

2017

SONATA SE

Sonata Standard Features plus:

- + Rearview camera
- + Automatic headlights
- + 7" color touchscreen audio display
- + Android Auto™ support



- + Apple CarPlay™ support
- + HD Radio™ technology
- + Blue Link® Connected Car System

2017

SONATA ECO

SE Standard Features plus:

- + 178-hp, 1.6L turbocharged GDI 4-cylinder engine



- + 7-speed EcoShift® Dual Clutch Transmission with SHIFTRONIC® controls

2017

SONATA SPORT

SE Standard Features plus:

- + LED Daytime Running Lights
- + Sport 17" alloy wheels
- + Sport front grille
- + Sport front bumper fascia
- + Chrome-tipped dual exhaust
- + Sport rocker panels
- + Side mirrors with turn signal indicators
- + Chrome exterior accents



- + Carbon fiber appearance interior accents
- + Power driver seat with lumbar adjustment
- + Leatherette interior door panel inserts
- + Instrument cluster hood stitching

2017

SONATA LIMITED

Sport Standard Features plus:

- + Blind Spot Detection with Rear Cross-traffic Alert and Lane Change Assist
- + Power tilt-and-slide sunroof
- + LED taillights
- + Limited 17" alloy wheels
- + Chrome exterior door handles with welcome light
- + Hands-free smart trunk
- + Proximity Key entry with push button start
- + Woodgrain interior trim
- + Leather seating surfaces
- + 6-way power adjustable passenger seat
- + Heated front seats



- + Leather-wrapped steering wheel and shift knob
- + Leatherette door panel inserts with stitching
- + Dual automatic temperature control
- + Floor console-mounted rear vents
- + Auto-dimming inside rearview mirror with compass and HomeLink®
- + Premium door sill plates
- + Power front passenger auto-down/up window

TECH PACKAGE | Limited Standard Features plus:

- + HID headlights with Dynamic Bending Light
- + LED interior lights
- + 8" touchscreen navigation system
- + Infinity® premium audio system
- + Electroluminescent Gauge Cluster with 4.2" color LCD multi-info display
- + Integrated Memory System for driver seat and side mirrors
- + Ventilated front seats
- + Heated rear seats
- + Manual rear side sunshades
- + SiriusXM Travel Link® (complimentary trial)

ULTIMATE PACKAGE | Limited Tech Package Features plus:

- + Automatic Emergency Braking
- + Lane Departure Warning
- + Automatic High Beam Assist
- + Rear parking sensors
- + Smart Cruise Control with stop/start
- + Electronic Parking Brake with Automatic Vehicle Hold

SONATA CLASS-LEADING ADVANCED SAFETY



Blind Spot Detection with Lane Change Assist



Smart Cruise Control



Automatic Emergency Braking

EXTERIOR DIMENSIONS

	SONATA
• Wheelbase	110.4 in
• Overall Length	191.1 in
• Overall Width, excluding mirrors	73.4 in
• Overall Height	58.1 in
• Tread Width, front/rear [16" wheels]	63.5/63.8 in
• Tread Width, front/rear [17" wheels]	63.1/63.3 in
• Tread Width, front/rear [18" wheels]	62.9/63.1 in

INTERIOR DIMENSIONS

	SONATA
• Head Room, front/rear	40.4/38.0 in
• Legroom, front/rear	45.5/35.6 in
• Shoulder Room, front/rear	57.9/56.5 in
• Hip Room, front/rear	55.3/56.1 in
• Passenger Volume	106.1 cu ft
• Cargo Volume	16.3 cu ft
• Total Interior Volume	122.4 cu ft

EPA MILEAGE ESTIMATES

	(City/Highway/Combined)			
	2.4L SONATA/SE/SPORT/LIMITED	2.0T SPORT	2.0T LIMITED	1.6T ECO
• Horsepower	185 HP	245 HP	245 HP	178 HP
• Automatic Transmission (16" wheels)	25/36/29 MPG	-	-	28/36/31 MPG
• Automatic Transmission (17" wheels)	25/35/28 MPG	-	-	-
• Automatic Transmission (18" wheels)	-	22/31/26 MPG	21/30/24 MPG	-
• Fuel Tank Capacity	18.5 gal	18.5 gal	18.5 gal	18.5 gal
• EPA Classification	Large Car	Large Car	Large Car	Large Car

2017

SONATA SPORT 2.0T

Sport Standard Features plus:

- + 245-hp, 2.0L Turbo GDI 4-cylinder engine
- + Leather-wrapped D-cut steering wheel with paddle shifters
- + Sport shift knob
- + Dual Pinion Rack Mounted Motor-Driven Power Steering
- + Sport-tuned suspension and larger front brakes
- + Sport 2.0T 18" alloy wheels



- + Rear diffuser and quad exhaust tips
- + 3D Tech appearance interior trim
- + Sport seats with leather bolsters and cloth inserts
- + Heated front seats
- + Sport instrument cluster
- + Chrome interior door handles
- + Aluminum pedals

2017

SONATA LIMITED 2.0T

Sport 2.0T Standard Features plus:

- + HID headlights with Dynamic Bending Light
- + LED taillights
- + Power tilt-and-slide panoramic sunroof
- + High-gloss window surround
- + Limited 2.0T 18" alloy wheels
- + Chrome exterior door handles with welcome light
- + Proximity Key entry with push button start
- + Hands-free smart trunk
- + Automatic Emergency Braking
- + Blind Spot Detection with Rear Cross-traffic Alert and Lane Change Assist
- + Lane Departure Warning
- + Automatic High Beam Assist
- + Rear parking sensors
- + Smart Cruise Control with stop/start
- + Electronic Parking Brake with Automatic Vehicle Hold
- + Sport leather seating surfaces



- + Integrated Memory System for driver seat and side mirrors
- + 6-way power adjustable passenger seat
- + Ventilated front seats and heated rear seats
- + Manual rear side sunshades
- + Dual automatic temperature control
- + Floor console-mounted rear vents
- + LED interior lights
- + 8" touchscreen navigation system
- + Infinity® 400-Watt premium audio system
- + SiriusXM Travel Link® (complimentary trial)
- + Electroluminescent Gauge Cluster with 4.2" color LCD multi-info display
- + Auto-dimming inside rearview mirror with compass and HomeLink®
- + Leatherette door panel inserts with stitching
- + Premium door sill plates
- + Power front passenger auto-down/up window

2017

SONATA HYBRID SE

KEY STANDARD FEATURES

- 193-net hp, 2.0L GDI 4-cylinder hybrid engine
- 38 kW, permanent magnet high-power density motor
- 270V lithium-ion polymer battery
- 6-speed automatic transmission with SHIFTRONIC® controls
- Drive Mode Select
- 16" Eco-spoke alloy wheels
- LED Daytime Running Lights and LED taillights
- Automatic headlights
- Hands-free smart trunk with auto open
- Chrome exterior door handles with welcome light
- Proximity Key entry with push button start
- Heated power side mirrors with turn signal indicators
- 7" color touchscreen display audio
- Rearview camera
- AM/FM/SiriusXM/HD Radio/CD/MP3 audio system with 6 speakers
- Blue Link® Connected Car System



- Bluetooth® hands-free phone system with phonebook transfer
- Apple CarPlay™ support
- Android Auto™ support
- Smartphone/USB auxiliary input jacks
- Electroluminescent Gauge Cluster with 4.2" color multi-info LCD display
- Tilt-and-telescopic steering wheel with audio, phone and cruise controls
- Premium cloth seating surfaces
- YES Essentials® for beige cloth seats
- 6-way manual height-adjustable passenger seat
- Dual automatic temperature control
- Instrument cluster hood stitching
- Driver's blind spot mirror
- 7-airbag safety system
- ABS with Brake Assist
- Vehicle Stability Management
- Electronic Stability Control
- Traction Control System
- Energy-absorbing front seats
- Projector headlights
- Tire Pressure Monitoring System
- Rear lip spoiler

EXTERIOR DIMENSIONS

	SONATA HYBRID
• Wheelbase	110.4 in
• Overall Length	191.1 in
• Overall Width, excluding mirrors	73.4 in
• Overall Height	57.9 in
• Tread Width, front/rear [16" wheels]	63.5/63.8 in
• Tread Width, front/rear [17" wheels]	63.1/63.3 in

INTERIOR DIMENSIONS

	SONATA HYBRID
• Head Room, front/rear	40.4/38.0 in
• Legroom, front/rear	45.5/35.6 in
• Shoulder Room, front/rear	57.9/56.5 in
• Hip Room, front/rear	55.3/56.1 in
• Cargo Volume	13.3 cu ft
• Total Interior Volume	119.4 cu ft

2017

SONATA HYBRID LIMITED

HYBRID SE Standard Features plus:

- + 17" Eco-spoke alloy wheels
- + HID Xenon headlights
- + Blind Spot Detection with Rear Cross-traffic Alert
- + Leather-wrapped steering wheel and shift knob
- + Leatherette door panel inserts with stitching
- + Leather seating surfaces
- + 8-way power adjustable driver seat with lumbar support
- + 6-way power adjustable passenger seat



- + Integrated Memory System for driver seat and side mirrors
- + Ventilated front seats
- + Heated front seats
- + 60/40 split folding rear seats
- + Manual rear side sunshades
- + Auto-dimming inside rearview mirror with compass and HomeLink®
- + Premium door sill plates
- + Power front passenger auto-down/up window
- + Floor console-mounted rear vents

ULTIMATE PACKAGE | Limited Standard Features plus:

- + Lane Departure Warning
- + Forward Collision Warning
- + Automatic High Beam Assist
- + Rear parking sensors
- + Smart Cruise Control with stop/start
- + Power tilt-and-slide panoramic sunroof
- + High-gloss window surround
- + Electronic Parking Brake with Automatic Vehicle Hold
- + LED interior lights
- + Infinity® premium audio system
- + 8" touchscreen navigation system
- + SiriusXM Travel Link® (complimentary trial)

EPA MILEAGE ESTIMATES

(City/Highway/Combined)

	SONATA HYBRID
• Net Horsepower	193 HP
• Automatic Transmission [SE]	39/45/42 MPG
• Automatic Transmission [Limited]	38/43/40 MPG

SONATA HYBRID | PREMIUM FEATURES



Class-Exclusive
Smart Trunk



Best-In-Class
Passenger Volume



Ventilated Front
Seats

EXTERIOR COLORS | SONATA



Phantom Black

Scarlet Red

Shale Gray Metallic

Symphony Silver

Quartz White Pearl

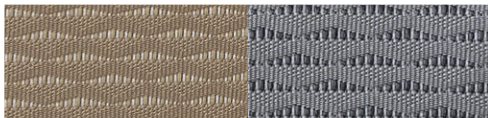
Lakeside Blue

Dark Truffle

Nouveau Blue

INTERIOR COLORS | SONATA

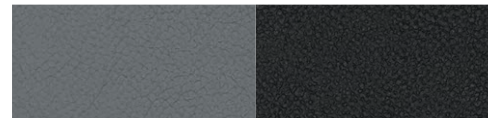
CLOTH | Standard, SE, Eco, Sport



Beige Cloth

Gray Cloth

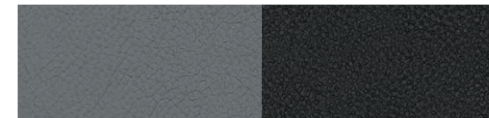
SPORT LEATHER BOLSTER | Sport w/Value Edition, Sport 2.0T



Gray Leather

Black Leather

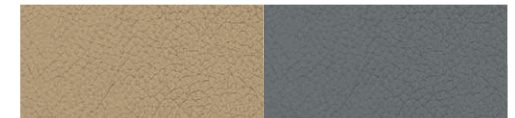
SPORT LEATHER | Limited 2.0T



Gray Leather

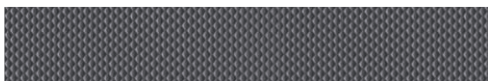
Black Leather

LEATHER | Limited



Beige Leather

Gray Leather



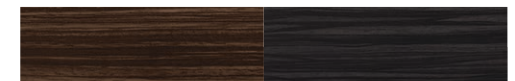
Metalgrain Appearance Accent



Carbon Fiber Appearance Accent



3D Tech Appearance Accent



Woodgrain Accent

Dark Woodgrain Accent

WHEELS | SONATA



16" Alloy Wheel
Sonata/SE/Eco

17" Alloy Wheel
2.4L Limited

17" Alloy Wheel
2.4L Sport

18" Alloy Wheel
Limited 2.0T

18" Alloy Wheel
Sport 2.0T

WHEELS | SONATA HYBRID



16" Alloy Wheel
Hybrid SE

17" Alloy Wheel
Hybrid Limited

EXTERIOR COLORS | SONATA HYBRID



Diamond White Pearl



Eclipse Black



Pewter Gray Metallic



Starlight Silver



Venetian Red Pearl



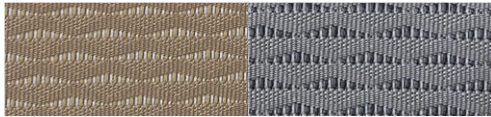
Graphite Blue Pearl



Seaport Mist

INTERIOR COLORS | SONATA HYBRID

CLOTH | Standard



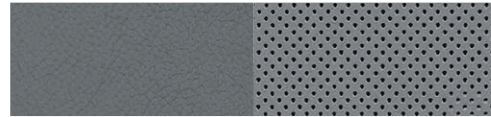
Beige Cloth

Gray Cloth

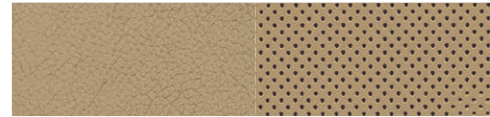


Metallic Paint Accent

LEATHER | Optional



Gray Leather



Beige Leather



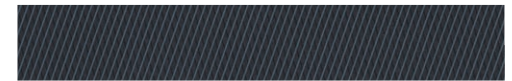
Blue Pearl Leather



Dark Woodgrain Accent



Woodgrain Accent



Insert Film Accent



MADE IN THE USA

Thirty years ago, a small company from a country not known for building cars came to the United States and began selling its first car. Ten years ago, Hyundai expanded its operations to include building cars in the U.S. when it opened the doors of its Hyundai Motor Manufacturing Alabama plant in Montgomery – one of the most advanced facilities of its kind in the world. More than 60 percent of the cars Hyundai sells in the U.S. are made here, including one of Hyundai's all-time best-selling models – the Sonata sedan.

HYUNDAIUSA.COM

Visit our website to learn more about Sonata and the entire Hyundai lineup. You'll also be able to delve deeper into Hyundai Blue Link, Hyundai Assurance and America's Best Warranty. There's a full suite of shopping tools at your fingertips to help you take the next steps, from a build-and-price configurator to a financing calculator and locator for vehicles in inventory at a Hyundai dealer near you. You can even use our website to take the most important step of all: Schedule a test-drive.



Our commitment to Hyundai owners doesn't end with the transfer of keys. Wherever the road takes you, we've got your back with Hyundai Assurance, an umbrella of services and benefits that includes America's Best Warranty, 24/7 Roadside Assistance, innovative safety and car care features...and more. For details, visit HyundaiAssurance.com.

HYUNDAI Sonata / Sonata Hybrid

AMERICA'S BEST WARRANTY

POWERTRAIN
LIMITED WARRANTY

10 YEARS
100,000 MILES

NEW VEHICLE
LIMITED WARRANTY

5 YEARS
60,000 MILES

ANTI-PERFORATION
WARRANTY

7 YEARS
UNLIMITED MILES

24/7 ROADSIDE
ASSISTANCE

5 YEARS
UNLIMITED MILES

HYBRID SYSTEM
COMPONENTS

10 YEARS
100,000 MILES

HYBRID BATTERY
WARRANTY

LIFETIME



See dealer for LIMITED WARRANTY details. Fuel economy estimated by EPA for comparison only. Mileage may vary. While the information contained in this brochure was correct at the time of printing, specifications and equipment can change. Feature comparisons based on competitor information available at the time of printing. No warranty or guarantee is being extended in this brochure, and Hyundai reserves the right to change product specifications and equipment at any time without incurring obligations. Some vehicles are shown with optional equipment. Specifications apply to U.S. vehicles only. Please contact your Hyundai dealer for current vehicle specifications. As part of Hyundai's commitment to a responsible environment, this brochure was printed using paper certified by the Forest Stewardship Council.® FSC® certification helps ensure that the highest social and environmental standards are met in the making of the paper we use, contributing to conservation, responsible management, and community-level benefits for people near the forests.

