



The Power to Surprise

2016
RONDO

RONDO

DON'T JUST ADAPT – THRIVE.

You like to keep things fluid – punch your own ticket. You need a car that can stay in sync with every twist and turn. With a form that's as inspired as its function. A car that puts emotion in motion. One that loves to be right in the middle of the action. With a sculpted look that takes versatility into the realm of inspired design. One that's sure to inspire you with an even more engaged approach to driving – and life. What are you waiting for? Get into the 2016 Kia Rondo. Then get really into it.



IT GIVES.
YOU TAKE.

You set your own agenda, through town and country and everywhere in-between. And you bring your own crew of family and friends along for the ride. Kia Rondo answers with available seating for up to seven. That's in addition to room for all the equipment you need to make things happen, from sports equipment to building supplies. There's nothing standing in your way. The 2016 Kia Rondo can take it. And then some.

//////////



There's no form vs. function debate with Rondo. It has all the bases covered with styling that's accentuated by available LED Light Bar taillights – a Kia signature design element. As for the function, Rondo is available in five and seven-passenger models, and offers up to 14 seating configurations to handle virtually any combination of people and cargo.

FUEL-EFFICIENT

Rondo's 2.0-litre gasoline direct injection (GDI) engine produces a robust 164 horsepower while delivering excellent fuel economy rated at 7.6 L/100 km Hwy and 10.1 L/100 km City.¹

FLEXSTEER™

An electric power steering (EPS) system is standard on all models and includes Kia's advanced FlexSteer™ technology that features three driver-selectable steering modes: Normal, Comfort, and Sport.

PEACE OF MIND

Rondo comes with a full complement of standard safety systems, including six airbags, four-wheel anti-lock disc brakes, Vehicle Stability Management (VSM) and Electronic Stability Control (ESC).

ADVANCED TECHNOLOGY

Available push-button start provides convenient operation. Front and rear parking sensors are also available to make parking easier in tight spaces.⁴



TIME WELL SPENT.

A BUILT-IN VIEW

Rondo's airy and spacious interior is made even brighter with a panoramic power sunroof on Rondo EX Luxury with Navigation models.

Getting to your destination is one thing. Getting there in comfort and style, surrounded by your favourite conveniences and amenities – that's when driving turns into a pursuit, not just a form of transportation. And Rondo is designed and equipped so you can make the very most of every moment. You can even top off the experience with available touches of luxury like heated front seats and leather trim. This is your time.



CONVENIENT UNDERFLOOR STORAGE⁷

Rondo is full of handy storage spaces, including underfloor compartments in the rear cargo area and in front of the second-row of seats – great places to stow loose items or hide valuables securely out of sight.



REAR AIR VENTILATION

Rear-seat passengers can also enjoy warm or cool air circulation thanks to rear air vents positioned at the back of the centre console.



COOLING GLOVEBOX

Keep beverages nicely chilled on the road with Rondo's cooling glovebox – a standard convenience on all automatic transmission models.



LED CARGO AREA FLASHLIGHT

When mounted in its cradle, the flashlight illuminates the cargo area. Remove it and you have a handy portable flashlight that automatically recharges when you snap it back into the cradle. It's available on Rondo EX models.



RETRACTABLE SUNSHADES

Retractable sunshades in the rear doors help reduce the glare and sunlight for second-row passengers – especially sleepy children in child safety and booster seats. This feature is available on 2016 Rondo EX models.

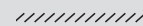


AIR-COOLED DRIVER SEAT

For added comfort in warm weather, the 2016 Rondo EX Luxury model is equipped with a standard air-cooled driver's seat that circulates refreshing air through the perforated leather seating surfaces.

TAKE THIS SHOW ON THE ROAD.

Performance at your fingertips. Rondo offers a very interactive approach to driving. From the driver-selectable gearing of the available six-speed Sportmatic® automatic transmission to the sophistication of the available multimedia interface, Rondo invites you to dial up the performance on so many levels.



TILT/TELESCOPIC STEERING WHEEL

Rondo's steering wheel easily adjusts position to match every driver's individual preferences.

STEERING WHEEL-MOUNTED CONTROLS

Your hands never have to leave the wheel with these standard controls for the cruise and audio systems, and to operate hands-free Bluetooth® connectivity.

MULTIMEDIA INTERFACE

Rondo EX Luxury models are available with Kia's sophisticated multimedia interface. It combines a dynamic display and brilliant graphics with touch-screen capabilities and speech recognition technology for precise control of multiple systems and functions. You can use your voice or the LCD touch-screen to control the onboard navigation³ and entertainment systems.



PUSH-BUTTON START

There's no need to search for the ignition key when you have the luxury of the standard Smart Key keyless push-button ignition switch on all Rondo EX and EX Luxury models.



AUTOMATIC COMFORT

Rondo EX models feature a standard dual-zone automatic temperature control system with separate set-it-and-forget-it temperature settings for the driver and front passenger. The system includes a Clean Air™ air ionizer to help prevent odours and particulates from entering the cabin air.



6-SPEED SPORTMATIC®

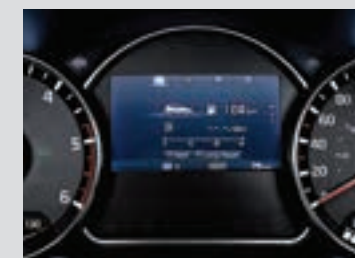
AUTOMATIC TRANSMISSION

A lightweight, compact transmission with excellent shift quality and refinement, the available Sportmatic® transmission includes a manual mode that lets you select gears for a sportier driving experience.



SUPERVISION TFT/LCD INSTRUMENT CLUSTER

This standard feature on Rondo EX Luxury models includes a high-visibility TFT/LCD screen positioned between the gauges to display essential vehicle information with user-customizable readouts.



International model shown.



BIG ON STYLE.

How can one car be this big on space inside, this compact on the outside and yet this big in personality? It's all a part of Kia's inventive approach to design. Sure, there's loads to like about Rondo's impressive versatility – and capacity. But the real kicker is the sporty styling, which takes on an even more dramatic flair with the addition of available Xenon High-Intensity Discharge (HID) headlights and 18-inch alloy wheels. Ready to make a really big impression?

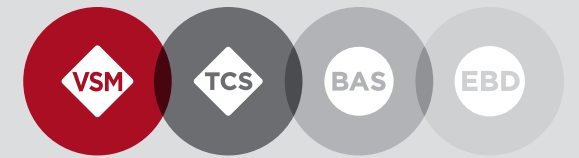


IT'S YOUR SIXTH SENSE.

It's all about increasing your awareness of any potential hazards around you. And it's achieved through the integration of a series of advanced electronic systems that automatically alert you to potential dangers and help you to avoid a collision. Sensors that help you keep your distance from adjacent parked cars, or wipers that turn on automatically when moisture is detected make for smart available additions. They're all part of Kia's comprehensive approach to safer driving.



PARKING SENSORS⁴ located in the rear bumper trigger a warning tone in the cabin that increases in intensity as your vehicle gets closer to an object. Standard on Rondo EX and available on LX models. Additional front parking sensors are included on EX Luxury models.



VEHICLE STABILITY MANAGEMENT

VSM monitors Rondo's response to your throttle, brake and steering inputs in tight corners and during evasive driving manoeuvres. If your input and the vehicle's response are out of sync, VSM briefly takes over to restore stability through precise brake, electric steering and engine control adjustments.

TRACTION CONTROL

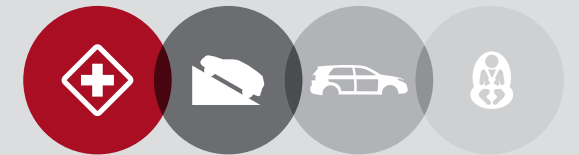
Rondo's standard Traction Control System (TCS) senses wheel spin during acceleration and uses engine-torque reduction and pulsed braking to slow the spinning wheel or wheels and then transfer torque to the wheels with the most traction.

BRAKE ASSIST

When the Brake Assist System (BAS) detects an emergency braking situation it instantly applies full braking force, faster than you might be able to, in order to help shorten overall stopping distance.

ELECTRONIC BRAKEFORCE DISTRIBUTION

EBD adjusts front-to-rear brake pressure to compensate for varying passenger/cargo loads and to deliver more confident braking performance.



SIX STANDARD AIRBAGS

Rondo protects you and your passengers with advanced dual front, side impact and curtain airbags with finely tuned sensors for the best possible performance. In combination, they help protect against head and chest injuries in moderate-to-severe impacts.⁵

HILL ASSIST CONTROL

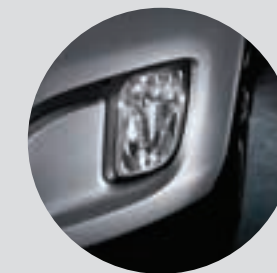
To help keep you from rolling backward when starting off on a steep hill, Hill Assist Control (HAC) automatically maintains braking pressure for up to two seconds after you take your foot off the brake pedal – enough time to transfer your foot from the brake to the accelerator pedal.

ENHANCED COLLISION SAFETY

Rondo's body structure provides strength and protection to help maintain the integrity of the passenger compartment in frontal, side and rear impacts.

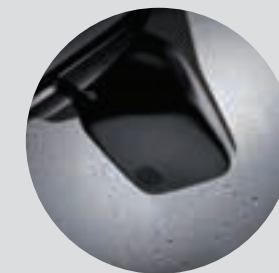
LATCH SYSTEM

Rondo comes equipped with an industry-standard LATCH (Lower Anchors and Tethers for Children) safety system that makes it easier to securely install a compatible child safety seat in any of the second-row seating positions.



LIGHTING SYSTEMS

Available fog lights and projection High Intensity Discharge (HID) headlights make it easier to see – and be seen – in the dark or in inclement weather.



RAIN SENSING WIPERS

These windshield wipers are automatically activated as soon as moisture is detected, for greater convenience and visibility. Standard on Rondo EX models.



REARVIEW CAMERA⁴

Located in the tailgate of all EX models, the rearview camera gives you a view of objects and obstacles behind you when you're backing up. Images are displayed on the LCD screen of the UVO system or multimedia interface, depending on how your Rondo is equipped.



KIA, DELIVERING ON A PROMISE.

At Kia, we make a promise to everyone who drives our vehicles – a promise to design, engineer and build our vehicles to the most rigorous, world-class standards. This promise guides the development of vehicles that embody Kia’s signature style, precision engineering, outstanding performance, innovative features and advanced safety systems. Our dedication to quality and value has been widely recognized – one reason why Kia has been named a Top 100 brand in Interbrand’s Best Global Brands 2014 report.

In addition, Kia earned two prestigious J.D. Power awards, one for Highest Ranked Large Car in Initial Quality in the U.S. for Cadenza and Highest Ranked Small SUV in Initial Quality in a Tie in the U.S. for Sportage.⁹ This honour recognizes our success at producing fuel-efficient and affordable vehicles. While the accolades are always welcome, our mission extends beyond impressing the industry or media. What makes us most proud is exceeding your expectations of a truly exemplary driving and ownership experience.



GT concept

STUNNING DESIGN

Under the direction of renowned President and Chief Design Officer Peter Schreyer — Kia vehicles have captured worldwide attention for their interior and exterior styling, which represents the collaborative work of designers who have created a look that makes every Kia recognizable at first sight. Today, the lineup consists of vehicles that fill owners as well as Kia’s designers with pride.

EXTENSIVE RESEARCH AND DEVELOPMENT

Kia’s R&D procedures are rigorous and exhaustive. At proving grounds around the world, vehicles undergo unrelenting tests. A world-class wind tunnel provides testing in winds up to 200 km/h. Utilizing heavy-rain-and-snowfall testing chambers and a road simulator, Kia puts its vehicles through punishing tests as part of a commitment to develop exceptionally durable and safe vehicles.

IMPRESSIVE WARRANTY PROGRAM

Kia engineers are passionate about producing vehicles that are exceptionally well-designed and reliable. Their dedication to quality and attention to detail give Kia the confidence to back every model with an outstanding warranty program.

TAKING ON THE COMPETITION

The Kia Racing team is dedicated to competing against world-class competition — and winning. That dedication is part of Kia’s belief that the knowledge gained in competition can be applied to the entire Kia lineup to provide you with vehicles that perform beyond your expectations. The Kia Racing team includes championship-winning drivers with proven track records, and after a strong start to the 2015 season, you can look for Kia in the winner’s circle at racetracks across North America in the future.



Official Partner

FIFA WOMEN’S WORLD CUP CANADA 2015

As the FIFA Official co-Automotive Partner, Kia is proud of its initiatives to promote soccer globally. This summer Canada will be hosting the 2015 Women’s World Cup with games played in venues from coast to coast bringing all Canadians together to cheer and show their excitement.

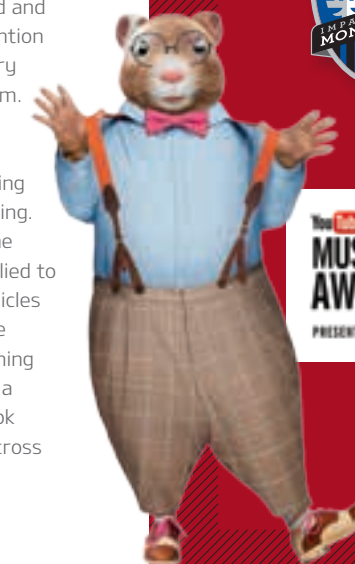


MAJOR LEAGUE SOCCER 2015

Kia is a proud founding partner of all three Canadian MLS teams, sharing a true passion for the game!

YOUTUBE MUSIC AWARDS PRESENTED BY KIA

Kia’s relationship with the YouTube Music Awards builds on the special relationship between music and drivers. It is demonstrated by Kia partnering with numerous music events around the globe. It’s just one more way that Kia stays in tune with the people who drive their vehicles.



FEATURES AND SPECIFICATIONS

Exterior	LX MT	LX Value AT	EX AT	EX Luxury
16" steel wheels	●	●	-	-
16" alloy wheels	-	○	-	-
17" alloy wheels	-	-	●	●
18" alloy wheels	-	-	-	○
P205/55R16 tires	●	●	-	-
P225/45R17 tires	-	-	●	●
P225/45R18 tires	-	-	-	○
Temporary spare tire	●	●	●	●
Signature Kia grille	●	●	●	●
Panoramic sunroof	-	-	-	○*
Projection headlights	●	●	●	●
Automatic headlights	-	○	●	●
Xenon high-intensity discharge (HID) headlights	-	-	-	○
Headlight washer nozzles	-	-	-	○
LED lightbar taillights	-	-	-	○
Fog lights	-	●	●	●
LED daytime running lights	-	-	●	●
Body-coloured sideview mirrors	●	●	●	●
Heated sideview mirrors	●	●	●	●
Power sideview mirrors	●	●	●	●
Automatic power folding sideview mirrors	-	-	●	●
Sideview mirror signal repeaters	-	-	●	●
Body-coloured exterior door handles	●	●	-	-
Chrome door handles and mouldings	-	-	●	●
Roof rails	-	○	●	●
Spoiler	●	●	●	●
Front and rear splash guards	●	●	●	●

Safety	LX MT	LX Value AT	EX AT	EX Luxury
Dual advanced front airbags	●	●	●	●
Dual front seat-mounted side airbags	●	●	●	●
Dual side curtain airbags	●	●	●	●
Front and rear adjustable headrests	●	●	●	●
4-wheel disc brakes	●	●	●	●
4-wheel anti-lock braking system (ABS)	●	●	●	●
Electronic parking brake	-	-	-	○
Electronic brake distribution (EBD)	●	●	●	●
Brake assist system (BAS)	●	●	●	●
Electronic stability control (ESC)	●	●	●	●
Vehicle stability management (VSM)	●	●	●	●
Traction control system (TCS)	●	●	●	●
Hill assist control (HAC)	●	●	●	●
Security system	●	●	●	●
Front and rear 3-point seatbelts	●	●	●	●
Front seatbelt pretensioners	●	●	●	●
Side-impact door beams	●	●	●	●
Impact-sensing door unlock	●	●	●	●
2 nd row lower anchors and top tethers for children (LATCH)	●	●	●	●
Child-safety rear door locks	●	●	●	●
Rear parking sensors ⁴	-	○	●	●
Front parking sensors ⁴	-	-	-	●
Rearview camera ⁴	-	-	●	●
Obstacle-detecting window (driver)	●	●	●	●
Obstacle-detecting windows (all)	-	-	●	●

Comfort & Convenience	LX MT	LX Value AT	EX AT	EX Luxury
Air conditioning	●	●	●	●
Dual-zone automatic climate control with auto de-fog	-	-	●	●
Clean air ionizer	-	-	●	●
AM/FM/CD/MP3 stereo system	●	●	●	●
SIRIUSXM [®] satellite radio (includes three trial months) ⁶	●	●	●	●
6-speakers	●	●	●	●
Premium audio (external amp & sub-woofer)	-	-	-	○
UVO™ infotainment system	-	-	●	●
Voice-activated navigation system with multimedia interface ⁷	-	-	-	○
Bluetooth [®] hands-free cell phone connectivity ²	●	●	●	●
AUX & USB inputs	●	●	●	●
Steering wheel audio controls with voice command function	●	●	●	●
Supervision cluster (TFT/LCD)	-	-	-	●
Power door locks	●	●	●	●
Two-turn unlock (driver side)	●	●	●	●
Central door lock	●	●	●	●
Keyless entry with panic feature	●	●	●	●
Smart Key with push button start	-	-	●	●
Power windows	●	●	●	●
Express up and down driver's window	●	●	●	●
Day/night rearview mirror	●	●	-	-
Auto-dimming rearview mirror	-	-	●	●
Conversation mirror*	-	●	●	●
Illuminated vanity mirrors	-	●	●	●
Variable intermittent front wipers	●	●	●	●
Rain sensing wipers	-	-	●	●
Windshield wiper de-icer	-	●	●	●
Tilt and telescopic steering wheel	●	●	●	●
Heated steering wheel	-	-	●	●
Electric power steering (EPS)	●	●	●	●
FlexSteer™ driver selectable steering assist	●	●	●	●
Steering wheel mounted cruise control	●	●	●	●
Cooling glovebox	-	●	●	●
Washer fluid warning light	●	●	●	●
Escort lights	●	●	●	●
Trip computer	●	●	●	●
Map light with sunglass holder	●	●	●	●
Active ECO system	-	●	●	●

Seating & Trim	LX MT	LX Value AT	EX AT	EX Luxury
5-seater	●	●	●	-
7-seater	-	○	○	●
Cloth seats	●	●	-	-
Leather seats	-	-	●	●
Heated front seats	-	●	●	●
Heated 2 nd row seats	-	-	-	●
Air-cooled driver's seat	-	-	-	●
Height adjustable driver's seat	●	●	●	●
Power driver's seat with lumbar support	-	-	●	●
Power extendable driver seat leg cushion	-	-	●	●
60:40 folding 2 nd row seat	●	●	●	●
50:50 folding 3 rd row seat	-	○	○	●
Black headliner	-	-	-	●
Centre console armrest	●	●	●	●
2 nd row centre armrest	●	●	●	●
Leather-wrapped steering wheel	-	○	●	●
Leather-wrapped gear shift knob	-	○	●	●
Black high gloss interior accents	-	-	●	●
Chrome interior door handles	●	●	●	●
Rear door sunshades	-	-	●	●
2 nd row floor storage	●	●	●	●
Portable cargo flashlight	-	-	●	●
Cargo screen and luggage net	-	-	●	●

● = Standard ○ = Available - = Not available AT = Automatic transmission

*Conversation mirror is not available when Rondo is equipped with a panoramic sunroof.

Engine	
Type	2.0L, GDI, inline 4-cylinder, aluminum block and head
Valve train	16-valve, DOHC, Dual-cam Variable Valve Timing (D-CVVT)
Horsepower	164 hp @ 6,500 rpm
Torque	156 lb.ft. @ 4,700 rpm
Compression ratio	11.5:1
Intake	Variable Intake System (VIS), Electronic Throttle Control (ETC)
Transmission	6-speed manual transmission; Available 6-speed Sportmatic automatic transmission

Dimensions, mm (in.)

Wheelbase	2,750 (108.3)
Length	4,525 (178.1)
Width	1,805 (71.1)
Height	1,610 (63.4)
Ground clearance	151 (5.9)
Head room - 1 st /2 nd /3 rd row (if applicable)	1,035/1,002/867 (40.7/39.4/34.1)
Shoulder room - 1 st /2 nd /3 rd row (if applicable)	1,438/1,440/1,313 (56.6/56.7/51.7); With 2 nd row sunshade: 1,423 (56)
Leg room - 1 st /2 nd /3 rd row (if applicable)	1,034/940/707 (40.7/37/27.8)

Body & Chassis

Layout	Front engine, front wheel drive
Body type	Steel unibody
Front suspension	Independent, MacPherson strut, stabilizer bar
Rear suspension	Coupled torsion beam axle with shock absorber
Steering	Electric power steering (EPS), FlexSteer™

Curb Weight, kg (lb.)	5-seater	7-seater
Manual transmission	1,445 (3,185)	-
Automatic transmission	1,477 - 1,503 (3,256-3,313)	1,505 - 1,581 (3,318-3,485)

Brakes

Type	4-wheel disc, electronic brake distribution (EBD)
ABS	4-wheel
Front, mm (in.)	300 (11.8) vented discs
Rear, mm (in.)	284 (11.2) solid discs

Capacities, L (cu. ft.)

Passenger volume (5/7-seater)	2,893/3,698 (102.2/130.6)
Cargo volume (behind 1 st row)	1,840 (65)
Cargo volume (behind 2 nd row)	912 (32.2)
Cargo volume (behind 3 rd row)	232 (8.2)
Fuel tank capacity, L (imp gal)	58 (34.7)

Fuel Economy, Highway/City, L/100km

Manual transmission	7.8/10.4
Automatic transmission	7.6/10.1

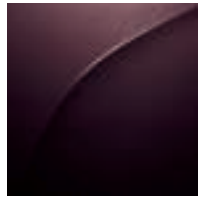


Starting with the 2015 model year, Natural Resources Canada in conjunction with the automotive manufacturers, have introduced a new testing procedure that will result in higher fuel consumption ratings that are more representative of everyday driving. Kia Canada is one of the first automotive manufacturers to implement the new testing practice and would like to ensure you fully understand the difference. The new procedure incorporates 3 additional test cycles that account for air conditioner usage, cold temperature operation, and higher speeds with more rapid acceleration and braking.

To learn more, please visit: <http://oee.nrcan.gc.ca/for-rcf/public/index-e.cfm>

EXTERIOR COLOURS

Black Cherry (P)
BC / BL / BEL



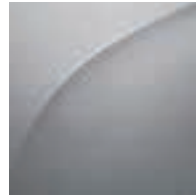
Sterling (M)
BC / BL



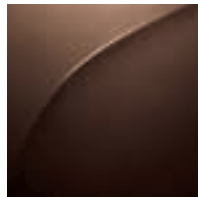
Polar
BC / BL / BEL



Titanium (M)
BC / BL



Galaxy Brown (M)
BC / BL



Fathom Blue (P)
BC / BL



Inferno Red (M)
BC / BL



INTERIOR COLOURS

Black cloth



Black leather



Beige leather



WHEELS

16" steel
wheel cover



16" alloy wheel



17" alloy wheel



18" alloy wheel



M = Metallic, P = Pearl, BC = Black cloth, BL = Black leather, BEL = Beige leather

The exterior and interior colours in this brochure are as close to the actual vehicle production colours as the printing process allows.

Get the points.

Kia Member Rewards is an exclusive rewards program for Kia customers.

As a Kia Rewards Member, you'll earn points with every dollar you spend on maintenance service, parts and accessories at your servicing Kia dealer. Those Reward Points can be redeemed for discounts on future purchases – including the purchase of a new Kia. Plus earn Bonus Points on select items and services to collect rewards even faster.

Kia Member Rewards No-Charge Benefits include:

- Fuel fill-up with the delivery of your new Kia vehicle

Become a Kia Premium Rewards Member: Ask your Kia Dealer how you can enjoy even more benefits.

Enroll Today: Becoming a Kia Rewards Member is easy.

See your Kia Dealer today to join.

Visit rewards.kia.ca for full terms and conditions.



- Local shuttle service
- Multi-point vehicle inspection with every service visit
- Windshield washer fill-up with every paid service
- Windshield wiper installation with wiper purchase
- Preferential rates on car rentals, nationwide
- 24/7 Roadside Assistance for your vehicle under Kia's 5-year/100,000 km warranty or Certified Pre-Owned warranty
- Email notification of exclusive Kia specials and events – a great way to earn Reward Points and save on future purchases



We've got you covered.

At Kia, we believe peace of mind should come standard with every vehicle we make. That's why we back every model with one of the best warranties in the industry.

Our outstanding warranty coverage includes:

5-year/100,000 km – Worry-free comprehensive warranty covering virtually the entire vehicle⁸

5-year/100,000 km – Powertrain warranty covering the engine, transmission, axles, differentials and driveshafts⁸

5-year/100,000 km – Roadside assistance covers you in case of mechanical breakdown anywhere in North America⁸

5-year/unlimited km – Anti-perforation warranty on body sheet metal defects in material/workmanship⁸

For more information visit kia.ca or call 1-877-542-2886

1. Ratings shown for models with automatic transmission. Actual fuel consumption may vary. These estimates are based on the Government of Canada's approved criteria and testing methods. Refer to the Government of Canada publication EnerGuide Fuel Consumption Guide. See kia.ca for fuel economy estimates. 2. The Bluetooth® word mark and logos are registered trademarks owned by Bluetooth SIG, Inc. A compatible Bluetooth wireless technology-enabled cell phone is required to use Bluetooth hands-free wireless technology. 3. When equipped with the navigation system, French voice commands may be limited. 4. The rearview camera or parking sonar systems are not substitutes for proper and safe driving procedures. Always drive safely and use caution when parking your vehicle. 5. Always drive safely and use caution. For maximum protection, always wear your seat belt. 6. SIRIUSXM logo and related marks are trademarks of SIRIUSXM Satellite Radio Inc. Service available in the 10 provinces and three territories of Canada, and the 48 contiguous states of the U.S. Monthly subscription sold separately after three trial months. 7. Rear cargo underfloor storage compartment may vary by trim. 8. The Kia 5-year/100,000-km warranty includes various warranties and roadside assistance. Some restrictions apply. For more information call us at 1-877-542-2886 or visit to kia.ca. 9. Kia Sportage received the lowest number of problems per 100 vehicles among small SUVs in a tie in the proprietary J.D. Power 2014 U.S. Initial Quality StudySM. Kia Cadenza received the lowest number of problems per 100 vehicles among large cars in the proprietary J.D. Power 2014 U.S. Initial Quality StudySM. The 2014 study is based on responses from 86,118 new-vehicle owners, measuring 239 models and opinions after 90 days of ownership. Proprietary study results are based on experiences and perceptions of owners surveyed in February-May 2014. Your experiences may vary. Visit jdpower.com

 facebook.com/kiacanada

 twitter.com/kiacanada

 youtube.com/kiacanada

kia.ca



The Power to Surprise

RONDO

All information contained herein was accurate and correct at the time of printing. Kia Canada Inc. reserves the right to make changes at any time without notice, and without any obligations as to colours, materials, specifications, features, accessories, packages, models and any applicable programs. Some vehicles shown may include optional equipment or may not be exactly as shown. Kia Canada Inc., by the publication and dissemination of this material, does not create any warranties, either expressed or implied, to any Kia products. See your Kia dealer or website for further details. Reproduction of the contents of this material without the expressed written approval of Kia Canada Inc. is prohibited. © Copyright 2015 Kia Canada Inc. Printed in Canada, June 2015.

Part# 99999 03A4E16