



The Power to Surprise

2016
SPORTAGE

SPORTAGE

WANT VS.
NEED.
HOW ABOUT
BOTH?

What's on your checklist for your next vehicle? Sure, all the "must haves" need to be covered – safety, fuel efficiency and storage capacity. If you're looking for a compact crossover, Sportage is certain to fill all those checkboxes. But what really separates it from the pack is how it scores on so many other levels, starting with its sporty look. Not surprising for a vehicle called Sportage. What's also going to grab your attention is a lengthy list of features that turn driving into a time you really look forward to, from dialed up performance to an available UVO infotainment system. As for quality, it doesn't get any better than this: Sportage was named the Highest Ranked Small SUV in Initial Quality in a Tie in the U.S. by J.D. Power and Associates.¹⁰ The 2016 Kia Sportage. We're not talking just satisfaction here, we're talking enthusiasm.

//////////



YOU LIVE IT.
YOU DRIVE IT.

//////////

An outstanding vehicle isn't designed around a frame, or a series of parts – it's designed around a lifestyle. It's all about knowing how you'll use your vehicle – what you like, and what you don't. There's lots to like about the Sportage, whether it's the charge you'll get out of the SX model's 260-horsepower turbocharged 2.0-litre Gasoline Direct Injection (GDI) 4-cylinder engine. Or the open air feel of the available panoramic sunroof. Or the ability to use voice commands to operate the available multimedia interface. Very thoughtful.

SOLID PERFORMANCE

Sportage LX and EX models are now equipped with a direct-injected 2.4-litre (GDI) engine that provides outstanding acceleration and fuel efficiency. SX models pack the driving punch of a turbocharged 2.0-litre gasoline direct injection (GDI) 4-cylinder rated at an impressive 260 horsepower.

SMOOTH, PRECISE HANDLING

For smooth performance, a four-wheel independent suspension features front MacPherson struts and a rear multi-link design. All Sportage models are equipped with dynamic dampers, providing a remarkably smooth ride and agile handling.

INNOVATIVE TECHNOLOGY

An available in-dash navigation system¹ keeps you going in the right direction, while the rearview camera that's included helps you avoid obstacles behind you, as does an available back-up warning system.



IN YOUR COMFORT ZONE. AND IN THEIRS.

Temperature control is a vital part of comfort. No doubt that Kia gets that message loud and clear. Beyond Sportage's standard heated front seats, there's available air-cooling in the front seats. And dual-zone temperature controls on EX and SX let you settle those "too hot, too cold" arguments of the past. You'll appreciate a different form of comfort when you settle into your preferred seating position using the power-adjustable driver's seat on EX and SX. You cool with that?



PANORAMIC SUNROOF

The available panoramic sunroof operates with tilt and slide efficiency, while featuring built-in safety mechanisms to prevent wandering hands from getting trapped.



HEATED AND COOLED SEATS

Standard heated front seats and available heated rear seats help ensure comfortable driving in cold weather. Enjoy optimal comfort in warm weather with available air-cooled front seats that circulate cool air through perforations in the seat leather.



60/40 EASY-FOLD REAR SEAT

The Sportage doesn't just provide ample room for you to stow your gear, but thanks to 60:40 split-folding rear seats, you can carry luggage of all shapes and sizes.



DUAL-ZONE AUTOMATIC TEMPERATURE CONTROL

Temperature control on EX and SX allows the driver and front passenger to set their own climate zones by adjusting their own temperature level.



CONCEALED STORAGE

An available spacious compartment hidden beneath the cargo floor provides plenty of room for all kinds of equipment. The removable tray keeps any loose items neatly organized.



COOLING GLOVE BOX

Along with providing a spot to carry small items, Sportage EX Luxury and SX Luxury feature a cooling glove box that lets you keep refreshments chilled.

IT PUSHES ALL THE RIGHT BUTTONS.

Convenience. Safety. Entertainment. Comfort. Sportage lets you push the right buttons to get the most out of your driving time. That begins with the handy available push-button starter – no key required. Parking is made that much easier by features like the available rearview camera and back-up warning system.² As for connecting and controlling all your devices and entertainment choices, there's the advanced multimedia interface on EX and SX. Is it pushing your buttons?



1. YOUR MUSIC, YOUR WAY
Sportage comes with AUX and USB audio ports and is compatible with your standard iPod^{®3} cable. Sportage is also equipped with standard hands-free Bluetooth^{®5} connectivity.

2. MULTIMEDIA INTERFACE
Sportage comes available with Kia's sophisticated multimedia interface. It combines a dynamic display and brilliant graphics with touch-screen capabilities and speech recognition technology for precise control of multiple systems and functions. You can use your voice or the LCD touch-screen to control the onboard navigation¹ and entertainment systems.

3. PUSH-BUTTON START
Start or stop the engine at the push of a button with the available Smart Key remote – even with the key fob in a pocket or bag. It's standard on Sportage EX and SX models.

4. BACK-UP WARNING SYSTEM²
An available sonar system, is concealed in the rear bumper. When you back up, an audible warning is given if the system detects objects behind your vehicle.



International model shown.

EXHILARATION GUARANTEED.

Is it too much to ask for exciting performance from a crossover? Not if it's named Sportage. It's a sporty car in the form of a crossover. And it really goes. Sportage LX and EX get off the line with a 182-horsepower 2.4L Gasoline Direct Injection (GDI) engine. Or you can boost the performance with the Sportage SX. It has a turbocharged 2.0L GDI inline four-cylinder engine that pumps out a pavement-grabbing 260 horsepower. No matter which model you choose, you'll enjoy the sporty handling of the four-wheel independent suspension. Ready to really go?

The available 6-speed Sportmatic transmission provides smooth, virtually seamless shifting. It allows you to choose fully automatic mode or, for a sportier driving experience, clutch-free manual shifting.



POWER AND EFFICIENCY

Both Sportage engines employ Dual Cam Variable Valve Timing (CVVT) that automatically adjusts valve timing to provide increased power, reduce exhaust emissions and enhance fuel efficiency.

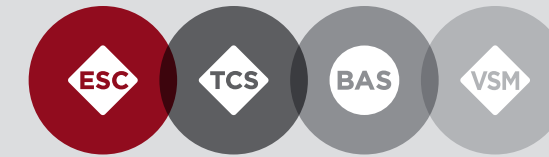
ALL-WHEEL DRIVE

Sportage has front-wheel or available Dynamax™ all-wheel drive. The AWD system uses electronic sensors to monitor road conditions, and then, for enhanced traction and control, helps distribute power to the appropriate wheels.



SAFETY. IT ALL STARTS WITH CONTROL.

Electronic Stability Control (ESC). Traction Control System (TCS). Brake Assist System (BAS). Vehicle Stability Management system (VSM). They sound like dry technical terms – until you actually put them to use. What they each do is help you maintain control even in difficult conditions and many emergency braking situations. They work together to help keep you safe. That frees you up to concentrate on keeping those around you safe when the going gets tough.



ELECTRONIC STABILITY CONTROL

Electronic Stability Control (ESC) monitors Sportage's response to your throttle, brake and steering inputs in tight corners and during evasive-maneuvre situations. If the input and response are out of sync, ESC briefly takes over to restore stability through precise brake and engine-control interventions.

BRAKE ASSIST SYSTEM

If the Brake Assist System (BAS) detects emergency braking, based on how quickly you step on the brake pedal, it instantly applies full braking force, helping shorten your overall stopping distance.

TRACTION CONTROL

Sportage's standard Traction Control System (TCS) senses wheel spin during acceleration and uses engine-torque reduction to slow the spinning wheel or wheels and transfer torque to the wheels that have the most traction.

VEHICLE STABILITY MANAGEMENT SYSTEM²

The Vehicle Stability Management system (VSM) senses a lateral skid and intervenes to help you regain control and return your vehicle to its intended path.



HILL ASSIST CONTROL

To help keep you from rolling backward when starting off on a steep hill, Hill Assist Control (HAC) automatically maintains braking pressure for up to two seconds after you take your foot off the brake pedal – enough time for engine power to move you forward.

FRONT ACTIVE HEADRESTS

In the event of certain rear collisions, Sportage's active front headrests move forward, helping to reduce the likelihood of whiplash injuries.

DOWNHILL BRAKE CONTROL

When descending a steep slope, the Downhill Brake Control (DBC) system automatically maintains a steady 8 km/h forward speed without the need for you to step on the accelerator or brake pedals.

REINFORCED BODY

The side doors on Sportage are reinforced with steel beams to help absorb impact energy and deflect it away from passengers. The A and B pillars (front and middle support pillars) are also reinforced to help strengthen the body structure.

LATCH SYSTEM

The standardized LATCH (Lower Anchors and Tethers for Children) system makes it easier to securely install a compatible child seat in any of the three rear seating positions.

PREPARED FOR THE UNEXPECTED

Improved interior cabin safety is delivered through the use of high tensile strength steel reinforcing the front, rear and sides, oversized bumper beams, a ringed structure at the centre pillar area, and a chassis design that disperses impact along a number of different paths.



AWD TO THE MAX

The Sportage comes with available Dynamax™ Intelligent All-Wheel Drive (AWD) that can actually anticipate wheel slippage before it occurs and then engage automatically to help maintain better traction and control in all kinds of weather experienced here in Canada.



KIA, DELIVERING ON A PROMISE.

At Kia, we make a promise to everyone who drives our vehicles – a promise to design, engineer and build our vehicles to the most rigorous, world-class standards. This promise guides the development of vehicles that embody Kia’s signature style, precision engineering, outstanding performance, innovative features and advanced safety systems. Our dedication to quality and value has been widely recognized – one reason why Kia has been named a Top 100 brand in Interbrand’s Best Global Brands 2014 report.

In addition, Kia earned two prestigious J.D. Power awards, one for Highest Ranked Large Car in Initial Quality in the U.S. for Cadenza and Highest Ranked Small SUV in Initial Quality in a Tie in the U.S. for Sportage.¹⁰ This honour recognizes our success at producing fuel-efficient and affordable vehicles. While the accolades are always welcome, our mission extends beyond impressing the industry or media. What makes us most proud is exceeding your expectations of a truly exemplary driving and ownership experience.



GT concept

STUNNING DESIGN

Under the direction of renowned President and Chief Design Officer Peter Schreyer — Kia vehicles have captured worldwide attention for their interior and exterior styling, which represents the collaborative work of designers who have created a look that makes every Kia recognizable at first sight. Today, the lineup consists of vehicles that fill owners as well as Kia’s designers with pride.

EXTENSIVE RESEARCH AND DEVELOPMENT

Kia’s R&D procedures are rigorous and exhaustive. At proving grounds around the world, vehicles undergo unrelenting tests. A world-class wind tunnel provides testing in winds up to 200 km/h. Utilizing heavy-rain-and-snowfall testing chambers and a road simulator, Kia puts its vehicles through punishing tests as part of a commitment to develop exceptionally durable and safe vehicles.

IMPRESSIVE WARRANTY PROGRAM

Kia engineers are passionate about producing vehicles that are exceptionally well-designed and reliable. Their dedication to quality and attention to detail give Kia the confidence to back every model with an outstanding warranty program.

TAKING ON THE COMPETITION

The Kia Racing team is dedicated to competing against world-class competition — and winning. That dedication is part of Kia’s belief that the knowledge gained in competition can be applied to the entire Kia lineup to provide you with vehicles that perform beyond your expectations. The Kia Racing team includes championship-winning drivers with proven track records, and after a strong start to the 2015 season, you can look for Kia in the winner’s circle at racetracks across North America in the future.



Official Partner

FIFA WOMEN’S WORLD CUP CANADA 2015

As the FIFA Official co-Automotive Partner, Kia is proud of its initiatives to promote soccer globally. This summer Canada will be hosting the 2015 Women’s World Cup with games played in venues from coast to coast bringing all Canadians together to cheer and show their excitement.

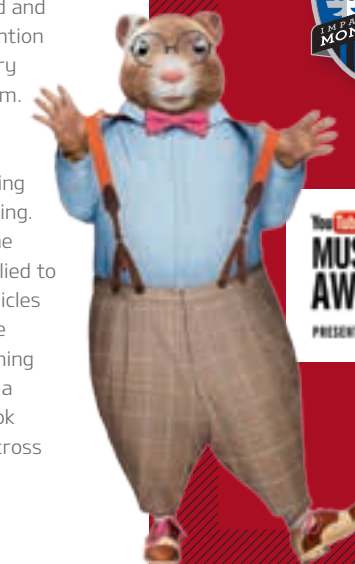


MAJOR LEAGUE SOCCER 2015

Kia is a proud founding partner of all three Canadian MLS teams, sharing a true passion for the game!

YOUTUBE MUSIC AWARDS PRESENTED BY KIA

Kia’s relationship with the YouTube Music Awards builds on the special relationship between music and drivers. It is demonstrated by Kia partnering with numerous music events around the globe. It’s just one more way that Kia stays in tune with the people who drive their vehicles.



FEATURES AND SPECIFICATIONS

Exterior	LX	EX	SX
16" alloy wheels	●	–	–
17" machined-finish alloy wheels	–	○	–
18" machined-finish alloy wheels	–	○	–
18" machined-finish sport alloy wheels	–	–	●
P215/70R16 tires	●	–	–
P225/60R17 tires	–	○	–
P235/55R18 tires	–	○	●
Temporary spare tire	●	●	●
Panoramic sunroof	–	LUX	LUX
Projection headlights	●	●	○
Xenon high-intensity discharge headlights	–	–	LUX
LED front positioning lights	●	–	–
LED daytime running lights	–	●	●
LED lightbar taillights	–	LUX	LUX
Fog lights	●	●	●
Signature Kia grille	●	●	–
Kia sport grille	–	–	●
Dual power heated body-colour side mirrors	●	●	●
Power folding side mirrors	–	●	●
Side mirror-integrated turn signals	○	●	●
Deep-tint privacy glass	●	●	●
Solar glass	–	●	●
Chrome-coated door handles	–	●	●
Variable intermittent windshield wipers	●	●	●
Front windshield wiper de-icer	●	●	●
Rear window wiper	●	●	●
Rear window defroster	●	●	●
Front and rear splash guards	●	●	●
Spoiler	–	●	●
Roof rails	○	●	●
Dual exhaust	–	–	●

Seating & Trim

Cloth seats	●	○	●
Leather seats	–	LUX	LUX
Heated front seats	●	●	●
Heated rear seats	–	–	LUX
Air-cooled front seats	–	LUX	LUX
2 nd row 60:40-split folding seating	●	●	●
Power adjustable driver's seat with lumbar support	–	●	●
Leather-wrapped steering wheel	–	●	●
Leather-wrapped gear shift knob	–	●	●
2 nd row centre armrest with cupholders	○	●	●
Front- and rear-door map pockets	●	●	●
Premium door scuff plate	–	LUX	LUX
Metal-painted inside door handles	●	●	●
Metal-grain interior accents	●	●	●

● = Standard ○ = Optional – = Not Available
 AT = Automatic transmission LUX = Luxury package
 * = Only with Luxury Navigation package

Comfort & Convenience	LX	EX	SX
Air conditioning with cabin air filter	●	●	●
Dual-zone fully automatic temperature control with ionized air filtration system	–	●	●
Power door locks	●	●	●
Folding key	●	–	–
Remote keyless entry with panic function	●	●	●
Smart Key with push-button start	–	●	●
Steering wheel-mounted voice, audio and cruise controls	●	●	●
Active ECO system	–	AT	●
Power windows with one-touch driver's express down	●	–	–
Power windows with one-touch driver's express up/down	–	●	●
6-speaker AM/FM/CD/MP3 stereo system	●	○	–
Premium Infinity™ 7-speaker stereo system ⁶	–	○*	LUX
SIRIUSXM [®] satellite radio (includes three trial months) ⁷	●	●	●
Multimedia interface with navigation system ¹	–	○*	LUX
AUX and USB input ports	●	●	●
UVO infotainment system ^{4,9}	–	●	●
Bluetooth [®] hands-free cell phone connectivity ⁵	●	●	●
FlexSteer™ customizable steering system	–	LUX	LUX
Tilt and telescopic steering column	●	●	●
Heated steering wheel	–	LUX	LUX
Trip computer	○	●	●
Illuminated vanity mirrors with cover	○	●	●
Auto-dimming rearview mirror	–	●	●
Centre console storage compartment with armrest	●	●	●
Cooling glove box	–	LUX	LUX
Front map lamp with sunglass holder	●	●	●
Cargo area light	●	●	●
Rear cargo screen and luggage net	–	–	LUX

Safety

	LX	EX	SX
Dual advanced front airbags	●	●	●
Dual front seat-mounted side airbags	●	●	●
Dual side curtain airbags with rollover sensor	●	●	●
Active front headrests	●	●	●
Height-adjustable front and 2 nd row headrests	●	●	●
4-wheel disc brakes	●	●	●
4-wheel anti-lock braking system (ABS)	●	●	●
Electronic brake-force distribution (EBD)	●	●	●
Brake assist system (BAS)	●	●	●
Electronic stability control (ESC)	●	●	●
Vehicle stability management (VSM) ²	●	●	●
Hill assist control (HAC)	●	●	●
Downhill brake control (DBC)	●	●	●
Traction control system (TCS)	●	●	●
Security system	●	●	●
Height-adjustable front seatbelts with pretensioners	●	●	●
Auto light control	●	●	●
Impact-sensing auto door unlock	●	●	●
Child-safety rear door locks	●	●	●
Lower anchors and tethers for children (LATCH)	●	●	●
Rearview camera ²	–	●	●
Rear parking sonar ²	–	●	●

Engine	LX, EX, EX Luxury	SX
Type	2.4L, GDI 4-cylinder, aluminum block and head	2.0L, turbocharged GDI 4-cylinder, aluminum block and head
Valve train	DOHC, 4 valves per cylinder, Dual-cam Variable Valve Timing (CVT)	DOHC, 4 valves per cylinder, Dual-cam Variable Valve Timing (CVT)
Horsepower	182 hp @ 6,000 rpm	260 hp @ 6,000 rpm
Torque	177 lb.-ft. @ 4,000 rpm	269 lb.-ft. @ 1,850-3,000 rpm
Compression ratio	11.3:1	9.5:1
Intake	Variable Intake System (VIS), Electronic Throttle Control (ETC)	Twin-scroll turbocharger, Electronic Throttle Control (ETC)
Drive type	Front wheel drive (FWD); available Dynamax™ all-wheel drive (AWD)	Dynamax™ all-wheel drive (AWD)
Fuel management	Active-ECO (Automatic transmission)	Active-ECO (Automatic transmission)
Transmission	6-speed manual, Available 6-speed Sportmatic automatic	6-speed Sportmatic automatic

Dimensions, mm (in.)

Wheelbase	2,640 (103.9)
Length	4,440 (174.8), SX: 4,450 (175.2)
Width	1,855 (73.0)
Height	1,635 (64.3)
Ground clearance	172 (6.8)
Approach/departure angle	28.1° / 28.2°
Head room - (front/rear)	992/977 (39.1/38.5)
Shoulder room - (front/rear)	1,440/1,400 (56.7/55.1)
Leg room - (front/rear)	1,051/963 (41.4/37.9)
Hip room - (front/rear)	1,364/1,246 (53.7/49.0)

Body & Chassis	
Layout	Front engine, FWD or AWD
Body type	Unibody
Front suspension	MacPherson struts with coil springs and dynamic dampers
Rear suspension	Multi-link with dynamic dampers
Steering	Electric power steering (FlexSteer™ on EX Luxury and SX Luxury)

Brakes

Type	4-wheel disc
ABS	4-wheel, 4-channel, 4-sensor
Front, mm (in.)	300 (11.8) vented discs
Rear, mm (in.) FWD/AWD	284 (11.2) discs

Curb Weight, kg (lb.)	LX, EX, EX Luxury	SX
Manual transmission	1,471 (3,243)	–
Automatic transmission	1,554 - 1,620 (3,426 - 3,571)	1,662 (3,664)

Capacities, L (cu. ft.)

Interior volume	2,818 (99.5)
Cargo capacity	740 (26.1)
Cargo capacity, rear seats down, L (cu. ft.)	1,547 (54.6)
Maximum towing capacity, kg (lbs.)	2,000 (907)
Fuel tank capacity, L (Imp. gal.)	58 (12.8)

Fuel Economy, Highway/City, L/100km	LX, EX, EX Luxury	SX
Manual transmission (FWD)	9.2/12.9	–
Automatic transmission (FWD)	8.3/11.4	–
Automatic transmission (AWD)	9.3/12.0	9.7/12.6



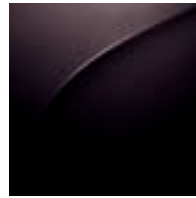
Starting with the 2015 model year, Natural Resources Canada in conjunction with the automotive manufacturers, have introduced a new testing procedure that will result in higher fuel consumption ratings that are more representative of everyday driving. Kia Canada is one of the first automotive manufacturers to implement the new testing practice and would like to ensure you fully understand the difference. The new procedure incorporates 3 additional test cycles that account for air conditioner usage, cold temperature operation, and higher speeds with more rapid acceleration and braking. To learn more, please visit: <http://oee.nrcan.gc.ca/fcr-rcf/public/index-e.frm>

EXTERIOR COLOURS

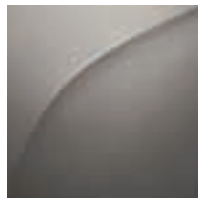
Sterling (M)
BC/BL



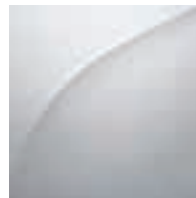
Black Cherry (P)
BC/BL



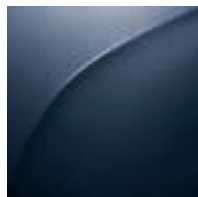
Mineral Silver (M)
BC/BL



Polar
BC/BL



Twilight Blue (M)
BC/BL



M = Metallic, P = Pearl
The exterior and interior colours in this brochure are as close to the actual vehicle production colours as the printing process allows.

ACCESSORIES

Chrome Running
Boards



All-weather
Floor Mats



Sport Visors



Kia Genuine Parts and Accessories are engineered by Kia and installed by professionals at your Kia dealer. For more information on the full line of available Genuine Kia Parts and Accessories, see your local Kia dealer, visit www.kia.ca or call 1-877-542-2886.

INTERIOR COLOURS

Black Cloth (BC)



Black Leather (BL)



WHEELS

16" alloy wheel



17" machined-finish
alloy wheels



18" machined-finish
alloy wheels



18" machined-finish
sport alloy wheels



Get the points.

Kia Member Rewards is an exclusive rewards program for Kia customers.

As a Kia Rewards Member, you'll earn points with every dollar you spend on maintenance service, parts and accessories at your servicing Kia dealer. Those Reward Points can be redeemed for discounts on future purchases – including the purchase of a new Kia. Plus earn Bonus Points on select items and services to collect rewards even faster.

Kia Member Rewards No-Charge Benefits include:

- Fuel fill-up with the delivery of your new Kia vehicle

Become a Kia Premium Rewards Member:

Ask your Kia Dealer how you can enjoy even more benefits.

Enroll Today:

Becoming a Kia Rewards Member is easy. See your Kia Dealer today to join. Visit rewards.kia.ca for full terms and conditions.



- Local shuttle service
- Multi-point vehicle inspection with every service visit
- Windshield washer fill-up with every paid service
- Windshield wiper installation with wiper purchase
- Preferential rates on car rentals, nationwide
- 24/7 Roadside Assistance for your vehicle under Kia's 5-year/100,000 km warranty or Certified Pre-Owned warranty
- Email notification of exclusive Kia specials and events – a great way to earn Reward Points and save on future purchases



We've got you covered.

At Kia, we believe peace of mind should come standard with every vehicle we make. That's why we back every model with one of the best warranties in the industry.

Our outstanding warranty coverage includes:

5-year/100,000 km – Worry-free comprehensive warranty covering virtually the entire vehicle⁸

5-year/100,000 km – Powertrain warranty covering the engine, transmission, axles, differentials and driveshafts⁸

5-year/100,000 km – Roadside assistance covers you in case of mechanical breakdown anywhere in North America⁸

5-year/unlimited km – Anti-perforation warranty on body sheet metal defects in material/workmanship⁸

For more information visit kia.ca or call 1-877-542-2886

1. When equipped with the navigation system, French voice commands may be limited. 2. Vehicle Stability Management, rear parking sonars and rearview camera are not substitutes for proper and safe driving procedures. 3. iPod® is a registered trademark of Apple Inc. 4. Microsoft® is a registered trademark of Microsoft Corporation in Canada and/or other countries. Failure to pay attention to travel conditions and vehicle operation while the vehicle is in motion could result in loss of vehicle control. Operate the UVO system, even with voice commands, only when it is safe to do so. 5. The Bluetooth® word mark and logos are registered trademarks owned by Bluetooth SIG, Inc. A compatible Bluetooth wireless technology-enabled cell phone is required to use Bluetooth hands-free wireless technology. 6. Infinity® is a registered trademark of Harman International Industries, Incorporated. 7. Service available in the 10 provinces and three territories of Canada, and the 48 contiguous states of the U.S. Monthly subscription sold separately after three trial months. 8. The Kia 5-year/100,000-km warranty includes various warranties and roadside assistance. Some restrictions apply. For more information call us at 1-877-542-2886 or visit to kia.ca. 9. Not available when Sportage is equipped with navigation. 10. Kia Sportage received the lowest number of problems per 100 vehicles among small SUVs in a tie in the proprietary J. D. Power 2014 U.S. Initial Quality StudySM. Kia Cadenza received the lowest number of problems per 100 vehicles among large cars in the proprietary J. D. Power 2014 U.S. Initial Quality StudySM. The 2014 study is based on responses from 86,118 new-vehicle owners, measuring 239 models and opinions after 90 days of ownership. Proprietary study results are based on experiences and perceptions of owners surveyed in February-May 2014. Your experiences may vary. Visit jdpower.com

 facebook.com/kiacanada

 twitter.com/kiacanada

 youtube.com/kiacanada

kia.ca



The Power to Surprise

SPORTAGE

All information contained herein was accurate and correct at the time of printing. Kia Canada Inc. reserves the right to make changes at any time without notice, and without any obligations as to colours, materials, specifications, features, accessories, packages, models and any applicable programs. Some vehicles shown may include optional equipment or may not be exactly as shown. Kia Canada Inc., by the publication and dissemination of this material, does not create any warranties, either expressed or implied, to any Kia products. See your Kia dealer or website for further details. Reproduction of the contents of this material without the expressed written approval of Kia Canada Inc. is prohibited. © Copyright 2015 Kia Canada Inc. Printed in Canada, June 2015.

Part# 99999 03SLE16