



Innovation
that excites

2016
ALTIMA[®]

NISSAN ALTIMA[®]

Isn't it time you were passionate about the car you drive? Welcome to the 2016 Altima.[®]

And follow Nissan Canada on:



Innovation
that excites

visit nissan.ca

Facebook[®] is a registered trademark of Facebook, Inc. Twitter[®] is a registered trademark of Twitter, Inc. YouTube[®] is a registered trademark of Google Inc. Instagram[®] is a registered trademark of Instagram, Inc.

All vehicles equipped with LED headlights have late availability. See retailer for details. All illustrations, photographs and specifications in this brochure are based on the latest product information. See actual vehicle for complete accuracy. Nissan Canada Inc. reserves the right to make changes at any time, without notice, in prices, colours, materials, equipment, specifications and models, and to discontinue models or equipment. For information on additional options and accessories, contact your Nissan Dealership. Registered trademarks are property of their respective owners.

At nissan.ca, you'll find a way to "build your own Nissan," a dealer locator, and more information about key Nissan support services. The Nissan names, logos, product names, feature names, and slogans are trademarks owned by or licenced to Nissan Motor Co. Ltd. and/or its North American subsidiaries. **Always wear your seat belt, and please don't drink and drive.** Printed in July 2016. Catalogue number: 99999-ALT16EN-R. © 2016 Nissan Canada Inc. All rights reserved.

ACCELERATE your pulse with a completely new look. Turn heads with sleek, flowing lines. Take on the road with exceptional efficiency, and gain confidence through innovative safety technologies. Inside, you'll find all the comforts you could ever want, but more important, the one thing you really need. A true sense of connection to what's possible. The new 2016 Nissan Altima®. It's time your ride kept up with **YOUR EXPECTATIONS.**





NEVER GET IN A HOT OR COLD CAR AGAIN.

No matter what the temperature, Altima®'s available Remote Engine Start System¹ with Intelligent Climate Control² helps make sure you always get into a comfortable car. On hot days, it can adjust temperature and airflow for a quick cool down. On cold days, it can adjust airflow to warm up the cabin, defrost windows and windshield, and can even turn on the available heated steering wheel and outside mirrors.



HAVE A SEAT INSPIRED BY THE COSMOS.

Zero Gravity Seats – In the weightlessness of space, humans take a relaxed posture that minimizes stress on the body. To recreate this “neutral posture” when you’re behind the wheel, Nissan designed an articulated front seat that offers continuous support from the pelvis to the chest, along with seat cushions that flex in response to your unique pressure points. The result is a seat that’s amazingly comfortable and helps reduce fatigue, no spacesuit required.

Nissan Altima® 3.5 SL TECH shown in Beige Leather.

¹Provincial laws may apply; review local laws before using. ²Intelligent Climate Control is only available on SV and SL models.



Leather-wrapped steering wheel

Paddle shifters with manual shift mode

Unique sport cloth seats

8-way power driver's seat

SR exterior styling

INTRODUCING THE ALTIMA SR®
RECONNECT WITH YOUR LOVE OF DRIVING.

Altima® SR puts you in the middle of the excitement with a cockpit designed for action. At your fingertips, steering-wheel mounted paddle shifters let you fire off shifts. A leather-wrapped steering wheel and shift knob feel great to the touch, while Zero Gravity Seats in unique sport cloth help hold you in place. Top it off with unique interior sport accents and the Advanced Drive-Assist® Display^{1,2} — which serves up info right in front of you, helping to minimize time looking away — and if you love to drive, this is where you want to be.

¹Driving is serious business and requires your full attention. If you have to use the feature while driving, exercise extreme caution at all times so full attention may be given to vehicle operation. ²Information displayed is dependent on how vehicle is equipped.

NissanConnectSM

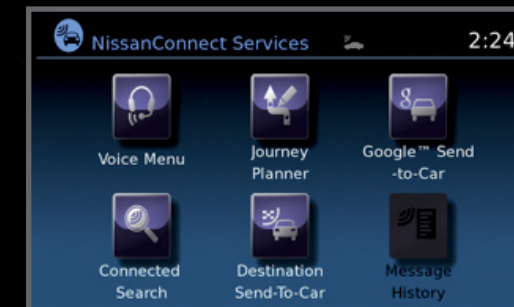
YOUR WORLD, AT YOUR FINGERTIPS.

With NissanConnectSM with Mobile Apps, your Altima[®] becomes your smartphone's best friend. Which means no more separation anxiety for you. Because now, your own hand-picked music, latest tweets, TripAdvisor[®] tips, Facebook[®] events, and more all come along for the ride, working seamlessly together through your smartphone and Altima[®]'s available 178 mm (7.0") colour touch-screen!



Your Nissan Altima[®] also keeps you in the loop with the available Nissan Navigation System (featuring voice recognition),² hands-free text messaging,³ Bluetooth[®] hands-free calling and streaming audio,⁴ plus an iPod[®]/USB input.⁵

¹Driving is serious business. Only use NissanConnectSM Services powered by SiriusXM[®] and NissanConnectSM Mobile Apps when safe to do so. NissanConnectSM Services and Mobile Apps availability is dependent on vehicle model, trim level, packaging, and/or options. See Nissan.ca/NissanConnect for complete availability details. Late availability for some features. Compatible smartphone required to operate NissanConnectSM Mobile Apps. NissanConnectSM Services, including automatic crash notification and SOS, are dependent upon the telematics device being in operative condition, its ability to connect to a wireless network, compatible wireless network availability, navigation map data, and GPS satellite signal receptions, the absence of which can limit or prevent the ability to reach NissanConnectSM Customer Care or receive support. Never program while driving. GPS mapping may not be detailed in all areas or reflect current road status. You are responsible for using Remote Engine Start and Remote Horn features in accordance with any laws, rules or ordinances in effect in your vehicle's location. Cellular network not available in all areas and/or at all times. Cellular technology is evolving, and changes to cellular networks provided by independent companies are not within Nissan's or SXM CVS Canada's control. Neither Nissan nor SXM CVS Canada are responsible for associated costs that may be required for continued operation due to cellular network termination (including equipment upgrades, if available, or roaming charges on alternative networks). Should cellular provider terminate/restrict service, service may be terminated without notice and with no liability to Nissan, SXM CVS Canada and/or their respective agents or affiliates. Certain services require a PIN for activation. Enrollment and Subscription Agreement is required to receive full suite of NissanConnectSM Services powered by SiriusXM[®] six (6) month trial period. Trial periods begin on your date of vehicle purchase or lease of a new Nissan; subsequently the respective paid subscription is at the then current rate to continue to receive respective services. Text rates and/or data usage may apply. See Nissan.ca/NissanConnect for details. ²Never program while driving. GPS mapping may not be detailed in all areas or reflect current road status. ³Use the text messaging feature after stopping your vehicle in a safe location. If you have to use the feature while driving, exercise extreme caution at all times so full attention may be given to vehicle operation. Compatible smartphone required. Standard text rates and/or data usage may apply. ⁴Availability of specific features is dependent upon the phone's Bluetooth[®] support. Please refer to your phone Owner's Manual for details. Bluetooth[®] word mark and logos are owned by Bluetooth SIG, Inc., and any use of such marks by Nissan is under licence. ⁵Driving is serious business and requires your full attention. If you have to use the connected device while driving, exercise extreme caution at all times so full attention may be given to vehicle operation. iPod[®] is a registered trademark of Apple, Inc. All rights reserved. iPod[®] or other external device not included. ⁶Provincial laws may apply; review local laws before using. The App Store[®] logo is a registered trademark of Apple, Inc. All rights reserved. Facebook[®] is a registered trademark of Facebook, Inc. Google[®] and the Google[®] Play logo are registered trademarks of Google Inc. The Sirius, XM, and SiriusXM names and all related marks and logos are trademarks of Sirius XM Radio Inc. TripAdvisor[®] is a registered trademark of TripAdvisor LLC. Twitter[®] is a registered trademark of Twitter, Inc.



MEET YOUR ENTOURAGE.

NissanConnectSM Services powered by SiriusXM[®]. Let our people look after you and your people. With available NissanConnectSM Services, you have a selection of plans that give you additional peace of mind, along with added convenience and comfort.¹



EMERGENCY PREPAREDNESS

Watches out for you with features, including automatic collision notification and emergency calling.



REMOTE ACCESS

Use your computer or smartphone to warm up your car with the Remote Engine Start System. Remote lock/unlock gives you easy access – even without a key.⁶



CUSTOMIZABLE ALERTS

Keeps you in the know about your vehicle's location, including Valet Boundary, speed, and even curfew alerts.



CONCIERGE SERVICES

Traveling? You've got help with features, including Journey Planner and Destination Download.

4 CYLINDER

4-cylinder Engine. Choose the 182 HP 4-cylinder engine and get more than just spirited performance. The advanced intake system optimizes the opening of intake valves at high rpm to keep the torque curve flat, giving you smooth power while contributing to the impressive highway fuel economy. In the newest version of our **Xtronic CVT® (Continuously Variable Transmission)**, shift points have been programmed, offering a traditional transmission feel, while providing anything but traditional efficiency.

TWO ENGINES TO CHOOSE FROM

6.0
L/100 KM (47 MPG) HWY¹

182
HORSEPOWER

180
LB.-FT. TORQUE

7.4
L/100 KM (38 MPG) HWY¹

270
HORSEPOWER

251
LB.-FT. TORQUE

V6

V6 Engine. Nissan's legendary 3.5-litre, 270 HP V6 engine treats you to sports-car-like performance and a cool 7.4 L/100 KM (38 MPG) HWY¹ that keeps you right at home in the carpool lane. Part of the engineering magic is Continuously Variable Valve Timing Control System (CVTCS), which means power is always on tap – off the line, or passing – for a ride as thrilling as it is efficient.





SEE THE LIGHT.

Altima®'s available LED headlights¹ with signature LEDs make an unforgettable impression – day or night.

Nissan Altima® 3.5 SL TECH shown in Cayenne Red and Pearl White.

CORNER WITH PURPOSE. AND JOY.

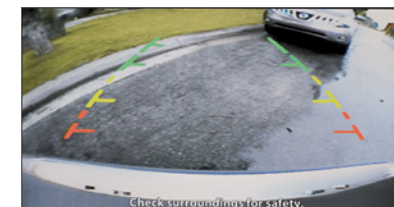
What if your car knew when you were cornering – and how to respond to your commands? That's the kind of intuitive response we've engineered into every Altima.® It starts with Active Understeer Control, which reads the cornering situation and, if needed, will imperceptibly brake the appropriate wheel to help you steer through the turn. From there, the rear, multi-link suspension provides exceptional agility by allowing the rear wheels to turn slightly to match the front, while the shocks significantly reduce vibrations for a smooth, flat ride. All this, so you can enter a corner with more confidence, and exit with a big grin.



NISSAN SAFETY SHIELD TECHNOLOGIES™

GET AWAY WITH JUST A WARNING.

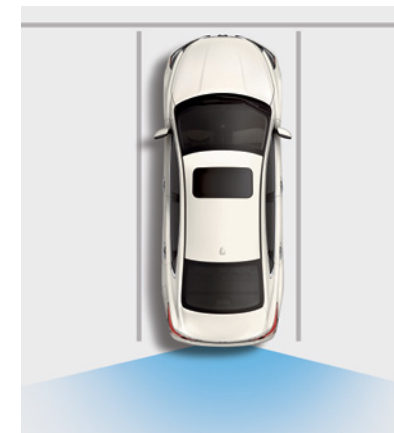
What if your car had your back? Whether you're changing lanes on the highway or deftly manoeuvring your way into a parking spot, Altima®'s available Safety Shield Technologies™ take advantage of the rearview camera and act as a second set of eyes, giving you a whole new way to double check.



Blind Spot Warning. If another vehicle is detected in the blind spot area, an indicator appears in the driver's or front passenger's door pillar and on the Advanced Drive-Assist® Display. Then, if you put your turn signal on, the indicator flashes with a warning chime.²



Rear Cross Traffic Alert. When you're backing out of a parking space, this feature watches the area around the rear of your Altima,® and can warn you about vehicles you might not see behind you approaching from either side. So backing up feels easier than ever.³



RearView Monitor. When you're in Reverse, the RearView Monitor shows what's directly behind you and helps make backing up and parking easier. Guide lines move with the steering wheel to help you place your vehicle accurately.⁴

¹Late availability. ²Blind Spot Warning is not a substitute for proper lane change procedures. The system will not prevent contact with other vehicles or accidents. It may not detect every vehicle or object around you. ³Not a substitute for proper backing procedures. May not detect all moving vehicles. Speed and other limitations apply. See Owner's Manual for details. ⁴Parking aid/convenience feature. Cannot completely eliminate blind spots. May not detect every object and does not warn of moving objects. Always check surroundings and turn to look behind you before moving vehicle.

NISSAN SAFETY SHIELD TECHNOLOGIES™

WE LOOK FORWARD TO HAVING YOUR BACK.

What if extra reassurance was easy to spot? Altima®'s available Safety Shield Technologies™ offer you a suite of advanced systems that keep an eye on the flow of traffic and can even help you avoid a collision.

Predictive Forward Collision Warning (PFCW)

In traffic, it only takes a moment to get caught off guard in a potentially dangerous situation. How about a little help? With this technology, a radar sensor on the front of Altima® constantly monitors not just one vehicle ahead in your lane, but two. When the system detects sudden deceleration, it gives you an audible warning and a visual signal on the instrument panel. So you get a heads up, even if you can't see what's slowing you down.^{1,2}

Forward Emergency Braking (FEB)

Using radar technology to keep an eye on your speed and proximity to the vehicle ahead of you, Forward Emergency Braking gives you audible and visual display warnings to help you reduce your speed, if necessary. It can also apply braking if you fail to respond, to help you avoid a collision. If a collision is unavoidable, this feature will engage the brakes to help reduce speed of impact and reduce the severity of a collision.^{1,3}

Intelligent Cruise Control (ICC)

This advanced system automatically adjusts vehicle speed to help maintain the distance between you and the car ahead of you, and can even slow the vehicle to a complete stop if necessary. A welcome capability during stop and go traffic.^{1,4}



Nissan Altima® 3.5 SL TECH shown in Gun Metallic.

¹Available feature. ²PFCW is intended to warn you before a collision occurs; it cannot prevent a collision. Speed and other limitations apply. See Owner's Manual for details. ³FEB cannot prevent accidents due to carelessness or dangerous driving techniques. It may not provide warning or braking in certain conditions. Speed limitations apply. ⁴Intelligent Cruise Control is not a collision avoidance system or warning device. Designed to use limited braking. Failure to apply the brakes could result in an accident.

NISSAN SAFETY SHIELD® PHILOSOPHY

INNOVATION THAT LOOKS OUT FOR YOU.

What if you had the confidence you need for every part of your drive? The Nissan Safety Shield® is a comprehensive approach to safety that guides the engineering and development of every vehicle we make.

MONITOR

Smart technologies are designed to help monitor conditions. Like a warning when sudden braking is detected two vehicles ahead or a system that helps ensure you're travelling on properly inflated tires.

Available Features:

Predictive Forward Collision Warning (PFCW)¹

Forward Emergency Braking (FEB)²

Blind Spot Warning (BSW)³

Rear Cross Traffic Alert (RCTA)⁴

Intelligent Cruise Control (ICC)⁵



Tire Pressure Monitoring System (TPMS) with class-exclusive Easy-Fill Tire Alert TPMS lets you know when a tire is low. And Easy-Fill Tire Alert takes the guesswork out of filling your tires, with a beep of the horn when you've reached the correct pressure.^{6,7,8}

RESPOND

Whether you need to hit the brakes hard or manoeuvre around an unexpected obstacle, these standard technologies help you respond to a potentially harmful situation.

Vehicle Dynamic Control helps you maintain your steered path.⁹

Traction Control System helps reduce wheelspin in low-traction situations.

Anti-lock Braking System helps you maintain steering control around obstacles while braking heavily.

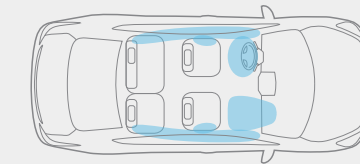
Electronic Brake force Distribution sends extra force to the rear brakes when you have additional weight of passengers or cargo in the back.

Brake Assist helps apply maximum braking force if it detects hard braking and senses you are in an emergency situation.¹⁰



PROTECT

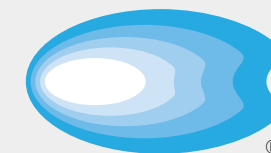
When a collision is unavoidable, Nissan's Zone Body construction helps absorb the impact while the advanced seat belt and airbag systems help protect passengers.¹¹



Six Standard Airbags Nissan Advanced Airbag System has dual-stage supplemental front airbags with seat belt and occupant-classification sensors.¹¹ In addition, Altima® features front seat-mounted side-impact supplemental airbags,¹¹ and roof-mounted curtain side-impact supplemental airbags.¹¹

LATCH System (Lower Anchors and Tethers for Children)

snug+kids® Nissan safety engineers have dedicated thousands of hours to evaluating hundreds of child restraints in Nissan vehicles. The result: an industry first, The Snug Kids® Child Safety Seat Fit Guide. This guide lists child seats that fit the rear seats of Nissan vehicles, as well as offers invaluable tips on correct installation. Look for the latest Fit Guide at [Nissan.ca/en/owners](https://www.nissan.ca/en/owners)



SAFETY SHIELD

¹PFCW is intended to warn you before a collision occurs; it cannot prevent a collision. Speed and other limitations apply. See Owner's Manual for details. ²FEB cannot prevent accidents due to carelessness or dangerous driving techniques. It may not provide warning or braking in certain conditions. Speed limitations apply. ³Blind Spot Warning is not a substitute for proper lane change procedures. The system will not prevent contact with other vehicles or accidents. It may not detect every vehicle or object around you. ⁴Not a substitute for proper backing procedures. May not detect all moving vehicles. Speed and other limitations apply. See Owner's Manual for details. ⁵Intelligent Cruise Control is not a collision avoidance system or warning device. Designed to use limited braking. Failure to apply the brakes could result in an accident. ⁶TPMS is not a substitute for regular tire pressure checks. ⁷Based on Global Automakers of Canada (GAC) segmentation. ⁸Vehicle must be on for the Easy-Fill Tire Alert to operate. ⁹VDC, which should remain on when driving except when freeing the vehicle from mud or snow, cannot prevent accidents due to abrupt steering, carelessness, or dangerous driving techniques. ¹⁰Brake Assist is only an aid to assist the driver and is not a collision warning or avoidance device. It is the driver's responsibility to be in control of the vehicle at all times. ¹¹Airbags are only a supplemental restraint system; always wear your seat belt. Even with the occupant-classification sensor, rear-facing child restraints should not be placed in the front-passenger's seat. Also, in addition to any other requirement of applicable law, all children 12 and under should ride in the rear seat properly secured in child restraints, booster seats, or seat belts according to their size. Airbags will only inflate in certain accidents; see your Owner's Manual for more details. Inflated airbags shown for illustration purposes only; actual coverage area may differ. Airbags deflate after deployment.

CHOOSE YOUR TRIM LEVEL

2.5

- 2.5-litre DOHC 16-valve 4-cylinder engine
- Xtronic CVT® (Continuously Variable Transmission)
- Engine block heater
- Fog lights
- Dual chrome exhaust finishers
- Remote keyless entry with Push Button Ignition
- Advanced Drive-Assist® Display
- Bluetooth® Hands Free Phone System¹
- Streaming audio via Bluetooth® wireless technology¹
- Tire Pressure Monitoring System (TPMS) with Easy-Fill Tire Alert
- AM/FM/CD audio system with four speakers
- Illuminated steering wheel-mounted audio controls
- Cruise control
- Tilt and telescoping steering column
- Air conditioning
- 60/40 split fold-down rear seatbacks
- Front-passenger seatback pocket
- Six airbags
- Active Understeer Control
- Vehicle Dynamic Control (VDC)
- Traction Control System (TCS)



2.5 SV

INCLUDES 2.5 S EQUIPMENT PLUS:

- 17" x 7.5" aluminum-alloy wheels
- SiriusXM® Satellite Radio²
- Heated front seats
- Dual Zone Automatic Temperature Control (ATC)
- Rear passenger air conditioning vents
- Driver's seatback pocket
- Side cargo net
- Leather-wrapped steering wheel and shift knob
- Blind Spot Warning (BSW)
- Rear Cross Traffic Alert (RCTA)

KEY AVAILABLE PACKAGE: Moonroof and Navigation Package



2.5 S

INCLUDES 2.5 EQUIPMENT PLUS:

- Nissan Intelligent Key®
- Remote Engine Start System with Intelligent Climate Control
- Heated outside mirrors
- 8-way power adjustable driver's seat
- 2-way power driver's lumbar support
- Tire Pressure Monitoring System (TPMS) with individual tire pressure display and Easy-Fill Tire Alert
- Driver's seatback pocket
- Upgraded audio system with 127 mm (5.0") colour display and speed-sensitive volume control
- RearView Monitor
- USB connection port for iPod® interface
- NissanConnectSM with Mobile Apps
- Siri® Eyes Free voice recognition
- Hands-free text messaging assistant
- Air conditioning with in-cabin microfilter
- Auto Headlights
- Sun visors with illuminated vanity mirrors and extensions



2.5 SL TECH

INCLUDES 2.5 SV EQUIPMENT PLUS:

- Leather-appointed seats
- Adjustable rear head restraints
- Bose® Premium Audio System with nine speakers
- Nissan Navigation System with 178 mm (7.0") colour touch-screen display and voice recognition
- SiriusXM® Traffic²
- NissanConnectSM Services powered by SiriusXM®
- Premium interior finishers
- Heated steering wheel
- Passenger side front window one touch auto-up/down with auto-reverse
- 4-way power adjustable passenger's seat
- LED headlights with signature LEDs (late availability)
- Manual folding outside mirrors with LED turn signal indicators
- Power sliding glass moonroof
- HomeLink® universal garage-door opener
- Auto-dimming inside rearview mirror
- Digital compass
- Mood lighting
- Intelligent Cruise Control (ICC)
- Predictive Forward Collision Warning (PFCW)
- Forward Emergency Braking (FEB)



2.5 SR

INCLUDES 2.5 S EQUIPMENT PLUS:

- 18" x 7.5" aluminum-alloy sport wheels
- Paddle shifters and manual shift mode
- Leather-wrapped steering wheel
- Leather-wrapped shift knob
- Unique sport interior accents
- Heated front seats
- Sport-tuned suspension – retuned dampers, stiffer springs and larger front stabilizer bar
- Sport spoiler
- LED headlights with signature LEDs (late availability)
- Smoked headlight housing



3.5 SL TECH

INCLUDES 2.5 SL TECH EQUIPMENT PLUS:

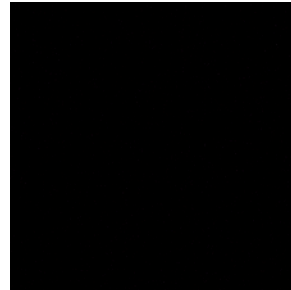
- 3.5-litre DOHC 24-valve V6 engine
- 18" Aluminum-alloy wheels
- Paddle shifters and manual shift mode



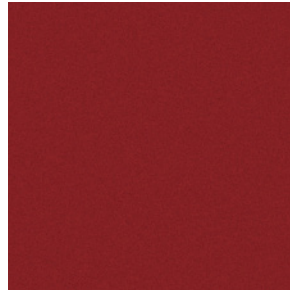
¹Availability of specific features is dependent upon the phone's Bluetooth® support. Please refer to your phone Owner's Manual for details. Bluetooth® word mark and logos are owned by Bluetooth SIG, Inc., and any use of such marks by Nissan is under licence. ²XM® and SiriusXM® Satellite Radio is available in the 10 Canadian provinces and the 48 contiguous United States. Basic monthly subscription required and sold separately after trial period. NavTraffic®/SiriusXM® Traffic is available in select North American markets. In Canada, at time of printing, incident and flow data is available for 12 metropolitan areas of Canada (Vancouver, Calgary, Edmonton, Toronto, Ottawa, Montreal, Quebec City, Hamilton, St. Catharines, Kitchener, Guelph, and London). Subscription sold separately after trial period. All subscriptions subject to customer agreement

at siriusxm.ca/terms. Fees and programming subject to change. © 2015 Sirius XM Canada Inc. The Sirius®, XM®, and SiriusXM® names and all related marks and logos are trademarks of Sirius XM Radio Inc. All other trademarks are the property of their respective owners. Bose® is a registered trademark of The Bose Corporation. Facebook® is a registered trademark of Facebook, Inc. Google® is a registered trademark of Google Inc. HomeLink® is a registered trademark of Gentex Corporation. iPod® is a registered trademark of Apple, Inc. All rights reserved. iPod or other external device not included. Siri® is a registered trademark of Apple, Inc.

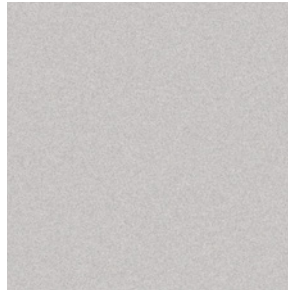
PAINT AND FABRIC



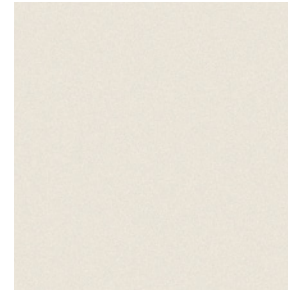
Super Black KH3



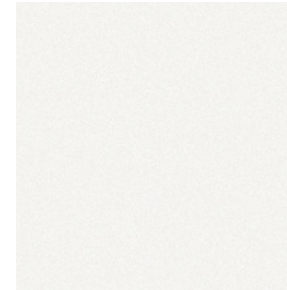
Cayenne Red¹ NAH



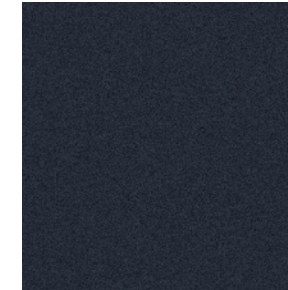
Brilliant Silver¹ K23



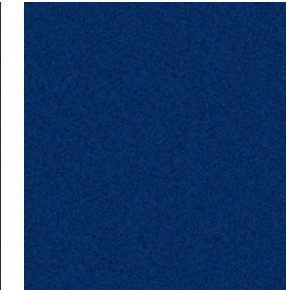
Pearl White¹ QAB



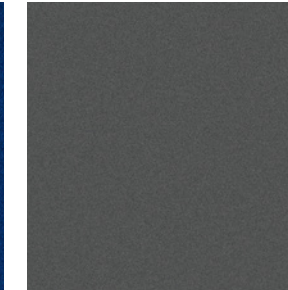
Glacier White QAK



Storm Blue¹ RBD



Deep Blue Pearl¹ RAY



Gun Metallic¹ KAD

■ Standard

¹Extra cost option

Nissan has taken care to ensure that the colour swatches presented here are the closest possible representations of actual vehicle colours. Swatches may vary slightly due to the printing process and whether viewed in daylight, fluorescent or incandescent light. Please see the actual colours at your local Nissan dealer.

	2.5/ 2.5 S	2.5 SR	2.5 SV	2.5 SL TECH	3.5 SL TECH
CHARCOAL CLOTH	■		■		
CHARCOAL SPORT CLOTH		■			
CHARCOAL LEATHER				■	■
BEIGE LEATHER					

	2.5/ 2.5 S	2.5 SR	2.5 SV	2.5 SL TECH	3.5 SL TECH
CHARCOAL CLOTH				■	
CHARCOAL SPORT CLOTH	■				
CHARCOAL LEATHER				■	■
BEIGE LEATHER					

	2.5/ 2.5 S	2.5 SR	2.5 SV	2.5 SL TECH	3.5 SL TECH
CHARCOAL CLOTH	■			■	
CHARCOAL SPORT CLOTH		■			
CHARCOAL LEATHER				■	■
BEIGE LEATHER					

	2.5/ 2.5 S	2.5 SR	2.5 SV	2.5 SL TECH	3.5 SL TECH
CHARCOAL CLOTH	- / ■				
CHARCOAL SPORT CLOTH		■			
CHARCOAL LEATHER				■	■
BEIGE LEATHER					

	2.5/ 2.5 S	2.5 SR	2.5 SV	2.5 SL TECH	3.5 SL TECH
CHARCOAL CLOTH	■ / -				
CHARCOAL SPORT CLOTH					
CHARCOAL LEATHER					
BEIGE LEATHER					

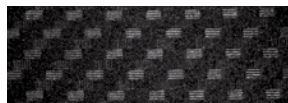
	2.5/ 2.5 S	2.5 SR	2.5 SV	2.5 SL TECH	3.5 SL TECH
CHARCOAL CLOTH				■	
CHARCOAL SPORT CLOTH					
CHARCOAL LEATHER				■	■
BEIGE LEATHER					

	2.5/ 2.5 S	2.5 SR	2.5 SV	2.5 SL TECH	3.5 SL TECH
CHARCOAL CLOTH					
CHARCOAL SPORT CLOTH					
CHARCOAL LEATHER					
BEIGE LEATHER					

	2.5/ 2.5 S	2.5 SR	2.5 SV	2.5 SL TECH	3.5 SL TECH
CHARCOAL CLOTH	■				
CHARCOAL SPORT CLOTH					
CHARCOAL LEATHER				■	■
BEIGE LEATHER					



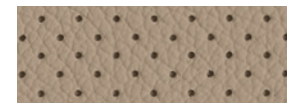
CHARCOAL CLOTH



CHARCOAL SPORT CLOTH



CHARCOAL LEATHER



BEIGE LEATHER

GENUINE NISSAN ACCESSORIES

Every Genuine Nissan Accessory is: custom-fit, custom-designed and durability-tested; available for finance and backed by Nissan's 3 year/60,000 km Accessories limited warranty when installed by dealer at time of your vehicle purchase.²

A. Rear Decklid Spoiler

May the downforce be with you.

B. Chrome Rear Bumper Protector

Protect what you love in style.

C. External Ground Lighting

A brilliant way to make your mark.

D. Trunk Sub-Floor Organizer³

Bring order to your trunk.

Additional Accessories:

- All-season Rubber Floor Mats
- Clear Rear Bumper Protector
- Hideaway Trunk Net³
- Illuminated Kick Plates
- Interior Accent Lighting
- Remote Engine Start System⁴
- Rubber Trunk Protector
- And More



See your Nissan dealer for details, or go to accessories.nissan.ca

BUYING AND OWNING

Finance Options Through Nissan Canada Finance, we offer many attractive lease and loan options that can be tailored to your individual needs. We have unique programs such as the Nissan Grad Program, Loyalty Program or the Nissan Advantage Program. Please visit our website Nissan.ca/finance to explore all of the options available. We have also made it easy to pre-qualify online. All of our programs come with competitive rates and terms. With our flexible options, driving home a new Nissan has never been easier. Consult your local Nissan Dealership for complete details.

No-Nonsense Warranty Every 2016 Nissan is covered by a 3 year/60,000 km⁵ Comprehensive New Vehicle Warranty, a 5 year/100,000 km⁵ Powertrain Warranty, an 8 year/130,000 km⁵ Emission Control Warranty on selected components, and a 5 year/unlimited km Corrosion Perforation Warranty. As a Nissan owner, you'll also receive a 3 year Roadside Assistance program available to you 24 hours a day. Terms, conditions and exclusions apply. See Warranty Information Booklet for complete details.

Added Security Plan (ASP) For ultimate peace of mind, consider the Nissan Added Security Plan. It's our commitment to be there for you, and to help you leave your worries behind. Different plans, available for both purchased and leased vehicles, let you tailor the coverage to your driving habits.

Security+Plus™ Prepaid Maintenance Plan The smart choice when it comes to maintaining your new Nissan. Honoured at all participating Nissan Dealers in Canada and the U.S., your vehicle is cared for by factory-trained technicians using Genuine Nissan Parts. And best of all, there's no worrying about price increases on parts or service in the future. A variety of plans are available. Ask your Dealer for details.



²See your Nissan Dealership and read the actual limited warranty. ³Cargo and load capacity limited by weight and distribution. Always secure all cargo. ⁴Provincial laws may apply; review local laws before using. ⁵Whichever occurs first.

SPECIFICATIONS

Engines	2.5	2.5 S	2.5 SR	2.5 SV	2.5 SL TECH	3.5 SL TECH
QR25DE – 2.5-litre DOHC 16-valve 4-cylinder	■	■			■	
Horsepower – 182 HP @ 6000 rpm						
Torque – 180 lb-ft @ 4000 rpm						
VQ35DE – 3.5-litre DOHC 24-valve V6						■
Horsepower – 270 HP @ 6400 rpm						
Torque – 251 lb-ft @ 4400 rpm						
Continuously Variable Valve Timing Control System (CVTCS)	■	■	■	■	■	■
Variable induction system	■	■	■	■	■	■
Nissan Direct Ignition System	■	■	■	■	■	■
Electronic drive-by-wire throttle	■	■	■	■	■	■
Engine block heater	■	■	■	■	■	■

Drivetrain

Front engine/Front-Wheel Drive	■	■	■	■	■	■
Xtronic CVT® (Continuously Variable Transmission)	■	■	■	■	■	■
Paddle shifters and manual shift mode			■	■	■	■

Brakes

11.7" Front vented disc/11.5" rear disc brakes	■	■	■	■	■	■
4-wheel Anti-lock Braking System (ABS) with Electronic Brake force Distribution (EBD)	■	■	■	■	■	■

Suspension/Steering

Independent strut front suspension	■	■	■	■	■	■
Multi-link independent rear suspension	■	■	■	■	■	■
Front and rear stabilizer bars	■	■	■	■	■	■
Active Understeer Control	■	■	■	■	■	■
Sport-tuned suspension – retuned dampers, stiffer springs and larger rear stabilizer bar			■	■	■	■
Electronic hydraulic power-assisted steering	■	■	■	■	■	■

Wheels/Tires

16" x 7.0" steel wheels with wheel covers	■	■				
17" x 7.5" aluminum-alloy wheels			■	■	■	■
18" x 7.5" aluminum-alloy wheels			■	■	■	■
P215/60TR16 all-season tires	■	■				
P215/55VR17 all-season tires			■	■	■	■
P235/45VR18 all-season tires			■	■	■	■

Exterior Features

Auto-on/off headlights		■	■	■	■	■
Projector-type halogen headlights	■	■	■	■	■	■
LED headlights with Signature LEDs (late availability)			■	■	■	■
Fog lights	■	■	■	■	■	■
Sport spoiler			■	■	■	■
Dual chrome exhaust finishers	■	■	■	■	■	■
Dual body-colour power outside mirrors	■	■	■	■	■	■
Manual folding outside mirrors with LED turn signal indicators			■	■	■	■
Heated outside mirrors	■	■	■	■	■	■
Power sliding glass moonroof with one-touch open/close and tilt feature					■	■
Active grille shutters	■	■	■	■	■	■
UV-reducing solar glass	■	■	■	■	■	■

Comfort/Convenience

Advanced Drive-Assist™ Display	■	■	■	■	■	■
Nissan Navigation System with 178 mm (7.0") colour touch-screen display and voice recognition				■	■	■

Comfort/Convenience (continued)	2.5	2.5 S	2.5 SR	2.5 SV	2.5 SL TECH	3.5 SL TECH
SiriusXM® Traffic ¹				■	■	■
NissanConnectSM Services Powered by SiriusXM®				■	■	■
NissanConnectSM with Mobile Apps		■	■	■	■	■
Siri® Eyes Free voice recognition		■	■	■	■	■
RearView Monitor		■	■	■	■	■
Hands-free text messaging assistant		■	■	■	■	■
Bluetooth® Hands Free Phone System ²	■	■	■	■	■	■
HomeLink® universal garage-door opener		■	■	■	■	■
Air conditioning	■	■	■	■	■	■
Dual-zone Automatic Temperature Control (ATC)		■	■	■	■	■
In-cabin microfilter		■	■	■	■	■
Rear passenger air conditioning vents		■	■	■	■	■
Power windows with one-touch driver-side auto-up/down with auto-reverse	■	■	■	■	■	■
Passenger-side front-window one-touch auto-up/down with auto-reverse		■	■	■	■	■
Power door locks with auto-locking feature	■	■	■	■	■	■
Remote keyless entry with trunk release	■	■	■	■	■	■
Push Button Ignition		■	■	■	■	■
Nissan Intelligent Key®		■	■	■	■	■
Remote Engine Start System with Intelligent Climate Control		■	■	■	■	■
Cruise control with steering wheel-mounted controls	■	■	■	■	■	■
Intelligent Cruise Control (ICC)		■	■	■	■	■
Fine Vision electroluminescent gauges	■	■	■	■	■	■
Tilt and telescoping steering column		■	■	■	■	■
Vehicle intermittent speed-sensitive flat-blade windshield wipers		■	■	■	■	■
Sun visors with vanity mirrors		■	■	■	■	■
Sun visors with illuminated vanity mirrors and extension		■	■	■	■	■
Auto-dimming inside rearview mirror		■	■	■	■	■
LED map lights and rear reading lights	■	■	■	■	■	■
Mood lighting		■	■	■	■	■
Overhead sunglasses holder	■	■	■	■	■	■
Lockable glove compartment		■	■	■	■	■
Four cup holders		■	■	■	■	■
Front/rear door map pockets with bottle holders		■	■	■	■	■
Driver's seatback pocket		■	■	■	■	■
Front-passenger seatback pocket		■	■	■	■	■
12-volt DC power outlet	■	■	■	■	■	■
Side cargo net		■	■	■	■	■

Seating/Appointments

6-way manual adjustable driver's seat		■	■	■	■	■
8-way power adjustable driver's seat		■	■	■	■	■
4-way power adjustable passenger's seat			■	■	■	■
2-way power driver lumbar support			■	■	■	■
Cloth seat trim		■	■	■	■	■
Leather-appointed seats					■	■
Adjustable rear head restraints					■	■
Heated front seats		■	■	■	■	■
Heated steering wheel			■	■	■	■
Leather-wrapped steering wheel			■	■	■	■
Leather-wrapped shift knob		■	■	■	■	■
Silver trim finisher		■	■	■	■	■
Premium trim finisher			■	■	■	■
60/40 Split fold-down rear seatbacks with centre armrest	■	■	■	■	■	■
Carpeted trunk lid trim		■	■	■	■	■

Audio/Entertainment	2.5	2.5 S	2.5 SR	2.5 SV	2.5 SL TECH	3.5 SL TECH
AM/FM/CD audio system	■	■	■	■	■	■
AM/FM/CD audio system with 127 mm (5.0") colour display		■	■	■	■	■
Bose® Premium Audio System with AM/FM/CD and 178 mm (7.0") colour display					■	■
Illuminated steering wheel-mounted audio controls		■	■	■	■	■
Four speakers		■	■	■	■	■
Six speakers		■	■	■	■	■
Nine speakers					■	■
Auxiliary audio input jack and Radio Data System (RDS)	■	■	■	■	■	■
Speed-sensitive volume control		■	■	■	■	■
USB connection port for iPod® interface and other compatible devices		■	■	■	■	■
MP3/WMA CD playback capability		■	■	■	■	■
SiriusXM® Satellite Radio ¹					■	■
Streaming audio via Bluetooth® wireless technology ²		■	■	■	■	■
Diversity antenna		■	■	■	■	■

Safety/Security

Nissan Advanced Airbag System with dual-stage supplemental front airbags with seat belt and occupant-classification sensors	■	■	■	■	■	■
Driver and front-passenger seat-mounted side-impact supplemental airbags		■	■	■	■	■
Roof-mounted curtain side-impact supplemental airbags for front and rear-seat outboard occupant head protection	■	■	■	■	■	■
Vehicle Dynamic Control (VDC) with Traction Control System (TCS)	■	■	■	■	■	■
Blind Spot Warning (BSW)				■	■	■
Rear Cross Traffic Alert (RCTA)				■	■	■
Predictive Forward Collision Warning (PFCW)				■	■	■
Forward Emergency Braking (FEB)				■	■	■
3-point ALR/ELR passenger seat belt system (ELR for driver)	■	■	■	■	■	■
Front seat belts with pretensioners and load limiters	■	■	■	■	■	■
LATCH System (Lower Anchors and Tethers for Children)	■	■	■	■	■	■
Zone Body construction with front and rear crumple zones	■	■	■	■	■	■
Hood-buckling creases, pipe-style steel side-door guard beams, and energy-absorbing steering column	■	■	■	■	■	■
Tire Pressure Monitoring System (TPMS) with Easy-Fill Tire Alert		■	■	■	■	■
Tire Pressure Monitoring System (TPMS) with individual tire pressure display and Easy-Fill Tire Alert			■	■	■	■
Immobilizer Key System	■	■	■	■	■	■
Anti-theft system	■	■	■	■	■	■

PACKAGES

■ Moonroof and Navigation Package (2.5 SV)

Power sliding glass moonroof with one-touch open/close and tilt feature • Nissan Navigation System with 178 mm (7.0") colour touch-screen display and voice recognition • SiriusXM® Traffic¹

This package relocates digital compass to Navigation display.

¹XM® and SiriusXM® Satellite Radio is available in the 10 Canadian provinces and the 48 contiguous United States. Basic monthly subscription required and sold separately after trial period. NavTraffic®/SiriusXM® Traffic is available in select North American markets. In Canada, at time of printing, incident and flow data is available for 12 metropolitan areas of Canada (Vancouver, Calgary, Edmonton, Toronto, Ottawa, Montreal, Quebec City, Hamilton, St. Catharines, Kitchener, Guelph, and London). Subscription sold separately after trial period. All subscriptions subject to customer agreement at siriusxm.ca/terms. Fees and programming subject to change. ©2015 Sirius XM Canada Inc. The Sirius®, XM®, and SiriusXM® names and all related marks and logos are trademarks of Sirius XM Radio Inc. All other trademarks are the property of their respective owners. ²Availability of specific features is dependent upon the phone's Bluetooth® support. Please refer to your phone Owner's Manual for details. Bluetooth® word mark and logos are owned by Bluetooth SIG, Inc., and any use of such marks by Nissan is under licence. Bose® is a registered trademark of The Bose Corporation. HomeLink® is a registered trademark of Gentex Corporation. iPod® is a registered trademark of Apple, Inc. All rights reserved. iPod or other external device not included. Siri® is a registered trademark of Apple, Inc.

DIMENSIONS/CAPACITIES/WEIGHTS/FUEL

Dimensions	
Exterior – mm (inches)	
Wheelbase	2775 (109.3)
Overall length	4874 (191.9)
Overall width	1830 (72.0)
Overall height	
16"/17" Wheels	1467 (57.8)
18" Wheels (2.5 SR)	1474 (58.0)
18" Wheels (3.5 SL TECH)	1473 (57.9)
Track width (front/rear)	
16"/17" Wheels	1585/1585 (62.4/62.4)
18" Wheels	1575/1575 (62.0/62.0)
Interior – mm (inches) (front/rear)	
Head room without moonroof	1016/942 (40.0/37.1)
With moonroof	992/942 (39.1/37.1)
Leg room	1143/917 (45.0/36.1)
Hip room	1371/1324 (54.0/52.1)
Shoulder room	1432/1432 (56.4/56.4)

Capacities

Seating capacity	5
Interior passenger volume – L (cu. ft.)	2885 (101.9)
Cargo volume – L (cu. ft.)	436 (15.4)
Fuel tank – L (Imp. gal.)	68.1 (18 gal)

Curb Weights – kg (lbs)

4-cylinder	2.5	2.5 S	2.5 SR	2.5 SV	2.5 SL
Base total	1453 (3203)	1461 (3221)	1476 (3254)	1472 (3245)	1477 (3256)
V6					3.5 SL
Base total					1576 (3474)

2016 Fuel Consumption Estimates – L/100 km (MPG)

City/Hwy	4-cylinder	4-cylinder SR	V6
City	8.7 (32)	8.9 (32)	10.3 (27)
Highway	6.0 (47)	6.3 (45)	7.4 (38)

— Actual mileage may vary with driving conditions. Use for comparison only.

■ Standard

■ Part of Moonroof and Navigation Package

Nissan's environmental action plan focuses on several key areas. In addition to increasing production of Zero Emission vehicles like the 100% electric LEAF,® we're improving fuel efficiency across our lineup, and reducing the environmental impact of manufacturing through energy-efficient practices in our plants.

