

2016

AVALON



TOYOTA

The perfect balance of beauty and performance.

The new 2016 Toyota Avalon isn't just an incredible sedan – it represents the best of Toyota in every way. It's what happens when passion and design come together with Toyota's legendary quality and reliability. You'll find this perfect sense of balance everywhere in the Avalon. It starts with a sharp and dynamic design that conveys a spirit of elegance, and the promise of performance. It continues inside, with a spacious cabin featuring an abundance of legroom for both driver and passengers, and a host of refined features throughout, from premium leather seats and soft touch materials to state of the art technologies. As impressive as the Avalon is when it's simply in park, it is an absolute joy to drive, with a sleek, aerodynamic design and precise handling to give you control over every road and through every turn, today and tomorrow.

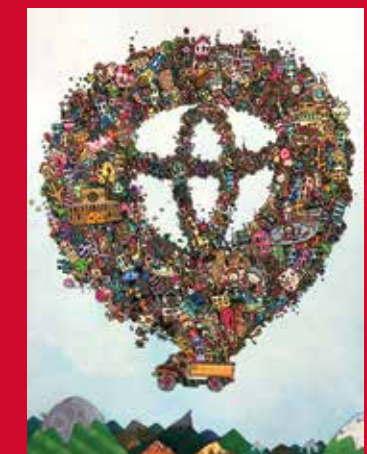
FRONT COVER
Limited shown in Magnetic Grey Metallic.



Touring shown in Blizzard Pearl.
Limited shown in Magnetic Grey Metallic.

Sometimes, a car really is a work of art.

Toyota's commitment to develop cars for today and tomorrow led to the design of the Avalon – a sophisticated and modern vehicle that inspires with its looks, performance, and technology. And that same kind of spirit, passion, and innovation continues on with The Toyota Dream Car Contest. Now in its third year, the contest encourages young Canadians to unleash their creativity to dream about their future, and what the future of the automotive industry might look like. It's fun. It's educational. And through this contest, the next generation of inventors, thinkers, and dreamers can give us a glimpse of tomorrow, today.



Dream Society by Grace
Age 15



Power Tilt and Slide Moonroof with Sunshade



Qi Wireless Charging



Display Audio System⁴ with Navigation⁵



Spacious Seating



Premium Leather Seat Interior

Premium comes standard.

When you sit in the new 2016 Avalon, you may feel like it was created just for you. That's no coincidence. Every element of the Avalon's design has been created to give you the comfort and sophistication you want, with the convenience and intuitive technology you demand. You'll feel it the moment you sit in the roomy and beautifully stitched premium leather seats. You'll sense it with the kind of upgrades you'll find on the Avalon Limited, like heated and ventilated front seats, and heated rear seats. You'll know it with intuitive technologies that simplify your life and let you stay connected, like the Bluetooth^{®3} hands-free calling, 6.95-inch Touch Panel Display Audio System⁴ with Navigation⁵, and available Qi Wireless Charger that lets you charge your Qi-compatible device by placing it on the nonslip surface. You might just even hear the difference, thanks to Avalon's acoustically laminated windshield and front passenger-side glass, which virtually eliminate ambient noise.

Enjoying the ride is just the beginning.



Part of Avalon's whisper-quiet ride can be attributed to its smooth and powerful 3.5-litre V6 engine. Incorporating Double Overhead Cams (DOHC), four valves per cylinder, and Dual Variable Valve Timing with intelligence (Dual VVT-i), it produces an impressive 268 horsepower and 248 lb.ft. of torque. It's also incredibly efficient, with a combined city/highway fuel consumption rating of 9.7 L/100 km.

Touring shown in Blizzard Pearl.

AERODYNAMIC DESIGN For speed and efficiency, we aerodynamically sculpted every inch of Avalon's metal for better airflow and stability. The 2016 Avalon has a drag coefficient of only 0.28, thanks to its raked windshield, sloping roofline, and through the many small details that make a big difference in the wind tunnel – and on the road. Underneath the chassis, specially shaped diffuser panels reduce turbulence, resulting in greater stability and reduced wind noise.



DRIVE MODE SELECT Drive Mode Select enables you to make your Avalon more responsive or efficient with the simple press of a button. ECO mode moderates the throttle response and climate settings for increased fuel efficiency. Normal mode provides the optimal balance of fuel efficiency and engine performance. Sport mode alters the powertrain for faster gear changes and more dynamic throttle mapping.

PADDLE SHIFTERS Personalize your driving experience through steering wheel-mounted paddles that allow manual gear selection. To upshift, simply pull the right paddle; to downshift, pull the left paddle. The system will even match revs during downshifts for smoother driving and better control.

INDEPENDENT SUSPENSION Avalon has a fully independent suspension that adapts to the road, helping give you more control.



Toyota
Safety
Sense

Safety designed around you.

The road can be unpredictable. That's why the 2016 Avalon is equipped with ten standard airbags¹ and integrated features like the Star Safety System™ and the available Toyota Safety Sense (TSS-P).™ Our newly developed Toyota Safety Sense is an active safety package that combines Pre-Collision System with Pedestrian Detection (PCS/PD),¹⁰ Lane Departure Alert with Steering Assist (LDA/SA),¹¹ Auto High Beams (AHB)¹² and Dynamic Radar Cruise Control¹³ to help assist you. Each safety feature talks to the other, creating in-the-moment safety designed to support your awareness and decision-making on the road.



AVAILABLE BLIND SPOT MONITOR⁹ WITH REAR CROSS-TRAFFIC ALERT⁹ The available Blind Spot Monitor (BSM)⁹ with Rear Cross-Traffic Alert (RCTA)⁹ uses radar technology to help you identify vehicles that may not be visible when changing lanes or backing out of a parking space. When a vehicle is detected, a warning indicator illuminates on the appropriate side-view mirror.

BACKUP CAMERA When reversing, the 6.95-inch touch-screen on the dash displays an image of what the camera sees behind you.

10 AIRBAGS¹ Avalon comes standard with a total of ten airbags,¹ including dual-stage driver and front passenger airbags, driver and front passenger knee airbags, driver and front passenger seat-mounted side airbags, rear seat-mounted side airbags, and front and rear head/side curtain airbags.



Touring shown in Blizzard Pearl.

Avalon Features

INTERIOR

ENTERTAINMENT & CONNECTIVITY

	Touring	Limited
6.95" Touch Panel Display Audio ⁴ w/Navigation, ⁵ AM/FM/CD Player, 9-Speakers	●	–
6.95" Touch Panel Display Audio ⁴ w/Navigation, ⁵ JBL® AM/FM/CD Player, 11-Speakers	–	●
SiriusXM® Satellite Radio, Gracenote® Album Cover Art	●	●
USB Input Port, Auxiliary Input Jack, Bluetooth® ³ Hands-Free Phone Connectivity/Wireless Audio Streaming/Phone Book Access	●	●
Text-to-Speech Capabilities, AM/FM Cache Radio	●	●
Advanced Voice Recognition	●	●
Steering Wheel Bluetooth® ³ & Audio Controls	●	●
Backup Camera w/Projected Path	●	●
3.5" TFT Multi-Information Display	●	●
Qi Wireless Charging	–	●

COMFORT & CONVENIENCE

Dual Zone Automatic Climate Control w/Air Filter & Rear Seat Vents	●	–
Tri-Zone Automatic Climate Control w/Air Filter & Rear Seat Vents	–	●
Power Door Locks w/Shift-Linked Automatic Lock/Unlock Feature & Anti-Lockout Feature	●	●
Power Windows w/Auto Up/Down & Jam Protection	●	●
Optitron Instrumentation: Speedometer, Tachometer, Coolant Temperature, Fuel Gauges	●	●
Auto-Dimming Rear View Mirror w/Digital Compass	●	●
Dual Illuminated Vanity Mirrors	●	●
Push Button Start, Smart Key System	●	●
3-Spoke, Tilt & Telescopic Steering Wheel w/Paddle Shifters	●	●
Leather-Wrapped Steering Wheel & Shift Knob	●	●
Carpet Floor Mats, All-Season Floor Mats	●	●
Digital Quartz Clock	–	●
eBin™ Sliding Electronic Device Holder w/Wire Management System	●	●
Front Centre Console Storage Area w/Sliding Armrest	●	●
Front & Rear Cupholders, Coat Hooks	●	●
Integrated Garage Door Opener	●	●
Front & Rear Area Lamps	●	●
Door Courtesy Lamps	●	●
Front Seat Map Lamps	●	●
Interactive TFT Colour Climate Control Panel	–	●
Trunk-Mounted Cargo Net	●	●
Accessory Power Outlet (12 V)	●	●
Illuminated Entry/Exit Fade-Out System	●	●

INTERIOR (cont'd)

SEATING & TRIM

Premium Leather Seat Surfaces	●	–
Perforated Leather Seat Surfaces	–	●
Heated Driver & Front Passenger Seats w/Variable Heat Setting	●	–
Heated & Ventilated Driver & Front Passenger Seats w/Variable Heat Setting	–	●
Power 8-Way Adjustable Driver & 4-Way Front Passenger Seats	●	–
Power 10-Way Adjustable Driver & 8-Way Front Passenger Seats	–	●
Driver Seat Memory System	●	●
Rear Bench Seat w/Headrests, Fold-Down Centre Armrest, Cupholders & Pass-Through	●	●
Heated Rear Bench Seat	–	●
Simulated Leather Door Trim	●	●
Smoked Chrome Inner Door Handles	●	●
Aluminum Door Scuff Plates	–	●

EXTERIOR

Electric Rear Window Defroster w/Timer	●	●
Acoustic Noise Reducing Windshield & Driver/Front Passenger Window Glass	●	●
Power Tilt & Slide Moonroof w/Sunshade	●	●
Dual, Heated, Power Adjustable Mirrors w/Integrated Signal Lamps, Mirror Memory System	●	–
Dual, Heated Auto-Dimming Side View Mirrors w/Integrated Signal Lamps & Puddle Lamps, Mirror Memory System	–	●
Variable Intermittent Wipers, Mist Feature	●	–
Rain-Sensing Variable Intermittent Wipers, Mist Feature	–	●
LED Headlamps	●	●
Automatic Headlamp System	●	●
LED Daytime Running Lights	●	●
Dual Chrome Tipped Exhaust Outlets	●	●
Power Rear Window Sunshade	–	●
Power Fuel Lid & Trunk Release	●	●

New Vehicle Warranty Summary – No deductibles – no transfer fees



COMPREHENSIVE COVERAGE 3 years or 60,000 km. This warranty includes 24 hour Roadside Assistance and other benefits, as well as coverage of repairs on any part of the vehicle that is defective in material or workmanship under normal use and maintenance. Different warranties apply to original tires.

POWERTRAIN COMPONENTS 5 years or 100,000 km. This warranty covers repairs to powertrain components that are defective in material or workmanship under normal use and maintenance.

MAJOR EMISSION CONTROL COMPONENTS 8 years or 130,000 km. This warranty covers repairs to specified major emission components that are defective in material or workmanship under normal use and maintenance.

CORROSION PERFORATION 5 years/unlimited distance. This warranty covers any sheet metal found, under normal use, to have developed a perforation from corrosion due to defects in material or workmanship.

SAFETY

 Toyota Safety Sense (TSS-P) TM – includes Pre-Collision System w/Pedestrian Detection (PCS/PD), ¹⁰ Lane Departure Alert w/ Lane Departure Alert with Steering Assist (LDA/SA), ¹¹ Automatic High Beams (AHB) ¹² & Dynamic Radar Cruise Control ¹³	–	●
 Star Safety System TM – includes Vehicle Stability Control (VSC), ⁶ Traction Control (TRAC), Anti-lock Brake System (ABS), Electronic Brake-force Distribution (EBD), Brake Assist (BA) ⁷ & Smart Stop Technology (SST) ⁸	●	●
Dual-Stage Driver & Front Passenger Airbags (SRS) ¹	●	●
Driver & Front Passenger Knee Airbags (SRS) ¹	●	●
Front & Rear Seat-Mounted Side Airbags (SRS) ¹	●	●
Front & Rear Head/Side Curtain Airbags (SRS) ¹	●	●
Driver & Front Passenger Whiplash-Injury-Lessening (WIL) Seats	●	●
All-Position Vertically Adjustable Headrests	●	●
Front Seatbelt Pre-Tensioners & Force Limiters	●	●
All-Position 3-Point Lap & Shoulder Belts	●	●
Front Seatbelt Anchor Height Adjusters	●	●
Anchor Points for Child Restraint Seats	●	●
Child Protector Rear Door Locks	●	●
Rear Side Seatbelt Comfort Guides	●	●
Engine Immobilizer	●	●
Vehicle Anti-Theft System	●	●
Blind Spot Monitor (BSM) ⁹	–	●
Rear Cross-Traffic Alert (RCTA) ⁹	–	●
Cruise Control	●	●
Direct Tire Pressure Monitoring System	●	●

Genuine Accessories

Block Heater
Bodyside Mouldings
Cargo Mat
Paint Protection Film

Visit accessories.toyota.ca or your local Dealer for details.

Avalon Specifications

MECHANICAL

ENGINE

Type

3.5 Litre, V6, DOHC, 24-Valve, Dual Variable Valve Timing w/Intelligence (Dual VVT-i), Direct Ignition System (DIS), Acoustic Control Induction System (ACIS), Drive Mode Select

Compression Ratio

10.8:1

Horsepower

268 hp @ 6200 rpm

Torque

248 lb.ft. @ 4700 rpm

DRIVETRAIN

Drive Configuration

Front Engine/Front Wheel Drive

Transmission

6-Speed, Automatic, Electronically Controlled Transmission w/Intelligence (ECT-i), Sequential Shift Mode, Paddle Shifters

CHASSIS

Suspension

Front: MacPherson Struts w/Offset Coil Springs & Stabilizer Bar

Rear: Dual-Link Independent, MacPherson Struts w/Offset Coil Springs & Stabilizer Bar

Brakes

Power-Assisted, Ventilated Front Discs, Solid Rear Discs

Steerin

Electric Rack & Pinion w/Variable Power Assist

Wheels & Tires

18" Aluminum Alloy Wheels, Wheel Locks

P225/45R18 All-Season Tires, Temporary Spare

DIMENSIONS

	mm (in.)	Touring	Limited
Length	4965 (195.4)	●	●
Width	1835 (72.2)	●	●
Height (Unloaded)	1460 (57.5)	●	●
Wheelbase	2820 (111.0)	●	●
Track	Front: 1590 (62.6)	●	●
	Rear: 1580 (62.2)	●	●
Headroom	Front: 954 (37.6)	●	●
	Rear: 963 (37.9)	●	●
Legroom	Front: 1070 (42.1)	●	●
	Rear: 995 (39.2)	●	●
Shoulder Room	Front: 1478 (58.2)	●	●
	Rear: 1447 (57.0)	●	●
Turning Circle	<i>m (ft.)</i>	●	●
	12.2 (40.0)	●	●
Coefficient of Drag	<i>cd</i>	●	●
	0.28	●	●
Ground Clearance	141 (5.6)	●	●

WEIGHT & CAPACITIES

Curb Weight	<i>kg (lb)</i>	●	–
	1610 (3548)	–	●
	1625 (3582)	–	●
Seating Capacity	5	●	●
Cargo Capacity	<i>litres (cu.ft.)</i>	●	●
	453 (16.0)	●	●
Fuel Capacity	<i>litres (imperial gallon)</i>	●	●
	64 (14.2)	●	●

FUEL CONSUMPTION RATING²

City/Highway/Combined	L/100 km	mpg (imperial gallon)	Touring	Limited
	11.4/7.6/9.7	25/37/29	●	●

Disclaimers

(1) All Toyota vehicles shown in this brochure have Supplemental Restraint Systems (SRS). For important safety information about the Supplemental Restraint System in a particular vehicle, please see the Owner's Manual or contact your local Toyota Dealer. (2) Fuel efficiency estimates were determined using approved Government of Canada Test Methods. Actual fuel consumption will vary based on driving habits and other factors. (3) Do not use the hands-free phone system if it will distract you. A compatible Bluetooth-enabled phone must first be paired. Phone performance depends upon software, coverage and carrier. (4) Driving while distracted can result in loss of vehicle control. Always drive safely, obey traffic laws and focus on the road and traffic conditions while driving. (5) Availability and accuracy of the information provided by the navigation system is dependent upon many factors. Use common sense when relying on information provided. Services and programming subject to change. Services not available in every city or roadway; updates may be available at an additional cost from your Dealer. Please see your Navigation System Owner's Manual and your Toyota Dealer for further details. (6) Vehicle Stability Control (VSC) is an electronic system designed to help the driver maintain vehicle control under adverse conditions. It is not a substitute for safe driving practices. Factors including speed, road conditions and driver steering input can all affect whether VSC will be effective in preventing a loss of control. (7) Brake Assist is designed to help the driver take full advantage of the benefits of ABS. It is not a substitute for safe driving practices. Braking effectiveness also depends on proper brake-system maintenance and tire and road conditions. (8) Smart Stop Technology operates only in the event of certain simultaneous brake and gas pedal applications. When engaged, the system will reduce engine power to help the brakes bring the vehicle to a stop. Factors including speed, road conditions, and driver input can all impact stopping distance. Smart Stop Technology is not a substitute for safe and attentive driving and does not guarantee instant stopping. (9) Do not rely exclusively on the Blind Spot Monitor System and Rear Cross-Traffic Alert System. They are not collision-avoidance systems or substitutes for safe and attentive driving. (10) The Pre-Collision System is designed to help reduce the crash speed and damage in certain frontal collisions only. The Pedestrian Detection System is designed to detect the presence of a pedestrian ahead of the vehicle, to determine if impact with the pedestrian is imminent and to help reduce impact speed. Neither are a collision-avoidance system nor a substitute for safe and attentive driving. (11) Lane Departure Alert is not a collision-avoidance system or a substitute for safe and attentive driving. Effectiveness depends upon many factors. (12) Automatic High Beam system operates at speeds above 40 km/h. Situations such as a dirty windshield, variable weather, lighting conditions and hilly terrain will limit effectiveness, requiring the driver to manually turn off. (13) Dynamic Radar Cruise Control is not a collision-avoidance system or a substitute for safe and attentive driving practices.

Details on the above features can be found in the Owner's Manual or contact your local Toyota Dealer.

Toyota Canada Inc. Every effort has been made to ensure the specifications and equipment shown are accurate based on information available at time of printing. In some cases, certain changes in production capacity, standard equipment, options or product delays may occur which would not be reflected in this brochure. Toyota Canada Inc. reserves the right to make these changes without notice or obligation. The Toyota website toyota.ca – or your Toyota Dealer is your best source for up-to-date information.





Prius c



Prius



Prius v



Camry Hybrid



RAV4 Hybrid



Highlander Hybrid



Yaris Hatchback



Yaris Sedan



Corolla



Camry



Venza



Avalon



Sienna



RAV4



Highlander



4Runner



Sequoia



Tacoma



Tundra

You can rely on every Toyota to get you wherever you need to go today. And with our commitment to safety, reliability, and value, we'll be on the road with you for many years to come.



Toyota recognizes its duty to safeguard the environment. Please recycle. Printed in Canada. C0002-0436E-25 8M