

THE 2021
XT5

A CLOSER **LOOK**



Cadillac



US model shown

MAKES SAFETY LOOK STYLISH

With standout styling and standard safety features such as Lane Keep Assist with Lane Departure Warning¹, Safety Seat Alert¹ and Front Pedestrian Braking¹, this Cadillac crossover is truly a thing of beauty.



¹Read the vehicle's Owner's Manual for important feature limitations and information.

GRABS YOUR ATTENTION. SUBTLY.

Cadillac's patented Safety Alert Seat¹ sends a discreet pulse to the left, right or both sides of the driver's seat, indicating the direction of the threat—left, right, front or rear.



NIGHT VISION

Fewer surprises in the dark. The XT5 comes with an available Night Vision¹ system that uses thermal technology to show people and large animals detected ahead. This can enhance night driving safety by making you aware of potential hazards.



FRONT PEDESTRIAN BRAKING

Front Pedestrian Braking¹ can alert you when an imminent collision with a pedestrian ahead is detected and can help reduce the severity or avoid the collision by automatically applying emergency braking if you have not already.



¹Safety or driver assistance features are no substitute for the driver's responsibility to operate the vehicle in a safe manner. The driver should remain attentive to traffic, surroundings and road conditions at all times. Visibility, weather, and road conditions may affect feature performance. Read the vehicle's Owner's Manual for more important feature limitations and information.



SELECTED STANDARD SAFETY AND DRIVER ASSISTANCE FEATURES

- AUTOMATIC EMERGENCY BRAKING¹
- FORWARD COLLISION ALERT¹
- FRONT AND REAR PARK ASSIST¹
- FRONT PEDESTRIAN BRAKING¹
- HD REAR VISION CAMERA¹
- LANE KEEP ASSIST WITH LANE DEPARTURE WARNING¹
- SAFETY ALERT SEAT¹
- FOLLOWING DISTANCE INDICATOR¹
- REAR SEAT REMINDER²
- TEEN DRIVER
- INTELLIBEAM³ HEADLAMPS WITH CORNERING FUNCTION

¹Read the vehicle Owner's Manual for important feature limitations and information.

²Does not detect people or items. Always check rear seat before exiting.

³IntelliBeam can automatically turn the vehicle's high-beam headlamps on and off according to surrounding traffic conditions.



SELECTED AVAILABLE SAFETY AND DRIVER ASSISTANCE FEATURES

- ADAPTIVE CRUISE CONTROL—ADVANCED¹
- ENHANCED AUTOMATIC EMERGENCY BRAKING¹
- AUTOMATIC PARKING ASSIST WITH BRAKING¹
- REVERSE AUTOMATIC BRAKING¹
- HD SURROUND VISION¹
- HEAD-UP DISPLAY¹
- ADVANCED SECURITY PACKAGE¹
- REAR PEDESTRIAN ALERT¹
- REAR CAMERA MIRROR¹
- RAINSENSE™ FRONT WIPERS
- AUTOMATIC SEAT BELT TIGHTENING
- NIGHT VISION¹

¹Read the vehicle's owner's manual for important feature limitations and information.

STYLED TO TURN HEADS

The Cadillac crest makes a statement with every arrival, while sharp lines and sweeping curves meet jewel-like lighting elements for a style that's truly moving.



VISIONARY LIGHTING

Cadillac's jewel-like headlamps are both stunning and purposeful. Our standard LED headlamps feature IntelliBeam¹, which automatically switches between high and low beams as vehicles approach, while cornering lamps cast light into corners as you drive through them.



¹IntelliBeam can automatically turn the vehicle's high-beam headlamps on and off according to surrounding traffic conditions.

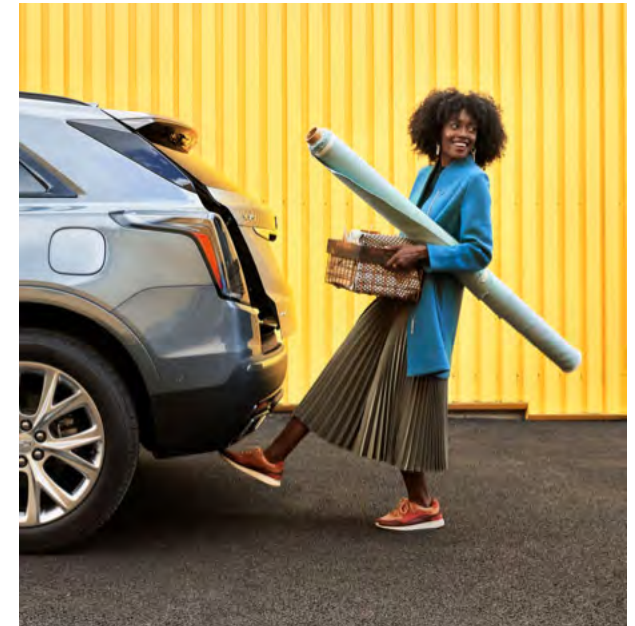
20" 12-SPOKE ALLOY WITH PEARL NICKEL FINISH

Standard on Sport, the 20" 12-Spoke alloy wheels with Pearl Nickel finish make a statement no matter what type of road you're taking on.



HANDS-FREE LIFTGATE

Complete with Cadillac logo projection, the available Hands-Free Power Liftgate opens and closes with a simple kicking gesture. The memory height function lets you program its opening height to ensure a perfect fit in any space.



AN ELEVATED ENVIRONMENT

Cadillac designers equipped the XT5 cabin with authentic materials like natural woods or carbon fibre and cut-and-sewn leathers, then punctuated them with aluminum and carbon fibre accents for a rich yet understated feel.



RECONFIGURABLE SPACE

60/40 rear seats can be folded flat to reveal up to 63 cubic feet (1,784 litres) of space¹. And with split-fold functionality, nothing gets left behind.



¹With rear seats folded down. Cargo and load capacity limited by weight and distribution.

HEATED STEERING WHEEL

Turn a chilly morning commute into a comfortable drive. With the push of a button, the available heated steering wheel turns warm to the touch.



ULTRAVIEW SUNROOF

The available UltraView[®] Power Sunroof spans both seating rows, providing every passenger a clear view of the sky.



ENGINE PERFORMANCE

The 3.6L V6 engine, available on Premium Luxury and standard on Sport trim, is designed to stand out with 310 hp [231 kW] and 271 lb-ft [366 N-m] of torque. The 2.0L engine, standard on Luxury and Premium Luxury trim, has 235 HP* [175 kW] and 258 lb-ft [350 N-m] of torque* with innovative technologies such as Active Fuel Management.



*With Premium Gasoline

9-SPEED, ELECTRONICALLY CONTROLLED

Electronic Precision Shift moves you from Park to Drive in a simple gesture. It also puts you in command of an advanced 9-speed automatic transmission that is both efficient and responsive.



DRIVER-SELECTABLE MODES

Not only does the XT5 respond to changing road conditions, it adapts to road conditions. All-Wheel Drive, with four distinct calibrations, and Front-Wheel Drive, with three distinct calibrations, support different driving dynamics. All with just the press of a button.



REAL-TIME DAMPING

Every two milliseconds, available Real-Time Damping adjusts the suspension to road and driving conditions for a more calculated and comfortable ride. That's picture-perfect precision.



KEEP CONNECTED

The XT5 offers a collection of high-tech features that are both practical and indulgent. Whether it's cameras to help with safety or the need to quickly find your favourite station, you can keep your eyes on the road and stay connected wherever you are headed.



US model shown

IMMERSE YOURSELF WITH RICH, BOSE SOUND

14-speakers will surround you with the Bose® Performance Series speaker system, available with the Premium Luxury and Sport trim models.



Bose is a registered trademark of Bose Corporation.

¹Safety or driver assistance features are no substitute for the driver's responsibility to operate the vehicle in a safe manner. The driver should remain attentive to traffic, surroundings and road conditions at all times. Visibility, weather, and road conditions may affect feature performance. Read the vehicle's Owner's Manual for more important feature limitations and information. ²Cadillac user experience functionality varies by model. Full functionality requires compatible Bluetooth® and smartphone. Some devices require USB connectivity. ³Vehicle user interface is a product of Apple and its terms and privacy statements apply. Requires compatible iPhone and data plan rates apply. Apple CarPlay is a trademark of Apple Inc. Siri, iPhone and iTunes are trademarks for Apple Inc, registered in the U.S. and other countries. ⁴Vehicle user interface is a product of Google and its terms and privacy statements apply. Requires the Android Auto app on Google Play and an Android compatible smartphone running Android™ 5.0 Lollipop or higher. Data plan rates apply. Android Auto is a trademark of Google LLC.

CONNECTIVITY FEATURE HIGHLIGHTS

REAR CAMERA MIRROR

An innovative look back. Available on Premium Luxury and Sport models, the Rear Camera Mirror¹ allows you to use either a traditional rear view mirror or a rear view camera mirror display that provides a wider, less obstructed view to check for anything behind the vehicle.



CADILLAC USER EXPERIENCE²

XT5 provides a seamless user experience with cloud-based Natural Voice Recognition, steering-wheel controls, an available Rotary Infotainment Controller with jog functionality and features including wireless Apple CarPlay^{®3} and wireless Android Auto^{™4} compatibility.



-US model shown

SPECS

- **2.0L TURBO FOUR-CYLINDER ENGINE**

235 HP* [175 KW] AND 258 LB-FT OF TORQUE* [350 N-m]

- **3.6L V6 ENGINE**

310 HP [231 KW] AND 271 LB-FT [366 N-m] OF TORQUE¹

- **CARGO VOLUME²**

30.0 CU. FT., (850 LITRES) REAR SEATBACKS UP

63.0 CU. FT., (1,784 LITRES) REAR SEATBACKS DOWN

*With Premium Gasoline

¹SAE Certified

²Cargo and load capacity limited by weight and distribution



TRIMS

LUXURY

Luxury features:



- 2.0L Turbo four-cylinder engine
- Automatic Emergency Braking¹
- Forward Collision Alert¹
- Safety Alert Seat¹
- Front and Rear Park Assist¹
- Rotary controller with jog functionality

PREMIUM LUXURY

Includes Luxury features, plus:



- Lane Change Alert with Side Blind Zone Alert¹
- Rear Cross Traffic Alert¹
- UltraView Power Sunroof
- Wireless Phone Charging²
- Cargo Management System with adjustable cargo fence and retractable cargo shade

¹Read the vehicle's Owner's Manual for important feature limitations and information.

²The system wirelessly charges one compatible mobile device. Some phones have built-in wireless charging technology and others require a special adaptor/back cover. To check for phone or other device compatibility, see cadillactotalconnect.ca or consult your carrier.

TRIMS, CONTINUED

SPORT

Includes Premium Luxury features, plus:



- 3.6L V6 engine
- Sport Control All-Wheel Drive (AWD) System
- Chassis damping control
- 20" 12-Spoke alloy wheels with Pearl Nickel finish
- High-Gloss Black exterior accents and clear lens tail lamps
- Body-colour door handles

PLATINUM PACKAGE

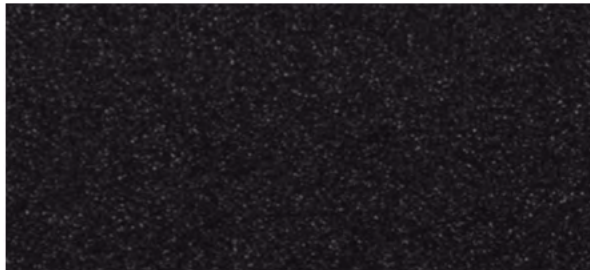
Available on Premium Luxury and Sport trims:



- Real-time damping suspension chassis (standard on Sport trim)
- Performance suspension (standard on Sport trim)
- Semi-Aniline leather seats
- Leather-wrapped instrument panel, console and door trim
- Microfibre sueded headliner
- Unique interior colours and decor trim
- Cadillac User Experience with embedded navigation¹
- Bose^{®2} Performance Series 14-speaker system
- Tri-zone automatic climate control
- 20" 6-Split Spoke alloy wheels with Polished/Android finish (Premium Luxury only)
- Enhanced Visibility and Technology Package

¹Full functionality requires compatible Bluetooth and smartphone, and USB connectivity for some devices. At time of posting, detailed map coverage is available for most major urban areas of the United States and for certain metropolitan areas of Canada (Vancouver, Calgary, Edmonton, Winnipeg, Windsor, London, Toronto, Ottawa, Montreal, Quebec City and Halifax). Coverage is significantly limited outside these areas. ²Bose is a registered trademark of Bose Corporation.

EXTERIOR COLOURS



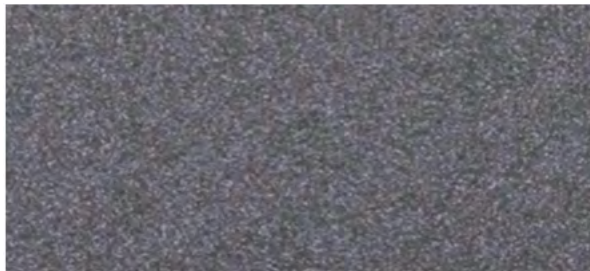
STELLAR BLACK METALLIC¹



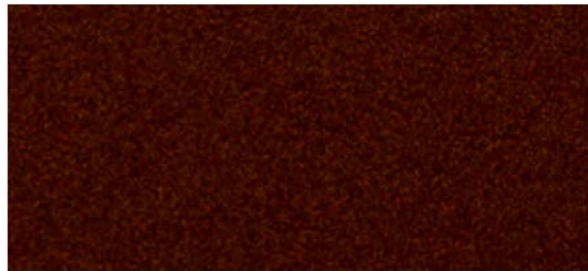
CRYSTAL WHITE TRICOAT¹



SHADOW METALLIC¹



SATIN STEEL METALLIC



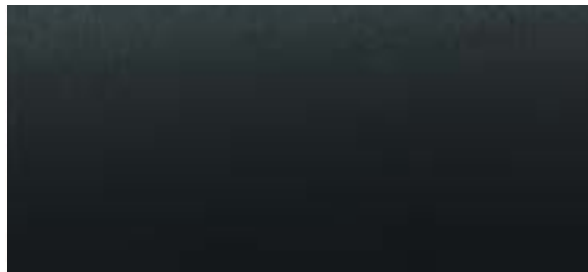
GARNET METALLIC¹



DARK MOON BLUE METALLIC¹



INFRARED TINTCOAT¹



WILDER METALLIC¹

¹Available at extra charge.

INTERIOR COLOURS



JET BLACK

Leatherette Seating Surfaces

Available on Luxury.



JET BLACK

Leather Seating Surfaces with Mini-Perforated Inserts

Available on Premium Luxury and Sport.



JET BLACK

Semi-Aniline Leather Seats with Chevron perforated Inserts

Available on Premium Luxury and Sport.



CIRRUS

Dark Titanium accents and Leather Seating Surfaces with Mini-Perforated Inserts

Available on Premium Luxury.



CIRRUS

Jet Black accents and Leather Seating Surfaces with Mini-Perforated Inserts

Available on Sport.



KONA BROWN SAUVAGE

Jet Black accents and Leather Seats with Mini-Perforated Inserts

Available on Premium Luxury and Sport.

INTERIOR COLOURS, CONTINUED



SEDONA SAUVAGE

Jet Black accents and Leather Seating Surfaces with Mini-Perforated Inserts

Available on Premium Luxury.



MAPLE SUGAR

Jet Black accents and Semi-Aniline Leather Seats with Chevron Perforated Inserts

Available on Premium Luxury and Sport.

WHEELS



18" Multi-Spoke alloy with Bright Silver finish

Standard on Luxury.



18" 6-Split-Spoke alloy with Pearl Nickel finish

Standard on Premium Luxury.



20" 12-Spoke alloy with Pearl Nickel finish

Standard on Sport.



20" 6-Split-Spoke alloy with Polished/Android finish

Available on Premium Luxury, available only with Platinum Package.



20" 12-Spoke Diamond Cut alloy wheels with Dark Android Satin finish pockets

Available on Sport only.



20" Ultra Bright machined Pearl Nickel wheels¹

Available on Luxury, Premium Luxury and Sport, available only with Platinum Package. Dealer-installed accessory.



20" Midnight Grey wheels¹

Available on Luxury, Premium Luxury, and Sport. Dealer-installed accessory.



20" Polished wheels¹

Available on Luxury and Premium luxury, available only with Platinum Package. Dealer-installed accessory.

¹Use only GM-approved tire and wheel combinations. See <https://www.cadillaccanada.ca/en/accessories> for important wheel and tire information, or see your dealer.

WARRANTY

PEACE OF MIND, STANDARD WITH EVERY NEW 2021 CADILLAC XT5

Experience the Cadillac comprehensive coverage and warranty that comes standard with every new 2021 Cadillac XT5 purchased or leased in Canada. Simply, it is designed around you to make it easy to keep your Cadillac like new – and give you the confidence you deserve when you need it most.

- 4-year/80,000 KM¹ Base Warranty Coverage²
- 6-year/110,000 KM¹ Powertrain Component Warranty Coverage² (includes diesel components)
- 4-year/80,000 KM¹ sheet metal (corrosion) Warranty Coverage²
- 6-year/unlimited KM¹ sheet metal (rust through) perforation Warranty Coverage²

See warranty booklet for details <https://www.cadillaccanada.ca/en/2021warranty> and your owner's manual <https://my.gm.ca/cadillac/en/how-to-support/manuals> for information regarding your warranty benefits.

¹Whichever comes first

²Limitations and conditions apply. See Warranty Booklet for details, and your Owner's Manual for information regarding maintaining your warranty benefits