

14E-SERIES





A CANADIAN FAVOURITE. FOR OVER 50 YEARS.

When trades, fleets, community groups and other organizations have a job to do, the Ford E-Series full-size van is the vehicle they choose to get it done. And for good reason. Offering a wide range of vans, wagons, cutaways and stripped chassis, the versatile E-Series can be configured with GVWRs ranging from 8,520 to 14,500 lbs. (3,865 to 6,577 kg). The hardworking E-Series is ideal for moving products, people and equipment – sometimes all at once. Its longevity and dependability is the epitome of Built Ford Tough.® Go further in a 2014 Ford E-Series.

Vehicles throughout this catalogue may be shown with optional and aftermarket upfit equipment.

14E-SERIES
ford.ca



FULL-SIZE VAN. FULLY CAPABLE.

E-Series Vans can confidently tow up to 10,000 lbs. (4,536 kg)¹ with the help of smart features like standard telescoping trailer tow mirrors, AdvanceTrac[®] with RSC[®] (Roll Stability Control[™]) and a factory-integrated trailer brake controller (TBC).^{2,3} On the 6.8L Triton[®] V10² with TorqShift[®], a selectable tow/haul mode automatically compensates for altitude, grade and load conditions. Our full-colour rear view camera² shows you what's behind the vehicle when in Reverse. It also includes a distance guide and centre line to help you line up with a hitch. You can haul up to 278 cu. ft. (7,881 litres) of cargo with peace of mind thanks to sturdy double-wall construction that helps protect the outer walls from shifting loads. Plus, you can choose sliding² or swing-out side cargo doors, or opt for windows all around.² Whatever you choose, you'll get the job done.



10,000 LBS.



MAX. TOWING¹

ROLL



STABILITY²

REVERSE



SENSORS²

E-250 Cargo Van. Ingot Silver Metallic. Available and aftermarket equipment.

¹When properly equipped. ²Available feature. ³TBC verified to be compatible with electrically actuated drum brakes and certain electric-over-hydraulic brake systems. See your Ford of Canada Dealer for details.

14E-SERIES
ford.ca





ON SITE. ON ROAD. ON SCHEDULE.

Staying connected helps get the job done. It's easy to stay in touch with voice-activated Ford SYNC,^{®1} which delivers hands-free calls, reads your text messages aloud, and plays music in response to simple voice commands. Once paired with your phone, SYNC can download your contacts and play Bluetooth[®]-streaming music. Or, plug in your MP3, USB or iPod[®] to listen to your favourite artist or podcast. Just touch a button on the steering wheel and say things like "Call: Dispatch" or "Play playlist: Country." With SiriusXM[®] Satellite Radio,² you can listen to your favourites all across Canada. Your 6-month prepaid subscription gets you the best in audio entertainment including 100% commercial-free music from every genre, world-class news, sports, comedy and entertainment. Upgrade to the voice-activated Navigation System² for interactive maps, complete with 3D landmarks. All keeping you on task and on schedule.

Plug it in. A convenient 110-volt power outlet² in the instrument panel is another way you can stay connected to the office or other job sites. Run your laptop or recharge your power equipment battery.

Charge up. With this convenient dash-mounted USB port² you can listen to your favourite tunes from a flash drive or plug in your phone to keep it charged and at the ready.

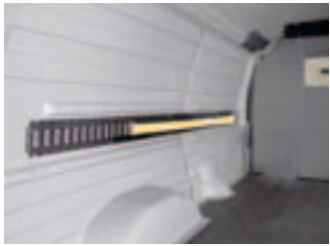
Power up. Operate up to 4 high-power relays with the pre-wired upfitter switches² conveniently located at the top and centre of your instrument panel.



¹Available feature. Some mobile phones and some digital media players may not be fully compatible. Driving while distracted can result in a loss of vehicle control. Only use mobile phones and other devices, even with voice commands, when it is safe to do so. SYNC voice recognition available in English, French and Spanish. Some features may be locked out while the vehicle is in motion. ²Available feature.

14E-SERIES
ford.ca





MANY NEEDS. ONE SOLUTION.

In E-Series Wagon, everyone gets the VIP treatment. Equip yours to seat 7, 8, 11, 12 or 15 passengers.¹ In E-Series Van, help keep your equipment organized and easily accessible with our wide range of storage solutions by Masterack.² With E-Series, you can build the vehicle you want, just the way you want it. That includes the E-Series Cargo Van with the Crew Van Package, which easily transports people and gear to wherever they're needed. There's room for up to 5 passengers, who are separated from the cargo bay by a sturdy, metal-mesh bulkhead. It's the best of both worlds.

E-350 XLT 15-Passenger Extended Length Wagon. Medium Pebble cloth trim. Available equipment.

EconoCargo® Cargo Management System.³

QuietFlex® Composite Racks and Bins Package.³

Masterack Steel Racks and Bins Package.³

Electrical Contractor Upgrade³ on Masterack Steel Racks and Bins Package.

E-250 Cargo Van. Crew Van Package. Medium Flint cloth front and vinyl rear trim. Available equipment.

¹Passenger and cargo capacity limited by weight and weight distribution. 11-, 12- and 15-passenger vehicles may be classified as buses and may require appropriate licensing. ²For more information on Masterack and other available equipment, please see the Available Packages and Optional Features page for E-Series Van in the specifications section of this catalogue. ³Available feature.

READY FOR DUTY. HEAVY DUTY.

From demanding emergency service to a multitude of trades to shuttle transportation, E-Series offers you an extensive selection of van-based cutaways, ready to be equipped for duty. Their outstanding capacities, rugged capabilities and Built Ford Tough® reputations have made E-Series essential to countless businesses for over 50 years.



E-350 SRW Cutaway. Vermillion Red. Available and aftermarket equipment.

E-350 SRW: With the standard 5.4L V8 FFV engine, the E-350 SRW configuration delivers 255 horsepower, 350 lb.-ft. of torque and a GVWR of 10,050 lbs. (4,559 kg).

E-350: Supremely versatile heavy-duty cutaways, the E-350 lineup offers 2 powertrain choices as well as Ambulance, Motorhome, School Bus and Shuttle Bus Prep Packages.¹ The 158" and 176" wheelbase chassis are available with an impressive 5,000-lb. (2,268-kg) front GAWR and a GVWR of up to 12,500 lbs. (5,670 kg).

E-450: The 5.4L V8 FFV is standard on E-450. Spec giant payloads, and select GCWRs up to 22,000 lbs. (9,979 kg)^{2,3} for outstanding towing capability. A 5,000-lb. (2,268-kg) front GAWR is achieved with the 6.8L V10 engine.¹ Choose the 151-litre fuel tank¹ for more usable rear GAWR. And get the stopping power you need to handle huge loads from the standard 4-wheel disc brake system with ABS.



To the rescue. The Ambulance Prep Package,¹ designed for select cutaways equipped with the 5.4L V8 or 6.8L V10 gas engine, offers outstanding payload capability and includes dual 78-amp-hr, 750-CCA heavy-duty batteries.



A foundation for success. What do you do? And how do you do it? Our stripped chassis platform is the perfect foundation for building the specialized truck you need to do it right. See your Ford of Canada Dealer to learn more.

¹Available feature. ²See your Ford of Canada Dealer for details. ³Maximum capabilities shown are for properly equipped vehicles with required equipment. Weight of additional options, equipment, passengers and cargo must be deducted from this weight. Cutaway ratings are based on incomplete vehicles. Final vehicle manufacturer weights and ratings will vary due to upfit and modification requirements.



E-150 Van in Oxford White customized with smoked hood and side window deflectors, keyless entry keypad, forward bumper-mounted warning sensor system by EchoMaster,^{®1} running boards and flat splash guards

Heavy-duty splash guards

All-weather floor mats

Remote start systems

Trailer hitch balls/drawbars

Interior

Carpeted floor mats

Ash cup/coin holder

Auto-dimming rearview mirror

Cargo organizers and protectors

Protective seat covers¹

Electronics

Crew Chief™ powered by Telogis^{®1}

Vehicle Security System

Warning sensor systems¹

¹Ford Licensed Accessory.



E-SERIES SPECIFICATIONS

STANDARD FEATURES

VAN/WAGON/CUTAWAY

Mechanical

4.6L V8 FFV engine (E-150 and E-250)

5.4L V8 FFV engine (E-350 and E-450)

Alternator – 120-amp

Axle – Front Twin-I-Beam

Axle – Solid rear with dual-stage leaf springs

Electronic throttle control (ETC)

Engine block heater – 750-watt

Fuel tank – 125-litre (Van and Wagon)

Fuel tank – 151-litre aft-of-axle (Cutaway and Stripped Chassis)

Handling Package includes front stabilizer bar and heavy-duty front and rear shock absorbers

Power steering

Regular length (Van and Wagon)

Seating

Driver and front-passenger bucket seats with inboard folding armrests

Interior

12-volt powerpoints (2 on instrument panel)

Air conditioning – Manual (front only)

Sun visors – Driver and front passenger

Tachometer

Tilt steering column

Exterior

50/50 swing-out rear doors with 172°-opening door checks (Van and Wagon)

60/40 swing-out side doors (Van and Wagon)

Bumper – Black front with black plastic valance

Daytime running lamps

Headlamps – Sealed-beam

Horn – Dual-note

Solar-tinted glass

Windshield wipers – Intermittent

Safety & Security

3-point lap/shoulder safety belts for all seating positions

AdvanceTrac® with RSC® (Roll Stability Control™) (Van and Wagon only)

Belt-Minder™ driver front safety belt reminder

Brakes – Power 4-wheel disc with Anti-Lock Brake System (ABS)

Front airbags¹ – Driver and front-passenger

SecuriLock® Passive Anti-Theft Engine Immobilizer System (SRW)

Side-intrusion door beams

Tire Pressure Monitoring System (SRW only, excludes spare)

¹Always wear your safety belt, secure children in the rear seat (if equipped) and follow airbag warning label instructions. ²Optional. Requires XLT Premium Wagon. ³Medium Pebble requires Interior Upgrade Package or Premium Van Group on Commercial Van. ⁴Medium Pebble only available with Motorhome Prep Package on Cutaway. ⁵Additional charge. ⁶XL Fleet only.

EXTERIORS



Oxford White



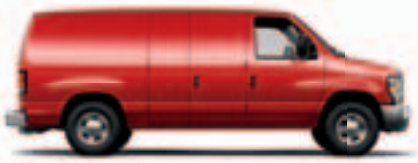
Ingot Silver Metallic



Pueblo Gold Metallic



School Bus Yellow



Vermillion Red



Steel Blue Metallic

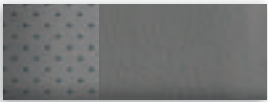


Dark Blue Pearl Metallic

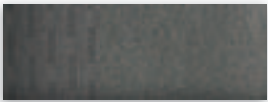


Black

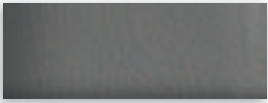
INTERIORS



1 Medium Flint Vinyl



2 Medium Flint Cloth



3 Medium Flint Leather²



4 Medium Pebble Cloth



5 Medium Pebble Leather²

Exteriors	Van³	Interiors Wagon	Cutaway⁴
Oxford White	1 2 4	1 2 3 4 5	1 2 4
Ingot Silver Metallic⁵	1 2	1 2 3	1 2 4
Pueblo Gold Metallic⁵	1 2 4	1 2 3 4 5	
School Bus Yellow⁶	1 2	1 2 3	1 2 4
Vermillion Red	1 2 4	1 2 3 4 5	1 2 4
Steel Blue Metallic²,⁵		1 2 3 4 5	
Dark Blue Pearl Metallic⁵	1 2	1 2 3	1 2 4
Black	1 2 4	1 2 3 4 5	1 2 4

Colours are representative only. See your Ford of Canada Dealer for actual paint/trim options.



E-SERIES LINEUP



VAN

Includes all standard features, plus:

Mechanical
4-speed automatic transmission with overdrive
Transmission oil cooler
16" steel wheels with sport wheel covers
Spare wheel and tire

Seating
2-passenger capacity
Vinyl front bucket seats

Interior
AM/FM stereo with digital clock, 2 speakers and audio input jack
A-pillar grab handles for driver and front passenger
Centre console with colour-keyed slimline engine cover, dual bin stowage and 3 cupholders
Dome lights – Front and rear cargo area
Door locks – Manual
Flooring – Black front vinyl
Glove compartment with auxiliary powerpoint
Headliner – Front vinyl
Mirror – Rearview (when equipped with rear door glass)
Step well pads – Black plastic
Windows – Manual

Exterior
Bumpers – Black
Grille – Black
Mirrors – Sideview, manually telescoping trailer tow with manually adjustable glass and manual convex spotters



WAGON

Includes all standard features, plus:

Mechanical
4-speed automatic transmission with overdrive
Transmission oil cooler
16" steel wheels with sport wheel covers
Spare wheel and tire

Seating
8-passenger capacity (E-150)
12-passenger capacity (E-350 Super Duty® Regular Length)
15-passenger capacity (E-350 Super Duty Extended Length)
Cloth front bucket seats

Interior
12-volt powerpoint located in rear passenger section
AM/FM stereo with digital clock, 6 speakers and audio input jack
A-pillar grab handles for driver and front passenger
Centre console with colour-keyed slimline engine cover, dual bin stowage and 3 cupholders
Coat hooks
Cruise control
Dome lights – Front and rear cargo area
Door locks – Power
Flooring – Black front and rear vinyl
Glove compartment with auxiliary powerpoint
Headliner – Full-length cloth
Mirror – Rearview
SiriusXM Satellite Radio with 6-month prepaid subscription
Step well pads – Black plastic
Windows – Power front

Exterior
Bumpers – Black (XL), chrome (XLT)
Grille – Black (XL), chrome (XLT)
Mirrors – Sideview, aero-style with manually adjustable glass, and manual convex spotters on driver's side (XL)



CUTAWAY

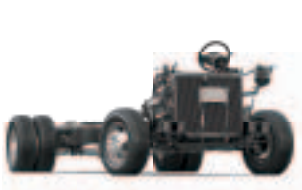
Includes all standard features, plus:

Mechanical
5-speed automatic TorqShift® transmission with overdrive
Auxiliary fuel port
Battery – Heavy-duty
Modified Vehicle Wiring Kit and system
Transmission oil cooler
16" grey-painted steel wheels (SRW)
16" white-painted steel wheels (DRW)

Seating
2-passenger capacity
Vinyl bucket seats

Interior
AM/FM stereo with digital clock, 2 speakers and audio input jack
A-pillar grab handles for driver and passenger
Centre console with colour-keyed slimline engine cover, dual bin stowage and 3 cupholders
Dome light
Flooring – Black vinyl
Glove compartment with auxiliary powerpoint
Headliner – Vinyl

Exterior
Bumper – Front black
Grille – Black



STRIPPED CHASSIS

Includes select standard features, plus:

Mechanical
5-speed automatic TorqShift transmission with overdrive
Auxiliary fuel port
Fuel filler vent hose
Modified Vehicle Wiring Kit
Transmission oil cooler
Wheel nut wrench
16" white-painted steel wheels (DRW)

Seating
Seats not included

Interior
Air conditioning delete
Front airbag delete
Radio delete

Exterior
Bumper – Front delete
Headlamp assembly and switch



16" Steel with Sport Wheel Covers
Standard on Van/Wagon



16" Aluminum
Available on Van/Wagon



AVAILABLE PACKAGES¹

AC Prep Package (Stripped Chassis) – Scroll compressor, condenser, drive belt, tensioner-attaching brackets and bolts
Aerial Bucket Cargo Van Prep Package (Van) – 4,200-lb. (1,905-kg) front GAWR, 7,810-lb. (3,543-kg) 9-leaf rear springs (SRW); rear GAWR reduced to 5,400 lbs. (2,449 kg); requires Modified Vehicle Wiring Kit
Ambulance Prep Package (Van/Cutaway) (5.4L V8 and 6.8L V10 non-FFV engines only) – Auxiliary Heater/AC Connector Package, auxiliary fuel port, 3.73:1 rear axle (Van only), 4.10:1 limited-slip rear axle (E-350 Cutaway only), 4.56:1 limited-slip rear axle (E-450 Cutaway only), 225-amp alternator, dual 78-amp-hr batteries, 60/40 side doors, floor pan extended side and rear, fixed side/rear door tinted glass, front vinyl headliner with HIC extension, maximum front GAWR, modified vehicle wiring kit, side/rear door-trim panels, vinyl sun visors, spare tire and wheel (Cutaway only), manually telescoping trailer tow mirrors (Cutaway only), vinyl front headliner (Cutaway only), frame pucks (Cutaway only), and licence plate bracket (Cutaway only)
Auxiliary Heater/Air Conditioning Connector Package (Cutaway) – Front heater connector and front air conditioning connector
Auxiliary Heater/Air Conditioning Connector Package with Rear Controls (Van/Cutaway) – Auxiliary heater/air conditioning tubes located underbody, front heater, front air conditioning, and rear A/C controls in instrument panel (optional on E-350 Cargo Van, optional with Ambulance Prep Package)
Auxiliary Heater/Air Conditioning Connector Package without Rear Controls (Van) – Auxiliary heater/air conditioning tubes located underbody, front heater and front air conditioning, no auxiliary A/C case (optional on E-350 Cargo Van, included with Ambulance Prep Package)
Commercial Value Package (Van) – Power Group (door locks, front windows, power trailer tow sideview mirrors, Remote Keyless Entry System), rear step bumper, fixed rear cargo door glass, and Reverse Sensing System (not available with Ambulance Prep Package)
Crew Van Package (Van) – 3-passenger 2nd-row vinyl bench seat, full metal-mesh bulkhead, full vinyl headliner, full B-pillar trim panels, low-series polypropylene side/rear door-trim panels, LH lower trim panel behind driver's seat, restraints with metal retractor cover for 2nd-row bench seat, pull handle on 40% side door and RH rear door, and front and rear vinyl floor covering (not available with E-150 Extended Length)
Dome/Cargo Light Kit (Van) – 3 additional cargo lights¹
EconoCargo® Upgrade Package (Van) (General Delivery; req. EconoCargo System) – 2 wire shelving modules 48" H x 16" D x 49" W (1,219-mm H x 406-mm D x 1,244-mm W), 2 single uprights 48" (1,219 mm), 1 double upright 48" (1,219 mm), 6 wire shelves 16" x 48" (406 mm x 1,219 mm) and 2 wire shelves 12" x 48" (305 mm x 1,219 mm) (not available with high-capacity air conditioning)
Mid-Series Exterior Upgrade Package (Van/Wagon/Cutaway) – Black-painted front and rear contour bumpers, chrome grille surround and dual sealed beam headlamps
High-Series Exterior Upgrade Package (Van/Wagon/Cutaway) – Chrome front and rear contour bumpers, chrome grille surround and dual sealed beam headlamps

Insulation Package (Van/Wagon/Cutaway) – Full-length cloth headliner (Van only), front headliner (Cutaway only), cloth sun visors, upper B-pillar trim panel (Van/Wagon only), polypropylene side/rear door-trim panels (Van only), upper B-pillar trim panels, XLT side/rear door-trim panels with insulated padding (Wagon only), and colour-keyed sliding door track (Wagon only) (included and only available with Interior Upgrade Package for Wagon; included with Interior Upgrade Package and Premium Van Group on Van)
Interior Upgrade Package (Van/Wagon/Cutaway) – Full-length carpeting (Van/Wagon only), front carpeting (Cutaway only), high-level side/rear door-trim panels (Van/Wagon only), cloth front captain's chairs, full-length cloth headliner (Van only), front cloth headliner (Cutaway only), cloth sun visors (Van/Cutaway only), full B-pillar trim (Van only), front carpeted floor mats (Van/Wagon only), Insulation Package, power windows and locks, and headlamps on alert (Wagon only)
Masterack® Racks and Bins Package² (Van) – Fully installed steel shelving, drawers and cabinets (includes bulkhead with lockable door)
Modified Vehicle Wiring Kit (Van) – Underhood powertrain circuit tap-ins including power take-off (PTO) functions and vehicle speed output
Motorhome Prep Package (Cutaway) – Chrome front bumper and grille, dual sealed beam headlamps, Power Windows and Locks Group, Radio Prep Package, manual pedestals (seats not included), cloth sun visors, Class I Trailer Tow Prep Package, cruise control, telescoping antenna, maximum front GAWR (E-450 14,000-lb. [1,814-kg] GVWR), frame pucks, and front licence plate bracket (151-litre fuel tank with E-350 Super Duty with 138" or 176" WB)
No-Charge EconoCargo Cargo Management System² (Van) – Insulated polyethylene panels covering walls and cargo doors, hardboard panel covering on ceiling; includes bulkhead with lockable door, 2 tracks and tie-down straps
Premium Van Group (Van) – Dual front captain's chairs, AM/FM stereo/single-CD player with digital clock and 4 speakers, Exterior Upgrade Package, Power Group, cruise control and Insulation Package (req. rear door glass)
QuietFlex® Composite Racks and Bins Package² (Van) – Enclosed lockable bin, lockable wheel-well door, 2 deep drawers, 4 shallow drawers, 2 triple hooks, 10 shelf dividers and composite bulkhead with lockable door
Racks and Bins Upgrade Package 1 (Van) (General Contractor; requires Racks and Bins Package) – Ship-thru ladder rack, ladder-rack crossbow
Racks and Bins Upgrade Package 2 (Van) (Electrical Contractor/Appliance Repair; requires Racks and Bins Package) – 12-drawer cabinet,³ tilt shelf,³ toolbox door (additional), wire spool rack, triple hooks (additional) and shelf divider set (additional)
Racks and Bins Upgrade Package 3 (Van) (Plumbing/HVAC Service; req. Racks and Bins Package) – 12-drawer cabinet,³ tilt shelf³ and tank rack (3-tank capacity)
Right-Hand Door Delete Package (Cutaway) – Deletes passenger seat, safety belt and hardware; passenger airbag; A-pillar grab handle; sun visor; speaker, headliner and passenger sideview mirror
School Bus Prep Package (Cutaway) – Banded front door glass (tinted), dual batteries, high-back driver's seat only, 155-amp alternator, 151-litre fuel tank (E-350/E-450 DRW), and frame pucks; deletes passenger seat/pedestal and attaching hardware, passenger safety belt system, passenger B-pillar trim and scuff plate, passenger airbag and headliner

Shuttle Bus Prep Package (Cutaway) – Chrome front bumper and grille, aerodynamic headlamps, manual pedestals (seats not included), frame pucks, Power Windows and Locks Group, front licence plate bracket, maximum front GAWR, and 155-amp alternator; deletes headliner, front vinyl floor covering and dome lamp
Trailer Tow Prep Package – Class I (Van/Wagon/Cutaway) – Trailer wiring harness
Trailer Tow Package – Class II/III/IV (Van/Wagon) – Trailer wiring harness (blade-style female connector), electronic brake controller tap-in capability, relay system for backup/B+/running lights, and frame-mounted hitch receiver
XLT Premium Package (Wagon) – Leather-trimmed captain's chairs for 1st and 2nd rows, 6-way power driver's seat, remote keyless entry, leather-wrapped steering wheel, privacy glass, aluminum wheels, running boards, Ford SYNC®, and electronic message centre with engine-hour meter

¹Restrictions apply. See your Ford of Canada Dealer for details. ²Requires rear vinyl floor covering. ³12-drawer cabinet and tilt shelf not included with QuietFlex Package or EconoCargo Package.

Body Manufacturers are responsible for compliance certification of the completed vehicle. The Ford New Vehicle Limited Warranty and any government certification made by Ford shall cover only the vehicle as manufactured by Ford and shall not extend to any addition, modification or change of or to the vehicle by the Ford Authorized Pool Account.

iPod is a trademark of Apple Inc., registered in the U.S. and other countries. Masterack, QuietFlex and EconoCargo are registered trademarks of Leggett & Platt Commercial Vehicle Products Company. Microsoft is a registered trademark of Microsoft Corporation. SiriusXM Satellite Radio subscriptions sold after 6-month prepaid period expires. Subscriptions are governed by SiriusXM Customer Agreement; see siriusxm.ca. "SiriusXM," the SiriusXM logo, channel names and logos are trademarks of SiriusXM Radio Inc. and are used under licence. The Bluetooth word mark is a trademark of the Bluetooth SIG, Inc.



E-150 COMMERCIAL			E-150 COMMERCIAL			E-150 COMMERCIAL		
E-250 SUPER DUTY® COMMERCIAL			E-250 SUPER DUTY® COMMERCIAL			E-250 SUPER DUTY® COMMERCIAL		
E-350 SUPER DUTY COMMERCIAL			E-350 SUPER DUTY COMMERCIAL			E-350 SUPER DUTY COMMERCIAL		
○ — ○ ○ ○ ○ ○ ○ ○ ○ ○ ○ ○ ○ ○	○ — ○ ○ ○ ○ ○ ○ ○ ○ ○ ○ ○ ○ ○	●	Mechanical		○ ○ ○ ○ ○ ○ ○ ○ ○ ○ ○ ○ ○ ○ ○	○ — ○ ○ ○ ○ ○ ○ ○ ○ ○ ○ ○ ○ ○ ○	○ — ○ ○ ○ ○ ○ ○ ○ ○ ○ ○ ○ ○ ○ ○	
		5.4L V8 FFV engine (4-speed automatic overdrive transmission)						
		6.8L V10 engine (5-speed automatic TorqShift® transmission with overdrive and tow/haul mode)						
		110-volt power outlet IP-mounted, replaces 12-volt powerpoint (requires 155-amp or 225-amp alternator; n/a with 4.6L V8 engine or Navigation Radio System)						
		Alternator – 155-amp (5.4L V8 and 6.8L V10 engines only)						
		Alternator – 225-amp (5.4L V8 and 6.8L V10 engines only)						
		Auxiliary fuel port (included with Ambulance Prep Package) ¹						
		Battery – Heavy-duty 78-amp-hr						
		Battery – Heavy-duty dual 78-amp-hr (included with Ambulance Prep Package)						
		CNG/LPG Gaseous Engine Prep Package ¹ – Hardened intake valves, exhaust valves and valve seats (5.4L V8 and 6.8L V10 engines only; n/a with Ambulance Prep Package)						
		Engine console cover delete (Fleet only)						
		Front GAWR – Maximum up to 4,200 lbs. (1,905 kg) ² (included with Ambulance Prep Package and Aerial Bucket Cargo Van Suspension Package)						
		Integrated trailer brake controller ³ (requires Trailer Tow Package and message centre)						
		Rear axle – Limited-slip ¹						
		Spare wheel and tire delete ¹						
Speed limitation – 105-km/h (65-mph) governed top speed (4.6L V8; Fleet only) ¹								
Speed limitation – 121-km/h (75-mph) governed top speed (4.6L V8; Fleet only) ¹								
○ ○ ○	○ ○ ○	●	Safety/Security		○ ○ ○	○ ○ ○	○ ○ ○	
		E-Guard Cargo Protection System™ and side-door security system ¹						
		Passenger front airbag cut-off switch (n/a with Crew Van Package)						
○ ○ ○	○ ○ ○	○	Seating		○ ○ ○	○ ○ ○	○ ○ ○	
		Dual cloth front bucket seats						
		Dual cloth front captain's chairs ⁴						
Power driver's seat – 6-way with manual lumbar (requires front captain's chairs)			○ ○ ○ ○ ○ ○ ○ ○ ○ ○ ○ ○ ○ ○ ○	○ ○ ○ ○ ○ ○ ○ ○ ○ ○ ○ ○ ○ ○ ○	○ ○ ○ ○ ○ ○ ○ ○ ○ ○ ○ ○ ○ ○ ○			
Appearance/Comfort/Convenience								
16" aluminum wheels								
16" white-painted steel wheels (deletes sport wheel covers)								
Air conditioning – High-capacity (front and rear) (n/a with Ambulance Prep Package)								
Air conditioning delete (n/a with rear view camera)								
AM/FM stereo/single-CD player with MP3 capability, audio input jack, digital clock and 4 speakers; includes SiriusXM Satellite Radio with 6-month prepaid subscription (n/a with E-Guard)								
Premium Navigation Radio System featuring a 6.5" LCD touch screen, single-CD player, MP3 capability, audio input jack and SiriusXM Satellite Radio with 6-month prepaid subscription (requires Power Group and Ford SYNC®)								
SYNC voice-activated, in-vehicle connectivity system (includes auto-dimming rearview mirror; requires cruise control; n/a with base radio or radio delete)								
Appearance/Comfort/Convenience (continued)								
Radio Prep Package – 2 speakers								
Radio Prep Package – 4 speakers (n/a with E-Guard)								
Radio delete (n/a with SYNC or rear view camera)								
Bumper – Black rear step (included with Class I Trailer Tow Prep)								
Bumper – Chrome rear step (included with Class I Trailer Tow Prep; requires High-Series Exterior Upgrade Package)								
Bumpers – Chrome, front and rear contour (included and only available with High-Series Exterior Upgrade Package)								
Cruise control (requires SYNC; included with Premium Van Package)								
Flooring – Rear vinyl								
Message centre – Instrument panel electronic, with engine-hour meter (required with integrated trailer brake controller and Class II/III/IV Trailer Tow Package; included with Reverse Sensing System)								
Mirrors – Sideview, aero-style, manually adjustable glass with manual convex spotters (driver's side only)								
Mirrors – Sideview, aero-style, power-adjustable glass with manual convex spotters (only available with Power Group)								
Mirrors – Sideview, manually telescoping trailer tow, power-adjustable glass with manual convex spotters ⁵ (driver and passenger side)								
Power Group (door locks, front windows, power trailer tow mirrors, Remote Keyless Entry System)								
Privacy glass ¹								
Rear view camera (n/a with base radio or radio delete)								
Reverse Sensing System (requires rear step or contour bumpers and message centre; included with Commercial Value Package)								
Running boards – Door-length on driver side; full-length on passenger side								
Side cargo door – Sliding solid panel								
User-defined upfitter switches – 4 (n/a with 4.6L V8 engine; requires 155-amp or 225-amp alternator)								
Windows – Fixed rear cargo door glass (includes rearview mirror)								
Windows – Fixed side/fixed rear cargo door glass ¹								
Windows – Swing-out side/fixed rear cargo door glass ¹								
Windows – All around (includes swing-out side/fixed rear cargo door glass)								
Auxiliary Heater/Air Conditioning Connector Package with Rear AC Controls								
Auxiliary Heater/Air Conditioning Connector Package without Rear AC Controls								
— — ○ ○ ○ ○ ○ ○ ○ ○ ○ ○ ○ ○ ○	— — ○ ○ ○ ○ ○ ○ ○ ○ ○ ○ ○ ○ ○	○	Packages¹ (See Available Packages section for content)		○ — ○ ○ ○ ○ ○ ○ ○ ○ ○ ○ ○ ○ ○	○ — ○ ○ ○ ○ ○ ○ ○ ○ ○ ○ ○ ○ ○	○ — ○ ○ ○ ○ ○ ○ ○ ○ ○ ○ ○ ○ ○	
		Aerial Bucket Prep Package						
		Ambulance Prep Package (non-FFV engine)						
		Commercial Value Package						
		Crew Van Package						
		Dome/Cargo Light Kit						
		EconoCargo® Upgrade Package						
		Mid-Series Exterior Upgrade Package						
		High-Series Exterior Upgrade Package						
		Insulation Package						
		Interior Upgrade Package						
		Masterack® Racks and Bins Package						
		Modified Vehicle Wiring Kit						
		No-Charge EconoCargo Cargo Management System						
		Premium Van Package						
QuietFlex® III Composite Racks and Bins Package								
Racks and Bins Upgrade Package 1								
Racks and Bins Upgrade Package 2								
Racks and Bins Upgrade Package 3								
Trailer Tow Prep Package – Class I								
Trailer Tow Package – Class II/III/IV								
○ ○ ○	○ ○ ○	○	Ford Work Solutions™		○ ○ ○	○ ○ ○	○ ○ ○	
		Crew Chief™ powered by Telogis® – Vehicle tracking system (includes 1-year subscription service)						

¹Restrictions apply, see your Ford of Canada Dealer for details. ²Computer selected – 4,600 lbs. (2,087 kg) max. ³TBC verified to be compatible with electrically actuated drum brakes and certain electric-over-hydraulic brake systems. See your Ford of Canada Dealer for details. ⁴Available as part of Interior Upgrade Package. ⁵Included as part of Power Group.

E-SERIES WAGON Optional Features

E-150 XLT				
E-350 SUPER DUTY XL				
E-350 SUPER DUTY XLT				
Mechanical				
○	○	●	●	5.4L V8 FFV engine (4-speed automatic overdrive transmission)
—	—	○	○	6.8L V10 engine (5-speed automatic TorqShift® transmission with overdrive and tow/haul mode)
○	○	○	○	110-volt power outlet IP-mounted, replaces 12-volt powerpoint (requires 155-amp or 225-amp alternator; n/a with 4.6L V8 engine or Navigation Radio System)
○	○	○	○	Alternator – 155-amp (5.4L V8 and 6.8L V10 engines only)
○	○	○	○	Alternator – 225-amp (5.4L V8 and 6.8L V10 engines only)
○	○	○	○	Auxiliary fuel port ¹
○	○	○	○	Battery – Heavy-duty 78-amp-hr
○	○	○	○	Battery – Heavy-duty dual 78-amp-hr
○	○	○	○	CNG/LPG Gaseous Engine Prep Package ¹ – Hardened intake valves, exhaust valves and valve seats (5.4L V8 and 6.8L V10 engines only)
○	●	○	○	Integrated trailer brake controller ² (requires Trailer Tow Package and message centre on XL)
●	●	●	●	Rear axle – Limited-slip
—	—	○	○	Spare wheel and tire delete
●	●	—	—	Speed limitation – 105-km/h (65-mph) governed top speed (4.6L V8; Fleet only) ¹
●	●	—	—	Speed limitation – 121-km/h (75-mph) governed top speed (4.6L V8; Fleet only) ¹
Safety/Security				
○	●	○	○	Remote Keyless Entry System with panic alarm and illuminated entry (requires Power Windows and Locks Group and Interior Upgrade Package on XL)
Seating ¹				
○	●	○	●	Cloth-trimmed seating
—	●	—	—	Leather-trimmed seating (requires XLT Premium Package)
—	●	—	○	Power driver's seat – 6-way with manual lumbar (requires front captain's chairs)
—	●	—	—	7 passengers: (4) leather-trimmed captain's chairs for 1st and 2nd rows; (1) 3-passenger rear bench seat (requires XLT Premium Package)
●	—	—	—	8 passengers (2/3/3 seating)
—	—	—	○	11 passengers: (2) front captain's chairs; (3) 3-passenger rear bench seats (Extended Length only)
—	—	●	●	12 passengers (2/3/3/4 seating)
—	—	●	●	15 passengers (2/3/3/3/4 seating)

	E-150 XL	E-150 XLT	E-350 SUPER DUTY XL	E-350 SUPER DUTY XLT
				Appearance/Comfort/Convenience
○ ● ○ ○	● ● ● ●			16" aluminum wheels
○ ○ ○ ○	○ ○ ○ ○			Air conditioning – High-capacity (front and rear; standard on XL Extended Length)
○ ○ ○ ○	○ ○ ○ ○			Air conditioning delete (n/a on Extended Length Wagon or with rear view camera)
○ ○ ○ ○	○ ○ ○ ○			Premium Navigation Radio System featuring a 6.5" LCD touch screen, single-CD player, MP3 capability, audio input jack and SiriusXM Satellite Radio with 6-month prepaid subscription (requires Power Windows and Locks Group on XL and Ford SYNC®)
○ ● ○ ○	○ ○ ○ ○			SYNC voice-activated, in-vehicle connectivity system (includes auto-dimming rearview mirror; n/a with radio delete)
○ ○ ○ ○	○ ○ ○ ○			Radio delete (n/a with SYNC or rear view camera)
○ ○ ○ ○	○ ○ ○ ○			Radio Prep Package – 6 speakers
○ — ○ —	○ — ○ —			Bumper – Black rear step (included with Class I Trailer Tow Prep; n/a with High-Series Exterior Upgrade Package)
● ○ ● ○	○ ○ ○ ○			Bumper – Chrome rear step (included with Class I Trailer Tow Prep; requires High-Series Exterior Upgrade Package on XL)
● ● ● ●	● ● ● ●			Bumpers – Chrome, front and rear contour
● ● ● ●	● ● ● ●			Flooring – Full-length carpet
● ○ ● ○	○ ○ ○ ○			Flooring – Full-length vinyl
○ ● ○ ●	○ ○ ○ ○			Floor mats – Carpeted
○ ● ○ ●	● ● ● ●			Message centre – Instrument panel electronic, with engine-hour meter (required with integrated trailer brake controller and Reverse Sensing System)
● ● ● ●	● ● ● ●			Mirrors – Sideview, aero-style, power-adjustable glass with manual convex spotters on driver's side only (requires Power Windows and Locks Group on XL)
— ○ — ○	○ ○ ○ ○			Mirrors – Sideview, manually telescoping trailer tow, power-adjustable glass with manual convex spotters
● ● ● ●	● ● ● ●			Power Windows and Locks Group
○ ● ○ ○	○ ○ ○ ○			Privacy glass ¹
○ ○ ○ ○	○ ○ ○ ○			Rear view camera (n/a with radio delete or air conditioning delete; requires high-capacity air conditioning on Regular Length XL)
○ ○ ○ ○	○ ○ ○ ○			Reverse Sensing System (requires rear step or contour bumpers and message centre on XL)
○ ● ○ ○	○ ○ ○ ○			Running boards – Door-length on driver side; full-length on passenger side (included with XLT Premium Package)
○ ○ ○ ○	○ ○ ○ ○			Side door – Sliding solid panel
○ ○ ○ ○	○ ○ ○ ○			User-defined upfitter switches – 4 (n/a with 4.6L V8 engine; requires 155-amp or 225-amp alternator)

				E-150 XL
				E-350 SUPER DUTY XL
				E-350 SUPER DUTY XLT
				Packages¹ (See Available Packages section for content)
○	—	○	—	High-Series Exterior Upgrade Package
●	●	●	●	Insulation Package
●	●	●	●	Interior Upgrade Package
○	—	○	—	Mid-Series Exterior Upgrade Package
◐	◐	◐	◐	Trailer Tow Prep Package – Class I
○	○	○	○	Trailer Tow Package – Class II/III/IV
—	○	—	—	XLT Premium Package
				Ford Work Solutions
○	○	○	○	Crew Chief™ powered by Telegis® – Vehicle tracking system (includes 1-year subscription service)

POOL ACCOUNT AND SHIP-THRU PROGRAMS

These suppliers can help make your E-Series the perfect vehicle for your business needs. Please contact your local Ford of Canada Dealer for complete details.

Auto Truck Group

Farmbro

GW Anglin Van & Truck Equipment

Malley Industries Inc.

Masterack Crown

Sterling Fleet Outfitters

Vanterior Truck Outfitters

¹Restrictions apply, see your Ford of Canada Dealer for details. ²TBC verified to be compatible with electrically actuated drum brakes and certain electric-over-hydraulic brake systems. See your Ford of Canada Dealer for details.

E-SERIES CUTAWAY/STRIPPED CHASSIS Optional Features

E-350 SUPER DUTY® CUTAWAY					E-350 SUPER DUTY CUTAWAY					E-350 SUPER DUTY CUTAWAY				
E-450 SUPER DUTY CUTAWAY					E-450 SUPER DUTY CUTAWAY					E-450 SUPER DUTY CUTAWAY				
E-350 SUPER DUTY STRIPPED CHASSIS					E-350 SUPER DUTY STRIPPED CHASSIS					E-350 SUPER DUTY STRIPPED CHASSIS				
E-450 SUPER DUTY STRIPPED CHASSIS					E-450 SUPER DUTY STRIPPED CHASSIS					E-450 SUPER DUTY STRIPPED CHASSIS				
Mechanical					Appearance/Comfort/Convenience					Packages ¹ (See Available Packages section for content)				
●	○	○	○	6.8L V10 engine	●	●	●	16" white-painted steel wheels (DRW only)	—	—	○	○	AC Prep Package	
○	○	—	—	110-volt power outlet IP-mounted, replaces 12-volt powerpoint (requires 155-amp or 225-amp alternator; n/a with Navigation Radio System)	○	—	—	16" steel wheels with sport wheel covers (SRW only)	○	○	—	—	Ambulance Prep Package (non-FFV engine)	
○	○	○	○	Alternator – 155-amp	○	—	—	16" aluminum wheels (SRW only)	○	○	—	—	Auxiliary Heater/Air Conditioning Connector Package	
●	○	○	○	Alternator – 225-amp	○	○	●	Air conditioning delete	○	○	—	—	Auxiliary Heater/Air Conditioning Connector Package with Rear Controls	
○	○	○	○	Battery – Heavy-duty 78-amp-hr	○	○	—	AM/FM stereo/single-CD player with MP3 capability, audio input jack, digital clock and 2 speakers; includes SiriusXM Satellite Radio with 6-month prepaid subscription	●	●	—	—	Insulation Package	
○	○	—	—	Battery – Heavy-duty dual 78-amp-hr (included with Ambulance Prep Package)	○	○	—	Premium Navigation Radio System featuring a 6.5" LCD touch screen, single-CD player, MP3 capability, audio input jack and SiriusXM Satellite Radio with 6-month prepaid subscription (requires Power Windows and Locks Group and Ford SYNC®)	○	○	—	—	Interior Upgrade Package	
○	○	○	○	CNG/LPG Gaseous Engine Prep Package ¹ – Hardened intake valves, exhaust valves and valve seats	○	○	—	SYNC voice-activated, in-vehicle connectivity system (includes auto-dimming rearview mirror; requires cruise control; n/a with base radio or radio delete)	○	○	—	—	Mid-Series Exterior Upgrade Package	
○	○	—	—	Engine cover console delete (engine cover provided; console is deleted)	○	○	—	4-Speaker Upgrade Package (includes 2 installed and 2 boxed speakers)	○	○	—	—	High-Series Exterior Upgrade Package	
●	●	○	○	Front GAWR – Maximum ¹	○	○	—	Radio Prep Package – 2 speakers	○	○	—	—	Motorhome Prep Package	
●	—	—	—	Fuel tank – 125-litre capacity midship (available with E-350 SRW)	○	○	—	Radio Prep Package – 4 speakers	○	○	—	—	Right-Hand Door Delete Package	
●	●	●	○	Fuel tank – 151-litre capacity aft of axle	○	○	—	Radio delete	○	○	—	—	School Bus Prep Package	
●	●	●	●	Fuel tank – 208-litre capacity aft of axle (DRW only)	○	○	—	Bumper – White-painted front (Fleet only)	○	○	—	—	Shuttle Bus Prep Package	
●	○	—	—	Integrated trailer brake controller ² (requires message centre)	○	○	—	Cruise control	○	○	—	—	Trailer Tow Prep Package	
○	○	○	○	Rear axle – Limited-slip ¹	○	○	—	Frame spacers – Alternate lateral ¹	○	○	—	—		
○	○	○	○	Spare wheel and tire	○	○	—	Frame spacers – Standard pattern ¹	○	○	—	—		
●	○	○	○	Speed limitation – 105-km/h (65-mph) governed top speed (Fleet only) ¹	○	○	—	Message centre – Instrument panel electronic, with engine-hour meter (required with integrated trailer brake controller)	○	○	—	—		
●	●	●	●	Speed limitation – 121-km/h (75-mph) governed top speed (Fleet only) ¹	○	○	—	Mirror – Interior day/night rearview (n/a with SYNC)	○	○	—	—		
○	○	○	○	Traction control (requires limited-slip rear axle)	○	○	—	Power Windows and Locks Group	○	○	—	—		
Safety/Security					Ford Work Solutions™					Crew Chief™ powered by Telogis® – Vehicle tracking system (includes 1-year subscription service)				
●	●	—	—	Front airbag delete – Passenger side ¹	○	○	—	Pucks – Frame isolator ¹	○	○	—	—		
○	○	—	—	Passenger front airbag cut-off switch ³	○	○	—	Running boards – Door-length						
○	○	—	—	Remote Keyless Entry System ⁴	○	○	—	Mirrors – Sideview, manually telescoping trailer tow, manually adjustable glass with manual convex spotters						
Seating					○	○	—	Mirrors – Sideview, manually telescoping trailer tow, power-adjustable glass with manual convex spotters ⁴						
○	○	—	—	Captain's chair – Cloth, driver's side only	○	○	—	User-defined upfitter switches – 4, requires 155-amp or 225-amp alternator						
●	○	—	—	Captain's chair – Without trim, driver's side only										
○	○	—	—	Dual cloth front bucket seats										
○	○	—	—	Dual cloth front captain's chairs										
○	○	—	—	Dual front captain's chairs – Without trim										
●	●	—	—	Manual pedestal with 2-way adjuster										
●	●	—	—	Manual Seat Prep Package										
○	○	—	—	Passenger seat delete ¹										
○	○	—	—	Power driver's seat – 6-way with manual lumbar (requires front captain's chairs)										
●	○	—	—	Power Seat Prep Package										

¹Restrictions apply, see your Ford of Canada Dealer for details. ²TBC verified to be compatible with electrically actuated drum brakes and certain electric-over-hydraulic brake systems. See your Ford of Canada Dealer for details. ³Always wear your safety belt and follow airbag warning label instructions. ⁴Requires Power Windows and Locks Group.

TECHNICAL SPECIFICATIONS

DIMENSIONS in. (mm)

EXTERIOR	E-150 Regular Length	E-150 Extended Length	E-250/E-350 Super Duty® Regular Length	E-250/E-350 Super Duty Extended Length
Overall length	216.7 (5,505)	236.4 (6,005)	216.7 (5,505)	236.4 (6,005) (Van); 236.7 (6,013) (Wagon)
Wheelbase	138.0 (3,505)	138.0 (3,505)	138.0 (3,505)	138.0 (3,505)
Load floor height	28.0 (711) (Van); 28.8 (731) (Wagon)	28.6 (726)	31.1/29.5 (790/749) (Van); 30.2 (767) (Wagon)	31.5/29.7 (800/754) (Van); 29.1 (739) (Wagon)
Width – Excluding mirrors	79.4 (2,016)	79.4 (2,016)	79.4 (2,016)	79.4 (2,016)
Width – Including mirrors	106.0 (2,692) (Van); 95.7 (2,431) (Wagon)	106.0 (2,692)	106.0 (2,692) (Van); 95.7 (2,431) (Wagon)	106.0 (2,692) (Van); 95.7 (2,431) (Wagon)
Height	82.4 (2,093) (Van); 82.1 (2,085) (Wagon)	82.6 (2,098)	84.8/83.7 (2,154/2,126) (Van); 83.1 (2,111) (Wagon)	85.0/83.6 (2,159/2,123) (Van); 82.3 (2,090) (Wagon)
Rear cargo door opening height	49.5 (1,257) (Van); 46.8 (1,189) (Wagon)	49.5 (1,257)	49.5 (1,257) (Van); 46.8 (1,189) (Wagon)	49.5 (1,257) (Van); 48.0 (1,219) (Wagon)
Rear cargo door opening width	53.9 (1,369) (Van); 54.4 (1,382) (Wagon)	53.9 (1,369)	53.9 (1,369) (Van); 54.4 (1,382) (Wagon)	53.9 (1,369) (Van); 54.4 (1,382) (Wagon)
Side cargo door opening height	48.2 (1,224) (Van); 47.2 (1,198) (Wagon)	48.1 (1,221)	48.2 (1,224) (Van); 47.2 (1,198) (Wagon)	48.1 (1,221) (Van); 47.2 (1,198) (Wagon)
Swing-out side cargo door opening width	44.8 (1,138)	44.8 (1,138)	44.8 (1,138)	44.8 (1,138)
Sliding side cargo door opening width	45.6 (1,158)	45.6 (1,158)	45.6 (1,158)	45.6 (1,158)
INTERIOR (behind 1st row)				
Head room	42.0 (1,068)	42.0 (1,068)	42.0 (1,068)	42.0 (1,068)
Shoulder room	68.1 (1,729)	68.1 (1,729)	68.1 (1,729)	68.1 (1,729)
Hip room	65.6 (1,666)	65.6 (1,666)	65.6 (1,666)	65.6 (1,666)
Leg room	40.0 (1,015)	40.0 (1,015)	40.0 (1,015)	40.0 (1,015)
Maximum cargo volume cu. ft. (litres)	237.8 (6,734)	278.3 (7,881)	237.8 (6,734)	278.3 (7,881)

MAXIMUM LOADED TRAILER WEIGHT RATINGS lbs. (kg)¹

Automatic Transmission			Wagon			Van ²						Cutaway		
Engine	Axle Ratio	GCWR	E-150	E-350 Super Duty	E-350 Super Duty Extended	E-150	E-150 Extended	E-250	E-250 Extended	E-350 Super Duty	E-350 Super Duty Extended	E-350 SRW	E-350 DRW	E-450 DRW
4.6L SOHC V8 FFV	3.73	11,500 (5,216)	5,600 (2,540)	—	—	6,000 (2,721)	5,900 (2,676)	6,000 (2,721)	5,900 (2,676)	—	—	—	—	—
	4.10	12,000 (5,443)	6,100 (2,767)	—	—	6,500 (2,948)	6,400 (2,903)	6,500 (2,948)	6,400 (2,903)	—	—	—	—	—
5.4L SOHC V8 FFV	3.73	13,000 (5,897)	7,000 (3,175)	6,700 (3,039)	6,500 (2,948)	7,500 (3,402)	7,300 (3,311)	7,400 (3,357)	7,300 (3,311)	7,400 (3,357)	7,200 (3,265)	—	—	—
	4.10	13,000 (5,897)	7,000 (3,175)	6,700 (3,039)	6,500 (2,948)	7,500 (3,402)	7,300 (3,311)	7,400 (3,357)	7,300 (3,311)	7,400 (3,357)	7,200 (3,265)	8,000 (3,629)	7,700 (4,493)	—
	4.56	14,000 (6,350)	—	—	—	—	—	—	—	—	—	—	—	8,500 (3,856)
6.8L SOHC V10	3.73	15,000 (6,804)	—	8,500 (3,856)	8,300 (3,765)	—	—	—	—	9,100 (4,128)	9,000 (4,082)	—	—	—
	4.10	18,500 (8,391)	—	10,000 (4,536)	10,000 (4,536)	—	—	—	—	10,000 (4,536)	10,000 (4,536)	10,000 (4,536)	10,000 (4,536)	—
	4.56	22,000 (9,979)	—	—	—	—	—	—	—	—	—	—	—	10,000 (4,536)

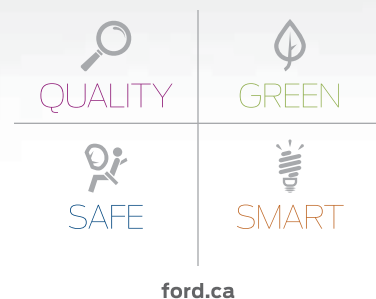
ENGINE RATINGS

	4.6L SOHC V8 FFV	5.4L SOHC V8 FFV	6.8L SOHC V10
Horsepower (hp @ rpm)	225 @ 4,800	255 @ 4,500	305 @ 4,250
Torque (lb.-ft. @ rpm)	286 @ 3,500	350 @ 2,500	420 @ 3,250

MAXIMUM CAPABILITIES lbs. (kg)¹

	GVWR	Payload
E-150 Van	8,520 – 8,600 (3,865 – 3,901)	3,260 (1,479)
E-150 Extended Van	8,600 (3,901)	3,190 (1,447)
E-250 Van	8,900 – 9,000 (4,037 – 4,082)	3,630 (1,647)
E-250 Extended Van	8,900 – 9,000 (4,037 – 4,082)	3,480 (1,579)
E-350 Van	9,500 (4,309)	4,050 (1,837)
E-350 Extended Van	9,500 (4,309)	3,920 (1,778)
E-350 Cutaway SRW	10,050 (4,559)	5,268 (2,390)
E-350 Cutaway DRW	11,500 – 12,500 (5,216 – 5,670)	7,376 (3,346)
E-450 Cutaway DRW	14,000 – 14,500 (6,350 – 6,577)	9,040 (4,100)
E-350 Stripped Chassis DRW	11,500 – 12,500 (5,216 – 5,670)	8,026 (3,641)
E-450 Stripped Chassis DRW	14,000 – 14,500 (6,350 – 6,577)	9,747 (4,421)

¹Maximum capabilities shown are for properly equipped vehicles with required equipment and a 150-lb. (68-kg) driver. Weight of additional options, equipment, passengers and cargo must be deducted from this weight. Cutaway ratings are based on incomplete vehicles. Final vehicle manufacturer weights and ratings will vary due to upfit and modification requirements. ²For maximum trailer weights with Crew Van, deduct 200 lbs. (91 kg) from the weights shown (except with 18,500-lb. [8,391-kg] GCWR).



Our commitment to you: Peace-of-Mind Protection

- Basic Coverage: 3 years/60,000 km
- Powertrain Limited Warranty: 5 years/100,000 km
- Corrosion Warranty: 5 years/unlimited distance
- Roadside Assistance: 5 years/100,000 km

Certain conditions apply. For more information on these warranties and coverages, ask your local Ford of Canada Dealer or visit ford.ca.

Ford Extended Service Plan. Help protect your investment and add to your peace of mind by complementing your vehicle purchase or lease with a Ford Extended Service Plan (ESP). Ford ESP protects you against unexpected repair costs after your Basic Coverage in the New Vehicle Limited Warranty expires by covering many vehicle components. Enjoy the drive even more by complementing your ESP with a prepaid maintenance plan, which covers all required scheduled maintenance for your vehicle, plus 8 wear items. See your Ford of Canada Dealer for details.

□ **Ford Credit.** Get the ride you want. Whether you plan to lease or finance, you'll find the choices that are right for you at Ford Credit. Ask your local Ford of Canada Dealer for details or check us out at fordcredit.ca.

□ **Genuine Ford Accessories.** Ford of Canada warrants that its authorized Dealers will repair or replace any Genuine Ford Accessory that is properly installed by the authorized Dealer that sold the accessory and found to be defective in factory-supplied materials or workmanship. The accessory will be warranted for whichever provides you the greatest benefit: 12 months/20,000 km (whichever occurs first), or the remainder of your 36-month/60,000-km (whichever occurs first) Basic Coverage in the New Vehicle Limited Warranty. Contact your local Ford of Canada Dealer for details.

□ **Ford Licensed Accessories (FLA)** are warranted by the accessory manufacturer's limited warranty. The warranty coverage will vary by accessory manufacturer. Ford Licensed Accessories are fully designed and developed by the accessory manufacturer and have not been designed or tested to Ford Motor Company engineering requirements. Contact your local Ford of Canada Dealer for details regarding the accessory manufacturer's limited warranty and/or for a copy of the FLA product limited warranty offered by the accessory manufacturer.

□ **For prompt, courteous answers to your questions: Ford Customer Relationship Centre 1-800-565-3673; Ford Credit Customer Service Centre 1-877-636-7346.**

Competitive comparisons are based on 2013/2014 competitive models, publicly available information and Ford data at the time of printing of the 2014 original printed version. Some features discussed may be optional. Vehicles shown may contain optional equipment. Features shown may be offered only in combination with other options or subject to additional ordering requirements or limitations. Dimensions shown may vary due to optional features and/or production variability. Following publication of the 2014 original printed brochure, certain changes in standard equipment, options and the like, or product delays may have occurred which would not be included in these pages. Your Ford of Canada Dealer is your best source for up-to-date information. Ford Motor Company of Canada, Limited, reserves the right to change product specifications at any time without incurring obligations. Colours may not be exactly as illustrated. Please see your sales consultant for specific colour and model availability. Please visit your local Ford of Canada Dealer or ford.ca for complete vehicle details.

Questions or comments?



blog.ford.ca



facebook.com/FordCanada



twitter.com/FordCanada



youtube.com/FordCanada

